

STATE OF ILLINOIS  
DEPARTMENT OF TRANSPORTATION  
DIVISION OF HIGHWAYS

**PROPOSED  
HIGHWAY PLANS**  
FAU 9588 & FAS 903  
HERRIN ROAD  
SECTION 39(R-1,B-1,B-2)  
PROJECT NO. ACHSIP-ACRS-0005 (958)  
RESURFACING, CURVE REALIGNMENT, EARTHWORK,  
BRIDGE REPLACEMENTS, DRAINAGE IMPROVEMENTS  
WILLIAMSON COUNTY  
C-99-001-12

FOR INDEX OF SHEETS, SEE SHEET NO. 3

STATION EQUATIONS  
STA. 90+78.66 BACK = STA. 97+58.15 AHEAD

TRAFFIC DATA  
2013 ADT = 6900 WITH 4.49% TRUCKS  
2033 ADT = 9295 WITH 4.46% TRUCKS

TOWNSHIPS  
HERRIN

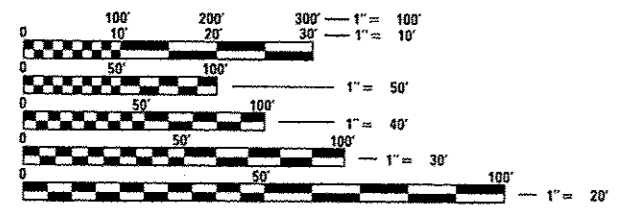
PR STR 100-0081  
STA 53+00 ON PR ALIGNMENT  
REPLACE EX STR 100-3009

PR STR 100-0080  
STA 35+90 ON PR ALIGNMENT  
REPLACE EX STR 100-3008

PROJECT BEGINS  
STA -0+29.80

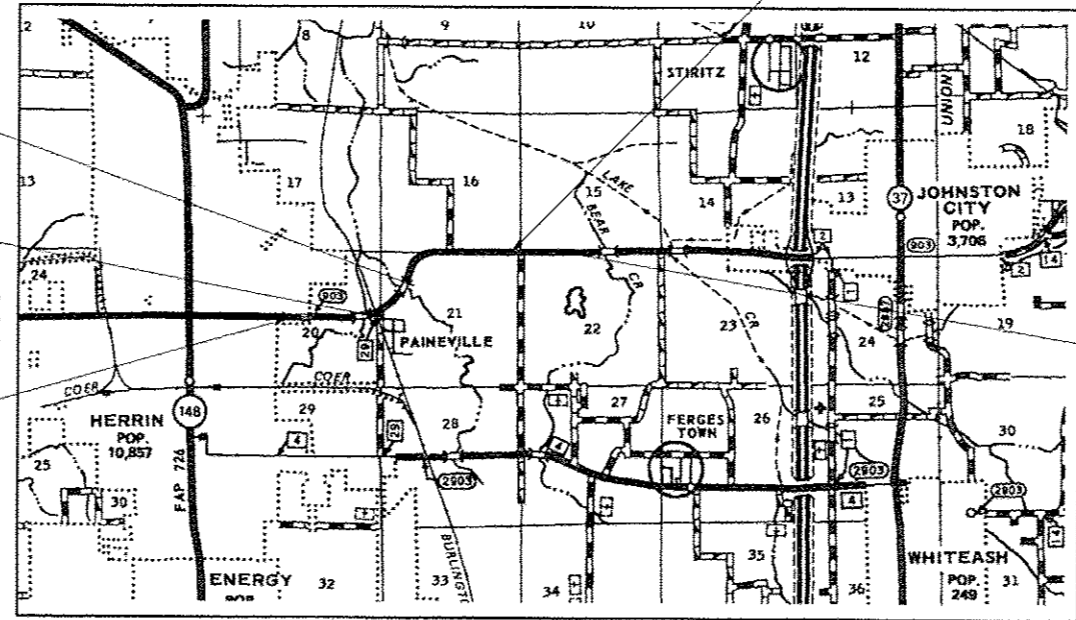
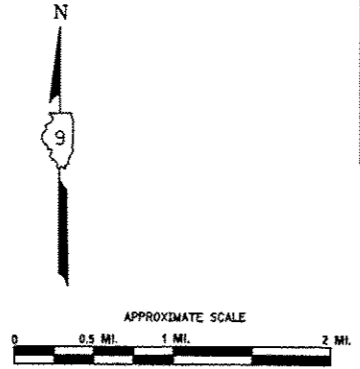
STATION EQUATION:  
STA 90+78.66 BACK =  
STA 97+58.15 AHEAD

PROJECT ENDS:  
STA 108+00



FULL SIZE PLANS HAVE BEEN PREPARED USING STANDARD ENGINEERING SCALES. REDUCED SIZED PLANS WILL NOT CONFORM TO STANDARD SCALES. IN MAKING MEASUREMENTS ON REDUCED PLANS, THE ABOVE SCALES MAY BE USED.

J.U.L.I.E.  
JOINT UTILITY LOCATION INFORMATION FOR EXCAVATION  
1-800-892-0123



GROSS LENGTH OF PROJECT = 10,150.31 FT = 1.92 MILES  
NET LENGTH OF PROJECT = 10,150.31 FT = 1.92 MILES

F.A.U. RTE.	SECTION	COUNTY	TOTAL SHEETS	SHEET NO.
9588	39R-1B-1B-2	WILLIAMSON	224	1
FED. ROAD DIST. NO.	ILLINOIS	FED. AID PROJECT		

\* & FAS 903  
\* 224-1 + 1 = 224 TOTAL SHEETS  
D-99-001-12



LOCATION OF SECTION INDICATED THUS: - [thick line] -

STATE OF ILLINOIS  
DEPARTMENT OF TRANSPORTATION  
DIVISION OF HIGHWAYS

SUBMITTED Dec 6 20 13

*Jeffrey L. Keim*  
DEPUTY DIRECTOR OF HIGHWAYS, REGION ENGINEER

Jan 24 20 14  
*John D. Baranelli P.E.*  
ENGINEER OF DESIGN AND ENVIRONMENT

Jan 24 20 14  
*Onur Osman P.E.*  
DIRECTOR OF HIGHWAYS, CHIEF ENGINEER

PRINTED BY THE AUTHORITY  
OF THE STATE OF ILLINOIS

2-18-14

DESIGNER: MELISSA COLE (618)351-5216

CONTRACT NO. 78277