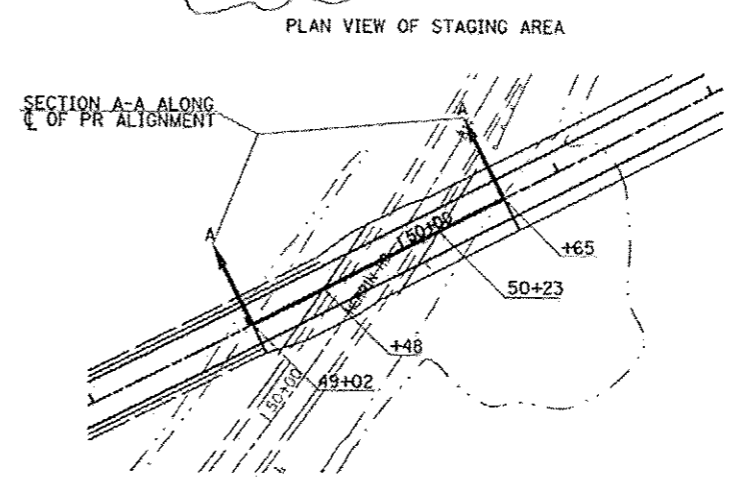
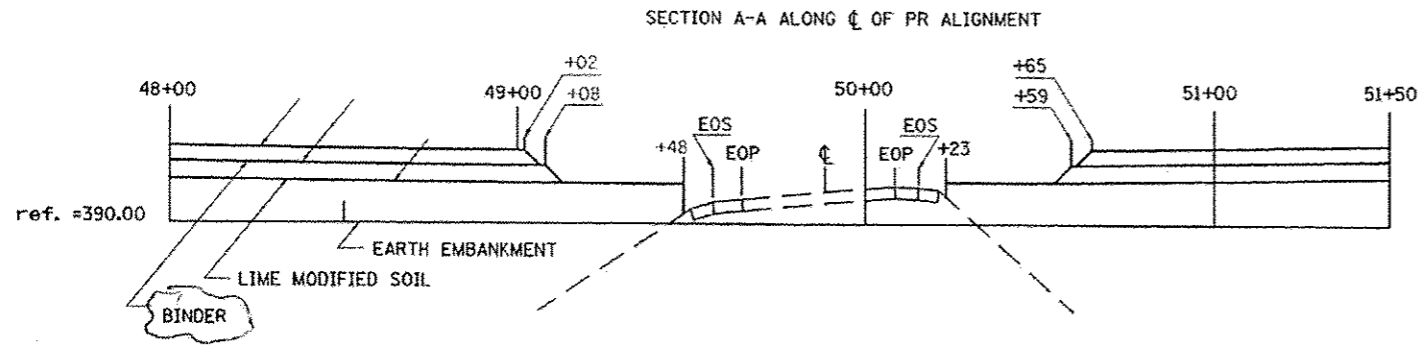


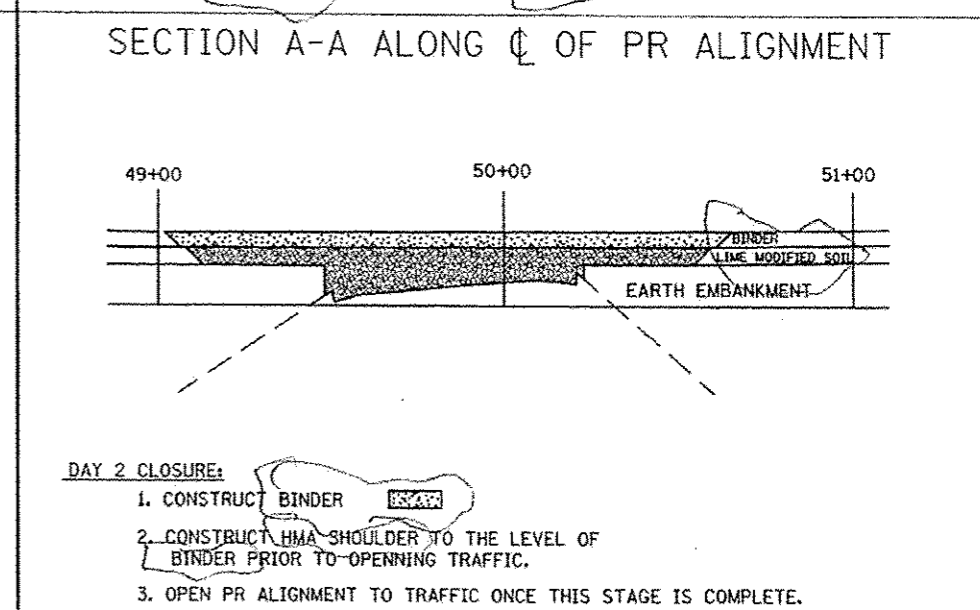
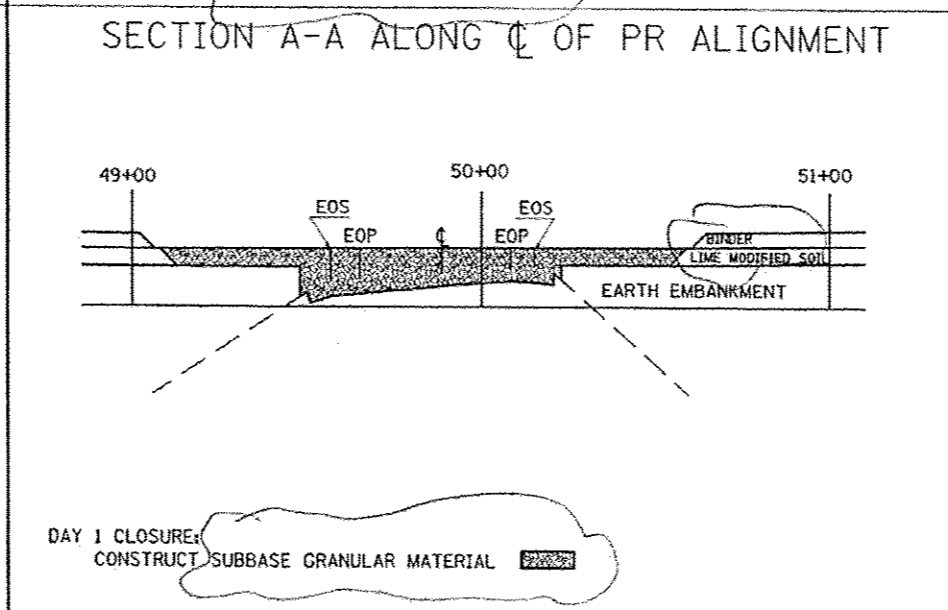
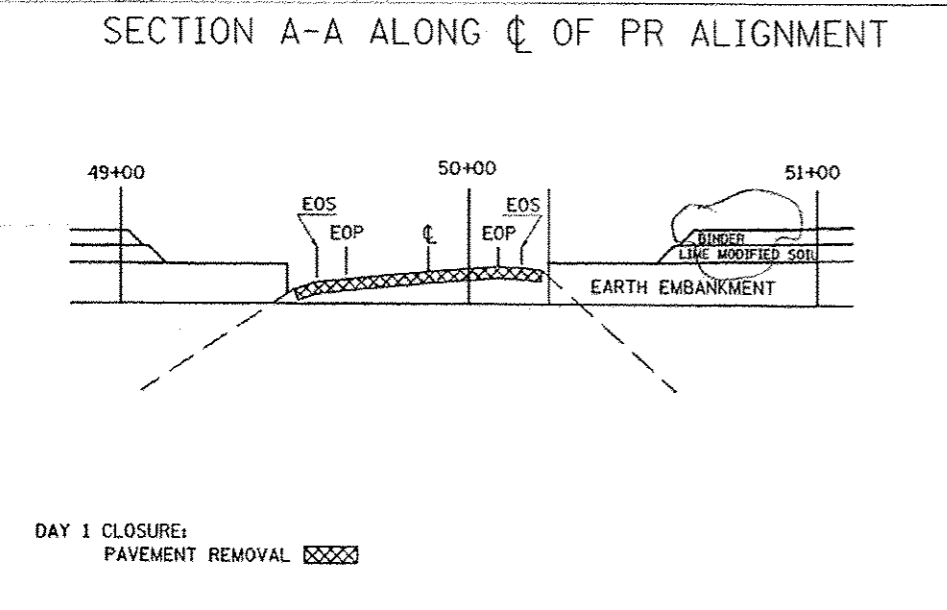
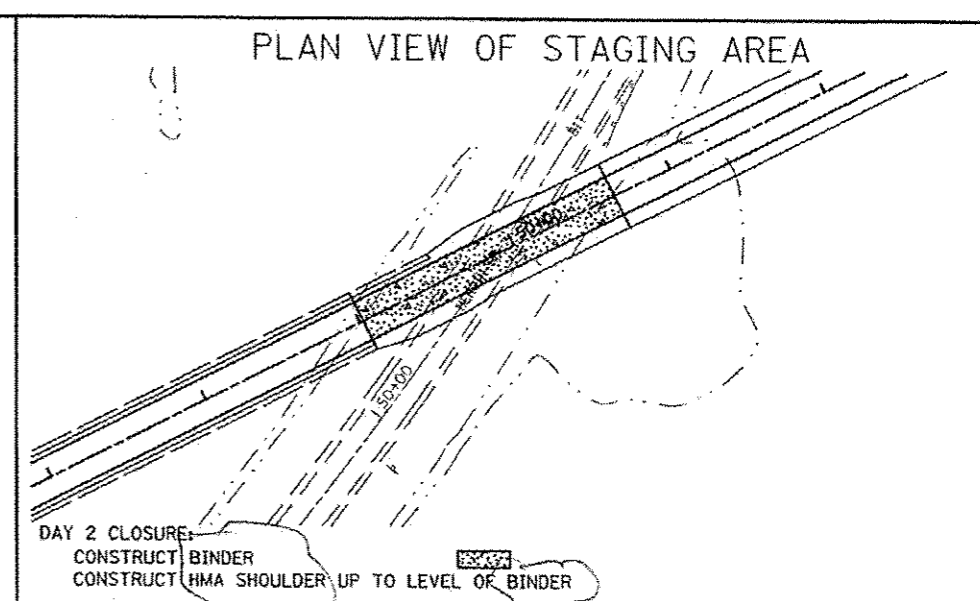
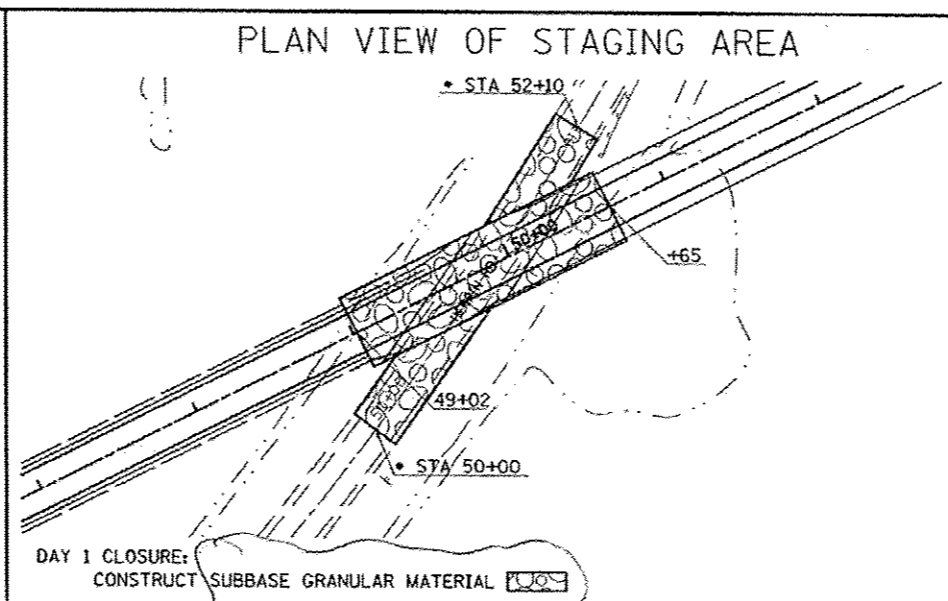
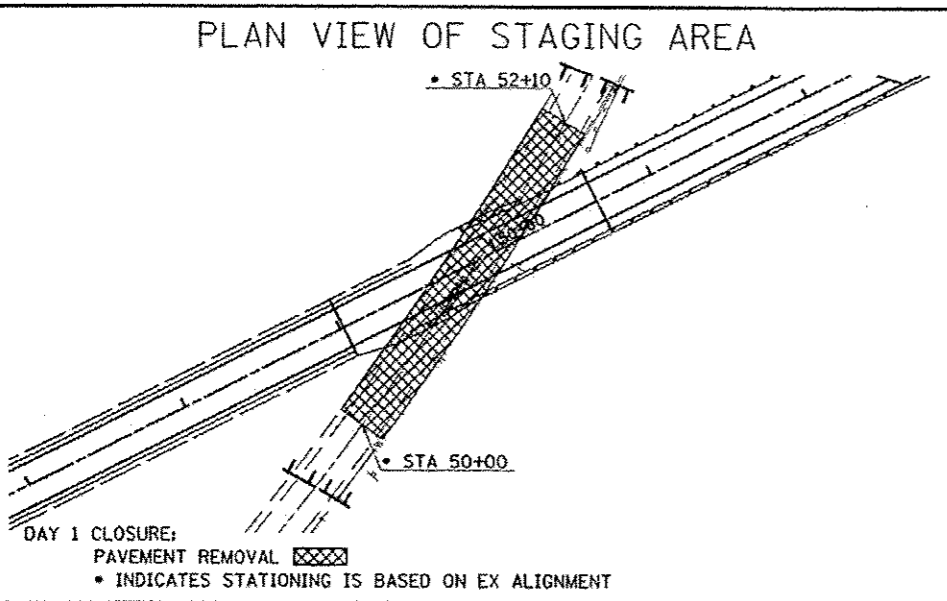
PRE-STAGE - TRAFFIC IS ON THE EXISTING ALIGNMENT

F.A.M. RTE.	SECTION	COUNTY	TOTAL SHEETS	SHEET NO.
9585	399-10-LB-D	WILLIAMSCH	224	48
FED. ROAD DIST. NO.	ILLINOIS	FED. AID PROJECT		
• & FAS 903		CH 18277		



- PRE-STAGE NOTES:**
1. THE ENTIRE PR ALIGNMENT INCLUDING THE BANDYVILLE AND CHITTYVILLE ROAD RELOCATIONS MUST BE COMPLETED PRIOR TO STARTING THIS STAGE OF CONSTRUCTION.
 2. CONSTRUCT EARTH EMBANKMENT, LIME MODIFIED SOIL AND BINDER TO LIMITS AS SHOWN.

NOTES:
CONSTRUCT EARTH EMBANKMENT, LIME MODIFIED SOIL, AND BINDER TO LIMITS AS SHOWN ABOVE.



REVISOR'S MARK: REVISED SHEET 2-18-14

STAGED CONSTRUCTION DETAIL