

STATE OF ILLINOIS
 DEPARTMENT OF TRANSPORTATION
 DIVISION OF HIGHWAYS

**PROPOSED
 HIGHWAY PLANS**
 FAU 9588 & FAS 903
 HERRIN ROAD
 SECTION 39(R-1,B-1,B-2)
 PROJECT NO. ACHSIP-ACRS-0005 (958)
 RESURFACING, CURVE REALIGNMENT, EARTHWORK,
 BRIDGE REPLACEMENTS, DRAINAGE IMPROVEMENTS
 WILLIAMSON COUNTY
 C-99-001-12

FOR INDEX OF SHEETS, SEE SHEET NO. 3

STATION EQUATIONS
 STA. 90+78.66 BACK = STA. 97+58.15 AHEAD

TRAFFIC DATA
 2013 ADT = 6900 WITH 4.49% TRUCKS
 2033 ADT = 9295 WITH 4.46% TRUCKS

TOWNSHIPS
 HERRIN

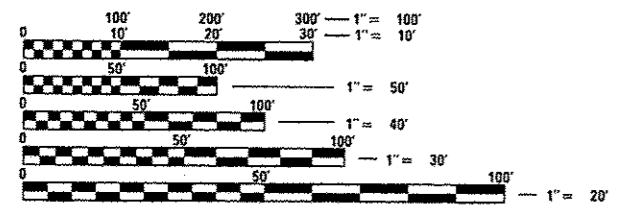
PR STR 100-0081
 STA 53+00 ON PR ALIGNMENT
 REPLACE EX STR 100-3009

PR STR 100-0080
 STA 35+90 ON PR ALIGNMENT
 REPLACE EX STR 100-3008

PROJECT BEGINS
 STA -0+29.80

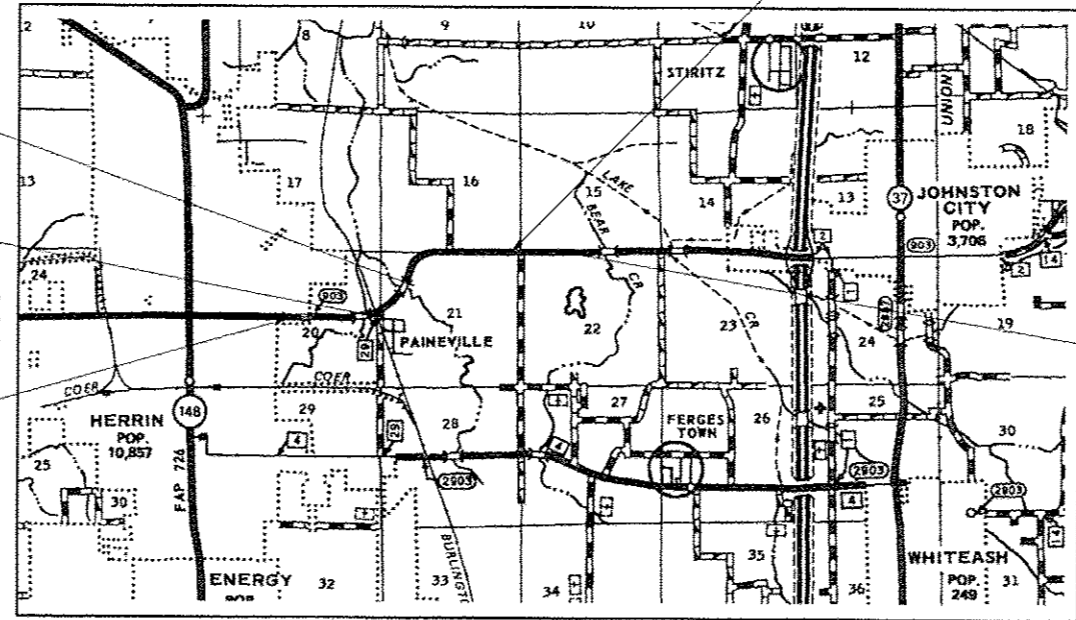
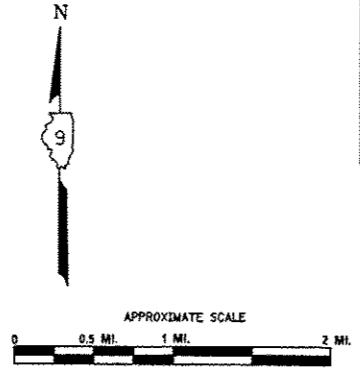
STATION EQUATION:
 STA 90+78.66 BACK =
 STA 97+58.15 AHEAD

PROJECT ENDS:
 STA 108+00



FULL SIZE PLANS HAVE BEEN PREPARED USING STANDARD
 ENGINEERING SCALES. REDUCED SIZED PLANS WILL NOT
 CONFORM TO STANDARD SCALES. IN MAKING MEASUREMENTS
 ON REDUCED PLANS, THE ABOVE SCALES MAY BE USED.

J.U.L.I.E.
 JOINT UTILITY LOCATION INFORMATION FOR EXCAVATION
 1-800-892-0123



GROSS LENGTH OF PROJECT = 10,150.31 FT = 1.92 MILES
 NET LENGTH OF PROJECT = 10,150.31 FT = 1.92 MILES

F.A.U. RTE.	SECTION	COUNTY	TOTAL SHEETS	SHEET NO.
9588	39R-1B-1B-2	WILLIAMSON	224	1
FED. ROAD DIST. NO.		ILLINOIS	FED. AID PROJECT	

* & FAS 903
 * 224-1+1 = 224 TOTAL SHEETS
 D-99-001-12



STATE OF ILLINOIS
 DEPARTMENT OF TRANSPORTATION
 DIVISION OF HIGHWAYS

SUBMITTED Dec 6 20 13

Jeffrey L. Keim
 DEPUTY DIRECTOR OF HIGHWAYS, REGION ENGINEER

Jan 24 20 14
John D. Baranelli P.E.
 ENGINEER OF DESIGN AND ENVIRONMENT

Jan 24 20 14
Onur Osman P.E.
 DIRECTOR OF HIGHWAYS, CHIEF ENGINEER

PRINTED BY THE AUTHORITY
 OF THE STATE OF ILLINOIS

2-18-14

DESIGNER: MELISSA COLE (618)351-5216

CONTRACT NO. 78277

F.A.D. RTE.	SECTION	COUNTY	TOTAL SHEETS	SHEET NO.
958B	39R-LB-LB-27	WILLIAMSON	224	3
STA.	TO STA.			
FED. ROAD DIST. NO.	ILLINOIS	FED. AID PROJECT		
• & FAS 903			CN 18217	

INDEX OF SHEETS

<p>1 COVER SHEET</p> <p>2 SIGNATURE SHEET</p> <p>3 INDEX OF SHEETS</p> <p>4 GENERAL NOTES</p> <p>5 DROP OFF POLICY TABLE</p> <p>6 COMMITMENTS, HIGHWAY STANDARDS AND MIX REQUIREMENTS</p> <p>7 - 17 SUMMARY OF QUANTITIES</p> <p>18 - 22 TYPICAL SECTIONS</p> <p>23 - 31 SCHEDULES OF QUANTITIES</p> <p>32 ALIGNMENT SHEET</p> <p>33 TIE POINTS AND BENCHMARKS</p> <p>34 - 47 PLAN AND PROFILE SHEETS:</p> <p style="padding-left: 40px;">MAINLINE</p> <p style="padding-left: 40px;">BANDYVILLE ROAD</p> <p style="padding-left: 40px;">CHITTYVILLE ROAD</p> <p>48 - 51 STAGES OF CONSTRUCTION AND TRAFFIC CONTROL SHEETS</p>	<p>52 - 57 EROSION AND SEDIMENT CONTROL DETAILS</p> <p>58 - 60 RIGHT OF WAY SHEETS</p> <p>61 - 64 REMOVAL PLAN</p> <p>65 - 68 WETLAND MITIGATION PLAN</p> <p>69 DETAIL OF BRIDGE TRANSITION AND BANDYVILLE RD. PAVEMENT MARKING DETAIL</p> <p>70 DETAIL OF BUTT JOINTS</p> <p>71 DETAIL OF SIDEROADS</p> <p>72 DETAIL OF ENTRANCES</p> <p>73 DETAIL OF SUPERELEVATION TRANSITIONS</p> <p>74 DETAIL OF UNEVEN PAVEMENT SIGN, ROUGH GROVED SURFACE</p> <p>75 ENERGY DISSIPATOR, TEMPORARY DITCH CHECKS AND SEEDING AND MULCHING</p> <p>* 76 - 119 STRUCTURE PLANS 100-0080 AND 100-0081</p> <p style="padding-left: 40px;">CROSS SECTIONS:</p> <p>120 - 127 STAGE 1</p> <p>128 - 137 STAGE 2</p> <p>138 - 219 FINAL CROSS SECTIONS</p> <p>220 - 222 BANDYVILLE ROAD</p> <p>223 - 224 CHITTYVILLE ROAD</p>
--	---



* SHEET 94 ADDED

2-18-14

COMMITMENTS

1. A COMMITMENT WAS MADE TO CATHERINE PEITHMAN TO PROVIDE A FE AT STA. 63+43 LT (CURVE RELOCATION) TO EASE THE FARM OPERATION SPLIT BY THE CURVE RELOCATION. THIS WILL GIVE THEM FIELD ENTRANCES ON BOTH SIDES OF THE RELOCATION IN THE SAME LOCATION.
2. A COMMITMENT WAS MADE TO HOWARD GRANT (PARCEL 113) TO MOVE THE DITCH FLOWING TO BEAR CREEK OFF OF HIS PROPERTY AND BACK TO STATE R.O.W. A COMMITMENT WAS MADE THAT RIPRAP WILL BE PLACED ALONG THE BACKSIDE OF THE DITCH TO PREVENT FUTURE EROSION.
3. THE PRIVATE ENTRANCE AT APPROX. STA. 28+75 LT (RELOC.) WILL BE RECONNECTED TO THE RELOCATED HIGHWAY AT NO COST TO THE PROPERTY OWNER.
4. THE EXISTING WATER METER LOCATED WITHIN THE NEW RIGHT OF WAY AREA OF PARCEL NO. 9017702, WILL BE RELOCATED ONTO THE OWNER'S REMAINING PROPERTY AS PART OF THE ROADWAY PROJECT AT NO COST TO THE OWNER. THE COST OF THIS RELOCATION SHALL BE INCLUDED IN THE RELOCATION OF THE UTILITIES. THE OWNER AT THE TIME CONSTRUCTION WILL GRANT A TEMPORARY CONSTRUCTION EASEMENT AT NO COST TO THE STATE, TO PERFORM THE WORK.
5. TREE CLEARING WILL NOT BE ALLOWED FROM APRIL 1ST TO SEPTEMBER 30TH.

STANDARDS

000001-06	635011-02
001001-02	642006
280001-07	666001-01
406201-01	667101-02
420401-10	701001-02
442201-03	701006-05
482001-02	701011-04
482011-03	701201-04
515001-03	701301-04
542001-04	701306-03
542201-02	701311-03
542301-03	701326-04
542401-01	701336-06
630001-10	701501-06
630201-06	701901-03
630301-06	780001-04
631011-09	781001-03
631031-12	BLR 21-9
635001-01	
635006-03	

MIXTURE REQUIREMENTS

LOCATION(S)	HOT-MIX ASPHALT SURFACE COURSE
MIXTURE USE(S)	HOT-MIX ASPHALT SURFACE COURSE, MIX D, N90
AC/PG	PG64-22
RAP % (MAX)	SEE SPECIAL PROVISION
DESIGN AIR VOIDS:	4.0% 90 GYRATION DESIGN
MIXTURE COMPOSITION: (GRADATION MIXTURE)	IL-9.5 MM
FRICTION AGGREGATE:	D SURFACE

LOCATION(S)	HOT-MIX ASPHALT BINDER COURSE, BASE COURSE WIDENING, PAVEMENT PATCHING, AND HOT-MIX ASPHALT SHOULDERS (LOWER LIFTS)
MIXTURE USE(S)	HOT-MIX ASPHALT BINDER COURSE, N90, IL-19.0MM, FINE GRADE
AC/PG	PG64-22
RAP % (MAX)	SEE SPECIAL PROVISION
DESIGN AIR VOIDS:	4.0% 90 GYRATION DESIGN
MIXTURE COMPOSITION: (GRADATION MIXTURE)	IL-19.0 MM FINE GRADE
FRICTION AGGREGATE:	NONE



LOCATION(S)	HOT-MIX ASPHALT SHOULDERS (TOP LIFT)
MIXTURE USE(S)	HOT-MIX ASPHALT SURFACE COURSE, MIX C, N90
AC/PG	PG64-22
RAP % (MAX)	SEE SPECIAL PROVISION
DESIGN AIR VOIDS:	4.0% 90 GYRATION DESIGN
MIXTURE COMPOSITION: (GRADATION MIXTURE)	IL-9.5 MM
FRICTION AGGREGATE:	C SURFACE

2-18-14

SUMMARY OF QUANTITIES - CONT

		LOCATION: WILLIAMSON COUNTY					
		ROUTE: URBAN - FAU 9588			RURAL - FAS 903		
		FUNDING: FED 90% (HSIP) STATE 10%		FED 90% (HSIP) STATE 10%		FED 80% (STP) STATE 20%	
CODE NUMBER	ITEM DESCRIPTION	UNIT	TOTAL QUANTITY	ROADWAY 0004	SN 100-0080 0011	SN 100-0081 0011	ROADWAY 0004
30201500	LIME	TON	821	414			407
31100100	SUBBASE GRANULAR MATERIAL, TYPE A	TON	4500	4500			
31101900	SUBBASE GRANULAR MATERIAL, TYPE C	TON	2606	1391			1215
35100100	AGGREGATE BASE COURSE, TYPE A	TON	1515	615			900
35600708	HOT-MIX ASPHALT BASE COURSE WIDENING, 8"	SO YD	835	417			418
40200100	AGGREGATE SURFACE COURSE, TYPE A	TON	119	33			86
40201000	AGGREGATE FOR TEMPORARY ACCESS	TON	200	50			150
40600100	BITUMINOUS MATERIALS (PRIME COAT)	GALLON	5301	2741			2560
40600300	AGGREGATE (PRIME COAT)	TON	79	42			37
40600982	HOT-MIX ASPHALT SURFACE REMOVAL - BUTT JOINT	SO YD	204	84			120
40600990	TEMPORARY RAMP	SO YD	240	220			20
40603092	HOT-MIX ASPHALT BINDER COURSE, IL-19, 0 FG, N90	TON	910	398			512
40603345	HOT-MIX ASPHALT SURFACE COURSE, MIX "D", N90	TON	1580	964			616
40701966	HOT-MIX ASPHALT PAVEMENT (FULL-DEPTH), 14 1/4"	SO YD	16400	8376			8024



13

2-18-14

SUMMARY OF QUANTITIES - CONT

LOCATION:	WILLIAMSON COUNTY			
ROUTE:	URBAN - FAU 9588		RURAL - FAS 903	
FUNDING:	FED 90% (HSIP) STATE 10%	FED 90% (HSIP) STATE 10%		FED 80% (STP) STATE 20%
	ROADWAY	SN 100-0080	SN 100-0081	ROADWAY
	0004	0011	0011	0004

CODE NUMBER	ITEM DESCRIPTION	UNIT	TOTAL QUANTITY	ROADWAY	SN 100-0080	SN 100-0081	ROADWAY
40800050	INCIDENTAL HOT-MIX ASPHALT SURFACING	TON	162	6			156
42001165	BRIDGE APPROACH PAVEMENT	SQ YD	492		252	240	
44000100	PAVEMENT REMOVAL	SO YD	9376	7486			1890
42001430	BRIDGE APPROACH PAVEMENT CONNECTOR (FLEXIBLE)	SQ YD	1641		841	800	
44000155	HOT-MIX ASPHALT SURFACE REMOVAL, 1 1/2"	SO YD	5632	5632			
44000200	DRIVEWAY PAVEMENT REMOVAL	SO YD	10				10
44000600	SIDEWALK REMOVAL	SO FT	89				89
44004250	PAVED SHOULDER REMOVAL	SO YD	3928	2959			969
44201737	CLASS D PATCHES, TYPE I, 8 INCH	SO YD	313	165			148
44201741	CLASS D PATCHES, TYPE II, 8 INCH	SO YD	96	50			46
44300200	STRIP REFLECTIVE CRACK CONTROL TREATMENT	FOOT	4591	2037			2554
48100100	AGGREGATE SHOULDERS, TYPE A	TON	325	116			209
48203029	HOT-MIX ASPHALT SHOULDERS, 8"	SO YD	9409	4648			4761
48203100	HOT-MIX ASPHALT SHOULDERS	TON	849	416			433
50100300	REMOVAL OF EXISTING STRUCTURES NO. 1	EACH	1		1		

SUMMARY OF QUANTITIES - CONT

LOCATION:	WILLIAMSON COUNTY		
ROUTE:	URBAN - FAU 9588		RURAL - FAS 903
FUNDING:	FED 90% (HSIP) STATE 10%	FED 90% (HSIP) STATE 10%	FED 80% (STP) STATE 20%
	ROADWAY 0004	SN 100-0080 0011	SN 100-0081 0011
			ROADWAY 0004

CODE NUMBER	ITEM DESCRIPTION	UNIT	TOTAL QUANTITY	ROADWAY 0004	SN 100-0080 0011	SN 100-0081 0011	ROADWAY 0004
54213660	PRECAST REINFORCED CONCRETE FLARED END SECTIONS 15"	EACH	14	6			8
54213663	PRECAST REINFORCED CONCRETE FLARED END SECTIONS 18"	EACH	10	2			8
54213669	PRECAST REINFORCED CONCRETE FLARED END SECTIONS 24"	EACH	4	4			
54213681	PRECAST REINFORCED CONCRETE FLARED END SECTIONS 36"	EACH	2				2
58700300	CONCRETE SEALER	SQ FT	301			301	
59100100	GEOCOMPOSITE WALL DRAIN	SQ YD	152.5		80		72.5
60900240	TYPE C INLET BOX, STANDARD 609006	EACH	1		1		
63000001	STEEL PLATE BEAM GUARDRAIL, TYPE A, 6 FOOT POSTS	FOOT	1413	1413			
63100085	TRAFFIC BARRIER TERMINAL, TYPE 6	EACH	8	8			
63100167	TRAFFIC BARRIER TERMINAL, TYPE 1 (SPECIAL) TANGENT	EACH	8	8			
63200310	GUARDRAIL REMOVAL	FOOT	690	690			
64200108	SHOULDER RUMBLE STRIPS, 8 INCH	FOOT	16485	7626			8859
66600105	FURNISHING AND ERECTING RIGHT OF WAY MARKERS	EACH	78	26			52
67000400	ENGINEER'S FIELD OFFICE, TYPE A	CAL MO	20	12			8



*

*

*

13

* SPECIALTY ITEM

△ Z-18-14

SUMMARY OF QUANTITIES - CONT

LOCATION:	WILLIAMSON COUNTY			
ROUTE:	URBAN - FAU 9588		RURAL - FAS 903	
FUNDING:	FED 90% (HSIP) STATE 10%	FED 90% (HSIP) STATE 10%		FED 80% (STP) STATE 20%
	ROADWAY 0004	SN 100-0080 0011	SN 100-0081 0011	ROADWAY 0004

CODE NUMBER	ITEM DESCRIPTION	UNIT	TOTAL QUANTITY	ROADWAY 0004	SN 100-0080 0011	SN 100-0081 0011	ROADWAY 0004
* 78000100	THERMOPLASTIC PAVEMENT MARKING - LETTERS AND SYMBOLS	SQ FT	159	159			
* 78000200	THERMOPLASTIC PAVEMENT MARKING - LINE 4"	FOOT	28597	16039			12558
* 78000600	THERMOPLASTIC PAVEMENT MARKING - LINE 12"	FOOT	308	308			
* 78000650	THERMOPLASTIC PAVEMENT MARKING - LINE 24"	FOOT	96	96			
* 78100100	RAISED REFLECTIVE PAVEMENT MARKER	EACH	183	126			57
* 78200420	GUARDRAIL MARKERS, TYPE B	EACH	32	32			
* 78201000	TERMINAL MARKER - DIRECT APPLIED	EACH	8	8			
78300200	RAISED REFLECTIVE PAVEMENT MARKER REMOVAL	EACH	42	28			14
* F3006512	SEEDLING DIOSPIROS VIRGINIANA (PERSIMMON), 2-YEAR OLD, BARE ROOT	UNIT	88	88			
X5860110	GRANULAR BACKFILL FOR STRUCTURES	CU YD	284		152	132	
X7011830	TRAFFIC CONTROL AND PROTECTION, STANDARD BLR 21	EACH	1	1			
Z0018002	DRAINAGE SCUPPERS, DS-11	EACH	2			2	
* Z0013798	CONSTRUCTION LAYOUT	L SUM	1	1			
Z0034105	MATERIAL TRANSFER DEVICE	TON	5332	2902			2430

* SPECIALTY ITEM

2-18-14

SUMMARY OF QUANTITIES - CONT

			LOCATION:	WILLIAMSON COUNTY			
			ROUTE:	URBAN - FAU 9588			RURAL - FAS 903
			FUNDING:	FED 90% (HSIP) STATE 10%	FED 90% (HSIP) STATE 10%		FED 80% (STP) STATE 20%
CODE NUMBER	ITEM DESCRIPTION	UNIT	TOTAL QUANTITY	ROADWAY 0004	SN 100-0080 0011	SN 100-0081 0011	ROADWAY 0004
Z0046304	PIPE UNDERDRAINS FOR STRUCTURES 4"	FOOT	293		173	120	
Z0048665	RAILROAD PROTECTIVE LIABILITY INSURANCE	L SUM	1	1			
∅ Z0076600	TRAINEES	HOURL	1500	1500			
Z0065100	SETTLEMENT PLATFORMS	EACH	4	2	2		
∅ Z0076604	TRAINEES TRAINING PROGRAM GRADUATE	HOURL	1500	1500			
* F30041Y2	SEEDLING CARYA ILLINOENSIS (PECAN), 2-YEAR OLD, BARE ROOT	UNIT	88	88			
* A2C00603	TREE, DIOSPYROS VIRGINIANA (PERSIMMON), CONTAINER GROWN, 3-GALLON	EACH	88	88			
* F30070Y2	SEEDLING FRAXINUS PENNSYLVANICA (GREEN ASH), 2-YEAR OLD, BARE ROOT	UNIT	89	89			
* A2C02263	TREE, CARYA ILLINOENSIS (PECAN), CONTAINER GROWN, 3-GALLON	EACH	88	88			
* F30085Y2	SEEDLING LIQUIDAMBAR STYRACIFLUA (AMERICAN SWEETGUM), 2-YEAR OLD, BARE ROOT	UNIT	88	88			
* A2C03063	TREE, FRAXINUS PENNSYLVANICA (GREEN ASH), CONTAINER GROWN, 3-GALLON	EACH	89	89			
* F30090Y2	SEEDLING PLATANUS OCCIDENTALIS (SYCAMORE), 2-YEAR OLD, BARE ROOT	UNIT	89	89			
* A2C07163	TREE, LIQUIDAMBAR STYRACIFLUA (AMERICAN SWEETGUM), CONTAINER GROWN, 3-GALLON	EACH	88	88			
* F30130Y2	SEEDLING QUERCUS BICOLOR (SWAMP WHITE OAK), 2-YEAR OLD, BARE ROOT	UNIT	88	88			
* A2C04063	TREE, PLATANUS OCCIDENTALIS (SYCAMORE), CONTAINER GROWN, 3-GALLON	EACH	89	89			
* A2C05063	TREE, QUERCUS BICOLOR (SWAMP WHITE OAK), CONTAINER GROWN, 3-GALLON	EACH	88	88			

* SPECIALTY ITEM

∅ 0042

1 2-18-14

F.A.U. RTE.	SECTION	COUNTY	TOTAL SHEETS	SHEET NO.
9588*	3901-LB-27	WILLIAMSDB	224	36
STA 30+00		TO STA 45+00		
FED. ROAD DIST. NO.		ILLINOIS FED. AID PROJECT		
* & FAS 905				

CH 18277

PROP. CURVE C23
 PI STA. = 28+80.39
 $\Delta = 27^\circ 36' 23''$ (LT)
 $D = 1^\circ 54' 35''$
 $R = 3,000.00'$
 $T = 737.05'$
 $L = 1,445.47'$
 $E = 89.21'$
 $e = 4.4\%$
 $T.R. = 62'$
 $S.E. RUN = 182'$
 $P.C. STA. = 21+43.33$
 $P.T. STA. = 35+88.81$

RAILROAD OMISSION
 STA 38+10.92 TO STA 38+20.92

STA 40+11.60 (HERRIN ROAD)=
 STA 12+35.68 (BANDYVILLE ROAD)
 (FOR P&B SEE SHEET 43)

PROP. CURVE BANDYNEW2-1SHLD
 PI STA. = 11+31.53
 $\Delta = 26^\circ 52' 54''$ (LT)
 $D = 16^\circ 22' 13''$
 $R = 350.00'$
 $T = 83.65'$
 $L = 164.21'$
 $E = 9.86'$
 $P.C. STA. = 10+47.89$
 $P.T. STA. = 12+12.10$

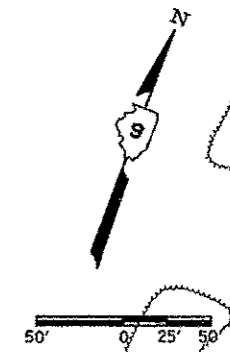
PIPE CULVERTS, CLASS A, TYPE 2 18"
 2 - PRC FLAR END SEC 18
 130 FT
 USFL 385.94, 64.4' LT, STA 39+47.2
 DSFL 385.67, 65.5' RT, STA 40+17.1

FOR CROSS SECTIONS
 SEE SHEETS 220 TO 222

GUARDRAIL REMOVAL
 RT STA 32+99.66 EX TO STA 34+83.81 EX
 LT STA 33+98.90 EX TO STA 35+91.56 EX

EX SN 100-3008
 @ STA 34+44; SKEWED 35° (TBR)

2-18-14

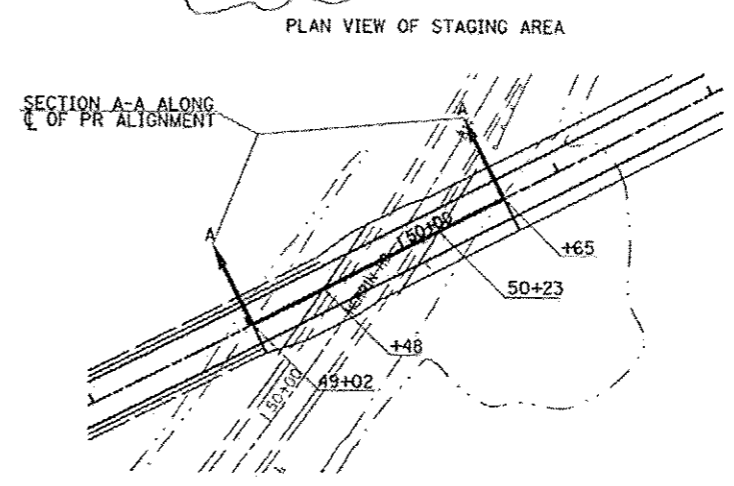
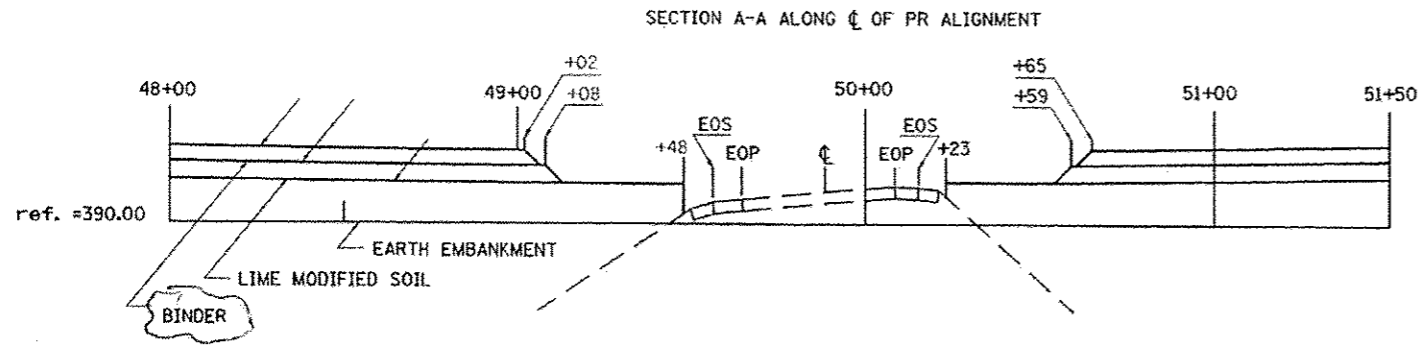


PLAN HERRIN ROAD STA 30+00 TO STA 45+00

2/1/2014
 C:\work\pdx\1001\1001.dwg
 *REF: 10013
 *REF: 10123

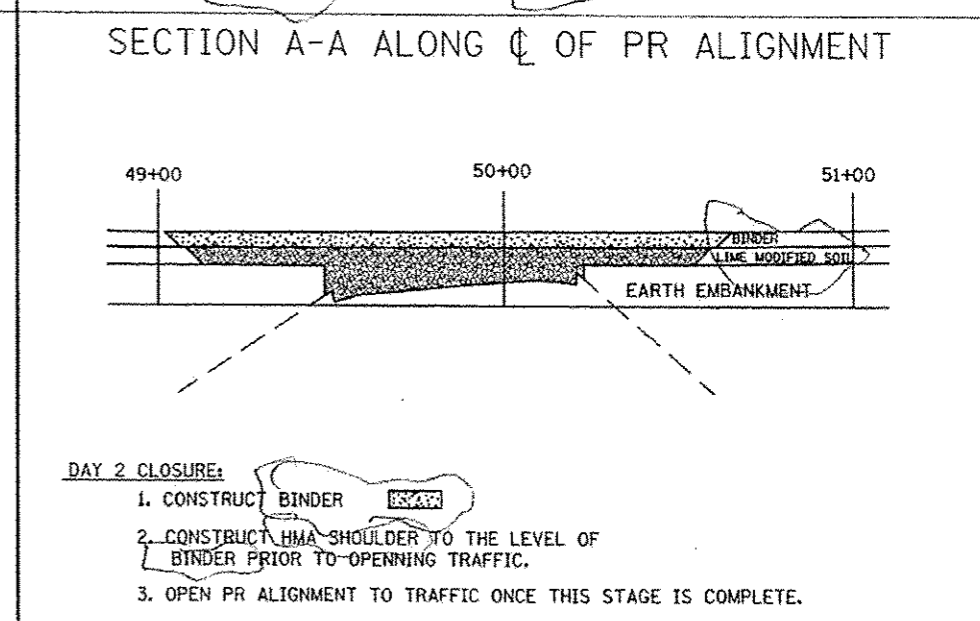
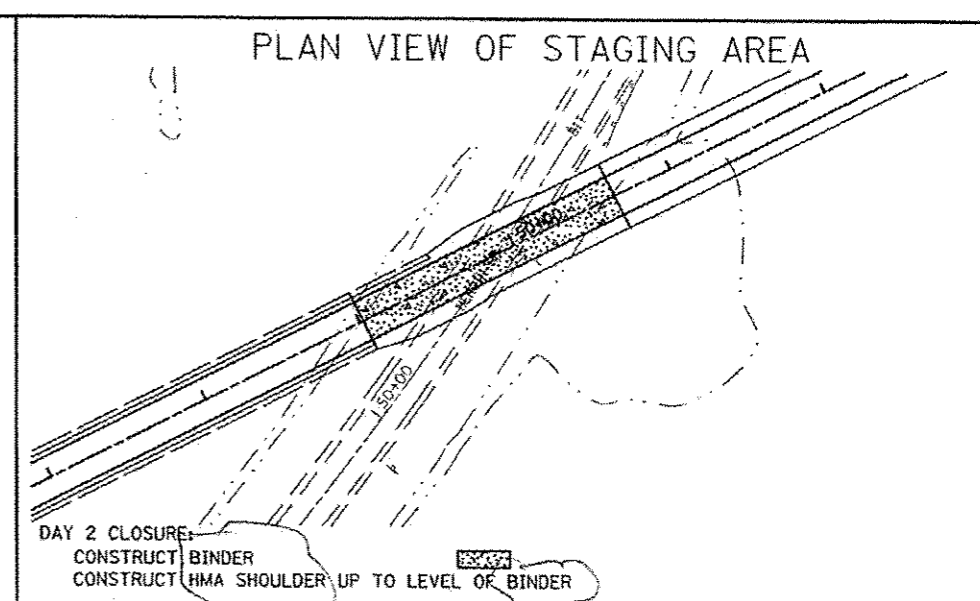
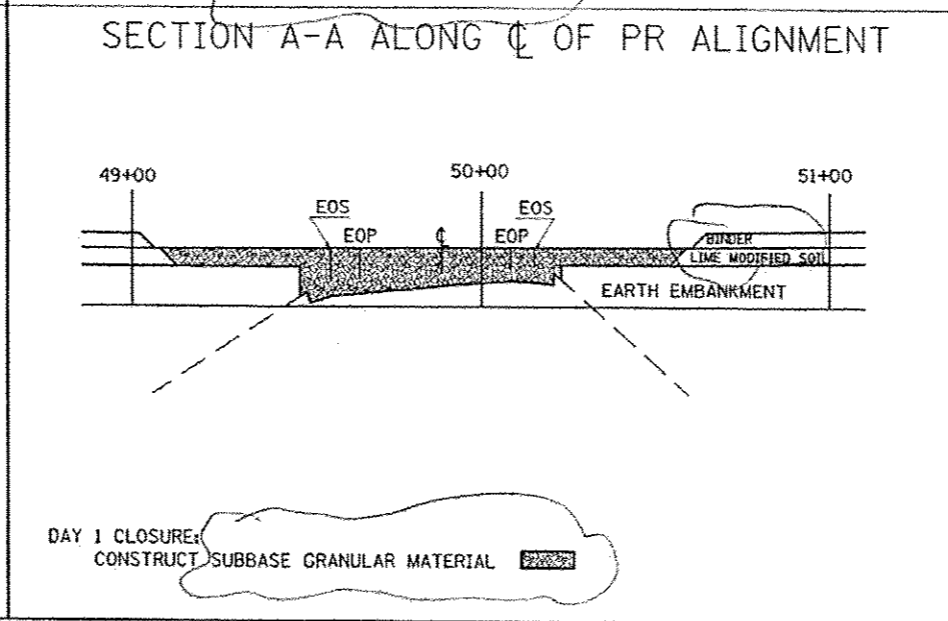
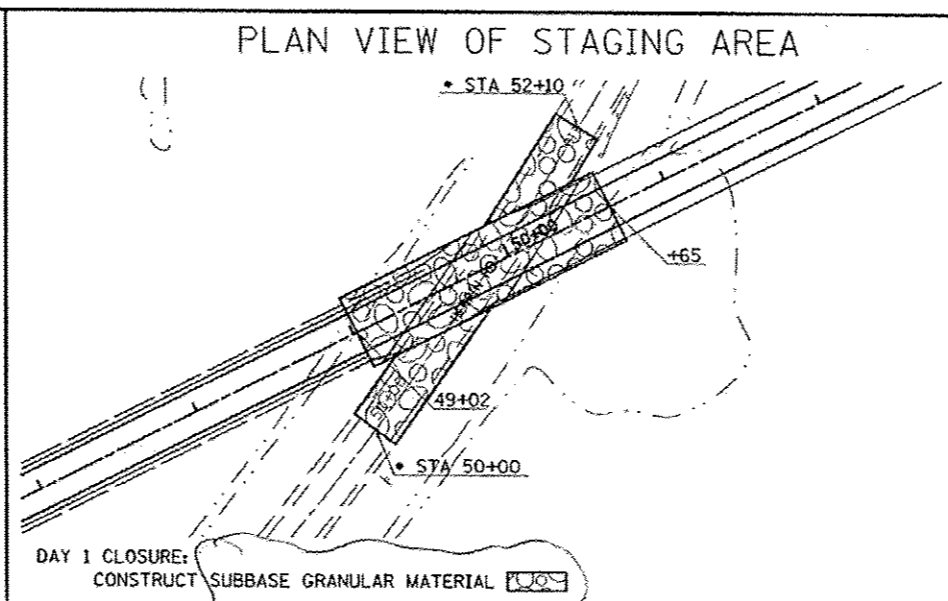
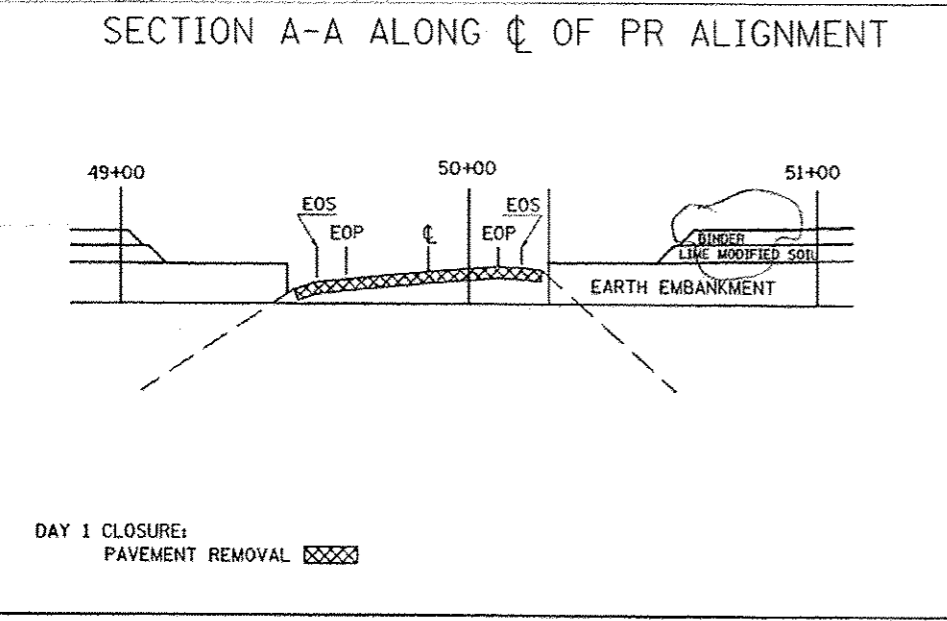
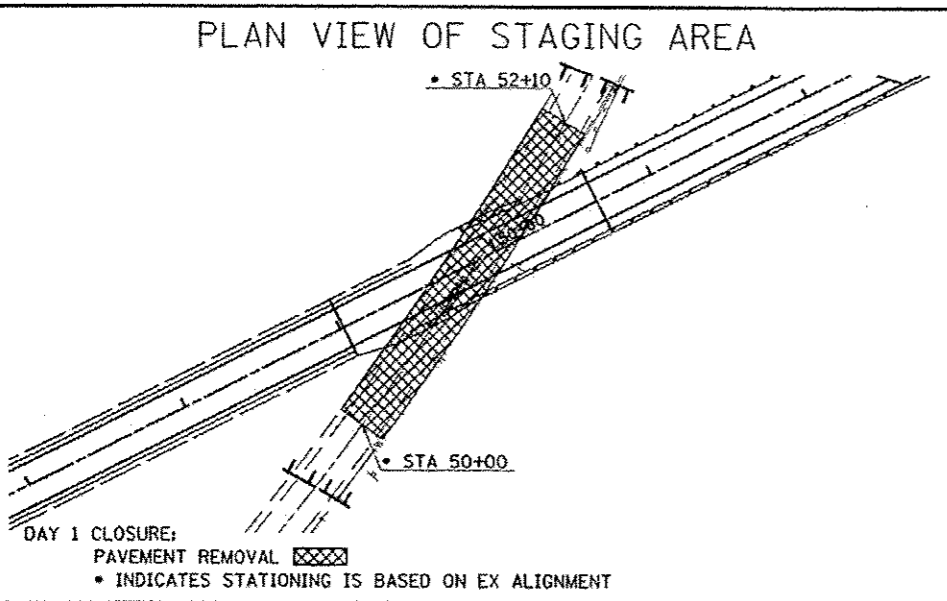
PRE-STAGE - TRAFFIC IS ON THE EXISTING ALIGNMENT

F.A.M. RTE.	SECTION	COUNTY	TOTAL SHEETS	SHEET NO.
9585	399-10-LB-D	WILLIAMSCH	224	48
FED. ROAD DIST. NO.	ILLINOIS	FED. AID PROJECT		
		• & FAS 903		CH 18277



- PRE-STAGE NOTES:**
1. THE ENTIRE PR ALIGNMENT INCLUDING THE BANDYVILLE AND CHITTYVILLE ROAD RELOCATIONS MUST BE COMPLETED PRIOR TO STARTING THIS STAGE OF CONSTRUCTION.
 2. CONSTRUCT EARTH EMBANKMENT, LIME MODIFIED SOIL AND BINDER TO LIMITS AS SHOWN.

NOTES:
CONSTRUCT EARTH EMBANKMENT, LIME MODIFIED SOIL, AND BINDER TO LIMITS AS SHOWN ABOVE.



▲ REVISED SHEET 2-18-14

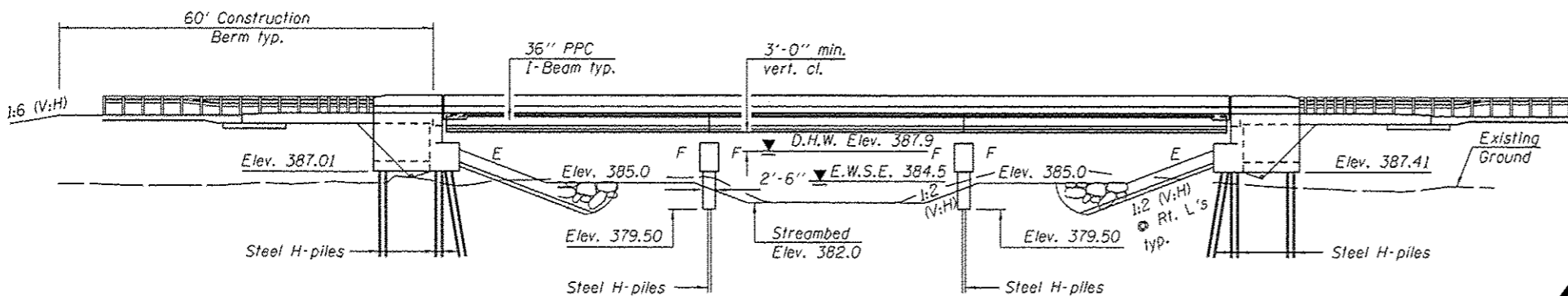
STAGED CONSTRUCTION DETAIL

Bench Mark: #134 Square cut in wingwall S.N. 100-3009. Elevation 392.28

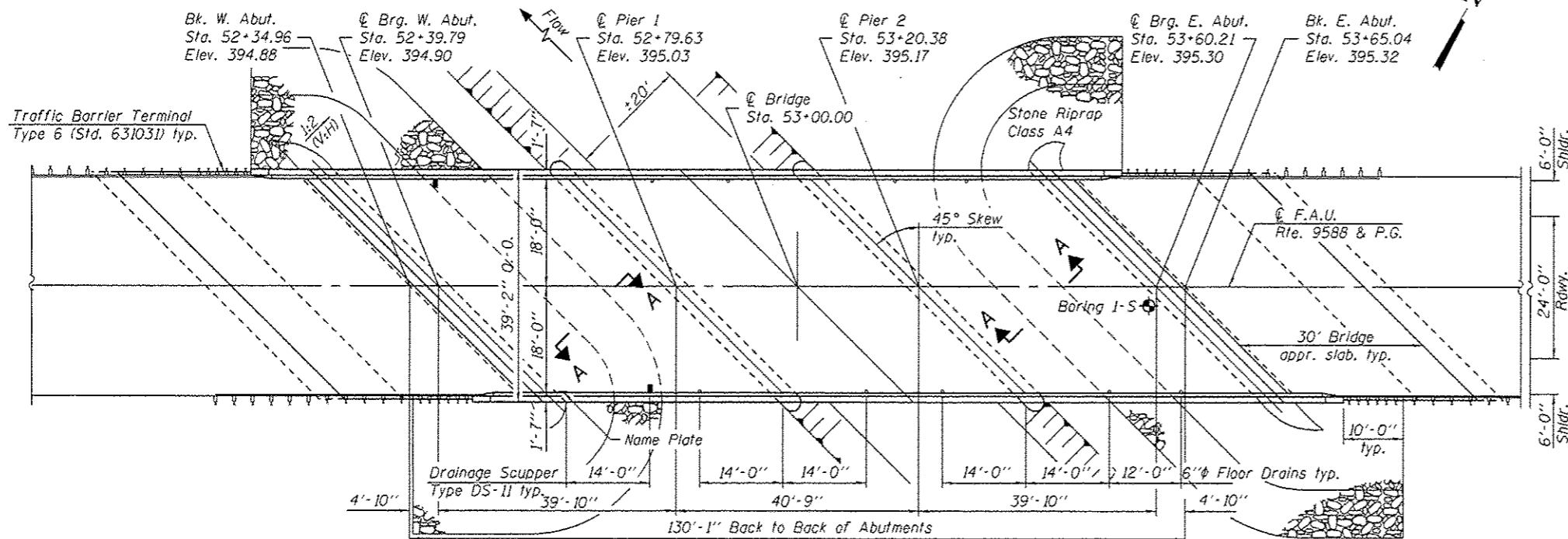
Existing Structure:

S.N. 100-3009 built 1956 as F.A.S. Route 906, Section 390 at Station 53+56. Structure consists of three span steel WF beams and reinforced concrete deck supported by spill-thru abutments and open concrete pile bent piers. 81'-6" back-to-back abutments, 30'-4 1/2" out-to-out deck. Traffic to be maintained on existing structure during construction. Existing structure to be removed after construction complete and traffic shifted to new alignment.

No Salvage



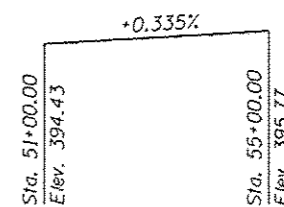
ELEVATION



PLAN

INDEX OF SHEETS

- 1 - General Plan and Elevation
- 2 - General Data
- 3-4 - Top of Slab Elevations
- 5-6 - Top of Approach Slab Elevations
- 7-8 - Superstructure
- 9 - Diaphragm Details
- 10-11 - Bridge Approach Slab Details
- 12 - Preformed Joint Strip Seal
- 13 - Drainage Scupper, DS-II
- 14 - Framing Plan
- 15-18 - 36" PPC I-Beam Details
- 19 - Bearing Details
- 20-21 - Abutments
- 22-23 - Piers
- 24 - HP Pile Details
- 25 - Bar Splicer Assembly Details
- 26 - Soil Boring Logs



PROFILE GRADE
(along centerline of roadway)

STATION 53+00.00
BUILT 201 BY
STATE OF ILLINOIS
F.A.U. RT. 9588 SEC. 39B-2
LOADING HS20-44
STR. NO. 100-0081

NAME PLATE
See Std. 515001

Note:
For Section A-A, see sheet 2 of 26.

▲ SHEET ADDED 2-18-14

LOADING HS20-44
Allow 50#/sq. ft. for future wearing surface.
DESIGN SPECIFICATIONS
2002 AASHTO

SEISMIC DATA
Seismic Performance Category (SPC) = B
Bedrock Acceleration Coefficient (A) = 12%
Site Coefficient (S) = 1.0

DESIGN STRESSES

FIELD UNITS
f_c = 3,500 psi
f_y = 60,000 psi (reinforcement)

PRECAST PRESTRESSED UNITS

f_c = 6,000 psi
f_{ci} = 5,000 psi
f_g = 270,000 psi (1/2" low lax. strands)
f_{sl} = 201,960 psi (1/2" low lax. strands)

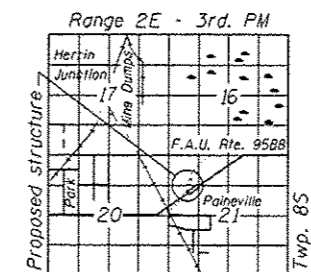
DESIGN SCOUR ELEVATION TABLE

Design Scour Elevation (ft.)	W. Abut.	Pier 1	Pier 2	E. Abut.
	387.01	375.00	375.00	387.41

WATERWAY INFORMATION

Flood	Freq. Yr.	C.F.S.	Opening Sq. Ft.		Head - Ft.		Headwater El.		
			Exist.	Prop.	Exist.	Prop.	Exist.	Prop.	
Design	50	1120	264.0	268.4	387.9	1.6	1.2	389.5	389.1
Base	100	1270	271.0	275.5	388.0	1.9	1.3	389.9	389.3
Max. Calc.	500	1600	296.9	304.7	388.4	2.1	1.5	390.5	389.9

10 Year velocity through Exist. Bridge = 3.3 fps 10 Year velocity through Prop. Bridge = 3.3 fps



LOCATION SKETCH

GENERAL PLAN & ELEVATION
HERRIN ROAD OVER
UNNAMED TRIBUTARY OF POND CREEK
F.A.U. ROUTE 9588- SECTION 39B-2
WILLIAMSON COUNTY
STATION 53+00.00
STRUCTURE NO. 100-0081



EXPIRES 11-30-2014

DESIGNED - Mark Smith	EXAMINED - Jay F. Puze	DATE - JANUARY 24, 2014
CHECKED - Stephen M. Ryan	PASSED - Jay F. Puze	REVISIONS
DRAWN - W.D.C. / M.B.M.	ACTING ENGINEER OF BRIDGES AND STRUCTURES	REVISIONS
CHECKED - FTIGRA		

STATE OF ILLINOIS
DEPARTMENT OF TRANSPORTATION

SHEET NO. 1 OF 26 SHEETS

F.A.U. RTE.	SECTION	COUNTY	TOTAL SHEETS	SHEET NO.
9588	39B-2	WILLIAMSON	224	94
CONTRACT NO. 78277				
ILLINOIS FED. AID PROJECT				