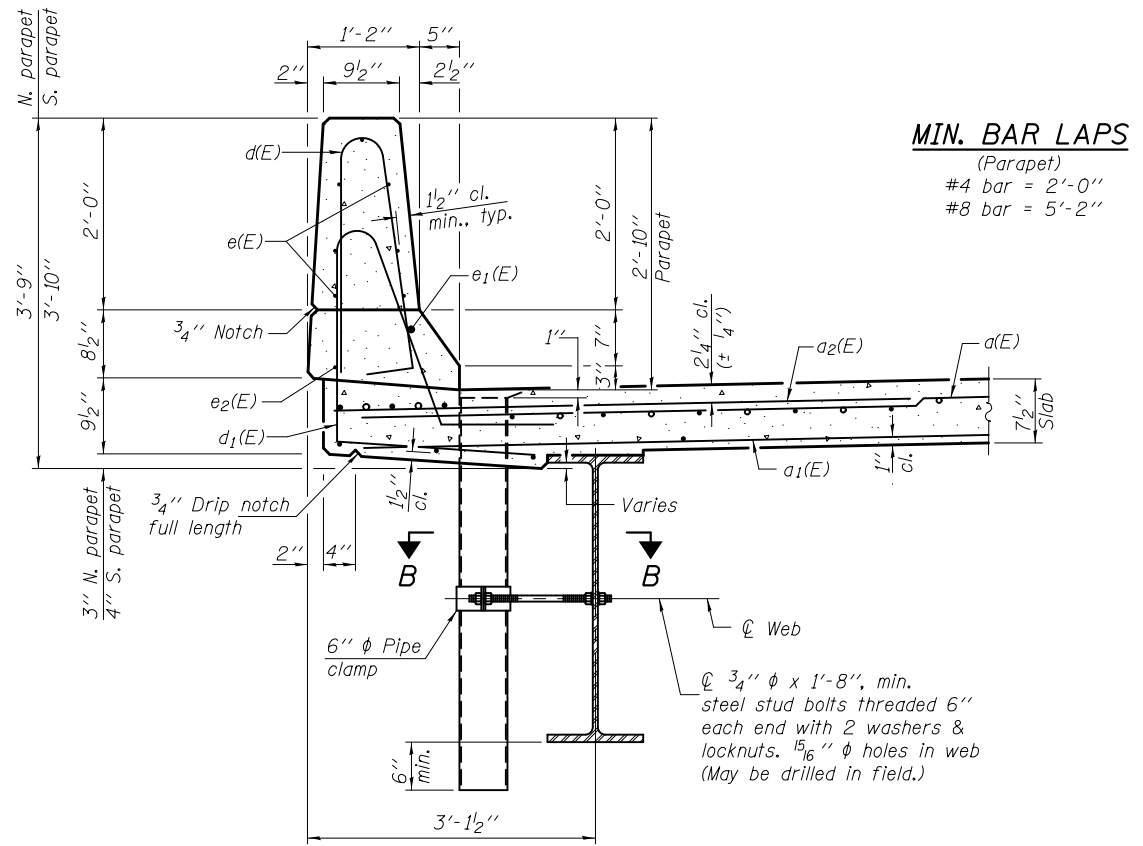
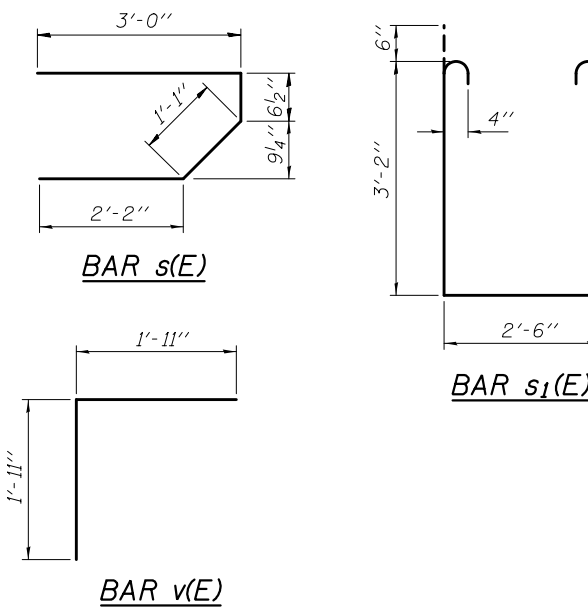
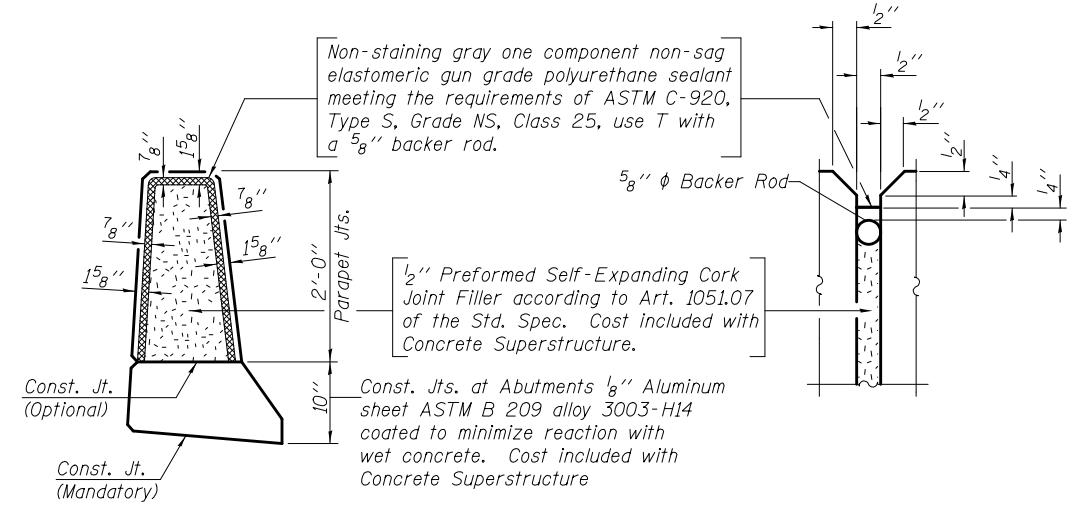


**INSIDE ELEVATION OF PARAPET**  
(Looking north)



**SECTION THRU PARAPET**

**MIN. BAR LAPS**  
(Parapet)  
#4 bar = 2'-0"  
#8 bar = 5'-2"



**PARAPET JOINT DETAILS**

Notes:  
Fiberglass pipe shall conform to ASTM D 2996, with short-time rupture strength hoop tensile stress of 30,000 p.s.i. minimum.  
Galvanize clamping device according to AASHTO M232. Cost of clamping device and inserts is included with Floor Drains.  
Floor drains need not be painted.

**SUPERSTRUCTURE BILL OF MATERIAL**

Bar	No.	Size	Length	Shape
a(E)	115	#5	38'-6"	—
a1(E)	90	#5	36'-10"	—
a2(E)	116	#6	6'-6"	—
a3(E)	4	#5	44'-6"	—
b(E)	84	#5	35'-0"	—
b1(E)	108	#5	24'-5"	—
d(E)	148	#5	5'-7"	⌒
d1(E)	148	#5	7'-11"	⌒
e(E)	56	#4	16'-5"	—
e1(E)	4	#8	35'-11"	—
e2(E)	4	#4	34'-4"	—
m(E)	10	#6	44'-10"	—
m1(E)	24	#6	11'-0"	—
m2(E)	10	#6	7'-3"	—
m3(E)	4	#6	3'-3"	—
s(E)	82	#5	6'-10"	⌒
s1(E)	72	#4	9'-10"	⌒
v(E)	80	#5	3'-10"	⌒
Reinforcement Bars, Epoxy Coated			Pound	20960
Concrete Superstructure			Cu. Yds.	107.3

Bars indicated thus 1 x 2-#4 etc. indicates 1 line of bars with 2 lengths per line.

