

STATE OF ILLINOIS
DEPARTMENT OF TRANSPORTATION
DIVISION OF HIGHWAYS

F.A.R. RTE.	SECTION	COUNTY	TOTAL SHEETS	SHEET NO.
*	D9 PAVT PRESERV 2014-1	JACKSON/POPE	23	1
		ILLINOIS	CONTRACT NO. 78366	

*FAP 42 (IL 13/127) & FAP 885 (IL 146)

FOR INDEX OF SHEETS, SEE SHEET NO. 3

IL 13/127

ADT: 7900 (2011)

PC - 7375

MU - 275

SU - 250

IL 146

ADT: 2150 (2013)

PC - 1969

MU - 18

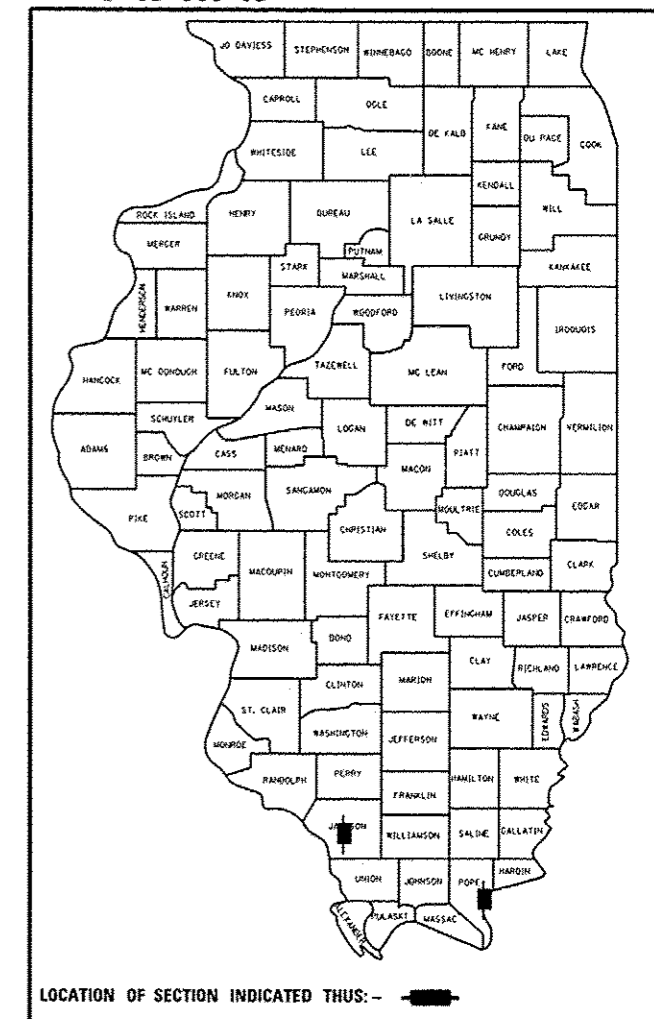
SU - 163

**PROPOSED
HIGHWAY PLANS**

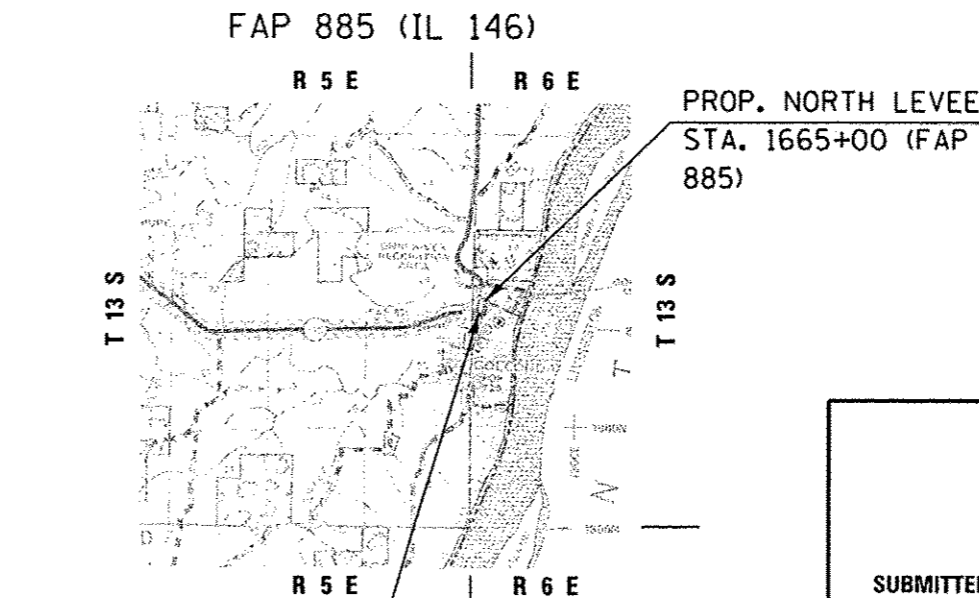
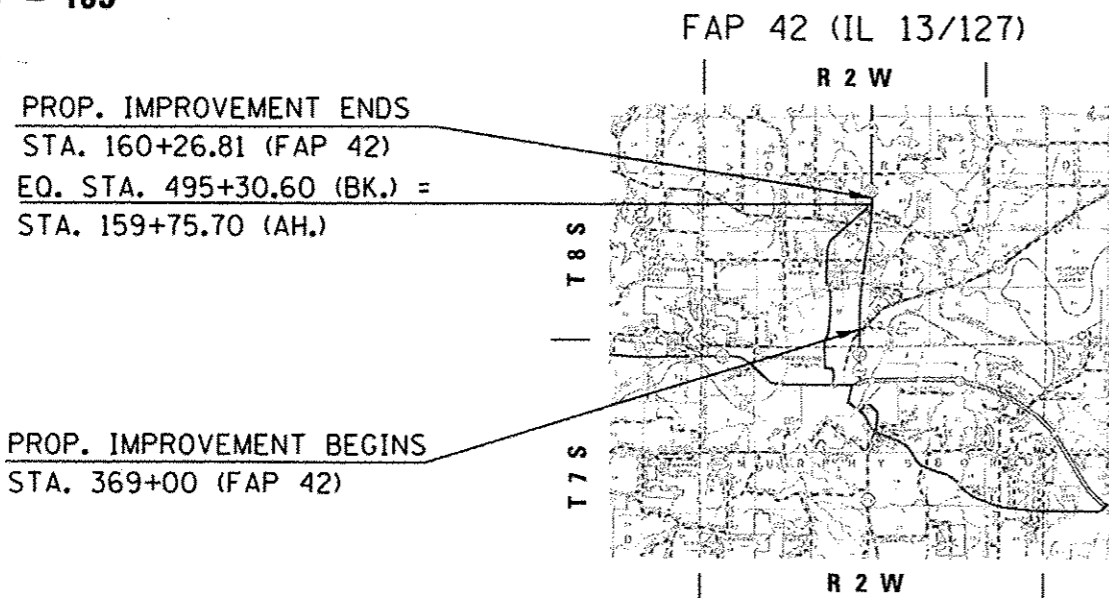
FAP RTE 42 (IL 13/127) & FAP RTE 885 (IL 146)
SECTION D9 PAVT PRESERVATION 2014-1

**MICROSURFACING & ULTRA THIN HMA SURFACE COURSE
JACKSON/POPE COUNTY**

D-99-035-13



C-99-037-13



STATE OF ILLINOIS
DEPARTMENT OF TRANSPORTATION
DIVISION OF HIGHWAYS

SUBMITTED December 4 20 13

Jeffrey J. Kamin
DEPUTY DIRECTOR OF HIGHWAYS, REGION ENGINEER

Jan 24 20 14
John D. Baranzelli, P.E.
acting ENGINEER OF DESIGN AND ENVIRONMENT

Jan 24 20 14
Omer Osman, P.E.
DIRECTOR OF HIGHWAYS, CHIEF ENGINEER

EQ. STA. 495 + 30.60 (BK.) =
STA. 159 + 75.70 (AH.)

TOWNSHIP: MURPHYSBORO; GOLCONDA NO. 3

J.U.L.I.E.
JOINT UTILITY LOCATION INFORMATION FOR EXCAVATION
1-800-892-0123
OR 811

FAP 42:
GROSS & NET LENGTH = 12,681.71 FT. = 2.40 MILE

FAP 885:
GROSS LENGTH & NET LENGTH = 83 FT. = 0.02 MILE
TOTAL GROSS & NET LENGTH = 12764.71 FT. = 2.42 MILES

PROJECT ENGINEER CHARLES STEIN: 618-351-5210
PROJECT DESIGNER KATHI MCCORD: 618-351-5319

CONTRACT NO. 78366

PRINTED BY THE AUTHORITY
OF THE STATE OF ILLINOIS

Prepared By: *Joe Blaufarmer*
DISTRICT STUDIES & PLANS ENGINEER

Examined By: *[Signature]*
DISTRICT LAND ACQUISITION ENGINEER

Examined By: *Carrie Nelson*
DISTRICT PROGRAM DEVELOPMENT ENGINEER

Examined By: *Ken Kelly*
DISTRICT OPERATIONS ENGINEER

Examined By: *[Signature]*
DISTRICT PROJECT IMPLEMENTATION ENGINEER

Examined By: *Daryl J. Meisid*
DISTRICT CONSTRUCTION ENGINEER

Examined By: *Bruce W. Peck*
DISTRICT MATERIALS ENGINEER

*FAP 42(IL 13/127) & FAP 885(IL 146)

FILE NAME *	USER NAME * mcoardkr	DESIGNED -	REVISED -	STATE OF ILLINOIS DEPARTMENT OF TRANSPORTATION	SIGNATURE SHEET				F.A.P. RTE.	SECTION	COUNTY	TOTAL SHEETS	SHEET NO.
g:\pawork\paw\dot\mcoardkr\08342339\78	66-sht-pln.dgn	DRAWN -	REVISED -		09	PAVT PRESERV 2014-1	JACKSON/POPE	23	2				
MODEL NAME *	PLOT SCALE * 100.0000 / in.	CHECKED -	REVISED -		SCALE: _____ SHEET _____ OF _____ SHEETS STA. _____ TO STA. _____				ILLINOIS FED. AID PROJECT		CONTRACT NO. 78366		
	PLOT DATE * 11/21/2013	DATE -	REVISED -										

INDEX OF SHEETS

GENERAL NOTES

SHEET NO.	DESCRIPTION
1	COVER SHEET
2	SIGNATURE BLOCK
3	INDEX OF SHEETS; HIGHWAY STANDARDS; GENERAL NOTES
4	SUMMARY OF QUANTITIES
5-8	TYPICAL SECTIONS
9	RESURFACING SCHEDULE - FAP 42 (IL 13/127)
10-11	PAVEMENT MARKING SCHEDULE - FAP 42 (IL 13/127)
12	RESURFACING & PAVEMENT MARKING SCHEDULE - FAP 885 (IL 146)
13-21	PLAN SHEETS - FAP 42 (IL 13/127) STA. 369+00 TO STA. 160+26.81
22-23	PLAN SHEETS - FAP 885 (IL 146) WEST & NORTH LEVEES AT GOLCONDA

THE AGGREGATE TO BE USED IN THE MICRO-SURFACING SHALL BE TYPE II APPLIED AT 16 LB/SQ YD PER PASS.

BITUMINOUS MATERIAL (PRIME COAT) SHALL BE APPLIED PRIOR TO PLACING THE FIRST PASS OF MICRO-SURFACING AT A RATE OF 0.05 - 0.10 GAL/SQ. YD. THIS SAME RATE APPLIES TO THE RAPID SETTING POLYMER MODIFIED EMULSION USED ON FAP 885 (IL 146) AT THE LEVEE LOCATIONS OR AS SPECIFIED BY THE RESIDENT ENGINEER.

THE QUANTITY OF SHORT TERM PAVEMENT MARKING SHOWN IN THE PLANS WAS BASED ON ONE APPLICATION EACH FOR 1 LAYER OF SURFACE TREATMENT.

PRIOR TO PLACEMENT OF THE FINAL PAVEMENT MARKINGS THE RESIDENT ENGINEER SHALL CONTACT THE BUREAU OF OPERATIONS AND ARRANGE FOR INSPECTION AND APPROVAL OF THE PAVEMENT MARKING LAYOUT.

THE CONTRACTOR SHALL PRESERVE EXISTING STAMPED STATIONING.

THE CONTRACTOR SHOULD FOLLOW THE EXISTING HOT-MIX LAYOUT AS CLOSELY AS POSSIBLE. EACH INDIVIDUAL LANE SHOULD BE DONE EDGE TO EDGE IN ONE PASS.

HIGHWAY STANDARDS

- 701201-04
- 701301-04
- 701306-03
- 701422-06
- 701426-06
- 701901-03
- 780001-04
- 781001-03

*FAP 42(IL 13/127) & FAP 885(IL 146)

FILE NAME c	USER NAME # mcaordkr	DESIGNED -	REVISED -	STATE OF ILLINOIS DEPARTMENT OF TRANSPORTATION	INDEX OF SHEETS, STANDARDS AND GENERAL NOTES				F.A.P. RTE.	SECTION	COUNTY	TOTAL SHEETS	SHEET NO.	
or\p\work\p\stdat\mcaordkr\0342339\78	66-shr-pln.dgn	DRAWN -	REVISED -		SCALE:	SHEET	OF	SHEETS	STA.	TO STA.	D9 PAVT PRESERV 2014-1	JACKSON/POPE	23	3
Default	PLOT SCALE # 100.0000 // in.	CHECKED -	REVISED -		CONTRACT NO. 78366									
	PLOT DATE # 12/17/2013	DATE -	REVISED -		[ILLINOIS] FED. AID PROJECT									

SUMMARY OF QUANTITIES

SUMMARY OF QUANTITIES				FAP 42 (IL 13/127)	FAP 885 (IL 146)
				RURAL	RURAL
				100% STATE	100% STATE
				MICROSURFACING	UTHMASC
				JACKSON	POPE
CODE NUMBER	ITEM DESCRIPTION	UNIT	TOTAL QUANTITY	0005 QUANTITY	0005 QUANTITY
X0325536	RAPID SETTING POLYMER MODIFIED EMULSION	GALLON	22		22
X0326129	ULTRA-THIN HOT-MIX ASPHALT SURFACE COURSE	SQ YD	240		240
X0326218	FIBER-MODIFIED ASPHALT CRACK SEALING	FOOT	64094	64094	
X0326767	PROFILE DIAMOND GRINDING CONCRETE PAVEMENT	SQ YD	240		240
Z0063804	MICROSURFACING, SINGLE PASS, TYPE II, MIXTURE D	SQ YD	83189	83189	
40600100	BITUMINOUS MATERIALS (PRIME COAT)	GALLON	7493	7493	
67100100	MOBILIZATION	L SUM	1	0.5	0.5
70100450	TRAFFIC CONTROL AND PROTECTION, STANDARD 701201	L SUM	1		1
70100460	TRAFFIC CONTROL AND PROTECTION, STANDARD 701306	L SUM	1		1
70100320	TRAFFIC CONTROL AND PROTECTION, STANDARD 701422	L SUM	1	1	
70300100	SHORT- TERM PAVEMENT MARKING	FOOT	4919	4895	24
70300210	TEMPORARY PAVEMENT MARKING - LETTERS & SYMBOLS	SQ FT	556.2	556.2	
70300220	TEMPORARY PAVEMENT MARKING - LINE 4"	FOOT	57254	56984	270
70300260	TEMPORARY PAVEMENT MARKING - LINE 12"	FOOT	545	545	
70300280	TEMPORARY PAVEMENT MARKING - LINE 24"	FOOT	104	104	
70301000	WORK ZONE PAVEMENT MARKING REMOVAL	SQ FT	4459	4416	43
78000100	THERMOPLASTIC PAVEMENT MARKING, LETTERS & SYMBOLS	SQ FT	556.2	556.2	
78000200	THERMOPLASTIC PAVEMENT MARKING - LINE 4"	FOOT	57254	56984	270
78000600	THERMOPLASTIC PAVEMENT MARKING - LINE 12"	FOOT	545	545	
78000650	THERMOPLASTIC PAVEMENT MARKING - LINE 24"	FOOT	104	104	
78100100	RAISED REFLECTIVE PAVEMENT MARKER	EACH	480	478	2
78300100	PAVEMENT MARKING REMOVAL	SQ FT	19654	19562	92
78300200	RAISED REFLECTIVE PAVEMENT MARKER REMOVAL	EACH	480	478	2

23

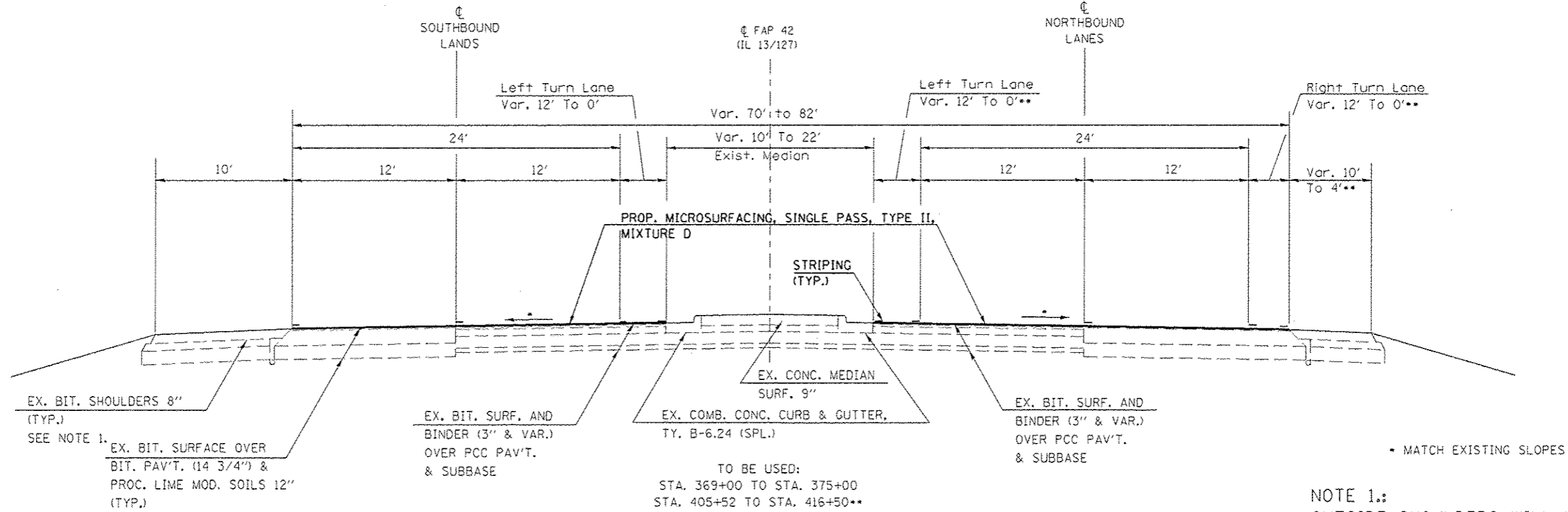
*FAP 42(IL 13/127) & FAP 885(IL 146)

FILE NAME =	USER NAME = mcoorakr	DESIGNED -	REVISED -	STATE OF ILLINOIS DEPARTMENT OF TRANSPORTATION	SUMMARY OF QUANTITIES			F.A.P. RTE.	SECTION	COUNTY	TOTAL SHEETS	SHEET NO.
cr:\pwork\pksdat\mcoorakr\0342339\70366-shc-pln.dgn		DRAWN -	REVISED -		SCALE: SHEET OF SHEETS STA. TO STA.			-	D9 PAVT PRESERV 2014-1	JACKSON/POPE	23	4
		CHECKED -	REVISED -									
Default		DATE -	REVISED -									

ILLINOIS FED. AID PROJECT

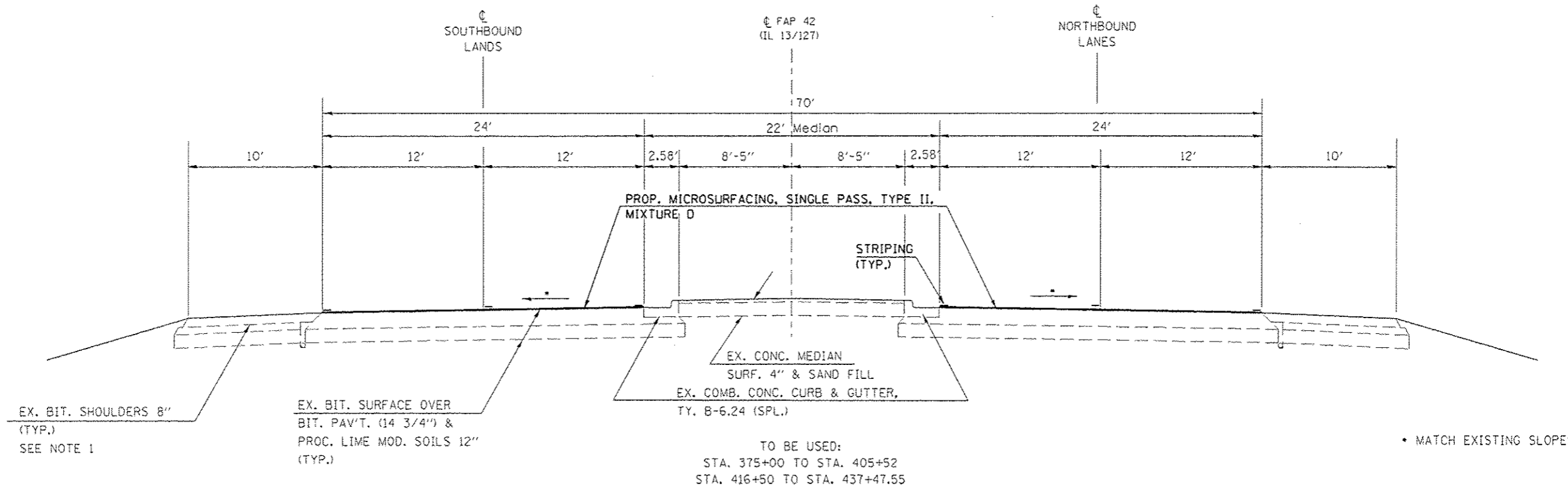
CONTRACT NO. 78366

TYPICAL SECTION #1



NOTE 1:
OUTSIDE SHOULDERS WILL NOT BE MICROSURFACED.

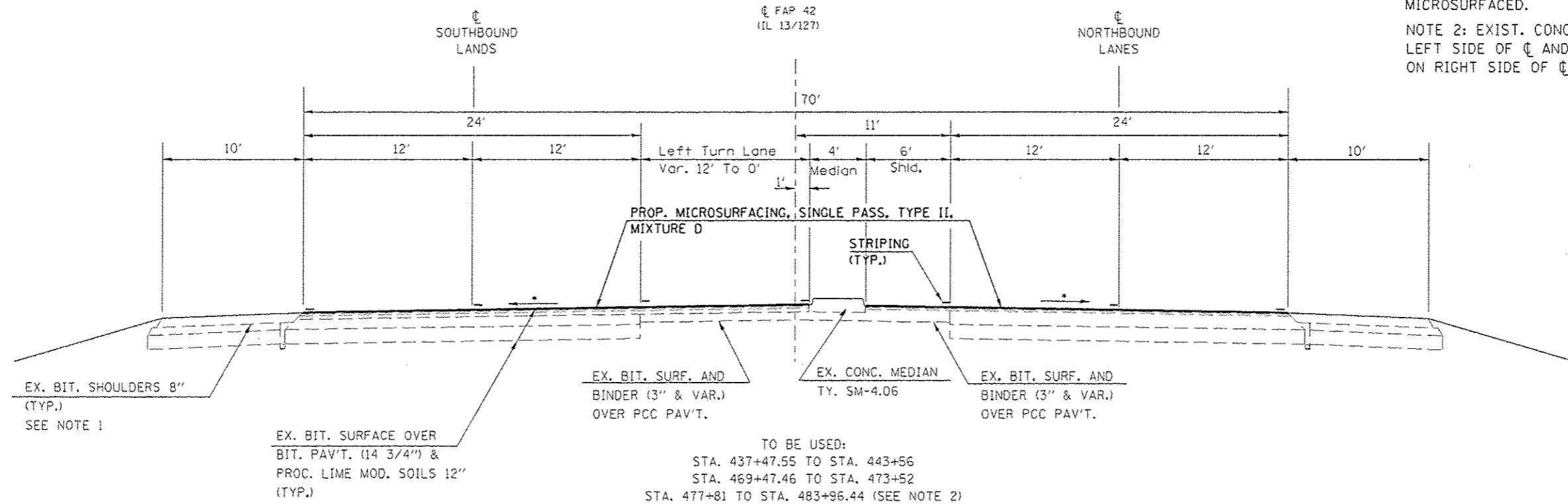
TYPICAL SECTION #2



*FAP 42(1L 13/127) & FAP 885(1L 146)

FILE NAME =	USER NAME = msoarokr	DESIGNED -	REVISED -	STATE OF ILLINOIS DEPARTMENT OF TRANSPORTATION	TYPICAL SECTIONS 1 & 2			F.A.P. RTE.	SECTION	COUNTY	TOTAL SHEETS	SHEET NO.
ct:\work\pavdat\msoarokr\10342329\78	06-shtrp1.dgn	DRAWN -	REVISED -		09 PAVT PRESERV 2014-1	JACKSON/POPE	23	5				
PLOT SCALE = 1/8" = 1' / 3/4"		CHECKED -	REVISED -		CONTRACT NO. 78366							
Default	PLOT DATE = 12/4/2013	DATE -	REVISED -		SCALE:	SHEET	OF	SHEETS	STA.	TO STA.	ILLINOIS FED. AID PROJECT	

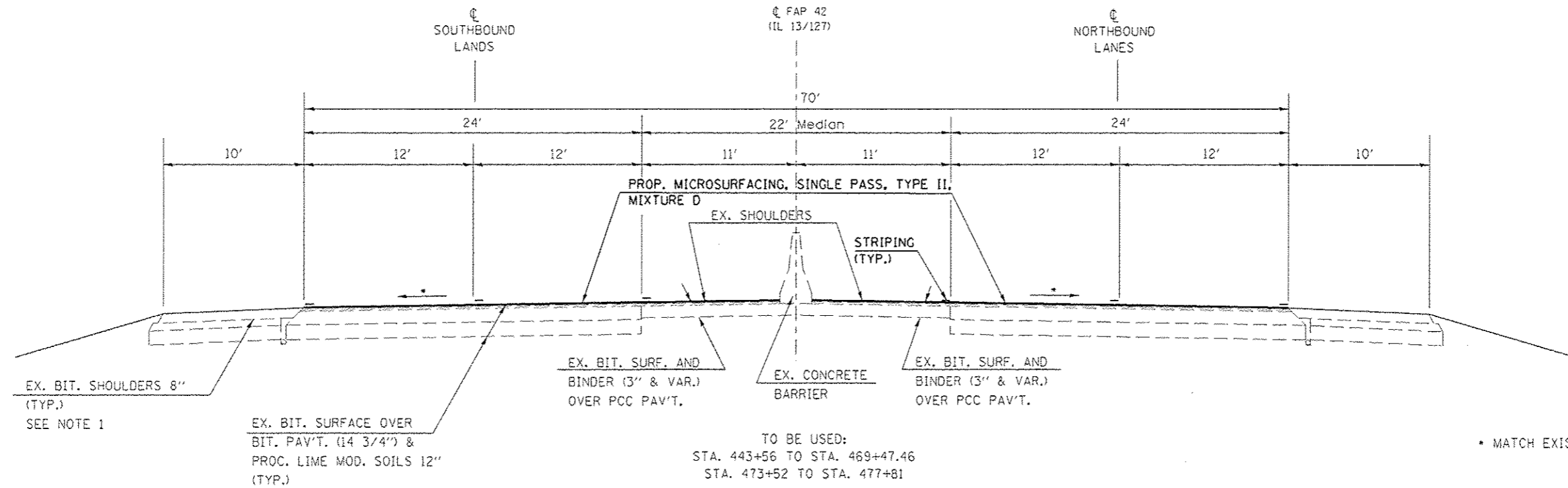
TYPICAL SECTION #3



NOTE 1:
 OUTSIDE SHOULDERS WILL NOT BE MICROSURFACED.
 NOTE 2: EXIST. CONCRETE MEDIAN IS ON LEFT SIDE OF ϕ AND LEFT TURN LANE IS ON RIGHT SIDE OF ϕ .

* MATCH EXISTING SLOPES

TYPICAL SECTION #4

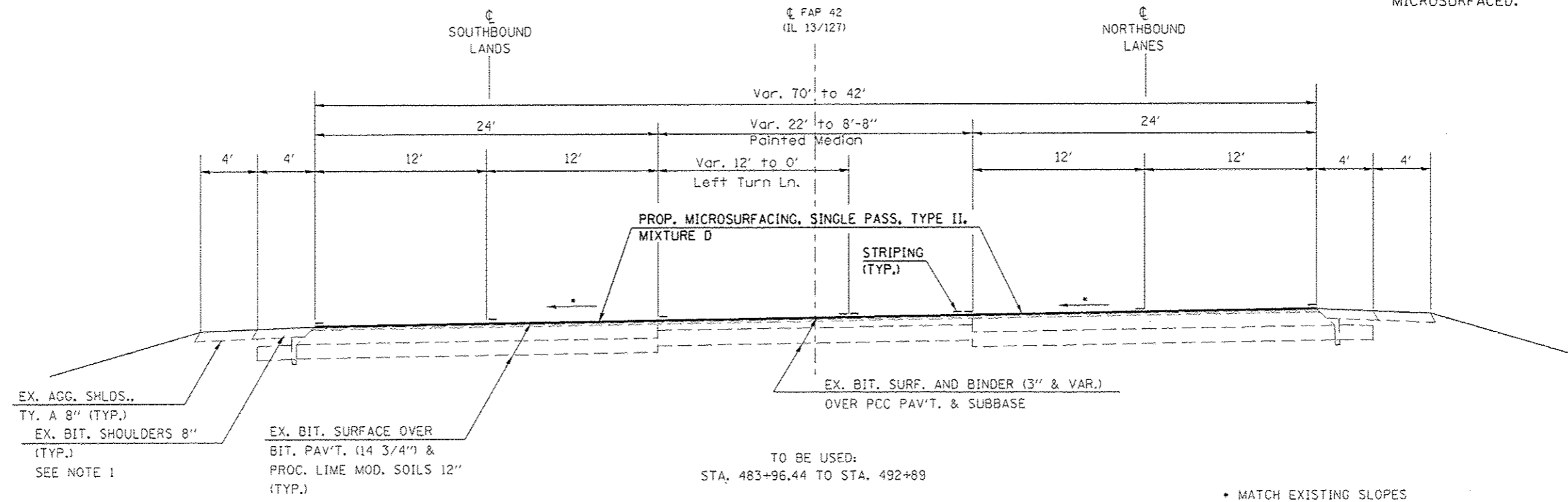


* MATCH EXISTING SLOPES

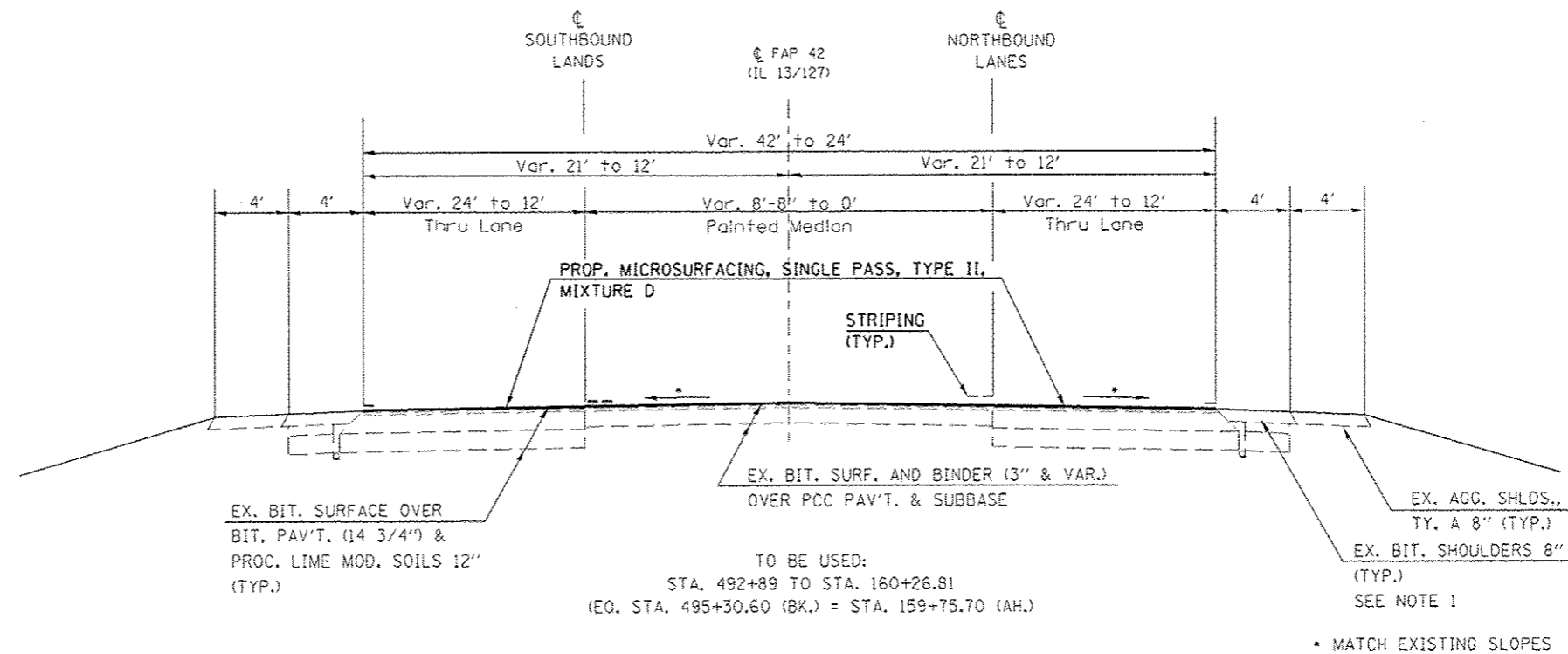
FILE NAME: c:\p\work\p\dot\mccord\k\483+2339\7836.sht USER NAME: mccordk PLOT SCALE: 1/8" = 1'-0" PLOT DATE: 12/4/2013				DESIGNED: - DRAWN: - CHECKED: - DATE: -				REVISED: - REVISED: - REVISED: - REVISED: -				STATE OF ILLINOIS DEPARTMENT OF TRANSPORTATION				TYPICAL SECTIONS 3 & 4				F.A.P. RTE. 42		SECTION 09 PAVT PRESERV 2014-1		COUNTY JACKSON/POPE		TOTAL SHEETS 23		SHEET NO. 6		CONTRACT NO. 78366	
SCALE: SHEET OF SHEETS STA. TO STA.												*FAP 42(IL 13/127) & FAP 885(IL 146)																			

TYPICAL SECTION #5

NOTE 1:
OUTSIDE SHOULDERS WILL NOT BE
MICROSURFACED.



TYPICAL SECTION #6

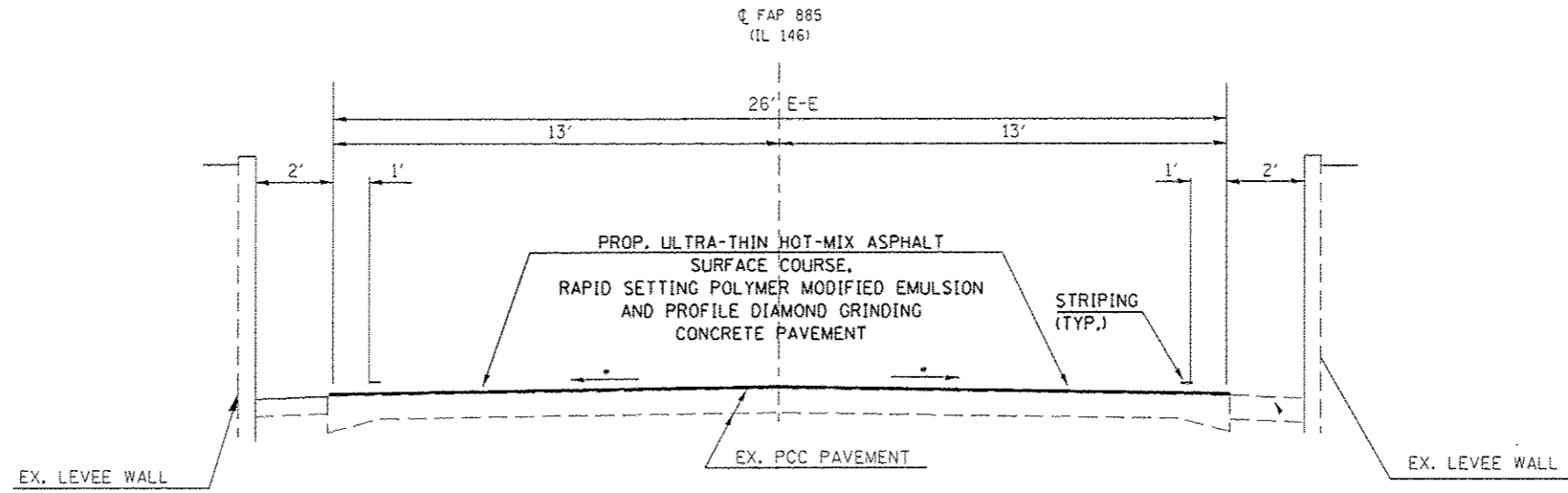


FILE NAME =	USER NAME = mcoordkr	DESIGNED -	REVISED -	STATE OF ILLINOIS DEPARTMENT OF TRANSPORTATION	TYPICAL SECTIONS 5 & 6			F.A.P. RTE.	SECTION	COUNTY	TOTAL SHEETS	SHEET NO.		
cr:\pwork\p\d01\mcoordkr\0342339\78	66-akt-pln.dgn	DRAWN -	REVISED -		SCALE:	SHEET	OF	SHEETS	STA.	TO STA.	D9 PAVT PRESERV 2014-1	JACKSON/POPE	23	7
Default	PLOT SCALE = 1/8" = 1' / 1"	CHECKED -	REVISED -											
	PLOT DATE = 12/4/2013	DATE -	REVISED -											

•FAP 42(IL 13/127) & FAP 885(IL 146)

ILLINOISIFIED AID PROJECT

**TYPICAL SECTION #7
LEVEE PAVEMENT ON IL 146**



TO BE USED:
 STA. 1261+70 TO STA. 1262+01 (WEST LEVEE)
 STA. 1664+59 TO STA. 1665+11 (NORTH LEVEE)

• MATCH EXISTING SLOPES

•FAP 42(IL 13/127) & FAP 885(IL 146)

FILE NAME = c:\pwork\pwsdot\macordn\0342339\78	USER NAME = macordn	DESIGNED -	REVISED -	STATE OF ILLINOIS DEPARTMENT OF TRANSPORTATION	TYPICALS FOR FAP 885 AT LEVEES IN GOLCONDA	F.A.P. RTE.	SECTION	COUNTY	TOTAL SHEETS	SHEET NO.
	06-shr-pln.dgn	DRAWN -	REVISED -			• D9 PAVT PRESERV 2014-1	JACKSON/POPE	23	8	
Default	PLOT SCALE = 100.0000' / in.	CHECKED -	REVISED -	SCALE:	SHEET OF SHEETS	STA. TO STA.	ILLINOIS FED. AID PROJECT CONTRACT NO. 78366			
	PLOT DATE = 12/4/2013	DATE -	REVISED -							

IL. 13/127 MICROSURFACING SCHEDULE

LOCATION - STATION TO STATION				LENGTH	PAVEMENT WIDTH	PAVEMENT AREA	MICRO-SURF., SINGLE PASS, TY. II, MIX. D CROSSOVERS AND TURN LANES				MICRO-SURF., SINGLE PASS, TY. II, MIX. D DRIVING LANES	BIT. MATLS. (PR. CT.)	FIBER-MOD. ASPHALT CR. SEAL (SEE NOTE 1)	NOTES
				FOR INFORMATIONAL PURPOSE ONLY			LEFT TURN LANE	MEDIAN CROSSOVER	RIGHT TURN LANE	MEDIAN SHOULDER				
				(FT)	(FT)	(SQ YD)	(SQ YD)	(SQ YD)	(SQ YD)	(SQ YD)	(SQ YD)	(GAL)	(FOOT)	
CL IL 13 NBL - Sta. 369+79 to Sta. 160+26.81														
	369+79	TO	410+50	4071	24.0	10856					10856	977	8,142	
	405+52	TO	410+00	448	12.0	444	444					40	448	AT INDUSTRIAL PARK DR.
	405+52	TO	410+00	448	12' & VAR.	531			531			48	448	VAR. WIDTH TURN LANE
	410+00	TO	411+00	100	22.0	245		245				22	100	INDUSTRIAL PARK DR.
	410+50	TO	437+48	2698	24.0	7194				7194		648	5,396	
	432+47	TO	437+08	461	12.0	460	460					42	461	AT HARRISON RD.
	437+08	TO	437+88	80	22.0	196		196				18	80	AT HARRISON RD.
	437+48	TO	483+96	4649	24.0	12397				12397		1116	9,298	
LT.	437+82	TO	483+23	4541	10.0	5046					5046	454	4,541	
	469+08	TO	469+88	80	22.0	196		196				18	80	AT PRIVATE DR. EAST
	478+01	TO	483+33	532	12.0	529	529					48	532	AT BR 13/KIMMEL BRIDGE RD.
	483+33	TO	484+45	112	22.0	274		274				25	112	AT BR 13/KIMMEL BRIDGE RD.
	483+96	TO	489+76	580	24.0	1546				1546		139	1,160	
	484+45	TO	489+77	532	16' & VAR.	771		771				70	532	PAINTED MEDIAN
	489+77	TO	495+31	554	22' & VAR.	677		677				61	554	PAINTED MEDIAN
	489+76	TO	495+31	554	18.0	1109				1109		100	555	LANE VAR. 24' TO 12'
Eq. Sta. 495+30.60 (bk.) = Sta. 159+75.70														
	159+76	TO	160+27	51	12.0	68				68		6	51	
Sub-Totals NBL IL 13/127				20,490	260	42,538	1433	2359	531	5046	33,170	3,832	32,490	
CL IL 13 SBL - Sta. 369+00 to Sta. 495+30.60														
	369+17	TO	410+50	4133	24.0	11,021				11021		992	8,266	
	369+17	TO	373+52	435	12.0	427	427					39	435	AT IL 149/6TH ST.
	410+50	TO	437+48	2698	24.0	7,194				7194		648	5,396	
	411+00	TO	416+00	500	12.0	478	478					43	500	AT INDUSTRIAL PARK DR.
	437+88	TO	443+42	554	12.0	559	559					51	554	AT HARRISON RD.
	437+48	TO	483+96	4649	24.0	12397				12397		1116	9,298	
RT.	438+06	TO	483+14	4508	10.0	5009			5009			451	4,508	
	469+88	TO	473+37	349	12.0	313	313					28	349	AT PRIVATE DR. EAST
	483+96	TO	489+76	580	24.0	1,546				1546		139	1,160	
	484+45	TO	489+77	532	12.0	529	529					48	532	AT BR 13/KIMMEL BRIDGE RD.
	489+76	TO	495+31	554	18.0	1,109				1109		100	555	LANE VAR. 24' TO 12'
Eq. Sta. 495+30.60 (bk.) = Sta. 159+75.70														
	159+76	TO	160+27	51	12.0	68				68		6	51	
Sub-Totals SBL IL 13/127				19,543	196	40,650	2306	0	0	5009	33,335	3,661	31,604	
TOTALS EASTBOUND LANES									83,188			7,493	64,094	

Note 1: Fiber-Modified Asphalt Crack Seal is calculated using 1 lb. of material per 2.8 lineal foot. Use 1 strip each for each lane, crossover and turn lane on IL 13/127 through the length of the project, unless otherwise noted on plans.

*FAP 42(IL 13/127) & FAP 885(IL 146)

PAVEMENT MARKING SCHEDULE
FAP 42 (IL 13/127)

STATION TO STATION				THERMOPLASTIC PAVEMENT MARKING						TEMPORARY				NOTES
				4 INCH WHITE	4 INCH YELLOW	4 INCH (SKIP-DASH YELLOW)	12 INCH (DIAGONALS)	24 INCH (STOP BARS)	LETTERS & SYMBOLS	4 INCH	12 INCH	24 INCH	LETTERS & SYMBOLS	
				FOOT	FOOT	FOOT	FOOT	FOOT	SQ FT	FOOT	FOOT	FOOT	SQ FT	
CL FAP 42 MEDIAN - Sta. 369+79 to Sta. 495+30.60														
R+	369+79.0	To	410+00.0	4,021.0		1,005					5,026			
R+	370+05.0	To	410+00.0		3,995						3,995			
L+	369+03.0							12				12		
L+	369+17.0	To	410+00.0		4,083	1,021					5,104			
L+	369+17.0	To	409+07.0	3,990							3,990			
L+	370+45.0								15.6			15.6		Left Turn Arrow
L+	371+03.0								20.8			20.8		"ONLY"
R+	407+92.0								20.8			20.8		"ONLY"
R+	408+50.0								15.6			15.6		Left Turn Arrow
R+	407+92.0								20.8			20.8		"ONLY"
R+	408+50.0								15.6			15.6		Right Turn Arrow
R+	410+03.0							12				12		
R+	410+22.0							24				24		
Industrial Park Dr. Intersection - Sta. 410+49.76														
L+	410+80.0							44				44		
R+	412+00.0	To	436+88.0	2,488						2,488				
L+	411+00.0							12				12		
L+	412+41.0								15.6			15.6		Left Turn Arrow
L+	412+99.0								20.8			20.8		"ONLY"
R+	411+00.0	To	437+08.0		2,608					2,608				
R+	411+00.0	To	495+30.6			2,108				2,108				
L+	411+00.0	To	437+08.0		2,608					2,608				
L+	411+00.0	To	495+30.6			2,108				2,108				
L+	411+70.0	To	436+65.0	2,495						2,495				
R+	434+89.0								20.8			20.8		"ONLY"
R+	435+47.0								15.6			15.6		Left Turn Arrow
R+	436+36.0								20.8			20.8		"ONLY"
R+	436+94.0								15.6			15.6		Left Turn Arrow
Harrison Rd. Intersection - Sta. 437+47.55														
R+	438+30.0	To	469+08.0	3,078						3,078				
R+	469+88.0	To	482+78.0	1,290						1,290				
R+	437+88.0	To	469+08.0		3,120					3,120				
R+	469+88.0	To	483+33.0		1,345					1,345				
L+	437+68.0								15.6			15.6		Left Turn Arrow
L+	438+26.0								20.8			20.8		"ONLY"
L+	439+96.0								15.6			15.6		Left Turn Arrow
L+	440+54.0								20.8			20.8		"ONLY"
L+	437+88.0	To	469+08.0		3,120					3,120				

•FAP 42(IL 13/127) & FAP 885(IL 146)

CONTRACT NO. 78366

PAVEMENT MARKING SCHEDULE (CONT.)

FAP 42 (IL 13/127)

STATION TO STATION				THERMOPLASTIC PAVEMENT MARKING						TEMPORARY				NOTES
				4 INCH WHITE	4 INCH YELLOW	4 INCH (SKIP-DASH YELLOW)	12 INCH (DIAGONALS)	24 INCH (STOP BARS)	LETTERS & SYMBOLS	4 INCH	12 INCH	24 INCH	LETTERS & SYMBOLS	
				FOOT	FOOT	FOOT	FOOT	FOOT	SQ FT	FOOT	FOOT	FOOT	SQ FT	
Private Dr. Ent. - Sta. 469+47.46														
L+	469+88.0	To	483+33.0		1,345						1,345			
L+	438+10.0	To	482+75.0	4,465							4,465			
L+	470+31.0								15.6			15.6		Left Turn Arrow
L+	470+89.0								20.8			20.8		"ONLY"
R+	480+82.0								20.8			20.8		"ONLY"
R+	481+40.0								15.6			15.6		Left Turn Arrow
R+	482+38.0								20.8			20.8		"ONLY"
R+	482+96.0								15.6			15.6		Left Turn Arrow
B.R. 13/Kimmel Bridge Rd. - Sta. 483+96.44														
R+	484+45.0	To	495+30.6	1,086							1,086			
R+	484+45.0	To	495+30.6		1,086						1,086			
L+	484+60.0								15.6			15.6		Left Turn Arrow
L+	485+18.0								20.8			20.8		"ONLY"
L+	486+30.0								15.6			15.6		Left Turn Arrow
L+	486+88.0								20.8			20.8		"ONLY"
L+	484+45.0	To	495+30.6		1,086						1,086			
L+	485+40.0	To	495+30.6	991							991			
R+	487+00.0								41.5			41.5		Drop Lane Arrow
R+	489+00.0								41.5			41.5		Drop Lane Arrow
Eq. Sta. 495+30.60 (bk.) = Sta. 159+75.70														
R+	159+75.7	To	160+26.0	50		13					63			
R+	159+75.7	To	160+26.0		50						50			
L+	159+75.7	To	160+26.0		50						50			
L+	159+75.7	To	160+26.0	50		13					63			
Turn Lanes														
L+	369+03.0	To	371+21.0	218							218			Left Turn Lane
R+	407+82.0	To	410+22.0	240							240			Left Turn Lane
R+	407+82.0	To	409+80.0	198							198			Right Turn Lane
R+	409+80.0	To	410+35.0	169							169			Painted Island
L+	410+80.0	To	413+17.0	237							237			Left Turn Lane
R+	434+79.0	To	437+08.0	229							229			Left Turn Lane
L+	437+88.0	To	440+72.0	284							284			Left Turn Lane
L+	469+88.0	To	471+07.0	119							119			
R+	480+72.0	To	483+33.0	261							261			
L+	484+45.0	To	487+06.0	261							261			
R+	484+45.0	To	495+30.6				540				540			
R+	159+75.7	To	160+26.0				5				5			
Sub-Totals FAP 42				26,220	24,496	6,268	545	104	556.2	56,984	545	104	556.2	
TOTALS				56,984			545	104	556.2	56,984	545	104	556.2	

*FAP 42(IL 13/127) & FAP 885(IL 146)

FILE NAME =	USER NAME = mccordkr	DESIGNED -	REVISED -
ei:\pw_work\p\dot\mccordkr\0342339\78366-sh1-pln.dgn		DRAWN -	REVISED -
Default	PLOT SCALE = 100.0000' / in.	CHECKED -	REVISED -
	PLOT DATE = 12/4/2013	DATE -	REVISED -

STATE OF ILLINOIS
DEPARTMENT OF TRANSPORTATION

PAVEMENT MARKING SCHEDULE
(CONTINUED)

SCALE: SHEET OF SHEETS STA. TO STA.

F.A.P. RTE.	SECTION	COUNTY	TOTAL SHEETS	SHEET NO.
*	D9 PAVT PRESERV 2014-1	JACKSON/POPE	23	11
			CONTRACT NO. 78366	
ILLINOIS FED. AID PROJECT				

RESURFACING SCHEDULE
FAP 885 (IL 146)

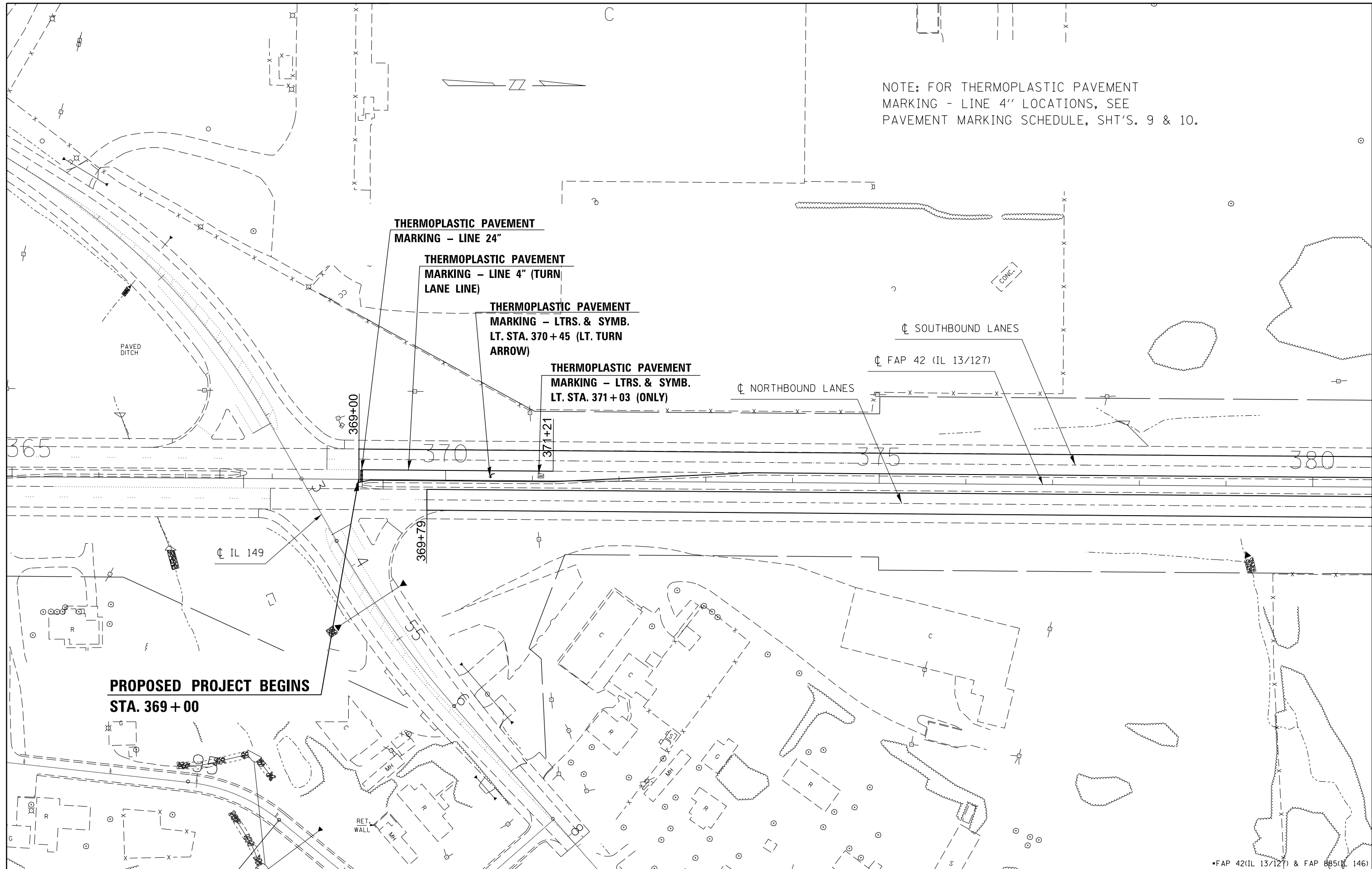
ULTRA-THIN HMA SURFACE COURSE SCHEDULE

LOCATION - STATION TO STATION	LENGTH	PAVEMENT WIDTH	PAVEMENT AREA	RAPID SETTING POLY. MOD. EMULSION	ULTRA-THIN HMA SURF. CSE.	PROF. DIAMOND GRINDING CONC. PAVT.
	FOR INFORMATIONAL PURPOSE ONLY					
	(FT)	(FT)	(SQ YD)	(GALS)	(SQ YD)	(SQ YD)
CL IL 146 (WEST LEVEE)						
1261+70 TO 1262+01	31	26.0	90	8	90	90
CL IL 146 (NORTH LEVEE)						
1664+59 TO 1665+11	52	26.0	150	14	150	150
TOTAL FAP 885 (IL 146)	83		240	22	240	240

PAVEMENT MARKING SCHEDULE
FAP 885 (IL 146)

STATION TO STATION	THPL PAVEMENT MARKING			TEMPORARY	NOTES
	4 INCH WHITE (EDGELINE)	4 INCH YELLOW (NPZ)	4 INCH (SKIP-DASH YELLOW)	4 INCH	
	FOOT	FOOT	FOOT	FOOT	
CL FAP 885 (IL 146) - WEST LEVEE					
R+ 1261+70.0 To 1262+01.0	31		8	39	
L+ 1261+70.0 To 1262+01.0	31	31		62	
CL FAP 885 (IL 146) - NORTH LEVEE					
R+ 1664+59.0 To 1665+11.0	52		13	65	
L+ 1664+59.0 To 1665+11.0	52	52		104	
TOTAL FAP 885 (IL 146)		270		270	

NOTE: FOR THERMOPLASTIC PAVEMENT MARKING - LINE 4" LOCATIONS, SEE PAVEMENT MARKING SCHEDULE, SHT'S. 9 & 10.



**PROPOSED PROJECT BEGINS
STA. 369+00**

•FAP 42(IL 13/127) & FAP 885(IL 146)

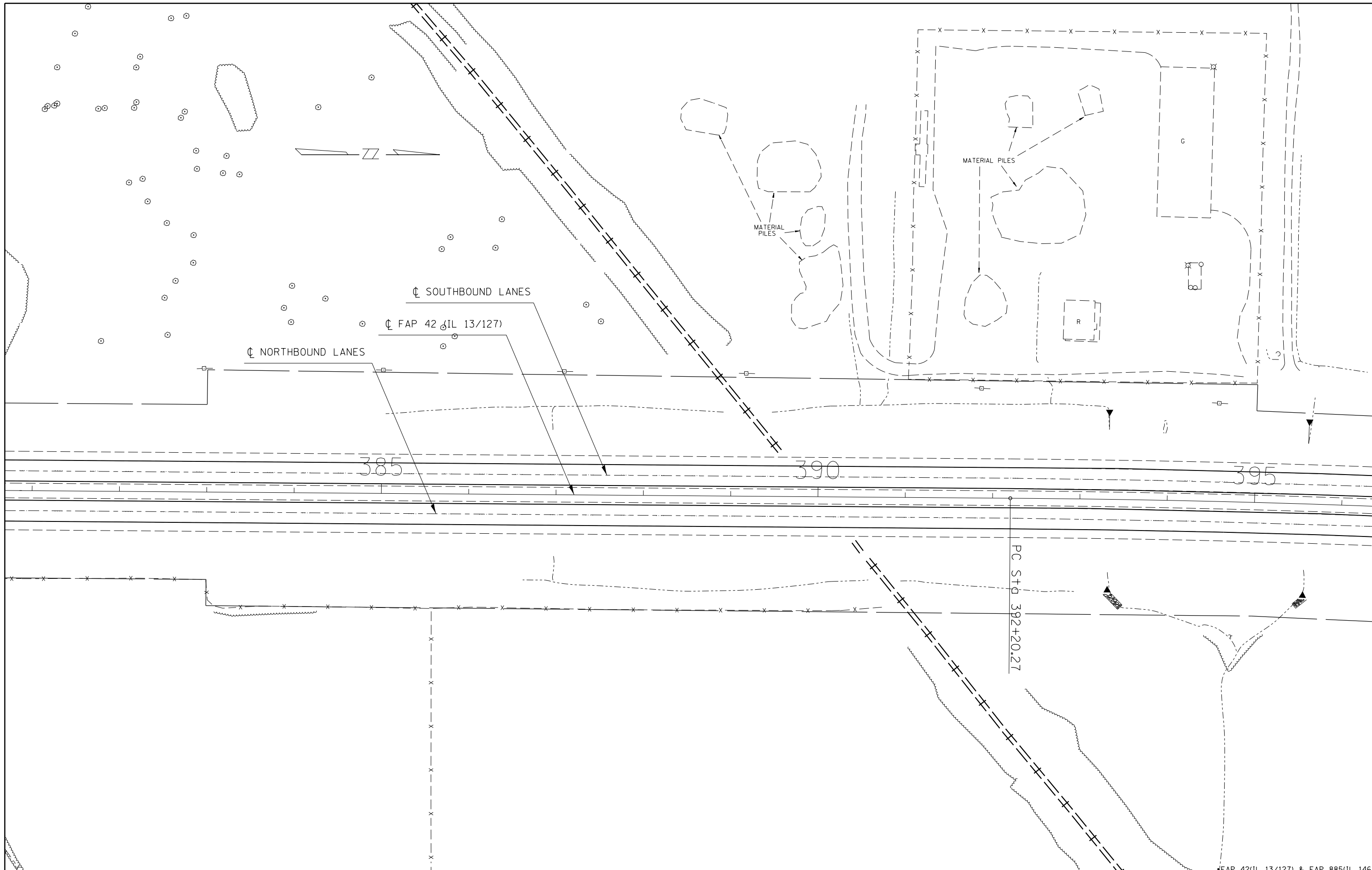
FILE NAME =	USER NAME = mccordkr	DESIGNED -	REVISED -
ei:\pw\work\p\midot\mccordkr\ad0342339\78366-sh1.pln.dgn		DRAWN -	REVISED -
Default		CHECKED -	REVISED -
	PLOT SCALE = 100.0000' / in.	DATE -	REVISED -
	PLOT DATE = 12/4/2013		

**STATE OF ILLINOIS
DEPARTMENT OF TRANSPORTATION**

PLAN SHEET 1

SCALE: SHEET OF SHEETS STA. TO STA.

F.A.P. RTE.	SECTION	COUNTY	TOTAL SHEETS	SHEET NO.
• D9 PAVT PRESERV 2014-1		JACKSON/POPE	23	13
			CONTRACT NO. 78366	
ILLINOIS FED. AID PROJECT				



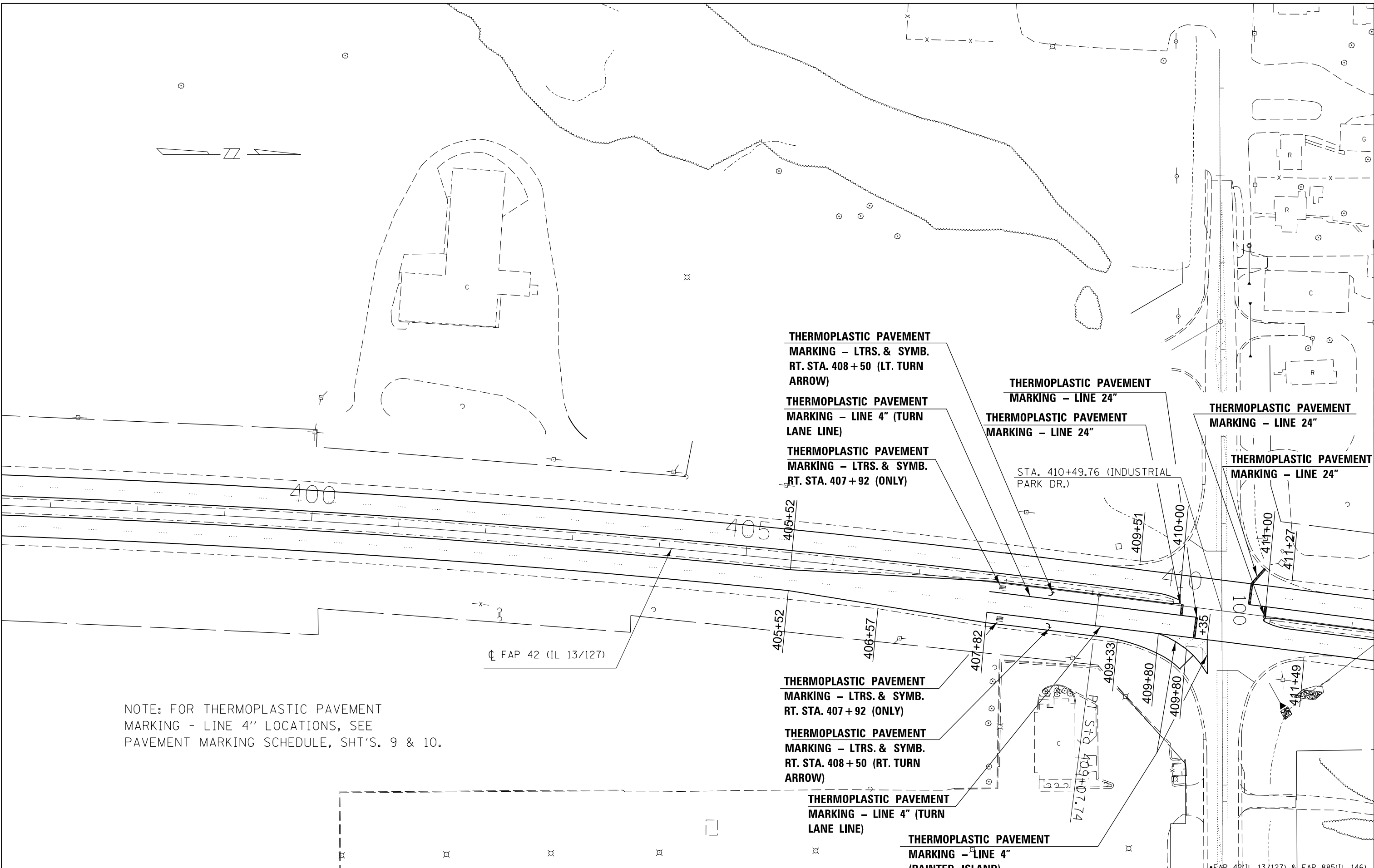
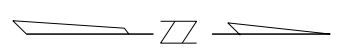
FILE NAME =	USER NAME = mccordkr	DESIGNED -	REVISED -
c:\pw\work\p\dot\mccordkr\ad0342339\78366-sh1.pln.dgn		DRAWN -	REVISED -
Default		CHECKED -	REVISED -
	PLOT SCALE = 100.0000' / in.	DATE -	REVISED -
	PLOT DATE = 12/4/2013		

**STATE OF ILLINOIS
DEPARTMENT OF TRANSPORTATION**

PLAN SHEET 2			
SCALE:	SHEET	OF	SHEETS
	STA.	TO	STA.

F.A.P. RTE.	SECTION	COUNTY	TOTAL SHEETS	SHEET NO.
D9 PAVT PRESERV 2014-1	JACKSON/POPE		23	14
CONTRACT NO. 78366				
ILLINOIS FED. AID PROJECT				

FAP 42(IL 13/127) & FAP 885(IL 146)



THERMOPLASTIC PAVEMENT MARKING - LTRS. & SYMB. RT. STA. 408 + 50 (LT. TURN ARROW)

THERMOPLASTIC PAVEMENT MARKING - LINE 4" (TURN LANE LINE)

THERMOPLASTIC PAVEMENT MARKING - LTRS. & SYMB. RT. STA. 407 + 92 (ONLY)

THERMOPLASTIC PAVEMENT MARKING - LINE 24"
THERMOPLASTIC PAVEMENT MARKING - LINE 24"

THERMOPLASTIC PAVEMENT MARKING - LINE 24"

THERMOPLASTIC PAVEMENT MARKING - LINE 24"

STA. 410+49.76 (INDUSTRIAL PARK DR.)

CL FAP 42 (IL 13/127)

THERMOPLASTIC PAVEMENT MARKING - LTRS. & SYMB. RT. STA. 407 + 92 (ONLY)

THERMOPLASTIC PAVEMENT MARKING - LTRS. & SYMB. RT. STA. 408 + 50 (RT. TURN ARROW)

THERMOPLASTIC PAVEMENT MARKING - LINE 4" (TURN LANE LINE)

THERMOPLASTIC PAVEMENT MARKING - LINE 4" (PAINTED ISLAND)

NOTE: FOR THERMOPLASTIC PAVEMENT MARKING - LINE 4" LOCATIONS, SEE PAVEMENT MARKING SCHEDULE, SHT'S. 9 & 10.

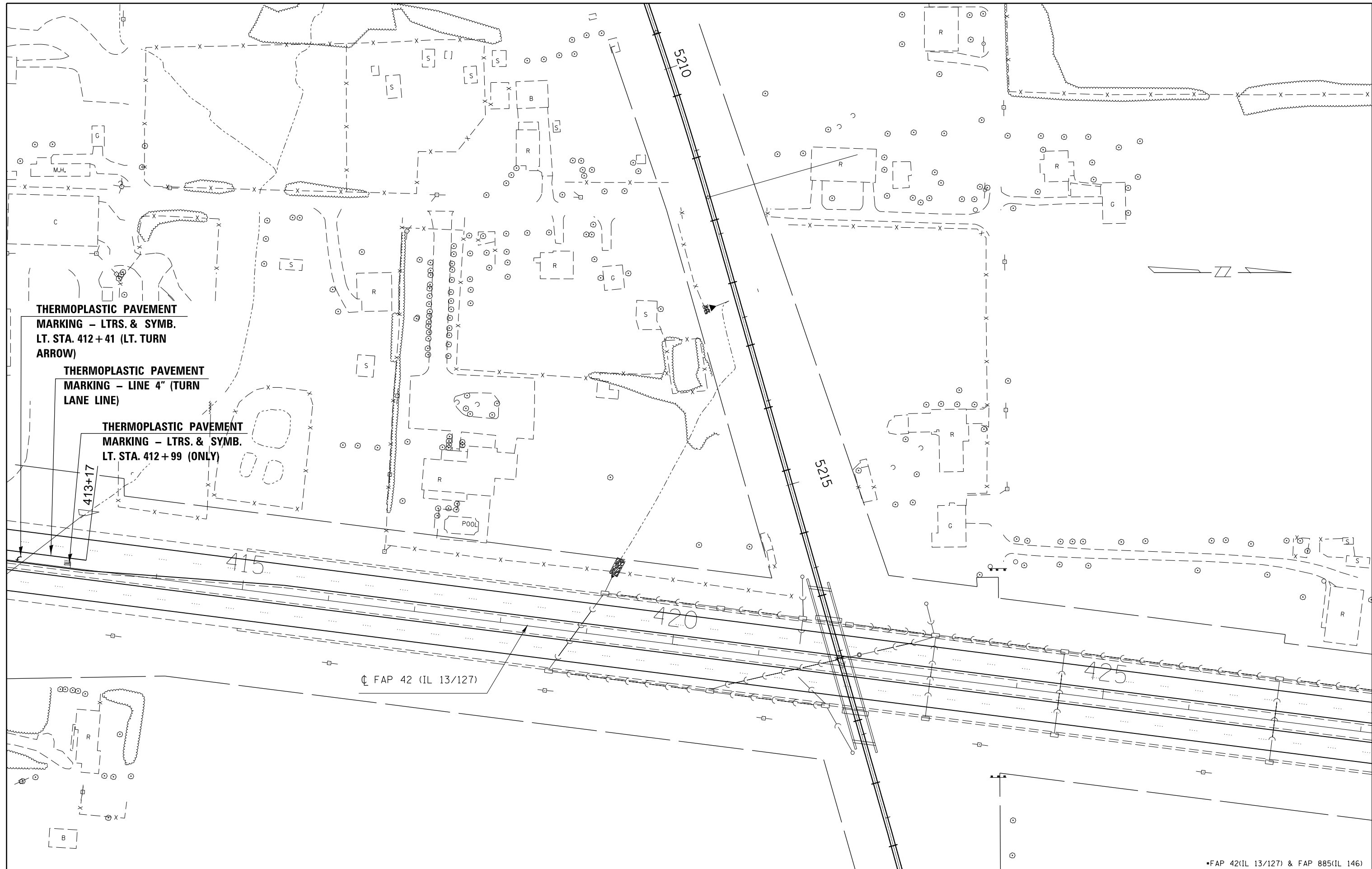
• FAP 42 (IL 13/127) & FAP 885 (IL 146)

FILE NAME =	USER NAME = mccordkr	DESIGNED -	REVISED -
et:\pw\work\p\dot\mccordkr\0342339\78366-sht-pln.dgn		DRAWN -	REVISED -
Default	PLOT SCALE = 100.0000' / in.	CHECKED -	REVISED -
	PLOT DATE = 12/4/2013	DATE -	REVISED -

**STATE OF ILLINOIS
DEPARTMENT OF TRANSPORTATION**

PLAN SHEET 3			
SCALE:	SHEET	OF	SHEETS
	STA.	TO	STA.

F.A.P. RTE.	SECTION	COUNTY	TOTAL SHEETS	SHEET NO.
D9 PAVT PRESERV 2014-1	JACKSON/POPE		23	15
CONTRACT NO. 78366				
ILLINOIS FED. AID PROJECT				



THERMOPLASTIC PAVEMENT MARKING - LTRS. & SYMB.
LT. STA. 412+41 (LT. TURN ARROW)

THERMOPLASTIC PAVEMENT MARKING - LINE 4" (TURN LANE LINE)

THERMOPLASTIC PAVEMENT MARKING - LTRS. & SYMB.
LT. STA. 412+99 (ONLY)

413+17

415

420

425

⊕ FAP 42 (IL 13/127)



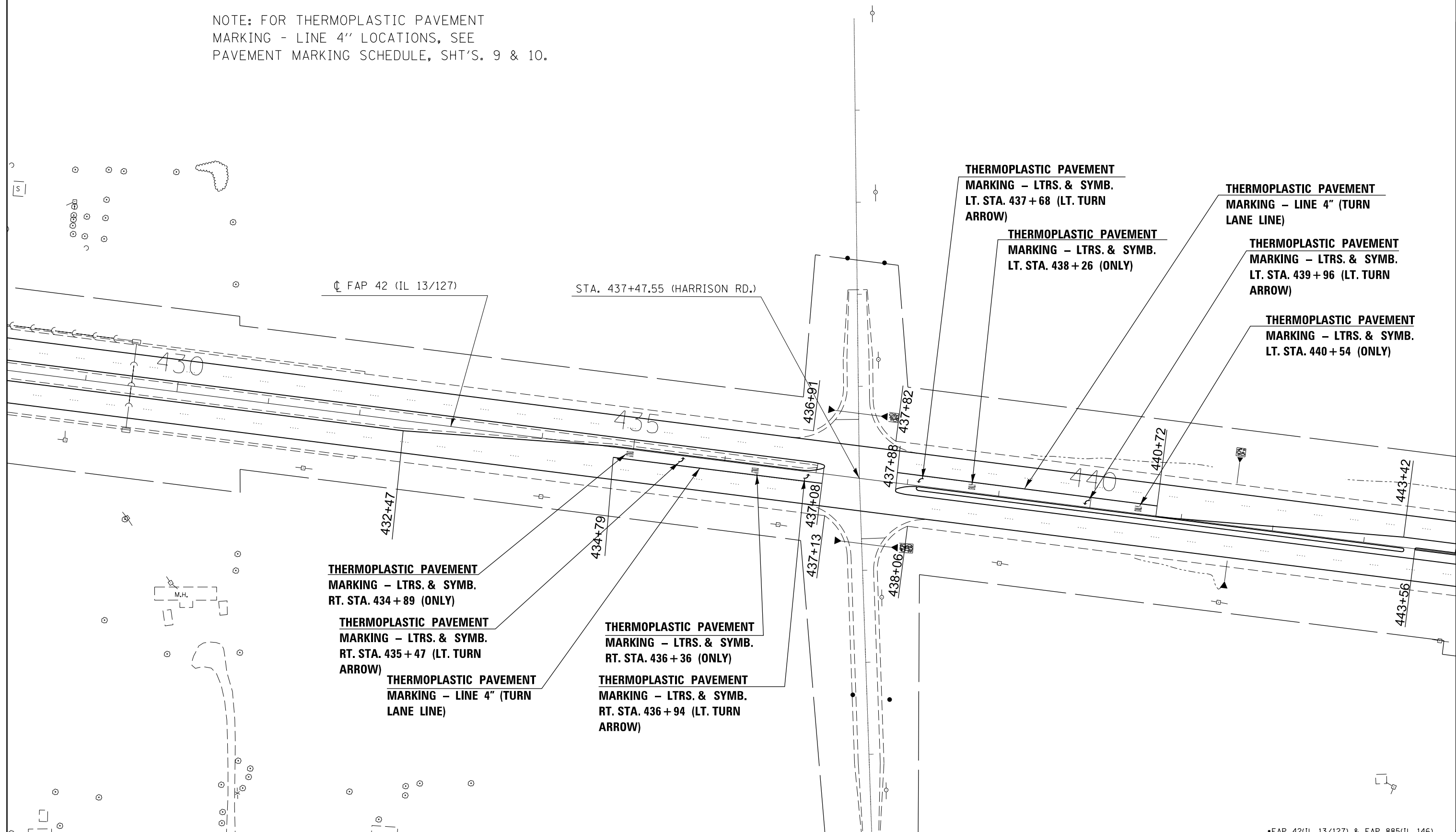
FILE NAME =	USER NAME = mccordkr	DESIGNED -	REVISED -
c:\pwwork\pwwork\mccordkr\d0342339\78366-sh1.pln.dgn		DRAWN -	REVISED -
Default		CHECKED -	REVISED -
	PLOT SCALE = 100.0000' / in.	DATE -	REVISED -
	PLOT DATE = 12/4/2013		

**STATE OF ILLINOIS
DEPARTMENT OF TRANSPORTATION**

PLAN SHEET 4				
SCALE:	SHEET	OF	SHEETS	STA. TO STA.

*FAP 42(IL 13/127) & FAP 885(IL 146)				
F.A.P. RTE.	SECTION	COUNTY	TOTAL SHEETS	SHEET NO.
D9 PAVT PRESERV 2014-1	JACKSON/POPE		23	16
CONTRACT NO. 78366				
ILLINOIS FED. AID PROJECT				

NOTE: FOR THERMOPLASTIC PAVEMENT MARKING - LINE 4" LOCATIONS, SEE PAVEMENT MARKING SCHEDULE, SHT'S. 9 & 10.



THERMOPLASTIC PAVEMENT MARKING - LTRS. & SYMB. RT. STA. 434 + 89 (ONLY)

THERMOPLASTIC PAVEMENT MARKING - LTRS. & SYMB. RT. STA. 435 + 47 (LT. TURN ARROW)

THERMOPLASTIC PAVEMENT MARKING - LINE 4" (TURN LANE LINE)

THERMOPLASTIC PAVEMENT MARKING - LTRS. & SYMB. RT. STA. 436 + 36 (ONLY)

THERMOPLASTIC PAVEMENT MARKING - LTRS. & SYMB. RT. STA. 436 + 94 (LT. TURN ARROW)

THERMOPLASTIC PAVEMENT MARKING - LTRS. & SYMB. LT. STA. 437 + 68 (LT. TURN ARROW)

THERMOPLASTIC PAVEMENT MARKING - LTRS. & SYMB. LT. STA. 438 + 26 (ONLY)

THERMOPLASTIC PAVEMENT MARKING - LINE 4" (TURN LANE LINE)

THERMOPLASTIC PAVEMENT MARKING - LTRS. & SYMB. LT. STA. 439 + 96 (LT. TURN ARROW)

THERMOPLASTIC PAVEMENT MARKING - LTRS. & SYMB. LT. STA. 440 + 54 (ONLY)

FILE NAME =	USER NAME = mccordkr	DESIGNED -	REVISED -
c:\pwork\pwork\dot\mccordkr\0342339\78366-sh1.pln.dgn		DRAWN -	REVISED -
Default	PLOT SCALE = 100.0000' / in.	CHECKED -	REVISED -
	PLOT DATE = 12/4/2013	DATE -	REVISED -

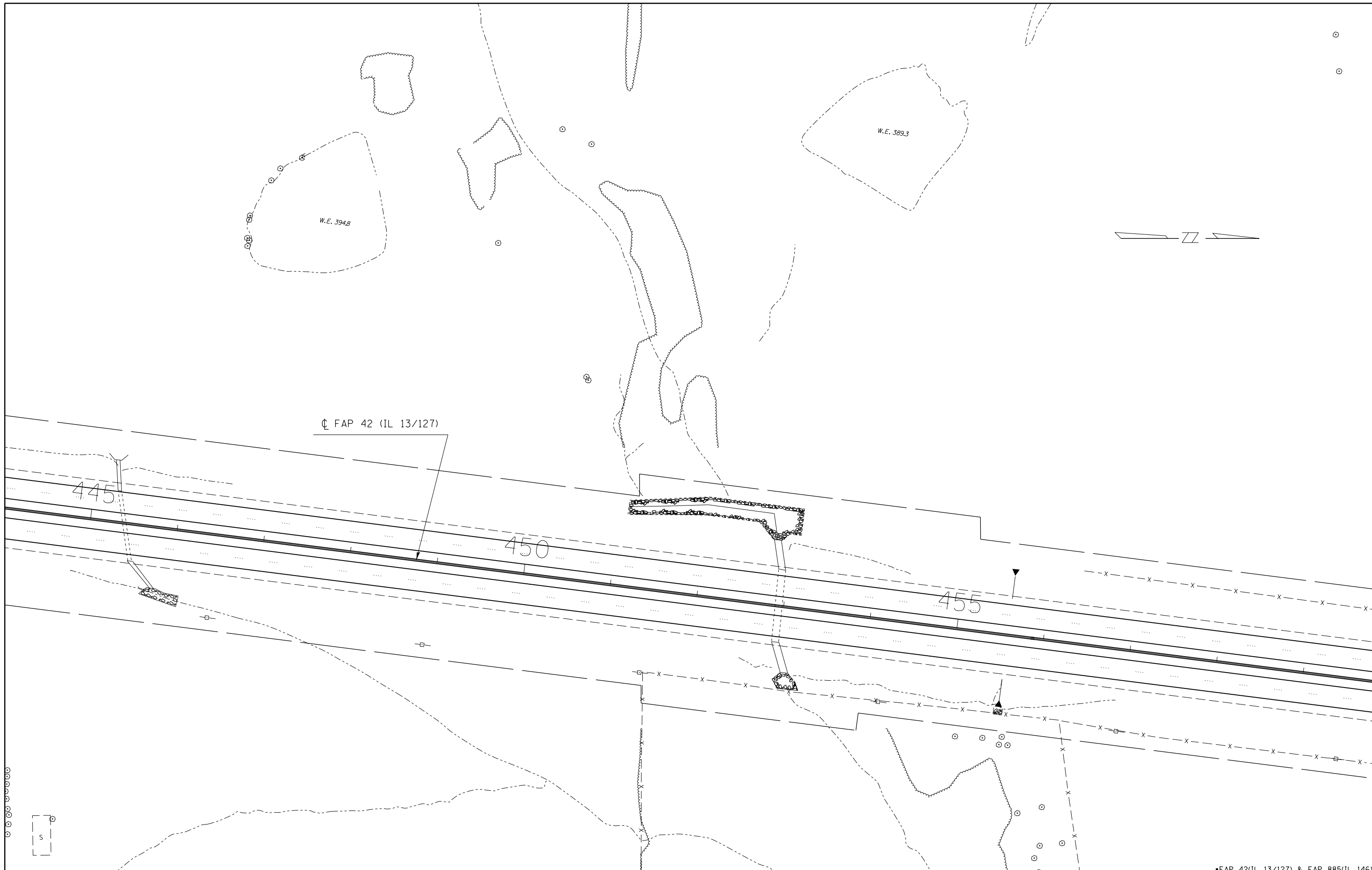
**STATE OF ILLINOIS
DEPARTMENT OF TRANSPORTATION**

PLAN SHEET 5

SCALE: SHEET OF SHEETS STA. TO STA.

F.A.P. RTE.	SECTION	COUNTY	TOTAL SHEETS	SHEET NO.
D9 PAVT PRESERV 2014-1	JACKSON/POPE		23	17
CONTRACT NO. 78366			ILLINOIS FED. AID PROJECT	

*FAP 42(IL 13/127) & FAP 885(IL 146)



FILE NAME =	USER NAME = mcoordkr	DESIGNED -	REVISED -
e:\p\work\p\midot\mcoordkr\ad0342339\78366-sh1.pln.dgn		DRAWN -	REVISED -
Default	PLOT SCALE = 100.0000' / in.	CHECKED -	REVISED -
	PLOT DATE = 12/4/2013	DATE -	REVISED -

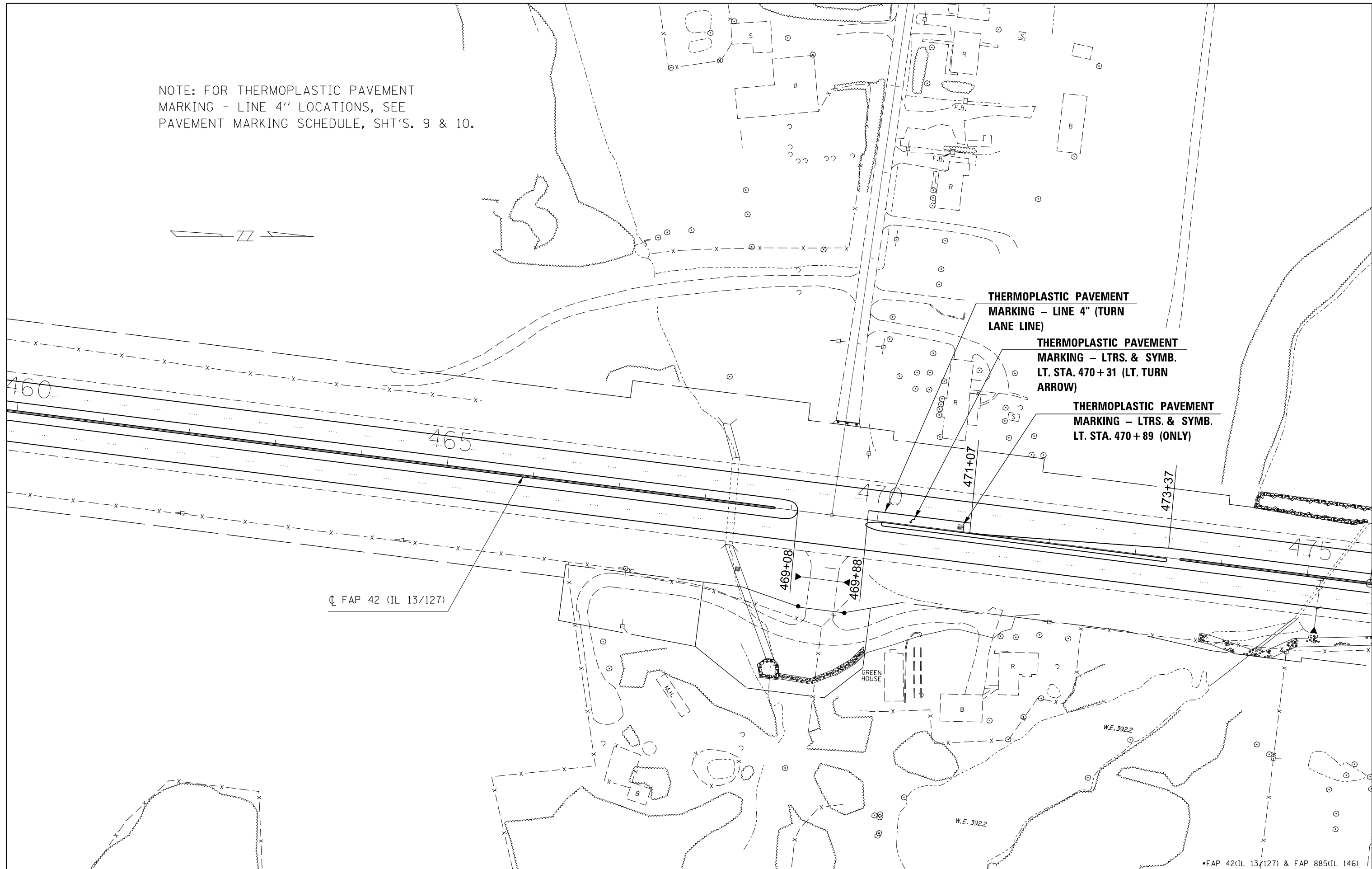
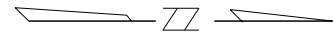
**STATE OF ILLINOIS
DEPARTMENT OF TRANSPORTATION**

PLAN SHEET 6			
SCALE:	SHEET	OF	SHEETS
	STA.		TO STA.

F.A.P. RTE.	SECTION	COUNTY	TOTAL SHEETS	SHEET NO.
D9 PAVT PRESERV 2014-1	JACKSON/POPE		23	18
CONTRACT NO. 78366				
ILLINOIS FED. AID PROJECT				

•FAP 42(IL 13/127) & FAP 885(IL 146)

NOTE: FOR THERMOPLASTIC PAVEMENT MARKING - LINE 4" LOCATIONS, SEE PAVEMENT MARKING SCHEDULE, SHT'S. 9 & 10.



THERMOPLASTIC PAVEMENT MARKING - LINE 4" (TURN LANE LINE)

THERMOPLASTIC PAVEMENT MARKING - LTRS. & SYMB. LT. STA. 470+31 (LT. TURN ARROW)

THERMOPLASTIC PAVEMENT MARKING - LTRS. & SYMB. LT. STA. 470+89 (ONLY)

FILE NAME =	USER NAME = mccordkr	DESIGNED -	REVISED -
et:\pw\work\p\dot\mccordkr\0342339\78366-sh1.pln.dgn		DRAWN -	REVISED -
Default	PLOT SCALE = 100.0000' / in.	CHECKED -	REVISED -
	PLOT DATE = 12/4/2013	DATE -	REVISED -

STATE OF ILLINOIS
DEPARTMENT OF TRANSPORTATION

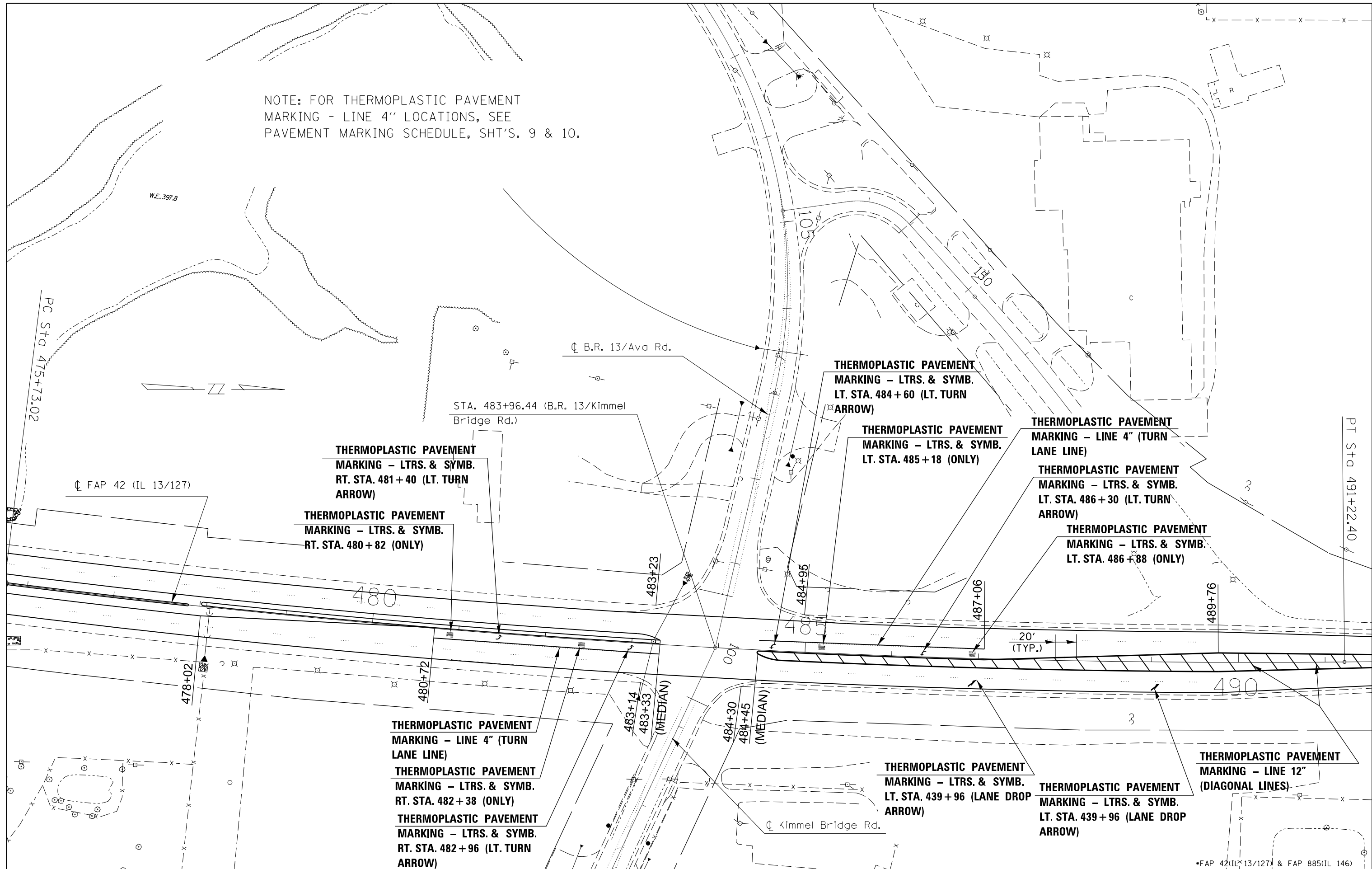
PLAN SHEET 7

SCALE: SHEET OF SHEETS STA. TO STA.

F.A.P. RTE.	SECTION	COUNTY	TOTAL SHEETS	SHEET NO.
D9 PAVT PRESERV 2014-1	JACKSON/POPE	23	19	
CONTRACT NO. 78366				
ILLINOIS FED. AID PROJECT				

*FAP 42(IL 13/127) & FAP 885(IL 146)

NOTE: FOR THERMOPLASTIC PAVEMENT MARKING - LINE 4" LOCATIONS, SEE PAVEMENT MARKING SCHEDULE, SHT'S. 9 & 10.



FILE NAME =	USER NAME = mccordkr	DESIGNED -	REVISED -
ei:\pwork\pwork\mccordkr\0342339\78366-sh1.pln.dgn		DRAWN -	REVISED -
Default		CHECKED -	REVISED -
	PLOT DATE = 12/4/2013	DATE -	REVISED -

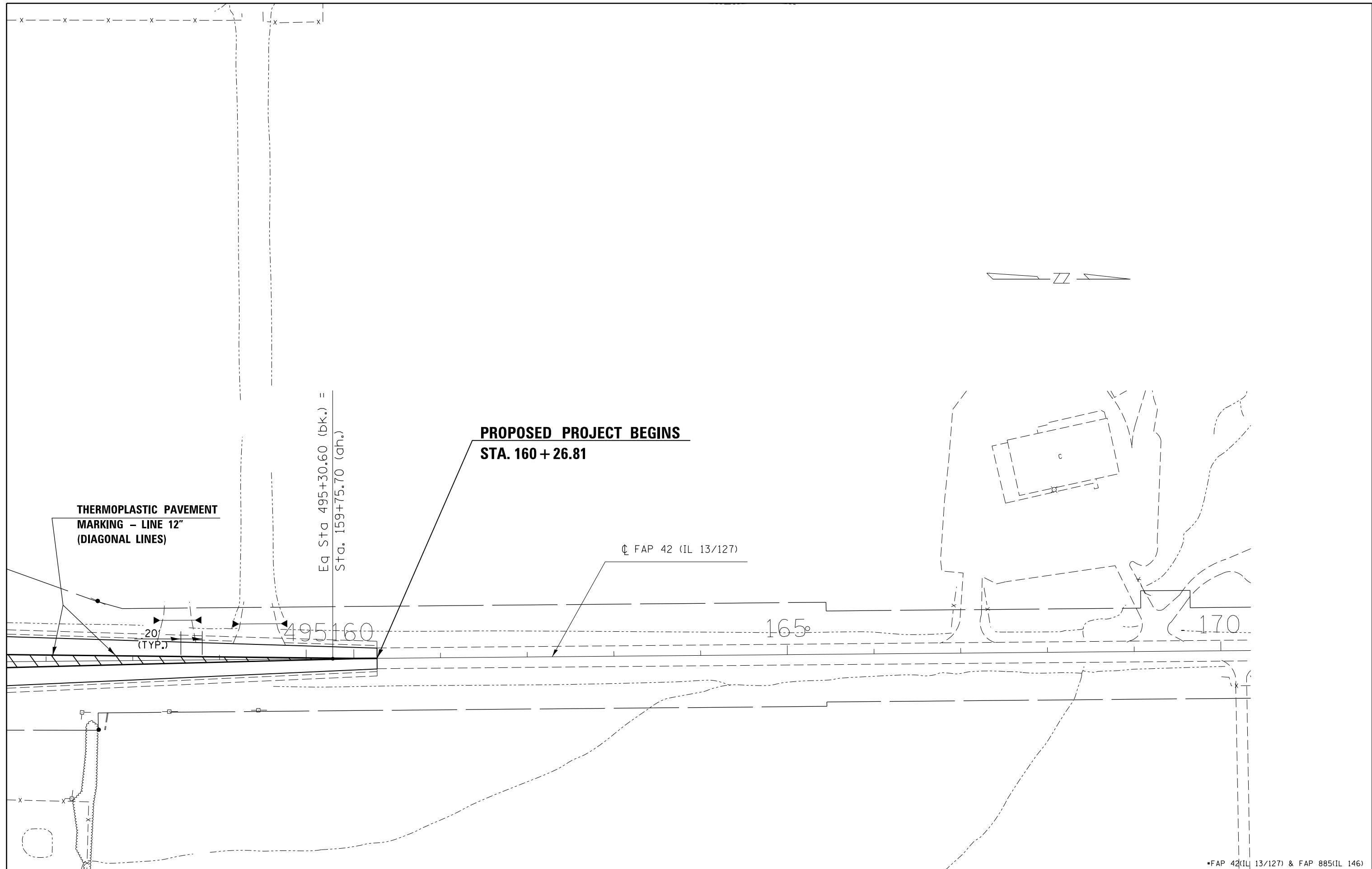
**STATE OF ILLINOIS
DEPARTMENT OF TRANSPORTATION**

PLAN SHEET 8

SCALE: SHEET OF SHEETS STA. TO STA.

F.A.P. RTE.	SECTION	COUNTY	TOTAL SHEETS	SHEET NO.
D9 PAVT PRESERV 2014-1		JACKSON/POPE	23	20
CONTRACT NO. 78366				
ILLINOIS FED. AID PROJECT				

*FAP 42(IL 13/127) & FAP 885(IL 146)



FILE NAME =	USER NAME = mcoordkr	DESIGNED -	REVISED -
Default	Default	DRAWN -	REVISED -
	PLOT SCALE = 100.0000' / in.	CHECKED -	REVISED -
	PLOT DATE = 12/4/2013	DATE -	REVISED -

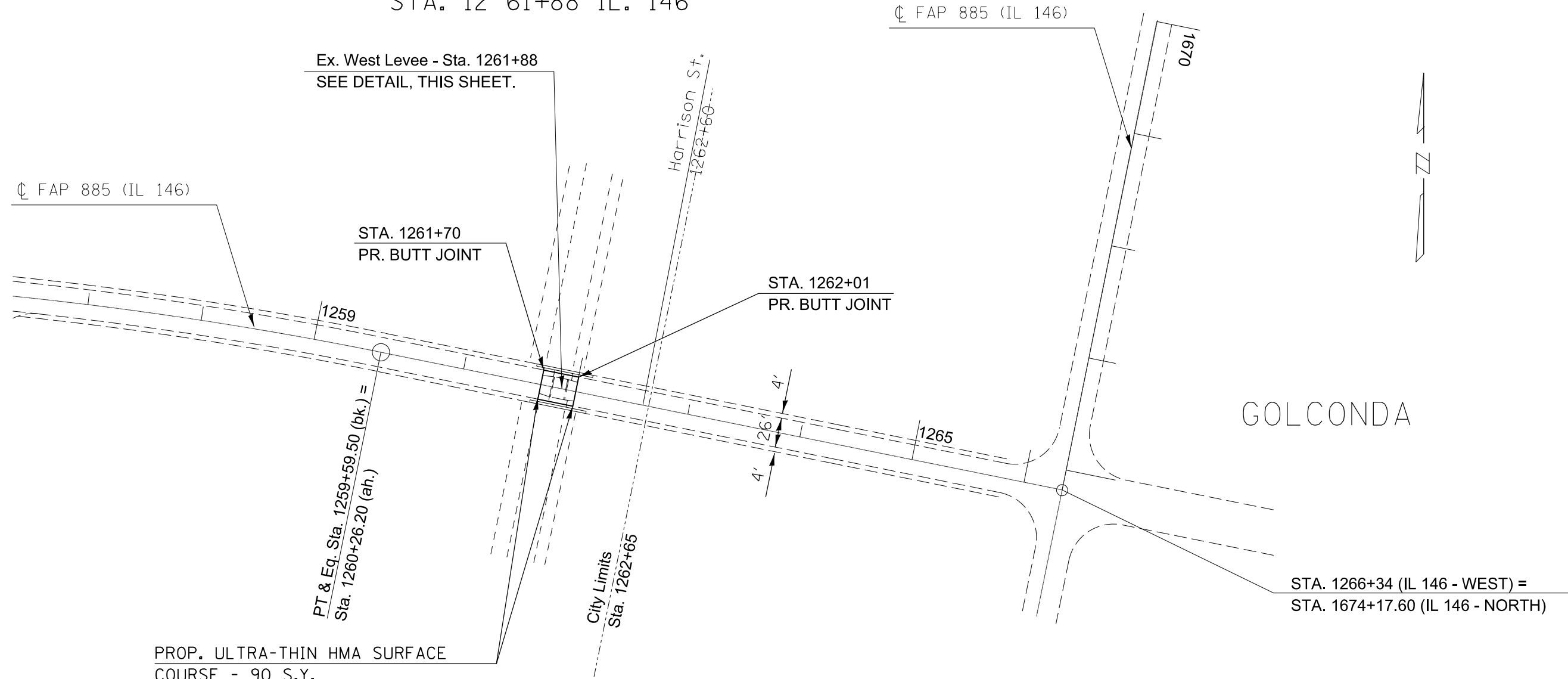
**STATE OF ILLINOIS
DEPARTMENT OF TRANSPORTATION**

PLAN SHEET 9			
SCALE:	SHEET	OF	SHEETS
	STA.	TO	STA.

F.A.P. RTE.	SECTION	COUNTY	TOTAL SHEETS	SHEET NO.
D9	PAVT PRESERV 2014-1	JACKSON/POPE	23	21
ILLINOIS FED. AID PROJECT			CONTRACT NO. 78366	

*FAP 42(IL 13/127) & FAP 885(IL 146)

WEST LEVEE LOCATION
STA. 12 61+88 IL. 146

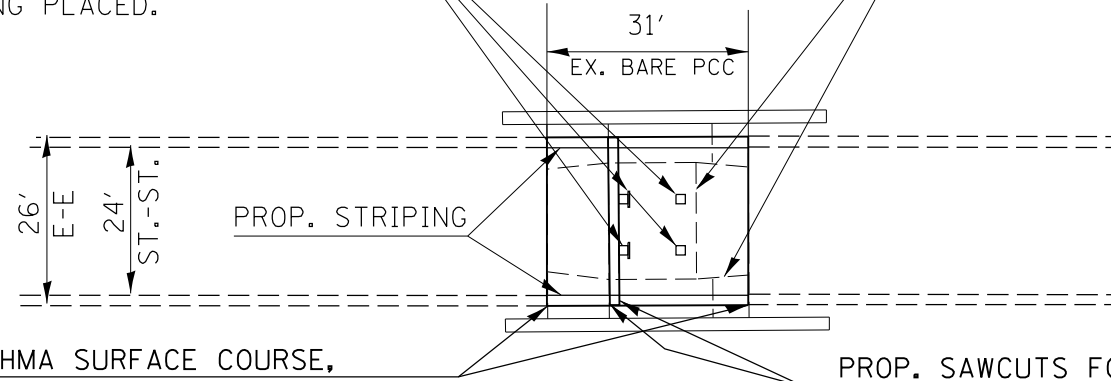


PROP. ULTRA-THIN HMA SURFACE COURSE - 90 S.Y.
 RAPID SETTING POLYMER MODIFIED EMULSION - 8 GALS.
 PROFILE DIAMOND GRINDING CONCRETE PAVEMENT - 90 S.Y.

EX. LEVEE HARDWARE TO BE PROTECTED WHILE SURFACE COURSE & EMULSION ARE BEING PLACED.

WEST LEVEE DETAIL

EX. JOINTS TO BE SEALED ACCORDING TO ULTRA-THIN HMA SURF. CSE. (SEE SPEC. PROV.)



PROP. ULTRA-THIN HMA SURFACE COURSE, RAPID SETTING POLYMER MODIFIED EMULSION AND PROFILE DIAMOND GRINDING CONC. PAV'T.

PROP. SAWCUTS FOR LEVEE GATE TRENCHES (SEE SPEC. PROVISIONS)

*FAP 42(IL 13/127) & FAP 885(IL 146)

FILE NAME =	USER NAME = mccordkr	DESIGNED -	REVISED -
et:\pw\work\p\dot\mccordkr\ad0342339\78366-sh.t-pln.dgn		DRAWN -	REVISED -
Default	PLOT SCALE = 100.0000' / in.	CHECKED -	REVISED -
	PLOT DATE = 12/4/2013	DATE -	REVISED -

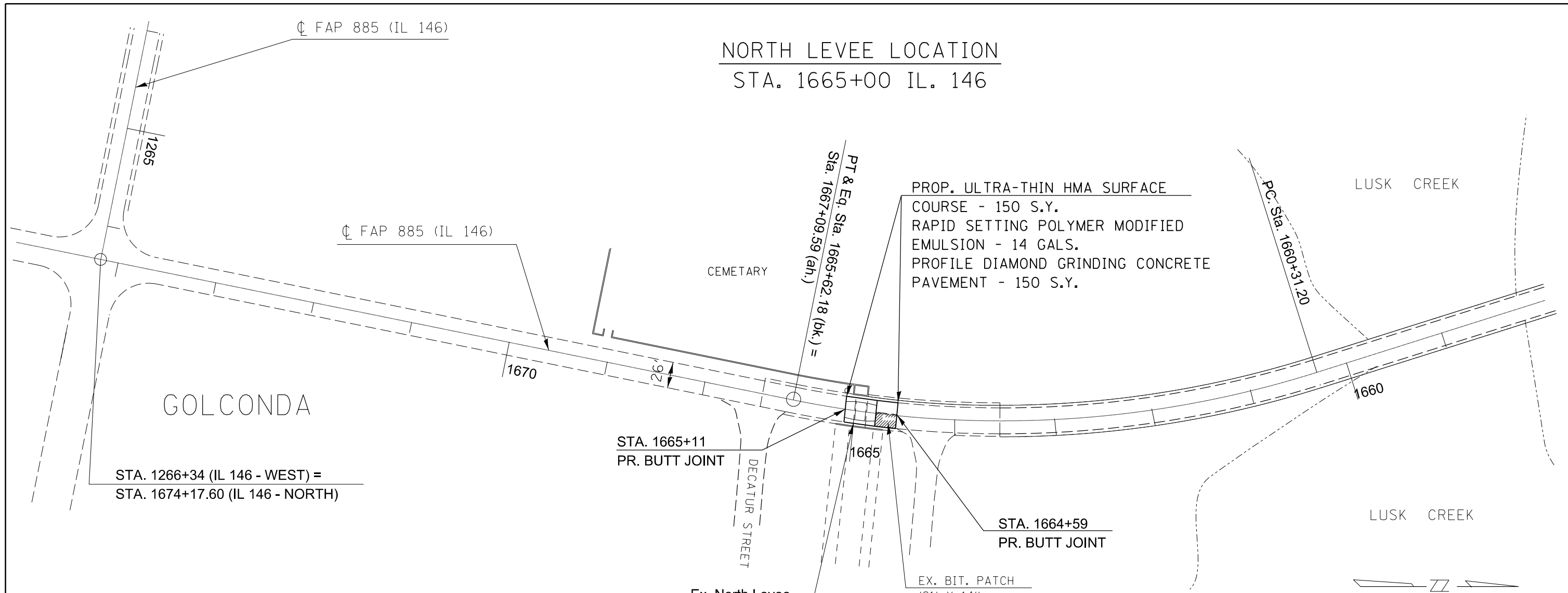
STATE OF ILLINOIS
DEPARTMENT OF TRANSPORTATION

WEST LEVEE DETAILS
ON FAP 885 (IL 146)

SCALE: SHEET OF SHEETS STA. TO STA.

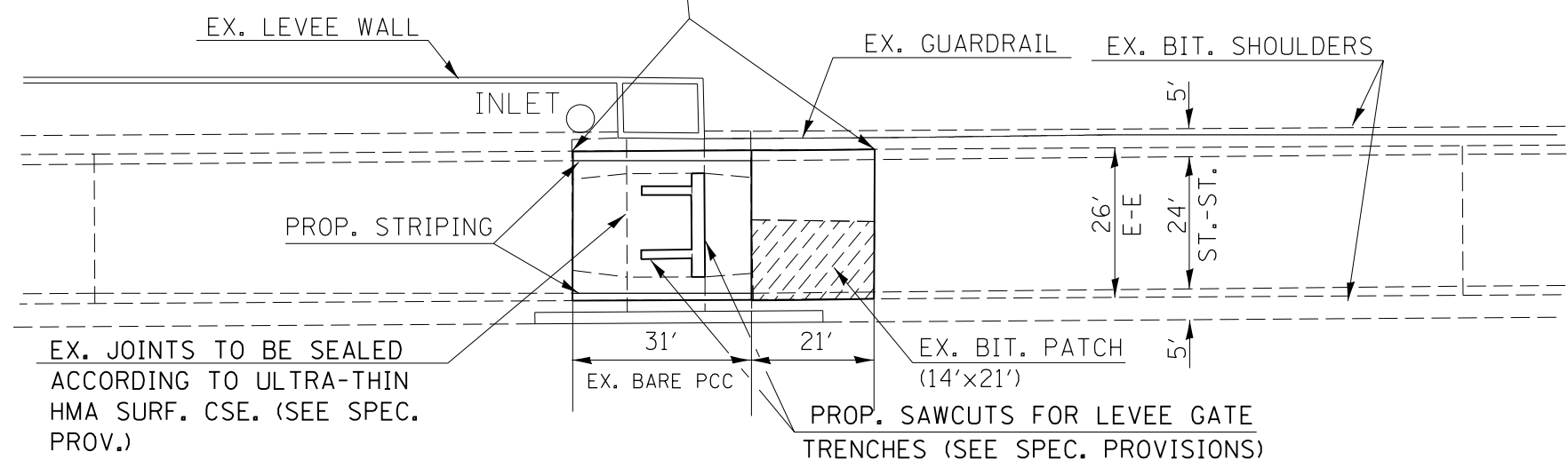
F.A.P. RTE.	SECTION	COUNTY	TOTAL SHEETS	SHEET NO.
D9 PAVT PRESERV 2014-1	JACKSON/POPE		23	22
CONTRACT NO. 78366			ILLINOIS FED. AID PROJECT	

NORTH LEVEE LOCATION
STA. 1665+00 IL. 146



NORTH LEVEE DETAIL

PROP. ULTRA-THIN HMA SURFACE COURSE,
RAPID SETTING POLYMER MODIFIED EMULSION
AND PROFILE DIAMOND GRINDING CONC. PAV'T.



•FAP 42(IL 13/127) & FAP 885(IL 146)

FILE NAME =	USER NAME = mccordkr	DESIGNED -	REVISED -
ei:\pw\work\p\idot\mccordkr\0342339\78366-sh1.pln.dgn		DRAWN -	REVISED -
Default	PLOT SCALE = 100.0000' / in.	CHECKED -	REVISED -
	PLOT DATE = 12/4/2013	DATE -	REVISED -

STATE OF ILLINOIS
DEPARTMENT OF TRANSPORTATION

NORTH LEVEE DETAILS
ON FAP 885 (IL. 146)

SCALE: SHEET OF SHEETS STA. TO STA.

F.A.P. RTE.	SECTION	COUNTY	TOTAL SHEETS	SHEET NO.
•	D9 PAVT PRESERV 2014-1	JACKSON/POPE	23	23
			CONTRACT NO. 78366	
ILLINOIS FED. AID PROJECT				