

02-28-14 LETTING ITEM 045

STATE OF ILLINOIS
DEPARTMENT OF TRANSPORTATION

SAFE ROUTES TO SCHOOLS

SECTION 12-00007-01-SP
JOB NO. C-95-306-13
PROJECT NO. SRTS-4009(235)
CITY OF ARCOLA
DOUGLAS COUNTY, ILLINOIS

ROUTE NO.	SECTION	COUNTY	TOTAL SHEETS	SHEET NO.
S.B.I. F.A.	12-00007-01-SP	DOUGLAS	9	1
FED. ROAD DIST. NO. 5		ILLINOIS	FED. AID PROJECT:	

INDEX OF SHEETS

- 1 TITLE SHEET
- 2 GENERAL NOTES SHEET
- 3 SUMMARY OF QUANTITIES SHEET
- 4 MISCELLANEOUS DETAILS SHEET
- 5-6 REMOVAL PLAN SHEETS
- 7-8 SIDEWALK PLAN SHEETS
- 9 GRADING PLAN SHEET

STANDARDS

- 000001-06 Standard Symbols, Abbreviations, and Patterns
- 001006 Decimal of an Inch and of a Foot
- 420701-02 Pavement Fabric
- 424001-07 Perpendicular Curb Ramps for Sidewalks
- 424026-01 Entrance/Alley Pedestrian Crossings
- 606001-05 Concrete Curb Type B and Combination Concrete Curb and Gutter
- 701801-05 Sidewalk, Corner or Crosswalk Closure
- 701901-03 Traffic Control Devices
- 720001-01 Sign Panel Mounting Details
- 720006-04 Sign Panel Erection Details
- BLR 22-7 Typical Application of Traffic Control Devices for Construction on Rural Local Highways (Two-Lane Two-Way Rural Traffic) (Road Closed to Thru Traffic)

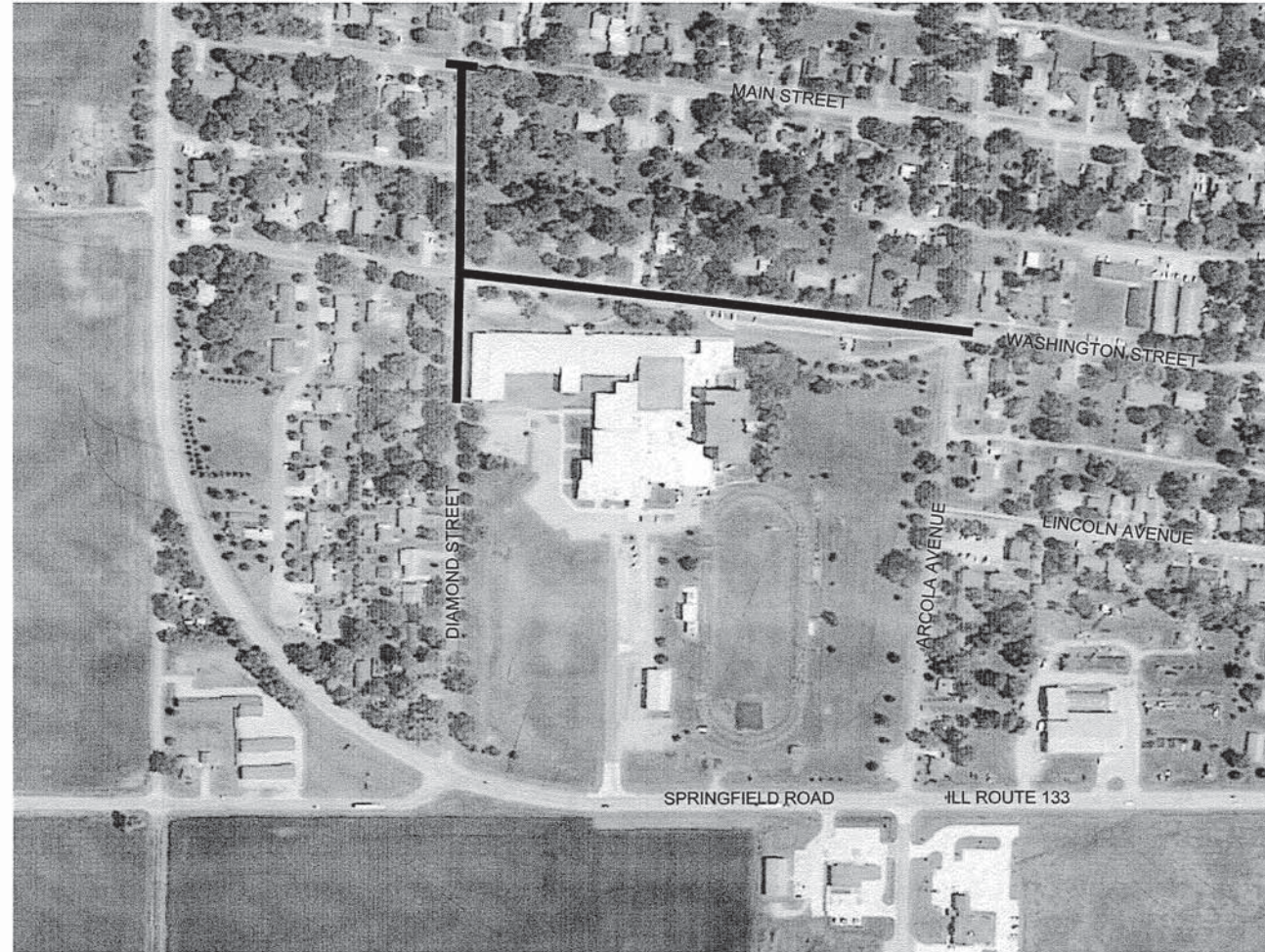
DESIGN STAGE J.U.L.I.E. DIG NUMBER
DIG # _____

J.U.L.I.E.
JOINT UTILITY LOCATION INFORMATION FOR EXCAVATION
1-800-892-0123

UTILITY NOTE

THE LOCATIONS OF THOSE BURIED AND ABOVEGROUND UTILITIES SHOWN ARE APPROXIMATE, ARE SHOWN FOR CONTRACTOR INFORMATIONAL USE ONLY, AND ARE NOT TO BE REFERENCED FOR CONSTRUCTION PURPOSES. THE IMPLIED PRESENCE OR ABSENCE OF UTILITIES IS NOT TO BE CONSTRUED BY THE OWNER, ENGINEER, CONTRACTOR, OR SUBCONTRACTORS TO BE AN ACCURATE AND COMPLETE REPRESENTATION OF UTILITIES THAT MAY OR MAY NOT EXIST ON THE CONSTRUCTION SITE. BURIED AND ABOVEGROUND UTILITY LOCATION, IDENTIFICATION, AND MARKING ARE THE SOLE RESPONSIBILITY OF THE CONTRACTOR. REROUTING, DISCONNECTION, PROTECTION, ETC. OF ANY UTILITIES MUST BE COORDINATED BETWEEN THE CONTRACTOR, UTILITY COMPANY, AND OWNER. SITE SAFETY, INCLUDING THE AVOIDANCE OF HAZARDS ASSOCIATED WITH BURIED AND ABOVEGROUND UTILITIES, REMAIN THE SOLE RESPONSIBILITY OF THE CONTRACTOR. CONTRACTOR MUST CONTACT J.U.L.I.E. 48 HOURS PRIOR TO THE BEGINNING OF CONSTRUCTION.

Contract No. 91484



LOCATION MAP
CITY OF ARCOLA

WEST WASHINGTON STREET
FUNCTIONAL CLASSIFICATION - Local Highway, Streets
2012 ADT - 375

DIAMOND STREET
FUNCTIONAL CLASSIFICATION - Local Highway, Streets
2012 ADT - 225

LENGTH OF PROJECT
WASHINGTON STREET = 1158 Feet (0.219 Mile)
DIAMOND STREET = 326 Feet (0.062 Mile)
MAIN STREET = 72 Feet (0.014 Mile)
TOTAL = 1556 Feet (0.295 Mile)



LOCATION OF SECTION INDICATED THIS: [Black Box]

APPROVED 12/11 2013
[Signature]
MAYOR, CITY OF ARCOLA

PASSED December 18 2013
[Signature]
ACTING DISTRICT FIVE ENGINEER OF LOCAL ROADS & STREETS

Releasing For Bid Based on Limited Review 12/18 2013
[Signature]
DEPUTY DIRECTOR OF HIGHWAYS,
REGION THREE ENGINEER
STATE OF ILLINOIS
DEPARTMENT OF TRANSPORTATION

SAFE ROUTES TO SCHOOLS
SECTION 12-00007-01-SP
CITY OF ARCOLA

PLANS DATED:
November 26, 2012

MILANO & GRUNLOH ENGINEERS, LLC
114 WEST WASHINGTON
P.O. BOX 697
EFFINGHAM, ILLINOIS 62401
Phone: (217) 342-7262
(800) 677-2714
Fax #: (217) 342-3433
Web Address: www.mgengineers.com
Design Firm #: 184-003108

Lee R. Beckman
REGISTERED PROFESSIONAL ENGINEER
OF ILLINOIS
No. 068890
My License Expires 11-30-15
P.E. No. 52890

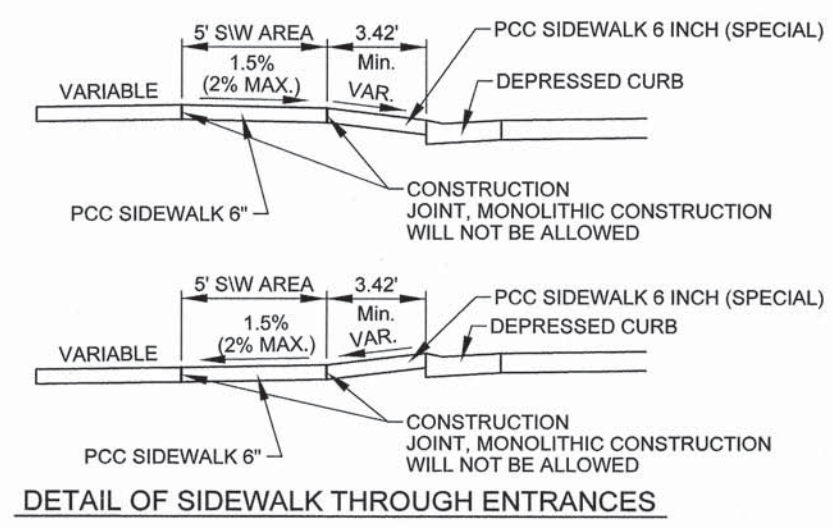
File name: S:\DWG\1212272\dwg\Title Sheet.dwg
Plot date: 11/26/13 at 14:30

ROUTE NO.	SECTION	COUNTY	TOTAL SHEETS	SHEET NO.
S.B.I.	12-0007-01-SP	DOUGLAS	9	2
F.A.				
FED. ROAD DIST. NO. 5	ILLINOIS	FED. AID PROJECT:		

CONTRACT #91484

- Pavement grades shown are at the top of pavement surfaces, unless otherwise noted in the plans.
- Erosion control measures shall be in accordance with IDOT Specifications. Placement shall be directed by the Engineer.
- All elevations refer to U.S.G.S. mean sea level datum.
- Any reference to a standard in the plans shall be interpreted to mean the edition as indicated by the sub-number listed on Sheet 1.
- Before ordering storm sewers, pipe culverts or pipe drains, the Contractor shall consult the Engineer for exact lengths.
- CURB AND GUTTER, WALKS, SLABS, AND PCC DRIVEWAY PAVEMENT 8"
 - Concrete curb and gutter shall be in accordance with IDOT Std. Spec. Locate contraction joints at 20 ft on center, unless otherwise shown. Locate expansion joints at minimum 100 ft. on center, unless otherwise shown.
 - Concrete walks, and islands shall be in accordance with IDOT Std. Spec. Unless otherwise shown, locate sidewalk contraction joints at 5 ft on center and expansions joints at 50 ft on center, unless otherwise shown, locate contraction joints in larger slabs at 15 ft intervals in each direction.
 - Concrete walks crossing through entrances shall be constructed in accordance with the detail shown below. Monolithically constructed sidewalks will not be allowed.
 - Dowel bars shall be used when Portland Cement Concrete Driveways are placed adjacent to any existing concrete. The dowel bars shall be 2 feet in length and shall be placed on 2 foot centers.

LEGEND	
○	IRON PIN FOUND
○ 1/4	1/4" IRON PIN FOUND
○ IP	IRON PIPE FOUND
○ N&W	NAIL & WASHER FOUND
○ N	NAIL FOUND
○ PK	PK NAIL FOUND
○ RR	RAILROAD SPIKE FOUND
○ T	"T" FENCE POST FOUND
○ X	CHISELED "X" IN CONCRETE FOUND
○ DH	DRILLED HOLE IN CONCRETE FOUND
⊙	SURVEY DISC FOUND
□	STONE FOUND
⊗	TREE (DECIDUOUS)
⊛	TREE (EVERGREEN)
⊙	FIRE HYDRANT
⊞	WATER METER
— v —	WATER MAIN (EXISTING)
— w —	WATER SERVICE LINE (EXISTING)
⊗	VALVE (GAS OR WATER)
⊞	GAS METER
— g —	GAS MAIN (EXISTING)
— g —	GAS SERVICE LINE (EXISTING)
□ C	CABLE TV PEDESTAL
— CT —	UNDERGROUND CABLE TV (EXISTING)
□ T	TELEPHONE PEDESTAL
⊙	TELEPHONE MANHOLE
— T —	TELEPHONE CABLE (EXISTING)
— t —	TELEPHONE SERVICE WIRE (EXISTING)
⊙	POWER POLE
⊙	POWER POLE w/LIGHT
⊙	GUY ANCHOR
⊙	LIGHTPOLE (EXISTING)
⊙	SIDEWALK LIGHT (EXISTING)
□ E	ELECTRIC PEDESTAL
— DHE —	OVERHEAD ELECTRIC (EXISTING)
— E —	UNDERGROUND ELECTRIC (EXISTING)
LS	LANDSCAPING
⊙	FENCE POST
— x —	FENCE



	MILANO & GRUNLOH ENGINEERS, LLC	GENERAL NOTES SAFE ROUTES TO SCHOOLS SECTION 12-0007-01-SP CITY OF ARCOLA DOUGLAS COUNTY, ILLINOIS
	114 WEST WASHINGTON P.O. BOX 897 EFFINGHAM, ILLINOIS 62401	
	PHONE: (217) 347-7282 (800) 671-2714 FAX #: (217) 343-3433	
	File name: S:\DWG\1212272\dwg\Title Sht.dwg Plot date: 11/25/13 at 14:30	

ROUTE NO.	SECTION	COUNTY	TOTAL SHEETS	SHEET NO.
S.B.A. F.A.	12-00007-01-SP	DOUGLAS	9	3
FED. ROAD DIST. NO. 5	ELINOS	FED. AID PROJECT:	CONTRACT #91484	

SUMMARY AND SCHEDULE OF QUANTITIES					PLAN SHEETS			
ITEM NO.	ITEM DESCRIPTION	UNIT	TOTAL QUANTITY	#5	#6	#7	#8	
20200100	EARTH EXCAVATION	CU YD	400	188	212			
20800150	TRENCH BACKFILL	CU YD	24			24		
21101600	TOPSOIL FURNISH AND PLACE, VARIABLE DEPTH	SQ YD	451			437	14	
35101400	AGGREGATE BASE COURSE, TYPE B	TON	276			168	108	
42001300	PROTECTIVE COAT	SQ YD	2795			2025	770	
42400100	PORTLAND CEMENT CONCRETE SIDEWALK 4 INCH	SQ FT	9067			6953	2114	
42400300	PORTLAND CEMENT CONCRETE SIDEWALK 6 INCH	SQ FT	3577			3543	34	
42400800	DETECTABLE WARNINGS	SQ FT	356			276	80	
44000100	PAVEMENT REMOVAL	SQ YD	441	420	21			
44000500	COMBINATION CURB AND GUTTER REMOVAL	FOOT	56	34	22			
44000600	SIDEWALK REMOVAL	SQ FT	6806	6283	523			
44213100	PAVEMENT FABRIC	SQ YD	1194			725	469	
550A2320	STORM SEWERS, RUBBER GASKET, CLASS A, TYPE 1 1/2"	FOOT	90			90		
60235700	INLETS, TYPE A, TYPE 3 FRAME AND GRATE	EACH	2			2		
60236200	INLETS, TYPE A, TYPE 8 GRATE	EACH	1			1		
60260300	INLETS TO BE ADJUSTED WITH NEW TYPE 1 FRAME, OPEN LID	EACH	1			1		
60260500	INLETS TO BE ADJUSTED WITH NEW TYPE 3 FRAME AND GRATE	EACH	3			3		
60604400	COMBINATION CONCRETE CURB AND GUTTER, TYPE B-6.18	FOOT	71			36	35	
67100100	MOBILIZATION	L SUM	1					
LR420029	PORTLAND CEMENT PAVEMENT 8" (SPECIAL)	SQ YD	1194			725	469	
X0323389	STORM SEWER CONNECTION	EACH	2			2		
X0696100	PARKING BLOCKS	EACH	17				17	
X2501000	SEEDING, CLASS 2 (SPECIAL)	ACRE	0.10			0.09	0.01	
X6061700	COMBINATION CURB AND GUTTER, TYPE B (SPECIAL)	FOOT	588			568	20	
X6640304	CHAIN LINK FENCE TO BE REMOVED AND RE-ERECTED	FOOT	105		105			
X7010216	TRAFFIC CONTROL AND PROTECTION, (SPECIAL)	L SUM	1					
XX007259	SIGN AND POST REMOVAL	EACH	4	4				
XX007309	BOLLARDS, QUICK RELEASE	EACH	4			4		
Z0004002	BOLLARDS	EACH	2				2	
Z0011500	COLD MILLING, EXISTING SURFACE	SQ YD	176			147	29	

* SPECIAL PROVISION
 Δ SPECIALTY ITEMS

EARTH EXCAVATION			
LOCATION	EARTH EXCAVATION (CU YD)	EXCAVATION TO BE USED IN EMBANKMENT ADJUSTED FOR SHRINKAGE (COLUMN 1 X 0.75) (CU YD)	EMBANKMENT (CU YD)
STA. 40+10 RT. TO STA. 45+15 RT.	188	141	100
STA. 10+60 RT. TO STA. 13+15 RT.	212	159	50
TOTAL	400	300	150

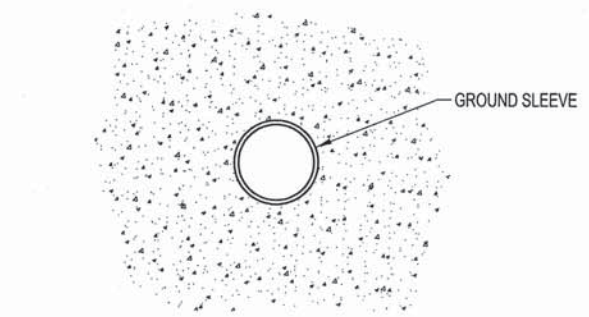
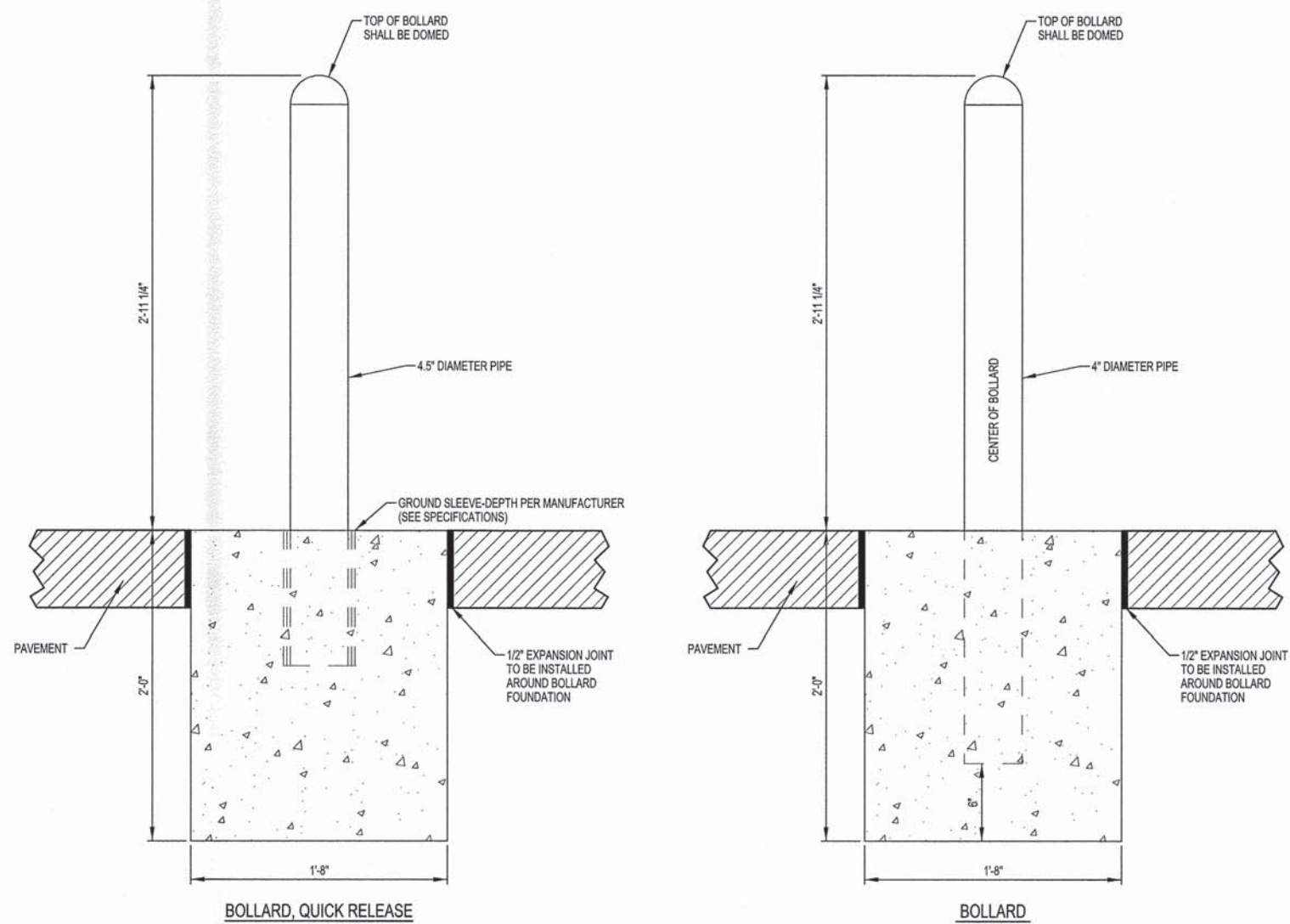
SEEDING, CLASS 2 (SPECIAL)	
LOCATION	ACRES
STA. 40+20 RT. TO STA. 40+80 RT.	0.01
STA. 42+00 RT. TO STA. 43+50 RT.	0.07
STA. 43+80 RT. TO STA. 45+20 RT.	0.02
STA. 13+10 RT. TO STA. 13+20 RT.	0.01
TOTAL	0.10

STORM SEWER STRUCTURE SCHEDULE									
#	LOCATION	EX. LID OR GRATE	EX. LID OR GRATE ELEV.	PROPOSED LID OR GRATE ELEV.	PROPOSED INVERT	PAY ITEMS			
						INLETS TO BE ADJUSTED WITH NEW TYPE 1 FRAME, OPEN LID	INLETS TO BE ADJUSTED WITH NEW TYPE 3 FRAME AND GRATE	INLETS, TYPE A, TYPE 8 GRATE	INLETS, TYPE A, TYPE 3 FRAME AND GRATE
1	STA. 40+85, 19' RT.	1	670.61	671.65			1		
2	STA. 41+84, 16' RT.	8	670.44	671.44	666.74 (SE)	1			
3	STA. 44+22, 17' RT.	8	671.09	671.30			1		
4	STA. 45+21, 14' RT.	8	671.17	671.55			1		
5	STA. 41+55, 32' RT.			670.00	667.17 (E)			1	
6	STA. 41+95, 31' RT.			671.72	666.96 (NW, W)				1
7	STA. 43+52, 32' RT.			671.25	668.90 (N)				1
8	STA. 43+52, 2' RT.	1	671.54		668.77 (S)				
TOTAL						1	3	1	2

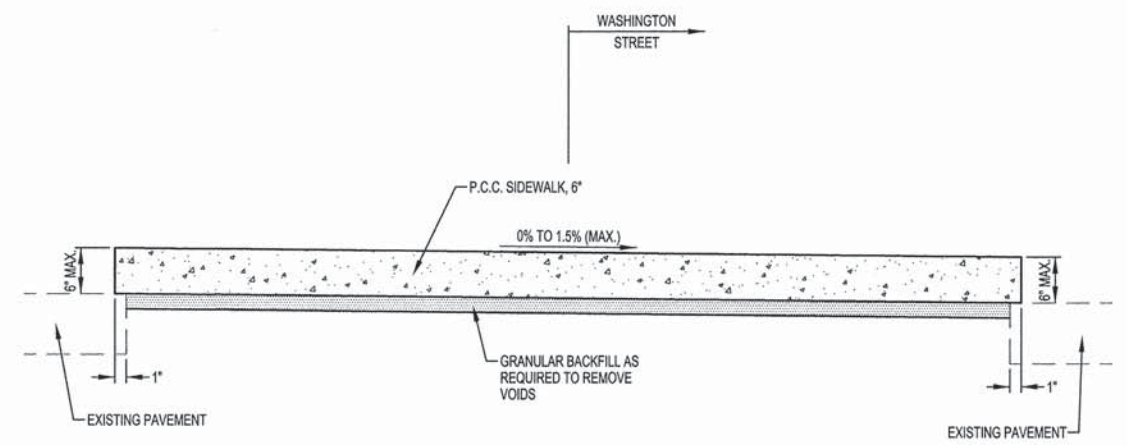
* Elevations shown are for estimating only. Actual elevations to be determined in the field.

	MILANO & GRUNLOH ENGINEERS, LLC 114 WEST WASHINGTON P.O. BOX 897 EFFINGHAM, ILLINOIS 62401 Phone: (217) 347-3782 (800) 677-2714 Fax #: (217) 342-3428 Web Address: www.mgengr.com Design Firm #: 184-003108	SUMMARY OF QUANTITIES SAFE ROUTES TO SCHOOLS SECTION 12-00007-01-SP CITY OF ARCOLA DOUGLAS COUNTY, ILLINOIS
	File name: S:\DWG\1212272.dwg\Quantities.dwg Plot date: 11/26/13 at 14:30	

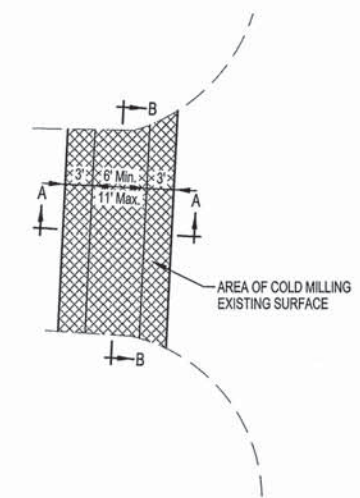
ROUTE NO.	SECTION	COUNTY	TOTAL SHEETS	SHEET NO.
	12-00007-01-SP	DOUGLAS	9	4
FED. ROAD DIST. NO. 5		ILLINOIS	FED. AID PROJECT	
CONTRACT #91484				



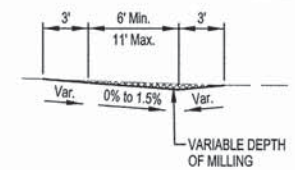
BOLLARD, QUICK RELEASE GROUND SLEEVE DETAIL



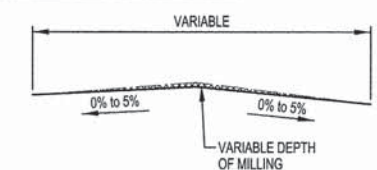
SIDEWALK DETAIL - ARCOLA SCHOOL FACILITY PARKING AREA



DETAIL - COLD MILLING EXISTING SURFACE



SECTION "A-A"



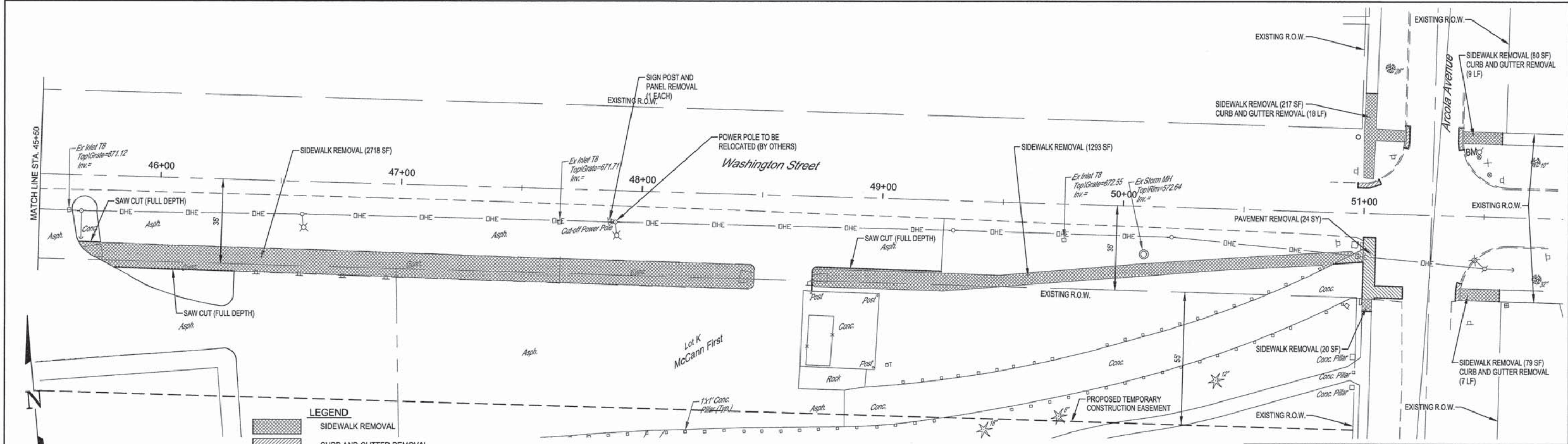
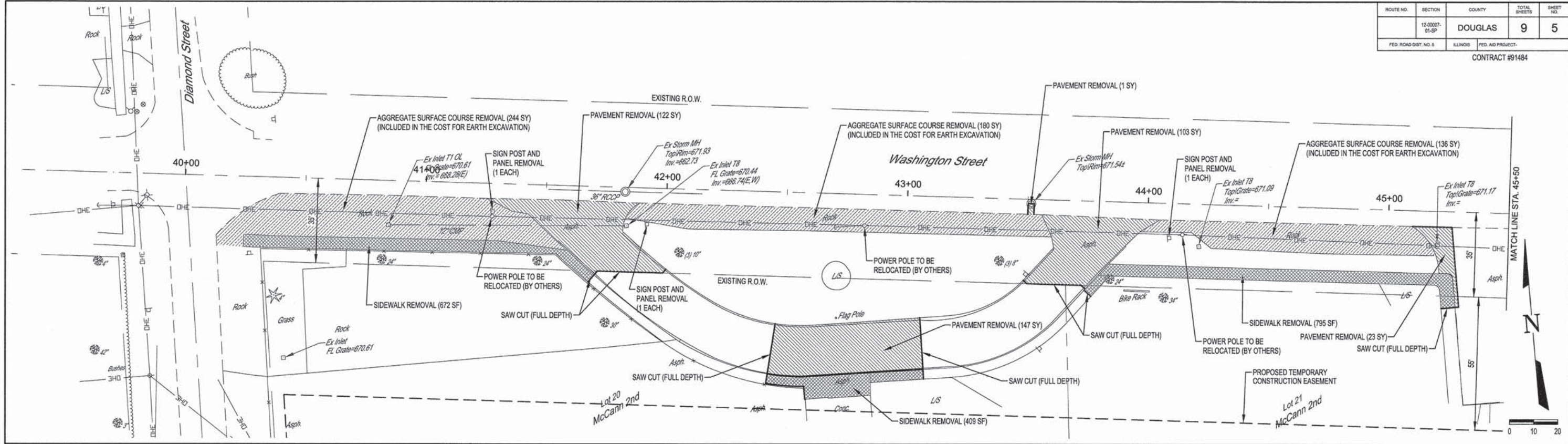
SECTION "B-B"

MILANO & GRUNLOH ENGINEERS, LLC
 114 WEST WASHINGTON
 P.O. BOX 697
 EFFINGHAM, ILLINOIS 62401
 Phone: (217) 341-7282
 Fax #: (217) 342-3433
 Web Address: www.mgengineers.com
 Design Firm #: 184-003108

MISCELLANEOUS DETAILS
 SAFE ROUTES TO SCHOOLS
 SECTION 12-00007-01-SP
 CITY OF ARCOLA, ILLINOIS
 DOUGLAS COUNTY, ILLINOIS

File name: S:\DWG\1212272\dwg\Details.dwg
 Plot date: 11/26/13 at 14:30

ROUTE NO.	SECTION	COUNTY	TOTAL SHEETS	SHEET NO.
	12-00007-01-SP	DOUGLAS	9	5
FED. ROAD DIST. NO. 5	ILLINOIS	FED. AID PROJECT	CONTRACT #91484	



LEGEND

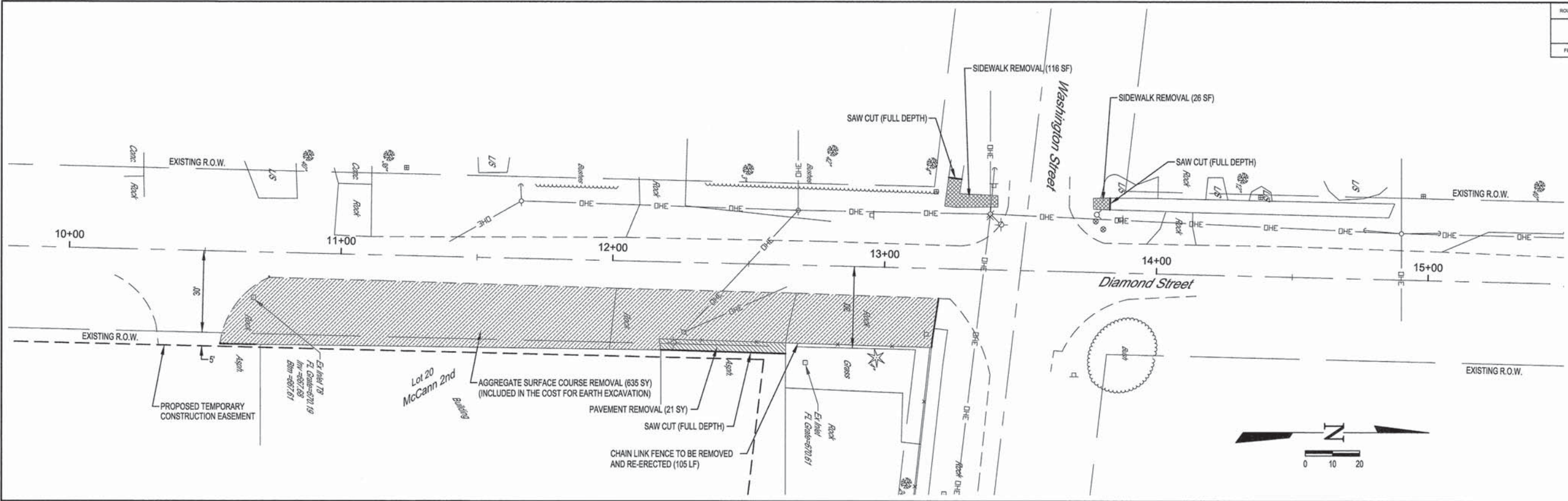
	SIDEWALK REMOVAL
	CURB AND GUTTER REMOVAL
	PAVEMENT REMOVAL

MILANO & GRUNLOH ENGINEERS, LLC
 114 WEST WASHINGTON
 P.O. BOX 891
 EFFINGHAM, ILLINOIS 62401
 Phone: (217) 347-7282
 Fax: (217) 347-2714
 Web Address: www.mgengineers.com
 Design Firm #: 194-003108

REMOVAL PLAN
WASHINGTON STREET
SAFE ROUTES TO SCHOOLS
SECTION 12-00007-01-SP
CITY OF ARCOLA, ILLINOIS
DOUGLAS COUNTY, ILLINOIS

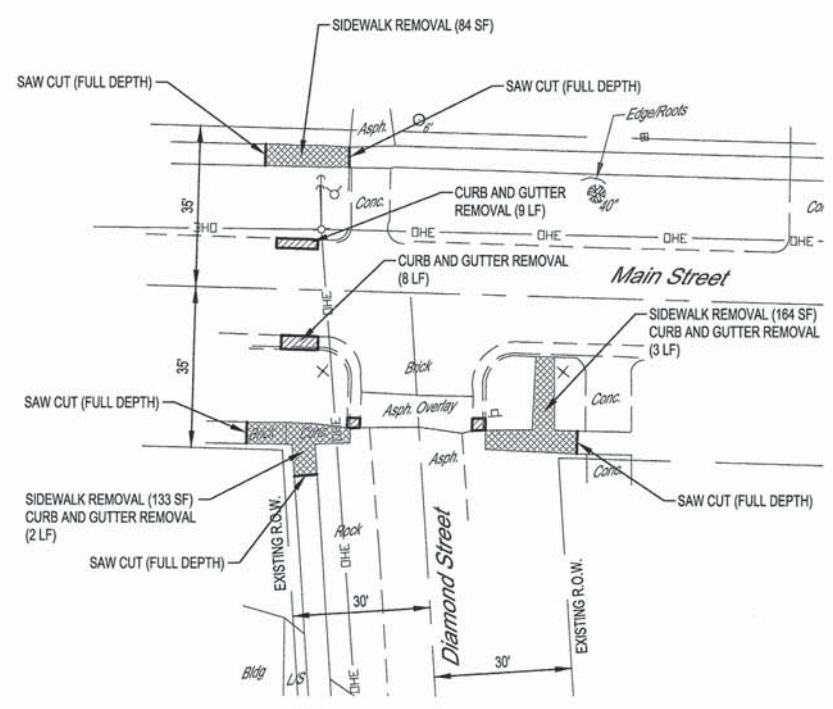
File name: S:\DWG\1212272\dwg\Removal.dwg
 Plot date: 12/13/13 at 08:40
 F.B. 701,703,704

ROUTE NO.	SECTION	COUNTY	TOTAL SHEETS	SHEET NO.
	12-0007-01-SP	DOUGLAS	9	6
FED. ROAD DIST. NO. 9		ILLINOIS	FED. AID PROJECT:	
CONTRACT #91484				



LEGEND

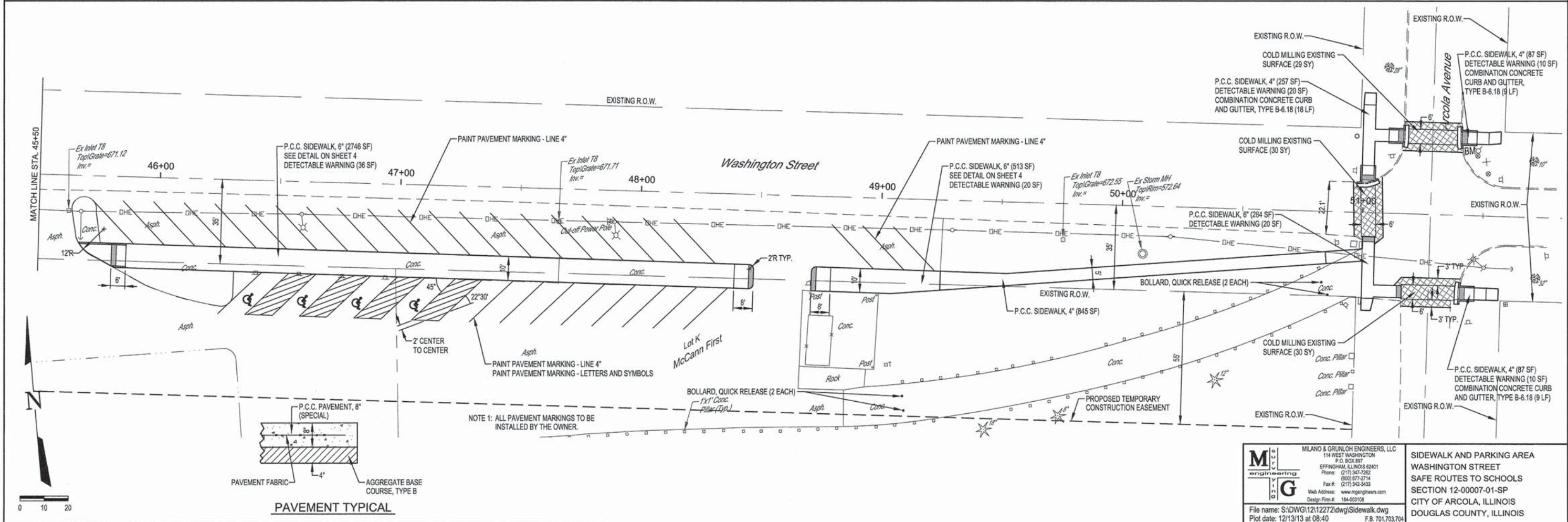
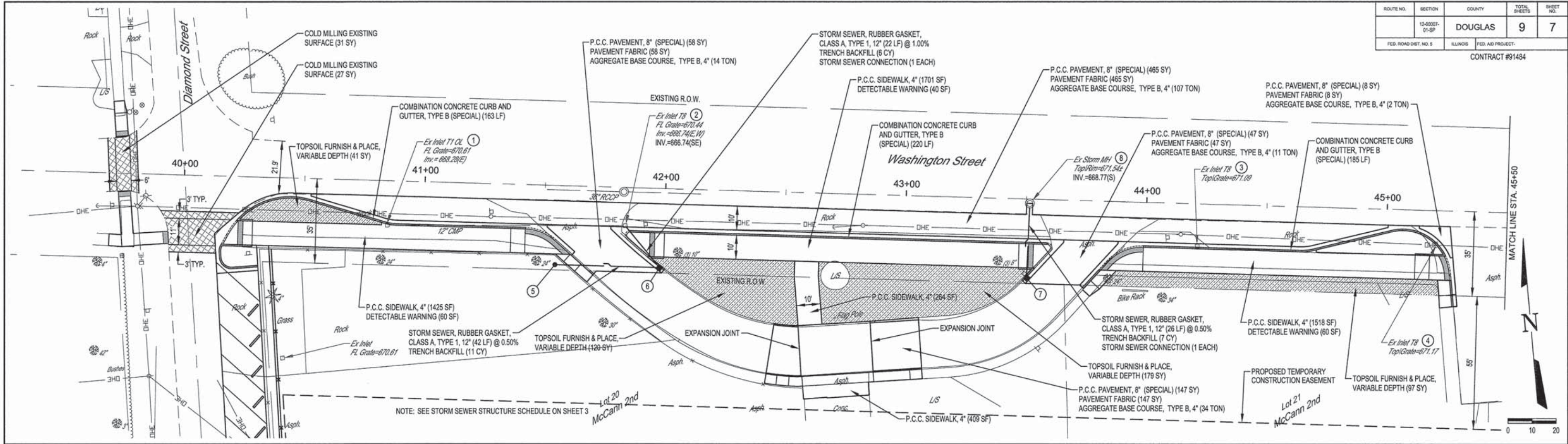
	SIDEWALK REMOVAL
	CURB AND GUTTER REMOVAL
	PAVEMENT REMOVAL



	MILANO & GRUNLOH ENGINEERS, LLC 114 WEST WASHINGTON P.O. BOX 857 EFFINGHAM, ILLINOIS 62401 Phone: (217) 347-7282 (800) 677-2714 Fax #: (217) 340-3483 Web Address: www.mgengr.com Design Firm #: 184-003108	REMOVAL PLAN DIAMOND STREET SAFE ROUTES TO SCHOOLS SECTION 12-0007-01-SP CITY OF ARCOLA, ILLINOIS DOUGLAS COUNTY, ILLINOIS
	File name: S:\DWG\12\12272\dwg\Removal.dwg	
	Plot date: 12/13/13 at 08:40	
	F.B. 701.703.704	

ROUTE NO.	SECTION	COUNTY	TOTAL SHEETS	SHEET NO.
12-0007-01-SP		DOUGLAS	9	7
FED. ROAD DIST. NO. 5		ILLINOIS	FED. AID PROJECT:	

CONTRACT #91484

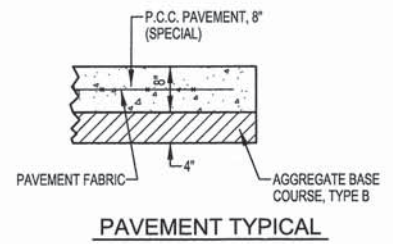
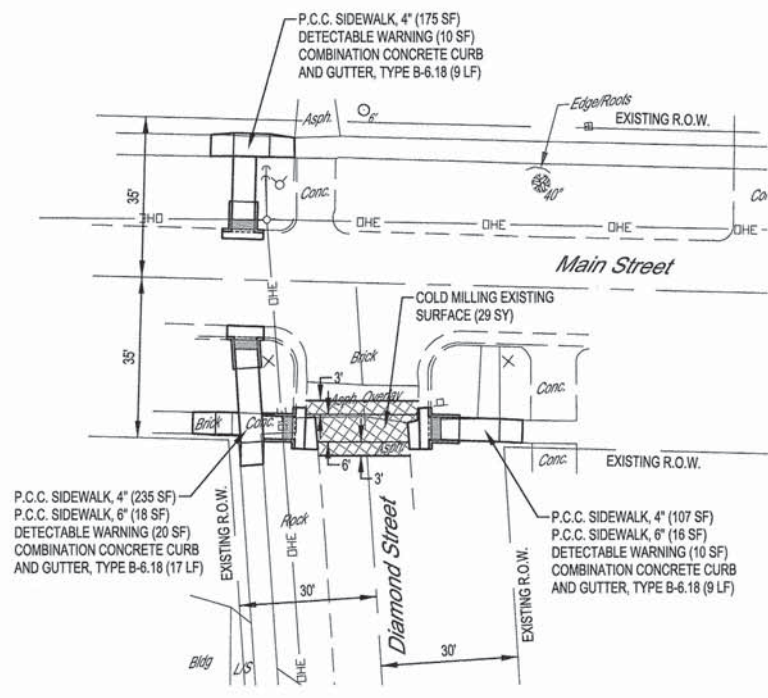
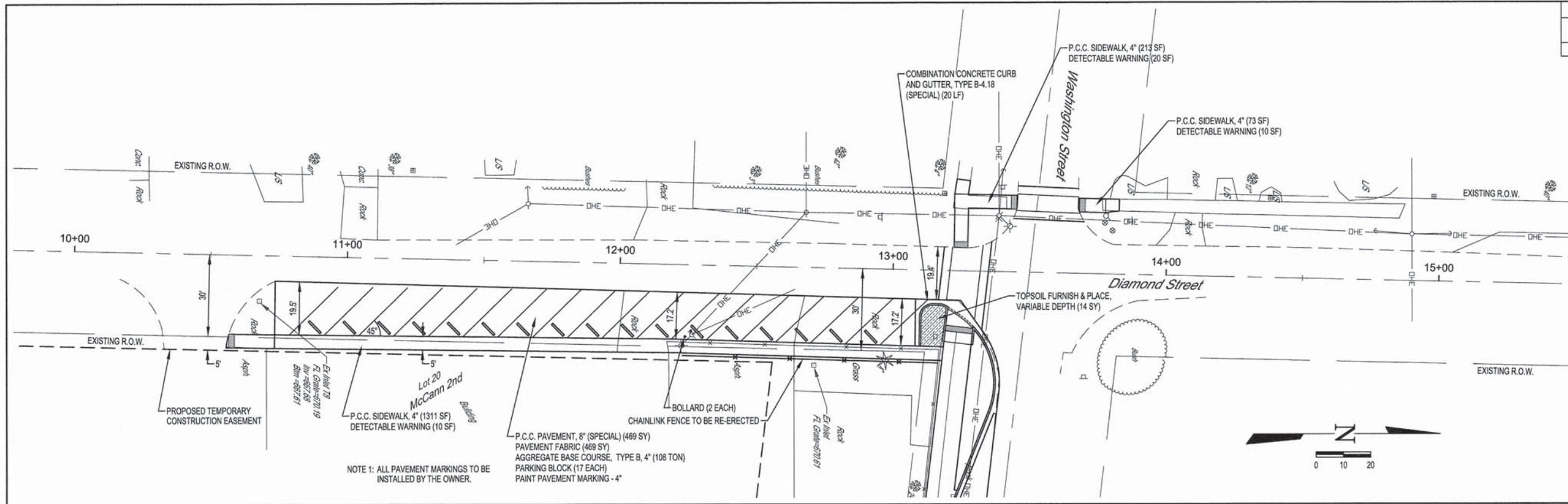


MILANO & GRUNLOH ENGINEERS, LLC
 114 WEST WASHINGTON
 P.O. BOX 897
 EFFINGHAM, ILLINOIS 62401
 Phone: (217) 347-7282
 Fax: (217) 347-2714
 Web Address: www.mgengr.com
 Design Firm #: 184-003108

**SIDEWALK AND PARKING AREA
 WASHINGTON STREET
 SAFE ROUTES TO SCHOOLS
 SECTION 12-00007-01-SP
 CITY OF ARCOLA, ILLINOIS
 DOUGLAS COUNTY, ILLINOIS**

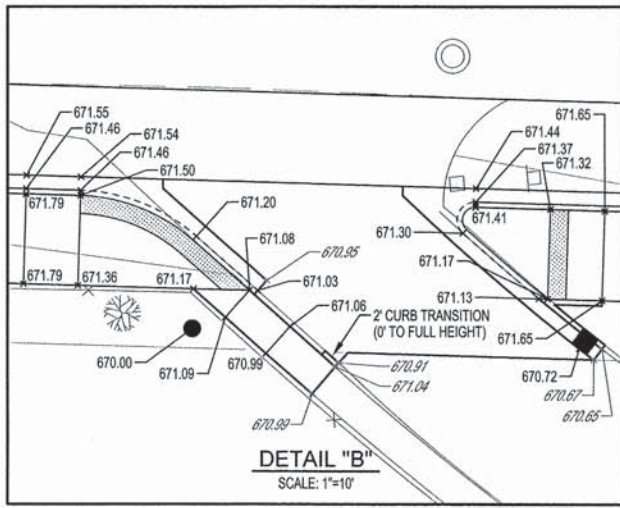
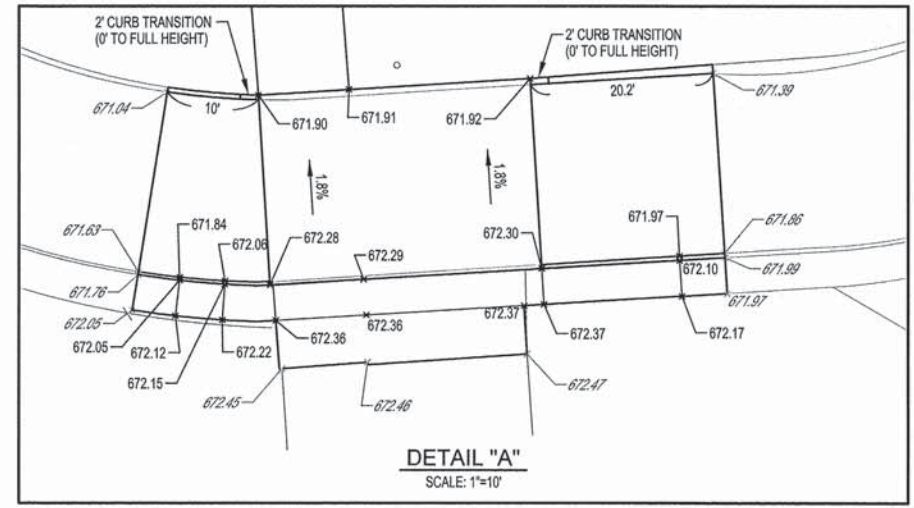
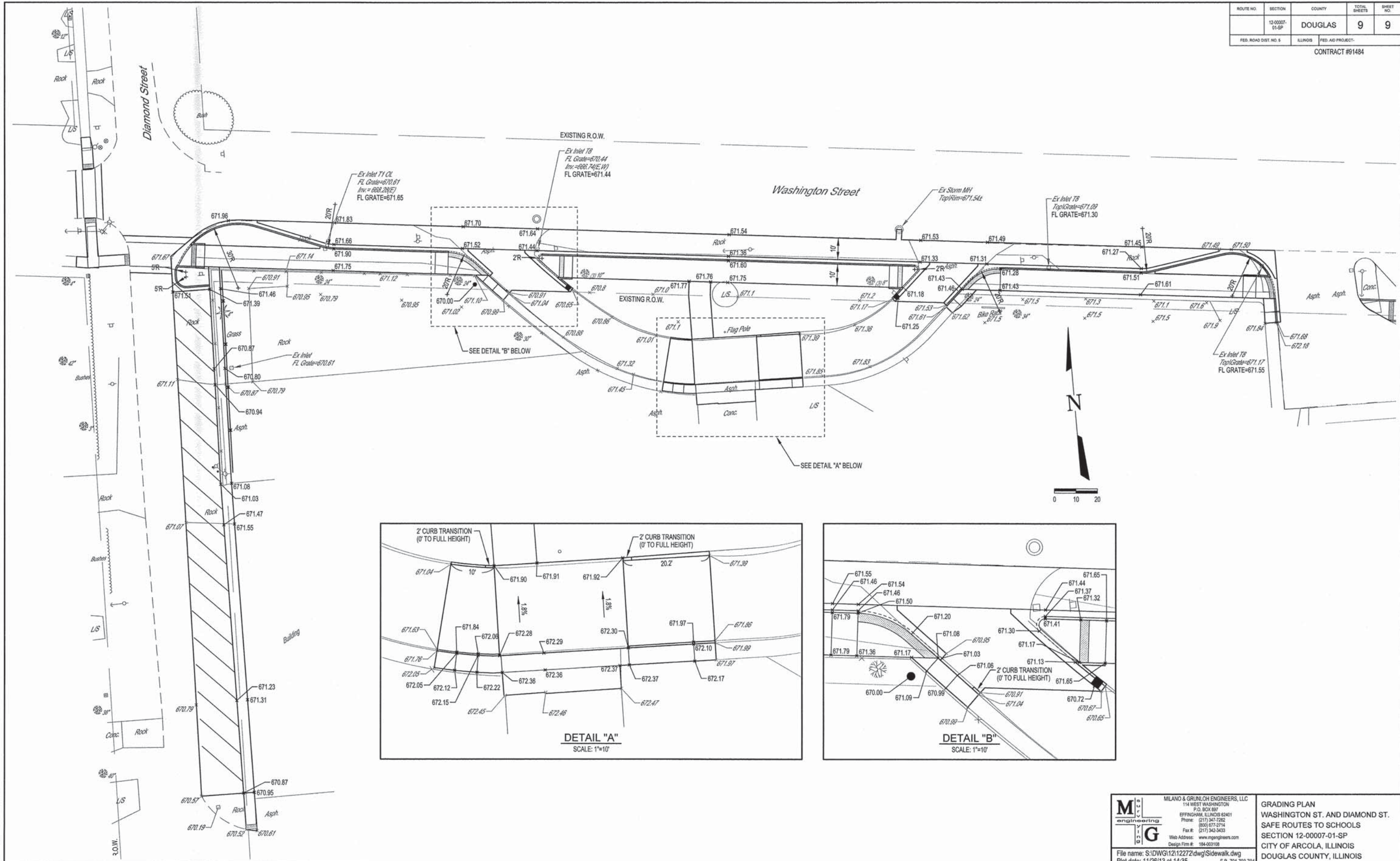
File name: S:\DWG\1212272\dwg\Sidewalk.dwg
 Plot date: 12/13/13 at 08:40
 F.B. 701,703,704

ROUTE NO.	SECTION	COUNTY	TOTAL SHEETS	SHEET NO.
	12-0007-01-SP	DOUGLAS	9	8
FED. ROAD DIST. NO. 5		ILLINOIS	FED. AID PROJECT:	
CONTRACT #91484				



	MILANO & GRUNLOH ENGINEERS, LLC 114 WEST WASHINGTON P.O. BOX 997 EFFINGHAM, ILLINOIS 62401	SIDEWALK AND PARKING AREA DIAMOND STREET SAFE ROUTES TO SCHOOLS SECTION 12-0007-01-SP CITY OF ARCOLA, ILLINOIS DOUGLAS COUNTY, ILLINOIS
	Phone: (217) 341-7282 (800) 671-2714 Fax #: (217) 343-3433	
	Web Address: www.mgeengineers.com Design Firm #: 184-003106	
	File name: S:\DWG\12\12272\dwg\Sidewalk.dwg Plot date: 12/13/13 at 08:40	

ROUTE NO.	SECTION	COUNTY	TOTAL SHEETS	SHEET NO.
	12-0007-01-SP	DOUGLAS	9	9
FED. ROAD DIST. NO. 5	ALLIANCE	FED. AID PROJECT:		
CONTRACT #91484				



	MILANO & GRUNLOH ENGINEERS, LLC 114 WEST WASHINGTON P.O. BOX 897 EFFINGHAM, ILLINOIS 62401	GRADING PLAN WASHINGTON ST. AND DIAMOND ST. SAFE ROUTES TO SCHOOLS SECTION 12-0007-01-SP CITY OF ARCOLA, ILLINOIS DOUGLAS COUNTY, ILLINOIS
	Phone: (217) 347-7282 Fax: (217) 342-3433	
	Web Address: www.mgengineers.com Design Firm #: 184-00108	
	File name: S:\DWG\12\12272\dwg\Sidewalk.dwg Plot date: 11/26/13 at 14:35	