

INDEX OF SHEETS

1	COVER SHEET
2	GENERAL NOTES
3-4	SUMMARY OF QUANTITIES
5	TYPICAL SECTIONS
6-7	SCHEDULE OF QUANTITIES
8-10	PLAN AND PROFILES
11	TRAFFIC CONTROL & PROTECTION
12-15	INTERSECTION DETAILS
16	PAVEMENT MARKING PLAN
17-18	MISCELLANEOUS DETAILS
19-25	CROSS SECTIONS - COLUMBUS ROAD
26-28	CROSS SECTIONS - ST. DOMINIC'S SCHOOL

HIGHWAY STANDARDS

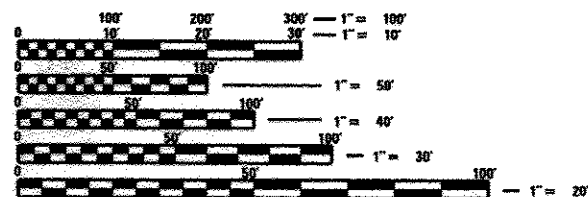
SEE SHEET 2 FOR LIST OF HIGHWAY STANDARDS

DESIGN DESIGNATION

FAU 7802 (COLUMBUS ROAD)
MINOR ARTERIAL
ADT = 4400 (2011) 4800 (2031)
DESIGN SPEED = 30 MPH

PROJECT DESCRIPTION

PROJECT CONSISTS OF CONSTRUCTING A NEW SIDEWALK ALONG COLUMBUS ROAD FROM ST. DOMINIC'S SCHOOL TO CHESHIRE BLVD. CONSTRUCTING SIDEWALK FROM COLUMBUS ROAD UP TO THE SCHOOL ENTRANCE, IMPROVING RAMPS AND CROSSWALKS, IMPROVING DRIVEWAY AND SCHOOL ENTRANCES, CONSTRUCTING CURB & GUTTER, INLETS, 4 FOOT WIDENING, AND OTHER MISCELLANEOUS ITEMS.



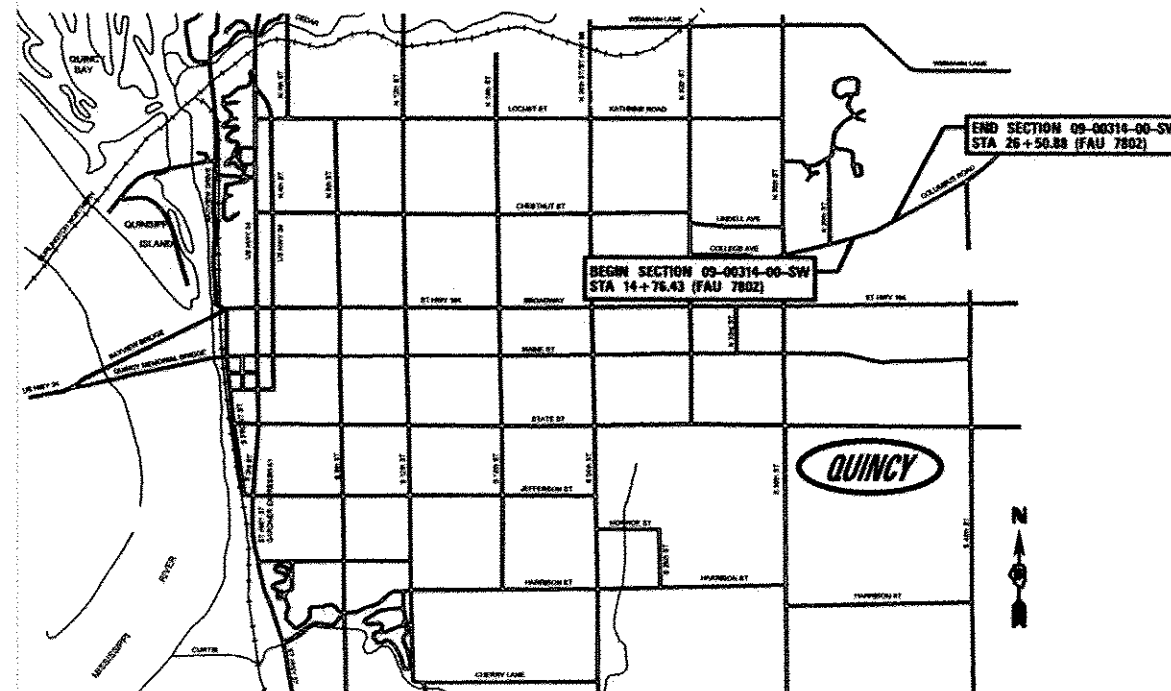
FULL SIZE PLANS HAVE BEEN PREPARED USING STANDARD ENGINEERING SCALES. REDUCED SIZED PLANS WILL NOT CONFORM TO STANDARD SCALES. IN MAKING MEASUREMENTS ON REDUCED PLANS, THE ABOVE SCALES MAY BE USED.

J.U.L.I.E.
JOINT UTILITY LOCATION INFORMATION FOR EXCAVATION
1-800-892-0123
OR 811

CONTRACT NO. **93611**

SIDEWALKS, CURB & GUTTER, AND WIDENING ON FAU 7802 (COLUMBUS ROAD)

QUINCY, ADAMS COUNTY, ILLINOIS
PROJECT #: SRTS-4008(088)
JOB NUMBER: C-40-083-09
SECTION 09-00314-00-SW
SAFE ROUTES TO SCHOOL PROGRAM FUNDING

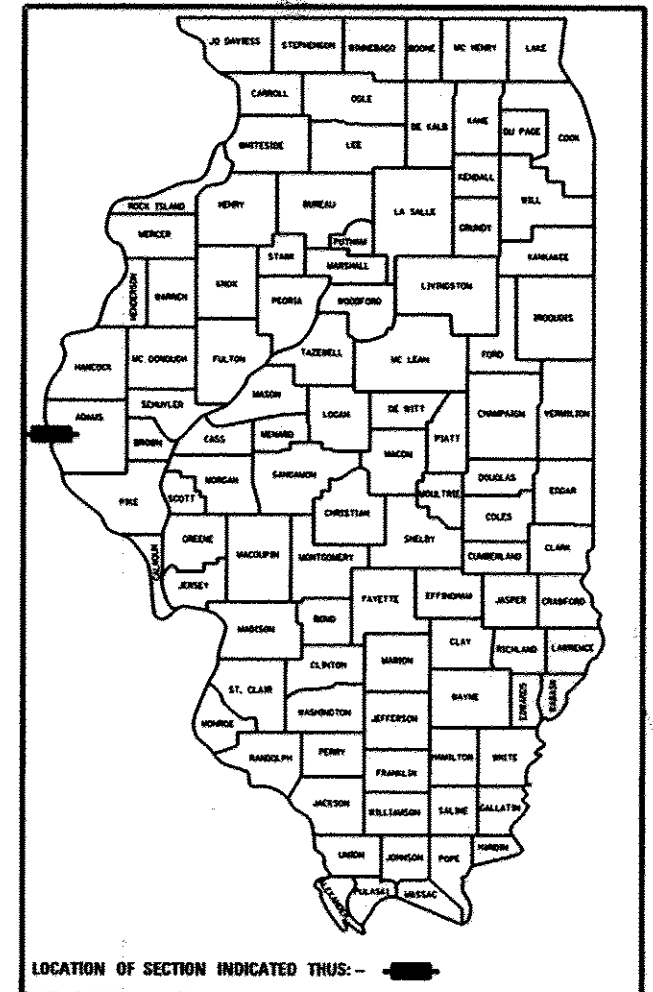


0 14 12 34 1 MILE
GRAPHIC SCALE IN MILES

LOCATION MAP

NET LENGTH OF SECTION = 1,174.45 FT = 0.2224 MILES

P.A.D. RTE.	SECTION	COUNTY	TOTAL SHEETS	SHEET NO.
7802	09-00314-00-SW	ADAMS	26	1
FED. ROAD DIST. NO.	ILLINOIS			



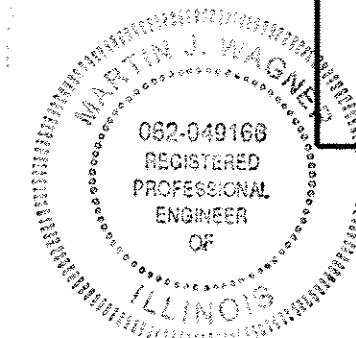
APPROVED November 8, 2013
Jeffrey M. ...
DIRECTOR OF ENGINEERING

PASSED November 27, 2013
Terrence H. Fountain
DISTRICT SIX ENGINEER OF LOCAL ROADS & STREETS

PASSED 11-27-2013
Ron Chamberlain
DISTRICT SIX ENGINEER OF CONSTRUCTION

Releasing For
Bid Based on November 27, 2013
Limited Review *Roger L. Driskell*
DEPUTY DIRECTOR OF HIGHWAYS, REGION FOUR ENGINEER

STATE OF ILLINOIS
DEPARTMENT OF TRANSPORTATION



Martin J. Wagner 11/8/13
DATE
REGISTERED PROFESSIONAL ENGINEER
STATE OF ILLINOIS NO. 062-049168
LICENSE EXPIRES NOVEMBER 30, 2015

HIGHWAY STANDARDS

000001-06	STANDARD SYMBOLS, ABBREVIATIONS AND PATTERNS
424001-07	PERPENDICULAR CURB RAMPS FOR SIDEWALKS
424011-01	CORNER PARALLEL CURB RAMPS FOR SIDEWALKS
424016-01	MID-BLOCK CURB RAMPS FOR SIDEWALKS
424026-01	ENTRANCE/ALLEY PEDESTRIAN CROSSINGS
602301-04	INLET - TYPE A
602701-02	MANHOLE STEPS
604036-02	GRATE TYPE B
606001-05	CONCRETE CURB TYPE B AND COMBINATION CONCRETE CURB AND GUTTER
701006-05	OFF-ROAD OPERATIONS, 2L, 2W, 15' TO 24' FROM PAVEMENT EDGE
701701-09	URBAN LANE CLOSURE, MULTILANE INTERSECTION
701801-05	SIDEWALK, CORNER OR CROSSWALK CLOSURE
701901-03	TRAFFIC CONTROL DEVICES
720001-01	SIGN PANEL MOUNTING DETAILS
780001-04	TYPICAL PAVEMENT MARKINGS

RATES OF APPLICATION TABLE

1.

THE NOMINAL THICKNESS FOR BASE AND SURFACE COURSES ARE SHOWN ON THE TYPICAL SECTIONS, STANDARDS, SCHEDULES, OR SPECIAL DETAILS. THE CONSTRUCTED THICKNESS OF THE ABOVE ITEMS SHALL NOT BE LESS THAN 90 PERCENT OF THE NOMINAL THICKNESS AT ANY LOCATION.

THE THICKNESS OF BITUMINOUS MIXTURE SHOWN ON THE PLANS IS THE NOMINAL THICKNESS. DEVIATIONS FROM THE NOMINAL THICKNESS WILL BE PERMITTED WHEN SUCH DEVIATIONS OCCUR DUE TO IRREGULARITIES IN THE EXISTING SURFACE OR BASE ON WHICH THE BITUMINOUS MIXTURE IS PLACED.
2.

WHERE SECTION OF SUB-SECTION MONUMENTS, USGS BENCH MARK MONUMENTS, AND U.S. ARMY CORPS OF ENGINEERS SURVEY MARKERS ARE ENCOUNTERED, THE ENGINEER SHALL BE NOTIFIED BEFORE SUCH MONUMENTS ARE REMOVED. THE CONTRACTOR SHALL PROTECT AND CAREFULLY PRESERVE ALL PROPERTY MARKERS AND MONUMENTS UNTIL THE OWNER AND AN AUTHORIZED SURVEYOR OR AGENT, HAS WITNESSED OR OTHERWISE REFERENCED THEIR LOCATION.
3.

ALL ELEVATIONS SHOWN REFER TO THE U.S.G.S. DATUM AT SEA LEVEL, UNLESS OTHERWISE NOTED.
4.

UTILITIES ARE SHOWN IN ACCORDANCE WITH THE BEST AVAILABLE INFORMATION, AND THEIR TRUE LOCATION IS NOT GUARANTEED TO BE AS SHOWN ON THE PLANS. IT WILL BE THE CONTRACTOR'S RESPONSIBILITY TO DETERMINE THE EXACT LOCATION OF ALL UTILITIES AND CARRY OUT HIS OR HER OPERATIONS ACCORDINGLY.
5.

THE FOLLOWING UTILITIES HAVE FACILITIES WITHIN THE LIMITS OF CONSTRUCTION:

CITY OF QUINCY	SANITARY SEWER	730 MAINE ST. QUINCY, IL	(217)-228-4555
CITY OF QUINCY	WATER	730 MAINE ST. QUINCY, IL	(217)-228-4580
AMEREN CIPS	ELECTRICAL	700 JERSEY ST. QUINCY, IL	1-800-789-2477
AMEREN CIPS	GAS	700 JERSEY ST. QUINCY, IL	1-800-789-2477
AMERITECH	TELEPHONE	601 BROADWAY QUINCY, IL	(217)-224-9961
INSIGHT COMMUNICATIONS	CABLE	2930 STATE ST. QUINCY, IL	(217)-222-5388
6.

ADJUSTMENTS OF UTILITY LOCATIONS SHALL BE MADE BY THE OWNER, UNLESS OTHERWISE NOTED.
7.

ADDITIONAL DEPTH REQUIRED IN DRAINAGE STRUCTURES DUE TO CONFLICTS WITH OTHER UTILITY LINES WILL BE CONSIDERED INCIDENTAL TO THE UNIT PRICE BID FOR THE DRAINAGE STRUCTURE AND NO ADDITIONAL COMPENSATION WILL BE ALLOWED.
8.

ANY REFERENCE TO A STANDARD IN THESE PLANS SHALL BE INTERPRETED TO MEAN THE EDITION, AS INDICATED BY THE SUB-NUMBER ON THE COVER SHEET.
9.

ALL DETAILS IN THESE PLANS SHALL GOVERN THE CONSTRUCTION OF THIS PROJECT, AND IN CASE OF CONFLICT WITH ANY STANDARD DRAWINGS INCLUDED, THE SAID DETAILS SHALL GOVERN.
10.

THE EXISTING ROAD SIGNS THAT INTERFERE WITH CONSTRUCTION SHALL BE REMOVED AND RELOCATED AS DIRECTED BY THE ENGINEER. THIS WORK WILL NOT BE PAID FOR SEPARATELY BUT SHALL BE CONSIDERED AS PART OF THE CONTRACT AND NO COMPENSATION WILL BE ALLOWED.
11.

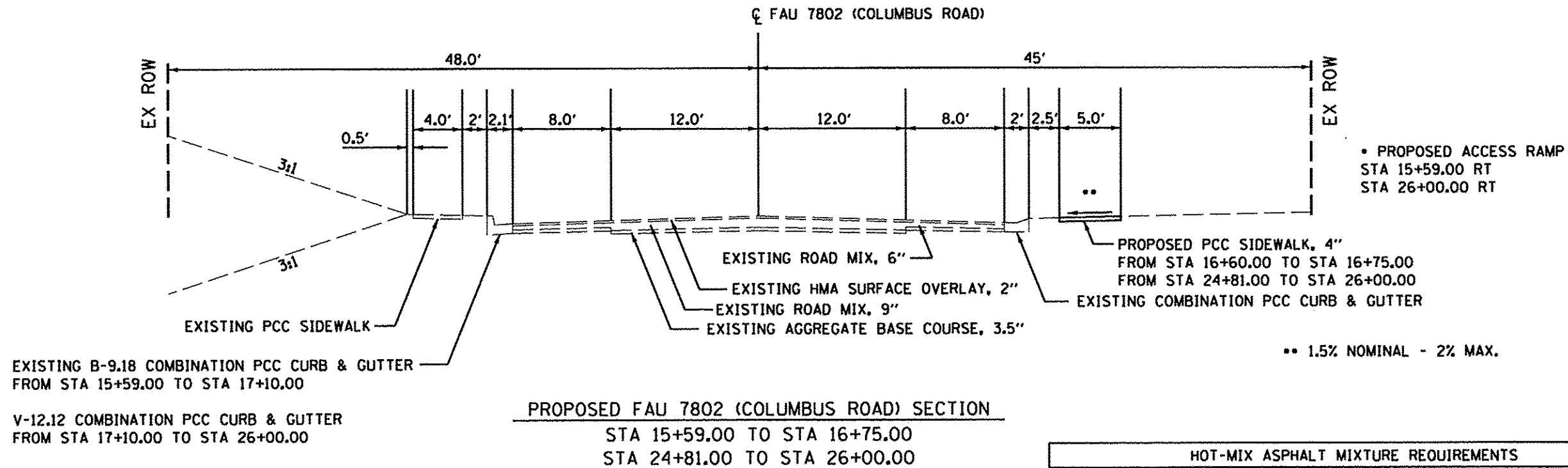
EXISTING MAILBOXES SHALL BE TEMPORARILY RELOCATED FOR CONTINUED OPERATION AS NECESSARY DURING CONSTRUCTION. MAIL BOXES SHALL BE RELOCATED TO THEIR FINAL LOCATION AFTER CONSTRUCTION AS DIRECTED BY THE ENGINEER. THIS WORK WILL NOT BE PAID FOR SEPARATELY BUT SHALL BE CONSIDERED AS PART OF THE CONTRACT AND NO COMPENSATION WILL BE ALLOWED.

RATES OF APPLICATION TABLE

AGGREGATE (SURFACE, BASE, OR BACKFILL)	2.05 TON/CU YD
SUBBASE GRANULAR MATERIAL, TYPE A	1.80 TON/CU YD
STONE DUMPED RIPRAP	1.5 TON/CU YD
BITUMINOUS CONCRETE:	
BITUMINOUS MATERIALS (PRIME COAT)	0.00038 TON/SQ YD (ON PAVEMENT)
BITUMINOUS MATERIALS (PRIME COAT)	0.001425 TON/SQ YD (ON AGGREGATE)
AGGREGATE PRIME COAT	0.002 TON/SQ YD
BITUMINOUS CONCRETE SURFACE / BINDER	112 LB/SQ YD/IN
SEEDING AREAS:	
NITROGEN FERTILIZER NUTRIENT	90 LBS/ACRE
PHOSPHOROUS FERTILIZER NUTRIENT	90 LBS/ACRE
POTASSIUM FERTILIZER NUTRIENT	90 LBS/ACRE
AGRICULTURAL GROUND LIMESTONE	2 TON/ACRE
MULCH	2 TON/ACRE
TEMPORARY EROSION CONTROL SEEDING	100 LBS/ACRE
SODDING AREAS:	
NITROGEN FERTILIZER NUTRIENT	0.186 LBS/SQ YD
PHOSPHOROUS FERTILIZER NUTRIENT	0.0011 LBS/SQ YD
POTASSIUM FERTILIZER NUTRIENT	0.0074 LBS/SQ YD
AGRICULTURAL GROUND LIMESTONE	0.000046 TON/SQ YD
SUPPLEMENTAL WATERING	0.009 UNITS/SQ YD (3 APPL. @ 3 GAL/SQ YD)
LIME FOR LIME MODIFIED SOILS, 12"	0.02 TON/SQ YD
WATER FOR LIME MODIFIED SOILS, 12"	0.007 UNITS/SQ YD (1 UNIT = 1000 GAL)

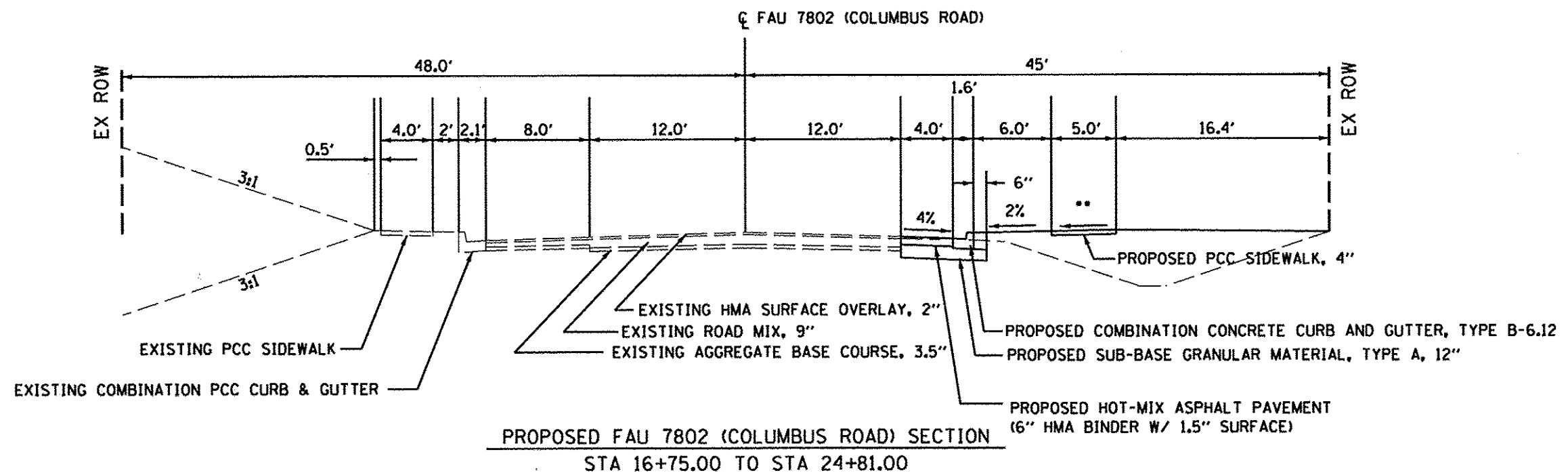
93611

FILE NAME *	USER NAME * BRIAN	DESIGNED - BMK	REVISED -	CITY OF QUINCY 730 MAINE STREET QUINCY, IL 62301	HIGHWAY STANDARDS AND GENERAL NOTES			F.A.U RTE.	SECTION	COUNTY	TOTAL SHEETS	SHEET NO.
GEN.NOTES.0900314.DGN		DRAWN - BMK	REVISED -					7802	09-00314-00-SW	ADAMS	28	2
	PLOT SCALE * 40.0000' / IN. (FS)	CHECKED -	REVISED -					CONTRACT NO.				
	PLOT DATE * #DATE#	DATE -	REVISED -		SCALE: None	SHEET NO. 1 OF 1	SHEETS	STA.	TO STA.	FED. ROAD DIST. NO. ILLINOIS FED. AID PROJECT		



HOT-MIX ASPHALT MIXTURE REQUIREMENTS			
ITEM	AGGREGATE COMPOSITION	ASPHALT GRADE	DESIGN AIR VOIDS
HMA BINDER	IL - 19.0	PG 64-22	4.0% @ N50
POLYMERIZED HMA SURFACE	IL - 9.5 MIX "C"	SBS PG 64-28	4.0% @ N50

- HOT-MIX ASPHALT QUANTITIES BASED ON 112 LB./SQ. YD./INCH



93611

FILE NAME *	USER NAME *	DESIGNED - BNK	REVISED -	CITY OF QUINCY 730 MAINE STREET QUINCY, IL 62301	PROPOSED TYPICAL SECTIONS		FAU RTE.	SECTION	COUNTY	TOTAL SHEETS	SHEET NO.
PRL_TYP_8980314.DGN		DRAWN - BNK	REVISED -				7802	09-00314-00-SW	ADAMS	28	5
PLOT SCALE * 5.0000' / IN. (FS)		CHECKED -	REVISED -		SCALE:		FED. ROAD DIST. NO. ILLINOIS FED. AID PROJECT				
PLOT DATE * 07/27/2011		DATE -	REVISED -		SHEET NO. 1 OF 1 SHEETS		CONTRACT NO.				

SCHEDULE OF QUANTITIES

CONSTRUCTION CODES

EARTHWORK EXCAVATION FURNISHED EXCAVATION		CU YD CU YD		20200100 20400800	
LOCATION STATION TO STATION	SIDE	EARTH EXCAVATION CU YD	EARTH EXCAVATION ADJUSTED 25% CU YD	EMBANKMENT CU YD	CUMMULATIVE EARTHWORK BALANCE CU YD
COLUMBUS RD					
16+50 TO 26+00	RT	367	276	386	(110)
ST. DOMINIC					
100+25 TO 105+00	LT	10	8	27	(19)
TOTALS		377	284	413	(129)
USE		377	284	413	

SIDEWALK SCHEDULE

LOCATION	SIDE	42400100 PORTLAND CEMENT CONCRETE SIDEWALK, 4"	42400800 DETECTABLE WARNINGS
		SQ FT	SQ FT
SW CORNER - COLUMBUS RD & PINE RIDGE	RT	46.4	8.0
SE CORNER - COLUMBUS RD & PINE RIDGE	RT	37.8	8.0
COLUMBUS RD - 16+57.48 TO 16+62.47	RT	19.3	
WEST SIDE - MAIN ENTRANCE		66.9	8.0
EAST SIDE - MAIN ENTRANCE		248.6	26.7
COLUMBUS RD - 17+38.28 TO 17+58.28	LT	108.9	16.0
COLUMBUS RD - 17+61.60 TO 23+20.46	RT	2809.9	
WEST SIDE - EAST ENTRANCE		39.3	10.0
EAST SIDE - EAST ENTRANCE		67.3	10.0
COLUMBUS RD - 23+59.91 TO 23+87.75	RT	143.2	
COLUMBUS RD - 24+05.99 TO 25+93.17	RT	937.6	
SW CORNER - COLUMBUS RD & CHESHIRE BLVD	RT	75.5	10.0
SE CORNER - COLUMBUS RD & CHESHIRE BLVD	RT	69.4	10.0
ST. DOMINIC SIDEWALK - 100+40.64 TO 104+25.02	LT	2020.2	10.0
ST. DOMINIC SIDEWALK - 104+49.65 TO 105+03.74	LT	266.7	10.0
TOTAL		6957.0	127.0

UTILITY ADJUSTMENT SCHEDULE

LOCATION	56500600 DOMESTIC WATER SERVICE BOXES TO BE ADJUSTED	Z0001110 GAS VALVE TO BE ADJUSTED	60255500 MANHOLES TO BE ADJUSTED	60260100 INLETS TO BE ADJUSTED
COLUMBUS ROAD	EACH	EACH	EACH	EACH
STA 16+89.10, 29.30' RT			1.0	
STA 17+42.97, 24.32' RT		1.0		
STA 23+77.00, 32.91' RT	1.0			
STA 24+93.96, 21.71' RT				1.0
TOTAL	1.0	1.0	1.0	1.0

PAVING SCHEDULE

LOCATION		31100100 SUBBASE GRANULAR MATERIAL	40600200 BITUMINOUS MATERIALS (PRIME COAT)	40603080 HOT-MIX ASPHALT BINDER COURSE, IL 19.0, N50	40603510 POLYMERIZED HOT-MIX ASPHALT SURFACE COURSE, MIX "C", N50	44000100 PAVEMENT REMOVAL
		TON	TON	TON	TON	SQ YD
COLUMBUS RD	16+52.46 TO 24+83.47	441.2	0.6	136.1	34.0	345.7
TOTAL		442.0	0.6	137.0	34.0	346.0

ENTRANCE SCHEDULE

TYPE & LOCATION	LENGTH	WIDTH	W. RADIUS	E. RADIUS	31100100 SUBBASE GRANULAR MATERIAL	42300200 PORTLAND CEMENT CONCRETE DRIVEWAY PAVEMENT, 6"	42300400 PORTLAND CEMENT CONCRETE DRIVEWAY PAVEMENT, 8"
					TON	SQ YD	SQ YD
CE - 17+14.96 RT	26.0	40.7	24.5	34.0	34.5		151.6
PE - 23+39.30 RT	26.4	22.0	5' FLARE	5' FLARE	14.1	61.6	
PE - 23+97.01 RT	24.9	17.0	5' FLARE	5' FLARE	11.7	51.2	
TOTAL					61.0	113.0	152.0

SEEDING SCHEDULE

LOCATION		25000100 SEEDING, CLASS 1	25000400 NITROGEN FERTILIZER NUTRIENT	25000500 PHOSPHOROUS FERTILIZER NUTRIENT	25000600 POTASSIUM FERTILIZER NUTRIENT	25100105 MULCH, METHOD 1
		ACRE	POUND	POUND	POUND	ACRE
SW CORNER - COLUMBUS RD & PINE RIDGE	RT	0.001	0.09	0.09	0.09	0.001
SE CORNER - COLUMBUS RD & PINE RIDGE	RT	0.001	0.09	0.09	0.09	0.001
COLUMBUS RD - 16+52.47 TO 25+93.18	RT	0.34	30.6	30.6	30.6	0.34
COLUMBUS RD - 17+38.29 TO 17+58.29	LT	0.002	0.18	0.18	0.18	0.002
SW CORNER - COLUMBUS RD & CHESHIRE BLVD	RT	0.005	0.45	0.45	0.45	0.005
SE CORNER - COLUMBUS RD & CHESHIRE BLVD	RT	0.002	0.18	0.18	0.18	0.002
ST. DOMINIC SIDEWALK	LT	0.13	11.7	11.7	11.7	0.13
TOTAL	CUT	0.5	45	45	45	0.5

STORM SEWER SCHEDULE

LOCATION	20800150 TRENCH BACKFILL	550B0050 STORM SEWERS, CLASS B, TYPE 1, 12"	60107700 PIPE UNDERDRAINS, 6"	60236200 INLETS, TYPE A, TYPE B GRATE	X0326820 INLETS, SPECIAL, TYPE E, 4' X 4'	X0326822 INLETS, SPECIAL, TYPE E, 4' X 6'
COLUMBUS ROAD	CU YD	FOOT	FOOT	EACH	EACH	EACH
STA 16+64.95, 20.68' RT						1.0
STA 21+00.95, 16.63' RT					1.0	
STA 23+53.08 TO 23+73.15			26.0			
STA 23+75.13, 16.63' RT					1.0	
STA 23+77.30 TO 24+51.71	36.5	74.4				
STA 24+25.05, 42.7' RT				1.0		
STA 24+51.61 TO 24+51.61			26.6			
STA 24+53.85, 20.56' RT						1.0
TOTAL	37.0	75.0	53.0	1.0	2.0	2.0

SCHEDULE OF QUANTITIES

CONSTRUCTION CODES

REMOVAL SCHEDULE

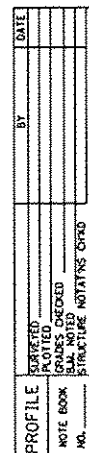
LOCATION	SIDE	44000500	44000600	44000200	50105220	55100500	55100900	60500060
		COMBINATION CURB & GUTTER REMOVAL	SIDEWALK REMOVAL	DRIVEWAY PAVEMENT REMOVAL	PIPE CULVERT REMOVAL	STORM SEWER REMOVAL, 12"	STORM SEWER REMOVAL, 18"	REMOVING INLETS
COLUMBUS ROAD		FOOT	SQ FT	SQ YD	FOOT	FOOT	FOOT	EACH
SW CORNER - COLUMBUS RD & PINE RIDGE	RT	11.3	37.2					
SE CORNER - COLUMBUS RD & PINE RIDGE	RT	8.3	29.7					
STA 16+52.47 TO 16+82.84	RT	30.4						
STA 16+57.48 TO 16+67.97	RT		40.1					
STA 16+62.89 TO 16+79.51	RT					16.6		
STA 16+79.57 TO 17+42.95	RT				63.4			
MAIN ENTRANCE	RT			130.1				
STA 17+38.28 TO 17+58.28	LT	12.0	73.5					
STA 21+00.95	RT						8.4	
STA 23+39.30	RT			95.0				
STA 23+97.01	RT			40.1	20.4			
STA 24+53.85, 20.56' RT								1.0
SW CORNER - COLUMBUS RD & CHESHIRE BLVD	RT	6.6						
SE CORNER - COLUMBUS RD & CHESHIRE BLVD	RT	6.5						
ST. DOMINIC SIDEWALK								
STA 104+94.28 TO 105+02.51	LT		25.0					
	TOTAL	76.0	206.0	265.2	84.0	16.6	8.4	1.0
	USE	76.0	206.0	266.0	84.0	17.0	9.0	1.0

PAVEMENT MARKING SCHEDULE

LOCATION	78001100	78001120	78001130	78001150	78001180
	PAINT PAVEMENT MARKING - LETTERS & SYMBOLS	PAINT PAVEMENT MARKING - LINE 5"	PAINT PAVEMENT MARKING - LINE 6"	PAINT PAVEMENT MARKING - LINE 12"	PAINT PAVEMENT MARKING - LINE 24"
COLUMBUS ROAD	SQ FT	SQ FT	FOOT	FOOT	FOOT
MAIN ENTRANCE	31.2	25.0	121.6	108.0	26.6
ST. DOMINIC SIDEWALK					
STA 104+24.41 TO 104+51.56				57.0	
TOTAL	32.0	25.0	122.0	165.0	27.0

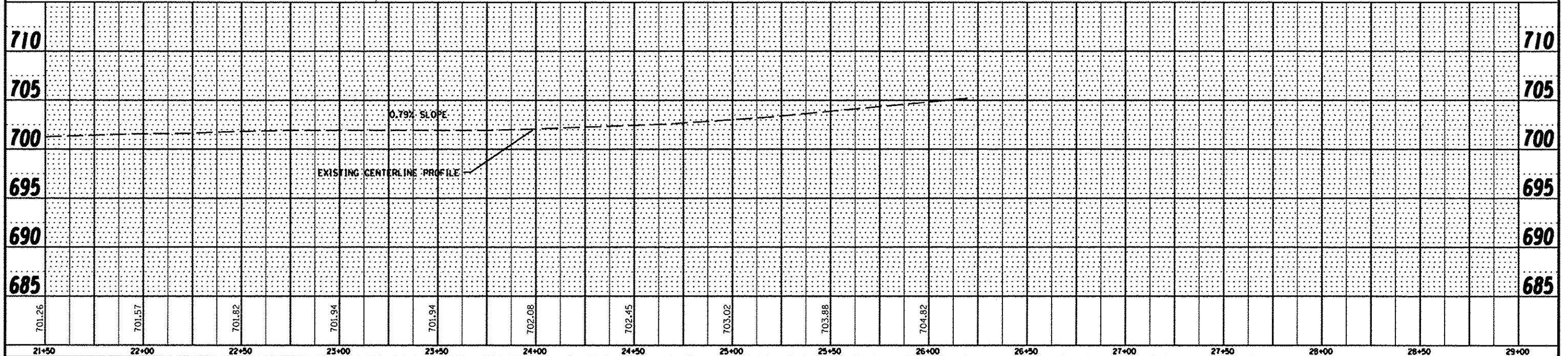
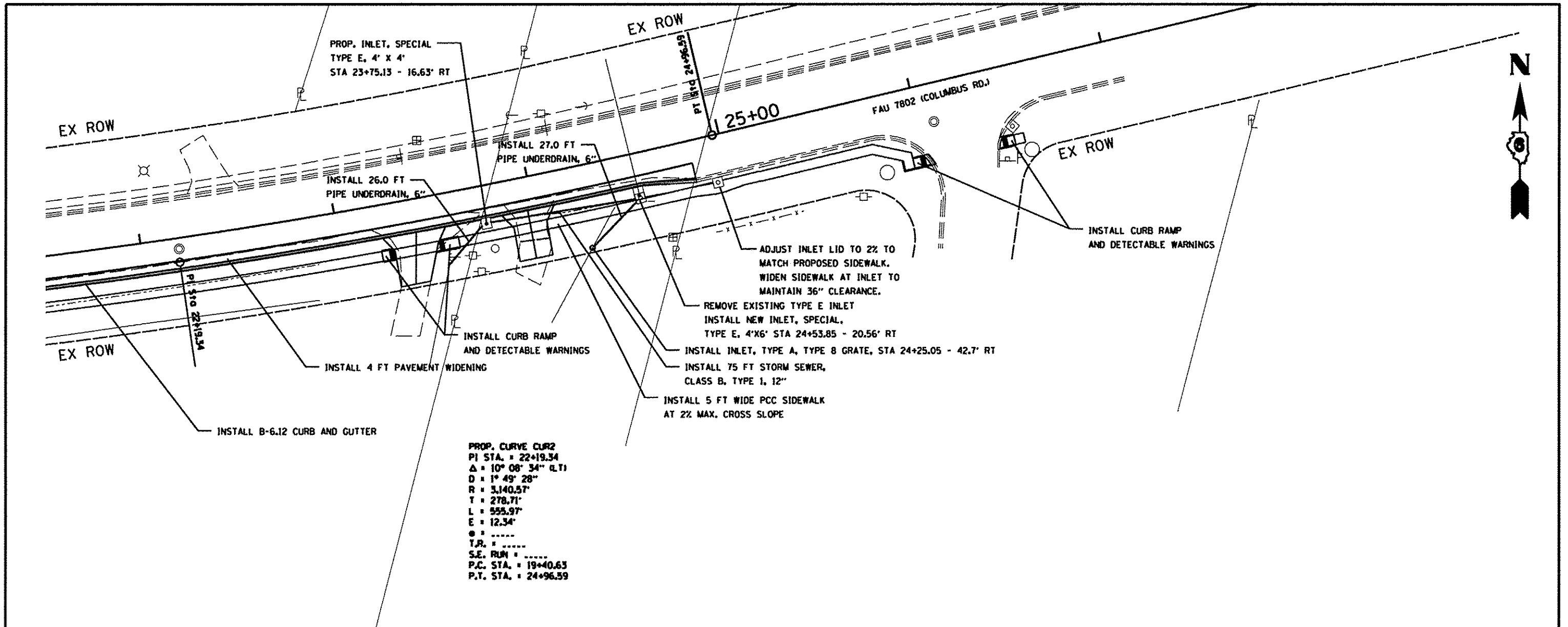
CURB & GUTTER SCHEDULE

LOCATION	SIDE	60600605	60603800	X6060074
		CONCRETE CURB, TYPE B	COMBINATION CONCRETE CURB & GUTTER, TYPE B-6.12	COMBINATION CONCRETE CURB & GUTTER, TYPE M, (SPECIAL) (ABUTTING EXISTING PAVEMENT)
COLUMBUS ROAD		FOOT	FOOT	FOOT
SW CORNER - COLUMBUS RD & PINE RIDGE	RT			11.3
SE CORNER - COLUMBUS RD & PINE RIDGE	RT			8.3
WEST SIDE - MAIN ENTRANCE		29.6		
EAST SIDE - MAIN ENTRANCE		35.9		
COLUMBUS RD - 17+42.28 TO 17+54.28	LT			12.0
COLUMBUS RD - 16+52.47 TO 24+83.46	RT		834.2	
SW CORNER - COLUMBUS RD & CHESHIRE BLVD	RT			6.6
SE CORNER - COLUMBUS RD & CHESHIRE BLVD	RT			6.5
	COLUMBUS ROAD	66.0	835.0	45.0



PLAN	DATE
DESIGNED	
DRAWN	
CHECKED	
DATE	
BY	
NO.	
FILE NAME	

PROFILE	DATE
DESIGNED	
DRAWN	
CHECKED	
DATE	
BY	
NO.	
FILE NAME	

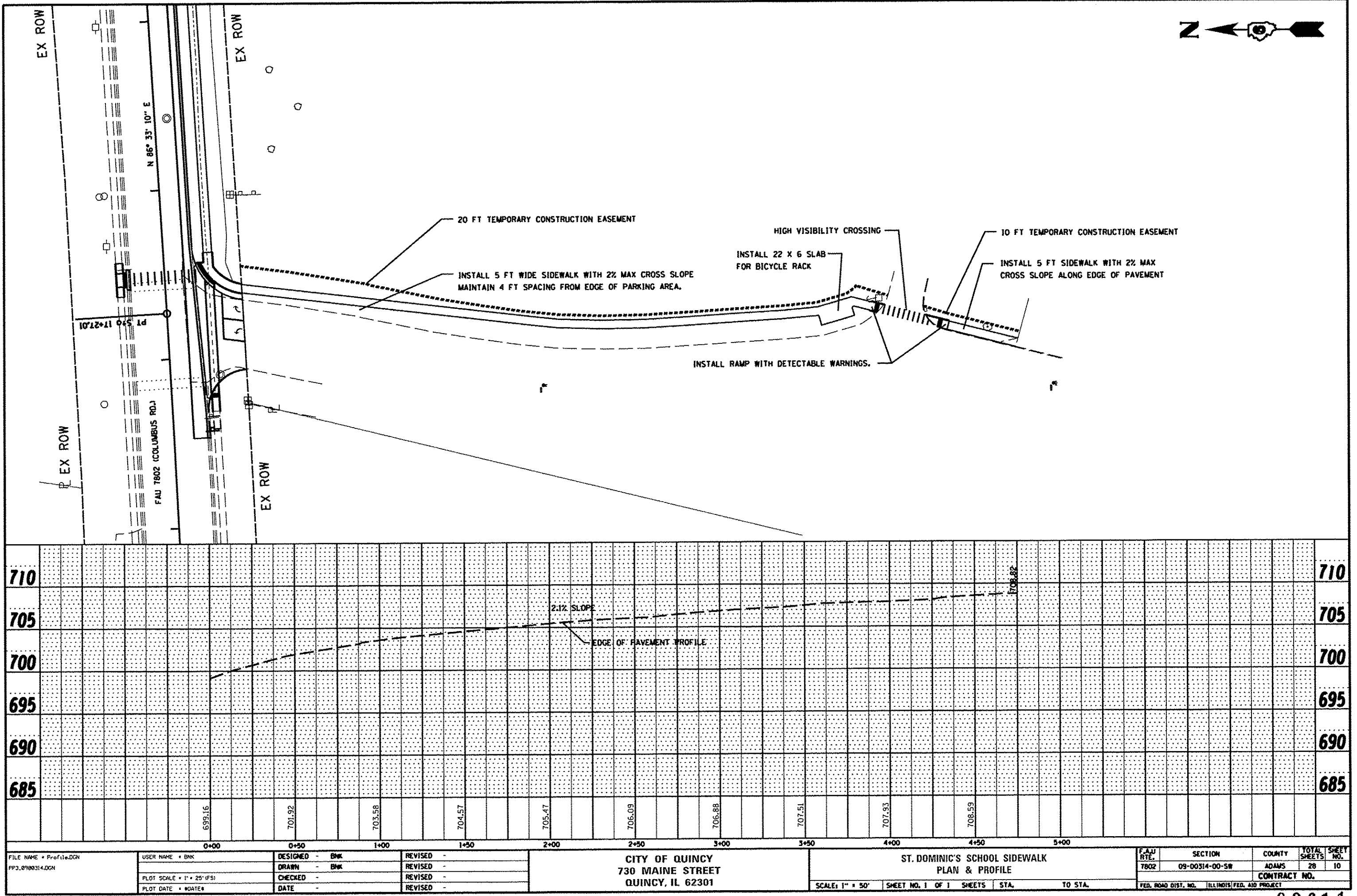


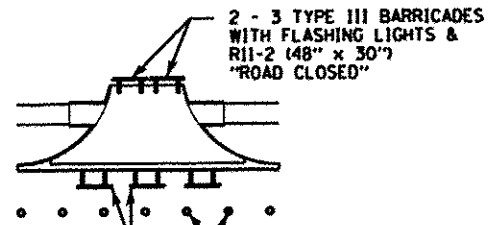
FILE NAME = Profile.DGN	USER NAME = BAK	DESIGNED - BAK	REVISED -	CITY OF QUINCY 730 MAINE STREET QUINCY, IL 62301	FAU 7802 (COLUMBUS ROAD) PLAN & PROFILE	SCALE: 1" = 50'	SHEET NO. 2 OF 2 SHEETS	STA. TO STA.	FAU RTE.	SECTION	COUNTY	TOTAL SHEETS	SHEET NO.
PP2.0900314.DGN		DRAWN - BAK	REVISED -						7802	09-00314-00-SW	ADAMS	28	9
		CHECKED -	REVISED -										
		DATE -	REVISED -										
									FED. ROAD DIST. NO.	ILLINOIS FED. AID PROJECT			

03011

PLAN	DATE
BY	
REVISION	
NO.	
NOTE	
BOOK	
NO.	
FILE NAME	

PROFILE	DATE
BY	
REVISION	
NO.	
NOTE	
BOOK	
NO.	
FILE NAME	





3 - 4 TYPE III BARRICADES WITH FLASHING LIGHTS & R11-2 (48\"/>

DECREASE DRUM OR BARRICADE SPACING TO 10' IN FRONT OF ENTRANCE

ENTRANCE CLOSURE DETAIL

COST OF ENTRANCE CLOSURE INCLUDED IN THE PAY ITEM "TRAFFIC CONTROL AND PROTECTION, STANDARD 701606, SPECIAL"

NOTES:

- 1 ONLY ONE ENTRANCE MAY BE CLOSED AT A TIME.
2. CONES IN STANDARD 701606 WILL NOT BE ALLOWED.

- 1 Refer to SIGN SPACING TABLE for distances.
- 2 Drums or barricades at 25' (8 m) centers for 250' (75 m). Additional drums or barricades shall be placed at 50' (15 m) centers.
- 3 Drums or barricades at 20' (6 m) centers in taper.

Posted Speed	Sign Spacing
55	500' (150 m)
50 - 45	350' (100 m)
<45	200' (60 m)

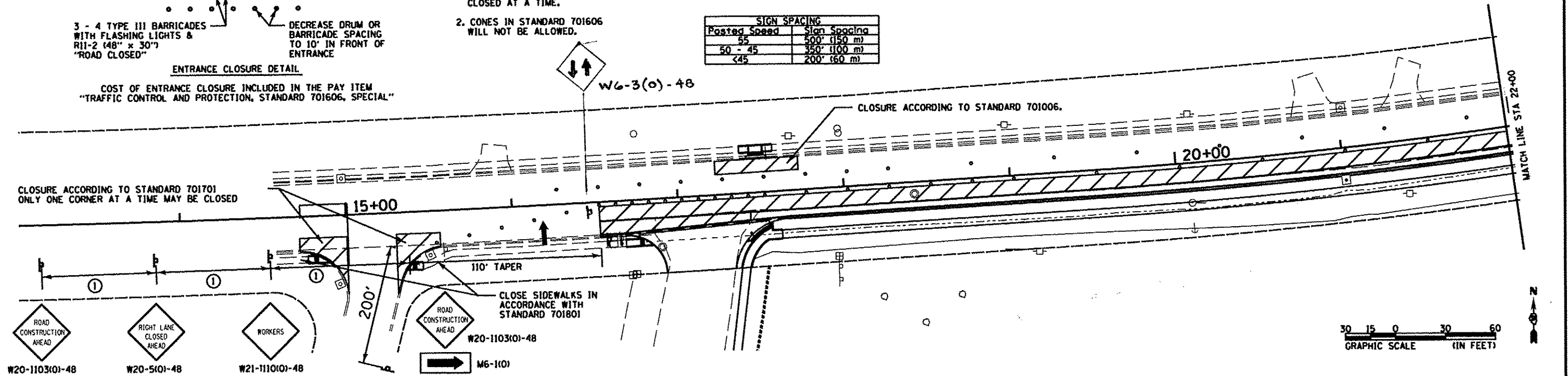
SYMBOLS

- ↑ Arrow board
- Drum or barricade with flashing light
- Sign on portable or permanent support
- ▨ Work area

Refer to SIGN SPACING TABLE for distances.

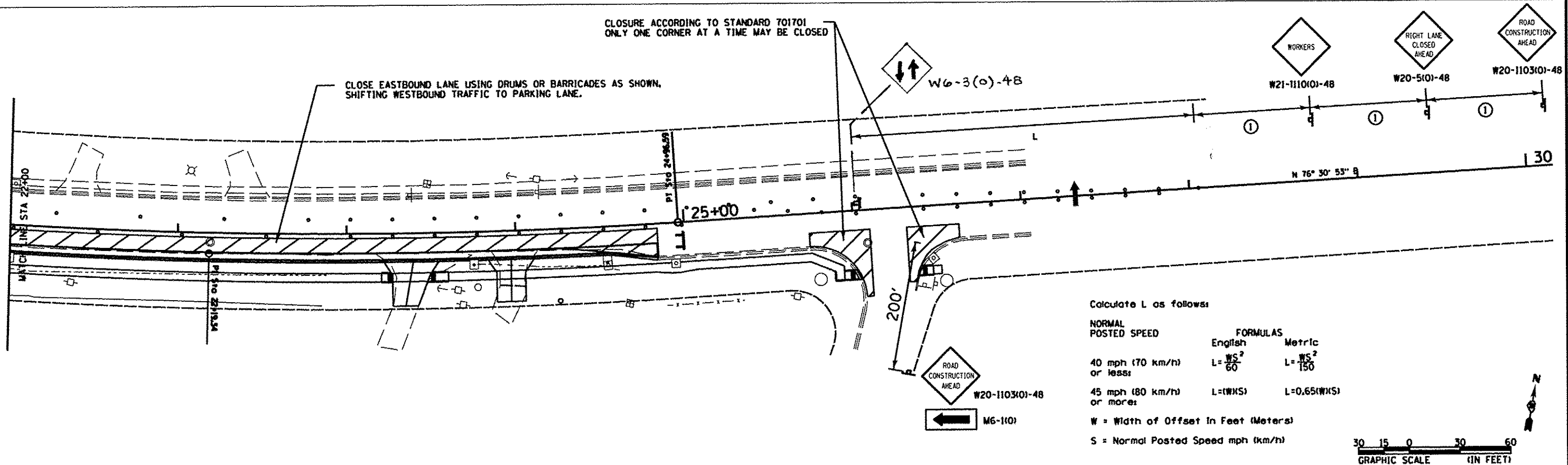
Drums or barricades at 25' (8 m) centers for 250' (75 m). Additional drums or barricades shall be placed at 50' (15 m) centers.

Drums or barricades at 20' (6 m) centers in taper.



CLOSURE ACCORDING TO STANDARD 701701 ONLY ONE CORNER AT A TIME MAY BE CLOSED

CLOSE EASTBOUND LANE USING DRUMS OR BARRICADES AS SHOWN, SHIFTING WESTBOUND TRAFFIC TO PARKING LANE.



Calculate L as follows:

NORMAL POSTED SPEED

FORMULAS

40 mph (70 km/h) or less:

English $L = \frac{WS^2}{60}$ Metric $L = \frac{WS^2}{150}$

45 mph (80 km/h) or more:

English $L = (WHS)$ Metric $L = 0.65(WHS)$

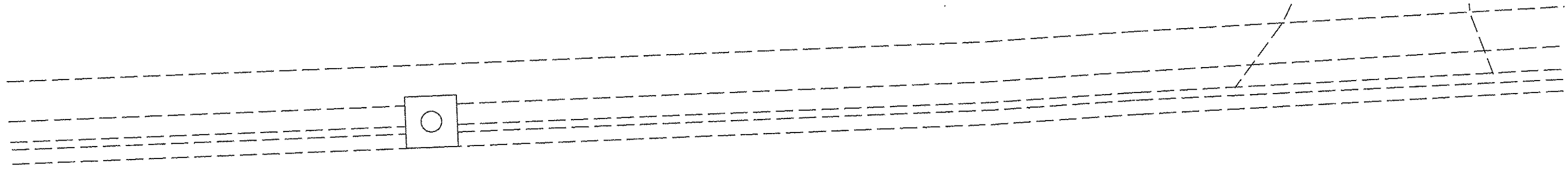
W = Width of Offset in Feet (Meters)

S = Normal Posted Speed mph (km/h)



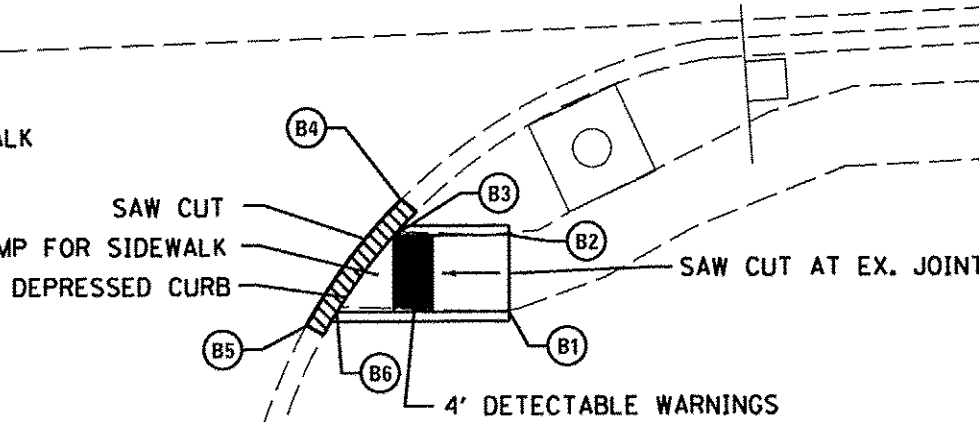
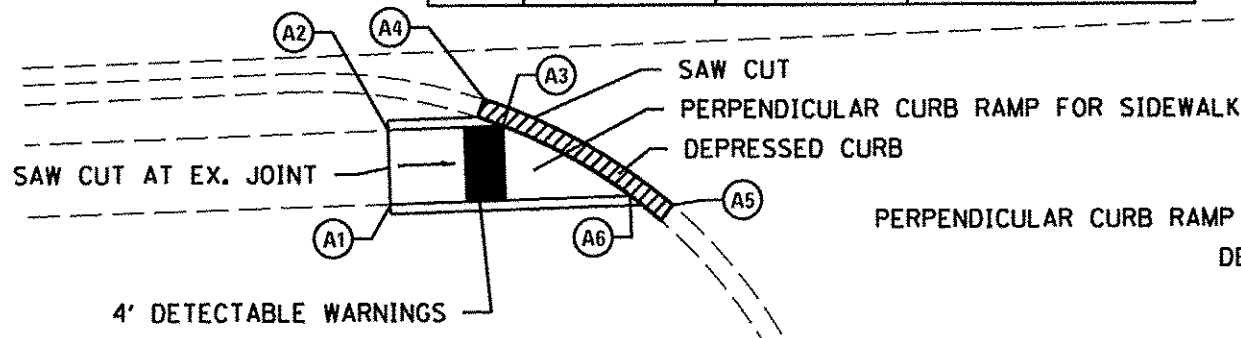
FILE NAME *	USER NAME * BNK	DESIGNED - BNK	REVISED -	CITY OF QUINCY 730 MAINE STREET QUINCY, IL 62301	FAU 7802 (COLUMBUS ROAD) TRAFFIC CONTROL DETAILS STANDARD 701606, SPECIAL	FAU RTE.	SECTION	COUNTY	TOTAL SHEETS	SHEET NO.		
TC-1.0908314.DGN		DRAWN - BNK	REVISED -									
	PLOT SCALE * 1" = 38' (F)	CHECKED -	REVISED -									
	PLOT DATE * *DATE*	DATE -	REVISED -									
						SCALE:	SHEET NO. 1 OF 1 SHEETS	STA.	TO STA.		FED. ROAD DIST. NO.	ILLINOIS FED. AID PROJECT
											CONTRACT NO.	

93611

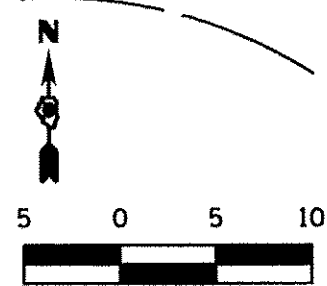


15+00

COLUMBUS RD			
POINT	STATION	OFFSET	ELEVATION
A1	14+76.48	27.97' RT	MATCH EXISTING
A2	14+76.49	23.97' RT	MATCH EXISTING
A3	14+82.50	23.99' RT	695.93
A4	14+81.58	22.67' RT	MATCH EXISTING
A5	14+91.14	28.57' RT	MATCH EXISTING
A6	14+88.96	28.01' RT	696.00



COLUMBUS RD			
POINT	STATION	OFFSET	ELEVATION
B1	15+45.19	34.89' RT	MATCH EXISTING
B2	15+45.36	30.89' RT	MATCH EXISTING
B3	15+39.38	30.64' RT	696.17
B4	15+39.84	28.80' RT	MATCH EXISTING
B5	15+34.64	35.16' RT	MATCH EXISTING
B6	15+36.24	34.52' RT	696.24



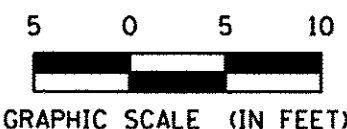
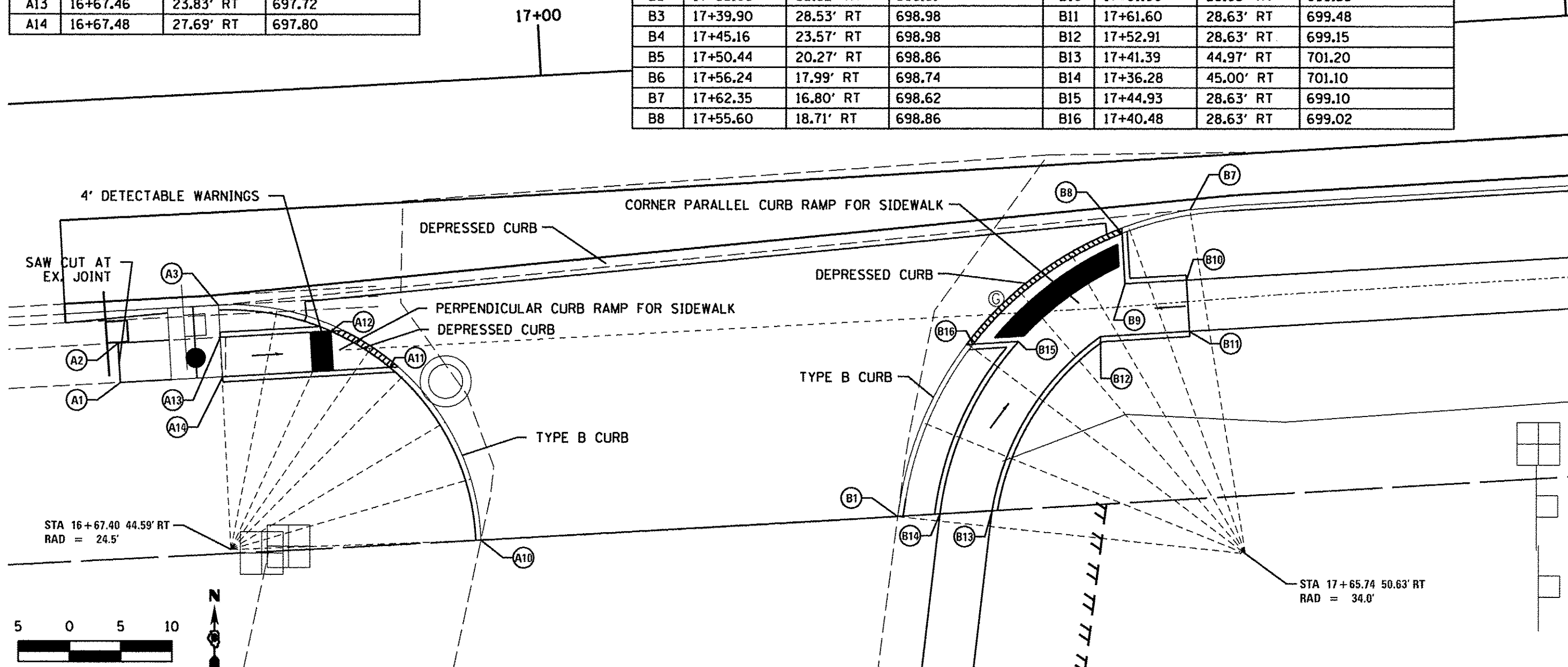
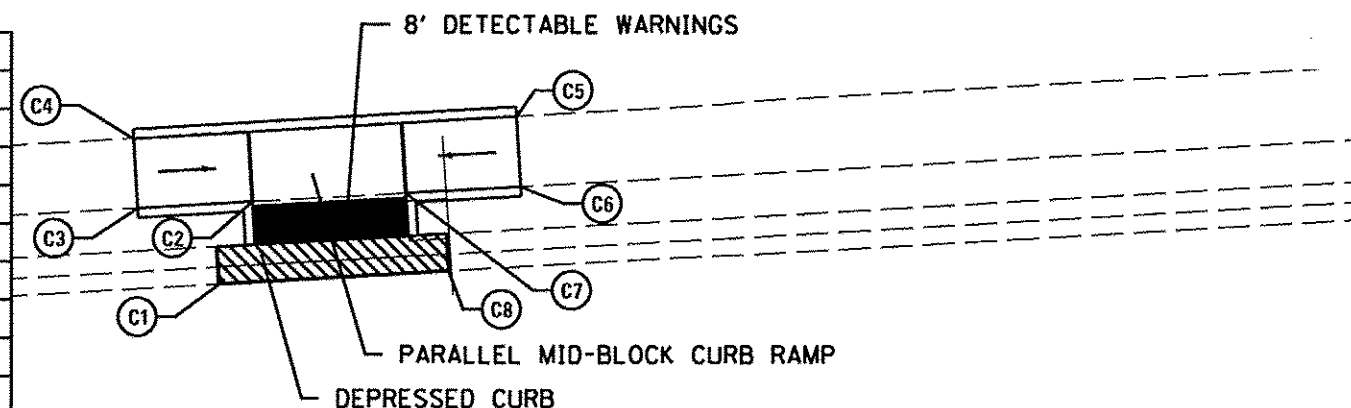
GRAPHIC SCALE (IN FEET)

93611

COLUMBUS RD			
POINT	STATION	OFFSET	ELEVATION
A1	16+57.50	27.73' RT	MATCH EXISTING
A2	16+57.48	23.88' RT	MATCH EXISTING
A3	16+67.44	20.67' RT	697.17
A4	16+73.15	21.34' RT	697.45
A5	16+78.53	23.30' RT	697.72
A6	16+82.12	25.52' RT	697.84
A7	16+85.25	28.31' RT	697.95
A8	16+88.84	33.26' RT	698.53
A9	16+91.04	38.95' RT	699.10
A10	16+91.70	45.00' RT	699.67
A11	16+83.75	27.64' RT	697.99
A12	16+78.24	23.79' RT	697.76
A13	16+67.46	23.83' RT	697.72
A14	16+67.48	27.69' RT	697.80

COLUMBUS RD			
POINT	STATION	OFFSET	ELEVATION
C1	17+42.28	20.37' LT	MATCH EXISTING
C2	17+44.28	24.58' LT	698.42
C3	17+38.28	24.60' LT	MATCH EXISTING
C4	17+38.28	28.60' LT	MATCH EXISTING
C5	17+58.28	28.53' LT	MATCH EXISTING
C6	17+58.28	24.53' LT	MATCH EXISTING
C7	17+52.28	24.55' LT	698.55
C8	17+54.28	20.35' LT	MATCH EXISTING

COLUMBUS RD							
POINT	STATION	OFFSET	ELEVATION	POINT	STATION	OFFSET	ELEVATION
B1	17+32.16	45.00' RT	700.64	B9	17+55.60	23.63' RT	698.96
B2	17+35.09	35.92' RT	699.81	B10	17+61.60	23.63' RT	699.38
B3	17+39.90	28.53' RT	698.98	B11	17+61.60	28.63' RT	699.48
B4	17+45.16	23.57' RT	698.98	B12	17+52.91	28.63' RT	699.15
B5	17+50.44	20.27' RT	698.86	B13	17+41.39	44.97' RT	701.20
B6	17+56.24	17.99' RT	698.74	B14	17+36.28	45.00' RT	701.10
B7	17+62.35	16.80' RT	698.62	B15	17+44.93	28.63' RT	699.10
B8	17+55.60	18.71' RT	698.86	B16	17+40.48	28.63' RT	699.02

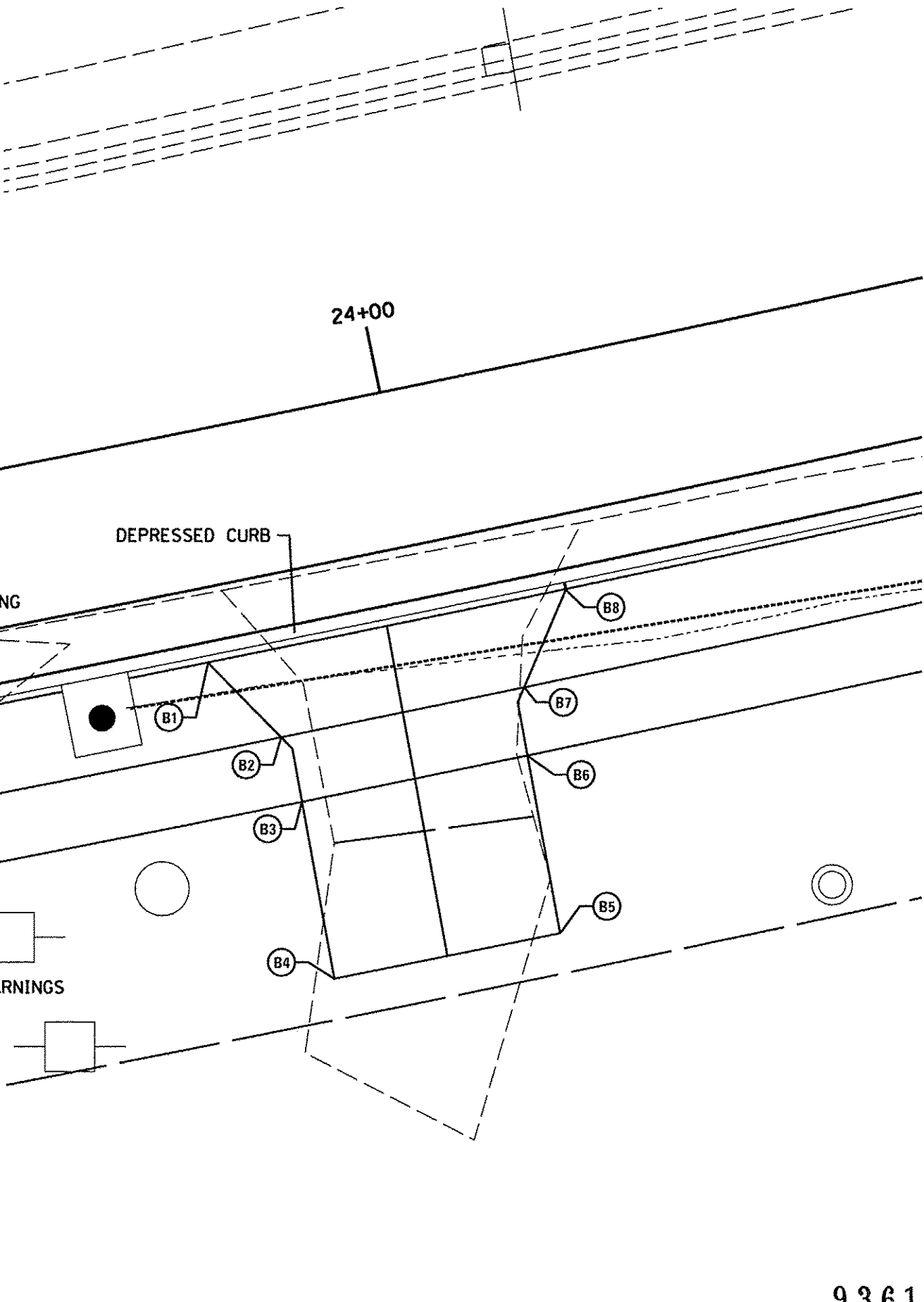


FILE NAME INT_DET_0900314.DGN	USER NAME BNK	DESIGNED BNK	REVISED -	CITY OF QUINCY 730 MAINE STREET QUINCY, IL 62301	INTERSECTION DETAILS ST. DOMINIC'S SCHOOL MAIN ENTRANCE	F.A.U. RTE.	SECTION	COUNTY	TOTAL SHEETS	SHEET NO.
PLOT SCALE 1" = 5' (FS)	CHECKED -	REVISED -	7802			09-00314-00-SW	ADAMS	28	13	
PLOT DATE - DATE -	DATE -	REVISED -	CONTRACT NO.							
SCALE:						SHEET NO. 2 OF 4 SHEETS		STA. TO STA.		FED. ROAD DIST. NO. ILLINOIS FED. AID PROJECT

93611

COLUMBUS RD			
POINT	STATION	OFFSET	ELEVATION
A1	23+22.10	17.15' RT	701.75
A2	23+26.42	23.63' RT	702.39
A3	23+20.46	23.63' RT	702.31
A4	23+20.47	28.63' RT	702.41
A5	23+27.08	28.63' RT	702.49
A6	23+27.08	43.19' RT	MATCH EXISTING
A7	23+42.05	43.10' RT	MATCH EXISTING
A8	23+47.73	28.63' RT	701.44
A9	23+59.89	28.63' RT	702.30
A10	23+59.89	23.63' RT	702.20
A11	23+49.98	23.63' RT	701.34
A12	23+54.34	17.10' RT	701.70

COLUMBUS RD			
POINT	STATION	OFFSET	ELEVATION
B1	23+83.57	17.13' RT	701.60
B2	23+87.75	23.63' RT	701.73
B3	23+88.32	28.63' RT	701.83
B4	23+88.06	41.98' RT	MATCH EXISTING
B5	24+04.88	42.02' RT	MATCH EXISTING
B6	24+05.20	28.63' RT	702.03
B7	24+05.99	23.63' RT	701.93
B8	24+10.46	17.20' RT	701.69



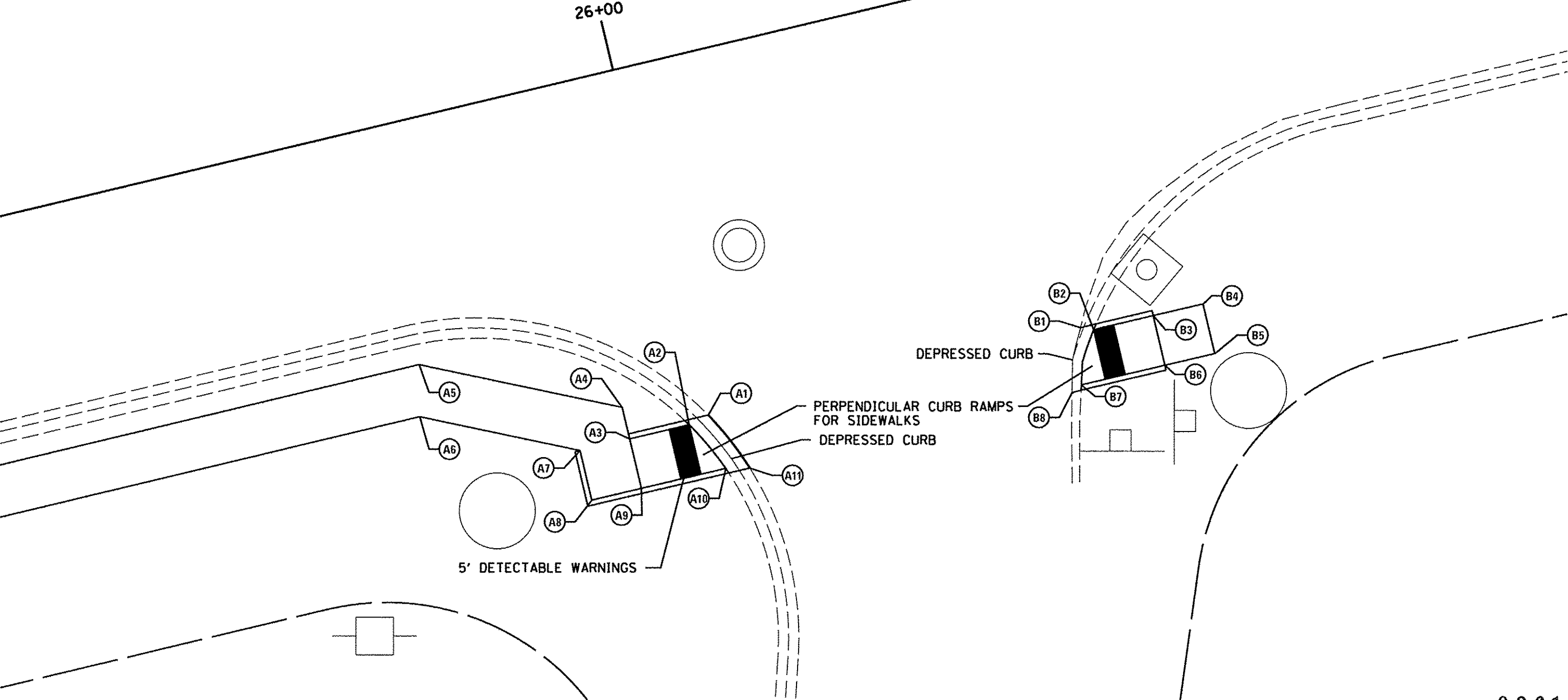
GRAPHIC SCALE (IN FEET)

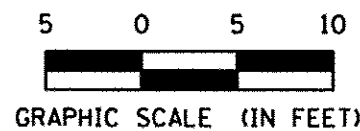
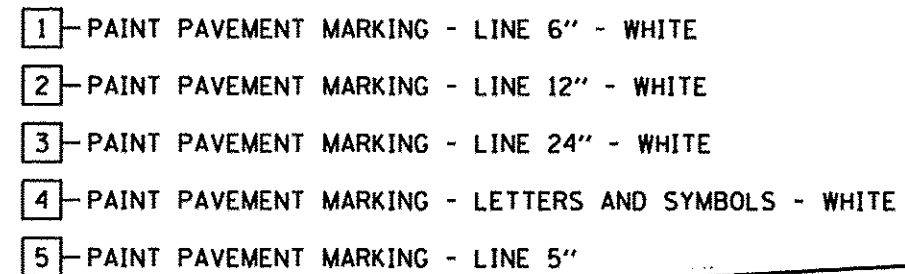
93611

FILE NAME * INT_DET_0900314.DGN	USER NAME * BNK	DESIGNED - BNK	REVISED -	CITY OF QUINCY 730 MAINE STREET QUINCY, IL 62301	INTERSECTION DETAILS ST. DOMINIC EAST ENTRANCE & AMEREN DRIVEWAY		F.A.U. RTE.	SECTION	COUNTY	TOTAL SHEETS	SHEET NO.
		DRAWN - BNK	REVISED -				7802	09-00314-00-SW	ADAMS	28	14
		CHECKED -	REVISED -				CONTRACT NO.				
		DATE -	REVISED -				FED. ROAD DIST. NO. (ILLINOIS) FED. AID PROJECT				
PLOT SCALE = 1" = 5' (FS)		PLOT DATE = 08/04/09		SCALE:		SHEET NO. 3 OF 4 SHEETS		STA. TO STA.			

COLUMBUS RD			
POINT	STATION	OFFSET	ELEVATION
A1	26+01.21	35.12' RT	MATCH EXISTING
A2	25+99.17	35.61' RT	704.72
A3	25+93.17	35.59' RT	704.75
A4	25+93.18	32.42' RT	704.65
A5	25+74.80	23.69' RT	704.00
A6	25+73.67	28.69' RT	704.10
A7	25+88.17	35.58' RT	704.65
A8	25+88.16	40.58' RT	704.75
A9	25+93.16	40.59' RT	704.75
A10	26+01.66	40.62' RT	704.92
A11	26+03.97	41.12' RT	MATCH EXISTING

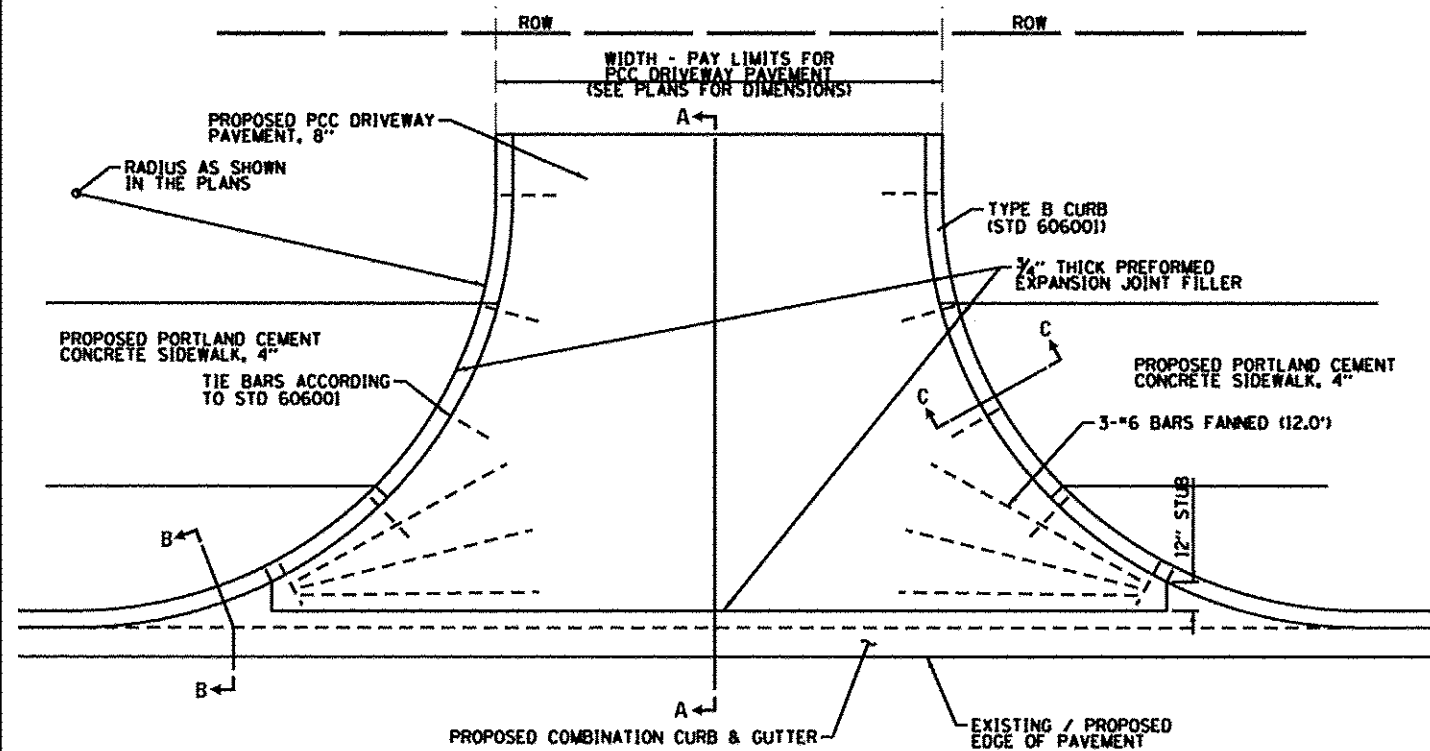
COLUMBUS RD			
POINT	STATION	OFFSET	ELEVATION
B1	26+38.69	35.24' RT	704.87
B2	26+39.88	35.73' RT	705.00
B3	26+45.88	35.75' RT	705.50
B4	26+50.88	35.76' RT	705.60
B5	26+50.87	40.76' RT	705.60
B6	26+45.87	40.75' RT	705.50
B7	26+37.45	40.72' RT	705.18
B8	26+36.39	41.22' RT	705.05



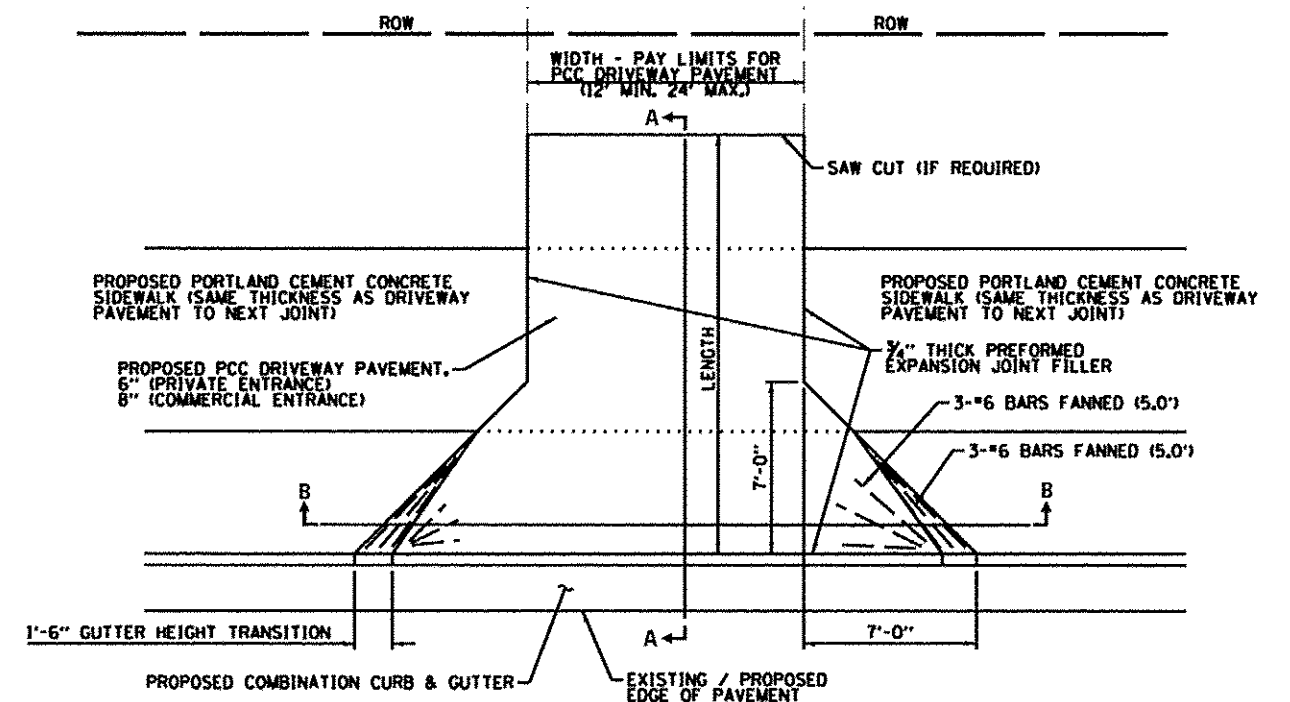


93611

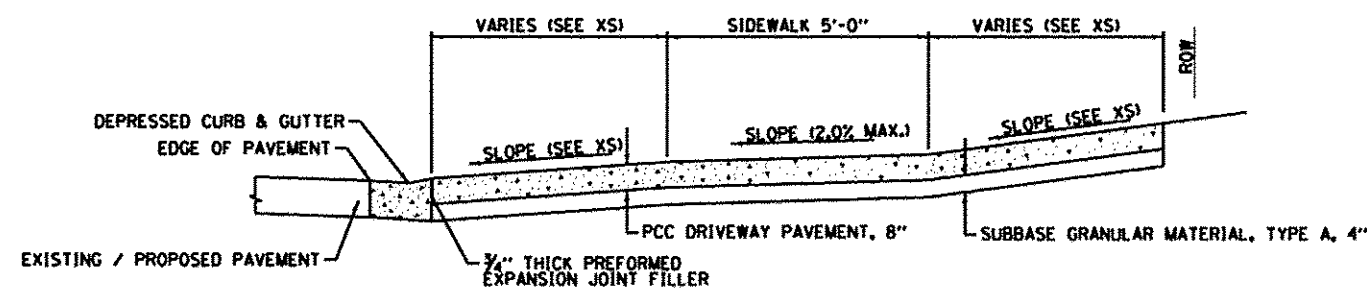
FILE NAME * PML_0908314.DGN	USER NAME * BAK	DESIGNED - BAK	REVISED -	CITY OF QUINCY 730 MAINE STREET QUINCY, IL 62301	PAVEMENT MARKING PLAN COLUMBUS ROAD & ST. DOMINIC'S MAIN ENTRANCE					F.A.I. RTE.	SECTION	COUNTY	TOTAL SHEETS	SHEET NO.
		DRAWN - BAK	REVISED -							7802	09-00314-00-SW	ADAMS	28	16
	PLOT SCALE * 1" = 5' (FSI)	CHECKED -	REVISED -		CONTRACT NO.									
	PLOT DATE * @DATE@	DATE -	REVISED -		SCALE:	SHEET NO.	OF	SHEETS	STA.	TO STA.	FED. ROAD DIST. NO.	ILLINOIS FED. AID PROJECT		



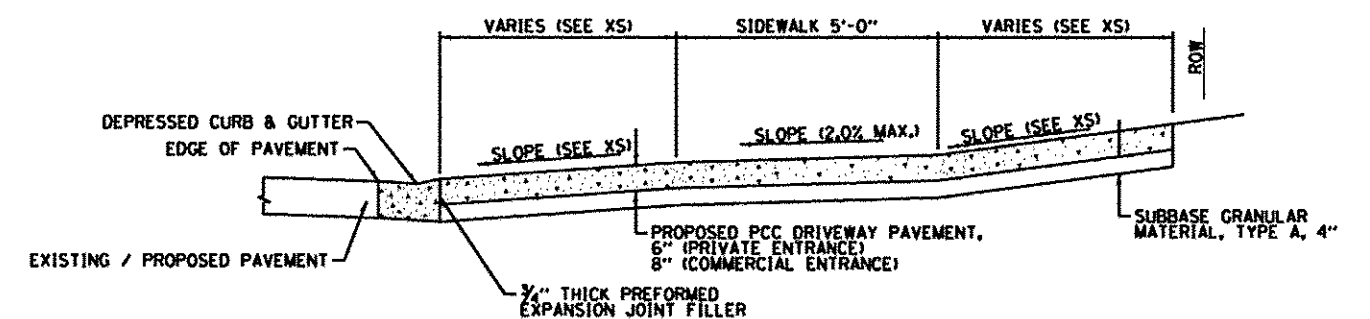
PLAN - ENTRANCE WITH CURB



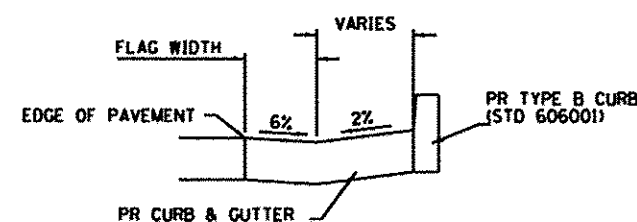
PLAN - ENTRANCE WITHOUT CURB



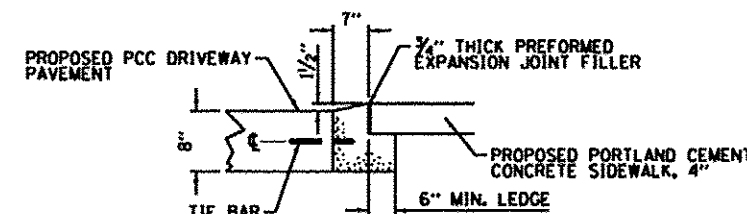
SECTION A-A



SECTION A-A



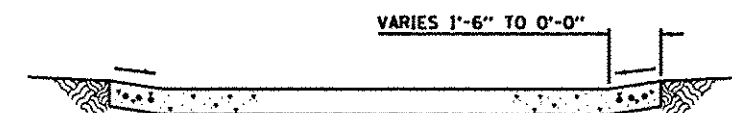
SECTION B-B



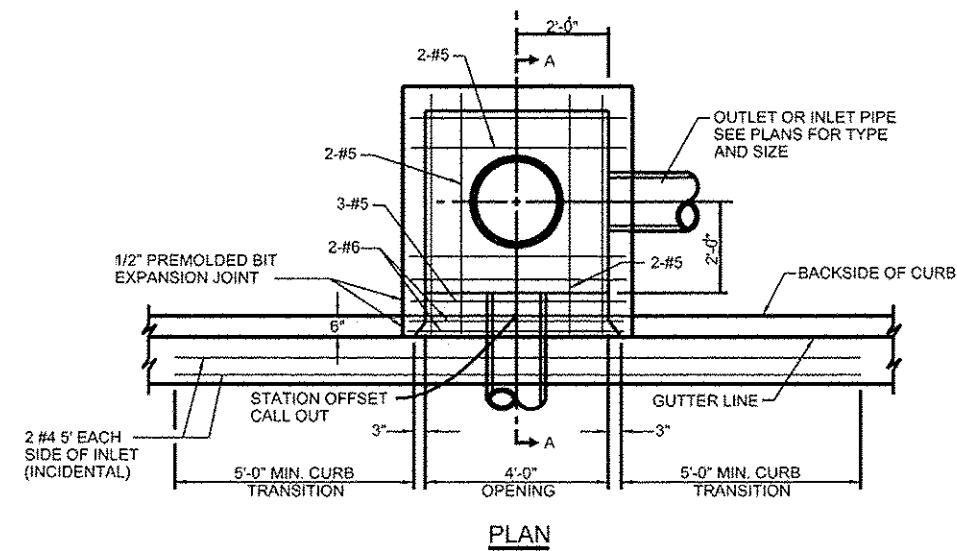
SECTION C-C
ADJACENT TO SIDEWALK

NOTE:
THE COST OF FURNISHING AND INSTALLING THE 1/2" PREFORMED EXPANSION JOINT FILLER, REINFORCEMENT BARS, TIE BARS, TYPE B CURB, AND SIDEWALK LEDGE SHALL BE INCLUDED IN THE COST OF THE PCC DRIVEWAY PAVEMENT.

NOTE:
THE COST OF FURNISHING AND INSTALLING THE 1/2" PREFORMED EXPANSION JOINT FILLER, REINFORCEMENT BARS, AND SAW CUT SHALL BE INCLUDED IN THE COST OF THE PCC DRIVEWAY PAVEMENT.

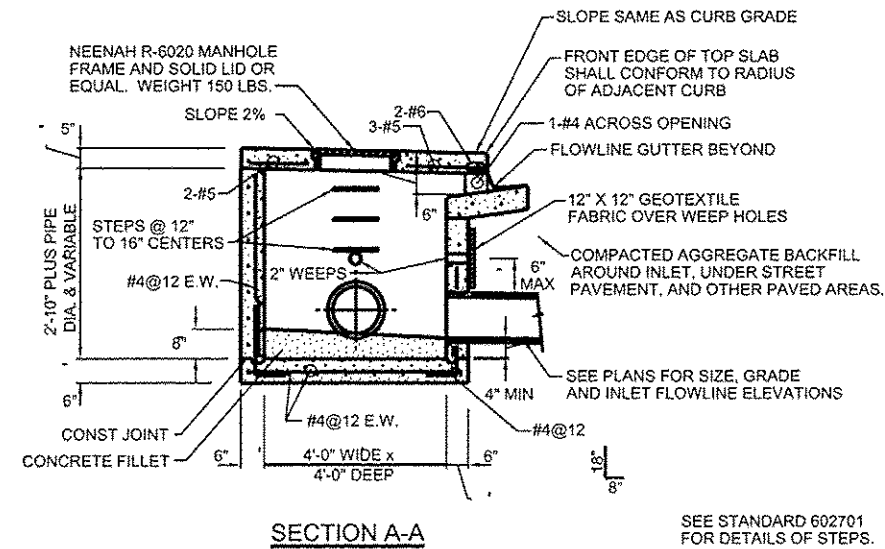


SECTION B-B

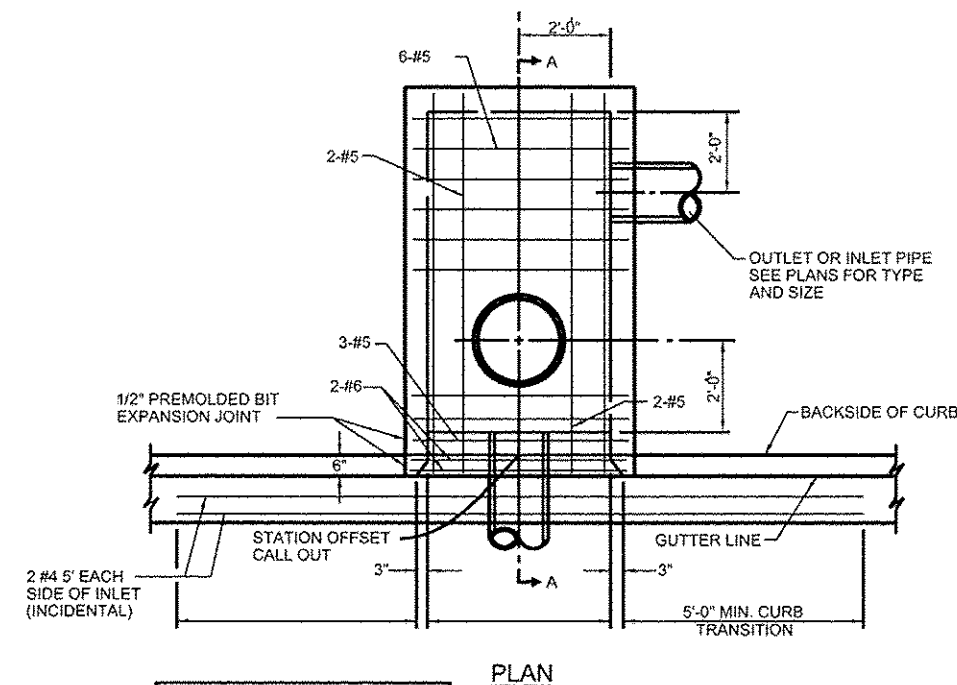


STATION OFFSET CALL OUT
IS THE CENTER OF INLET AND
THE BACK OF CURB.

INLETS, SPECIAL, TYPE E, 4' X 4'
NOT TO SCALE

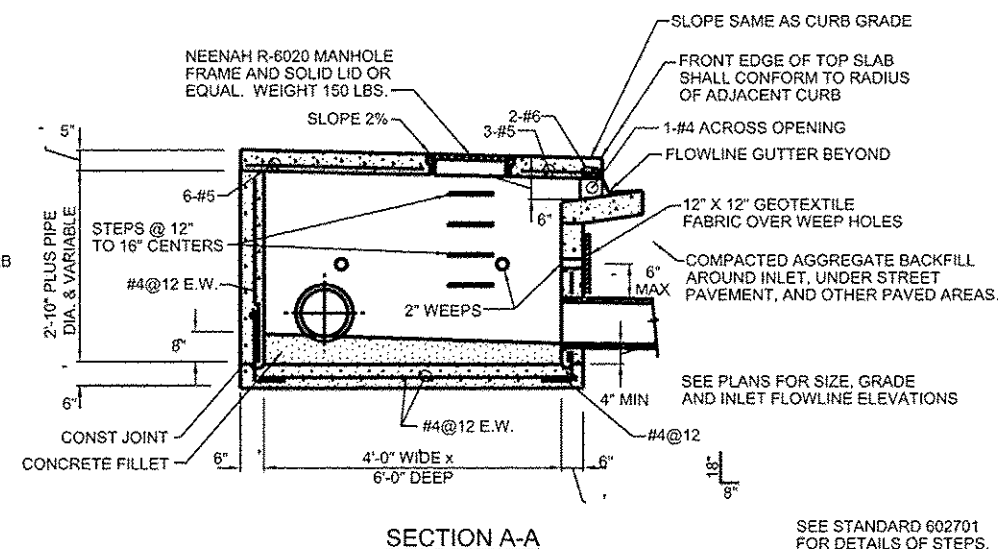


SEE STANDARD 602701
FOR DETAILS OF STEPS.



STATION OFFSET CALL OUT
IS THE CENTER OF INLET AND
THE BACK OF CURB.

INLETS, SPECIAL, TYPE E, 4' X 6'
NOT TO SCALE

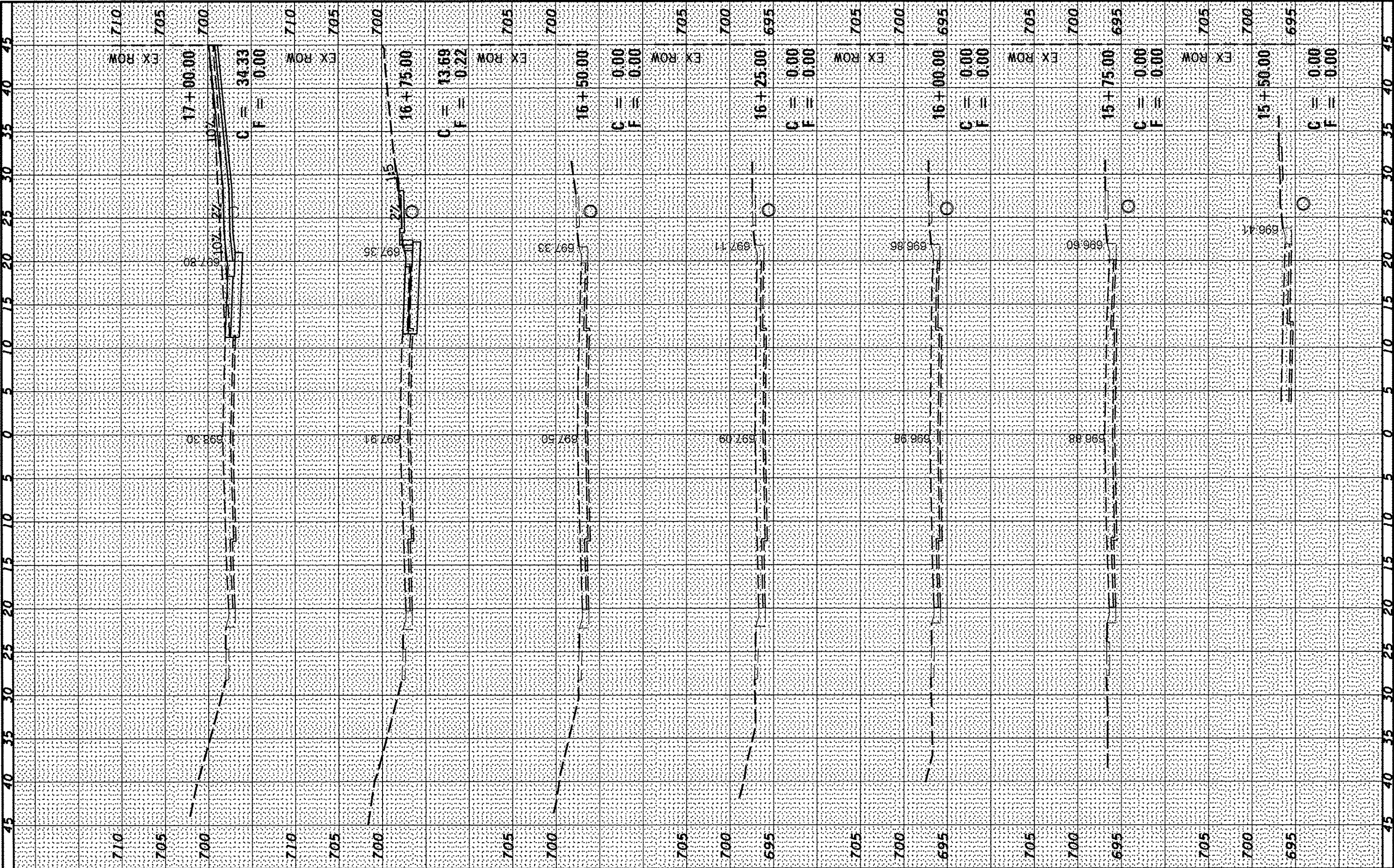


SEE STANDARD 602701
FOR DETAILS OF STEPS

FILE NAME *	USER NAME * BNK	DESIGNED - BNK	REVISED -	CITY OF QUINCY 730 MAINE STREET QUINCY, IL 62301	MISCELLANEOUS DETAILS				F.A.J. RTE.	SECTION	COUNTY	TOTAL SHEETS	SHEET NO.
MOB2.0900314.DGN		DRAWN - BNK	REVISED -		7802	09-00514-00-SW	ADAMS	28	18				
	PLOT SCALE * 1" = 5' (FS)	CHECKED -	REVISED -		CONTRACT NO.								
	PLOT DATE * *DATE*	DATE -	REVISED -		SCALE:	SHEET NO. 2 OF 2 SHEETS	STA.	TO STA.	FED. ROAD DIST. NO.	ILLINOIS FED. AID PROJECT			

FINAL SHEET	SUBMITTED	BY	DATE
NO.	DATE		
	PLOTTED		
	TEMPLATE		
	AREAS		
	CHECKED		

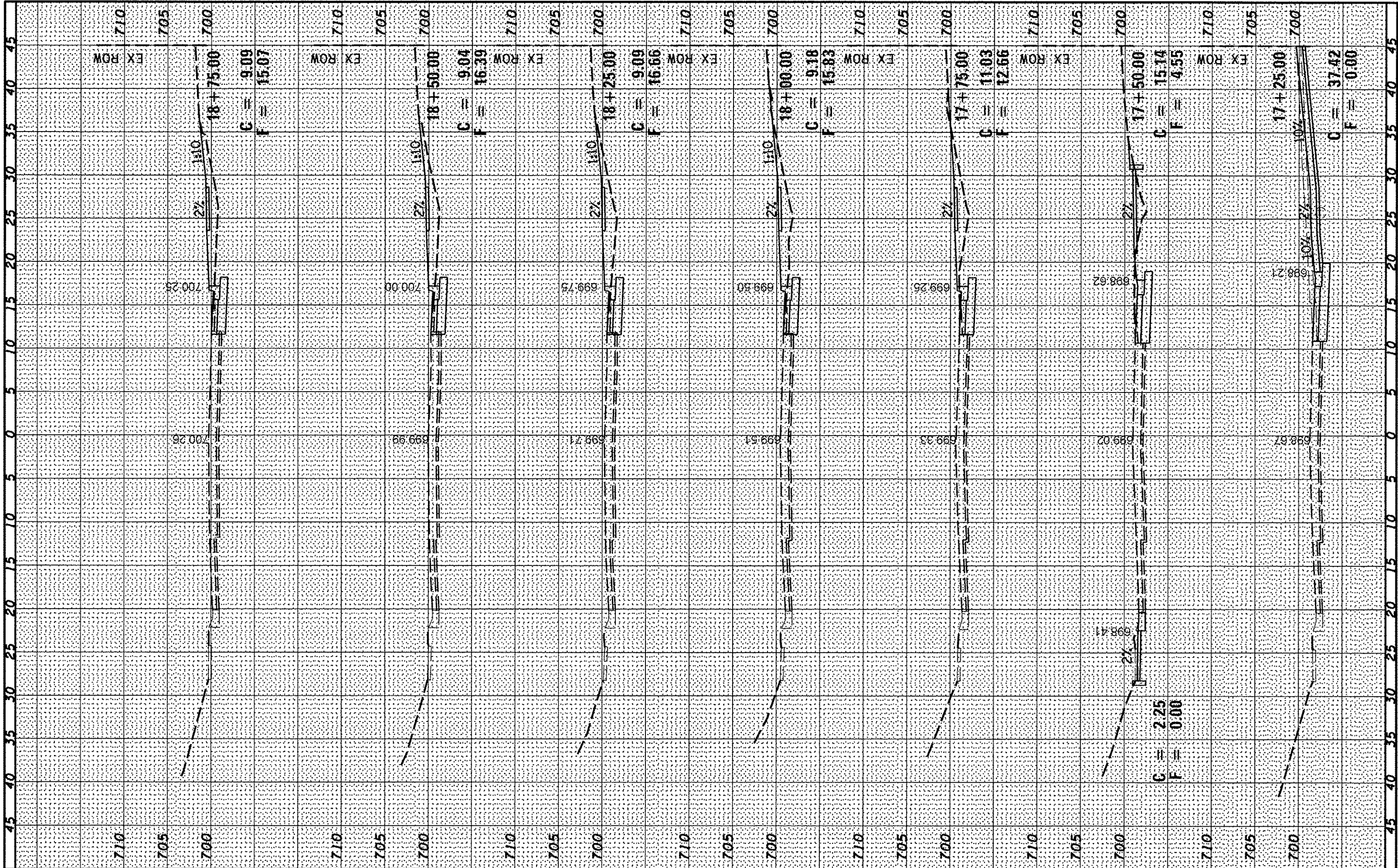
ORIGINAL SHEET	SUBMITTED	BY	DATE
NO.	DATE		
	PLOTTED		
	TEMPLATE		
	AREAS		
	CHECKED		



FILE NAME * XS.COLUMBUS_0900314.DGN	USER NAME * BNK	DESIGNED - DRAWN - CHECKED - DATE -	REVISED - REVISED - REVISED - REVISED -	CITY OF QUINCY 730 MAINE STREET QUINCY, IL 62305	FAU 7802 (COLUMBUS ROAD) CROSS SECTIONS SCALE: SHEET NO. 1 OF 7 SHEETS STA. 15+50.00 TO STA. 17+00.00	FAU RTE. 7802	SECTION 09-00314-00-SW	COUNTY ADAMS	TOTAL SHEETS 28	SHEET NO. 19
						FED. ROAD DIST. NO.	ILLINOIS FED. AID PROJECT			

FINAL SURVEY	DATE
NOTE BOOK	
NO.	

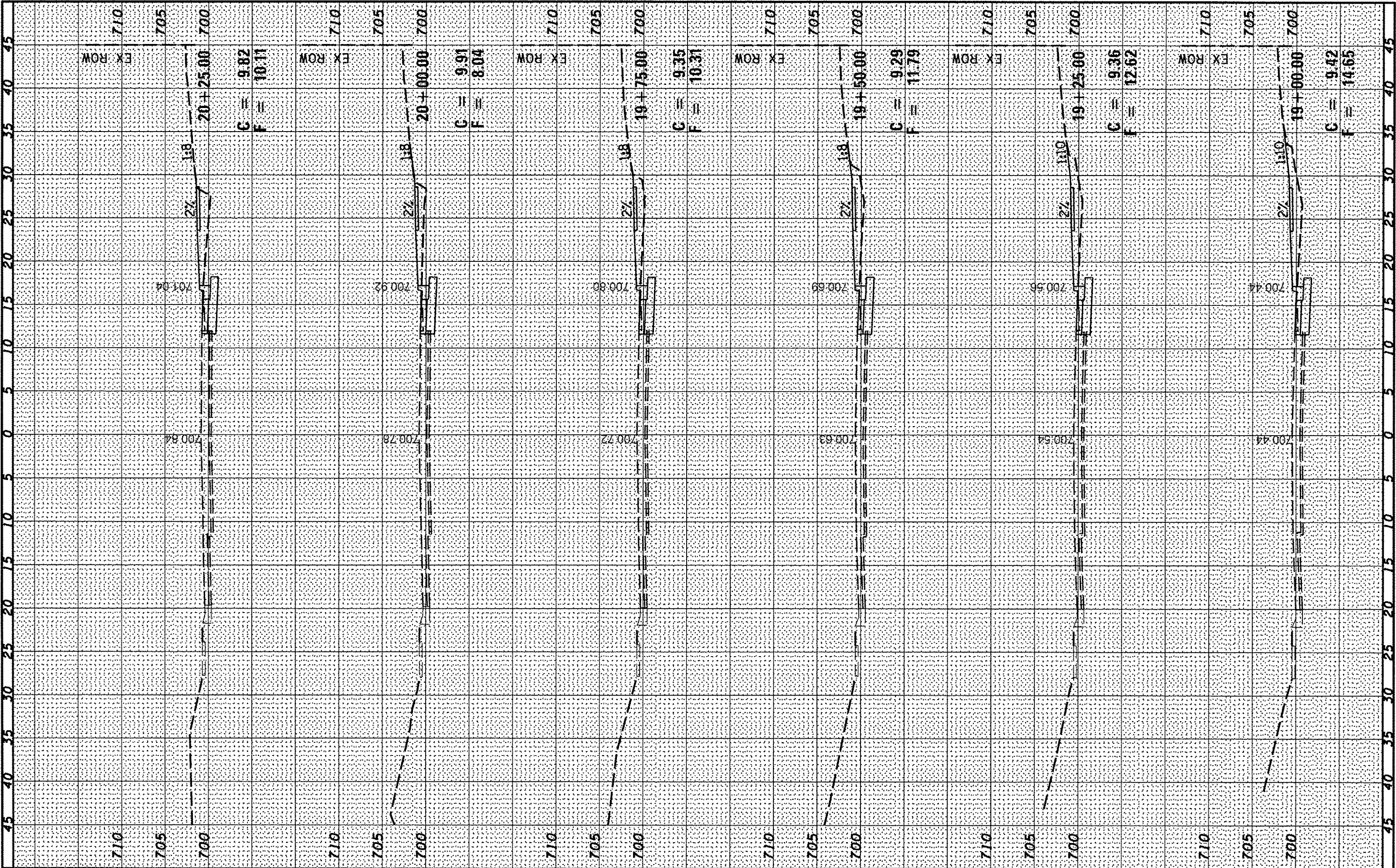
ORIGINAL SURVEY	DATE
NOTE BOOK	
NO.	



FILE NAME * XS_COLUMBUS_0900314.DGN	USER NAME * BNK	DESIGNED - DRAWN - CHECKED - DATE -	REVISED - REVISED - REVISED - REVISED -	CITY OF QUINCY 730 MAINE STREET QUINCY, IL 62301	FAU 7802 (COLUMBUS ROAD) CROSS SECTIONS	SCALE: SHEET NO. 2 OF 7 SHEETS STA. 17+25.00 TO STA. 18+75.00	FAU RTE. 7802	SECTION 09-00314-00-SR	COUNTY ADAMS	TOTAL SHEETS 28	SHEET NO. 20
--	--------------------	--	--	--	--	---	------------------	---------------------------	-----------------	--------------------	-----------------

FINAL	DATE
SURVEY	BY
NOTE BOOK	
NO.	

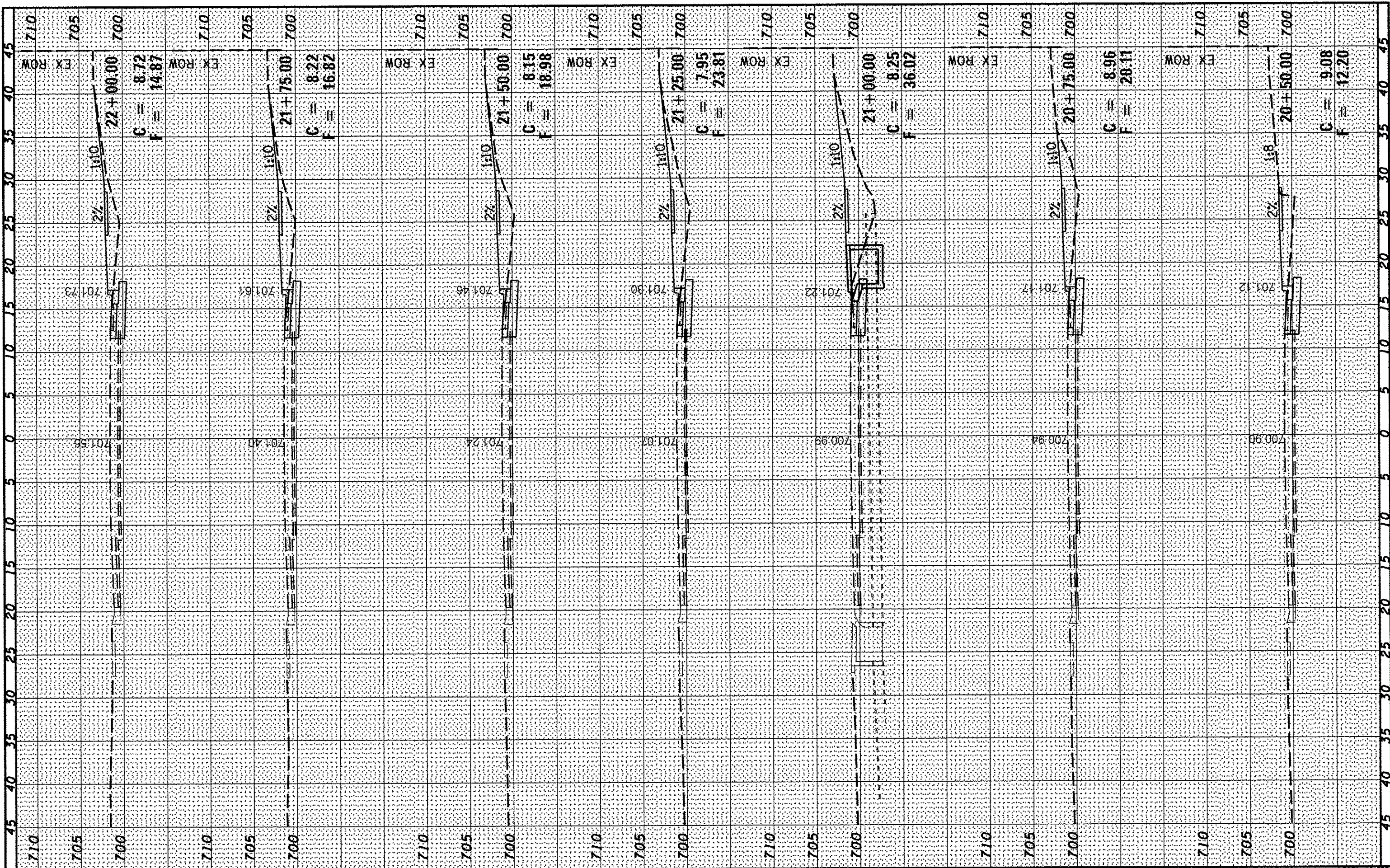
ORIGINAL	DATE
SURVEY	BY
NOTE BOOK	
NO.	



FILE NAME XS.COLUMBUS.0900314.DGN	USER NAME BNK	DESIGNED DRAWN CHECKED DATE	REVISED REVISED REVISED REVISED	CITY OF QUINCY 730 MAINE STREET QUINCY, IL 62301	FAU 7802 (COLUMBUS ROAD) CROSS SECTIONS	SCALE: SHEET NO. 3 OF 7 SHEETS STA. 19+00.00 TO STA. 20+25.00	SECTION 09-00314-00-SW	COUNTY ADAMS	TOTAL SHEETS 28	SHEET NO. 21
--------------------------------------	------------------	--------------------------------------	--	--	--	---	---------------------------	-----------------	--------------------	-----------------

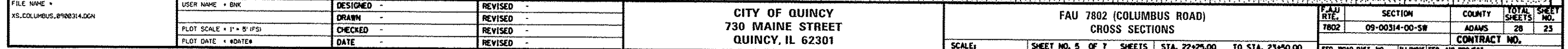
FINAL	BY	DATE
SURVEY		
NOTE BOOK		
NO.		

ORIGINAL	BY	DATE
SURVEY		
NOTE BOOK		
NO.		

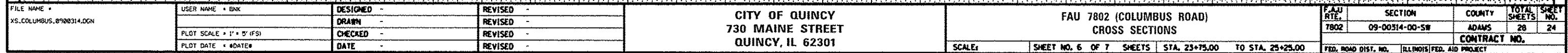


FILE NAME * XS.COLUMBUS.0900314.DGN	USER NAME * BNK	DESIGNED * DRAWN * CHECKED * DATE *	REVISED * REVISED * REVISED * REVISED *	CITY OF QUINCY 730 MAINE STREET QUINCY, IL 62301	FAU 7802 (COLUMBUS ROAD) CROSS SECTIONS	SCALE: SHEET NO. 4 OF 7 SHEETS STA. 20+50.00 TO STA. 22+00.00	FAD RTE. 7802	SECTION 09-00314-00-5W	COUNTY ADAMS	TOTAL SHEETS 28	SHEET NO. 22
--	--------------------	--	--	--	--	---	---------------------	---------------------------	-----------------	-----------------------	--------------------

ORIGINAL SURVEY	SURVEYED PLOTTED	BY	DATE
NOTE BOOK	TEMPLATE		
NO.	AREAS CHECKED		



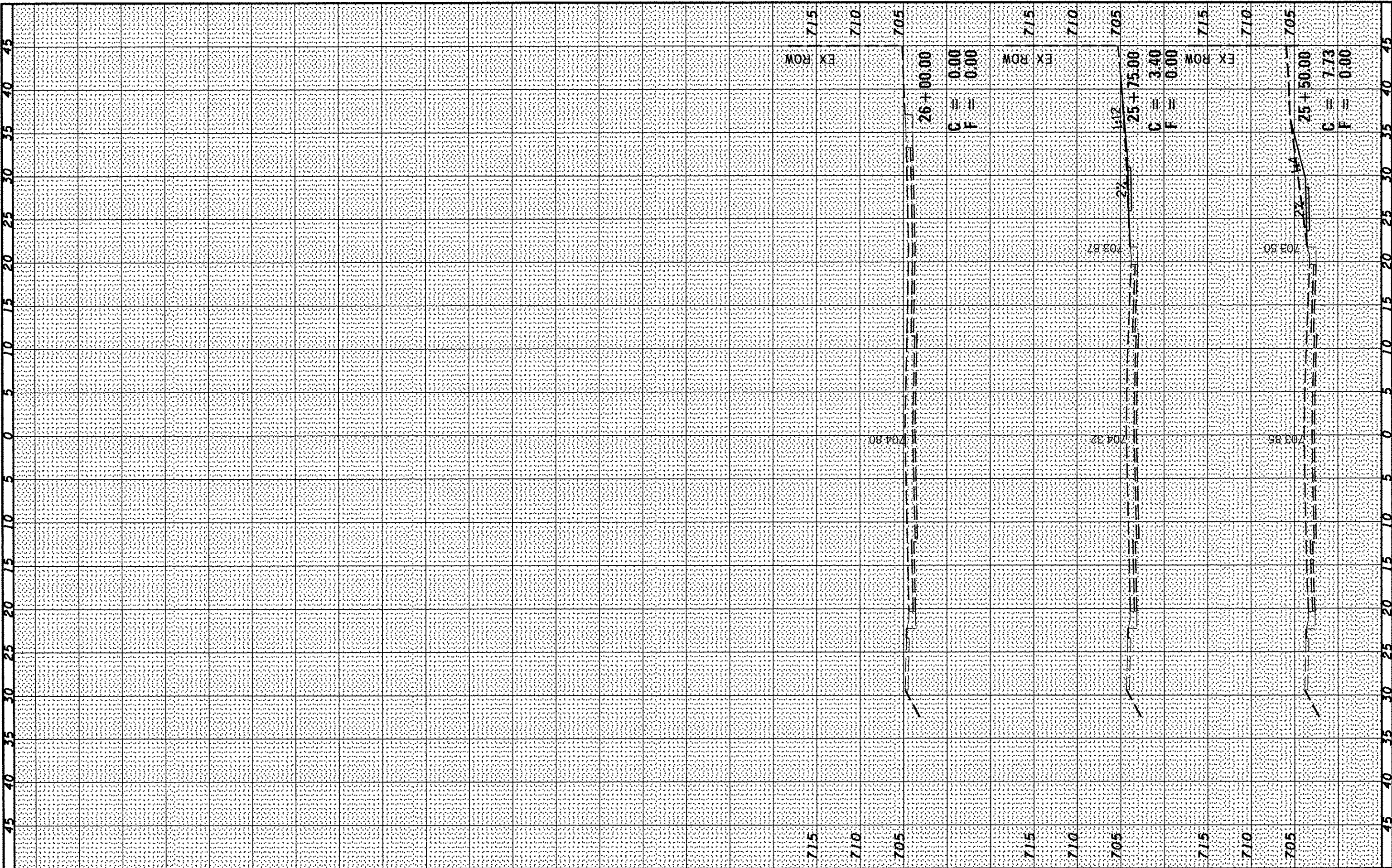
ORIGINAL SURVEY	SURVEYED	BY	DATE
NOTE BOOK	PLOTTED		
	TEMPLATE		
	AREAS		
	AREAS CHECKED		
NO.			



9361

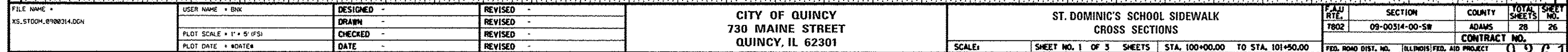
FINAL SURVEY	SURVEYED	BY	DATE
NOTE BOOK	PLOTTED		
NO.	TEMPLATE		
	AREAS		
	CHECKED		

ORIGINAL SURVEY	SURVEYED	BY	DATE
NOTE BOOK	PLOTTED		
NO.	TEMPLATE		
	AREAS		
	CHECKED		



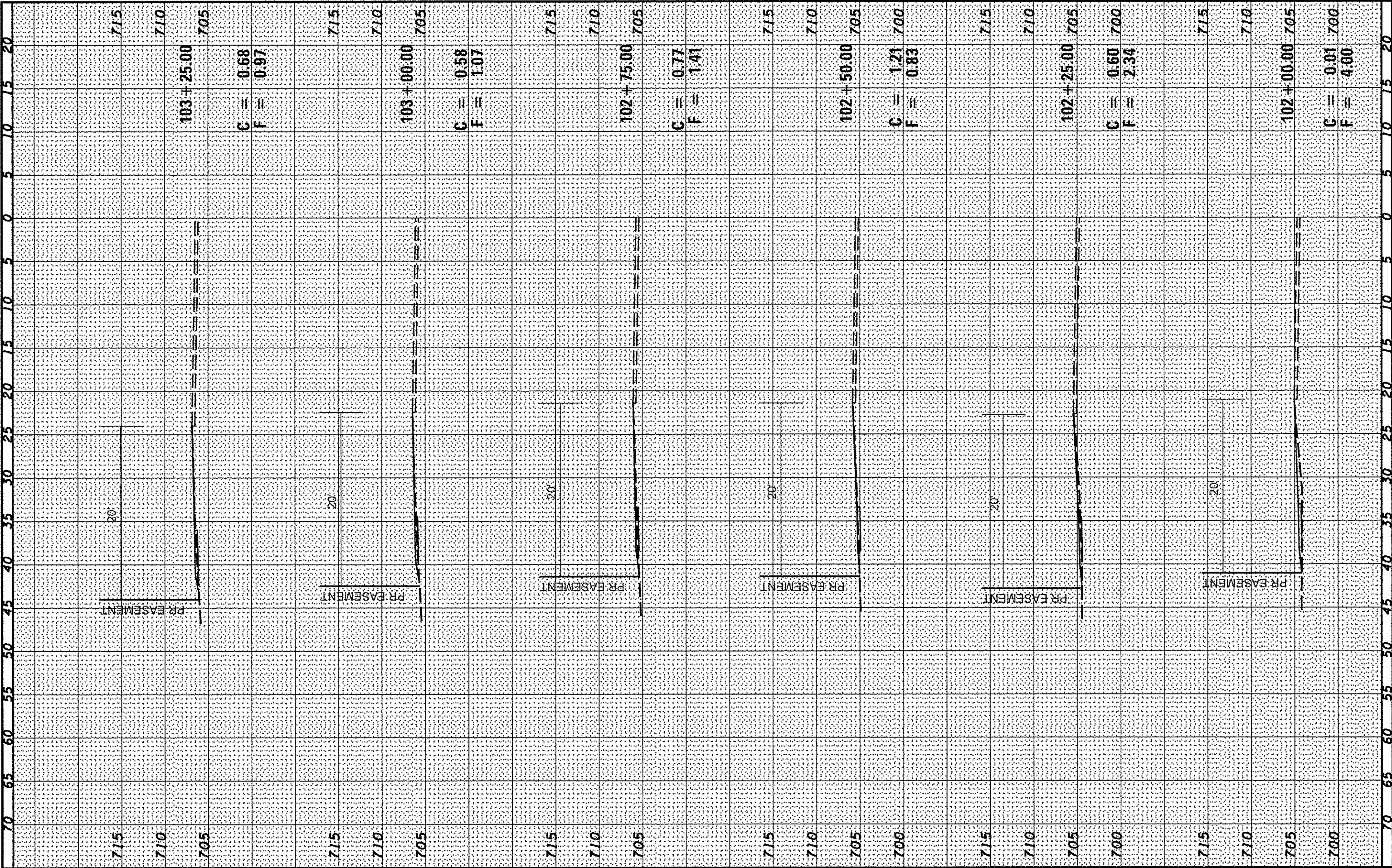
FILE NAME * XS.COLUMBUS.0900314.DGN	USER NAME * DNK	DESIGNED - DRAWN - CHECKED - DATE -	REVISED - REVISED - REVISED - REVISED -	CITY OF QUINCY 730 MAINE STREET QUINCY, IL 62301	FAU 7802 (COLUMBUS ROAD) CROSS SECTIONS	SCALE: SHEET NO. 7 OF 7 SHEETS STA. 25+50.00 TO STA. 26+00.00	FAU RTE. 7802	SECTION 09-00314-00-SW	COUNTY ADAMS	TOTAL SHEETS 28	SHEET NO. 25
--	--------------------	--	--	--	--	---	------------------	---------------------------	-----------------	--------------------	-----------------

ORIGINAL SURVEY	SURREYED	18	DATE
	PLOTTED		
	TEMPLATE		
	AREAS		
	AREAS CHECKED		
NO			
NOTE BOOK			



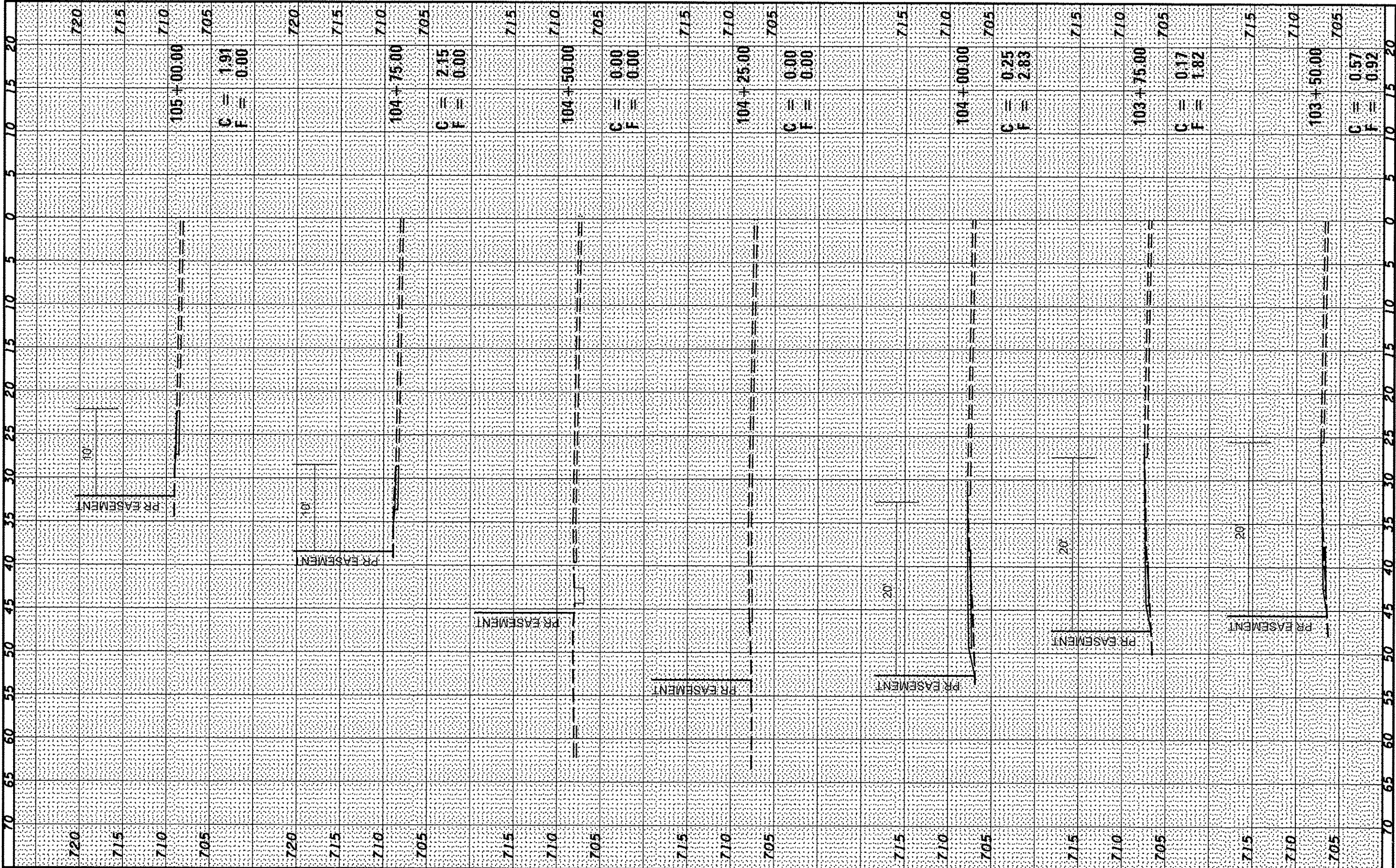
FINAL	SURVEYED	BY	DATE
SURVEY	PLOTTED		
NOTE BOOK	TEMPLATE		
NO.	AREAS CHECKED		

ORIGINAL	SURVEYED	BY	DATE
SURVEY	PLOTTED		
NOTE BOOK	TEMPLATE		
NO.	AREAS CHECKED		



FINAL	SURVEYED	BY	DATE
SHEET	PLOTTED		
NOTE BOOK	TEMP. ARE		
NO.	AS SET		

ORIGINAL	SURVEYED	BY	DATE
SURVEY	PLOTTED		
NOTE BOOK	TEMP. ARE		
NO.	AS SET		



FILE NAME XS-STDOM_0900314.DGN	USER NAME BNK	DESIGNED ORAIN	REVISD REVISD	CITY OF QUINCY 730 MAINE STREET QUINCY, IL 62301	ST. DOMINIC'S SCHOOL SIDEWALK CROSS SECTIONS	SCALE SHEET NO. 3 OF 3 SHEETS	STA. 103+50 TO STA. 105+00	F.A.J. RTE. 7802	SECTION 09-00314-00-5W	COUNTY ADAMS	TOTAL SHEETS 28	SHEET NO. 28
PLOT SCALE 1" = 5' (SW)	CHECKED	REVISD	REVISD			FED. ROAD DIST. NO.	ILLINOIS FED. AID PROJECT	CONTRACT NO.				
PLOT DATE #DATE#	DATE	REVISD	REVISD									