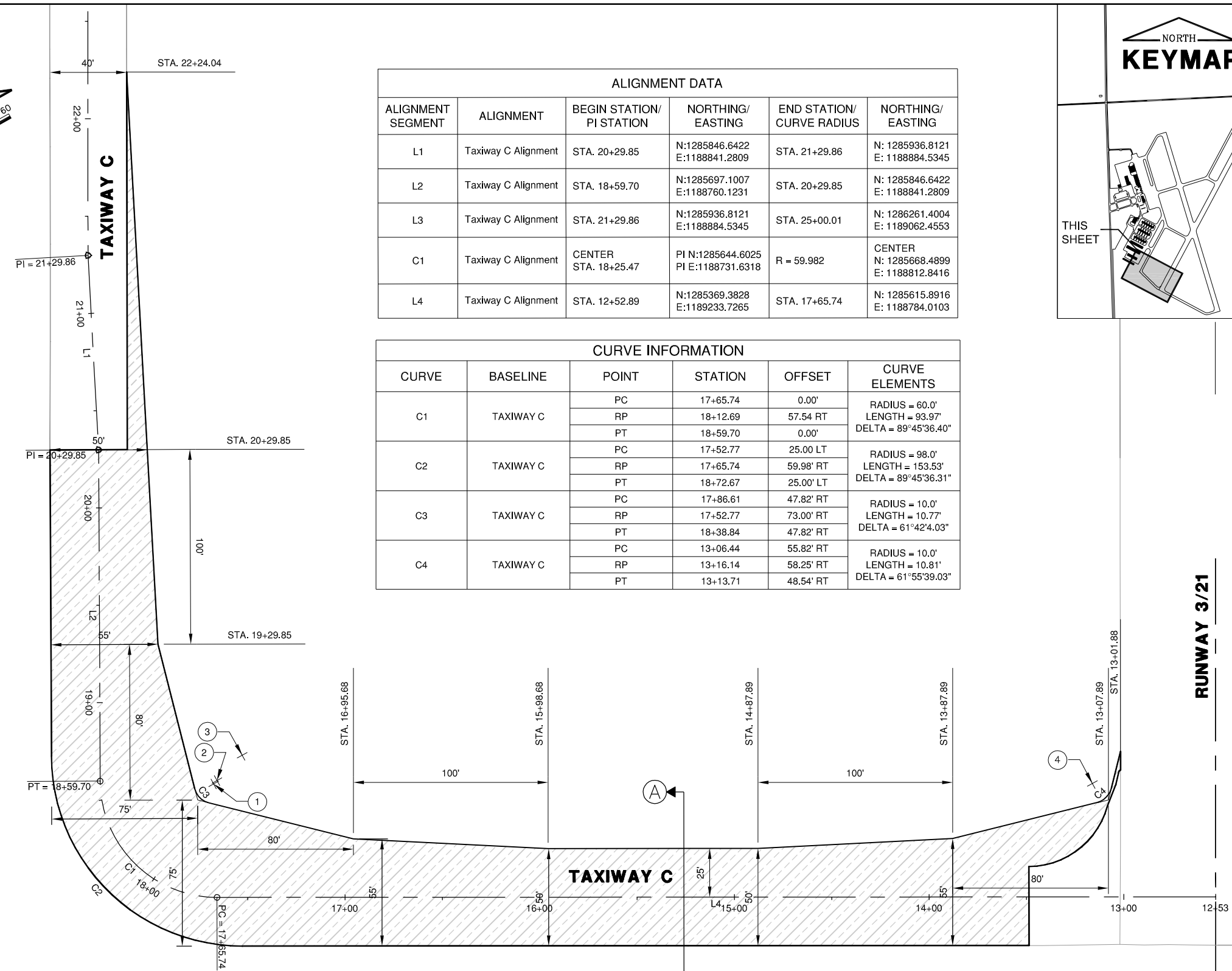
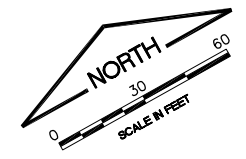
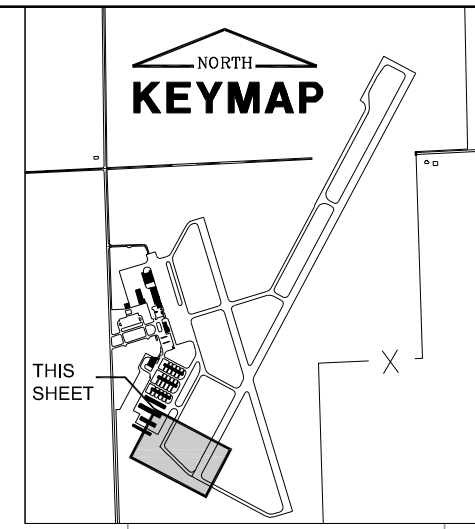


T HANGAR TAXILANE



ALIGNMENT DATA					
ALIGNMENT SEGMENT	ALIGNMENT	BEGIN STATION/ PI STATION	NORTHING/ EASTING	END STATION/ CURVE RADIUS	NORTHING/ EASTING
L1	Taxiway C Alignment	STA. 20+29.85	N:1285846.6422 E:1188841.2809	STA. 21+29.86	N: 1285936.8121 E: 1188884.5345
L2	Taxiway C Alignment	STA. 18+59.70	N:1285697.1007 E:1188760.1231	STA. 20+29.85	N: 1285846.6422 E: 1188841.2809
L3	Taxiway C Alignment	STA. 21+29.86	N:1285936.8121 E:1188884.5345	STA. 25+00.01	N: 1286261.4004 E: 1189062.4553
C1	Taxiway C Alignment	CENTER STA. 18+25.47	PI N:1285644.6025 PI E:1188731.6318	R = 59.982	CENTER N: 1285668.4899 E: 1188812.8416
L4	Taxiway C Alignment	STA. 12+52.89	N:1285369.3828 E:1189233.7265	STA. 17+65.74	N: 1285615.8916 E: 1188784.0103

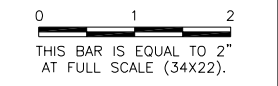
CURVE INFORMATION					
CURVE	BASELINE	POINT	STATION	OFFSET	CURVE ELEMENTS
C1	TAXIWAY C	PC	17+65.74	0.00'	RADIUS = 60.0' LENGTH = 93.97' DELTA = 89°45'36.40"
		RP	18+12.69	57.54 RT	
		PT	18+59.70	0.00'	
C2	TAXIWAY C	PC	17+52.77	25.00 LT	RADIUS = 98.0' LENGTH = 153.53' DELTA = 89°45'36.31"
		RP	17+65.74	59.98' RT	
		PT	18+72.67	25.00' LT	
C3	TAXIWAY C	PC	17+86.61	47.82' RT	RADIUS = 10.0' LENGTH = 10.77' DELTA = 61°42'4.03"
		RP	17+52.77	73.00' RT	
		PT	18+38.84	47.82' RT	
C4	TAXIWAY C	PC	13+06.44	55.82' RT	RADIUS = 10.0' LENGTH = 10.81' DELTA = 61°55'39.03"
		RP	13+16.14	58.25' RT	
		PT	13+13.71	48.54' RT	



FILE: PROPIMP.dwg  
 UPDATE BY: Andrew Bodine  
 PLOT DATE: 1/13/2014 11:55 AM  
 DNVBase\_StatePlane  
 C:\SPAL  
 BASE PROP.GEO  
 Keymap  
 tempgeo

VE048

REVISIONS		
NUMBER	BY	DATE



VERMILION REGIONAL AIRPORT  
 VERMILION REGIONAL AIRPORT AUTHORITY  
 DANVILLE, ILLINOIS

RELOCATE TAXIWAY C AND WIDEN FILLETS  
 PROPOSED IMPROVEMENTS

© Copyright CMT, Inc.  
**CMT**  
 CRAWFORD, MURPHY & TILLY, INC.  
 CONSULTING ENGINEERS  
 License No. 184-000613

DESIGN BY:	AJB
DRAWN BY:	CMT
CHECKED BY:	TJH
APPROVED BY:	CET
DATE:	JANUARY 3, 2014
JOB No:	120420100
IL PROJ. NO.	DNV-4229
SBG PROJ. NO.	3-17-SBGP-XX
SHEET	09 OF 27 SHEETS

**NOTES:**  
 SEE SITE PLAN FOR BASELINE INFORMATION.

**LEGEND**

- 3" BITUMINOUS SURFACE COURSE (401)
- 4" BITUMINOUS BASE COURSE (403)
- 12" CRUSHED AGGREGATE BASE COURSE (209)
- NEW COMPACTED SUBGRADE (152)

K:\Dorville\p\12042010\Draw\Sheets