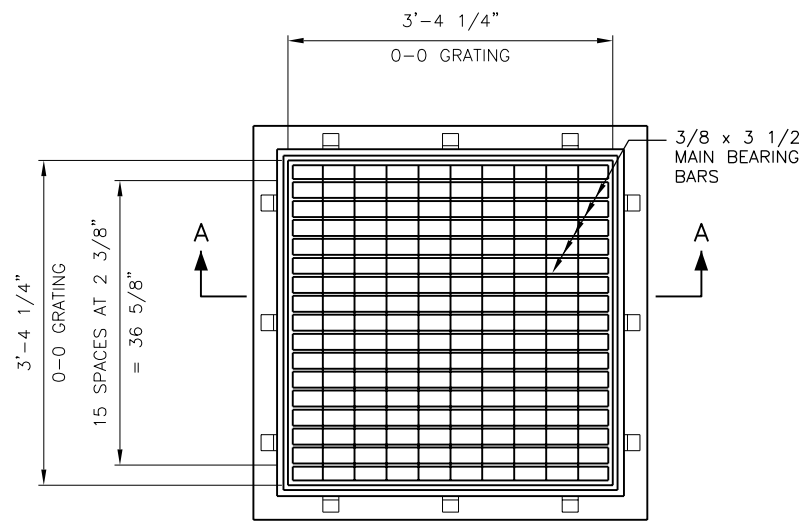


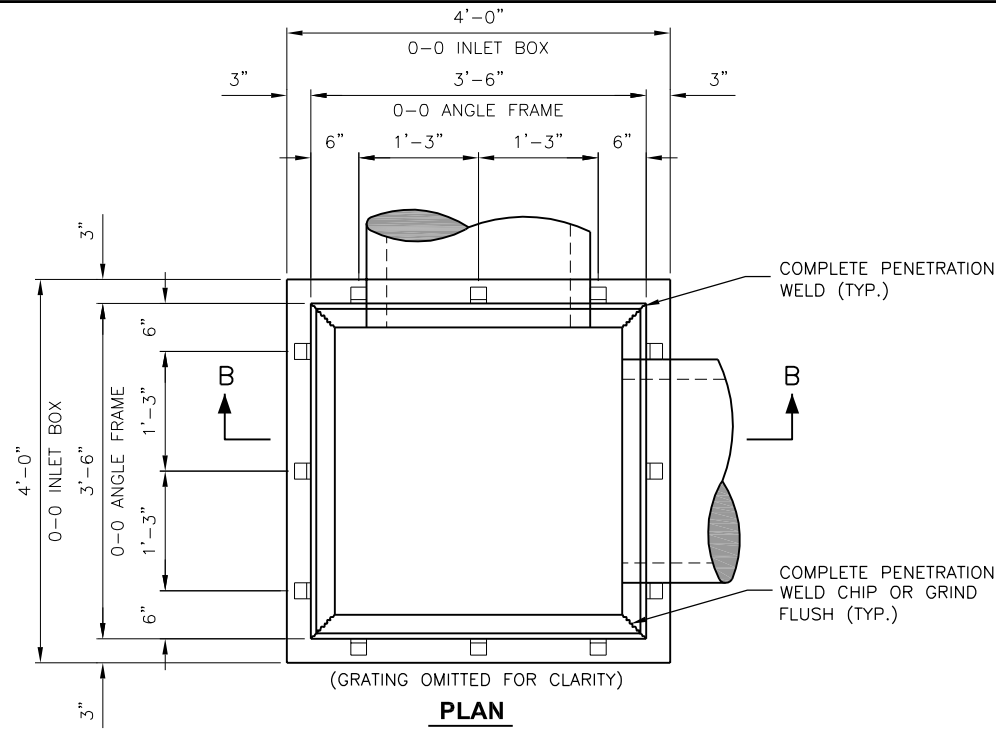
**VE048**

REVISIONS		
NUMBER	BY	DATE

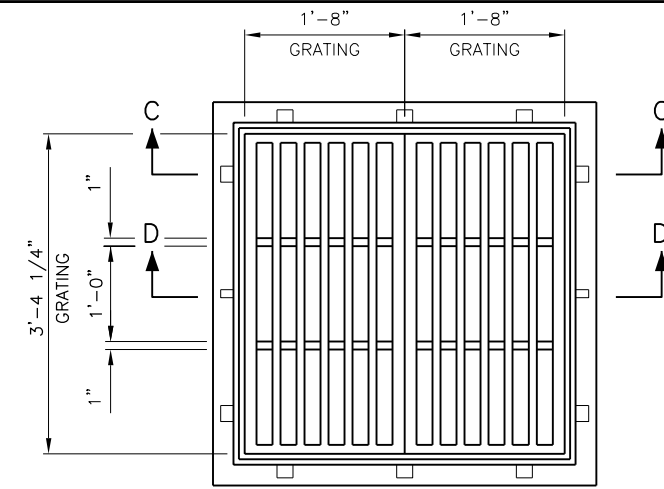
0 1 2  
 THIS BAR IS EQUAL TO 2"  
 AT FULL SCALE (34X22).



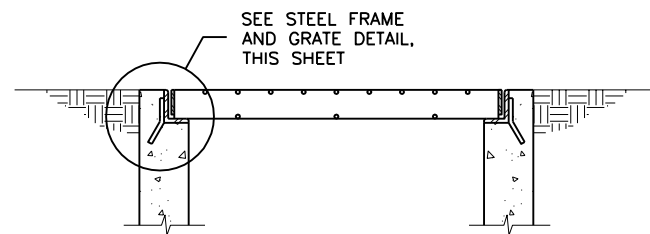
**PLAN**  
N.T.S.



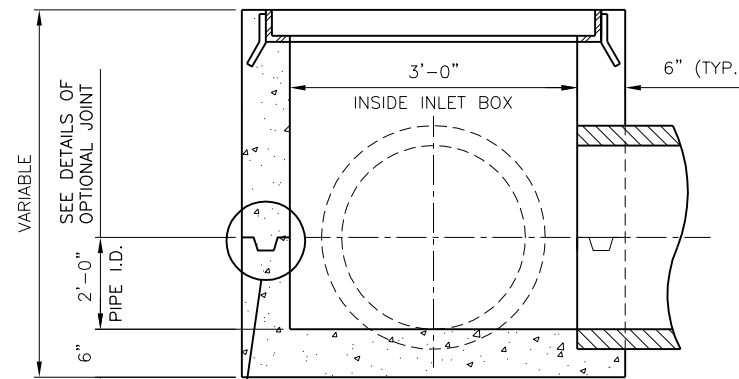
**PLAN**  
N.T.S.



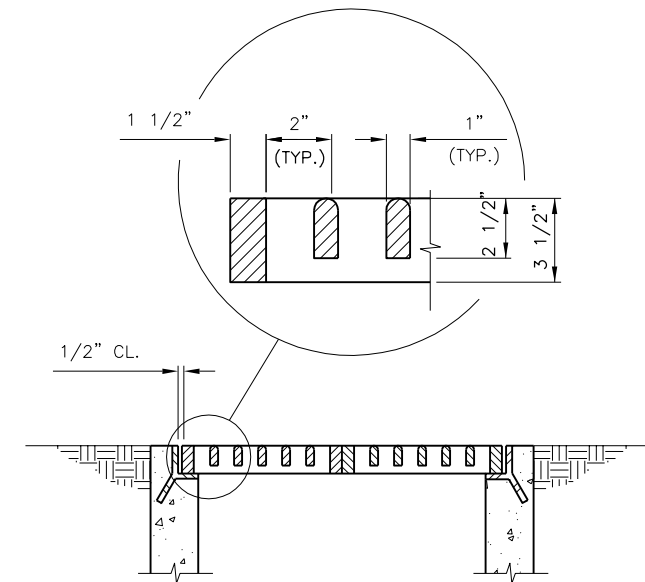
**PLAN**  
N.T.S.



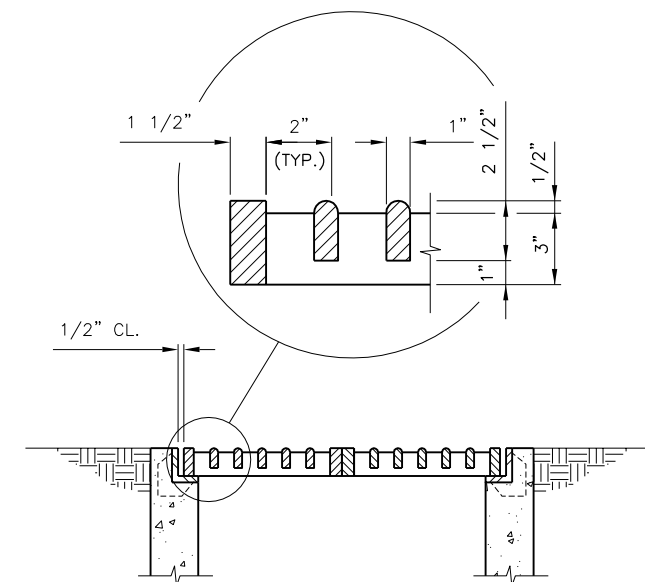
**SECTION A-A**  
N.T.S.



**SECTION B-B**  
N.T.S.



**SECTION C-C**  
N.T.S.



**SECTION D-D**

**CAST FRAME & GRATE DETAILS**

N.T.S.

**SECTION A-A**  
N.T.S.

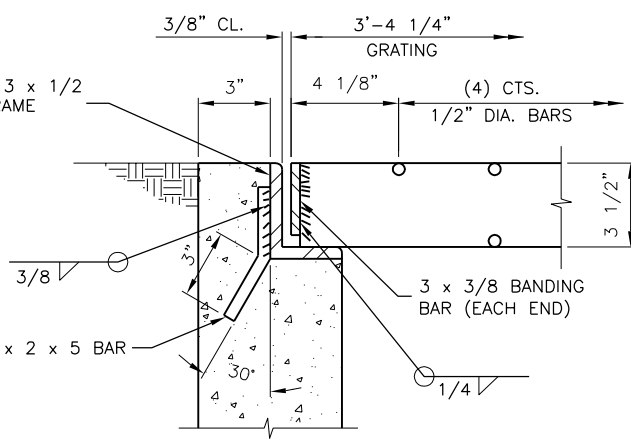
**SECTION B-B**  
N.T.S.

**SECTION C-C**  
N.T.S.

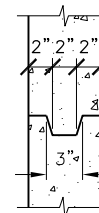
**SECTION D-D**

**CAST FRAME & GRATE DETAILS**

N.T.S.



**STEEL FRAME & GRATE DETAIL**  
N.T.S.



**OPTIONAL JOINT DETAIL**  
N.T.S.

**INLET NOTE**

1. INLET IS AN IDOT STD. 542546, FLUSH INLET BOX FOR MEDIAN.
2. INLET 2 FRAME & GRATE IS A NEENAH R-3807 OR APPROVED EQUAL.
3. INLET 1 FRAME AND LID IS A NEENAH R-1878-A10L OR APPROVED EQUAL.

VERMILION REGIONAL AIRPORT  
 VERMILION REGIONAL AIRPORT AUTHORITY  
 DANVILLE, ILLINOIS

RELOCATE TAXIWAY C AND WIDEN FILLETS  
 INLET DETAILS

© Copyright CMT, Inc.  
**CMT**  
 CRAWFORD, MURPHY & TILLY, INC.  
 CONSULTING ENGINEERS  
 License No. 184-000613

DESIGN BY: AJB  
 DRAWN BY: CMT  
 CHECKED BY: TJH  
 APPROVED BY: CET  
 DATE: JANUARY 3, 2014  
 JOB No: 120420100

IL PROJ. NO. DNV-4229  
 SBG PROJ. NO. 3-17-SBGP-XX

SHEET 15 OF 27 SHEETS