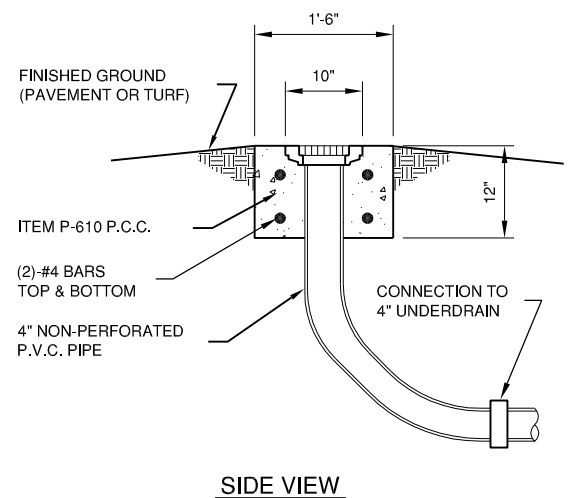
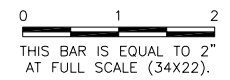
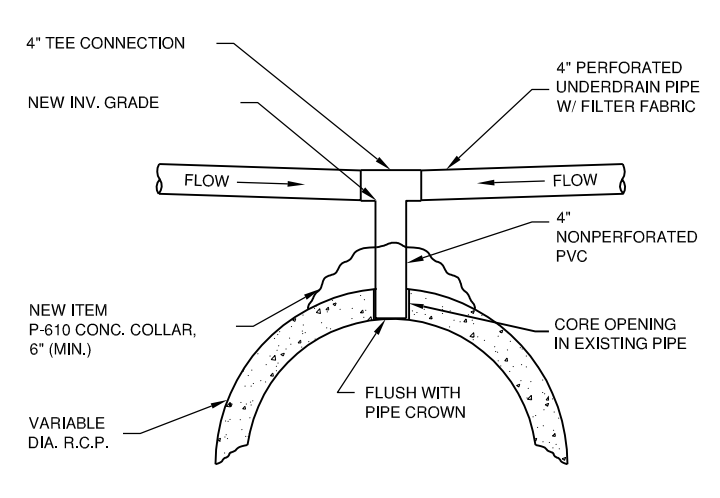


VE048

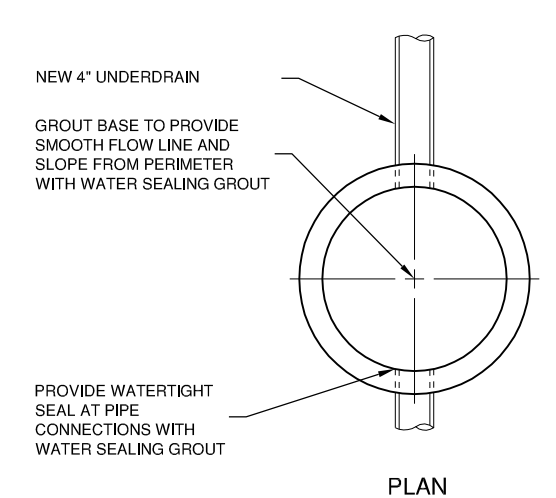
REVISIONS		
NUMBER	BY	DATE



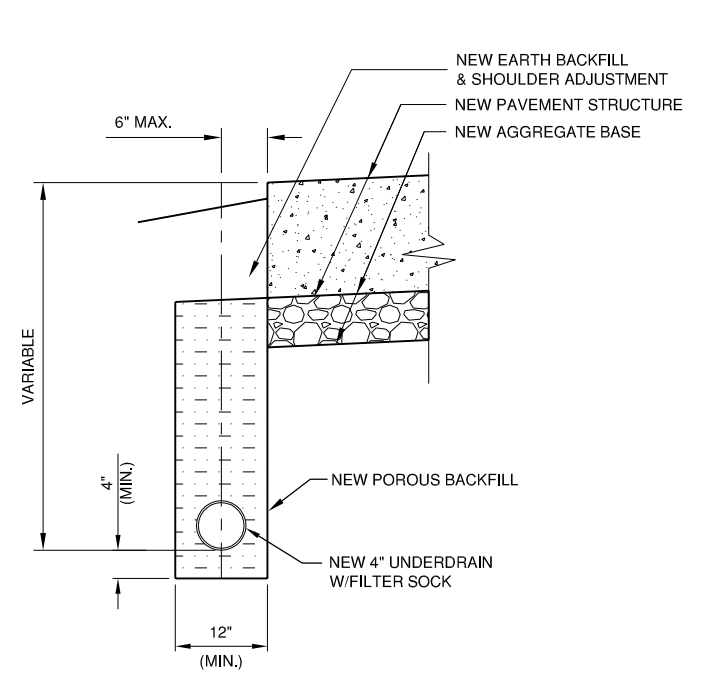
UNDERDRAIN CLEAN-OUT DETAIL (TYPE 1)
 N.T.S.



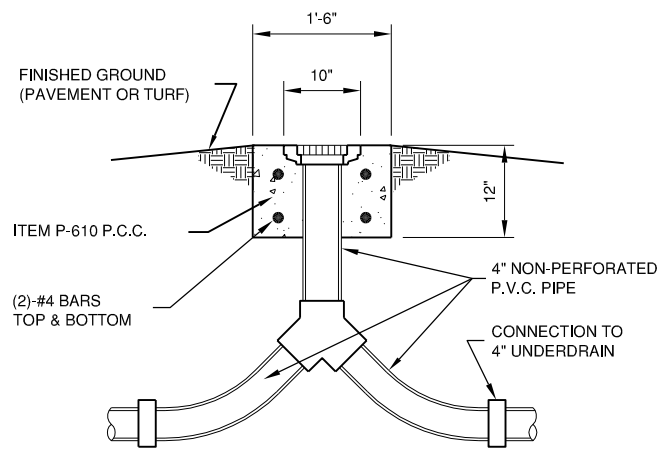
UNDERDRAIN DIRECT TOP CONNECTION DETAIL
 N.T.S.



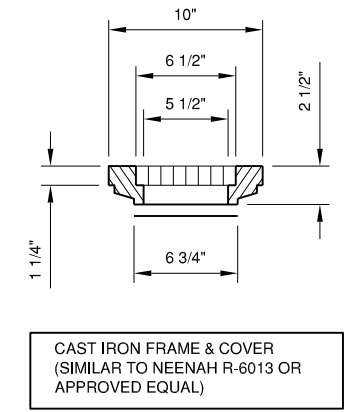
UNDERDRAIN CLEAN-OUT DETAIL
 N.T.S.



TYPICAL UNDERDRAIN DETAIL PAVEMENT EDGE
 N.T.S.

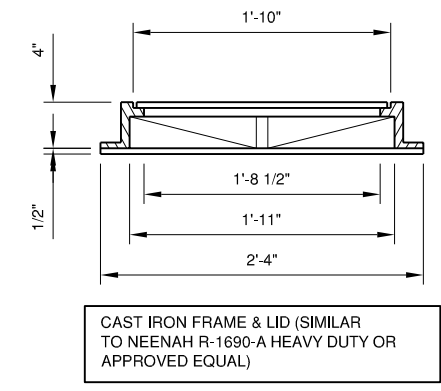


UNDERDRAIN CLEAN-OUT DETAIL (TYPE 2)
 N.T.S.



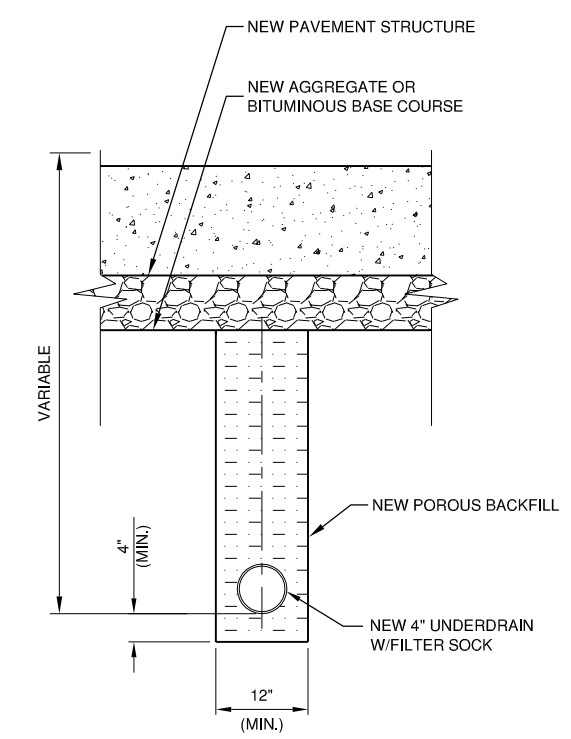
CAST IRON FRAME & COVER
 (SIMILAR TO NEENAH R-6013 OR APPROVED EQUAL)

FRAME & COVER

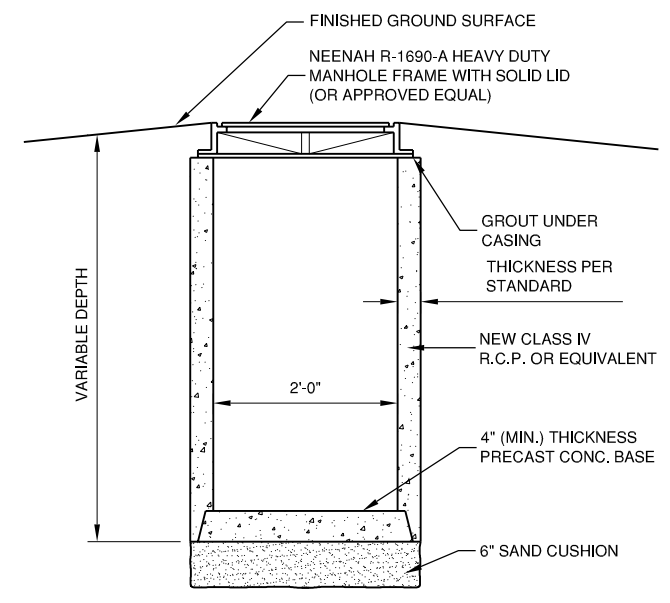


CAST IRON FRAME & LID (SIMILAR TO NEENAH R-1690-A HEAVY DUTY OR APPROVED EQUAL)

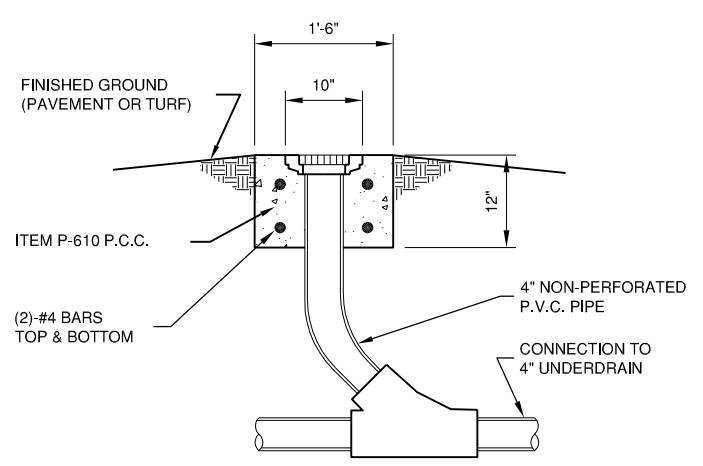
FRAME & LID



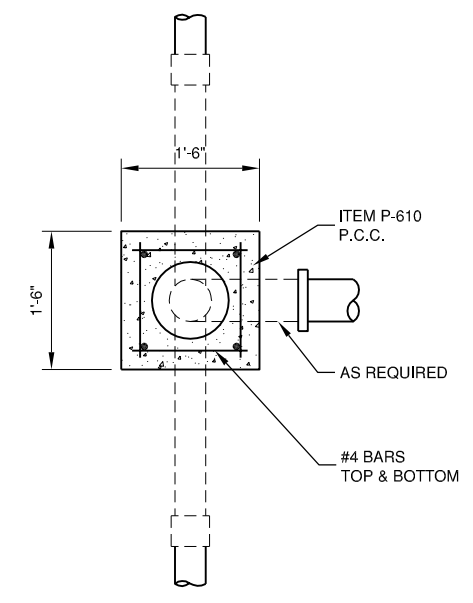
TYPICAL UNDERDRAIN DETAIL BELOW PAVEMENT
 N.T.S.



UNDERDRAIN COLLECTION STRUCTURE DETAIL
 N.T.S.



UNDERDRAIN CLEAN-OUT DETAIL (TYPE 3)
 N.T.S.



UNDERDRAIN CLEAN-OUT DETAIL
 N.T.S.

UNDERDRAIN NOTE
 DURING UNDERDRAIN CONSTRUCTION, CARE SHALL BE TAKEN TO ENSURE GOOD DRAINAGE BETWEEN THE SUB-BASE AND THE POROUS BACKFILL MATERIAL WHICH WILL AFFECT DRAINAGE TO THE UNDERDRAIN SHALL BE REMOVED PRIOR TO THE PLACEMENT OF PROPOSED POROUS BACKFILL. ALL COST FOR THIS WORK SHALL BE CONSIDERED INCIDENTAL.

VERMILION REGIONAL AIRPORT
 VERMILION REGIONAL AIRPORT AUTHORITY
 DANVILLE, ILLINOIS

RELOCATE TAXIWAY C AND WIDEN FILLETS
 UNDERDRAIN DETAILS

© Copyright CMT, Inc.

CMT
 CRAWFORD, MURPHY & TILLY, INC.
 CONSULTING ENGINEERS
 License No. 184-000613

DESIGN BY:	AJB
DRAWN BY:	CMT
CHECKED BY:	TJH
APPROVED BY:	CET
DATE:	JANUARY 3, 2014
JOB No:	120420100
IL PROJ. NO.	DNV-4229
SBG PROJ. NO.	3-17-SBGP-XX
SHEET	16 OF 27 SHEETS

K:\Drawings\12042010\Draw\Sheets