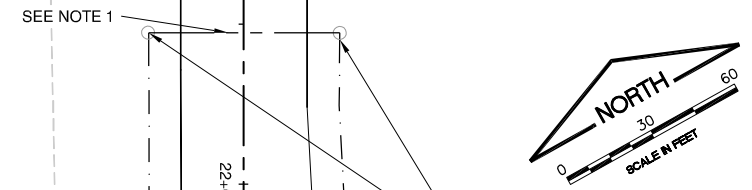
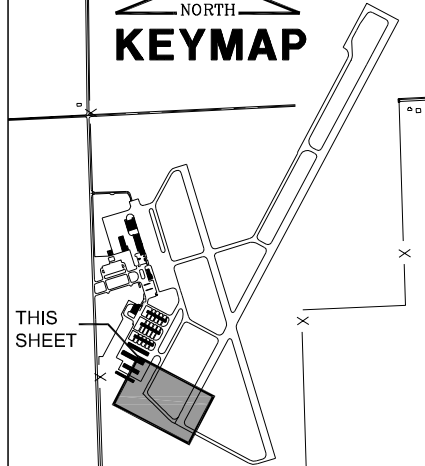


T HANGAR TAXILANE



- LEGEND**
- ◻ EXISTING BASE MOUNTED TAXIWAY LIGHT
 - EXISTING STAKE MOUNTED TAXIWAY LIGHT
 - PROPOSED STAKE MOUNTED TAXIWAY LIGHT
 - ◼ NEW BASE MOUNTED TAXIWAY LIGHT
 - ◻ EXISTING BASE MOUNTED RUNWAY LIGHT
 - ◻ EXISTING BASE MOUNTED THRESHOLD LIGHT IN-PAVEMENT
 - △△ EXISTING REIL LIGHT
 - ▬ NEW AIRFIELD SIGN
 - - - NEW TAXIWAY CIRCUIT
 - - - EXISTING TAXIWAY CIRCUIT
 - ▬▬▬ NEW CONCRETE ENCASED DUCT
 - ▬▬▬ EXISTING CONCRETE ENCASED DUCT
 - ▬▬▬ NEW SPLIT DUCT
 - - - NEW RUNWAY CIRCUIT
 - - - EXISTING RUNWAY CIRCUIT
 - - - EXISTING VASI CABLE
 - - - EXISTING REIL CABLE
 - - - TEMPORARY JUMPER CABLE

KEYMAP



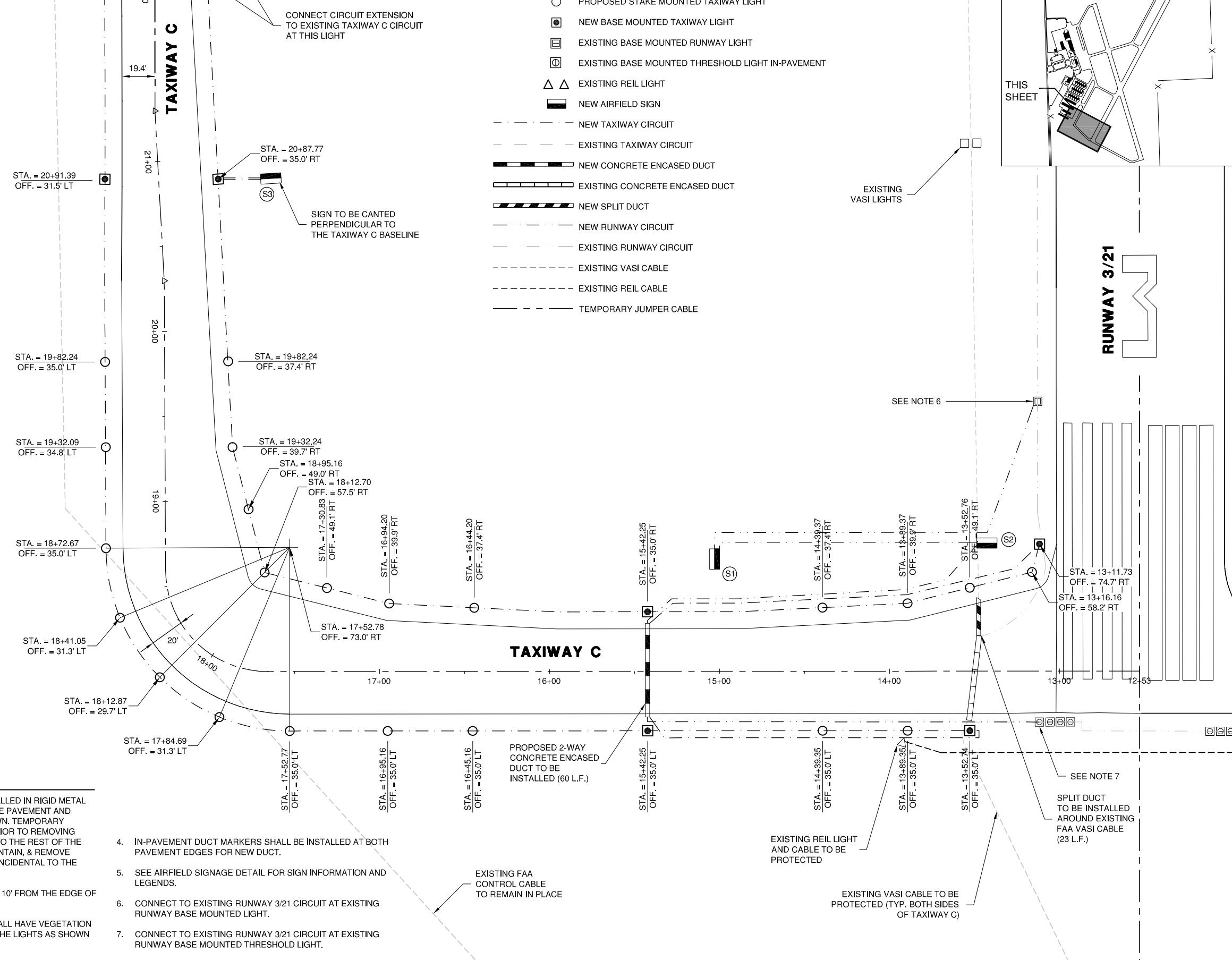
FILE: ELECTPLAN.dwg
 UPDATE BY: Andrew Bodine
 PLOT DATE: 1/13/2014 11:58 AM

Bose-Combined Keymap

VE048

REVISIONS		
NUMBER	BY	DATE

0 1 2
 THIS BAR IS EQUAL TO 2" AT FULL SCALE (34X22).



**VERMILION REGIONAL AIRPORT
 VERMILION REGIONAL AIRPORT AUTHORITY
 DANVILLE, ILLINOIS**

**RELOCATE TAXIWAY C AND WIDEN FILLETS
 ELECTRICAL & LIGHTING PLAN**

© Copyright CMT, Inc.

CMT
 CRAWFORD, MURPHY & TILLY, INC.
 CONSULTING ENGINEERS
 License No. 184-000613

DESIGN BY:	AJB
DRAWN BY:	CMT
CHECKED BY:	TJH
APPROVED BY:	CET
DATE:	JANUARY 3, 2014
JOB No:	120420100
IL PROJ. NO.	DNV-4229
SBG PROJ. NO.	3-17-SBGP-XX

SHEET 19 OF 27 SHEETS

K:\Drawings\12042010\Draw\Sheets