

VE048

REVISIONS

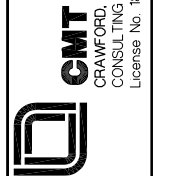
NUMBER	BY	DATE

0 1 2
 THIS BAR IS EQUAL TO 2"
 AT FULL SCALE (34X22).

VERMILION REGIONAL AIRPORT
 VERMILION REGIONAL AIRPORT AUTHORITY
 DANVILLE, ILLINOIS

RELOCATE TAXIWAY C AND WIDEN FILLETS
 TAXIWAY C CROSS SECTIONS 3

© Copyright CMT, Inc.



DESIGN BY:	AJB
DRAWN BY:	CMT
CHECKED BY:	TJH
APPROVED BY:	CET
DATE:	JANUARY 3, 2014
JOB No:	120420100
IL PROJ. NO.	DNV-4229
SBG PROJ. NO.	3-17-SBGP-XX
SHEET	27 OF 27 SHEETS

