

STATE OF ILLINOIS
DEPARTMENT OF TRANSPORTATION
DIVISION OF HIGHWAYS

**PROPOSED
HIGHWAY PLANS**

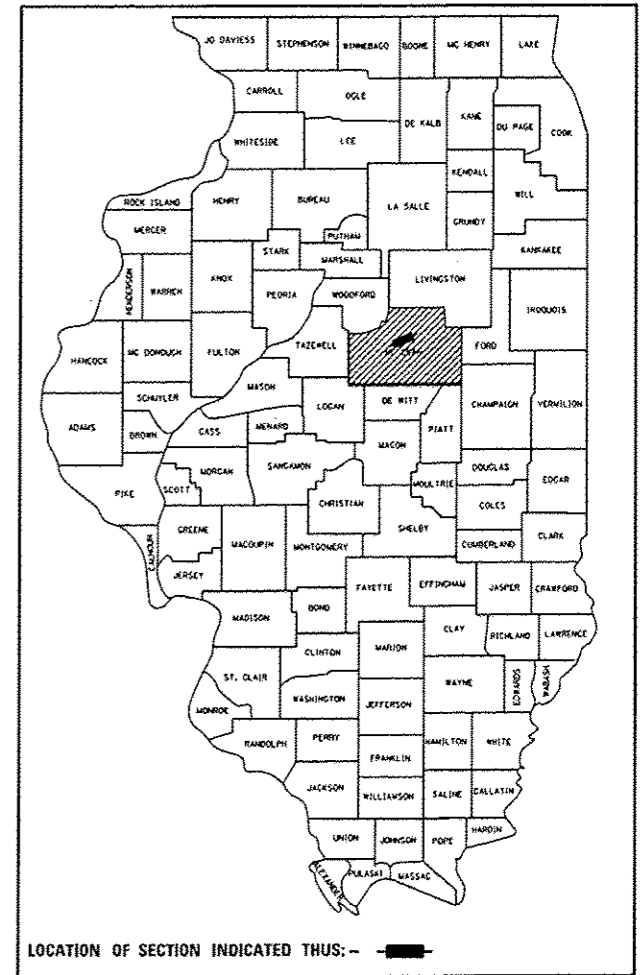
FAI ROUTE 55 (I-55)
SECTION 57-6HB-2(BR)

**THIN CONCRETE OVERLAY,
BRIDGE DECK REPAIR
MCLEAN COUNTY**

C-95-056-15
UNDER W OAKLAND AVE. SW OF BLOOMINGTON

F.A.I. RTE.	SECTION	COUNTY	TOTAL SHEETS	SHEET NO.
55	57-6HB-2(BR)	MCLEAN	31	1
		ILLINOIS	CONTRACT NO. 70B57	

D-95-056-15



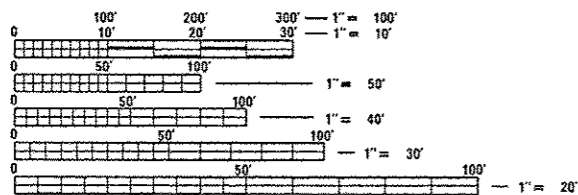
FOR INDEX OF SHEETS, SEE SHEET NO. 2

CURRENT TRAFFIC DATA

OAKLAND AVE.			FAI-55		
2015	ADT	2,000	2015	ADT	47,000
2025	ADT	2,300	2025	ADT	51,200
2035	ADT	2,600	2035	ADT	55,500
2035	DHV	285	2035	DHV	4,290
	PU/PC%	92.7		PU/PC%	64.6
	SU %	5.9		SU %	4.7
	MU %	1.4		MU %	30.7

DESIGN DESIGNATION

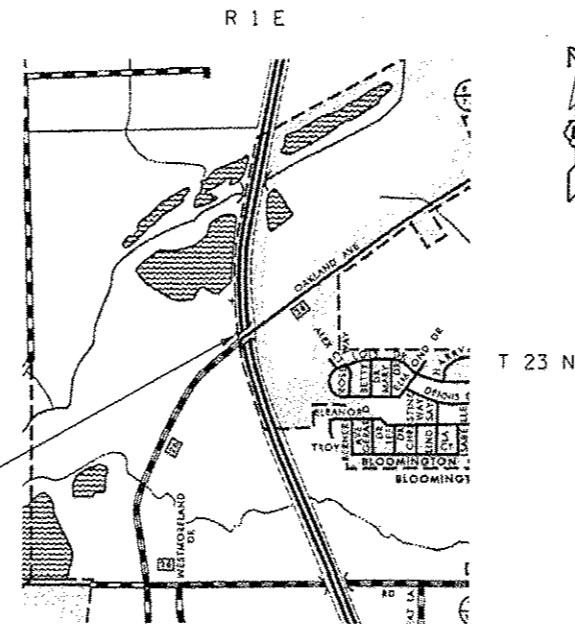
FAI-55 - INTERSTATE
OAKLAND RD. - MAJOR COLLECTOR



FULL SIZE PLANS HAVE BEEN PREPARED USING STANDARD ENGINEERING SCALES. REDUCED SIZED PLANS WILL NOT CONFORM TO STANDARD SCALES. IN MAKING MEASUREMENTS ON REDUCED PLANS, THE ABOVE SCALES MAY BE USED.

J.U.L.I.E.
JOINT UTILITY LOCATION INFORMATION FOR EXCAVATION
1-800-892-0123
OR 811

PROJECT ENGINEER: TIM BRANDENBURG
PROJECT MANAGER: JEFF M. SHERER
(217) 465-4181
CONTRACT NO. 70B57



S.N. 057-0111 STA. 15+21.96 (OAKLAND AVE.)
S.N. 057-0111 STA. 539+01.45 (FAI 55)
THIN CONCRETE OVERLAY

GROSS LENGTH = 263.040 FT. = 0.0498 MILE
NET LENGTH = 263.040 FT. = 0.0498 MILE

STATE OF ILLINOIS
DEPARTMENT OF TRANSPORTATION
DIVISION OF HIGHWAYS
SUBMITTED *NOVEMBER 21, 2016*
Kennel G. Barnett
REGIONAL ENGINEER
Jan 27, 2017
Maween M. Addis
ENGINEER OF DESIGN AND ENVIRONMENT
Jan 27, 2017
Amelle [Signature]
DIRECTOR OF PROGRAM DEVELOPMENT

**PRINTED BY THE AUTHORITY
OF THE STATE OF ILLINOIS**

REV

INDEX OF SHEETS

SHEET NO.	ITEM
1	COVER SHEET
2	INDEX OF SHEETS/ HIGHWAY STANDARDS
3	GENERAL NOTES
4-5	SUMMARY OF QUANTITIES
6	S.N. 057-0111 GENERAL PLAN & ELEVATION SHEET
7	S.N. 057-0111 EXISTING TYPICAL SECTION
8	EXPANSION JOINT DETAIL
9	WEARING SURFACE PLAN
10-13	BRIDGE DECK PATCHING DETAILS
14	FLOOR DRAIN DETAILS
15	SCHEDULES OF PATCHING
15	STRUCTURAL REPAIR OF CONCRETE DETAIL
16-20	DETOUR SIGNING DETAIL
21-26	AS-BUILT PLANS
27	TRAFFIC CONTROL FOR RAMPS
28-31	PAVEMENT MARKING AND MARKERS (RURAL & URBAN APPLICATIONS)

LIST OF STANDARDS

STANDARD NO.	DESCRIPTION
000001-06	STANDARD SYMBOLS, ABBREVIATIONS AND PATTERNS
001001-02	AREAS OF REINFORCEMENT BARS
001006	DECIMAL OF AN INCH AND OF A FOOT
701301-04	LANE CLOSURE, 2L, 2W SHORT TIME OPERATIONS
701311-03	LANE CLOSURE, 2L, 2W MOVING OPERATIONS, DAY ONLY
701406-11	LANE CLOSURE FREEWAY/ EXPRESSWAY DAY ONLY
701428-01	TRAFFIC CONTROL SETUP/REMOVAL FREEWAY/ EXPRESSWAY
701446-08	TWO-LANE CLOSURE FREEWAY/ EXPRESSWAY
780001-05	TYPICAL PAVEMENT MARKINGS
701901-06	TRAFFIC CONTROL DEVICES

G.N.-100

ENGLISH UNITS OF MEASUREMENT SHALL GOVERN OVER AND SUPERSEDE ANY METRIC UNITS SHOWN IN THIS CONTRACT. WHERE INCLUDED, METRIC UNITS ARE FOR INFORMATION ONLY.

G.N.-105.09A

ALL ELEVATIONS SHOWN IN THE PLANS ARE BASED ON NORTH AMERICAN VERTICAL DATUM OF 1988. (NAVD 88)

G.N.-406

THE QUANTITIES INCLUDED IN THE PLANS FOR HOT-MIX ASPHALT RESURFACING ARE INTENDED TO GIVE THE COVERAGE SHOWN ON THE TYPICAL CROSS SECTIONS. IT IS NOT INTENDED TO INCREASE THE THICKNESS OF THE HOT-MIX ASPHALT MIXTURE IN ORDER TO USE ALL OF THE QUANTITIES INCLUDED IN THE CONTRACT.

G.N. 406H Mixture Requirements

Location	Oakland Ave
Mixture Use	Surface
AC/PG	PG 64-22
Design Air Voids	4.0% @ Ndes=50
Mix Comp(Gradation)	IL 9.5
Friction Aggregate	Mix C
Mixture Weight	112
Quality Management Program	QC/QA
Sublot Size	N.A.

G.N.-1004.01

COARSE AGGREGATE GRADATION CA-10 MAY BE USED WHENEVER COARSE AGGREGATE CA-6 IS SPECIFIED IN THE STANDARD SPECIFICATIONS.

THERE ARE NO COMMITMENTS ASSOCIATED WITH THIS PROJECT

FIBERS ARE INCLUDED IN BRIDGE DECK LATEX OVERLAYS.

ADDITIONAL CMS BOARDS WILL BE REQUIRED IN ADDITION TO THOSE OUTLINED HEREIN THE CONTRACT. CMS BOARDS WILL BE REQUIRED TO WARN OF OAKLAND AVENUE CLOSURE & PRE-WARN OF UPCOMING LANE CLOSURES ON FAI-55. AN EXTRA BOARD WILL BE REQUIRED DURING LANE CLOSURES ON FAI-55 ALONG WITH AN EXTRA BOARD REQUIRED NORTHBOUND ON I-74 PRIOR TO FAI-75/ FAI-55 SPLIT.

GARY SIMS (IDOT TRAFFIC OPERATIONS ENGINEER) SHALL BE CONTACTED PRIOR TO CONSTRUCTION TO COORDINATE UTILIZATION OF THE PERMANENT MESSAGE BOARDS IN AND AROUND THE BLOOMINGTON-NORMAL AREA.

GENERAL NOTES

FILE NAME *	USER NAME * sherr-jn	DESIGNED - JMS	REVISED -	STATE OF ILLINOIS DEPARTMENT OF TRANSPORTATION	GENERAL NOTES	F.A.I. RTE.	SECTION	COUNTY	TOTAL SHEETS	SHEET NO.	
pub\11884EBID\INTEG\illinois.gov\PI00T\Documents\IDOT Offices\District 5\Projects\057\DRAMA\Drawings\Hydra\MS\70857-Indev.dgn	PLOT SCALE * 48.0000 ' / in.	CHECKED -	REVISED -			55	57-6HB-2(BR)	MCLEAN	31	3	
Default	PLOT DATE * 11/16/2016	DATE - 121515	REVISED -			SCALE: SHEET 1 OF 1 SHEETS STA. TO STA.		CONTRACT NO. 70857			
						(ILLINOIS) FED. AID PROJECT					

MCLEAN COUNTY
FAI-55
URBAN INTERSTATE
BRIDGE DECK REPAIRS
S.N. 057-0111, STA. 539+01.45
100% STATE
0014

CODE NO.	ITEM	UNIT	TOTAL QUANTITY	
40600290	BITUMINOUS MATERIALS (TACK COAT)	POUND	66.0	66.0
40600982	HOT-MIX ASPHALT SURFACE REMOVAL - BUTT JOINT	SQ YD	147.0	147.0
40603310	HOT-MIX ASPHALT SURFACE COURSE, MIX "C", N50	TON	13.0	13.0
50157300	PROTECTIVE SHIELD	SQ YD	350.0	350.0
50300100	FLOOR DRAINS	EACH	8.0	8.0
X5030250	BRIDGE DECK GROOVING (LONGITUDINAL)	SQ YD	692.0	692.0
50500405	FURNISHING AND ERECTING STRUCTURAL STEEL	POUND	3,232.0	3,232.0
67000500	ENGINEER'S FIELD OFFICE, TYPE B	CAL MO	4.0	4.0
67100100	MOBILIZATION	LSUM	1.0	1.0
70100700	TRAFFIC CONTROL AND PROTECTION, STANDARD 701406	LSUM	1.0	1.0
70100815	TRAFFIC CONTROL AND PROTECTION, STANDARD 701446	LSUM	1.0	1.0
70200100	NIGHTTIME WORK ZONE LIGHTING	LSUM	1.0	1.0
* 78001110	PAINT PAVEMENT MARKING - LINE 4"	FOOT	726.0	726.0
20015802	PLUG EXISTING DECK DRAINS	EACH	14.0	14.0
X7010410	SPEED DISPLAY TRAILER	CAL MO	3.0	3.0

* SPECIALTY ITEM

FILE NAME *	USER NAME * sherr-jn	DESIGNED -	REVISED -	STATE OF ILLINOIS DEPARTMENT OF TRANSPORTATION	SUMMARY OF QUANTITIES				F.A.I. RTE.	SECTION	COUNTY	TOTAL SHEETS	SHEET NO.
\\IL084EBIDINTEG\illinois.gov\PI\1001\00	uments\100T Offices\District 5\Projects\057	CHECKED -	REVISED -		55	57-6MB-2(BR)	MCLEAN	31	4				
Default	PLOT SCALE * 40,0000 ' / in.	DATE -	REVISED -		SCALE: SHEET 1 OF 2 SHEETS STA. TO STA.				CONTRACT NO. 70B57				
	PLOT DATE * 12/9/2016				ILLINOIS FED. AID PROJECT								

REV

0556101

MCLEAN COUNTY
FAI-55
URBAN INTERSTATE
BRIDGE DECK REPAIRS
S.N. 057-0111, STA. 539+01.45
100% STATE
0014

CODE NO.	ITEM	UNIT	TOTAL QUANTITY	
X7015005	CHANGEABLE MESSAGE <i>SIGN</i>	CAL DAY	140.0	140.0
Z0001800	APPROACH SLAB REPAIR (PARTIAL DEPTH)	SQ YD	20.0	20.0
Z0006012	BRIDGE DECK LATEX CONCRETE OVERLAY, 2 1/4 INCHES	SQ YD	748.0	748.0
Z0012130	BRIDGE DECK SCARIFICATION 3/4"	SQ YD	748.0	748.0
Z0012754	STRUCTURAL REPAIR OF CONCRETE (DEPTH EQUAL TO OR LESS THAN 5 INCHES)	SQ FT	45.0	45.0
Z0016001	DECK SLAB REPAIR (FULL DEPTH, TYPE I)	SQ YD	3.0	3.0
Z0016002	DECK SLAB REPAIR (FULL DEPTH, TYPE II)	SQ YD	9.0	9.0
Z0016702	DETOUR SIGNING	LSUM	1.0	1.0
Z0041895	POLYMER CONCRETE	CU FT	2.5	2.5

* SPECIALTY ITEM

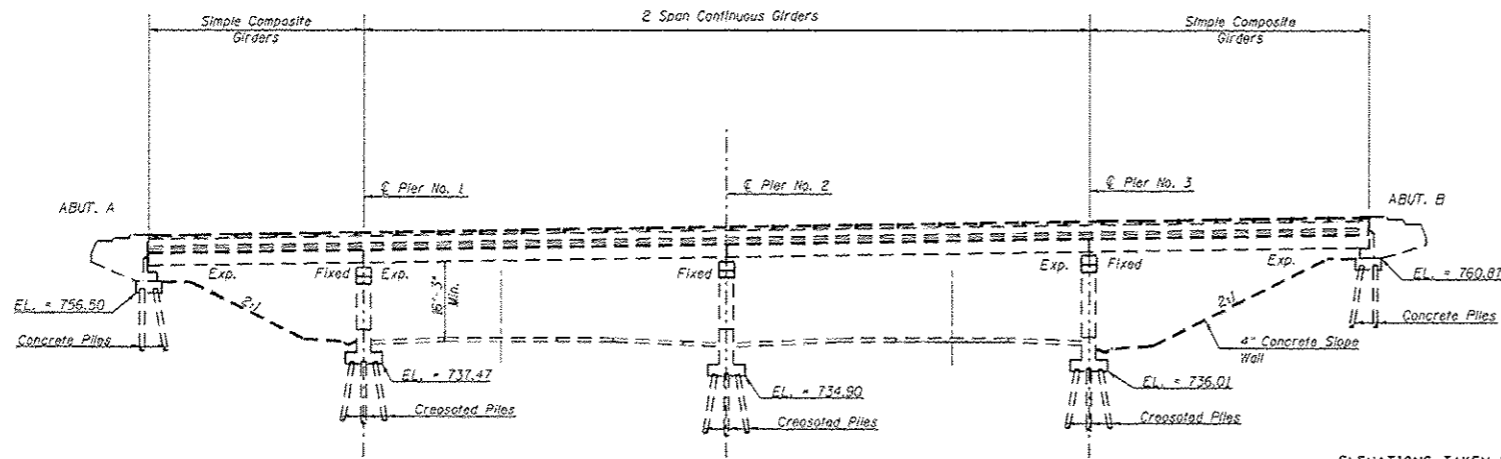
FILE NAME *	USER NAME * sharerjm	DESIGNED -	REVISED -	STATE OF ILLINOIS DEPARTMENT OF TRANSPORTATION	SUMMARY OF QUANTITIES				F.A.I. RTE.	SECTION	COUNTY	TOTAL SHEETS	SHEET NO.
pr\\11.084EB\INTEG.illinois.gov\PI\DOT\Documents\1007 Offices\District 5\Projects\057\DRAMA\Drawings\Hydraulics\78857-shs-500.dgn		CHECKED -	REVISED -		55	57-6HB-2(BR)	MCLEAN	31	5				
Default	PLOT SCALE * 48.0000' / in.	DATE -	REVISED -		SCALE:	SHEET 2	OF 2 SHEETS	STA.	TO STA.	CONTRACT NO. 70BS7 ILLINOIS FED. AID PROJECT			
	PLOT DATE * 12/5/2016												

REV

STRUCTURE 057-0111 WAS ORIGINALLY BUILT IN 1963 AS SBI ROUTE 119, SECTION 57-6HB-2 AT STATION 539+01.45 BY THE STATE OF ILLINOIS.

THE EXISTING STRUCTURE IS A FOUR SPAN STEEL BEAM STRUCTURE WITH A BACK-TO-BACK ABUTMENT LENGTH OF 263'-1/2". THE STRUCTURE MEASURES 26'-0" FROM FACE-TO-FACE OF PARAPET AND HAS AN OUT-TO-OUT WIDTH OF 31'-8". THE SUPERSTRUCTURE CONSISTS OF TWO SIMPLE AND TWO CONTINUOUS SPAN STEEL BEAMS SUPPORTING A 6 3/4" REINFORCED CONCRETE DECK. THE SUPERSTRUCTURE IS SUPPORTED BY CONCRETE PILE ABUTMENTS AND CREOSOTED PILE SUPPORTED PIERS. THE SLOPES ARE PROTECTED WITH CONCRETE SLOPE WALLS.

METHOD OF CONSTRUCTION: ROAD CLOSURE WITH MARKED LOCAL ROADS DETOUR.



ELEVATION VIEW

ELEVATIONS TAKEN FROM AS-BUILT PLANS AND ARE SHOWN FOR PERSPECTIVE ONLY.

GENERAL NOTES

PLAN DIMENSIONS AND DETAILS RELATIVE TO THE EXISTING PLANS ARE SUBJECT TO NOMINAL CONSTRUCTION VARIATIONS. THE CONTRACTOR SHALL FIELD VERIFY EXISTING DIMENSIONS AND DETAILS AFFECTING NEW CONSTRUCTION AND MAKE NECESSARY APPROVED ADJUSTMENTS PRIOR TO CONSTRUCTION OR ORDERING OF MATERIALS. SUCH VARIATIONS SHALL NOT BE CAUSE FOR ADDITIONAL COMPENSATION FOR A CHANGE IN SCOPE OF WORK, HOWEVER, THE CONTRACTOR WILL BE PAID FOR THE QUANTITY ACTUALLY FURNISHED AT THE UNIT PRICE BID FOR THE WORK.

EXISTING REINFORCEMENT BARS EXTENDING INTO THE REMOVAL AREA SHALL BE CLEANED, STRAIGHTENED AND INCORPORATED INTO THE NEW CONSTRUCTION. COST INCLUDED WITH DECK SLAB REPAIR.

THE EXISTING STRUCTURAL STEEL COATING CONTAINS LEAD. THE CONTRACTOR SHALL TAKE THE APPROPRIATE PRECAUTIONS TO DEAL WITH THE PRESENCE OF LEAD ON THIS PROJECT.

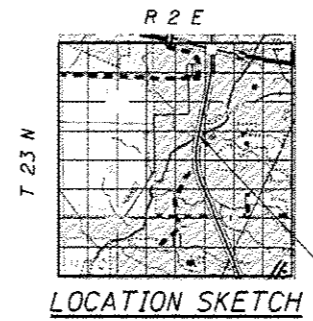
AREAS OF DECK REPAIRS SHOWN ARE ESTIMATED. THE ENGINEER SHALL SHOW ACTUAL LOCATIONS OF DECK REPAIRS ON AS-BUILT PLANS.

THE EXISTING STRUCTURE HAS BEEN FOUND TO CONTAIN NO ASBESTOS.

FIBERS ARE INCLUDED IN BRIDGE DECK LATEX CONCRETE OVERLAYS.

PROPOSED WORK

1. Perform Bridge Deck Scarification 3/4"
2. Perform Deck Slab repair.
3. Remove/Replace/Plug Select Floor Drains.
4. Perform Structural Concrete Repair.
5. Adjust existing expansion joints over Piers.
6. Place Polymer Concrete at abutment joints.
7. Place Latex Concrete 2 1/4"
8. Place HMA Surface at Approach Pavements.



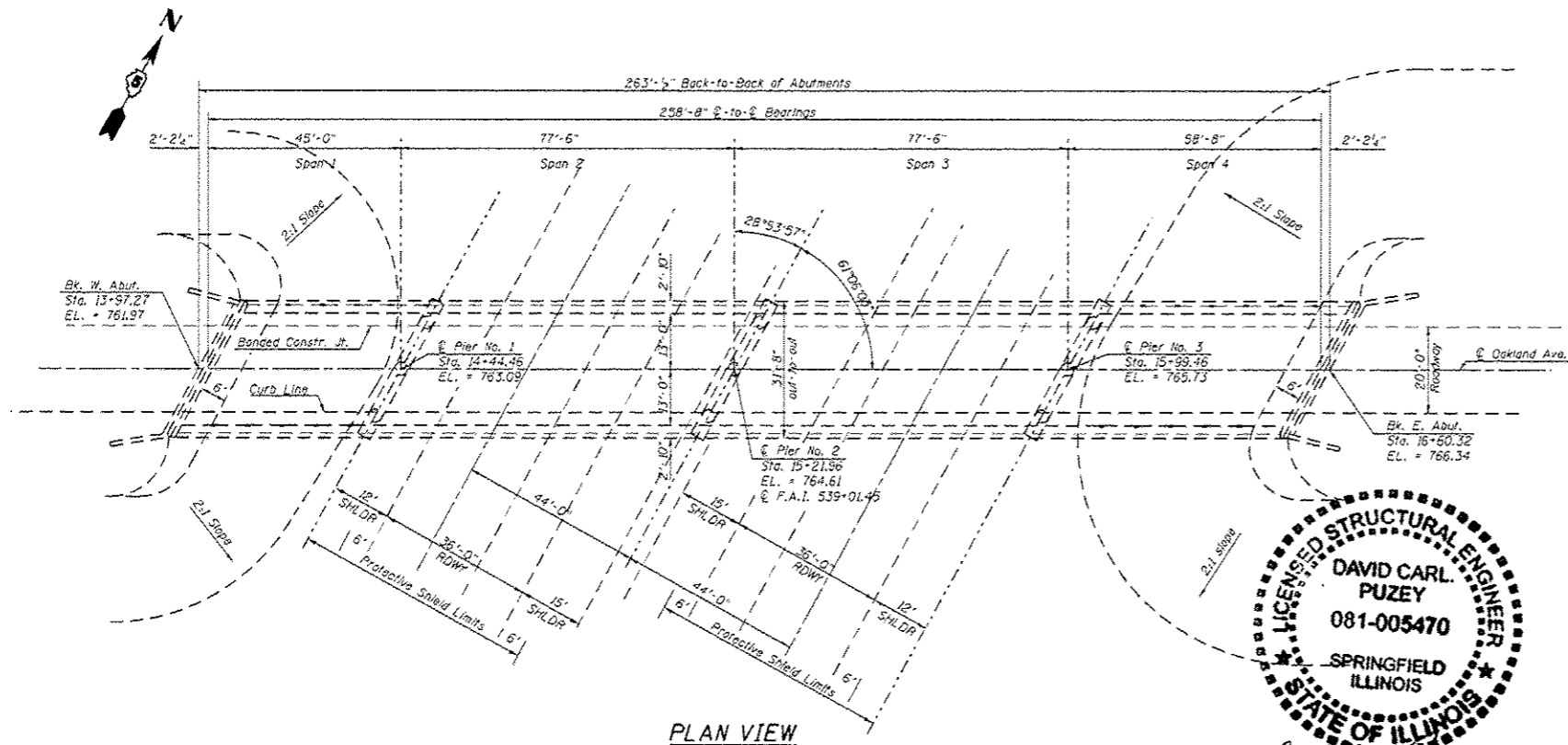
LOCATION SKETCH

INDEX OF SHEETS

1. General Plan and Elevation
2. Deck Cross Sections
5. Expansion Joint Details
4. Wearing Surface Plan
- 5.-8. Bridge Deck Patching Details
9. Floor Drain Details
10. Schedules of Patching
10. Structural Repair of Concrete Detail
- 11.-15. Detour Signing Detail
- 16.-21. As-Built Plans

TOTAL BILL OF MATERIAL

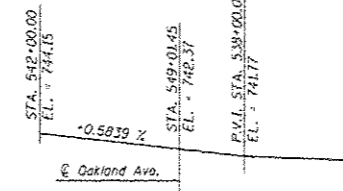
ITEM	UNIT	TOTAL
Protective Shield	Sq. Yd.	350.0
Floor Drains	Each	8.0
Bridge Deck Grooving	Sq. Yd.	692.0
Furnish & Erect Structural Steel	Pound	3,232.0
Plug Existing Deck Drains	Each	14.0
Bridge Deck Latex Conc. Overlay, 2 1/4"	Sq. Yd.	748.0
Bridge Deck Scarification 3/4"	Sq. Yd.	748.0
Structural Repair of Concrete 3/5"	Sq. Ft.	45.0
Approach Slab Repair, Partial Depth	Sq. Yd.	20.0
Deck Slab Repair, FD Type 1	Sq. Yd.	3.0
Deck Slab Repair, FD Type 2	Sq. Yd.	9.0
Polymer Concrete	Cu. Ft.	2.5



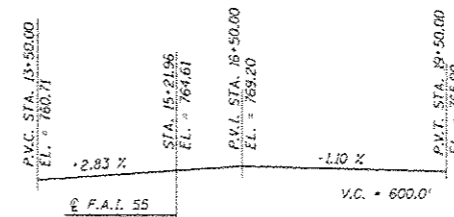
PLAN VIEW



David Carl Puzey 1/21/17
Expires 11/30/18



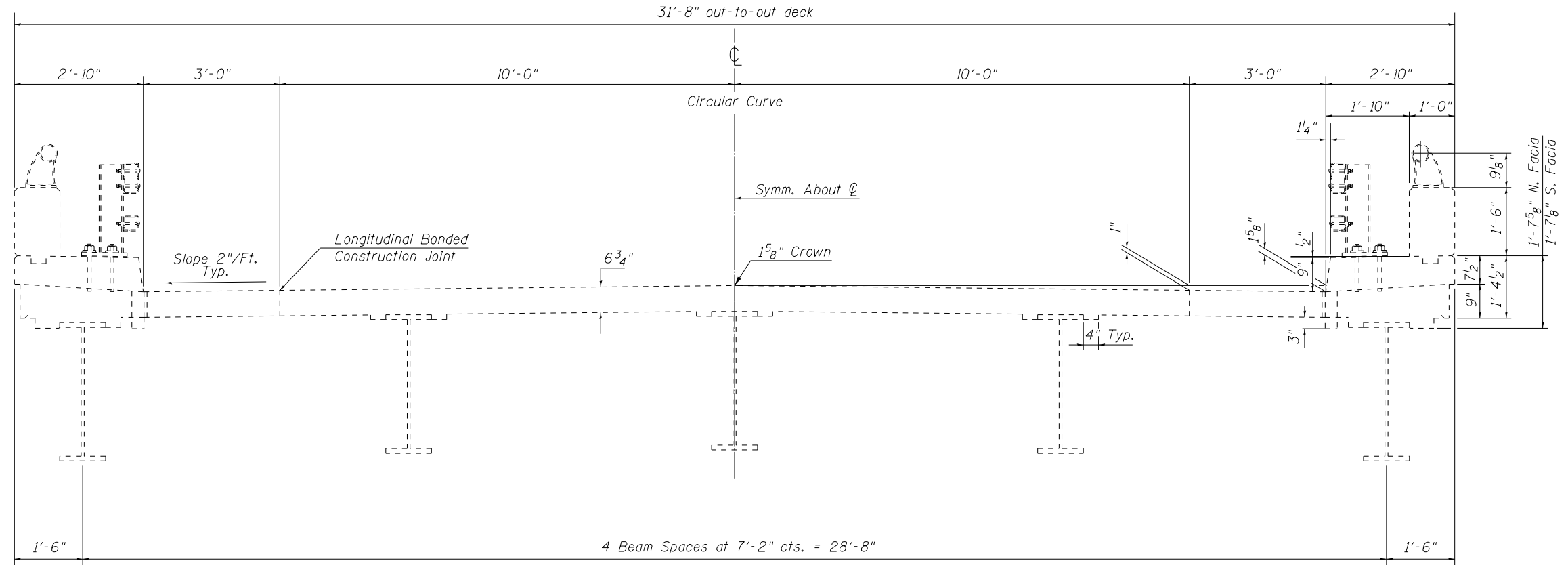
PROFILE GRADE F.A.I. 55



PROFILE GRADE W. OAKLAND AVE.

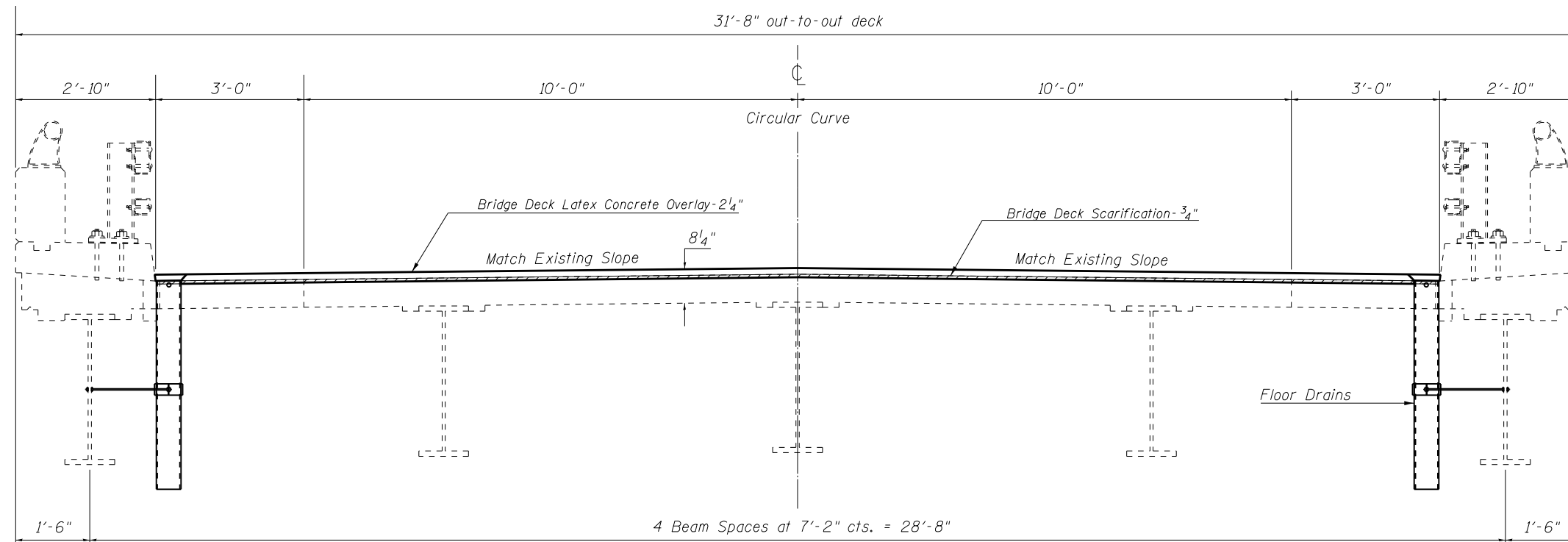
EXISTING DECK CROSS SECTION

S.N. 057-0111

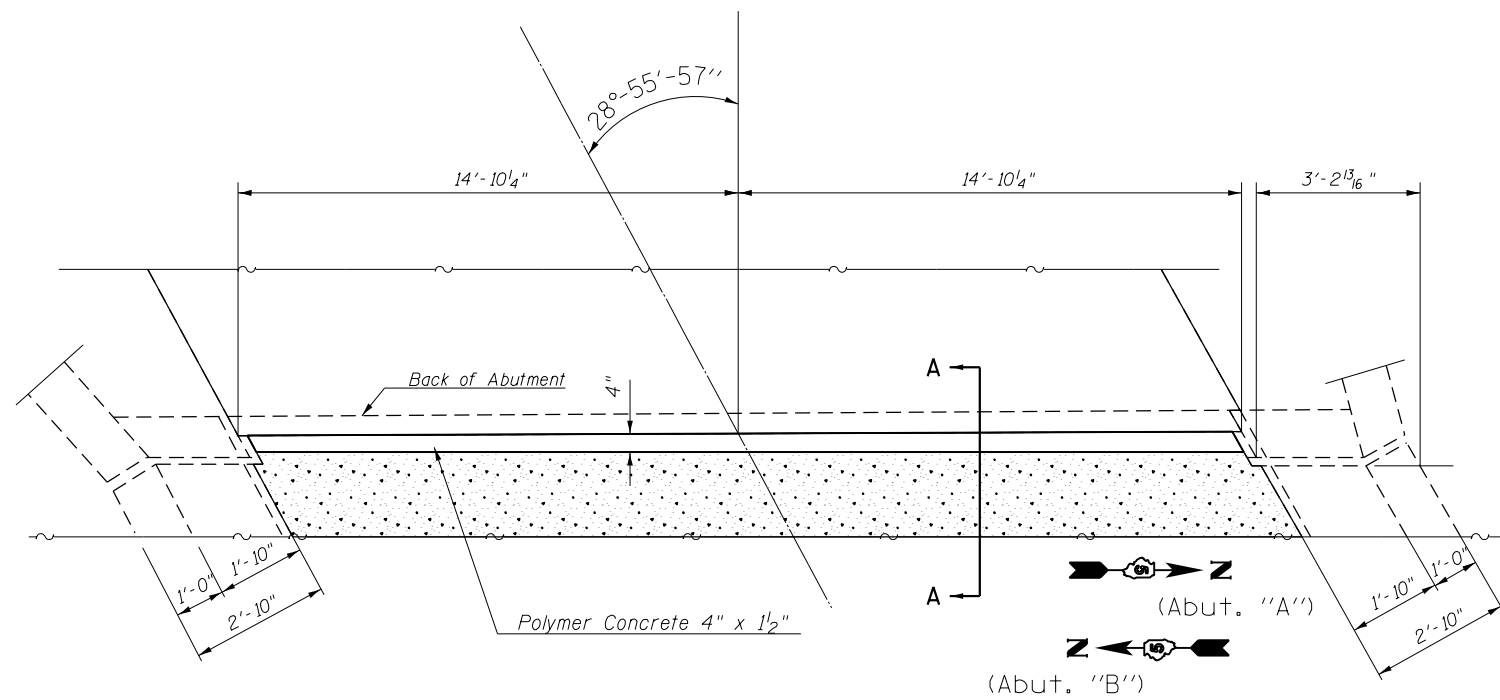


PROPOSED DECK CROSS SECTION

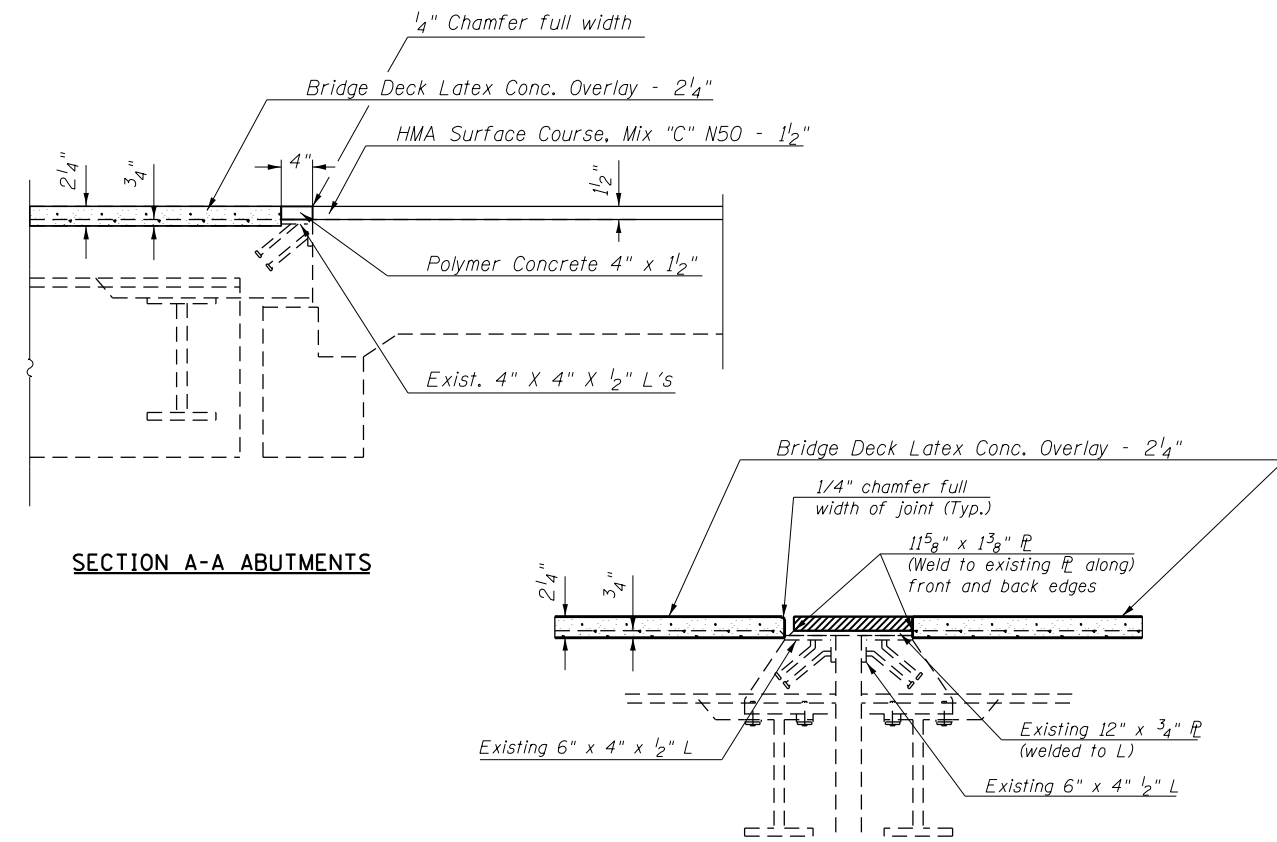
S.N. 057-0111



FILE NAME =	USER NAME = shererjm	DESIGNED - JMS	REVISED -	STATE OF ILLINOIS DEPARTMENT OF TRANSPORTATION	DECK CROSS SECTIONS S.N. 057-0111			F.A.I. R.T.E.	SECTION	COUNTY	TOTAL SHEETS	SHEET NO.
p:\11\084EBIDINTEG.illinois.gov\PIWIDOT\Documents\IDOT Offices\District 5\Projects\057-REPAIR\057-REPAIR\Hydro\MS\70B57-RepairPlans\		CHECKED -	REVISED -		55	57-6HB-2(BR)	MCLEAN	31	7			
PLOT SCALE = 40.0000' / in.		DATE - 012915	REVISED -		CONTRACT NO. 70B57			ILLINOIS FED. AID PROJECT				
PLOT DATE = 11/16/2016					SCALE: None	SHEET NO. 2 OF 10 SHEETS	STA.	TO STA.				

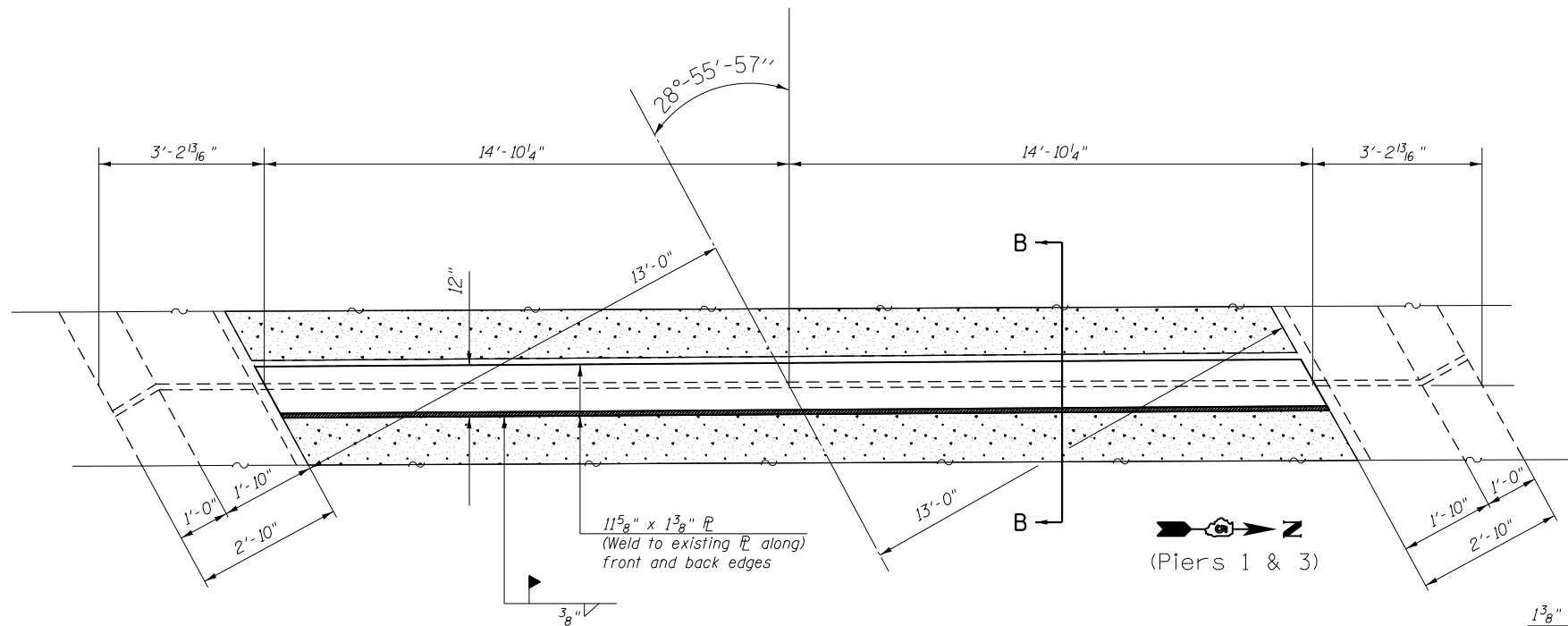


PLAN OF EXPANSION GUARD DETAIL AT ABUTMENTS

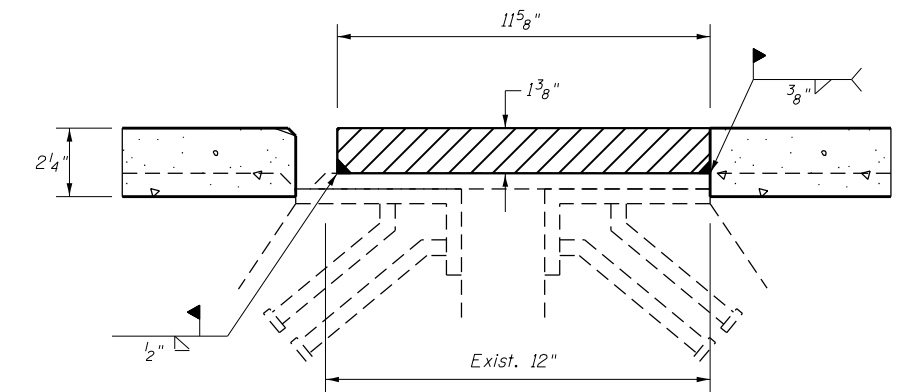


SECTION A-A ABUTMENTS

SECTION B-B PIERS 1 & 3



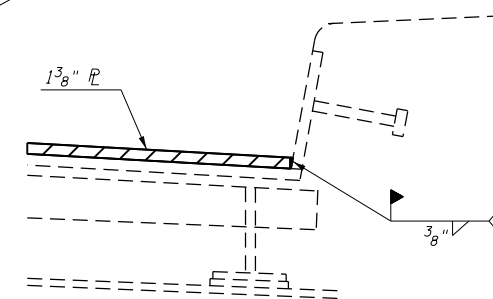
PLAN OF EXPANSION GUARD DETAIL AT PIERS 1 & 3



Note: New Structural Steel shall be cleaned and painted according to section 506. See article 506.07 for cleaning and article 506.08 for painting.

See Cleaning and Painting Contact Surface Areas of Existing Steel Structures.

DETAIL A PLATE



DETAIL B AT CURB

BILL OF MATERIALS

ITEM	UNIT	TOTAL
FURNISH & ERECT STRUCTURAL STEEL	POUND	3,232.0
POLYMER CONCRETE	CU FT	2.5

FILE NAME =	USER NAME = shererjm	DESIGNED - JMS	REVISED -
pw:\IL\084EBIDINTEG.illinois.gov\PIWID\Documents\DOT Offices\District 5\Projects\0577084EBID\Hydro\JMS\70857-RepairPlans\REVISED -			
PLOT SCALE = 40.0000' / in.	CHECKED -	REVISIED -	
PLOT DATE = 11/16/2016	DATE - 012915	REVISIED -	

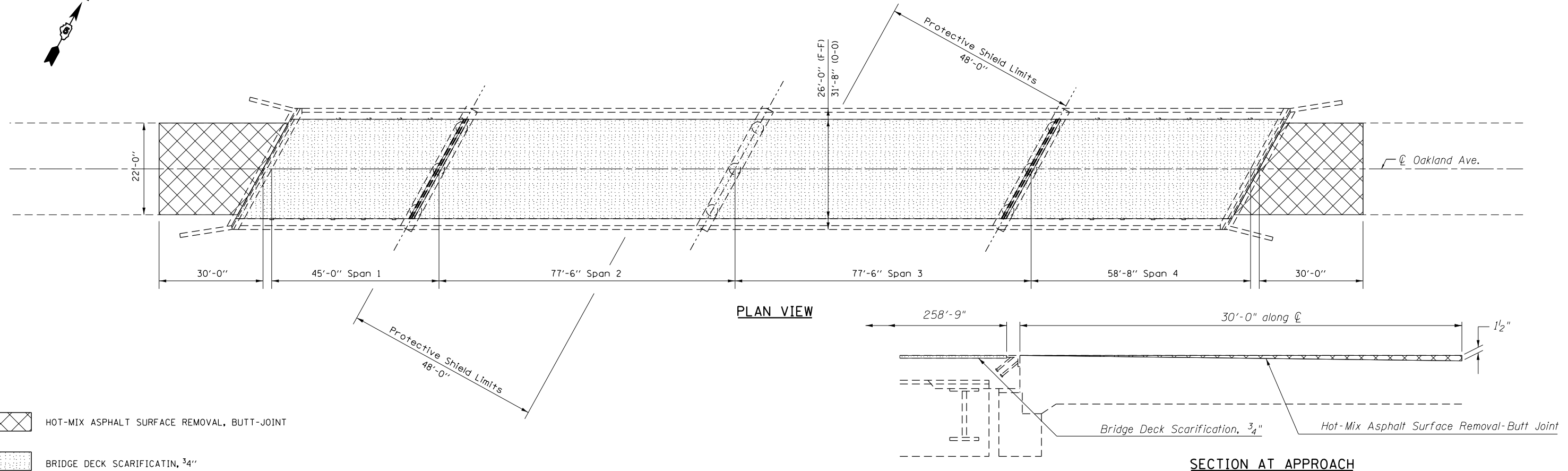
STATE OF ILLINOIS
DEPARTMENT OF TRANSPORTATION

EXPANSION JOINT DETAILS
S.N. 057-0111

SCALE: None SHEET NO. 3 OF 10 SHEETS STA. TO STA.

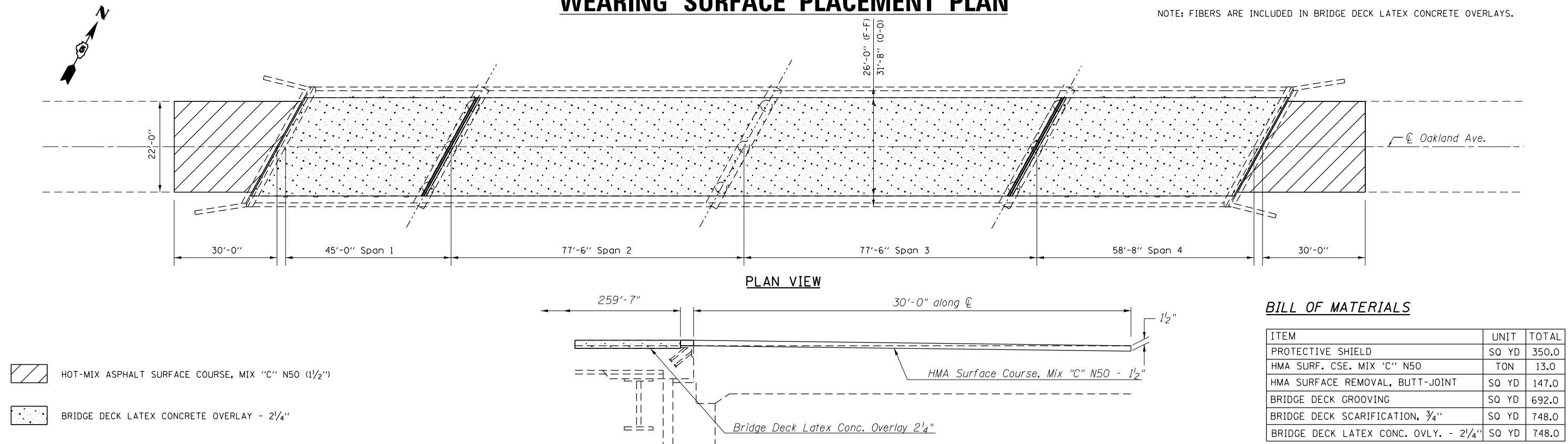
F.A.I. RE.	SECTION	COUNTY	TOTAL SHEETS	SHEET NO.
55	57-6HB-2(BR)	MCLEAN	31	8
CONTRACT NO. 70B57				
ILLINOIS FED. AID PROJECT				

BRIDGE DECK SCARIFICATION PLAN



WEARING SURFACE PLACEMENT PLAN

NOTE: FIBERS ARE INCLUDED IN BRIDGE DECK LATEX CONCRETE OVERLAYS.

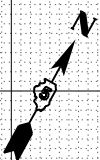


BILL OF MATERIALS

ITEM	UNIT	TOTAL
PROTECTIVE SHIELD	SQ YD	350.0
HMA SURF. CSE. MIX "C" N50	TON	13.0
HMA SURFACE REMOVAL, BUTT-JOINT	SQ YD	147.0
BRIDGE DECK GROOVING	SQ YD	692.0
BRIDGE DECK SCARIFICATION, 3/4"	SQ YD	748.0
BRIDGE DECK LATEX CONC. OVLY. - 2 1/4"	SQ YD	748.0

S.N. 057-0111 SPAN 3

77'-6"

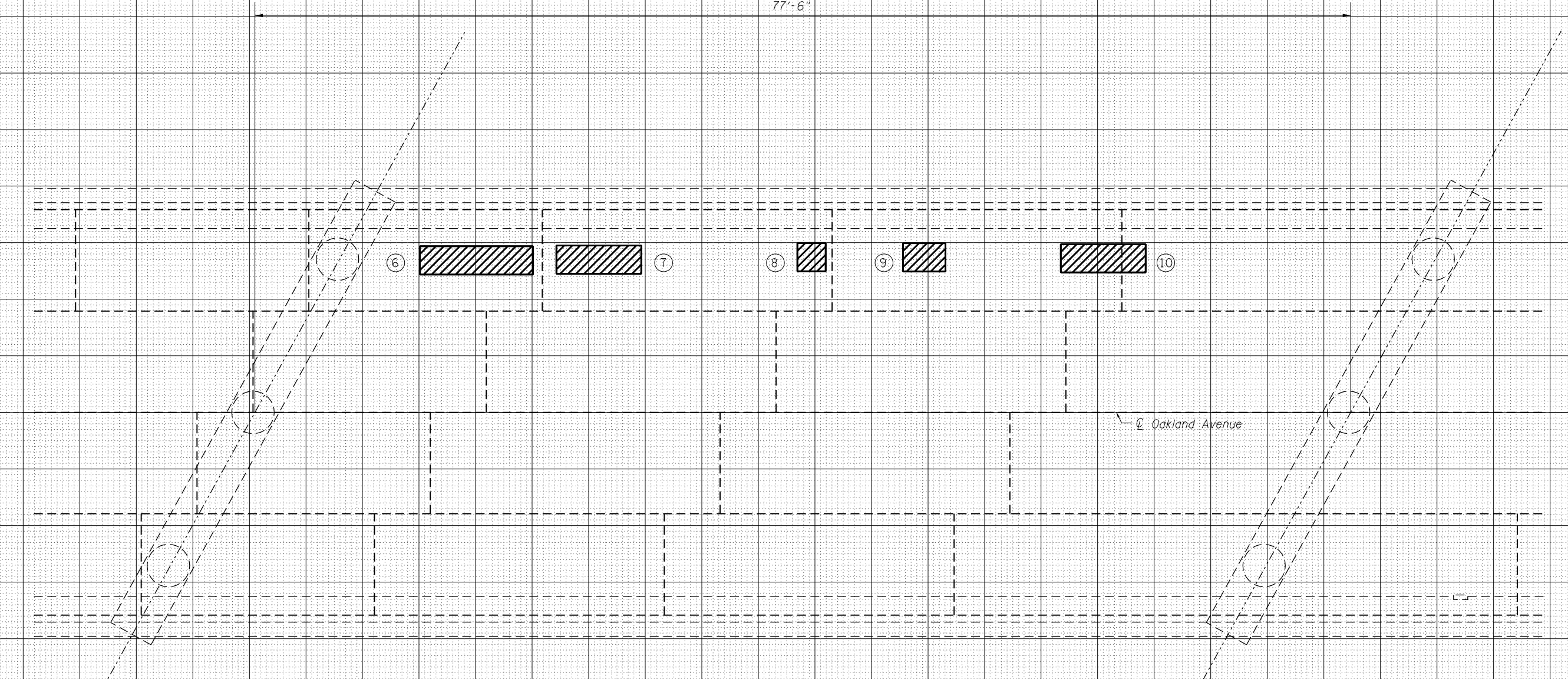


20
15
10
5
0
5
10
15
20
25

0 5 10 15 20 25 30 35 40 45 50 55 60 65 70 75 80 85 90 95 100 105 110

FINAL SURVEY NO.	SURVEYED PLOTTED	DATE
NOTE BOOK	TEMPLATE	
AREAS CHECKED	AREAS CHECKED	

ORIGINAL SURVEY NO.	SURVEYED PLOTTED	DATE
NOTE BOOK	TEMPLATE	
AREAS CHECKED	AREAS CHECKED	



LEGEND

	PLUG EXISTING FLOOR DRAINS		DECK SLAB REPAIR (FULL-DEPTH)
	FLOOR DRAINS TO BE REPLACED		

FILE NAME =	USER NAME = shererjm	DESIGNED -	REVISED -
p:\11084EBIDINTEG\Illinois.gov\PIDOT\Documents\DOT Offices\District 5\Projects\0570857\CADD\Hydraulics\70857-RepairPlans.dgn		DRAWN	REVISED -
Default	PLOT SCALE = 40.0000' / in.	CHECKED -	REVISED -
	PLOT DATE = 11/16/2016	DATE -	REVISED -

**STATE OF ILLINOIS
DEPARTMENT OF TRANSPORTATION**

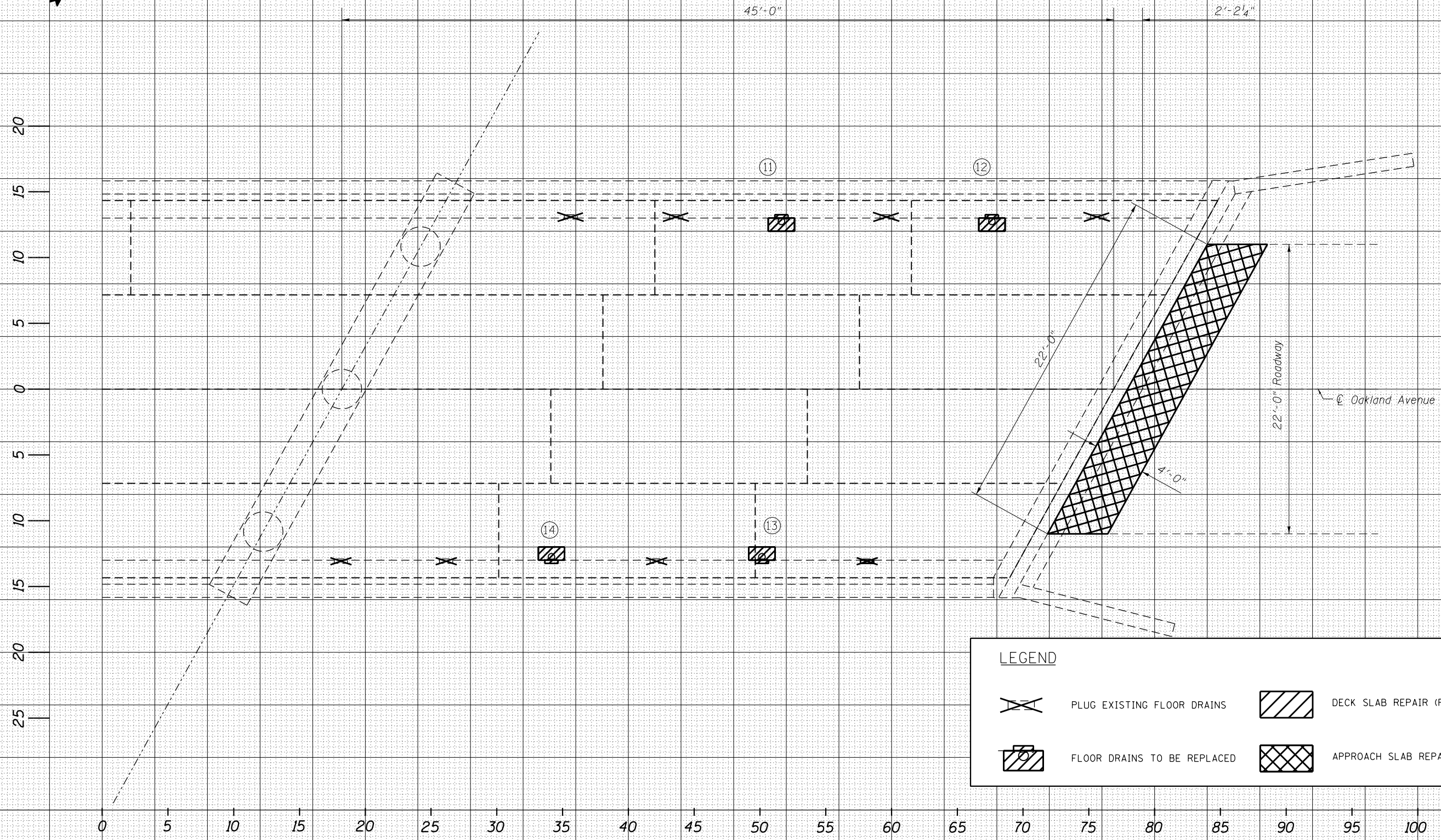
BRIDGE DECK PATCHING DETAIL			
S.N. 057-0111			
SCALE: 1" = 5'	SHEET 7	OF 10 SHEETS	STA. TO STA.

F.A.I. RTE.	SECTION	COUNTY	TOTAL SHEETS	SHEET NO.
55	57-6HB-2(BR)	MCLEAN	31	12
CONTRACT NO. 70B57				
ILLINOIS FED. AID PROJECT				

S.N. 057-0111 SPAN 4

DATE	
BY	
FINAL SURVEY	SURVEYED
NOTE BOOK	PLOTTED
NO.	TEMPLATE
	AREAS
	CHECKED

DATE	
BY	
ORIGINAL SURVEY	SURVEYED
NOTE BOOK	PLOTTED
NO.	TEMPLATE
	AREAS
	CHECKED



LEGEND

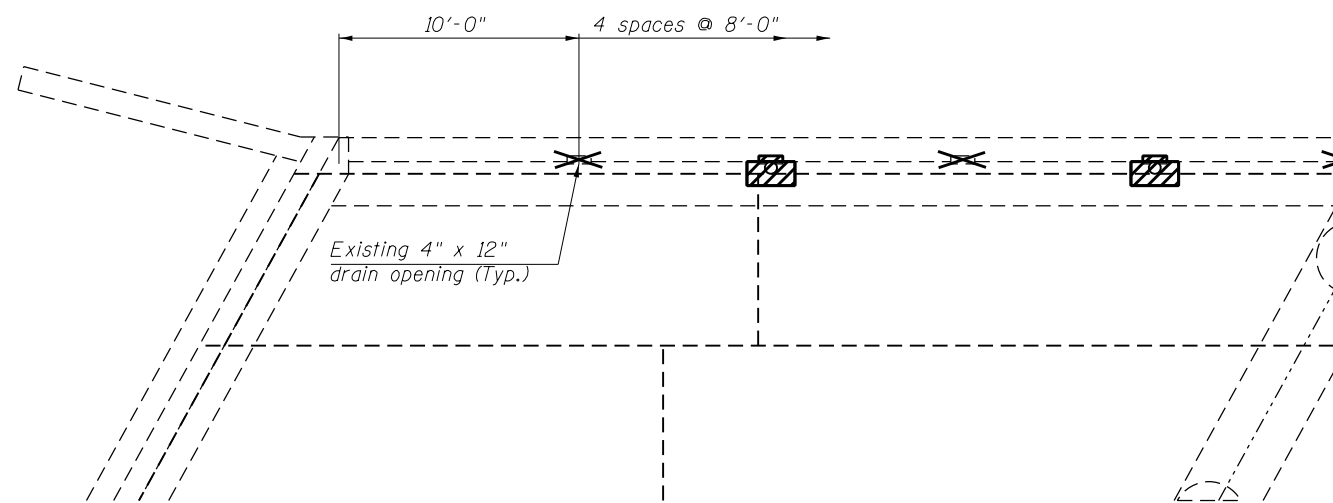
	PLUG EXISTING FLOOR DRAINS		DECK SLAB REPAIR (FULL-DEPTH)
	FLOOR DRAINS TO BE REPLACED		APPROACH SLAB REPAIR (PARTIAL-DEPTH)

FILE NAME =	USER NAME = shererjm	DESIGNED -	REVISED -
\\IL084EBIDINTEG.illinois.gov\PIWIDOT\Documents\DOT Offices\District 5\Projects\0570857\CADD\Drawings\Hydraulics\70857-RepairPlans.dgn		REVISOR -	REVISOR -
Default	PLOT SCALE = 40.0000' / in.	CHECKED -	REVISOR -
	PLOT DATE = 11/16/2016	DATE -	REVISOR -

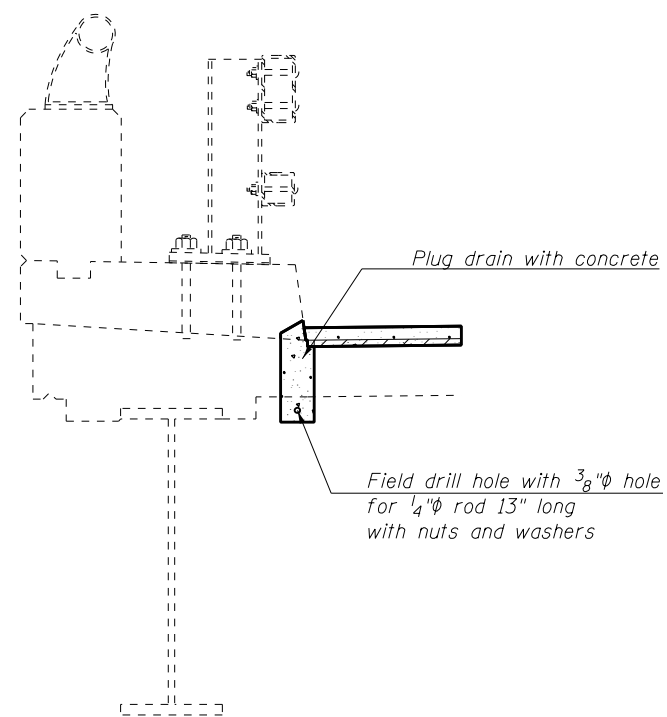
**STATE OF ILLINOIS
DEPARTMENT OF TRANSPORTATION**

BRIDGE DECK PATCHING DETAIL			
S.N. 057-0111			
SCALE: 1" = 5'	SHEET 8	OF 10 SHEETS	STA. TO STA.

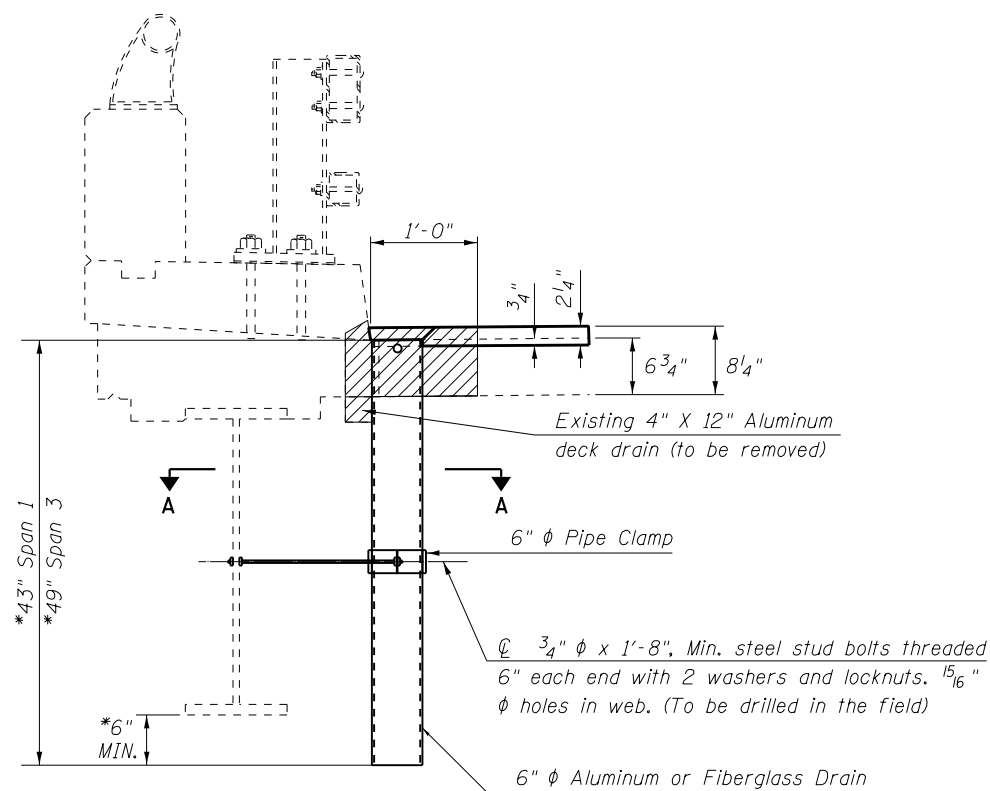
F.A.I. RTE.	SECTION	COUNTY	TOTAL SHEETS	SHEET NO.
55	57-6HB-2(BR)	MCLEAN	31	13
CONTRACT NO. 70B57				
ILLINOIS FED. AID PROJECT				



PLAN VIEW OF DRAINS
TYPICAL

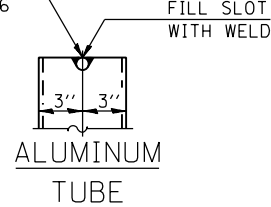


SECTION AT
EXISTING DRAIN
(DRAINS TO BE PLUGGED)



SECTION AT
PROPOSED DRAIN

1/2" Ø x 8" ALUMINUM BAR
ASTM B 211 ALLOY 6061-T6

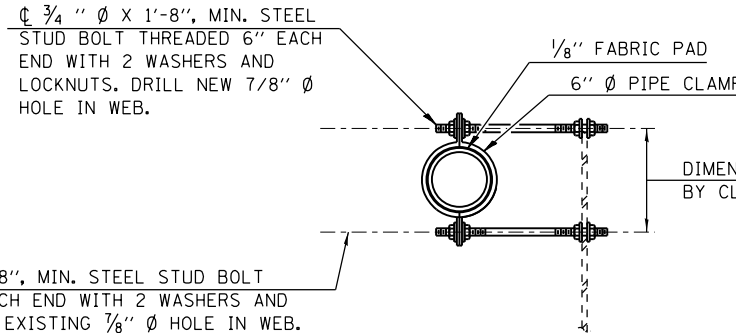
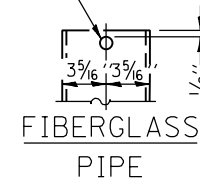


FILL SLOT WITH WELD

3/4" Ø x 1'-8", MIN. STEEL STUD BOLT THREADED 6" EACH END WITH 2 WASHERS AND LOCKNUTS. DRILL NEW 7/8" Ø HOLE IN WEB.

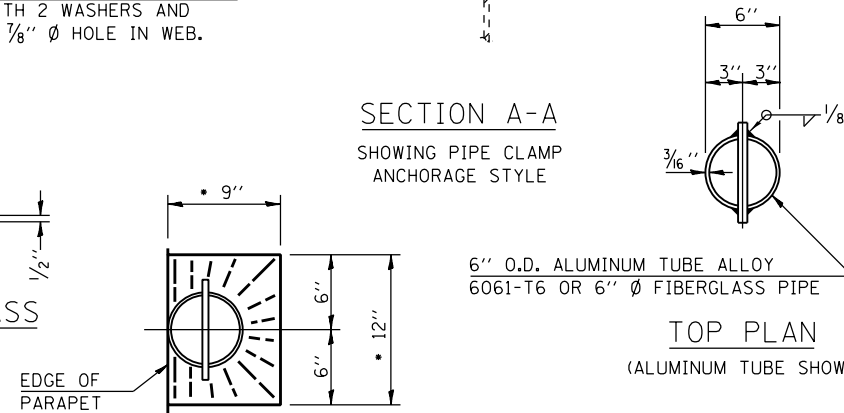
3/4" Ø x 1'-8", MIN. STEEL STUD BOLT THREADED 6" EACH END WITH 2 WASHERS AND LOCKNUTS. REUSE EXISTING 7/8" Ø HOLE IN WEB.

1/2" Ø x 8" FIBERGLASS REINFORCED PLASTIC REBAR



SECTION A-A
SHOWING PIPE CLAMP ANCHORAGE STYLE

6" O.D. ALUMINUM TUBE ALLOY 6061-T6 OR 6" Ø FIBERGLASS PIPE



TOP PLAN

• SLOPE TO DRAIN

LEGEND

- PLUG EXISTING FLOOR DRAINS
- FLOOR DRAINS TO BE REPLACED
- DECK SLAB REPAIR (FULL-DEPTH)

NOTES:

- FLOOR DRAINS NEED NOT BE PAINTED.
- FIBERGLASS PIPE SHALL CONFORM TO ASTM D 2996, WITH SHORT-TIME RUPTURE STRENGTH HOOP TENSILE STRESS OF 30,000 P.S.I. MINIMUM.
- ALL DIMENSIONS SHALL BE FIELD VERIFIED BY THE CONTRACTOR PRIOR TO ORDERING OF MATERIALS.
- THE GALVANIZED CLAMPING DEVICE, THREADED ROD, NUTS AND WASHERS SHALL BE GALVANIZED ACCORDING TO AASHTO M 232.
- THE MATERIAL USED TO PLUG THE DRAINS SHALL BE CLASS BS CONCRETE AND SHALL BE PLACED ACCORDING TO SECTION 503 OF THE STANDARD SPECIFICATIONS.
- COST OF REMOVAL OF EXISTING DRAINS IS INCLUDED IN DECK SLAB REPAIR.
- COST OF THREADED ROD, NUTS, WASHERS, CONCRETE AND LABOR SHALL BE INCLUDED AND PAID FOR AT THE CONTRACT UNIT PRICE EACH FOR PLUG EXISTING FLOOR DRAINS.

BILL OF MATERIALS

ITEM	UNIT	TOTAL
FLOOR DRAINS	EACH	8.0
PLUG EXIST. FLOOR DRAINS	EACH	14.0

FILE NAME =	USER NAME = shererjm	DESIGNED - JMS	REVISED -
pw:\11\084EBID\INTEG.11\inois.gov\PI\DOT\Documents\DOT Offices\District 5\Projects\05770857-RepairPlans\REVISED -	DESIGNED - JMS	REVISED -	REVISED -
PLOT SCALE = 40.0000' / in.	CHECKED -	REVISED -	REVISED -
PLOT DATE = 11/16/2016	DATE - 012915	REVISED -	REVISED -

STATE OF ILLINOIS
DEPARTMENT OF TRANSPORTATION

FLOOR DRAIN DETAILS
S.N. 057-0111

SCALE: None SHEET NO. 9 OF 10 SHEETS STA. TO STA.

F.A.I. RTE.	SECTION	COUNTY	TOTAL SHEETS	SHEET NO.
55	57-6HB-2(BR)	MCLEAN	31	14
CONTRACT NO. 70B57				
ILLINOIS FED. AID PROJECT				

PATCH NO.	SIZE		DECK SLAB REPAIR (FULL DEPTH T1)	DECK SLAB REPAIR (FULL DEPTH T2)
	LENGTH (FT)	WIDTH (FT)	SO YD	SO YD
1	2	1	0.2	
2	2	1	0.2	
3	3	2		0.7
4	3	2		0.7
5	8	2		1.8
6	8	2		1.8
7	6	2		1.3
8	2	2	0.4	
9	3	2		0.7
10	6	2		1.3
11	2	1	0.2	
12	2	1	0.2	
13	2	1	0.2	
14	2	1	0.2	
15	2	1	0.2	
16	2	1	0.2	

TOTAL =	2.2	8.3
---------	-----	-----

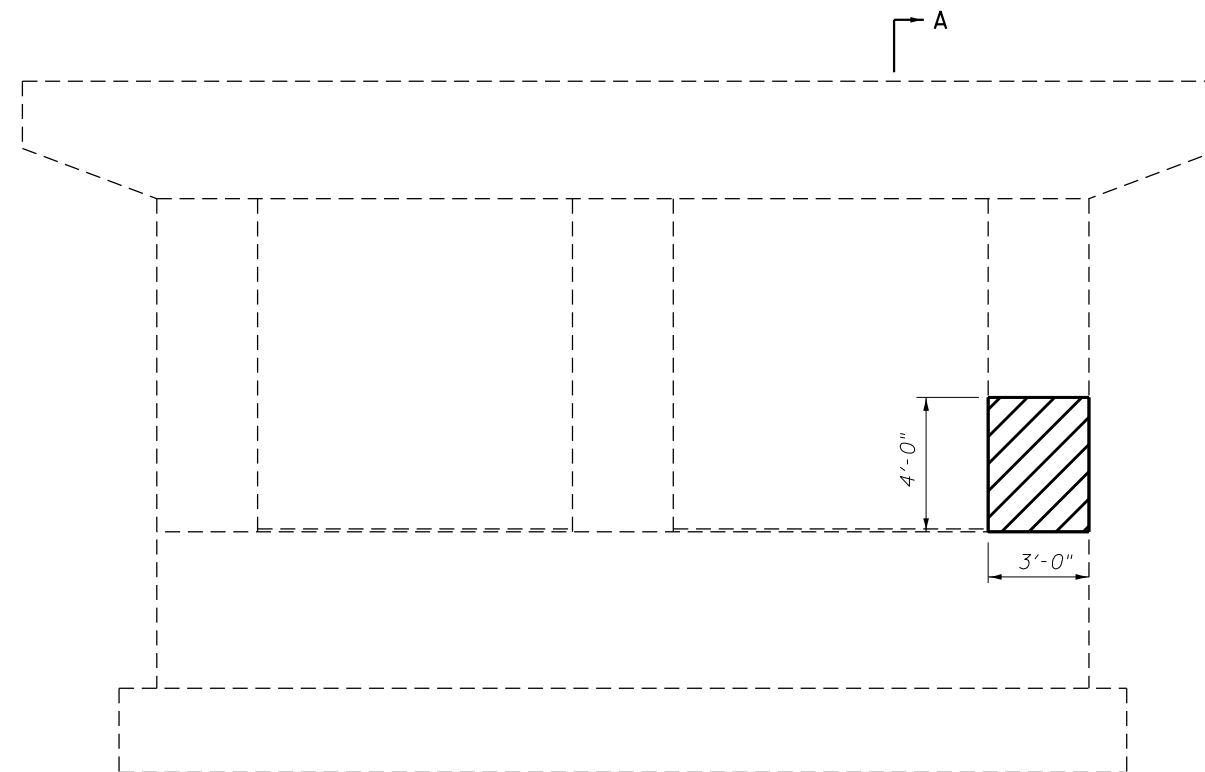
USE =	3.0	9.0
-------	-----	-----

NOTES:

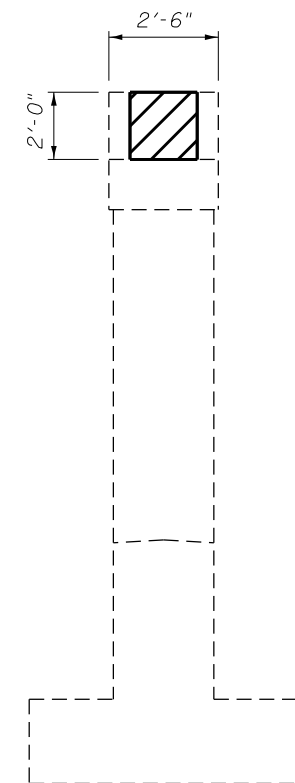
AREA OF DECK SLAB REPAIR HAVE BEEN ESTIMATED FROM MAY, 2014 DECK SURVEY. THE ACTUAL QUANTITY AND LOCATIONS SHALL BE DETERMINED BY THE ENGINEER. THE ENGINEER SHALL SHOW THE ACTUAL LOCATIONS OF THE DECK REPAIRS ON DECK PATCHING DETAIL SHEETS.

BILL OF MATERIALS

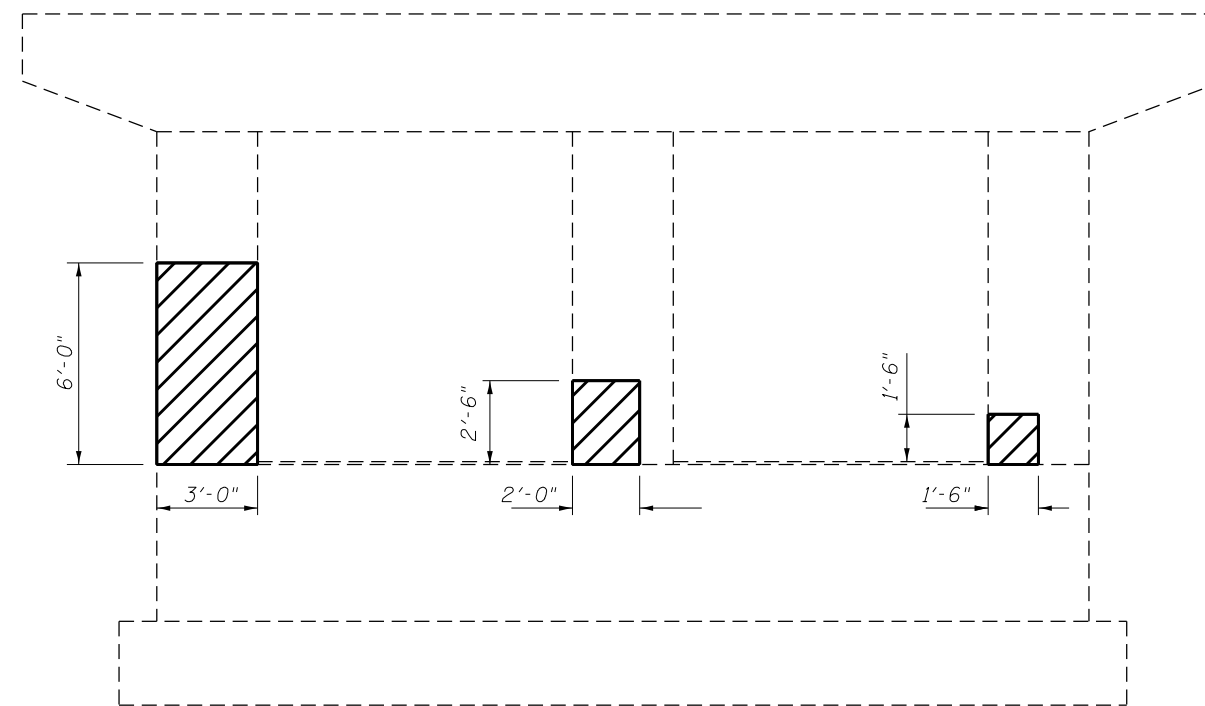
ITEM	UNIT	TOTAL
DECK SLAB REPAIR (FULL DEPTH, TYPE I)	SO YD	3.0
DECK SLAB REPAIR (FULL DEPTH, TYPE II)	SO YD	9.0
APPROACH SLAB REPAIR (PARTIAL DEPTH)	SO YD	20.0



ELEVATION PIER 1



SECTION A-A



ELEVATION PIER 3

BILL OF MATERIALS

ITEM	UNIT	TOTAL
STRUCTURAL REPAIR OF CONCRETE $\frac{1}{2}$ 5"	SO FT	45.0

FILE NAME =	USER NAME = shererjmjms	DESIGNED -	REVISED -
pw:\jll\084EBID\INTEG.illinois.gov\PIWIDOT\Documents\IDOT Offices\Dissemination\Projects\057-6HB-2\Drawings\Hydraulics\70B57-RepairPlans.dwg		CHECKED -	REVISED -
		DATE -	REVISED -

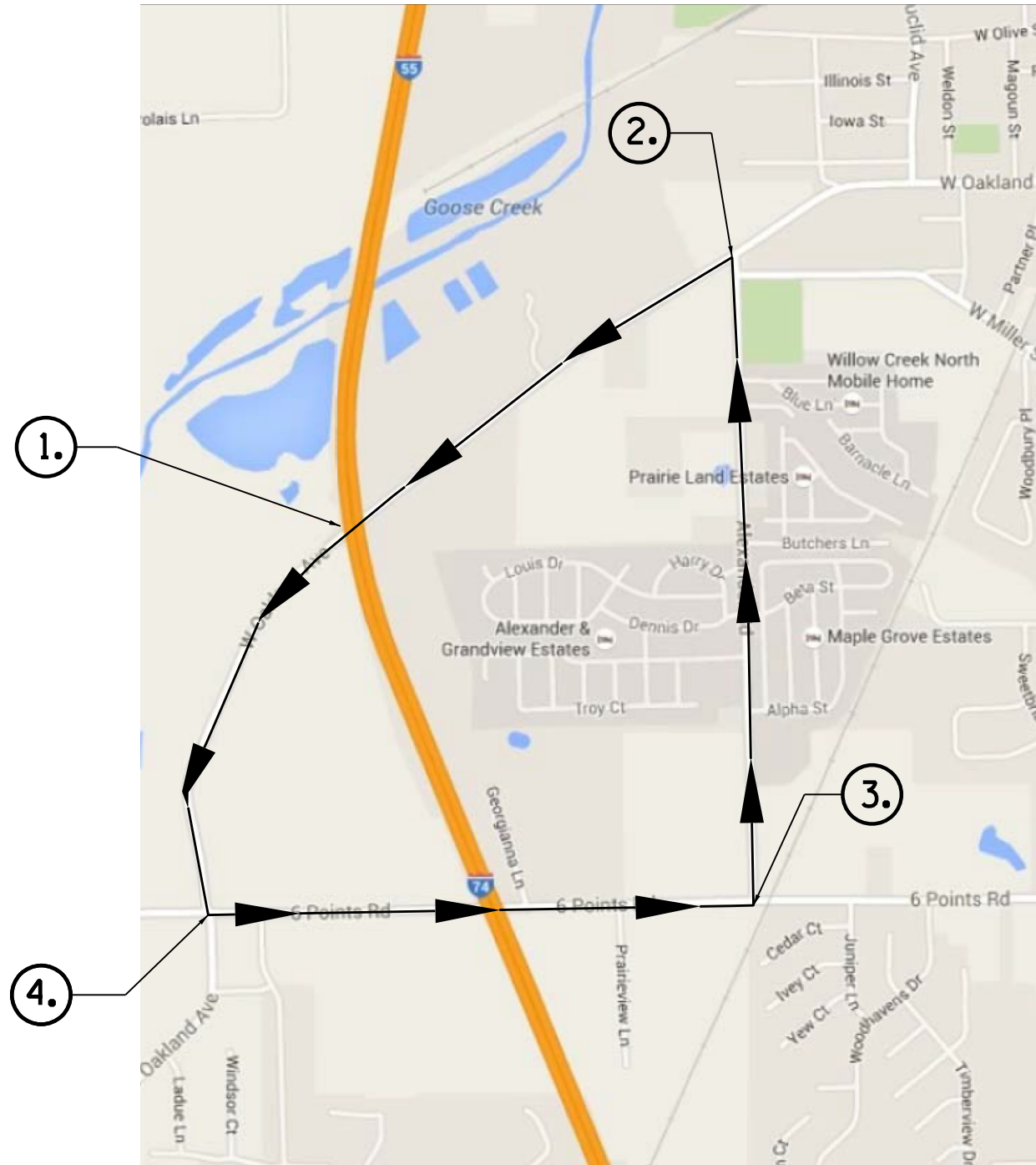
**STATE OF ILLINOIS
DEPARTMENT OF TRANSPORTATION**

**SCHEDULE OF DECK SLAB REPAIR/STRUCTURAL REPAIR OF CONCRETE
S.N. 057-0111**

SCALE: None SHEET NO. 10 OF 10 SHEETS STA. TO STA.

F.A.I. RTE.	SECTION	COUNTY	TOTAL SHEETS	SHEET NO.
55	57-6HB-2(BR)	MCLEAN	31	15
CONTRACT NO. 70B57				
ILLINOIS FED. AID PROJECT				

MARKED DETOUR ROUTE OVERVIEW

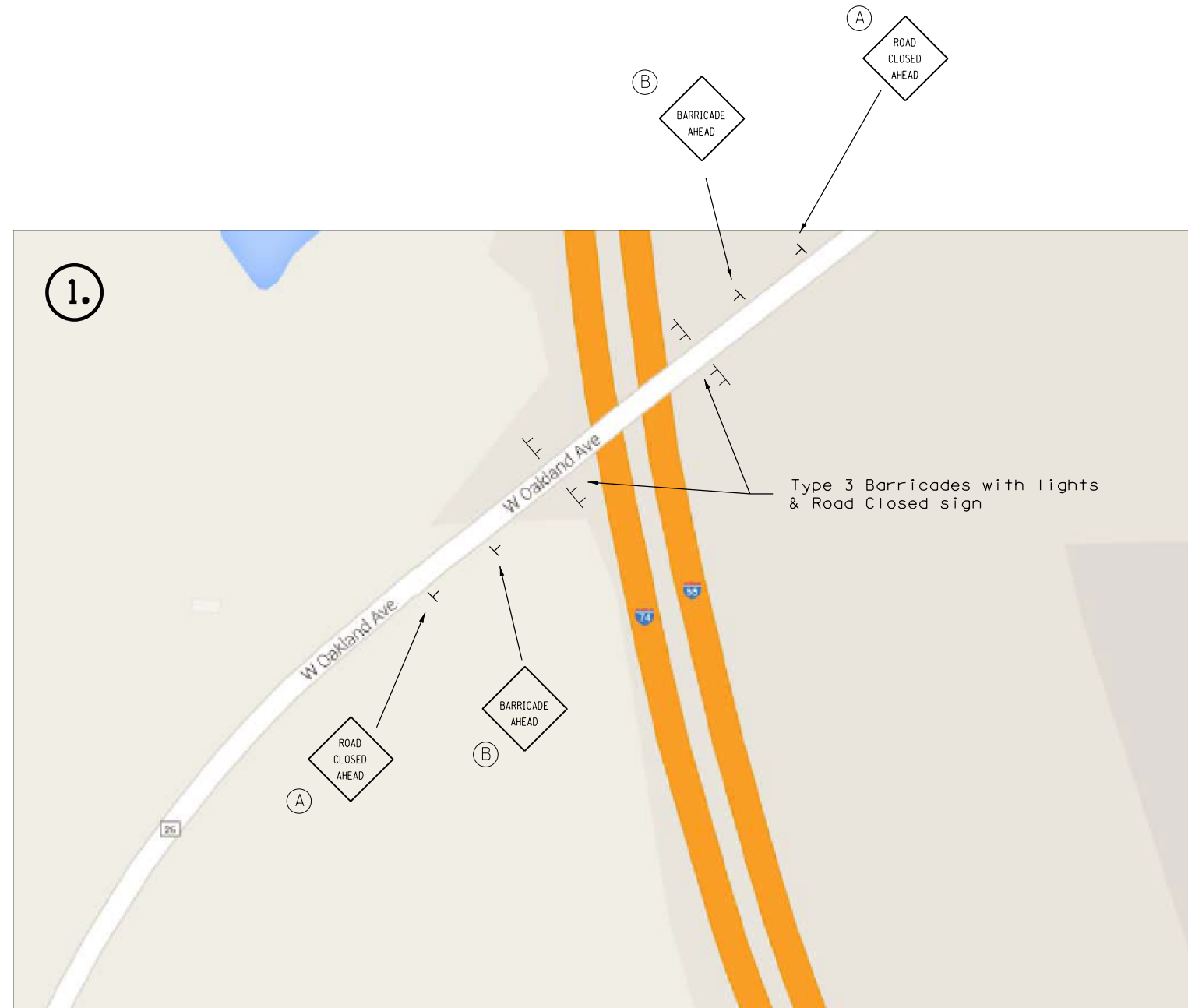


BILL OF MATERIALS

ITEM	UNIT	TOTAL
DETOUR SIGNING	L SUM	1.0

FILE NAME =	USER NAME = shererjm	DESIGNED - JMS	REVISED -	STATE OF ILLINOIS DEPARTMENT OF TRANSPORTATION	MARKED DETOUR DETAILS S.N. 057-0111			F.A.I. RTE. = 55	SECTION = 57-6HB-2(BR)	COUNTY = MCLEAN	TOTAL SHEETS = 31	SHEET NO. = 16
DRAWING DATA \Hydra\MS\70B57-RepairPlans					REVISIONS	SCALE: None	SHEET NO. 1 OF 5 SHEETS	STA.	TO STA.	CONTRACT NO. 70B57		
PLOT SCALE = 40.0000' / in.					CHECKED -	REVISIONS	ILLINOIS FED. AID PROJECT					
PLOT DATE = 11/16/2016					DATE - 012915	REVISIONS						

FIGURE A.



- Ⓐ Erect 1000' +/- from bridge
- Ⓑ Erect 500' +/- from bridge

DETAIL NOTE:

ALL DETOUR SIGN LOCATIONS ARE SUBJECT TO FIELD ADJUSTMENT IN CASE OF CONFLICTS. ANY ADJUSTMENTS WILL BE COORDINATED BY THE ENGINEER, THE CONTRACTOR, AND THE BUREAU OF OPERATIONS TRAFFIC CONTROL SUPERVISOR PRIOR TO ROAD CLOSURE.

FILE NAME =	USER NAME = shererjm	DESIGNED - JMS	REVISED -	STATE OF ILLINOIS DEPARTMENT OF TRANSPORTATION	MARKED DETOUR DETAILS S.N. 057-0111			F.A.I. RTE.	SECTION	COUNTY	TOTAL SHEETS	SHEET NO.
p:\11\084EBIDINTEG.illinois.gov\PWIDOT\Documents\DOT Offices\District 5\Projects\057-REPAIR\057-REPAIR\Hydra\MS\70B57-RepairPlans\		REVISIONS	REVISED -		55	57-6HB-2(BR)	MCLEAN	31	17			
PLOT SCALE = 40.0000' / in.	CHECKED -	REVISED -	REVISED -		CONTRACT NO. 70B57							
PLOT DATE = 11/16/2016	DATE - 012915	REVISED -	REVISED -		ILLINOIS FED. AID PROJECT							
				SCALE: None	SHEET NO. 2 OF 5 SHEETS	STA.	TO STA.					

FIGURE B.



Type 3 Barricades with lights & Road Closed sign



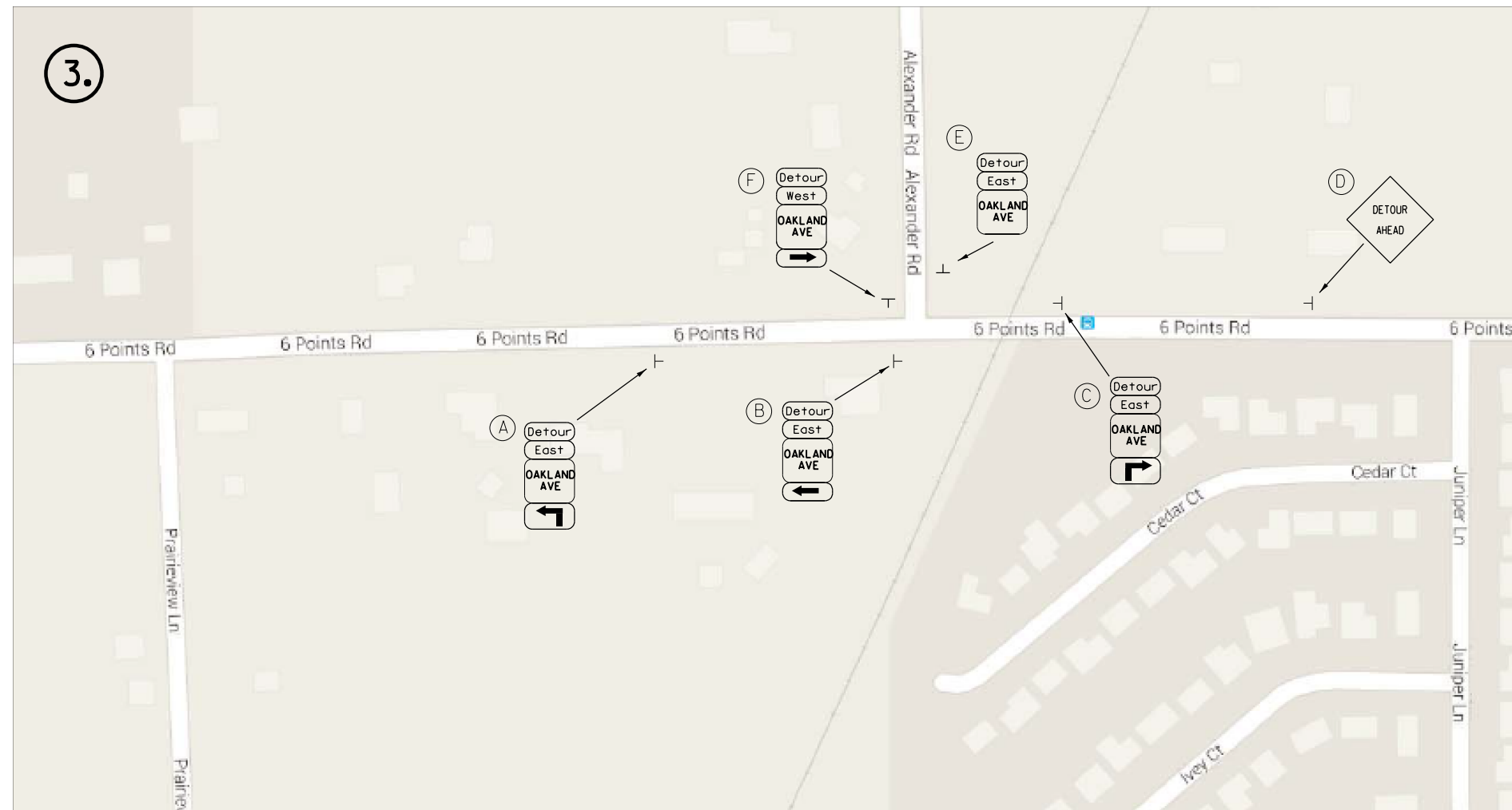
- Ⓐ Erect prior to Stockholm St.
- Ⓑ Erect 50' +/- from intersection
- Ⓒ Erect 300' +/- E. of Alexander Rd.
- Ⓓ Erect 600' +/- E. of Alexander Rd.
- Ⓔ Erect 1000' +/- E. of Alexander Rd.

DETAIL NOTE:

ALL DETOUR SIGN LOCATIONS ARE SUBJECT TO FIELD ADJUSTMENT IN CASE OF CONFLICTS. ANY ADJUSTMENTS WILL BE COORDINATED BY THE ENGINEER, THE CONTRACTOR, AND THE BUREAU OF OPERATIONS TRAFFIC CONTROL SUPERVISOR PRIOR TO ROAD CLOSURE.

FILE NAME =	USER NAME = shererjm	DESIGNED - JMS	REVISED -	STATE OF ILLINOIS DEPARTMENT OF TRANSPORTATION	MARKED DETOUR DETAILS S.N. 057-0111			F.A.I. RTE.	SECTION	COUNTY	TOTAL SHEETS	SHEET NO.
pw:\11\084EBIDINTEG.illinois.gov\PWIDOT\Documents\DOT Offices\District 5\Projects\057-6HB-2(BR)\DRAWING\Hydra\JMS\70B57-RepairPlans\		CHECKED -	REVISED -		55	57-6HB-2(BR)	MCLEAN	31	18			
PLOT SCALE = 40.0000' / in.		DATE - 012915	REVISED -		CONTRACT NO. 70B57							
PLOT DATE = 11/16/2016					ILLINOIS FED. AID PROJECT							
				SCALE: None	SHEET NO. 3 OF 5 SHEETS	STA.	TO STA.					

FIGURE C.



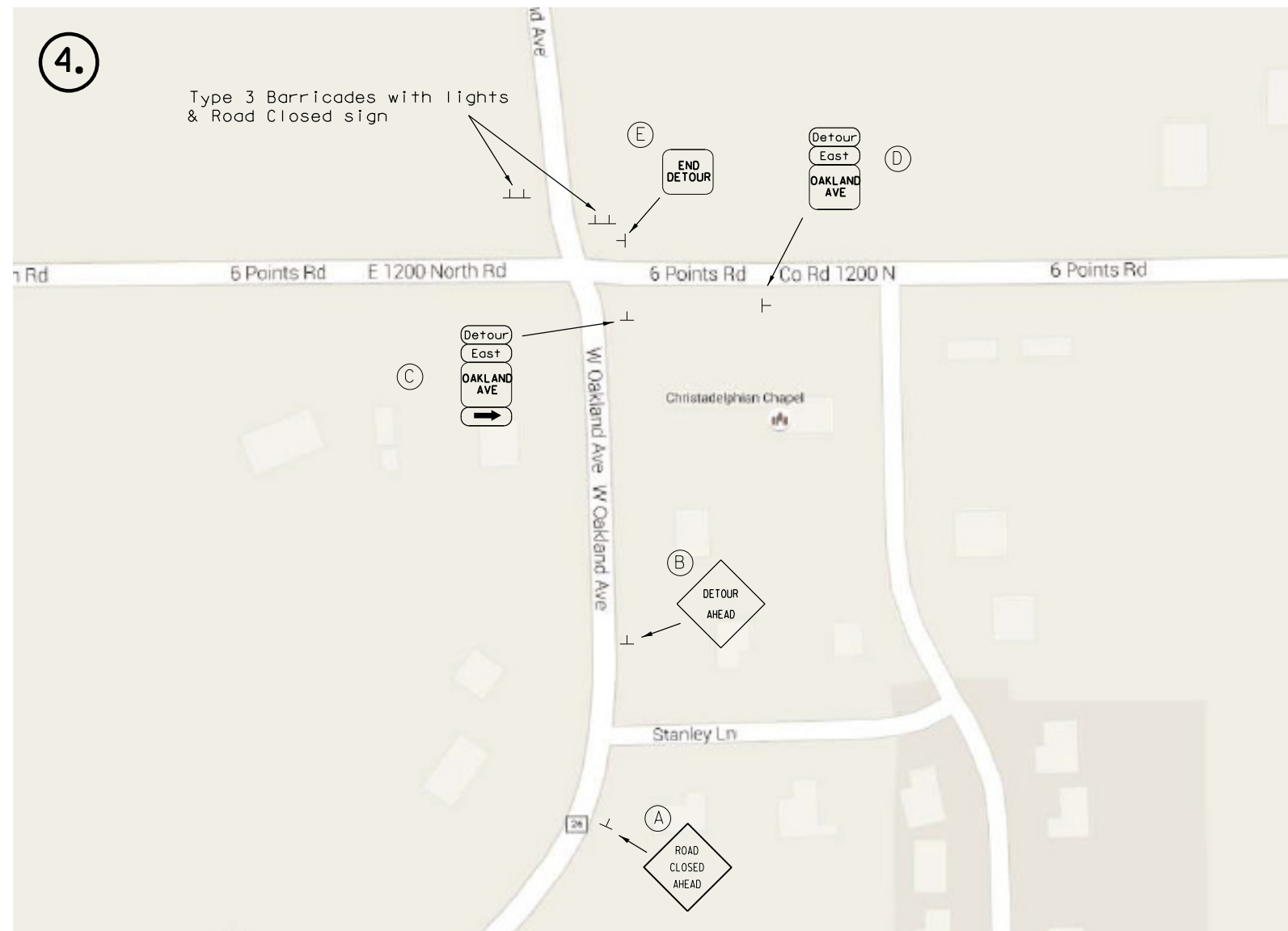
- Ⓐ Erect 350' +/- W. of Alexander Rd.
- Ⓑ Erect 50' +/- W. of Alexander Rd.
- Ⓒ Erect 200' +/- from Alexander Rd.
- Ⓓ Erect 250' +/- W. of Juniper Ln.
- Ⓔ Erect 100' +/- N. of Six Points
- Ⓕ Erect beside stop sign

DETAIL NOTE:

ALL DETOUR SIGN LOCATIONS ARE SUBJECT TO FIELD ADJUSTMENT IN CASE OF CONFLICTS. ANY ADJUSTMENTS WILL BE COORDINATED BY THE ENGINEER, THE CONTRACTOR, AND THE BUREAU OF OPERATIONS TRAFFIC CONTROL SUPERVISOR PRIOR TO ROAD CLOSURE.

FILE NAME =	USER NAME = shererjm	DESIGNED - JMS	REVISED -	STATE OF ILLINOIS DEPARTMENT OF TRANSPORTATION	MARKED DETOUR DETAILS S.N. 057-0111			F.A.I. RTE. = 55	SECTION = 57-6HB-2(BR)	COUNTY = MCLEAN	TOTAL SHEETS = 31	SHEET NO. = 19
DRAWING DATA: \Hydra\JMS\70B57-RepairPlans.dwg					REVISIONS:	SCALE: None	SHEET NO. 4 OF 5 SHEETS	STA.	TO STA.	CONTRACT NO. 70B57		
PLOT SCALE = 40.0000' / in.	CHECKED -	DATE - 012915	REVISED -		ILLINOIS FED. AID PROJECT							

FIGURE D.

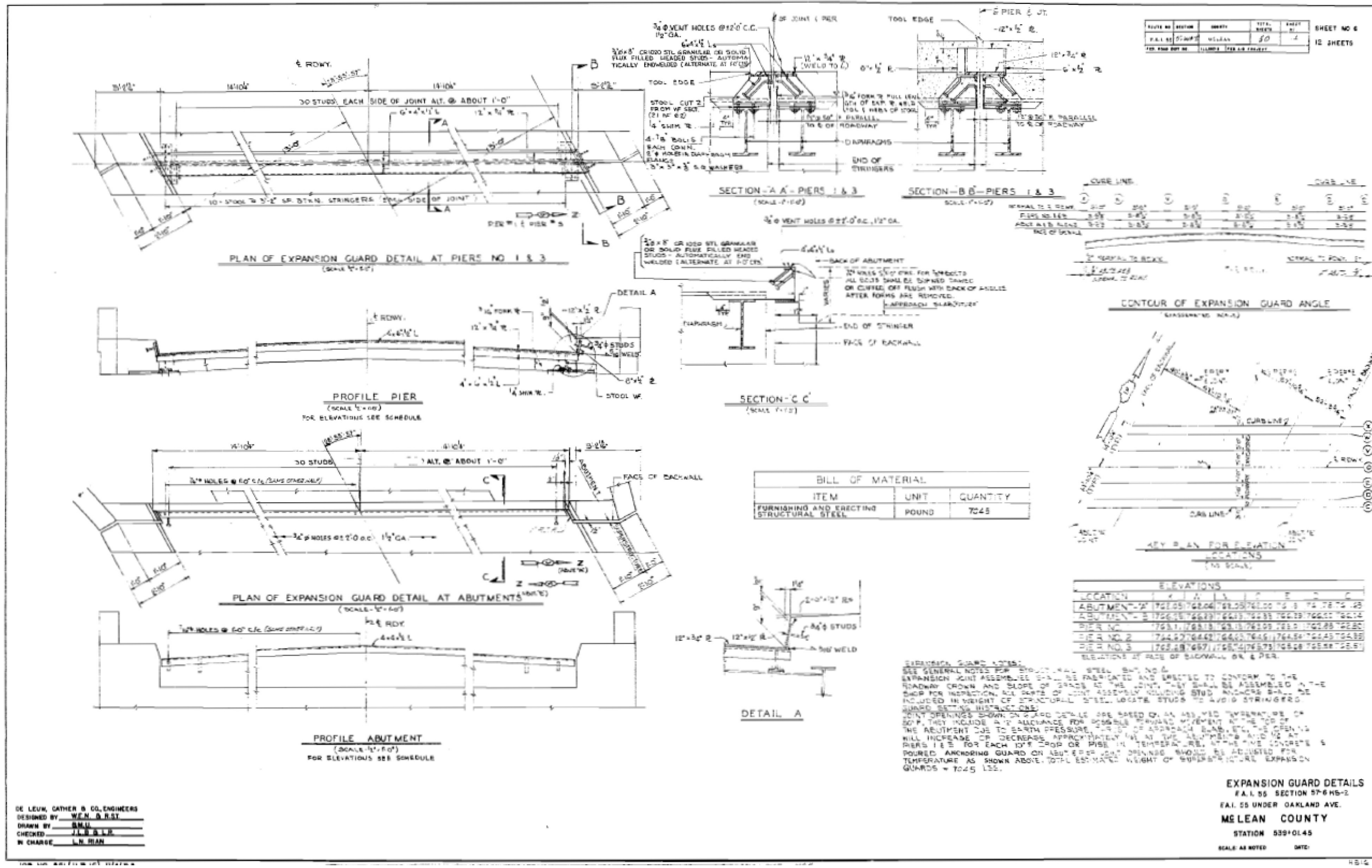


- (A) Erect 800' +/- from Six Points Rd.
- (B) Erect 400' +/- from Six Points Rd.
- (C) Erect beside stop sign @ intersection
- (D) Erect beside "Speed Limit 40" sign
- (E) Erect beside stop sign

DETAIL NOTE:

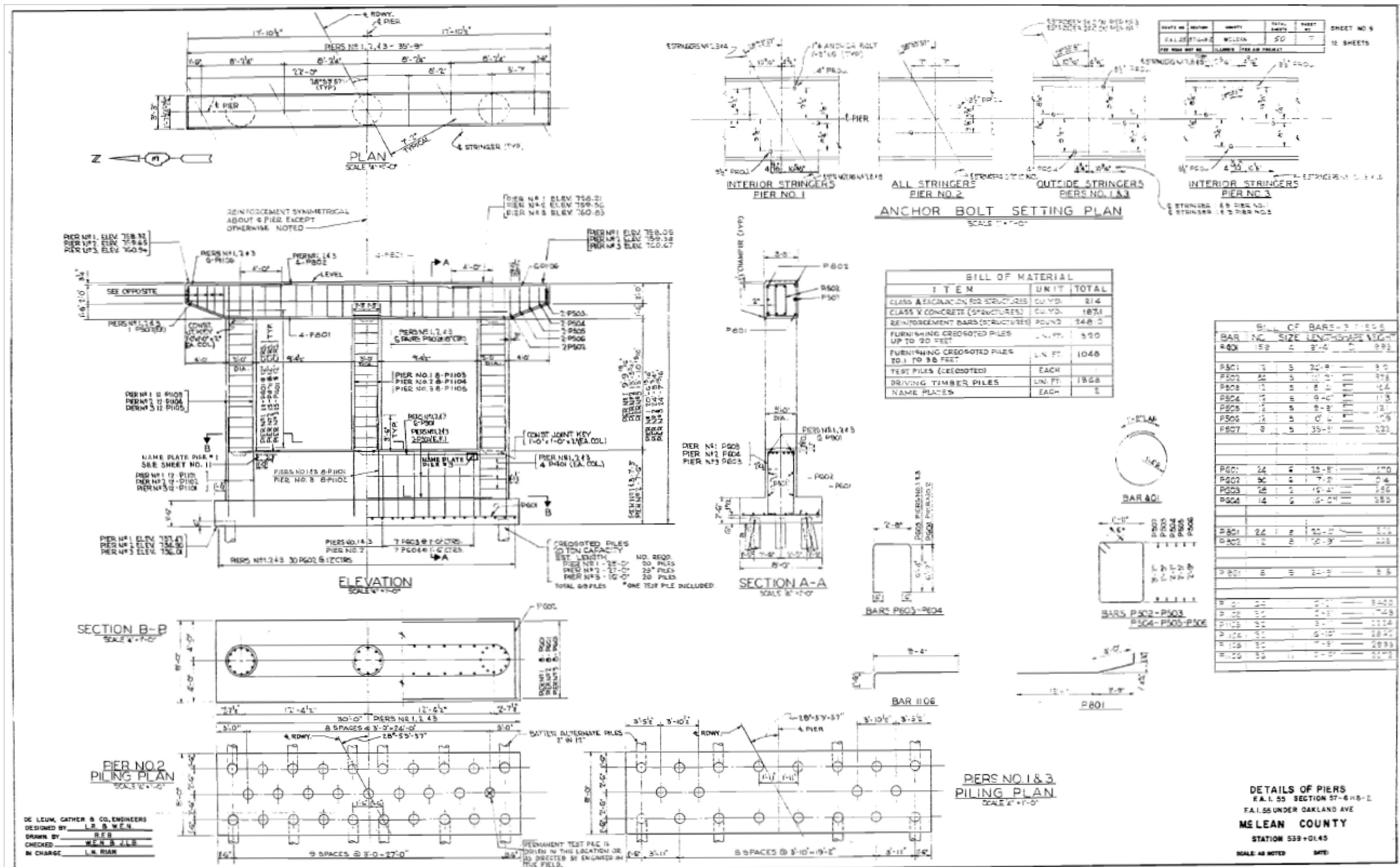
ALL DETOUR SIGN LOCATIONS ARE SUBJECT TO FIELD ADJUSTMENT IN CASE OF CONFLICTS. ANY ADJUSTMENTS WILL BE COORDINATED BY THE ENGINEER, THE CONTRACTOR, AND THE BUREAU OF OPERATIONS TRAFFIC CONTROL SUPERVISOR PRIOR TO ROAD CLOSURE.

FILE NAME =	USER NAME = shererjm	DESIGNED - JMS	REVISED -	STATE OF ILLINOIS DEPARTMENT OF TRANSPORTATION	MARKED DETOUR DETAILS S.N. 057-0111			F.A.I. RTÉ.	SECTION	COUNTY	TOTAL SHEETS	SHEET NO.
p:\11\084EBIDINTEG.illinois.gov\PWIDOT\Documents\DOT Offices\District 5\Projects\057-REPAIR\057-REPAIR\Hydra\MS\70B57-RepairPlans\		CHECKED -	REVISED -		55	57-6HB-2(BR)	MCLEAN	31	20			
PLOT SCALE = 40.0000' / in.		DATE - 012915	REVISED -		CONTRACT NO. 70B57							
PLOT DATE = 11/16/2016				SCALE: None	SHEET NO. 5 OF 5 SHEETS	STA.	TO STA.	ILLINOIS FED. AID PROJECT				



DE LEUN, GATHER & CO. ENGINEERS
DESIGNED BY W.E. B. RST
DRAWN BY R.M.U.
CHECKED J.L.B. L.R.
IN CHARGE L.N. RIAN

EXPANSION GUARD DETAILS
F.A.I. 55 SECTION 57-6 HS-2
F.A.I. 55 UNDER OAKLAND AVE.
MCLEAN COUNTY
STATION 539+01.45
SCALE: AS NOTED DATE: _____



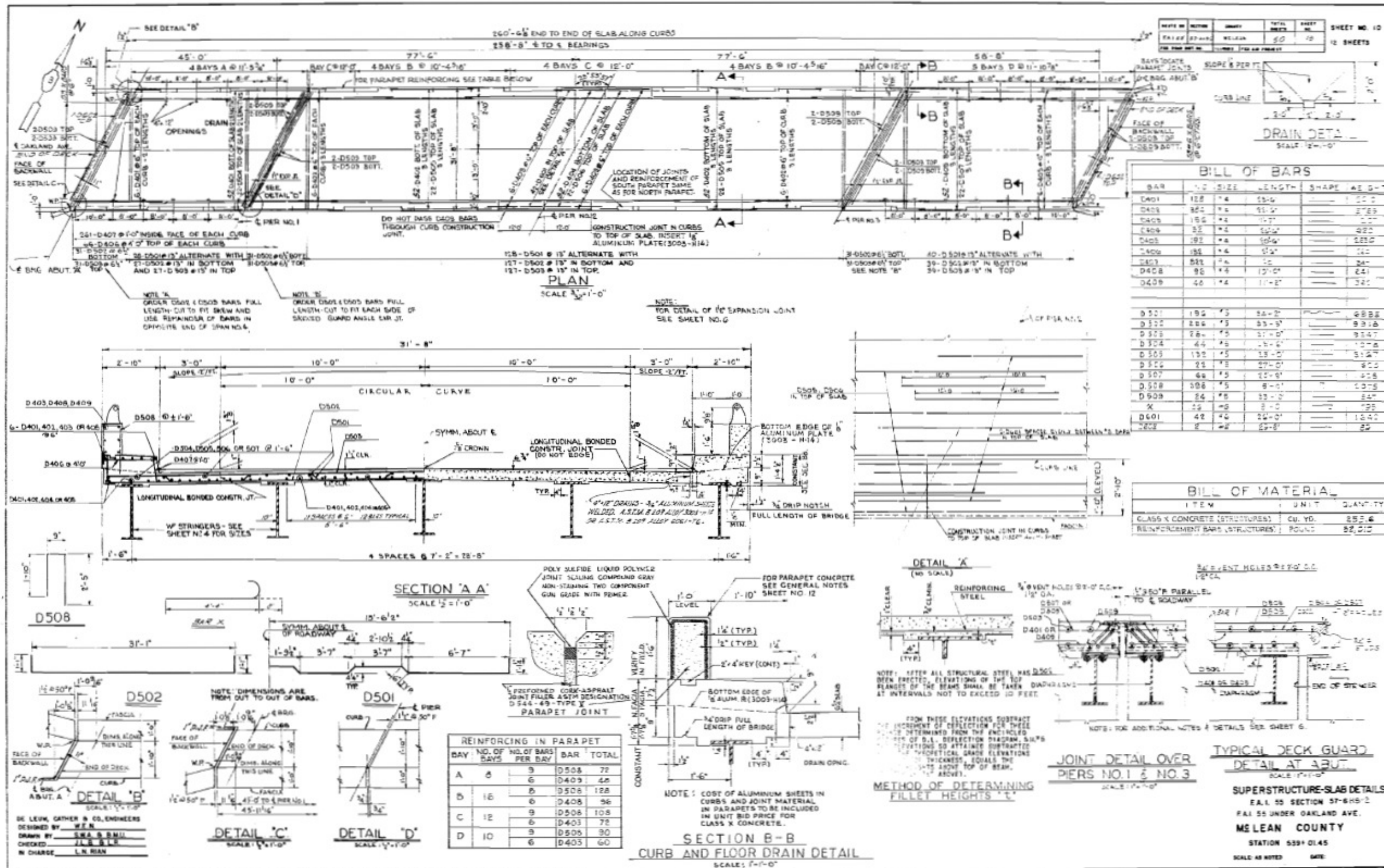
SHEET NO.	SECTION	COUNTY	TOTAL SHEETS	SHEET NO.
55	57-6HB-2(BR)	MCLEAN	31	25

BILL OF MATERIAL		
ITEM	UNIT	TOTAL
CLASS A REINFORCEMENT FOR STRUCTURES	CU YD.	214
CLASS V CONCRETE (STRUCTURES)	CU YD.	1874
REINFORCEMENT BARS (STRUCTURES)	POUNDS	348.0
FURNISHING CROSOATED PILES UP TO 20 FEET	LN. FT.	520
FURNISHING CROSOATED PILES TO 1 TO 20 FEET	LN. FT.	1048
TEST PILES (CROSOATED)	EACH	
DRIVING TIMBER PILES	LN. FT.	1828
NAME PLATES	EACH	2

BILL OF BARS - PERS NO. 1 & 3				
BAR NO.	SIZE	LENGTH	WEIGHT	
P501	1/2"	35'-0"	225	
P502	1/2"	20'-0"	125	
P503	1/2"	20'-0"	125	
P504	1/2"	20'-0"	125	
P505	1/2"	20'-0"	125	
P506	1/2"	20'-0"	125	
P507	1/2"	20'-0"	125	
P508	1/2"	20'-0"	125	
P509	1/2"	20'-0"	125	
P510	1/2"	20'-0"	125	
P511	1/2"	20'-0"	125	
P512	1/2"	20'-0"	125	
P513	1/2"	20'-0"	125	
P514	1/2"	20'-0"	125	
P515	1/2"	20'-0"	125	
P516	1/2"	20'-0"	125	
P517	1/2"	20'-0"	125	
P518	1/2"	20'-0"	125	
P519	1/2"	20'-0"	125	
P520	1/2"	20'-0"	125	

DE LEUM, GATHER & CO. ENGINEERS
 DESIGNED BY: L.B. WEN
 DRAWN BY: R.B.
 CHECKED: WEN & J.L.B.
 IN CHARGE: L.N. RIAN

DETAILS OF PIERS
 F.A.I. 55 SECTION 57-6HB-2
 F.A.I. 55 UNDER OAKLAND AVE
 MCLEAN COUNTY
 STATION 539+01.45
 SCALE AS NOTED DATE:



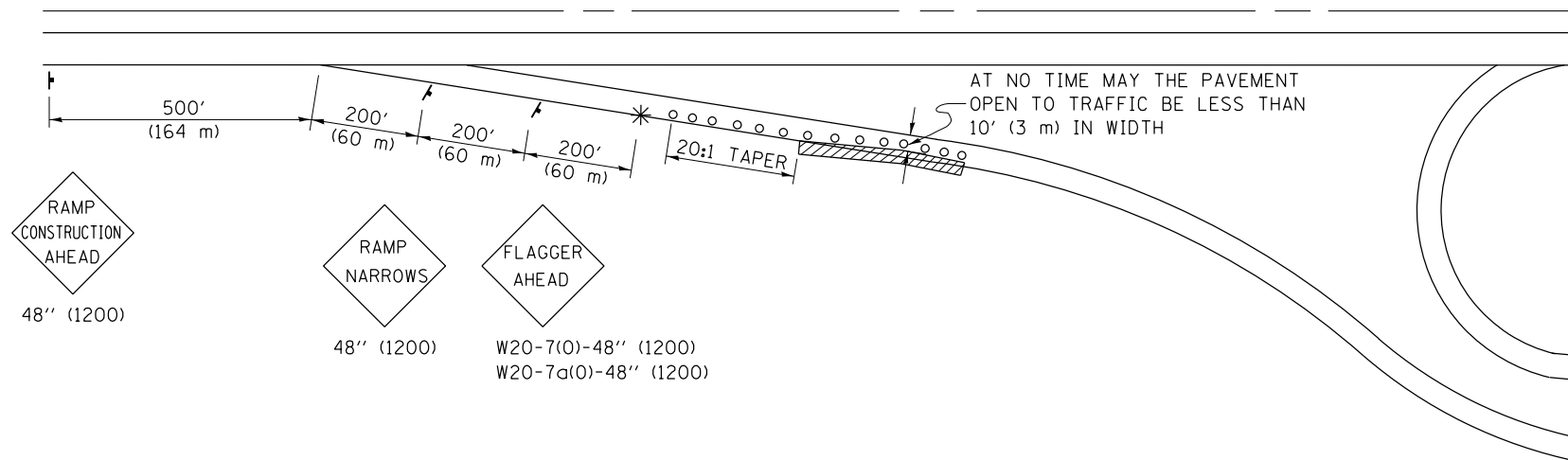
DATE	BY	CHKD	TOTAL SHEETS	SHEET NO.
			50	12

BAR	NO.	SIZE	LENGTH	SHAPE	QTY
D401	128	#4	55'-0"		128
D403	96	#4	55'-0"		96
D405	192	#4	11'-0"		192
D406	96	#4	11'-0"		96
D408	96	#4	11'-0"		96
D409	96	#4	11'-0"		96
D501	192	#5	28'-0"		192
D502	288	#5	28'-0"		288
D503	288	#5	28'-0"		288
D504	44	#5	15'-0"		44
D505	192	#5	15'-0"		192
D506	288	#5	15'-0"		288
D507	44	#5	15'-0"		44
D508	396	#5	8'-0"		396
D908	24	#8	33'-0"		24
X	24	#8	33'-0"		24
D401	48	#4	22'-0"		1540
D402	2	#4	22'-0"		22

ITEM	UNIT	QUANTITY
CLASS X CONCRETE (STRUCTURES)	Cu. YD.	255.6
REINFORCEMENT BARS (STRUCTURES)	POUNDS	52,010

BAY	NO. OF BAYS	NO. OF BARS PER BAY	BAR TOTAL
A	8	9	D508 72
		6	D409 48
B	16	9	D508 144
		6	D403 96
C	12	9	D506 108
		6	D403 72
D	10	9	D505 90
		6	D403 60

**APPLICATION NO. 1
DAY OPERATION ONLY
PARTIAL RAMP CLOSURE**



SYMBOLS

- (APPLICATION NO. 1) TYPE I OR II BARRICADES OR DRUMS @ 50' (15 m) CTS.
- ⦿ (APPLICATION NO. 2) TYPE I OR II BARRICADES OR DRUMS @ 25' (7.5 m) CTS. W/STEADY BURNING LIGHTS
- * (APPLICATION NO. 1) FLAGGER PLACED AS DIRECTED BY THE ENGINEER
- † SIGN ON PORTABLE OR PERMANENT SUPPORT
- ▨ WORK AREA

TYPICAL APPLICATIONS

- PAVEMENT PATCHING
- PIPE UNDERDRAINS
- HMA RESURFACING

GENERAL NOTES

CONSTRUCTION OPERATIONS SHALL BE CONFINED TO AN AREA NARROW ENOUGH THAT A MINIMUM OF 10' (3 m) OF PAVEMENT SHALL BE OPEN TO TRAFFIC AT ALL TIMES.

FULL WIDTH PAVEMENT ON THE RAMPS SHALL BE OPEN TO TRAFFIC AT NIGHT.

WHEN NO WORK IS BEING PERFORMED, THE FLAGGER WILL NOT BE REQUIRED. IF THE FLAGGER IS NOT PRESENT, THE FLAGGER SIGNS SHALL BE REMOVED OR COVERED.

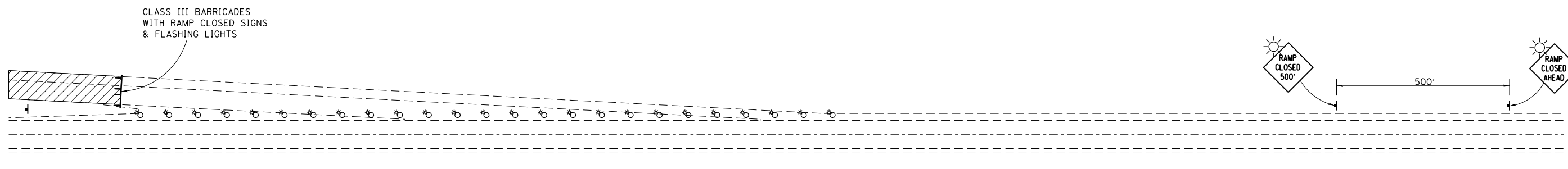
ALL SIGNS SHALL BE POST MOUNTED IF WORK IN THE AREA EXCEEDS FOUR DAYS OF DAYTIME OPERATIONS.

LONGITUDINAL DIMENSIONS MAY BE ADJUSTED SLIGHTLY TO FIT FIELD CONDITIONS.

ALL VEHICLES, EQUIPMENT, WORKERS (EXCEPT FLAGGER) AND THEIR ACTIVITIES ARE RESTRICTED AT ALL TIMES TO ONE SIDE OF THE PAVEMENT UNLESS OTHERWISE AUTHORIZED BY THE DISTRICT ENGINEER.

Traffic Control for all ramps shall be in accordance with the appropriate application of plan detail **TRAFFIC CONTROL FOR RAMPS** and will not be paid for separately, but shall be included in the contract lump sum prices for Traffic Control and Protection, Standard 701401 and Traffic Control and Protection, Standard 701406.

**APPLICATION NO. 2
RAMP CLOSURE**



GENERAL NOTES

STEADY BURN LIGHTS ARE NOT REQUIRED FOR DAYTIME OPERATIONS.

CONTACT THE DISTRICT TRAFFIC OPERATIONS ENGINEER AT 217-465-4181, ONE WEEK PRIOR TO CLOSING THE RAMP.

Note: All dimensions are in INCHES (millimeters) unless otherwise shown.

FILE NAME =	USER NAME = shererjm	DESIGNED -	REVISED - 11/06
p:\11\084EBIDINTEG.illinois.gov\PI\DOT\Documents\DOT Offices\District 5\Projects\0577\DRAWING\Hydraulics\70B57-RepairPlans		CHECKED -	REVISED -
	PLOT SCALE = 40.0000' / in.	DATE -	REVISED -
	PLOT DATE = 11/16/2016		

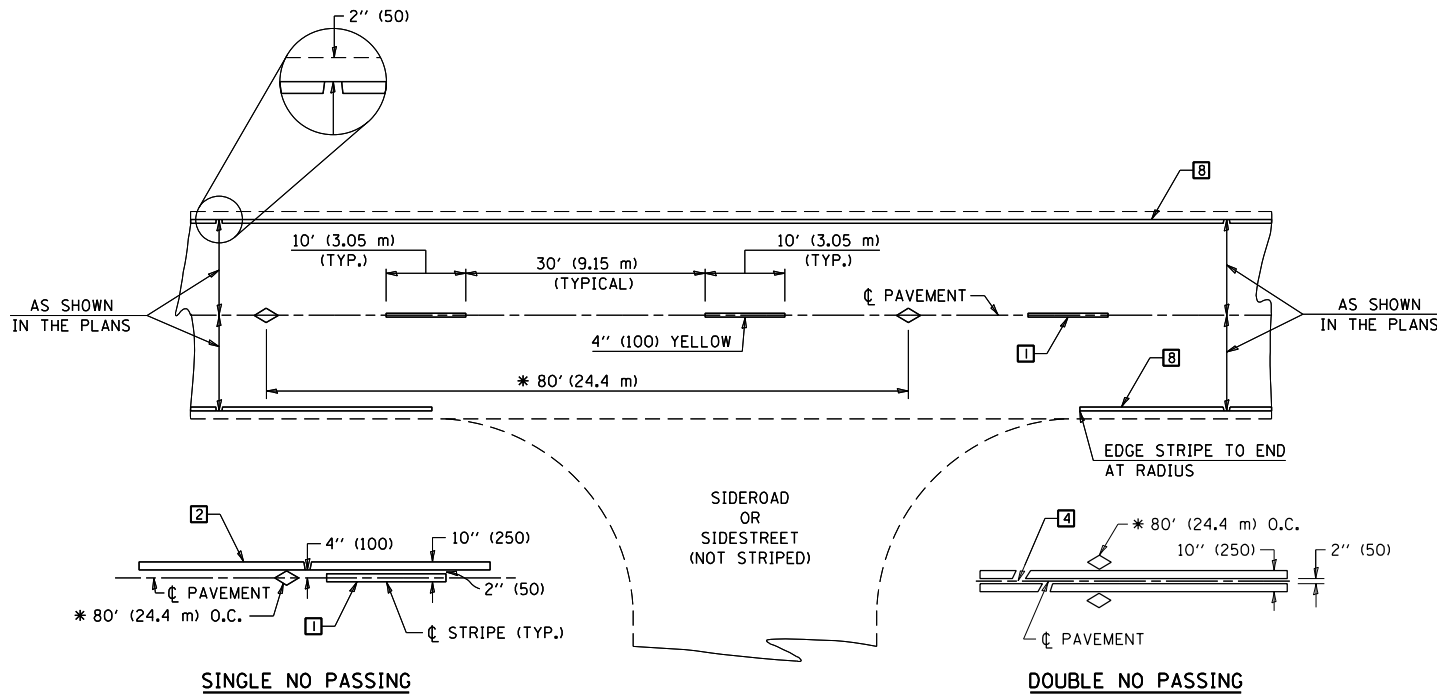
**STATE OF ILLINOIS
DEPARTMENT OF TRANSPORTATION**

TRAFFIC CONTROL FOR RAMPS

SCALE: SHEET NO. OF SHEETS STA. TO STA.

DISTRICT 5 DETAIL NO. 70103710

F.A.I. RTE.	SECTION	COUNTY	TOTAL SHEETS	SHEET NO.
55	57-6HB-2(BR)	MCLEAN	31	27
CONTRACT NO.				
FED. ROAD DIST. NO. ILLINOIS FED. AID PROJECT				



* REDUCE TO 40' (12.2 m) O.C. ON CURVES WITH POSTED OR ADVISORY SPEEDS OF 45 mph (70 km/h) OR LESS.

TWO LANE/TWO WAY

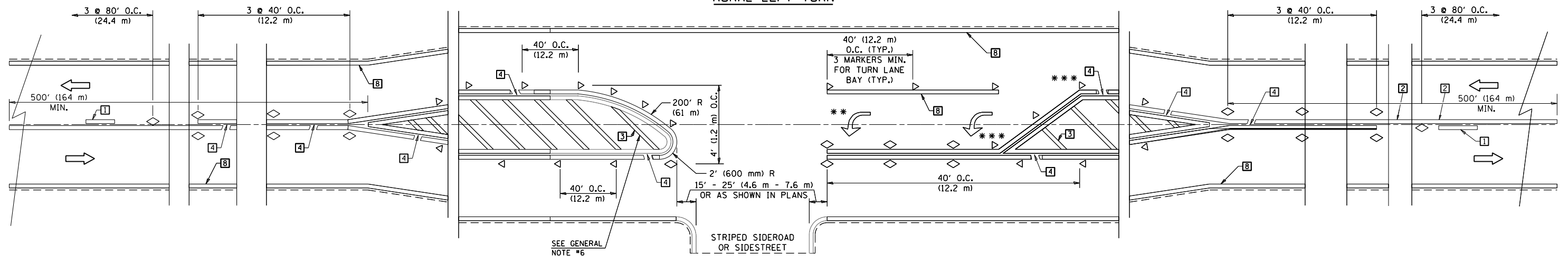
TYPICAL PAVEMENT MARKING LEGEND

- 1 4" (100) SKIP-DASH (YELLOW)
 - 2 4" (100) SOLID (YELLOW)
 - 3 12" (300) DIAGONAL (YELLOW)
 - 4 4" (100) DOUBLE YELLOW (NARROW)
 - 5 RESERVED
 - 6 RESERVED
 - 7 4" (100) SKIP-DASH (WHITE)
 - 8 4" (100) SOLID (WHITE)
 - 9 12" (300) DIAGONAL (WHITE)
 - 10 6" (150) SOLID (WHITE)
 - 11 24" (600) STOP BAR (WHITE)
 - 12 8" (200) SOLID (WHITE)
 - 13 4" (100) LANE LINE EXTENSIONS (WHITE)
 - 14 4" (100) PARKING WHITE
-

TYPICAL PAVEMENT MARKERS LEGEND

- ◇ TWO-WAY AMBER MARKER
- ▷ ONE-WAY AMBER MARKER
- ▷ ONE-WAY CRYSTAL MARKER

RURAL LEFT TURN



*** REDUCE SPACING IF NECESSARY TO ASSURE MARKERS AT CORNER POINTS.

** TURN ARROWS SHALL BE PLACED AS SHOWN ON SHEET #2.

Note: All dimensions are in INCHES (millimeters) unless otherwise shown.

FILE NAME =	USER NAME = shererjm	DESIGNED -	REVISED - 11/06
p:\11\084EBIDINTEG\illinois.gov\PI\DOT\Documents\DOT Offices\District 5\Projects\0572\Drawings\Hydraulics\70B57-RepairPlans		REVISIONS	REVISED - 09/2009 - KJT
	PLOT SCALE = 40.0000' / in.	CHECKED -	REVISED - 04/14 - JLA
	PLOT DATE = 12/5/2016	DATE -	REVISED -

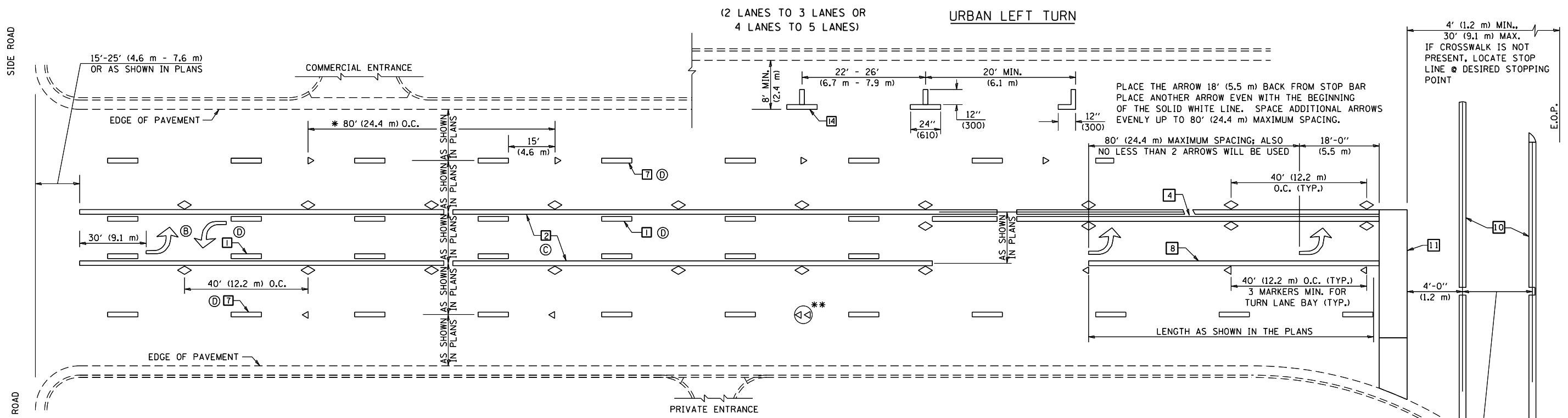
**STATE OF ILLINOIS
DEPARTMENT OF TRANSPORTATION**

**PAVEMENT MARKING AND MARKERS
(RURAL & URBAN APPLICATIONS)**

SCALE: SHEET NO. 1 OF 4 SHEETS STA. TO STA.

DISTRICT 5 DETAIL NO. 7800AAA

F.A.I. RTE.	SECTION	COUNTY	TOTAL SHEETS	SHEET NO.
55	57-6HB-2(BR)	MCLEAN	31	28
CONTRACT NO. 70B57				
FED. ROAD DIST. NO. ILLINOIS FED. AID PROJECT				

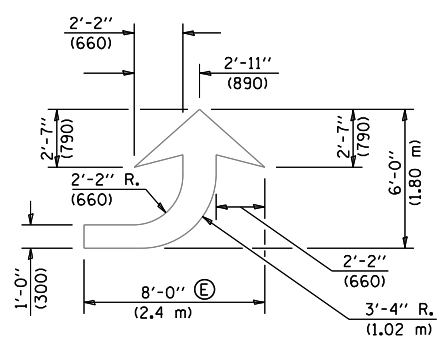


* REDUCE TO 40 FEET (12.2 METERS) ON CENTER ON CURVES WHERE ADVISORY SPEEDS ARE 10 MPH (15 km/h) LOWER THAN POSTED SPEEDS.

** DOUBLE LANE LINE MARKERS SHALL BE SPECIFIED AND SPACED AS SHOWN IN HIGHWAY STANDARD 781001 FOR MULTI-LANE DIVIDED AND UNDIVIDED HIGHWAYS.

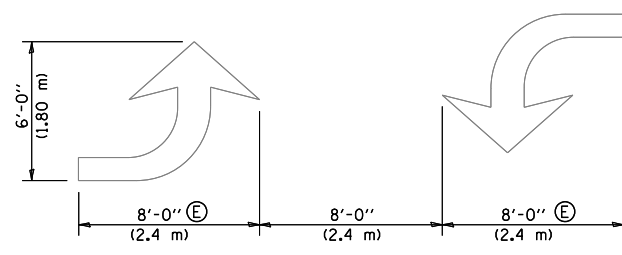
GENERAL NOTES:

- ⓑ TURN ARROW PAIRS SHALL BE PLACED AT 250' (75 m) INTERVALS AND SHALL BE EVENLY SPACED BETWEEN BOTH ENDS OF THE BIDIRECTIONAL LEFT TURN LANE.
- ⓒ THE SOLID YELLOW PAVEMENT MARKINGS ② SHOULD GENERALLY START OR END NEAR THE RADIUS POINT OF EACH STREET RETURN EXCEPT WHERE ONE OR BOTH ENDS WOULD INCLUDE STOP BARS.
- ⓓ THE SKIP-DASH PAVEMENT MARKINGS ① OR ⑦ SHOULD BE CENTERED BETWEEN BOTH ENDS OF EACH CITY BLOCK AND SHALL BE PLACED SO THEY LINE UP ACROSS FROM EACH OTHER. SEE EXAMPLE ON SHEET 2 OF 3.
- ⓔ USE LARGE ARROW SIZE FOR BOTH RURAL AND URBAN LOCATIONS. (SEE LAST PAGE OF SECTION 780x FOR SYMBOLS TABLE)



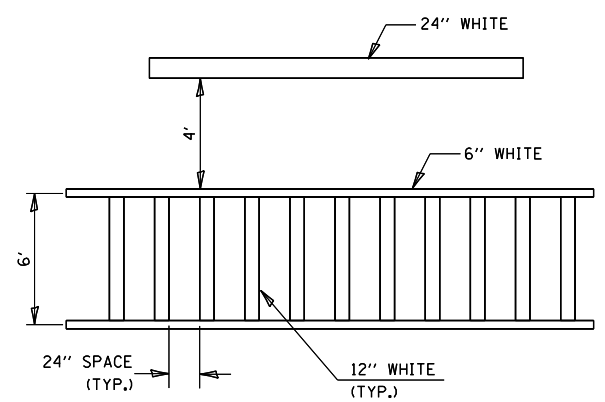
LEFT ARROW

REVERSE FOR RIGHT ARROW
AREA = 15.6 SQ. FT. (1.47 m²)
(WHITE)

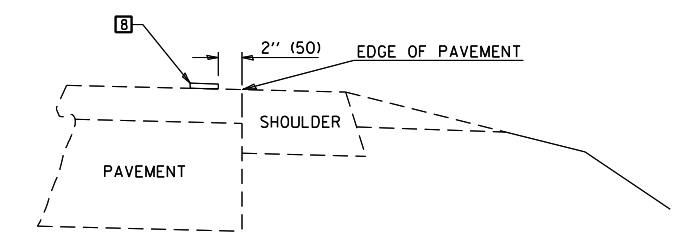


TYPICAL DOUBLE TURN ARROWS (WHITE)

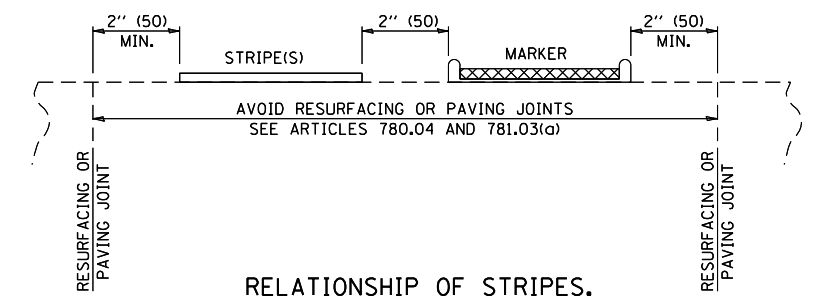
BLOOMINGTON-NORMAL CITY LIMITS ONLY



TYPICAL SPACING FOR CROSSWALKS & STOP BARS



RELATIONSHIP OF EDGE LINE TO EDGE OF PAVEMENT (SAFETY SHOULDER OR PAVED SURFACE) SEE ARTICLE 780.04



RELATIONSHIP OF STRIPES, MARKERS AND JOINTS

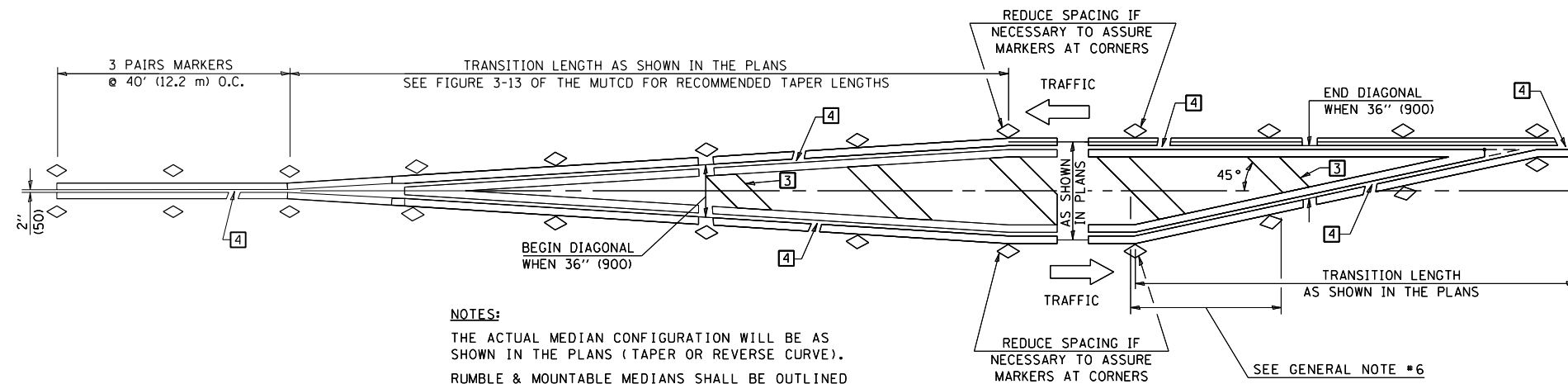
CROSSWALK WIDTH 6'-0" (1.8 m) OR AS SHOWN IN THE PLANS

Note: All dimensions are in INCHES (millimeters) unless otherwise shown.

FILE NAME =	USER NAME = shererjm	DESIGNED -	REVISED - 11/06	STATE OF ILLINOIS DEPARTMENT OF TRANSPORTATION	PAVEMENT MARKING AND MARKERS (RURAL & URBAN APPLICATIONS)	F.A.I. RTE.	SECTION	COUNTY	TOTAL SHEETS	SHEET NO.
pw:\11\084EBIDINTEG.illinois.gov\PIWIDOT\Documents\IDOT Offices\District 5\Projects\0577\DRAWING>Data\Hydraulics\70B57-Repairs\0577-REVISED - 09/2009 - KJT	PLANNED	CHECKED -	REVISED - 04/14 - JLA			55	57-6HB-2(BR)	MCLEAN	31	29
PLOT SCALE = 40.0000' / in.	DATE -	DATE -	DATE -			CONTRACT NO. 70B57				
PLOT DATE = 12/5/2016						FED. ROAD DIST. NO. ILLINOIS FED. AID PROJECT				

DISTRICT 5 DETAIL NO. 7800AAA

SCALE: SHEET NO. 2 OF 4 SHEETS STA. TO STA.

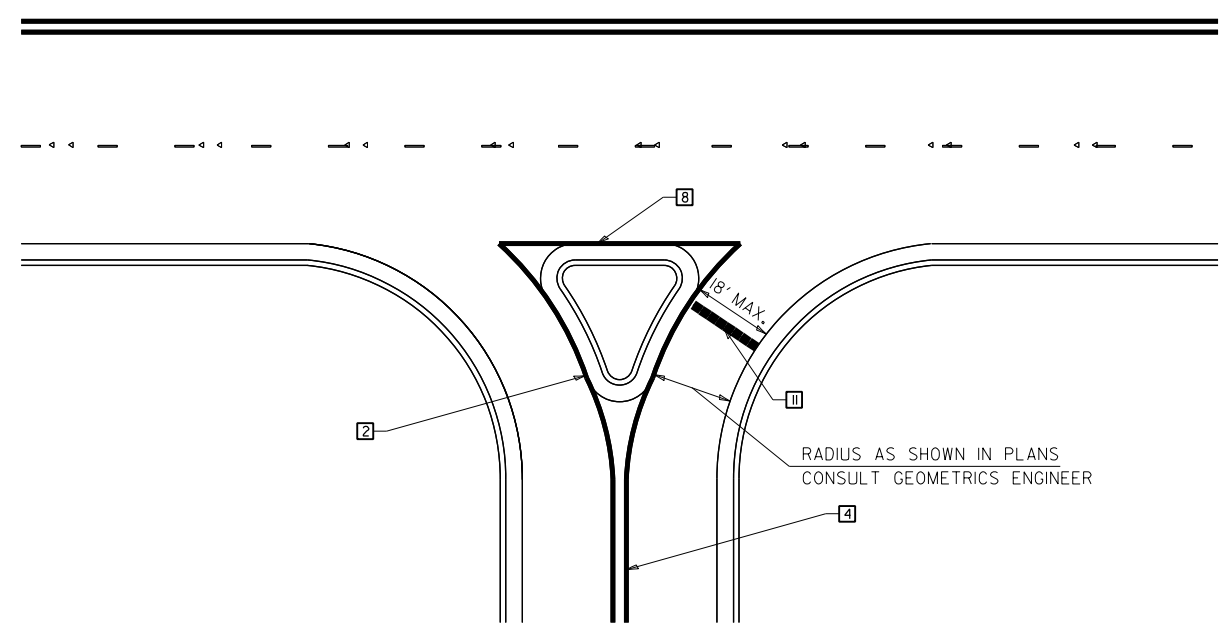


NOTES:
 THE ACTUAL MEDIAN CONFIGURATION WILL BE AS SHOWN IN THE PLANS (TAPER OR REVERSE CURVE).
 RUMBLE & MOUNTABLE MEDIANS SHALL BE OUTLINED WITH [2].

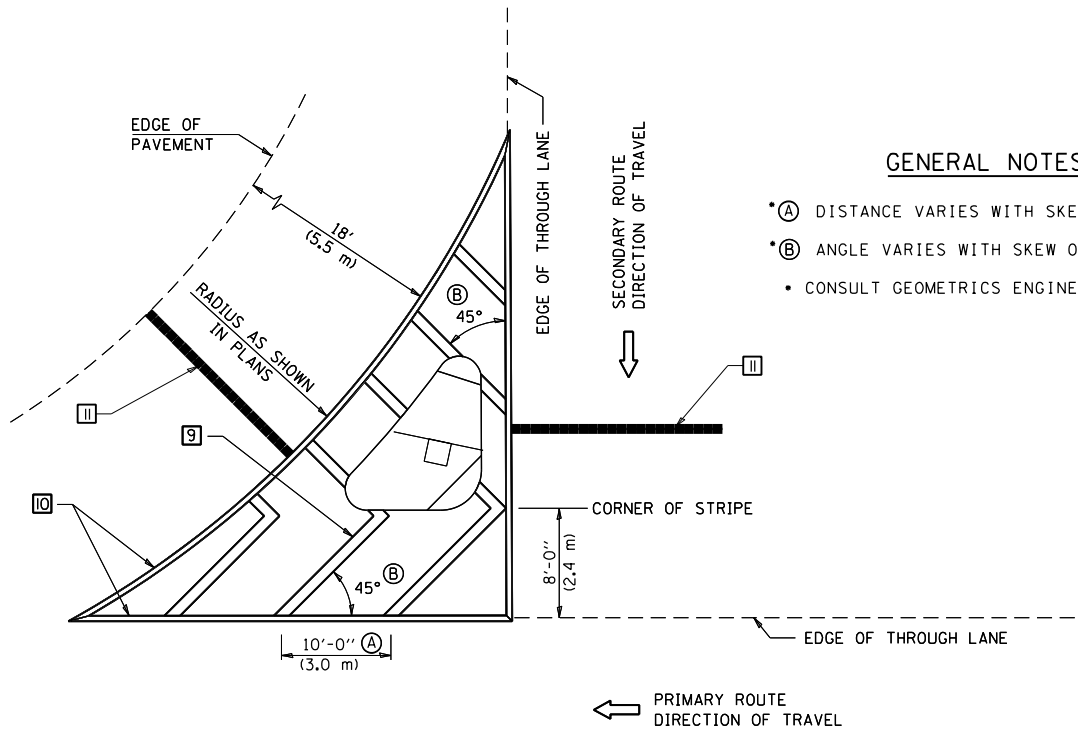
TYPICAL MEDIAN TRANSITIONS

GENERAL NOTES

1. WHEN MEDIANS ARE PRESENT, PAVEMENT MARKINGS ARE TO BE PLACED ADJACENT TO MEDIANS.
2. SOME OF THE INFORMATION INCLUDED WITH THIS DETAIL MAY NOT BE APPLICABLE TO THIS IMPROVEMENT.
3. PAVEMENT MARKINGS ARE TO BE EXTENDED THROUGH OMISSIONS WHEN APPLICABLE.
4. A STRIPING KEY IS AVAILABLE ELSEWHERE AND SHALL BE SHOWN WHERE THE QUANTITIES ARE LISTED.
5. FINAL PAVEMENT MARKINGS SHALL BE IN PLACE PRIOR TO PLACING ANY RAISED REFLECTIVE PAVEMENT MARKERS.
6. THE FOLLOWING CRITERIA SHALL BE USED FOR SELECTING THE DIAGONAL PAVEMENT MARKING SPACING,
 < 30 MPH USE 15' (< 50 km/h USE 4.5 m)
 30-45 MPH USE 20' (50-75 km/h USE 6.0 m)
 > 45 MPH USE 30' (> 75 km/h USE 9.0 m)



RIGHT IN - RIGHT OUT ACCESS



ISLAND

GENERAL NOTES

- (A) DISTANCE VARIES WITH SKEW OF INTERSECTION.
- (B) ANGLE VARIES WITH SKEW OF INTERSECTION.
- CONSULT GEOMETRICS ENGINEER

Note: All dimensions are in INCHES (millimeters) unless otherwise shown.

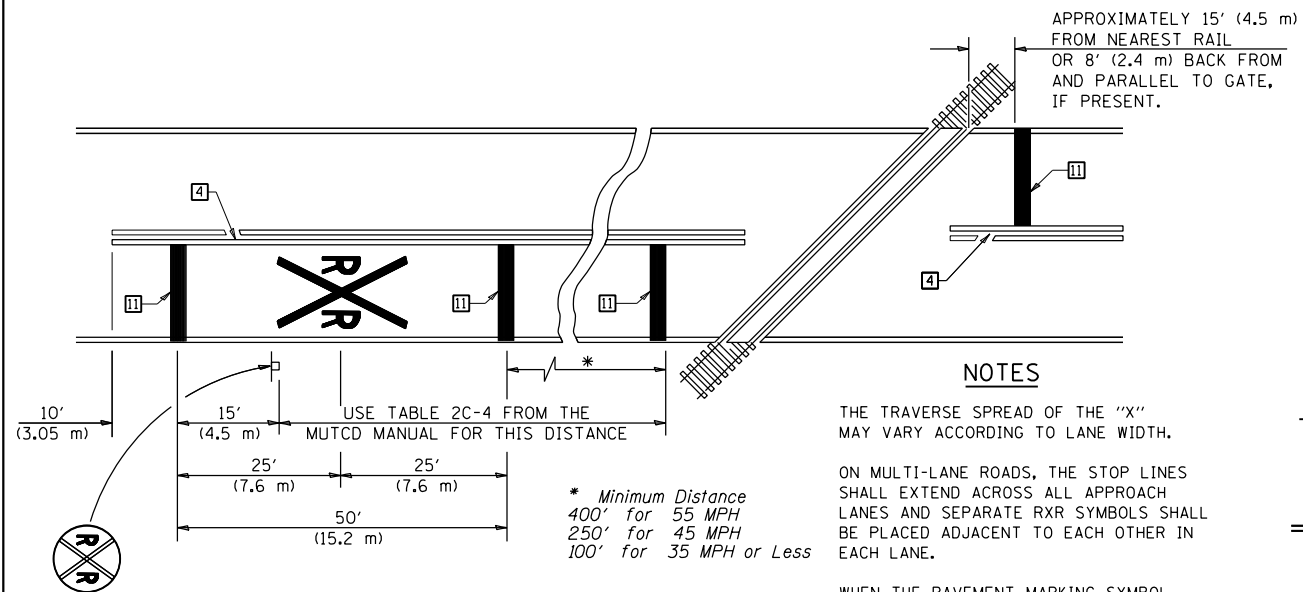
FILE NAME =	USER NAME = shererjm	DESIGNED -	REVISED - 11/06
p:\11\084EBIDINTEG.illinois.gov\PIWIDOT\Documents\IDOT Offices\District 5\Projects\057-DR\057-DR\057-DR\Hydraulics\70B57-RepairPlans\		REVISIONS	REVISED - 09/2009 - KJT
	PLOT SCALE = 40.0000' / in.	CHECKED -	REVISED - 04/14 - JLA
	PLOT DATE = 12/5/2016	DATE -	REVISED -

**STATE OF ILLINOIS
 DEPARTMENT OF TRANSPORTATION**

**PAVEMENT MARKING AND MARKERS
 (RURAL & URBAN APPLICATIONS)**

SCALE: SHEET NO. 3 OF 4 SHEETS STA. TO STA.

DISTRICT 5 DETAIL NO. 7800AAA				
F.A.I. RTE.	SECTION	COUNTY	TOTAL SHEETS	SHEET NO.
55	57-6HB-2(BR)	MCLEAN	31	30
CONTRACT NO. 70B57				
FED. ROAD DIST. NO. ILLINOIS FED. AID PROJECT				



PAVEMENT MARKINGS AT RAILROAD-HIGHWAY GRADE CROSSING

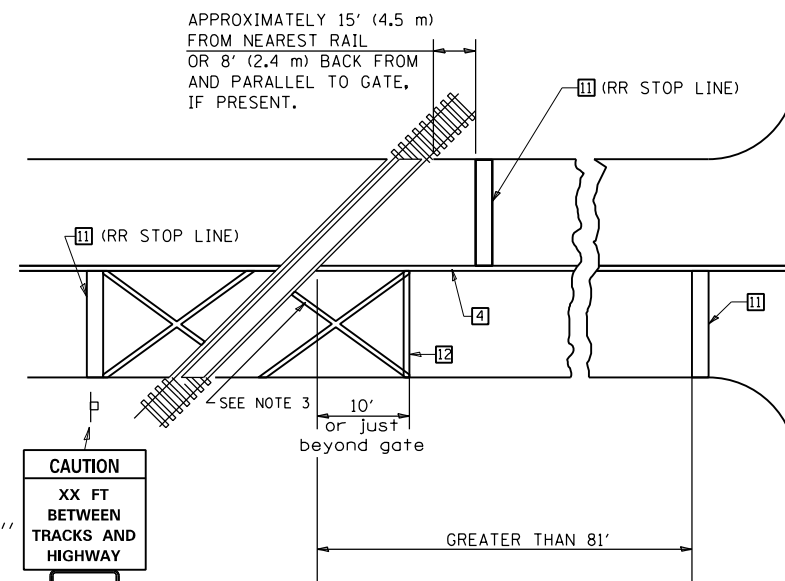
NOTES

THE TRAVERSE SPREAD OF THE "X" MAY VARY ACCORDING TO LANE WIDTH.

ON MULTI-LANE ROADS, THE STOP LINES SHALL EXTEND ACROSS ALL APPROACH LANES AND SEPARATE RXR SYMBOLS SHALL BE PLACED ADJACENT TO EACH OTHER IN EACH LANE.

WHEN THE PAVEMENT MARKING SYMBOL IS USED, A PORTION OF THE SYMBOL SHOULD BE LOCATED DIRECTLY ADJACENT TO THE ADVANCE WARNING SIGN (W10-1) AS PLACED BY TABLE II-1, CONDITION B OF THE MUTCD.

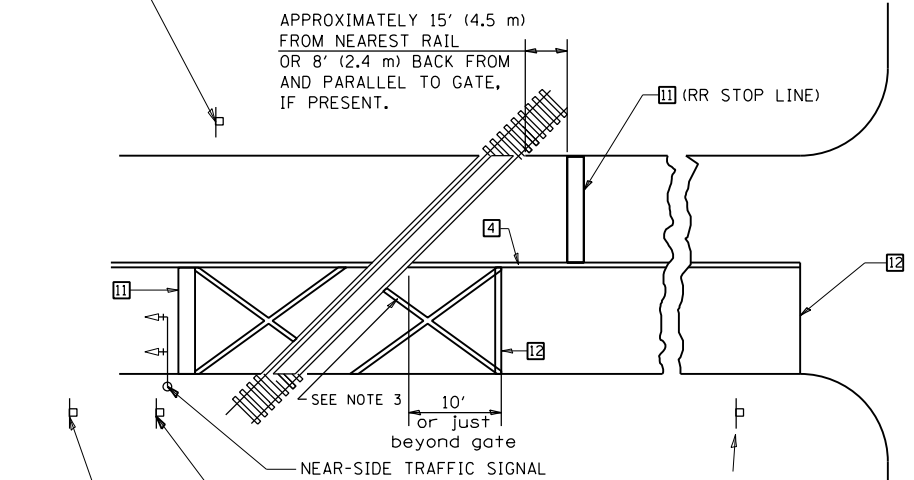
RAILROAD CROSSING WITH INTERCONNECT ONLY



W10-I100
30" X 36"

CAUTION
XX FT BETWEEN TRACKS AND HIGHWAY
DO NOT STOP ON TRACKS
R8-8
24" X 30"

RAILROAD CROSSING WITH INTERCONNECT AND PRE-SIGNALS



DO NOT STOP ON TRACKS (R8-8) 24" X 30"

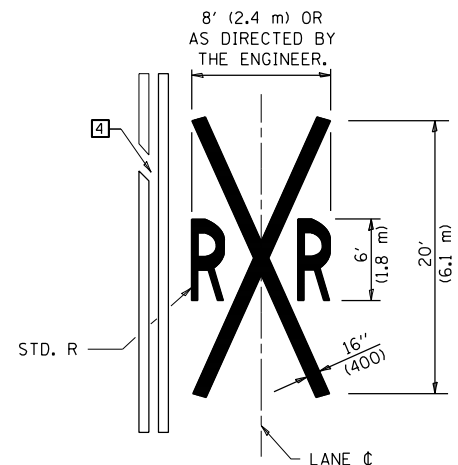
ONLY IF SIGNAL HEAD CANNOT BE LOCATED IN MEDIAN

STOP HERE ON RED (R10-6(L)) 24" X 30" OR STOP HERE ON RED (R10-6(R)) 24" X 30" IF IN MEDIAN

NO TURN ON RED (R10-11) 24" X 30"

DO NOT STOP ON TRACKS (R8-8) 24" X 30"

SUPPLEMENTAL PAVEMENT MARKING TREATMENT FOR RAILROAD-HIGHWAY GRADE CROSSING



ALTERNATE SIGNS

STOP HERE ON RED (R10-6a(L)) 24" X 30"

STOP HERE ON RED (R10-6a(R)) 24" X 30"

GENERAL NOTES

- SUPPLEMENTAL PAVEMENT MARKINGS TO BE INSTALLED ONLY ON APPROACHES TO INTERSECTIONS CONTROLLED BY TRAFFIC SIGNALS WHICH ARE INTERCONNECTED WITH THE RAILROAD WARNING SIGNALS.
- EXTEND PAVEMENT MARKINGS TO THE INTERSECTION ONLY WHERE NEAR-SIDE TRAFFIC SIGNALS ARE USED.
- 6" WHITE PAVEMENT MARKINGS AT 45° TO PAVEMENT, 8' CENTER TO CENTER.
- XX DISTANCE TO BE SHOWN ON SIGN MEASURED FROM A POINT 6 FEET FROM THE RAIL CLOSEST TO THE INTERSECTION OR FROM THE CLOSEST POINT ALONG THE EXIT GATE IF PRESENT OVER THE ROADWAY WHEN IN THE LOWERED POSITION TO THE STOP BAR OR CROSSWALK, WHICH EVER IS CLOSEST, ROUNDED DOWN TO NEAREST 5 FEET. WHERE THERE IS NO STOP LINE, MEASURE TO POINT WHERE DRIVER HAS A VIEW OF APPROACHING TRAFFIC.
- THE CLEARANCE SIGN IS ALSO TO BE USED AS AN INTERIM MEASURE AT LOCATIONS WITH INTERCONNECTED INTERSECTION TRAFFIC SIGNALS WHERE IT IS PLANNED TO CHANGE THEM TO NEAR-SIDE SIGNALS AT A FUTURE TIME. IN THIS CASE, THE DISTANCE TO BE SHOWN ON THE SIGN IS MEASURED FROM THE EDGE OF THE STRIPED-OUT AREA INSTEAD OF 6 FEET FROM THE RAIL. THE SIGN IS TO BE REMOVED WHEN THE NEAR-SIDE SIGNALS ARE INSTALLED AND THE PAVEMENT MARKINGS EXTENDED TO THE INTERSECTION.

Note: All dimensions are in INCHES (millimeters) unless otherwise shown.

FILE NAME =	USER NAME = shererjm	DESIGNED -	REVISED - 11/06
p:\11\084EBIDINTEG\11\inois.gov\PIWIDOT\Documents\DOT Offices\District 5\Projects\057\DR\ANNOData\Hydraulics\70B57-RepairPlans		CHECKED -	REVISED - 09/2009 - KJT
		DATE -	REVISED - 04/14 - JLA
			REVISED -

**STATE OF ILLINOIS
DEPARTMENT OF TRANSPORTATION**

**PAVEMENT MARKING AND MARKERS
(RURAL & URBAN APPLICATIONS)**

SCALE: SHEET NO. 4 OF 4 SHEETS STA. TO STA.

DISTRICT 5 DETAIL NO. 7800AAAA

F.A.I. RTE.	SECTION	COUNTY	TOTAL SHEETS	SHEET NO.
55	57-6HB-2(BR)	MCLEAN	31	31
CONTRACT NO. 70B57				
FED. ROAD DIST. NO. ILLINOIS FED. AID PROJECT				