

STATE OF ILLINOIS  
DEPARTMENT OF TRANSPORTATION  
DIVISION OF HIGHWAYS

**PROPOSED  
IMPROVEMENTS**

VARIOUS ROUTES  
SECTION D6 LIGHTING 2017

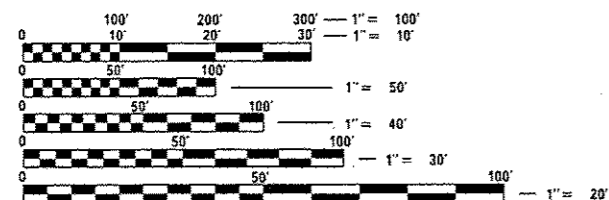
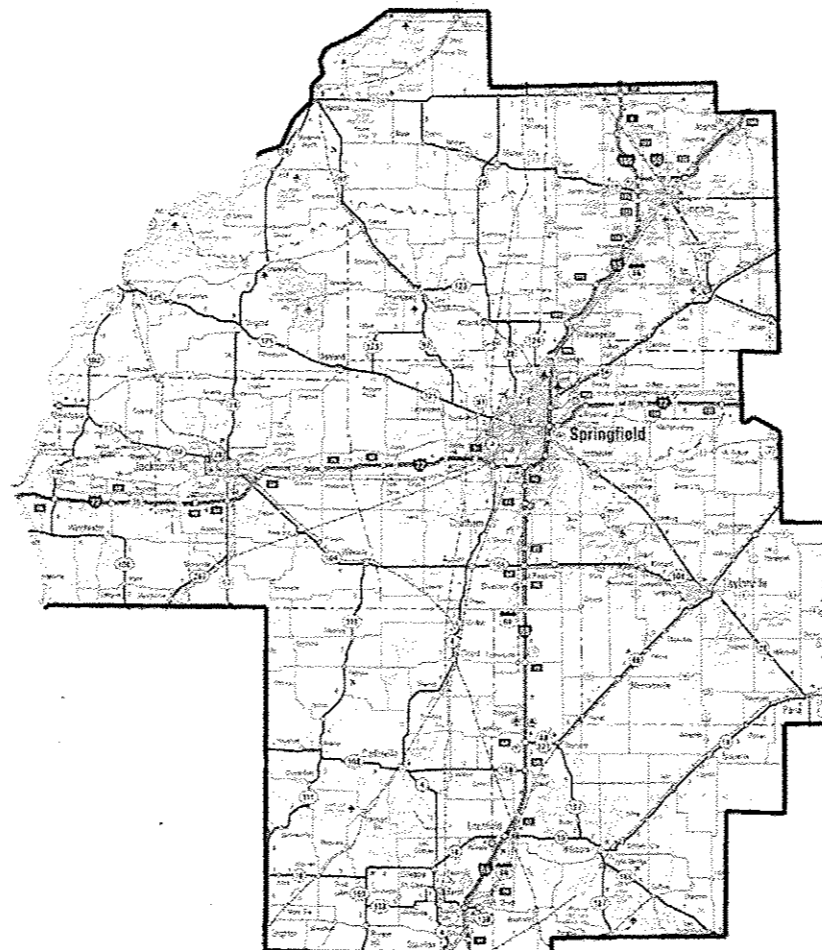
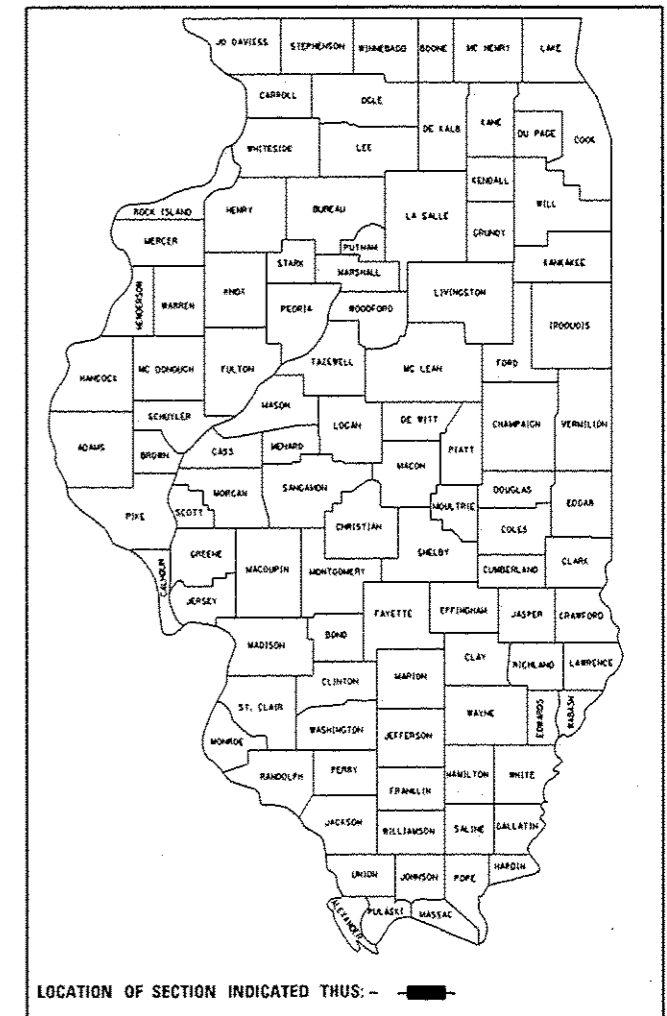
VARIOUS COUNTIES

C-96-019-17

FOR INDEX OF SHEETS, SEE SHEET NO. 2

RTE.	SECTION	COUNTY	TOTAL SHEETS	SHEET NO.
VAR.	D6 LIGHTING 2017	VARIOUS	3	1
		ILLINOIS	CONTRACT NO. 72J57	

D-96-019-17



FULL SIZE PLANS HAVE BEEN PREPARED USING STANDARD ENGINEERING SCALES. REDUCED SIZED PLANS WILL NOT CONFORM TO STANDARD SCALES. IN MAKING MEASUREMENTS ON REDUCED PLANS, THE ABOVE SCALES MAY BE USED.

J.U.L.I.E.  
JOINT UTILITY LOCATION INFORMATION FOR EXCAVATION  
1-800-892-0123  
OR 811

PROJECT ENGINEER  
PROJECT MANAGER

CONTRACT NO. 72J57

LOCATION MAP

STATE OF ILLINOIS  
DEPARTMENT OF TRANSPORTATION  
DIVISION OF HIGHWAYS

SUBMITTED 13 Dec 2016 2016

[Signature]  
DEPUTY DIRECTOR OF HIGHWAYS, REGION ENGINEER

Jan 27 2017

Maurice M. Addis, P.E.  
ENGINEER OF DESIGN AND ENVIRONMENT

[Signature] 2  
DIRECTOR OF HIGHWAYS, CHIEF ENGINEER

PRINTED BY THE AUTHORITY  
OF THE STATE OF ILLINOIS

INDEX OF SHEETS

1. COVER
2. INDEX OF SHEETS AND HIGHWAY STANDARDS
3. SUMMARY OF QUANTITIES AND GENERAL NOTES

HIGHWAY STANDARDS

- 701001-02 OFF-RD OPERATIONS, 2L, 2W, MORE THAN 15' AWAY FROM EDGE OF PAVEMENT
- 701006-05 OFF-RD OPERATIONS, 2L, 2W, 15' TO 24" FROM PAVEMENT EDGE
- 701011-04 OFF-RD MOVING OPERATION, 2L, 2W, DAY ONLY
- 701101-05 OFF-RD OPERATIONS, MULTILANE, 15' TO 24" FROM PAVEMENT EDGE
- 701106-02 OFF RD OPERATIONS, MULTILANE, MORE THAN 15' AWAY
- 701201-04 LANE CLOSURE, 2L, 2W, DAY ONLY, FOR SPEEDS ≥ 45 MPH
- 701206-03 LANE CLOSURE, 2L, 2W, NIGHT ONLY, FOR SPEEDS ≥ 45 MPH
- 701301-04 LANE CLOSURE, 2L, 2W, SHORT TIME OPERATIONS
- 701306-03 LANE CLOSURE, 2L, 2W, SLOW MOVING OPERATIONS DAY ONLY, FOR SPEED ≥ 45 MPH
- 701311-03 LANE CLOSURE, 2L, 2W, MOVING OPERATIONS - DAY ONLY
- 701401-10 LANE CLOSURE, FREEWAY/EXPRESSWAY
- 701406-11 LANE CLOSURE, FREEWAY/EXPRESSWAY, DAY OPERATIONS ONLY
- 701411-09 LANE CLOSURE, MULTILANE, AT ENTRANCE OR EXIT RAMP, FOR SPEEDS ≥ 45 MPH
- 701421-08 LANE CLOSURE, MULTILANE, DAY OPERATIONS ONLY, OR SPEEDS ≥ 45 MPH TO 55 MPH
- 701422-09 LANE CLOSURE, MULTILANE, FOR SPEEDS ≥ 45 MPH TO 55 MPH
- 701428-01 TRAFFIC CONTROL SETUP AND REMOVAL, FREEWAY/EXPRESSWAY
- 701446-08 TWO LANE CLOSURE FREEWAY/EXPRESSWAY
- 701451-04 RAMP CLOSURE FREEWAY/EXPRESSWAY
- 701456-04 PARTIAL EXIT RAMP CLOSURE FREEWAY/EXPRESSWAY
- 701501-06 URBAN LANE CLOSURE, 2L, 2W, UNDIVIDED
- 701502-07 URBAN LANE CLOSURE, 2L, 2W, WITH BIDIRECTIONAL LEFT TURN LANE
- 701601-09 URBAN LANE CLOSURE, MULTILANE, 1W OR 2W WITH NONTRAVERSABLE MEDIAN
- 701602-08 URBAN LANE CLOSURE, MULTILANE, 2W WITH BIDIRECTIONAL LEFT TURN LANE
- 701606-10 URBAN LANE CLOSURE, MULTILANE, 2W WITH MOUNTABLE MEDIAN
- 701701-10 URBAN LANE CLOSURE, MULTILANE INTERSECTION
- 701901-06 TRAFFIC CONTROL DEVICES
- 000001-06 STANDARD SYMBOLS, ABBREVIATIONS AND PATTERNS

FILE NAME * S:\CONTRACTS\0672J57 - LIGHTING 2017	USER NAME * sharpjd	DESIGNED -	REVISED -	<b>STATE OF ILLINOIS DEPARTMENT OF TRANSPORTATION</b>	<b>INDEX OF SHEETS AND HIGHWAY STANDARDS</b>			RT.	SECTION	COUNTY	TOTAL SHEETS	SHEET NO.
	EAST\PLANS\0672J57-ehz2-gennote.dgn	DRAWN -	REVISED -					VAR.	06 LIGHTING 2017	VARIOUS	3	2
Default	PLT SCALE * 59.0000' / 1"	CHECKED -	REVISED -		SCALE:	SHEET	OF	SHEETS	STA.	TO STA.	ILLINOIS FED. AID PROJECT	
	PLT DATE * 12/13/2016	DATE -	REVISED -		CONTRACT NO. 72J57							

0021

0021

0021

CODE NO.	ITEM	UNIT	TOTAL QUANTITY
X8250230	PHOTOCELL	EACH	10
X1400035	150W HPS LAMP/NON CYCLING	EACH	10
X1400036	250W HPS LAMP/NON CYCLING	EACH	190
X1400037	400W HPS LAMP/NON CYCLING	EACH	75
X1400039	150W-240V HPS TRANSFORMER KIT	EACH	2
X1400040	250W-240V HPS TRANSFORMER KIT (GE)	EACH	3
X1400041	250W-480V HPS TRANSFORMER KIT (GE)	EACH	2
X1400042	250W-480V HPS TRANSFORMER KIT (HOLOPHANE)	EACH	10
X1400052	250W-240V HPS TRANSFORMER KIT (HOLOPHONE)	EACH	3
X1400054	150W-480V HPS TRANSFORMER KIT	EACH	6
X1400055	400W-240V HPS TRANSFORMER KIT	EACH	2
X1400056	400W-480V HPS TRANSFORMER KIT	EACH	6
X1400043	12" SIGNAL HEAD WITHOUT VISOR (POLYCARBONATE)	EACH	3
X1400044	12" SIGNAL HEAD VISOR (POLYCARBONATE)	EACH	6
X1400045	ELASTIMOLD FUSE HOLDER	EACH	25
X1400046	RED MARKING PAINT	EACH	60
X1400047	SOLID STATE NEMA FLASHER	EACH	4
X1400048	SOLID STATE NEMA LOAD SWITCH	EACH	20
X1400049	12" LED MODULE (GREEN)	EACH	2
X1400050	12" LED MODULE (YELLOW)	EACH	2
X1400051	12" LED MODULE (RED)	EACH	2
X1400057	FNM 10 BUSS FUSE	EACH	130
X1400058	10 AMP CONTROL FUSE	EACH	35
X1400059	250W-480V HPS LUMINAIRE (GE)	EACH	2
X1400060	250W-240V HPS LUMINAIRE (GE)	EACH	2
X1400061	400W-480V HPS LUMINAIRE (GE)	EACH	2
X1400062	400W-240V HPS LUMINAIRE (GE)	EACH	2
X1400063	*6 USE WIRE	FOOT	1,700
X1400064	*10 USE WIRE	FOOT	8,000
X1400065	1 INCH UNIDUCT	FOOT	200
X1400066	SURRESTOR	EACH	35
X1400067	SET (4) BREAKAWAY COUPLERS (TRANSP0 4100)	EACH	10
X1400068	45' WEATHERING STEEL LIGHT POLE (VALMONT)	EACH	1
X1400069	53' WEATHERING STEEL LIGHT POLE (VALMONT)	EACH	1
X1400070	45' ALUMINUM LIGHT POLE WITH 15' DAVIT ARM	EACH	1
X1400070	50' ALUMINUM LIGHT POLE WITH 15' DAVIT ARM	EACH	1
X1400071	50' ALUMINUM LIGHT POLE WITH 15' DUAL DAVIT ARM	EACH	1

CODE NO.	ITEM	UNIT	TOTAL QUANTITY
X1400072	ASC/2M-1000 MASTER CONTROLLER	EACH	1
X1400073	ECONDLITE 56K SIGNAL MODEM	EACH	1
X1400074	BUS INTERFACE UNIT	EACH	4
X1400075	ASC 3-2100 SIGNAL CONTROLLER	EACH	1
X1400076	COBALT CONTROLLER	EACH	1
X1400077	AUTOSCOPE ENCORE VIDEO CAMERA	EACH	1
X1400078	AUTOSCOPE TERRA INTERFACE PANEL	EACH	1
X1400079	AUTOSCOPE TERRA ACCESS POINT	EACH	1
X1400080	AUTOSCOPE (1) CAMERA RACKVISION (COMPLETE)	EACH	1

CODE NO.	ITEM	UNIT	TOTAL QUANTITY
XP000001	JOURNEYMAN ELECTRICIAN	HOUR	940
XP000003	JOURNEYMAN ELECTRICIAN (WEEKLY OVERTIME RATE)	HOUR	8
XP000004	JOURNEYMAN ELECTRICIAN (SATURDAY OVERTIME RATE)	HOUR	8
XP000005	JOURNEYMAN ELECTRICIAN (SUNDAY AND HOLIDAY OVERTIME RATE)	HOUR	8
XP000009	PICK-UP TRUCK	HOUR	428
XP000011	BUCKET TRUCK 35-65	HOUR	254
XP000010	BUCKET TRUCK <35	HOUR	140

**GENERAL NOTES**

This work is located on various routes in Mason, Menard, Cass, Morgan, Scott, Logan, Sangamon, Christian, Montgomery and Macoupin counties all located within Region 4, District 6. The work included in this section consists of maintaining and repairing the electrical systems and all other work necessary to complete this section.

The locations of the repair areas shall be determined by the engineer.

All work is to be replaced in kind or, as indicated on the contract plans or provisions.

Removal of damaged materials will include dismantling, loading, hauling, and disposal.

Any necessary traffic control will be provided by the contractor; appropriate standards are listed on Sheet No. 2. Traffic control shall not be paid for as separate pay items, but shall be considered a part of the contract.

The work site shall be left in a safe and orderly condition.

No material should be left on or near the roadway during non-working hours.

All excavated material, which includes digging or grading of any soil or fill material, with the exception of aggregate fills, must be left on, or incorporated within, the IDOT right-of-way due to environmental documentation requirements.

Any work order may be cancelled at the engineer's discretion.

English units of measurement shall govern over and supersede any metric units in this contract. Where included, metric units are for information only.

Electronic files and/or electronic survey information including CADD files will not be available for this project to the contractor.

No overnight lane closures will be allowed, unless emergency conditions exist.

Any reference to a standard in these plans shall be interpreted to mean the edition as indicated by the subnumber shown in the list of standards or the copy included in these plans.