

STATE OF ILLINOIS  
DEPARTMENT OF TRANSPORTATION  
DIVISION OF HIGHWAYS

**PROPOSED  
IMPROVEMENTS**

VARIOUS ROUTES  
SECTION D6 LIGHTING 2017-1

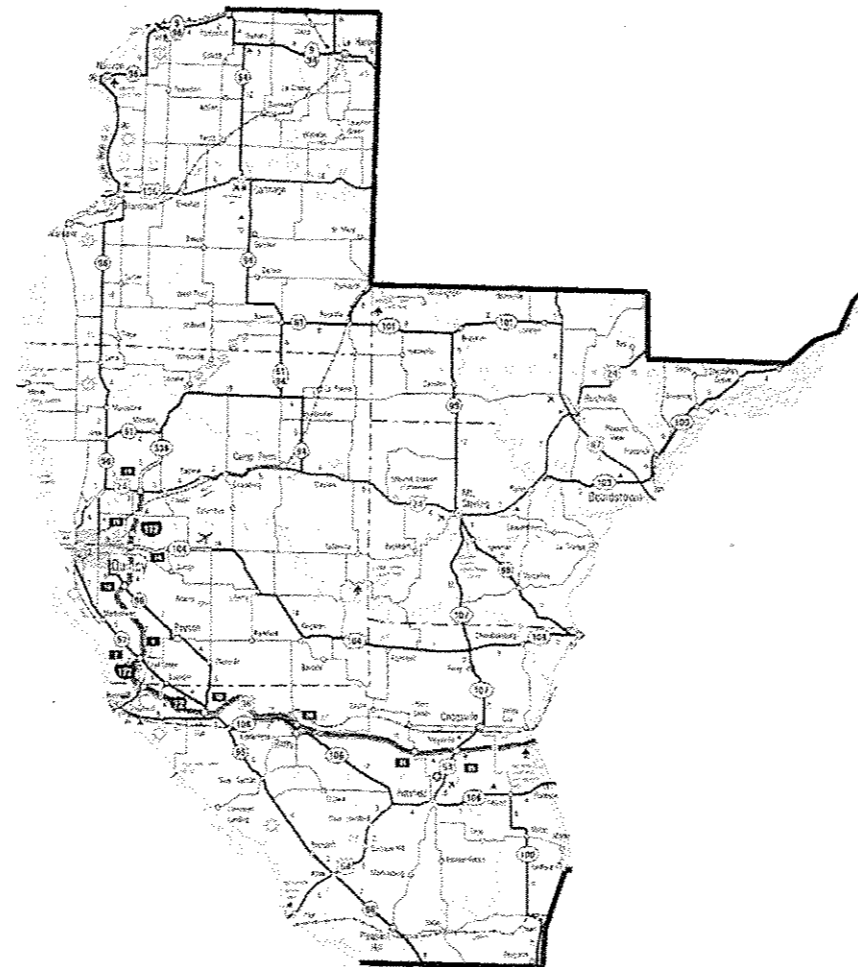
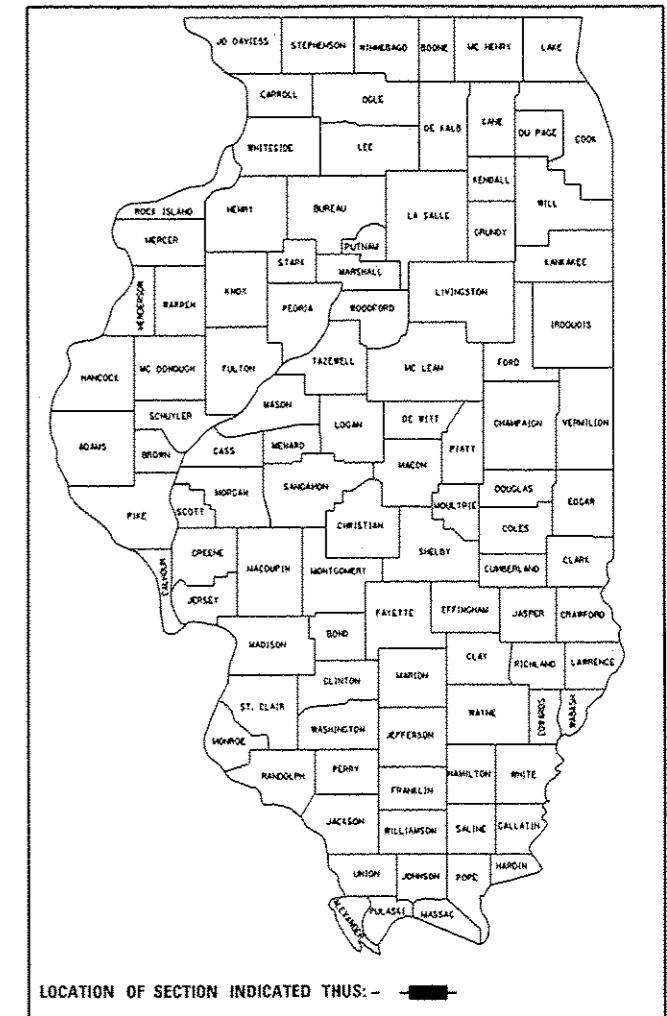
VARIOUS COUNTIES

C-96-020-17

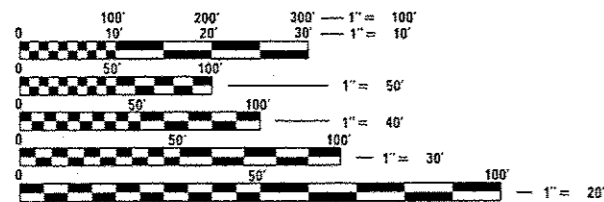
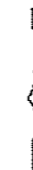
FOR INDEX OF SHEETS, SEE SHEET NO. 2

RTE.	SECTION	COUNTY	TOTAL SHEETS	SHEET NO.
VAR.	D6 LIGHTING 2017-1	VARIOUS	3	1
		ILLINOIS	CONTRACT NO. 72J58	

D-96-020-17



LOCATION MAP



FULL SIZE PLANS HAVE BEEN PREPARED USING STANDARD ENGINEERING SCALES. REDUCED SIZED PLANS WILL NOT CONFORM TO STANDARD SCALES. IN MAKING MEASUREMENTS ON REDUCED PLANS, THE ABOVE SCALES MAY BE USED.

J.U.L.I.E.  
JOINT UTILITY LOCATION INFORMATION FOR EXCAVATION  
1-800-892-0123  
OR 811

PROJECT ENGINEER  
PROJECT MANAGER

CONTRACT NO. 72J58

STATE OF ILLINOIS  
DEPARTMENT OF TRANSPORTATION  
DIVISION OF HIGHWAYS

SUBMITTED 13 December 2016  
*[Signature]*  
DEPUTY DIRECTOR OF HIGHWAYS, REGION ENGINEER

Jan 27 2017  
*[Signature]*  
ENGINEER OF DESIGN AND ENVIRONMENT

Jan 27 2017  
*[Signature]*  
DIRECTOR OF HIGHWAYS, CHIEF ENGINEER

PRINTED BY THE AUTHORITY  
OF THE STATE OF ILLINOIS

INDEX OF SHEETS

1. COVER
2. INDEX OF SHEETS AND HIGHWAY STANDARDS
3. SUMMARY OF QUANTITIES AND GENERAL NOTES

701001-02 OFF-RD OPERATIONS, 2L, 2W, MORE THAN 15' AWAY FROM EDGE OF PAVEMENT  
 701006-05 OFF-RD OPERATIONS, 2L, 2W, 15' TO 24" FROM PAVEMENT EDGE  
 701011-04 OFF-RD MOVING OPERATION, 2L, 2W, DAY ONLY  
 701101-05 OFF-RD OPERATIONS, MULTILANE, 15' TO 24" FROM PAVEMENT EDGE  
 701106-02 OFF RD OPERATIONS, MULTILANE, MORE THAN 15' AWAY  
 701201-04 LANE CLOSURE, 2L, 2W, DAY ONLY, FOR SPEEDS ≥ 45 MPH  
 701206-03 LANE CLOSURE, 2L, 2W, NIGHT ONLY, FOR SPEEDS ≥ 45 MPH  
 701301-04 LANE CLOSURE, 2L, 2W, SHORT TIME OPERATIONS  
 701306-03 LANE CLOSURE, 2L, 2W, SLOW MOVING OPERATIONS DAY ONLY, FOR SPEED ≥ 45 MPH  
 701311-03 LANE CLOSURE, 2L, 2W, MOVING OPERATIONS - DAY ONLY  
 701401-10 LANE CLOSURE, FREEWAY/EXPRESSWAY  
 701406-11 LANE CLOSURE, FREEWAY/EXPRESSWAY, DAY OPERATIONS ONLY  
 701411-09 LANE CLOSURE, MULTILANE, AT ENTRANCE OR EXIT RAMP, FOR SPEEDS ≥ 45 MPH  
 701421-08 LANE CLOSURE, MULTILANE, DAY OPERATIONS ONLY, OR SPEEDS ≥ 45 MPH TO 55 MPH  
 701422-09 LANE CLOSURE, MULTILANE, FOR SPEEDS ≥ 45 MPH TO 55 MPH  
 701428-01 TRAFFIC CONTROL SETUP AND REMOVAL, FREEWAY/EXPRESSWAY  
 701446-08 TWO LANE CLOSURE FREEWAY/EXPRESSWAY  
 701451-04 RAMP CLOSURE FREEWAY/EXPRESSWAY  
 701456-04 PARTIAL EXIT RAMP CLOSURE FREEWAY/EXPRESSWAY  
 701501-06 URBAN LANE CLOSURE, 2L, 2W, UNDIVIDED  
 701502-07 URBAN LANE CLOSURE, 2L, 2W, WITH BIDIRECTIONAL LEFT TURN LANE  
 701601-09 URBAN LANE CLOSURE, MULTILANE, 1W OR 2W WITH NONTRAVERSABLE MEDIAN  
 701602-08 URBAN LANE CLOSURE, MULTILANE, 2W WITH BIDIRECTIONAL LEFT TURN LANE  
 701606-10 URBAN LANE CLOSURE, MULTILANE, 2W WITH MOUNTABLE MEDIAN  
 701701-10 URBAN LANE CLOSURE, MULTILANE INTERSECTION  
 701901-06 TRAFFIC CONTROL DEVICES  
 000001-06 STANDARD SYMBOLS, ABBREVIATIONS AND PATTERNS

FILE NAME * S:\CONTRMAINT_CAD\72J58 - LIGHTING 2017	USER NAME * shorptd	DESIGNED -	REVISED -	<b>STATE OF ILLINOIS DEPARTMENT OF TRANSPORTATION</b>	<b>INDEX OF SHEETS AND HIGHWAY STANDARDS</b>			RTE.	SECTION	COUNTY	TOTAL SHEETS	SHEET NO.
	WEST\plane\0672J58-sh12-gennote.dgn	DRAWN -	REVISED -					VAR.	06 LIGHTING 2017-1	VARIOUS	3	2
Default	PLOT SCALE * 59.0000 / in.	CHECKED -	REVISED -		SCALE: SHEET OF SHEETS STA. TO STA.			CONTRACT NO. 72J58		ILLINOIS FED. AID PROJECT		
	PLOT DATE * 12/13/2016	DATE -	REVISED -									

0021

0021

CODE NO.	ITEM	UNIT	TOTAL QUANTITY
82102150	LUMINAIRE, SODIUM VAPOR, HORIZONTAL MOUNT, 150 WATT	EACH	4
82102250	LUMINAIRE, SODIUM VAPOR, HORIZONTAL MOUNT, 250 WATT	EACH	2
82103600	LUMINAIRE, SODIUM VAPOR, VERTICAL MOUNT, 250 WATT	EACH	3
X8250230	PHOTOCELL	EACH	4
X1400035	150W HPS LAMP/NON CYCLING	EACH	10
X1400036	250W HPS LAMP/NON CYCLING	EACH	40
X1400037	400W HPS LAMP/NON CYCLING	EACH	10
X1400038	250W-240V HPS BALLAST	EACH	4
X1400039	150W-240V HPS TRANSFORMER KIT	EACH	2
X1400040	250W-240V HPS TRANSFORMER KIT (GE)	EACH	3
X1400041	250W-480V HPS TRANSFORMER KIT (GE)	EACH	2
X1400042	250W-480V HPS TRANSFORMER KIT (HALOPHANE)	EACH	2
X1400043	12" SIGNAL HEAD WITHOUT VISOR (POLYCARBONATE)	EACH	6
X1400044	12" SIGNAL HEAD VISOR (POLYCARBONATE)	EACH	6
X1400045	ELASTIMOLD FUSE HOLDER	EACH	4
X1400046	RED MARKING PAINT	EACH	10
X1400047	SOLID STATE NEMA FLASHER	EACH	4
X1400048	SOLID STATE NEMA LOAD SWITCH	EACH	2
X1400049	12" LED MODULE (GREEN)	EACH	6
X1400050	12" LED MODULE (YELLOW)	EACH	2
X1400051	12" LED MODULE (RED)	EACH	6
X1400052	250W-240V HPS TRANSFORMER KIT (HALOPHANE)	EACH	2
X1400053	BREAKAWAY COUPLERS (TRANSP0 4100)	SET	4

CODE NO.	ITEM	UNIT	TOTAL QUANTITY
XP000001	JOURNEYMAN ELECTRICIAN	HOUR	300
XP000003	JOURNEYMAN ELECTRICIAN (WEEKLY OVERTIME RATE)	HOUR	8
XP000004	JOURNEYMAN ELECTRICIAN (SATURDAY OVERTIME RATE)	HOUR	8
XP000005	JOURNEYMAN ELECTRICIAN (SUNDAY AND HOLIDAY OVERTIME RATE)	HOUR	8
XP000009	PICK-UP TRUCK	HOUR	110
XP000011	BUCKET TRUCK 35-65	HOUR	96
XP000010	BUCKET TRUCK < 35	HOUR	40

**GENERAL NOTES**

This work is located on various routes in Hancock, Adams, Pike, Brown and Schuyler counties all located within Region 4, District 6. The work included in this section consists of maintaining and repairing the electrical systems and all other work necessary to complete this section.

The locations of the repair areas shall be determined by the engineer.

All work is to be replaced in kind or, as indicated on the contract plans or provisions.

Removal of damaged materials will include dismantling, loading, hauling, and disposal.

Any necessary traffic control will be provided by the contractor; appropriate standards are listed on Sheet No. 2. Traffic control shall not be paid for as separate pay items, but shall be considered a part of the contract.

The work site shall be left in a safe and orderly condition.

No material should be left on or near the roadway during non-working hours.

All excavated material, which includes digging or grading of any soil or fill material, with the exception of aggregate fills, must be left on, or incorporated within, the IDOT right-of-way due to environmental documentation requirements.

Any work order may be cancelled at the engineer's discretion.

English units of measurement shall govern over and supersede any metric units in this contract. Where included, metric units are for information only.

Electronic files and/or electronic survey information including CADD files will not be available for this project to the contractor.

No overnight lane closures will be allowed, unless emergency conditions exist.

Any reference to a standard in these plans shall be interpreted to mean the edition as indicated by the subnumber shown in the list of standards or the copy included in these plans.

23

7

FILE NAME : S:\CONTRMAINT\CAD\72J58 - LIGHTING 2017	USER NAME : sharpst	DESIGNED -	REVISED -	<b>STATE OF ILLINOIS DEPARTMENT OF TRANSPORTATION</b>	<b>SUMMARY OF QUANTITIES AND GENERAL NOTES</b>	RTE.	SECTION	COUNTY	TOTAL SHEETS	SHEET NO.
WEST\plans\0672J58-shr13-900.dgn	DRAWN -	REVISED -	VAR.			06 LIGHTING 2017-1	VARIOUS	3	3	
PLOT SCALE : 3.0000 ' / in	CHECKED -	REVISED -	CONTRACT NO. 72J58							
PLOT DATE : 12/13/2016	DATE -	REVISED -	ILLINOIS FED. AID PROJECT							