

STATE OF ILLINOIS
DEPARTMENT OF TRANSPORTATION

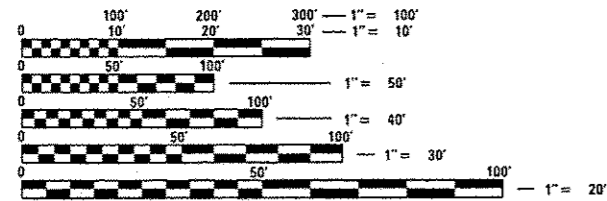
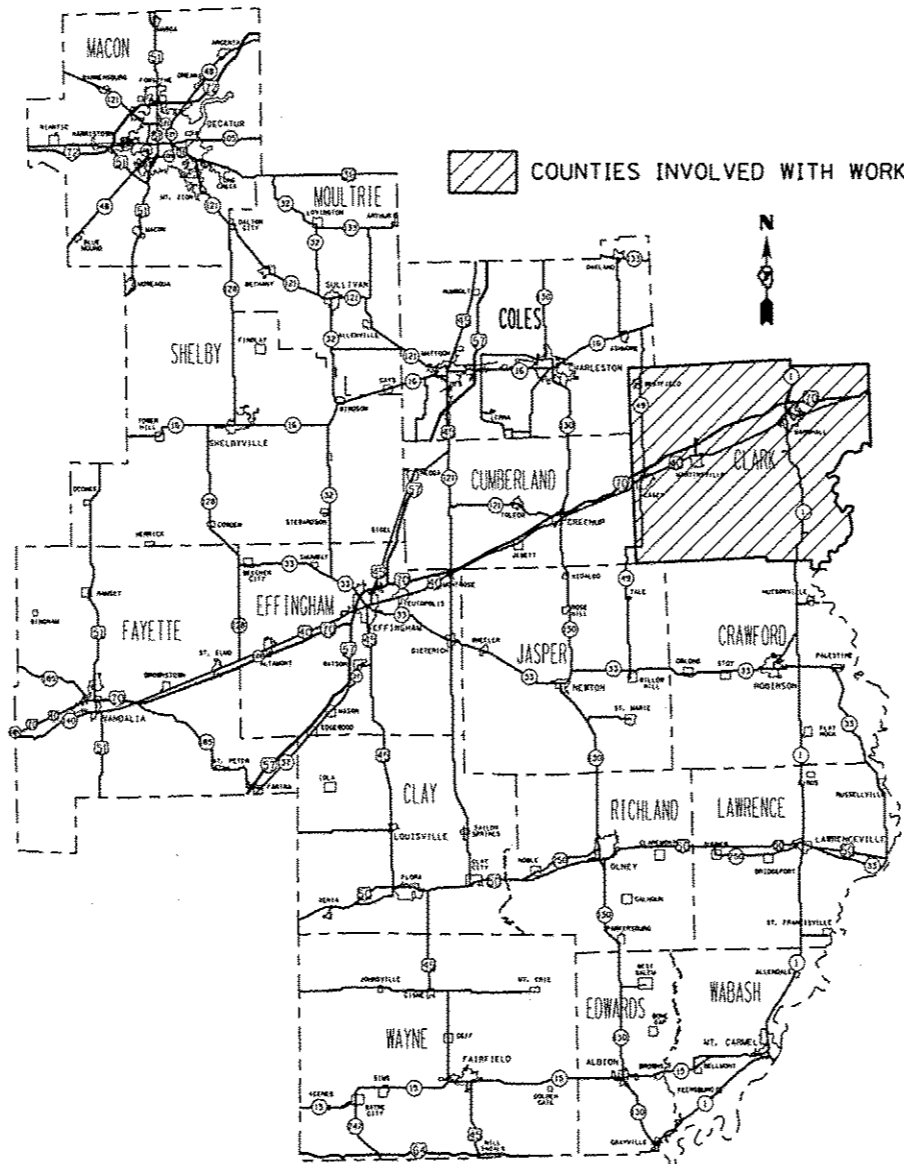
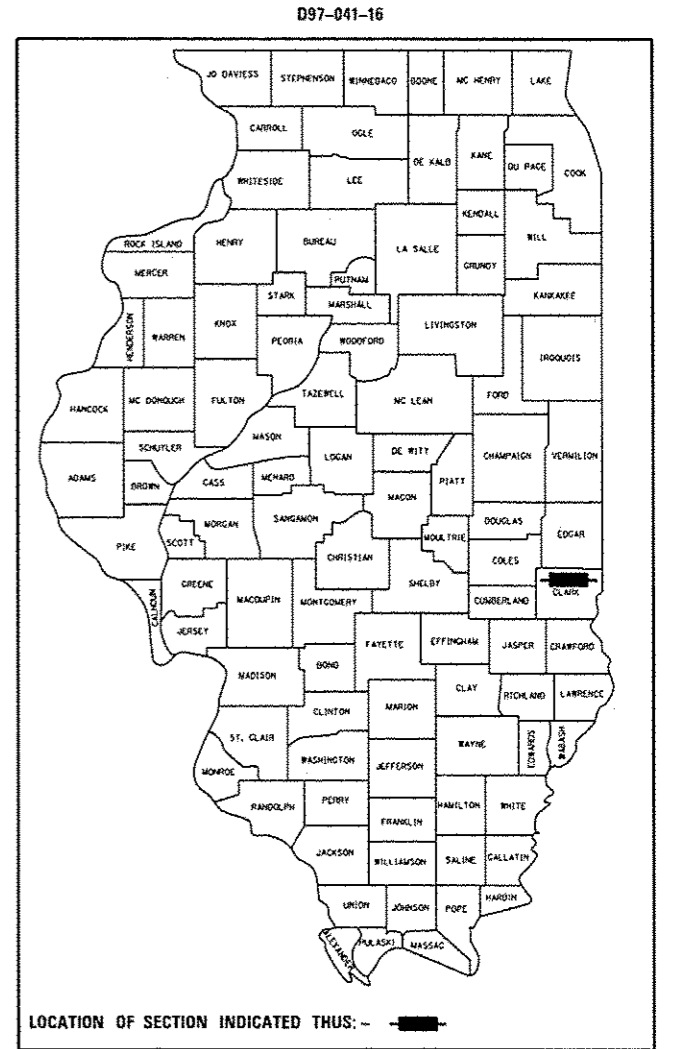
F.A. RTE.	SECTION	COUNTY	TOTAL SHEETS	SHEET NO.
FAI 70		CLARK	9	1
		ILLINOIS	CONTRACT NO. 74777	

* 07 BRIDGE PAINTING 2017-5

FOR INDEX OF SHEETS, SEE SHEET NO. 2

**PROPOSED
HIGHWAY PLANS**

FAI 70 (I-70)
SECTION D7 BRIDGE PAINTING 2017-5
BRIDGE PAINTING
CLARK COUNTY
C-97-072-16



FULL SIZE PLANS HAVE BEEN PREPARED USING STANDARD ENGINEERING SCALES. REDUCED SIZED PLANS WILL NOT CONFORM TO STANDARD SCALES. IN MAKING MEASUREMENTS ON REDUCED PLANS, THE ABOVE SCALES MAY BE USED.

J.U.L.I.E.
JOINT UTILITY LOCATION INFORMATION FOR EXCAVATION
1-800-892-0123
OR 811

PROJECT ENGINEER: TOM RONAN
PROJECT MANAGER: TOM RONAN
PHONE: (217)-342-8320
CONTRACT NO. 74777

STATE OF ILLINOIS
DEPARTMENT OF TRANSPORTATION

SUBMITTED December 14, 2016
Jeffrey M. South
REGIONAL ENGINEER

Jan 27, 2017
Maween M. Addis
ENGINEER OF DESIGN AND ENVIRONMENT

Jan 27, 2017
[Signature]
DIRECTOR OF PROGRAM DEVELOPMENT

PRINTED BY THE AUTHORITY
OF THE STATE OF ILLINOIS

INDEX OF SHEETS

SHEET NO.	ITEM
1	COVER SHEET
2	INDEX OF SHEETS, GENERAL NOTES &. LOCATION DESCRIPTIONS
3	SUMMARY OF QUANTITIES
4-9	EXISTING STRUCTURE PLANS

THE FOLLOWING STANDARDS ARE A PART OF THESE PLANS AND ARE INCLUDED AFTER SHEET NO. 9:

STD. NO.	DESCRIPTION
000001-06	STANDARD SYMBOLS, ABBREVIATIONS AND PATTERNS
701101-05	OFF-ROAD OPERATIONS, MULTILANE, 15' TO 24" FROM PAVEMENT EDGE
701106-02	OFF-RD OPERATIONS, MULTILANE, MORE THAN 15' AWAY
701400-09	APPROACH TO LANE CLOSURE - FREEWAY/EXPRESSWAY
701401-10	LANE CLOSURE, FREEWAY/EXPRESSWAY
701402-12	LANE CLOSURE, FREEWAY/EXPRESSWAY WITH BARRIER
701901-06	TRAFFIC CONTROL DEVICES
704001-08	TEMPORARY CONCRETE BARRIER

GENERAL NOTES

THIS SECTION SHALL BE CONSTRUCTED IN ACCORDANCE WITH THE PLANS, THE "STANDARD SPECIFICATIONS FOR ROAD AND BRIDGE CONSTRUCTION" ADOPTED APRIL 1, 2016; THE SUPPLEMENTAL SPECIFICATIONS, THE RECURRING SPECIAL PROVISIONS, AND THE SPECIAL PROVISIONS INCLUDED IN THE PROPOSAL.

THE PROPOSED PROJECT IS LOCATED AT 2 LOCATIONS IN CLARK COUNTY IN DISTRICT 7.

THE WORK INCLUDED IN THIS SECTION CONSISTS OF CLEANING AND PAINTING THE BRIDGES AS SPECIFIED IN THE PLANS AND SPECIAL PROVISIONS.

THE STRUCTURAL STEEL SHALL BE CLEANED AND PAINTED AS SPECIFIED IN THE PLANS AND SPECIAL PROVISIONS.

ALL DECK DRAINS SHALL BE PAINTED ACCORDING TO THE REQUIREMENTS OF PAINT SYSTEM 1 - OZ/E/U. ANY DAMAGE CAUSED BY THE CONTRACTOR SHALL BE REPAIRED AT THEIR OWN EXPENSE AND NO ADDITIONAL COMPENSATION WILL BE ALLOWED.

ONLY STRUCTURAL STEEL IS TO BE PAINTED. ALL OTHER SURFACES WILL BE PROTECTED FROM BEING PAINTED. ALL PAINT AND OVERSPRAY WILL BE REMOVED AT THE CONTRACTOR'S EXPENSE.

THE SSPC OP1 AND OP2 PAINTING CONTRACTOR CERTIFICATION WILL BE REQUIRED FOR THIS PROJECT.

BRIDGE LOCATION DESCRIPTIONS

LOCATION #1

BRIDGE NO. 1
ROUTE: TR 198
MARKED: TR 198
SECTION: 12-52HB
STATION: 1400+20
STRUCTURE NUMBER: 012-0043

TYPE OF BRIDGE: Wide Flange I Beams-4 Spans (4 Beams)
LOCATION: 4.5 miles west of Illinois Route 1
FEATURE CARRIED/SPANNED: TR 198 over I-70

COLOR OF THE FINISH COAT SHALL BE GRAY, MUNSELL 5B 7/1.

Cleaning and painting of the existing structural steel shall be as specified in the special provision for "Cleaning and Painting Existing Steel Structures". All structural steel, including beams, bearings and diaphragms, shall be cleaned by SSPC-SP10- Near White Metal Blast Cleaning.

The designated areas cleaned per Near White Metal Blast Cleaning - SSPC-SP10 shall be painted according to the requirements of Paint System 1 - OZ/E/U.

No air monitors will be required at this location.

LOCATION #2

BRIDGE NO.2
ROUTE: TR 340
MARKED: TR 340
SECTION: 12-54HB-1
STATION: 397+01.60
STRUCTURE NUMBERS: 012-0046

TYPE OF BRIDGES: Wide Flange I Beams-4 Spans (5 Beams)
LOCATION: 3 miles west of the Indiana state line
FEATURE CARRIED/SPANNED: TR 340 over I-70

COLOR OF THE FINISH COAT SHALL BE GRAY, MUNSELL 5B 7/1.

Cleaning and painting of the existing structural steel shall be as specified in the special provision for "Cleaning and Painting Existing Steel Structures". All structural steel, including beams, bearings and diaphragms, shall be cleaned by SSPC-SP10- Near White Metal Blast Cleaning.

The designated areas cleaned per Near White Metal Blast Cleaning - SSPC-SP10 shall be painted according to the requirements of Paint System 1 - OZ/E/U.

Two air monitors will be required at this location.

FILE NAME : USER NAME : staffernk DESIGNED - REVISIONS - CHECKED - DATE -				DRAWN TO: CAD sheets\0774777-ahg-genn... REVISED - REVISIONS - DATE -				STATE OF ILLINOIS DEPARTMENT OF TRANSPORTATION				INDEX OF SHEETS, GENERAL NOTES AND BRIDGE LOCATIONS				F.A.J. RTE. SECTION COUNTY TOTAL SHEETS SHEET NO. 70 * CLARK 9 2	
PLOT SCALE : 1/8" = 1' / in. PLOT DATE : 12/12/2016								SCALE: SHEET OF SHEETS STA. TO STA.				CONTRACT NO. 74777 ILLINOIS FED. AID PROJECT					

• 07 BRIDGE PAINTING 2017-5

100 %
STATE

SUMMARY OF QUANTITIES			TOTAL QUANTITIES	CONSTRUCTION TYPE CODE		
CODE NO	ITEM	UNIT		0014		
67100100	MOBILIZATION	LSUM	1	1		
70100207	TRAFFIC CONTROL AND PROTECTION, STANDARD 701402	EACH	4	4		
70100800	TRAFFIC CONTROL AND PROTECTION, STANDARD 701401	LSUM	1	1		
70400100	TEMPORARY CONCRETE BARRIER	FOOT	550	550		
70400200	RELOCATE TEMPORARY CONCRETE BARRIER	FOOT	1650	1650		
70600250	IMPACT ATTENUATORS, TEMPORARY (NON- REDIRECTIVE), TEST LEVEL 3	EACH	2	2		
70600350	IMPACT ATTENUATORS, RELOCATE (NON- REDIRECTIVE), TEST LEVEL 3	EACH	6	6		
X7015005	CHANGEABLE MESSAGE SIGN	CAL DA	56	56		
X7040125	PINNING TEMPORARY CONCRETE BARRIER	EACH	216	216		
Z0007112	CONTAINMENT AND DISPOSAL OF LEAD PAINT CLEANING RESIDUES	LSUM	1	1		
Z0010501	CLEANING AND PAINTING STEEL BRIDGE NO. 1	LSUM	1	1		
Z0010502	CLEANING AND PAINTING STEEL BRIDGE NO. 2	LSUM	1	1		

SUMMARY OF QUANTITIES			TOTAL QUANTITIES	CONSTRUCTION TYPE CODE		
CODE NO	ITEM	UNIT		0014		

FILE NAME :	USER NAME : staffanrk	DESIGNED -	REVISED -
p:\1\004\01\01\TEG\Illinois.gov\100T\Documents\100T Offices\District 7\Projects\7477\Drawings\CAD\Sheets\0774777-plt-500.dgn		CHECKED -	REVISED -
			REVISED -
		DATE -	REVISED -
Default	PLOT SCALE = 100.0000' / in.		
	PLOT DATE = 12/12/2016		

**STATE OF ILLINOIS
DEPARTMENT OF TRANSPORTATION**

SUMMARY OF QUANTITIES

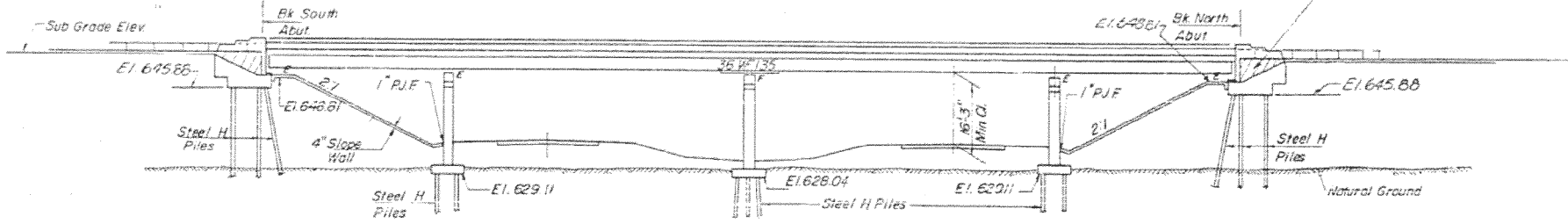
SCALE: SHEET OF SHEETS STA. TO STA.

* DT BRIDGE PAINTING 2017-5		F.A.I. RTE.	SECTION	COUNTY	TOTAL SHEETS	SHEET NO.
TO				CLARK	9	3
				CONTRACT NO. 74777		
		ILLINOIS FED. AID PROJECT				

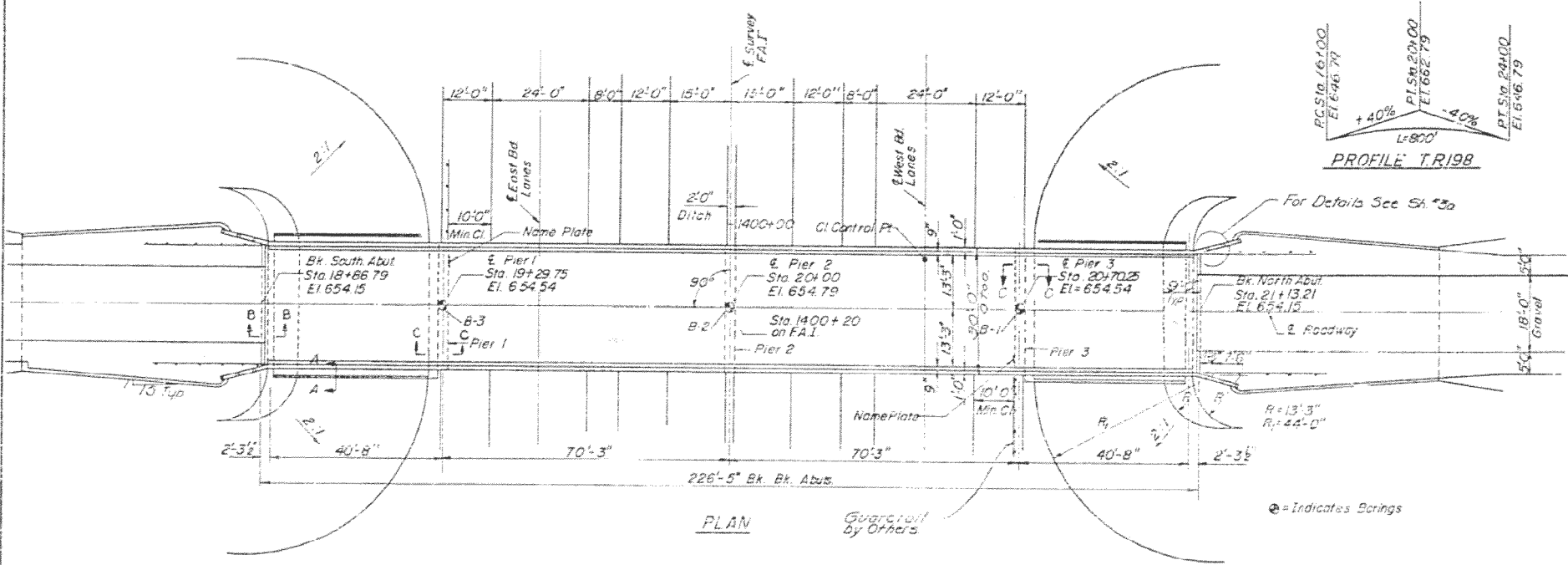
B.M. RR Spike in Power Pole 1,250' Rt. of FAI 70
Sta 1396+00 East Side of TR 198 El 629.61

STATE OF ILLINOIS
DEPARTMENT OF PUBLIC WORKS & BUILDINGS
DIVISION OF HIGHWAYS

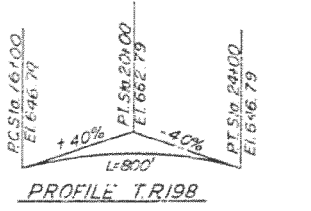
PROJECT NO.	SECTION	DATE	TOTAL SHEETS	SHEET NO.
1-70-4	52 HB	CLARK	32	10
SHEETS				



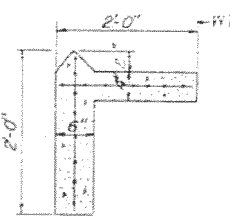
ELEVATION



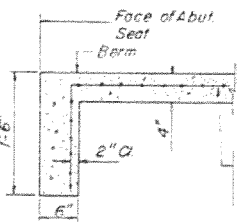
PLAN



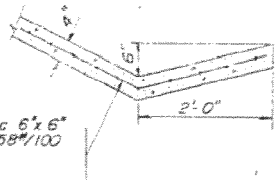
PROFILE TR198



SEC. AA

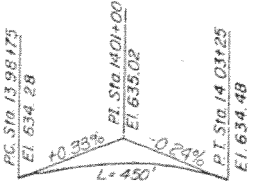


SEC. BB

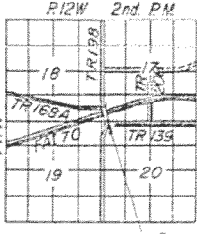


SEC. CC

Welded wire fabric 6"x6" mesh #4 Wires wt. 58#/100 Sq. Ft.



PROFILE FAI



LOCATION PLAN

STATION 1400+20
BUILT 196 BY
STATE OF ILLINOIS
FAI RT 70 SEC. 12-52 HB
FA. PROJ. 1-70-4(14)
LOADING HS 15

NAME PLATE
(See Standard 2113-1)

DESIGN STRESSES
fc = 1400 psi. (Super & Sub)
fs = 20,000 psi. (Reinf.)
fs = 20,000 psi. (Struct.)
vc = 75 psi. (Figs)
n = 10
Allowable $\frac{1}{4}$ A1000

LOADING HS-15-44

GENERAL NOTES

The concrete floor slab shall be finished in accordance with Art 51.19 of the Standard Specifications.
Sloped wall shall be reinforced with welded wire fabric 6"x6" mesh, weight 58#/100 Sq. Ft.
All reinforcement bars shall be lapped 20 diameters unless otherwise shown.
Anchor bolts shall be set before riveting diaphragms over supports.
The exposed surfaces of the expansion guard shall be given two shop coats of red lead paint, the contact surfaces shall be given one coat of red lead paint. Anchor studs shall not be painted.
Expansion guards are included in the quantity of Structural Steel. Estimated weight 700 lbs.
Except as otherwise provided, all Structural Steel shall receive one shop coat of red lead paint and two field coats of paint. See Special Provisions for Field Paint.
The contractor shall drive one steel test pile in a permanent location at the North Abutment as directed by the Engineer before ordering the remainder of piles.
Excavation for portions of structures in the embankment shall not be classified.
Coarse aggregate to be used in parapet handrails and endposts must be free of chert, flint, limonite, lignite and soft sandstone.
Rivers & P. Open holes $\frac{3}{8}$ " unless otherwise noted.
All Structural Steel shall conform to ASTM designation A36.
Permanent forms are not permitted in forming the concrete floor.
Field welding of construction accessories to the bottom flanges or for a distance of $\frac{1}{4}$ of the span each way from pier supports on the top flanges of beams or girders will not be permitted. Field welding in other areas will be permitted only when approved by the Engineer.

TOTAL BILL OF MATERIALS

Item	Unit	Super	Sub	Total
Class "X" Concrete	Cu. Yds.	199.0	181.6	380.6
Reinforcement Bars	Lbs.	51340	17650	68990
Structural Steel	Lbs.	147340		147340
Aluminum Handrail	Lin. Ft.	447		447
Name Plates	Each		2	2
Slope Wall	Sq. Yds.		343.0	343.0
Steel Piles (8BP36)	Lin. Ft.		1328	1328
Test Piles Steel (8BP36)	Each		1	1
Class "A" Excavation for Structures	Cu. Yds.		20	20
Protective Coat	Sq. Yds.	869		869

* Unless use on inside vertical face, top & exposed ends of wing walls.
* Also includes excavation for slope wall.

DESIGNED	J. Ferrando
CHECKED	J. Ferrando
DRAWN	J. Ferrando
CHECKED	J. Ferrando

EXAMINED	Nov 8 1965
PASSED	
APPROVED	

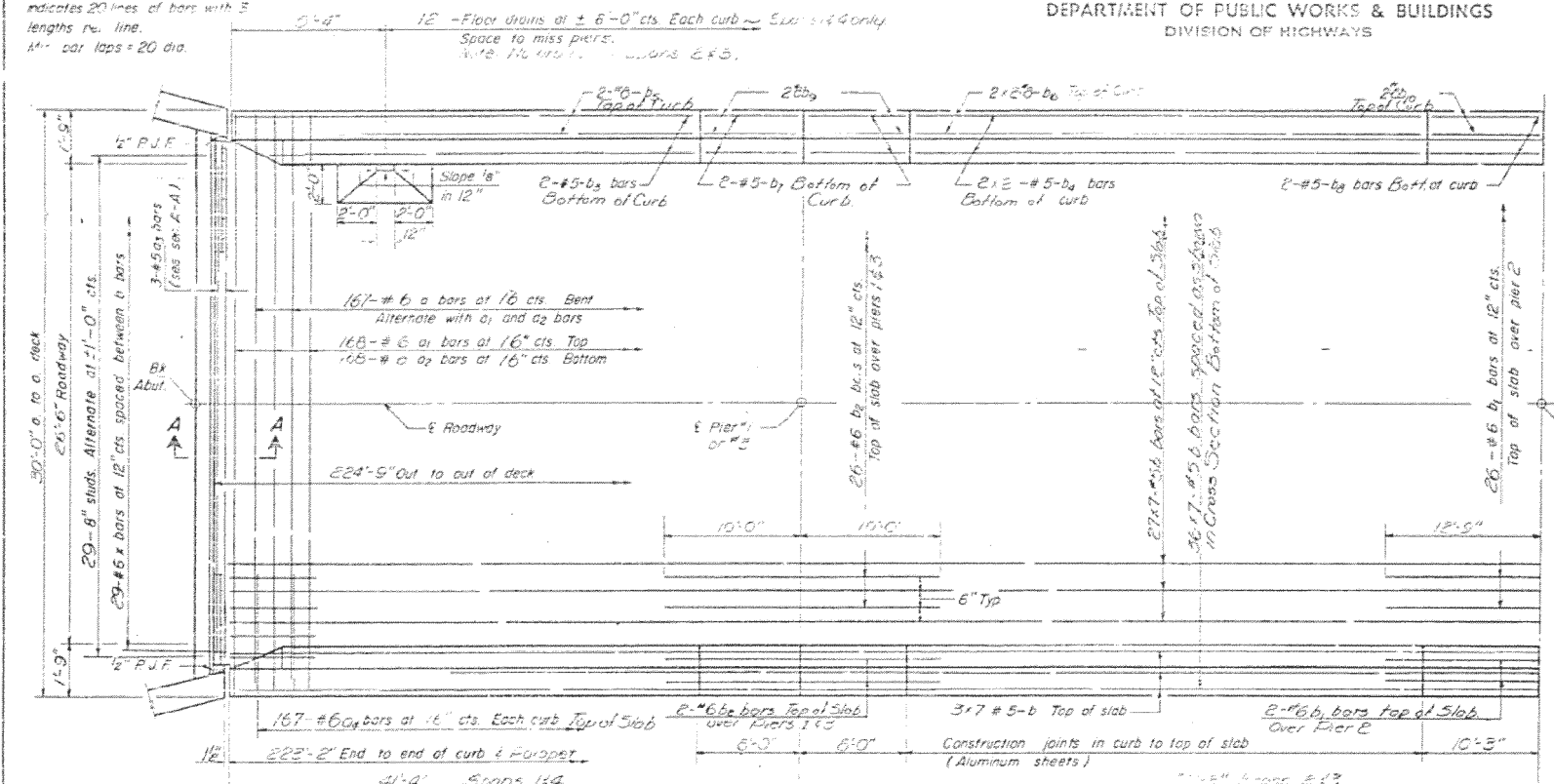
Rev. 2-26-68 LC

PROJ. 1-70-4(14) 1142
GENERAL PLAN & ELEVATION
OF
TR198 OVER FAI
FAI RT. 70 SEC. 12-52 HB
CLARK COUNTY
STATION 1400+20 (FAI)

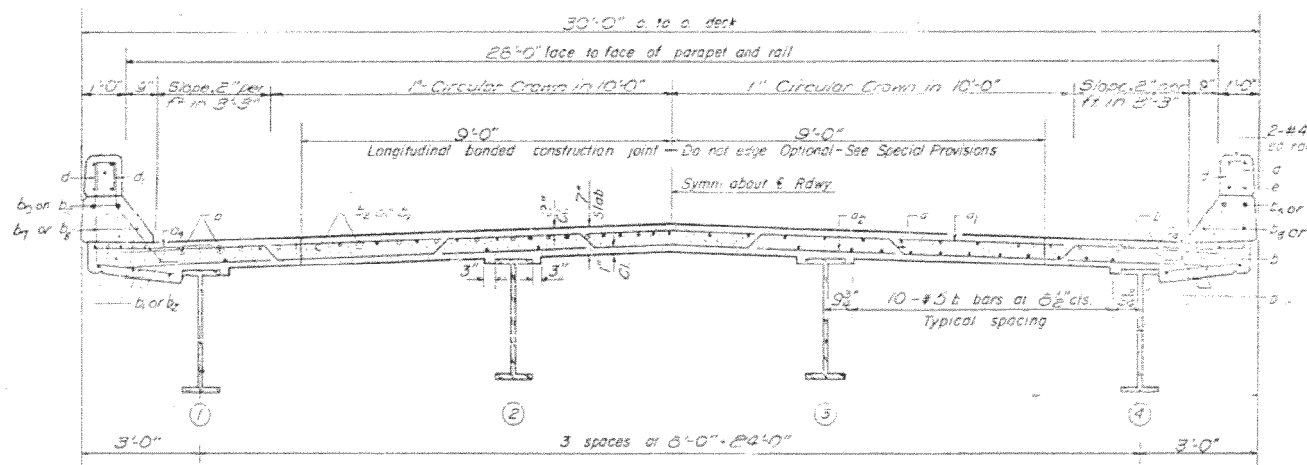
STATE OF ILLINOIS
DEPARTMENT OF PUBLIC WORKS & BUILDINGS
DIVISION OF HIGHWAYS

DATE	DESIGNED	CHECKED	DRAWN	SHEET NO.
12-1-55	CLARK	32	11	9 SHEETS

Note:
Bars indicated thus 20x3-#5 etc.
indicates 20' length of bars with 3
lengths per line.
1/2" bar laps = 20 dia.



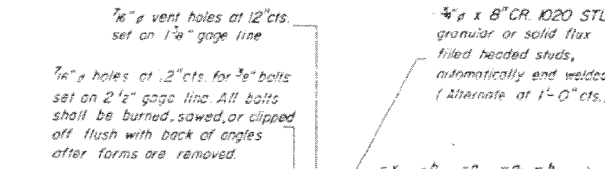
HALF PLAN



NEAR PIER

CROSS SECTION
LOOKING NORTH

NEAR MIDSPAN



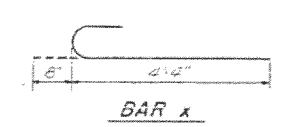
SECTION A-A



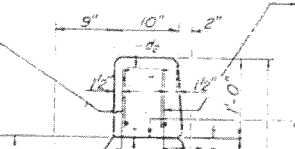
BAR a1



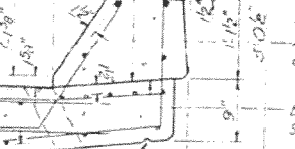
BAR d2



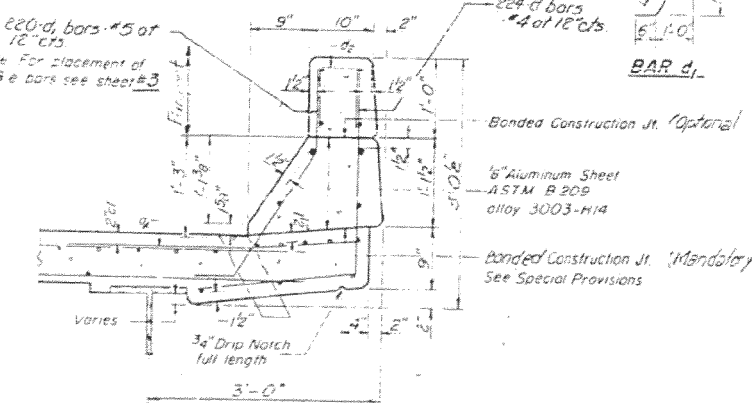
BAR x



BAR d

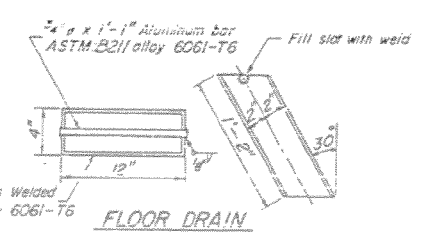


BAR d1



CURB SECTION

Cast of Aluminum Drains and Sheets shall be incidental to Class X Concrete



FLOOR DRAIN

BILL OF MATERIAL

Bar	No.	Size	Length	Shape	
a	167	#6	25'-3"		
a1	158	#6	22'-2"		
a2	163	#6	28'-0"		
a3	6	#5	6'-0"		
a4	334	#6	4'-0"		
b	223	#5	37'-0"		
b1	30	#6	25'-6"		
b2	22	#6	20'-0"		
b3	8	#5	22'-9"		
b4	16	#5	26'-6"		
b5	8	#5	33'-0"		
b6	16	#5	26'-9"		
b7	16	#5	7'-9"		
b8	8	#5	10'-0"		
b9	16	#8	7'-9"		
b10	8	#8	10'-0"		
c	440	#5	4'-7"		
c1	440	#5	3'-5"		
d	59	#6	5'-0"		
				Reinforcement Bars	Lbs 50020
				Structural Steel	Lbs 147340
				Class X Concrete	Cu Yd 1845

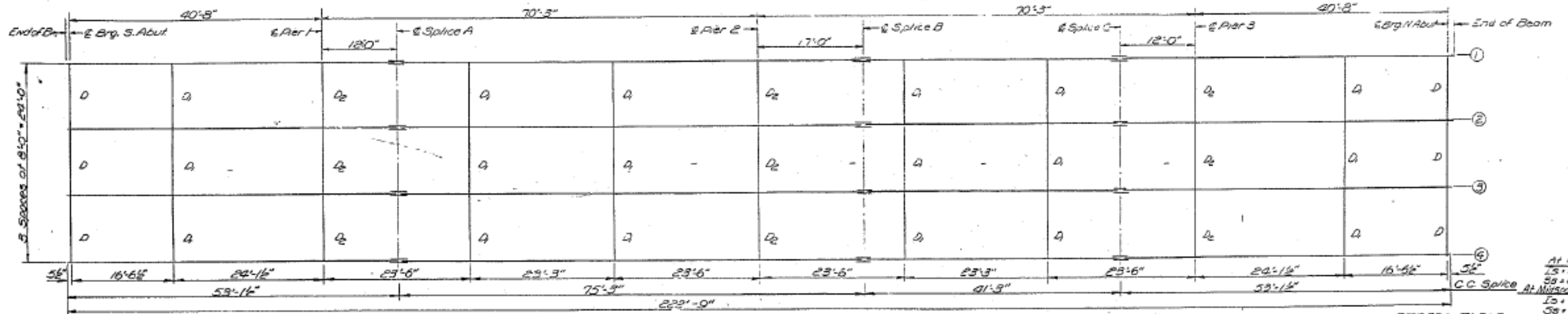
* Weight of bearing assemblies with lead plates and anchor bolts are included as structural steel.
Est. Wt. = 5980 Lbs.

The lengths and quantities of longitudinal reinforcement and Class X Concrete in parapets are not included in above quantities. See sheet 3.

SUPERSTRUCTURE
TR 198 OVER FAI
FAI RT 70 SEC 12-52 HB
CLARK COUNTY
STA 1490+20

DESIGNED	Nov 9 1965
CHECKED	EXAMINED
DRAWN	PASSED
CHECKED	APPROVED

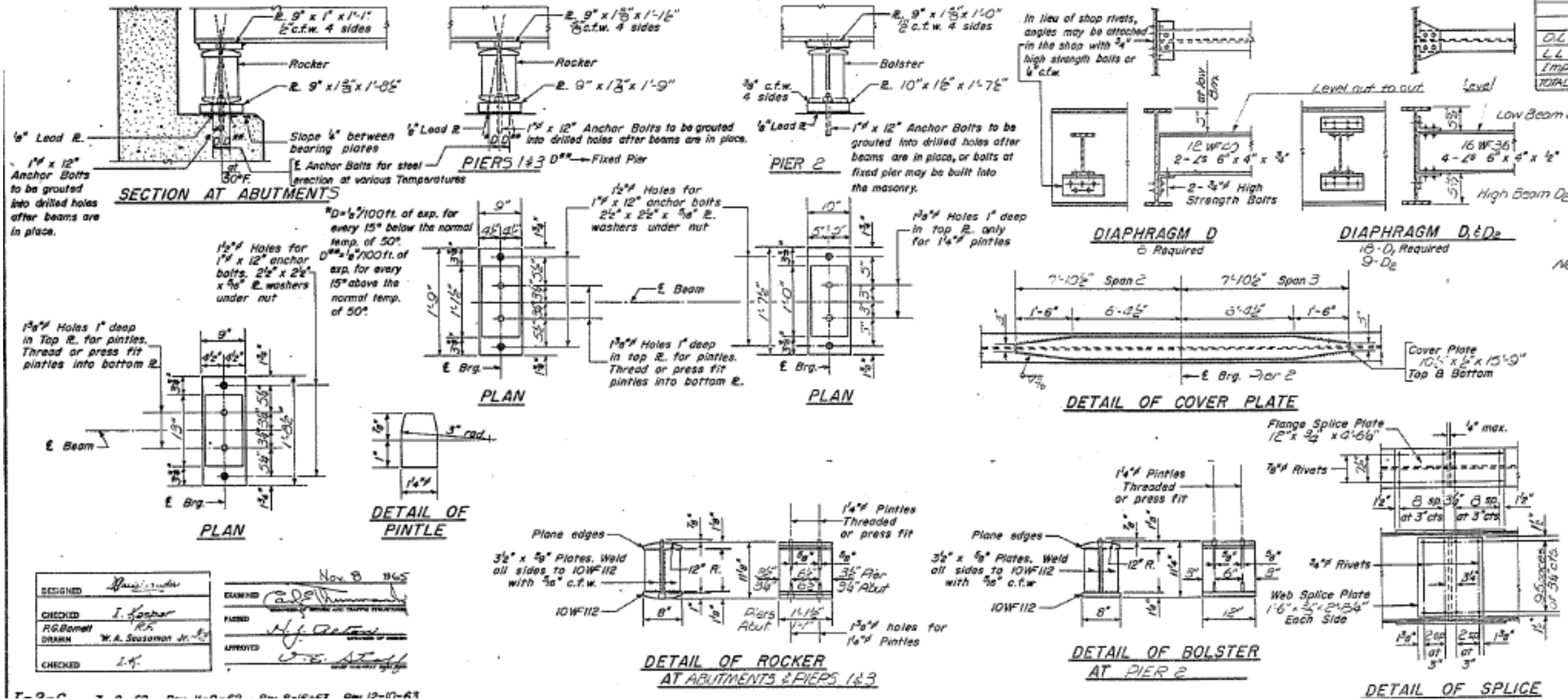
I-4-0 B-1-65



STRESS TABLE

MOMENTS & REACTIONS - INTERIOR BEAMS							
	MOMENTS in Ft. Kips				Reactions in K.		
	ASPI	PIER 1	5 SPICE	PIER 2	ABUT	PIER 1	DEP
D.L	84.68	571.18	2250.2	551.65	1260	67.18	83
L.L	211.10	290.97	312.91	515.95	2833	38.32	37
Imp	63.33	62.63	60.10	60.29	8.88	10.65	9
TOTAL	359.11	924.68	5982.03	1127.99	5146	116.15	130

FRAMING PLAN (All BMS 35W735)



ELEVATION TOP OF WF
Note: Subtract .04' from values given in ft. for correct top of WF elevations.

LOCATION	BM 1	BM 2	BM 3	BM
E. Brg. 5 Abut	653.52	653.62	653.62	65
E. of Pier 1	653.82	653.92	653.92	65
E. of Splice A	653.92	654.02	654.02	65
E. of Pier 2	654.02	654.12	654.12	65
E. of Splice B	654.08	654.18	654.18	65
E. of Splice C	653.92	654.02	654.02	65
E. of Pier 3	653.82	653.92	653.92	65
E. Brg. 11 Abut	653.52	653.62	653.62	65

STRUCTURAL STEEL
TR 198 OVER FAI
FAI RTD SEC 12
CLARK COUNTY
STA 1400 +20

D7 BRIDGE PAINTING 2017-5

DESIGNED: J. K. ...
CHECKED: I. K. ...
DRAWN: W. A. ...
DATE: 12/12/2016

STATE OF ILLINOIS
DEPARTMENT OF TRANSPORTATION

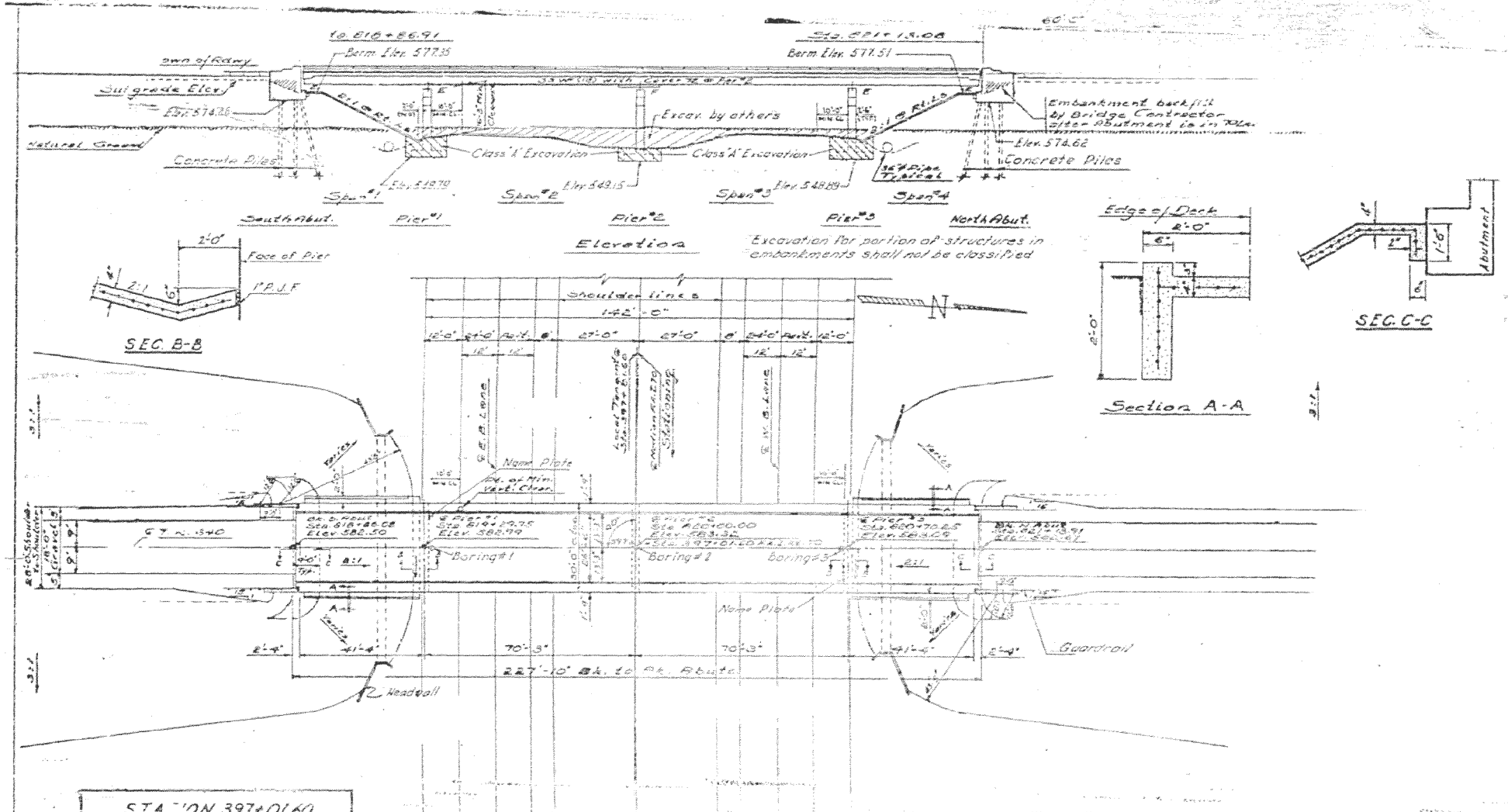
EXISTING STRUCTURE PLANS
012-0043
SCALE: SHEET OF SHEETS STA. TO STA.

F.A.I. RTE.	SECTION	COUNTY	TOTAL SHEETS	SHEET NO.
70		CLARK	9	6
CONTRACT NO. 74777				
ILLINOIS FED. AID PROJECT				

D.M. # 107 at T.R. 3+0, Right of R.A.I. 70 Survey Line
Elev. 565.27 (Horiz. Spike in Power Pole)

STATE OF ILLINOIS
DEPARTMENT OF PUBLIC WORKS & BUILDINGS
DIVISION OF HIGHWAYS

PROJECT NO.	SECTION	SHEET NO.	TOTAL SHEETS
12-54	15	10	147



GENERAL NOTES

Coarse aggregate to be used in concrete handrails and end post must be free of chert, flint, limonite, lignite and soft sandstone.

The concrete floor slab shall be finished in accordance with Art. 5.19 of the Standard Specifications.

Slope Wall shall be reinforced with welded wire fabric 5"x5" mesh, weighing 58# per 100 Sq. Ft.

All reinforcement bars shall be lapped 20 diameters unless otherwise shown.

All structural steel shall conform to A.S.T.M. Designation A-36. Rivets 3/4" Open Holes 1/8" unless otherwise noted. Anchor bolts shall be set before fastening disjunctive connections.

Exposed surfaces of the expansion devices, inaccessible after erection, shall receive two shop coats of red lead paint. All other surfaces shall be given one shop coat of red lead paint. Anchor studs shall not be painted.

Expansion devices are included in the quantity of structural steel. Est. weight = 740 Lbs.

Except as otherwise provided, all structural steel shall receive one shop coat of red lead paint and two field coats of paint. See Special Provisions for Field Painting.

Concrete piles at Abutments shall be driven in holes prepared thru the embankment in accordance with Article 60.9(a) of the Standard Specifications.

The contractor shall drive one concrete test pile at the South Abutment, in a permanent location as directed by the Engineer before ordering the remainder of piles.

Field welding of construction accessories to the bottom flanges or for a distance of 1/4 of the span each way from pier supports on the top flanges of beams or girders will not be permitted. Field welding in other areas will be permitted only when approved by the Engineer.

TOTAL BILL OF MATERIAL

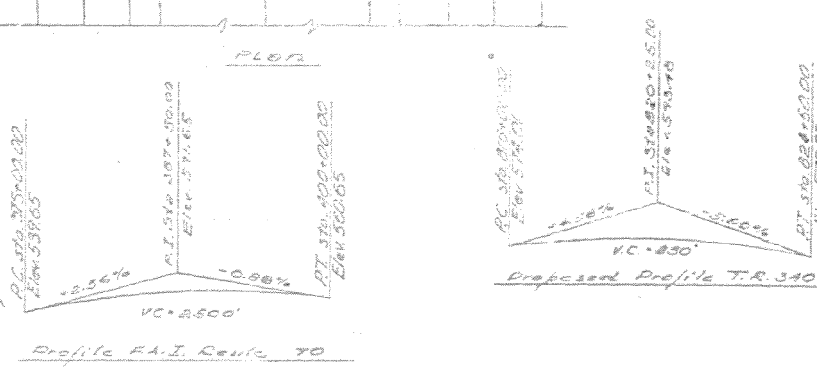
ITEM	UNIT	SUPER	SUB	TOTAL
Class 'A' Excavation for Structures	Cu. Yds.		370	370
Class 'X' Concrete	Cu. Yds.	213.8	229.8	443.3
Structural Steel	Lbs.	106,470		106,470
Aluminum Handrail	Lin. Ft.	449		449
Reinforcement Bars	Lbs.	44,220	17,720	61,940
Concrete Piles	Lin. Ft.		603	603
Test Piles (Concrete)	Each		1	1
Name Plates	Each		2	2
Slope Wall (#)	Sq. Yds.		376	376
Protective Coat	Sq. Yds.	890		890
Pipe Culvert (36" Type 2A)	Lin. Ft.			160

STA. 397+01.60
BUILT '96 BY
STATE OF ILLINOIS
F.A.I. RT. 70 SEC. 12-54HB-1
F.A. PROJ. I-16-70-4(62)
LOADING HS 15

NAME PLATE LETTERING
(See Spec. 2112.1)

DESIGNED: *T. J. Fall*
CHECKED: *Stanley S. Dan*
DRAWN: *J. Kessler*
CHECKED: *Stanley S. Dan*

EXAMINED: *Sept 14 1965*
PAGE: *4*
APPROVED: *W. H. [Signature]*

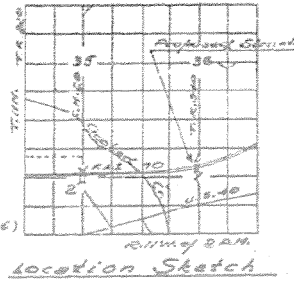


Curve Data F.A.I. 70

P.I. Sta. 397+54.67'
L = 19' 59" 53"
R = 5,729.58'
T = 1010.18'
L = 1,979.81'
E = 66.37'
D = 1' 00"
S.E. = 0.028 1/4

DESIGN STRESSES

fc = 1400 psi. Super. & Sub
fs = 75 psi Footing
ft = 20,000 psi. Reinft.
fs = 20,000 psi. Embed. (A-36)
s = 10
A4 = 7000



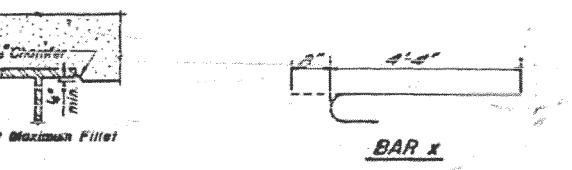
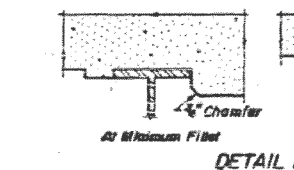
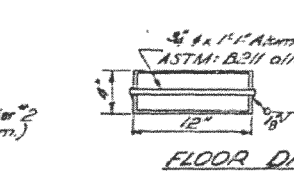
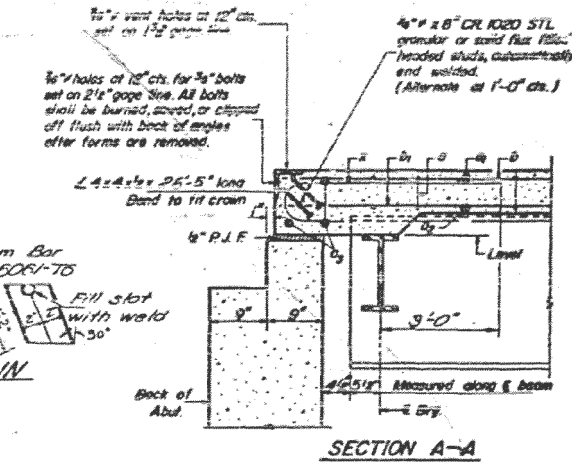
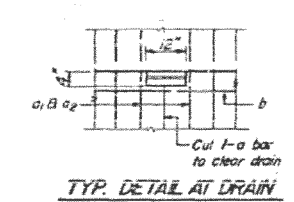
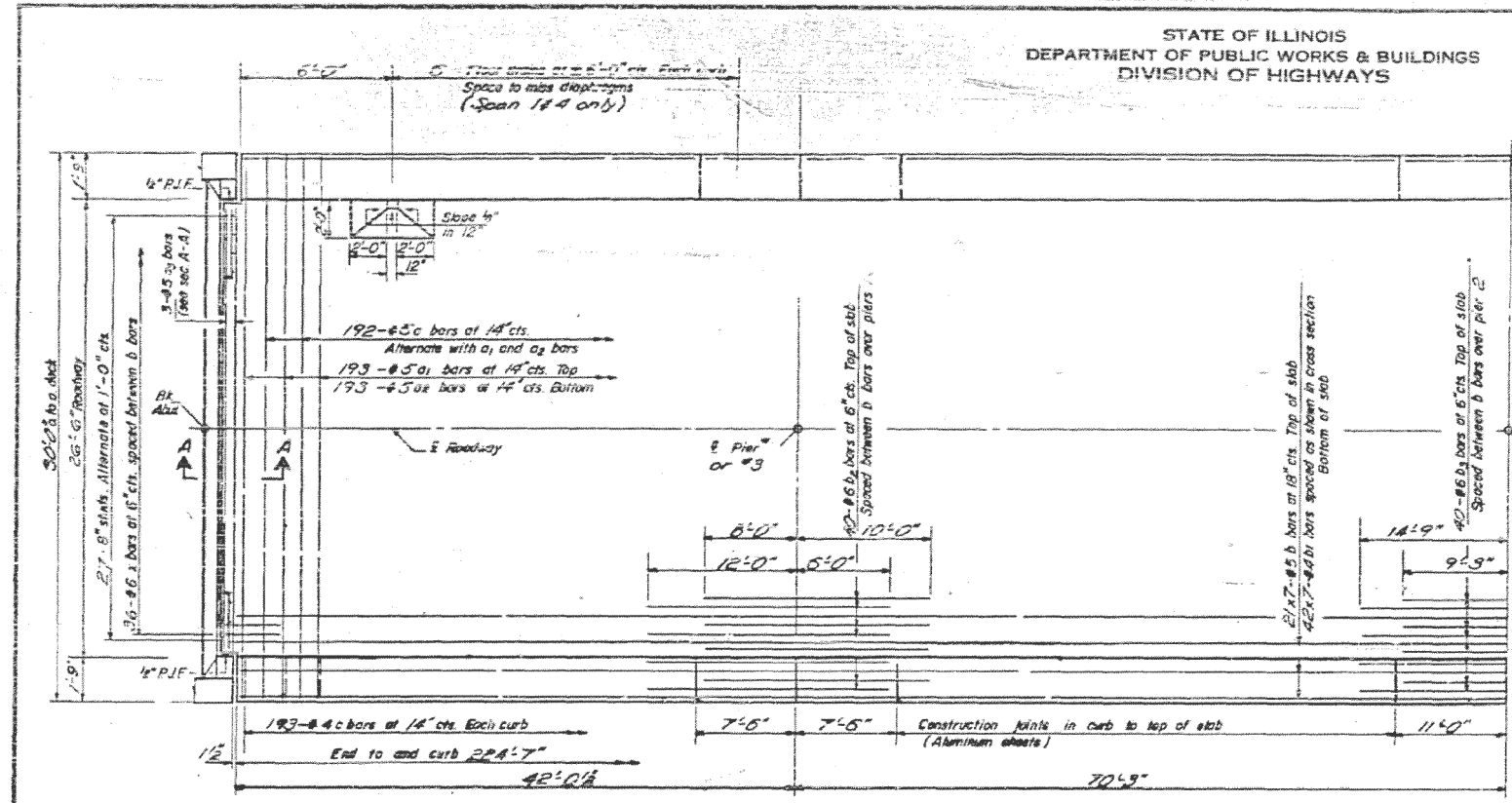
General Plan & Elevation
Project I-16-70-4(62) 147
T.R. 340 Over F.A.I. RT. 70
F.A.I. RT. 70 Section 12-54HB-1
Clark County
Sta. 397+01.60 F.A.I. 70

Rev. 3-10-67 C.L. Class X Conc. changed from 428.3 cu yds to 443.3 cu yds. Reinf. Bars changed from 60350 Lbs. to 61940 Lbs. Protective coat changed from 815 sq yds to 890 sq yds.

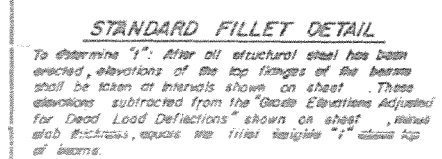
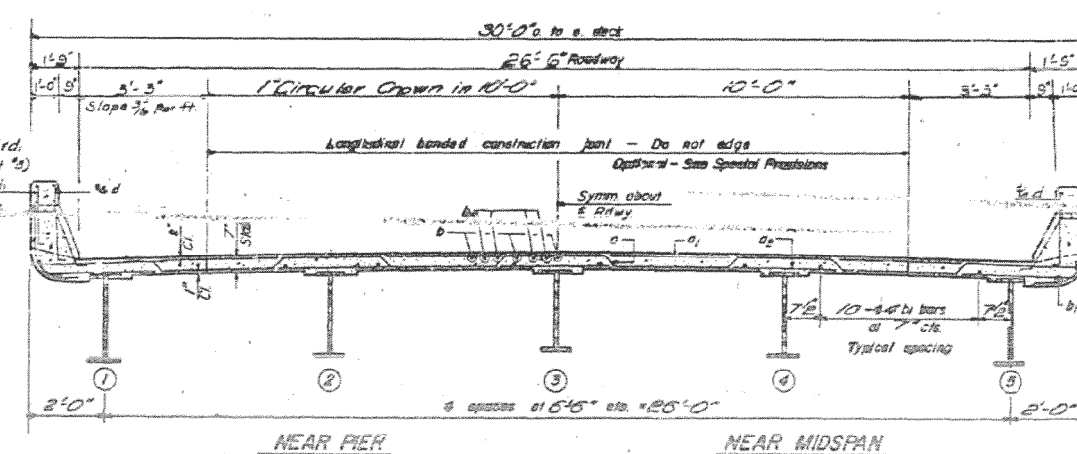
Rev. 6-2-67 Class X Conc. changed from 443.3 cu yds to 443.3 cu yds. Reinforcement Bars changed from 60350 Lbs. to 61940 Lbs. Structural Steel changed from 166470 Lbs. to 166470 Lbs.

STATE OF ILLINOIS
DEPARTMENT OF PUBLIC WORKS & BUILDINGS
DIVISION OF HIGHWAYS

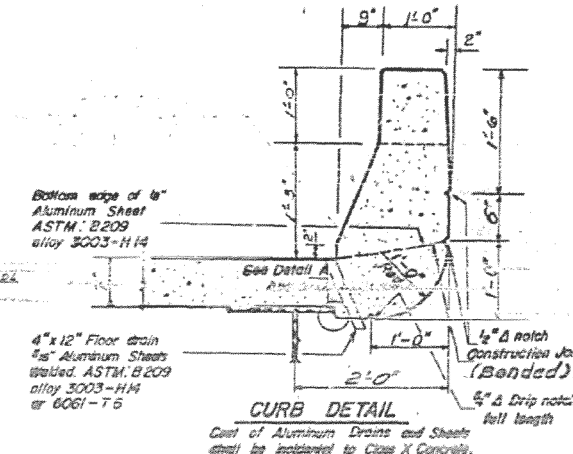
DATE	12-54	BY	CLARK	NO.	33	15
PROJECT	ST. JOHNS					



Note:
Bars indicated thus 20x3-#5 etc. indicates 20 lines of bars with 3 angles per line.
..... = 20 cts.



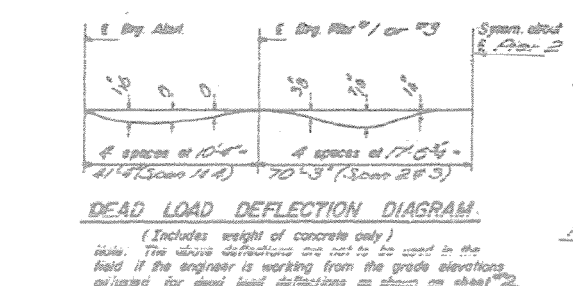
To determine "f". After all structural steel has been erected, elevations of the top flanges of the beams shall be taken at intervals shown on sheet. These elevations subtracted from the "Grade Elevations Adjusted for Dead Load Deflections" shown on sheet, minus slab thickness, equals the fillet height "f" above top of beams.



BILL OF MATERIAL

Bar No.	Size	Length	Shape
a	192 #5	30'-0"	
a ₁	193 #5	29'-5"	
a ₂	193 #5	29'-0"	
b	6 #5	23'-8"	
b ₁	177 #5	33'-3"	
b ₂	294 #4	33'-3"	
b ₃	80 #6	19'-0"	
b ₄	40 #6	26'-0"	
c	385 #4	5'-9"	
e	72 #6	5'-0"	

Reinforcement Bars Lbs. 57970
Structural Steel Lbs. 56870
Class X Concrete Cu Yd. 173.2



Weight of bearing assemblies with load plates, and anchor bolts are included as structural steel.
Est. Wt. = 6,870 Lbs.

Note:
1. Mark this sheet with steel "B".
2. The lengths and quantities of longitudinal reinforcement and Class X Concrete in curb and parapets are not included in above quantities. See sheet #5.

SUPERSTRUCTURE
F.A.I. RT. 70 SEC. 12-54-HB-1
CLARK COUNTY
STA. 397+01.60

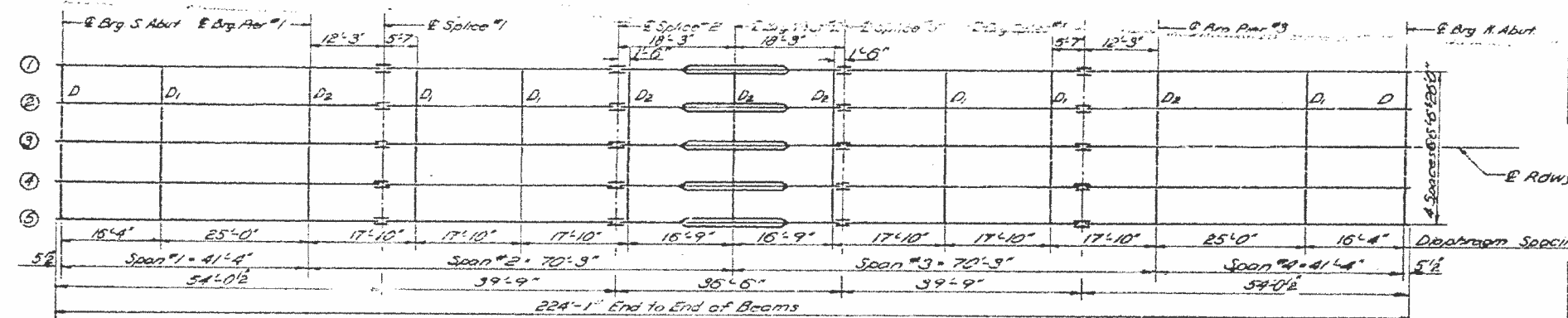
DESIGNED: *John P. Clark*
CHECKED: *Stanley S. Lee*
P.G. Barnett
BRUSH: *D.L. Bostrom*

SEPT 14 1965
DRAWN: *Carl E. Wernicke*
CHECKED: *H.J. Dicks*
APPROVED: *W.H. ...*

I-5-0 D-D-62 Rev. 11-1-63 5-1-64
Rev. 3-18-67 S.L. Slab thickness changed from 6" to 7" Class X Conc. changed from 173.8 Cu Yds. to 182.3 Cu Yds. and clear cover at top slab changed from 1 1/2" to 2"
Rev. 6-8-67 S.L. Curb changed, Class X Conc. changed from 150.3 Cu Yds. to 173.2 Cu Yds. Reinforcement Bars changed from 52100 Lbs. to 57970 Lbs. Structural Steel changed from 16440 to 16647 Lbs.

STATE OF ILLINOIS
DEPARTMENT OF PUBLIC WORKS & BUILDINGS
DIVISION OF HIGHWAYS

DATE	12-52	BY	CLARK	NO.	33	REV.	16
SCALE	AS SHOWN	PROJECT NO.		74777		SHEET NO.	



ELEVATION TOP OF W

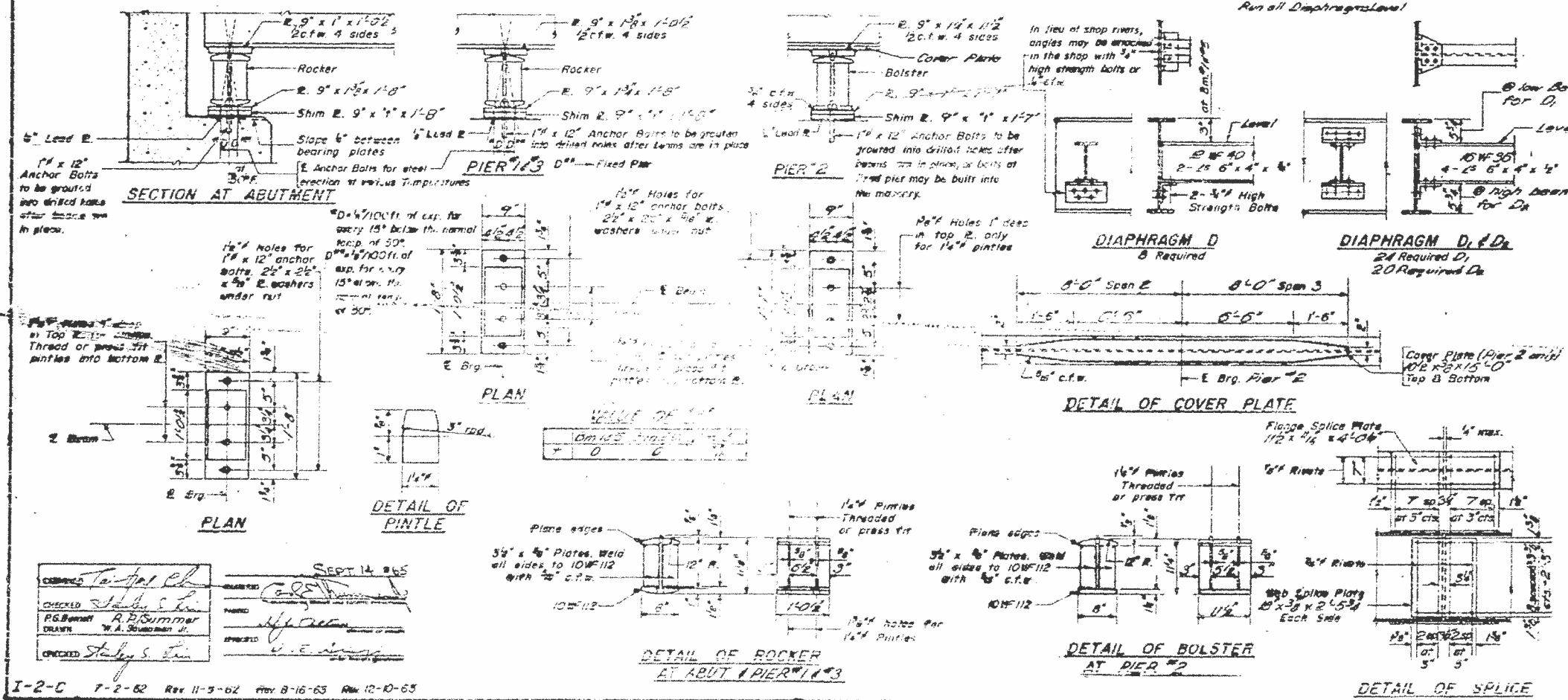
Station	Elevation	Station	Elevation
10+00	582.18	10+50	582.18
10+25	582.27	10+75	582.27
10+50	582.39	11+00	582.39
10+75	582.59	11+25	582.59
11+00	582.60	11+50	582.60
11+25	582.61	12+00	582.61
11+50	582.67	12+25	582.67
11+75	582.71	12+50	582.71
12+00	582.71	13+00	582.71
12+25	582.75	13+25	582.75
12+50	582.81	13+50	582.81
12+75	582.81	14+00	582.81

*All Elevations to be lowered 12"

TABLE OF MOMENTS & REACTIONS - INTERIOR BEAMS

	MOMENTS				REACTIONS		
	4 Sp. 118	3 Sp. 213	Pier 2	Pier 3	Abut. Pier 1	Pier 2	Pier 3
D.L.	72.1	284.5	184	4670	117	54.1	68.0
L.L.	173.9	2030	253	2678	236	31.1	33.0
Imp.	52.0	56.5	65	68.6	7.1	8.7	8.5
Total	298.0	544.0	502.0	803.4	42.4	93.9	109.5

Moments are in Ft.-Kips
Reactions are in Kips.



DESIGNED - [Signature]
CHECKED - [Signature]
DRAWN - [Signature]

STRUCTURAL STEEL
F.A.I. RT 10 SEC. 12-54-HB-1
CLARK COUNTY
STA. 397+01.60