

STATE OF ILLINOIS  
DEPARTMENT OF TRANSPORTATION  
DIVISION OF HIGHWAYS

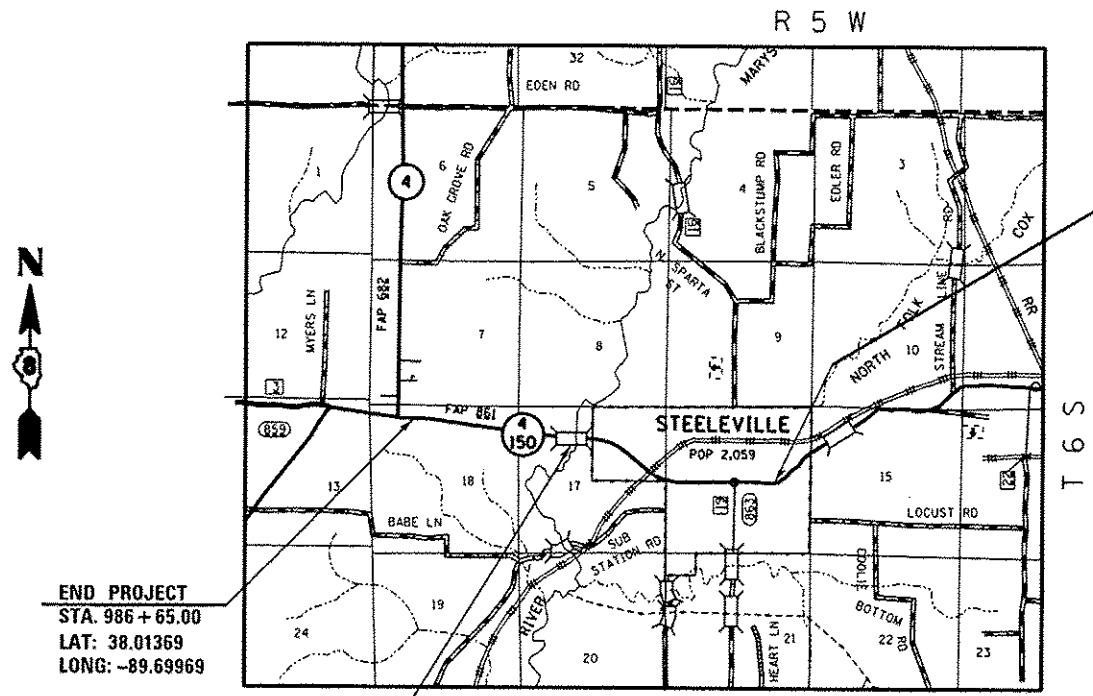
**PROPOSED  
HIGHWAY PLANS**

FAP ROUTE 861A (IL 4/L 150)  
SECTION 110-1RS-3  
PROJECT ACF-0861(023)  
RESURFACING  
RANDOLPH COUNTY

C-98-076-14

F.A.P. RTE.	SECTION	COUNTY	TOTAL SHEETS	SHEET NO.
861A	110-1RS-3	RANDOLPH	31	1
		ILLINOIS	CONTRACT NO. 76H47	

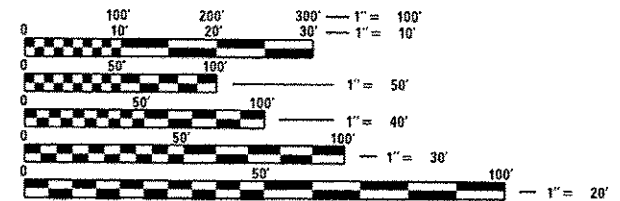
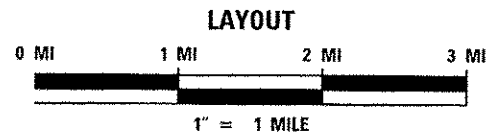
FOR INDEX OF SHEETS, SEE SHEET NO. 2



BEGIN PROJECT  
STA. 855 + 05.00  
LAT: 38.00704  
LONG: -89.65404

END PROJECT  
STA. 986 + 65.00  
LAT: 38.01369  
LONG: -89.69969

BRIDGE OMISSION  
(S.N. 079-0007)  
STA. 931 + 23 TO  
STA. 933 + 10



FULL SIZE PLANS HAVE BEEN PREPARED USING STANDARD ENGINEERING SCALES. REDUCED SIZED PLANS WILL NOT CONFORM TO STANDARD SCALES. IN MAKING MEASUREMENTS ON REDUCED PLANS, THE ABOVE SCALES MAY BE USED.

J.U.L.I.E.  
JOINT UTILITY LOCATION INFORMATION FOR EXCAVATION  
1-800-892-0123  
OR 811

PROJECT ENGINEER: HERVE GELIN (618) 346-3179  
SQUAD LEADER: CECIL DOWNING (618) 346-3186

CONTRACT NO. 76H47

GROSS LENGTH = 13,160 FT. = 2.49 MILE  
NET LENGTH = 12,973 FT. = 2.45 MILE

STATE OF ILLINOIS  
DEPARTMENT OF TRANSPORTATION

SUBMITTED Dec 9 2016  
Jeffrey Z. Kamars  
REGIONAL ENGINEER

Jan 27 2017  
Marcus M. Adis  
ENGINEER OF DESIGN AND ENVIRONMENT

Jan 27 2017  
Anneke A. [Signature]  
DIRECTOR OF PROGRAM DEVELOPMENT 2

PRINTED BY THE AUTHORITY  
OF THE STATE OF ILLINOIS

**INDEX OF SHEETS**

1. COVER SHEET
2. INDEX OF SHEETS, COMMITMENTS, HIGHWAY STANDARDS, & GENERAL NOTES
- 3.-6. SUMMARY OF QUANTITIES
7. LOCATION MAP
- 8.,9. TYPICAL SECTIONS
- 10.-13. SCHEDULES
- 14.,15. STAGE CONSTRUCTION SHEETS
16. PLAN SHEET - CONC. GUTTER, TYPE B (SPECIAL)
17. ADA RAMP DETAIL, JAMES ST.
18. ADA RAMP DETAIL, SPARTA ST.
- 19.-26. PLAT OF HIGHWAYS
- 27.-29. DETAILS
- 30.,31. CROSS SECTION SHEETS

**COMMITMENTS**

NONE

**HIGHWAY STANDARDS**

- 000001-06 STANDARD SYMBOLS, ABBREVIATIONS AND PATTERNS
- 001006 DECIMAL OF AN INCH AND OF A FOOT
- 406201-01 MAILBOX TURNOUT
- 606201-03 TYPE B GUTTER
- 701201-04 LANE CLOSURE, 2L, 2W, DAY ONLY, FOR SPEEDS ≥ 45 MPH
- 701301-04 LANE CLOSURE, 2L, 2W, SHORT TIME OPERATIONS
- 701306-03 LANE CLOSURE, 2L, 2W, SLOW MOVING OPERATIONS DAY ONLY, FOR SPEEDS ≥ 45 MPH
- 701311-03 LANE CLOSURE, 2L, 2W, SLOW MOVING OPERATIONS DAY ONLY
- 701326-04 LANE CLOSURE, 2L, 2W, PAVEMENT WIDENING, FOR SPEEDS ≥ 45 MPH
- 701336-06 LANE CLOSURE, 2L, 2W, SLOW MOVING OPERATIONS DAY ONLY, FOR SPEEDS ≥ 45 MPH
- 701501-06 URBAN LANE CLOSURE, 2L, 2W, UNDIVIDED
- 701801-06 SIDEWALK, CORNER, OR CROSSWALK CLOSURE
- 701901-06 TRAFFIC CONTROL DEVICES
- 720001-01 SIGN PANEL MOUNT DETAILS
- 720011-01 METAL POSTS FOR SIGNS, MARKERS & DELINEATORS
- 728001-01 TELESCOPING STEEL SIGN SUPPORT
- 780001-05 TYPICAL PAVEMENT MARKINGS
- 781001-04 TYPICAL APPLICATIONS RAISED REFLECTIVE PAVEMENT MARKERS

**GENERAL NOTES**

1. NO OVERNIGHT LANE CLOSURES SHALL BE ALLOWED ON THE PROJECT.
2. ONLY SHORT TERM PAVEMENT MARKING REMOVAL FROM THE FINAL SURFACE SHALL BE PAID FOR AS 'SHORT TERM PAVEMENT MARKING REMOVAL'.
3. THE THICKNESS OF THE HOT-MIX ASPHALT MIXTURE SHOWN ON THE PLANS IS THE NOMINAL THICKNESS. DEVIATIONS FROM THE NOMINAL THICKNESS WILL BE PERMITTED WHEN SUCH DEVIATIONS OCCUR DUE TO IRREGULARITIES IN THE EXISTING SURFACE OR BASE ON WHICH THE HOT-MIX ASPHALT MIXTURE IS PLACED.
4. THE PROPOSED PAVEMENT MARKING SHALL MATCH THE LOCATIONS OF THE EXISTING PAVEMENT MARKING, AS DIRECTED BY THE ENGINEER.
5. THE CONTRACTOR SHALL VERIFY ALL DIMENSIONS AND CONDITIONS IN THE FIELD PRIOR TO CONSTRUCTION AND ORDERING OF MATERIALS.
6. THE CONTRACTOR AND THE ENGINEER SHALL BE AWARE THAT LIMITED SURVEY WAS PERFORMED FOR THIS PROJECT. THE STATIONING, TOPOGRAPHY, AND QUANTITIES SHOWN IN THE PLANS WERE CREATED USING MICROFILM AND FIELD MEASUREMENTS. ALL SHALL BE ASSUMED TO BE APPROXIMATE. THE CONTRACTOR SHALL VERIFY DIMENSIONS AND CONDITIONS IN THE FIELD PRIOR TO CONSTRUCTION AND ORDERING OF MATERIALS.

7. ILLINOIS STATE LAW REQUIRES A 48-HOUR NOTICE BE GIVEN TO ALL UTILITIES WITHIN THE PROJECT AREA BEFORE DIGGING. FIELD MARKING OF FACILITIES MAY BE OBTAINED BY CONTACTING J.U.L.I.E. OR FOR NON-MEMBERS, THE UTILITY COMPANY DIRECTLY. AGENCIES KNOWN TO HAVE FACILITIES WITHIN THE PROJECT AREA ARE AS FOLLOWS:

UTILITY	ABOVE GROUND	BELOW GROUND
*AMEREN ILLINOIS	X	X
*CLEARWAVE COMMUNICATIONS		X
*EGYPTIAN TELEPHONE COOP. ASSN.	X	X
*EGYPTIAN WATER COMPANY		X
*EXXONMOBIL PIPELINE COMPANY		X
*FRONTIER NORTH, INC.	X	X
*NEW WAVE COMMUNICATIONS	X	X
*VILLAGE OF STEELEVILLE		X

MEMBERS OF J.U.L.I.E. CALL TOLL FREE (800) 892-0123 OR 811 AND ARE INDICATED BY \*. NON-J.U.L.I.E. MEMBERS MUST BE NOTIFIED INDIVIDUALLY.

8. THE INTENT OF THE MILLING IS TO REMOVE THE HMA RESURFACING AND PROVIDE A SCRATCH MILLING OF THE UNDERLYING P.C.C. CONCRETE TO THE SATISFACTION OF THE ENGINEER.
9. ALL AREAS DISTURBED FOR ANY REASON SHALL BE PERMANENTLY SEEDED AS DIRECTED BY THE ENGINEER. ALL AREAS DISTURBED BY THE CONTRACTOR OUTSIDE THE PROPOSED CONSTRUCTION LIMITS SHALL BE SEEDED AT THE CONTRACTOR'S EXPENSE.
10. THE USE OF VIBRATORY ROLLERS WILL NOT BE PERMITTED WITHIN THE CITY LIMITS OF STEELEVILLE. THIS DOES NOT RELIEVE THE CONTRACTOR OF DENSITY REQUIREMENTS FOR THE CONSTRUCTION OF THE BITUMINOUS PAVEMENTS AS SPECIFIED IN SECTIONS 406 & 407 OF THE STANDARD SPECIFICATIONS, AND AS SPECIFIED IN THE QCP SPECIAL PROVISION.
11. THE CONTRACTOR SHALL PROVIDE POSITIVE AND ADEQUATE DRAINAGE AT ALL TIMES.
12. THE CONTRACTOR SHALL BE AWARE THAT THERE ARE MANHOLES & VALVES LOCATED WITHIN THE RESURFACING LIMITS. CARE SHALL BE TAKEN IN THESE LOCATIONS DURING MILLING OPERATIONS.
13. THE FOLLOWING MIXTURE REQUIREMENTS ARE APPLICABLE FOR THIS PROJECT:

MIXTURE USE	POLY SURFACE	POLY BINDER	PATCHING
AC/PG	SBS PG 76-22	SBS PG 70-22	PG 64-22
RAP % (MAX)	SEE SPEC. PROV.	SEE SPEC. PROV.	SEE SPEC. PROV.
DESIGN AIR VOIDS	4.0% @ Ndes=90	4.0% @ Ndes=90	4.0% @ Ndes=90
MIX COMPOSITION (GRADATION MIXTURE)	IL 9.5	IL 19.0	IL 19.0
FRICTION AGG	MIXTURE "E"	MIXTURE "B"	MIXTURE "B"
QUALITY MGMT PROGRAM	QCP	QCP	QC/QA

PLAN QUANTITIES FOR HOT-MIX ASPHALT SURFACE COURSE ITEMS ARE CALCULATED USING A UNIT WEIGHT OF 112 LB/SQ YD/IN.

14. CONCRETE PATCHES EXIST WITHIN THE LIMITS OF THE RESURFACING. THE COST OF MILLING THE CONCRETE PATCHES WILL BE INCLUDED IN THE PAY ITEM FOR "HOT-MIX ASPHALT SURFACE REMOVAL" OF THE SPECIFIED DEPTH.
15. THE CONTRACTOR SHALL BE AWARE THAT, AFTER MILLING OPERATIONS, THE CONDITION OF THE UNDERLYING CONCRETE PAVEMENT MAY NECESSITATE INCREASED PATCHING QUANTITIES.
16. EXCAVATION ADJACENT TO THE EDGE OF PAVEMENT SHALL BE PROTECTED WITH EXTENDED LEG BARRICADES WITH STEADY BURN LIGHTS.
17. A NOTCHED WEDGE LONGITUDINAL JOINT SHALL BE USED BETWEEN SUCCESSIVE PASSES OF HMA SURFACE COURSE THAT HAS A DIFFERENCE IN ELEVATION OF GREATER THAN 2 IN. BETWEEN LANES ON PAVEMENT THAT IS OPEN TO TRAFFIC. THE LONGITUDINAL JOINT SHALL BE CONSTRUCTED ACCORDING TOE ARTICLE 406.06 OF THE STANDARD SPECIFICATIONS FOR ROAD AND BRIDGE CONSTRUCTION.

# SUMMARY OF QUANTITIES

CODE NO.	ITEM	UNIT	TOTAL QUANTITY	CONSTRUCTION CODE		
				80% FED 20% STATE ROADWAY	50% STATE 50% CITY PARK. LANES	80% FED 20% STATE ADA RAMPS
				0005	0005	0021
20200100	EARTH EXCAVATION	CU YD	43	43		
25000210	SEEDING, CLASS 2A	ACRE	0.25	0.25		
25000400	NITROGEN FERTILIZER NUTRIENT	POUND	5	5		
25000500	PHOSPHORUS FERTILIZER NUTRIENT	POUND	5	5		
25000600	POTASSIUM FERTILIZER NUTRIENT	POUND	5	5		
25100115	MULCH, METHOD 2	ACRE	0.25	0.25		
28000250	TEMPORARY EROSION CONTROL SEEDING	POUND	13	13		
31101900	SUBBASE GRANULAR MATERIAL, TYPE C	TON	35	35		
35400400	PORTLAND CEMENT CONCRETE BASE COURSE WIDENING 9"	SQ YD	124	124		
40600295	POLYMERIZED BITUMINOUS MATERIALS (TACK COAT)	POUND	26297	26125	172	
40600990	TEMPORARY RAMP	SQ YD	649	649		
40603240	POLYMERIZED HOT-MIX ASPHALT BINDER COURSE, IL-19.0, N90	TON	4592	4592		
40603570	POLYMERIZED HOT-MIX ASPHALT SURFACE COURSE, MIX "E", N90	TON	3818	3524	294	
42400100	PORTLAND CEMENT CONCRETE SIDEWALK 4 INCH	SQ FT	628			628

14

FILE NAME * p:\11884EB10\INTEG\Illinois.gov\PI\DOT\Documents\DOT Office\District 8\Projects\DR77\DRAWING\800sheets\87647-ehf-plans	USER NAME * DorteimanJN DESIGNED - CHECKED - DATE -	REVISED - REVISED - REVISED -	<b>STATE OF ILLINOIS DEPARTMENT OF TRANSPORTATION</b>	<b>SUMMARY OF QUANTITIES</b>	F.A.P. RTE. 861A	SECTION 110-IRS-3	COUNTY RANDOLPH	TOTAL SHEETS 31	SHEET NO. 3
SCALE: _____ SHEET _____ OF _____ SHEETS STA. _____ TO STA. _____				ILLINOIS FED. AID PROJECT <b>CONTRACT NO. 76H47</b>					

# SUMMARY OF QUANTITIES

CODE NO.	ITEM	UNIT	TOTAL QUANTITY	CONSTRUCTION CODE		
				80% FED 20% STATE ROADWAY	50% STATE 50% CITY PARK. LANES	80% FED 20% STATE ADA RAMPS
				0005	0005	0021
42400800	DETECTABLE WARNINGS	SQ FT	42.5			42.5
44000156	HOT-MIX ASPHALT SURFACE REMOVAL, 1 3/4"	SQ YD	34758	31329	3429	
44000158	HOT-MIX ASPHALT SURFACE REMOVAL, 2 1/4"	SQ YD	31329	31329		
44000300	CURB REMOVAL	FOOT	89			89
44000500	COMBINATION CURB AND GUTTER REMOVAL	FOOT	445	445		
44000600	SIDEWALK REMOVAL	SQ FT	617			617
44201389	CLASS C PATCHES, TYPE II, 13 INCH	SQ YD	371	371		
44201394	CLASS C PATCHES, TYPE III, 13 INCH	SQ YD	492	492		
44201396	CLASS C PATCHES, TYPE IV, 13 INCH	SQ YD	567	567		
44213204	TIE BARS 3/4"	EACH	223	223		
44300200	STRIP REFLECTIVE CRACK CONTROL TREATMENT	FOOT	26125	26125		
48102100	AGGREGATE WEDGE SHOULDER, TYPE B	TON	1821	1821		
60255500	MANHOLES TO BE ADJUSTED	EACH	1			1
60260100	INLETS TO BE ADJUSTED	EACH	7	7		

14

FILE NAME *	USER NAME * DintelmanJN	DESIGNED -	REVISED -	<b>STATE OF ILLINOIS DEPARTMENT OF TRANSPORTATION</b>	<b>SUMMARY OF QUANTITIES</b>	F.A.P. RTE.	SECTION	COUNTY	TOTAL SHEETS	SHEET NO.
pm\IL084EBID\INTEG.illinois.gov\FWIDOT\Documents\DOT Offices\District B\Projects\087		FOR DATA\CR084ebid\087647-eh-plant	REVISED -			861A	110-IRS-3	RANDOLPH	31	4
PLOT SCALE = 1/8" = 1' / in.	CHECKED -	REVISED -	REVISED -							
PLOT DATE = 12/9/2016	DATE -	REVISED -	REVISED -							
						SCALE: _____ SHEET _____ OF _____ SHEETS		STA. _____ TO STA. _____		CONTRACT NO. 76H47
						ILLINOIS FED. AID PROJECT				

# SUMMARY OF QUANTITIES

CODE NO.	ITEM	UNIT	TOTAL QUANTITY	CONSTRUCTION CODE		
				80% FED 20% STATE ROADWAY 0005	50% STATE 50% CITY PARK. LANES 0005	80% FED 20% STATE ADA RAMPS 0021
60600095	CLASS SI CONCRETE (OUTLET)	CU YD	3	3		
60605000	COMBINATION CONCRETE CURB AND GUTTER, TYPE B-6.24	FOOT	89	0	89	
67000400	ENGINEER'S FIELD OFFICE, TYPE A	CAL MO	9	9		
67100100	MOBILIZATION	LSUM	1	1		
70100450	TRAFFIC CONTROL AND PROTECTION, STANDARD 701201	LSUM	1	1		
70100460	TRAFFIC CONTROL AND PROTECTION, STANDARD 701306	LSUM	1	1		
70100600	TRAFFIC CONTROL AND PROTECTION, STANDARD 701336	LSUM	1	1		
70102620	TRAFFIC CONTROL AND PROTECTION, STANDARD 701501	LSUM	1	1		
70102642	TRAFFIC CONTROL AND PROTECTION, STANDARD 701801	EACH	2		2	
70103815	TRAFFIC CONTROL SURVEILLANCE	CAL DA	5	5		
70300100	SHORT TERM PAVEMENT MARKING	FOOT	2644	2644		
70300150	SHORT TERM PAVEMENT MARKING REMOVAL	SQ FT	881	881		
70300210	TEMPORARY PAVEMENT MARKING LETTERS AND SYMBOLS	SQ FT	125	125		
70300220	TEMPORARY PAVEMENT MARKING - LINE 4"	FOOT	39481	39481		

14

FILE NAME *	USER NAME * DintamanJN	DESIGNED -	REVISED -	<b>STATE OF ILLINOIS DEPARTMENT OF TRANSPORTATION</b>	<b>SUMMARY OF QUANTITIES</b>	F.A.P. RTE. 861A	SECTION 110-IRS-3	COUNTY RANDOLPH	TOTAL SHEETS 31	SHEET NO. 5
PLOT SCALE = 1/8" = 1' / IN. PLOT DATE = 12/19/2016						SCALE: _____ SHEET _____ OF _____ SHEETS STA. _____ TO STA. _____		CONTRACT NO. 76H47 <small>ILLINOIS FED. AID PROJECT</small>		

# SUMMARY OF QUANTITIES

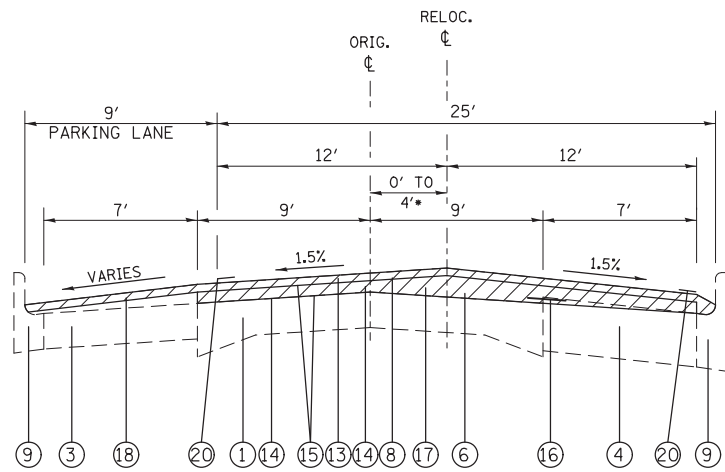
CODE NO.	ITEM	UNIT	TOTAL QUANTITY	CONSTRUCTION CODE		
				80% FED 20% STATE ROADWAY	50% STATE 50% CITY PARK. LANES	80% FED 20% STATE ADA RAMPS
				0005	0005	0021
70300260	TEMPORARY PAVEMENT MARKING - LINE 12"	FOOT	128	128		
70300280	TEMPORARY PAVEMENT MARKING - LINE 24"	FOOT	128	128		
* 72000100	SIGN PANEL - TYPE 1	SQ FT	17.25	17.25		
* 72400310	REMOVE SIGN PANEL - TYPE 1	SQ FT	17.25	17.25		
* 72800100	TELESCOPING STEEL SIGN SUPPORT	FOOT	31	31		
* 78000100	THERMOPLASTIC PAVEMENT MARKING - LETTERS AND SYMBOLS	SQ FT	125	125		
* 78000200	THERMOPLASTIC PAVEMENT MARKING - LINE 4"	FOOT	39481	39481		
* 78000600	THERMOPLASTIC PAVEMENT MARKING - LINE 12"	FOOT	128	128		
* 78000650	THERMOPLASTIC PAVEMENT MARKING - LINE 24"	FOOT	128	128		
* 78100100	RAISED REFLECTIVE PAVEMENT MARKER	EACH	165	165		
78300200	RAISED REFLECTIVE PAVEMENT MARKER REMOVAL	EACH	165	165		
X6063000	CONCRETE GUTTER, TYPE B (SPECIAL)	FOOT	445	445		
Z0034105	MATERIAL TRANSFER DEVICE	TON	8410	8410		
∅ Z0076600	TRAINEES	HOOR	1000	1000		
Z0048665	RAILROAD PROTECTIVE LIABILITY INSURANCE	LSUM	1	1		
∅ Z0076604	TRAINEES TRAINING PROGRAM GRADUATE	HOOR	1000	1000		

∅ 0042  
\* SPECIALTY ITEM

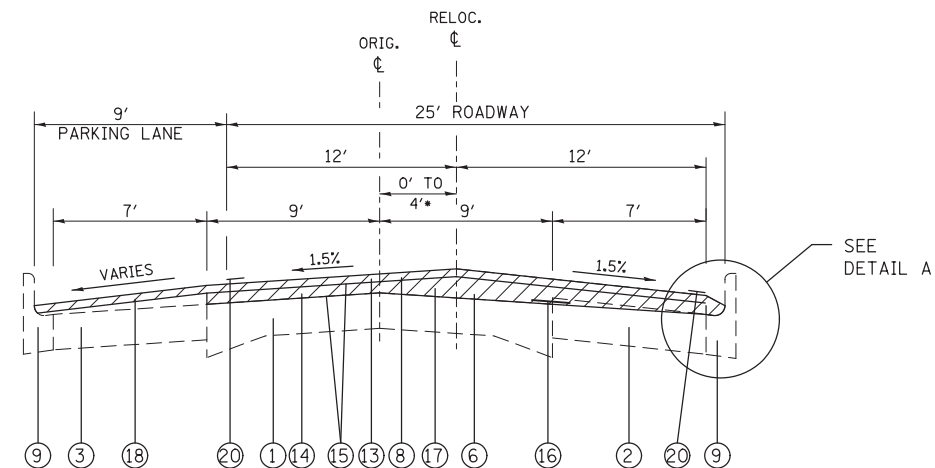
FILE NAME *	USER NAME * DintelmanJH	DESIGNED -	REVISED -	<b>STATE OF ILLINOIS DEPARTMENT OF TRANSPORTATION</b>	<b>SUMMARY OF QUANTITIES</b>	F.A.P. RTE.	SECTION	COUNTY	TOTAL SHEETS	SHEET NO.
pw:\11084EBIDINTEG.illinois.gov\PI007\Documents\IDOT Office\District 8\Projects\0870\BID\BIDData\BIDSheet\0870h47-ht-plain	DESIGNED -	REVISED -	861A			110-1RS-3	RANDOLPH	31	6	
PLOT SCALE = 1/8" = 1' in.	CHECKED -	REVISED -	CONTRACT NO. 76H47							
PLOT DATE = 12/9/2016	DATE -	REVISED -	ILLINOIS FED. AID PROJECT							

19

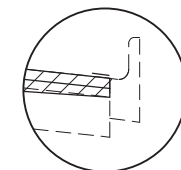




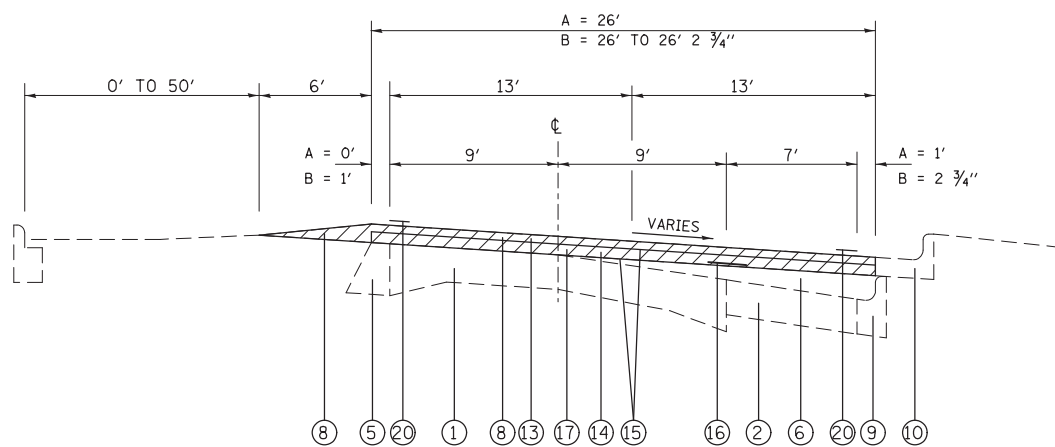
**TYPICAL SECTION**  
STA. 855+05 TO STA. 859+13



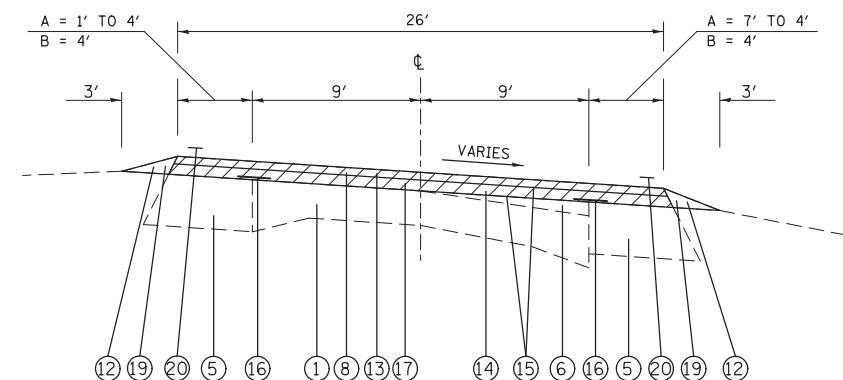
**TYPICAL SECTION**  
STA. 859+13 TO STA. 889+34



**DETAIL A**  
STA. 867+26 TO STA. 872+39 RT



**TYPICAL SECTION**  
STA. 889+34 TO STA. 892+09 = A  
STA. 892+09 TO STA. 892+59 = B



**TYPICAL SECTION**  
STA. 892+59 TO STA. 894+69 = A  
STA. 894+69 TO STA. 898+85 = B

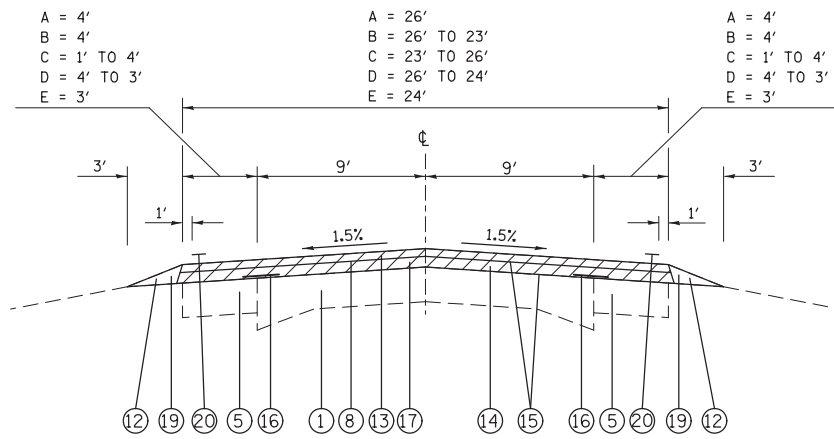
**LEGEND**

- ① EXISTING 9-6-9 CONCRETE PAVEMENT
- ② EXISTING P.C.C. PAVEMENT - 6"
- ③ EXISTING STABILIZED BASE COURSE - 6"
- ④ EXISTING STABILIZED BASE COURSE - 9"
- ⑤ EXISTING BASE COURSE WIDENING - 8" TO 9"
- ⑥ EXISTING LEVELING BINDER - VARIABLE DEPTH
- ⑦ EXISTING CONCRETE GUTTER
- ⑧ EXISTING BITUMINOUS RESURFACING - ± 4"
- ⑨ EXISTING COMBINATION CONCRETE CURB & GUTTER, TYPE B-6.12
- ⑩ EXISTING COMBINATION CONCRETE CURB & GUTTER, TYPE B-6.24
- ⑪ EXISTING GUTTER TO BE REMOVED
- ⑫ EXISTING AGGREGATE SHOULDER

- ⑬ PROPOSED HMA SURFACE REMOVAL, 1 3/4"
- ⑭ PROPOSED HMA SURFACE REMOVAL, 2 1/4"
- ⑮ PROPOSED BITUMINOUS MATERIALS (TACK COAT)
- ⑯ PROPOSED STRIP REFLECTIVE CRACK CONTROL
- ⑰ PROPOSED BINDER COURSE, 2.25"
- ⑱ PROPOSED HMA SURFACE COURSE, 1.75"
- ⑲ PROPOSED AGGREGATE SHOULDERS, TYPE B
- ⑳ PROPOSED THERMOPLASTIC PAVEMENT MARKING LINE
- ㉑ PROPOSED PCC BASE COURSE WIDENING, 9"
- ㉒ PROPOSED GUTTER, TYPE B
- ㉓ PROPOSED SUBBASE GRANULAR MATERIAL, TYPE C, 4"
- ㉔ PROPOSED TIE BARS

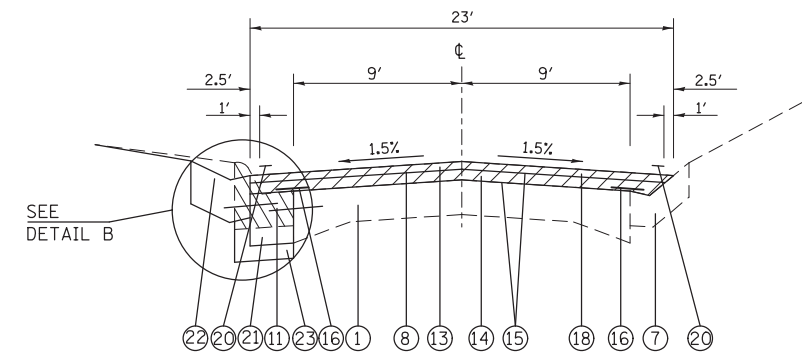
FILE NAME -	USER NAME = DintelmanJN	DESIGNED -	REVISED -	<b>STATE OF ILLINOIS DEPARTMENT OF TRANSPORTATION</b>	<b>TYPICAL SECTIONS</b>	F.A.P. RTE.	SECTION	COUNTY	TOTAL SHEETS	SHEET NO.
pw:\IL084EBIDINTEG\illinois.gov\PIWIDOT\Documents\IDOT Offices\District 8\Projects\D875\DRWING\DATA\EA0\Sheets\d876h47-sht\plan.dwg		CHECKED -	REVISED -			861A	110-IRS-3	RANDOLPH	31	8
		DATE -	REVISED -			CONTRACT NO. 76H47				
						FED. ROAD DIST. NO.	ILLINOIS	FED. AID PROJECT		
				SCALE:	SHEET NO. 1 OF 2 SHEETS	STA. 855+05 TO STA. 898+85				





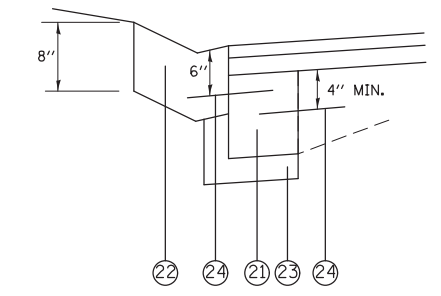
**TYPICAL SECTION**

STA. 898+85 TO STA. 900+62 = A  
 STA. 900+62 TO STA. 901+30 = B  
 STA. 901+40 TO STA. 902+15 = C  
 STA. 902+15 TO STA. 903+94 = A  
 STA. 920+97 TO STA. 922+92 = A  
 STA. 926+61 TO STA. 927+67 = D  
 STA. 927+67 TO STA. 931+23 = E  
 STA. 933+10 TO STA. 946+26 = E  
 STA. 962+01 TO STA. 986+65 = E

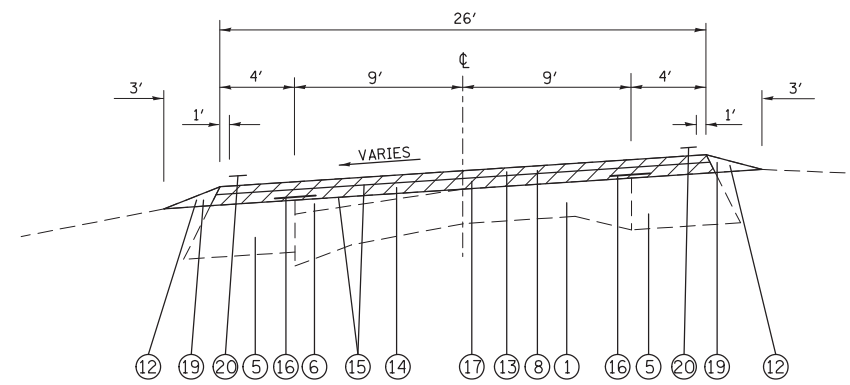


**TYPICAL SECTION**

STA. 922+92 TO STA. 926+61

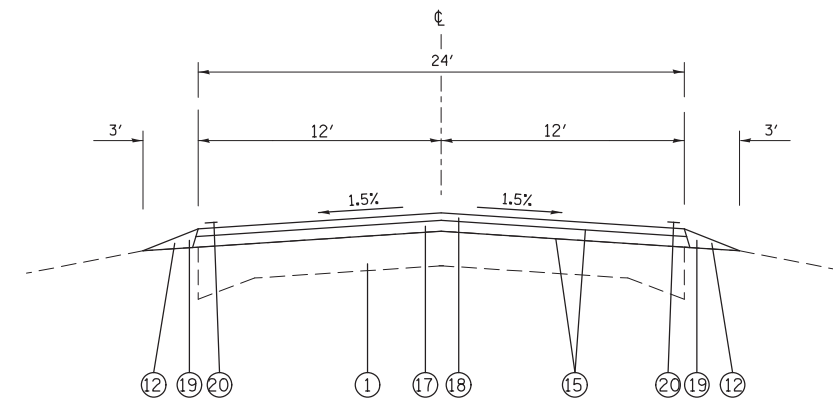


**DETAIL B**



**TYPICAL SECTION**

STA. 903+94 TO STA. 920+97



**TYPICAL SECTION**

STA. 946+26 TO STA. 962+01

**LEGEND**

- ① EXISTING 9-6-9 CONCRETE PAVEMENT
- ② EXISTING P.C.C. PAVEMENT - 6"
- ③ EXISTING STABILIZED BASE COURSE - 6"
- ④ EXISTING STABILIZED BASE COURSE - 9"
- ⑤ EXISTING BASE COURSE WIDENING - 8" TO 9"
- ⑥ EXISTING LEVELING BINDER - VARIABLE DEPTH
- ⑦ EXISTING CONCRETE GUTTER
- ⑧ EXISTING BITUMINOUS RESURFACING - ± 4"
- ⑨ EXISTING COMBINATION CONCRETE CURB & GUTTER, TYPE B-6.12
- ⑩ EXISTING COMBINATION CONCRETE CURB & GUTTER, TYPE B-6.24
- ⑪ EXISTING GUTTER TO BE REMOVED
- ⑫ EXISTING AGGREGATE SHOULDER
- ⑬ PROPOSED HMA SURFACE REMOVAL, 1 3/4"
- ⑭ PROPOSED HMA SURFACE REMOVAL, 2 1/4"
- ⑮ PROPOSED BITUMINOUS MATERIALS (TACK COAT)
- ⑯ PROPOSED STRIP REFLECTIVE CRACK CONTROL
- ⑰ PROPOSED BINDER COURSE, 2.25"
- ⑱ PROPOSED HMA SURFACE COURSE, 1.75"
- ⑲ PROPOSED AGGREGATE SHOULDERS, TYPE B
- ⑳ PROPOSED THERMOPLASTIC PAVEMENT MARKING LINE
- ㉑ PROPOSED PCC BASE COURSE WIDENING, 9"
- ㉒ PROPOSED GUTTER, TYPE B
- ㉓ PROPOSED SUBBASE GRANULAR MATERIAL, TYPE C, 4"
- ㉔ PROPOSED TIE BARS

FILE NAME =	USER NAME = DintelmanJN	DESIGNED -	REVISED -	<b>STATE OF ILLINOIS DEPARTMENT OF TRANSPORTATION</b>	<b>TYPICAL SECTIONS</b>			F.A.P. RTE.	SECTION	COUNTY	TOTAL SHEETS	SHEET NO.
px:\IL\084EBIDINTEG\illinois.gov\PIWIDOT\Documents\IDOT Offices\District 8\Projects\0876\DRWING\DATA\6A\Sheets\d876h47-sht-plan.dwg		CHECKED -	REVISED -		SCALE:	SHEET NO. 2 OF 2 SHEETS	STA. 898+85 TO STA. 986+65	861A	110-1RS-3	RANDOLPH	31	9
		DATE -	REVISED -					CONTRACT NO. 76H47				
								FED. ROAD DIST. NO. ILLINOIS FED. AID PROJECT				

RESURFACING SCHEDULE									
LOCATION			HMA SURFACE REMOVAL, 1.75"	HMA SURFACE REMOVAL, 2.25"	POLYMERIZED BIT. MAT'L (TACK COAT)	POLYMERIZED HMA BINDER COARSE	POLYMERIZED HMA SURFACE COURSE	STRIP REFLECTIVE CRACK CONTROL TREATMENT	AGGREGATE WEDGE SHOULDERS, TYPE B
			(SQ YD)	(SQ YD)	(POUND)	(TON)	(TON)	(FOOT)	(TON)
STA.	TO	STA.							
855+05.00	TO	859+13.00	1496.00	1088.00	1009.80	150.80	146.61	816.00	
859+13.00	TO	889+34.00	11077.00	8056.00	7476.98	1116.56	1085.55	6042.00	
889+34.00	TO	892+09.00	794.44	794.44	536.25	100.10	77.86	550.00	
892+09.00	TO	892+59.00	145.08	145.08	97.93	18.28	14.22	100.00	8.75
892+59.00	TO	898+85.00	1808.44	1808.44	1220.70	227.86	177.23	1252.00	109.54
898+85.00	TO	901+30.00	666.94	666.94	450.19	84.04	65.36	490.00	42.87
901+30.00	TO	902+15.00	204.17	204.17	137.81	25.73	20.01	150.00	13.12
902+15.00	TO	903+94.00	517.11	517.11	349.05	65.16	50.68	358.00	31.32
903+94.00	TO	920+97.00	4919.78	4919.78	3320.85	619.89	482.14	3406.00	298.01
920+97.00	TO	922+92.00	563.33	563.33	380.25	70.98	55.21	390.00	34.12
922+92.00	TO	926+61.00	943.00	943.00	636.53	118.82	92.41	738.00	64.57
926+61.00	TO	927+67.00	288.56	288.56	194.78	36.36	28.28	212.00	18.55
927+67.00	TO	931+23.00	988.89	988.89	667.50	124.60	96.91	712.00	62.30
931+23.00	TO	932+22.62	265.65	265.65	179.32	33.47	26.03	199.24	17.43
933+10.00	TO	946+26.00	3509.33	3509.33	2368.80	442.18	343.91	2632.00	230.29
946+26.00	TO	962+01.00			2835.00	529.20	411.60	3150.00	459.35
962+01.00	TO	986+65.00	6570.67	6570.67	4435.20	827.90	643.93	4928.00	431.18
<b>TOTAL</b>			<b>34758</b>	<b>31329</b>	<b>26297</b>	<b>4592</b>	<b>3818</b>	<b>26125</b>	<b>1821</b>

EROSION CONTROL SCHEDULE								
LOCATION			TEMP. EROSION CONTROL SEEDING	SEEDING CL 2A	NITROGEN FERTILIZER NUTRIENT	PHOSPHORUS FERTILIZER NUTRIENT	POTASSIUM FERTILIZER NUTRIENT	MULCH METHOD 2
STA	to	STA	(lb)	(ac)	(lb)	(lb)	(lb)	(ac)
923+00	to	923+50						
923+50	to	924+00	1.5	0.01	0.4	0.4	0.4	0.01
924+00	to	924+50	2.1	0.01	0.6	0.6	0.6	0.01
924+50	to	925+00	3.9	0.02	1.1	1.1	1.1	0.02
925+00	to	925+50	2.1	0.01	0.6	0.6	0.6	0.01
925+50	to	926+00	1.5	0.01	0.4	0.4	0.4	0.01
926+00	to	926+50	1.8	0.01	0.5	0.5	0.5	0.01
			0.0	0.00	0.0	0.0	0.0	0
					3.2			
<b>TOTAL =</b>			<b>13</b>	<b>0.25</b>	<b>5</b>	<b>5</b>	<b>5</b>	<b>0.25</b>

TEMPORARY RAMP SCHEDULE						
LOCATION	LT/RT	TEMP RAMP			TEMPORARY RAMP	COMMENTS
		LENGTH	WIDTH	AREA SQ YD		
<b>STA.</b>						
<b>MAINLINE</b>						
854+62		5	24	13.33	13.33	BEG. PROJ.
902+39		5	24	13.33	13.33	RR OMMISION
904+94		5	24	13.33	13.33	RR OMMISION
932+23		5	24	13.33	13.33	BRIDGE OMMISION
934+10		5	24	13.33	13.33	BRIDGE OMMISION
986+67		5	24	13.33	13.33	END PROJ.
<b>SIDE ROADS</b>						
856+20	LT/RT	35	3	11.67	11.67	CENTER ST.
858+90	RT	30	3	10.00	10.00	CHERRY ST.
861+74	RT	35	3	11.67	11.67	MULBERRY ST.
867+26	LT/RT	45	3	15.00	15.00	SPARTA ST.
872+39	RT	40	3	13.33	13.33	SENECA ST.
876+26	LT/RT	40	3	13.33	13.33	CHARLES ST.
880+44	LT/RT	40	3	13.33	13.33	JAMES ST.
884+61	LT/RT	40	3	13.33	13.33	GARFIELD ST.
889+53	LT/RT	40	3	13.33	13.33	CHESTER ST.
894+09	RT	50	3	16.67	16.67	LINE ST.
905+07	RT	65	3	21.67	21.67	HOLT DR.
907+91	LT	50	3	16.67	16.67	ERIN DR.
916+95	LT	40	3	13.33	13.33	WESTWOOD DR.
918+80	RT	100	3	33.33	33.33	SHAWNEETOWN TRAIL
919+45	RT	35	3	11.67	11.67	BAPTIST LANE
922+46	LT	50	3	16.67	16.67	VICTORIA DR.
938+84	RT	50	3	16.67	16.67	WEAVER LN.
<b>ENTRANCES</b>						
865+46	LT	20	3	6.67	6.67	HUCKS
866+96	LT	30	3	10.00	10.00	HUCKS
867+79	LT	12	3	4.00	4.00	DAIRTY QUEEN
868+66	LT	25	3	8.33	8.33	DAIRTY QUEEN
869+34	LT	20	3	6.67	6.67	CASEYS
869+81	RT	25	3	8.33	8.33	EAGLES
870+54	LT	35	3	11.67	11.67	CASEYS
872+19	LT	20	3	6.67	6.67	DAVE'S FOOD CENT.
872+47	LT	20	3	6.67	6.67	DAVE'S FOOD CENT.
876+76	RT	20	3	6.67	6.67	POST OFFICE
877+31	RT	20	3	6.67	6.67	POST OFFICE
878+70	RT	35	3	11.67	11.67	
879+16	RT	30	3	10.00	10.00	
877+36	LT	20	3	6.67	6.67	1ST. NATIONAL BANK
878+98	LT	20	3	6.67	6.67	1ST. NATIONAL BANK
879+54	LT	20	3	6.67	6.67	FSB BANK
879+54	RT	20	3	6.67	6.67	DORMA
898+70	LT	40	3	13.33	13.33	EGYPTIAN
900+10	LT	30	3	10.00	10.00	EGYPTIAN
900+95	RT	35	3	11.67	11.67	DORMA
901+80	RT	40	3	13.33	13.33	EGYPTIAN ELEC.
916+45	RT	30	3	10.00	10.00	
955+55	RT	30	3	10.00	10.00	W.M. NOBBE
957+40	LT	30	3	10.00	10.00	UNITED IRONWORKERS
957+70	RT	40	3	13.33	13.33	W.M. NOBBE
958+85	LT	25	3	8.33	8.33	UNITED IRONWORKERS
96200	RT	30	3	10.00	10.00	FISH HOUSE
<b>TOTAL</b>					<b>649</b>	

LOCATION			THERMOPLASTIC PAVEMENT MARKING					LETTERS & SYMBOLS	RAISED RELFLECTIVE PAVEMENT MARKER REMOVAL	RAISED RELFLECTIVE PAVEMENT MARKERS	SHORT TERM PAVEMENT MARKING	SHORT TERM PAVEMENT MARKING REMOVAL
			4"		12"	24"	SQ FT					
			SOLID WHITE EDGE LINE	SKIP-DASH YELLOW CENTERLINE	SOLID YELLOW LINE	CROSSWALK						
STA.	TO	STA.	FOOT	FOOT	FOOT	FOOT		EACH	EACH	FOOT	SQ FT	
854+62	TO	860+62	1087	150	600			8	8	120	40	
860+62	TO	866+47	1127	146	585	128		7	7	118	39	
866+47	TO	884+42	3135	449				22	22	360	120	
884+42	TO	890+69	1139	157	627			8	8	126	42	
890+69	TO	921+69	5780		6200	128	125	39	39	620	207	
921+69	TO	932+79	2220	278	1110			14	14	222	74	
932+79	TO	945+49	2540	318				16	16	254	85	
945+49	TO	956+79	2260	283	1130			14	14	226	75	
956+79	TO	959+47	536		536			3	3	54	18	
959+47	TO	969+17	1940	243	970			12	12	194	65	
969+17	TO	986+67	3500	438				22	22	350	117	
SUB-TOTAL			25264	2459.25	11758	128	128	125	165	165	2644	881
TOTAL			39481			128	128	125	165	165	2644	881

NOTE: A QUANTITY FOR TEMPORARY PAVEMENT MARKING EQUAL TO THE AMOUNT OF PERMANENT PAVEMENT MARKING HAS BEEN ADDED TO THE PLANS.

INLET SCHEDULE			
LOCATION	SIDE	INLETS TO BE ADJUSTED	COMMENTS
STA.	LT/RT	(EACH)	
872+22	RT	1	SENECA ST.
876+57	LT/RT	2	CHARLES ST.
880+72	RT	1	JAMES ST.
884+88	LT/RT	2	GARFIELD ST.
889+86	LT	1	CHERRY ST.
TOTAL		7	

SIGN PANEL SCHEDULE					
LOCATION	LT/RT	REMOVE SIGN PANEL -TYPE 1	SIGN PANEL -TYPE 1	TELESCOPING STEEL SIGN SUPPORT	COMMENTS
STATION		SQ FT	SQ FT	FOOT	
880+12	RT	8.25	6.25	16	S1-1 (30" X 30")
880+12	RT		2		W16-7P (L) (24" X 12")
899+56	RT	9			
899+90	RT		9	15	W10-1 (36" X 36")
TOTAL		17.25	17.25	31	

EARTHWORK SCHEDULE						
STA	TO	STA	UNADJUSTED EXCAVATION	EARTH EXCAVATION ADJUSED FOR 25% SHRINKAGE	FURNISHED EXCAVATION	EARTHWORK BALANCE WASTE (+) OR SHORTAGE (-)
			(CU YD)	(CU YD)	(CU YD)	(CU YD)
923+00.00	TO	923+50.00	4.3	3.2	0.0	3.2
923+50.00	TO	924+00.00	5.1	3.8	0.0	3.8
924+00.00	TO	924+50.00	5.6	4.2	0.0	4.2
924+50.00	TO	925+00.00	15.8	11.9	0.0	11.9
925+00.00	TO	925+50.00	7.4	5.6	0.0	5.6
925+50.00	TO	926+00.00	4.5	3.4	0.0	3.4
SUB-TOTAL =			42.7	32.1	0.0	32.1
TOTAL =			43	32	0	32

WIDENING & GUTTER SCHEDULE								
LOCATION			COMBINATION CURB & GUTTER REMOVAL	SUBBASE GRANULAR MATERIAL, TYPE C	PCC BASE COURSE WIDENING, 9"	TIE BARS 3/4"	CONCRETE GUTTER TYPE B (SPECIAL)	CLASS SI CONCRETE (OUTLET)
STA.	TO	STA.	(FOOT)	(TON)	(SQ YD)	(EACH)	(FOOT)	(CU YD)
922+22	TO	926+67	445	34.61	123.61	223	445.00	3.00
TOTAL			445	35	124	223	445	3

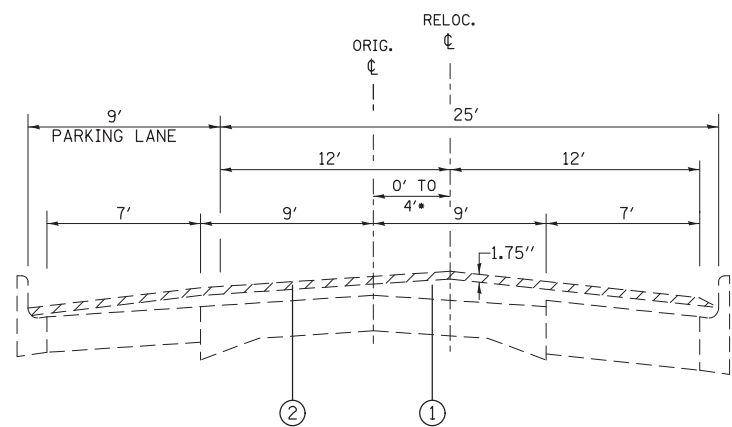
LOCATION (EASTBOUND)	LENGTH	WIDTH	CLASS C PATCHES, 13"		
			TYPE 2	TYPE 3	TYPE 4
MILE PT.	(FEET)	(FEET)	(SQ YDS)	(SQ YDS)	(SQ YDS)
2.49	6	12	8		
2.48	6	12	8		
2.47	15	12		20	
2.39	6	12	8		
2.37	6	12	8		
2.36	12	12		16	
2.34	6	12	8		
2.19	8	12	10.67		
2.17	6	12	8		
2.09	8	12	10.67		
2.03	15	12		20	
1.91	6	12	8		
1.89	6	12	8		
1.79	6	12	8		
1.69	15	12		20	
1.67	10	12	13.33		
1.64	8	12	10.67		
1.59	6	12	8		
0.79	6	12	8		
0.77	15	12		20	
0.69	10	12	13.33		
0.52	6	12	8		
0.48	10	12	13.33		
0.47	10	12	13.33		
0.47	20	12			26.67
0.41	10	12	13.33		
0.39	20	12			26.67
0.37	6	12	8		
0.32	6	12	8		
0.31	20	12			26.67
0.24	8	12	10.67		
0.09	6	12	8		
0.04	6	12	8		
SUB TOTAL (1)			237.33	96	80.01

LOCATION (WESTBOUND)	LENGTH	WIDTH	CLASS C PATCHES, 13"		
			TYPE 2	TYPE 3	TYPE 4
MILE PT.	(FEET)	(FEET)	(SQ YDS)	(SQ YDS)	(SQ YDS)
2.49	6	12	8		
2.48	6	12	8		
2.44	6	12	8		
2.41	10	12	13.33		
2.39	6	12	8		
2.37	20	12			26.67
2.35	15	12		20	
2.31	6	12	8		
2.29	75	12			100
2.27	12	12		16	
2.24	12	12		16	
2.49	40	12			53.33
2.17	8	12		10.67	
2.16	20	12			26.67
2.14	12	12		16	
2.09	8	12		10.67	
2.07	15	12		20	
2.04	30	12			40
2.44	6	12	8		
1.94	6	12	8		
1.92	6	12	8		
1.89	6	12	8		
1.79	6	12	8		
1.69	15	12		20	
1.67	8	12		10.67	
1.64	15	12		20	
1.59	6	12	8		
1.39	15	12		20	
1.29	25	12			33.33
1.09	40	12			53.33
0.79	15	12		20	
0.69	10	12		13.33	
0.66	10	12		13.33	
0.64	6	12	8		
0.59	20	12			26.67
0.54	6	12	8		
0.51	12	12		16	
0.49	15	12		20	
0.48	15	12		20	
0.47	10	12		13.33	
0.43	12	12		16	
0.39	15	12		20	
0.34	8	12		10.67	
0.31	10	12		13.33	
0.29	6	12	8		
0.24	15	12		20	
0.19	6	12	8		
SUB TOTAL (2)			133.33	376	360

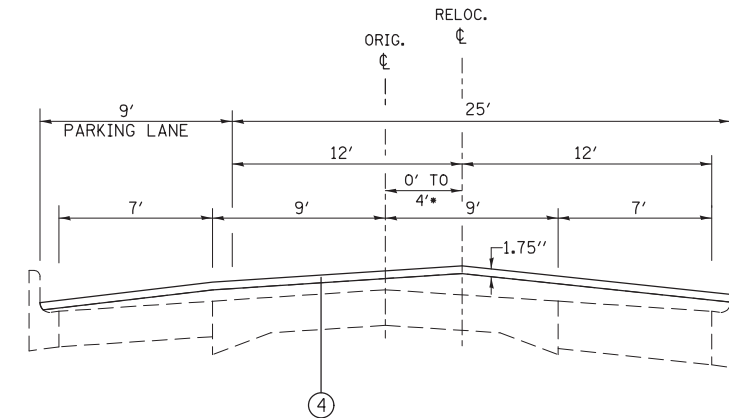
LOCATION (WESTBOUND)	LENGTH	WIDTH	CLASS C PATCHES, 13"		
			TYPE 2	TYPE 3	TYPE 4
MILE PT.	(FEET)	(FEET)	(SQ YDS)	(SQ YDS)	(SQ YDS)
0.15	35	12			46.67
0.09	15	12		20	
0.04	40	12			53.33
0.02	20	12			26.67
SUB TOTAL (3)			0	20	126.67
GRAND TOTAL			371	492	567

NOTE: MILE PT. 0.00 EQUALS STA. 855+05.00

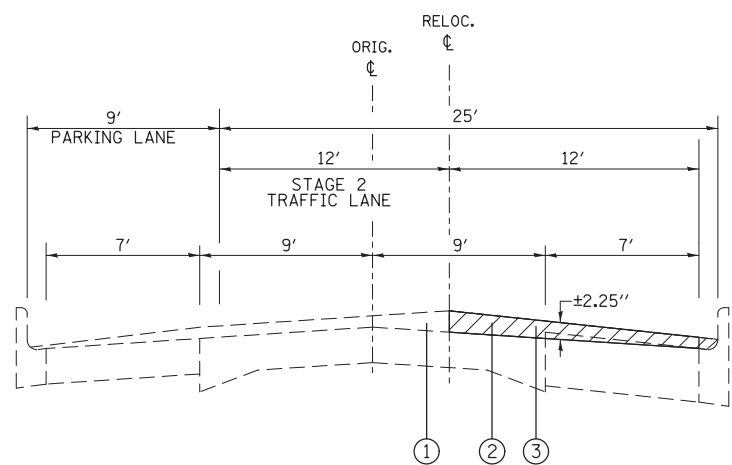
CURB RAMP SCHEDULE						
LOCATION	PCC SIDEWALK 4 INCH	DETECTABLE WARNINGS	CURB REMOVAL	SIDEWALK REMOVAL	MANHOLES TO BE ADJUSTED	COMBINATION CONCRETE CURB & GUTTER, TYPE B-6.24
	SQ FT	SQ FT	FOOT	SQ FT	EACH	FOOT
JAMES STREET - NE	180	11.75	20	175		20
JAMES STREET - SE	277	13.50	38	272		38
SPARTA STREET - SW	171	17.25	31	170	1	31
<b>TOTAL</b>	<b>628</b>	<b>42.50</b>	<b>89</b>	<b>617</b>	<b>1</b>	<b>89</b>



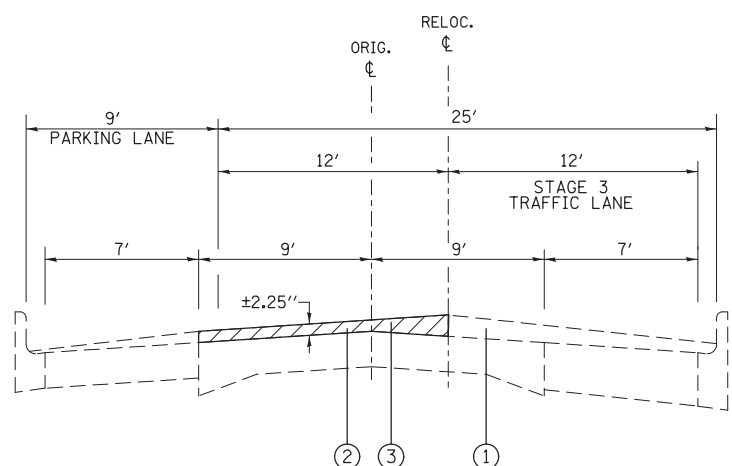
**STAGE 1**



**STAGE 4**



**STAGE 2**



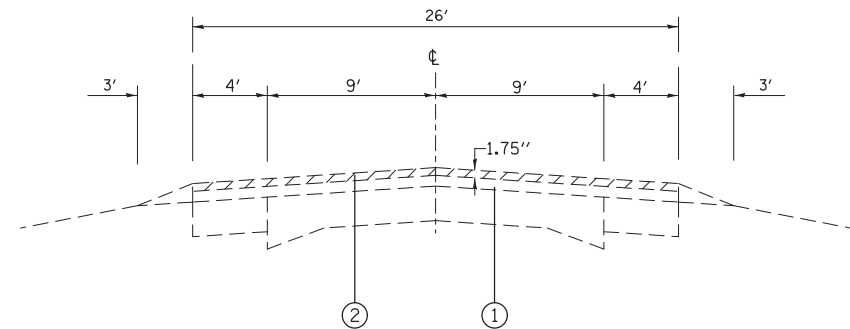
**STAGE 3**

- STAGE I:**  
MILL 1.75" OF EXISTING RESURFACING ACROSS ALL LANES (INCLUDING PARKING LANE) FOR ENTIRE LENGTH OF PROJECT.
- STAGE II:**  
PLACE TRAFFIC ON EASTBOUND LANES USING HIGHWAY STANDARDS 701201 AND 701501. MILL THE REMAINDER OF THE EXISTING RESURFACING ON WESTBOUND LANE. PLACE 2.25" OF BINDER COURSE ON THE WESTBOUND DRIVING LANE.
- STAGE III:**  
PLACE TRAFFIC ON WESTBOUND LANES USING HIGHWAY STANDARDS 701201 AND 701501. MILL THE REMAINDER OF THE EXISTING RESURFACING ON EASTBOUND LANE. PLACE 2.25" OF BINDER COURSE ON THE EASTBOUND DRIVING LANE.
- STAGE IV:**  
PLACE 1.75 INCHES OF HMA SURFACE COURSE ACROSS ALL LANES.

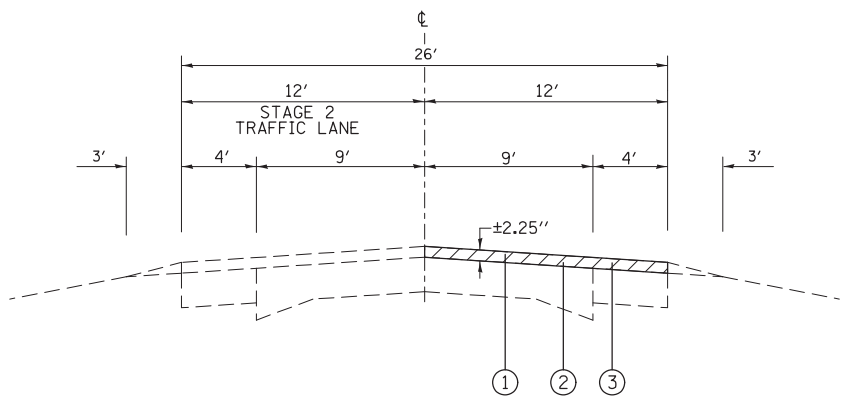
**LEGEND**

- ① EXISTING BITUMINOUS RESURFACING, ± 4"
- ② PROPOSED HMA SURFACE REMOVAL
- ③ PROPOSED HMA BINDER COURSE, 2.25"
- ④ PROPOSED HMA SURFACE COURSE, 1.75"

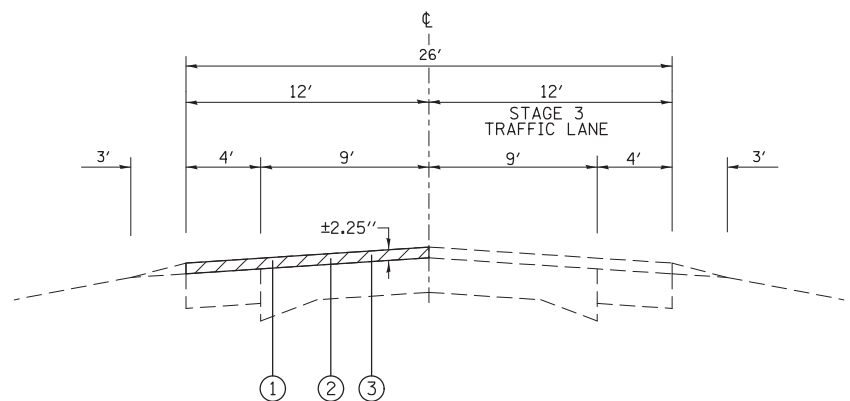
FILE NAME =	USER NAME = DintelmanJN	DESIGNED =	REVISED =	<b>STATE OF ILLINOIS DEPARTMENT OF TRANSPORTATION</b>	<b>STAGE CONSTRUCTION STA. 855 + 05 STA. 892 + 59</b>				F.A.P. RTE.	SECTION	COUNTY	TOTAL SHEETS	SHEET NO.
		CHECKED =	REVISED =		861A	110-IRS-3	RANDOLPH	31	14				
	PLOT SCALE = 100.1416 '' / in.	DATE =	REVISED =		CONTRACT NO. 76H47				ILLINOIS FED. AID PROJECT				
	PLOT DATE = 12/9/2016	DATE =	REVISED =		SCALE:	SHEET NO. 1 OF 2 SHEETS	STA.	TO STA.					



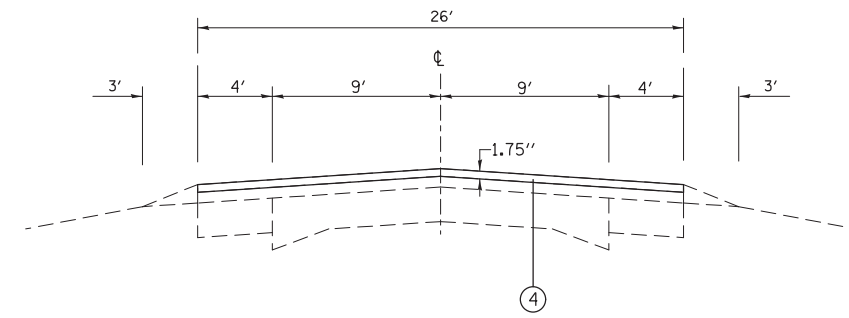
**STAGE 1**



**STAGE 2**



**STAGE 3**



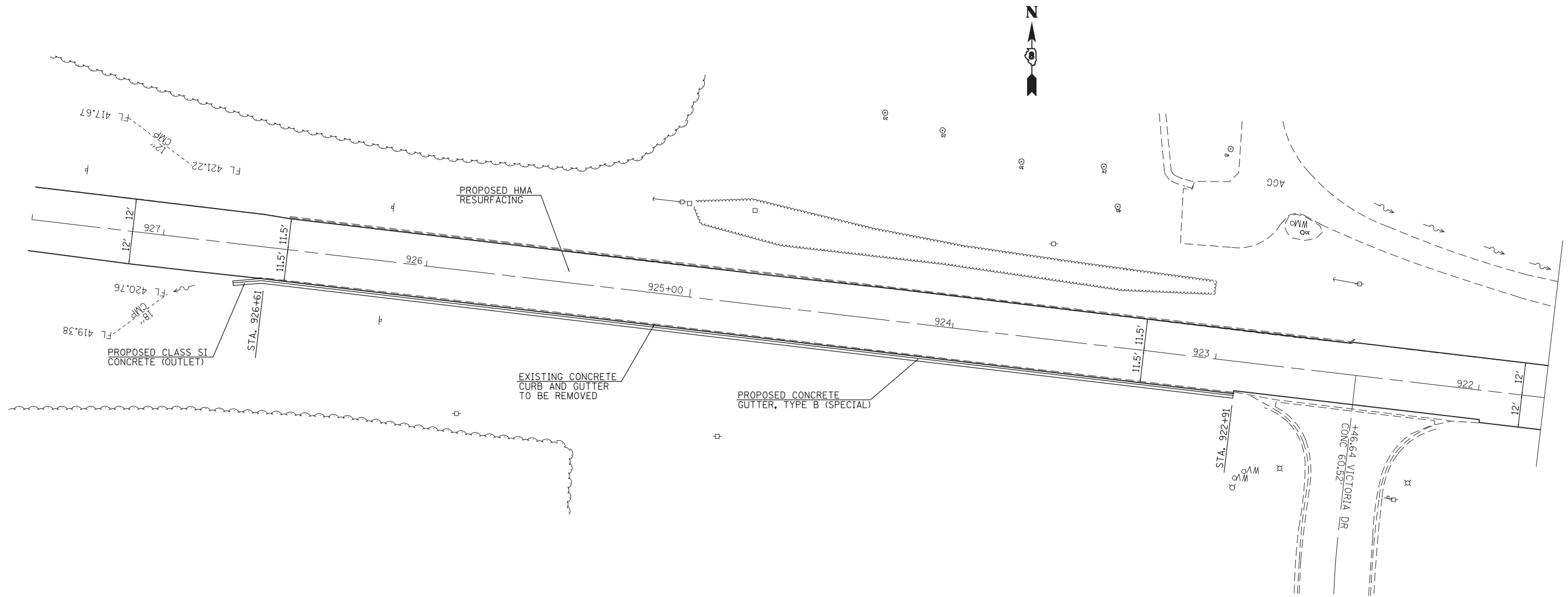
**STAGE 4**

**LEGEND**

- ① EXISTING BITUMINOUS RESURFACING, ± 4"
- ② PROPOSED HMA SURFACE REMOVAL
- ③ PROPOSED HMA BINDER COURSE, 2.25"
- ④ PROPOSED HMA SURFACE COURSE, 1.75"

- STAGE I:**  
MILL 1.75" OF EXISTING RESURFACING ACROSS ALL LANES (INCLUDING PARKING LANE) FOR ENTIRE LENGTH OF PROJECT.
- STAGE II:**  
PLACE TRAFFIC ON EASTBOUND LANES USING HIGHWAY STANDARDS 701201 AND 701501. MILL THE REMAINDER OF THE EXISTING RESURFACING ON WESTBOUND LANE. PLACE 2.25" OF BINDER COURSE ON THE WESTBOUND DRIVING LANE.
- STAGE III:**  
PLACE TRAFFIC ON WESTBOUND LANES USING HIGHWAY STANDARDS 701201 AND 701501. MILL THE REMAINDER OF THE EXISTING RESURFACING ON EASTBOUND LANE. PLACE 2.25" OF BINDER COURSE ON THE EASTBOUND DRIVING LANE.
- STAGE IV:**  
PLACE 1.75 INCHES OF HMA SURFACE COURSE ACROSS ALL LANES.

FILE NAME =	USER NAME = DintelmanJN	DESIGNED -	REVISED -	<b>STATE OF ILLINOIS DEPARTMENT OF TRANSPORTATION</b>	<b>STAGE CONSTRUCTION</b>		F.A.P. RTE.	SECTION	COUNTY	TOTAL SHEETS	SHEET NO.
pk:\IL084EBIDINTEG\illinois.gov\PWIDOT\Documents\IDOT Offices\District 8\Projects\DR76\DR76\Drawings\EA\Sheets\d876h47-sht-plan.dwg		CHECKED -	REVISED -		STA. 892 + 59 TO STA. 946 + 26 STA. 962 + 01 TO STA. 986 + 50		861A	110-IRS-3	RANDOLPH	31	15
		DATE -	REVISED -		SCALE: SHEET NO. 2 OF 2 SHEETS STA. TO STA.		CONTRACT NO. 76H47				
					FED. ROAD DIST. NO. ILLINOIS FED. AID PROJECT						



FILE NAME =	USER NAME = DntelmaJN	DESIGNED -	REVISED -
pw:\IL\084EBIDINTEG.illinois.gov\PIWIDOT\Documents\DOT Offices\District 8\Projects\0875\DRAWING\DATA\EA0sheets\d876h47-sht-plan.dwg		CHECKED -	REVISED -
Default	PLOT SCALE = 40.0000' / in.	DATE -	REVISED -
	PLOT DATE = 12/9/2016		

**STATE OF ILLINOIS  
DEPARTMENT OF TRANSPORTATION**

**PLAN SHEET - CONCRETE  
GUTTER, TYPE B (SPECIAL)**

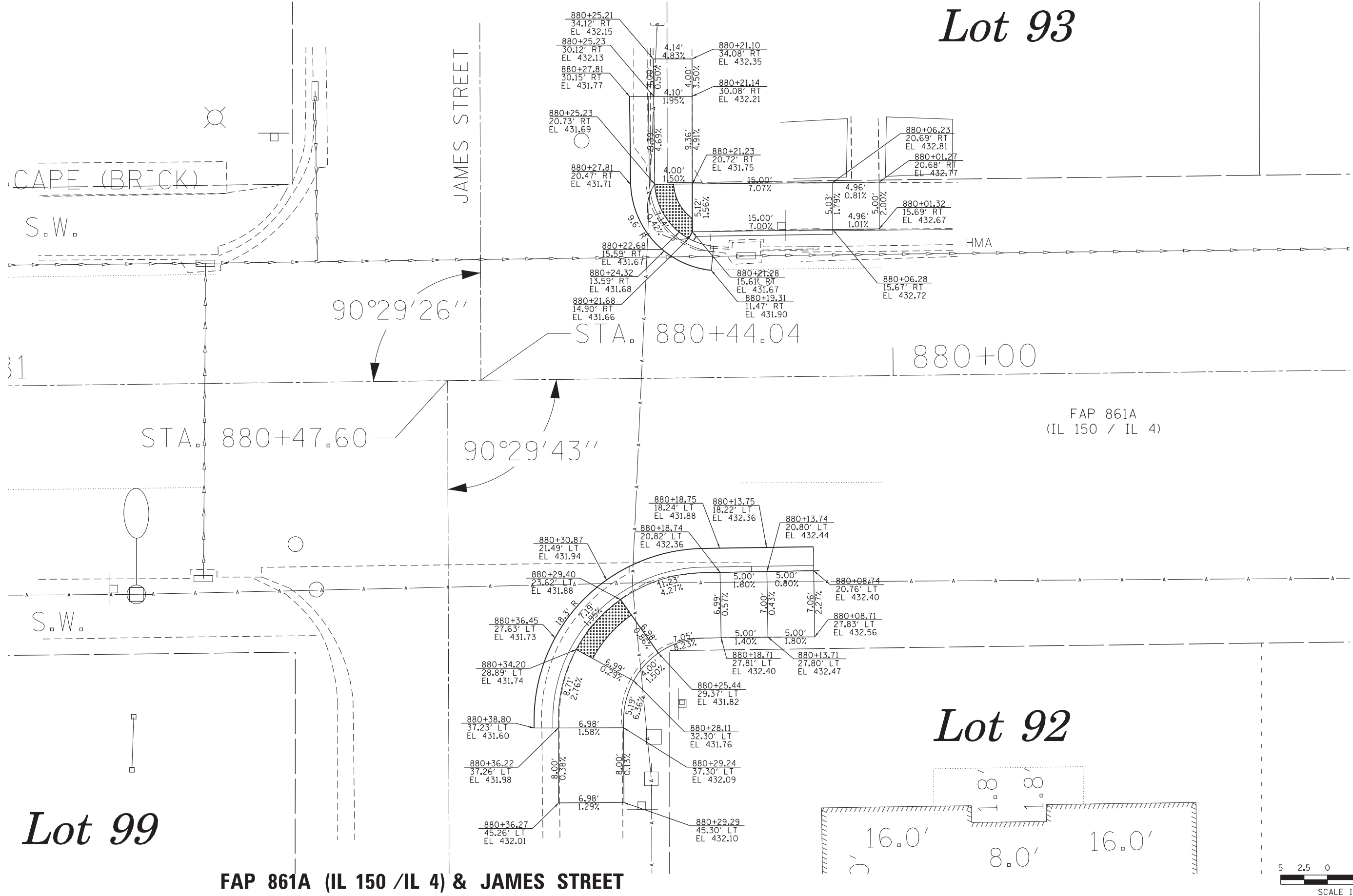
SCALE: SHEET OF SHEETS STA. TO STA.

F.A.P. RTE.	SECTION	COUNTY	TOTAL SHEETS	SHEET NO.
861A	110-IRS-3	RANDOLPH	31	16
CONTRACT NO. 76H47				
ILLINOIS FED. AID PROJECT				





# Lot 93



# Lot 99

# Lot 92

**FAP 861A (IL 150 /IL 4) & JAMES STREET**

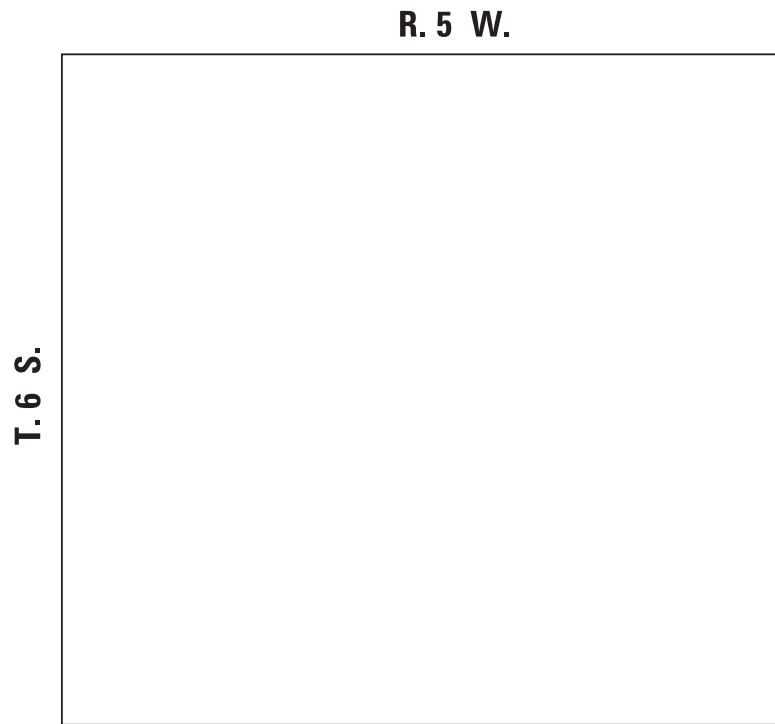


FILE NAME =	USER NAME = bschmidt	DESIGNED -	REVISED -	<b>STATE OF ILLINOIS DEPARTMENT OF TRANSPORTATION</b>	<b>ADA RAMP DETAILS JAMES STREET</b>			F.A.P.	SECTION	COUNTY	TOTAL SHEETS	SHEET NO.		
pw:\pw\01.hornershifrin.com\Transportation\Eng\Documents\0906620-SteelevilleADARamps\DRAWN\Transportation\0809024-shr-Detail\REVISED -		CHECKED -	REVISED -		SCALE: 1" = 10'	SHEET 1	OF 2 SHEETS	STA.	TO STA.	861A	110-IRS-3	RANDOLPH	31	17
PLOT SCALE = 10.0000' / in.		DATE -	REVISED -		CONTRACT NO. 76H47									
PLOT DATE = 11/28/2016					ILLINOIS FED. AID PROJECT									

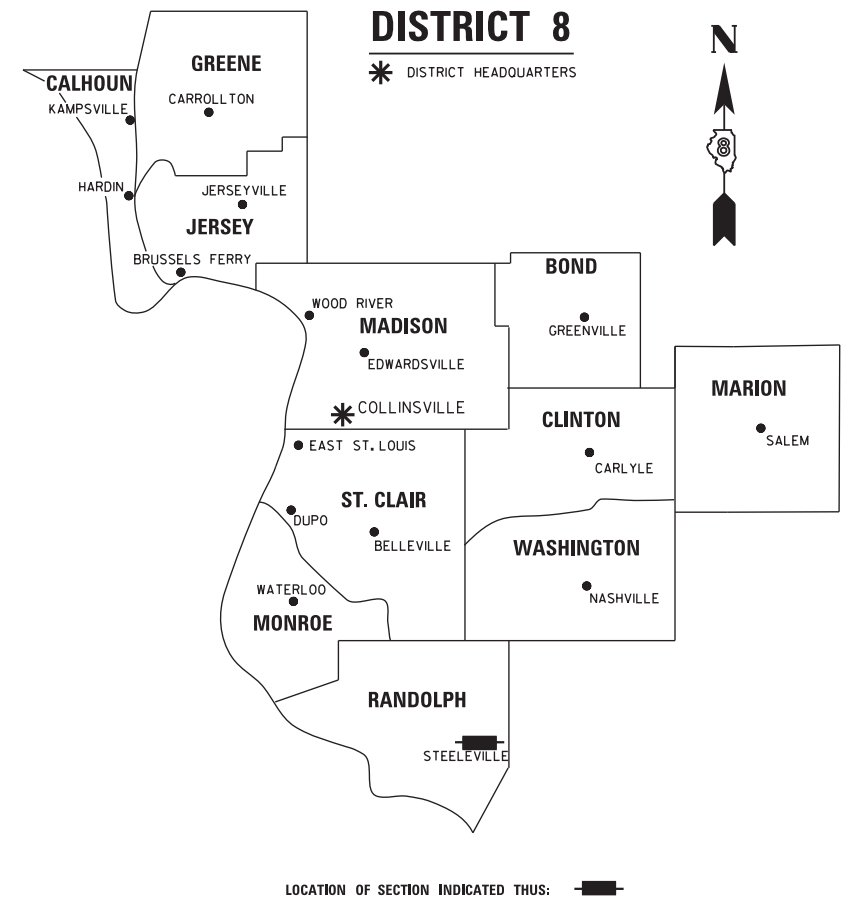
SHEET INDEX		
SHEET NO.	STATION TO STATION	DESCRIPTION
1	N/A	COVER
2	N/A	LEGEND/NOTES
3	861+71.72 TO 867+50	PLAT OF HIGHWAYS
4	867+50 TO 872+00	PLAT OF HIGHWAYS
5	872+00 TO 876+50	PLAT OF HIGHWAYS
6	876+50 TO 880+50	PLAT OF HIGHWAYS
7	880+50 TO 884+50	PLAT OF HIGHWAYS
8	884+50 TO 888+00	PLAT OF HIGHWAYS

**STATE OF ILLINOIS**  
**DEPARTMENT OF TRANSPORTATION**  
**DIVISION OF HIGHWAYS**  
**PLAT OF HIGHWAYS**  
**FAP ROUTE 861A (IL 150 /IL 4)**  
**SECTION 110-1RS-3**  
**RANDOLPH COUNTY**  
**JOB NO.**  
**R-98-002-17**

SPACE RESERVED FOR RECORDING OFFICER



PROJECT LENGTH = 2,628 LIN. FT. = 0.498 MILE



**PREPARED BY:**



**SHERRILL ASSOCIATES, INC.**  
 Engineers - Surveyors - Planners  
 Professional Design Firm Number 184-001238  
 316 North Main Street Tel: 618-656-9251  
 Edwardsville, IL 62025 Fax 618-656-9496



GREGORY S. McVICAR, PLS NO. 3512  
 LICENSE EXPIRATION DATE: 11/30/2018

SHEET 1 OF 8

ILLINOIS DEPARTMENT OF TRANSPORTATION DIVISION OF HIGHWAYS/REGION 5/DISTRICT 8 1102 EASTPORT PLAZA DRIVE COLLINSVILLE, ILLINOIS 62234-6198				
F.A. RTE.	SECTION	COUNTY	TOTAL SHEETS	SHEET NO.
861A	110-1RS-3	RANDOLPH	31	19
CONTRACT NO. 76H47				
FED. ROAD DIST. NO. ILLINOIS FED. AID PROJECT				

**LEGEND FOR EXISTING TOPOGRAPHIC SYMBOLS**

TRAFFIC SIGNAL HANDHOLE	□	DRAINAGE FLOW LINE	— —
TRAFFIC SIGNAL GULFBOX	○	RIP RAP	— — — — — — — —
TRAFFIC SIGNAL HANDHOLE	□	HEADWALL	— —
TRAFFIC SIGNAL SIGNAL POST	○	CULVERT END SECTION	— —
TRAFFIC SIGNAL STEEL MAST ARM	—○—	DRAINAGE MANHOLE	○
TRAFFIC SIGNAL COMBINED MAST ARM	—○—	INLET	—○—
TRAFFIC SIGNAL PEDESTRIAN PUSH BUTTON	●	ROADWAY DITCH FLOW	— — — —
TRAFFIC SIGNAL WOODEN POLE	○	VEGETATION LINE	— — — — — — — —
TRAFFIC SIGNAL VEHICLE DETECTION PRIORITY	□	STUMP	— —
TRAFFIC SIGNAL VEHICLE DETECTION MAGNET	□	SHRUB	—○—
TRAFFIC SIGNAL JUNCTION BOX	□	EVERGREEN TREE	—○—
TRAFFIC SIGNAL CONTROLLER	□	DECIDUOUS TREE	—○—
TRAFFIC SIGNAL HEAVY DUTY HANDHOLE	□	WOODS/BUSH PATTERN	— — — — — — — —
RAILROAD CANTILEVER MAST ARM	— — — — — — — —	TRAFFIC SIGN	— —
RAILROAD CROSSBUCK	— — — — — — — —	GAURDRAIL POST	— —
RAILROAD TRACK PATTERN	— — — — — — — —	GAURDRAIL PATTERN	— — — — — — — —
RAILROAD ABANDON PATTERN	— — — — — — — —	FIELD LINE	— — — — — — — —
RAILROAD CROSSGATE	— — — — — — — —	LEVEE/NOISE BARRIER	— — — — — — — —
RAILROAD CONTROL BOX	— — — — — — — —	FENCE PATTERN	— — — — — — — —
RAILROAD FLASHING SIGNAL	— — — — — — — —	MAIL BOX	— —
TELEPHONE SPLICE BOX ABOVE GROUND	— — — — — — — —	ADVERTISING SIGN	— —
UTILITY POWER POLE	— — — — — — — —	MARSH	— — — — — — — —
TELEPHONE POLE	— — — — — — — —	LIGHTING HANDHOLE	— —
UTILITY TRAFFIC SIGNAL	— — — — — — — —	LIGHTING POWER POLE	— —
UTILITY LIGHT POLE	— — — — — — — —	LIGHTING JUNCTION BOX	— —
FIRE HYDRANT	— — — — — — — —	LIGHTING HEAVYDUTY HANDHOLE	— —
UTILITY MANHOLE	— — — — — — — —	LIGHTING CONTROLLER	— —
UTILITY TELEPHONE POLE	— — — — — — — —	LIGHTING PULL POINT	— —
UTILITY GUY POLE	— — — — — — — —	HIGHWAY LIGHTING ELECTRICAL GROUND	— —
PIPELINE WARNING SIGN	— — — — — — — —	HIGHWAY LIGHTING SINGLE UNIT	— —
UTILITY HANDHOLE	— — — — — — — —	HIGHWAY LIGHTING DOUBLE UNIT	— —
UTILITY SPLICE ABOVE GROUND	— — — — — — — —	EXISTING CONCRETE BARRIER	— — — — — — — —
UTILITY JUNCTION BOX	— — — — — — — —	EXISTING CREEK OR DITCH	— — — — — — — —
UTILITY HEAVY DUTY HANDHOLE	— — — — — — — —	EXISTING EDGE OF PAVEMENT	— — — — — — — —
UTILITY DOUBLE HANDHOLE	— — — — — — — —		
UTILITY CONTROLLER	— — — — — — — —		
UTILITY WATER METER	— — — — — — — —		

**RIGHT OF WAY LEGEND**

	SECTION CORNERS		QUARTER SECTION CORNERS
---	EXISTING CENTERLINE	---	EXISTING RIGHT OF WAY LINE
---	FORMER RIGHT OF WAY LINE	---	EXISTING IDOT EASEMENT LINE
---	EXISTING EASEMENT LINE	---	EXISTING ACCESS CONTROL LINE
---	BUILDING SETBACK LINE	---	EXISTING RIGHT OF WAY & PROPOSED ACCESS CONTROL LINE
---	EXISTING ACCESS CONTROL LINE	---	PROPOSED ACCESS CONTROL LINE
---	PROPOSED CENTERLINE	---	PROPOSED RIGHT OF WAY LINE
---	PROPOSED TEMPORARY EASEMENT LINE	---	PROPOSED TEMPORARY EASEMENT LINE
---	PROPOSED PERMANENT EASEMENT LINE	---	SECTION LINE
---	QUARTER SECTION LINE	---	QUARTER SECTION LINE
---	PROPERTY LINE	---	FORMER PROPERTY LINE
---	FORMER PROPERTY LINE WITHIN RIGHT OF WAY	---	APPL
---	APPL	---	MEASURED DIMENSION
---	121.45'	---	RECORDED DIMENSION
---	(121.45')	---	FOUND STONE
---	□	---	FOUND IRON PIPE OR IRON ROD AT CORNER UNLESS OTHERWISE NOTED
---	○	---	SET 5/8 INCH IRON ROD WITH PLASTIC CAP IDENTIFIED BY SURVEYORS LICENSE NUMBER AT CORNER UNLESS OTHERWISE NOTED
---	●	---	PERMANENT SURVEY MONUMENT, I.D.O.T. STD. 667101 (TO BE SET BY OTHERS)
---	▲	---	SET 5/8 INCH IRON ROD AS SURVEY CONTROL UNLESS OTHERWISE NOTED
---	+	---	FOUND CUT CROSS
---	+	---	SET CUT CROSS
---	---	---	SAME OWNERSHIP
---	---	---	EXISTING BUILDING
---	---	---	EXISTING CANOPY/OVERHANG
---	---	---	EXISTING BUILDING DIMENSIONS/NOTES
---	---	---	12.3'
---	---	---	STAKING OF PROPOSED RIGHT OF WAY CORNERS. SET 5/8 INCH METAL ROD WITH DIVISION OF HIGHWAY SURVEY ALUMINUM CAP TO MONUMENT THE POSITION SHOWN. IDENTIFIED BY INSCRIPTION DATA AND SURVEYORS LICENSE NUMBER. (PROPOSED RIGHT OF WAY CORNERS SET IN CULTIVATED AREAS SHALL BE A MINIMUM OF 20 INCHES BELOW THE GROUND SURFACE).

**LEGEND FOR ABBREVIATIONS**

A/C	ACCESS CONTROL
AC	ACRE
AVE	AVENUE
BK	BOOK
BLVD	BOULEVARD
C	CENTERLINE
CH	COUNTY HIGHWAY
Ch	CHAIN
DB	DEED BOOK
E	EAST
EX	EXISTING
FA	FEDERAL AID
FAI	FEDERAL AID INTERSTATE
FAP	FEDERAL AID PRIMARY
FAS	FEDERAL AID SECONDARY
FAUS	FEDERAL AID URBAN SECONDARY
FND	FOUND
ha	HECTARE
IP	IRON PIPE
IR	IRON ROD
LT	LEFT
m	METER
m <sup>2</sup>	SQUARE METERS
N	NORTH
N & BC	NAIL AND BOTTLE CAP
N & C	NAIL AND CAP
N & W	NAIL AND WASHER
NE	NORTHEAST
NW	NORTHWEST
PB	PLAT BOOK
PG	PAGE
POB	POINT OF BEGINNING
POC	POINT OF COMMENCEMENT
POT	POINT OF TANGENT
P	PROPERTY LINE
PR	PROPOSED
RD	ROAD
ROW	RIGHT OF WAY
RR	RAILROAD
RRS	RAILROAD SPIKE
RT	RIGHT
RTE	ROUTE
S	SOUTH
SBI	STATE BOND ISSUE
SE	SOUTHEAST
SQ FT	SQUARE FEET
SR	STATE ROUTE
ST	STREET
STA	STATION
SMK	SURVEY MARKER
SW	SOUTHWEST
TWP	TOWNSHIP
TR	TOWNSHIP ROAD
USGS	U.S. GEOLOGICAL SURVEY
W	WEST

**PROPOSED PARCEL NUMBER LEGEND**

8001001	PROPOSED FEE SIMPLE ACQUISITION
8001001PE	PROPOSED PERMANENT EASEMENT
8001001TE	PROPOSED TEMPORARY EASEMENT
8001001DED	PROPOSED DEDICATION
8001001AC	PROPOSED ACCESS CONTROL LINE

**CURVE ABBREVIATIONS**

PC	POINT OF CURVATURE
PI	POINT OF INTERSECTION
PT	POINT OF TANGENCY
PRC	POINT OF REVERSE CURVE
PCC	POINT OF COMPOUND CURVE
CB	CHORD BEARING
R	RADIUS OF CURVE
L	CURVE LENGTH
CB	CHORD BEARING
C	CHORD LENGTH
D	DEGREE OF CURVE
e	EXTERNAL
△	CENTRAL ANGLE

SPACE RESERVED FOR RECORDING OFFICER

**PREPARED BY:**



**SHERRILL ASSOCIATES, INC.**  
Engineers - Surveyors - Planners  
Professional Design Firm Number 184-001238  
316 North Main Street, Edwardsville, IL 62025  
Tel. 618-656-9251, Fax 618-656-9496



GREGORY S. McVICAR, PLS NO. 3512  
LICENSE EXPIRATION DATE: 11/30/2018

**TOTAL HOLDING AREA SOURCE TABLE**

1	AREA ACCORDING TO THE SURVEY PERFORMED BY THE CONSULTANT.
2	AREA LISTED IN RECORDED DEED.
3	AREA ACCORDING TO A RECORDED SUBDIVISION PLAT.
4	AREA ACCORDING TO A PLAT OF SURVEY.
5	AREA CALCULATED FROM RECORDED DEEDS OR TITLE COMMITMENTS - NOT SURVEYED.
6	AREA ACCORDING TO COUNTY TAX MAPS AND COUNTY ASSESSMENT RECORDS.
7	AREA ACCORDING TO OTHER RECORDS, SEE NOTE ON THE PLAT OF HIGHWAYS.

**TOPOGRAPHIC STATEMENT**

THE TOPOGRAPHY SHOWN HEREON WAS PROVIDED TO THE SURVEYOR BY THE ILLINOIS DEPARTMENT OF TRANSPORTATION. THE SURVEYOR VISUALLY FIELD VERIFIED THE EXISTENCE OF THE TOPOGRAPHY SHOWN HEREON. NO ADDITIONAL ITEMS WERE LOCATED IN THE FIELD BY THE SURVEYOR.

**BASIS OF COORDINATE & BEARING STATEMENT**

THE PROJECT COORDINATES AND BASIS OF BEARING WERE ESTABLISHED BY THE ILLINOIS DEPARTMENT OF TRANSPORTATION.

PROJECT COORDINATES ARE BASED ON THE ILLINOIS STATE PLANE COORDINATE SYSTEM, WEST ZONE, NAD 83 (1997) GROUND COORDINATES. TWO MILLION HAS BEEN TRUNCATED FROM THE EASTING TO DISTINGUISH PROJECT COORDINATES AS GROUND COORDINATES.

**SHERRILL ASSOCIATES, INC.**  
Engineers - Surveyors - Planners  
Professional Design Firm Number 184-001238  
316 North Main Street, Edwardsville, IL 62025  
Tel. 618-656-9251, Fax 618-656-9251

ILLINOIS DEPARTMENT OF TRANSPORTATION  
**PLAT OF HIGHWAYS**  
FAP ROUTE 861A (IL 150 / IL 4)  
SECTION 110-1RS-3  
RANDOLPH COUNTY  
JOB NO. R-98-002-17  
GENERAL NOTES AND LEGEND

SHEET 2 OF 8

ILLINOIS DEPARTMENT OF TRANSPORTATION  
DIVISION OF HIGHWAYS/REGION 5/DISTRICT 8  
1102 EASTPORT PLAZA DRIVE  
COLLINGSVILLE, ILLINOIS 62234-6198

F.A. RTE.	SECTION	COUNTY	TOTAL SHEETS	SHEET NO.
861A	110-1RS-3	RANDOLPH	31	20
CONTRACT NO. 76H47				
FED. ROAD DIST. NO. - ILLINOIS FED. AID PROJECT				

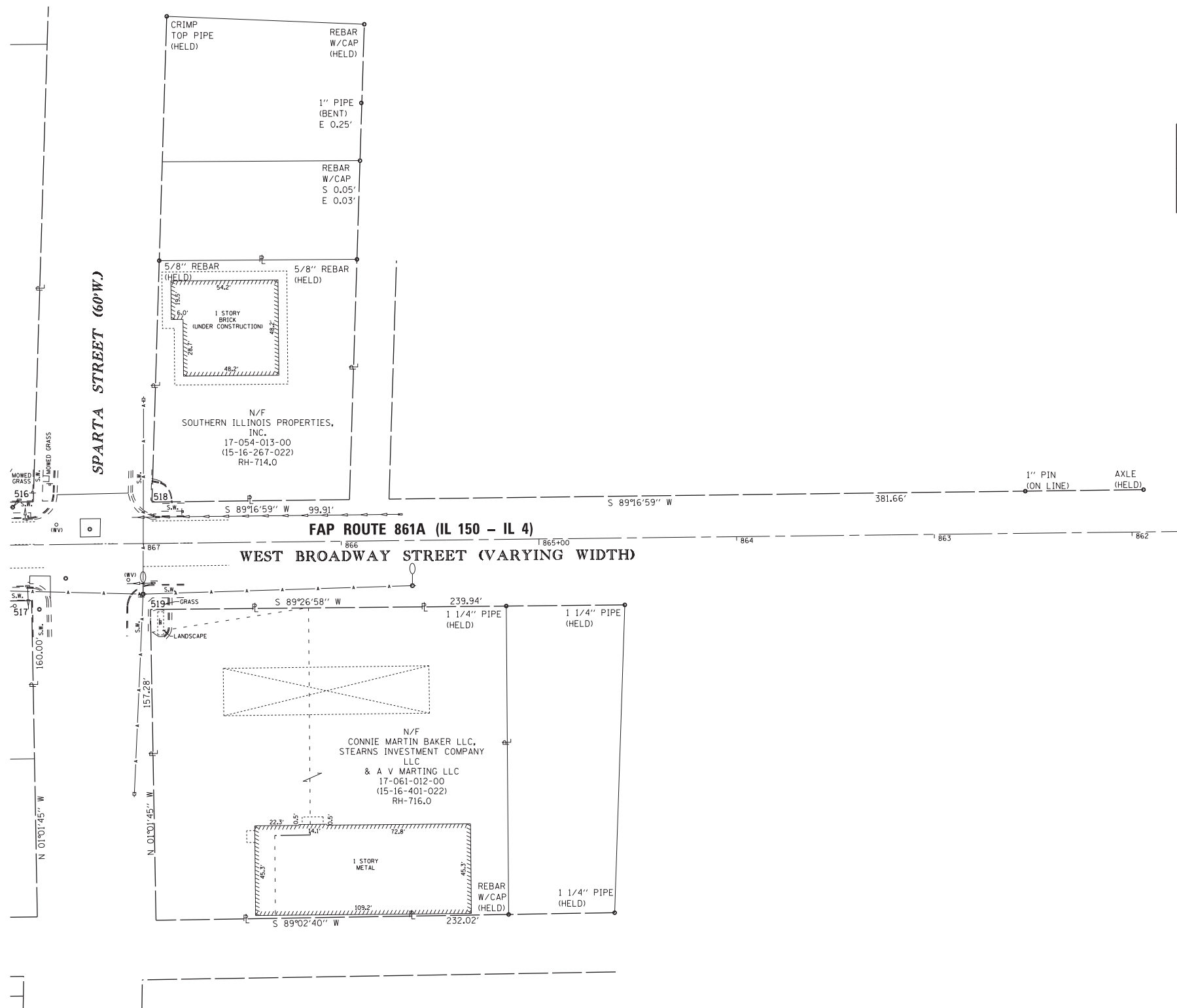
PART OF THE SW 1/4 AND THE NW 1/4 OF SEC 16, T 6 S, R 5 W, OF THE 3RD PM, RANDOLPH COUNTY



SPACE RESERVED FOR RECORDING OFFICER

SEE LEGENDS, TOPOGRAPHIC STATEMENT, SURVEYORS NOTE(S) AND BASIS OF COORDINATES & BEARINGS STATEMENT ON SHEET 2

COORDINATE TABLE				
POINT NO.	STATION	OFFSET	NORTHING	EASTING
516	867+55.54	21.77 RT.	488459.8962	2443005.0951
517	867+56.94	28.23 LT.	488409.8839	2443004.2851
518	866+95.52	20.95 RT.	488459.7751	2443065.1192
519	866+96.91	33.38 LT.	488405.4316	2443064.3655



STATE OF ILLINOIS )  
 ) SS  
 COUNTY OF MADISON )

I, GREGORY S. McVICAR, AN ILLINOIS PROFESSIONAL LAND SURVEYOR, CERTIFY THAT I HAVE SURVEYED THE PLAT OF HIGHWAY SHOWN HEREON AND THAT THIS PROFESSIONAL SERVICE CONFORMS TO THE CURRENT ILLINOIS MINIMUM STANDARDS FOR A BOUNDARY SURVEY FOR THE PROPOSED PARCEL TO BE ACQUIRED BY THE STATE OF ILLINOIS, DEPARTMENT OF TRANSPORTATION, SHOWN HEREON.

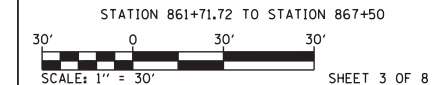
DATED \_\_\_\_\_

GREGORY S. McVICAR, PLS NO. 3512  
 LICENSE EXPIRATION DATE: 11/30/2018



**SA SHERRILL ASSOCIATES, INC.**  
 Engineers - Surveyors - Planners  
 Professional Design Firm Number 184-001238  
 316 North Main Street Tel. 618-656-9251  
 Edwardsville, IL 62025 Fax 618-656-9496

ILLINOIS DEPARTMENT OF TRANSPORTATION  
**PLAT OF HIGHWAYS**  
 FAP ROUTE 861A (IL 150 / IL 4)  
 SECTION 110-IRS-3  
 RANDOLPH COUNTY  
 JOB NO. R-98-002-17



ILLINOIS DEPARTMENT OF TRANSPORTATION  
 DIVISION OF HIGHWAYS/REGION 5/DISTRICT 8  
 1102 EASTPORT PLAZA DRIVE  
 COLLINSVILLE, ILLINOIS 62234-6198

F.A. RTE.	SECTION	COUNTY	TOTAL SHEETS	SHEET NO.
861A	110-IRS-3	RANDOLPH	31	21

COMPLETION DATE OF FIELD WORK PERFORMED		CONTRACT NO. 76H47	
LAND SURVEY: MARCH, 2016	ROW STAKING:	FED. ROAD DIST. NO. - ILLINOIS FED. AID PROJECT	



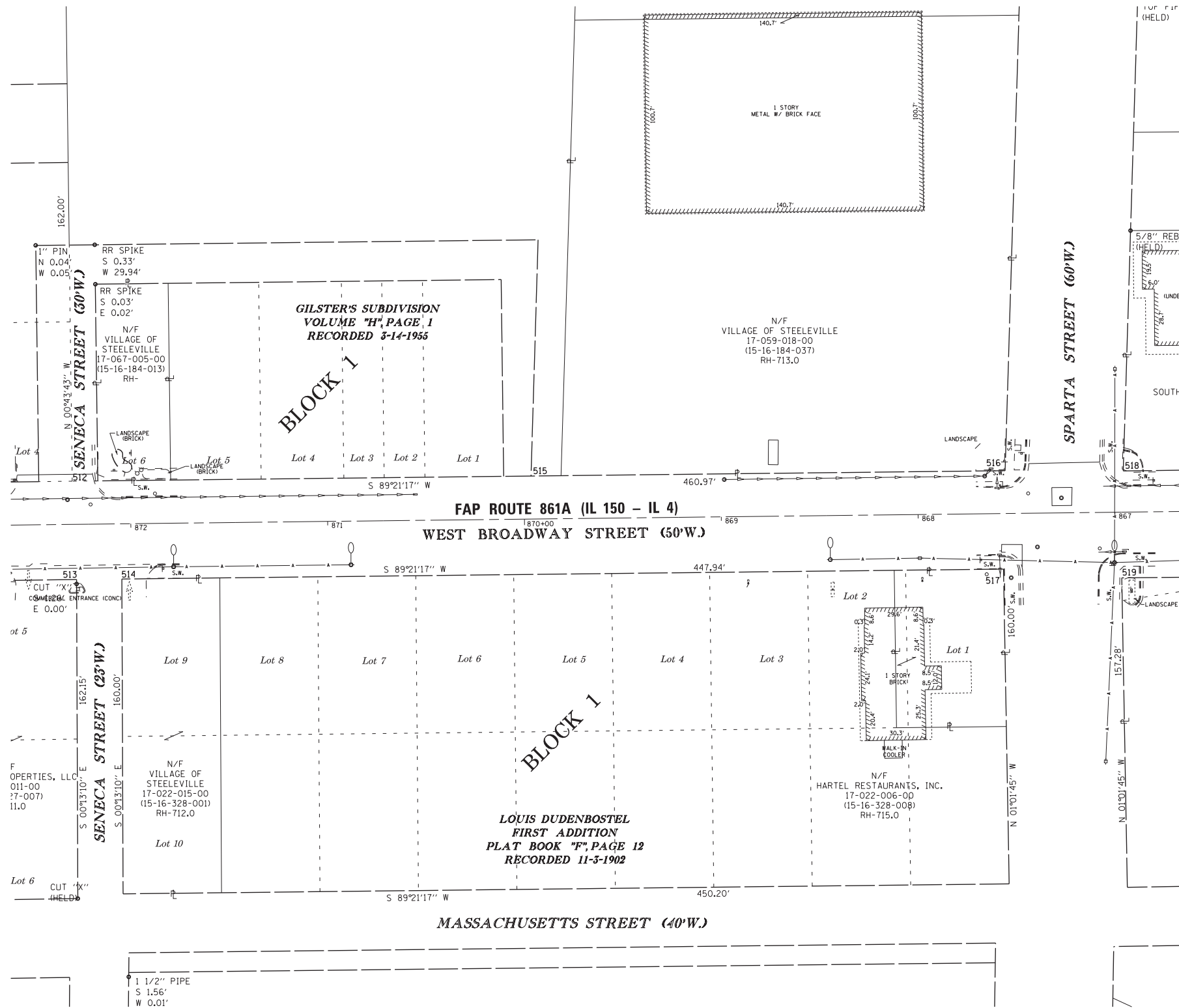
PART OF THE SW 1/4 AND THE NW 1/4 OF SEC 16, T 6 S, R 5 W, OF THE 3RD PM, RANDOLPH COUNTY



SPACE RESERVED FOR RECORDING OFFICER

SEE LEGENDS, TOPOGRAPHIC STATEMENT, SURVEYORS NOTE(S) AND BASIS OF COORDINATES & BEARINGS STATEMENT ON SHEET 2

COORDINATE TABLE				
POINT NO.	STATION	OFFSET	NORTHING	EASTING
512	872+29.51	21.95 RT.	488454.5590	2442531.1543
513	872+27.87	28.05 LT.	488404.5841	2442533.3764
514	872+04.87	28.06 LT.	488404.8398	2442556.3756
515	869+96.41	21.86 RT.	488457.1838	2442764.2395
516	867+55.54	21.77 RT.	488459.8962	2443005.0951
517	867+56.94	28.23 LT.	488409.8839	2443004.2851
518	866+95.52	20.95 RT.	488459.7751	2443065.1192
519	866+96.91	33.38 LT.	488405.4316	2443064.3655



STATE OF ILLINOIS )  
 ) SS  
 COUNTY OF MADISON )

I, GREGORY S. McVICAR, AN ILLINOIS PROFESSIONAL LAND SURVEYOR, CERTIFY THAT I HAVE SURVEYED THE PLAT OF HIGHWAY SHOWN HEREON AND THAT THIS PROFESSIONAL SERVICE CONFORMS TO THE CURRENT ILLINOIS MINIMUM STANDARDS FOR A BOUNDARY SURVEY FOR THE PROPOSED PARCEL TO BE ACQUIRED BY THE STATE OF ILLINOIS, DEPARTMENT OF TRANSPORTATION, SHOWN HEREON.

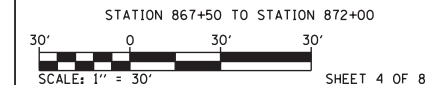
DATED \_\_\_\_\_

GREGORY S. McVICAR, PLS NO. 3512  
 LICENSE EXPIRATION DATE: 11/30/2018



**SA** **SHERRILL ASSOCIATES, INC.**  
 Engineers - Surveyors - Planners  
 Professional Design Firm Number 184-001238  
 316 North Main Street Tel. 618-656-9251  
 Edwardsville, IL 62025 Fax 618-656-9496

ILLINOIS DEPARTMENT OF TRANSPORTATION  
**PLAT OF HIGHWAYS**  
 FAP ROUTE 861A (IL 150 / IL 4)  
 SECTION 110-1RS-3  
 RANDOLPH COUNTY  
 JOB NO. R-98-002-17



ILLINOIS DEPARTMENT OF TRANSPORTATION  
 DIVISION OF HIGHWAYS/REGION 5/DISTRICT 8  
 1102 EASTPORT PLAZA DRIVE  
 COLLINSVILLE, ILLINOIS 62234-6198

F.A. RTE.	SECTION	COUNTY	TOTAL SHEETS	SHEET NO.
861A	110-1RS-3	RANDOLPH	31	22

COMPLETION DATE OF FIELD WORK PERFORMED: \_\_\_\_\_  
 LAND SURVEY: MARCH, 2016 ROW STAKING: \_\_\_\_\_  
 CONTRACT NO. 76H47  
 FED. ROAD DIST. NO. - ILLINOIS FED. AID PROJECT

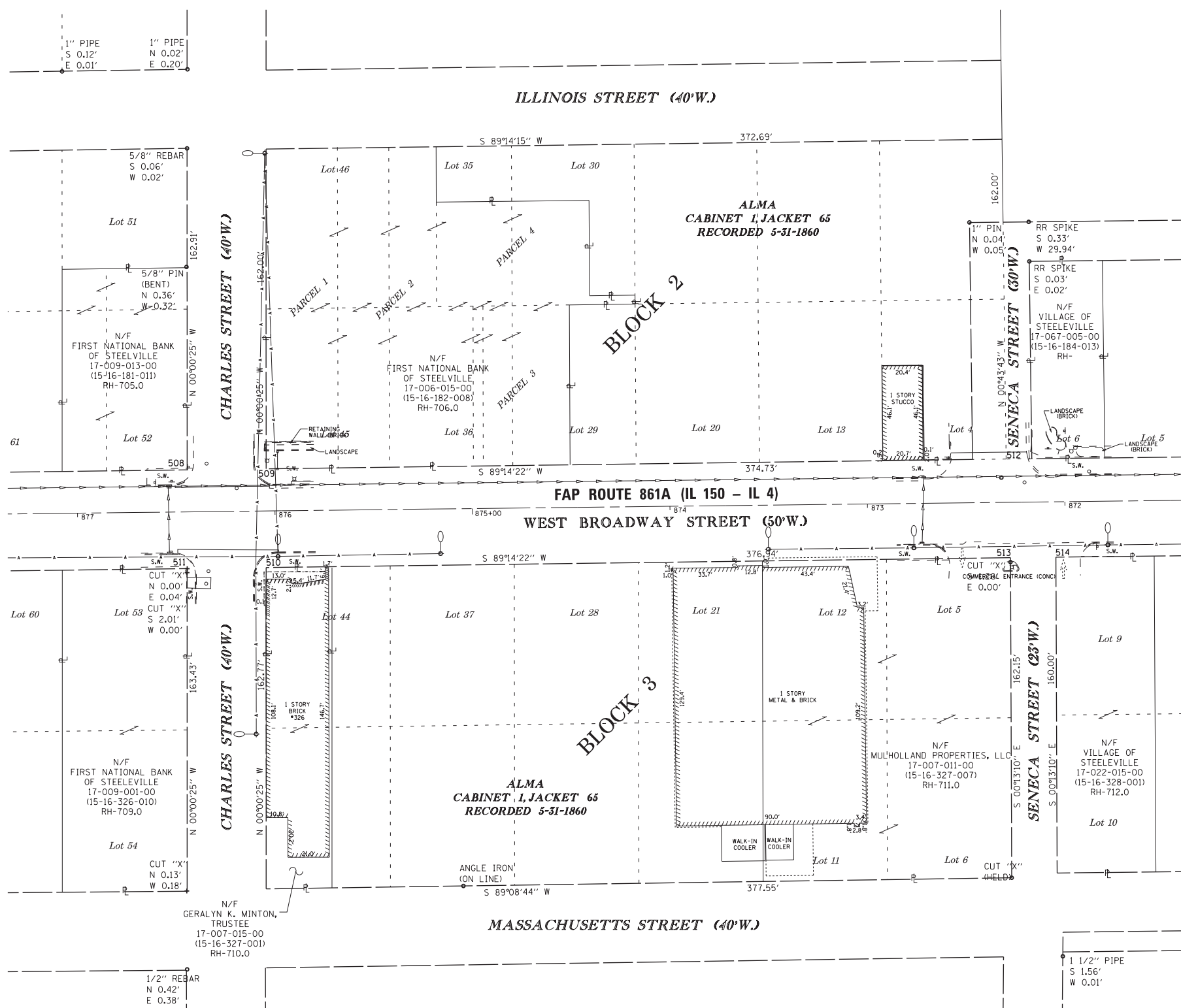
PART OF THE SW 1/4 AND THE NW 1/4 OF SEC 16, T 6 S, R 5 W, OF THE 3RD PM, RANDOLPH COUNTY



SPACE RESERVED FOR RECORDING OFFICER

SEE LEGENDS, TOPOGRAPHIC STATEMENT, SURVEYORS NOTE(S) AND BASIS OF COORDINATES & BEARINGS STATEMENT ON SHEET 2

COORDINATE TABLE				
POINT NO.	STATION	OFFSET	NORTHING	EASTING
508	876+44.24	21.28 RT.	488449.0543	2442116.4618
509	876+04.24	21.34 RT.	488449.5856	2442156.4618
510	876+04.81	28.66 LT.	488399.5813	2442156.4679
511	876+44.82	28.72 LT.	488399.0503	2442116.4679
512	872+29.51	21.95 RT.	488454.5590	2442531.1543
513	872+27.87	28.05 LT.	488404.5841	2442533.3764
514	872+04.87	28.06 LT.	488404.8398	2442556.3756



STATE OF ILLINOIS )  
 ) SS  
 COUNTY OF MADISON )

I, GREGORY S. McVICAR, AN ILLINOIS PROFESSIONAL LAND SURVEYOR, CERTIFY THAT I HAVE SURVEYED THE PLAT OF HIGHWAY SHOWN HEREON AND THAT THIS PROFESSIONAL SERVICE CONFORMS TO THE CURRENT ILLINOIS MINIMUM STANDARDS FOR A BOUNDARY SURVEY FOR THE PROPOSED PARCEL TO BE ACQUIRED BY THE STATE OF ILLINOIS, DEPARTMENT OF TRANSPORTATION, SHOWN HEREON.

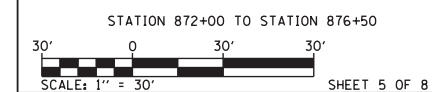
DATED \_\_\_\_\_

GREGORY S. McVICAR, PLS NO. 3512  
 LICENSE EXPIRATION DATE: 11/30/2018



**SA SHERRILL ASSOCIATES, INC.**  
 Engineers - Surveyors - Planners  
 Professional Design Firm Number 184-001238  
 316 North Main Street Tel. 618-656-9251  
 Edwardsville, IL 62025 Fax 618-656-9496

ILLINOIS DEPARTMENT OF TRANSPORTATION  
**PLAT OF HIGHWAYS**  
 FAP ROUTE 861A (IL 150 / IL 4)  
 SECTION 110-IRS-3  
 RANDOLPH COUNTY  
 JOB NO. R-98-002-17



ILLINOIS DEPARTMENT OF TRANSPORTATION  
 DIVISION OF HIGHWAYS/REGION 5/DISTRICT 8  
 1102 EASTPORT PLAZA DRIVE  
 COLLINGSVILLE, ILLINOIS 62234-6198

F.A. RTE.	SECTION	COUNTY	TOTAL SHEETS	SHEET NO.
861A	110-IRS-3	RANDOLPH	31	23

COMPLETION DATE OF FIELD WORK PERFORMED \_\_\_\_\_  
 LAND SURVEY: MARCH, 2016 ROW STAKING: \_\_\_\_\_

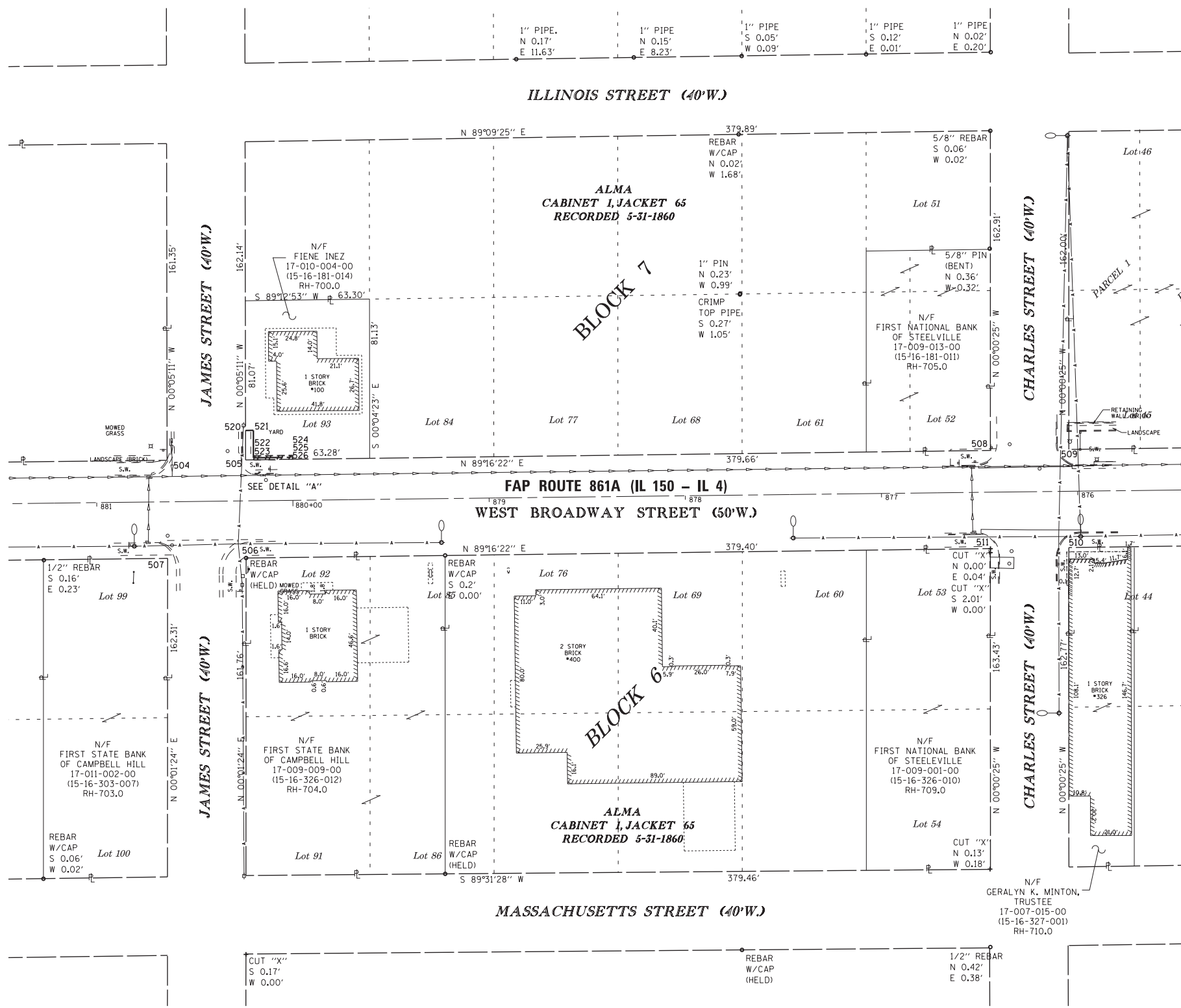
FED. ROAD DIST. NO. - ILLINOIS FED. AID PROJECT \_\_\_\_\_ CONTRACT NO. 76H47

PART OF THE SW 14 AND THE NW 14 OF SEC 16, T 6 S, R 5 W, OF THE 3RD PM, RANDOLPH COUNTY

SEE LEGENDS, TOPOGRAPHIC STATEMENT, SURVEYORS NOTE(S) AND BASIS OF COORDINATES & BEARINGS STATEMENT ON SHEET 2

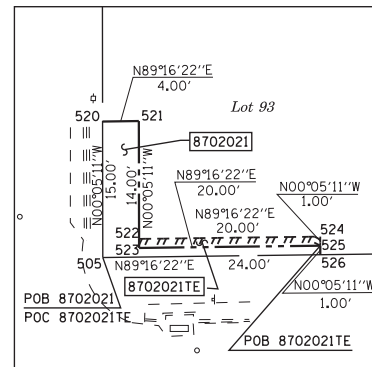


SPACE RESERVED FOR RECORDING OFFICER



COORDINATE TABLE

POINT NO.	STATION	OFFSET	NORTHING	EASTING
504	880+63.90	21.18 RT.	488444.0684	2441696.8340
505	880+23.90	20.88 RT.	488444.2350	2441736.8338
506	880+24.21	29.12 LT.	488394.2344	2441737.1032
507	880+64.21	28.82 LT.	488394.0682	2441697.1031
508	876+44.24	21.28 RT.	488449.0543	2442116.4618
509	876+04.24	21.34 RT.	488449.5856	2442156.4618
510	876+04.81	28.66 LT.	488399.5813	2442156.4679
511	876+44.82	28.72 LT.	488399.0503	2442116.4679
520	880+23.75	35.88 RT.	488459.2359	2441736.8112
521	880+19.75	35.88 RT.	488459.2867	2441740.8109
522	880+19.88	22.88 RT.	488446.2859	2441740.8305
523	880+19.89	21.88 RT.	488445.2858	2441740.8320
524	879+99.88	22.90 RT.	488446.5397	2441760.8289
525	879+99.89	21.90 RT.	488445.5397	2441760.8304
526	879+99.90	20.90 RT.	488444.5396	2441760.8319



DETAIL "A"  
SCALE: 1"=10'

STATE OF ILLINOIS )  
 ) SS  
COUNTY OF MADISON )

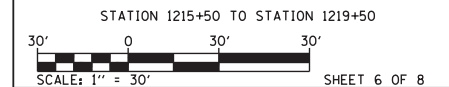
I, GREGORY S. McVICAR, AN ILLINOIS PROFESSIONAL LAND SURVEYOR, CERTIFY THAT I HAVE SURVEYED THE PLAT OF HIGHWAY SHOWN HEREON AND THAT THIS PROFESSIONAL SERVICE CONFORMS TO THE CURRENT ILLINOIS MINIMUM STANDARDS FOR A BOUNDARY SURVEY FOR THE PROPOSED PARCEL TO BE ACQUIRED BY THE STATE OF ILLINOIS, DEPARTMENT OF TRANSPORTATION, SHOWN HEREON.

DATED \_\_\_\_\_  
GREGORY S. McVICAR, PLS NO. 3512  
LICENSE EXPIRATION DATE: 11/30/2018



**SHERRILL ASSOCIATES, INC.**  
Engineers - Surveyors - Planners  
Professional Design Firm Number 184-001238  
316 North Main Street, Tel. 618-656-9251  
Edwardsville, IL 62025, Fax 618-656-9496

ILLINOIS DEPARTMENT OF TRANSPORTATION  
PLAT OF HIGHWAYS  
FAP ROUTE 861A (IL 150 / IL 4)  
SECTION 110-IRS-3  
RANDOLPH COUNTY  
JOB NO. R-98-002-17



ILLINOIS DEPARTMENT OF TRANSPORTATION  
DIVISION OF HIGHWAYS/REGION 5/DISTRICT 8  
1102 EASTPORT PLAZA DRIVE  
COLLINGSVILLE, ILLINOIS 62234-6198

F.A. RTE.	SECTION	COUNTY	TOTAL SHEETS	SHEET NO.
861A	110-IRS-3	RANDOLPH	31	24

COMPLETION DATE OF FIELD WORK PERFORMED \_\_\_\_\_  
LAND SURVEY: MARCH, 2016 ROW STAKING: \_\_\_\_\_  
CONTRACT NO. 76H47  
FED. ROAD DIST. NO. - ILLINOIS FED. AID PROJECT

PARCEL NO.	OWNER	TOTAL HOLDING ACRES	FEE SIMPLE ACQUISITION			REMAINDER ACRES	EASEMENTS		PERMANENT TAX NUMBER	PROPERTY ACQUIRED BY
			ACRES	SQ. FT.	ACRES		PE = PERMANENT TE = TEMPORARY	EASEMENT PURPOSE		
8702021	INEZ FIENE TITLE REPORT NO. CH-700.0	0.1178	0.0018	80	0.1160	0.0004	20	SIDEWALK CONSTRUCTION & GRADING	17-010-004-00 (15-16-181-014)	



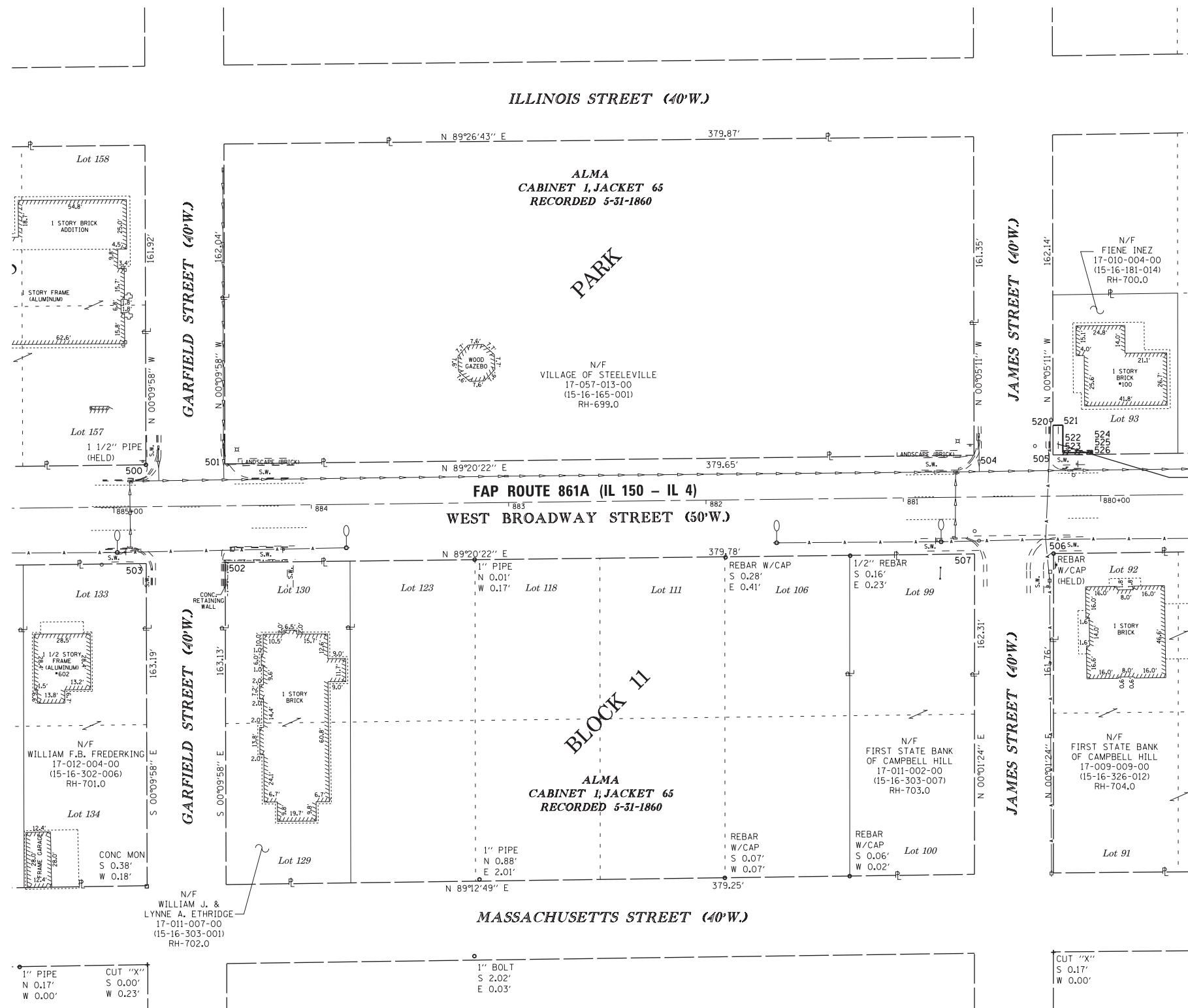
PART OF THE SW 1/4 AND THE NW 1/4 OF SEC 16, T 6 S, R 5 W, OF THE 3RD PM, RANDOLPH COUNTY



SPACE RESERVED FOR RECORDING OFFICER

SEE LEGENDS, TOPOGRAPHIC STATEMENT, SURVEYORS NOTE(S) AND BASIS OF COORDINATES & BEARINGS STATEMENT ON SHEET 2

COORDINATE TABLE				
POINT NO.	STATION	OFFSET	NORTHING	EASTING
500	884+83.55	21.20 RT..	488439.2041	2441277.2067
501	884+43.55	21.23 RT.	488439.6921	2441317.2054
502	884+43.99	28.77 LT.	488389.6904	2441317.3505
503	884+83.99	28.80 LT.	488389.2023	2441277.3518
504	880+63.90	21.18 RT.	488444.0684	2441696.8340
505	880+23.90	20.88 RT.	488444.2350	2441736.8338
506	880+24.21	29.12 LT.	488394.2344	2441737.1032
507	880+64.21	28.82 LT.	488394.0682	2441697.1031



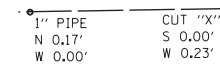
SEE SHEET 6 FOR PARCEL DETAIL AND TABLE

STATE OF ILLINOIS )  
COUNTY OF MADISON )

I, GREGORY S. McVICAR, AN ILLINOIS PROFESSIONAL LAND SURVEYOR, CERTIFY THAT I HAVE SURVEYED THE PLAT OF HIGHWAY SHOWN HEREON AND THAT THIS PROFESSIONAL SERVICE CONFORMS TO THE CURRENT ILLINOIS MINIMUM STANDARDS FOR A BOUNDARY SURVEY FOR THE PROPOSED PARCEL TO BE ACQUIRED BY THE STATE OF ILLINOIS, DEPARTMENT OF TRANSPORTATION, SHOWN HEREON.

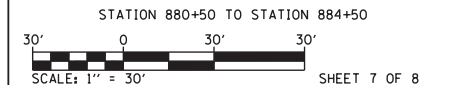
DATED \_\_\_\_\_

GREGORY S. McVICAR, PLS NO. 3512  
LICENSE EXPIRATION DATE: 11/30/2018



**SHERRILL ASSOCIATES, INC.**  
Engineers - Surveyors - Planners  
Professional Design Firm Number 184-001238  
316 North Main Street, Edwardsville, IL 62025  
Tel. 618-656-9251, Fax 618-656-9496

ILLINOIS DEPARTMENT OF TRANSPORTATION  
PLAT OF HIGHWAYS  
FAP ROUTE 861A (IL 150 / IL 4)  
SECTION 110-1RS-3  
RANDOLPH COUNTY  
JOB NO. R-98-002-17



STATION 880+50 TO STATION 884+50  
SHEET 7 OF 8

F.A. RTE.	SECTION	COUNTY	TOTAL SHEETS	SHEET NO.
861A	110-1RS-3	RANDOLPH	31	25

COMPLETION DATE OF FIELD WORK PERFORMED  
LAND SURVEY: MARCH, 2016    ROW STAKING:

CONTRACT NO. 76H47  
FED. ROAD DIST. NO. [ ] ILLINOIS FED. AID PROJECT

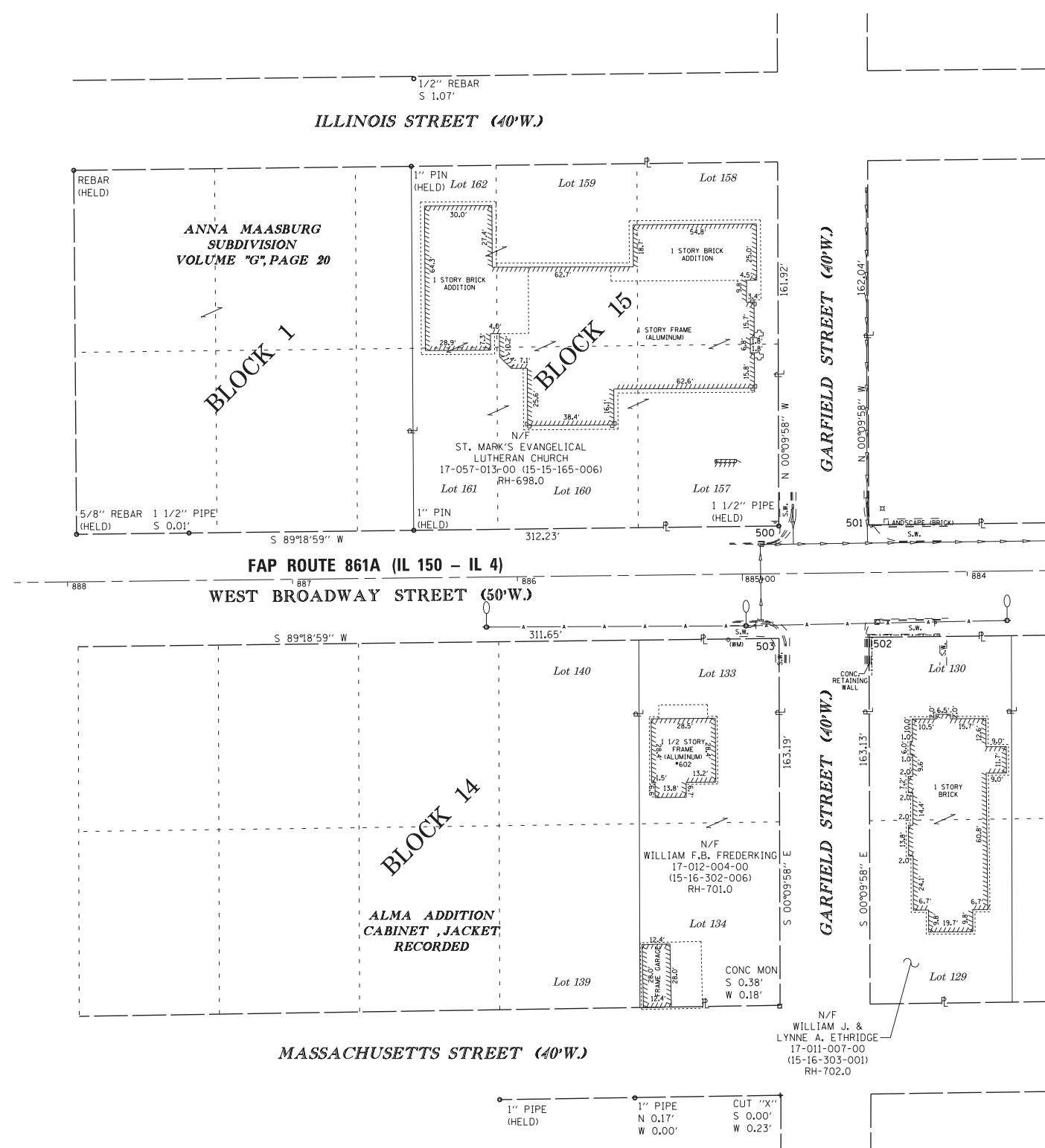
PART OF THE SW 1/4 AND THE NW 1/4 OF SEC 16, T 6 S, R 5 W, OF THE 3RD PM, RANDOLPH COUNTY



SPACE RESERVED FOR RECORDING OFFICER

SEE LEGENDS, TOPOGRAPHIC STATEMENT, SURVEYORS NOTE(S) AND BASIS OF COORDINATES & BEARINGS STATEMENT ON SHEET 2

COORDINATE TABLE				
POINT NO.	STATION	OFFSET	NORTHING	EASTING
500	884+83.55	21.20 RT..	488439.2041	2441277.2067
501	884+43.55	21.23 RT.	488439.6921	2441317.2054
502	884+43.99	28.77 LT.	488389.6904	2441317.3505
503	884+83.99	28.80 LT.	488389.2023	2441277.3518



STATE OF ILLINOIS )  
 ) SS  
 COUNTY OF MADISON )

I, GREGORY S. McVICAR, AN ILLINOIS PROFESSIONAL LAND SURVEYOR, CERTIFY THAT I HAVE SURVEYED THE PLAT OF HIGHWAY SHOWN HEREON AND THAT THIS PROFESSIONAL SERVICE CONFORMS TO THE CURRENT ILLINOIS MINIMUM STANDARDS FOR A BOUNDARY SURVEY FOR THE PROPOSED PARCEL TO BE ACQUIRED BY THE STATE OF ILLINOIS, DEPARTMENT OF TRANSPORTATION, SHOWN HEREON.

DATED \_\_\_\_\_

GREGORY S. McVICAR, PLS NO. 3512  
 LICENSE EXPIRATION DATE: 11/30/2018



**SA SHERRILL ASSOCIATES, INC.**  
 Engineers - Surveyors - Planners  
 Professional Design Firm Number 184-001238  
 316 North Main Street Tel. 618-656-9251  
 Edwardsville, IL 62025 Fax 618-656-9496

ILLINOIS DEPARTMENT OF TRANSPORTATION  
**PLAT OF HIGHWAYS**  
 FAP ROUTE 861A (IL 150 / IL 4)  
 SECTION 110-IRS-3  
 RANDOLPH COUNTY  
 JOB NO. R-98-002-17

STATION 884+50 TO STATION 888+00

SCALE: 1" = 30'

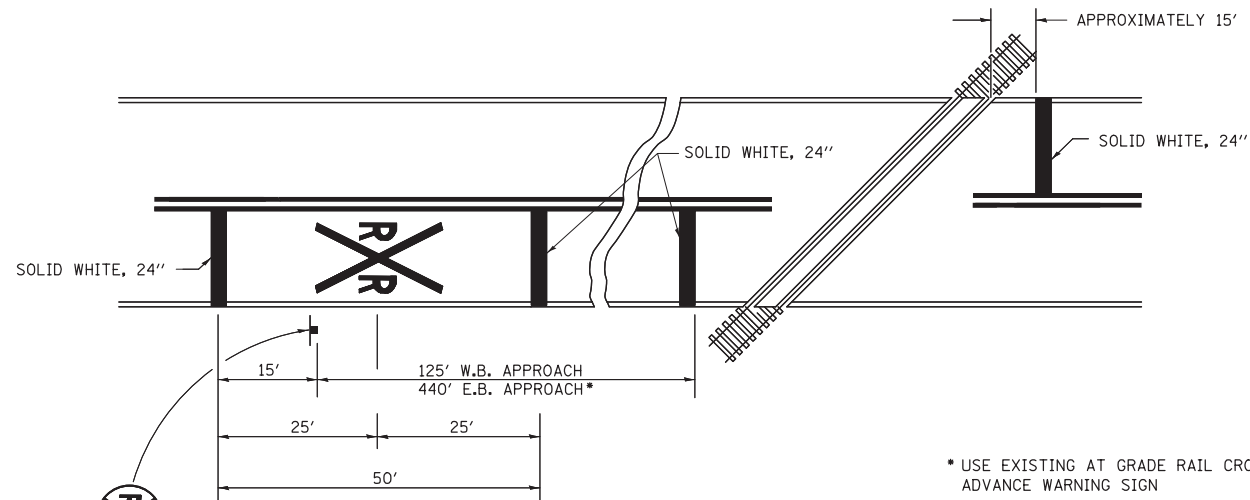
SHEET 8 OF 8

F.A. RTE.	SECTION	COUNTY	TOTAL SHEETS	SHEET NO.
861A	110-IRS-3	RANDOLPH	31	26

ILLINOIS DEPARTMENT OF TRANSPORTATION  
 DIVISION OF HIGHWAYS/REGION 5/DISTRICT 8  
 1102 EASTPORT PLAZA DRIVE  
 COLLINSVILLE, ILLINOIS 62234-6198

COMPLETION DATE OF FIELD WORK PERFORMED  
 LAND SURVEY: MARCH, 2016 ROW STAKING:

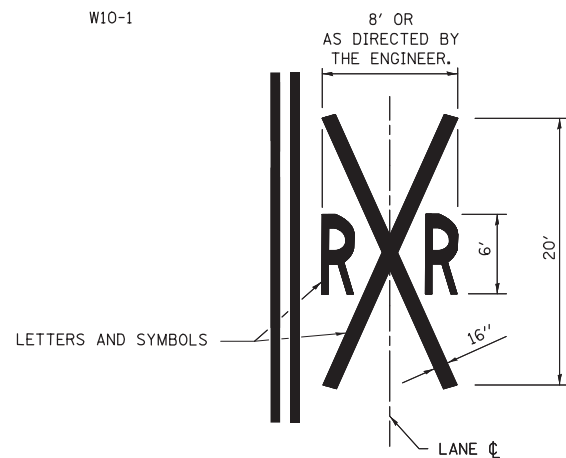
CONTRACT NO. 76H47  
 FED. ROAD DIST. NO. ILLINOIS FED. AID PROJECT



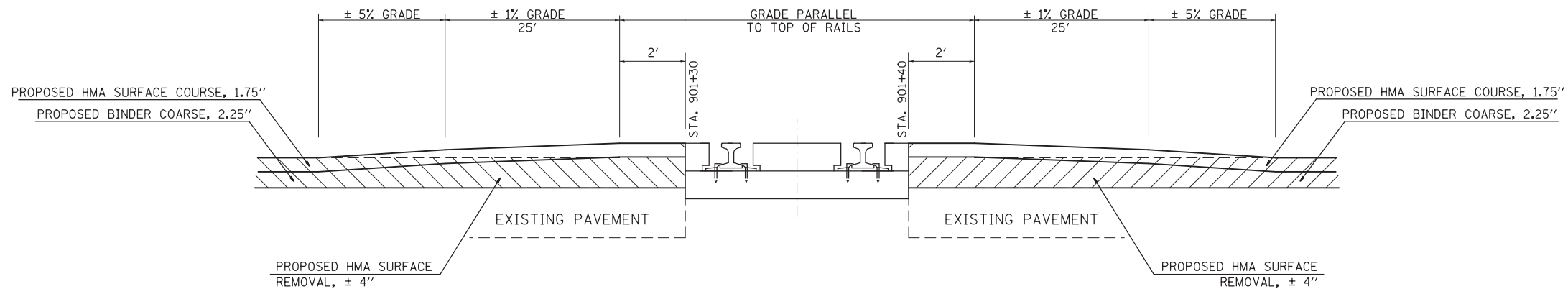
\* USE EXISTING AT GRADE RAIL CROSSING ADVANCE WARNING SIGN

**NOTES**

WHEN THE PAVEMENT MARKING SYMBOL IS USED, A PORTION OF THE SYMBOL SHOULD BE LOCATED DIRECTLY ADJACENT TO THE ADVANCE WARNING SIGN (W10-1) AS PLACED BY TABLE 2C-4, CONDITION B OF THE MUTCD.



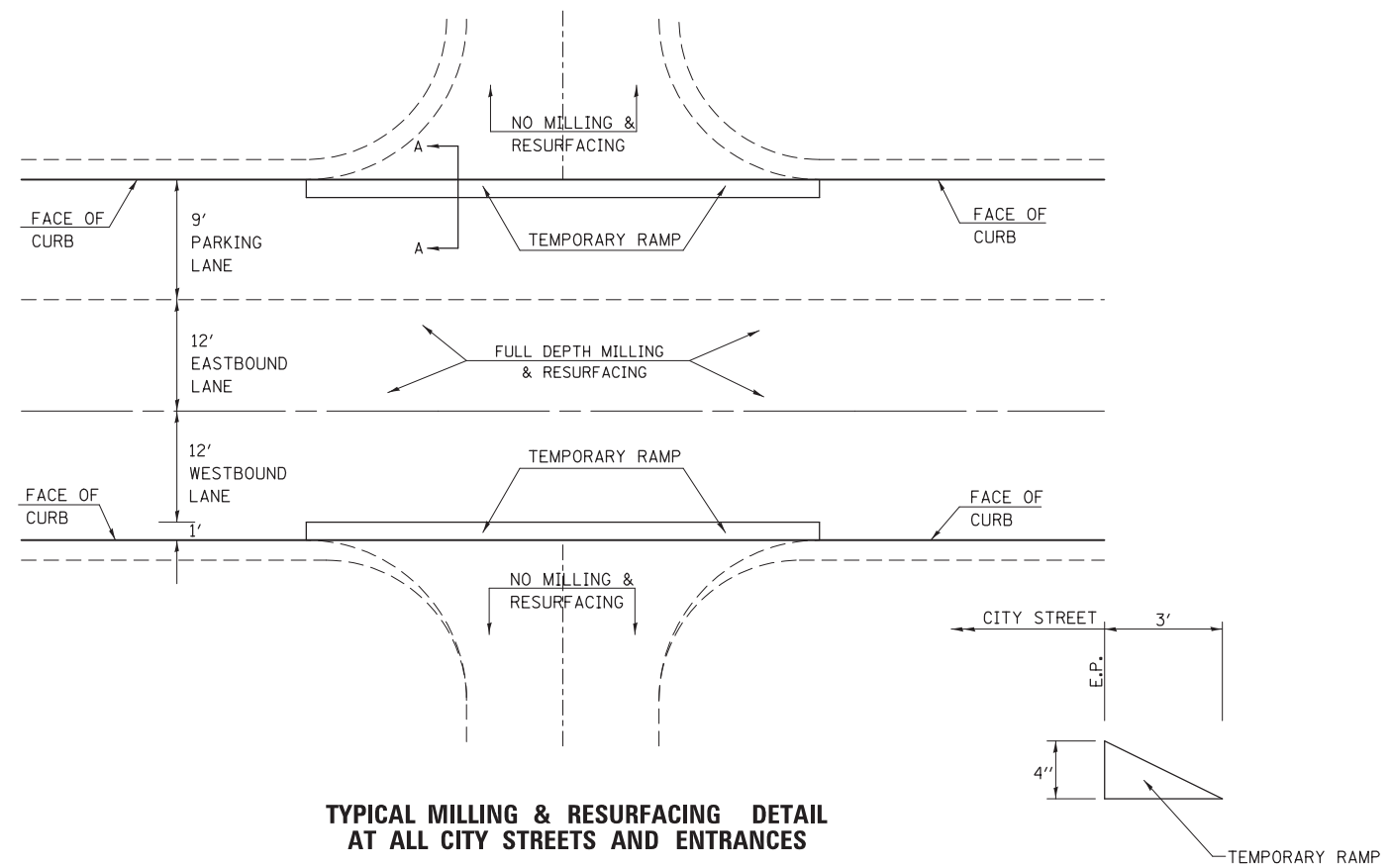
**PAVEMENT MARKINGS AT RAILROAD-HIGHWAY GRADE CROSSING**



**RAILROAD OMISSION DETAIL**

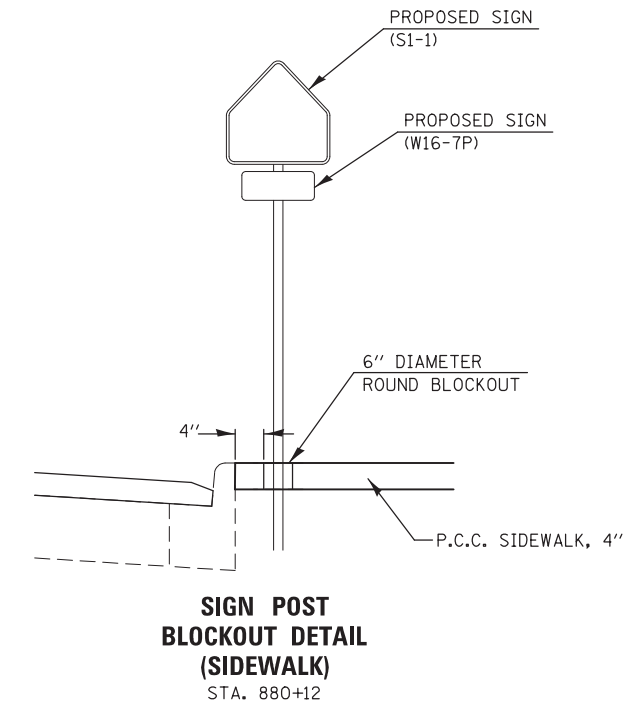
NOT TO SCALE

FILE NAME =	USER NAME = DintelmanJN	DESIGNED -	REVISED -	<b>STATE OF ILLINOIS DEPARTMENT OF TRANSPORTATION</b>	<b>DETAILS</b>			F.A.P. RTE.	SECTION	COUNTY	TOTAL SHEETS	SHEET NO.
pw:\11084EBIDINTEG.illinois.gov\PIWIDOT\Documents\IDOT Offices\District 8\Projects\0875\DRAWING\DATA\EA0sheets\d876h47-sht-plan.dwg	PLANNED BY =	CHECKED -	REVISED -					861A	110-IRS-3	RANDOLPH	31	27
	PLOT SCALE = 100.0000' / 1in.	DATE -	REVISED -		SCALE:			CONTRACT NO. 76H47				
	PLOT DATE = 12/9/2016				SHEET NO. OF SHEETS STA. TO STA.			FED. ROAD DIST. NO. ILLINOIS FED. AID PROJECT				



**TYPICAL MILLING & RESURFACING DETAIL  
AT ALL CITY STREETS AND ENTRANCES**

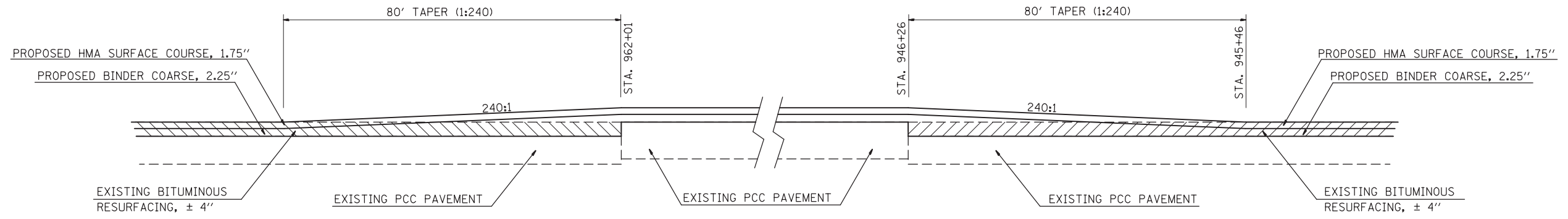
SECTION A-A



**SIGN POST  
BLOCKOUT DETAIL  
(SIDEWALK)  
STA. 880+12**

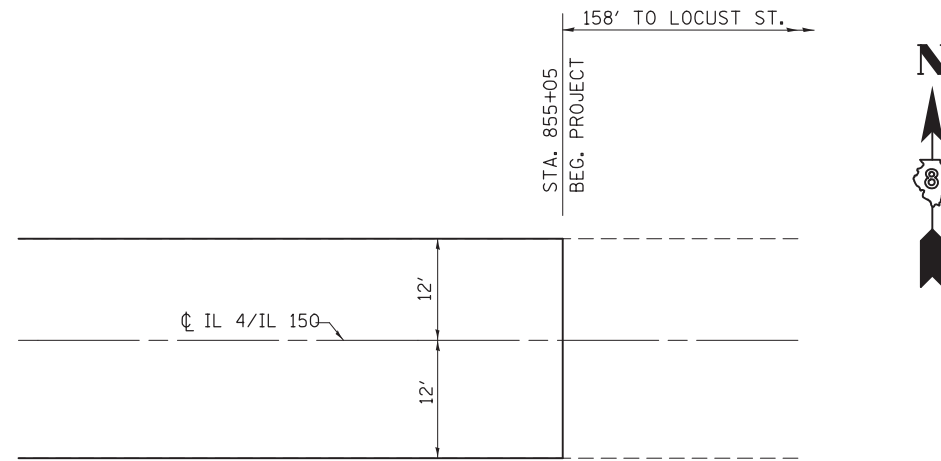
**NOT TO SCALE**

FILE NAME =	USER NAME = DintelmanJN	DESIGNED -	REVISED -	<b>STATE OF ILLINOIS DEPARTMENT OF TRANSPORTATION</b>	<b>DETAILS</b>			F.A.P. RTE.	SECTION	COUNTY	TOTAL SHEETS	SHEET NO.
pw:\IL\084EBIDINTEG.illinois.gov\PIWIDOT\Documents\IDOT Offices\District 8\Projects\0875\DRAWING\DATA\EA0\sheets\d876h47-sht-plan.dwg	PLOT SCALE = 100.0000' / in.	CHECKED -	REVISED -					861A	110-IRS-3	RANDOLPH	31	28
	PLOT DATE = 12/9/2016	DATE -	REVISED -		SCALE: SHEET NO. OF SHEETS STA. TO STA.			FED. ROAD DIST. NO. ILLINOIS FED. AID PROJECT				
								<b>CONTRACT NO. 76H47</b>				

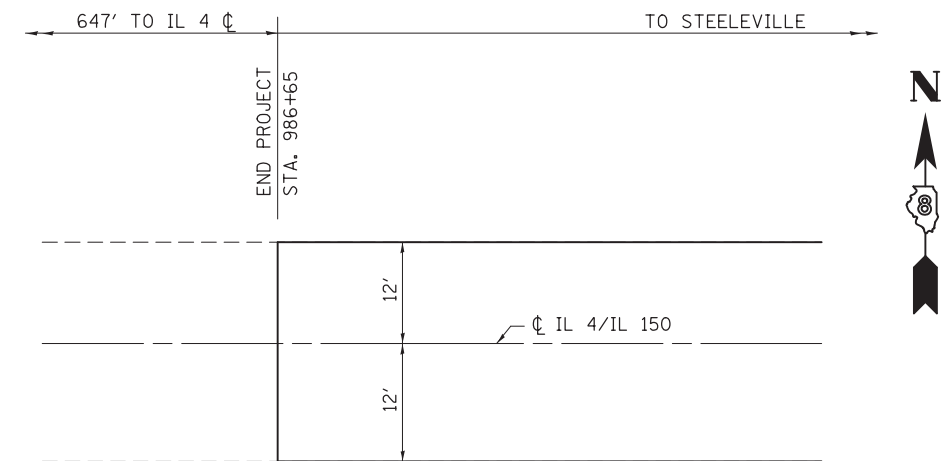


**TRANSITION DETAIL**  
ELEVATION VIEW

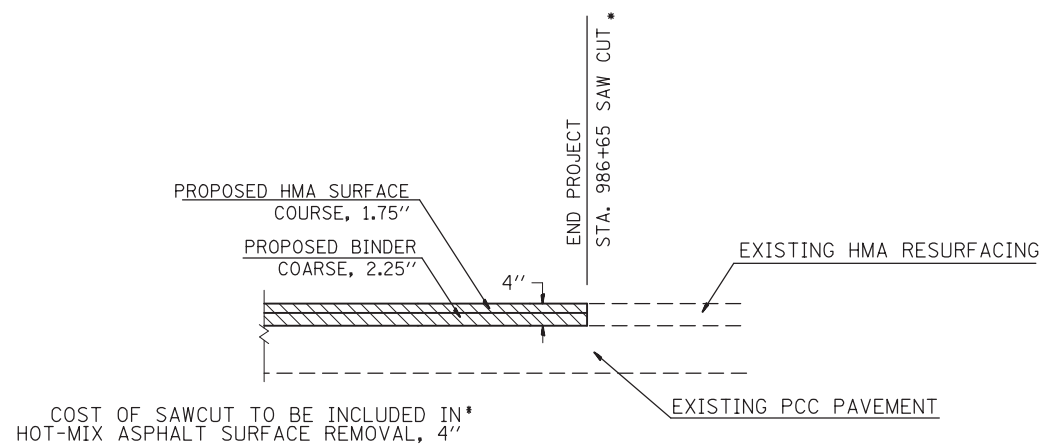
NOT TO SCALE



**BEG. PROJECT DETAIL**  
PLAN VIEW

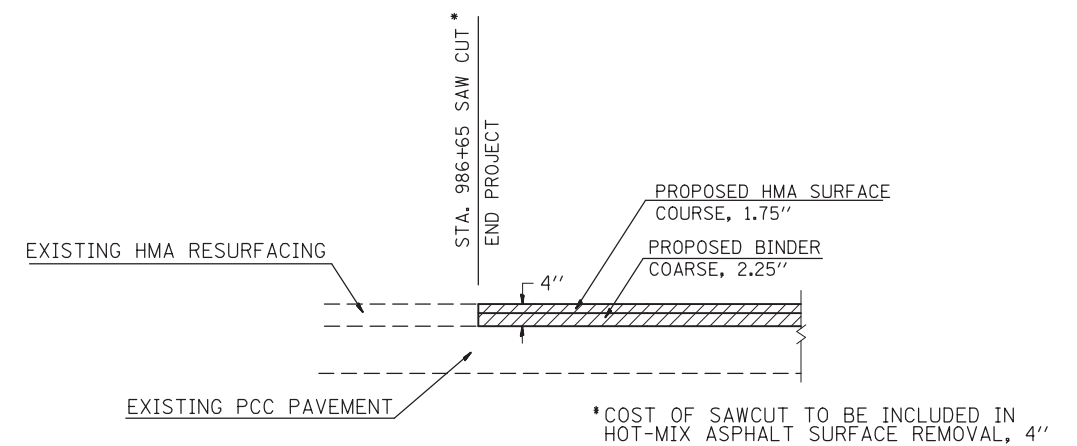


**END PROJECT DETAIL**  
PLAN VIEW



**JOINT DETAIL**  
ELEVATION VIEW

NOT TO SCALE



**JOINT DETAIL**  
ELEVATION VIEW

NOT TO SCALE

FILE NAME =	USER NAME = DintelmanJN	DESIGNED -	REVISED -
pw:\IL084EBIDINTEG.illinois.gov\PIWIDOT\Documents\IDOT Offices\District 8\Projects\0876\DRAWING\DATA\EA0\Sheets\d876h47-sht-plan.dwg		DRAWN -	REVISED -
	PLOT SCALE = 100.0000' / in.	CHECKED -	REVISED -
	PLOT DATE = 12/9/2016	DATE -	REVISED -

STATE OF ILLINOIS  
DEPARTMENT OF TRANSPORTATION

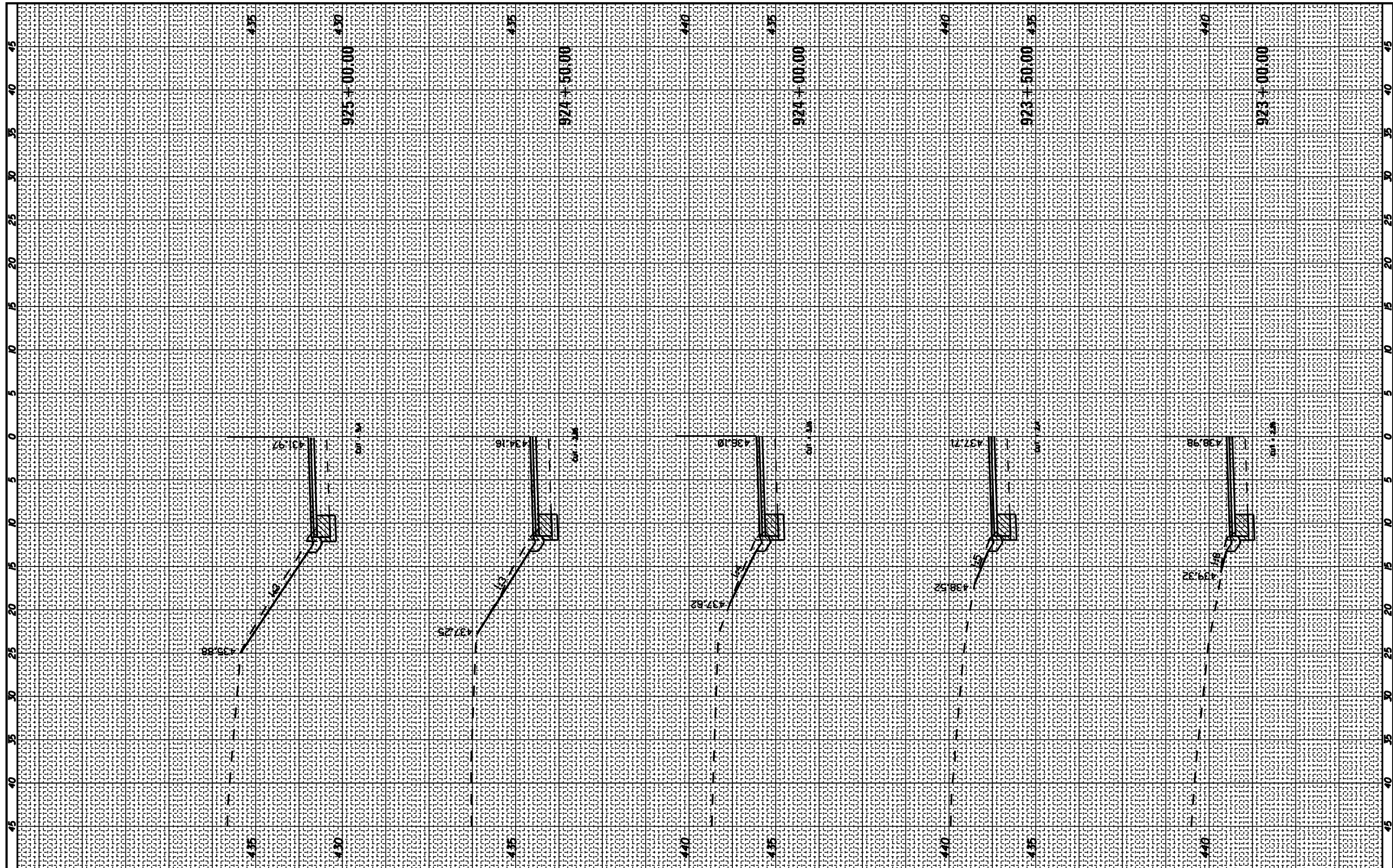
DETAILS

SCALE: SHEET NO. OF SHEETS STA. TO STA.

F.A.P. RTE.	SECTION	COUNTY	TOTAL SHEETS	SHEET NO.
861A	110-1RS-3	RANDOLPH	31	29
CONTRACT NO. 76H47				
FED. ROAD DIST. NO. ILLINOIS FED. AID PROJECT				

FINAL SURVEY NO.	SURVEYED	DATE
	PLOTTED	
	TEMPLATE	
	AREAS CHECKED	

ORIGINAL SURVEY NO.	SURVEYED	DATE
	PLOTTED	
	TEMPLATE	
	AREAS CHECKED	



FILE NAME = \\IL084EBIDINTEG\Illinois.gov\PIWIDOT\Documents\DOT Offices\District 8\Projects\0876H47\CAD\DRAWINGS\0876H47-sht-ssht.dgn  
 #MODELNAME#

USER NAME = DintelmanJN  
 DESIGNED -  
 CHECKED -  
 DATE - 12/9/2016

REVISED -  
 REVISED -  
 REVISED -

STATE OF ILLINOIS  
 DEPARTMENT OF TRANSPORTATION

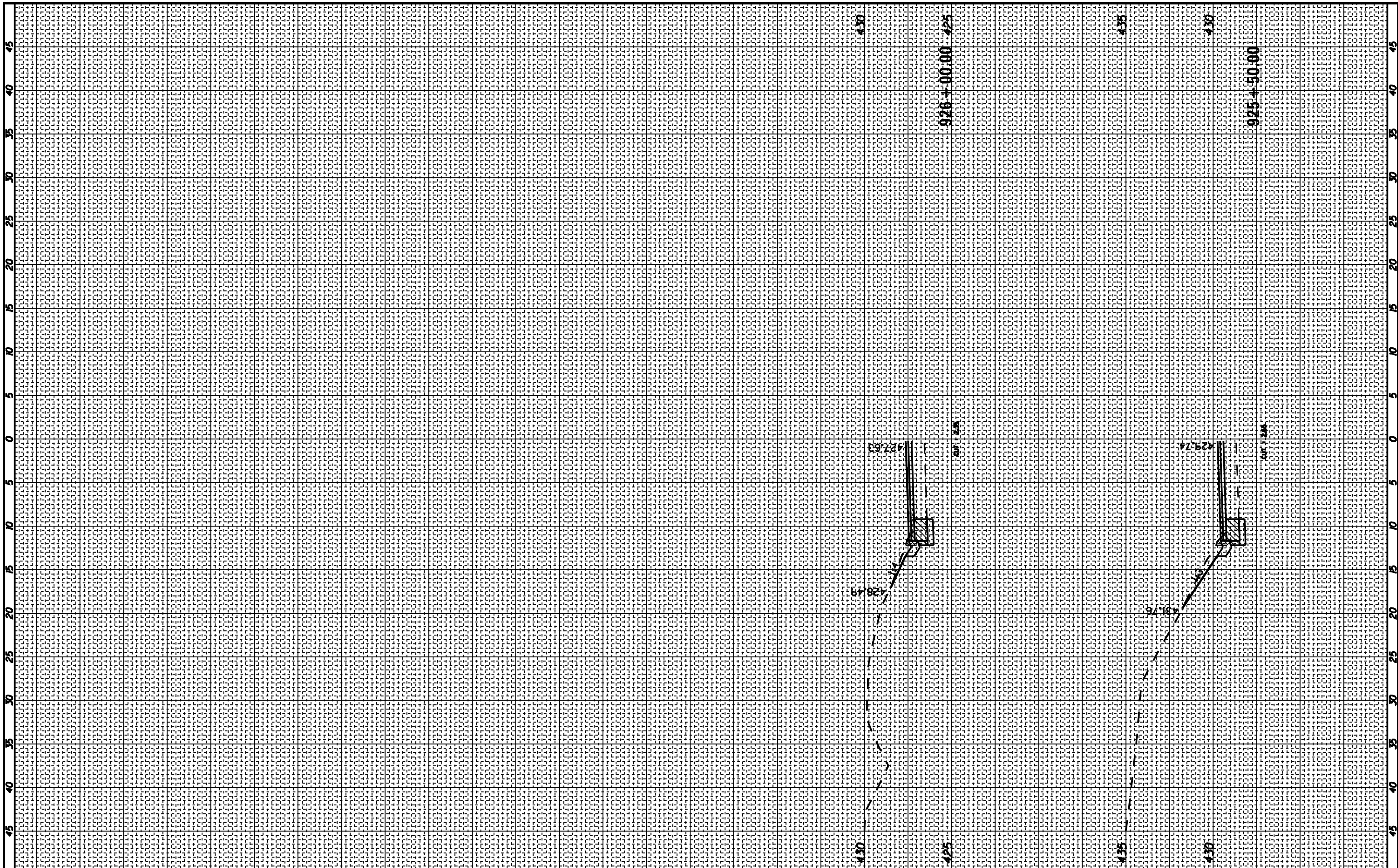
CROSS SECTION SHEETS  
 SCALE: \_\_\_\_\_ SHEET \_\_\_\_\_ OF \_\_\_\_\_ SHEETS STA. 923+00.00 TO STA. 925+00.00

F.A.P. RTE.	SECTION	COUNTY	TOTAL SHEETS	SHEET NO.
861A	110-IRS-3	RANDOLPH	31	30
CONTRACT NO. 76M47				
ILLINOIS FED. AID PROJECT				



FINAL SURVEY NO.	SURVEYED	DATE
	PLOTTED	
	TEMPLATE	
	AREAS CHECKED	

ORIGINAL SURVEY NO.	SURVEYED	DATE
	PLOTTED	
	TEMPLATE	
	AREAS CHECKED	



FILE NAME =  
 USER NAME = DintelmanJN  
 PLOT SCALE = 10,0000 / in.  
 PLOT DATE = 12/9/2016

DESIGNED -  
 CHECKED -  
 DATE -

REVISED -  
 REVISED -  
 REVISED -  
 REVISED -

**STATE OF ILLINOIS  
 DEPARTMENT OF TRANSPORTATION**

**CROSS SECTION  
 SHEETS**

SCALE: \_\_\_\_\_ SHEET \_\_\_\_\_ OF \_\_\_\_\_ SHEETS STA. 925+50.00 TO STA. 926+00.00

F.A.P. RTE.	SECTION	COUNTY	TOTAL SHEETS	SHEET NO.
861A	110-IRS-3	RANDOLPH	31	31
CONTRACT NO. 76M47				
ILLINOIS FED. AID PROJECT				