

STATE OF ILLINOIS  
DEPARTMENT OF TRANSPORTATION

F.A. RTE.	SECTION	COUNTY	TOTAL SHEETS	SHEET NO.
*	131,82-8RS-1	ST. CLAIR	7	1
		ILLINOIS	CONTRACT NO. 76K08	

\* FAI 64 FRONTAGE RD. 16.19

FOR INDEX OF SHEETS, SEE SHEET NO. 2

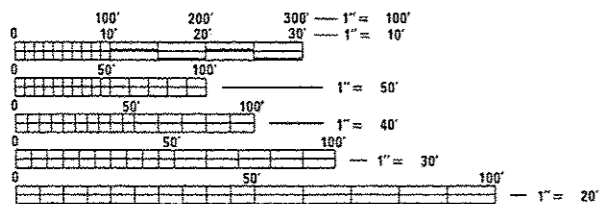
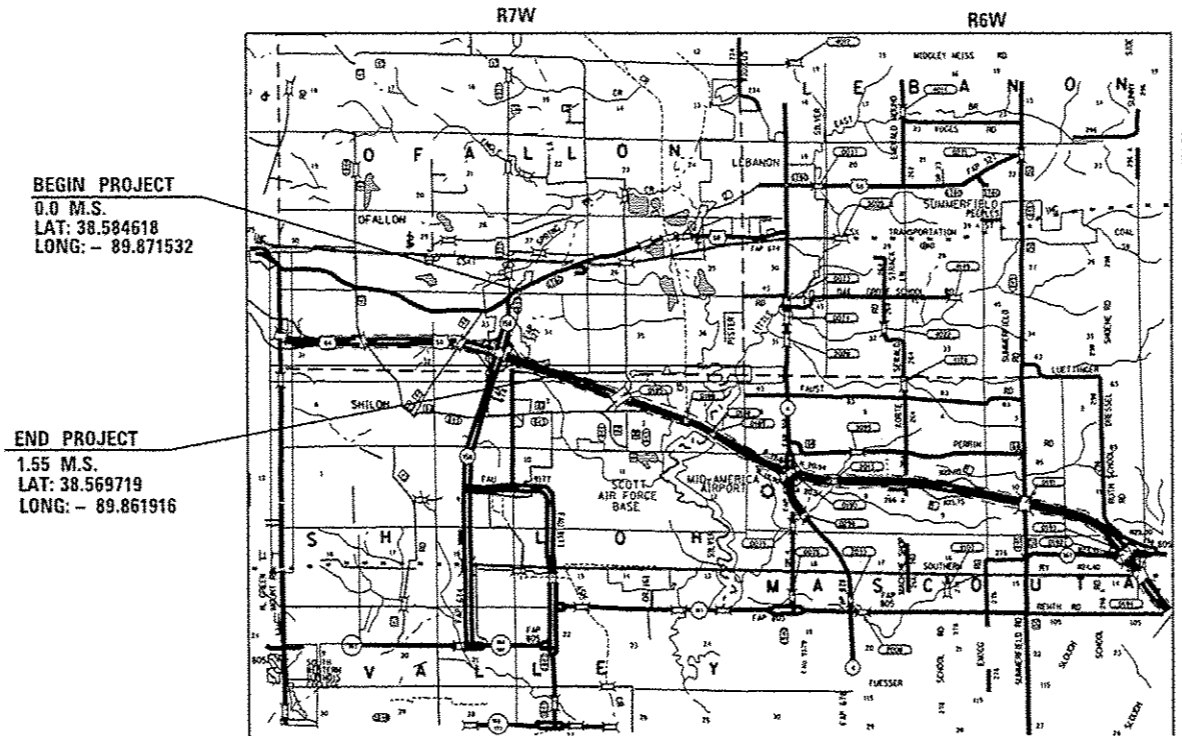
TRAFFIC DATA - SHILOH VALLEY TOWNSHIP RD.

2016 ADT = 50 (ESTIMATED)  
2017 ADT = 50 (ESTIMATED)  
2037 ADT = 75 (ESTIMATED)  
SU = 10% MU = 2%

# PROPOSED HIGHWAY PLANS

FAI 64 FRONTAGE ROAD 16.19  
(SHILOH VALLEY TOWNSHIP ROAD)  
SECTION (31,82-8)RS-1  
CAPE SEAL  
ST. CLAIR COUNTY

C-98-012-17



FULL SIZE PLANS HAVE BEEN PREPARED USING STANDARD ENGINEERING SCALES. REDUCED SIZED PLANS WILL NOT CONFORM TO STANDARD SCALES. IN MAKING MEASUREMENTS ON REDUCED PLANS, THE ABOVE SCALES MAY BE USED.

J.U.L.I.E.  
JOINT UTILITY LOCATION INFORMATION FOR EXCAVATION  
1-800-892-0123  
OR 811

GROSS LENGTH = 8,184 FT. = 1.55 MILE  
NET LENGTH = 8,184 FT. = 1.55 MILE  
TOWNSHIPS: OFALLON & SHILOH VALLEY  
NOT TO SCALE

PROJECT ENGINEER: TIM PADGETT (618)346-3325  
PROJECT MANAGER: DIANA MURRAY (618)346-3207

CONTRACT NO. 76K08

STATE OF ILLINOIS  
DEPARTMENT OF TRANSPORTATION

SUBMITTED Dec 2 20 16

Jeffrey L. K... REGIONAL ENGINEER

Jan 27 20 17

Maureen M. Addis, PE, Esq. ENGINEER OF DESIGN AND ENVIRONMENT

Jan 27 20 17

Amelle A. ... DIRECTOR OF PROGRAM DEVELOPMENT

PRINTED BY THE AUTHORITY  
OF THE STATE OF ILLINOIS

**INDEX OF SHEETS**

- 1 COVER
- 2 INDEX OF SHEETS, STANDARDS, GENERAL NOTES & COMMITMENTS
- 3 SUMMARY OF QUANTITIES
- 4 LOCATION MAP
- 5 TYPICAL SECTIONS
- 6 SCHEDULE OF QUANTITIES
- 7 SURVEY MONUMENT LOCATION

**STANDARDS**

- 000001-06 STANDARD SYMBOLS, ABBREVIATIONS AND PATTERNS
- 001001-02 AREAS OF REINFORCEMENT BARS
- 001006 DECIMAL OF AN INCH AND OF A FOOT
- 701011-04 OFF-RD MOVING OPERATIONS, 2L, 2W, DAY ONLY
- 701201-04 LANE CLOSURE, 2L, 2W, DAY ONLY, FOR SPEEDS > 45 MPH
- 701301-04 LANE CLOSURE, 2L, 2W SHORT TERM OPERATIONS
- 701306-03 LANE CLOSURE, 2L, 2W, SLOW MOVING OPERATIONS DAY ONLY, FOR SPEEDS > 45 MPH
- 701311-03 LANE CLOSURE, 2L, 2W, MOVING OPERATIONS - DAY ONLY
- 701336-06 LANE CLOSURE, 2L, 2W WORK AREAS IN SERIES, FOR SPEEDS > 45 MPH
- 701901-06 TRAFFIC CONTROL DEVICES
- 780001-05 TYPICAL PAVEMENT MARKINGS
- 781001-04 TYPICAL APPLICATIONS RAISED REFLECTIVE PAVEMENT MARKERS

**GENERAL NOTES**

1. ILLINOIS STATE LAW REQUIRES A 48-HOUR NOTICE TO BE GIVEN TO ALL UTILITIES WITHIN THE PROJECT AREA BEFORE DIGGING. FIELD MARKING OF FACILITIES MAY BE OBTAINED BY CONTACTING J.U.L.I.E. OR FOR NON-MEMBERS, THE UTILITY COMPANY DIRECTLY. AGENCIES KNOWN TO HAVE FACILITIES WITHIN THE PROJECT AREA ARE AS FOLLOWS:
 

UTILITY	ABOVE GROUND	BELOW GROUND
*AMEREN ILLINOIS (GAS & ELECTRIC)	X	X
*AT & T ILLINOIS	X	X
*CENTURYLINK, INC.	X	X
*CHARTER COMMUNICATIONS, INC.	X	X
*CITY OF O'FALLON		X
*VILLAGE OF SHILOH		X
- MEMBERS OF J.U.L.I.E. (800-892-0123 OR 811) ARE INDICATED BY AN \*. NON-JULIE MEMBERS MUST BE NOTIFIED INDIVIDUALLY.
2. THE CONTRACTOR AND THE ENGINEER SHALL BE AWARE THAT NO SURVEY WAS PERFORMED FOR THIS PROJECT, THE STATIONING, TOPOGRAPHY AND QUANTITIES SHOWN ON THESE PLANS WERE CREATED USING MICROFILM AND FIELD MEASUREMENTS. ALL SHALL BE ASSUMED TO BE APPROXIMATE. THE CONTRACTOR SHALL VERIFY DIMENSIONS AND CONDITIONS IN THE FIELD PRIOR TO CONSTRUCTION AND ORDERING OF MATERIALS.
3. PROPOSED PAVEMENT MARKING SHALL BE PLACED IN THE SAME LOCATION AS EXISTING AS DIRECTED BY THE ENGINEER.
4. THE AGGREGATE GRADATION FOR THE A-1 SURFACE TREATMENT SHALL BE CA16 OR CM16. THE AGGREGATES FOR THE MICRO-SURFACING SHALL MEET THE FRICTION AGGREGATE REQUIREMENTS FOR MIXTURE C IN ARTICLE 1004.03(a).
5. "ROAD CONSTRUCTION AHEAD" SIGNS SHALL BE PLACED AT THE BEGINNING AND END OF THE PROJECT PLUS ALL INTERSECTING SIDE ROADS AND WILL BE INCLUDED IN THE TRAFFIC CONTROL PAY ITEMS. ALL CONSTRUCTION SIGNS SHALL BE 48" X 48" FLUORESCENT ORANGE.
6. THE CONTRACTOR SHALL POST THE ROADWAY WITH "LOOSE GRAVEL" AND "SPEED LIMIT 35" SIGNS IN ACCORDANCE WITH APPLICABLE ARTICLES OF DIVISION 700 OF THE STANDARD SPECIFICATIONS. THESE SIGNS SHALL BE PLACED AT THE START OF WORK, NEAR INTERSECTING ROADWAYS AND THEN AT AN AVERAGE SPACING OF 0.5 MILES. THE SIGNS MAY BE REMOVED AS SOON AS THE SWEEPING OPERATION HAS BEEN COMPLETED. THE COST SHALL BE INCLUDED IN THE TRAFFIC CONTROL ITEM.
7. THE CONTRACTOR SHALL POST AND MAINTAIN THE ROADWAY WITH "NO PASSING ZONES NOT STRIPED NEXT MILES" SIGNS UNTIL MARKINGS HAVE BEEN RESTORED IN ACCORDANCE WITH ARTICLE 701.17(C). THE COST SHALL BE INCLUDED IN THE TRAFFIC CONTROL ITEM.

8. NO OVERNIGHT LANE CLOSURES WILL BE PERMITTED.
9. A QUANTITY FOR FIBER MODIFIED ASPHALT CRACK SEALING HAS BEEN ESTIMATED FROM A FIELD REVIEW AND INCLUDED IN THE PLANS FOR USE AT LOCATIONS AS DIRECTED BY THE RESIDENT ENGINEER. THE ACTUAL QUANTITY FOR THESE PAY ITEMS WILL BE DETERMINED DURING CONSTRUCTION.
10. FLAGGERS SHALL BE PRESENT DURING ALL CLOSURE HOURS INCLUDING LUNCH HOUR AND NO ADDITIONAL COMPENSATION SHALL BE ALLOWED.
11. FLAGGERS SHALL BE REQUIRED AT ALL TIMES DURING PATCHING OPERATIONS.
12. ALL TRAFFIC CONTROL DEVICES AS HEREIN SPECIFIED AND ANY ADDITIONAL TRAFFIC CONTROL DEVICES AND FLAGGERS AS DEEMED NECESSARY BY THE RESIDENT ENGINEER SHALL BE INCLUDED IN THE CONTRACT TRAFFIC CONTROL AND PROTECTION PAY ITEMS.
13. THE PAVEMENT WIDTH VARIES AND QUANTITIES WILL BE PAID ACCORDING TO EXACT WIDTHS AS MEASURED IN THE FIELD.

**COMMITMENTS**

NONE

**MIXTURE REQUIREMENTS**

ROUTE	FAI 64 FRONTAGE RD. 16. 19
SECTION	(31,82-8)RS-1
COUNTY	ST. CLAIR
CONTRACT	76K08

DESCRIPTION:	CAPE SEAL - SHILOH VALLEY TOWNSHIP RD. FRO US 50 TO 0.8 MI WEST OF RIEDER RD.
--------------	---

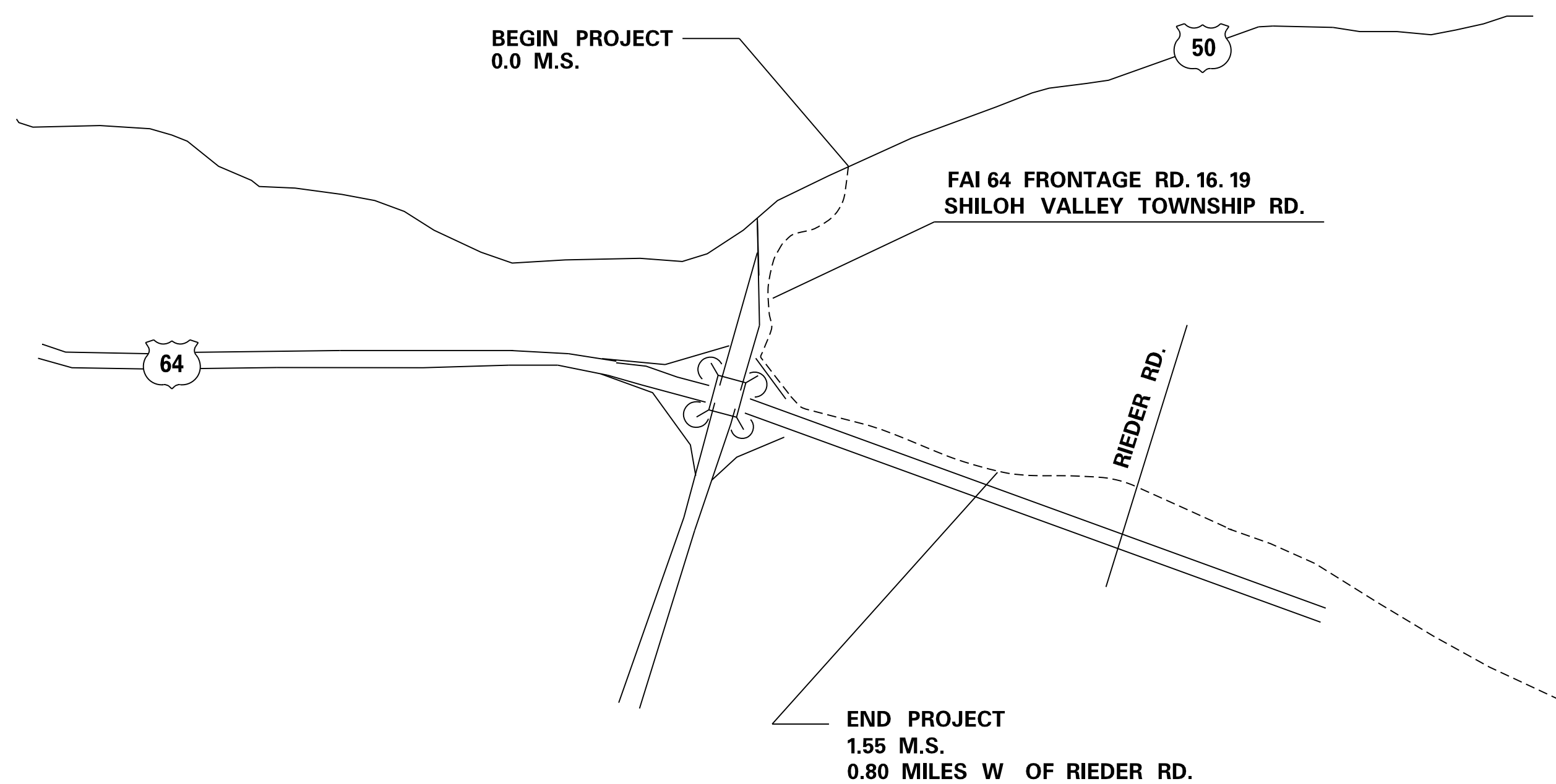
ADT (CONSTRUCTION YR):	50
MUZ:	2
SUZ:	10
20 YR. ESAL'S:	75

MIXTURE USE	PATCHING
AC/PG	PG 64-22
RAP % (MAX)	SEE SPECIAL PROVISION
DESIGN AIR VOIDS	4.0% @ Ndes = 70
MIX COMPOSITION (GRADATION MIXTURE)	IL 9.5
FRICTION AGG	MIXTURE "C"
QUALITY MGMT PROGRAM	QC/QA

PLAN QUANTITIES FOR BITUMINOUS CONCRETE SURFACE COURSE ITEMS ARE CALCULATED USING A UNIT WEIGHT OF 112 LB/SO YD/IN (59.8 KG/SO M/25 MM THICKNESS).

FILE NAME *	USER NAME * murrayda	DESIGNED -	REVISED -	<b>STATE OF ILLINOIS DEPARTMENT OF TRANSPORTATION</b>	<b>INDEX OF SHEETS, STANDARDS, GENERAL NOTES &amp; COMMITMENTS</b>	F.A. RTE.	SECTION	COUNTY	TOTAL SHEETS	SHEET NO.	
Default		CHECKED -	REVISED -					(31,82-8)RS-1	ST. CLAIR	7	2
		DATE -	REVISED -			SCALE: _____ SHEET _____ OF _____ SHEETS		STA. _____ TO STA. _____		CONTRACT NO. 76K08	
						ILLINOIS FED. AID PROJECT					





NOT TO SCALE

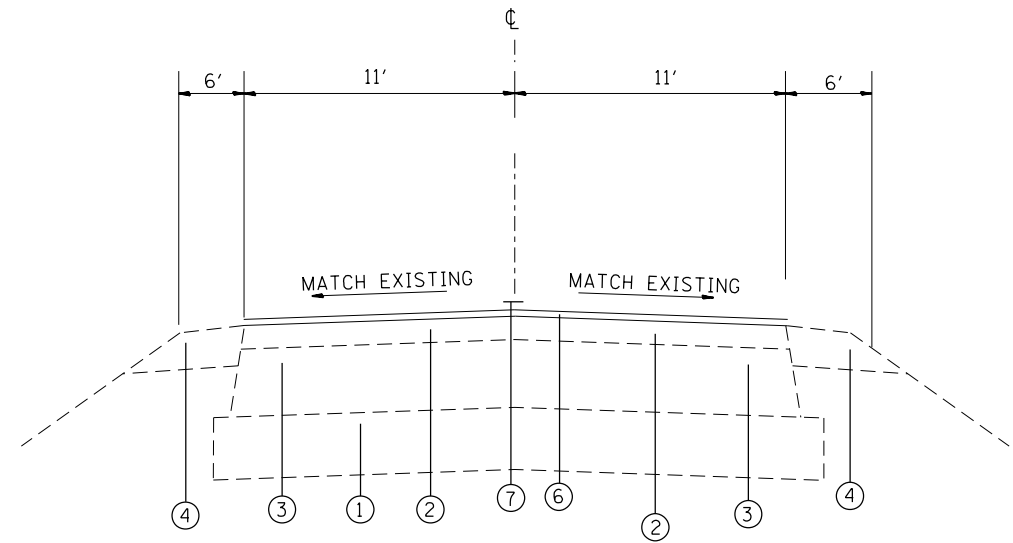
FILE NAME =	USER NAME = murrayda	DESIGNED - _____	REVISED - _____
pw:\IL\084EBIDINTEG.illinois.gov\PI\DOT\Documents\DOT Offices\District 8\Projects\0875\DRAWING\DATA\EA\Sheets\0875-sht-plan.dwg		DRAWN - _____	REVISED - _____
Default	PLOT SCALE = 100.0000' / 1in.	CHECKED - _____	REVISED - _____
	PLOT DATE = 12/6/2016	DATE - _____	REVISED - _____

STATE OF ILLINOIS  
DEPARTMENT OF TRANSPORTATION

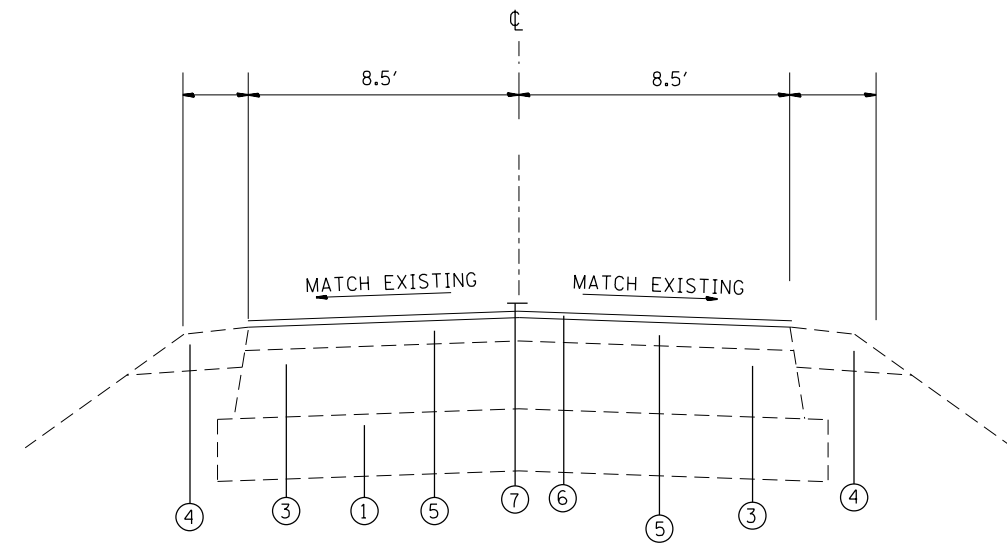
LOCATION MAP

SCALE: \_\_\_\_\_ SHEET \_\_\_\_ OF \_\_\_\_ SHEETS STA. \_\_\_\_\_ TO STA. \_\_\_\_\_

F.A. RTE.	SECTION	COUNTY	TOTAL SHEETS	SHEET NO.
•	(31.82-0)RS-1	ST. CLAIR	7	4
CONTRACT NO. 76K08				
ILLINOIS FED. AID PROJECT				



**TYPICAL SECTION**  
0.00 M.S. TO 0.51 M.S.



**TYPICAL SECTION**  
0.51 M.S. TO 1.55 M.S.

NOTE: THIS TYPICAL IS PROVIDED FOR INFORMATIONAL PURPOSES TO SHOW PAVEMENT WIDTH AS MEASURED IN THE FIELD AND OIL AND CHIP SURFACE. MICROFILM WAS UNAVAILABLE.

**LEGEND**

- ① EXISTING LIME MODIFIED SOIL
- ② EXISTING BITUMINOUS CONCRETE SURFACE COURSE, MIX C, CLASS I, TY 2, 2"
- ③ EXISTING BITUMINOUS CONCRETE BINDER COURSE, TY 2, 7.5"
- ④ EXISTING AGGREGATE SHOULDER, TY A, 8"
- ⑤ EXISTING OIL AND CHIP PAVEMENT
- ⑥ PROPOSED CAPE SEAL
- ⑦ PROPOSED THERMOPLASTIC PAVEMENT MARKING - LINE 4"

FILE NAME =	USER NAME = murrayda	DESIGNED - _____	REVISED - _____	<b>STATE OF ILLINOIS DEPARTMENT OF TRANSPORTATION</b>	<b>TYPICAL SECTIONS</b>			F.A. RTE.	SECTION	COUNTY	TOTAL SHEETS	SHEET NO.
p:\11\084EBIDINTEG.illinois.gov\PWIDOT\Documents\DOT Offices\District 8\Projects\0875\DRAWING\DATA\EA0sheets\0875-sht-plan.dwg		CHECKED - _____	REVISED - _____		•	(31.82-0)RS-1	ST. CLAIR	7	5			
Default	PLOT SCALE = 100.0000' / 1in.	DATE - _____	REVISED - _____		SCALE: _____ SHEET ____ OF ____ SHEETS STA. _____ TO STA. _____			CONTRACT NO. 76K08				
	PLOT DATE = 12/6/2016				ILLINOIS FED. AID PROJECT							

PATCHING SCHEDULE								
DIR	MILE STATION	DIMENSIONS		LONGITUDINAL PARTIAL DEPTH REMOVAL 2"	LONGITUDINAL PARTIAL DEPTH PATCHING	PARTIAL DEPTH REMOVAL, TYPE I, 2"	PARTIAL DEPTH REMOVAL, TYPE II, 2"	PARTIAL DEPTH PATCHING
		LTH	WTH					
		FOOT	FOOT					
SB	0.50	10	6			7		1
NB	0.52	8	12				11	1
SB	0.74	30	6				20	2
SB	0.80	8	8.5				8	1
SB	1.00	8	6			5		1
BOTH	1.20	8	17				15	2
SB	1.30	8	6			5		1
SB	1.32	20	6				13	1
SB	1.34	20	9				20	2
SB	1.53	10	8				9	1
**BOTH	0.51 - 1.55	2746	2	2746	68			
SUBTOTAL				2746	68	17	96	13
10% SUBTOTAL*				275	7	2	10	1
TOTAL				3021	75	19	106	14

\*NOTE: AN ADDITIONAL 10% HAS BEEN ADDED TO THE FINAL PATCHING QUANTITY TO ALLOW FOR WINTER DAMAGE.

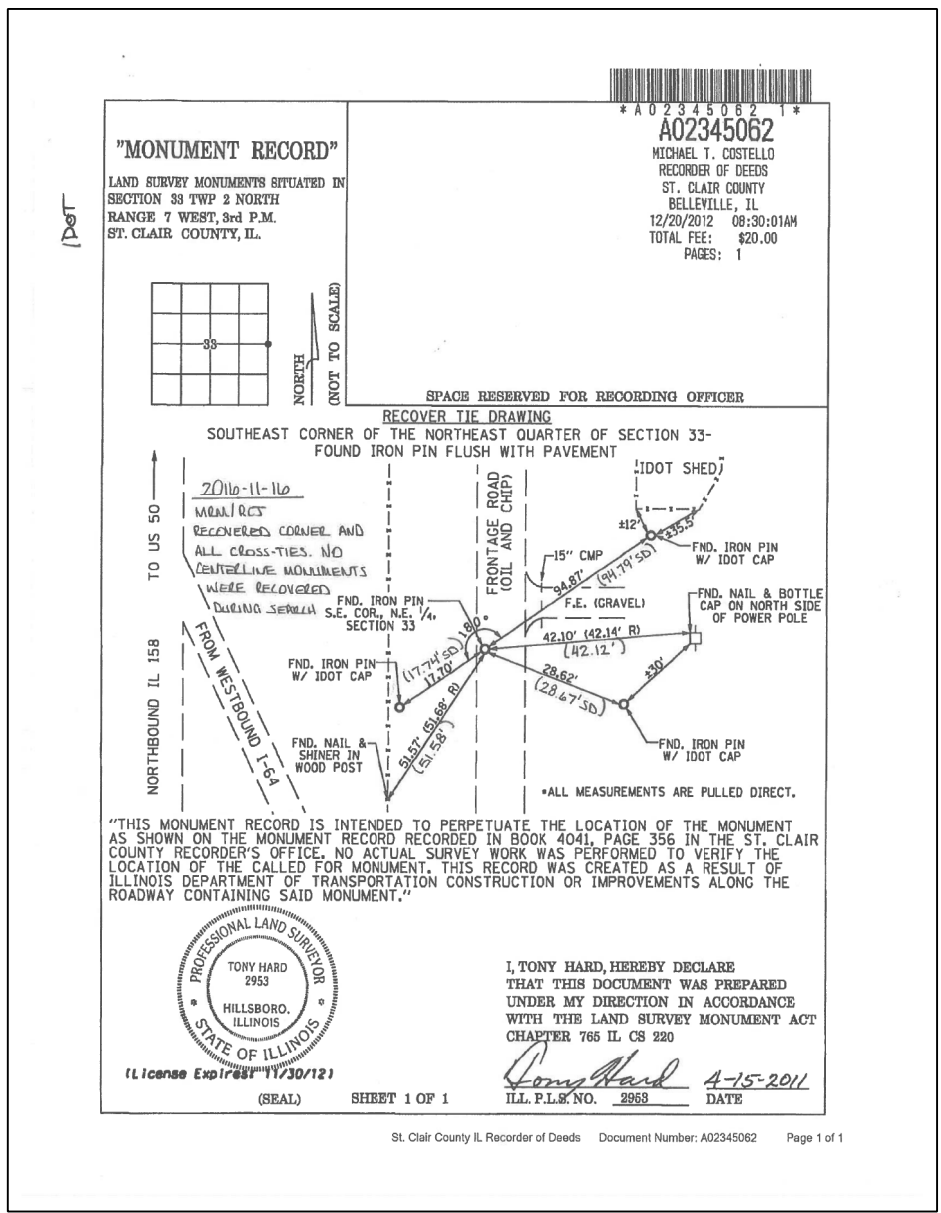
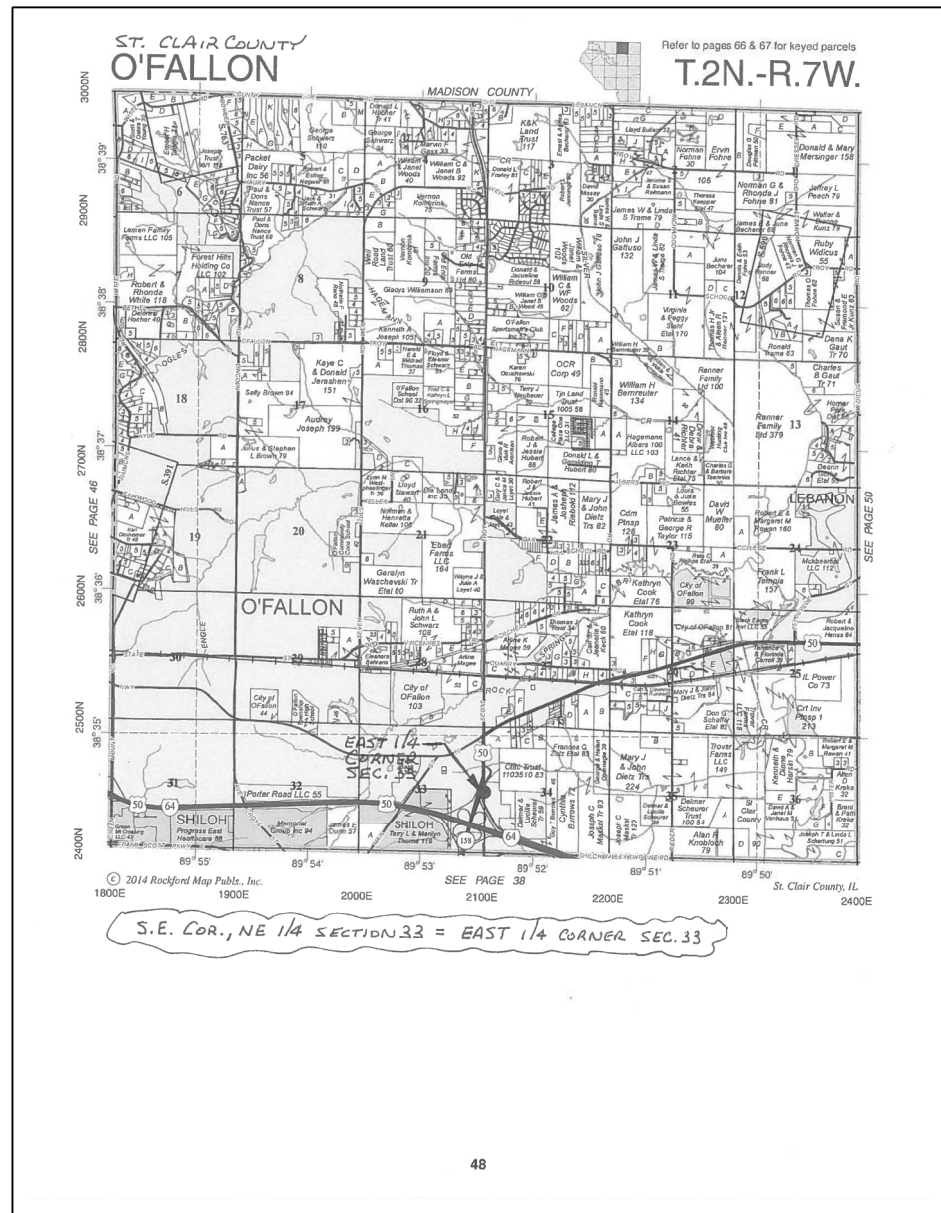
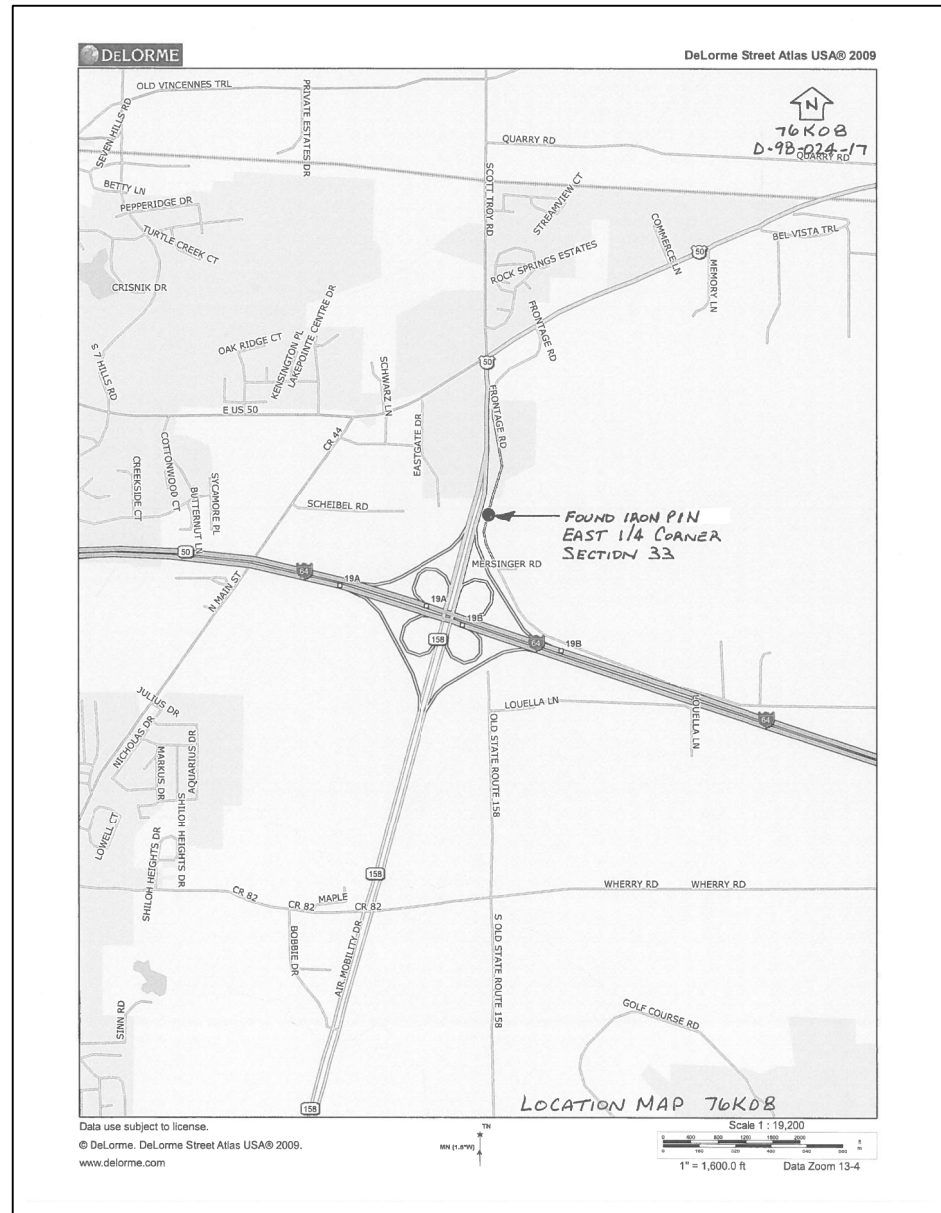
\*\*NOTE: THIS QUANTITY IS BASED ON 1/2 THE DISTANCE AND CAN BE USED ALONG THE EDGELINE OF THE PAVEMENT ON EITHER SIDE AS RECOMMENDED BY THE ENGINEER.

CAPE SEAL SCHEDULE				
LOCATION				CAPE SEAL
MILE STATION	TO	MILE STATION	LENGTH	
			FOOT	SQ YD
0.00	-	0.51	2693	6583
0.51	-	1.55	5491	10372
TOTAL				16955

CRACK SEAL SCHEDULE					
LOCATION				FIBER-MODIFIED ASPHALT CRACK SEALING	
MILE STATION	TO	MILE STATION	LENGTH	LONGITUDINAL	TRANSVERSE
				FOOT	FOOT
0.00	TO	0.51	2693	8079	183
SUBTOTAL				8079	183
10% SUBTOTAL (ADDITIONAL)*				808	18
TOTAL				8887	201
GRAND TOTAL				9088	

NOTE: QUANTITIES FOR CRACKS WERE BASED ON 3 LONGITUDINAL CRACKS AND 1 TRANSVERSE CRACK EVERY 250 FT.

PAVEMENT MARKING SCHEDULE							
MILE STATION TO MILE STATION	LENGTH	RAISED REFLECTIVE PAVEMENT MARKER REMOVAL	TEMPORARY RAISED PAVEMENT MARKERS	AMBER RAISED REFLECTIVE PAVEMENT MARKERS	THERMOPLASTIC PAVEMENT MARKING		
		EACH	EACH	EACH	4" SKIP-DASH YELLOW FOOT		
0.00	-	1.55	8184	102	410	102	2046
TOTAL			102	410	102	2046	



**SECTION CORNERS ALONG RESURFACING PROJECTS**

**THE SECTION CORNERS SHALL BE PRESERVED IN ACCORDANCE WITH THE LAND SURVEY MONUMENTS ACT. (765 ILCS220) LAND SURVEY MONUMENTS ACT.**

FILE NAME =	USER NAME = murraydo	DESIGNED -	REVISED -	<b>STATE OF ILLINOIS DEPARTMENT OF TRANSPORTATION</b>	<b>SURVEY MONUMENT LOCATION</b>	F.A. RTE.	SECTION	COUNTY	TOTAL SHEETS	SHEET NO.
Default	PLOT SCALE = 100.0000' / in.	CHECKED -	REVISED -			•	(31.82-8)RS-1	ST. CLAIR	7	7
	PLOT DATE = 12/6/2016	DATE -	REVISED -			SCALE: _____ SHEET _____ OF _____ SHEETS STA. _____ TO STA. _____		ILLINOIS FED. AID PROJECT		