

03-03-2017 LETTING ITEM 048

STATE OF ILLINOIS  
DEPARTMENT OF TRANSPORTATION  
OFFICE OF HIGHWAYS PROJECT IMPLEMENTATION

**PROPOSED  
HIGHWAY PLANS**

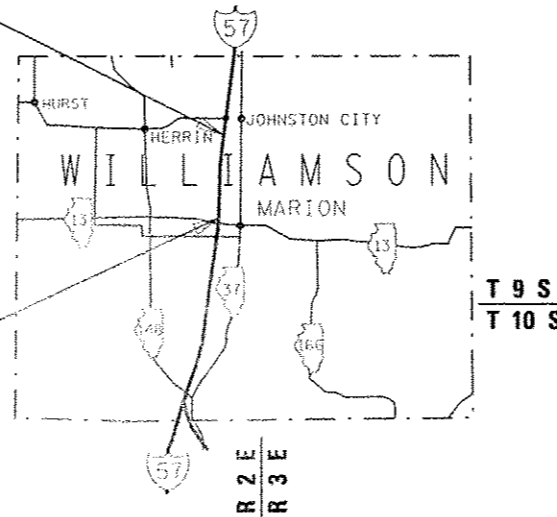
FAI ROUTE 57 (I-57)  
SECTION D9 CABLE GUARDRAIL 2017-1  
CABLE GUARDRAIL INSTALLATION  
HIGH TENSION CABLE MEDIAN BARRIER INSTALLATION  
WILLIAMSON COUNTY

C-99-002-17

ACHSIP-0057(405)

BEGIN PROJECT  
NORTHBOUND INTERSTATE 57  
STA 182+97

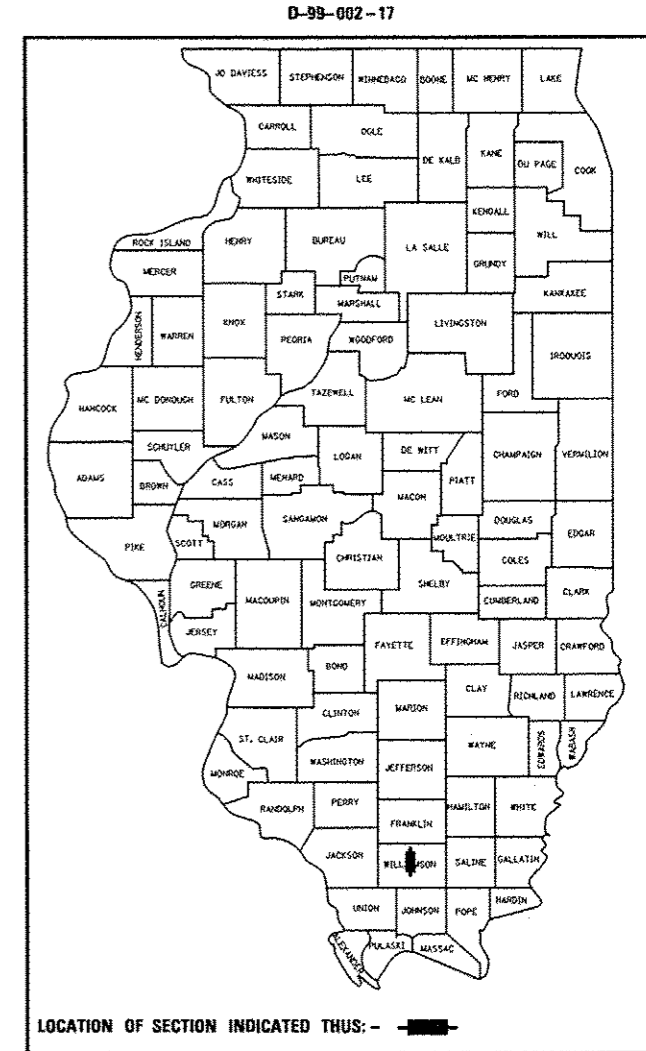
END PROJECT  
NORTHBOUND INTERSTATE 57  
STA 1480+70



STATION EQUATIONS  
STA 209+50.00 BK = STA 209+51.50 AH  
STA 347+05.54 BK = STA 348+47.10 AH  
STA 419+77.93 BK = STA 1461+04.83 AH

GROSS LENGTH = 4.86 MILES  
NET LENGTH = 4.34 MILES

F.A. RTE.	SECTION	COUNTY	TOTAL SHEETS	SHEET NO.
57	D9 CABLE GUARDRAIL 2017-1	WILLIAMSON	12	1
		ILLINOIS		CONTRACT NO. 78552



STATE OF ILLINOIS  
DEPARTMENT OF TRANSPORTATION  
OFFICE OF HIGHWAYS PROJECT IMPLEMENTATION

SUBMITTED Dec 1 20 16

Jeffrey A. Keenan  
REGION FIVE ENGINEER

Jan 27 20 17  
Mameem M. Addis P.E.  
ENGINEER OF DESIGN AND ENVIRONMENT

Jan 27 20 17  
Paula Allen 2  
DIRECTOR OF PROGRAM DEVELOPMENT

FOR INDEX OF SHEETS, SEE SHEET NO. 2

FOR SUMMARY OF QUANTITIES, SEE SHEET NO. 3

DESIGN DESIGNATION : INTERSTATE

POSTED SPEED : 70 MPH

J.U.L.I.E.  
JOINT UTILITY LOCATION INFORMATION FOR EXCAVATION  
1-800-892-0123  
OR 811

PROJECT ENGINEER SUSAN POE  
PROJECT DESIGNER SUSAN POE

CONTRACT NO. 78552

PRINTED BY THE AUTHORITY  
OF THE STATE OF ILLINOIS

# INDEX OF SHEETS

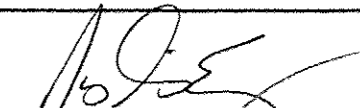

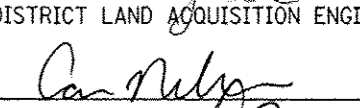


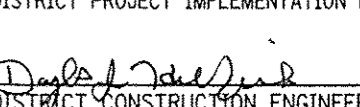

- 1 COVER SHEET
- 2 INDEX OF SHEETS, HIGHWAY STANDARDS
- 3 SUMMARY OF QUANTITIES
- 4 TYPICAL SECTIONS
- 5 CABLE MEDIAN BARRIER SCHEDULE
- 6 - 10 PLAN SHEETS
- 11 TRAFFIC CONTROL THE HILL AVENUE INTERCHANGE
- 12 TRAFFIC CONTROL WEST MAIN STREET INTERCHANGE

# STANDARDS

- 000001-06 STANDARD SYMBOLS, ABBREVIATIONS, AND PATTERNS
- 001006 DECIMAL OF AN INCH AND OF A FOOT
- 701101-05 OFF-RD OPERATIONS, MULTILANE, 15' TO 24" FROM PAVEMENT EDGE
- 701106-02 OFF-RD OPERATIONS, MULTILANE, MORE THAN 15' AWAY
- 701400-09 APPROACH TO LANE CLOSURE, FREEWAY/EXPRESSWAY
- 701406-11 LANE CLOSURE, FREEWAY/EXPRESSWAY, DAY OPERATIONS ONLY
- 701901-06 TRAFFIC CONTROL DEVICES

# GENERAL NOTES

EXISTING PIPE UNDERDRAINS OUTLETS AND DRAINAGE STRUCTURES IN THE MEDIAN SLOPES SHALL BE PRESERVED AND PROTECTED DURING CONSTRUCTION. ANY DAMAGE TO AN UNDERDRAIN OUTLET RESULTING FROM CONSTRUCTION ACTIVITY SHALL BE REPAIRED AT THE CONTRATOR'S EXPENSE.

Prepared By:	
	DISTRICT STUDIES & PLANS ENGINEER
Examined By:	
	DISTRICT LAND ACQUISITION ENGINEER
Examined By:	
	DISTRICT PROGRAM DEVELOPMENT ENGINEER
Examined By:	
	DISTRICT OPERATIONS ENGINEER
Examined By:	
	DISTRICT PROJECT IMPLEMENTATION ENGINEER
Examined By:	
	DISTRICT CONSTRUCTION ENGINEER
Examined By:	
	DISTRICT MATERIALS ENGINEER

FILE NAME *	USER NAME = p00sl	DESIGNED -	REVISED -	STATE OF ILLINOIS DEPARTMENT OF TRANSPORTATION	INDEX OF SHEETS HIGHWAY STANDARDS				F.A.I. RTE.	SECTION	COUNTY	TOTAL SHEETS	SHEET NO.
p:\IL084EBIDINTEG\Illinois.gov\PI00T\Documents\DOT Offices\District 9\Projects\785	DRAWN to\CAD\sheta\sheta.cvr_sog_index.dwg	REVISION	REVISION		57	D9 CABLE GUARDRAIL 2017-1	WILLIAMSON	12	2				
#MODELNAME#	PLOT SCALE = 1000.0000 1/1 in.	CHECKED -	REVISION						CONTRACT NO. 78552				
	PLOT DATE = 12/2/2016	DATE -	REVISION		SCALE:	SHEET	OF	SHEETS	STA.	TO	STA.	ILLINOIS FED. AID PROJECT	

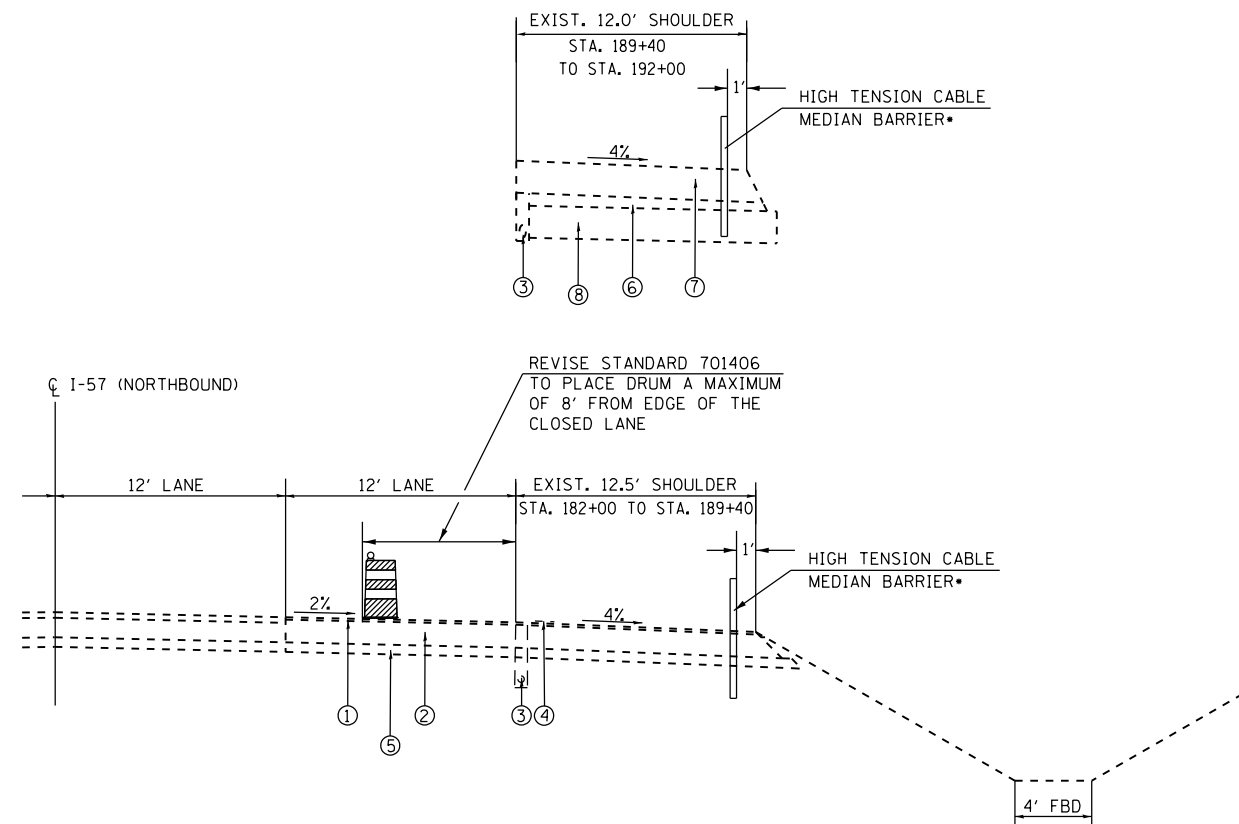
# SUMMARY OF QUANTITIES

COUNTY:	WILLIAMSON
ROUTE:	FAI 57
FUNDING:	90% FEDERAL 10% STATE
LOCATION:	URBAN
	ROADWAY
	0021

CODE NUMBER	ITEM DESCRIPTION	UNIT	
64401100	HIGH TENSION CABLE MEDIAN BARRIER	FOOT	22,932
64401200	HIGH TENSION CABLE MEDIAN BARRIER DEMONSTRATION	EACH	1
64401300	HIGH TENSION CABLE MEDIAN BARRIER TERMINALS	EACH	16
67100100	MOBILIZATION	LSUM	1
70100700	TRAFFIC CONTROL AND PROTECTION, STANDARD 701406	LSUM	1
70106800	CHANGEABLE MESSAGE SIGN	CAL MO	3
X7010218	TRAFFIC CONTROL AND PROTECTION, (SPECIAL)	EACH	2

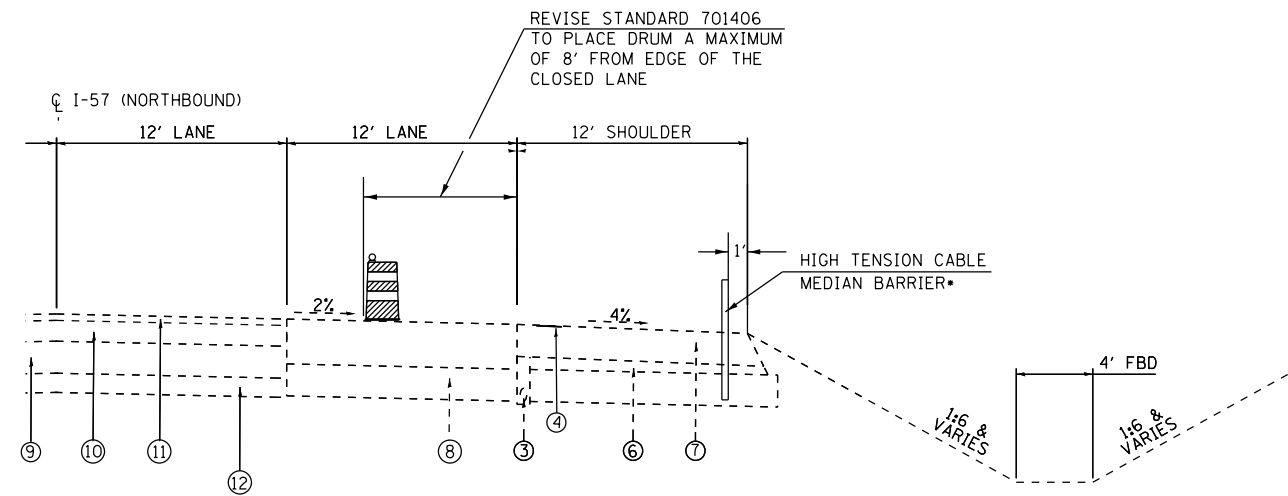
7

TO BE USED:  
STA 182+00 TO 192+00



- ① EXISTING HOT-MIX ASPHALT SURFACE, 1 1/2"
- ② EXISTING HOT-MIX ASPHALT PAVEMENT, 14 1/4"
- ③ EXISTING PIPE UNDERDRAINS, 4"
- ④ EXISTING SHOULDER RUMBLE STRIP
- ⑤ EXISTING AGGREGATE SUB-BASE, 6"
- ⑥ EXISTING SUB-BASE GRANULAR MATERIAL, TYPE C
- ⑦ EXISTING HOT-MIX ASPHALT SHOULDERS, 10"
- ⑧ EXISTING POROUS GRANULAR EMBANKMENT, 10"
- ⑨ EXISTING RUBBLIZED PAVEMENT, 10"
- ⑩ EXISTING HOT-MIX BINDER COURSE, 6 1/2"
- ⑪ EXISTING HOT-MIX SURFACE COURSE, 2"
- ⑫ EXISTING AGGREGATE SUB-BASE 6"

TO BE USED:  
STA 192+00 TO 1485+00



STATION EQUATIONS  
 STA. 209+50.00 (BK) = STA. 209+51.50 (AH)  
 PT STA. 347+05.54 (BK) = PT STA. 348+47.10 (AH)  
 STA. 419+77.93 (BK) = STA. 1461+04.83 (AH)

\*BRIDGE OMISSION  
 STA. 228+11.03 - STA. 229+10.19 (NORTHBOUND)

\* REFER TO STANDARD SPECIFICATIONS SECTION 644  
 AND MANUFACTURERS RECOMMENDATIONS FOR BARRIER  
 AND TERMINAL INSTALLATION.

FILE NAME =	USER NAME = poesi	DESIGNED -	REVISED -
pw:\IL\084EBIDINTEG\illinois.gov\PIDOT\Documents\DOT Offices\District 9\Projects\78552\BRIDGE\CAD\Sheets\shb-typ_sch_tries.gpr\REVISED.dgn			
Default	PLOT SCALE = 10.0000' / in.	CHECKED -	REVISED -
	PLOT DATE = 12/9/2016	DATE -	REVISED -

STATE OF ILLINOIS  
DEPARTMENT OF TRANSPORTATION

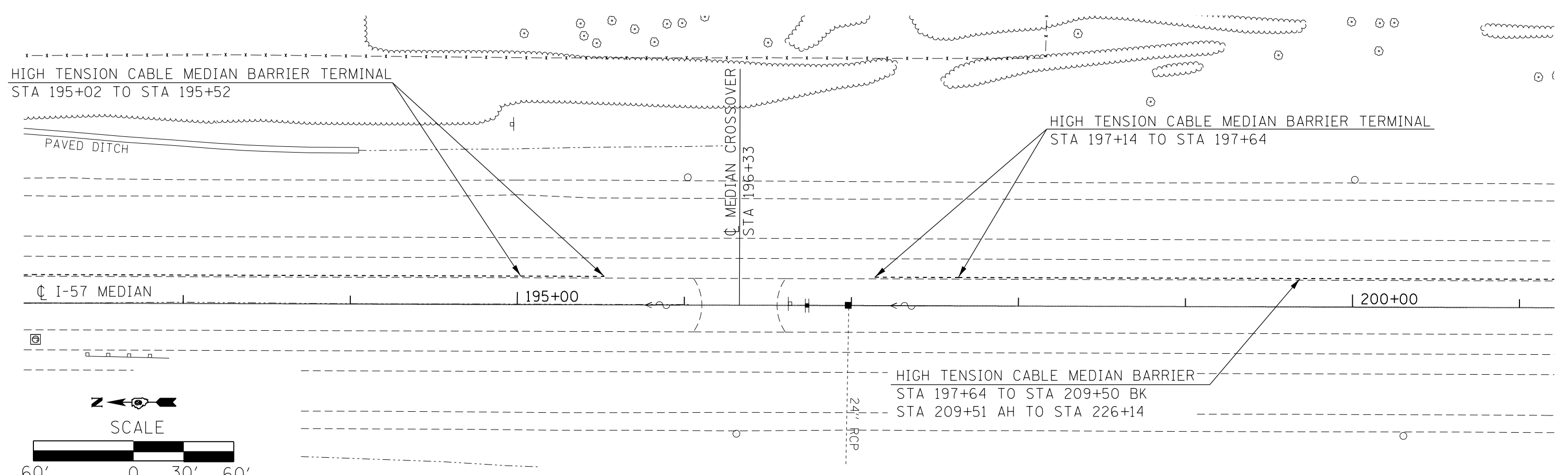
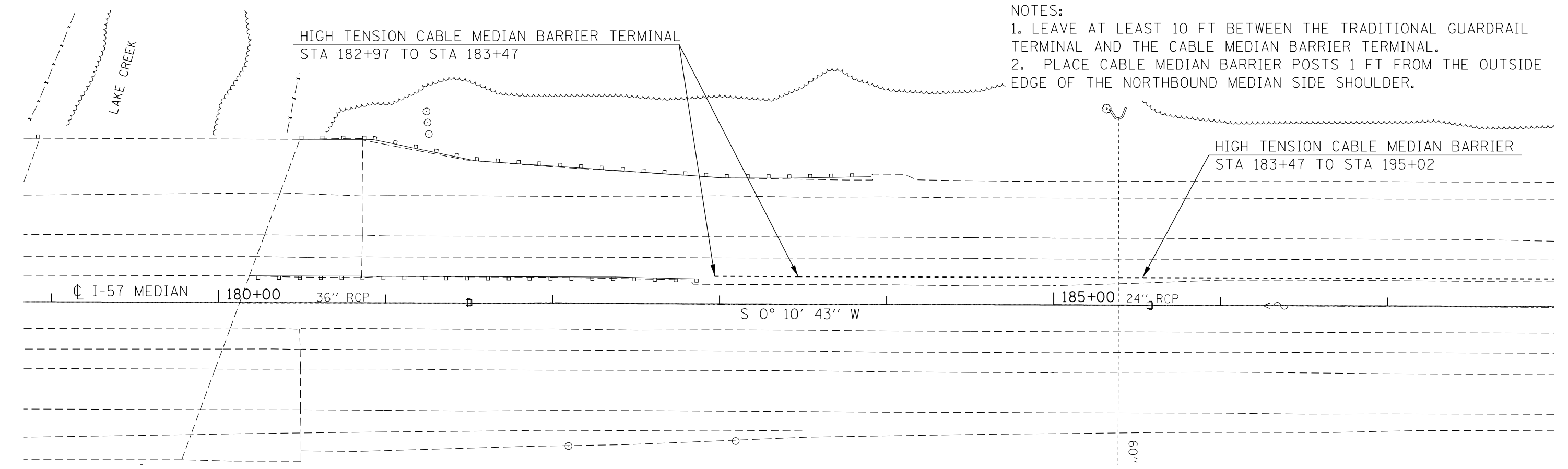
TYPICAL SECTIONS

SCALE: SHEET OF SHEETS STA. TO STA.

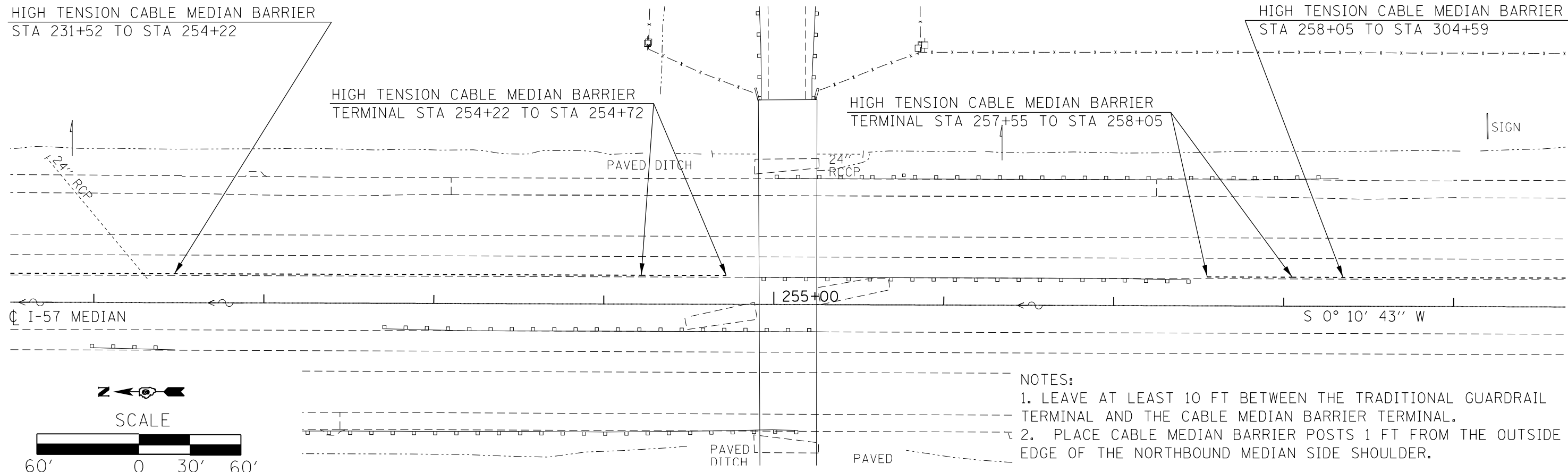
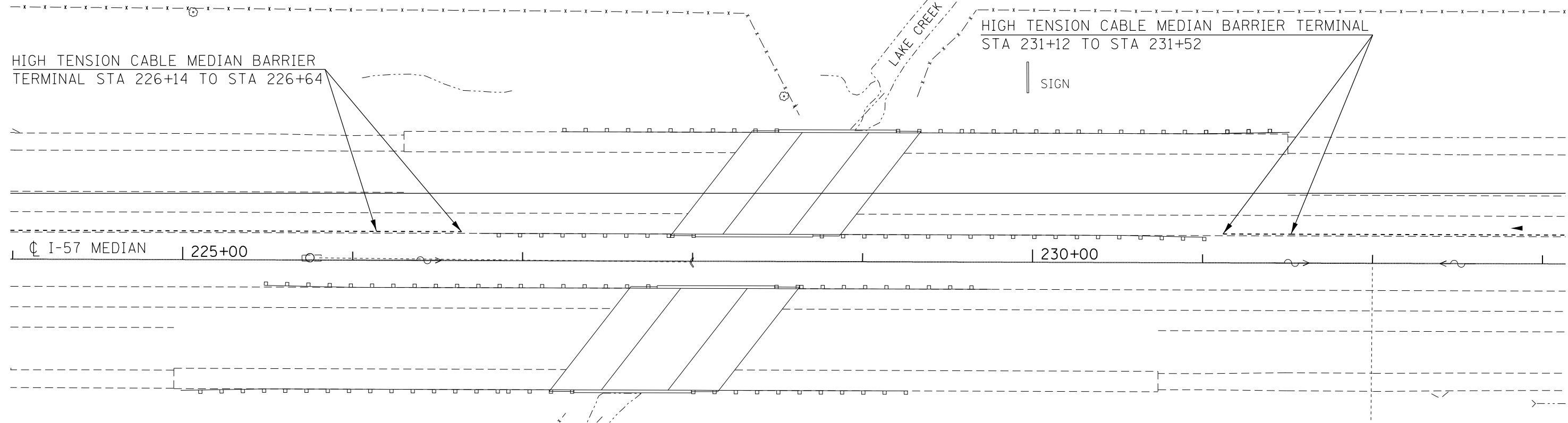
F.A.I RTE.	SECTION	COUNTY	TOTAL SHEETS	SHEET NO.
57	D9 CABLE GUARDRAIL 2017-1	WILLIAMSON	12	4
			CONTRACT NO. 78552	
ILLINOIS FED. AID PROJECT				



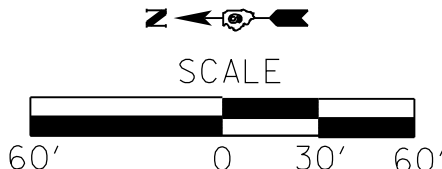
- NOTES:
1. LEAVE AT LEAST 10 FT BETWEEN THE TRADITIONAL GUARDRAIL TERMINAL AND THE CABLE MEDIAN BARRIER TERMINAL.
  2. PLACE CABLE MEDIAN BARRIER POSTS 1 FT FROM THE OUTSIDE EDGE OF THE NORTHBOUND MEDIAN SIDE SHOULDER.



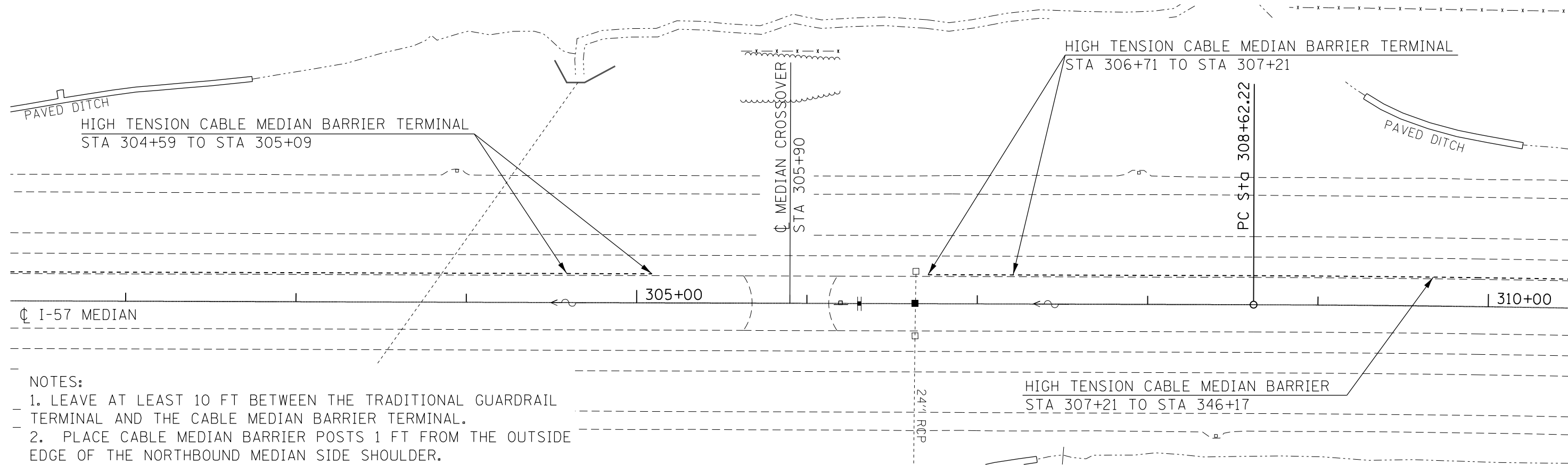
FILE NAME =	USER NAME = poesi	DESIGNED -	REVISED -	<b>STATE OF ILLINOIS DEPARTMENT OF TRANSPORTATION</b>	<b>NB I-57 CABLE MEDIAN BARRIER PLAN</b>				F.A.I. RTE.	SECTION	COUNTY	TOTAL SHEETS	SHEET NO.
pw:\IL084EBIDINTEG\illinois.gov\PIDOT\Documents\IDOT Offices\District 9\Projects\78552\Drawings\Cable\sheet\shc-plan-prf.dgn	PLOT SCALE = 60.0000' / in.	CHECKED -	REVISED -						57	09 CABLE GUARDRAIL 2017-1	WILLIAMSON	12	6
Default	PLOT DATE = 12/9/2016	DATE -	REVISED -		SCALE: SHEET OF SHEETS STA. TO STA.				ILLINOIS FED. AID PROJECT				
CONTRACT NO. 78552													



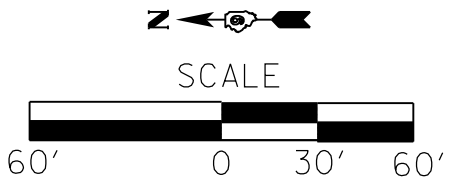
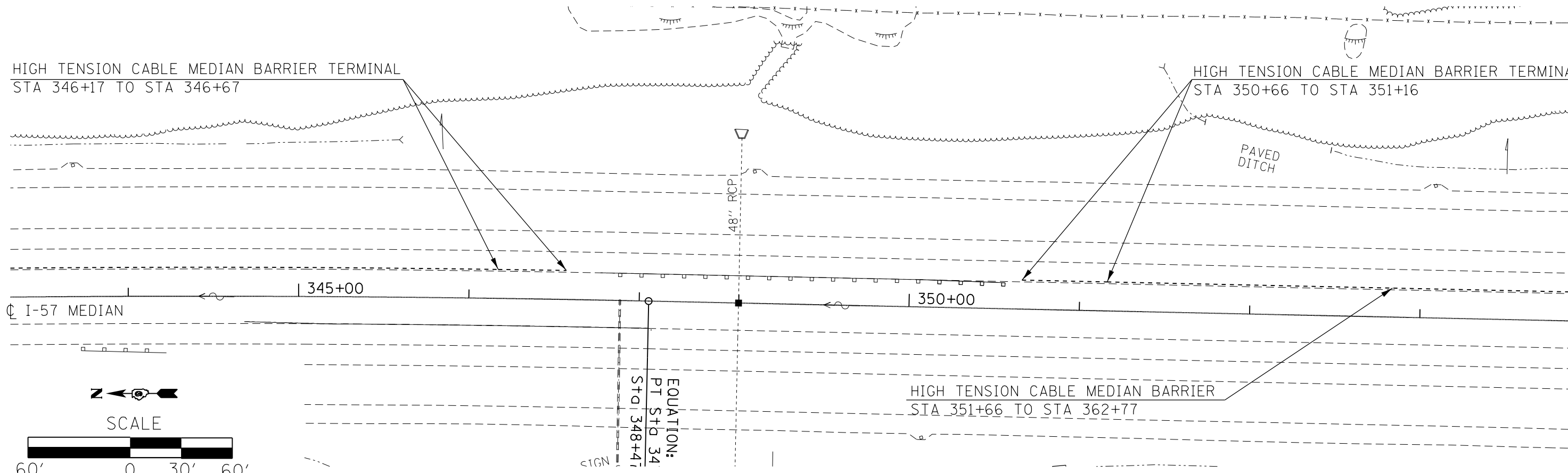
- NOTES:
1. LEAVE AT LEAST 10 FT BETWEEN THE TRADITIONAL GUARDRAIL TERMINAL AND THE CABLE MEDIAN BARRIER TERMINAL.
  2. PLACE CABLE MEDIAN BARRIER POSTS 1 FT FROM THE OUTSIDE EDGE OF THE NORTHBOUND MEDIAN SIDE SHOULDER.



FILE NAME =	USER NAME = poesl	DESIGNED -	REVISED -	<b>STATE OF ILLINOIS DEPARTMENT OF TRANSPORTATION</b>	<b>NB I-57 CABLE MEDIAN BARRIER PLAN</b>				F.A.I. RTE.	SECTION	COUNTY	TOTAL SHEETS	SHEET NO.
pw:\IL084EBIDINTEG.illinois.gov\PIWIDOT\Documents\IDOT Offices\District 9\Projects\78552\Drawings\CAD\Sheets\shc-planpr.f.dgn		CHECKED -	REVISED -		57	D9 CABLE GUARDRAIL 2017-1	WILLIAMSON	12	7				
Default	PLOT SCALE = 60.0000' / in.	DATE -	REVISED -		SCALE: SHEET OF SHEETS STA. TO STA.				CONTRACT NO. 78552				
	PLOT DATE = 12/9/2016				ILLINOIS FED. AID PROJECT								



- NOTES:
1. LEAVE AT LEAST 10 FT BETWEEN THE TRADITIONAL GUARDRAIL TERMINAL AND THE CABLE MEDIAN BARRIER TERMINAL.
  2. PLACE CABLE MEDIAN BARRIER POSTS 1 FT FROM THE OUTSIDE EDGE OF THE NORTHBOUND MEDIAN SIDE SHOULDER.

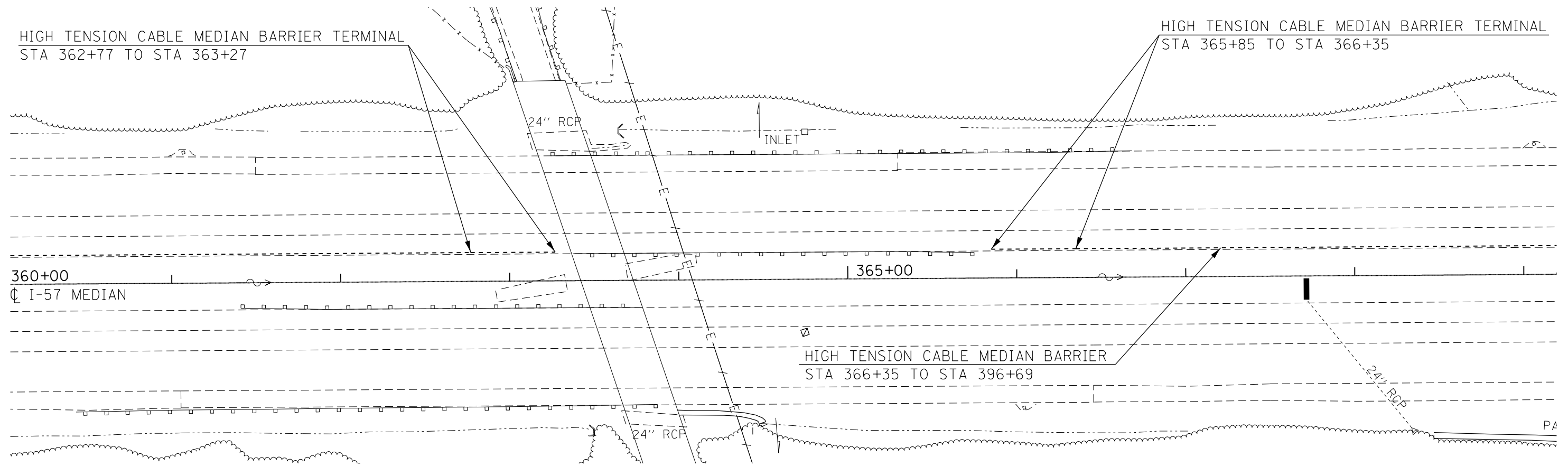


FILE NAME =	USER NAME = poesi	DESIGNED -	REVISED -	<b>STATE OF ILLINOIS DEPARTMENT OF TRANSPORTATION</b>	<b>NB I-57 CABLE MEDIAN BARRIER PLAN</b>				F.A.I. RTE.	SECTION	COUNTY	TOTAL SHEETS	SHEET NO.
pw:\IL084EBIDINTEG.illinois.gov\PWIDOT\Documents\IDOT Offices\District 9\Projects\78552\DRAWING\CAB\sheet\shc\planpr.f.dgn	PLOT SCALE = 60.0000' / in.	CHECKED -	REVISED -						57	D9 CABLE GUARDRAIL 2017-1	WILLIAMSON	12	8
Default	PLOT DATE = 12/9/2016	DATE -	REVISED -		CONTRACT NO. 78552				ILLINOIS FED. AID PROJECT				
					SCALE:	SHEET	OF	SHEETS	STA.	TO	STA.		



HIGH TENSION CABLE MEDIAN BARRIER TERMINAL  
STA 362+77 TO STA 363+27

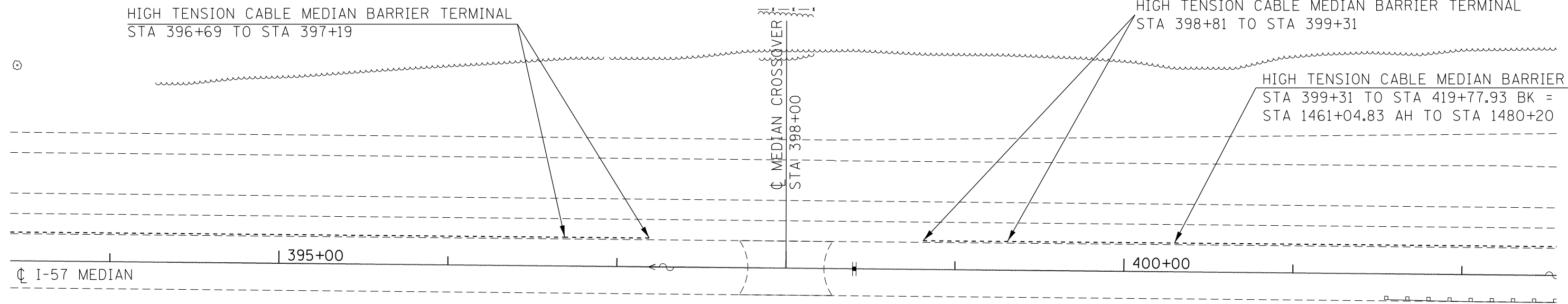
HIGH TENSION CABLE MEDIAN BARRIER TERMINAL  
STA 365+85 TO STA 366+35



HIGH TENSION CABLE MEDIAN BARRIER TERMINAL  
STA 396+69 TO STA 397+19

HIGH TENSION CABLE MEDIAN BARRIER TERMINAL  
STA 398+81 TO STA 399+31

HIGH TENSION CABLE MEDIAN BARRIER  
STA 399+31 TO STA 419+77.93 BK =  
STA 1461+04.83 AH TO STA 1480+20

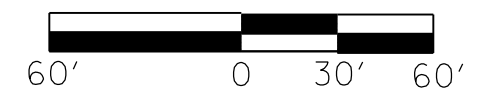


NOTES:

1. LEAVE AT LEAST 10 FT BETWEEN THE TRADITIONAL GUARDRAIL TERMINAL AND THE CABLE MEDIAN BARRIER TERMINAL.
2. PLACE CABLE MEDIAN BARRIER POSTS 1 FT FROM THE OUTSIDE EDGE OF THE NORTHBOUND MEDIAN SIDE SHOULDER.



SCALE



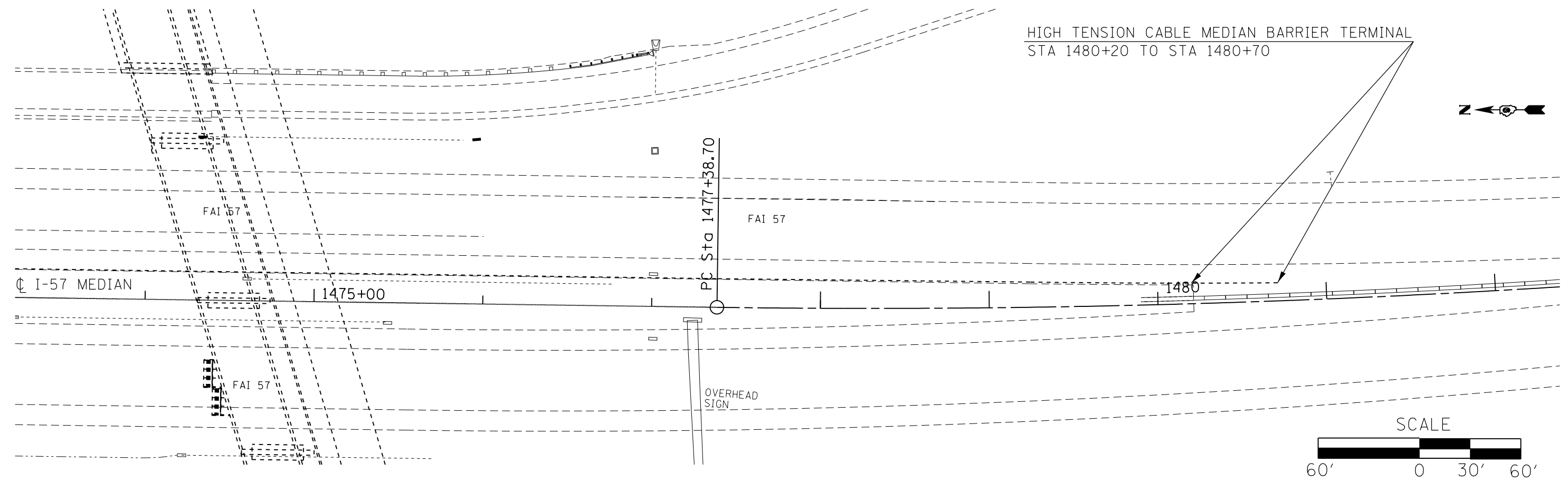
FILE NAME =	USER NAME = poesi	DESIGNED -	REVISED -
p:\11\084EBID\INTEG\illinois.gov\PI\DOT\Documents\DOT Offices\District 9\Projects\78552\Drawings\Cable\sheet\shc\planprf.dgn		DRAWN -	REVISED -
	PLOT SCALE = 60.0000' / in.	CHECKED -	REVISED -
Default	PLOT DATE = 12/9/2016	DATE -	REVISED -

STATE OF ILLINOIS  
DEPARTMENT OF TRANSPORTATION

NB I-57 CABLE MEDIAN  
BARRIER PLAN

SCALE: SHEET OF SHEETS STA. TO STA.

F.A.I. RTE.	SECTION	COUNTY	TOTAL SHEETS	SHEET NO.
57	D9 CABLE GUARDRAIL 2017-1	WILLIAMSON	12	9
CONTRACT NO. 78552				
ILLINOIS FED. AID PROJECT				



**NOTES:**

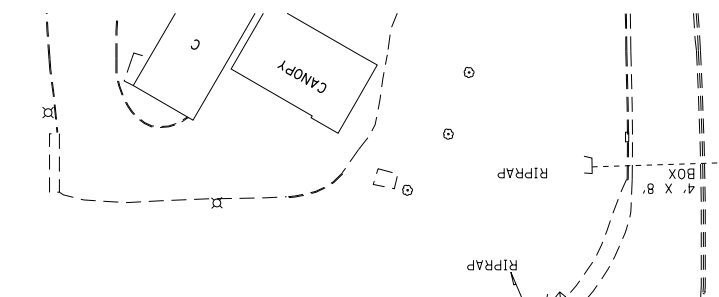
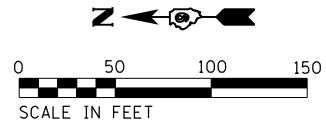
1. LEAVE AT LEAST 10 FT BETWEEN THE TRADITIONAL GUARDRAIL TERMINAL AND THE CABLE MEDIAN BARRIER TERMINAL.
2. PLACE CABLE MEDIAN BARRIER POSTS 1 FT FROM THE OUTSIDE EDGE OF THE NORTHBOUND MEDIAN SIDE SHOULDER.

FILE NAME =	USER NAME = poesi	DESIGNED -	REVISED -	<b>STATE OF ILLINOIS DEPARTMENT OF TRANSPORTATION</b>	<b>NB I-57 CABLE MEDIAN BARRIER PLAN</b>				F.A.I RTE.	SECTION	COUNTY	TOTAL SHEETS	SHEET NO.
p:\11084EBIDINTEG\illinois.gov\PI\DOT\Documents\DOT Offices\District 9\Projects\78552\Drawings\CAD\Sheets\shc\plan\p.f.dgn		DRAWN -	REVISED -						57	D9 CABLE GUARDRAIL 2017-1	WILLIAMSON	12	10
Default	PLOT SCALE = 60.0000' / in.	CHECKED -	REVISED -		CONTRACT NO. 78552				ILLINOIS FED. AID PROJECT				
	PLOT DATE = 12/9/2016	DATE -	REVISED -		SCALE:	SHEET	OF	SHEETS	STA.	TO	STA.		

**NOTES:**

WHEN I-57 IS UNDER TRAFFIC CONTROL AND PROTECTION 701400 IN THE VICINITY OF THE WEST MAIN INTERCHANGE THE TRAFFIC CONTROL FOR THE NORTHBOUND WEST MAIN STREET ENTRANCE RAMP SHALL BE INSTALLED AS SHOWN AND PAID FOR AS TRAFFIC CONTROL AND PROTECTION (SPECIAL).

EXACT LOCATION OF SIGNS TO BE AS DIRECTED BY THE ENGINEER.



NORTHBOUND WEST MAIN STREET  
ENTRANCE RAMP

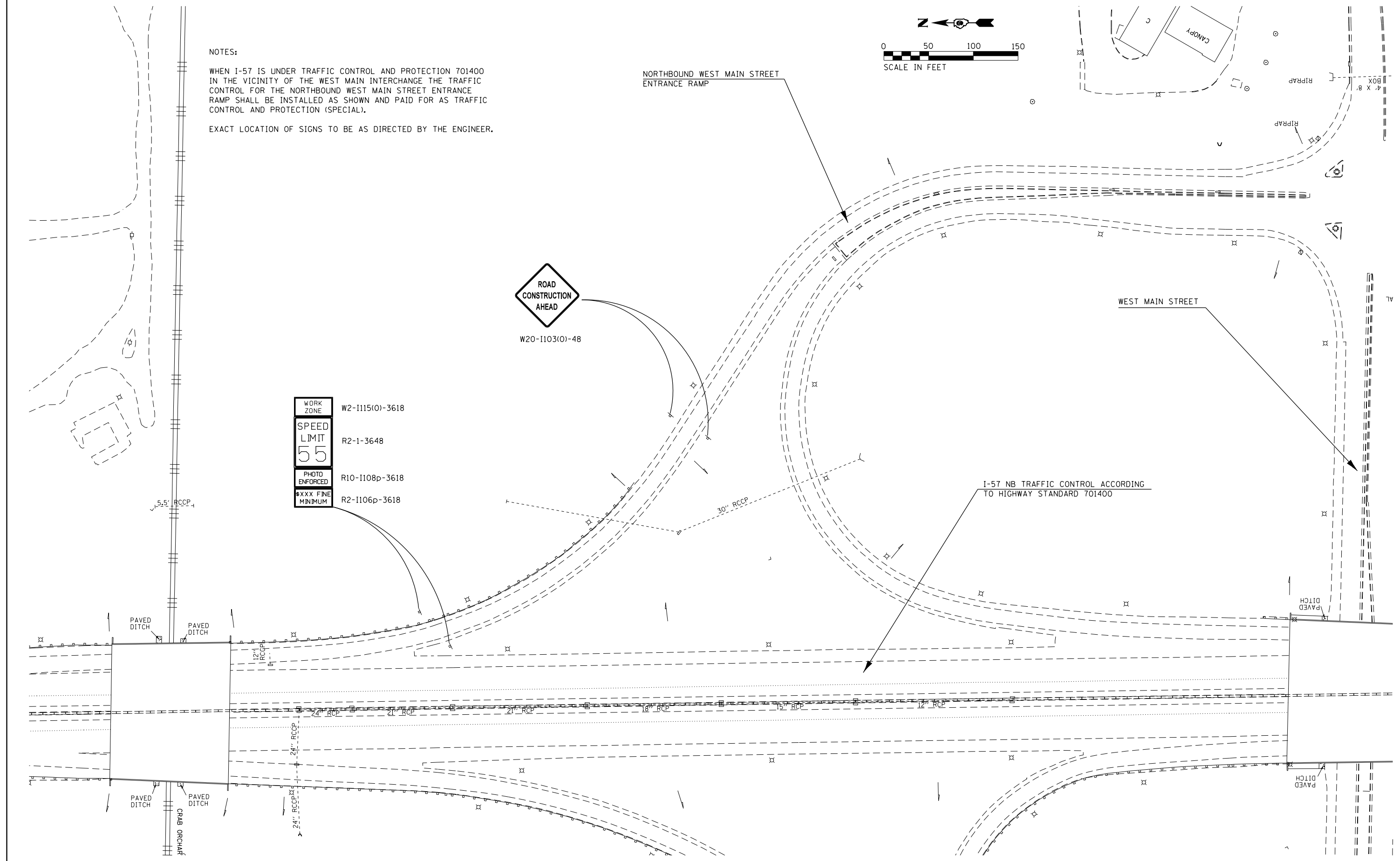
WEST MAIN STREET



W20-I103(O)-48

WORK ZONE	W2-I115(O)-3618
SPEED LIMIT	R2-1-3648
55	
PHOTO ENFORCED	R10-I108p-3618
XXXX FINE MINIMUM	R2-I106p-3618

I-57 NB TRAFFIC CONTROL ACCORDING TO HIGHWAY STANDARD 701400

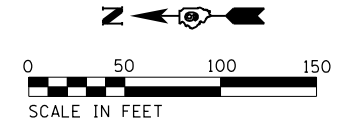


FILE NAME =	USER NAME = poe1	DESIGNED -	REVISED -	<b>STATE OF ILLINOIS DEPARTMENT OF TRANSPORTATION</b>	<b>TRAFFIC CONTROL WEST MAIN STREET INTERCHANGE</b>				F.A.I. RTE.	SECTION	COUNTY	TOTAL SHEETS	SHEET NO.
p:\11\084EBID\INTEG.illinois.gov\PIWIDOT\Documents\IDOT Offices\District 9\Projects\78552\Drawings\CAD\Sheets\shc-planpr.f.dgn		CHECKED -	REVISED -		57	D9 CABLE GUARDRAIL 2017-1	WILLIAMSON	12	12				
Default		DATE -	REVISED -		SCALE: SHEET OF SHEETS STA. TO STA.				CONTRACT NO. 78552				
	PLOT SCALE = 100.0000' / 1in.				ILLINOIS FED. AID PROJECT								

NOTES:

WHEN I-57 IS UNDER TRAFFIC CONTROL AND PROTECTION 701400 OR 701406 IN THE VICINITY OF THE HILL AVE INTERCHANGE THE TRAFFIC CONTROL FOR THE NORTHBOUND ENTRANCE RAMP SHALL BE INSTALLED AS SHOWN AND PAID FOR AS TRAFFIC CONTROL AND PROTECTION (SPECIAL).

EXACT LOCATION OF SIGNS AND SPEED LIMIT TO BE DISPLAYED TO BE AS DIRECTED BY THE ENGINEER.



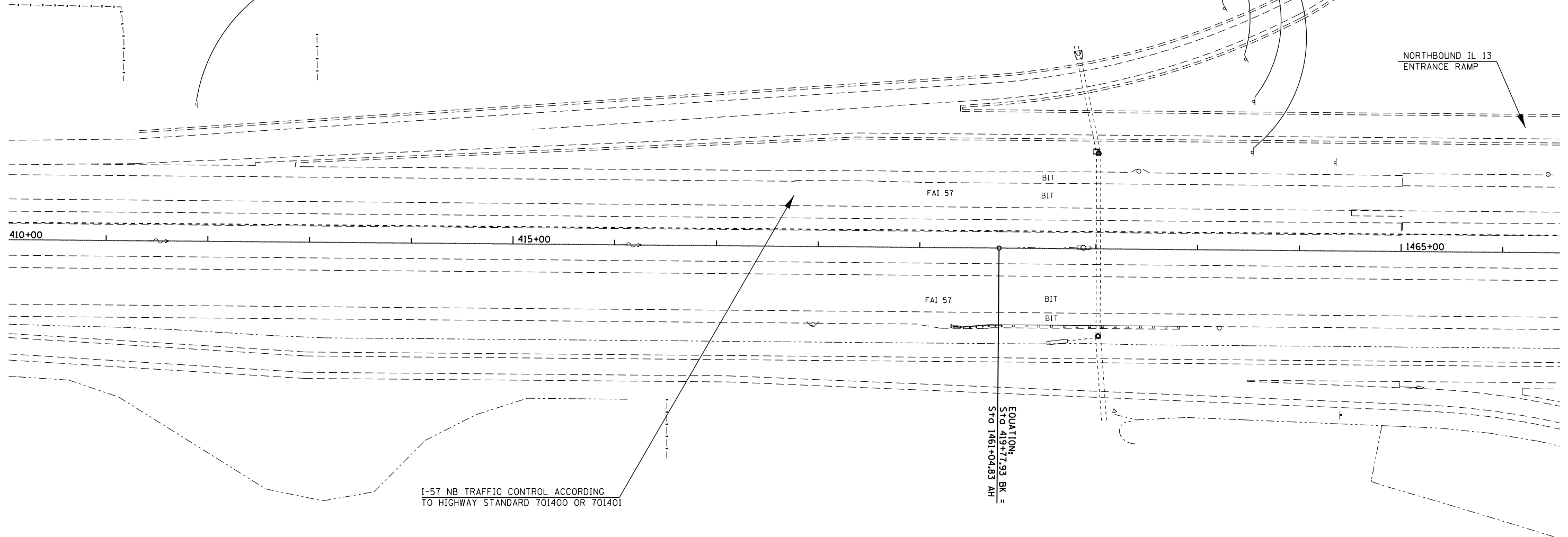
WORK ZONE	W2-1115(0)-3618
SPEED LIMIT	R2-1-3648
PHOTO ENFORCED	R10-1108p-3618
XXXX FINE MINIMUM	R2-1106p-3618



W20-1103(0)-48

NORTHBOUND THE HILL AVENUE  
ENTRANCE RAMP

NORTHBOUND IL 13  
ENTRANCE RAMP



I-57 NB TRAFFIC CONTROL ACCORDING  
TO HIGHWAY STANDARD 701400 OR 701401

FILE NAME =	USER NAME = poe1	DESIGNED -	REVISED -
pw:\IL\084EBIDINTEG\illinois.gov\PWIDOT\Documents\IDOT Offices\District 9\Projects\78552\DRAWING\to\CAD\sheets\shc\planpr.f.dgn		DRAWN -	REVISED -
Default	PLOT SCALE = 100.0000' / in.	CHECKED -	REVISED -
	PLOT DATE = 12/9/2016	DATE -	REVISED -

STATE OF ILLINOIS  
DEPARTMENT OF TRANSPORTATION

TRAFFIC CONTROL  
THE HILL AVE INTERCHANGE

SCALE: SHEET OF SHEETS STA. TO STA.

F.A. RTE.	SECTION	COUNTY	TOTAL SHEETS	SHEET NO.
	D9 CABLE GUARDRAIL 2017-1	WILLIAMSON	12	11
				78552
ILLINOIS FED. AID PROJECT				