

03-03-2017 LETTING ITEM 049

STATE OF ILLINOIS
DEPARTMENT OF TRANSPORTATION
OFFICE OF HIGHWAYS PROJECT IMPLEMENTATION

F.A.P. RTE.	SECTION	COUNTY	TOTAL SHEETS	SHEET NO.
13/127	D9 DEMOLITION 2017-1	PERRY	12	1
ILLINOIS			78554	

FOR INDEX OF SHEETS, SEE SHEET NO. 3
FOR SUMMARY OF QUANTITIES, SEE SHEET NO. 4-6

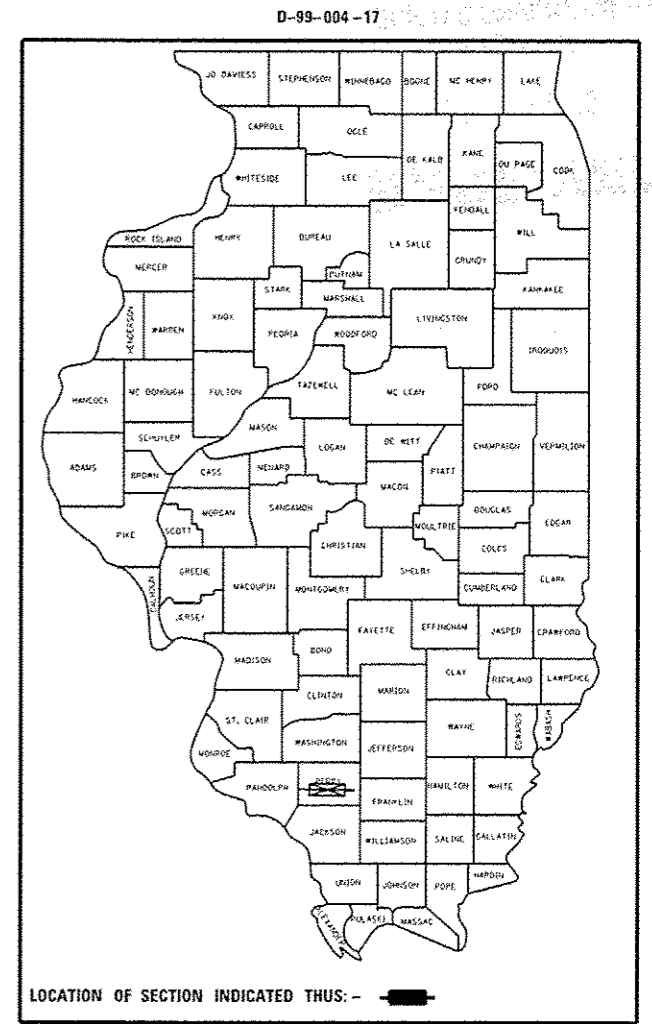
TOWNSHIP
PINCKNEYVILLE

PROPOSED HIGHWAY PLANS

FAP 42 ROUTE 13/127
SECTION D9 DEMOLITION 2017-1

**BUILDING DEMOLITION
PERRY COUNTY**

C-99-004-17

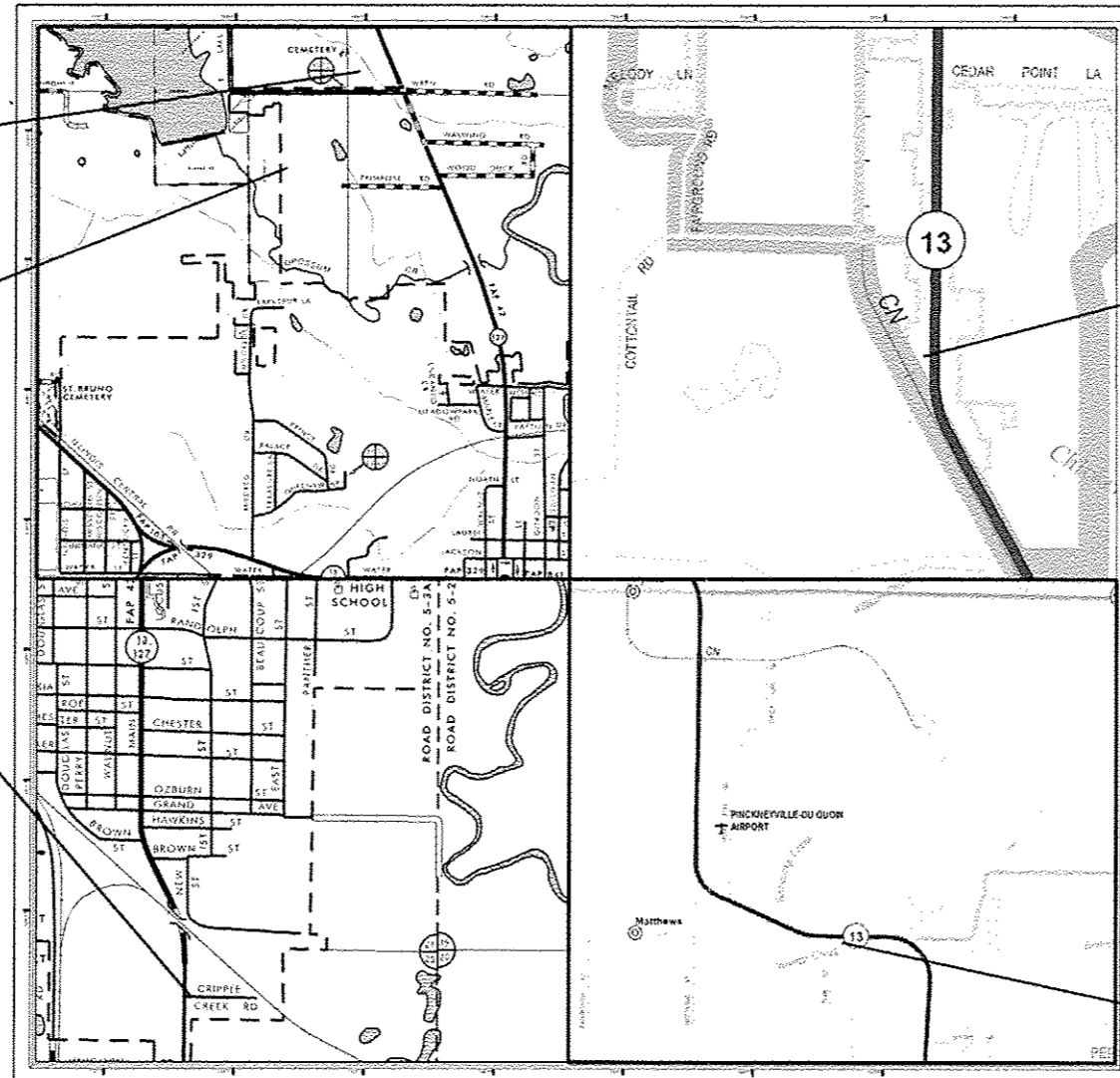


LOCATION #1
BLDG #1 & BLDG #2

LOCATION #2
BLDG #3, BLDG #4, & BLDG #5

LOCATION #3
BLDG #6 & BLDG #7

LOCATION #4
BLDG #8 & BLDG #9



LOCATION #5
BLDG #10, BLDG #11 & BLDG #12

STATE OF ILLINOIS
DEPARTMENT OF TRANSPORTATION
OFFICE OF HIGHWAYS PROJECT IMPLEMENTATION

SUBMITTED Dec 8 2016

Jeffrey Z Keen
REGION FIVE ENGINEER

Jan 27 2017
Marion M. Addis, P.E.
ENGINEER OF DESIGN AND ENVIRONMENT


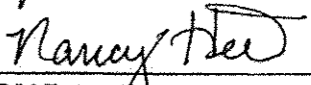
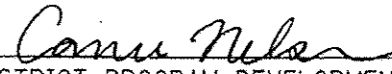
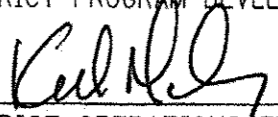

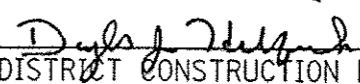

Jan 27 2017
Michelle Allen
DIRECTOR OF PROGRAM DEVELOPMENT

J.U.L.I.E.
JOINT UTILITY LOCATION INFORMATION FOR EXCAVATION
1-800-892-0123
OR 811

PROJECT ENGINEER CHARLES STEIN
PROJECT DESIGNER AESHA JACKSON

CONTRACT NO. 78554

**PRINTED BY THE AUTHORITY
OF THE STATE OF ILLINOIS**

Prepared By:	
	DISTRICT STUDIES & PLANS ENGINEER
Examined By:	
	DISTRICT LAND ACQUISITION ENGINEER
Examined By:	
	DISTRICT PROGRAM DEVELOPMENT ENGINEER
Examined By:	
	DISTRICT OPERATIONS ENGINEER
Examined By:	
	DISTRICT PROJECT IMPLEMENTATION ENGINEER
Examined By:	
	DISTRICT CONSTRUCTION ENGINEER
Examined By:	
	DISTRICT MATERIALS ENGINEER

INDEX

SHEET NO.	DESCRIPTION
1	COVER SHEET
2	SIGNATURE SHEET
3	INDEX, STANDARDS, GENERAL NOTES & COMMITMENTS
4-6	SUMMARY OF QUANTITIES
7	SCHEDULE
8	LOCATION #1
9	LOCATION #2
10	LOCATION #3
11	LOCATION #4
12	LOCATION #5

GENERAL NOTES

ALL UNFINISHED DEMOLITION MUST BE PROTECTED WITH ORANGE CONSTRUCTION FENCING DURING NON-WORKING HOURS.

THE CONTRACTOR IS RESPONSIBLE FOR ANY PERMITS AND FEES ASSOCIATED WITH THE PAY ITEM SEALING ABANDONED WATER WELL.

MAILBOXES SHALL BE REMOVED AT THE CONTRACTORS EXPENSE

BILLBOARDS AND TREE STUMPS SHALL NOT BE REMOVED

EARTHWORK COMPACTION SHALL BE TO THE SATISFACTION OF THE ENGINEER.

STANDARDS

- 701006-05
- 701201-04
- 701501-06

COMMITMENTS

NONE

FILE NAME *	USER NAME * jacksonc	DESIGNED -	REVISED -	STATE OF ILLINOIS DEPARTMENT OF TRANSPORTATION	INDEX, STANDARDS, GENERAL NOTES & COMMITMENTS	F.A.P. RTE.	SECTION	COUNTY	TOTAL SHEETS	SHEET NO.	
p:\NLBB4EB10\INTEG\Illinois.gov\FWIDOT\Documents\DOT Offices\District 9\Projects\7854\CRAN to\Cr9sheets\7854.sh\dgn		CHECKED -	REVISED -			13/127	D9 DEMOLITION 2017-1	PERRY	12	3	
Default	PLOT SCALE * 1/8"=1'-0"	DATE -	REVISED -			SCALE:	SHEET	OF	SHEETS	STA.	TO STA.
	PLOT DATE * 12/8/2016					ILLINOIS FED. AID PROJECT					

SUMMARY OF QUANTITIES - CONT

COUNTY:	Perry County (073)
ROUTE:	IL 13/127 FAP 42
FUNDING:	100% STATE
LOCATION:	URBAN
TOTAL QUANTITY	DEMOLITION 0044

CODE NUMBER	ITEM DESCRIPTION	UNIT	TOTAL QUANTITY	DEMOLITION 0044
70102620	TRAFFIC CONTROL AND PROTECTION, STANDARD 701501	LSUM	1	1
X0323415	SITE CLEAN-UP	LSUM	1	1
X0488100	REMOVING EXISTING SEPTIC TANK	EACH	4	4
Z0007601	BUILDING REMOVAL NO. 1	LSUM	1	1
Z0007602	BUILDING REMOVAL NO. 2	LSUM	1	1
Z0007603	BUILDING REMOVAL NO. 3	LSUM	1	1
Z0007604	BUILDING REMOVAL NO. 4	LSUM	1	1
Z0007605	BUILDING REMOVAL NO. 5	LSUM	1	1
Z0007606	BUILDING REMOVAL NO. 6	LSUM	1	1
Z0007607	BUILDING REMOVAL NO. 7	LSUM	1	1
Z0007608	BUILDING REMOVAL NO. 8	LSUM	1	1
Z0007609	BUILDING REMOVAL NO. 9	LSUM	1	1
Z0007610	BUILDING REMOVAL NO. 10	LSUM	1	1
Z0007611	BUILDING REMOVAL NO. 11	LSUM	1	1

HA

SUMMARY OF QUANTITIES - CONT

COUNTY:	Perry County (073)
ROUTE:	IL 13/127 FAP 42
FUNDING:	100% STATE
LOCATION:	URBAN

CODE NUMBER	ITEM DESCRIPTION	UNIT	TOTAL QUANTITY	DEMOLITION 0044
Z0007612	BUILDING REMOVAL NO. 12	LSUM	1	1
Z0022800	FENCE REMOVAL	FOOT	160	160
* Z0049901	REMOVAL AND DISPOSAL OF NON-FRIABLE ASBESTOS, BUILDING NO. 1	LSUM	1	1
* Z0049906	REMOVAL AND DISPOSAL OF NON-FRIABLE ASBESTOS, BUILDING NO. 6	LSUM	1	1
* Z0049908	REMOVAL AND DISPOSAL OF NON-FRIABLE ASBESTOS, BUILDING NO. 8	LSUM	1	1
Z0077803	REMOVE WOOD POST	EACH	1	1

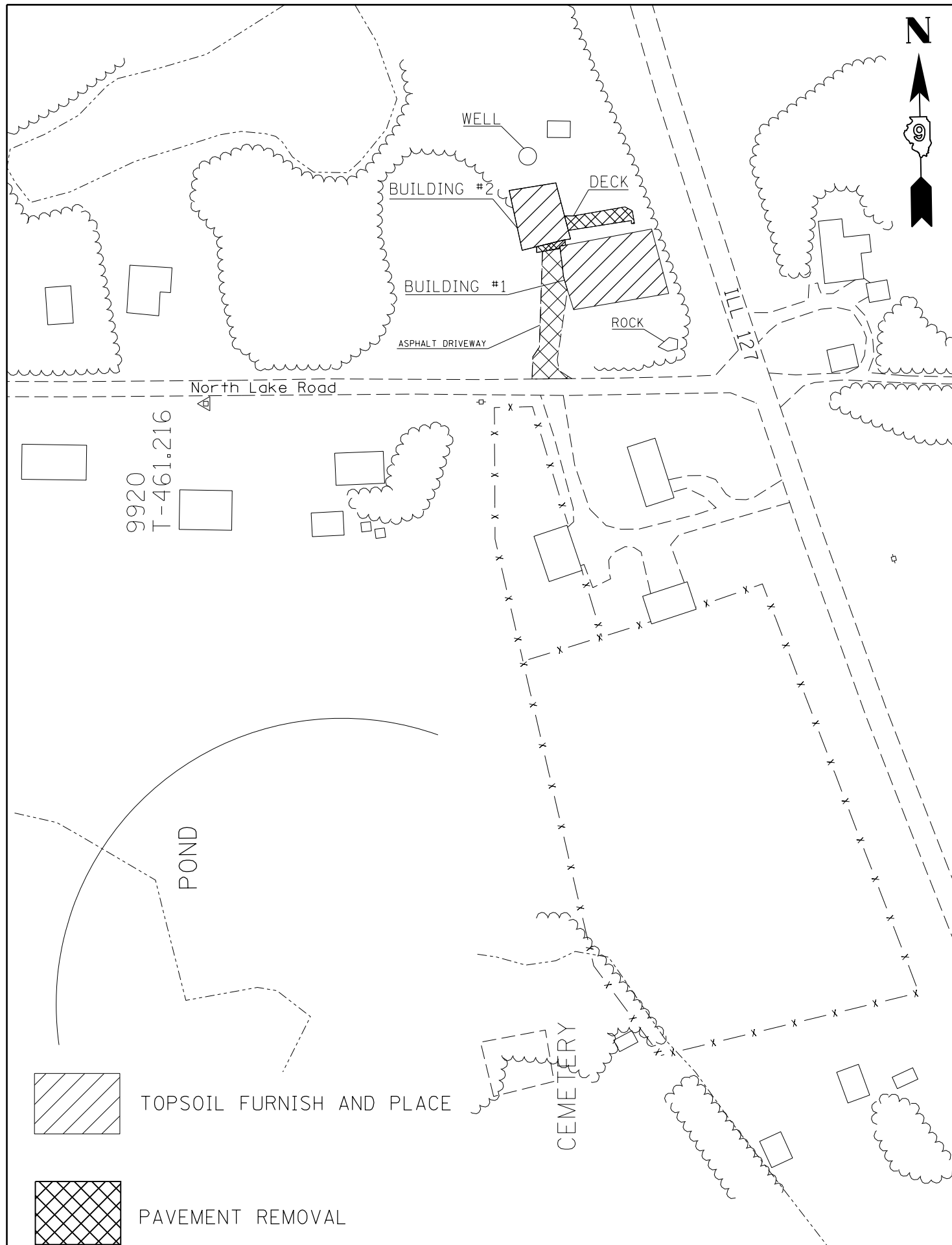
6

* SPECIALTY ITEM

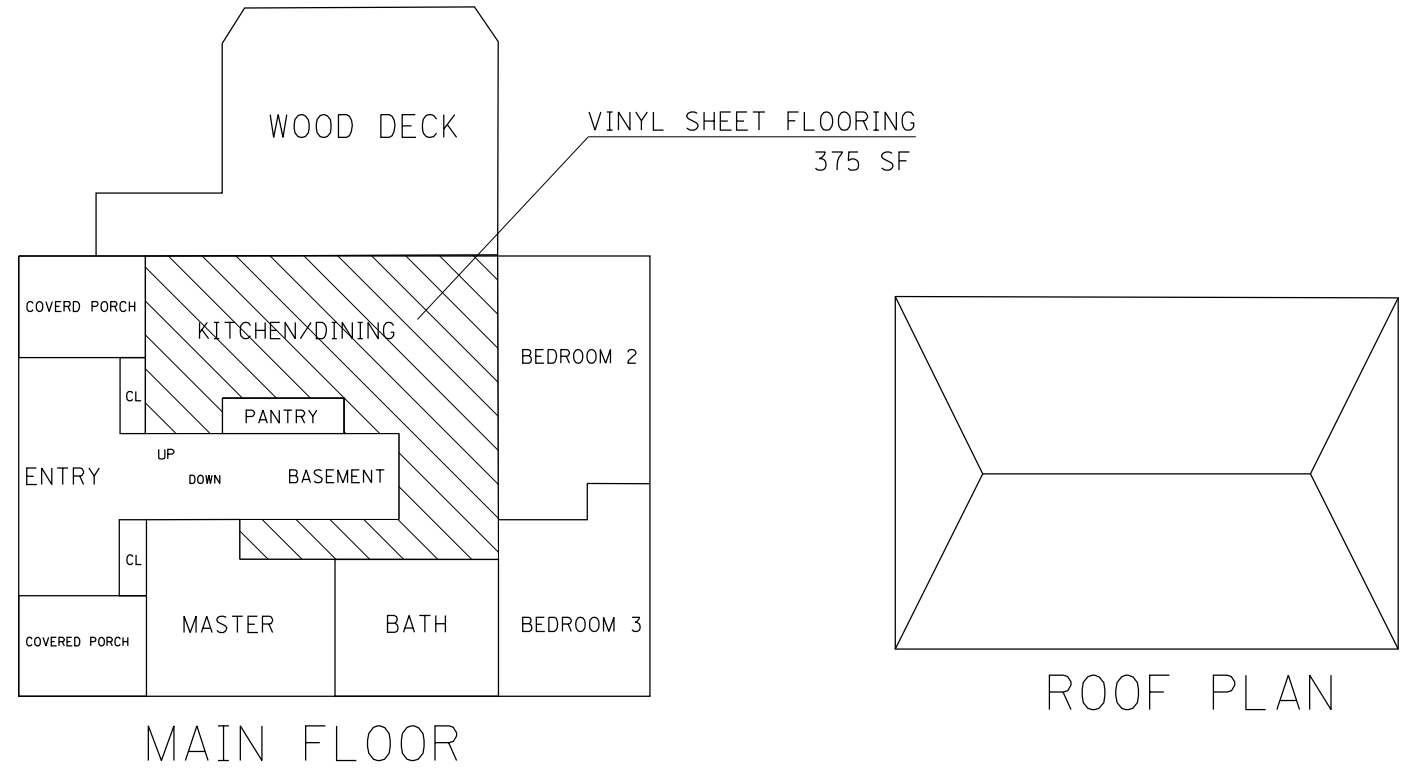
SCHEDULE

LOCATION		SEEDING CLASS 1	SEEDING CLASS 7	TEMP EROSION CONTROL SEEDING	NITROGEN FERTILIZER NUTRIENT	PHOSPHORUS FERTILIZER NUTRIENT	POTASSIUM FERTILIZER NUTRIENT	AGGREGATE GROUND LIMESTONE	MULCH, METHOD 2	PAVEMENT REMOVAL	TOP SOIL FURNISH & PLACE, 4"	FURNISHED EXCAVATION
		ACRE	ACRE	POUND	POUND	POUND	POUND	TON	ACRE	SQ YD	SQ YD	CU YD
LOCATION #1	BUILDING #1 (HOUSE)	0.037	0.037	10.95	6.57	3.29	3.29	0.073	0.037	0	177	0
	DRIVEWAY	0.018	0.018	5.51	3.31	1.65	1.65	0.037	0.018	89	89	0
	SIDEWALK	0.001	0.001	0.36	0.21	0.11	0.11	0.002	0.001	6	6	0
	CONC. SLAB	0.019	0.019	5.84	3.50	1.75	1.75	0.039	0.019	94	94	0
	BACK DECK	0.012	0.012	3.75	2.25	1.12	1.12	0.025	0.012	0	60	0
	SEPTIC TANK	0.001	0.001	0.41	0.25	0.12	0.12	0.003	0.001	0	7	13
	BASEMENT	0.037	0.037	10.95	6.57	3.29	3.29	0.073	0.037	0	0	589
	BUILDING #2 (GARAGE)	0.018	0.018	5.29	3.17	1.59	1.59	0.035	0.018	0	85	0
LOCATION #2	BUILDING #3 (HOUSE)	0.026	0.026	7.75	4.65	2.32	2.32	0.052	0.026	0	125	0
	BUILDING #4 (SHED)	0.009	0.009	2.64	1.59	0.79	0.79	0.018	0.009	0	43	0
	BUILDING #5 (SHED)	0.004	0.004	1.16	0.69	0.35	0.35	0.008	0.004	0	19	0
	GARAGE	0.010	0.010	2.88	1.73	0.86	0.86	0.019	0.010	0	46	0
	SEPTIC TANK	0.001	0.001	0.41	0.25	0.12	0.12	0.003	0.001	0	7	13
	PORCH	0.002	0.002	0.55	0.33	0.17	0.17	0.004	0.002	0	9	0
	BACK DECK	0.011	0.011	3.18	1.98	0.99	0.99	0.022	0.011	0	0	0
	SIDEWALK	0.002	0.002	0.69	0.41	0.21	0.21	0.005	0.002	11	11	0
	BASEMENT	0.026	0.026	7.75	4.65	2.32	2.32	0.052	0.026	0	0	417
	LOCATION #3	BUILDING #6 (HOUSE)	0.044	0.044	13.26	7.95	3.98	3.98	0.088	0.044	0	214
	BUILDING #7 (SHED)	0.002	0.002	0.66	0.40	0.20	0.20	0.004	0.002	0	11	0
	SIDEWALK	0.002	0.002	0.59	0.35	0.18	0.18	0.004	0.002	9	9	0
	SEPTIC TANK	0.001	0.001	0.41	0.25	0.12	0.12	0.003	0.001	0	7	13
	CONC. SLAB (PATIO)	0.003	0.003	0.99	0.60	0.30	0.30	0.007	0.003	16	16	0
	CONC. SLAB (DRIVEWAY)	0.010	0.010	2.98	1.79	0.89	0.89	0.020	0.010	48	48	0
LOCATION #4	BUILDING #8 (HOUSE)	0.027	0.027	8.06	4.83	2.42	2.42	0.054	0.027	0	130	0
	BUILDING #9 (GARAGE)	0.012	0.012	3.64	2.19	1.09	1.09	0.024	0.012	0	59	0
	SIDEWALK #1	0.001	0.001	0.39	0.24	0.12	0.12	0.003	0.001	6	6	0
	SIDEWALK #2	0.006	0.006	1.93	1.16	0.58	0.58	0.013	0.006	31	31	0
	SIDEWALK #3	0.003	0.003	0.79	0.48	0.24	0.24	0.005	0.003	13	13	0
	ENTRY	0.001	0.001	0.33	0.20	0.10	0.10	0.002	0.001	0	5	0
	PORCH	0.002	0.002	0.72	0.43	0.21	0.21	0.005	0.002	0	12	0
LOCATION #5	BUILDING #10 (HOUSE)	0.028	0.028	8.47	5.08	2.54	2.54	0.056	0.028	0	137	0
	BUILDING #11 (SHED)	0.002	0.002	0.69	0.41	0.21	0.21	0.005	0.002	0	11	0
	BUILDING #12 (BARN)	0.046	0.046	13.77	8.26	4.13	4.13	0.092	0.046	0	222	0
	FENCE	0.004	0.004	1.10	0.66	0.33	0.33	0.007	0.004	0	18	0
	CONC. SLAB (GARAGE)	0.012	0.012	3.64	2.18	1.09	1.09	0.024	0.012	0	59	0
	WOOD POST	0.000	0.000	0.07	0.04	0.02	0.02	0.000	0.000	0	1	0
	SEPTIC TANK	0.001	0.001	0.41	0.25	0.12	0.12	0.003	0.001	0	7	13
	CONC. SLAB (PATIO)	0.001	0.001	0.22	0.13	0.07	0.07	0.001	0.001	4	4	0
	BASEMENT	0.028	0.028	8.47	5.08	2.54	2.54	0.056	0.028	0	0	70
	WATER CISTERN	0.005	0.005	1.52	0.91	0.46	0.46	0.010	0.005	0	25	57
	CONC. SLAB (NEAR TREE)	0.001	0.001	0.29	0.17	0.09	0.09	0.002	0.001	5	5	0
TOTALS		0.5	0.5	143	86	43	43	1.0	0.5	332	1825	1186

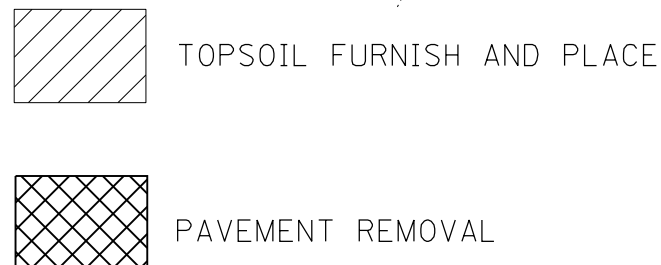
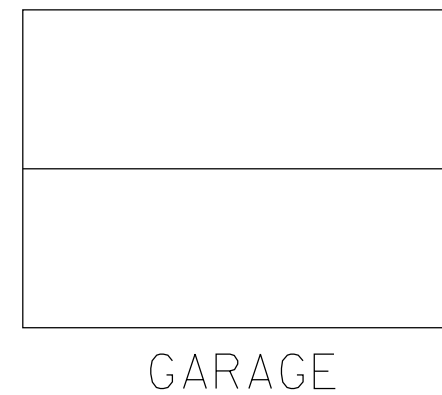
*NOTE: SEPTIC TANKS ARE ASSUMED TO BE 6'X6'X10' AND WATER CISTERN IS 13'X17'X7'



BUILDING #1: NON-FRIABLE ASBESTOS



BUILDING #2:



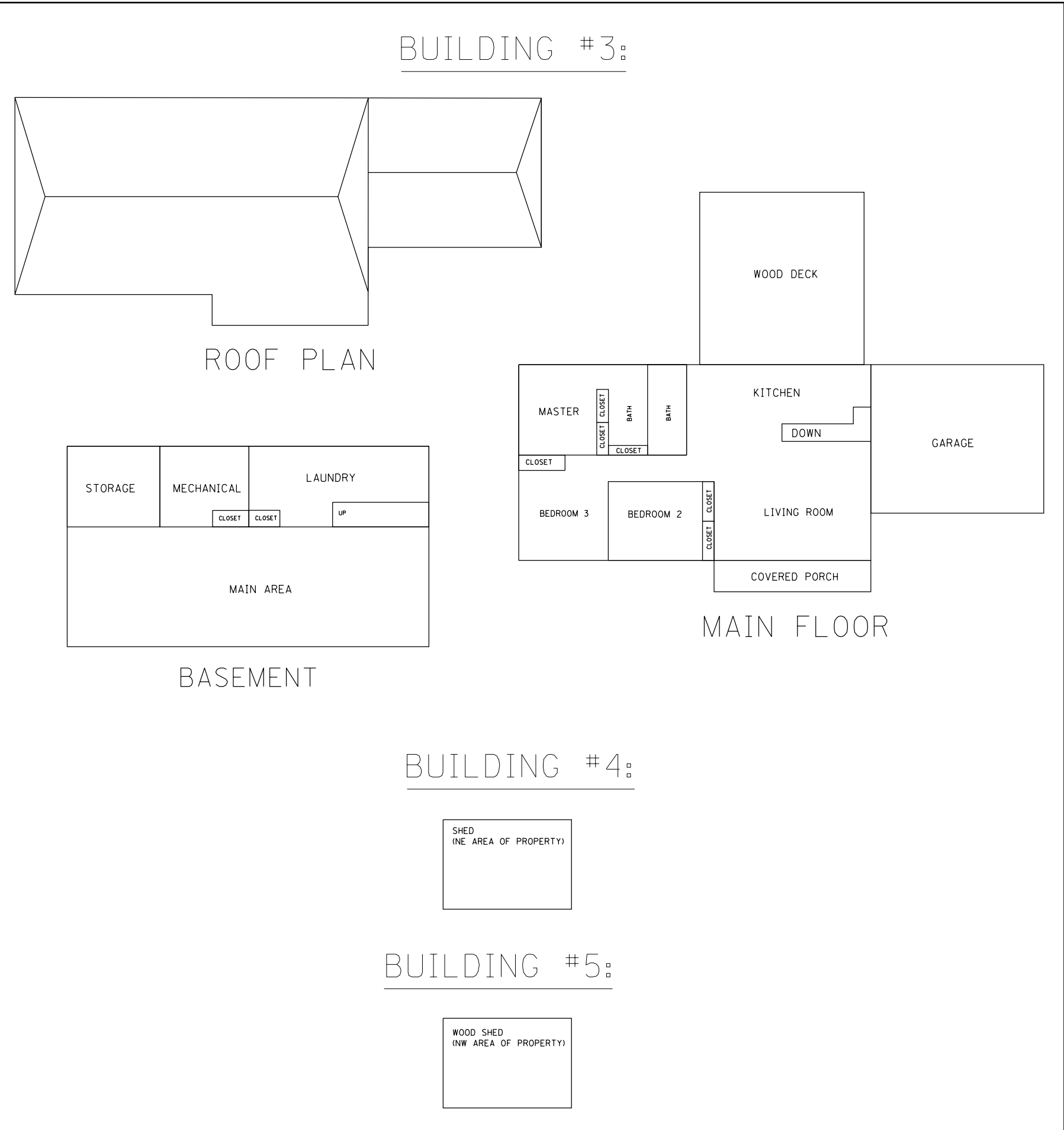
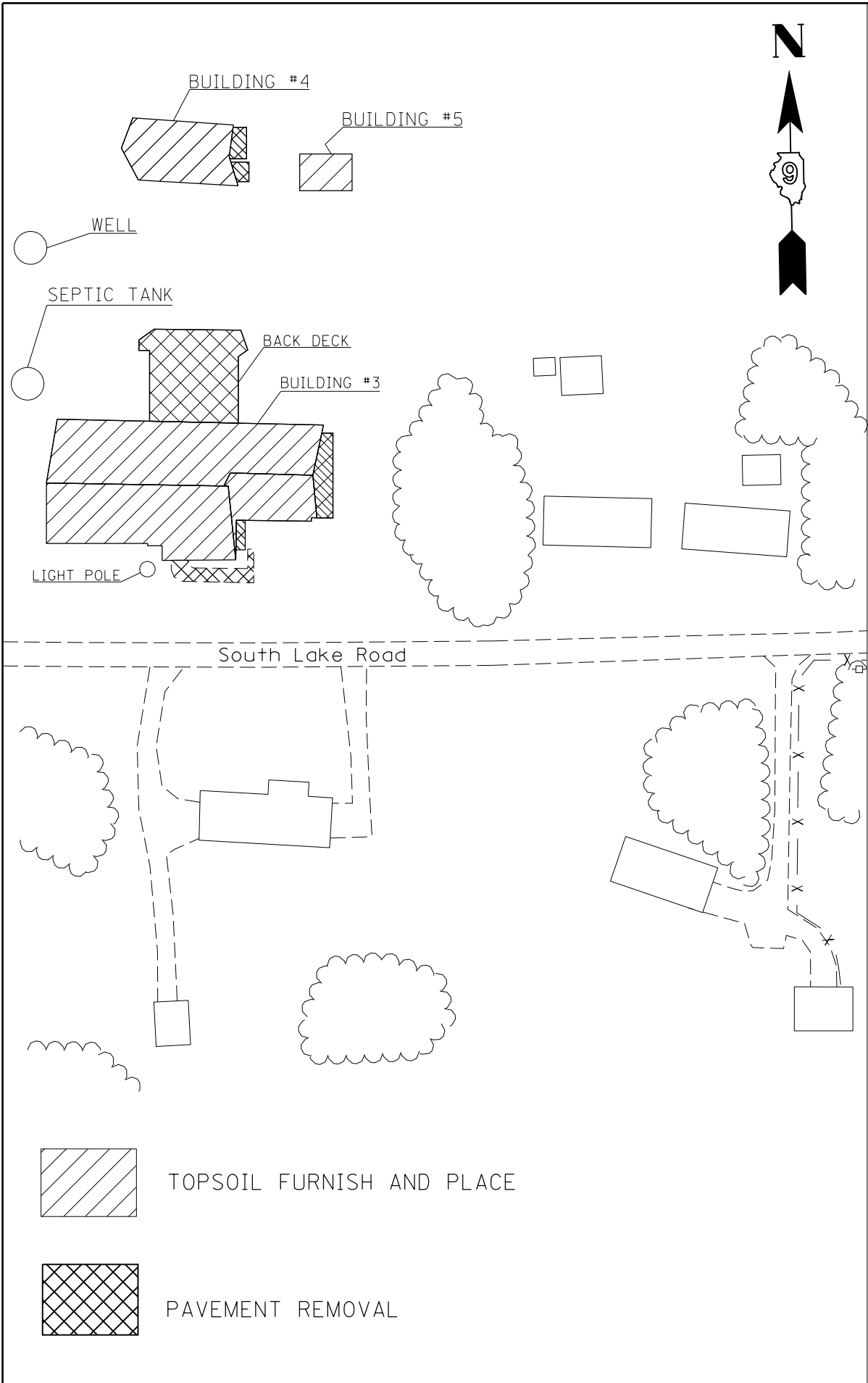
FILE NAME =	USER NAME = jacksonec	DESIGNED -	REVISED -
pw:\IL\084EBIDINTEG\illinois.gov\PIWIDOT\Documents\IDOT Offices\District 9\Projects\78554\Drawings\CADsheets\78554.sht.dgn		DRAWN -	REVISED -
Default		CHECKED -	REVISED -
	PLOT SCALE = 100.0000' / in.	DATE -	REVISED -
	PLOT DATE = 12/8/2016		

**STATE OF ILLINOIS
DEPARTMENT OF TRANSPORTATION**

**LOCATION #1
4513 NORTH LAKE ROAD, PINCKNEYVILLE, IL 62274**

SCALE: SHEET OF SHEETS STA. TO STA.

F.A.P. RTE.	SECTION	COUNTY	TOTAL SHEETS	SHEET NO.
13/127	D9 DEMOLITION 2017-1	PERRY	12	8
CONTRACT NO. 78554			ILLINOIS FED. AID PROJECT	



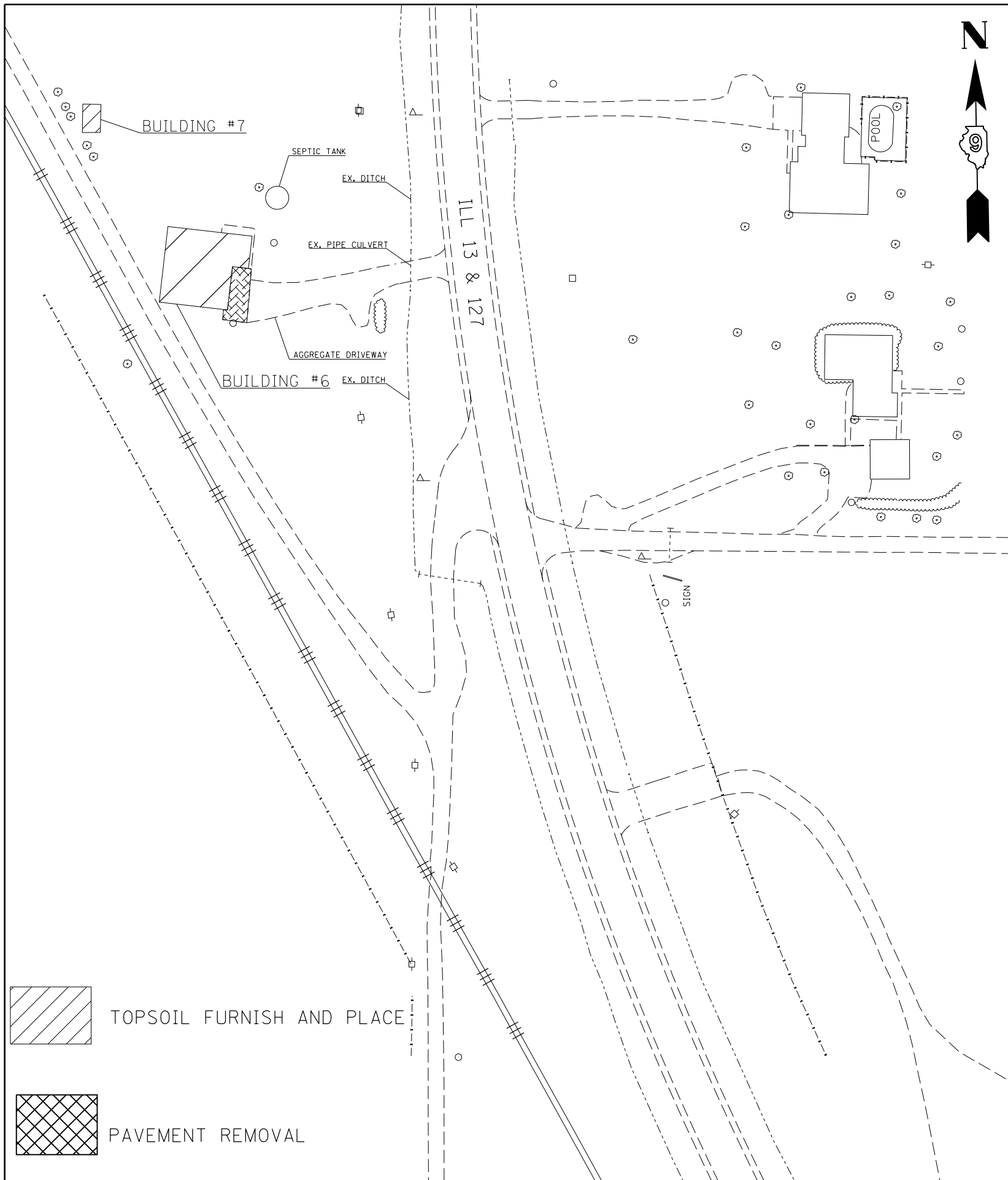
FILE NAME =	USER NAME = jacksonc	DESIGNED -	REVISED -
p:\11\084EBID\INTEG\illinois.gov\PWIDOT\Documents\IDOT Offices\District 9\Projects\7855\DRAWING\CAD\Sheets\78554.sht.dgn		CHECKED -	REVISED -
Default	PLOT SCALE = 100.0000' / in.	DATE -	REVISED -
	PLOT DATE = 12/8/2016		

STATE OF ILLINOIS
DEPARTMENT OF TRANSPORTATION

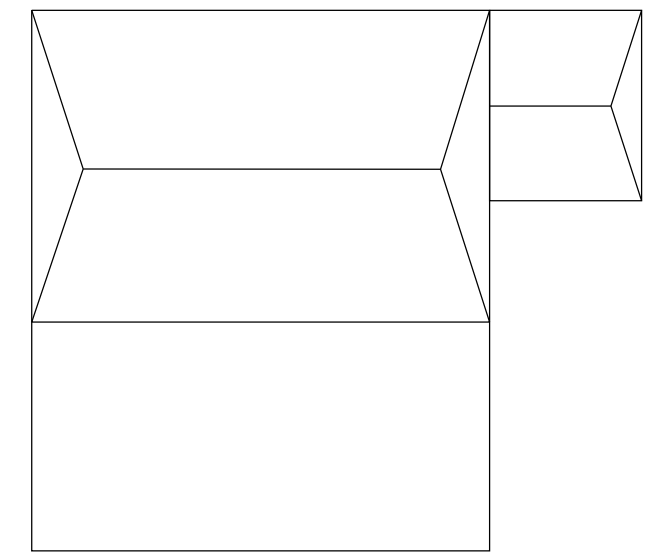
LOCATION #2
4459 SOUTH LAKE ROAD, PINCKNEYVILLE, IL 62274

SCALE: SHEET OF SHEETS STA. TO STA.

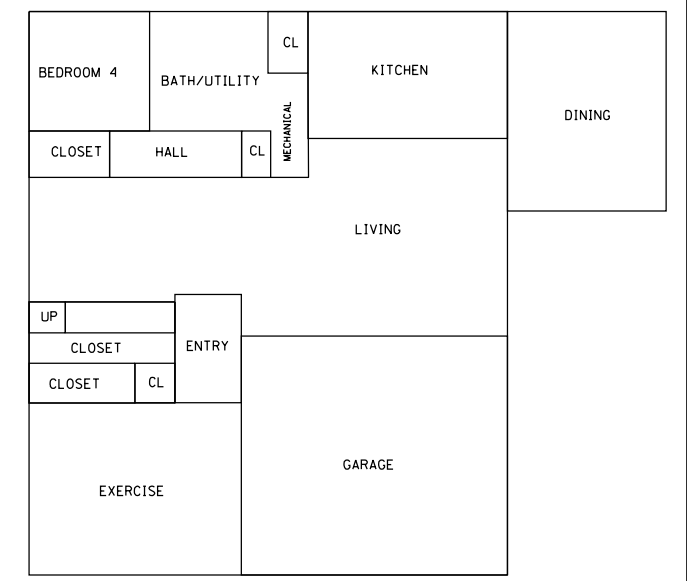
F.A.P. RTE.	SECTION	COUNTY	TOTAL SHEETS	SHEET NO.
13/127	D9 DEMOLITION 2017-1	PERRY	12	9
CONTRACT NO. 78554			ILLINOIS FED. AID PROJECT	



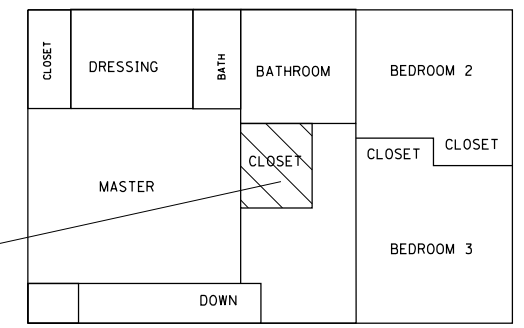
BUILDING #6: NON-FRIABLE ASBESTOS



ROOF PLAN

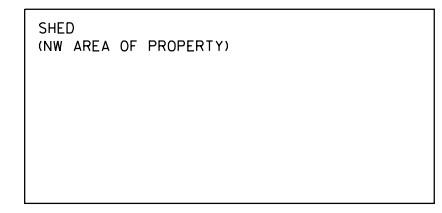


FIRST FLOOR



SECOND FLOOR

BUILDING #7:



GARAGE

VINYL SHEET FLOORING
28 SF

FILE NAME =	USER NAME = jacksonec	DESIGNED -	REVISED -
pw:\IL\084EBIDINTEG\illinois.gov\PWIDOT\Documents\DOT Offices\District 9\Projects\78554\Drawings\CAD\Sheets\78554.sht.dgn		DRAWN -	REVISED -
Default	PLOT SCALE = 100.0000' / 1".	CHECKED -	REVISED -
	PLOT DATE = 12/8/2016	DATE -	REVISED -

STATE OF ILLINOIS
DEPARTMENT OF TRANSPORTATION

LOCATION #3	
3495 STATE ROUTE, PINCKNEYVILLE, IL 62274	
SCALE:	SHEET OF SHEETS STA. TO STA.

F.A.P. RTE.	SECTION	COUNTY	TOTAL SHEETS	SHEET NO.
13/127	D9 DEMOLITION 2017-1	PERRY	12	10
CONTRACT NO. 78554				
ILLINOIS FED. AID PROJECT				



ILL 13 AND 127

CRIPPLE CREEK RD.

SIDEWALK #1

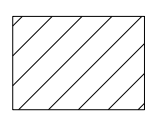
FLAGPOLE

BUILDING #8

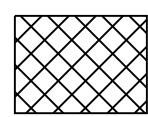
SIDEWALK #2

BUILDING #9

SIDEWALK #3

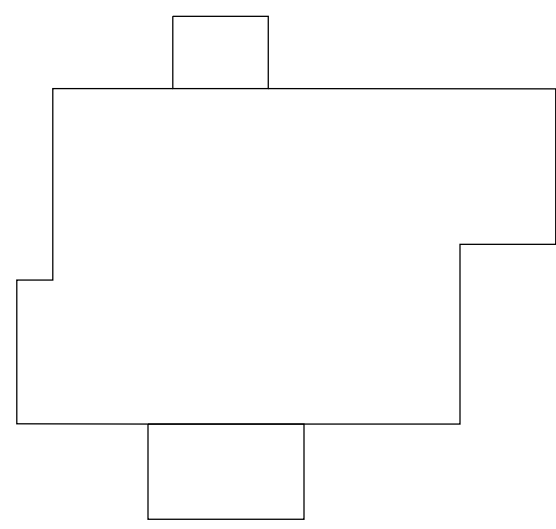


TOPSOIL FURNISH AND PLACE

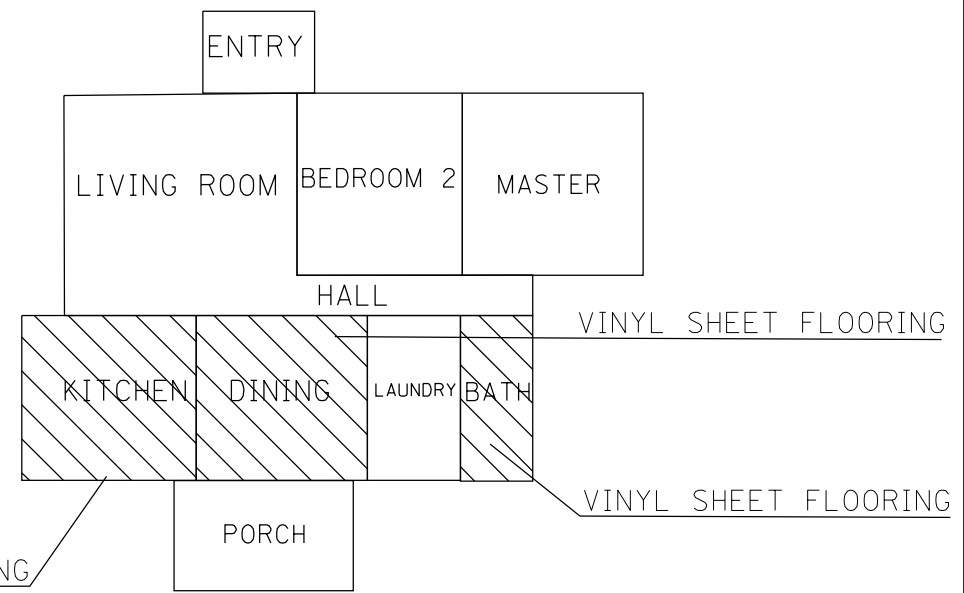


PAVEMENT REMOVAL

BUILDING #8: NON-FRIABLE ASBESTOS



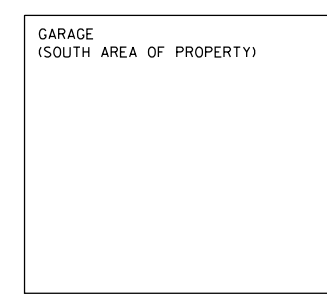
ROOF PLAN



MAIN FLOOR

*TOTAL 340 SF OF NON-FRIABLE ASBESTOS

BUILDING #9:



GARAGE

FILE NAME =	USER NAME = jacksonec	DESIGNED -	REVISED -
pw:\IL\084EBID\INTEG\illinois.gov\PI\DOT\Documents\IDOT Offices\District 9\Projects\78554\Drawings\CAD\Sheets\78554.sht.dgn		DRAWN	REVISED -
Default	PLOT SCALE = 100.0000' / in.	CHECKED -	REVISED -
	PLOT DATE = 12/8/2016	DATE -	REVISED -

**STATE OF ILLINOIS
DEPARTMENT OF TRANSPORTATION**

**LOCATION #4
#8 CRIPPLE CREEK, PINCKNEYVILLE, IL 62274**

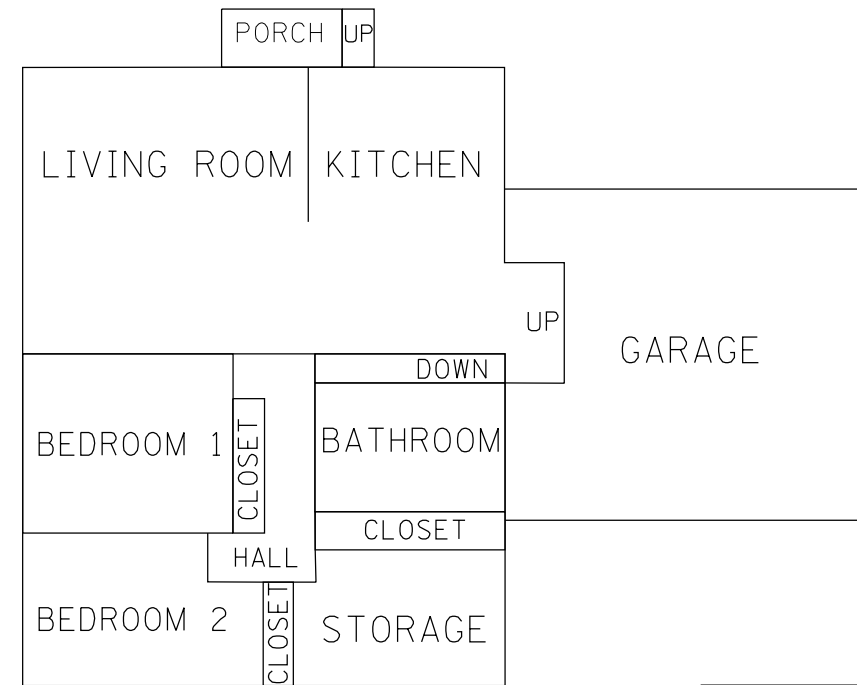
SCALE: SHEET OF SHEETS STA. TO STA.

F.A.P. RTE.	SECTION	COUNTY	TOTAL SHEETS	SHEET NO.
13/127	D9 DEMOLITION 2017-1	PERRY	12	11
CONTRACT NO. 78554			ILLINOIS FED. AID PROJECT	

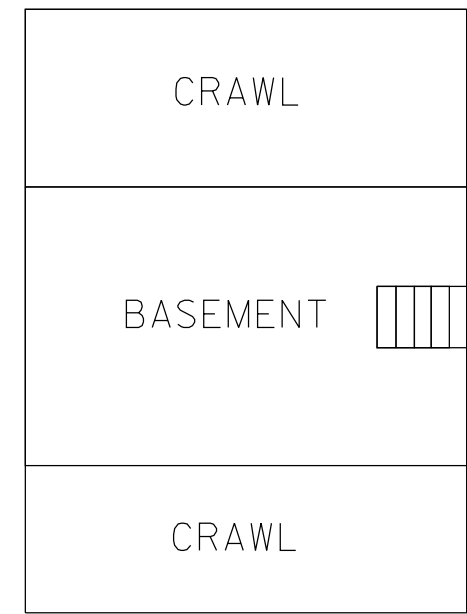


IL 13

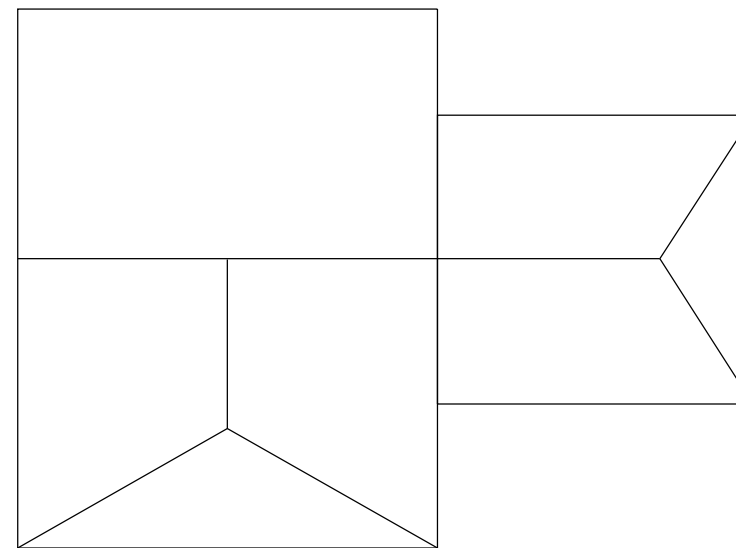
BUILDING #10:



MAIN FLOOR

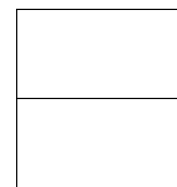


BASEMENT



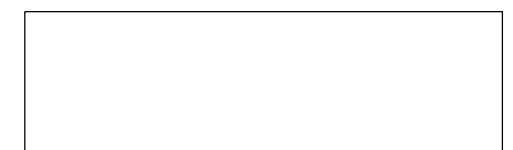
ROOF PLAN

BUILDING #11:

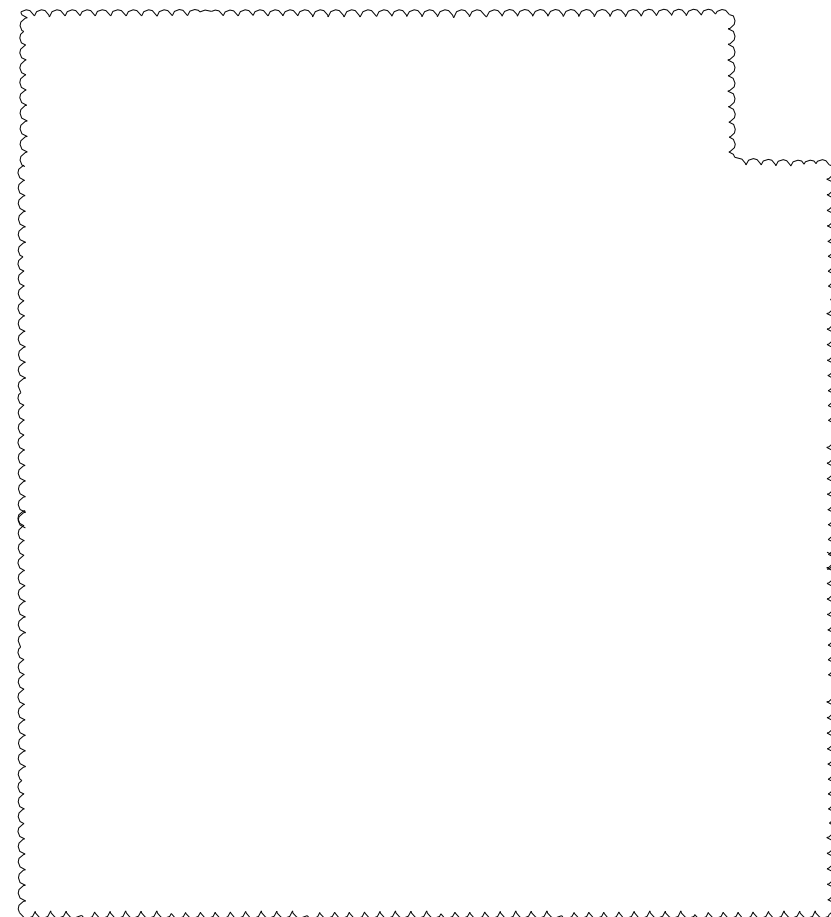


SHED

BUILDING #12:



BARN



BUILDING #10

FENCE (160')

WATER CISTERN

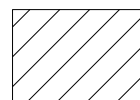
WELL

SEPTIC TANK

PROPANE TANK

BUILDING #11

BUILDING #12



TOPSOIL FURNISH AND PLACE



PAVEMENT REMOVAL

FILE NAME =	USER NAME = jacksonec	DESIGNED -	REVISED -
pw:\IL\084EBIDINTEG\Illinois.gov\PWIDOT\Documents\IDOT Offices\District 9\Projects\78554\DRAWING\CAD\Sheets\78554.sht.dgn		CHECKED -	REVISED -
Default	PLOT SCALE = 100.0000' / 1" =	DATE -	REVISED -
	PLOT DATE = 12/8/2016		

STATE OF ILLINOIS
DEPARTMENT OF TRANSPORTATION

LOCATION #5
633 STATE ROUTE 13127, DU QUOIN, IL 62274

SCALE: SHEET OF SHEETS STA. TO STA.

F.A.P. RTE.	SECTION	COUNTY	TOTAL SHEETS	SHEET NO.
13/127	D9 DEMOLITION 2017-1	PERRY	12	12
CONTRACT NO. 78554				
ILLINOIS FED. AID PROJECT				