



# INDEX OF SHEETS

SHEET NO.	DESCRIPTION
1	COVER SHEET
2	INDEX OF SHEETS, STANDARDS AND GENERAL NOTES
3	SUMMARY OF QUANTITIES
4-8	LOCATION MAPS
9	ENTRANCE AND EXIT RAMP CLOSURE DETAILS (TC-8)
10	TRAFFIC CONTROL DETAILS FOR SINGLE AND MULTI-LANE WEAVES (TC-9)
11	TRAFFIC CONTROL DETAILS FOR SHOULDER CLOSURES AND PARTIAL RAMP CLOSURES (TC-17)
12	MILE POST MARKERS - GORE SIGNS MAJOR GUIDE SIGN LAYOUT - ARROWS (TC-27)

# LIST OF STATE STANDARDS

STANDARD NO.	DESCRIPTION
701006-05	OFF-RD OPERATIONS, 2L, 2W, 15' to 24" FROM PAVEMENT EDGE
701011-04	OFF-RD MOVING OPERATIONS, 2L,2W, DAY ONLY
701101-05	OFF-RD OPERATIONS, MULTILANE, 15' TO 24" FROM PAVEMENT EDGE
701106-02	OFF-RD OPERATIONS, MULTILANE, MORE THAN 15' AWAY
701301-04	LANE CLOSURE, 2L, 2W, SHORT TIME OPERATIONS
701400-09	APPROACH TO LANE CLOSURE, FREEWAY/EXPRESSWAY
701401-10	LANE CLOSURE, FREEWAY/EXPRESSWAY
701411-09	LANE CLOSURE, MULTILANE, AT ENTRANCE OR EXIT RAMPS, FOR SPEEDS ≥ 45 MPH
701426-09	LANE CLOSURE, MULTILANE, INTERMITTENT OR MOVING OPERATIONS, FOR SPEEDS ≥ 45 MPH
701427-05	LANE CLOSURE, MULTILANE, INTERMITTENT OR MOVING OPERATIONS, FOR SPEEDS ≤ 40 MPH
701428-01	TRAFFIC CONTROL SETUP AND REMOVAL FREEWAY/EXPRESSWAY
701446-08	TWO LANE CLOSURE, FREEWAY/EXPRESSWAY
701901-06	TRAFFIC CONTROL DEVICES
720001-01	SIGN PANEL MOUNTING DETAILS
720006-04	SIGN PANEL ERECTION DETAILS
720011-01	METAL POSTS FOR SIGNS, MARKERS AND DELINEATORS
720016-03	MAST ARM MOUNTED STREET NAME SIGNS
720021-02	SIGN PANELS EXTRUDED ALUMINUM TYPE
728001-01	TELESCOPING STEEL SIGN SUPPORT
729001-01	APPLICATIONS OF TYPES A AND B METAL POSTS (FOR SIGNS AND MARKERS)
731001-01	BASE FOR TELESCOPING STEEL SIGN SUPPORT

# GENERAL NOTES

BEFORE STARTING ANY EXCAVATION, THE CONTRACTOR SHALL CALL "JULIE" AT 800-892-0123 OR 811 FOR FIELD LOCATIONS OF BURIED ELECTRIC, TELEPHONE AND GAS FACILITIES. (48 HOUR NOTIFICATION IS REQUIRED)

BEFORE STARTING ANY EXCAVATION, THE CONTRACTOR SHALL CALL "C.U.A.N." (CHICAGO UTILITY ALERT NETWORK) AT (312) 744-7000 FOR FIELD LOCATIONS OF BURIED ELECTRIC, TELEPHONE AND GAS UTILITIES. (48 HOUR NOTIFICATION IS REQUIRED).

ALL WORK SHALL BE DONE AS INDICATED IN THE WORK ORDER FORM.

NO MATERIAL SHALL BE LEFT ON OR NEAR THE ROADWAY DURING NON-WORKING HOURS.

ANY HARDWARE REFERENCED IN THE PLANS OR SPECIAL PROVISIONS SHALL BE SUPPLIED AND INSTALLED BY THE CONTRACTOR. THE COST OF THE HARDWARE IS INCLUDED IN THE COST OF THE ITEMS INVOLVED.

REMOVAL OF DAMAGED MATERIALS SHALL INCLUDE DISMANTLING, LOADING, HAULING AND DISPOSAL. THE WORK SITE SHALL BE LEFT IN A SAFE AND ORDERLY CONDITION.

THE CONTRACTOR SHALL PICK UP THE SIGNS FROM ANY ONE OF THE THREE (3) SIGN SHOPS THAT ISSUED THEM THE WORK ORDER.

THE SIGN SHOP LOCATIONS ARE AS FOLLOWS:

(ESS)  
IDOT ELGIN SIGN SHOP  
595 S. STATE STREET, DRIVE F, DOOR 22  
ELGIN, IL 60123  
(847) 741-5302

(SSSS)  
IDOT SOUTHSIDE SIGN SHOP  
15940 PULASKI RD.  
MARKHAM, IL 60426  
(708) 597-9800

(NSSS)  
IDOT NORTHSIDE SIGN SHOP  
7151 W. FOREST PRESERVE DRIVE  
CHICAGO, IL 60634  
(773) 685-8386

FILE NAME *	USER NAME * pyzronowski	DESIGNED -	REVISED -	<b>STATE OF ILLINOIS DEPARTMENT OF TRANSPORTATION</b>	<b>INDEX OF SHEETS, STATE STANDARDS &amp; GENERAL NOTES</b>	F.A. RTE.	SECTION	COUNTY	TOTAL SHEETS	SHEET NO.	
pw\11084E810\INTEG.illinois.gov\PI001\Documents\IDOT Office\District 1\Projects\01864\Drawings\Design\0186417-sht-plan.dgn	PLT SCALE * 100.0000 / in.	CHECKED -	REVISED -			VAR.	2016-062SG	VARIOUS	12	2	
PLT DATE * 12/13/2016	DATE -	REVISED -	SCALE:			SHEET NO.	OF	SHEETS	STA.	TO	STA.
								FED. ROAD DIST. NO.		ILLINOIS FED. AID PROJECT	
						CONTRACT NO. 62055					

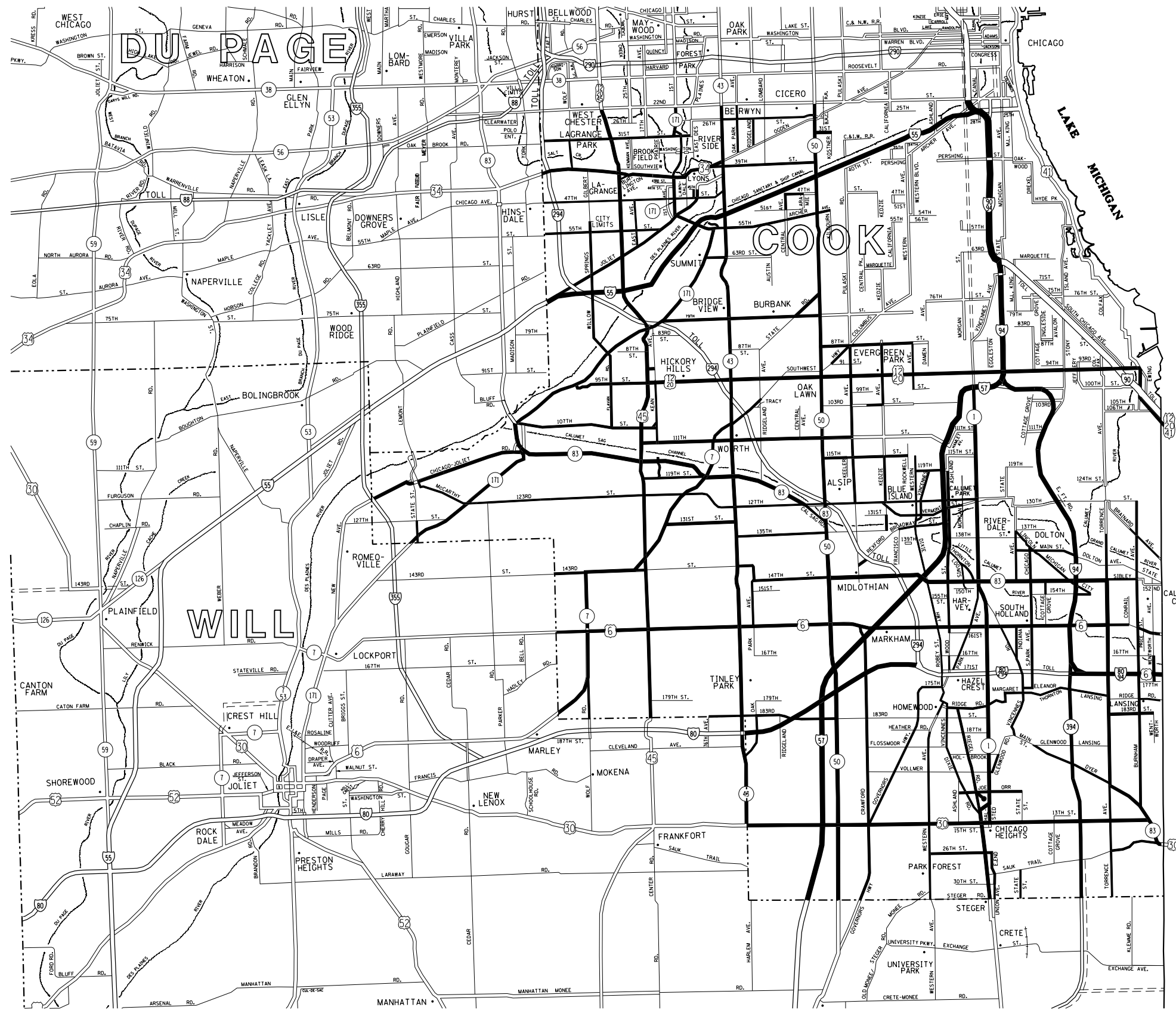
URBAN 100% STATE

SUMMARY OF QUANTITIES				CONSTRUCTION TYPE CODE 0021					
CODE NO	ITEM	UNIT	TOTAL QUANTITIES	0021					
63500105	DELINEATORS	EACH	100	100					
70200100	NIGHTTIME WORK ZONE LIGHTING	L SUM	1	1					
72300100	INSTALL EXISTING SIGN PANEL	SQ FT	250	250					
72400100	REMOVE SIGN PANEL ASSEMBLY - TYPE A	EACH	600	600					
72400200	REMOVE SIGN PANEL ASSEMBLY - TYPE B	EACH	200	200					
72400330	REMOVE SIGN PANEL - TYPE 3	SQ FT	500	500					
72400500	RELOCATE SIGN PANEL ASSEMBLY - TYPE A	EACH	100	100					
72400600	RELOCATE SIGN PANEL ASSEMBLY - TYPE B	EACH	75	75					
72400730	RELOCATE SIGN PANEL - TYPE 3	SQ FT	500	500					
72800100	TELESCOPING STEEL SIGN SUPPORT	FOOT	5000	5000					
73000100	WOOD SIGN SUPPORT	FOOT	2500	2500					
X0325130	TUBULAR TRAFFIC SIGN POST	EACH	100	100					
X0326174	REPAIR EXISTING SIGN ASSEMBLY	EACH	100	100					
X0326181	INSTALL STREET SIGN	SQ FT	2000	2000					
X0327356	INSTALL ROUND STEEL SIGN SUPPORT	FOOT	4	4					
X0877000	STRAIGHTEN EXISTING SIGN POST - TYPE A ASSEMBLY	EACH	125	125					

SUMMARY OF QUANTITIES				CONSTRUCTION TYPE CODE					
CODE NO	ITEM	UNIT	TOTAL QUANTITIES						
X0877100	STRAIGHTEN EXISTING SIGN POST - TYPE B ASSEMBLY	EACH	75	75					
X0877200	STRAIGHTEN EXISTING SIGN POST - TYPE 3 ASSEMBLY	EACH	25	25					
X2010100	TREE LIMB REMOVAL (4 TO 10 INCHES DIAMETER)	EACH	25	25					
X7200150	INSTALL SIGN PANEL - TYPE 1 (EXPRESSWAY)	SQ FT	1000	1000					
X7200250	INSTALL SIGN PANEL - TYPE 2 (EXPRESSWAY)	SQ FT	3000	3000					
X7200350	INSTALL SIGN PANEL - TYPE 3 (EXPRESSWAY)	SQ FT	300	300					
X7230100	INSTALL SIGN PANEL - TYPE 1	SQ FT	10000	10000					
X7230200	INSTALL SIGN PANEL - TYPE 2	SQ FT	1000	1000					
X7230203	INSTALL SIGN PANEL - TYPE 3	SQ FT	200	200					
X7240195	REMOVE EXISTING SIGN PANEL	EACH	1000	1000					
X7270025	REMOVE EXISTING SIGN SUPPORT	EACH	50	50					
X7270030	RELOCATE EXISTING SIGN SUPPORT	EACH	25	25					
Z0019307	HOLES DRILLED	EACH	100	100					
Z0024478	FLEXIBLE DELINEATORS	EACH	100	100					

16

FILE NAME =	USER NAME =	DESIGNED -	REVISED -	<b>STATE OF ILLINOIS DEPARTMENT OF TRANSPORTATION</b>	<b>SUMMARY OF QUANTITIES</b>	F.A. RTE.	SECTION	COUNTY	TOTAL SHEETS	SHEET NO.	
		CHECKED -	REVISED -			VAR.	2016-0625G	VARIOUS	12	3	
		DATE	REVISED -			CONTRACT NO. 62055					
						SCALE: SHEET NO. OF SHEETS STA. TO STA.		FED. ROAD DIST. NO. 1 ILLINOIS FED. AID PROJECT			



**SOUTH SIDE SIGN SHOP JURISDICTION**

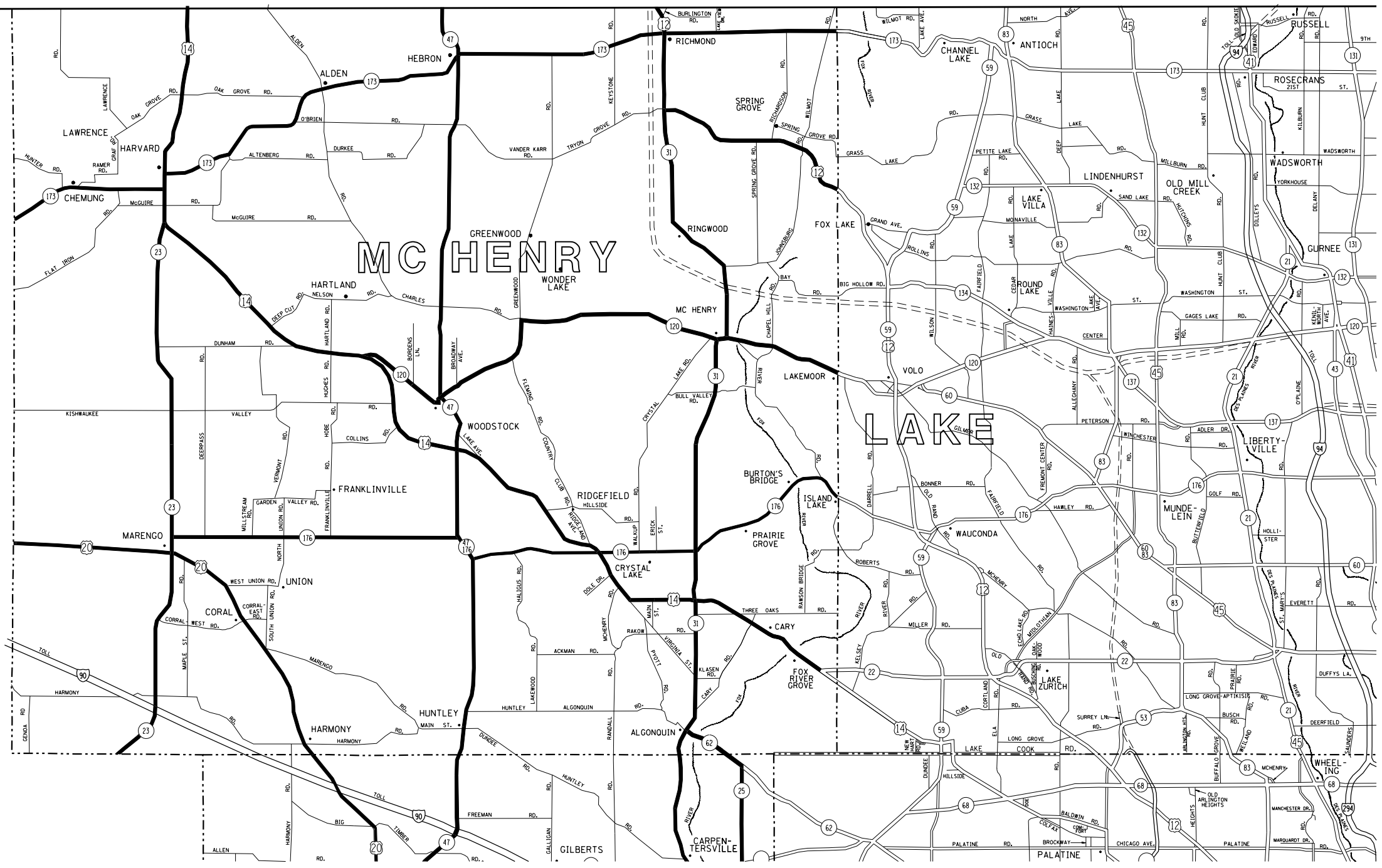
- DISTRICT NO. 1
- STATE HIGHWAYS & EXPRESSWAYS WITHIN STATE JURISDICTION (EXCEPT TOLLWAYS)
  - - - FUTURE HIGHWAYS
  - VARIOUS AGENCIES HIGHWAYS

FILE NAME =	USER NAME = pyzanoskib	DESIGNED -	REVISED -	<b>STATE OF ILLINOIS DEPARTMENT OF TRANSPORTATION</b>	<b>SOUTH SIDE SIGN SHOP JURISDICTION SIGN INSTALLATION AND REPAIR</b>	F.A. RTE.	SECTION	COUNTY	TOTAL SHEETS	SHEET NO.	
p:\11\084EBID\INTEG\11\inois.gov\PIWIDOT\Documents\DOT Offices\District 1\Projects\DI084\Drawings\Design\DI06417-sht-plan.dgn		CHECKED -	REVISED -			VAR.	2016-0625G	VARIOUS	12	4	
PLOT SCALE = 100.0000' / 1"		DATE -	REVISED -			CONTRACT NO. 62D55					
PLOT DATE = 11/1/2016						FED. ROAD DIST. NO.	ILLINOIS	FED. AID PROJECT			
					SCALE:	SHEET NO.	OF	SHEETS	STA.	TO	STA.

# WISCONSIN



**ELGIN SIGN SHOP JURISDICTION**



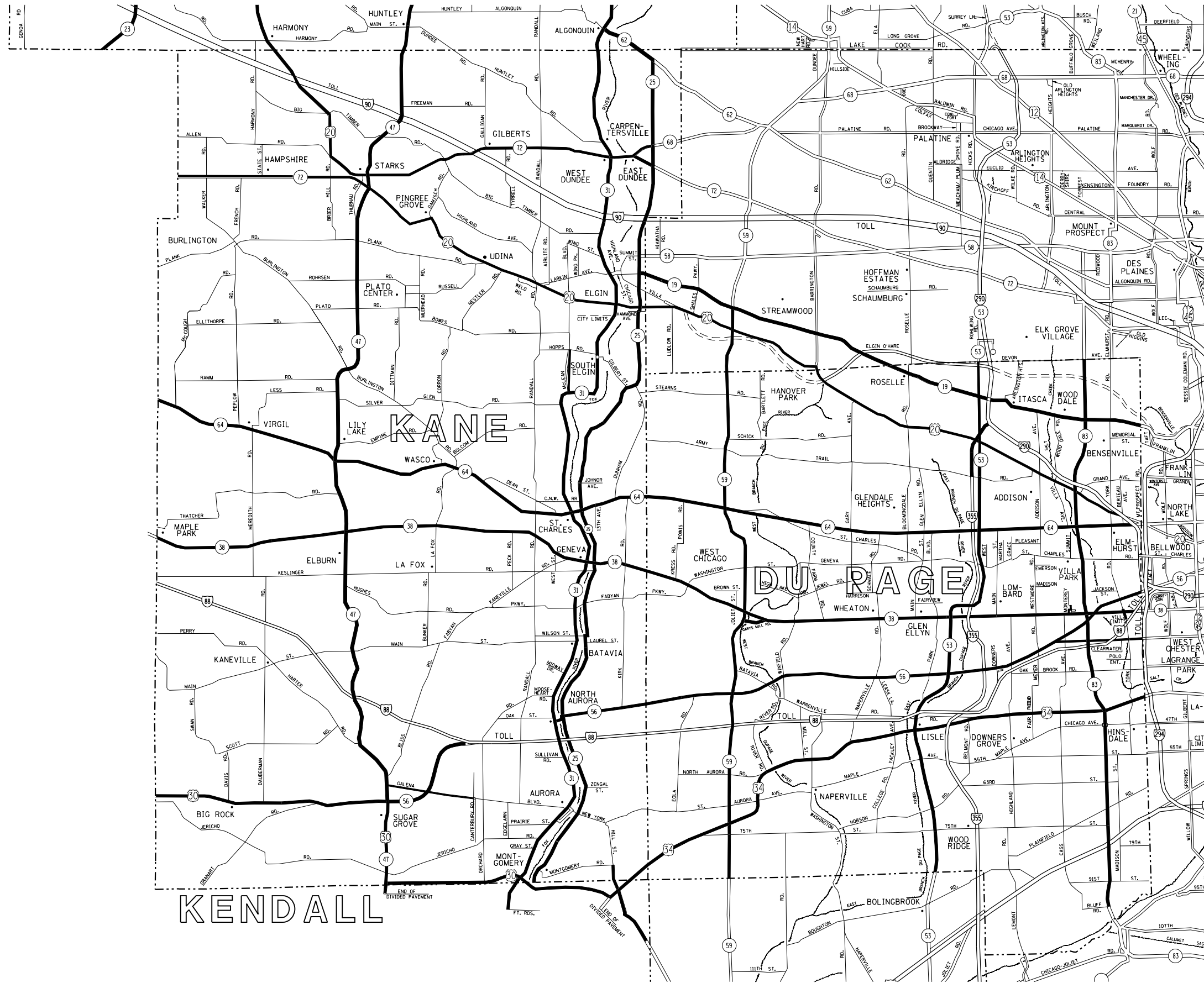
- DISTRICT NO. 1
- STATE HIGHWAYS & EXPRESSWAYS WITHIN STATE JURISDICTION (EXCEPT TOLLWAYS)
  - - - FUTURE HIGHWAYS
  - VARIOUS AGENCIES HIGHWAYS

SEE NEXT SHEET FOR ELGIN SIGN SHOP CONTINUATION

FILE NAME =	USER NAME = pyzanoskrib	DESIGNED -	REVISED -	<b>STATE OF ILLINOIS DEPARTMENT OF TRANSPORTATION</b>	<b>ELGIN SIGN SHOP JURISDICTION SHEET 1 OF 3 SIGN INSTALLATION AND REPAIR</b>	F.A. RTE.	SECTION	COUNTY	TOTAL SHEETS	SHEET NO.
pw:\IL084EBIDINTEG.illinois.gov\PIWID\Documents\IDOT Offices\District 1\Projects\DI084EBID\Design\DI06417-sht-plan.dgn		DRAWN -	REVISED -			VAR.	2016-0625G	VARIOUS	12	5
PLOT SCALE = 100.0000' / 1" =		CHECKED -	REVISED -			CONTRACT NO. 62D55				
PLOT DATE = 11/1/2016		DATE -	REVISED -			FED. ROAD DIST. NO. ILLINOIS FED. AID PROJECT				

SCALE: SHEET NO. OF SHEETS STA. TO STA.

SEE PREVIOUS SHEET FOR ELGIN SIGN SHOP CONTINUATION



**ELGIN SIGN SHOP JURISDICTION**

- DISTRICT NO. 1
- STATE HIGHWAYS & EXPRESSWAYS WITHIN STATE JURISDICTION (EXCEPT TOLLWAYS)
  - - - FUTURE HIGHWAYS
  - VARIOUS AGENCIES HIGHWAYS

FILE NAME =	USER NAME = pyznowskirb	DESIGNED -	REVISED -
pw:\IL084EBIDINTEG.illinois.gov\PIWIDOT\Documents\DOT Offices\District 1\Projects\DI084EBID\Design\DI06417-sht-plan.dgn		CHECKED -	REVISED -
		DATE -	REVISED -

**STATE OF ILLINOIS  
DEPARTMENT OF TRANSPORTATION**

ELGIN SIGN SHOP JURISDICTION SHEET 2 OF 3  
SIGN INSTALLATION AND REPAIR

SCALE: SHEET NO. OF SHEETS STA. TO STA.

F.A. RE.	SECTION	COUNTY	TOTAL SHEETS	SHEET NO.
VAR.	2016-0625G	VARIOUS	12	6
			CONTRACT NO. 62D55	
FED. ROAD DIST. NO.		ILLINOIS FED. AID PROJECT		

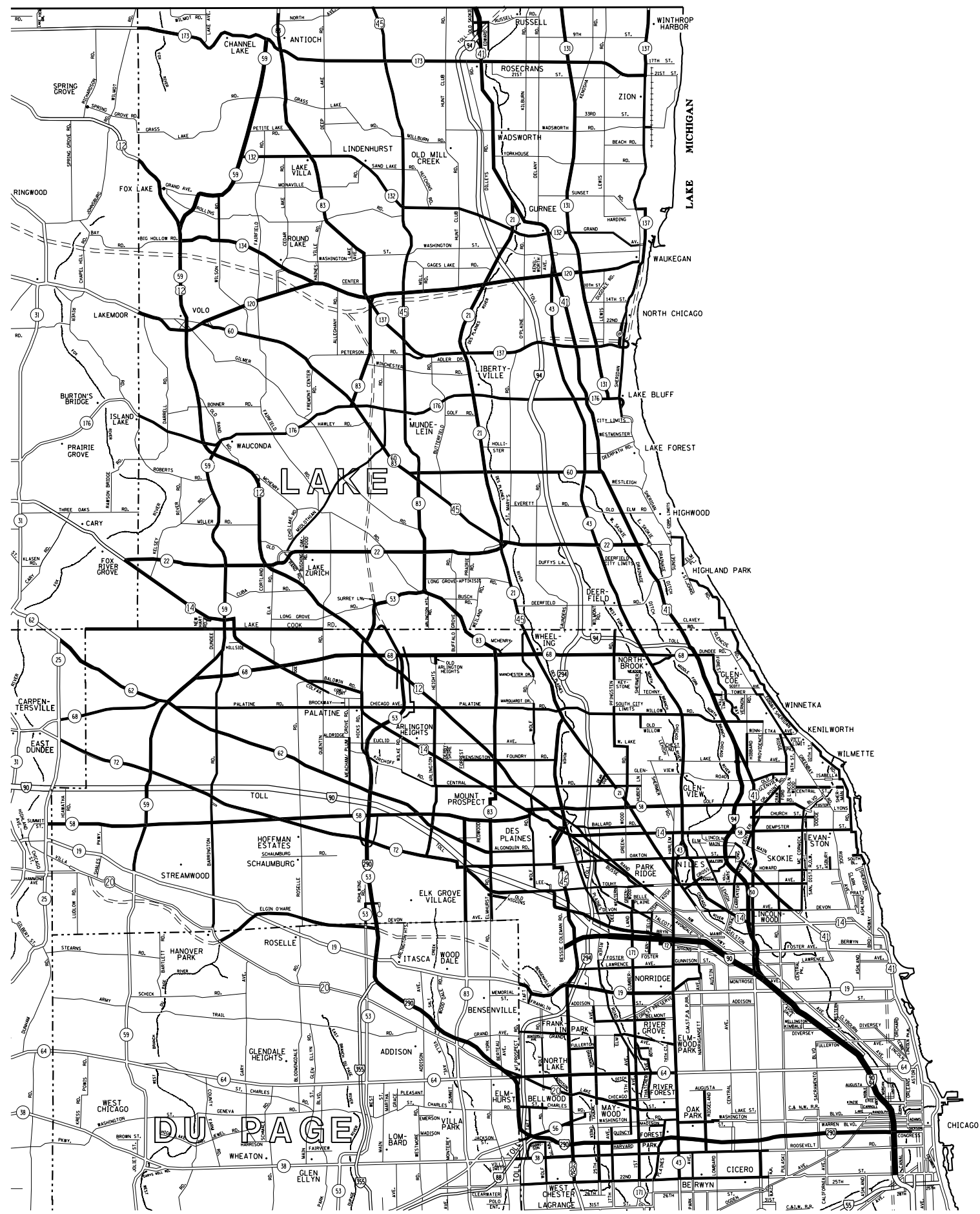


**ELGIN SIGN SHOP JURISDICTION**

- DISTRICT NO. 1
- STATE HIGHWAYS & EXPRESSWAYS WITHIN STATE JURISDICTION (EXCEPT TOLLWAYS)
  - - - FUTURE HIGHWAYS
  - VARIOUS AGENCIES HIGHWAYS

FILE NAME =	USER NAME = pyznowskirb	DESIGNED -	REVISED -	<b>STATE OF ILLINOIS DEPARTMENT OF TRANSPORTATION</b>	<b>ELGIN SIGN SHOP JURISDICTION 3 OF 3 SIGN INSTALLATION AND REPAIR</b>				F.A. RTÉ.	SECTION	COUNTY	TOTAL SHEETS	SHEET NO.
pw\1\084EBIDINTEG.11\inois.gov\PIWIDOT\Documents\DOT Offices\District 1\Projects\DI084EBID\Design\DI06417-sht-plan.dgn		REVISIONS	REVISIONS						VAR.	2016-0625G	VARIOUS	12	7
PLOT SCALE = 100.0000' / 1" =	CHECKED -	REVISIONS	REVISIONS		CONTRACT NO. 62D55								
PLOT DATE = 11/1/2016	DATE -	REVISIONS	REVISIONS		SCALE:	SHEET NO.	OF SHEETS	STA.	TO STA.	FED. ROAD DIST. NO.	ILLINOIS FED. AID PROJECT		



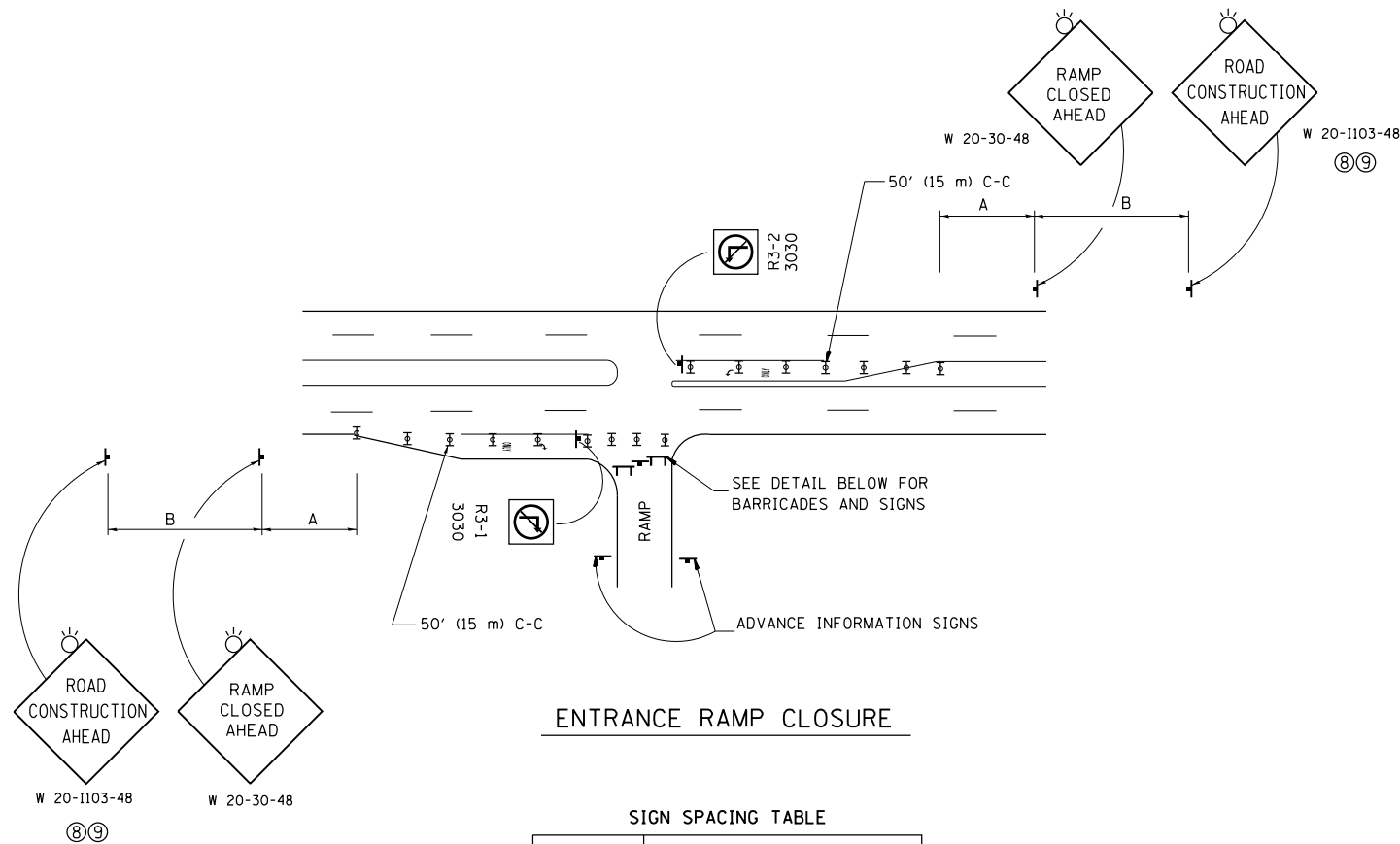


**█ NORTHSIDE SIGN SHOP JURISDICTION**

- DISTRICT NO. 1
- STATE HIGHWAYS & EXPRESSWAYS WITHIN STATE JURISDICTION (EXCEPT TOLLWAYS)
  - - - FUTURE HIGHWAYS
  - VARIOUS AGENCIES HIGHWAYS

FILE NAME = p:\1\084EBID\INTEG\11nois.gov\PIWIDOT\Documents\DOT Offices\District 1\Projects\DI084EBID\Design\DI06417-sht-plan.dgn	USER NAME = pyznanowski	DESIGNED -	REVISED -	<b>STATE OF ILLINOIS DEPARTMENT OF TRANSPORTATION</b>	<b>NORTHSIDE SIGN SHOP JURISDICTION SIGN INSTALLATION AND REPAIR</b>				F.A. RTE.	SECTION	COUNTY	TOTAL SHEETS	SHEET NO.
	PLOT SCALE = 100.0000' / 1" =	CHECKED -	REVISED -						VAR.	2016-0625G	VARIOUS	12	8
PLOT DATE = 11/1/2016	DATE -	REVISED -	REVISED -	SCALE: SHEET NO. OF SHEETS STA. TO STA.				FED. ROAD DIST. NO. ILLINOIS FED. AID PROJECT					
								<b>CONTRACT NO. 62D55</b>					



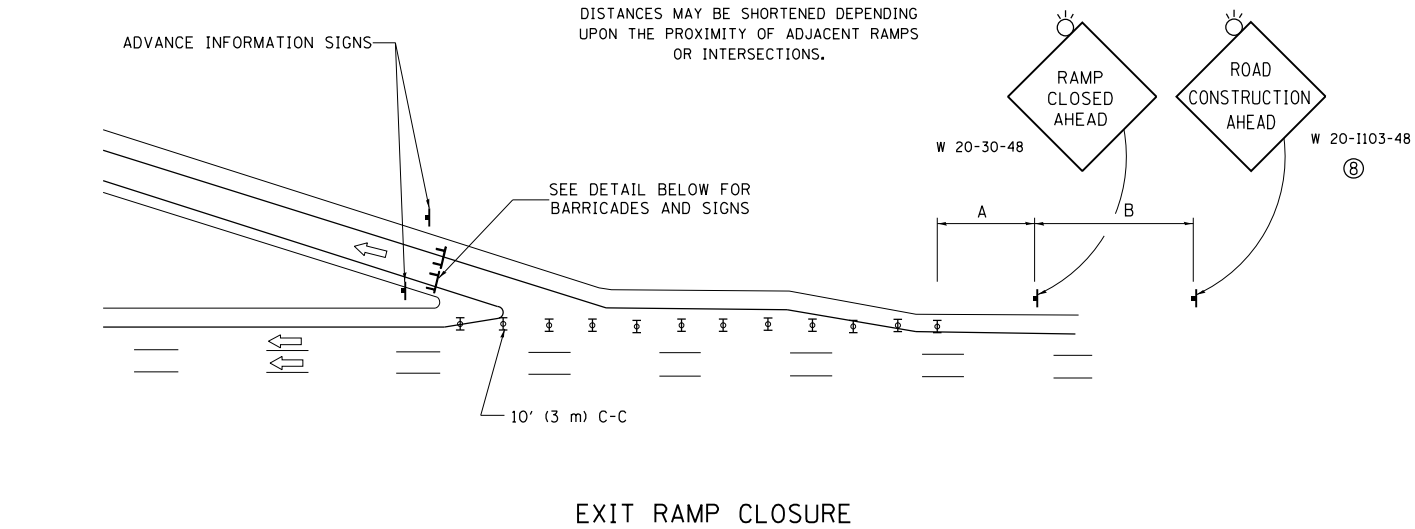


**ENTRANCE RAMP CLOSURE**

**SIGN SPACING TABLE**

FACILITY	DISTANCE BETWEEN SIGNS	
	A	B
EXPRESSWAY >24 HOURS	1000' (300 m)	1500' (450 m)
EXPRESSWAY <24 HOURS	500' (150 m)	500' (150 m)
ARTERIAL 55 MPH	500' (150 m)	500' (150 m)
ARTERIAL 50-45 MPH	350' (100 m)	350' (100 m)
ARTERIAL <45 MPH	200' (60 m)	200' (60 m)

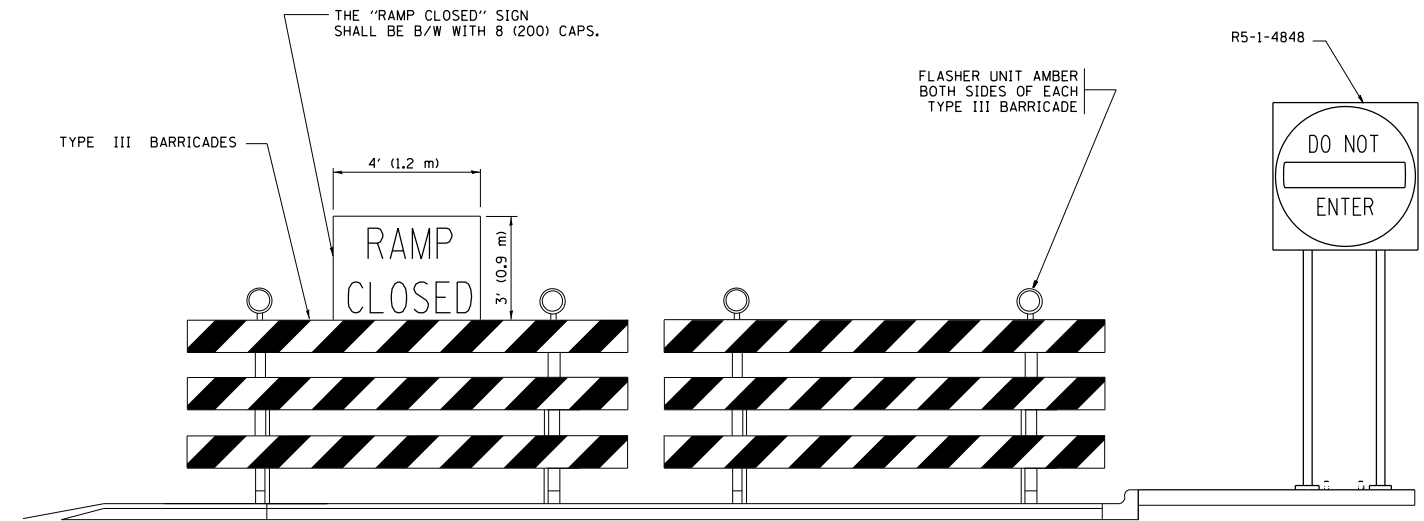
DISTANCES MAY BE SHORTENED DEPENDING UPON THE PROXIMITY OF ADJACENT RAMPS OR INTERSECTIONS.



**EXIT RAMP CLOSURE**

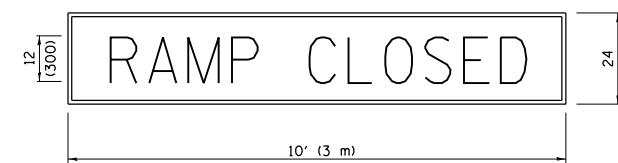
**SYMBOLS**

- ⊥ TYPE II BARRICADE OR DRUM WITH STEADY BURN MONO-DIRECTIONAL LIGHT
- ⊓ TYPE III BARRICADE WITH 2 FLASHING LIGHTS



**DETAIL FOR REQUIRED BARRICADES & SIGNS**

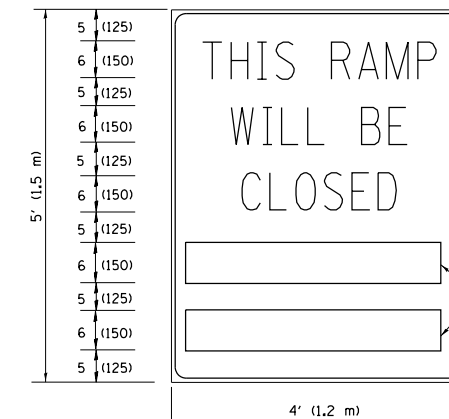
**RAMP CLOSURE ADVANCE WARNING SIGN**



BLACK LEGEND ON ORANGE BACKGROUND MOUNTED DIAGONALLY  
E MOD FONT  
1 (25) BORDER

THESE SIGNS ARE REQUIRED ON ALL THE EXIT GUIDE SIGNS FOR EXIT RAMPS THAT WILL BE CLOSED FOR MORE THAN FOUR (4) CONSECUTIVE DAYS.

**RAMP CLOSURE ADVANCE INFORMATION SIGN**



BLACK LEGEND ON WHITE BACKGROUND

1/2 (12) BORDER

E MOD FONT

THESE BLANK AREAS SHALL BE FILLED WITH THE DATES AND THE TIME THAT THE RAMP WILL BE CLOSED.

THESE SIGNS ARE REQUIRED ON BOTH SIDES OF THE RAMP, MINIMUM OF 1 WEEK IN ADVANCE OF THE CLOSURE.

THESE SIGNS SHALL BE FABRICATED AND PAID FOR ACCORDING TO THE TEMPORARY INFORMATION SIGNING SPECIAL PROVISION

**GENERAL NOTES:**

- ① CONES MAY BE SUBSTITUTED FOR DRUMS OR TYPE II BARRICADES DURING DAY OPERATIONS. CONES SHALL BE A MINIMUM OF 28 (700) HIGH.
- ② STEADY BURN LIGHTS WILL NOT BE REQUIRED FOR DAY OPERATIONS.
- ③ A FLAGGER SHALL BE POSITIONED AT EACH CLOSED RAMP THAT IS OPEN TO CONSTRUCTION VEHICLES, PRECEDED BY A W20-7 FLAGGER WARNING SIGN.
- ④ ALL ROUTE MARKERS AND TRAILBLAZER ASSEMBLIES WHICH DIRECT MOTORISTS TO A CLOSED ENTRANCE RAMP SHALL BE COVERED WHEN THE RAMP IS CLOSED FOR MORE THAN FOUR (4) DAYS.
- ⑤ THE SIGNING AND BARRICADING WHICH IS REQUIRED BY THIS DETAIL SHALL BE INCLUDED IN THE COST OF TRAFFIC CONTROL AND PROTECTION (EXPRESSWAYS).
- ⑥ AUTHORIZATION FROM THE DISTRICT'S BUREAU OF TRAFFIC IS REQUIRED FOR ALL RAMP CLOSURES.
- ⑦ THE RAMP CLOSURE ADVANCE INFORMATION SIGNS SHALL BE ERECTED IF THE CLOSURE TIME EXCEEDS TWENTY-FOUR (24) HOURS. ADDITIONAL ADVANCE WARNING SIGNS ON EXIT GUIDE SIGNING WILL BE REQUIRED FOR EXIT RAMP CLOSURES THAT EXCEED FOUR (4) DAYS IN LENGTH.
- ⑧ ROAD CONSTRUCTION AHEAD SIGNS MAY BE OMITTED WHEN THIS DETAIL IS USED IN CONJUNCTION WITH OTHER TRAFFIC CONTROL THAT ALREADY INCLUDES A ROAD CONSTRUCTION AHEAD SIGN.
- ⑨ ARTERIAL ROAD CONSTRUCTION AHEAD SIGNS SHALL BE INSTALLED ON THE LEFT SIDE OF TRAFFIC IF THE MEDIAN IS MORE THAN 10 FT WIDE.

ALL DIMENSIONS ARE IN INCHES (MILLIMETERS) UNLESS OTHERWISE SHOWN.

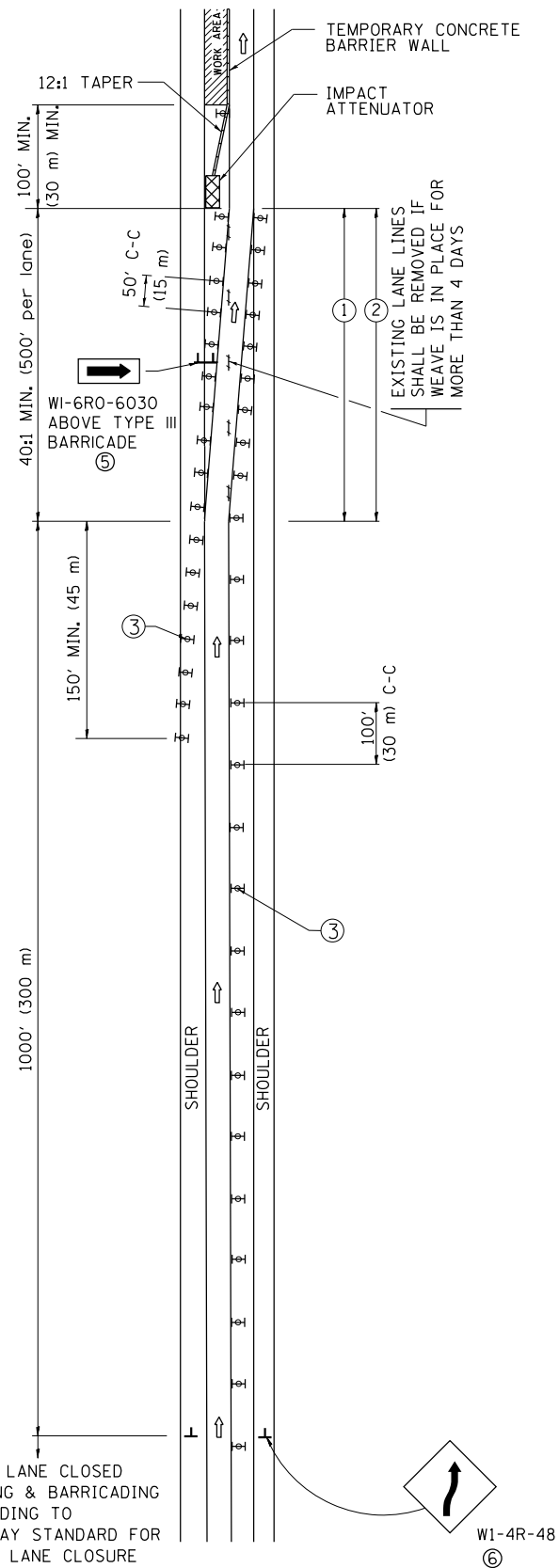
FILE NAME =	USER NAME = pyrzenowski	DESIGNED - -	REVISED - -
pw\11\084EBIDINTEG\illinois.gov\PIWIDOT\Documents\IDOT Offices\District 1\Projects\DI084\Drawings\Design\DI06417-sht-plan.dgn		CHECKED - -	REVISED - -
PLOT SCALE = 100.0000' / 1"		DATE - -	REVISED - MD 06-13
PLOT DATE = 11/17/2016			

**STATE OF ILLINOIS  
DEPARTMENT OF TRANSPORTATION**

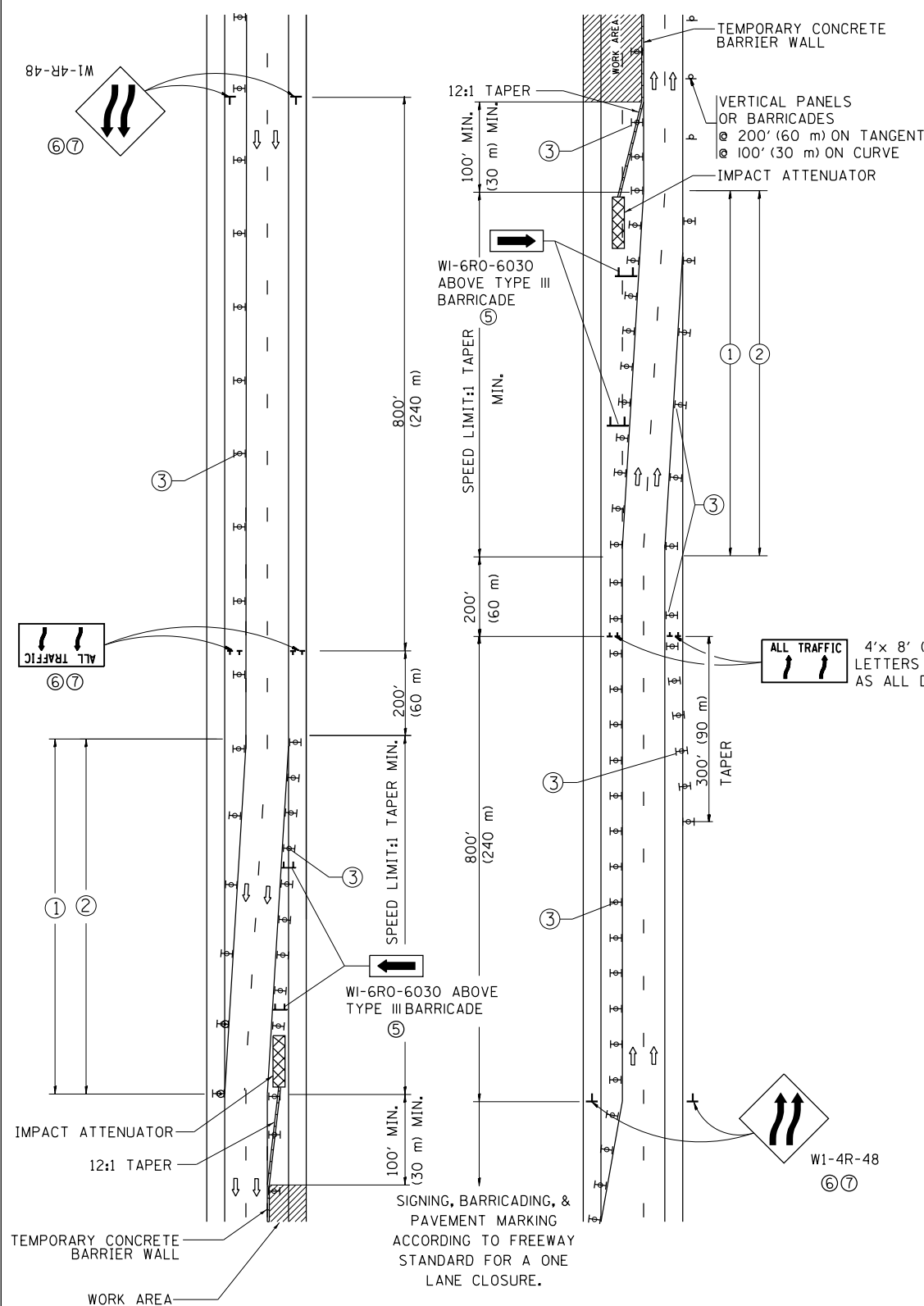
<b>ENTRANCE AND EXIT RAMP CLOSURE DETAILS</b>			
SCALE: NONE	SHEET NO. 1 OF 1 SHEETS	STA.	TO STA.

F.A. RTE.	SECTION	COUNTY	TOTAL SHEETS	SHEET NO.
VAR.	2016-0625G	VARIOUS	12	9
TC-08		CONTRACT NO. 62D55		
FED. ROAD DIST. NO. 1 ILLINOIS FED. AID PROJECT				

# SINGLE LANE WEAVE



# MULTI-LANE WEAVE



- ### GENERAL NOTES
- EXISTING CONFLICTING PAVEMENT MARKING LINES SHALL BE REMOVED. PAVEMENT MARKING REMOVAL SHALL NOT BE REQUIRED FOR SINGLE LANE WEAVES UNDER 4 DAYS IN DURATION.
  - CONTINUOUS REFLECTIVE TEMPORARY PAVEMENT MARKING TAPE SHALL BE PLACED THROUGHOUT THE TAPER AND FOR 300' (90 m) ALONG SIDE THE WORK AREA WHERE THE CLOSURE TIME IS GREATER THAN FOURTEEN DAYS. THE LEFT EDGE LINE SHALL BE YELLOW AND THE RIGHT EDGE LINE SHALL BE WHITE. FOR MULTI-LANE WEAVES LANE LINES SHALL BE 5 INCH, 10'-30' (3 m-9 m) SKIP DASH, WHITE.
  - PLASTIC DRUMS WITH STEADY BURN LIGHTS AT 50' (15 m) C-C SPACING IN TAPERS AND 100' (30 m) C-C SPACING IN TANGENTS.
  - ALL SIGNS SHALL BE POST MOUNTED IF THE CLOSURE TIME EXCEEDS FOUR DAYS.
  - TYPE III BARRICADES MAY BE OMITTED FOR SINGLE-LANE WEAVES UNDER 24-HOURS IN DURATION. W1-6 SIGNS WILL STILL BE REQUIRED. IF THE WIDTH OF OFFSET IS LESS THAN 6' THEN THE TYPE III BARRICADE WITH ATTACHED ARROW SIGN PANEL CAN BE ELIMINATED IN THE TAPER AREAS.
  - WHEN THE LENGTH OF THE SHIFTED SEGMENT (DISTANCE BETWEEN WEAVE POINTS) IS LESS THAN 1500', DOUBLE REVERSE CURVE SIGNS (W24-1) SHOULD BE USED INSTEAD OF THE REVERSE CURVE (W1-4) SIGNS. ARROWS ON THE 4'X8' "ALL TRAFFIC" SIGNS SHALL BE THE SAME SHAPE.
  - THE NUMBER OF ARROWS ON THESE SIGNS SHALL MATCH THE NUMBER OF LANES OPEN TO TRAFFIC.

4'x 8' (1.2 m x 2.4 m); 1 (25) BORDER; 10 (250) CAPITAL LETTERS BACKGROUND SHEETING SHALL BE THE SAME AS ALL DIAMOND SHAPED CONSTRUCTION SIGNS.

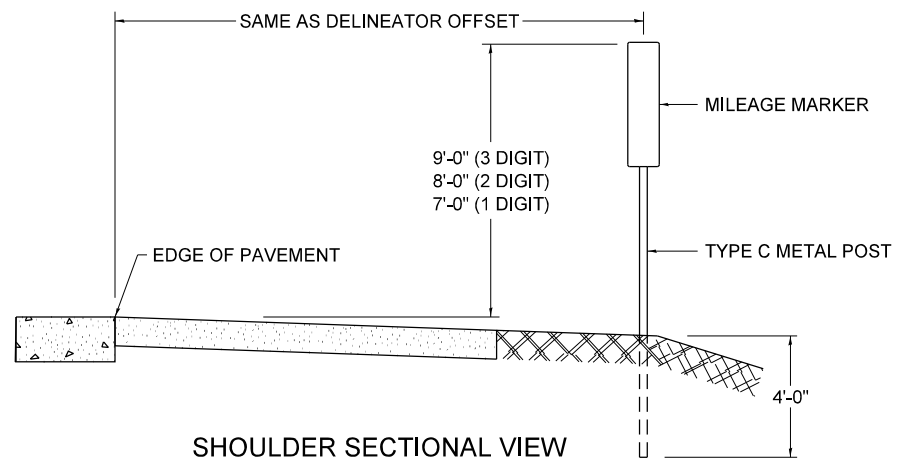
- ### SYMBOLS
- DIRECTION OF TRAFFIC
  - WORK AREA
  - SIGN ON PORTABLE OR PERMANENT SUPPORT
  - TYPE II BARRICADE OR DRUM WITH MONO-DIRECTIONAL STEADY BURNING LIGHT
  - TEMPORARY CONCRETE BARRIER WALL
  - IMPACT ATTENUATOR
  - W1-4R-48
  - W24-1-48

ALL DIMENSIONS ARE IN INCHES (MILLIMETERS) UNLESS OTHERWISE SHOWN

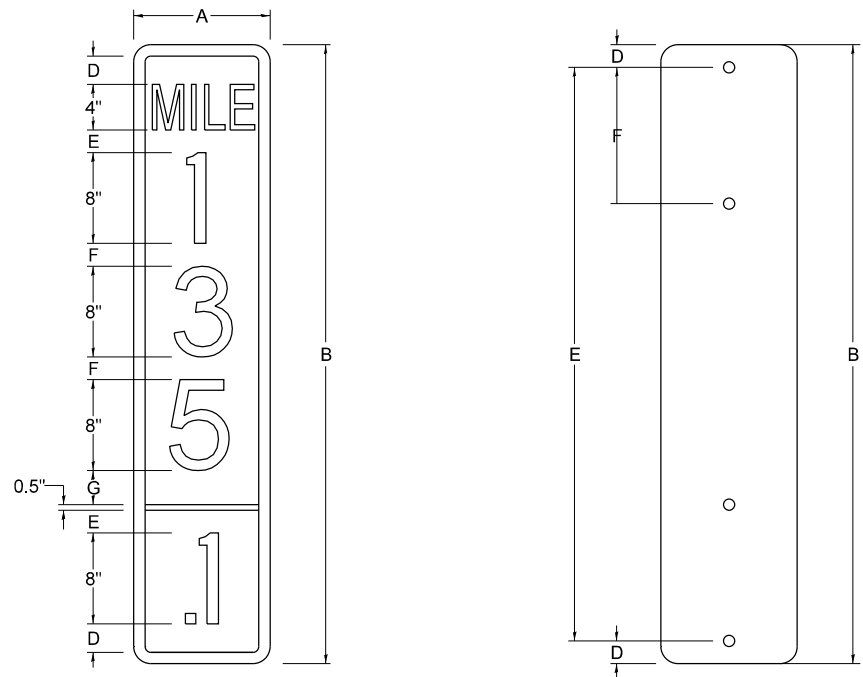
FILE NAME =	USER NAME = pyrzenowski	DESIGNED -	REVISED -	<b>STATE OF ILLINOIS DEPARTMENT OF TRANSPORTATION</b>	<b>TRAFFIC CONTROL DETAILS FOR FREEWAY SINGLE &amp; MULTI-LANE WEAVE</b>			F.A. RTE.	SECTION	COUNTY	TOTAL SHEETS	SHEET NO.
pw:\1\084EBIDINTEG.illinois.gov\PIWIDOT\Documents\DOT Offices\District 1\Projects\DI084\Drawings\Design\DI06417-sht-plan.dgn		CHECKED -	REVISED -					VAR.	2016-0625G	VARIOUS	12	10
PLOT SCALE = 100.0000' / 1"		DATE -	REVISED - MD 06-13					<b>TC-09</b>			<b>CONTRACT NO. 62D55</b>	
PLOT DATE = 11/17/2016								SCALE: NONE	SHEET NO. 1 OF 1 SHEETS	STA. TO STA.	FED. ROAD DIST. NO. 1 ILLINOIS FED. AID PROJECT	



### STANDARD DESIGN FOR MILE POST



SHOULDER SECTIONAL VIEW

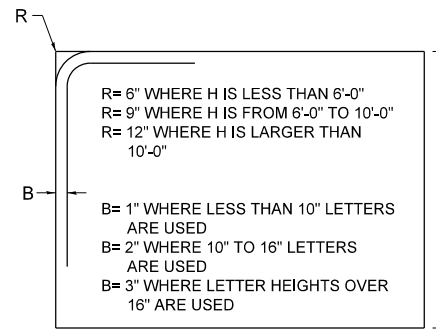


SIGN SIZE	DIMENSIONS							
	A	B	C	D	E	F	G	DIGIT
12 x 24	12.0	24.0	1.5	1.5	1.5	N/A	1.5	1
12 x 36	12.0	36.0	1.5	2.0	2.0	2.0	1.5	2
12 x 48	12.0	48.0	1.5	2.5	2.0	2.0	2.5	3

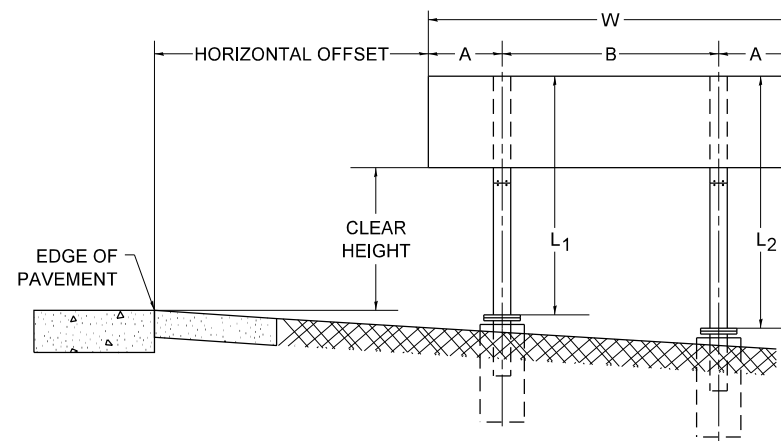
BLANK	A	B	C	D	E	F
B9-1224	12.0	24.0	1.5	2.0	20.0	N/A
B9-1236	12.0	36.0	1.5	2.0	32.0	12.0
B9-1248	12.0	48.0	1.5	2.0	44.0	12.0

SIGN SIZE	SERIES					BLANK STD.	
	LINES						
	1	2	3	4	5	BORDER	
12 x 24	4C	8D	4C	N/A	N/A	0.5	B9-1224
12 x 36	4C	8D	8D	4C	N/A	0.5	B9-1236
12 x 48	4C	8D	8D	8D	4C	0.5	B9-1248

### BORDER AND RADIUS LAYOUT



### MAJOR GUIDE SIGN LAYOUT

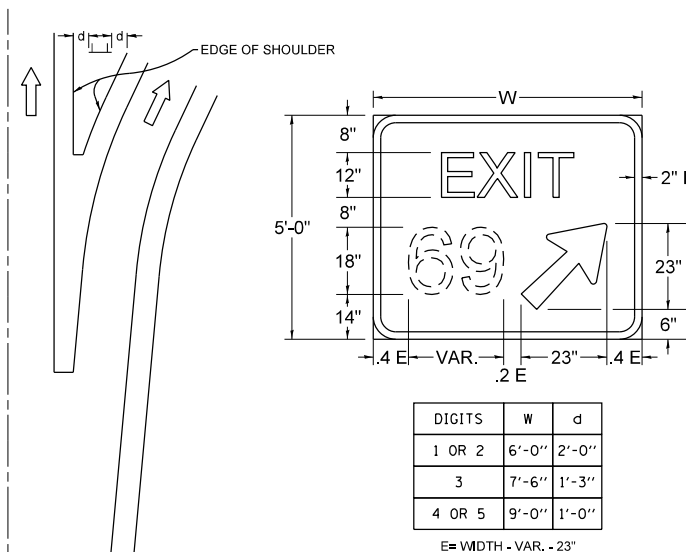


NUMBER OF STEEL SUPPORTS	A	B
2	.2 W	.6 W
3	.15 W	.35 W
4	.125 W	.25 W
5	.1 W	.2 W

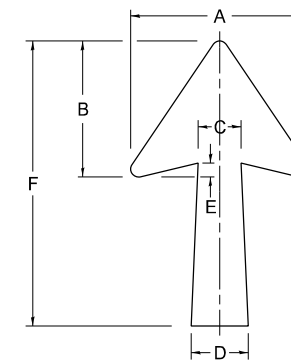
"L1 IS THE LENGTH OF SUPPORT, NOT INCLUDING THE STUB PROJECTION, CLOSEST TO THE EDGE OF THE PAVEMENT."

"A" IS THE DISTANCE FROM THE SIGN EDGE TO THE CENTERLINE OF THE NEAREST SUPPORT. "B" IS THE DISTANCE BETWEEN CENTERLINES OF SUPPORTS."

### GORE SIGNS

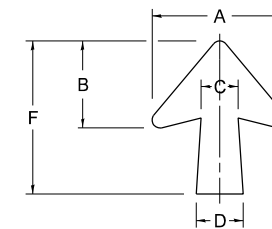


### STANDARD ARROWS FOR INTERSTATE GUIDE SIGNS



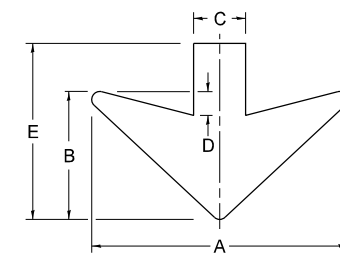
ARROW SYMBOL	A	B	C	D	E	F	R
24 1/4 x 15 1/8	15 1/8	11 1/8	3 3/4	5	1 1/2	24 1/4	1 1/8
29 1/4 x 18 1/4	18 1/4	14	4 1/2	6	1 1/2	29 1/4	3/4
35 5/8 x 22 1/4	22 1/4	17	5 3/8	7 1/8	1 3/4	35 5/8	1
18 1/4 x 11 1/4	11 1/4	8 3/4	3 1/8	3 3/8		18 1/4	

NOTE: D & F ARE RECOMMENDED DIMENSIONS. TAPER SHOULD BE HELD CONSTANT FOR LONGER OR SHORTER SHAFT LENGTHS



ARROW SYMBOL	A	B	C	D	E	F	R
17 1/4 x 14 1/4	14 1/4	9 3/8	3 3/8	4 1/2	1 5/8	17 1/4	3/4
20 1/4 x 17 1/4	17 1/4	11 3/4	4 3/8	5 5/8	1 1/2	20 1/4	
25 x 21 1/8	21 1/8	14 1/4	5	6 3/4	1 3/4	25	1
9 5/8 x 8 1/8	8 1/8	5 5/8	2 5/8	2 5/8		9 5/8	1/2

### DOWN ARROWS



ARROW SYMBOL	A	B	C	D	E	R
16 1/2 x 24	24	12	5	1 1/2	16 1/2	3/4
22 x 32	32	16	6 1/2	3	22	1

FILE NAME = D:\06417-sht-plen.dgn

USER NAME = pyrzanowski  
 PLOT SCALE = 100.0000' / 1" / 1" / 1"  
 PLOT DATE = 11/11/2016

DESIGNED -  
 DRAWN -  
 CHECKED -  
 DATE -

REVISED -  
 REVISED -  
 REVISED -  
 REVISED -

STATE OF ILLINOIS  
 DEPARTMENT OF TRANSPORTATION

MILE POST MARKERS - GORE SIGNS  
 MAJOR GUIDE SIGN LAYOUT - ARROWS

SCALE: NONE SHEET NO. 1 OF 1 SHEETS STA. TO STA.

F.A. RTE.	SECTION	COUNTY	TOTAL SHEETS	SHEET NO.
VAR.	2016-0625G	VARIOUS	12	12
TC-27 (TS-2341-1)			CONTRACT NO. 62D55	
FED. ROAD DIST. NO. 1 ILLINOIS FED. AID PROJECT				