

STATE OF ILLINOIS
DEPARTMENT OF TRANSPORTATION
DIVISION OF HIGHWAYS

13 TOTAL SHEETS

D-92-049-16

INDEX OF SHEETS

- 1. COVER SHEET AND INDEX OF SHEETS
- 2. - 3. SUMMARY OF QUANTITIES
- 4. UTILITIES
- 5. 27TH ST AT 52ND AVE PLAN
- 6. 27TH AT S MALL ENT REMOVAL LIST AND PLAN
- 7. 27TH AT S MALL ENT CABLE PLAN
- 8. 27TH AT N MALL ENT REMOVAL LIST AND PLAN
- 9. 27TH AT N MALL ENT CABLE PLAN
- 10. 27TH AT 36TH/38TH ST REMOVAL PLAN
- 11. 27TH AT 36TH/38TH ST PLAN
- 12. 27TH AT 36TH/38TH ST CABLE PLAN
- 13. SIGN DETAILS

PROPOSED HIGHWAY PLANS

FAU 5834 (27th St)
SECTION 115TS

SIGNAL MODERNIZATION
ROCK ISLAND COUNTY

C-92-056-16

STANDARDS

- 701006-05
- 701101-05
- 701411-09
- 701421-08
- 701601-09
- 701701-10
- 701901-06
- 720016-03
- 814001-03
- 857001-01
- 873001-02
- 877001-06
- 877011-08
- 878001-10
- 880006-01
- 000001-06



27TH STREET AT:
& 52ND AVENUE
SOUTHPARK MALL SOUTH ENTRANCE
SOUTHPARK MALL NORTH ENTRANCE
36TH/38TH AVE

J.U.L.I.E.
JOINT UTILITY LOCATION INFORMATION FOR EXCAVATION
1-800-892-0123
OR 811

PROJECT ENGINEER SCOTT KULLERSTRAND 815-284-5468
PROJECT MANAGER KRISTINE L HILL 815-284-5476

T-17-N R-2-W

STATE OF ILLINOIS
DEPARTMENT OF TRANSPORTATION

SUBMITTED 12-5 20 16
K. Marshall
REGIONAL ENGINEER

Jan 27 20 17
Marcus M. Addis
ENGINEER OF DESIGN AND ENVIRONMENT

Jan 27 20 17
Scott Kullerstrand
DIRECTOR OF PROGRAM DEVELOPMENT

PRINTED BY THE AUTHORITY
OF THE STATE OF ILLINOIS

URBAN
100% STATE
0021

TRAFFIC SIGNALS SUMMARY OF QUANTITIES

PAY CODE	ITEM	UNIT	52 ND AVE	S MALL ENT	N MALL ENT	36TH/38TH AVE	TOTAL
67100100	MOBILIZATON	L SUM	0.25	0.25	0.25	0.25	1
70100310	TRAFFIC CONTROL AND PROTECTION, STANDARD 701421	L SUM	0.25	0.25	0.25	0.25	1
70100420	TRAFFIC CONTROL AND PROTECTION, STANDARD 701411	EACH	0.25	0.25	0.25	0.25	1
70102635	TRAFFIC CONTROL AND PROTECTION, STANDARD 701701	L SUM	0.25	0.25	0.25	0.25	1
* 72000100	SIGN PANEL - TYPE 1	SQ FT	16.5	7.5	7.5	33	65
* 72400310	REMOVE SIGN PANEL - TYPE 1	SQ FT	16.5	7.5	7.5	33	65
81028760	UNDERGROUND CONDUIT, COILABLE NONMETALLIC CONDUIT, 2 1/2" DIA	FOOT	0	49	101	56	206
81028790	UNDERGROUND CONDUIT, COILABLE NONMETALLIC CONDUIT, 4" DIA	FOOT	0	167	121	275	563
81400700	HANDHOLE, PORTLAND CEMENT CONCRETE	EACH	0	0	1	5	6
81702110	ELECTRIC CABLE IN CONDUIT, 600V (XLP - TYPE USE) 1/C No. 10	FOOT	0	740	628	733	2101
82102250	LUMINAIRE, SODUIM VAPOR, HORIZONTAL MOUNT, 250 WATT	EACH	0	2	2	1	5
85000200	MAINTENANCE OF EXISTING TRAFFIC SIGNAL INSTALLATION	EACH	1	1	1	1	4
85700200	FULL ACTUATED CONTROLLER AND TYPE IV CABINET	EACH	0	1	1	0	2
87301245	ELECTRIC CABLE IN CONDUIT, SIGNAL NO 14 5C	FOOT	0	385	846	1415	2646
87301255	ELECTRIC CABLE IN CONDUIT, SIGNAL NO 14 7C	FOOT	0	527	350	0	877
87301900	ELECTRIC CABLE IN CONDUIT, EQUIPMENT GROUNDING CONDUCTOR, No. 6 1C	FOOT	0	216	209	218	643
87502470	TRAFFIC SIGNAL POST, GALVANIZED STEEL 13 FT	EACH	0	3	2	1	6
87700240	STEEL MAST ARM ASSEMBLY AND POLE 40 FT	EACH	0	0	3	1	4

19

* SPECIALTY ITEM

FILE NAME: P:\Projects\Contract 64131 27th St\64131	USER NAME: h33k3	DESIGNED: -	REVISED: -	STATE OF ILLINOIS DEPARTMENT OF TRANSPORTATION	SUMMARY OF QUANTITIES			F.A.W. RTE. 5838	SECTION J1515	COUNTY ROCK ISLAND	TOTAL SHEETS 13	SHEET NO. 2			
Default	PLOT SCALE: 1/2" = 1'	CHECKED: -	REVISED: -					SCALE: _____	SHEET _____	OF _____	SHEETS _____	STA. _____	TO STA. _____	ILLINOIS FED. AID PROJECT CONTRACT NO. 64131	
	PLOT DATE: Nov-30-2015 02:51:48 PM	DATE: -	REVISED: -												

REV

URBAN
100% STATE
00.21

TRAFFIC SIGNALS SUMMARY OF QUANTITIES

			52nd	S MALL ENT	N MALL ENT	36TH/38TH AVE	
87700260	STEEL MAST ARM ASSEMBLY AND POLE 44 FT	EACH	0	0	1	1	2
87702850	STEEL COMBINATION MAST ARM ASSEMBLY AND POLE 24 FT	EACH	0	1	1	0	2
87702880	STEEL COMBINATION MAST ARM ASSEMBLY AND POLE 30 FT	EACH	0	1	1	0	2
87702930	STEEL COMBINATION MAST ARM ASSEMBLY AND POLE 40 FT	EACH	0	0	0	1	1
87800100	CONCRETE FOUNDATION, TYPE A	FOOT	0	9	9	3	21
87800400	CONCRETE FOUNDATION, TYPE E DIA., 30 - INCH DIAMETER	FOOT	0	24	24	41	89
87900200	DRILL EXISTING HANDHOLE	EACH	0	8	5		13
88040070	SIGNAL HEAD, POLYCARBONATE, LED, 1-FACE, 3-SECTION, BRACKET MOUNTED	EACH	0	2	2	1	5
88040090	SIGNAL HEAD, POLYCARBONATE, LED, 1-FACE, 3-SECTION, MAST ARM MOUNTED	EACH	0	3	3	8	14
88040150	SIGNAL HEAD, POLYCARBONATE, LED, 1-FACE, 5-SECTION BRACKET MOUNTED	EACH	0	1	1	0	2
88040160	SIGNAL HEAD, POLYCARBONATE, LED, 1-FACE, 5-SECTION MAST ARM MOUNTED	EACH	0	1	1	0	2
88200100	TRAFFIC SIGNAL BACKPLATE	EACH	0	4	4	8	16
89502210	MODIFY EXISTING CONTROLLER CABINET	EACH	1	0	0	1	2
89502375	REMOVE EXISTING TRAFFIC SIGNAL EQUIPMENT	EACH	1	1	1	1	4
89502380	REMOVE EXISTING HANDHOLE	EACH	0	0	1	2	3
89502385	REMOVE EXISTING CONCRETE FOUNDATION	EACH	0	3	4	5	12
X0322951	CABLE SPLICE SPECIAL	EACH	0	0	0	1	1
X1400213	MICROWAVE VEHICLE DETECTION SYSTEM	EACH	1	1	1	1	4
X8140234	REPLACE HANDHOLE COVER	EACH	0	0	0	1	1

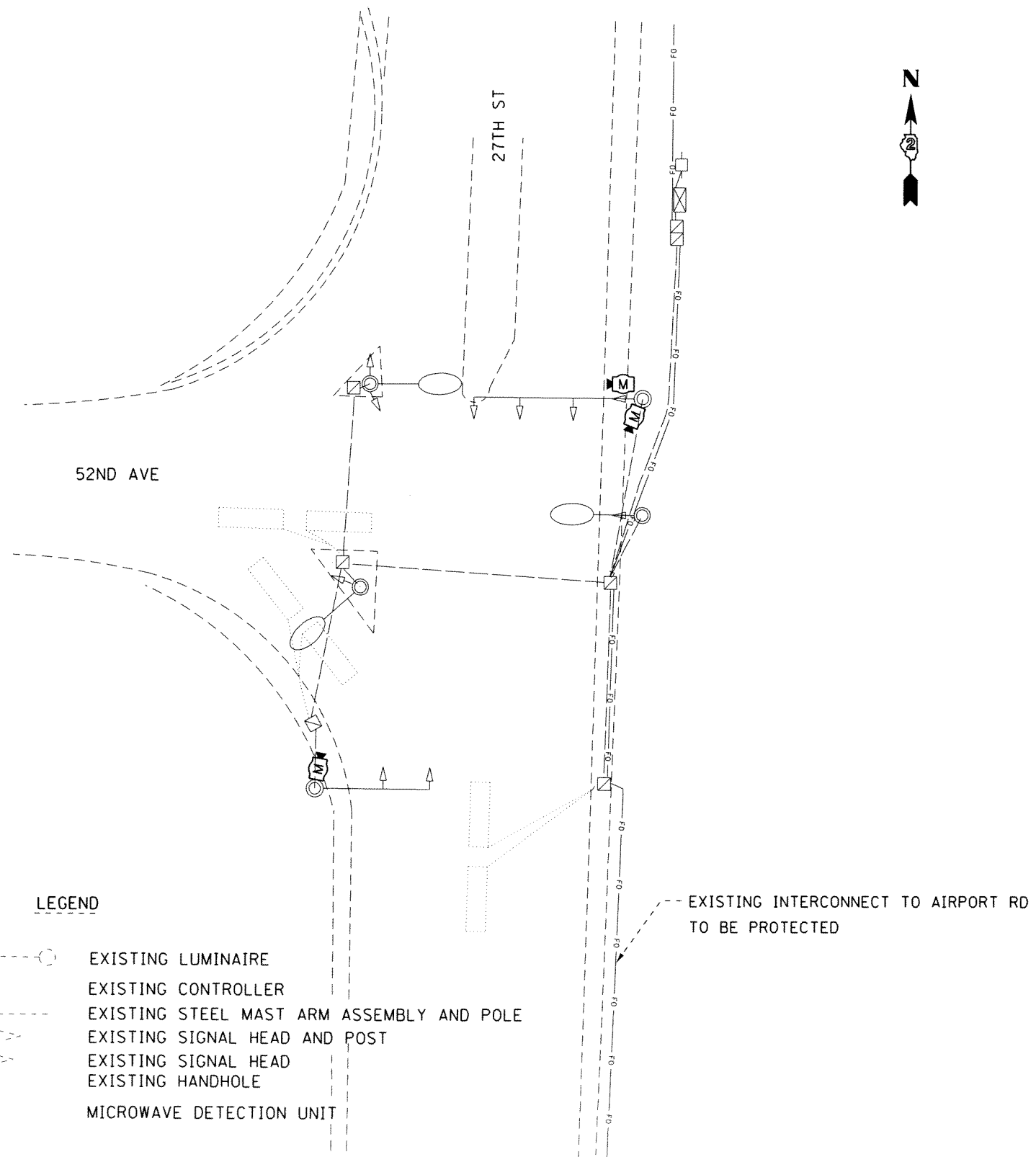
* SPECIALTY ITEM

FILE NAME *	USER NAME * h1b1	DESIGNED -	REVISED -	STATE OF ILLINOIS DEPARTMENT OF TRANSPORTATION	SUMMARY OF QUANTITIES		FAU	SECTION	COUNTY	TOTAL SHEETS	SHEET NO.
PIVProject\Contract 64131 27th St\64131	plan sheets.dgn	DRAWN -	REVISED -				5834	J1515	ROCK ISLAND	13	3
Default	PLOT SCALE = 42.421' / 1" =	CHECKED -	REVISED -				SCALE: _____ SHEET _____ OF _____ SHEETS STA. _____ TO STA. _____		CONTRACT NO. 64131		ILLINOIS FED. AID PROJECT
	PLOT DATE = Nov-30-2016 02:52:00 PM	DATE -	REVISED -								

REV

UTILITIES			
NAME AND ADDRESS	TYPE	TELEPHONE	
MR. ROGER GRANELL GENESEO TELEPHONE CO. 111 E. 1ST STREET GENESEO, IL 61254	TELEPHONE	309-944-8025	JULIE MEMBER? YES CALL 800-892-0123
MR. DAVID CREEN AT&T 2800 7TH STREET MOLINE, IL 61265	TELEPHONE	309-757-4707	JULIE MEMBER? YES CALL 800-892-0123
MR. NATE TEAGER MIDAMERICAN ENERGY COMPANY 5955 FENNO ROAD BETTENDORF, IA 52722	ELECTRIC	563-333-8706	JULIE MEMBER? YES CALL 800-892-0123
MR. ROD HAWK MIDAMERICAN ENERGY COMPANY 2811 - 5TH AVENUE ROCK ISLAND, IL 61201	GAS	309-793-3760	JULIE MEMBER? YES CALL 800-892-0123
MR. ANTONIO GLESSNER CENTURYLINK 3908 UTICA RIDGE ROAD BETTENDORF, IA 52722	TELEPHONE	563-355-6402	JULIE MEMBER? YES CALL 800-892-0123
MR. DENNIS JARDING MEDIACOM 3900 - 26TH AVENUE MOLINE, IL 61265	CATV	309-743-4750	JULIE MEMBER? YES CALL 800-892-0123
MR. MICHAEL WALDRON CITY OF MOLINE 3635 - 4TH AVENUE MOLINE, IL 61265	WATER & SEWER	309-797-0716	JULIE MEMBER? YES CALL 800-892-0123
MR. DAVID FERREIRA WINDSTREAM 211-B SW ADAMS STREET PEORIA, IL 61602	COMMUNICATIONS	309-282-3110	JULIE MEMBER? CALL

FILE NAME = P:\Projects\Contract 64L31 27th St\64L31	USER NAME = hllk1 plan sheets.dgn	DESIGNED - _____ DRAWN - _____	REVISED - _____ REVISED - _____	STATE OF ILLINOIS DEPARTMENT OF TRANSPORTATION	27TH STREET UTILITIES			F.A.W. RTE. 5834	SECTION JISIS	COUNTY ROCK ISLAND	TOTAL SHEETS 13	SHEET NO. 4
Default	PLOT SCALE = 42.421' / in.	CHECKED - _____	REVISED - _____		SCALE: _____	SHEET _____	OF _____	SHEETS	STA. _____	TO STA. _____	CONTRACT NO. 64L31	
	PLOT DATE = Nov-30-2016 02:52:13 PM	DATE - _____	REVISED - _____		ILLINOIS FED. AID PROJECT							

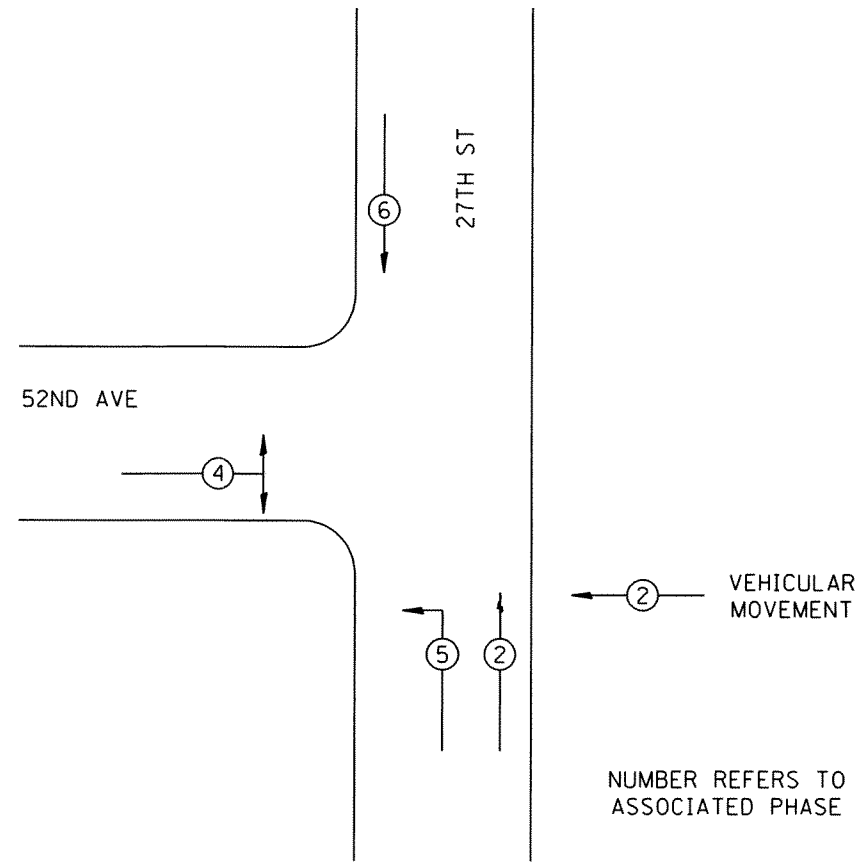


LEGEND

- EXISTING LUMINAIRE
- EXISTING CONTROLLER
- EXISTING STEEL MAST ARM ASSEMBLY AND POLE
- EXISTING SIGNAL HEAD AND POST
- EXISTING SIGNAL HEAD
- EXISTING HANDHOLE
- MICROWAVE DETECTION UNIT

EXISTING INTERCONNECT TO AIRPORT RD TO BE PROTECTED

PHASE DESIGNATION DIAGRAM

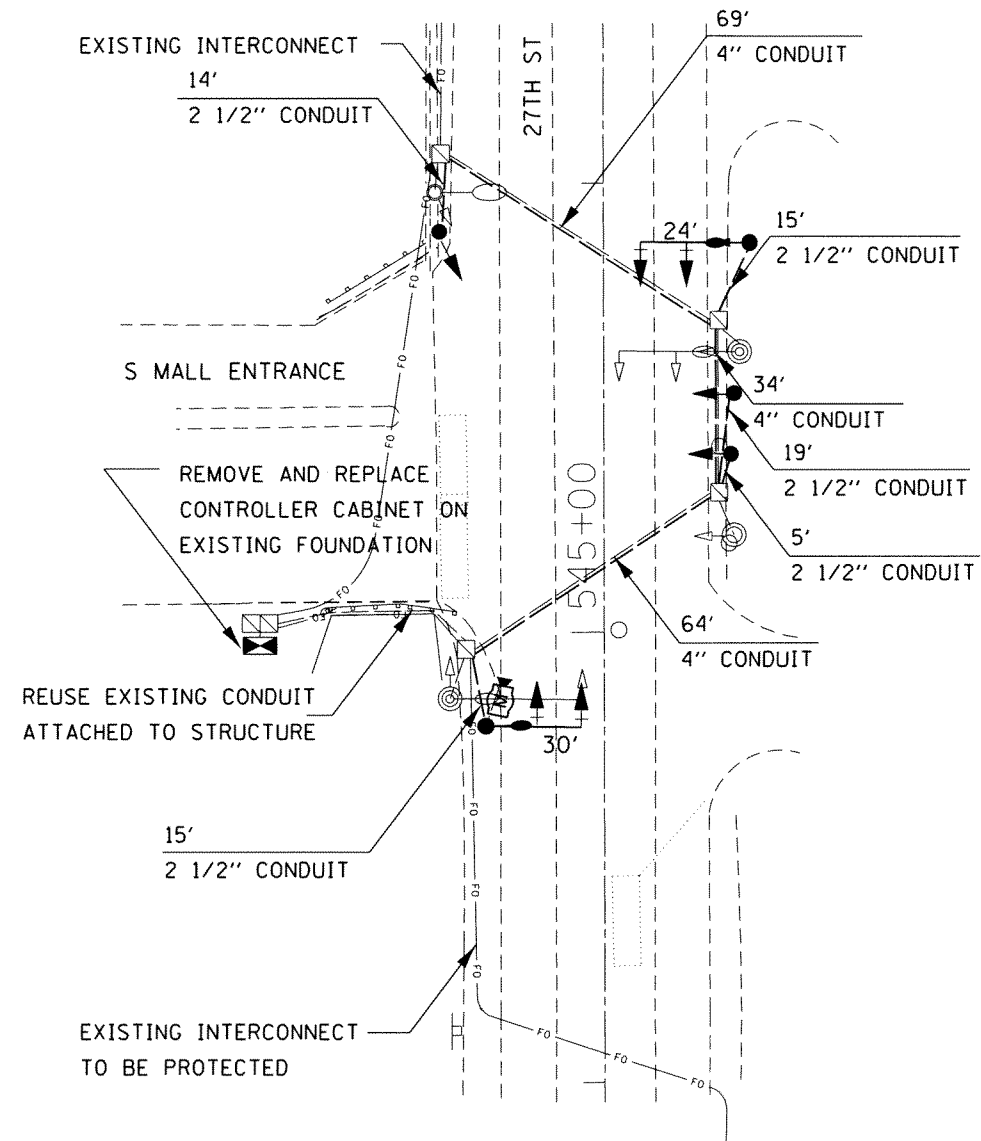


REFER TO STANDARD 857001

NOTE:

1. THE CONTRACTOR WILL BE RESPONSIBLE FOR PROTECTING THE EXISTING FIBER OPTIC INTERCONNECT CABLE, AS INCIDENTAL TO THE PAY CODE MAINTENANCE OF EXISTING TRAFFIC SIGNAL INSTALLATION AT ALL FOUR INTERSECTIONS.
2. REMOVE LOOP DETECTOR CABLE WHERE POSSIBLE.
3. INSTALL MICROWAVE DETECTION
4. MODIFY EXISTING CONTROLLER CABINET WILL INCLUDE REMOVABLE OF LOOP DETECTION EQUIPEMENT AND THE REMOVAL AND REPLACEMENT OF THE FIBER OPTIC COMPATABLE CONTROLLER.

FILE NAME =	USER NAME = hiki	DESIGNED -	REVISED -	STATE OF ILLINOIS DEPARTMENT OF TRANSPORTATION	27TH ST AT 52ND AVE PLAN SHEET		F.A.U. RTE.	SECTION	COUNTY	TOTAL SHEETS	SHEET NO.	
P:\Projects\Contract 64L31 27th St\64L31	plan sheets.dgn	DRAWN -	REVISED -		SCALE: _____	SHEET _____ OF _____ SHEETS	STA. _____ TO STA. _____	5834	11515	ROCK ISLAND	13	5
Default	PLOT SCALE = 42.654' / in.	CHECKED -	REVISED -		CONTRACT NO. 64L31							
	PLOT DATE = Nov-30-2016 02:52:22 PM	DATE -	REVISED -		ILLINOIS FED. AID PROJECT							



COMBINATION MAST ARM ASSEMBLIES WILL INCLUDE
A 35' LUMINAIRE WITH A 8' ARM

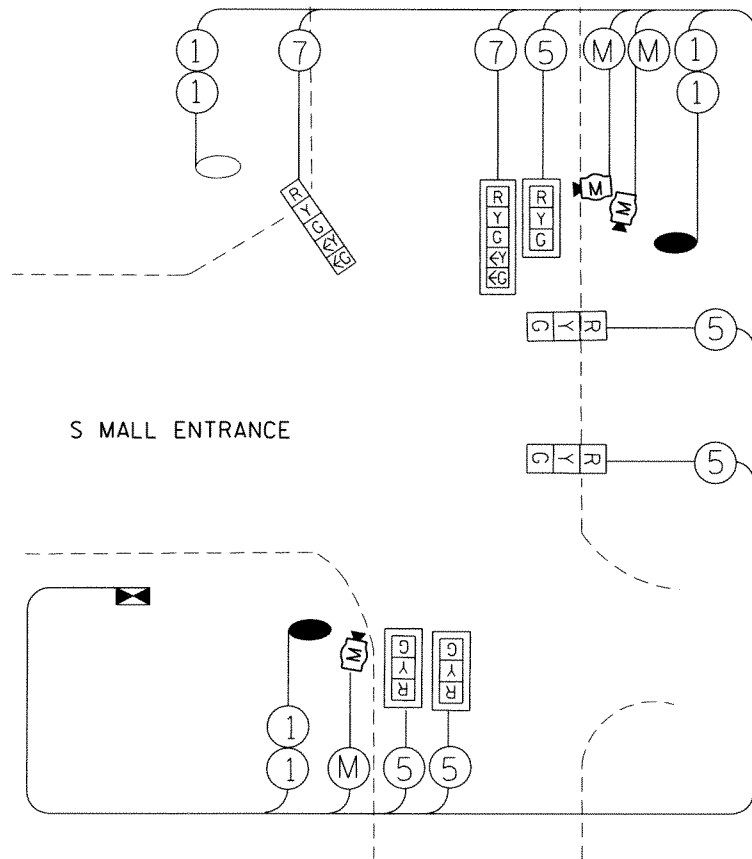
REMOVE EXISTING TRAFFIC SIGNAL EQUIPMENT:

- 1 - CONTROLLER CABINET
- 2 - COMBINATION MASTARM ASSEMBLIES
- 1 - SIGNAL POST
- 2 - 3 SECTION MAST ARM MOUNTED SIGNAL HEADS
- 2 - 3 SECTION BRACKET MOUNTED SIGNAL HEAD
- 1 - 5 SECTION MAST ARM MOUNTED SIGNAL HEAD
- 1 - 5 SECTION BRACKET MOUNTED SIGNAL HEAD
- 3 - CONCRETE FOUNDATION
- UNUSED CABLES WHERE POSSIBLE

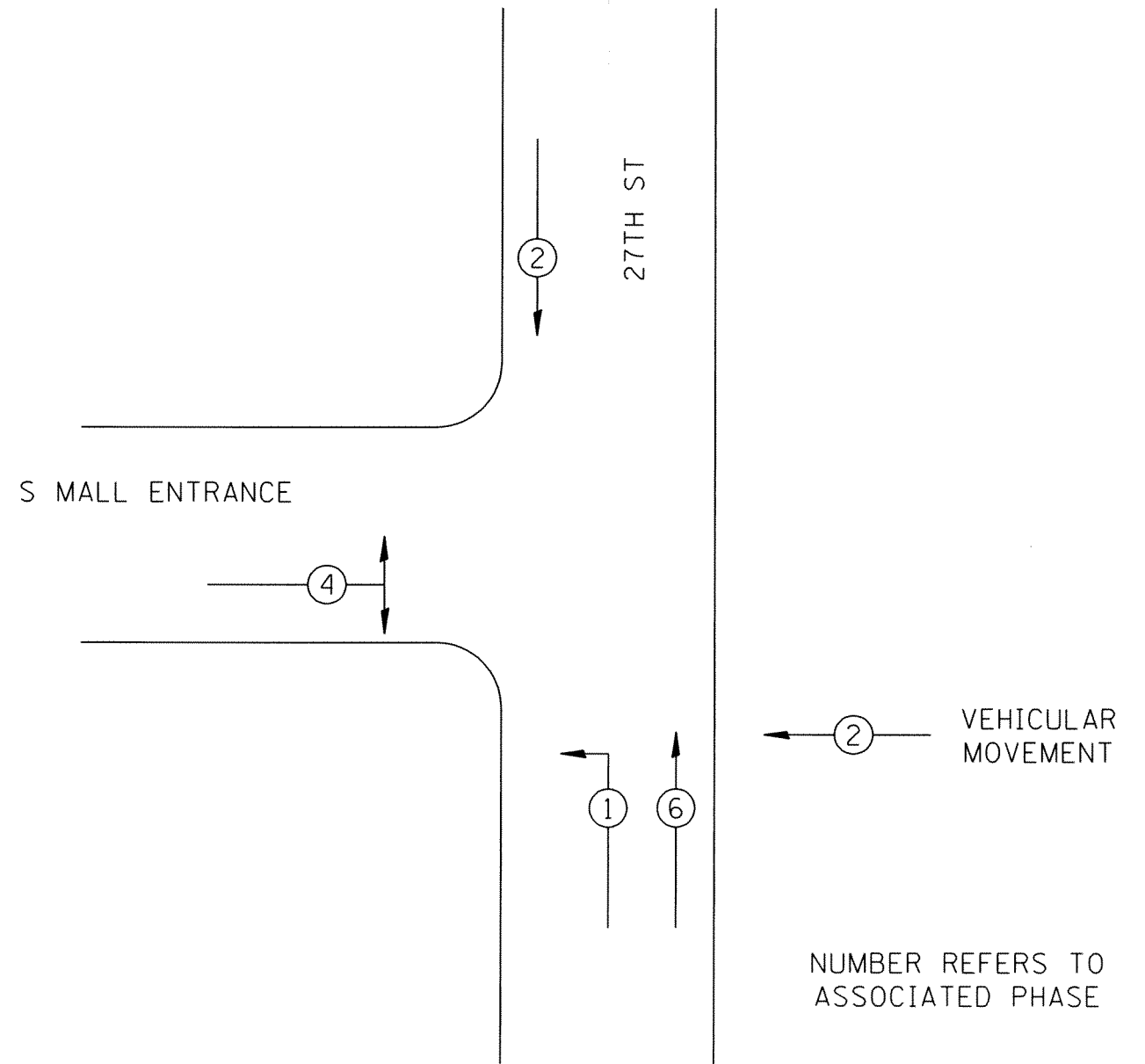
LEGEND

- EXISTING CONTROLLER
- EXISTING STEEL MAST ARM ASSEMBLY AND POLE
- EXISTING SIGNAL HEAD AND POST
- EXISTING SIGNAL HEAD
- NEW SIGNAL HEAD WITH BACKPLATE
- EXISTING HANDHOLE
- MICROWAVE DETECTION UNIT
- NEW CONTROLLER

FILE NAME =	USER NAME = hllkl	DESIGNED -	REVISED -	STATE OF ILLINOIS DEPARTMENT OF TRANSPORTATION	27TH ST AT S MALL ENTRANCE REMOVAL LIST AND PLAN SHEET		F.A.U. RTE. =	SECTION	COUNTY	TOTAL SHEETS	SHEET NO.
P:\Projects\Contract 64L31 27th St\64L31	plan sheets.dgn	DRAWN -	REVISED -		5834	1151S	ROCK ISLAND	13	6		
Default	PLOT SCALE = 42.654' / in.	CHECKED -	REVISED -		SCALE: _____ SHEET _____ OF _____ SHEETS STA. _____ TO STA. _____		CONTRACT NO. 64L31		ILLINOIS FED. AID PROJECT		
	PLOT DATE = Nov-30-2016 02:52:34 PM	DATE -	REVISED -								

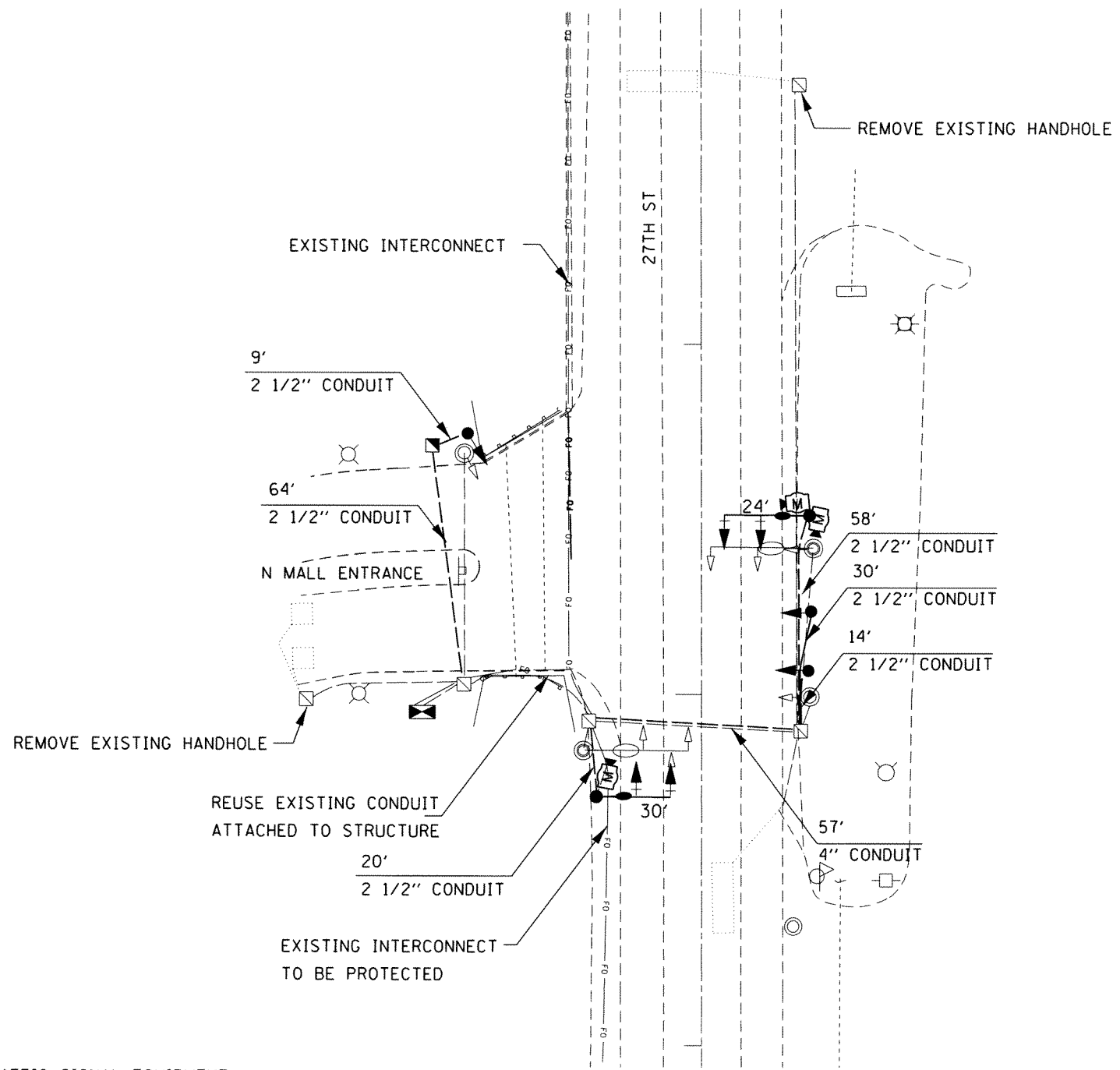


PHASE DESIGNATION DIAGRAM



REFER TO STANDARD 857001

FILE NAME =	USER NAME = h11k1	DESIGNED -	REVISED -	STATE OF ILLINOIS DEPARTMENT OF TRANSPORTATION	27TH ST AT S MALL ENTRANCE CABLE PLAN SHEET		F.A.U. RTE.	SECTION	COUNTY	TOTAL SHEETS	SHEET NO.	
P:\Projects\Contract 64L31 27th St\64L31	plan sheets .dgn	DRAWN -	REVISED -		SCALE: _____	SHEET _____ OF _____ SHEETS	STA. _____ TO STA. _____	1151	1151S	ROCK ISLAND	13	7
Default	PLOT DATE = Nov-30-2016 02:53:02 PM	CHECKED -	REVISED -						ILLINOIS FED. AID PROJECT		CONTRACT NO. 64L31	
		DATE -	REVISED -									



COMBINATION MAST ARM ASSEMBLIES WILL INCLUDE
A 35' LUMINAIRE WITH A 8' ARM

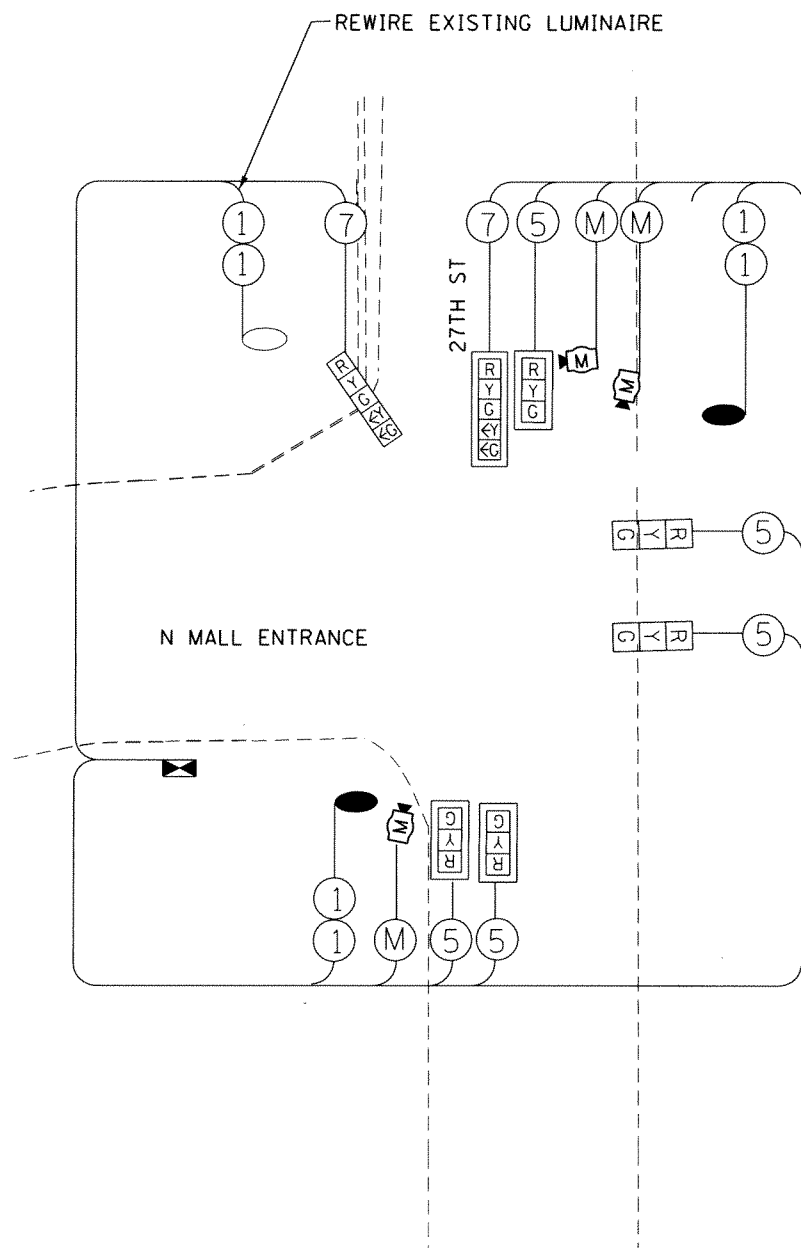
REMOVE EXISTING TRAFFIC SIGNAL EQUIPMENT:

- 1 - CONTROLLER CABINET
 - 2 - COMBINATION MASTARM ASSEMBLIES
 - 3 - 3 SECTION MAST ARM MOUNTED SIGNAL HEADS
 - 2 - 3 SECTION BRACKET MOUNTED SIGNAL HEAD
 - 1 - 5 SECTION MAST ARM MOUNTED SIGNAL HEAD
 - 1 - 5 SECTION BRACKET MOUNTED SIGNAL HEAD
 - 4 - CONCRETE FOUNDATION
- UNUSED CABLES WHERE POSSIBLE

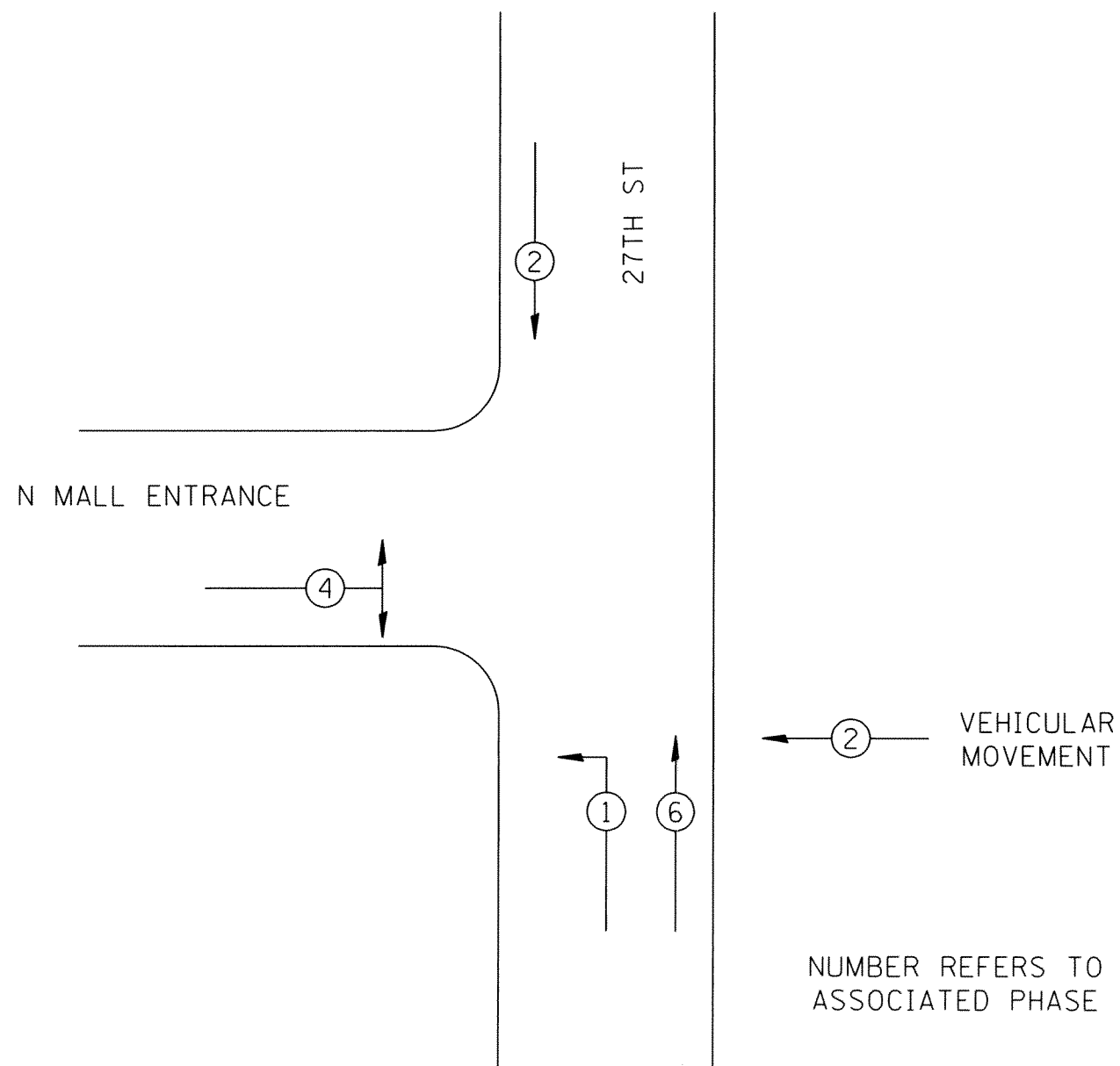
LEGEND

- EXISTING CONTROLLER
- NEW CONTROLLER
- EXISTING STEEL MAST ARM ASSEMBLY AND POLE
- EXISTING SIGNAL HEAD AND POST
- NEW SIGNAL HEAD AND POST
- EXISTING SIGNAL HEAD
- NEW SIGNAL HEAD WITH BACKPLATE
- EXISTING HANDHOLE
- MICROWAVE DETECTION UNIT
- HANDHOLE

FILE NAME = P:\Projects\Contract 64L31 27th St\64L31	USER NAME = h11k1	DESIGNED -	REVISED -	STATE OF ILLINOIS DEPARTMENT OF TRANSPORTATION	27TH ST AT N MALL ENTRANCE REMOVAL LIST AND PLAN SHEET		F.A.J. RTE. = 115I	SECTION = 115IS	COUNTY = ROCK ISLAND	TOTAL SHEETS = 13	SHEET NO. = 8	
Default	plan sheets .dgn	DRAWN -	REVISED -		SCALE: _____	SHEET _____ OF _____ SHEETS	STA. _____ TO STA. _____	CONTRACT NO. 64L31		ILLINOIS FED. AID PROJECT		
	PLOT SCALE = 42.854' / in.	CHECKED -	REVISED -									
	PLOT DATE = Nov-30-2016 02:53:17 PM	DATE -	REVISED -									



PHASE DESIGNATION DIAGRAM



NUMBER REFERS TO ASSOCIATED PHASE

REFER TO STANDARD 857001

FILE NAME = P:\Projects\Contract 64L31 27th St\64L31	USER NAME = hiki	DESIGNED -	REVISED -	STATE OF ILLINOIS DEPARTMENT OF TRANSPORTATION	27TH ST AT N MALL ENTRANCE CABLE PLAN SHEET		F.A.U. RTE. I151	SECTION I151S	COUNTY ROCK ISLAND	TOTAL SHEETS 13	SHEET NO. 9	
plan sheets.dgn	PLOT SCALE = 42.654' / in.	DRAWN -	REVISED -		SCALE: _____	SHEET _____	OF _____	SHEETS	STA. _____	TO STA. _____	CONTRACT NO. 64L31	
Default	PLOT DATE = Nov-30-2016 02:53:29 PM	CHECKED -	REVISED -		ILLINOIS FED. AID PROJECT							
		DATE -	REVISED -									



REMOVE EXISTING HANDHOLE

NW QUAD REMOVAL:
 1 - MAST ARM ASSEMBLY
 2- 3 SECTION MAM SIGNAL HEAD
 1 - MAST ARM FOUNDATION

NE QUAD REMOVAL:
 1 - MAST ARM ASSEMBLY
 2- 3 SECTION MAM SIGNAL HEAD
 1 - MAST ARM FOUNDATION
 1 - MODIFY EXISTING CONTROLLER CABINET
 REMOVE AND REPLACE THE MASTER
 CONTROLLER IN THE EXISTING CABINET

REMOVE EXISTING TRAFFIC SIGNAL EQUIPMENT:
 (PAYCODE)
 1 - COMBINATION MASTARM ASSEMBLIES
 2 - MASTARM ASSEMBLIES
 1 - SIGNAL POST
 8 - 3 SECTION MAST ARM MOUNTED SIGNAL HEADS
 1 - 3 SECTION BRACKET MOUNTED SIGNAL HEAD
 5 - CONCRETE FOUNDATION
 UNUSED CABLES WHERE POSSIBLE

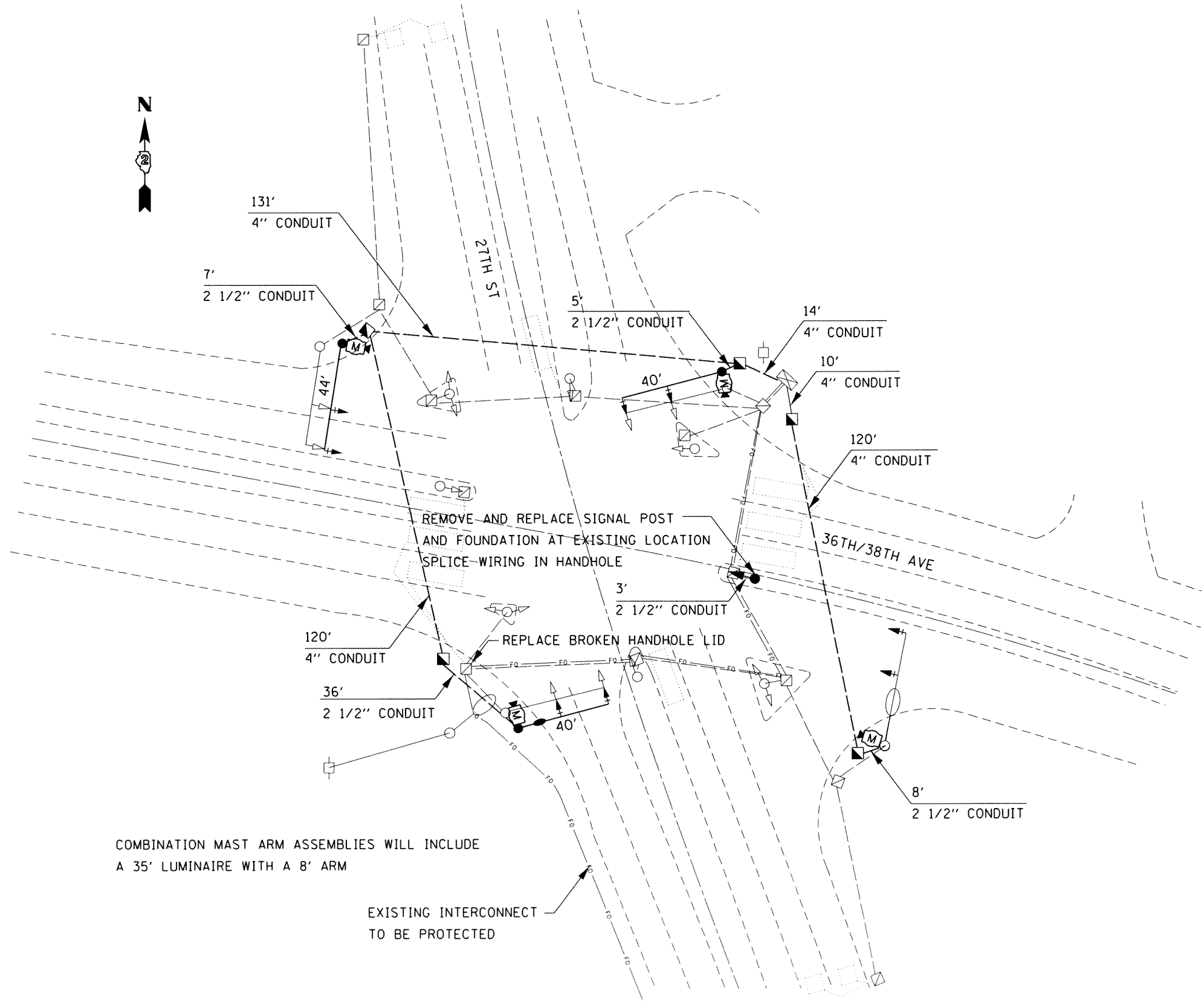
EXISTING LIGHT AND POLE TO BE REMOVED
 BY MID-AMERICAN RE MUST CONTACT THEM
 ONCE COMBINATION MASTARM ASSEMBLY
 IS IN PLACE.

SW QUAD REMOVAL:
 1 - MAST ARM ASSEMBLY
 2 - 3 SECTION MAM SIGNAL HEADS
 1 - MAST ARM FOUNDATION

SE QUAD REMOVAL:
 1 - 15' SIGNAL POST
 1-SIGNAL FOUNDATION
 1 - 3 SECTION BM SIGNAL HEAD
 2 - 3 SECTION MAM SIGNAL HEADS

REMOVE EXISTING HANDHOLE



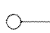
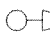




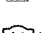
FILE NAME = P:\Projects\Contract 64L31 27th St\64L31 plan sheets.dgn	USER NAME = NLIKI	DESIGNED - _____	REVISED - _____	STATE OF ILLINOIS DEPARTMENT OF TRANSPORTATION	27TH ST AT 36TH/38TH AVE REMOVAL PLANS		F.A.U. RTE. 5834	SECTION 1151S	COUNTY ROCK ISLAND	TOTAL SHEETS 13	SHEET NO. 10	
Default	PLOT SCALE = 42.654' / in.	CHECKED - _____	REVISED - _____		SCALE: _____	SHEET OF SHEETS	STA. TO STA.	CONTRACT NO. 64L31				
	PLOT DATE = Nov-30-2016 02:53:43 PM	DATE - _____	REVISED - _____		ILLINOIS FED. AID PROJECT							



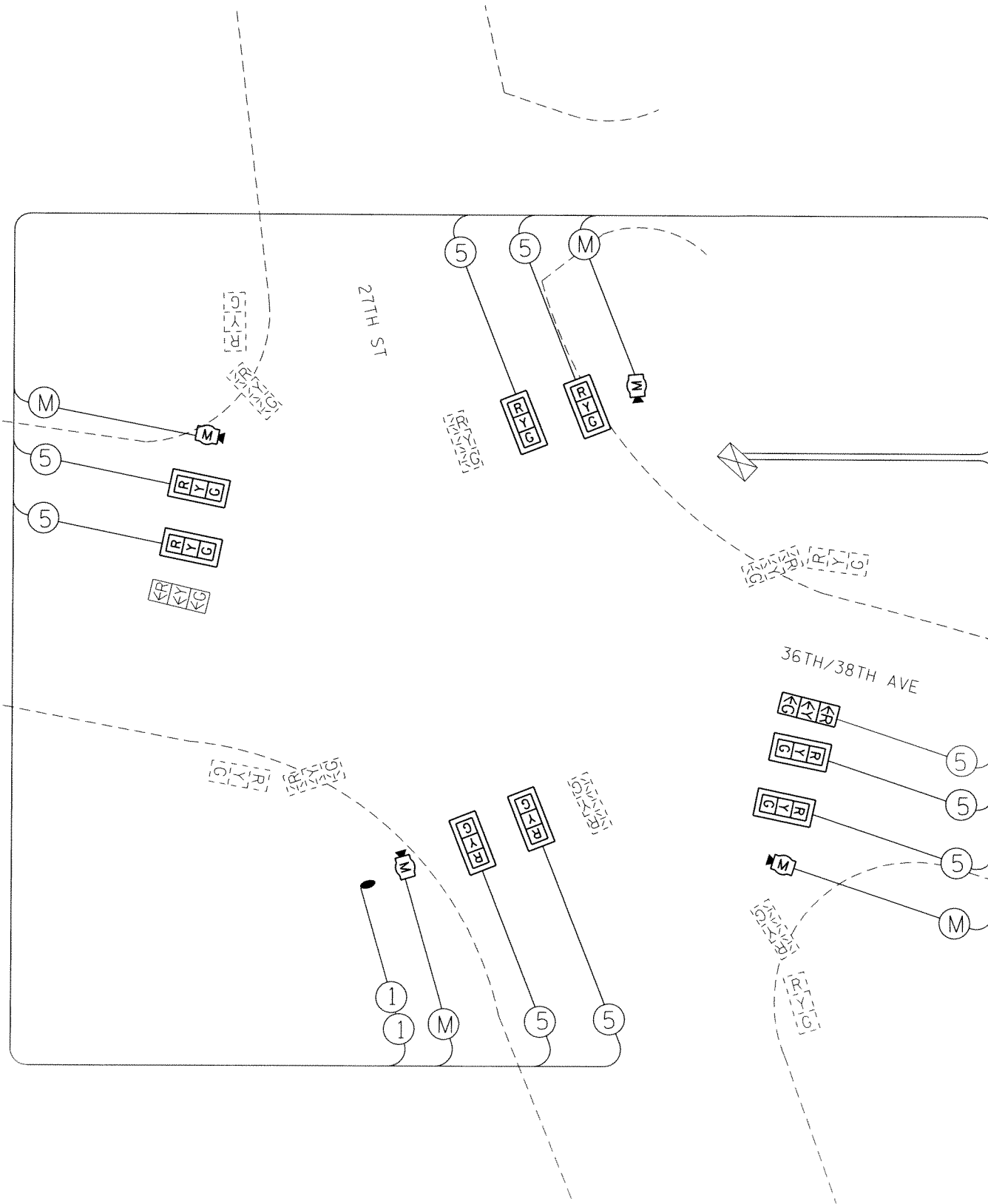
COMBINATION MAST ARM ASSEMBLIES WILL INCLUDE
A 35' LUMINAIRE WITH A 8' ARM

EXISTING INTERCONNECT
TO BE PROTECTED

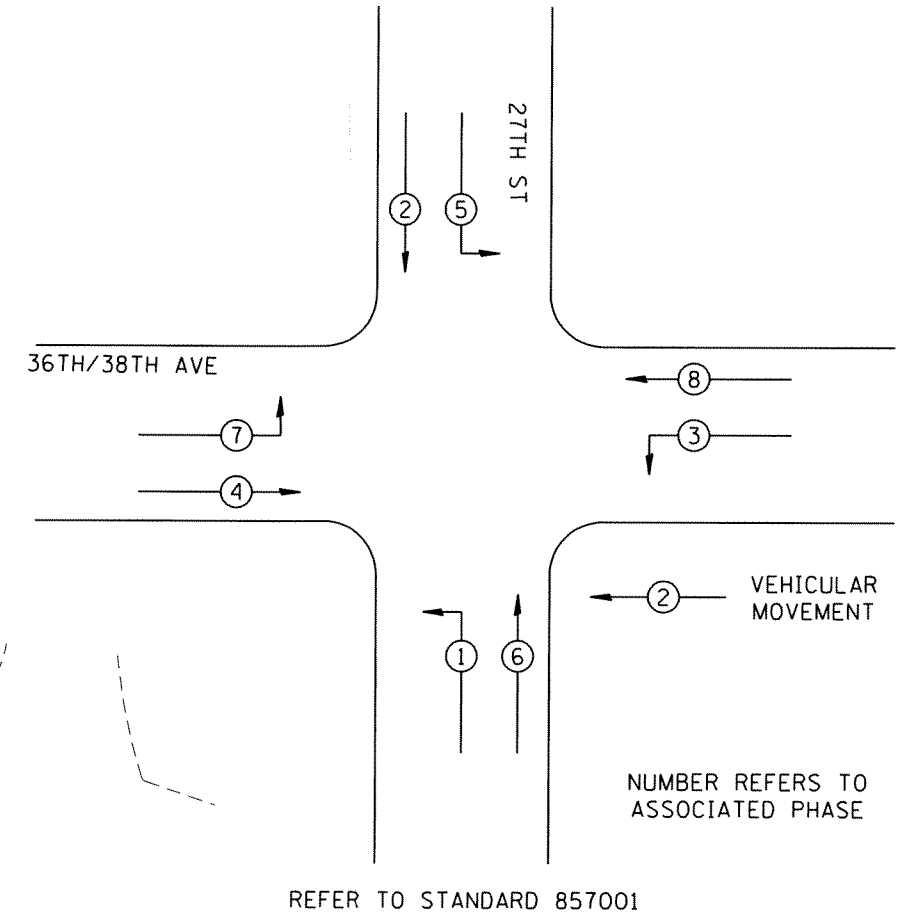
LEGEND

-  EXISTING CONTROLLER
-  NEW CONTROLLER
-  EXISTING STEEL MAST ARM ASSEMBLY AND POLE
-  EXISTING SIGNAL HEAD AND POST
-  NEW SIGNAL HEAD AND POST
-  EXISTING SIGNAL HEAD
-  NEW SIGNAL HEAD WITH BACKPLATE
-  EXISTING HANDHOLE
-  MICROWAVE DETECTION UNIT

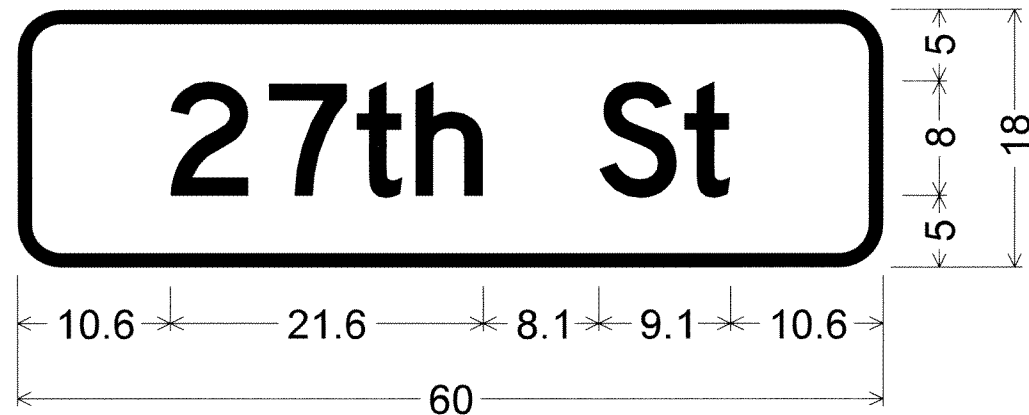
FILE NAME = P:\Projects\Contract 64L31 27th St\64L31	USER NAME = hillki plan sheets.dgn	DESIGNED - _____	REVISED - _____	STATE OF ILLINOIS DEPARTMENT OF TRANSPORTATION	27TH ST AT 36TH/38TH AVE PLAN SHEET	F.A.W. RTE. 5838	SECTION 115TS	COUNTY ROCK ISLAND	TOTAL SHEETS 13	SHEET NO. 11
Default	PLOT SCALE = 42.421' / in.	CHECKED - _____	REVISED - _____		SCALE: _____	SHEET _____ OF _____ SHEETS	ILLINOIS FED. AID PROJECT			
	PLOT DATE = Nov-30-2016 02:54:01 PM	DATE - _____	REVISED - _____		STA. _____ TO STA. _____	CONTRACT NO. 64L31				



PHASE DESIGNATION DIAGRAM

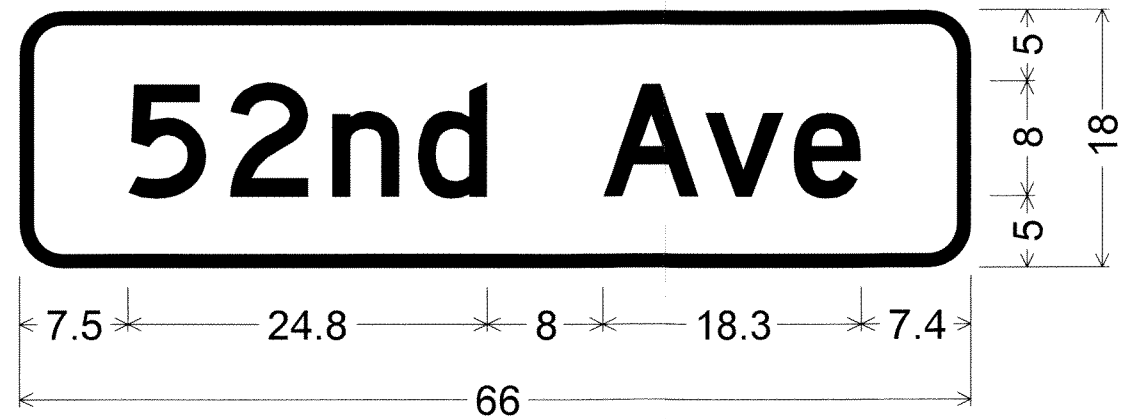


FILE NAME =	USER NAME = h11k1	DESIGNED -	REVISED -	STATE OF ILLINOIS DEPARTMENT OF TRANSPORTATION	27TH ST AT 36TH/38TH AVE PHASING AND CABLE SH		F.A.W. RTE. =	SECTION	COUNTY	TOTAL SHEETS	SHEET NO.
P:\Projects\Contract 64L31 27th St\64L31 plan sheets .dgn		DRAWN -	REVISED -		5838	1151S	ROCK ISLAND	13	12		
Default	PLOT SCALE = 42.421' / in.	CHECKED -	REVISED -		SCALE: _____ SHEET _____ OF _____ SHEETS STA. _____ TO STA. _____		ILLINOIS FED. AID PROJECT		CONTRACT NO. 64L31		
	PLOT DATE = Nov-30-2016 02:54:09 PM	DATE -	REVISED -								



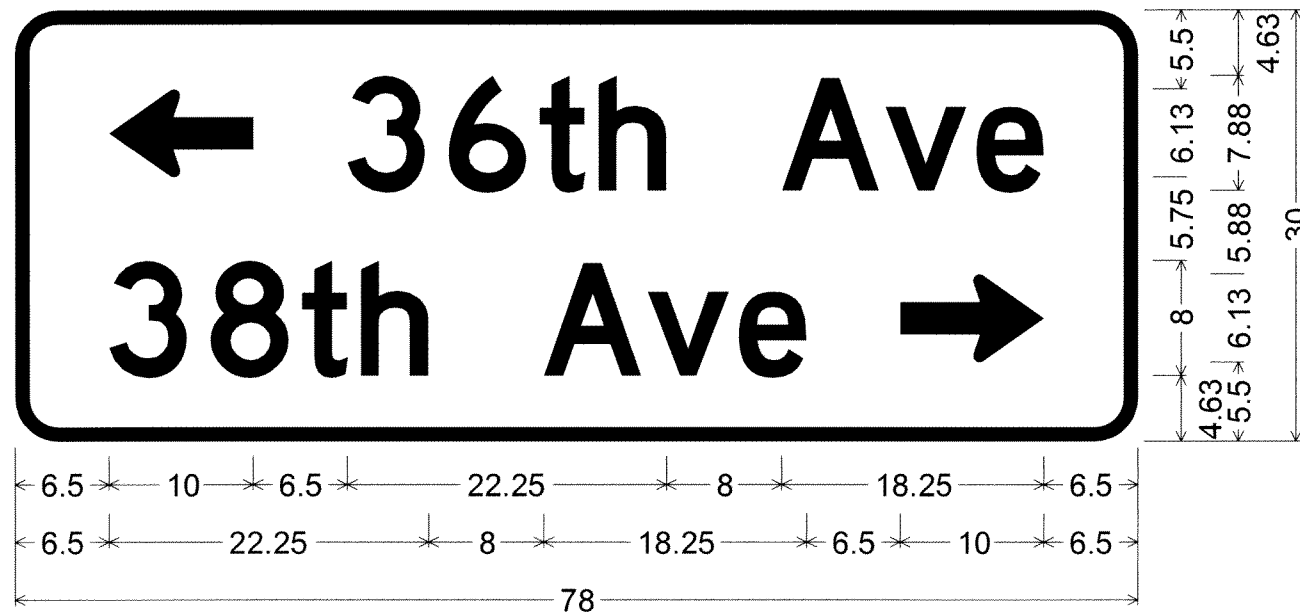
3.0" Radius, 1.0" Border, White on Green;
 [27th St] D 2K;
 Table of letter and object lefts.

2	7	t	h	S	t	
10.6	17.4	23.5	27.5	40.3	46.3	7.5 sq ft



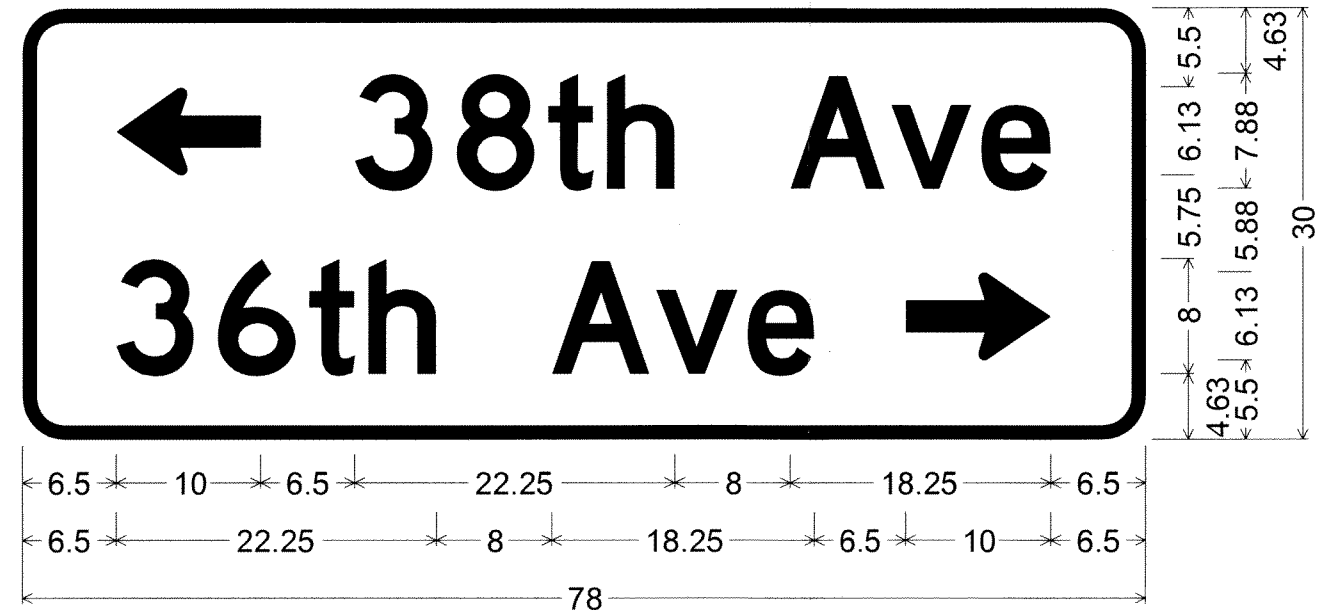
3.0" Radius, 1.0" Border, White on Green;
 [52nd Ave] D 2K;
 Table of letter and object lefts.

5	2	n	d	A	v	e	
7.5	14.5	21.5	27.5	40.3	47.5	53.8	8.25 sq ft



3.00" Radius, 1.00" Border, White on Green;
 Standard Arrow Custom 10.00" X 6.13" 180°; [36th Ave] D 2K;
 [38th Ave] D 2K; Standard Arrow Custom 10.00" X 6.13" 0°;
 Table of letter and object lefts.

←	3	6	t	h	A	v	e	
6.50	23.00	30.13	36.38	40.50	53.25	60.38	66.75	
3	8	t	h	A	v	e	→	
6.50	13.63	19.88	24.00	36.75	43.88	50.25	61.50	16.25 sq ft



3.00" Radius, 1.00" Border, White on Green;
 Standard Arrow Custom 10.00" X 6.13" 180°; [38th Ave] D 2K;
 [36th Ave] D 2K; Standard Arrow Custom 10.00" X 6.13" 0°;
 Table of letter and object lefts.

←	3	8	t	h	A	v	e	
6.50	23.00	30.13	36.38	40.50	53.25	60.38	66.75	
3	6	t	h	A	v	e	→	
6.50	13.63	19.88	24.00	36.75	43.88	50.25	61.50	16.25 sq ft