

STATE OF ILLINOIS
DEPARTMENT OF TRANSPORTATION

F.A.S. RTE.	SECTION	COUNTY	TOTAL SHEETS	SHEET NO.
836	(10-1,10-3)RS-3	WASHINGTON	6	1
		ILLINOIS	CONTRACT NO. 76K04	

FOR INDEX OF SHEETS, SEE SHEET NO. 2

PROPOSED HIGHWAY PLANS

FAS ROUTE 836 (OAKDALE-DuBOIS RD.)
SECTION (10-1,10-3)RS-3
MICROSURFACING
WASHINGTON COUNTY

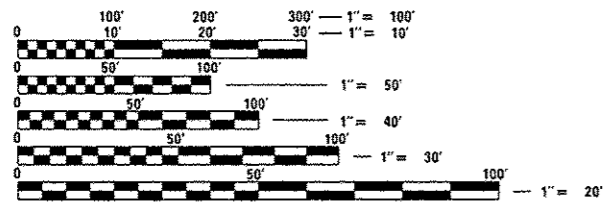
C-98-008-17

TRAFFIC DATA

2014 ADT = 750 (ACTUAL)
2017 ADT = 775 (ESTIMATED)
2037 ADT = 875 (ESTIMATED)
SU = 3.7%
MU = 3.3%

DESIGN DESIGNATION

NA

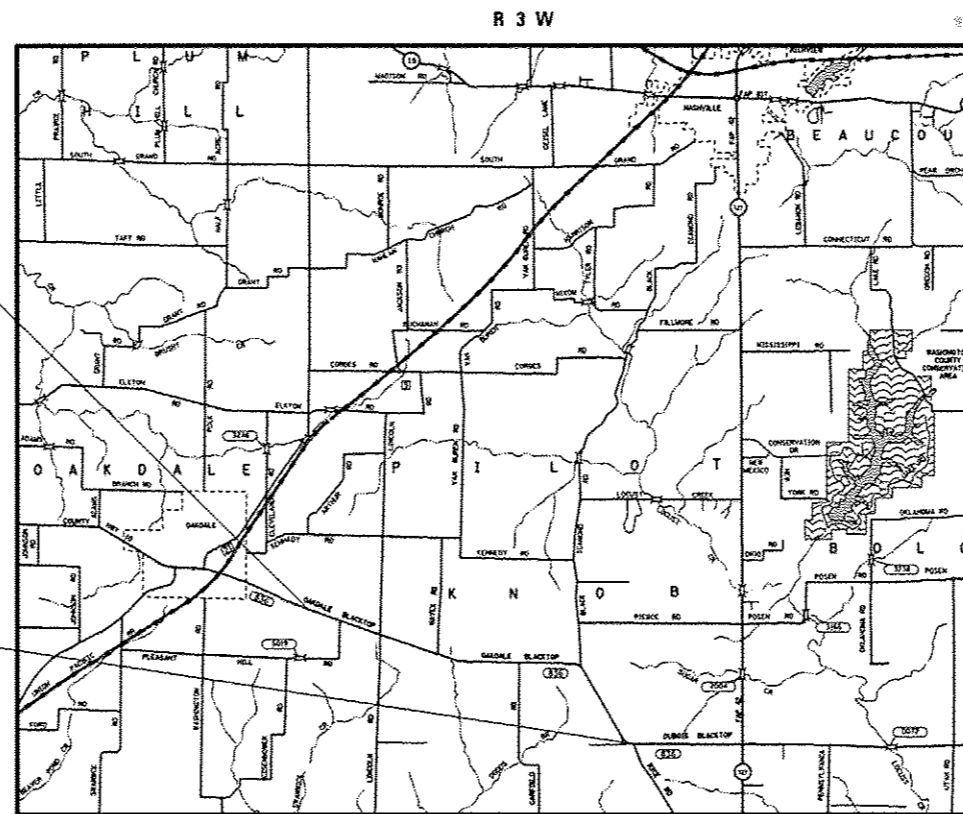


FULL SIZE PLANS HAVE BEEN PREPARED USING STANDARD ENGINEERING SCALES. REDUCED SIZED PLANS WILL NOT CONFORM TO STANDARD SCALES. IN MAKING MEASUREMENTS ON REDUCED PLANS, THE ABOVE SCALES MAY BE USED.

J.U.L.I.E.
JOINT UTILITY LOCATION INFORMATION FOR EXCAVATION
1-800-892-0123
OR 811

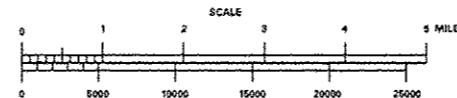
PROJECT ENGINEER: HERVE GELIN (618) 346-3179
PROJECT MANAGER: BILLIE OWEN (618) 346-3209

CONTRACT NO. 76K04

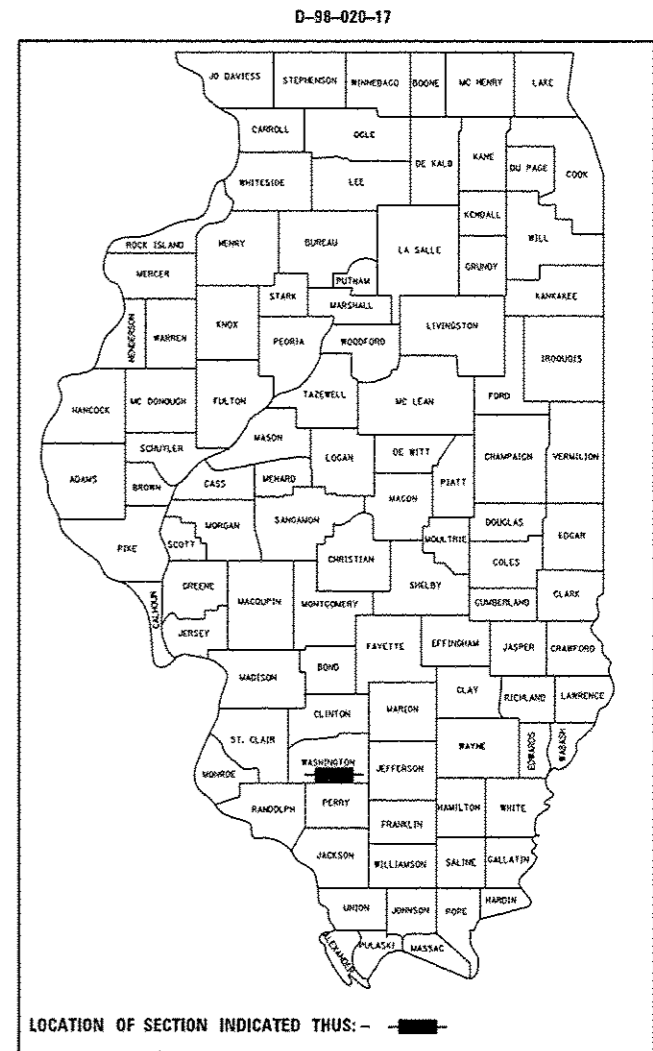


BEGIN PROJECT
STA. 0+00
LAT.: 38.2545°
LONG.: 89.4807°

END PROJECT
STA. 253+56
LAT.: 38.2292°
LONG.: 89.4046°



GROSS LENGTH / NET LENGTH = 25,356 FT. = 4.802 MILES



STATE OF ILLINOIS
DEPARTMENT OF TRANSPORTATION

SUBMITTED Dec 9, 2016

Jeffrey Z. Kane
REGIONAL ENGINEER

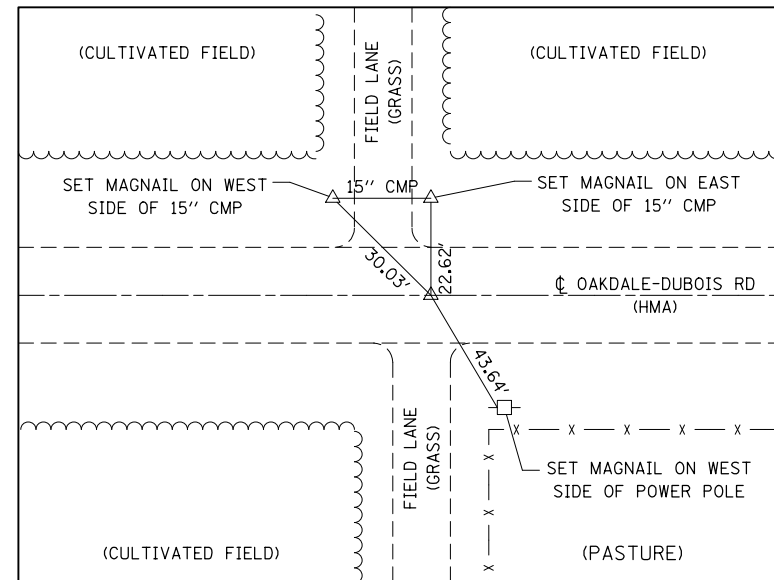
Jan 27, 2017

Maureen M. Addis PE
ENGINEER OF DESIGN AND ENVIRONMENT

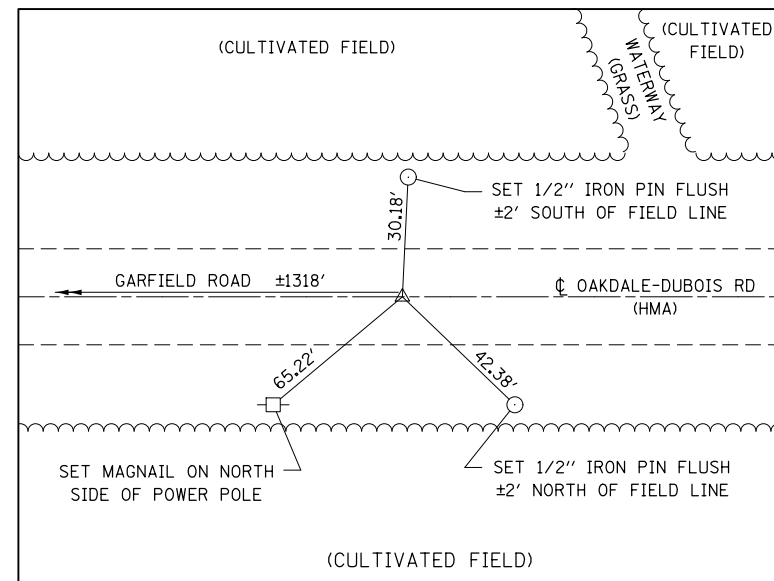
Jan 27, 2017

[Signature]
DIRECTOR OF PROGRAM DEVELOPMENT

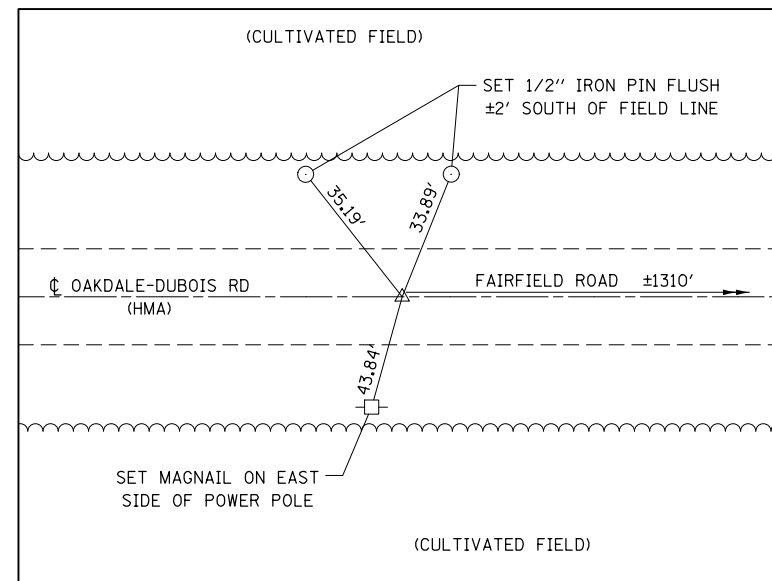
PRINTED BY THE AUTHORITY
OF THE STATE OF ILLINOIS



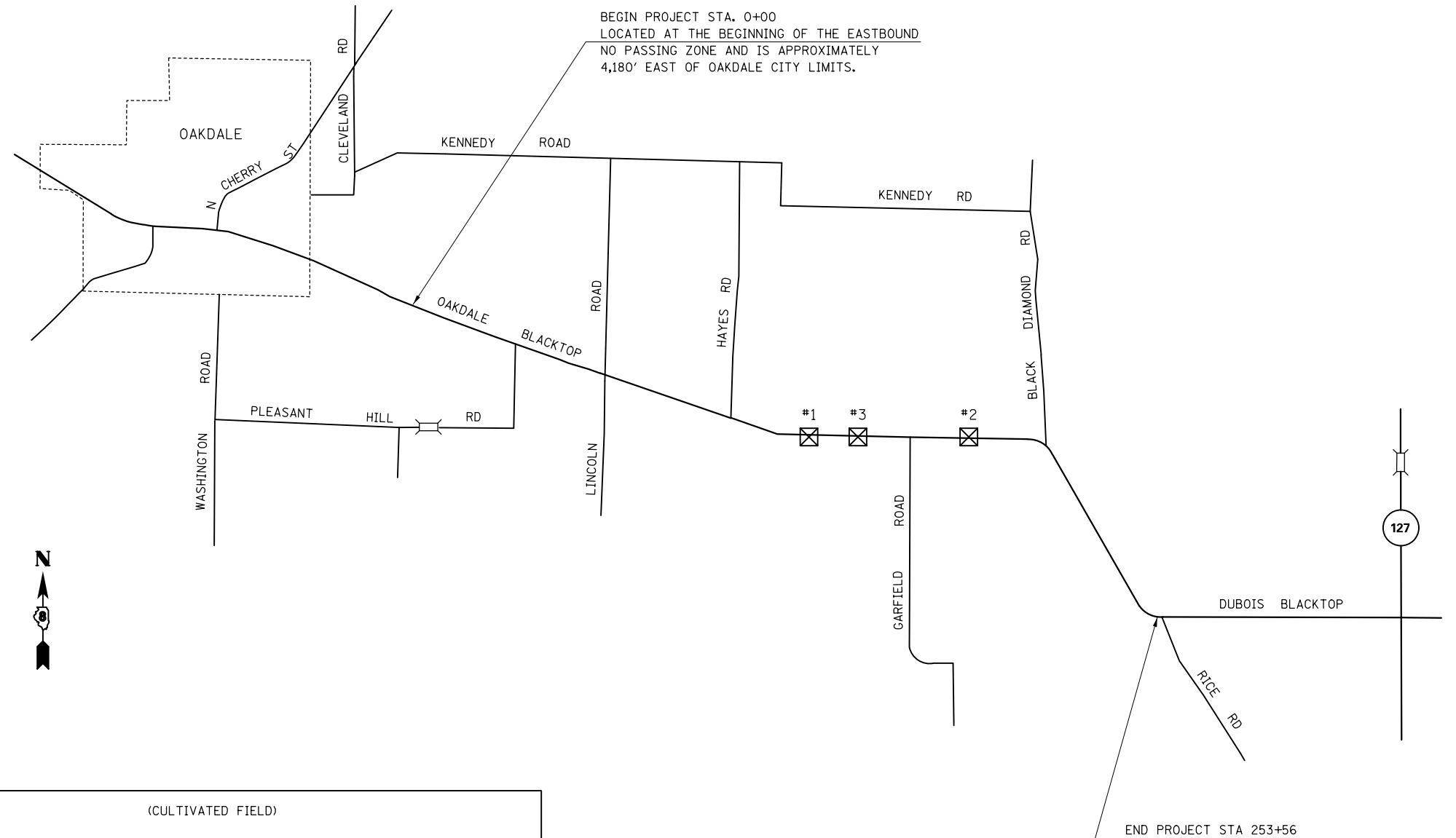
POINT #1
FOUND MAGNAIL FLUSH IN CENTERLINE
NW CORNER, SECTION 28, T.3S. - R.3W.



POINT #2
FOUND MAGNAIL WITH CUT "X" IN CENTERLINE OF ROAD
NE CORNER, SECTION 28, T.3S. - R.3W.



POINT #3
FOUND MAGNAIL WITH CUT "X" ±4.5' NORTH OF CENTERLINE
NORTH QUARTER CORNER, SECTION 28, T.3S. - R.3W.



BEGIN PROJECT STA. 0+00
LOCATED AT THE BEGINNING OF THE EASTBOUND
NO PASSING ZONE AND IS APPROXIMATELY
4,180' EAST OF OAKDALE CITY LIMITS.

END PROJECT STA 253+56

☒ - SURVEY MONUMENT COVER ASSEMBLY - 3 EACH

NOTES: NOT TO SCALE.
ALL TIES ARE PULLED DIRECT.

FILE NAME =	USER NAME = harbaughrd	DESIGNED -	REVISED -
pw:\11084EBIDINTEG.illinois.gov\PIWIDOT\Documents\IDOT Offices\District 8\Projects\0876\DRAWING\DATA\EA0\Sheets\D876K04-sht-ATB.dwg		CHECKED -	REVISED -
		DATE -	REVISED -

STATE OF ILLINOIS
DEPARTMENT OF TRANSPORTATION

TIE POINTS & LOCATION MAP

SCALE: NA SHEET NO. 1 OF 1 SHEETS STA. TO STA.

F.A.S. RTE.	SECTION	COUNTY	TOTAL SHEETS	SHEET NO.
836	(10-1,10-3)RS-3	WASHINGTON	6	4
CONTRACT NO. 76K04				
FED. ROAD DIST. NO. ILLINOIS FED. AID PROJECT				

MICRO-SURFACING SCHEDULE

LOCATION		LENGTH	WIDTH	MICRO-SURFACING, SINGLE PASS TYPE II, MIXTURE D	AGGREGATE WEDGE SHOULDER, TYPE B	
STA.	TO STA.	FOOT	FOOT	SQ YD	LEFT TON	RIGHT TON
0+00	TO 27+95	2,795	23	7,142.8	51.8	51.8
27+95	TO 28+41	46	23	117.6		0.9
28+41	TO 55+75	2,734	23	6,986.9	50.7	50.7
55+75	TO 56+21	46	23	117.6		
56+21	TO 56+33	12	23	30.7		0.2
56+33	TO 97+22	4,089	23	10,449.7	75.8	75.8
97+22	TO 97+75	53	23	135.4	0.9	
97+75	TO 150+71	5,296	23	13,534.3	98.1	98.1
150+71	TO 151+21	50	23	127.8		0.9
151+21	TO 190+12	3,891	23	9,943.7	72.1	72.1
190+12	TO 190+62	50	23	127.8	0.9	
190+62	TO 253+56	6,294	23	16,084.7	116.6	116.6
SUBTOTAL					466.9	467.1
TOTAL				25,356	64,799.0	934

PAVEMENT MARKING SCHEDULE

LOCATION		LENGTH	PAVEMENT MARKING REMOVAL - GRINDING	SHORT TERM PAVEMENT MARKING	SHORT TERM PAVEMENT MARKING REMOVAL	THERMOPLASTIC PAVEMENT MARKING - LINE 4"						COMMENTS	
						CENTERLINE - YELLOW			EDGE LINE				
						SOLID		SKIP-DASH		SOLID WHITE			
STA.	TO STA.	FT	SQ FT	FOOT	SQ FT	EB FOOT	WB FOOT	EB FOOT	WB FOOT	EB FOOT	WB FOOT		
0+00	TO 7+30	730	790.9	68	22.7	730				182.5	730	730	
7+30	TO 11+17	387	322.5	36	12			96.8	96.8	387	387		
11+17	TO 18+22	705	763.8	68	22.7		705	176.3		705	705		
18+22	TO 24+42	620	516.7	60	20			155	155	620	620		
24+42	TO 27+95	353	382.5	36	12	353				88.3	353	353	
27+95	TO 28+41	46	34.5	8	2.7	46				11.5		46	PLEASANT HILL RD (TR 267)
28+41	TO 35+10	669	724.8	64	21.3	669				167.3	669	669	
35+10	TO 35+81	71	94.7	8	2.7	71	71			71	71		
35+81	TO 47+32	1151	1247	108	36		1151	287.8		1151	1151		
47+32	TO 55+75	843	913.3	80	26.7	843				210.8	843	843	
55+75	TO 56+21	46	7.7	8	2.7			11.5	11.5				LINCOLN RD (TR 112)
56+21	TO 56+33	12	6	4	1.3			3	3		12		
56+33	TO 89+28	3295	2745.9	300	100			823.8	823.8	3295	3295		
89+28	TO 97+22	794	860.2	76	25.3	794				198.5	794	794	
97+22	TO 97+75	53	39.8	8	2.7	53				13.3	53		HAYES RD (TR 124)
97+75	TO 100+79	304	329.3	28	9.3	304				76	304	304	
100+79	TO 111+48	1069	1425.4	100	33.4	1069	1069			1069	1069		
111+48	TO 122+91	1143	1238.3	104	34.7		1143	285.8		1143	1143		
122+91	TO 147+66	2475	2062.5	228	76			618.8	618.8	2475	2475		
147+66	TO 150+71	305	330.5	28	9.3	305				76.3	305	305	
150+71	TO 151+21	50	37.5	8	2.7	50				12.5		50	GARFIELD RD (TR 134)
151+21	TO 153+17	196	212.3	20	6.7	196				49	196	196	
153+17	TO 161+19	802	668.4	76	25.3			200.5	200.5	802	802		
161+19	TO 166+95	576	624	56	18.7		576	144		576	576		
166+95	TO 169+16	221	184.2	24	8			55.3	55.3	221	221		
169+16	TO 179+68	1052	1139.7	96	32	1052				263	1052	1052	
179+68	TO 190+12	1044	1392	96	32	1044	1044			1044	1044		
190+12	TO 190+62	50	50	8	2.7	50	50			50			BLACK DIAMOND RD (TR 140)
190+62	TO 192+53	191	254.7	20	6.7	191	191			191	191		
192+53	TO 202+56	1003	1086.6	92	30.7		1003	250.8		1003	1003		
202+56	TO 245+91	4335	3612.5	396	132			1083.8	1083.8	4335	4335		(TR 150B)
245+91	TO 253+56	765	828.8	72	24	765				191.3	765	765	(TR 150A)
SUB-TOTAL						8,585.0	7,003.0	4,193.2	4,588.8	25,202.0	25,207.0		
TOTAL		25356	24,927.0	2,384.0	795.0	74,779.0							