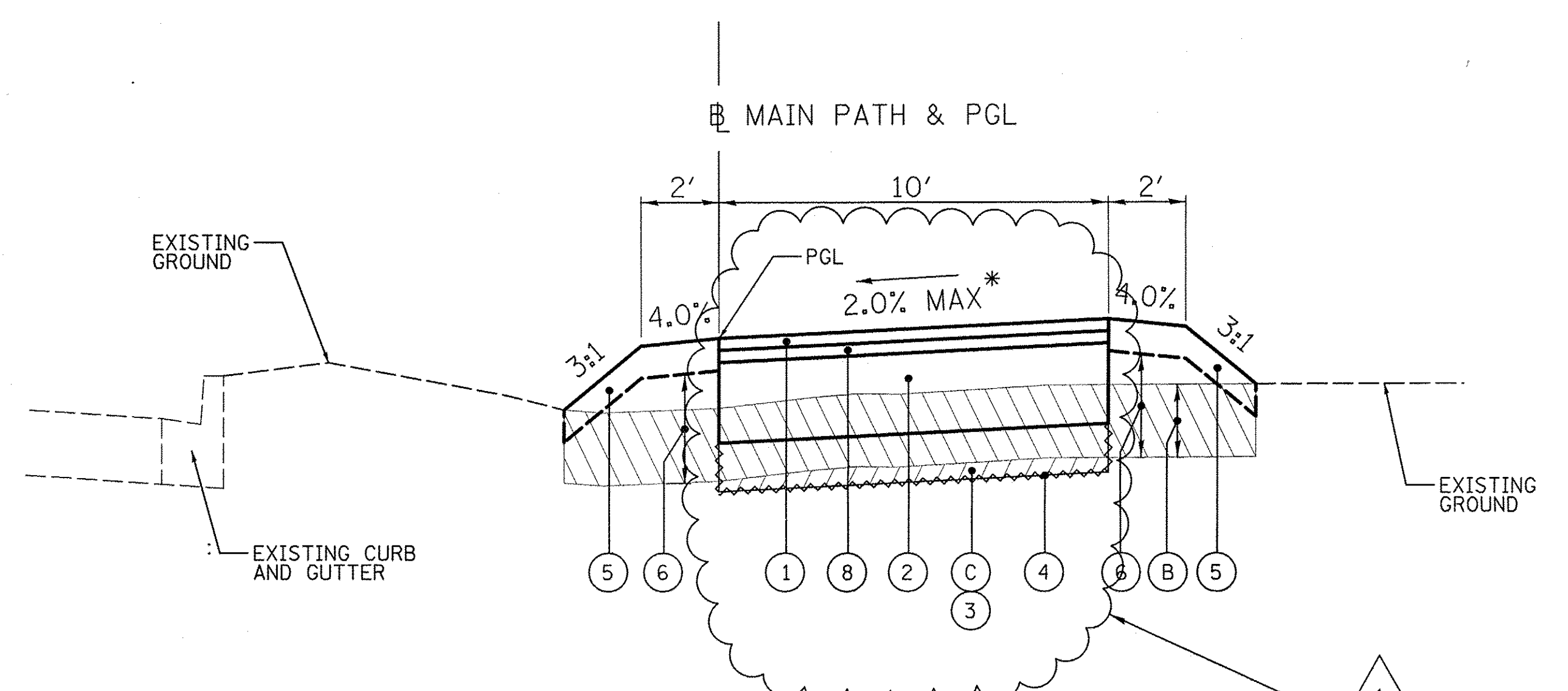


EXISTING AND PROPOSED TYPICAL SECTION
 STA. 100+00 TO STA. 102+00, OLD ORCHARD ROAD
 STA. 107+00 TO STA. 112+00, OLD ORCHARD ROAD
 STA. 113+50 TO STA. 119+50, OLD ORCHARD ROAD
 STA. 122+00 TO STA. 122+96, OLD ORCHARD ROAD



EXISTING AND PROPOSED TYPICAL SECTION
 STA. 102+00 TO STA. 107+00, OLD ORCHARD ROAD
 STA. 112+00 TO STA. 113+50, OLD ORCHARD ROAD
 STA. 119+50 TO STA. 122+00, OLD ORCHARD ROAD

* BIKE PATH TO BE REVERSE PITCHED AND SLOPED DOWNWARD AT 2% (MAX) AWAY FROM THE PGL AT THE FOLLOWING STATION RANGES:
 STA. 100+60 TO STA. 101+50
 STA. 106+50 TO STA. 107+50
 STA. 112+00 TO STA. 113+00
 STA. 120+00 TO STA. 121+50
 (SEE CROSS SECTIONS)
 ALL CROSS SLOPE TRANSITIONS SHALL OCCUR OVER 60' SUCH AS:
 STA. 100+00 TO STA. 100+60 AND STA. 101+50 TO STA. 102+10

LEGEND

- (A) EARTH EXCAVATION (20200100)
- (B) REMOVAL AND DISPOSAL OF UNSUITABLE MATERIAL (FOR TOPSOIL STRIP; 9" NOMINAL) (20201200)
- (C) REMOVAL AND DISPOSAL OF UNSUITABLE MATERIAL (FOR UNDERCUTS) (20201200) **
- ▨ REMOVAL ITEMS

- (1) 1 1/2" HOT-MIX ASPHALT SURFACE COURSE, MIX "D", N50 (40603335)
- (2) AGGREGATE BASE COURSE, TYPE B, 10" (35102200) [1]
- (3) AGGREGATE SUBGRADE IMPROVEMENT (30300001) [1] **
- (4) GEOTECHNICAL FABRIC FOR GROUND STABILIZATION (21001000) **
- (5) TOPSOIL FURNISH AND PLACE, 4" (21101615)
- (6) EMBANKMENT (INCLUDED IN COST OF EARTH EXCAVATION - 20200100 OR PAID FOR AS FURNISHED EXCAVATION - 20400800)
- (7) AGGREGATE SURFACE COURSE, TYPE B 3" (SPECIAL) (XX008310)
- (8) 2 1/4" HOT-MIX ASPHALT BINDER COURSE, IL-19.0, N50 (40603080)

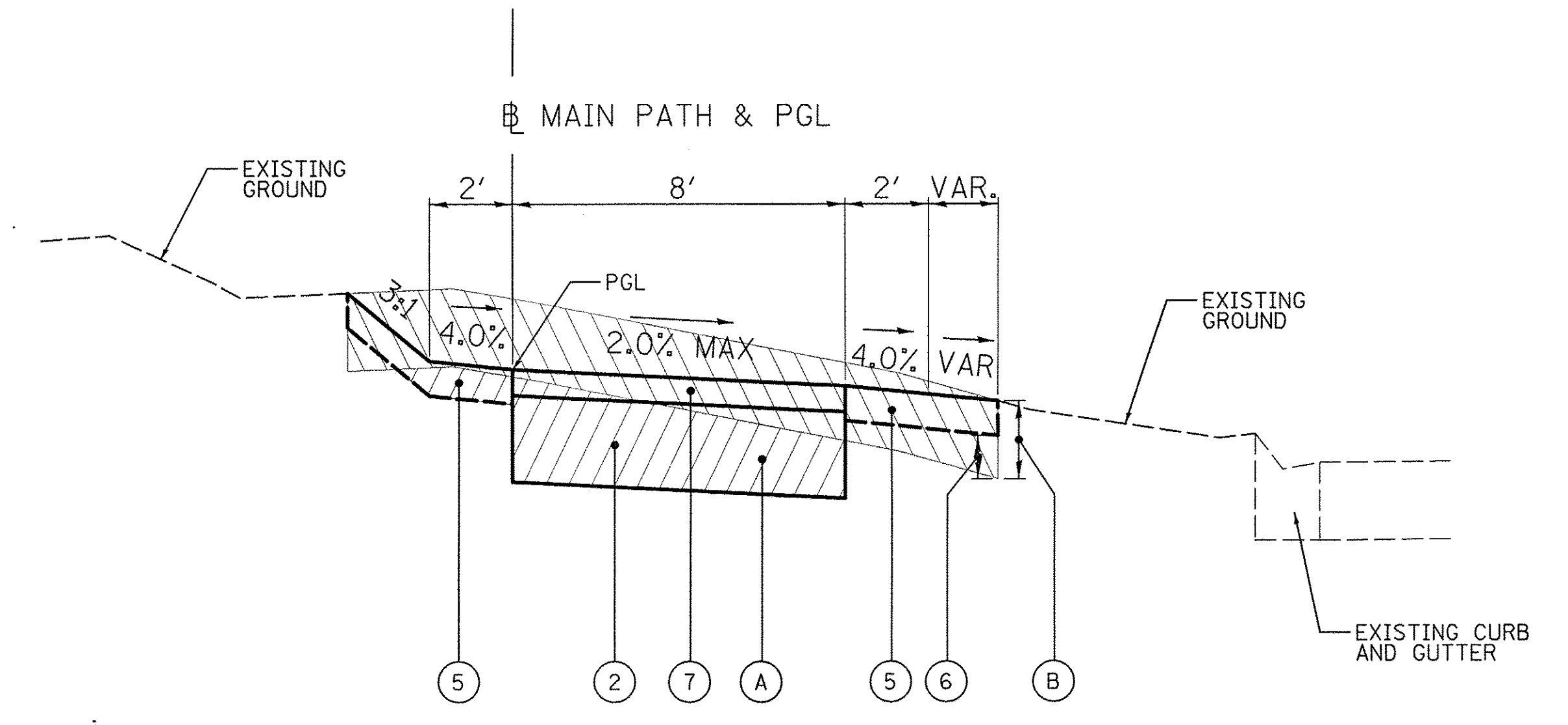
* REVERSE CROSS SLOPE (2% MAX) AT LOCATIONS SHOWN IN THE CROSS SECTIONS

HOT-MIX ASPHALT MIXTURE REQUIREMENTS	
MIXTURE TYPE	AIR VOIDS @NDES
SHARED USE PATH	
HOT-MIX ASPHALT SURFACE COURSE, MIX "D", N50 (IL 9.5 mm), 1 1/2"	4% @ 50 GYR.
HOT-MIX ASPHALT BINDER COURSE, MIX "D", IL-19.0, N50, 2 1/4"	4% @ 50 GYR.

THE UNIT WEIGHT USED TO CALCULATE ALL HOT-MIX ASPHALT SURFACE MIXTURES IS 112 LBS/SQYD/IN.
 THE "AC TYPE" FOR NON-POLYMERIZED HMA MIXES SHALL BE "PG 64-22" UNLESS MODIFIED BY DISTRICT ONE SPECIAL PROVISIONS FOR "PERCENT OF RAP". SEE SPECIAL PROVISIONS.

** AS DIRECTED BY THE ENGINEER

[1] TO PREVENT CHANGES IN SOIL PH, THE USE OF LIMESTONE BASED AGGREGATES WILL NOT BE ALLOWED IN THESE PAY ITEMS. SEE "COARSE AGGREGATES" SPECIAL PROVISION FOR MORE INFORMATION.



EXISTING AND PROPOSED TYPICAL SECTION
 STA. 200+00 TO STA. 202+53, WOODS DRIVE