

F.A.U. R.T.E.	SECTION	COUNTY	TOTAL SHEETS	SHEET NO.
7975	15-HSRT3-04-RR	SANGAMON	13	1
		ILLINOIS	CONTRACT NO. 93641	

INDEX OF SHEETS

- 1 COVER SHEET
- 2 HIGHWAY STANDARDS, GENERAL NOTES AND COMMITMENTS
- 3 - 5 SUMMARY OF QUANTITIES
- 6 - 7 TRAFFIC SIGNAL PLAN
CARPENTER STREET (FAU7975) (N. 2ND ST. - N. 4TH ST.)
- 8 TRAFFIC SIGNAL CABLE PLAN AND SCHEDULE OF QUANTITIES
CARPENTER STREET (N. 2ND ST. - N. 4TH ST.)
- 9 TRAFFIC SIGNAL SEQUENCE OF OPERATION
CARPENTER STREET (N. 2ND ST. - N. 4TH ST.)
- 10 RAILROAD PREEMPTION SEQUENCE OF OPERATION
CARPENTER STREET (N. 2ND ST. - N. 4TH ST.)
- 11 TRAFFIC SIGNAL DETAILS
- 12 CONDUIT INSTALLATION UNDER RAILROAD TRACKS DETAIL
CARPENTER STREET (N. 2ND ST. - N. 4TH ST.)
- 13 TRAFFIC CONTROL AND PROTECTION DETAIL

**DEPARTMENT OF TRANSPORTATION
DIVISION OF HIGHWAYS**

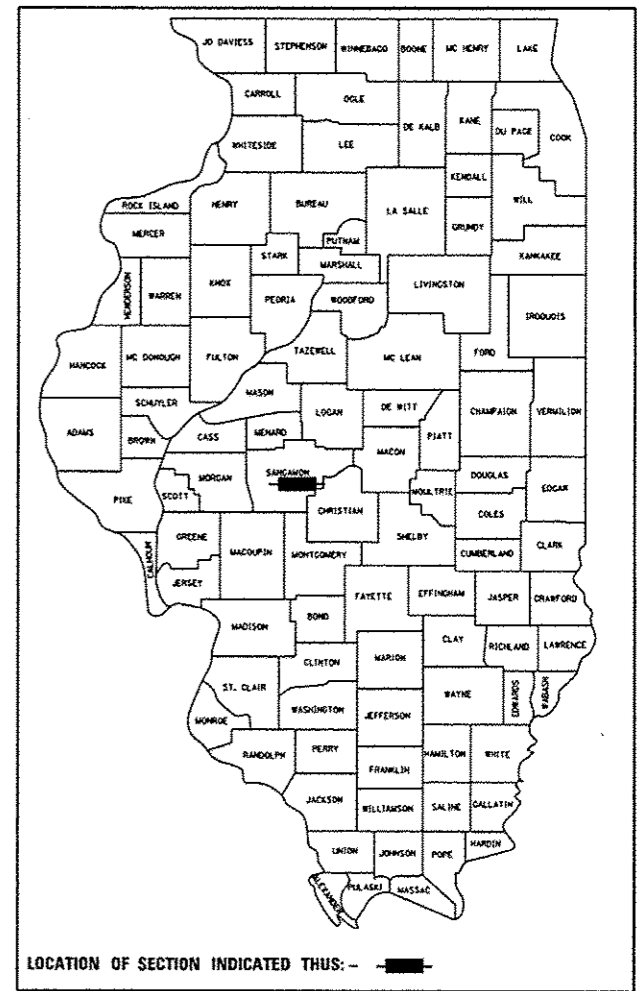
**PROPOSED
HIGHWAY PLANS**

**F.A.U. ROUTE 7975 (CARPENTER STREET)
SECTION 15-HSRT3-04-RR
PROJECT**

**TRAFFIC SIGNAL AND RAILROAD
INTERCONNECT MODIFICATIONS
SANGAMON COUNTY /CITY OF SPRINGFIELD**

C-96-228-15

D-96-228-15
DOT#294302N
MP 184.75



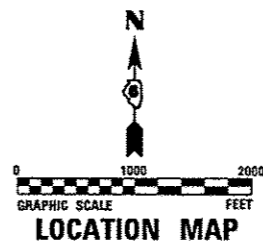
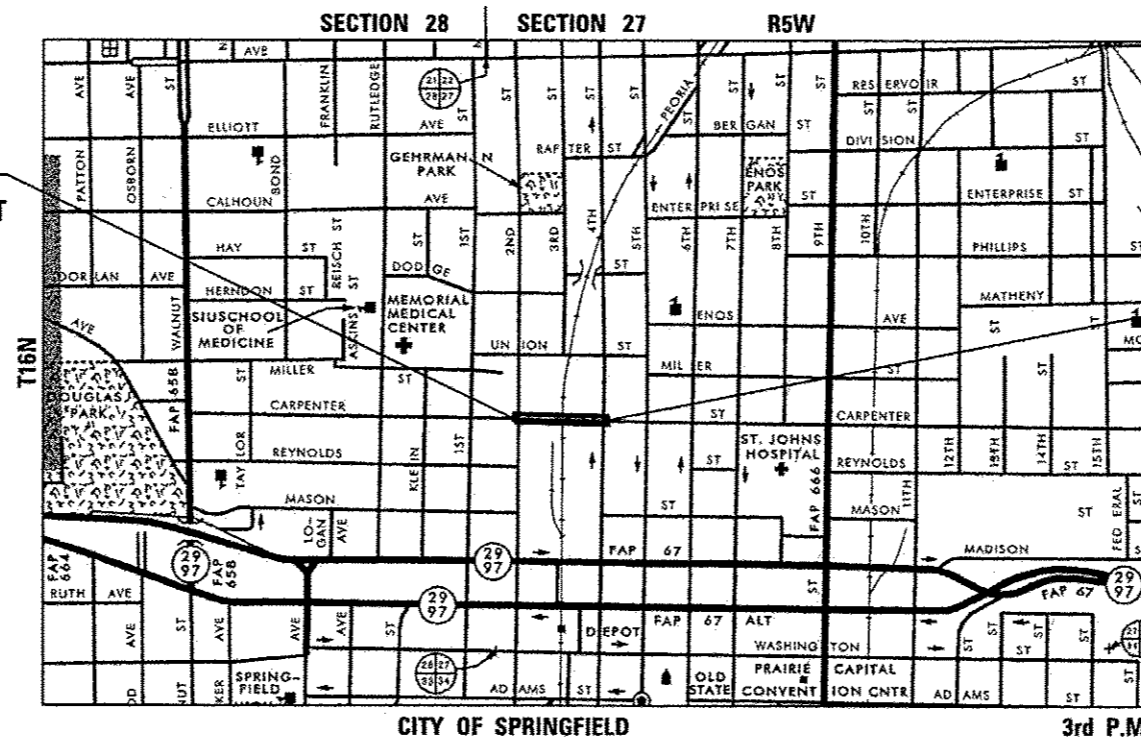
FUNCTIONAL CLASSIFICATION

URBAN MINOR ARTERIAL (CARPENTER STREET)

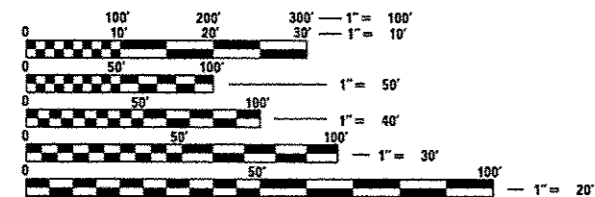
2012 ADT = 9,900

P.V. = N/A S.U. = N/A M.U. = N/A

BEGIN PROJECT
CARPENTER STREET
STA. 45 + 45.00



END PROJECT
CARPENTER STREET
STA. 53 + 57.00



FULL SIZE PLANS HAVE BEEN PREPARED USING STANDARD ENGINEERING SCALES. REDUCED SIZED PLANS WILL NOT CONFORM TO STANDARD SCALES. IN MAKING MEASUREMENTS ON REDUCED PLANS, THE ABOVE SCALES MAY BE USED.

J.U.L.I.E.
JOINT UTILITY LOCATION INFORMATION FOR EXCAVATION
1-800-892-0123
OR 811

DISTRICT 6 NO. (217) 782-7301
PROJECT ENGINEER: JAY WAVERING (217)785-9046
TOWNSHIP: CAPITAL

CONTRACT NO. 93641

CARPENTER STREET NET LENGTH 812.00 FT (0.154 MI) GROSS LENGTH 812.00 FT (0.154 MI)

AECOM AECOM Technical Services, Inc.
303 E. WACKER DRIVE, SUITE 1400
CHICAGO, ILLINOIS 60601
PH. 312-373-7700

MATTHEW J. LETOURNEAU
LICENSED PROFESSIONAL ENGINEER
OF ILLINOIS

DATE: 11/23/2016
MATTHEW J. LETOURNEAU
IL. REG. P.E. NO. 062-055763
EXPIRES: 11/30/2017

STATE OF ILLINOIS
DEPARTMENT OF TRANSPORTATION
DIVISION OF HIGHWAYS

SUBMITTED 12/23/2016
[Signature]
DEPUTY DIRECTOR OF HIGHWAYS, REGION ENGINEER

Jan 27 2017
Maureen M. Addis, P.E.
ENGINEER OF DESIGN AND ENVIRONMENT

Jan 22 2017
[Signature]
DIRECTOR OF HIGHWAYS, CHIEF ENGINEER

PRINTED BY THE AUTHORITY
OF THE STATE OF ILLINOIS

HIGHWAY STANDARDS

000001-06	STANDARD SYMBOLS, ABBREVIATIONS AND PATTERNS
701601-09	URBAN LANE CLOSURE, MULTILANE, 1W OR 2W WITH NONTRAVERSABLE MEDIAN
701701-10	URBAN LANE CLOSURE, MULTILANE INTERSECTION
701801-06	SIDEWALK, CORNER OR CROSSWALK CLOSURE
701901-06	TRAFFIC CONTROL DEVICES
720001-01	SIGN PANEL MOUNTING DETAILS
814001-03	HANDHOLES
857001-01	STANDARD PHASE DESIGNATION DIAGRAMS AND PHASE SEQUENCES
857006-01	SUPERVISED RAILROAD INTERCONNECT CIRCUIT
862001-01	UNINTERRUPTABLE POWER SUPPLY (UPS)
873001-02	TRAFFIC SIGNAL GROUNDING & BONDING
877001-06	STEEL MAST ARM ASSEMBLY AND POLE 16' THROUGH 55'
878001-10	CONCRETE FOUNDATION DETAILS
880006-01	TRAFFIC SIGNAL MOUNTING DETAILS

GENERAL NOTES

1. NO WORK SHALL COMMENCE UNTIL TRAFFIC CONTROL REQUIREMENTS ARE MET. THE CONTRACTOR SHALL DEVELOP A PLAN TO ACCOMPLISH THIS WORK AND MINIMIZE DISRUPTION OF VEHICULAR, RAIL, AND PEDESTRIAN TRAFFIC. THIS PLAN SHALL BE SUBMITTED TO THE ENGINEER FOR APPROVAL.
2. ALL UTILITIES, SCHOOL DISTRICTS, LOCAL POLICE, AND FIRE DEPARTMENTS SHALL BE NOTIFIED BY THE CONTRACTOR A MINIMUM OF 48 HOURS PRIOR TO THE START OF CONSTRUCTION.
3. THE CONTRACTOR SHALL BE REQUIRED TO PROVIDE AND MAINTAIN ACCESS TO ABUTTING PROPERTIES AT ALL TIMES DURING CONSTRUCTION OF THE PROJECT.
4. THE CONTRACTOR SHALL BE REQUIRED TO COMPLY WITH STATE REGULATIONS REGARDING AIR, WATER, AND NOISE POLLUTION.
5. IT SHALL BE THE CONTRACTOR'S RESPONSIBILITY TO DETERMINE THE ACTUAL LOCATION OF ALL UNDERGROUND UTILITY FACILITIES. HE SHALL ALSO OBTAIN FROM THE RESPECTIVE UTILITY COMPANIES DETAILED INFORMATION RELATIVE TO THE LOCATION OF THEIR FACILITIES AND THE WORKING SCHEDULES OF THE UTILITY COMPANIES FOR THEIR MARKING OF THE EXACT LOCATION PRIOR TO CONSTRUCTION.
6. BEFORE STARTING ANY WORK, THE CONTRACTOR SHALL CALL "JULIE" AT 1-800-892-0123 OR 811 FOR FIELD LOCATIONS OF BURIED ELECTRIC, TELEPHONE, AND GAS FACILITIES (MINIMUM 48 HOURS NOTIFICATION IS REQUIRED). THE CONTRACTOR SHALL CALL THE UNION PACIFIC "CALL BEFORE YOU DIG" OPERATION AT 1-800-336-9193 FOR FIELD LOCATIONS OF UNION PACIFIC OWNED BURIED FIBER OPTIC CABLES IN UNION PACIFIC RIGHT OF WAY.
7. MEMBERS OF JULIE KNOWN TO BE WITHIN THE LIMITS OF THE IMPROVEMENT ARE:
 1. AMEREN GAS
 2. AT&T
 3. CITY OF SPRINGFIELD, PUBLIC WORKS
 4. CITY WATER LIGHT AND POWER
 5. COMCAST
 6. SPRINGFIELD METRO SANITARY DISTRICT
 7. SPRINT
8. NON-MEMBERS OF JULIE KNOWN TO BE WITHIN THE LIMITS OF THE IMPROVEMENT ARE:
 1. UNION PACIFIC RAILROAD COMPANY (FIBER OPTIC)
 2. UNION PACIFIC RAILROAD, IL HSR PROGRAM (RAILROAD SIGNALS)
9. THE CONTRACTOR SHALL COORDINATE WITH THE UPRR SIGNAL DEPARTMENT FOR ITEMS REMOVED OR INSTALLED BY THE UPRR SIGNAL DEPARTMENT.
10. U.P.R.R. FLAGGERS SHALL BE PRESENT WHEN WORKING WITHIN THE U.P.P.R. RIGHT-OF-WAY. THE CONTRACTOR SHALL COORDINATE DIRECTLY WITH THE U.P.P.R. TO ASSURE THAT FLAGGERS ARE PRESENT DURING CONSTRUCTION. NO ADDITIONAL COMPENSATION WILL BE ALLOWED.
11. FOR STABILIZATION, ALL TYPE III BARRICADES (WHERE NEEDED) SHALL REQUIRE A MINIMUM OF FOUR SAND BAGS PER BARRICADE.
12. SEEDING SHALL NOT BE PERMITTED AT ANY TIME WHEN THE GROUND IS FROZEN, WET OR IN AN UNTILLABLE CONDITION. THE AREAS TO BE SEEDED SHALL CONSIST OF ALL DISTURBED EARTH SURFACES WITHIN THE RIGHT-OF-WAY. LOCATIONS TO BE SEEDED WILL BE DETERMINED BY THE ENGINEER.
13. ABANDONED UNDERGROUND UTILITIES THAT CONFLICT WITH CONSTRUCTION SHALL BE DISPOSED OF OUTSIDE THE LIMITS OF THE RIGHT OF WAY ACCORDING TO ARTICLE 202.03 OF THE STANDARD SPECIFICATIONS AND AS DIRECTED BY THE ENGINEER. THIS WORK WILL NOT BE PAID FOR SEPARATELY, BUT SHALL BE INCLUDED IN THE COST OF "MODIFY EXISTING CONTROLLER FOUNDATION".
14. ANY REFERENCE TO A STANDARD IN THESE PLANS SHALL BE INTERPRETED TO MEAN THE EDITION AS INDICATED BY THE SUB NUMBER SHOWN IN THE LIST OF HIGHWAY STANDARDS INCLUDED ON THIS SHEET OR REFERENCED IN THESE PLANS.
15. THE CONTRACTOR SHALL KEEP EXISTING ADJACENT STREETS CLEAN OF DIRT, MUD, AND OTHER DEBRIS AND, WHEN NECESSARY, CLEAN SAID PAVEMENTS ON A DAILY BASIS OR WHEN DIRECTED BY THE ENGINEER. NO EXTRA COMPENSATION SHALL BE ALLOWED THE CONTRACTOR FOR THIS WORK.
16. THE SCALE SHOWN ON THE DRAWINGS APPLIES ONLY TO FULL SIZE PLANS AND NOT TO THE REDUCED SIZE PLANS. REDUCED SIZED PLANS CAN BE PRINTED TO SCALE FOR USE IN THE FIELD.
17. WHERE ENCOUNTERED, THE ENGINEER SHALL BE NOTIFIED OF ANY SECTION OR SUB-SECTION MONUMENTS. BEFORE SUCH MONUMENTS ARE REMOVED, THE CONTRACTOR SHALL PROTECT AND CAREFULLY PRESERVE ALL PROPERTY MARKERS AND MONUMENTS UNTIL THE OWNER OR AN AUTHORIZED SURVEYOR OR AGENT HAS WITNESSED OR OTHERWISE REFERENCED THEIR LOCATION.

COMMITMENTS

NONE.
November 23, 2016

FILE NAME: c:\pwork\king\kevin.o'neill\transportation\docs\8899\241324\SH1-Notes.dwg



USER NAME = kevin.o'neill	DESIGNED - KMO	REVISED -
	DRAWN - KMO	REVISED -
PLOT SCALE = 48.0000' / in.	CHECKED - MJL	REVISED -
PLOT DATE = 11/23/2016	DATE - 11/23/2016	REVISED -

**STATE OF ILLINOIS
DEPARTMENT OF TRANSPORTATION**

**HIGHWAY STANDARDS, GENERAL NOTES
AND COMMITMENTS**

SCALE: NONE SHEET 1 OF 1 SHEETS STA. TO STA.

F.A.U. RTE.	SECTION	COUNTY	TOTAL SHEETS	SHEET NO.
7975	15-HRST3-04-RR	SANGAMON	13	2
CONTRACT NO. 93641				
ILLINOIS FED. AID PROJECT				

SUMMARY OF QUANTITIES

ITEM NO.	ITEM DESCRIPTION	UNIT	TOTAL QUANTITY	CONSTRUCTION CODE
				SIGNALS
				CARPENTER ST.
				100% HSR
				0021
21101615	TOPSOIL FURNISH AND PLACE, 4"	SO YD	180	180
25200100	SODDING	SO YD	180	180
* 42400100	PORTLAND CEMENT CONCRETE SIDEWALK 4 INCH	SQ FT	100	100
* 44000600	SIDEWALK REMOVAL	SQ FT	100	100
67100100	MOBILIZATION	LSUM	1	1
70102630	TRAFFIC CONTROL AND PROTECTION, STANDARD 701601	LSUM	1	1
70102635	TRAFFIC CONTROL AND PROTECTION, STANDARD 701701	LSUM	1	1
70102640	TRAFFIC CONTROL AND PROTECTION, STANDARD 701801	LSUM	1	1
70106800	CHANGEABLE MESSAGE SIGN	CAL MO	2	2
72000100	SIGN PANEL - TYPE 1	SQ FT	68	68
81028350	UNDERGROUND CONDUIT, PVC, 2" DIA.	FOOT	785	785
81028370	UNDERGROUND CONDUIT, PVC, 3" DIA.	FOOT	63	63
81028390	UNDERGROUND CONDUIT, PVC, 4" DIA.	FOOT	143	143
81400100	HANDHOLE	EACH	4	4
85000200	MAINTENANCE OF EXISTING TRAFFIC SIGNAL INSTALLATION	EACH	2	2
86400100	TRANSCEIVER - FIBER OPTIC	EACH	2	2

* DENOTES SPECIALTY ITEM

FILE NAME: c:\pwworking\kenneth.donnelly\temp\pwworking\158599\204322H-SHT-500.dwg



USER NAME = kevin.onell
 PLOT SCALE = 40.0000' / in.
 PLOT DATE = 11/23/2016

DESIGNED - KMD
 DRAWN - KMD
 CHECKED - MJL
 DATE - 11/23/2016

REVISED -
 REVISED -
 REVISED -
 REVISED -

**STATE OF ILLINOIS
 DEPARTMENT OF TRANSPORTATION**

SUMMARY OF QUANTITIES

SCALE: NONE SHEET 1 OF 3 SHEETS STA. TO STA.

F.A.U. RTE.	SECTION	COUNTY	TOTAL SHEETS	SHEET NO.
7975	15-HRST3-04-RR	SANGAMON	13	3
ILLINOIS FED. AID PROJECT			CONTRACT NO. 93641	

SUMMARY OF QUANTITIES

ITEM NO.	ITEM DESCRIPTION	UNIT	TOTAL QUANTITY	CONSTRUCTION CODE	
				SIGNALS CARPENTER ST.	100% HSR
					0021
87100020	FIBER OPTIC CABLE IN CONDUIT, NO. 62. 5/125, MM12F SM12F	FOOT	808		808
87300925	ELECTRIC CABLE IN CONDUIT, TRACER, NO. 14 1C	FOOT	808		808
87301225	ELECTRIC CABLE IN CONDUIT, SIGNAL NO. 14 3C	FOOT	376		376
87301245	ELECTRIC CABLE IN CONDUIT, SIGNAL NO. 14 5C	FOOT	495		495
87301255	ELECTRIC CABLE IN CONDUIT, SIGNAL NO. 14 7C	FOOT	494		494
87301750	ELECTRIC CABLE IN CONDUIT, RAILROAD, NO. 14 3C	FOOT	1238		1238
87502690	TRAFFIC SIGNAL POST, ALUMINUM 15 FT.	EACH	2		2
87700140	STEEL MAST ARM ASSEMBLY AND POLE, 20 FT.	EACH	2		2
87800400	CONCRETE FOUNDATION, TYPE E 30-INCH DIAMETER	FOOT	20		20
87900200	DRILL EXISTING HANDHOLE	EACH	4		4
88040070	SIGNAL HEAD, POLYCARBONATE, LED, 1-FACE, 3-SECTION, BRACKET MOUNTED	EACH	2		2
88040090	SIGNAL HEAD, POLYCARBONATE, LED, 1-FACE, 3-SECTION, MAST ARM MOUNTED	EACH	1		1
88040120	SIGNAL HEAD, POLYCARBONATE, LED, 1-FACE, 4-SECTION, MAST ARM MOUNTED	EACH	2		2
88040250	SIGNAL HEAD, POLYCARBONATE, LED, 2-FACE, 1-3 SECTION, 1-4 SECTION, BRACKET MOUNTED	EACH	2		2
88102825	PEDESTRIAN SIGNAL HEAD, POLYCARBONATE, LED, 1-FACE, BRACKET MOUNTED WITH COUNT DOWN TIMER	EACH	4		4
88200510	TRAFFIC SIGNAL BACKPLATE, RETROREFLECTIVE	EACH	9		9

FILE NAME: c:\Users\Kevin\OneDrive\Documents\AECOM\Illinois\p15-hrst3-04-rr\Sht-500.dwg



USER NAME = kevin.oneill	DESIGNED - KMO	REVISED -
PLDT SCALE = 48.0000" / 1"	DRAWN - KMO	REVISED -
PLDT DATE = 11/23/2016	CHECKED - MJL	REVISED -
	DATE - 11/23/2016	REVISED -

**STATE OF ILLINOIS
DEPARTMENT OF TRANSPORTATION**

SUMMARY OF QUANTITIES		
SCALE: NONE	SHEET 2 OF 3 SHEETS	STA. TO STA.

F.A.U. RTE.	SECTION	COUNTY	TOTAL SHEETS	SHEET NO.
7975	15-HRST3-04-RR	SANGAMON	13	4
ILLINOIS FED. AID PROJECT				

CONTRACT NO. 93641

SUMMARY OF QUANTITIES

ITEM NO.	ITEM DESCRIPTION	UNIT	TOTAL QUANTITY	CONSTRUCTION CODE
				SIGNALS CARPENTER ST.
				100% HSR
				0021
89502215	MODIFY EXISTING CONTROLLER FOUNDATION	EACH	2	2
89502300	REMOVE ELECTRIC CABLE FROM CONDUIT	FOOT	563	563
89502375	REMOVE EXISTING TRAFFIC SIGNAL EQUIPMENT	EACH	2	2
89502385	REMOVE EXISTING CONCRETE FOUNDATION	EACH	2	2
X1400168	RAILROAD, FULL-ACTUATED CONTROLLER AND TYPE SUPER P CABINET (SPECIAL)	EACH	1	1
X1400169	RAILROAD, FULL-ACTUATED CONTROLLER AND TYPE SUPER R CABINET (SPECIAL)	EACH	1	1
X7010234	TRAFFIC CONTROL AND PROTECTION, STANDARD 701701, SPECIAL	LSUM	1	1
X8600105	MASTER CONTROLLER (SPECIAL)	EACH	1	1
X8620200	UNINTERRUPTABLE POWER SUPPLY, SPECIAL	EACH	2	2
X8950105	REMOVE EXISTING TRAFFIC CONTROLLER AND CABINET	EACH	2	2
Z0048665	RAILROAD PROTECTIVE LIABILITY INSURANCE	LSUM	1	1
X1400214	SPARE RAILROAD, FULL ACTUATED CONTROLLER, SPECIAL	EACH	2	2

* DENOTES SPECIALTY ITEM

FILE NAME : e:\projects\15500\15500.dwg



USER NAME = kevin.oneill
 PLOT SCALE = 48.0000' / 1" in.
 PLOT DATE = 11/23/2016

DESIGNED - KMO
 DRAWN - KMO
 CHECKED - MJL
 DATE - 11/23/2016

REVISED -
 REVISED -
 REVISED -
 REVISED -

**STATE OF ILLINOIS
 DEPARTMENT OF TRANSPORTATION**

SUMMARY OF QUANTITIES

SCALE: SHEET 3 OF 3 SHEETS STA. TO STA.

F.A.D. RTE.	SECTION	COUNTY	TOTAL SHEETS	SHEET NO.
7975	15-HRST3-04-RR	SANGAMON	13	5

CONTRACT NO. 93641
 ILLINOIS FED. AID PROJECT

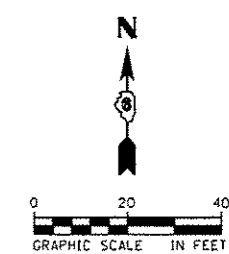
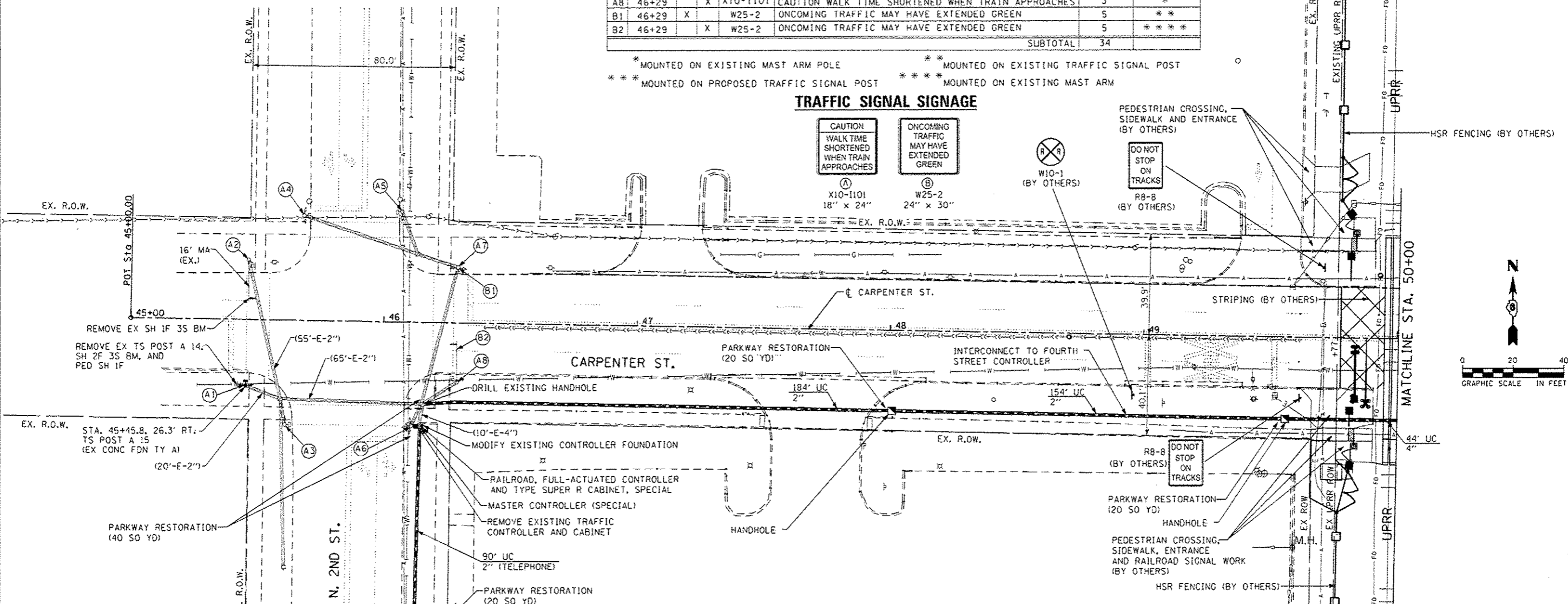
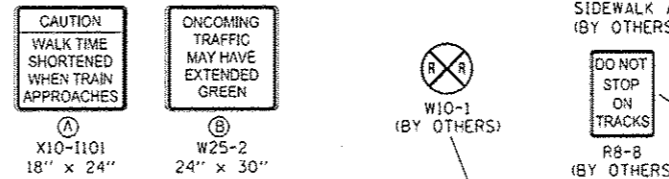
TRAFFIC SIGNAL GENERAL NOTES

1. THE CONTRACTOR SHALL VERIFY THE EXACT LOCATION OF ALL UNDERGROUND UTILITIES PRIOR TO BEGINNING CONSTRUCTION (J.U.L.I.E. 800/892-0123).
2. COORDINATE ALL WORK WITH THE RAILROAD FORCES.
3. THE CITY OF SPRINGFIELD DEPARTMENT OF PUBLIC WORKS (217-789-2260) SHALL BE NOTIFIED AT LEAST 72 HOURS PRIOR TO THE REPLACING OF AND TURNING ON OF THE UPGRADED CONTROLLER UNIT.
4. THE CONTRACTOR SHALL BE RESPONSIBLE FOR REPORTING THE ELECTRICAL LOADS FOR THE UNMETERED SERVICES ON THIS IMPROVEMENT TO THE UTILITY COMPANY AND AGENCY RESPONSIBLE FOR ENERGY CHARGES: CITY OF SPRINGFIELD, ILLINOIS.
5. THE CONTRACTOR IS RESPONSIBLE FOR THE COST OF UNCOVERING OR HAND DIGGING AROUND UTILITIES, AS NECESSARY; COST TO BE INCLUDED WITH THE "MODIFY EXISTING CONTROLLER FOUNDATION" PAY ITEM.
6. CONTRACTOR SHALL PROVIDE A SELF-ADHERED PHASE DIAGRAM ON THE INSIDE OF THE CONTROLLER CABINET DOOR.

STATION	OFFSET		SIGN NO	SIGN DESCRIPTION	72000100 SIGN PANEL T1 (50 FT)	ATTACHMENT
	LT	RT				
A1	45+46	X	X10-1101	CAUTION WALK TIME SHORTENED WHEN TRAIN APPROACHES	3	** *
A2	45+46	X	X10-1101	CAUTION WALK TIME SHORTENED WHEN TRAIN APPROACHES	3	**
A3	45+61	X	X10-1101	CAUTION WALK TIME SHORTENED WHEN TRAIN APPROACHES	3	** *
A4	45+68	X	X10-1101	CAUTION WALK TIME SHORTENED WHEN TRAIN APPROACHES	3	** *
A5	46+07	X	X10-1101	CAUTION WALK TIME SHORTENED WHEN TRAIN APPROACHES	3	** *
A6	46+11	X	X10-1101	CAUTION WALK TIME SHORTENED WHEN TRAIN APPROACHES	3	** *
A7	46+29	X	X10-1101	CAUTION WALK TIME SHORTENED WHEN TRAIN APPROACHES	3	** *
A8	46+29	X	X10-1101	CAUTION WALK TIME SHORTENED WHEN TRAIN APPROACHES	3	**
B1	46+29	X	W25-2	ONCOMING TRAFFIC MAY HAVE EXTENDED GREEN	5	** *
B2	46+29	X	W25-2	ONCOMING TRAFFIC MAY HAVE EXTENDED GREEN	5	** ** *
SUBTOTAL					34	

* MOUNTED ON EXISTING MAST ARM POLE ** MOUNTED ON EXISTING TRAFFIC SIGNAL POST
 ** * MOUNTED ON PROPOSED TRAFFIC SIGNAL POST ** * * MOUNTED ON EXISTING MAST ARM

TRAFFIC SIGNAL SIGNAGE



TRAFFIC SIGNAL LEGEND

- PROPOSED CONTROLLER
- EXISTING SERVICE INSTALLATION (POLE MOUNTED)
- PROPOSED SERVICE INSTALLATION (POLE MOUNTED)
- EXISTING SIGNAL HEAD
- PROPOSED SIGNAL HEAD WITH BACKPLATE
- EXISTING PEDESTRIAN SIGNAL HEAD
- PROPOSED PEDESTRIAN SIGNAL HEAD
- EXISTING TRAFFIC SIGNAL POST, PAINTED STEEL
- PROPOSED TRAFFIC SIGNAL POST, ALUMINUM
- EXISTING HANDHOLE
- PROPOSED HANDHOLE
- EXISTING UNDERGROUND CONDUIT
- PROPOSED UNDERGROUND CONDUIT, PVC
- RAILROAD CONTROL CABINET
- PROPOSED UNINTERRUPTIBLE POWER SUPPLY
- PROPOSED MASTER CONTROLLER
- PROPOSED TELEPHONE DROP

NOTES

ALL TRAFFIC SIGNAL CONTROLLER EQUIPMENT FOR THIS PROJECT SHALL BE "ECONOLITE" TO MATCH THE EXISTING CLOSED LOOP TRAFFIC SIGNAL SYSTEM EQUIPMENT.

PARKWAY RESTORATION SHALL BE PAID FOR AS: TOPSOIL, FURNISH AND PLACE, 4"; AND SODDING, NITROGEN, PHOSPHORUS, AND POTASSIUM FERTILIZER NUTRIENTS SHALL BE APPLIED IN ACCORDANCE WITH THE STANDARD SPECIFICATIONS AND SHALL BE CONSIDERED INCLUDED IN THE COST FOR SODDING.

STAGING OF TRAFFIC SIGNAL CONTROLLER REPLACEMENT AND CABINET MODIFICATIONS. THE EXISTING TRAFFIC SIGNAL CABINET FOUNDATION IS TO BE MODIFIED AS SHOWN WHILE THE EXISTING TRAFFIC SIGNAL CONTROLLER MAINTAINS ITS CURRENT OPERATION. ONCE THE FOUNDATION MODIFICATIONS ARE COMPLETE AND ALL NEW CONTROLLER AND CABINET MATERIALS ARE PRESENT, THE CONTROLLER AND CABINET (COMPLETE) ARE TO BE REMOVED AND THE NEW CONTROLLER AND CABINET ARE TO BE INSTALLED. THE CONTRACTOR IS RESPONSIBLE FOR PROVIDING TRAFFIC CONTROL AT THE INTERSECTION TO THE SATISFACTION OF THE ENGINEER DURING THE CHANGEOVER. REFER TO TRAFFIC CONTROL STANDARD 701701, SPECIAL.

THE FOLLOWING ITEMS SHALL BE REMOVED BY THE CONTRACTOR AND SHALL REMAIN THE PROPERTY OF THE AGENCY LISTED BELOW. THE CONTRACTOR SHALL SAFELY STORE AND ARRANGE FOR THE PICK UP OF ALL EQUIPMENT TO BE RETURNED TO THE LISTED AGENCY AS PER THE SPECIFICATIONS.

AGENCY: CITY OF SPRINGFIELD, ILLINOIS

- 2 EACH CONTROLLER AND CABINET (COMPLETE)
- 4 EACH TRAFFIC SIGNAL POSTS
- 4 EACH SIGNAL HEAD, 1-FACE, 3-SECTION
- 2 EACH SIGNAL HEAD, 2-FACE, 3-SECTION
- 4 EACH PEDESTRIAN SIGNAL HEAD, 1-FACE



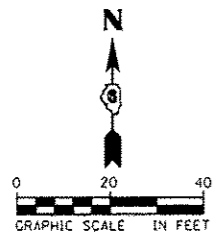
USER NAME: #USER#	DESIGNED - KMO	REVISED -
PLOT SCALE: #SCALE#	DRAWN - KMO	REVISED -
PLOT DATE: #DATE#	CHECKED - MJL	REVISED -
	DATE - 01/24/2017	REVISED -

STATE OF ILLINOIS
DEPARTMENT OF TRANSPORTATION

TRAFFIC SIGNAL PLAN CARPENTER ST. (FAU 7975)
(N. 2ND ST. - N. 4TH ST.)

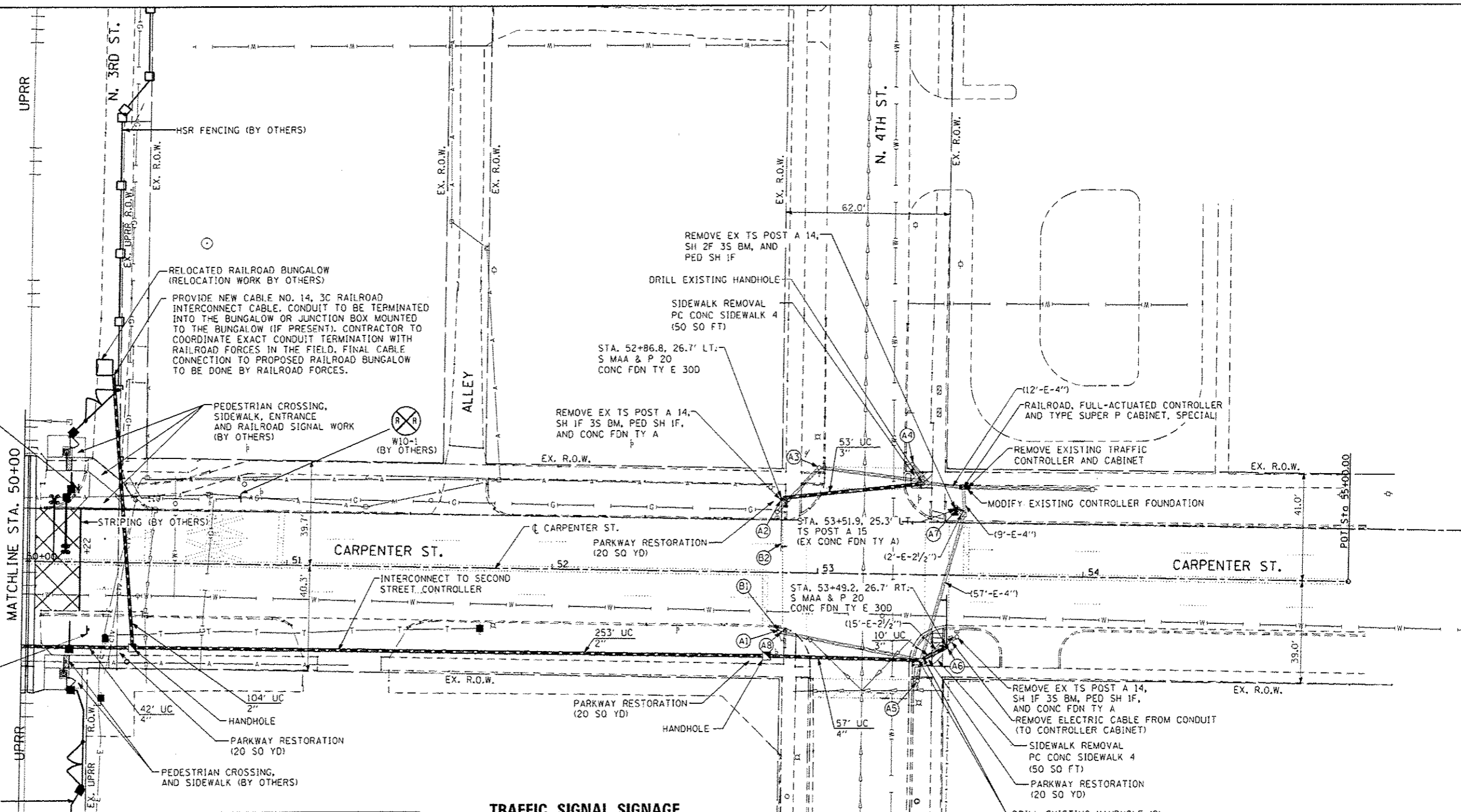
SCALE: 1"=20' SHEET 1 OF 2 SHEETS STA. TO STA.

F.A.U. RTE.	SECTION	COUNTY	TOTAL SHEETS	SHEET NO.
7975	15-HRST3-D4-RR	SANGAMON	13	6
			CONTRACT NO. 93641	
ILLINOIS FED. AID PROJECT				



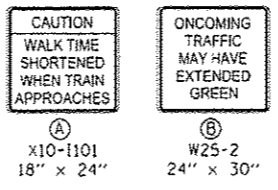
DO NOT STOP ON TRACKS
R8-8 (BY OTHERS)

DO NOT STOP ON TRACKS
R8-8 (BY OTHERS)



SIGNING SCHEDULE						
STATION	OFFSET		SIGN NO	SIGN DESCRIPTION	72000100 SIGN PANEL T1 (50 FT)	ATTACHMENT
	LT	RT				
A1	52+86	X	X10-1101	CAUTION WALK TIME SHORTENED WHEN TRAIN APPROACHES	3	**
A2	52+87	X	X10-1101	CAUTION WALK TIME SHORTENED WHEN TRAIN APPROACHES	3	****
A3	53+00	X	X10-1101	CAUTION WALK TIME SHORTENED WHEN TRAIN APPROACHES	3	**
A4	53+35	X	X10-1101	CAUTION WALK TIME SHORTENED WHEN TRAIN APPROACHES	3	**
A5	53+38	X	X10-1101	CAUTION WALK TIME SHORTENED WHEN TRAIN APPROACHES	3	**
A6	53+49	X	X10-1101	CAUTION WALK TIME SHORTENED WHEN TRAIN APPROACHES	3	****
A7	53+52	X	X10-1101	CAUTION WALK TIME SHORTENED WHEN TRAIN APPROACHES	3	****
A8	52+86	X	X10-1101	CAUTION WALK TIME SHORTENED WHEN TRAIN APPROACHES	3	**
B1	52+86	X	W25-2	ONCOMING TRAFFIC MAY HAVE EXTENDED GREEN	5	**
B2	52+87	X	W25-2	ONCOMING TRAFFIC MAY HAVE EXTENDED GREEN	5	****
SUBTOTAL					34	

TRAFFIC SIGNAL SIGNAGE



** MOUNTED ON EXISTING TRAFFIC SIGNAL POST
 *** MOUNTED ON PROPOSED TRAFFIC SIGNAL POST
 **** MOUNTED ON PROPOSED MAST ARM POLE
 ***** MOUNTED ON PROPOSED MAST ARM

NOTES

ALL TRAFFIC SIGNAL CONTROLLER EQUIPMENT FOR THIS PROJECT SHALL BE "ECONOLITE" TO MATCH THE EXISTING CLOSED LOOP TRAFFIC SIGNAL SYSTEM EQUIPMENT.

PARKWAY RESTORATION SHALL BE PAID FOR AS: TOPSOIL, FURNISH AND PLACE, 4"; AND SODDING. NITROGEN, PHOSPHORUS, AND POTASSIUM FERTILIZER NUTRIENTS SHALL BE APPLIED IN ACCORDANCE WITH THE STANDARD SPECIFICATIONS AND SHALL BE CONSIDERED INCLUDED IN THE COST FOR SODDING.

STAGING OF TRAFFIC SIGNAL CONTROLLER REPLACEMENT AND CABINET MODIFICATIONS. THE EXISTING TRAFFIC SIGNAL CABINET FOUNDATION IS TO BE MODIFIED AS SHOWN WHILE THE EXISTING TRAFFIC SIGNAL CONTROLLER MAINTAINS ITS CURRENT OPERATION. ONCE THE FOUNDATION MODIFICATIONS ARE COMPLETE AND ALL NEW CONTROLLER AND CABINET MATERIALS ARE PRESENT, THE CONTROLLER AND CABINET (COMPLETE) ARE TO BE REMOVED AND THE NEW CONTROLLER AND CABINET ARE TO BE INSTALLED. THE CONTRACTOR IS RESPONSIBLE FOR PROVIDING TRAFFIC CONTROL AT THE INTERSECTION TO THE SATISFACTION OF THE ENGINEER DURING THE CHANGEOVER. REFER TO TRAFFIC CONTROL STANDARD 701701, SPECIAL.



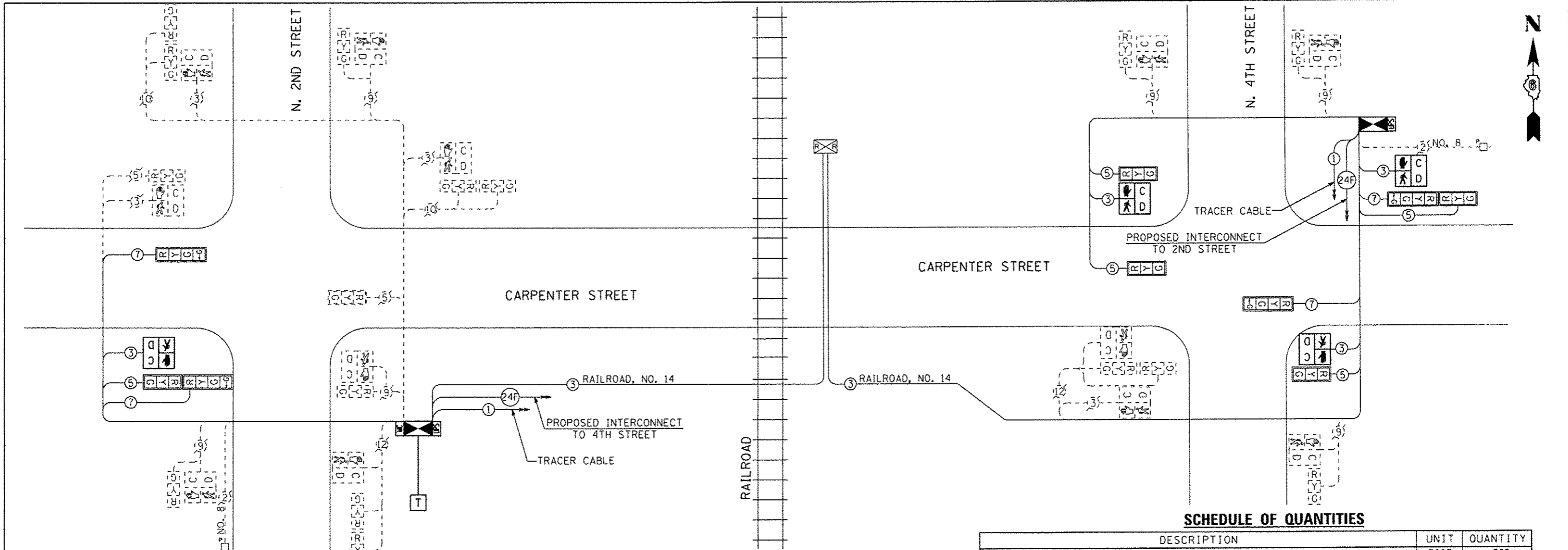
USER NAME = USER*	DESIGNED - KMO	REVISED -
PLOT SCALE = #SCALE*	DRAWN - KMO	REVISED -
PLOT DATE = #DATE*	CHECKED - MJL	REVISED -
	DATE - 01/24/2017	REVISED -

STATE OF ILLINOIS
DEPARTMENT OF TRANSPORTATION

TRAFFIC SIGNAL PLAN CARPENTER ST. (FAU 7975)
AT N. 2ND STREET AND AT N. 4TH STREET

SCALE: 1"=20' SHEET 2 OF 2 SHEETS STA. TO STA.

F.A.U. RTE.	SECTION	COUNTY	TOTAL SHEETS	SHEET NO.
7975	15-HRST3-04-RR	SANGAMON	13	7
ILLINOIS FED. AID PROJECT			CONTRACT NO. 93641	



CABLE DIAGRAM

CABLE DIAGRAM LEGEND

NOTE: ALL ITEMS ARE EXISTING TO REMAIN UNLESS OTHERWISE STATED.

- DENOTES NUMBER OF CONDUCTORS (EXISTING) ALL CABLE NO. 12 (UNLESS OTHERWISE NOTED)
- DENOTES NUMBER OF CONDUCTORS (PROPOSED) ALL CABLE NO. 14 EXCEPT AS INDICATED
- EXISTING SERVICE INSTALLATION, POLE MTD.
- UPGRADED CONTROLLER AND CABINET
- PROPOSED UNINTERRUPTIBLE POWER SUPPLY
- MASTER CONTROLLER, SPECIAL
- EXISTING RAILROAD CONTROL CABINET
- EXISTING PHONE MODEM
- PROPOSED TELEPHONE DROP
- SIGNAL SECTION, 12"
- PEDESTRIAN SIGNAL HEAD WITH COUNT DOWN TIMER
- TRAFFIC SIGNAL BACKPLATE, LOUVERED, FORMED PLASTIC
- PROPOSED SIGNAL SECTION, POLYCARBONATE, LED, 12"
- PROPOSED PEDESTRIAN SIGNAL HEAD WITH COUNT DOWN TIMER
- PROPOSED TRAFFIC SIGNAL BACKPLATE, RETROREFLECTIVE

- NOTE:**
- THE TRAFFIC SIGNAL CONTROLLER SHALL HAVE REMOTE MONITORING CAPABILITIES INCLUDING ALL NECESSARY PERIPHERAL HARDWARE SUCH AS A PHONE MODEM, INTERSECTION MONITOR, ETC. TO ALLOW FOR BOTH REMOTE DIAL-IN ACCESS AND AUTOMATIC CONTROLLER DIAL-OUT REPORTING OF ALARMS. THE COST OF THE NECESSARY ADDITIONAL HARDWARE SHALL BE INCLUDED IN THE UNIT PRICE FOR "RAILROAD, FULL-ACTUATED CONTROLLER AND TYPE SUPER P CABINET, SPECIAL" AT 4TH STREET AND "RAILROAD, FULL-ACTUATED CONTROLLER AND TYPE SUPER R CABINET, SPECIAL" AT 2ND STREET.
 - SEE TRAFFIC SIGNAL PLAN FOR NOTES REGARDING THE STAGING OF TRAFFIC SIGNAL CONTROLLER REPLACEMENT AND CABINET FOUNDATION MODIFICATIONS.

SCHEDULE OF QUANTITIES

DESCRIPTION	UNIT	QUANTITY
UNDERGROUND CONDUIT, PVC, 2" DIA.	FOOT	785
UNDERGROUND CONDUIT, PVC, 3" DIA.	FOOT	63
UNDERGROUND CONDUIT, PVC, 4" DIA.	FOOT	143
HANDHOLE	EACH	4
MAINTENANCE OF EXISTING TRAFFIC SIGNAL INSTALLATION	EACH	2
TRANSCEIVER - FIBER OPTIC	EACH	2
FIBER OPTIC CABLE IN CONDUIT, NO. 62.5/125, MM12F SM12F	FOOT	808
ELECTRIC CABLE IN CONDUIT, TRACER, NO. 14 1C	FOOT	808
ELECTRIC CABLE IN CONDUIT, SIGNAL NO. 14 3C	FOOT	376
ELECTRIC CABLE IN CONDUIT, SIGNAL NO. 14 5C	FOOT	495
ELECTRIC CABLE IN CONDUIT, SIGNAL NO. 14 7C	FOOT	494
ELECTRIC CABLE IN CONDUIT, RAILROAD, NO. 14 3C	FOOT	1238
TRAFFIC SIGNAL POST, ALUMINUM 15 FT.	EACH	2
STEEL MAST ARM ASSEMBLY AND POLE, 20 FT.	EACH	2
CONCRETE FOUNDATION, TYPE E 30-INCH DIAMETER	FOOT	20
DRILL EXISTING HANDHOLE	EACH	4
SIGNAL HEAD, POLYCARBONATE, LED, 1-FACE, 3-SECTION, BRACKET MOUNTED	EACH	2
SIGNAL HEAD, POLYCARBONATE, LED, 1-FACE, 3-SECTION, MAST ARM MOUNTED	EACH	1
SIGNAL HEAD, POLYCARBONATE, LED, 1-FACE, 4-SECTION, MAST ARM MOUNTED	EACH	2
SIGNAL HEAD, POLYCARBONATE, LED, 2-FACE, 1-3 SECTION, 1-4 SECTION, BRACKET MOUNTED	EACH	2
PEDESTRIAN SIGNAL HEAD, POLYCARBONATE, LED, 1-FACE, BRACKET MOUNTED WITH COUNT DOWN TIMER	EACH	4
TRAFFIC SIGNAL BACKPLATE, RETROREFLECTIVE	EACH	9
MODIFY EXISTING CONTROLLER FOUNDATION	EACH	2
REMOVE ELECTRIC CABLE FROM CONDUIT	FOOT	563
REMOVE EXISTING TRAFFIC SIGNAL EQUIPMENT	EACH	2
REMOVE EXISTING CONCRETE FOUNDATION	EACH	2
RAILROAD, FULL-ACTUATED CONTROLLER AND TYPE SUPER P CABINET (SPECIAL)	EACH	1
RAILROAD, FULL-ACTUATED CONTROLLER AND TYPE SUPER R CABINET (SPECIAL)	EACH	1
MASTER CONTROLLER (SPECIAL)	EACH	1
UNINTERRUPTIBLE POWER SUPPLY, SPECIAL	EACH	2
REMOVE EXISTING TRAFFIC CONTROLLER AND CABINET	EACH	2
SPARE RAILROAD, FULL ACTUATED CONTROLLER, SPECIAL	EACH	2

FILE NAME: F:\Projects\104\104-11\104-11-1\104-11-1-1\104-11-1-1-1\Cable Plan.dgn



USER NAME = kevin.oneill	DESIGNED - KMO	REVISED -
PLOT SCALE = 48.0000' / in.	DRAWN - KMO	REVISED -
PLOT DATE = 11/23/2016	CHECKED - MJL	REVISED -
	DATE - 11/23/2016	REVISED -

STATE OF ILLINOIS
DEPARTMENT OF TRANSPORTATION

TRAFFIC SIGNAL CABLE PLAN AND SCHEDULE OF QUANTITIES
CARPENTER STREET (N. 2ND ST. - N. 4TH ST.)
SCALE: NTS SHEET 1 OF 1 SHEETS STA. TO STA.

F.A.U. RTE. 7975	SECTION 15-HRST3-04-RR	COUNTY SANGAMON	TOTAL SHEETS 13	SHEET NO. 8
CONTRACT NO. 93641			ILLINOIS FED. AID PROJECT	

SEQUENCE OF OPERATION

CARPENTER STREET AT N. SECOND STREET

CARPENTER STREET AT N. FOURTH STREET

MOVEMENT	N		STREET				STREET				FLASH
	N. SECOND		STREET		STREET		STREET		STREET		
PHASE	2 + 6				4 + 8				FLASH		
INTERVAL	1	2	3A	3B	4	5	6A	6B			
CHANGE TO	/	/	4 + 8		/	/	2 + 6				
CARPENTER STREET MAST ARM AND FAR LEFT SIGNALS	W/B	G	G	Y	R	R	R	R	R		
CARPENTER STREET FAR RIGHT AND NEAR RIGHT SIGNALS	W/B	G	G	Y	R	R	R	R	R		
CARPENTER STREET ALL SIGNALS	E/B	G	G	Y	R	R	R	R	R		
NORTH SECOND STREET ALL SIGNALS	N/B	R	R	R	R	G	G	Y	R		
NORTH SECOND STREET ALL SIGNALS	S/B	R	R	R	R	G	G	Y	R		
PEDESTRIAN SIGNALS CROSSING N. SECOND STREET ON BOTH SIDES OF CARPENTER STREET	P	••FH	H	H	H	H	H	H	H		
PEDESTRIAN SIGNALS CROSSING CARPENTER STREET ON BOTH SIDES OF NORTH SECOND STREET	H	H	H	H	P	••FH	H	H	DARK		

MOVEMENT	N		STREET				STREET				FLASH
	N. FOURTH		STREET		STREET		STREET		STREET		
PHASE	2 + 6				4				FLASH		
INTERVAL	1	2	3A	3B	4	5	6A	6B			
CHANGE TO	/	/	4		/	/	2 + 6				
CARPENTER STREET ALL SIGNALS	W/B	G	G	Y	R	R	R	R	R		
CARPENTER STREET MAST ARM AND FAR LEFT SIGNALS	E/B	G	G	Y	R	R	R	R	R		
CARPENTER STREET FAR RIGHT AND NEAR RIGHT SIGNALS	E/B	G	G	Y	R	R	R	R	R		
NORTH FOURTH STREET ALL SIGNALS	N/B	R	R	R	R	G	G	Y	R		
PEDESTRIAN SIGNALS CROSSING N. FOURTH STREET ON BOTH SIDES OF CARPENTER STREET	P	••FH	H	H	H	H	H	H	DARK		
PEDESTRIAN SIGNALS CROSSING CARPENTER STREET ON BOTH SIDES OF NORTH FOURTH STREET	H	H	H	H	P	••FH	H	H	DARK		

PHASE 2 + 6 SHALL BE PLACED ON RECALL

- = TO APPEAR ONLY UPON PUSHBUTTON ACTUATION
- = FLASHING "DON'T WALK" IS TO TERMINATE AT THE COMPLETION OF THE PEDESTRIAN INTERVAL CLEARANCE.
- P = ILLUMINATED PERSON = WALK
- FH = ILLUMINATED FLASHING HAND = FLASHING DON'T WALK
- H = ILLUMINATED SOLID HAND = DON'T WALK

FILE NAME: e:\NeworKing\Kevin\one\11\enaper\1010\15591\294324-SHT-Sequence.dgn



USER NAME = kevin.oneill	DESIGNED - KMD	REVISED -
PLOT SCALE = 40,0000' / in.	DRAWN - KMD	REVISED -
PLOT DATE = 11/23/2016	CHECKED - MJL	REVISED -
	DATE - 11/23/2016	REVISED -

**STATE OF ILLINOIS
DEPARTMENT OF TRANSPORTATION**

TRAFFIC SIGNAL SEQUENCE OF OPERATION			
CARPENTER STREET (N. 2ND ST. AND N. 4TH ST.)			
SCALE: NTS	SHEET 1 OF 1 SHEETS	STA.	TO STA.

F.A.U. RTE.	SECTION	COUNTY	TOTAL SHEETS	SHEET NO.
7975	15-HRST3-04-RR	SANGAMON	13	9
CONTRACT NO. 93641				
ILLINOIS FED. AID PROJECT				

RAILROAD PREEMPTION SEQUENCE OF OPERATION

CARPENTER STREET AT N. SECOND STREET

CHANGE FROM NORMAL SEQUENCE OF OPERATION INTERVAL NUMBER	1				4				PREEMPTOR NUMBER 2	CLEAR TO NORMAL SEQUENCE
	1A	1B	1C	1D	2	3	4	5		
RAILROAD PREEMPTION SEQUENCE OF OPERATION INTERVAL NUMBER					2	3	4	5		
CHANGE TO RAILROAD PREEMPTION SEQUENCE OF OPERATION INTERVAL NUMBER	1B	2	1D	2	3	4	5			
CARPENTER STREET AT N. SECOND STREET W/B MAST ARM AND FAR LEFT SIGNALS	G	G	R	R	\leftarrow G	Y	R	R		△
CARPENTER STREET AT N. SECOND STREET W/B FAR RIGHT AND NEAR RIGHT SIGNALS	G	G	R	R	G	Y	R	R		△
CARPENTER STREET AT N. SECOND STREET E/B ALL SIGNALS	Y	R	R	R	R	R	R	R		△
NORTH SECOND STREET AT CARPENTER STREET N/B ALL SIGNALS	R	R	Y	R	R	R	R	G		△
NORTH SECOND STREET AT CARPENTER STREET S/B ALL SIGNALS	R	R	Y	R	R	R	R	G		△
PEDESTRIAN SIGNALS CROSSING N. SECOND STREET ON BOTH SIDES OF CARPENTER STREET	FH	H	H	H	H	H	H	H		△
PEDESTRIAN SIGNALS CROSSING CARPENTER STREET ON BOTH SIDES OF NORTH SECOND STREET	H	H	FH	H	H	H	H	H		△

HOLD

CARPENTER STREET AT N. FOURTH STREET

CHANGE FROM NORMAL SEQUENCE OF OPERATION INTERVAL NUMBER	1				4				PREEMPTOR NUMBER 2	CLEAR TO NORMAL SEQUENCE
	1A	1B	1C	1D	2	3	4	5		
RAILROAD PREEMPTION SEQUENCE OF OPERATION INTERVAL NUMBER					2	3	4	5		
CHANGE TO RAILROAD PREEMPTION SEQUENCE OF OPERATION INTERVAL NUMBER	1B	2	1D	2	3	4	5			
CARPENTER STREET AT N. FOURTH STREET W/B ALL SIGNALS	Y	R	R	R	R	R	R	R		△
CARPENTER STREET AT N. FOURTH STREET E/B MAST ARM AND FAR LEFT SIGNALS	G	G	R	R	\leftarrow G	Y	R	R		△
CARPENTER STREET AT N. FOURTH STREET E/B FAR RIGHT AND NEAR RIGHT SIGNALS	G	G	R	R	G	Y	R	R		△
NORTH FOURTH STREET AT CARPENTER STREET N/B ALL SIGNALS	R	R	Y	R	R	R	R	G		△
PEDESTRIAN SIGNALS CROSSING N. FOURTH STREET ON BOTH SIDES OF CARPENTER STREET	FH	H	H	H	H	H	H	H		△
PEDESTRIAN SIGNALS CROSSING CARPENTER STREET ON BOTH SIDES OF NORTH FOURTH STREET	H	H	FH	H	H	H	H	H		△

HOLD

P = ILLUMINATED PERSON = WALK
 FH = ILLUMINATED FLASHING HAND = FLASHING DON'T WALK
 H = ILLUMINATED SOLID HAND = DON'T WALK

△ = RAILROAD PREEMPTION SEQUENCE SHALL PROVIDE THE PROPER CLEARANCE INTERVAL TO RESUME THE NORMAL SEQUENCE OF OPERATION OR PROPER CLEARANCE INTERVAL TO DISPLAY AN EMERGENCY VEHICLE INTERVAL (IF APPLICABLE) AFTER RAILROAD INTERVAL 5 IS TERMINATED.

- NOTES**
- ONCE PREEMPTION HAS BEEN CALLED, THE TRACK CLEAR SIGNAL DISPLAY SHALL APPEAR IMMEDIATELY AFTER ALL NECESSARY VEHICULAR CLEARANCES HAVE BEEN PROVIDED.
 - RAILROAD PREEMPTION WILL TERMINATE ACTIVE PEDESTRIAN PHASES IMMEDIATELY. PEDESTRIAN CLEARANCES WILL BE ABBREVIATED.
 - THE RAILROAD PREEMPTION SEQUENCE OF OPERATION SHALL HAVE PRIORITY OVER ALL OTHER SEQUENCES OF OPERATION.

FILE NAME: e:\pwworking\kevin.o'neil\working\101599\743821-SHT-Sequence.dgn

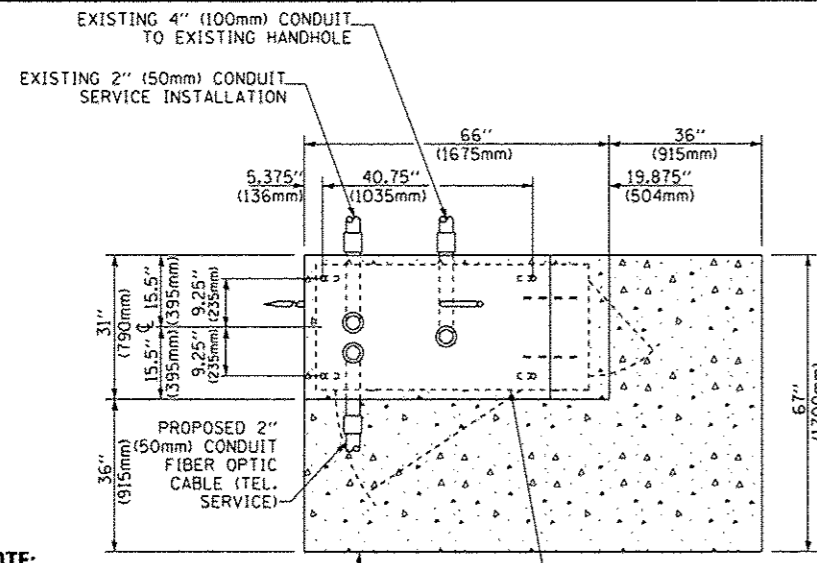


USER NAME - kevin.o'neil	DESIGNED - KMO	REVISED -	
PLOT SCALE - 40,0000 / in.	DRAWN - KMO	REVISED -	
PLOT DATE - 11/23/2016	CHECKED - MJL	REVISED -	
	DATE - 11/23/2016	REVISED -	

**STATE OF ILLINOIS
DEPARTMENT OF TRANSPORTATION**

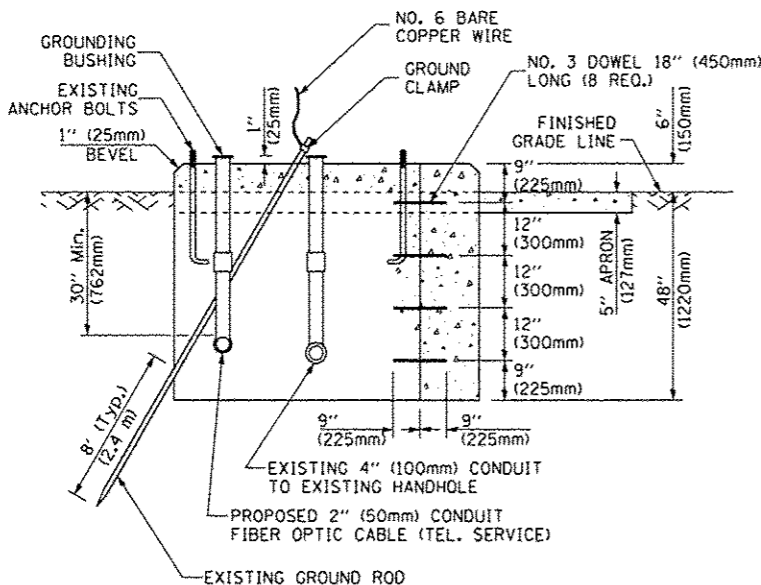
RAILROAD PREEMPTION SEQUENCE OF OPERATION		
CARPENTER STREET (N. 2ND ST. AND N. 4TH ST.)		
SCALE: NTS	SHEET 1 OF 1 SHEETS	STA. TO STA.

F.A.U. RTE.	SECTION	COUNTY	TOTAL SHEETS	SHEET NO.
7975	15-HRST3-04-RR	SANGAMON	13	10
				CONTRACT NO. 93641
ILLINOIS FED. AID PROJECT				



NOTE:
TOP OF FOUNDATION SHALL BE HIGHER THAN TOP OF ADJACENT GRADE

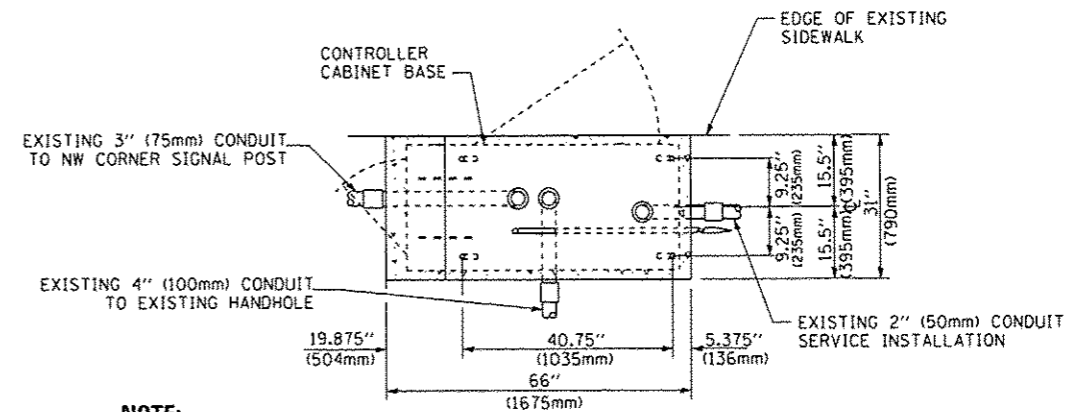
TOP VIEW



**MODIFY EXISTING TYPE "D" FOUNDATION TO TYPE "C"
FOUNDATION FOR GROUND MOUNTED SUPER R
CONTROLLER CABINET (AT SECOND ST.)**

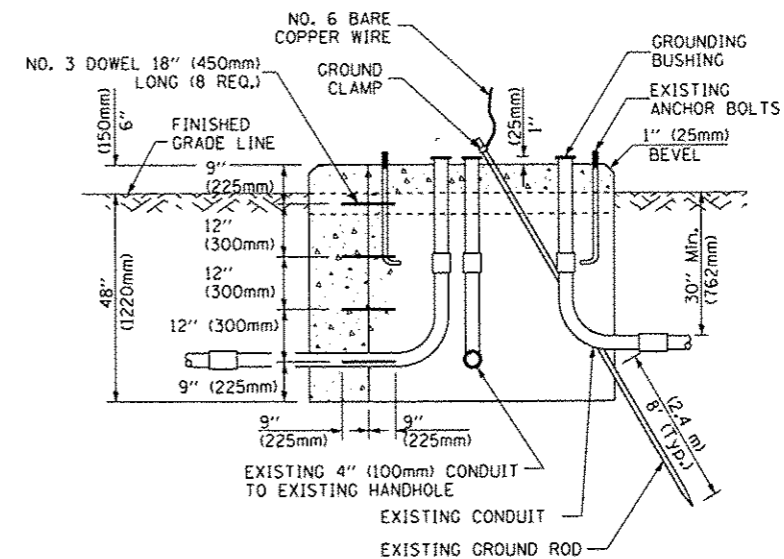
NOTES:

- FURNISH AND INSTALL A 20 AMP, 1 POLE, 120VAC, 10,000 A/C AT 120VAC CIRCUIT BREAKER FOR DUPLEX RECEPTACLES, AND A U.L. LISTED GROUNDED THREE-WIRE, 120VAC, 20 AMP GROUND FAULT INTERRUPTER TYPE DUPLEX RECEPTACLE (NEMA 5-20R) ALL LOCATED IN THE CONTROLLER CABINET.
- CONTROLLER SPECIFIED: FULL-ACTUATED CONTROLLER, STANDARD SEQUENCE II, 6 PHASE, IN TYPE "SUPER P" (AT 4TH ST.) OR IN TYPE "SUPER R" (AT 2ND ST.) CABINET.
- THE TRAFFIC SIGNAL CONTROLLER SHALL HAVE REMOTE MONITORING CAPABILITIES INCLUDING ALL NECESSARY PERIPHERAL HARDWARE SUCH AS INTERSECTION MONITOR, ETC. TO ALLOW FOR BOTH REMOTE ACCESS AND AUTOMATIC CONTROLLER REPORTING OF ALARMS. THE COST OF THE NECESSARY ADDITIONAL HARDWARE SHALL BE INCLUDED IN THE UNIT PRICE FOR "RAILROAD, FULL-ACTUATED CONTROLLER AND TYPE SUPER R CABINET, SPECIAL" FOR 2ND ST. AND "RAILROAD, FULL-ACTUATED CONTROLLER AND TYPE SUPER P CABINET, SPECIAL" FOR 4TH ST.
- CARE SHOULD BE TAKEN DURING MODIFICATION OF THE EXISTING FOUNDATION TO NOT DAMAGE THE EXISTING SERVICE CONDUIT AND SERVICE CABLE.
- STAGING OF TRAFFIC SIGNAL CONTROLLER REPLACEMENT AND CABINET MODIFICATIONS. THE EXISTING TRAFFIC SIGNAL CABINET FOUNDATION IS TO BE MODIFIED AS SHOWN WHILE THE EXISTING TRAFFIC SIGNAL CONTROLLER MAINTAINS ITS' CURRENT OPERATION. ONCE THE FOUNDATION MODIFICATIONS ARE COMPLETE AND ALL NEW CONTROLLER AND CABINET MATERIALS ARE PRESENT, THE CONTROLLER AND CABINET (COMPLETE) ARE TO BE REMOVED AND THE NEW CONTROLLER AND CABINET ARE TO BE INSTALLED. THE CONTRACTOR IS RESPONSIBLE FOR PROVIDING TRAFFIC CONTROL AT THE INTERSECTION TO THE SATISFACTION OF THE ENGINEER DURING THE CHANGEOVER. REFER TO TRAFFIC CONTROL STANDARD 70170, SPECIAL.



NOTE:
TOP OF FOUNDATION SHALL BE HIGHER THAN TOP OF EXISTING SIDEWALK

TOP VIEW



**MODIFY EXISTING TYPE "D" FOUNDATION TO TYPE "C"
FOUNDATION FOR GROUND MOUNTED SUPER P
CONTROLLER CABINET (AT FOURTH ST.)**

FILE NAME: c:\pwworking\kevin.oneill\transportation\adna18591\2143821-SHT-SignalDetail.dwg



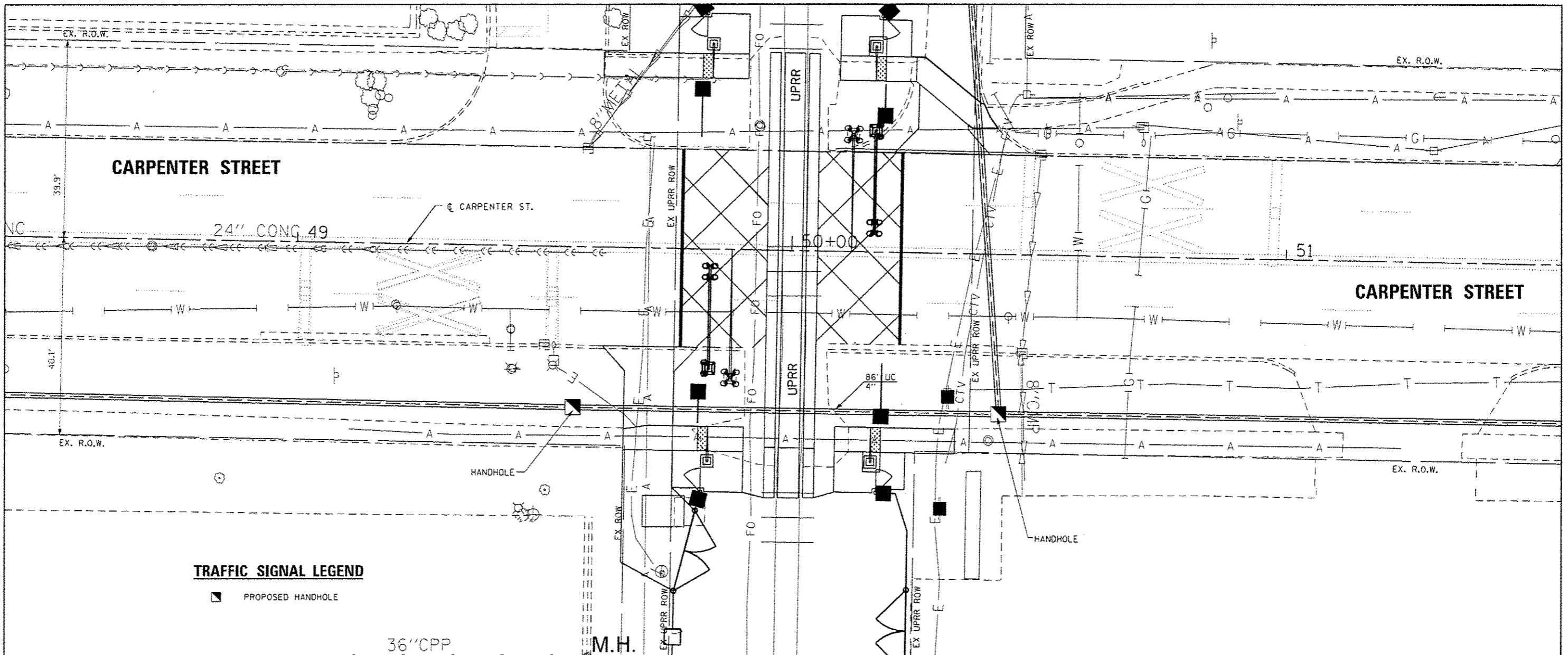
USER NAME: kevin.oneill	DESIGNED: KMO	REVISED:
PLOT SCALE: 48,0000' / 1"	DRAWN: KMO	REVISED:
PLOT DATE: 11/23/2016	CHECKED: MJL	REVISED:
	DATE: 11/23/2016	REVISED:

STATE OF ILLINOIS
DEPARTMENT OF TRANSPORTATION

TRAFFIC SIGNAL DETAILS
CARPENTER STREET (N. 2ND ST. - N. 4TH ST.)

SCALE: NTS SHEET 1 OF 1 SHEETS STA. TO STA.

F.A.U. RTE.	SECTION	COUNTY	TOTAL SHEETS	SHEET NO.
7975	15-HRST3-04-RR	SANGAMON	13	11
CONTRACT NO. 93641			ILLINOIS FED. AID PROJECT	

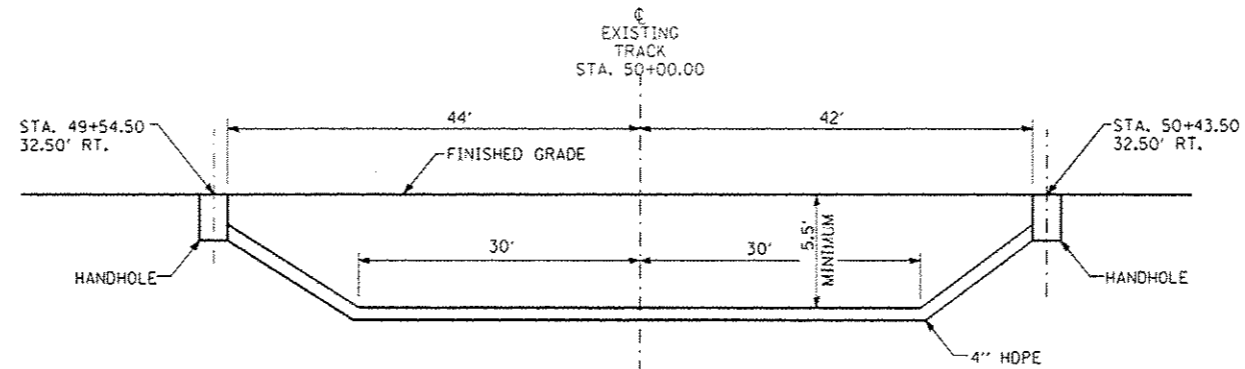


TRAFFIC SIGNAL LEGEND

■ PROPOSED HANDHOLE

36" CPP

M.H.

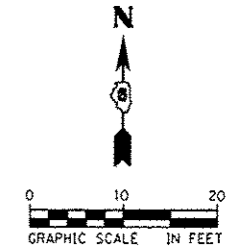


ELEVATION

N.T.S.

NOTES:

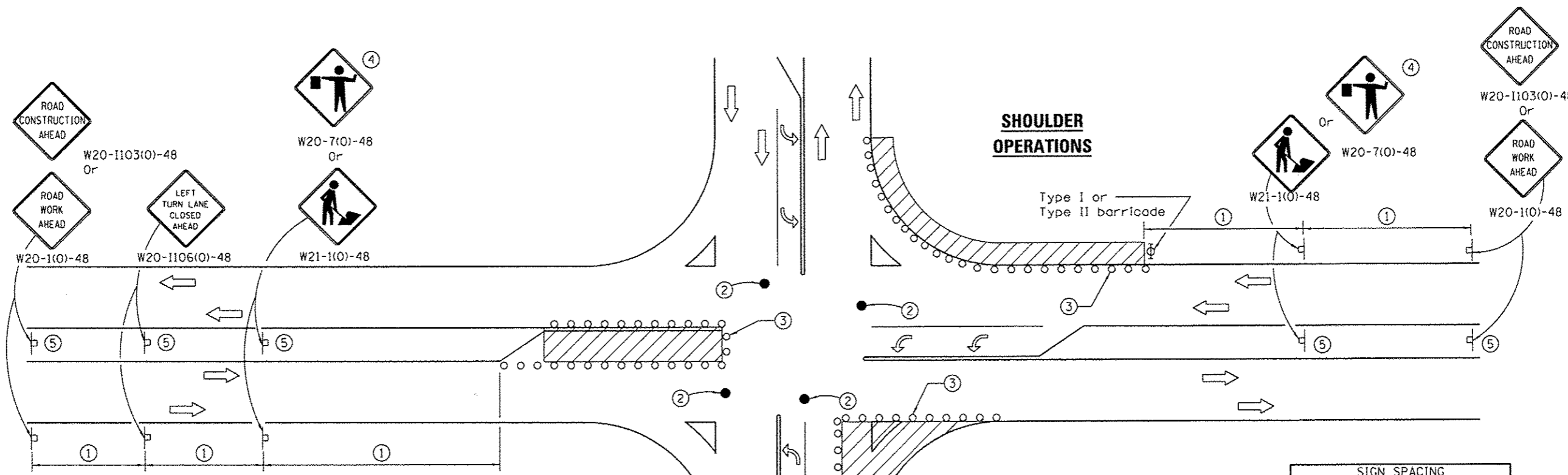
1. ALL HORIZONTAL DISTANCES TO BE MEASURED AT RIGHT ANGLES FROM THE CENTERLINE OF TRACK.
2. A RAILROAD SIGNAL REPRESENTATIVE MUST BE PRESENT DURING INSTALLATION UNLESS A UPRR SIGNAL REPRESENTATIVE AUTHORIZES OTHERWISE IN WRITING.



	USER NAME * #USER*	DESIGNED - KMO	REVISED -	STATE OF ILLINOIS DEPARTMENT OF TRANSPORTATION	CONDUIT INSTALLATION UNDER RAILROAD TRACKS DETAIL CARPENTER STREET (N. 2ND ST. - N. 4TH ST.)		F.A.U. RTE.	SECTION	COUNTY	TOTAL SHEETS	SHEET NO.
	PLOT SCALE * #SCALE*	DRAWN - KMO	REVISED -		7975	15-HRST3-04-RR	SANGAMON	13	12		
	PLOT DATE * #DATE*	CHECKED - M.J.L.	REVISED -		SCALE: 1"=10'		SHEET 1 OF 1 SHEETS	STA. TO STA.	CONTRACT NO. 93641		
	DATE - 01/24/2017	REVISOR -					ILLINOIS REG. AID PROJECT				

FILE NAME: 15-HRST3-04-RR-01.dwg

2017/01/24 11:23:50 AM



SIGN SPACING	
Posted Speed	Sign Spacing
55	500' (150 m)
50-45	350' (100 m)
<45	200' (60 m)

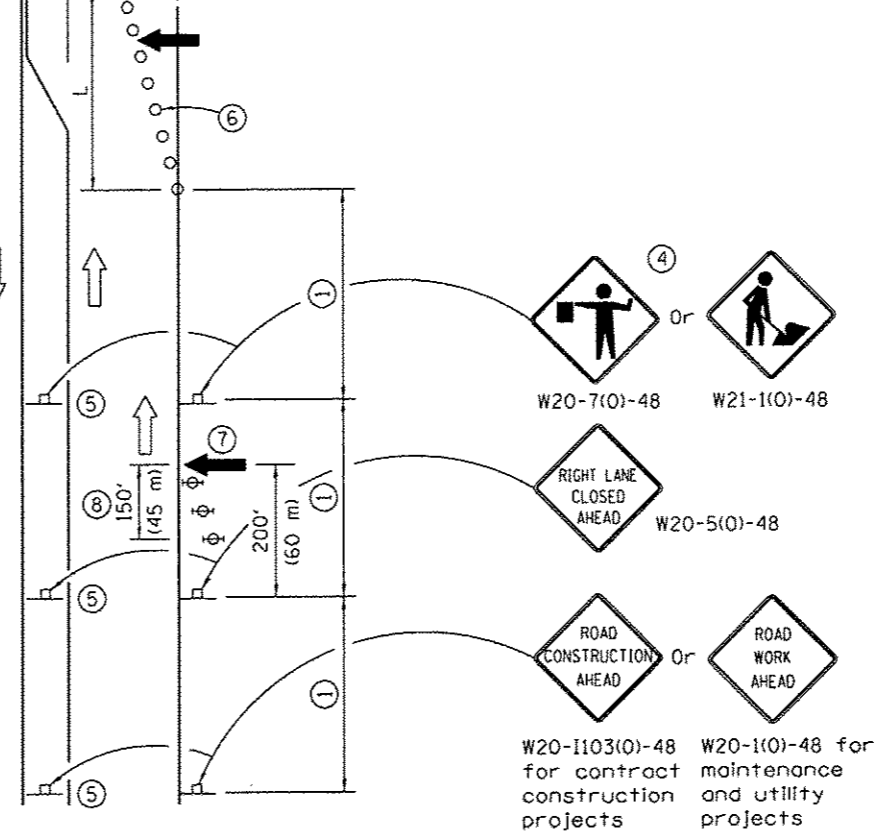
SYMBOLS

- Work area
- Cone, drum or barricade
- Sign on portable or permanent support
- Arrow board
- Barricade or drum with flashing light
- Flagger with traffic control sign

LEFT TURN LANE OR CENTER MEDIAN OPERATIONS

- ① Refer to SIGN SPACING TABLE for distance.
- ② Special - When signals are non-functional, flaggers on each leg of the intersection are required to maintain traffic until signals are operational.
- ③ Cones at 25' (8 m) centers for 250' (75 m). Additional cones may be placed at 50' (15 m) centers. When drums or Type I or Type II barricades are used, the interval between devices may be doubled.
- ④ Use flagger sign only when flagger is present.
- ⑤ Omit this sign when median is less than 10' (3 m) or for bi-directional turn lanes.
- ⑥ Cones, drums or barricades at 20' (6 m) centers in taper.
- ⑦ Advanced arrow board required for speeds > 45 mph.
- ⑧ Three Type II barricades, drums or vertical barricades at 50' (15 m) centers.

CORNER ISLAND OPERATIONS



GENERAL NOTES

This Standard is used where at any time, day or night, any vehicle, equipment, workers or their activities encroach on the pavement during shoulder operations or where construction requires lane closures in an urban area.

Calculate L as follows:

SPEED LIMIT	FORMULAS	
	English	(Metric)
40 mph (70 km/h) or less:	$L = \frac{WS^2}{60}$	$L = \frac{WS^2}{150}$
45 mph (80 km/h) or greater:	$L = (W)(S)$	$L = 0.65(W)(S)$

W = Width of offset in feet (meters).
 S = Normal posted speed mph (km/h).

All dimensions are in inches (millimeters) unless otherwise shown.

TRAFFIC CONTROL AND PROTECTION, STANDARD 701701, SPECIAL DETAIL



USER NAME : #USER#	DESIGNED - KMO	REVISED -
PLOT SCALE : #SCALE#	DRAWN - KMO	REVISED -
PLOT DATE : #DATE#	CHECKED - MJL	REVISED -
	DATE - 11/23/2016	REVISED -

STATE OF ILLINOIS
DEPARTMENT OF TRANSPORTATION

DETAIL	
TRAFFIC CONTROL AND PROTECTION, STANDARD 701701, SPECIAL	
SCALE: NTS	SHEET 1 OF 1 SHEETS
STA.	TO STA.

F.A.U. RTE.	SECTION	COUNTY	TOTAL SHEETS	SHEET NO.
7975	15-HR5T3-04-RR	SANGAMON	13	13
CONTRACT NO. 93641				
ILLINOIS FED. AID PROJECT				