

SUMMARY OF QUANTITIES					ROAD	SAFETY	LNSC	TRAINEES	CONSTRUCTION TYPE CODE				
S.I.	CODE NO.	PAY ITEM	UNIT	TOTAL QUANTITY	0004	0021	0031	0042					
	20100110	TREE REMOVAL (6 TO 15 UNITS DIAMETER)	UNIT	38				38					
	20101000	TEMPORARY FENCE	FOOT	700				700					
	20101100	TREE TRUNK PROTECTION	EACH	8				8					
*	20101200	TREE ROOT PRUNING	EACH	8				8					
*	20101300	TREE PRUNING (1 TO 10 INCH DIAMETER)	EACH	6				6					
*	20101350	TREE PRUNING (OVER 10 INCH DIAMETER)	EACH	2				2					
*	20101700	SUPPLEMENTAL WATERING	UNIT	5				5					
	20200100	EARTH EXCAVATION	CU YD	1342	1342								
	20201200	REMOVAL AND DISPOSAL OF UNSUITABLE MATERIAL	CU YD	100	100								
	20800150	TRENCH BACKFILL	CU YD	119	119								
	21101505	TOPSOIL EXCAVATION AND PLACEMENT	CU YD	142				142					
	21101615	TOPSOIL FURNISH AND PLACE, 4"	SQ YD	1075				1075					
	21301084	EXPLORATION TRENCH 84" DEPTH	FOOT	100	100								
*	25000210	SEEDING, CLASS 2A	ACRE	1				1					
*	25000400	NITROGEN FERTILIZER NUTRIENT	POUND	45				45					
*	25000500	PHOSPHORUS FERTILIZER NUTRIENT	POUND	45				45					
*	25000600	POTASSIUM FERTILIZER NUTRIENT	POUND	45				45					
	28000305	TEMPORARY DITCH CHECKS	FOOT	66				66					
	28000400	PERIMETER EROSION BARRIER	FOOT	595				595					
	28000500	INLET AND PIPE PROTECTION	EACH	4				4					
	28000510	INLET FILTERS	EACH	12				12					
	28001100	TEMPORARY EROSION CONTROL BLANKET	SQ YD	2328				2328					
	28100101	STONE RIPRAP, CLASS A1	SQ YD	43				43					
	28100107	STONE RIPRAP, CLASS A4	SQ YD	43				43					
	28200200	FILTER FABRIC	SQ YD	43				43					
	30300001	AGGREGATE SUBGRADE IMPROVEMENT	CU YD	100	100								
	30300112	AGGREGATE SUBGRADE IMPROVEMENT 12"	SQ YD	2524	2524								
	31101200	SUBBASE GRANULAR MATERIAL, TYPE B 4"	SQ YD	102	102								
	35101800	AGGREGATE BASE COURSE, TYPE B 6"	SQ YD	761	761								
	35501316	HOT-MIX ASPHALT BASE COURSE, 8"	SQ YD	215	215								
	40600275	BITUMINOUS MATERIALS (PRIME COAT)	POUND	5680	5680								
	40600290	BITUMINOUS MATERIALS (TACK COAT)	POUND	1430	1430								
	40600625	LEVELING BINDER (MACHINE METHOD), N50	TON	48	48								
	40600982	HOT-MIX ASPHALT SURFACE REMOVAL - BUTT JOINT	SQ YD	29	29								
	40603080	HOT-MIX ASPHALT BINDER COURSE, IL-19.0, N50	TON	611	611								
	40603335	HOT-MIX ASPHALT SURFACE COURSE, MIX "D", N50	TON	522	522								
	42000500	PORTLAND CEMENT CONCRETE PAVEMENT 10"	SQ YD	349	349								
	42400200	PORTLAND CEMENT CONCRETE SIDEWALK, 5 INCH	SQ FT	910	910								
	42400800	DETECTABLE WARNINGS	SQ FT	190				190					
	44000100	PAVEMENT REMOVAL	SQ YD	1800	1800								
	44000159	HOT-MIX ASPHALT SURFACE REMOVAL 2 1/2"	SQ YD	1215	1215								
	44000200	DRIVEWAY PAVEMENT REMOVAL	SQ YD	426	426								

\* - INDICATES SPECIALTY ITEMS

FILE NAME = 13375\_02-QUAN-01 - IDOT P01

USER NAME =  
 PLOT SCALE =  
 PLOT DATE = 05-19-16

DESIGNED -- EMA  
 CHECKED -- PKB  
 DRAWN -- RG  
 CHECKED -- AG

REVISED -- 08-26-16 IDOT  
 REVISED -- 2-14-2017  
 REVISED --  
 REVISED --

STATE OF ILLINOIS  
 DEPARTMENT OF TRANSPORTATION

US 30 (LINCOLN HIGHWAY) AT KOSTNER AVENUE  
 INTERSECTION IMPROVEMENTS  
 SUMMARY OF QUANTITIES

SCALE: NONE SHEET NO. 3 OF 63 SHEETS STA. TO STA.

F.A.P. RTE.	SECTION	COUNTY	TOTAL SHEETS	SHEET NO.
353	13-00063-00-CH	COOK	63	3
FED. ROAD DIST. NO. 1		ILLINOIS		FED. AID PROJECT M-4003(216)

CONTRACT NO. 61C11

SUMMARY OF QUANTITIES				ROAD	SAFETY	LNSC	TRAINEES	CONSTRUCTION TYPE CODE				
S.I.	CODE NO.	PAY ITEM	UNIT	TOTAL QUANTITY	004	021	031	042				
	44000300	CURB REMOVAL	FOOT	100	100							
	44000500	COMBINATION CURB AND GUTTER REMOVAL	FOOT	1132	1132							
	44000600	SIDEWALK REMOVAL	SQ FT	1187	1187							
	44003100	MEDIAN REMOVAL	SQ FT	3362	3362							
	44201713	CLASS D PATCHES, TYPE I, 6 INCH	SQ YD	10	10							
	44201717	CLASS D PATCHES, TYPE II, 6 INCH	SQ YD	10	10							
	54261318	CONCRETE END SECTION, STANDARD 542001, 18", 1:3	EACH	4	4							
	550A0050	STORM SEWERS, CLASS A, TYPE I 12"	FOOT	145	145							
	550A0070	STORM SEWERS, CLASS A, TYPE I 15"	FOOT	263	263							
	550A0090	STORM SEWERS, CLASS A, TYPE I 18"	FOOT	210	210							
	542A0223	PIPE CULVERTS, CLASS A, TYPE I 18"	FOOT	32	32							
	55100900	STORM SEWER REMOVAL 18"	FOOT	118	118							
*	56109210	WATER VALVES TO BE ADJUSTED	EACH	7	7							
*	56400100	FIRE HYDRANTS TO BE MOVED	EACH	1	1							
	60201105	CATCH BASINS, TYPE A, 4'-DIAMETER, TYPE II FRAME AND GRATE	EACH	6	6							
	60218400	MANHOLES, TYPE A, 4'-DIAMETER, TYPE I FRAME, CLOSED LID	EACH	3	3							
	60221100	MANHOLES, TYPE A, 5'-DIAMETER, TYPE I FRAME, CLOSED LID	EACH	1	1							
	60236800	INLETS, TYPE A, TYPE II FRAME AND GRATE	EACH	5	5							
	<del>60250200</del>	<del>CATCH BASINS TO BE ADJUSTED</del>	<del>EACH</del>	<del>4</del>	<del>4</del>							
	60255500	MANHOLES TO BE ADJUSTED	EACH	2	2							
	60265700	VALVE VAULTS TO BE ADJUSTED	EACH	1	1							
	60500050	REMOVING CATCH BASINS	EACH	2	2							
	60603800	COMBINATION CONCRETE CURB AND GUTTER, TYPE B-6.12	FOOT	1774	1774							
	60605000	COMBINATION CONCRETE CURB AND GUTTER, TYPE B-6.24	FOOT	150	150							
	60618740	CONCRETE MEDIAN, TYPE M-2.12	SQ FT	2874	2874							
*	66900200	NON-SPECIAL WASTE DISPOSAL	CU YD	320	320							
*	66900450	SPECIAL WASTE PLANS AND REPORTS	L SUM	1	1							
*	66900530	SOIL DISPOSAL ANALYSIS	EACH	1	1							
	67000400	ENGINEER'S FIELD OFFICE, TYPE A	CAL MO	6	6							
	67100100	MOBILIZATION	L SUM	1	1							
	70300100	SHORT TERM PAVEMENT MARKING	FOOT	732	732							
	70300210	TEMPORARY PAVEMENT MARKING LETTERS AND SYMBOLS	SQ FT	73	73							
	72000100	SIGN PANEL - TYPE I	SQ FT	46	46							
	72400100	REMOVE SIGN PANEL ASSEMBLY - TYPE A	EACH	8	8							
	72400500	RELOCATE SIGN PANEL ASSEMBLY - TYPE A	EACH	2	2							
	72900100	METAL POST - TYPE A	FOOT	73	73							
	72900200	METAL POST - TYPE B	FOOT	81	81							
*	78000100	THERMOPLASTIC PAVEMENT MARKING - LETTERS AND SYMBOLS	SQ FT	358	358							
*	78000200	THERMOPLASTIC PAVEMENT MARKING - LINE 4"	FOOT	1947	1947							
*	78000400	THERMOPLASTIC PAVEMENT MARKING - LINE 6"	FOOT	772	772							
*	78000600	THERMOPLASTIC PAVEMENT MARKING - LINE 12"	FOOT	970	970							

\* - INDICATES SPECIALTY ITEMS

FILE NAME = 13375\_02-QUAN-01 - IDOT P02

USER NAME =  
 PLOT SCALE =  
 PLOT DATE = 05-19-16

DESIGNED - EMA  
 CHECKED - PKB  
 DRAWN - RG  
 CHECKED - AG

REVISED -  $\Delta$  2-14-2017  
 REVISED -  
 REVISED -  
 REVISED -

STATE OF ILLINOIS  
 DEPARTMENT OF TRANSPORTATION

US 30 (LINCOLN HIGHWAY) AT KOSTNER AVENUE  
 INTERSECTION IMPROVEMENTS  
 SUMMARY OF QUANTITIES

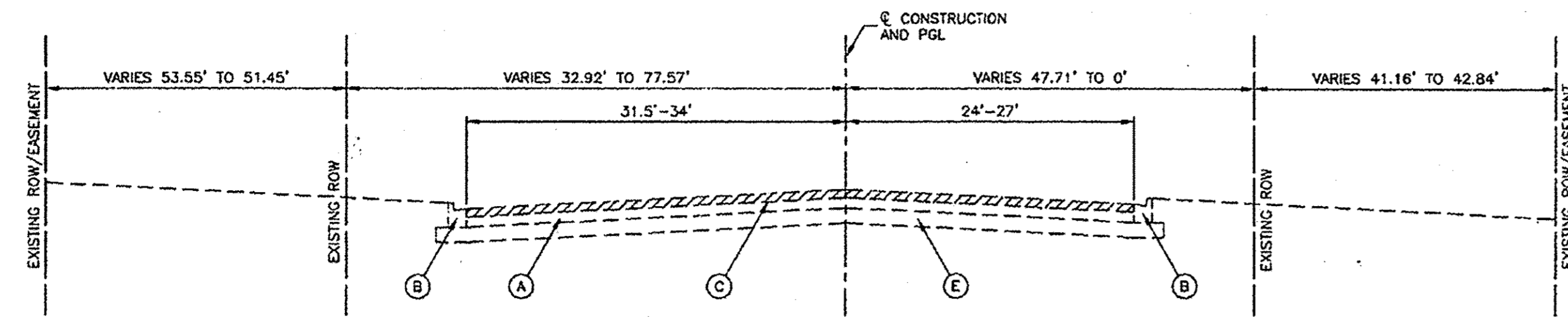
SCALE: NONE SHEET NO. 4 OF 63 SHEETS STA. TO STA.

F.A.P. RTE.	SECTION	COUNTY	TOTAL SHEETS	SHEET NO.
353	13-00063-00-CH	COOK	63	4
FED. ROAD DIST. NO. 1 ILLINOIS			FED. AID PROJECT M-4003(216)	

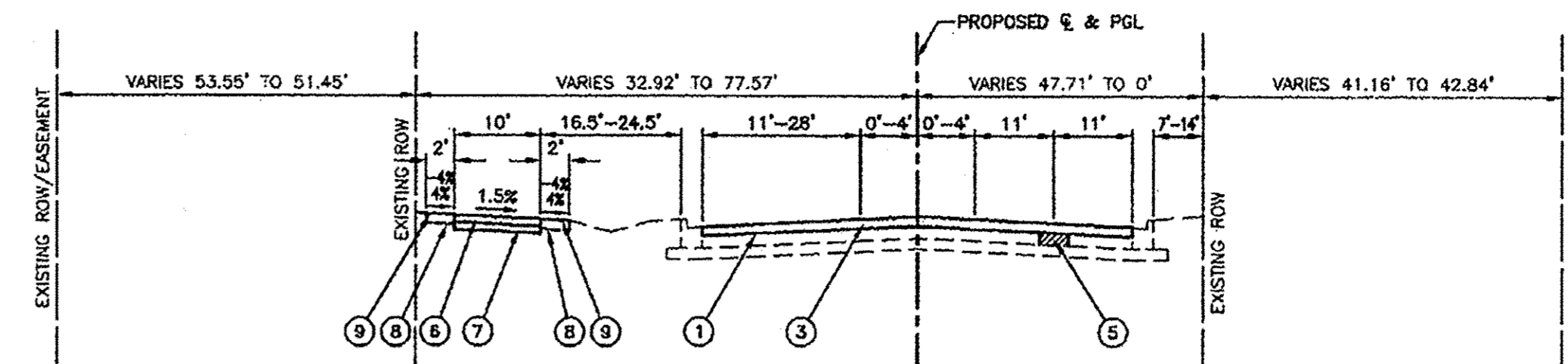
CONTRACT NO. 61C11

SUMMARY OF QUANTITIES					ROAD	SAFETY	LNSC	TRAINEES	CONSTRUCTION TYPE CODE				
S.I.	CODE NO.	PAY ITEM	UNIT	TOTAL QUANTITY	004	021	031	042					
*	88030100	SIGNAL HEAD, LED, 1-FACE, 5-SECTION, BRACKET MOUNTED	EACH	2		2							
*	88030110	SIGNAL HEAD, LED, 1-FACE, 5-SECTION, MAST-ARM MOUNTED	EACH	2		2							
*	88102717	PEDESTRIAN SIGNAL HEAD, LED, 1-FACE, BRACKET MOUNTED WITH COUNTDOWN TIMER	EACH	4		4							
*	88200410	TRAFFIC SIGNAL BACKPLATE, LOUVERED, FORMED PLASTIC	EACH	12		12							
*	88500100	INDUCTIVE LOOP DETECTOR	EACH	8		8							
*	88600100	DETECTOR LOOP, TYPE 1	FOOT	870		870							
*	88700200	LIGHT DETECTOR	EACH	2		2							
*	88700300	LIGHT DETECTOR AMPLIFIER	EACH	1		1							
*	88800100	PEDESTRIAN PUSH-BUTTON	EACH	4		4							
*	89000100	TEMPORARY TRAFFIC SIGNAL INSTALLATION	EACH	1		1							
*	89500100	RELOCATE EXISTING SIGNAL HEAD	EACH	8		8							
*	89500200	RELOCATE EXISTING PEDESTRIAN SIGNAL HEAD	EACH	2		2							
*	89500400	RELOCATE EXISTING PEDESTRIAN PUSH-BUTTON	EACH	2		2							
*	89502300	REMOVE ELECTRIC CABLE FROM CONDUIT	FOOT	6845		6845							
*	89502375	REMOVE EXISTING TRAFFIC SIGNAL EQUIPMENT	EACH	1		1							
*	89502380	REMOVE EXISTING HANDHOLE	EACH	7		7							
*	89502382	REMOVE EXISTING DOUBLE HANDHOLE	EACH	1		1							
*	89502385	REMOVE EXISTING CONCRETE FOUNDATION	EACH	7		7							
*	A2006532	TREE, QUERCUS BICOLOR (SWAMP WHITE OAK), 4" CALIPER, BAILED AND BURLAPPED	EACH	3			3						
*	X1400081	FULL-ACTUATED CONTROLLER AND TYPE SUPER P CABINET (SPECIAL)	EACH	1		1							
*	X0324085	EMERGENCY VEHICLE PRIORITY SYSTEM LINE SENSOR CABLE, NO. 20 3/C	FOOT	303		303							
*	X0324599	ROD AND CLEAN EXISTING CONDUIT	FOOT	100		100							
*	X0326899	SOLAR-POWERED FLASHING BEACON ASSEMBLY (COMPLETE)	EACH	2		2							
*	X0327698	LED INTERNALLY ILLUMINATED STREET NAME SIGN	EACH	4		4							
	X0327979	PAVEMENT MARKING REMOVAL - GRINDING	SQ FT										
	X6026050	SANITARY MANHOLES TO BE ADJUSTED	EACH	3		3							
*	X7010216	TRAFFIC CONTROL AND PROTECTION, (SPECIAL)	LSUM	1		1							
Δ	X7040650	REMOVE TEMPORARY CONCRETE BARRIER	FOOT	38		38							
*	X8360215	LIGHT POLE FOUNDATION, 24" DIAMETER, OFFSET	FOOT	8		8							
*	X8620200	UNINTERRUPTABLE POWER SUPPLY, SPECIAL	EACH	1		1							
*	X8710024	FIBER OPTIC CABLE IN CONDUIT, NO. 62.5/125, MM12F SM24F	FOOT	3506		3506							
Δ	Z0018911	DRILL AND GROUT #6 TIE BARS	EACH	350		350							
*	Z0033046	RE-OPTIMIZE TRAFFIC SIGNAL SYSTEM LEVEL 2	EACH	1		1							
Δ	Z0036608	STORM SEWER WATER MAIN REQUIREMENTS 12 INCH	FOOT	41		41							
*	Z0073510	TEMPORARY TRAFFIC SIGNAL TIMING	EACH	1		1							
	Z0076600	TRAINEES	HOUR	500				500					
	Z0076604	TRAINEES TRAINING PROGRAM GRADUATE	HOUR	500				500					
*	XX009144	LIGHT POLE, SPECIAL 20' FT. MH	EACH	6		6							
*	XX009145	LIGHT POLE, SPECIAL 30' FT. MH	EACH	4		4							

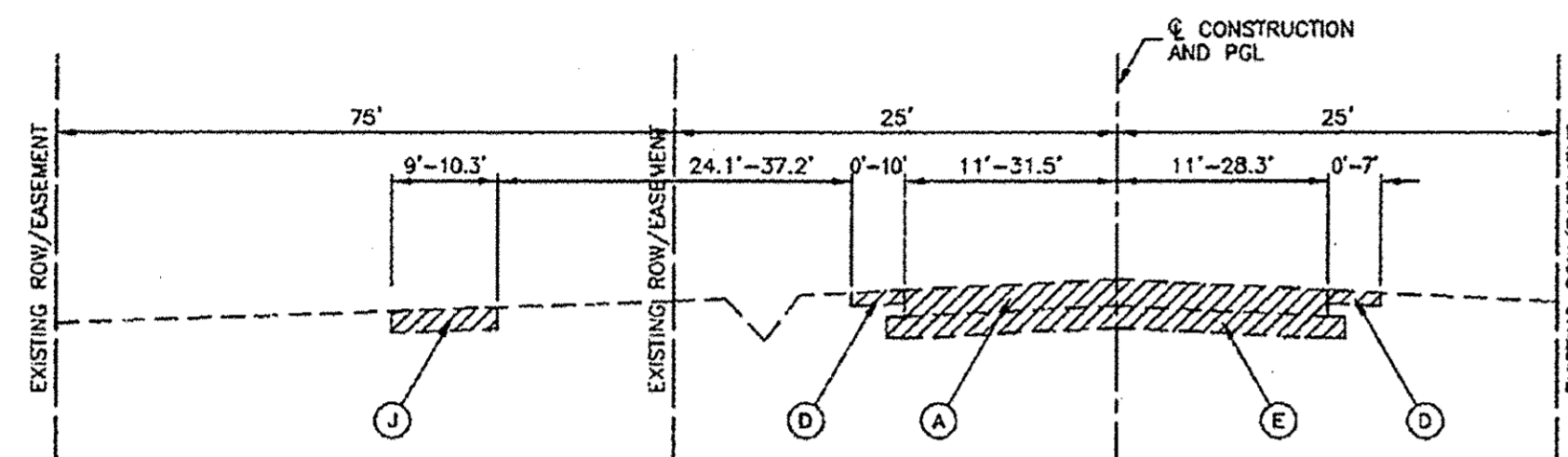
\* - INDICATES SPECIALTY ITEMS



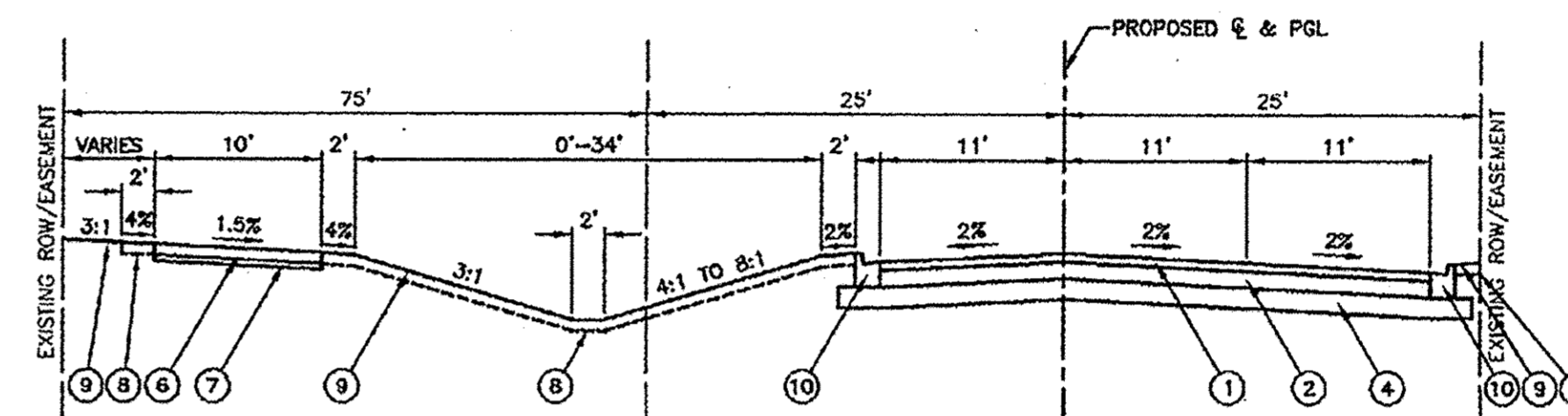
**EXISTING TYPICAL SECTION**  
KOSTNER AVENUE  
STA 56+38 TO STA 57+84.19



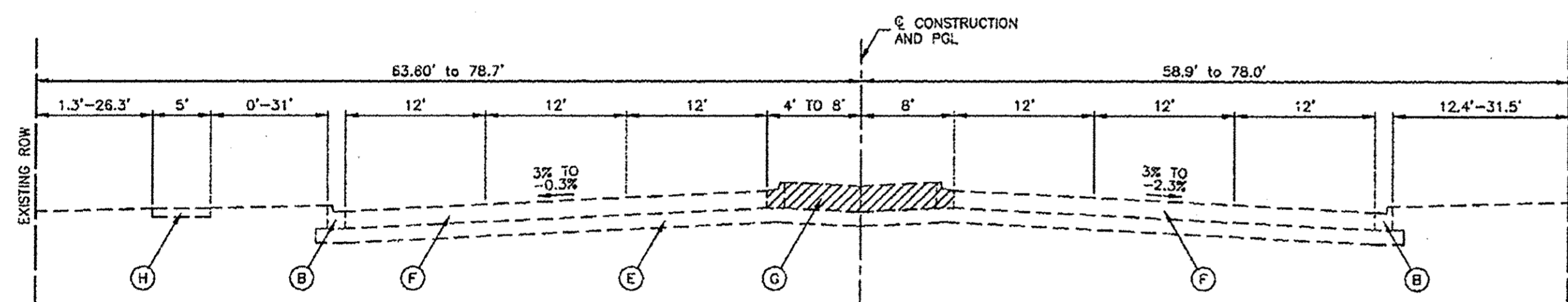
**PROPOSED TYPICAL SECTION**  
KOSTNER AVENUE  
STA 56+38 TO STA 57+84.19



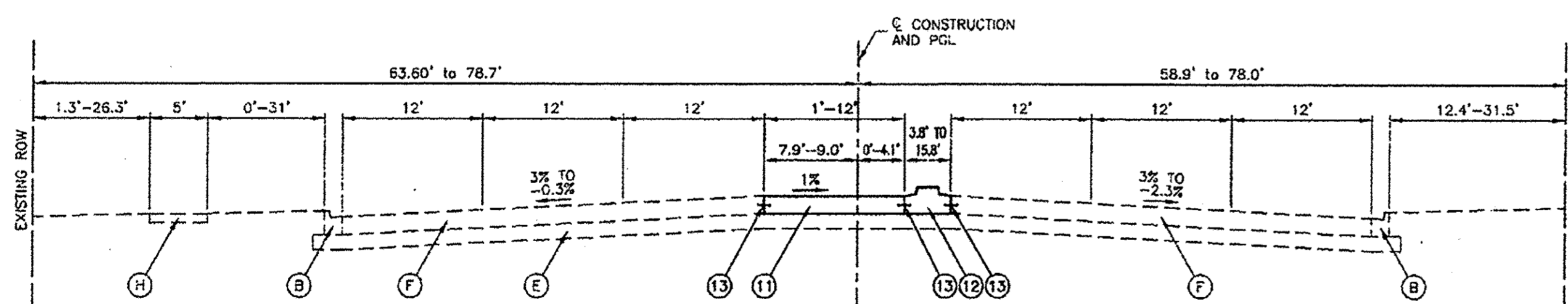
**EXISTING TYPICAL SECTION**  
KOSTNER AVENUE  
STA 57+84.19 TO STA 62+71.38



**PROPOSED TYPICAL SECTION**  
KOSTNER AVENUE  
STA 57+84.19 TO STA 62+71.38



**EXISTING TYPICAL SECTION**  
LINCOLN HIGHWAY  
STA 17+85.30 TO STA 21+35



**PROPOSED TYPICAL SECTION**  
LINCOLN HIGHWAY  
STA 17+85.30 TO STA 21+35

\* TRANSVERSE CONTRACTION JOINTS SHALL BE CONSTRUCTED USING 1/2" DIA DOWEL BARS, 18" LONG AT 12" C-C SPACING ACCORDING TO HIGHWAY STANDARD 42001 AND SPACED TO ALIGN WITH THE JOINTS IN EXISTING PAVEMENT.

HOT-MIX ASPHALT MIXTURE REQUIREMENTS	
MIXTURE TYPE	AIR VOIDS @ Ndes
<b>PAVEMENT RESURFACING</b>	
HOT-MIX ASPHALT SURFACE COURSE, MIX "D", N50, 2" (IL-9.5mm)	4% @ 50Gyr.
LEVELING BINDER (MACHINE METHOD), N50, 3/4"	4% @ 50 Gyr.
<b>FULL DEPTH PAVEMENT</b>	
HOT-MIX ASPHALT SURFACE COURSE, MIX "D", N50, 2" (IL-9.5mm)	4% @ 50Gyr.
HOT-MIX ASPHALT BINDER COURSE, IL-19.0, N50, 5"	4% @ 50 Gyr.
<b>PATCHING</b>	
CLASS D PATCHES, TYPE I, II (HMA BINDER IL-19.0mm); 6" (IN 2 LIFTS)	4% @ 70 Gyr.
<b>DRIVEWAYS</b>	
HOT-MIX ASPHALT SURFACE COURSE, MIX "D", N50, 2" (IL-9.5mm)	4% @ 50Gyr.
HOT-MIX ASPHALT BASE COURSE (HMA BINDER IL-19.0mm); FE -6", CE - 8"	4% @ 50 Gyr.

THE UNIT WEIGHT USED TO CALCULATE ALL HMA SURFACE MIXTURE QUANTITIES IS 112 LBS/SYIN. THE "AC TYPE" FOR POLYMERIZED HMA MIXES SHALL BE "SBS/SBR PG 76-22" AND FOR NON-POLYMERIZED HMA THE "AC TYPE" SHALL BE "PG 64-22" UNLESS MODIFIED BY DISTRICT ONE SPECIAL PROVISIONS. FOR HMA FULL DEPTH "AC TYPE" SEE SPECIAL PROVISIONS. FOR USE OF RECYCLED MATERIALS SEE DISTRICT ONE SPECIAL PROVISIONS.

\*NOTE: CLASS D PATCHES, TYPE I & II SHALL BE CONSTRUCTED AS DIRECTED BY THE ENGINEER

EARTHWORK QUANTITIES	
TOTAL CUT =	1709 CY
TOTAL EXISTING PAVEMENT REMOVAL =	225 CY
TOTAL TOPSOIL EXCAVATION AND PLACEMENT =	142 CY
TOTAL AVAILABLE CUT TO FILL (EARTH EXCAVATION) =	1342 CY
TOTAL FILL =	105 CY
CUT TO FILL (15% SHRINKAGE)	121 CY

**LEGEND**

- (A) EXISTING HMA PAVEMENT, 8.5"
- (B) EXISTING CONCRETE CURB AND GUTTER
- (C) EXISTING HMA SURFACE REMOVAL, 2-1/2"
- (D) EXISTING AGGREGATE SHOULDER
- (E) EXISTING SUBGRADE
- (F) EXISTING PCC PAVEMENT, 12" 10"
- (G) EXISTING HMA MEDIAN
- (H) EXISTING PCC SIDEWALK
- (J) EXISTING HMA PATH
- (1) HMA SURFACE COURSE, MIX "D", N50, 2"
- (2) HMA BINDER COURSE, IL-19.0, N50, 5"
- (3) LEVELING BINDER (MACHINE METHOD), N50, 3/4"
- (4) AGGREGATE SUBGRADE IMPROVEMENT, 12"
- (5) CLASS D PATH, 6" (AS DIRECTED BY THE RESIDENT ENGINEER)
- (6) HMA SURFACE COURSE, MIX "D", N50, 3"
- (7) AGGREGATE BASE COURSE, TYPE B, 6"
- (8) TOPSOIL, FURNISH AND PLACE, 4"
- (9) SEEDING, CLASS 1A
- (10) TYPE B-8.12 COMBINATION CONCRETE CURB AND GUTTER
- (11) PCC PAVEMENT, 12" 10"
- (12) PCC MEDIAN TYPE M-2.12
- (13) NO. 6 (NO. 19) TIE BARS - 24" LONG AT 24" C-C SPACING
- (Z) ITEM TO BE REMOVED

FILE NAME = 13376\_02-TYPX-01 - IDOT.P01

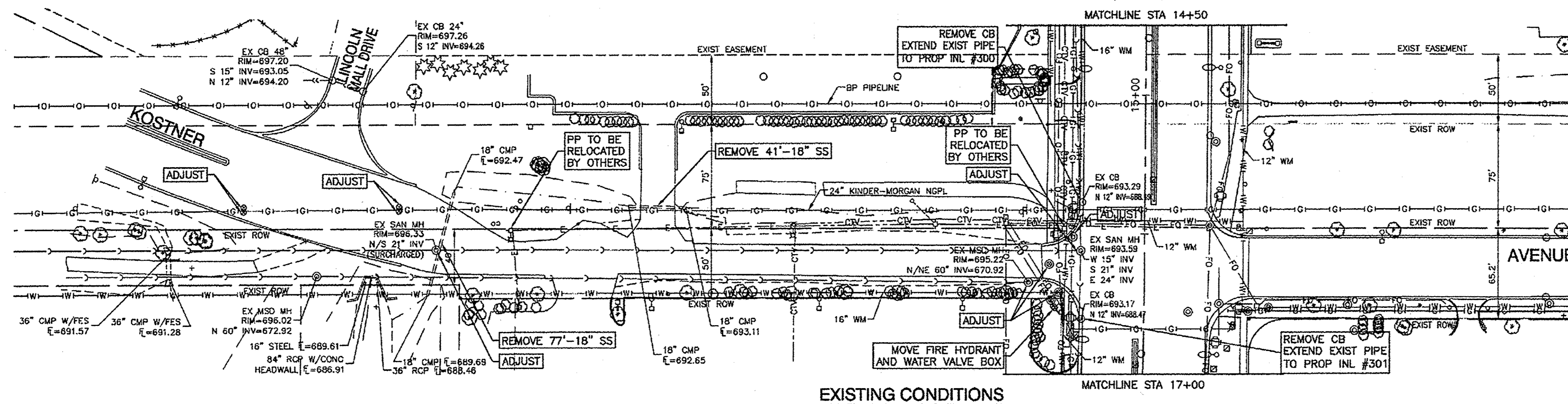
USER NAME =	DESIGNED -- EMA	REVISED -- Δ 2-14-2017
	CHECKED -- PKB	REVISED --
PLOT SCALE =	DRAWN -- RG	REVISED --
PLOT DATE = 05-19-16	CHECKED -- AG	REVISED --

STATE OF ILLINOIS  
DEPARTMENT OF TRANSPORTATION

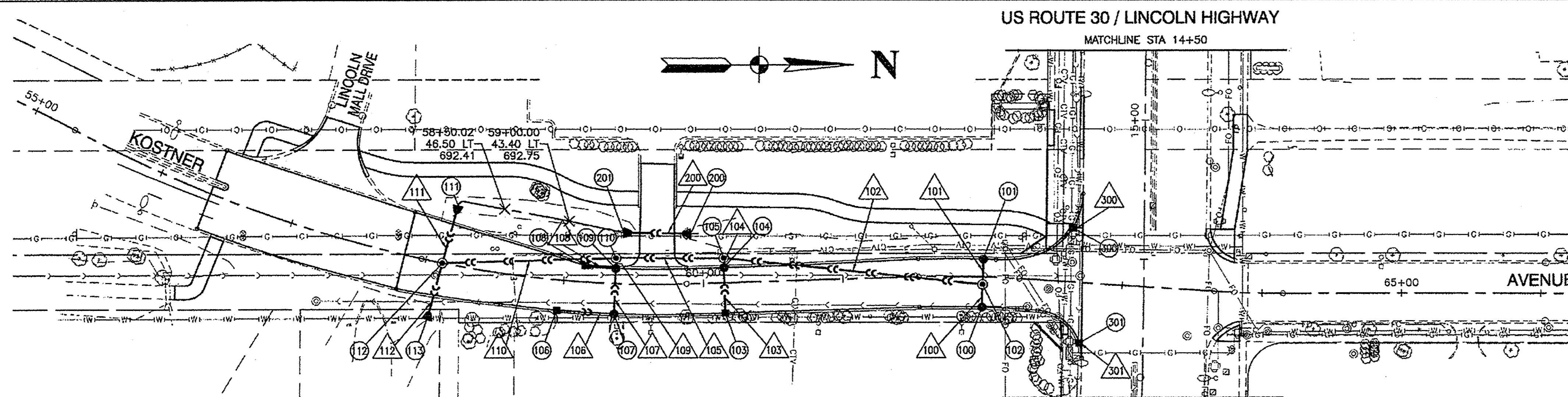
US 30 (LINCOLN HIGHWAY) AT KOSTNER AVENUE  
INTERSECTION IMPROVEMENTS  
TYPICAL SECTIONS

SCALE: SHEET NO. 7 OF 83 SHEETS STA. TO STA.

F.A.P. RTE.	SECTION	COUNTY	TOTAL SHEETS	SHEET NO.
353	13-00063-00-CH	COOK	83	7
CONTRACT NO. 61C11				
FED. ROAD DIST. NO. 1 ILLINOIS FED. AID PROJECT M-4003(216)				

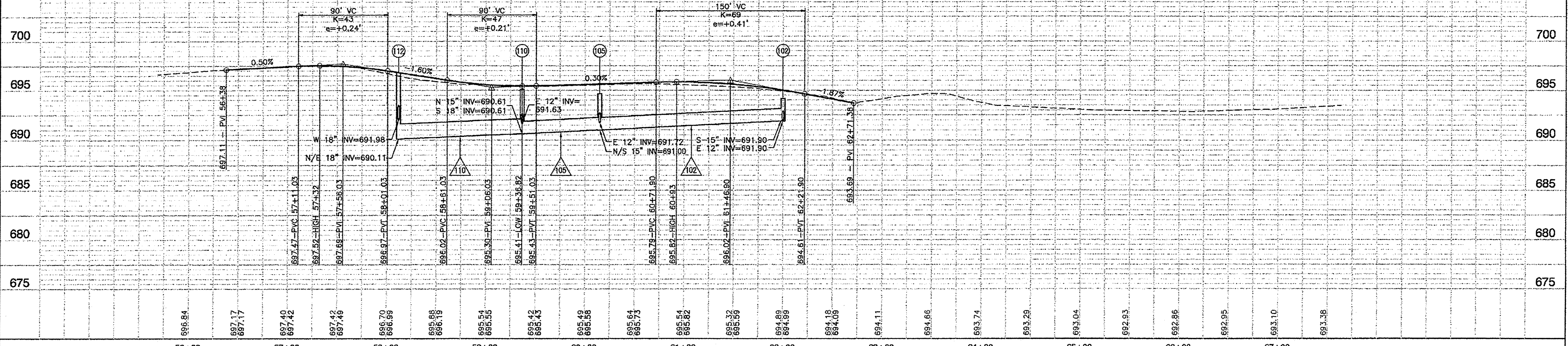


EXISTING CONDITIONS



PROPOSED IMPROVEMENTS

<p>100 STA 62+00, 22' RT CB TA, 4' DIA, T11 F&amp;G RIM EL=694.55 W 12" INV=692.00</p>	<p>108 STA 59+16.82, 11.58' LT INLET TA, T11 F&amp;G RIM EL=695.21 N 12" INV=692.04</p>	<p>300 STA 62+61.76, 39.56' LT INLET TA, T11 F&amp;G RIM EL=693.30 N 12" INV=688.43</p>
<p>101 STA 62+00, 13' LT CB TA, 4' DIA, T11 F&amp;G RIM EL=694.73 E 12" INV=692.00</p>	<p>109 STA 59+36.82, 11' LT CB TA, 4' DIA, T11 F&amp;G RIM EL=695.19 S 12" INV=691.94 E 12" INV=691.67 W 12" INV=691.67</p>	<p>301 STA 62+72.18, 43.79' RT INLET TA, T11 F&amp;G RIM EL=693.17 N 12" INV=688.47</p>
<p>102 STA 62+00, 5.5' RT MH TA, 4' DIA, T1F CL RIM EL=694.85 E 12" INV=691.90 W 12" INV=691.90 S 15" INV=691.90</p>	<p>110 STA 59+36.82, 18.5' LT MH TA, 4' DIA, T1F CL RIM EL=695.05 E 12" INV=691.63 N 15" INV=690.61 S 18" INV=690.61</p>	<p>100' 17'-12" RCP SSS1 @ 0.50% (0.8)</p>
<p>103 STA 60+15, 22' RT INLET TA, T11 F&amp;G RIM EL=695.18 W 12" INV=692.01</p>	<p>111 STA 58+14.61, 43.02' LT 18" END SECTION W 18" INV=692.41</p>	<p>101' 19'-12" RCP SSS1 @ 0.50% (1.1)</p>
		<p>102' 186'-15" RCP SSS1 @ 0.50% (21.4)</p>
		<p>103' 33'-12" RCP SSS1 @ 0.50% (3.6)</p>
		<p>104' 7'-12" RCP SSS1 @ 0.50% (1.9)</p>
		<p>105' 77'-15" RCP SSS1 @ 0.50% (9.3)</p>
		<p>106' 41'-12" STORM FIELDS (LATER TO BE RELOCATED) 41'-12" RCP SSS1 @ 0.50% (3.0)</p>
<p>104 STA 60+15, 11' LT CB TA, 4' DIA, T11 F&amp;G RIM EL=695.40 E 12" INV=691.86 W 12" INV=691.76</p>	<p>112 STA 58+12, 0' RT MH TA, 5' DIA, T1F CL RIM EL=696.80 W 18" INV=691.98 N 18" INV=690.11 E 18" INV=690.11</p>	<p>107' 33'-12" RCP SSS1 @ 0.50% (3.5)</p>
<p>105 STA 60+15, 18' LT MH TA, 4' DIA, T1F CL RIM EL=694.64 E 12" INV=691.72 N 15" INV=691.00 S 15" INV=691.00</p>	<p>113 STA 58+09.64, 42.34' RT 18" END SECTION E 18" INV=689.69</p>	<p>108' 20'-12" RCP SSS1 @ 0.50% (1.9)</p>
<p>106 STA 58+97, 22' RT INLET TA, T11 F&amp;G RIM EL=695.14 N 12" INV=692.14</p>	<p>200 STA 59+91.77, 36.69' LT 18" END SECTION N 18" INV=693.10</p>	<p>109' 8'-12" RCP SSS1 @ 0.50% (2.3)</p>
<p>107 STA 59+36.82, 22' RT CB TA, 4' DIA, T11 F&amp;G RIM EL=694.97 S 12" INV=691.93 W 12" INV=691.83</p>	<p>201 STA 59+41.84, 37.36' LT 18" END SECTION S 18" INV=692.91</p>	<p>110' 125'-18" RCP SSS1 @ 0.40% (35.7)</p>
		<p>111' 43'-18" RCP SSS1 @ 1.00% (6.4)</p>
		<p>112' 42'-18" RCP SSS1 @ 1.00% (20.4)</p>
		<p>200' 32'-18" PIPE CULVERT T1 @ 1.00% (5.6)</p>
		<p>300' 6'-12" RCP SSS1 @ 1.00% (1.6)</p>
		<p>301' 2'-12" RCP SSS1 @ 1.00% (0.5)</p>



DATE	
BY	
DESIGNED	
CHECKED	
IN CHARGE	
DATE	
BY	
DESIGNED	
CHECKED	
IN CHARGE	

DATE	
BY	
DESIGNED	
CHECKED	
IN CHARGE	
DATE	
BY	
DESIGNED	
CHECKED	
IN CHARGE	

FILE NAME = 13375_02-PLPR 01 - IDOT UTIL02	USER NAME =	DESIGNED - ENA	REVISED - A 2.14.2017	STATE OF ILLINOIS DEPARTMENT OF TRANSPORTATION		US 30 (LINCOLN HIGHWAY) AT KOSTNER AVENUE INTERSECTION IMPROVEMENTS DRAINAGE & UTILITIES		F&P RTE.	SECTION	COUNTY	TOTAL SHEETS	SHEET NO.
	PLOT SCALE =	CHECKED - PKB	REVISED -					353	13-00063-00-CH	COOK	63	15
	PLOT DATE = 05-18-16	DRAWN - PS/RG	REVISED -					CONTRACT NO. 61C11				
		CHECKED - AG	REVISED -			SCALE: H 1"=50' V 1"=5'		SHEET NO. 15 OF 63 SHEETS		STA.	TO STA.	
								FED. ROAD DIST. NO. 1		ILLINOIS	FED. AID PROJECT M-4003(216)	