

STATE OF ILLINOIS  
DEPARTMENT OF TRANSPORTATION  
DIVISION OF HIGHWAYS

F.A. RTE.	SECTION	COUNTY	TOTAL SHEETS	SHEET NO.
	PARK ROADS 2016-01	ROCK ISLAND	18	1
		ILLINOIS	CONTRACT NO. 46398	

STATE STANDARDS

- 420701-02
- 424001-08
- 542301-03
- 542401-01
- 602301-04
- 602401-03
- 602601-03
- 604001-04
- 604051-04
- 606001-06
- 701901-04
- 780001-05

I.D.O.T./I.H.P.A. STATEWIDE  
BLACK HAWK STATE HISTORICAL SITE

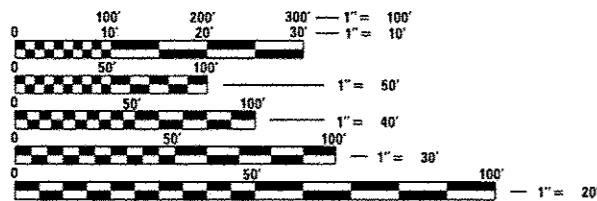
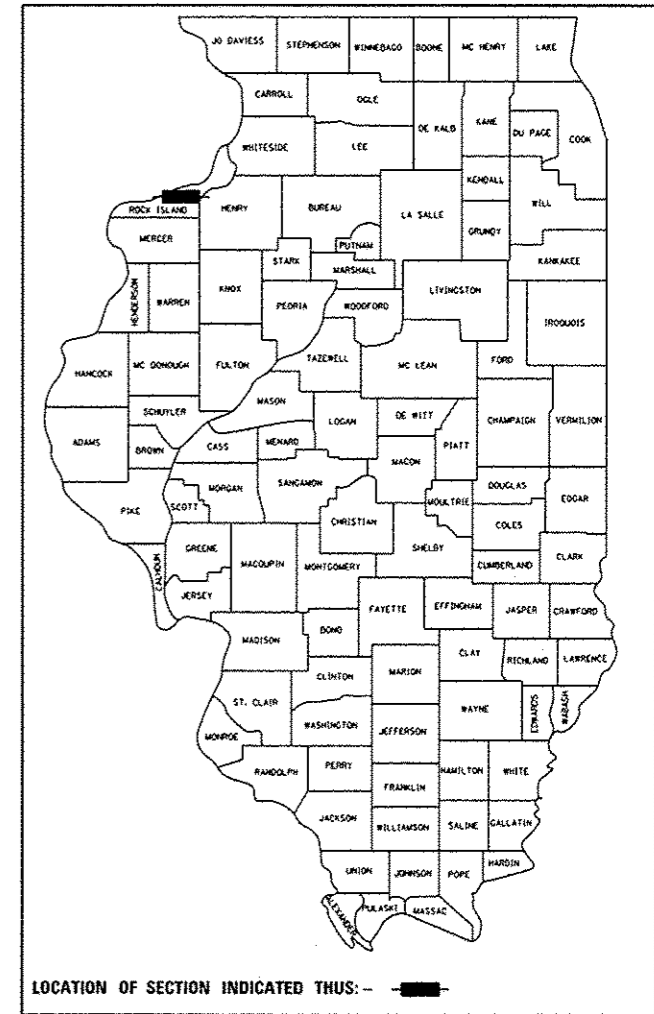
SECTION PARK ROADS 2016-01

PARKING LOT IMPROVEMENTS  
ROCK ISLAND COUNTY  
I.D.O.T. PROJECT No. P-30-001-14

C-30-007-16

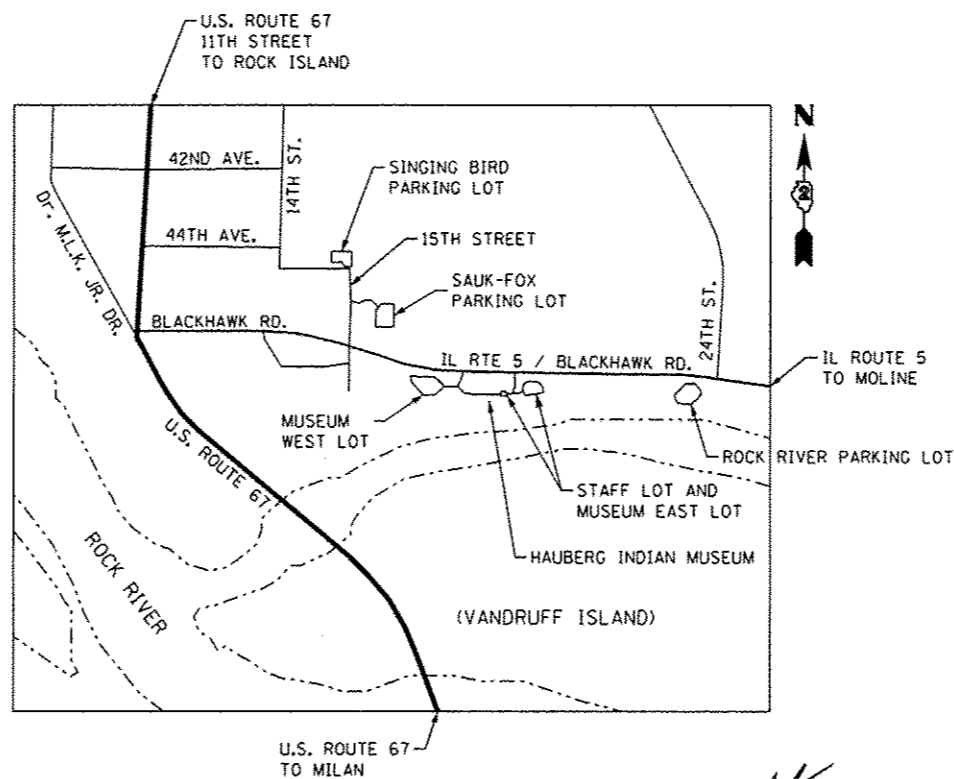
INDEX OF SHEETS

- 1 COVER SHEET
- 2 SUMMARY OF QUANTITIES
- 3 SUMMARY OF QUANTITIES (CONTINUED) & GENERAL NOTES
- 4 SCHEDULE OF QUANTITIES
- 5 EXISTING SITE AND DEMOLITION PLAN (SINGING BIRD LOT)
- 6 EXISTING SITE AND DEMOLITION PLAN (SAUK FOX LOT)
- 7 EXISTING SITE AND DEMOLITION PLAN (MUSEUM WEST LOT)
- 8 EXISTING SITE AND DEMOLITION PLAN (STAFF & MUSEUM EAST LOT)
- 9 EXISTING SITE AND DEMOLITION PLAN (ROCK RIVER LOT)
- 10 GEOMETRIC/SITE AND GRADING PLAN (SINGING BIRD LOT)
- 11 GEOMETRIC/SITE PLAN (SAUK FOX LOT)
- 12 GEOMETRIC/SITE AND GRADING PLAN (MUSEUM WEST LOT)
- 13 PAVEMENT MARKING AND SIDEWALK DETAIL (MUSEUM WEST LOT)
- 14 GEOMETRIC/SITE AND GRADING PLAN (STAFF & MUSEUM EAST LOT)
- 15 GEOMETRIC/SITE PLAN (ROCK RIVER LOT)
- 16 TYPICAL SECTIONS AND SITE DETAILS
- 17 SITE DETAILS (CONTINUED)
- 18 DISTRICT 2 STANDARDS



FULL SIZE PLANS HAVE BEEN PREPARED USING STANDARD ENGINEERING SCALES. REDUCED SIZED PLANS WILL NOT CONFORM TO STANDARD SCALES. IN MAKING MEASUREMENTS ON REDUCED PLANS, THE ABOVE SCALES MAY BE USED.

J.U.L.I.E.  
JOINT UTILITY LOCATION INFORMATION FOR EXCAVATION  
1-800-892-0123  
OR 811



ROBERT H. DALTON  
REGISTERED PROFESSIONAL ENGINEER  
OF ILLINOIS  
12/21/15  
Exp. 11/30/17

STATE OF ILLINOIS  
DEPARTMENT OF TRANSPORTATION  
DIVISION OF HIGHWAYS

SUBMITTED December 21, 15

[Signature]  
DEPUTY DIRECTOR OF HIGHWAYS, REGION ENGINEER

[Signature] Jan 29 2016  
Maurice M. Addis, P.E.  
ENGINEER OF DESIGN AND ENVIRONMENT

[Signature] Jan 29 2016  
Omer Osman, P.E.  
DIRECTOR OF HIGHWAYS, CHIEF ENGINEER

PROJECT ENGINEER : VINCE MADONIA (217) 782-4074

CONTRACT NO. 46398

PRINTED BY THE AUTHORITY  
OF THE STATE OF ILLINOIS

CODE NO.	ITEM	UNIT	TOTAL QUANTITY	CONSTR. CODE
				100% STATE
				NONE 0005 S.N.
20100110	TREE REMOVAL (6 TO 15 UNITS DIAMETER)	UNIT	7	7
20800150	TRENCH BACKFILL	CU YD	3.2	3.2
21101600	TOPSOIL FURNISH AND PLACE, VARIABLE DEPTH	SQ YD	30.5	30.5
28000510	INLET FILTERS	EACH	2	2
31101200	SUBBASE GRANULAR MATERIAL, TYPE B 4"	SQ YD	191.2	191.2
35101600	AGGREGATE BASE COURSE, TYPE B 4"	SQ YD	298.8	298.8
35101800	AGGREGATE BASE COURSE, TYPE B 6"	SQ YD	166.1	166.1
40800050	INCIDENTAL HOT-MIX ASPHALT SURFACING	TON	37.2	37.2
42000100	PORTLAND CEMENT CONCRETE PAVEMENT 6"	SQ YD	291.1	291.1
42000300	PORTLAND CEMENT CONCRETE PAVEMENT 8"	SQ YD	7.7	7.7
44213100	PAVEMENT FABRIC	SQ YD	7.7	7.7
42400200	PORTLAND CEMENT CONCRETE SIDEWALK 5 INCH	SQ FT	1720.8	1720.8
42400800	DETECTABLE WARNINGS	SQ FT	413.7	413.7
44000100	PAVEMENT REMOVAL	SQ YD	300.7	300.7

CODE NO.	ITEM	UNIT	TOTAL QUANTITY	CONSTR. CODE
				100% STATE
				NONE 0005 S.N.
44000500	COMBINATION CURB AND GUTTER REMOVAL	FOOT	153.8	153.8
44000600	SIDEWALK REMOVAL	SQ FT	1413.8	1413.8
45100200	CRACK FILLING	POUND	8283	8283
54213447	END SECTIONS 12"	EACH	1	1
550B0050	STORM SEWERS, CLASS B, TYPE 1 12"	FOOT	90.4	90.4
60218400	MANHOLES, TYPE A, 4'-DIAMETER, TYPE 1 FRAME, CLOSED LID	EACH	1	1
60608572	COMBINATION CONCRETE CURB AND GUTTER, TYPE M-4.18	FOOT	56.6	56.6
60608582	COMBINATION CONCRETE CURB AND GUTTER, TYPE M-4.24	FOOT	153.8	153.8
67100100	MOBILIZATION	LSUM	1	1
78001100	PAINT PAVEMENT MARKING - LETTERS AND SYMBOLS	SQ FT	172	172
78001110	PAINT PAVEMENT MARKING - LINE 4"	FOOT	9558	9558
78001130	PAINT PAVEMENT MARKING - LINE 6"	FOOT	2328.5	2328.5
84200804	REMOVAL OF POLE FOUNDATION	EACH	1	1
X0300019	REMOVE AND REINSTALL PARKING BLOCKS	EACH	54	54

\* SPECIALTY ITEMS

**GENERAL NOTES**

- 1 SPECIFICATIONS SHALL BE THE "STANDARD SPECIFICATIONS FOR ROAD AND BRIDGE CONSTRUCTION" ADOPTED JAN. 1, 2012.
- 2 ALL ELEVATIONS ARE REFERENCED TO ELEVATIONS ESTABLISHED BY VASCONCELLES ENGINEERING CORP.
- 3 EXCESS DIRT FROM CONSTRUCTION OPERATIONS OR UNSUITABLE FILL MATERIAL MUST BE STORED ON SITE AT A LOCATION TO BE DETERMINED BY THE SITE PERSONEL. MEETING THE REQUIREMENTS OF ART. 202.03.
- 4 THE CONTRACTOR SHALL ASSUME COMPLETE RESPONSIBILITY FOR JOB SITE CONDITIONS DURING THE COURSE OF CONSTRUCTION INCLUDING SAFETY OF ALL PERSONS AND PROPERTY, THAT THIS REQUIREMENT SHALL APPLY CONTINUOUSLY AND NOT BE LIMITED TO NORMAL WORKING HOURS, AND THAT THE CONTRACTOR SHALL DEFEND, IDEMNIFY, AND HOLD THE OWNER AND THE ENGINEER HARMLESS FROM ANY AND ALL LIABILITY, REAL OR ALLEGED, IN CONNECTION WITH THE PERFORMANCE OF WORK ON THIS PROJECT, EXCEPTING FOR LIABILITY ARISING FROM THE SOLE NEGLIGENCE OF THE OWNER OR THE ENGINEER.
- 5 WHERE SECTIONS STONES OR PROPERTY MARKERS ARE ENCOUNTERED, THE ENGINEER SHALL BE NOTIFIED BEFORE SUCH STONES OR MARKERS ARE REMOVED. THE CONTRACTOR SHALL PROTECT AND PRESERVE ALL PROPERTY MARKERS UNTIL AN OWNER OR AUTHORIZED SURVEYOR HAS WITNESSED OR REFERENCED THEIR LOCATION.
- 6 ALL CONSTRUCTION LAYOUT SHALL BE THE RESPONSIBILITY OF THE CONTRACTOR.
- 7 THE FINAL TOP FOUR INCHES OF SOIL IN ANY RIGHT-OF-WAY AREA DISTURBED BY THE CONTRACTOR MUST BE CAPABLE OF SUPPORTING VEGETATION. THE SOIL MUST BE FROM THE A HORIZON (ZERO TO 2' DEEP) OF SOIL PROFILES OF LOCAL SOILS. THE COST OF THIS WORK SHALL BE INCLUDED IN THE UNIT PRICES BID AND NO ADDITIONAL COMPENSATION WILL BE ALLOWED.
- 8 ALL BORROW/WASTE/USE SITES MUST BE APPROVED BY THE DEPARTMENT PRIOR TO REMOVING ANY MATERIAL FROM THE PROJECT OR INITIATING ANY EARTHMOVING ACTIVITIES, INCLUDING TEMPORARY STOCKPILING OUTSIDE THE LIMITS OF CONSTRUCTION.
- 9 THE CONTRACTOR SHALL SEED ALL DISTURBED AREAS WITHIN THE PROJECT LIMITS. SEEDING CLASS 4 OR 2A SHALL BE USED, EXCEPT IN FRONT OF PROPERTIES WHERE THE GRASS WILL BE MOWED, THEN USE SEEDING CLASS 1. CLASS 2A SHALL BE USED ON FRONT SLOPES AND DITCH BOTTOMS. CLASS 4 SHALL BE USED BEHIND TYPE A GUTTER, ON ALL BACKSLOPES AND AREAS BEHIND THE BACKSLOPE, AND BEYOND THE TOE OF FRONT SLOPE ON FILL SECTIONS WITHOUT DITCHES. THIS WORK WILL BE INCLUDED IN THE CONTRACT UNIT PRICE PER CUBIC YARD FOR "EARTH EXCAVATION (SPECIAL)."
- 10 FERTILIZER SHALL BE APPLIED TO ALL DISTURBED AREAS AND INCORPORATED INTO THE SEEDBED PRIOR TO SEEDING OR PLACEMENT OF SOD AT THE RATE SPECIFIED IN SECTIONS 250 AND 252 OF THE STANDARD SPECIFICATIONS. THIS WORK SHALL BE INCLUDED IN THE COST OF "EARTH EXCAVATION (SPECIAL)."
- 11 MULCH METHOD II SHALL BE APPLIED OVER ALL SEEDED AREAS. THIS SHALL BE INCLUDED IN THE COST OF THE "EARTH EXCAVATION (SPECIAL)."

CODE NO.	ITEM	UNIT	TOTAL QUANTITY	CONSTR. CODE
				100% STATE
				NONE
				0005
				S.N.
X0301430	PRECAST CONCRETE PARKING BLOCK	EACH	12	12
X0322329	TIMBER CURB REMOVAL	FOOT	153.7	153.7
X0327308	PARKING LOT SEAL COAT	GALLON	3148	3148
X2020410	EARTH EXCAVATION (SPECIAL)	CU YD	87.4	87.4
X4402400	CURB REMOVAL (SPECIAL)	FOOT	63.9	63.9
X6024242	INLETS, SPECIAL, NO. 1	EACH	1	1
X6024244	INLETS, SPECIAL, NO. 2	EACH	1	1
X6340205	GUARD POSTS REMOVAL	EACH	6	6
X7010216	TRAFFIC CONTROL AND PROTECTION, (SPECIAL)	LSUM	1	1
X7240600	REMOVE AND RE-ERECT EXISTING SIGN	EACH	10	10
Z0007430	TEMPORARY SIDEWALK	SQ FT	168.2	168.2
Z0013798	CONSTRUCTION LAYOUT	LSUM	1	1

• SPECIALTY ITEMS

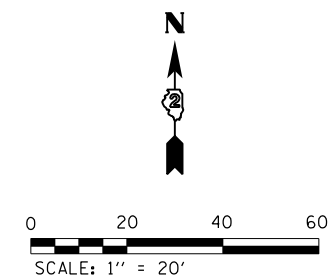
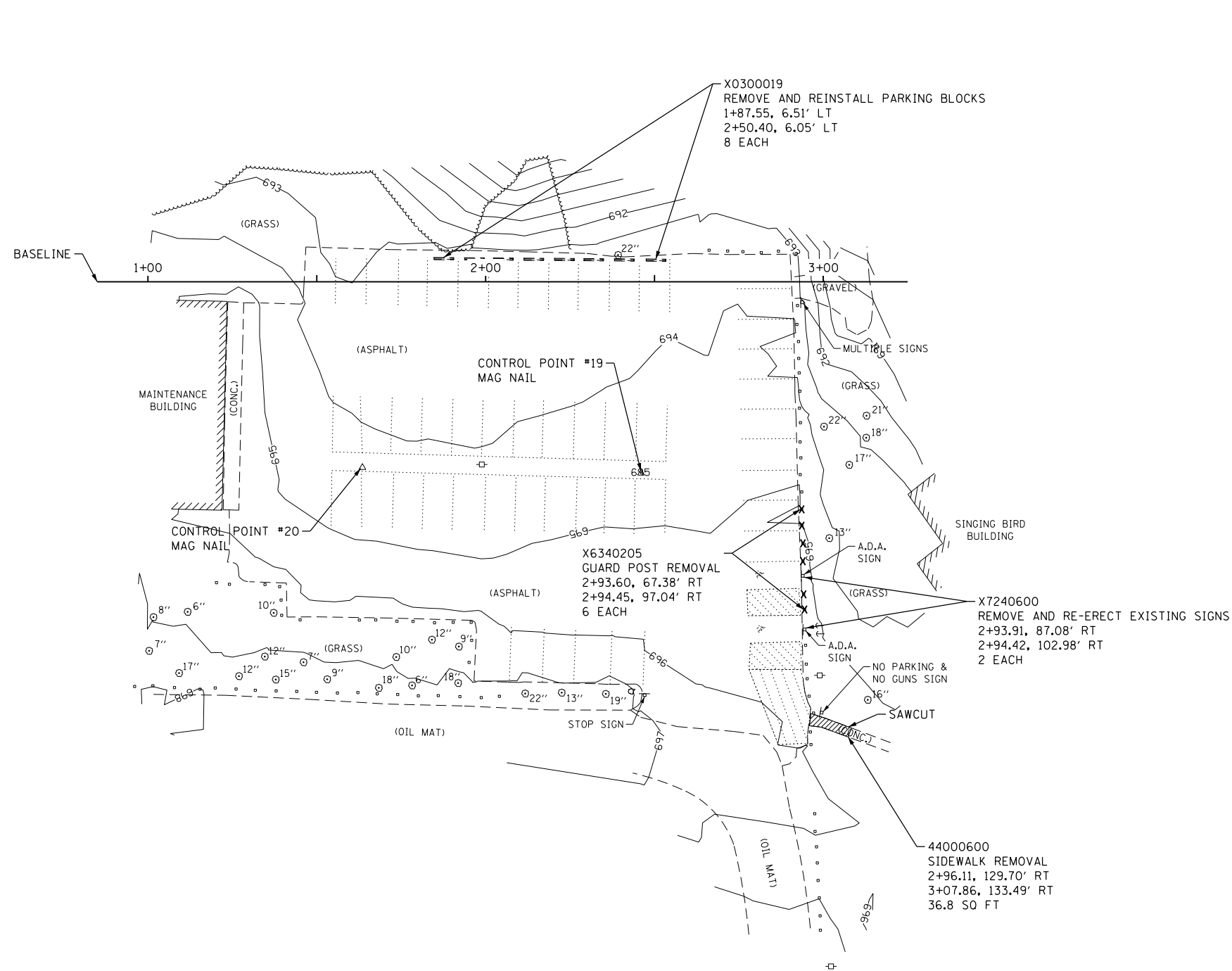
FILE NAME *	USER NAME * Denise	DESIGNED - R.H.D./D.R.C.	REVISED -	<b>STATE OF ILLINOIS DEPARTMENT OF TRANSPORTATION</b>	<b>SUMMARY OF QUANTITIES (CONTINUED) &amp; GENERAL NOTES BLACK HAWK STATE HISTORICAL SITE</b>				F.A. RATE	SECTION	COUNTY	TOTAL SHEETS	SHEET NO.
S:\CAD Drawings\CAD Drawings\CAD Drawings\250\250-141-C Black Hawk\CD\PLT.dgn		DRAWN - D.R.C.	REVISED -		SCALE: N/A	SHEET 3	OF 18 SHEETS	STA. N/A	TO STA. N/A	PARK ROADS 2016-01	ROCK ISLAND	18	3
PLDT SCALE = 48,2000 1/4 in.		CHECKED - R.H.D.	REVISED -		CONTRACT NO. 46398								
Default		DATE - DEC. 18, 2015	REVISED -		ILLINOIS FED. AID PROJECT								

PAVING SCHEDULE														
LOCATION	SUBBASE GRANULAR TYPE B 4" SQ YD	AGGREGATE BASE CRSE TY. B, 4" SQ YD	AGGREGATE BASE CRSE TY. B, 6" SQ YD	INCIDENTAL H.M.A. SURFACING TON	PC CONC PAVEMENT 6" SQ YD	PC CONC PAVEMENT 8" SQ YD	PAVEMENT FABRIC SQ YD	PC CONC SIDEWALK 5 INCH SQ FT	DETECTABLE WARNINGS SQ FT	CRACK FILLING POUND	COMB CURB & GUTR TY M-4.18 FOOT	COMB CURB & GUTR TY M-4.24 FOOT	PARKING LOT SEAL COAT GALLON	EARTH EXCAVATION (SPECIAL) CU YD
SINGING BRD LOT										1433			601	
SAUK FOX LOT										1739			654	
MUSEUM WEST LOT										2505			887	
MUSEUM EAST LOT										1142			416	
ROCK RIVER LOT										1464			590	
2+92.53, 64.74' RT to 2+93.75, 100.72' RT									72.1					
2+96.08, 127.94 to 2+95.48, 132.90' RT									9.4					
2+97.53, 64.53' RT to 3+07.37, 134.82' RT	54.5							490.1						13.6
20+72.08, 51.16' RT to 22+39.15, 41.65' RT	136.7							1230.7						
20+89.40, 36.33' RT to 22+39.35, 25.42' RT												153.8		
21+17.39, 39.47' RT to 22+34.41, 34.82' RT									229.3					
21+25.05, 60.68' LT to 21+69.64, 39.77' LT			166.1	37.2										68.6
21+90.01, 45.55' RT to 22+30.54, 45.93' RT														5.2
30+16.26, 0.0' RT to 30+91.11, 0.0' RT		291.1			291.1									
30+19.02, 15.08' LT to 30+30.28, 19.98' LT		7.7				7.7	7.7							
30+31.63, 13.34' LT to 30+71.31, 31.77' LT										56.6				
40+74.76, 25.35' RT to 41+26.19, 25.35' RT									102.9					
TOTAL =	191.2	298.8	166.1	37.2	291.1	7.7	7.7	1720.8	413.7	8283	56.6	153.8	3148	87.4

MISCELLANEOUS ITEMS													
LOCATION	TRENCH BACKFILL CU YD	TOPSOIL FURNISH & PLACE SQ YD	INLET FILTERS EACH	END SECTIONS 12" EACH	STRM SEWR CLASS B TY 1, 12" FOOT	MH, TY. A 4" DIA., TY 1 F CLOSED LID EACH	MOBILIZATION LSUM	PRECAST CONC. P. BLOCKS EACH	INLETS SPECIAL No. 1 EACH	INLETS SPECIAL No. 2 EACH	TRAF CNTRL & PROTECTN (SPECIAL) LSUM	TEMPORARY SIDEWALK SQ FT	CONSTRUCTION LAYOUT LSUM
ENTIRE SITE							1				1		1
1+51.20, 7.23' LT to 2+68.18, 5.00' LT								5					
2+01.57, 115.66' RT to 2+37.59, 116.34' RT								5					
2+89.91, 69.32' RT to 2+90.47, 87.31' RT								2					
20+55.71, 28.45' RT to 20+75.51, 19.41' RT		11.8											
21+90.01, 45.55' RT to 22+30.54, 45.93' RT		18.7									168.2		
22+17.48, 38.27' RT			1						1				
22+17.48, 38.27' RT to 22+38.97, 36.86' RT	3.0												
22+17.48, 38.27' RT to 22+42.42, 36.63' RT					22.0								
22+38.45, 29.34' RT			1						1				
22+38.45, 29.34' RT to 22+39.94, 32.08' RT	0.2												
22+38.45, 29.34' RT to 22+42.42, 36.63' RT					5.3								
22+42.42, 36.63' RT						1							
22+42.42, 36.63' RT to 23+07.42, 32.36' RT					63.1								
23+07.42, 32.36' RT				1									
TOTAL =	3.2	30.5	2	1	90.4	1	1	12	1	1	1	168.2	1

REMOVAL SCHEDULE										
LOCATION	TREE REMOVAL UNITS	PAVEMENT REMOVAL SQ YD	COMB. CURB & GUTR FOOT	SIDEWALK REMOVAL SQ FT	REMOVAL POLE FOUNDATION EACH	REMOVE & REINSTALL P. BLOCKS EACH	TIMBER CURB REMOVAL FOOT	CURB REMOVAL (SPECIAL) FOOT	GUARD POST REMOVAL EACH	REMOVE & RE-ERECT EXIST. SIGNS EACH
1+87.55, 6.51' LT to 2+50.40, 6.05' LT						8				
2+93.60, 67.38' RT to 2+94.45, 97.04' RT								6		
2+93.91, 87.08' RT to 2+94.42, 102.98' RT									2	
2+96.11, 129.70' RT to 3+07.86, 133.49' RT				36.8						
10+93.29, 39.78' LT to 11+09.22, 40.40' LT									2	
11+87.46, 22.43' RT									1	
20+49.88, 22.82' LT to 20+58.67, 7.65' LT									2	
20+55.71, 28.45' RT to 20+75.51, 19.41' RT				106.2						
20+68.03, 8.20' RT									1	
20+73.51, 56.42' RT to 22+35.30, 44.32' RT				1270.8						
20+89.40, 36.33' RT to 22+41.32, 26.66' RT			153.8							
21+25.05, 60.68' LT to 21+69.64, 39.77' LT							153.7			
21+56.44, 51.95' LT	7									
22+32.49, 69.28' LT					1					
30+16.26, 0.0' RT to 30+91.11, 0.0' RT		300.7								
30+26.59, 9.89' LT to 30+70.82, 33.57' LT								63.9		
40+59.59, 71.96' LT to 41+21.07, 84.45' LT						7				
41+08.17, 24.85' RT to 41+53.10, 23.03' RT						5				
41+66.59, 61.21' LT to 41+88.02, 5.29' RT						8				
51+04.91, 47.13' RT to 51+93.58, 38.50' RT						10				
51+11.99, 88.82' RT to 51+91.38, 85.77' RT						8				
51+12.69, 90.83' RT									1	
51+18.05, 25.56' RT to 51+90.08, 24.78' RT						8				
51+67.95, 27.18' LT									1	
TOTAL =	7	300.7	153.8	1413.8	1	54	153.7	63.9	6	10

PAVEMENT MARKING SCHEDULE			
LOCATION	PNT PVMT MARKING LTRS & SYMB SQ FT	PNT PVMT MARKING LINE 4" FOOT	PNT PVMT MARKING LINE 6" FOOT
SINGING BIRD LOT		1799.8	270.6
SAUK FOX LOT		1334.1	394.7
MUSEUM WEST LOT		3381.8	829.0
STAFF PARKING LOT		74.0	
MUSEUM EAST LOT		1443.2	379.6
ROCK RIVER LOT		1525.1	454.6
HANDICAPPED SYMBOLS (SINGING BIRD LOT)	6.2		
HANDICAPPED SYMBOLS (SAUK FOX LOT)	9.3		
HANDICAPPED SYMBOLS (MUSEUM WEST LOT)	12.4		
HANDICAPPED SYMBOLS (MUSEUM EAST LOT)	6.2		
HANDICAPPED SYMBOLS (ROCK RIVER LOT)	6.2		
THROUGH ARROW (MUSEUM WEST LOT)	71.5		
THROUGH ARROW (MUSEUM EAST LOT)	45.5		
2 ARROW COMBINATION (MUSEUM WEST LOT)	14.7		
TOTAL =	172.0	9558.0	2328.5



CONTROL POINT #19  
 N: 1748811.65  
 E: 2184009.96  
 ELEV = 695.04

CONTROL POINT #20  
 N: 1748813.31  
 E: 2183927.47  
 ELEV = 694.79

STATION 1+00  
 N: 1748868.3195  
 E: 2183863.9615

STATION 2+00  
 N: 1748868.3195  
 E: 2183963.9615

STATION 3+00  
 N: 1748868.3195  
 E: 2184063.9615

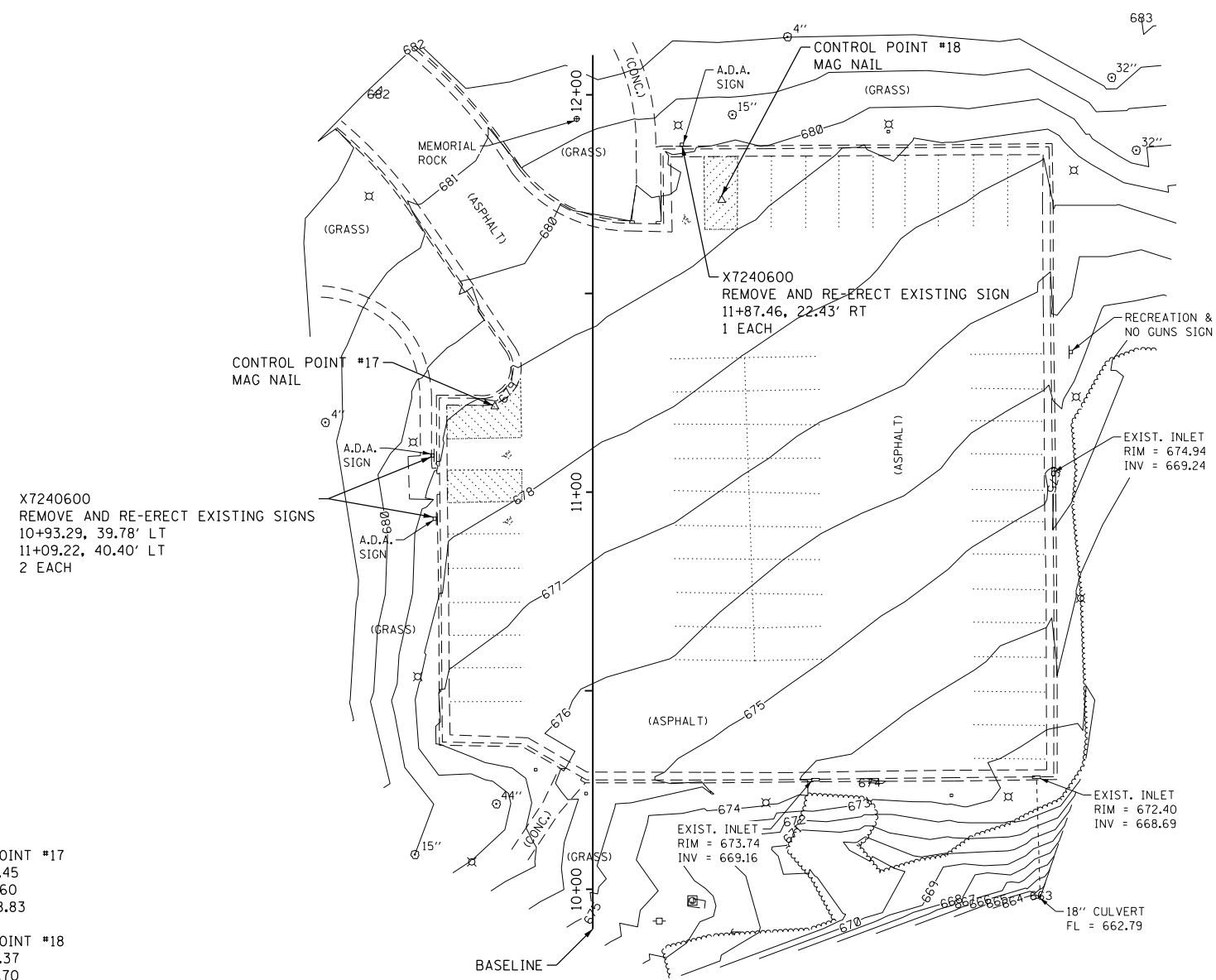
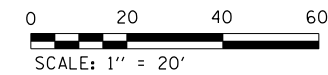
FILE NAME =	USER NAME = SteveK	DESIGNED - R.H.D./D.R.C.	REVISED -
S:\CAD Drawings\CAD Drawings\250\250-141-C Black Hawk\C-DEMO.dgn		DRAWN - D.R.C.	REVISED -
Default	PLOT SCALE = 40.0000' / in.	CHECKED - R.H.D.	REVISED -
	PLOT DATE = 12/21/2015	DATE - DEC. 18, 2015	REVISED -

**STATE OF ILLINOIS  
 DEPARTMENT OF TRANSPORTATION**

**EXISTING SITE & DEMOLITION PLAN (SINGING BIRD LOT)  
 BLACK HAWK STATE HISTORICAL SITE**

SCALE: 1" = 20'    SHEET 5 OF 18 SHEETS    STA. N/A TO STA. N/A

F.A. RTE.	SECTION	COUNTY	TOTAL SHEETS	SHEET NO.
	PARK ROADS 2016-01	ROCK ISLAND	18	5
			CONTRACT NO. 46398	
ILLINOIS FED. AID PROJECT				



X7240600  
REMOVE AND RE-ERECT EXISTING SIGNS  
10+93.29, 39.78' LT  
11+09.22, 40.40' LT  
2 EACH

X7240600  
REMOVE AND RE-ERECT EXISTING SIGN  
11+87.46, 22.43' RT  
1 EACH

CONTROL POINT #17  
N: 1748357.45  
E: 2184281.60  
ELEV = 678.83

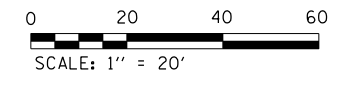
CONTROL POINT #18  
N: 1748409.37  
E: 2184338.70  
ELEV = 679.43

STATION 10+00  
N: 1748235.9020  
E: 2184306.2579

STATION 11+00  
N: 1748335.9020  
E: 2184306.2579

STATION 12+00  
N: 1748435.9020  
E: 2184306.2579

FILE NAME =	USER NAME = SteveK	DESIGNED - R.H.D./D.R.C.	REVISED -	<b>STATE OF ILLINOIS DEPARTMENT OF TRANSPORTATION</b>	<b>EXISTING SITE CONDITIONS &amp; DEMOLITION PLAN (SAUK FOX LOT) BLACK HAWK STATE HISTORICAL SITE</b>	F.A. RTE.	SECTION	COUNTY	TOTAL SHEETS	SHEET NO.
S:\CAD Drawings\CAD Drawings\250\250-141-C Black Hawk\C-DEMO.dgn	DRAWN - D.R.C.	REVISED -				PARK ROADS 2016-01	ROCK ISLAND	18	6	
Default	PLOT SCALE = 40.0000' / in.	CHECKED - R.H.D.	REVISED -			CONTRACT NO. 46398				
	PLOT DATE = 12/21/2015	DATE - DEC. 18, 2015	REVISED -			SCALE: 1" = 20'	SHEET 6 OF 18 SHEETS	STA. N/A TO STA. N/A	ILLINOIS FED. AID PROJECT	

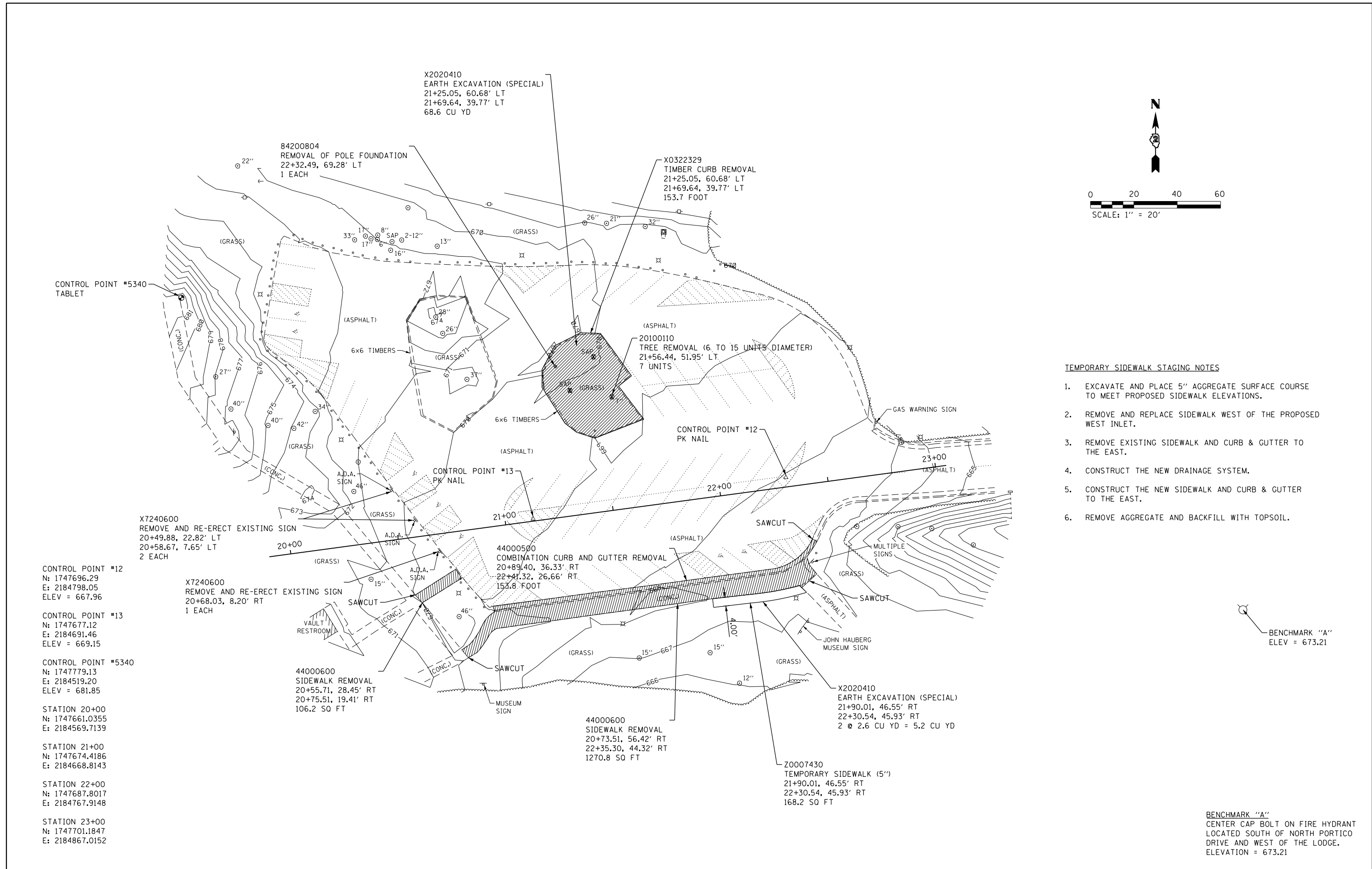


**TEMPORARY SIDEWALK STAGING NOTES**

1. EXCAVATE AND PLACE 5" AGGREGATE SURFACE COURSE TO MEET PROPOSED SIDEWALK ELEVATIONS.
2. REMOVE AND REPLACE SIDEWALK WEST OF THE PROPOSED WEST INLET.
3. REMOVE EXISTING SIDEWALK AND CURB & GUTTER TO THE EAST.
4. CONSTRUCT THE NEW DRAINAGE SYSTEM.
5. CONSTRUCT THE NEW SIDEWALK AND CURB & GUTTER TO THE EAST.
6. REMOVE AGGREGATE AND BACKFILL WITH TOPSOIL.

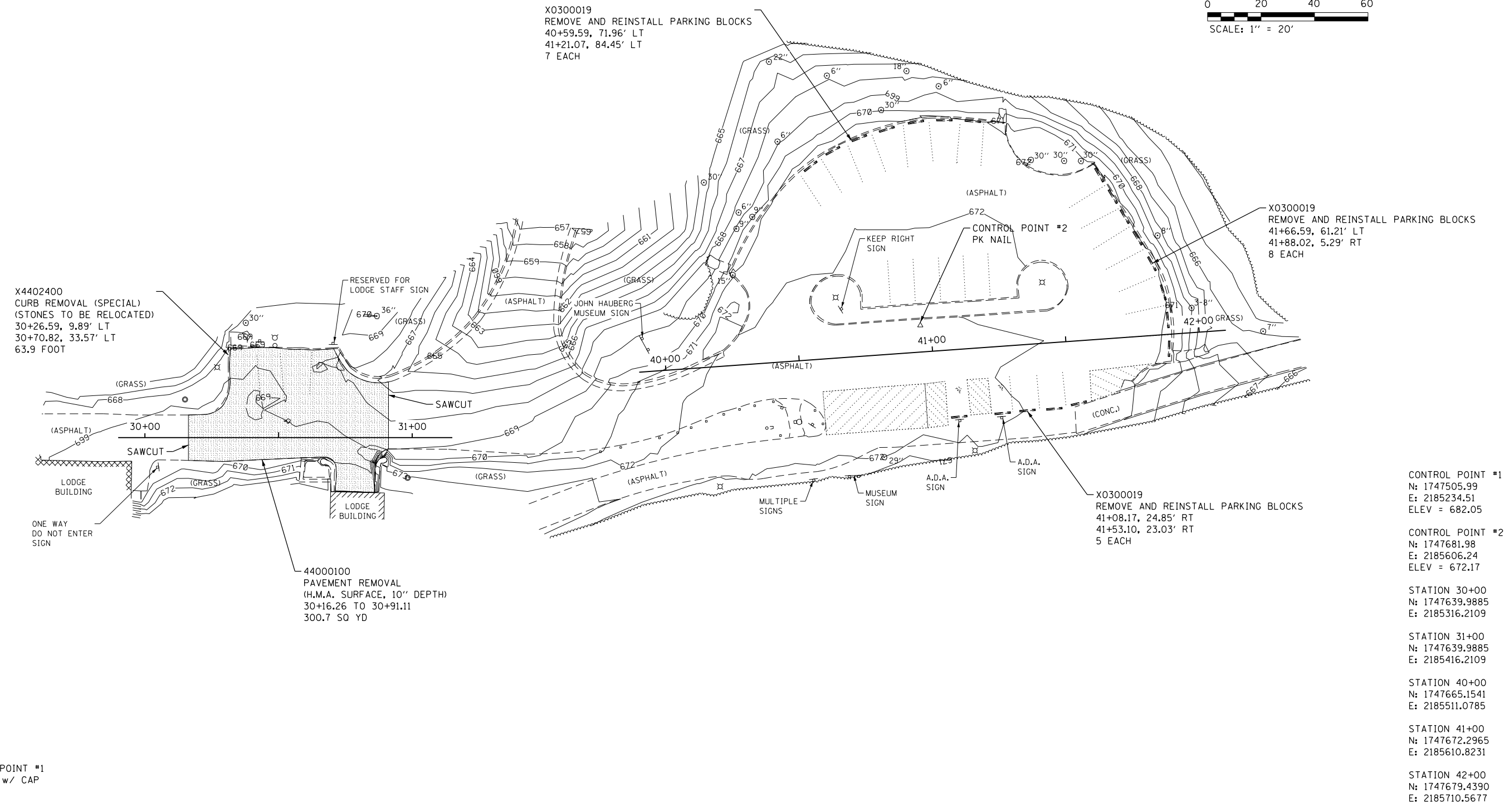
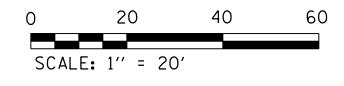
BENCHMARK "A"  
ELEV = 673.21

BENCHMARK "A"  
CENTER CAP BOLT ON FIRE HYDRANT  
LOCATED SOUTH OF NORTH PORTICO  
DRIVE AND WEST OF THE LODGE.  
ELEVATION = 673.21



FILE NAME =	USER NAME = SteveK	DESIGNED - R.H.D./D.R.C.	REVISED -	<b>STATE OF ILLINOIS DEPARTMENT OF TRANSPORTATION</b>	<b>EXISTING SITE &amp; DEMOLITION PLAN (MUSEUM WEST LOT) BLACK HAWK STATE HISTORICAL SITE</b>	F.A. RTE.	SECTION	COUNTY	TOTAL SHEETS	SHEET NO.	
Si:\CAD Drawings\CAD Drawings\250\250-141-C Black Hawk\C-DEMO.dgn	DRAWN - D.R.C.	REVISOR -				PARK ROADS 2016-01	ROCK ISLAND	18	7		
Default	PLOT SCALE = 40.0000' / in.	CHECKED - R.H.D.	REVISOR -			CONTRACT NO. 46398					
	PLOT DATE = 12/21/2015	DATE - DEC. 18, 2015	REVISOR -			ILLINOIS FED. AID PROJECT					

SCALE: 1" = 20' SHEET 7 OF 18 SHEETS STA. N/A TO STA. N/A

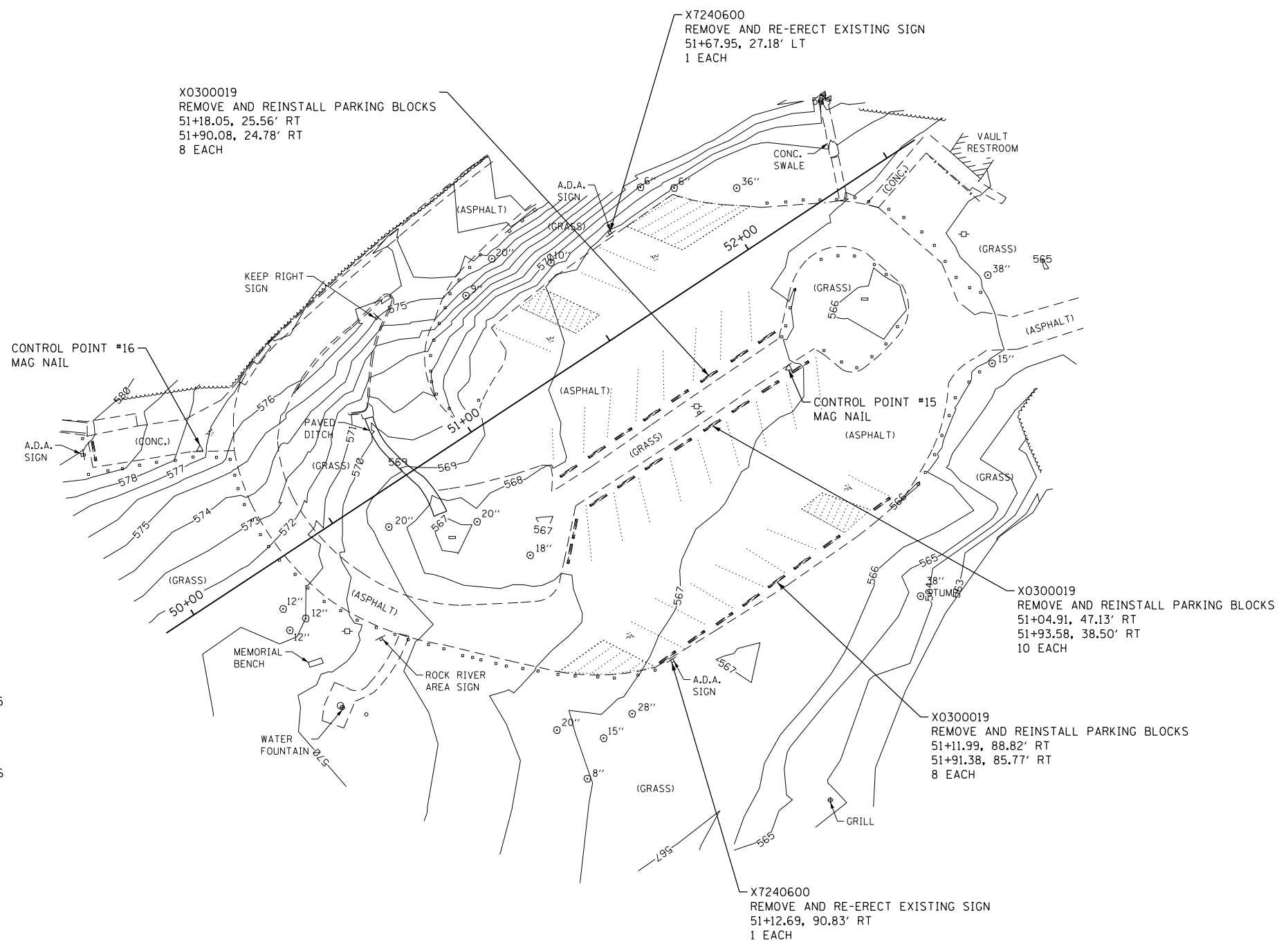
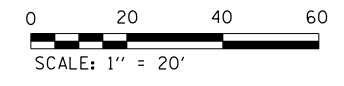


CONTROL POINT #1  
IRON PIN w/ CAP

CONTROL POINT #1	N: 1747505.99	E: 2185234.51	ELEV = 682.05
CONTROL POINT #2	N: 1747681.98	E: 2185606.24	ELEV = 672.17
STATION 30+00	N: 1747639.9885	E: 2185316.2109	
STATION 31+00	N: 1747639.9885	E: 2185416.2109	
STATION 40+00	N: 1747665.1541	E: 2185511.0785	
STATION 41+00	N: 1747672.2965	E: 2185610.8231	
STATION 42+00	N: 1747679.4390	E: 2185710.5677	

FILE NAME =	USER NAME = SteveK	DESIGNED - R.H.D./D.R.C.	REVISED -	<b>STATE OF ILLINOIS DEPARTMENT OF TRANSPORTATION</b>	<b>EXISTING SITE &amp; DEMOLITION PLAN (STAFF &amp; MUSEUM EAST LOT) BLACK HAWK STATE HISTORICAL SITE</b>	F.A. RTE.	SECTION	COUNTY	TOTAL SHEETS	SHEET NO.
S:\CAD Drawings\CAD Drawings\CAD Drawings\250\250-141-C Black Hawk\C-DEMO.dgn	DRAWN - D.R.C.	REVISIED -				PARK ROADS 2016-01	ROCK ISLAND	18	8	
Default	PLOT SCALE = 40.0000' / in.	CHECKED - R.H.D.	REVISIED -			CONTRACT NO. 46398				
	PLOT DATE = 12/21/2015	DATE - DEC. 18, 2015	REVISIED -			ILLINOIS FED. AID PROJECT				





CONTROL POINT #15  
N: 1747635.3700  
E: 2187033.7200  
ELEV = 567.07

CONTROL POINT #16  
N: 1747610.9900  
E: 2186856.3600  
ELEV = 577.23

STATION 50+00  
N: 1747561.0394  
E: 2186854.5654

STATION 51+00  
N: 1747616.0716  
E: 2186938.0606

STATION 52+00  
N: 1747671.1039  
E: 2187021.5558

FILE NAME =	USER NAME = SteveK	DESIGNED - R.H.D./D.R.C.	REVISED -
S:\CAD Drawings\CAD Drawings\250\250-141-C Black Hawk\C-DEMO.dgn		DRAWN - D.R.C.	REVISED -
Default	PLOT SCALE = 40.0000' / in.	CHECKED - R.H.D.	REVISED -
	PLOT DATE = 12/21/2015	DATE - DEC. 18, 2015	REVISED -

**STATE OF ILLINOIS  
DEPARTMENT OF TRANSPORTATION**

**EXISTING SITE CONDITIONS & DEMOLITION PLAN (ROCK RIVER LOT)  
BLACK HAWK STATE HISTORICAL SITE**

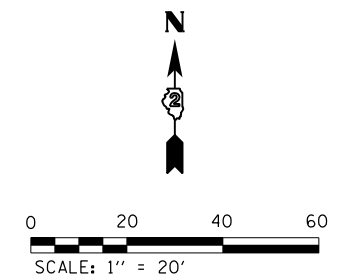
SCALE: 1" = 20'    SHEET 9 OF 18 SHEETS    STA. N/A TO STA. N/A

F.A. RTE.	SECTION	COUNTY	TOTAL SHEETS	SHEET NO.
	PARK ROADS 2016-01	ROCK ISLAND	18	9
			CONTRACT NO. 46398	
ILLINOIS FED. AID PROJECT				

X0327308	PARKING LOT SEAL COAT	601 GALLON
45100200	CRACK FILLING	1433 POUND
X0301430	PRECAST CONCRETE PARKING BLOCK	
1+51.20, 7.23' LT		5 EACH
2+68.18, 5.00' LT		(14 SPACES - 9 EXISTING TO BE REINSTALLED)
2+89.91, 69.32' RT		2 EACH
2+90.47, 87.31' RT		5 EACH
2+01.57, 115.66' RT		
2+37.56, 116.34' RT		

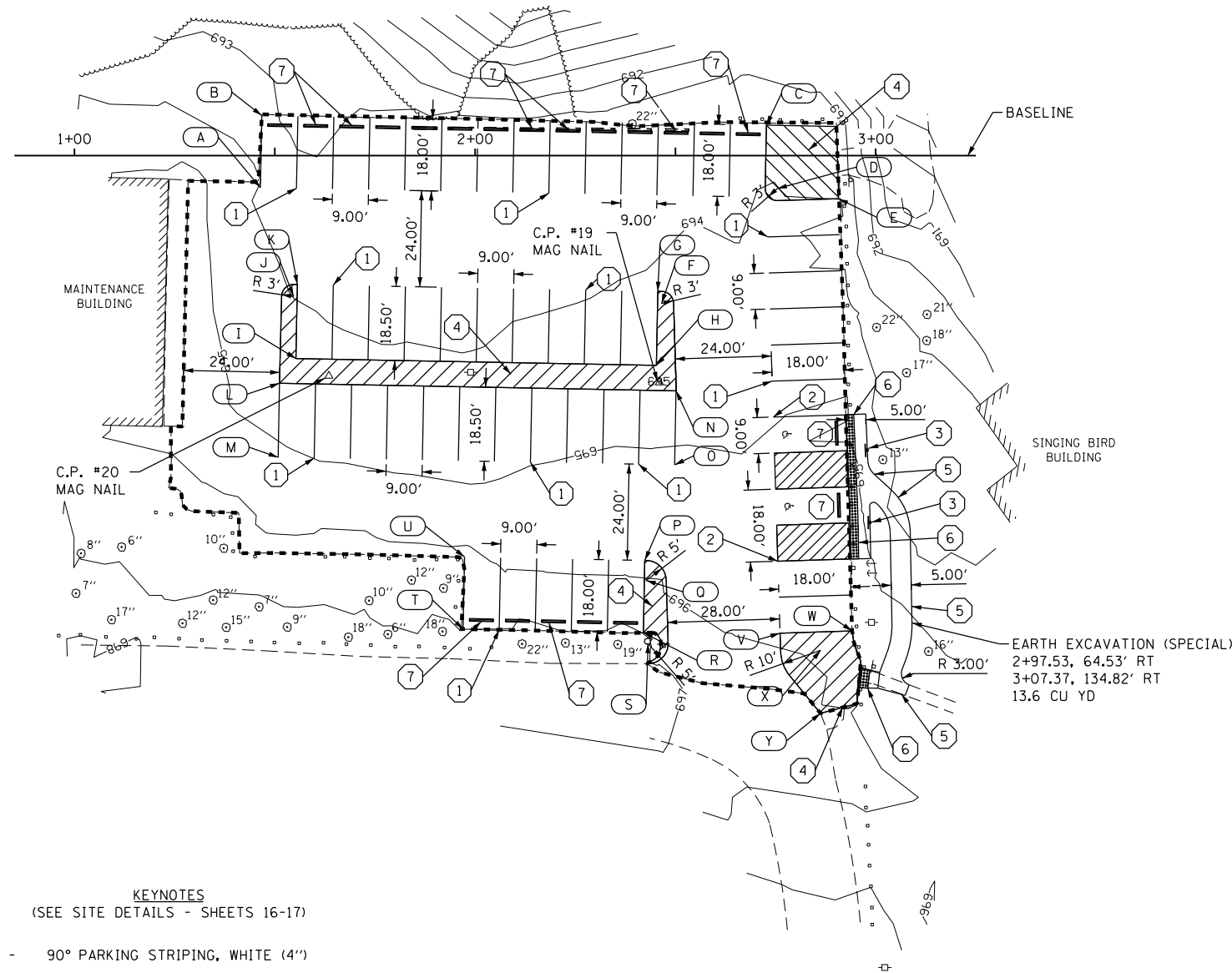
42400200	PORTLAND CEMENT CONCRETE SIDEWALK 5 INCH	490.1 SQ FT
31101200	SUBBASE GRANULAR MATERIAL, TYPE B 4"	54.5 SQ YD
42400800	DETECTABLE WARNINGS	72.1 SQ FT
		9.4 SQ FT

78001110	PAINT PAVEMENT MARKING - LINE 4"	1799.8 FOOT
78001130	PAINT PAVEMENT MARKING - LINE 6"	270.6 FOOT
78001100	PAINT PAVEMENT MARKING - LETTERS AND SYMBOLS	3.1 SQ FT
		3.1 SQ FT
X2020410	EARTH EXCAVATION (SPECIAL)	13.6 CU YD



PAVEMENT MARKING CHART (SINGING BIRD LOT)

No.	STATION	OFFSET	RADIUS
A	1+46.41	8.01' RT	---
B	1+46.75	9.99' LT	---
C	2+72.73	7.58' LT	---
D	2+75.43	8.24' RT	R=3.0'
E	2+90.75	10.77' RT	---
F	2+46.54	36.93' RT	R=3.0'
G	2+45.60	33.91' RT	---
H	2+45.25	52.40' RT	---
I	1+55.26	50.68' RT	---
J	1+54.69	35.17' RT	R=3.0'
K	1+55.62	32.19' RT	---
L	1+51.18	56.86' RT	---
M	1+50.83	75.35' RT	---
N	2+50.16	58.74' RT	---
O	2+49.81	77.23' RT	---
P	1+42.36	101.10' RT	---
Q	2+42.70	106.10' RT	R=5.0'
R	2+42.01	119.09' RT	---
S	2+43.19	121.87' RT	R=5.0'
T	1+97.02	118.24' RT	---
U	1+97.36	100.24' RT	---
V	2+76.13	119.27' RT	---
W	2+94.12	118.71' RT	---
X	2+86.26	123.53' RT	R=10.0'
Y	2+86.21	139.26' RT	---



CONTROL POINT #19  
 N: 1748811.65  
 E: 2184009.96  
 ELEV = 695.04

CONTROL POINT #20  
 N: 1748813.31  
 E: 2183927.47  
 ELEV = 694.79

STATION 1+00  
 N: 1748868.3195  
 E: 2183863.9615

STATION 2+00  
 N: 1748868.3195  
 E: 2183963.9615

STATION 3+00  
 N: 1748868.3195  
 E: 2184063.9615

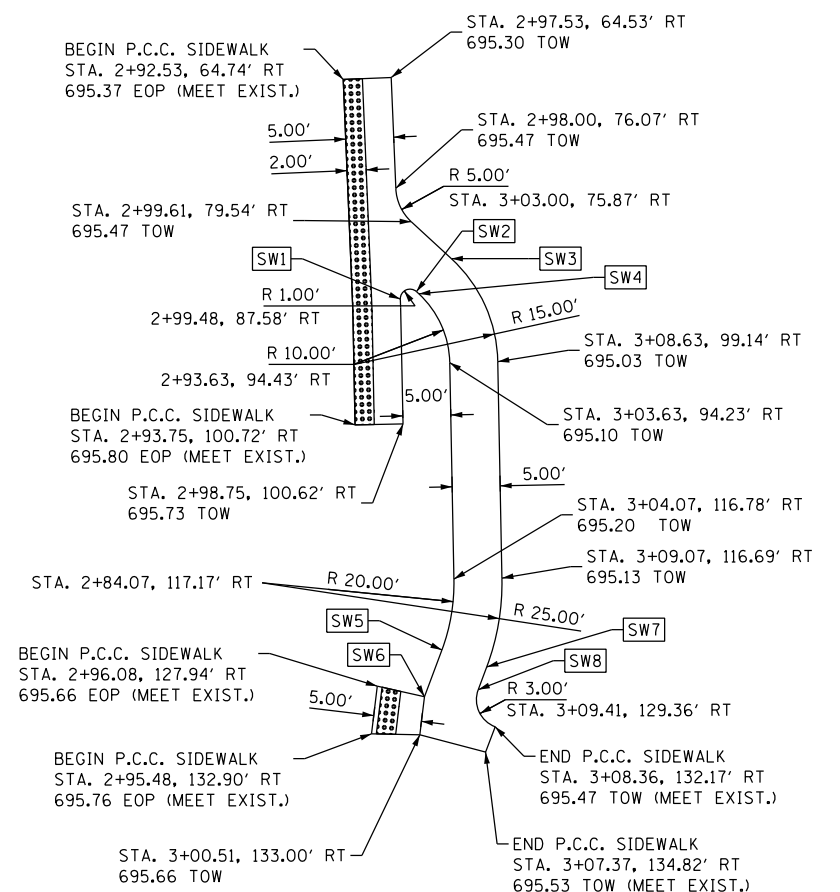
KEYNOTES  
 (SEE SITE DETAILS - SHEETS 16-17)

- ① - 90° PARKING STRIPING, WHITE (4")
- ② - 90° HANDICAPPED PARKING STRIPING, YELLOW (6")
- ③ - HANDICAPPED PARKING SIGN
- ④ - 4" DIAGONAL STRIPE, WHITE (30" O.C.)
- ⑤ - PORTLAND CEMENT CONCRETE SIDEWALK, 5 INCH
- ⑥ - DETECTABLE WARNING
- ⑦ - PRECAST CONCRETE PARKING BLOCK\*

\*PARKING BLOCK NOTE  
 EXISTING PARKING BLOCKS THAT HAVE PREVIOUSLY BEEN REMOVED AND SALVAGED SHALL BE USED FIRST IN REINSTALLING PARKING BLOCKS. ANY PARKING BLOCKS MISSING OR DEEMED UNSALVAGABLE SHALL BE REPLACED WITH NEW PRECAST CONCRETE PARKING BLOCKS.

SIDEWALK CHART

No.	STATION	OFFSET	GRADE
SW1	2+98.48	87.62' RT	695.64 TOW
SW2	3+00.16	86.84' RT	695.49 TOW
SW3	3+03.79	83.39' RT	695.40 TOW
SW4	3+00.40	87.07' RT	695.47 TOW
SW5	3+02.80	124.18' RT	695.44 TOW
SW6	3+00.99	129.03' RT	695.60 TOW
SW7	3+07.49	125.93' RT	695.37 TOW
SW8	3+06.60	128.31' RT	695.45 TOW



NEW SIDEWALK DETAIL  
 SCALE: 1" = 10'



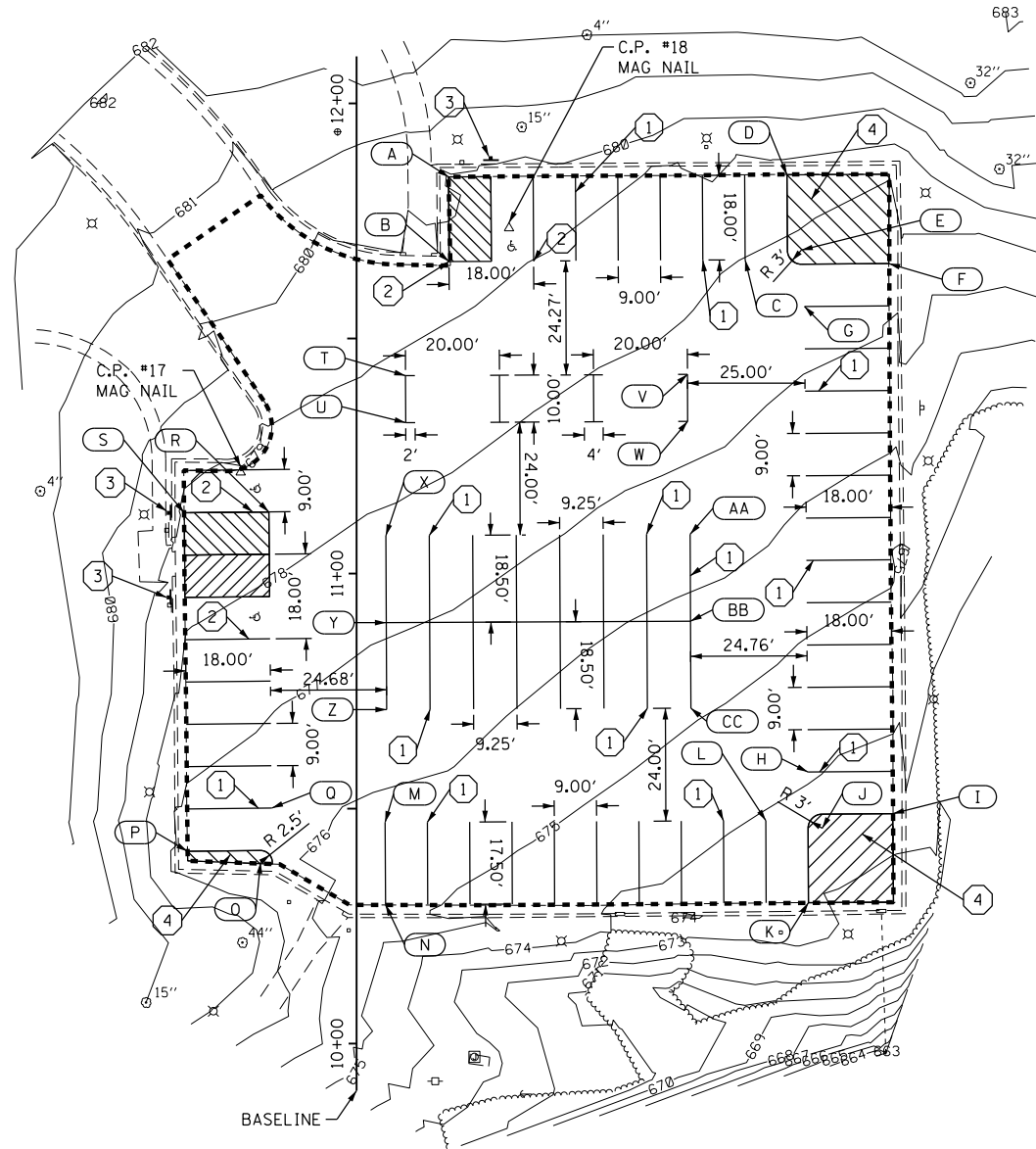
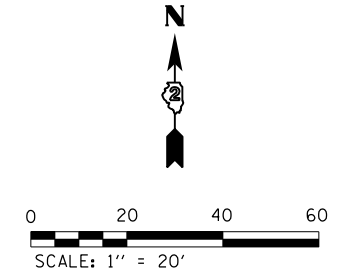
X0327308 PARKING LOT SEAL COAT  
SAUK FOX LOT 654 GALLON

45100200 CRACK FILLING  
SAUK FOX LOT 1739 POUND

78001110 PAINT PAVEMENT MARKING - LINE 4"  
SAUK FOX LOT 1334.1 FOOT

78001130 PAINT PAVEMENT MARKING - LINE 6"  
SAUK FOX LOT 394.7 FOOT

78001100 PAINT PAVEMENT MARKING - LETTERS AND SYMBOLS  
10+90.65, 21.26' LT 3.1 SO FT  
11+17.94, 21.17' LT 3.1 SO FT  
11+69.32, 32.90' RT 3.1 SO FT



PAVEMENT MARKING CHART (ROCK RIVER LOT)

No.	STATION	OFFSET	RADIUS
A	11+84.36	19.57' RT	---
B	11+66.36	19.68' RT	---
C	11+66.74	82.68' RT	---
D	11+84.80	91.57' RT	---
E	11+68.79	94.67' RT	R=3'
F	11+65.93	113.24' RT	---
G	11+56.80	95.31' RT	---
H	10+57.80	96.04' RT	---
I	10+48.93	114.10' RT	---
J	10+45.82	99.08' RT	R=3'
K	10+29.98	96.16' RT	---
L	10+47.44	87.07' RT	---
M	10+47.06	6.07' RT	---
N	10+29.56	6.16' RT	---
O	10+38.59	20.43' LT	R=2.5'
P	10+40.93	35.96' LT	---
Q	10+50.11	18.05' LT	---
R	11+13.11	18.67' LT	---
S	11+12.93	36.67' LT	---
T	11+42.08	10.42' RT	---
U	11+32.08	10.46' RT	---
V	11+42.36	70.42' RT	---
W	11+32.36	70.46' RT	---
X	11+08.06	6.22' RT	---
Y	10+89.57	6.31' RT	---
Z	10+71.07	6.39' RT	---
AA	11+08.37	70.97' RT	---
BB	10+89.87	71.06' RT	---
CC	10+71.37	71.14' RT	---

CONTROL POINT #17  
N: 1748357.45  
E: 2184281.60  
ELEV = 678.83

CONTROL POINT #18  
N: 1748409.37  
E: 2184338.70  
ELEV = 679.43

STATION 10+00  
N: 1748235.9020  
E: 2184306.2579

STATION 11+00  
N: 1748335.9020  
E: 2184306.2579

STATION 12+00  
N: 1748435.9020  
E: 2184306.2579

KEYNOTES  
(SEE SITE DETAILS - SHEETS 16-17)

- ① - 90° PARKING STRIPING, WHITE (4")
- ② - 90° HANDICAPPED PARKING STRIPING, YELLOW (6")
- ③ - HANDICAPPED PARKING SIGN
- ④ - 4" DIAGONAL STRIPE, WHITE (30" O.C.)



- PARKING LOT SEAL COAT LIMITS

FILE NAME =	USER NAME = SteveK	DESIGNED - R.H.D./D.R.C.	REVISED -	<b>STATE OF ILLINOIS DEPARTMENT OF TRANSPORTATION</b>	<b>GEOMETRIC /SITE PLAN (SAUK FOX LOT) BLACK HAWK STATE HISTORICAL SITE</b>	F.A. RTE.	SECTION	COUNTY	TOTAL SHEETS	SHEET NO.	
St:\CAD Drawings\CAD Drawings\250\250-141-C Black Hawk\C-SITE.dgn	DRAWN - D.R.C.	REVISIONS -									
Default	PLOT SCALE = 40.0000' / in.	CHECKED - R.H.D.	REVISIONS -			SCALE: 1" = 20'	SHEET 11 OF 18 SHEETS	STA. N/A	TO STA. N/A	ILLINOIS FED. AID PROJECT	
	PLOT DATE = 12/21/2015	DATE - DEC. 18, 2015	REVISIONS -								

X0327308 PARKING LOT SEAL COAT  
MUSEUM WEST LOT 887 GALLON

45100200 CRACK FILLING  
MUSEUM WEST LOT 2505 POUND

40800050 INCIDENTAL HOT-MIX ASPHALT SURFACING  
21+25.05, 60.68' LT 37.2 TON  
21+69.64, 39.77' LT

35101800 AGGREGATE BASE COURSE, TYPE B 6"  
21+25.05, 60.68' LT 166.1 SQ YD  
21+69.64, 39.77' LT

X0301430 PRECAST CONCRETE PARKING BLOCK  
21+27.91, 33.20' RT 0 EACH  
22+11.92, 33.20' RT  
(4 SPACES - 4 EXISTING TO BE REINSTALLED)

X6024242 INLETS, SPECIAL, No. 1  
22+17.48, 38.27' RT 1 EACH

X6024244 INLETS, SPECIAL, No. 2  
22+38.45, 29.34' RT 1 EACH

60218400 MANHOLES, TYPE A, 4' DIA., TYPE 1 FRAME, CLOSED LID  
22+42.42, 36.63' RT 1 EACH

54213447 END SECTIONS 12"  
23+07.42, 32.36' RT 1 EACH

55080050 STORM SEWERS, CLASS B, TYPE 1 12"  
22+17.48, 38.27' RT 22.0 FOOT  
22+42.42, 36.63' RT 22.0 FOOT  
22+38.45, 29.34' RT 5.3 FOOT  
22+42.42, 36.63' RT 5.3 FOOT  
22+42.42, 36.63' RT 63.1 FOOT  
23+07.42, 32.36' RT

20800150 TRENCH BACKFILL  
22+17.48, 38.27' RT 3.0 CU YD  
22+38.97, 36.86' RT 3.0 CU YD  
22+38.45, 29.34' RT 0.2 CU YD  
22+39.94, 32.08' RT

28000510 INLET FILTERS  
22+17.48, 38.27' RT 1 EACH  
22+38.45, 29.34' RT 1 EACH

21101600 TOPSOIL FURNISH AND PLACE, VARIABLE DEPTH  
20+55.71, 28.45' RT 11.8 SQ YD  
20+75.51, 19.41' RT 18.7 SQ YD  
21+90.01, 46.55' RT  
22+30.54, 45.93' RT

SEE SHEET 13 FOR PAVEMENT MARKING LAYOUT CHART

SEE SHEET 13 FOR PAVEMENT MARKING LAYOUT CHART

C.P. #5340  
TABLET

CENTER OF INLET, SPECIAL, No. 2  
@ STA. 22+38.45, 29.34' RT

**\*PARKING BLOCK NOTE**  
EXISTING PARKING BLOCKS THAT HAVE PREVIOUSLY BEEN REMOVED AND SALVAGED SHALL BE USED FIRST IN REINSTALLING PARKING BLOCKS. ANY PARKING BLOCKS MISSING OR DEEMED UNSALVAGABLE SHALL BE REPLACED WITH NEW PRECAST CONCRETE PARKING BLOCKS.

CONTROL POINT #12  
N: 1747696.29  
E: 2184798.05  
ELEV = 667.96

CONTROL POINT #13  
N: 1747677.12  
E: 2184691.46  
ELEV = 669.15

CONTROL POINT #5340  
N: 1747779.13  
E: 2184519.20  
ELEV = 681.85

STATION 20+00  
N: 1747661.0355  
E: 2184569.7139


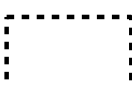
STATION 21+00  
N: 1747674.4186  
E: 2184668.8143

STATION 22+00  
N: 1747687.8017  
E: 2184767.9148

STATION 23+00  
N: 1747701.1847  
E: 2184867.0152

**KEYNOTES**  
(SEE SITE DETAILS - SHEETS 16-17)

- ① - 90° PARKING STRIPING, WHITE (4")
- ①a - 40° PARKING STRIPING, WHITE (4")
- ②a - 40° HANDICAPPED PARKING STRIPING, YELLOW (6")
- ③ - HANDICAPPED PARKING SIGN
- ④ - 4" DIAGONAL STRIPE, WHITE (30" O.C.)
- ⑤ - PORTLAND CEMENT CONCRETE SIDEWALK, 5"
- ⑥ - DETECTABLE WARNING
- ⑦ - PRECAST CONCRETE PARKING BLOCK\*
- ⑧ - COMBINATION CONCRETE CURB AND GUTTER, TYPE M-4.24

-  - FULL DEPTH HOT MIX ASPHALT PAVEMENT (SEE DETAIL - SHEET 16)
-  - PARKING LOT SEAL COAT LIMITS

TOPSOIL FURNISH AND PLACE, VARIABLE DEPTH  
20+55.71, 28.45' RT 11.8 CU YD  
20+75.51, 19.41' RT 18.7 CU YD

SEE SHEET 13 FOR NEW SIDEWALK STATIONING AND GRADING INFORMATION

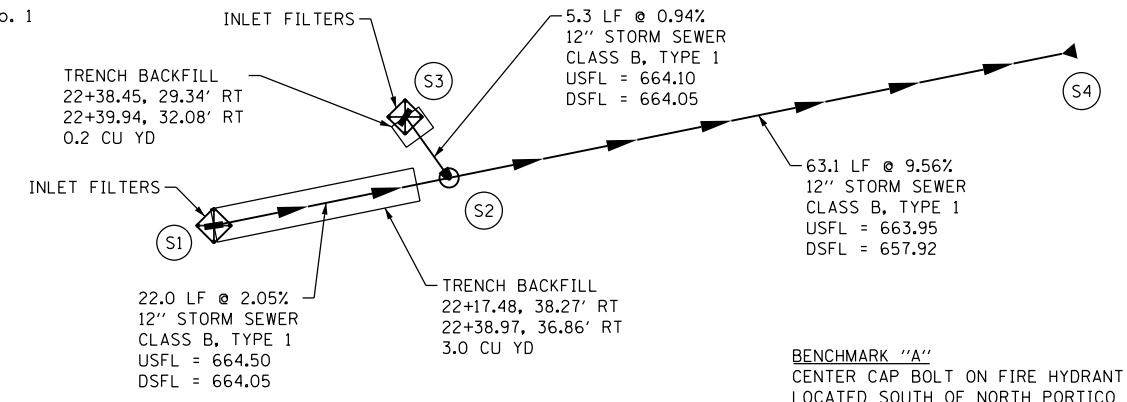
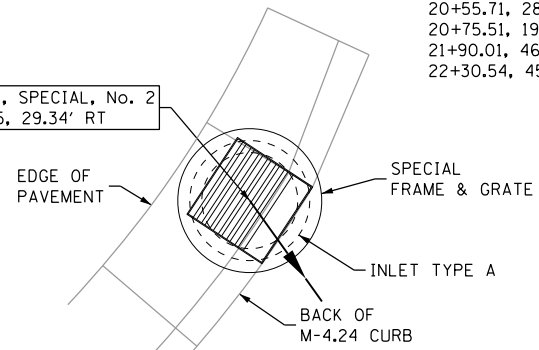
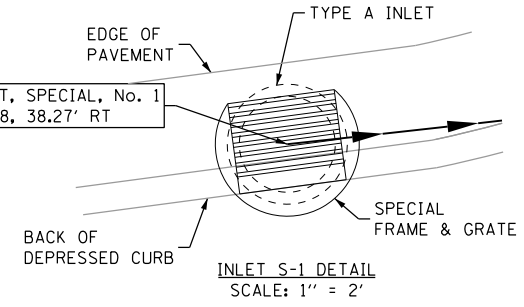
S2 - MANHOLE TYPE A  
4' DIA., TYPE 1 F, CLOSED WITH CONCRETE FLAT SLAB TOP  
RIM = 667.40  
INV = 663.95

TOPSOIL FURNISH AND PLACE, VARIABLE DEPTH  
21+90.01, 46.55' RT 18.7 CU YD  
22+30.54, 45.93' RT

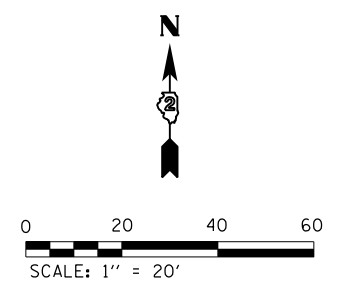
S1 - INLET, SPECIAL, No. 1  
RIM = 667.30 (FL)  
INV = 664.50

S3 - INLET, SPECIAL, No. 2  
RIM = 667.20 (FL)  
INV = 664.10

S4 - 12" END SECTION  
23+07.42, 32.36' RT  
FL = 657.92



BENCHMARK "A"  
CENTER CAP BOLT ON FIRE HYDRANT  
LOCATED SOUTH OF NORTH PORTICO  
DRIVE AND WEST OF THE LODGE.  
ELEVATION = 673.21

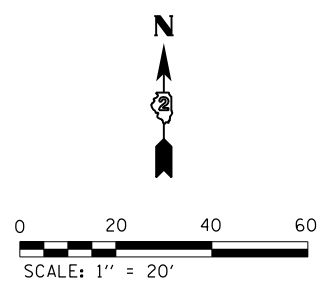


7800110 PAINT PAVEMENT MARKING - LINE 4"  
MUSEUM WEST LOT 3381.8 FOOT

78001130 PAINT PAVEMENT MARKING - LINE 6"  
MUSEUM WEST LOT 829.0 FOOT

78001100 PAINT PAVEMENT MARKING - LETTERS AND SYMBOLS

21+16.95, 24.28' RT	3.1 SO FT
21+44.95, 24.28' RT	3.1 SO FT
21+72.95, 24.28' RT	3.1 SO FT
22+00.24, 23.52' RT	3.1 SO FT
20+54.20, 98.60' LT	6.5 SO FT
20+86.07, 115.88' LT	6.5 SO FT
21+27.56, 84.39' LT	6.5 SO FT
21+88.80, 84.39' LT	6.5 SO FT



PAVEMENT MARKING CHART (MUSEUM WEST LOT)

No.	STATION	OFFSET	RADIUS	No.	STATION	OFFSET	RADIUS
A	21+15.37	100.20' LT	---	O	22+22.12	7.57' RT	---
B	21+05.50	72.39' LT	---	P	22+25.02	12.43' LT	R=20'
C	20+96.94	53.89' LT	---	Q	22+30.51	11.21' LT	---
D	21+05.50	53.89' LT	---	R	22+26.87	20.43' LT	R=40'
E	20+89.15	46.99' LT	---	S	22+32.87	29.10' LT	---
F	21+03.32	35.10' LT	---	T	22+44.68	23.10' LT	---
G	21+18.67	23.10' LT	---	U	22+43.34	35.10' LT	---
H	21+04.49	11.21' LT	---	V	22+15.17	46.99' LT	---
I	21+10.28	4.32' LT	---	W	22+13.50	53.89' LT	---
J	20+91.47	2.32' LT	---	X	22+20.95	53.89' LT	---
K	21+10.00	2.43' LT	R=10' & 22'	Y	22+32.94	52.94' LT	---
L	21+10.11	7.57' RT	---	Z	22+26.91	57.39' LT	R=15'
M	21+18.67	19.57' RT	---	AA	21+12.49	8.10' LT	R=15'
N	21+32.84	31.47' RT	---				

78001100 PAINT PAVEMENT MARKING - LETTERS AND SYMBOLS (CONT.)

22+53.98, 58.91' LT	6.5 SO FT
22+32.87, 29.10' LT	6.5 SO FT
21+66.58, 29.10' LT	6.5 SO FT
20+68.31, 42.69' LT	6.5 SO FT
20+91.47, 2.32' LT	6.5 SO FT
21+35.33, 13.57' RT	6.5 SO FT
22+09.01, 13.57' RT	6.5 SO FT
21+02.31, 28.94' RT	14.7 SO FT

42400200 PORTLAND CEMENT CONCRETE SIDEWALK 5 INCH

20+72.08, 54.16' RT	
22+39.15, 41.65' RT	1230.7 SO FT

31101200 SUBBASE GRANULAR MATERIAL, TYPE B 4"

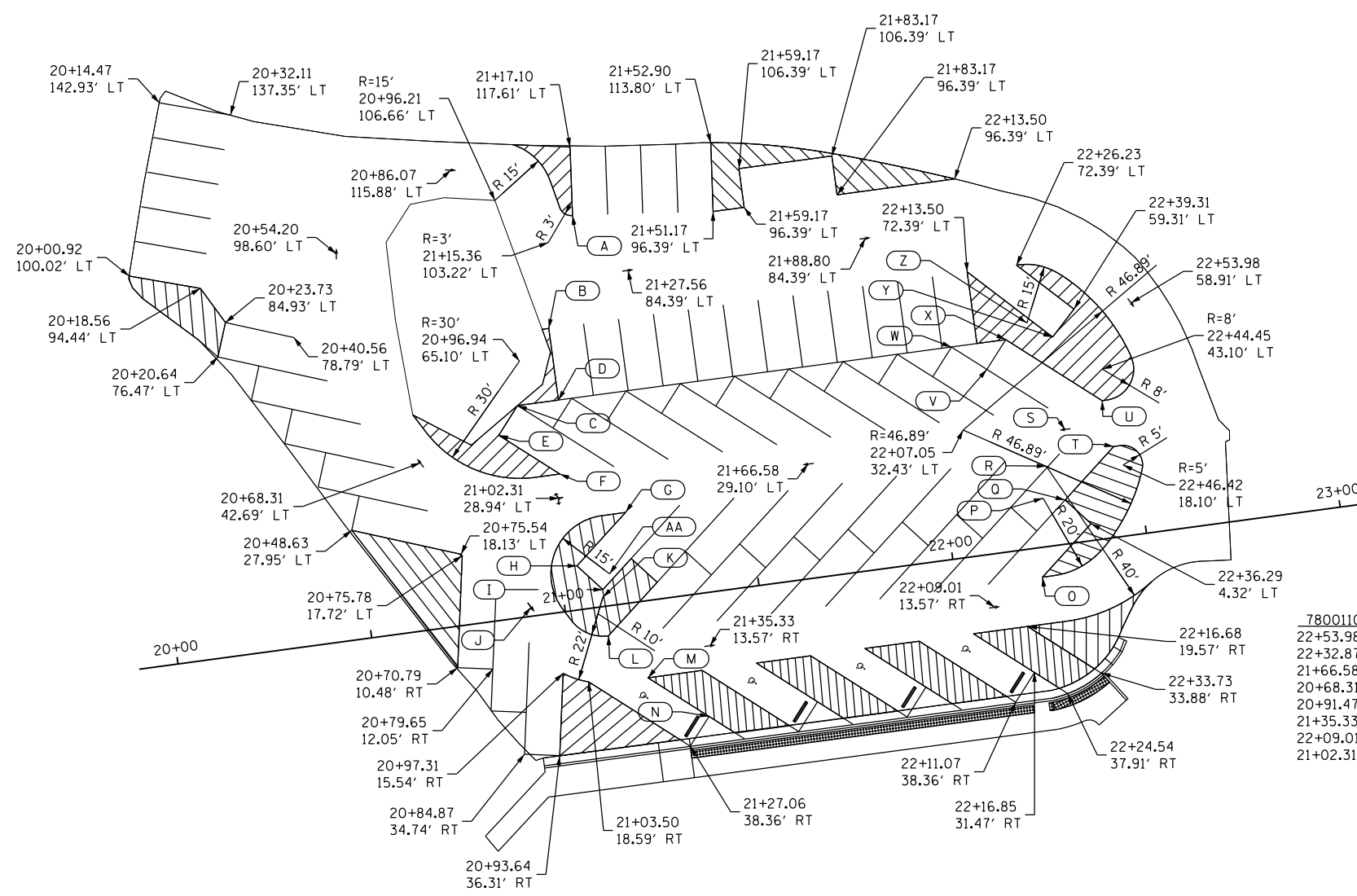
20+72.08, 54.16' RT	
22+39.15, 41.65' RT	136.7 SO YD

42400800 DETECTABLE WARNINGS

21+17.39, 39.47' RT	
22+34.41, 34.82' RT	229.3 SO FT

60608582 COMBINATION CONCRETE CURB AND GUTTER, TYPE M-4.24

20+89.40, 36.33' RT	
22+39.35, 25.42' RT	153.8 FOOT



CONTROL POINT #12  
N: 1747696.29  
E: 2184798.05  
ELEV = 667.96

CONTROL POINT #13  
N: 1747677.12  
E: 2184691.46  
ELEV = 669.15

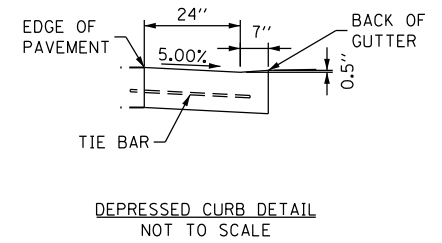
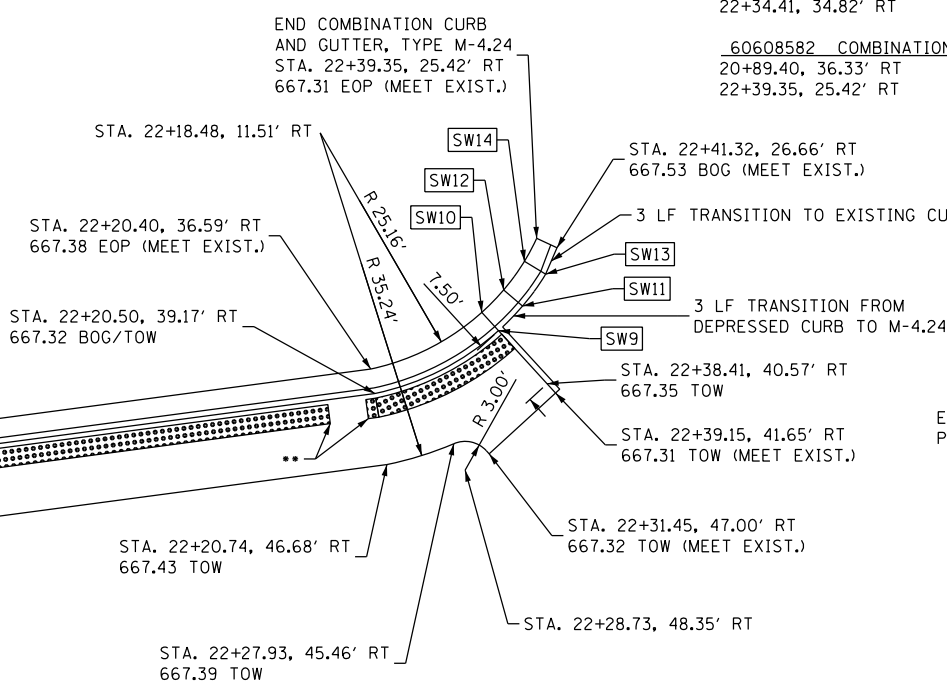
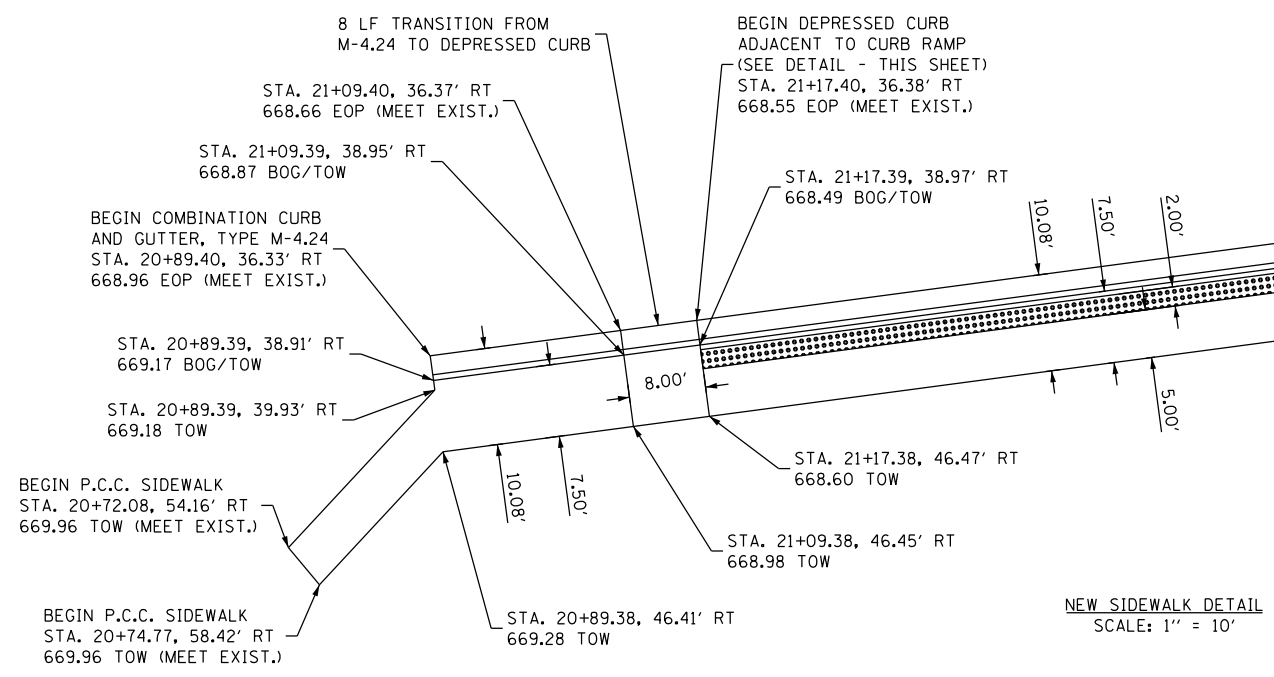
CONTROL POINT #5340  
N: 1747779.13  
E: 2184519.20  
ELEV = 681.85

STATION 20+00  
N: 1747661.0355  
E: 2184569.7139

STATION 21+00  
N: 1747674.4186  
E: 2184668.8143

STATION 22+00  
N: 1747687.8017  
E: 2184767.9148

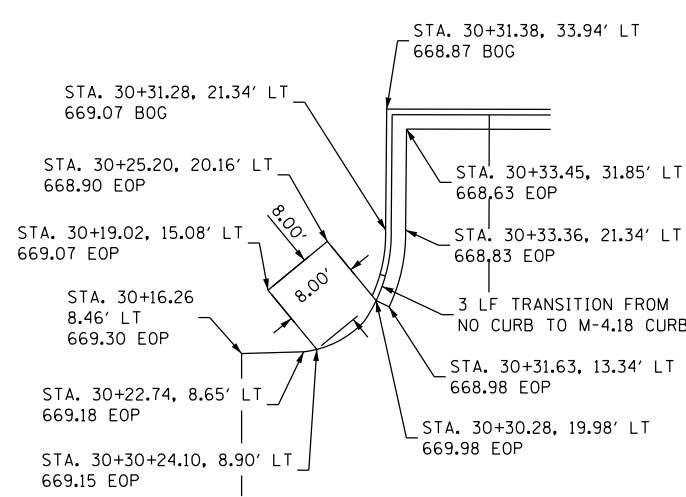
STATION 23+00  
N: 1747701.1847  
E: 2184867.0152



SIDEWALK CHART

No.	STATION	OFFSET	GRADE
SW9	22+34.13	34.41' RT	667.28 TOW / 667.57 TOC
SW10	22+32.65	32.29' RT	667.34 EOP (MEET EXIST.)
SW11	22+36.95	32.21' RT	667.54 BOG
SW12	22+35.23	30.28' RT	667.33 EOP (MEET EXIST.)
SW13	22+39.78	29.24' RT	667.53 BOG
SW14	22+37.77	27.61' RT	667.32 EOP (MEET EXIST.)

\*\* 4 LF GAP IN DETECTABLE WARNING  
STA. 22+15.47, 41.66' RT TO  
STA. 22+19.47, 41.67' RT



DUMPSTER PAD & WEST CURB DETAIL  
SCALE: 1" = 10'

CONCRETE PAVEMENT CHART (STAFF LOT)

No.	STATION	OFFSET	GRADE
P1	30+71.51	11.14' RT	670.22 EOP (MEET EXIST.)
P2	30+67.88	7.35' RT	669.59 EOP (MEET EXIST.)
P3	30+58.53	7.58' RT	669.40 EOP (MEET EXIST.)
P4	30+71.31	31.77' LT	668.05 EOP (MEET EXIST.)

PAVEMENT MARKING CHART (STAFF LOT)

No.	STATION	OFFSET
A	30+42.07	33.33' LT
B	30+42.03	14.83' LT
C	30+70.57	33.85' LT
D	30+70.53	14.77' LT

X0327308 PARKING LOT SEAL COAT

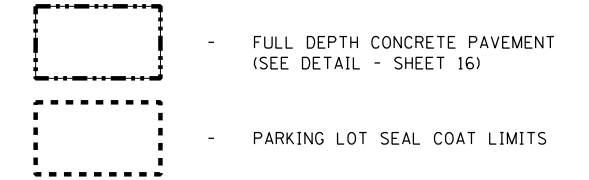
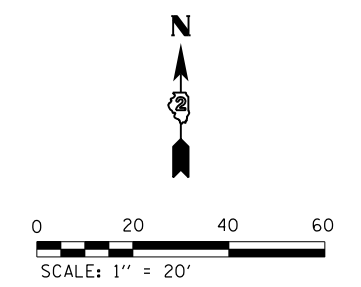
MUSEUM EAST LOT	416 GALLON
45100200 CRACK FILLING	1142 POUND
42000100 PORTLAND CEMENT CONCRETE PAVEMENT 6"	30+16.26 TO 30+91.11 291.1 SQ YD
42000300 PORTLAND CEMENT CONCRETE PAVEMENT 8"	30+19.02, 15.08' LT 30+30.28, 19.98' LT 7.7 SQ YD
35101600 AGGREGATE BASE COURSE, TYPE B 4"	30+16.26 TO 30+91.11 291.1 SQ YD 30+19.02 TO 30+30.28 7.7 SQ YD
42001200 PAVEMENT FABRIC	30+19.02, 15.08' LT 30+30.28, 19.98' LT 7.7 SQ YD
60608572 COMBINATION CONCRETE CURB AND GUTTER, TYPE M-4.18	30+31.63, 13.34' LT 30+71.31, 31.77' LT 56.6 FOOT

X0301430 PRECAST CONCRETE PARKING BLOCK

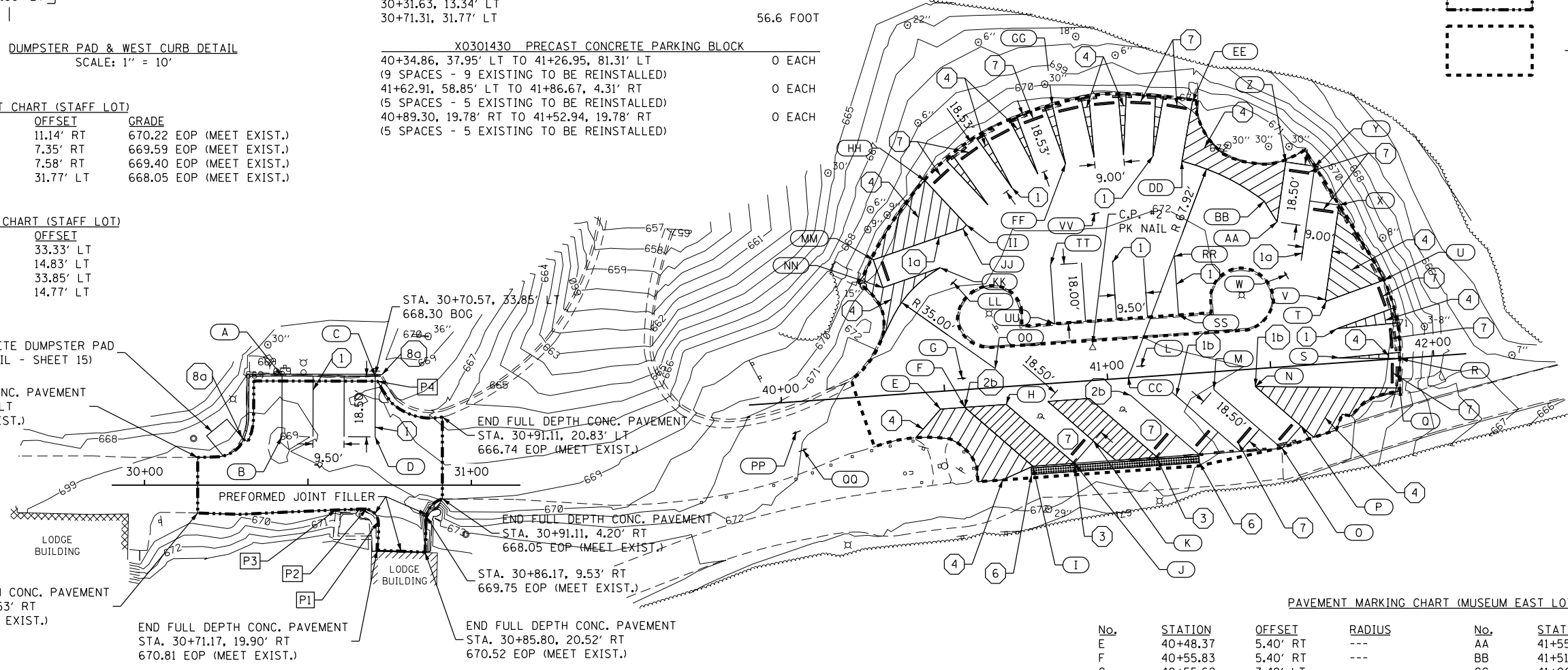
40+34.86, 37.95' LT TO 41+26.95, 81.31' LT (9 SPACES - 9 EXISTING TO BE REINSTALLED)	0 EACH
41+62.91, 58.85' LT TO 41+86.67, 4.31' RT (5 SPACES - 5 EXISTING TO BE REINSTALLED)	0 EACH
40+89.30, 19.78' RT TO 41+52.94, 19.78' RT (5 SPACES - 5 EXISTING TO BE REINSTALLED)	0 EACH

42400800 DETECTABLE WARNINGS

40+74.76, 25.35' RT	102.9 SQ FT
41+26.19, 25.35' RT	
78001110 PAINT PAVEMENT MARKING - LINE 4"	74.0 FOOT
STAFF PARKING LOT	1443.2 FOOT
MUSEUM EAST LOT	
78001130 PAINT PAVEMENT MARKING - LINE 6"	379.6 FOOT
MUSEUM EAST LOT	
78001100 PAINT PAVEMENT MARKING - LETTERS AND SYMBOLS	
40+78.75, 10.15' RT	3.1 SQ FT
41+04.00, 9.83' RT	3.1 SQ FT
40+03.85, 9.35' RT	6.5 SQ FT
40+05.59, 14.89' RT	6.5 SQ FT
40+55.62, 3.48' LT	6.5 SQ FT
41+10.50, 3.36' LT	6.5 SQ FT
41+56.78, 27.94' LT	6.5 SQ FT
40+99.71, 50.83' LT	6.5 SQ FT
40+55.03, 32.97' LT	6.5 SQ FT



- CONTROL POINT #1  
N: 1747505.99  
E: 2185234.51  
ELEV = 682.05
- CONTROL POINT #2  
N: 1747681.98  
E: 2185606.24  
ELEV = 672.17
- STATION 30+00  
N: 1747639.9885  
E: 2185316.2109
- STATION 31+00  
N: 1747639.9885  
E: 2185416.2109
- STATION 40+00  
N: 1747665.1541  
E: 2185511.0785
- STATION 41+00  
N: 1747672.2965  
E: 2185610.8231
- STATION 42+00  
N: 1747679.4390  
E: 2185710.5677

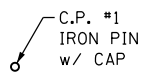


PAVEMENT MARKING CHART (MUSEUM EAST LOT)

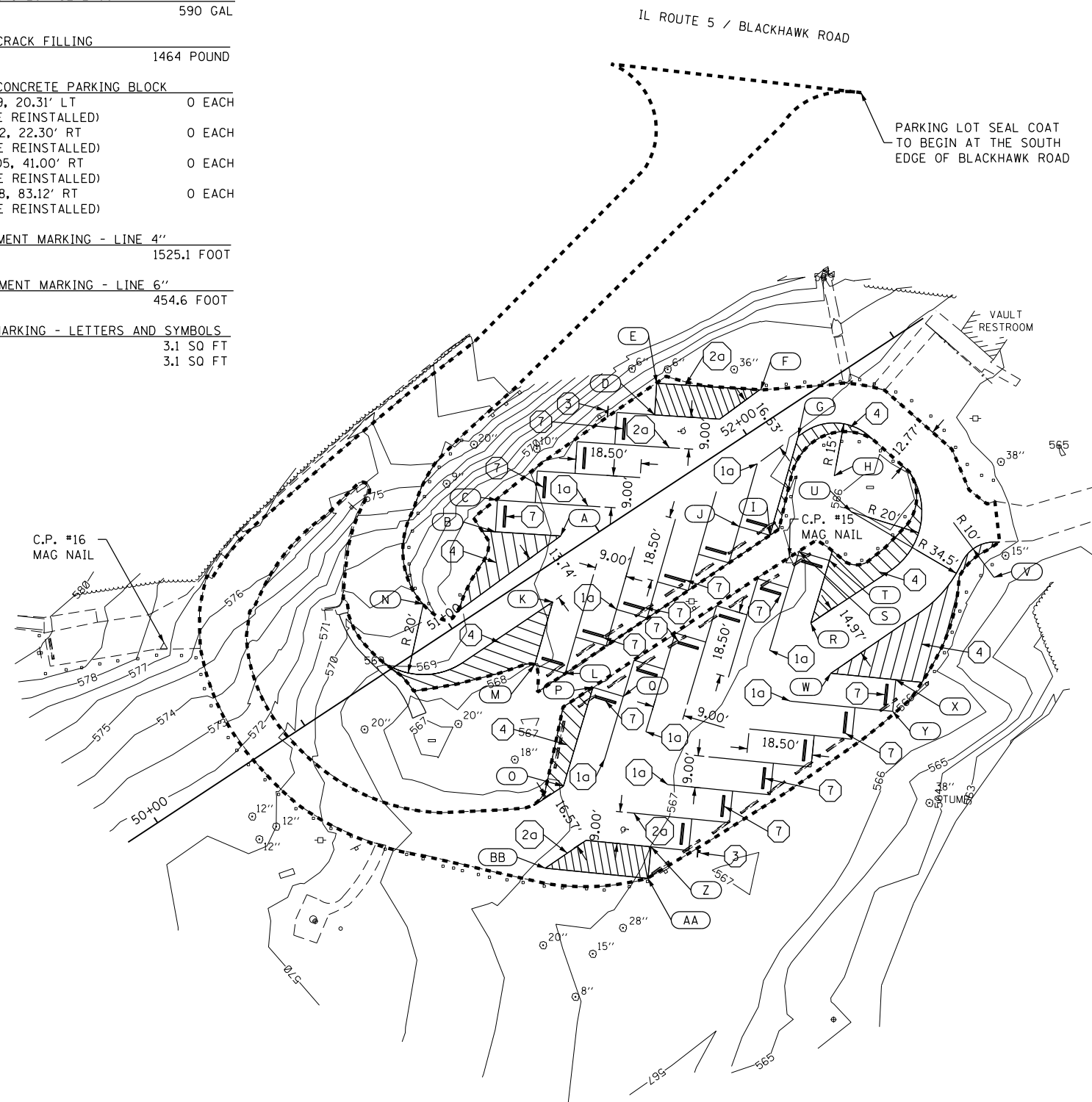
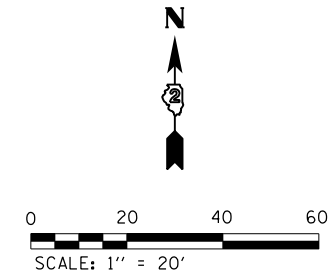
No.	STATION	OFFSET	RADIUS	No.	STATION	OFFSET	RADIUS
E	40+48.37	5.40' RT	---	AA	41+55.15	44.33' LT	---
F	40+55.83	5.40' RT	---	BB	41+51.68	50.93' LT	R=67.92'
G	40+55.62	3.48' LT	---	CC	41+06.39	0.31' LT	R=67.92'
H	40+68.56	5.40' RT	---	DD	41+27.43	64.90' LT	R=67.92'
I	40+75.28	24.85' RT	---	EE	41+31.98	82.86' LT	R=86.42'
J	40+88.01	24.85' RT	---	FF	40+91.86	66.66' LT	R=67.92'
K	40+94.37	18.48' RT	---	GG	40+89.11	84.99' LT	R=86.42'
L	41+10.50	3.36' LT	---	HH	40+48.65	64.61' LT	R=86.42'
M	41+32.20	5.40' RT	---	II	40+60.30	50.20' LT	R=67.92'
N	41+44.93	5.40' RT	---	JJ	40+59.16	49.12' LT	R=67.92'
O	41+51.65	24.85' RT	---	KK	40+51.32	37.70' LT	---
P	41+58.01	18.48' RT	---	LL	40+55.03	32.97' LT	---
Q	41+88.96	9.01' RT	---	MM	40+31.12	41.61' LT	---
R	41+89.70	0.04' RT	---	NN	40+33.44	32.92' LT	---
S	41+71.26	1.47' LT	---	OO	40+65.94	5.79' LT	R=35.00'
T	41+68.42	19.06' LT	---	PP	40+03.85	9.35' RT	---
U	41+86.51	24.24' LT	---	QQ	40+05.59	14.89' RT	---
V	41+68.17	19.54' LT	---	RR	41+23.07	36.07' LT	---
W	41+56.78	27.94' LT	---	SS	41+23.06	18.07' LT	---
X	41+74.39	48.10' LT	---	TT	40+85.07	36.11' LT	---
Y	41+67.88	60.49' LT	---	UU	40+85.06	18.11' LT	---
Z	41+59.09	62.41' LT	---	VV	40+99.71	50.83' LT	---

KEYNOTES  
(SEE SITE DETAILS - SHEETS 16-17)

- 1 - 90° PARKING STRIPING, WHITE (4")
- 1a - 40° PARKING STRIPING, WHITE (4")
- 1b - 45° PARKING STRIPING, WHITE (4")
- 2b - 45° HANDICAPPED PARKING STRIPING, YELLOW (6")
- 3 - HANDICAPPED PARKING SIGN
- 4 - 4" DIAGONAL STRIPE, WHITE (30" O.C.)
- 5 - PORTLAND CEMENT CONCRETE SIDEWALK, 5"
- 6 - DETECTABLE WARNING
- 7 - PRECAST CONCRETE PARKING BLOCK
- 8a - COMBINATION CONCRETE CURB AND GUTTER, TYPE M-4.18



X0327308 PARKING LOT SEAL COAT		
ROCK RIVER LOT		590 GAL
45100200 CRACK FILLING		
ROCK RIVER LOT		1464 POUND
X0301430 PRECAST CONCRETE PARKING BLOCK		
51+30.24, 18.18' LT TO 51+72.19, 20.31' LT		0 EACH
(4 SPACES - 4 EXISTING TO BE REINSTALLED)		
51+18.91, 23.06' RT TO 51+88.92, 22.30' RT		0 EACH
(6 SPACES - 6 EXISTING TO BE REINSTALLED)		
51+25.04, 41.00' RT TO 51+95.05, 41.00' RT		0 EACH
(6 SPACES - 6 EXISTING TO BE REINSTALLED)		
51+22.17, 84.26' RT TO 51+92.18, 83.12' RT		0 EACH
(6 SPACES - 6 EXISTING TO BE REINSTALLED)		
78001110 PAINT PAVEMENT MARKING - LINE 4"		
ROCK RIVER LOT		1525.1 FOOT
78001130 PAINT PAVEMENT MARKING - LINE 6"		
ROCK RIVER LOT		454.6 FOOT
78001100 PAINT PAVEMENT MARKING - LETTERS AND SYMBOLS		
51+85.34, 11.18' LT		3.1 SQ FT
51+09.35, 74.68' RT		3.1 SQ FT



PAVEMENT MARKING CHART (ROCK RIVER LOT)

No.	STATION	OFFSET	RADIUS
A	51+40.15	5.04' LT	---
B	51+25.40	16.19' LT	---
C	51+30.82	23.37' LT	---
D	51+81.33	19.04' LT	---
E	51+86.76	26.22' LT	---
F	52+10.07	8.59' LT	---
G	52+12.01	8.42' RT	---
H	52+14.35	23.40' RT	R=15'
I	51+89.83	27.44' RT	---
J	51+83.96	20.62' RT	---
K	51+28.00	9.34' RT	---
L	51+19.82	28.21' RT	---
M	51+13.96	21.38' RT	---
N	50+97.05	10.33' LT	R=20'
O	51+01.80	54.62' RT	---
P	51+24.19	35.84' RT	---
Q	51+29.98	42.73' RT	---
R	51+85.81	54.62' RT	---
S	51+94.20	35.84' RT	---
T	51+99.98	42.73' RT	---
U	52+12.75	34.62' RT	R=20' & R=34.5'
V	52+36.32	72.37' RT	---
W	51+82.72	69.65' RT	---
X	51+97.08	81.31' RT	---
Y	51+91.41	88.30' RT	---
Z	51+13.08	82.67' RT	---
AA	51+07.41	89.66' RT	---
BB	50+84.72	71.24' RT	---

CONTROL POINT #15  
 N: 1747635.3700  
 E: 2187033.7200  
 ELEV = 567.07

CONTROL POINT #16  
 N: 1747610.9900  
 E: 2186856.3600  
 ELEV = 577.23

STATION 50+00  
 N: 1747561.0394  
 E: 2186854.5654

STATION 51+00  
 N: 1747616.0716  
 E: 2186938.0606

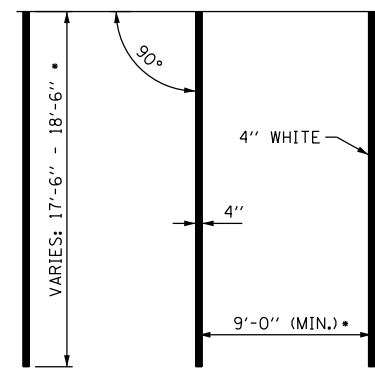
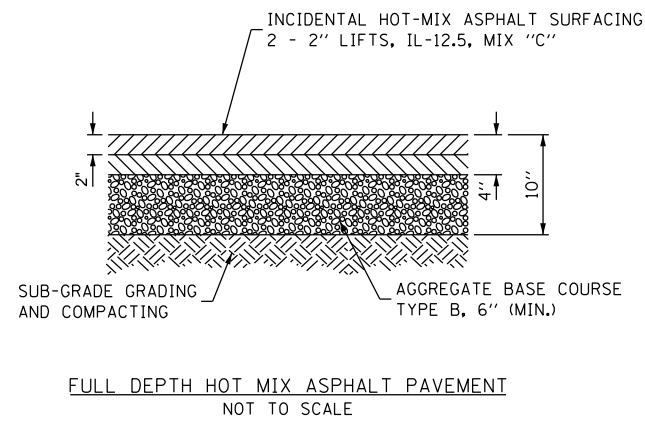
STATION 52+00  
 N: 1747671.1039  
 E: 2187021.5558

**\*PARKING BLOCK NOTE**  
 EXISTING PARKING BLOCKS THAT HAVE PREVIOUSLY BEEN REMOVED AND SALVAGED SHALL BE USED FIRST IN REINSTALLING PARKING BLOCKS. ANY PARKING BLOCKS MISSING OR DEEMED UNSALVAGABLE SHALL BE REPLACED WITH NEW PRECAST CONCRETE PARKING BLOCKS.

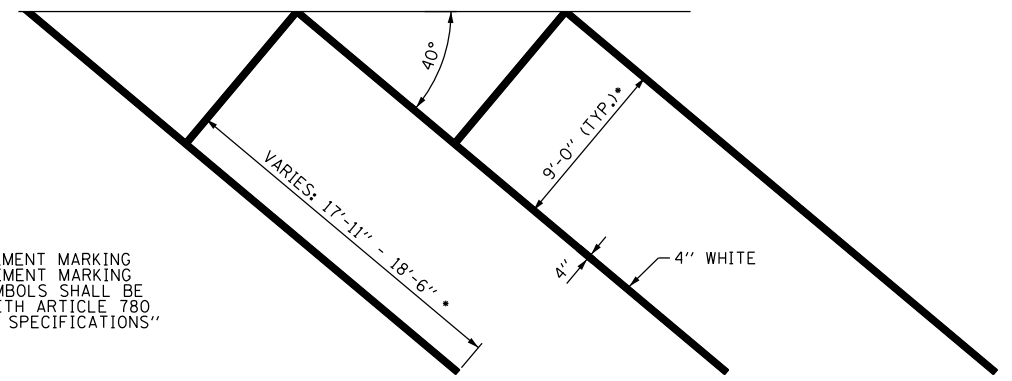
**KEYNOTES**  
 (SEE SITE DETAILS - SHEETS 16-17)

- 1a - 40° PARKING STRIPING, WHITE (4")
- 2a - 40° HANDICAPPED PARKING STRIPING, YELLOW (6")
- 3 - HANDICAPPED PARKING SIGN
- 4 - 4" DIAGONAL STRIPE, WHITE (30" O.C.)
- 7 - PRECAST CONCRETE PARKING BLOCK\*



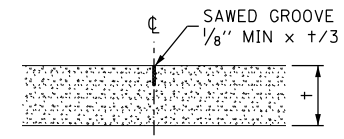
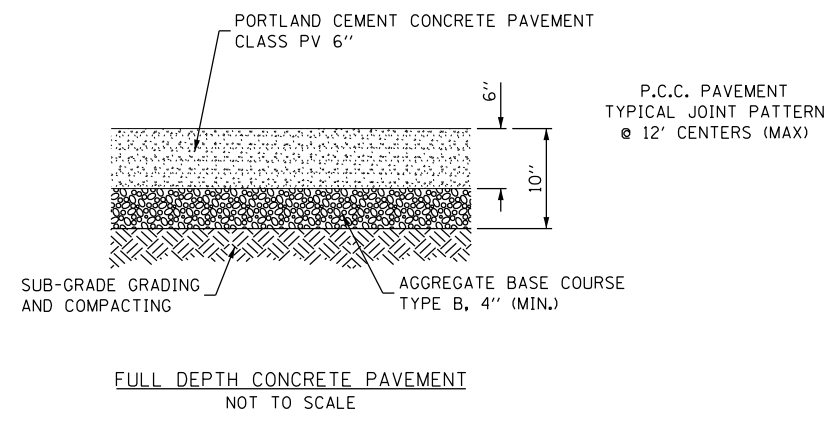


① 90° PARKING STRIPING, WHITE (4")  
NOT TO SCALE

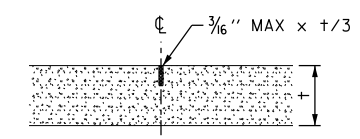


①a 40° PARKING STRIPING, WHITE (4")  
NOT TO SCALE

ALL PAINT PAVEMENT MARKING  
AND PAINT PAVEMENT MARKING  
LETTERS AND SYMBOLS SHALL BE  
IN ACCORDANCE WITH ARTICLE 780  
OF THE "STANDARD SPECIFICATIONS"

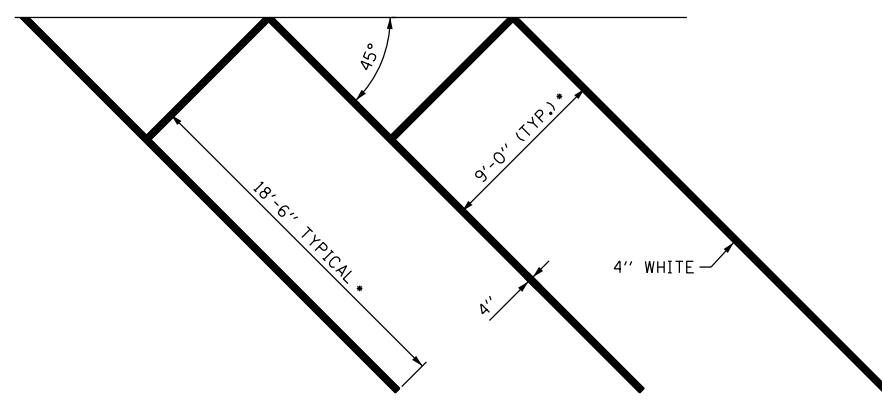
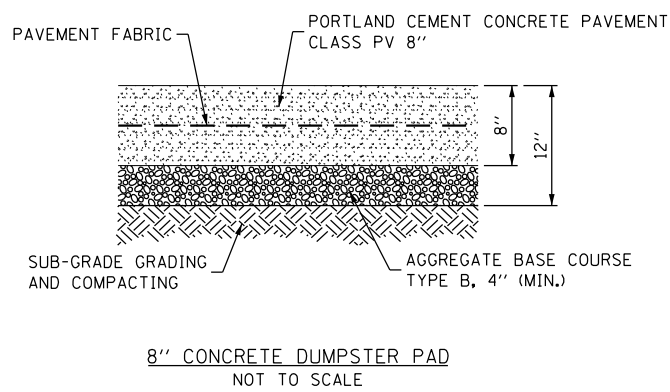


LONGITUDINAL SAWED JOINT  
NOT TO SCALE



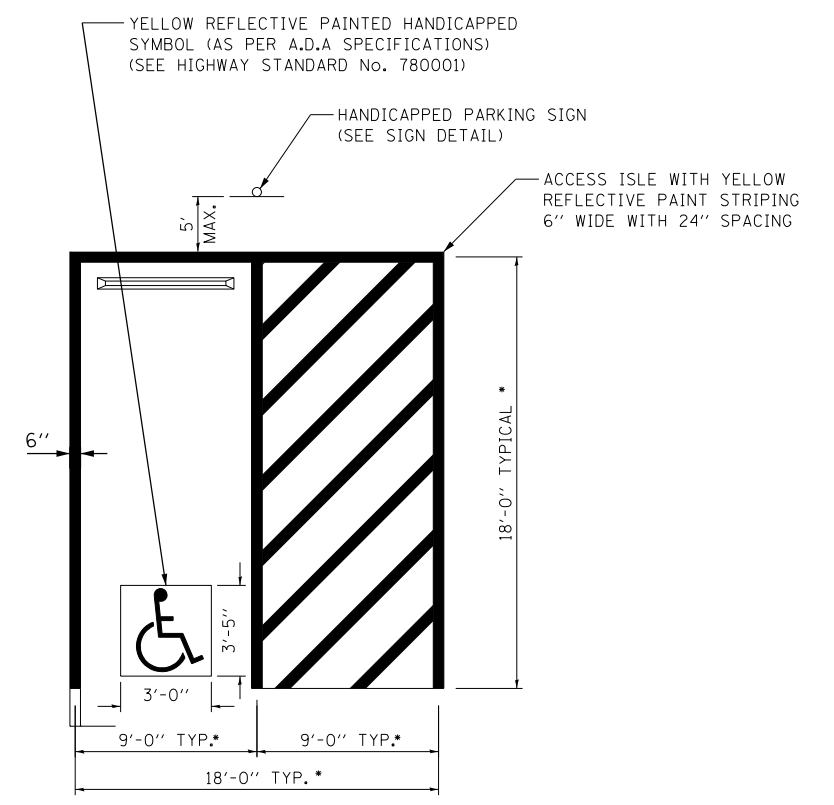
TRANSVERSE CONTRACTION JOINT  
NOT TO SCALE

ALL PAINT PAVEMENT MARKING  
AND PAINT PAVEMENT MARKING  
LETTERS AND SYMBOLS SHALL BE  
IN ACCORDANCE WITH ARTICLE 780  
OF THE "STANDARD SPECIFICATIONS"



①b 45° PARKING STRIPING, WHITE (4")  
NOT TO SCALE

• SEE PLANS TO VERIFY DIMENSIONS



② 90° HANDICAPPED PARKING STRIPING, YELLOW (6")  
NOT TO SCALE

• SEE PLANS TO VERIFY DIMENSIONS

FILE NAME =	USER NAME = SteveK	DESIGNED - R.H.D./D.R.C.	REVISED -
S:\CAD Drawings\CAD Drawings\250\250-141-C Black Hawk\C-COVR.dgn		DRAWN - D.R.C.	REVISED -
Default	PLOT SCALE = 40.0000' / in.	CHECKED - R.H.D.	REVISED -
	PLOT DATE = 12/21/2015	DATE - DEC. 18, 2015	REVISED -

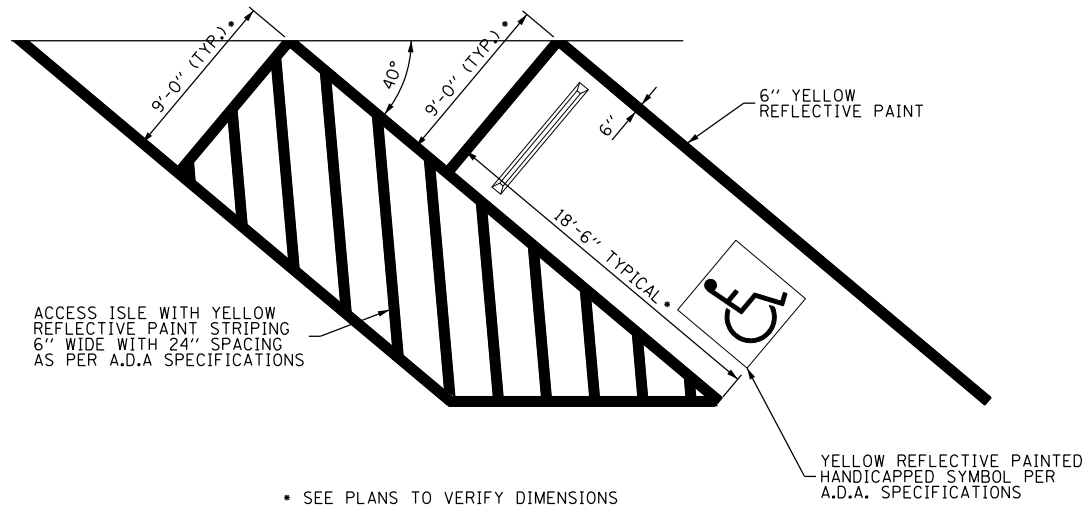
STATE OF ILLINOIS  
DEPARTMENT OF TRANSPORTATION

TYPICAL SECTIONS AND SITE DETAILS			
BLACK HAWK STATE HISTORICAL SITE			
SCALE: N/A	SHEET 16 OF 18 SHEETS	STA. N/A	TO STA. N/A

F.A. RTE.	SECTION	COUNTY	TOTAL SHEETS	SHEET NO.
	PARK ROADS 2016-01	ROCK ISLAND	18	16
CONTRACT NO. 46398				
ILLINOIS FED. AID PROJECT				

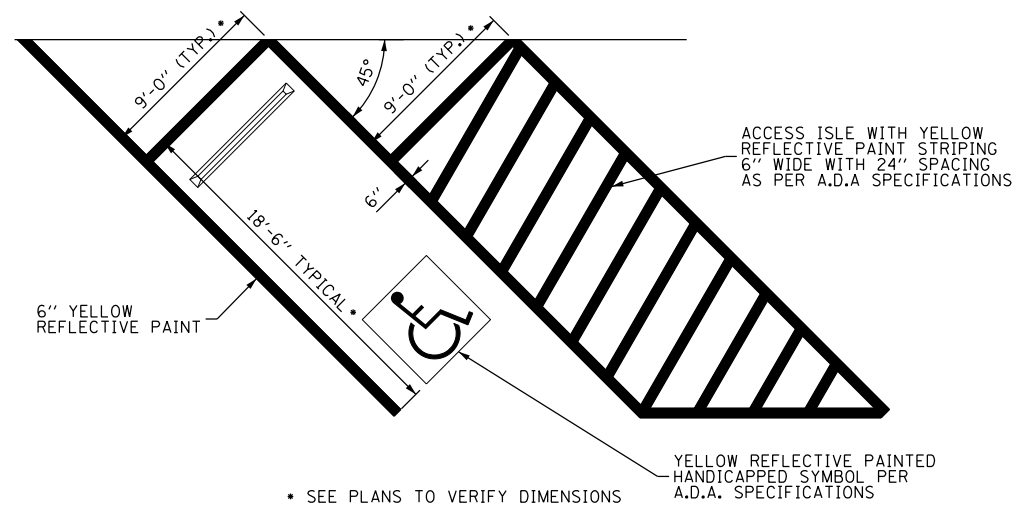


ALL PAINT PAVEMENT MARKING AND PAINT PAVEMENT MARKING LETTERS AND SYMBOLS SHALL BE IN ACCORDANCE WITH ARTICLE 780 OF THE "STANDARD SPECIFICATIONS"



2a 40° HANDICAPPED PARKING STRIPING, YELLOW (6") NOT TO SCALE

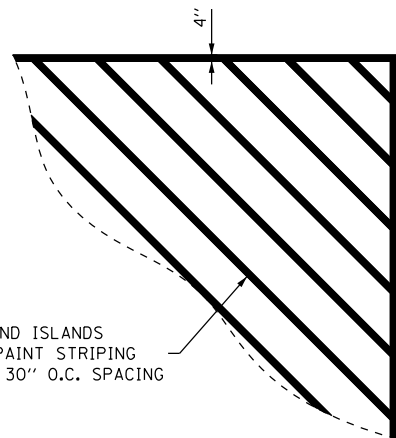
ALL PAINT PAVEMENT MARKING AND PAINT PAVEMENT MARKING LETTERS AND SYMBOLS SHALL BE IN ACCORDANCE WITH ARTICLE 780 OF THE "STANDARD SPECIFICATIONS"



2b 45° HANDICAPPED PARKING STRIPING, YELLOW (6") NOT TO SCALE

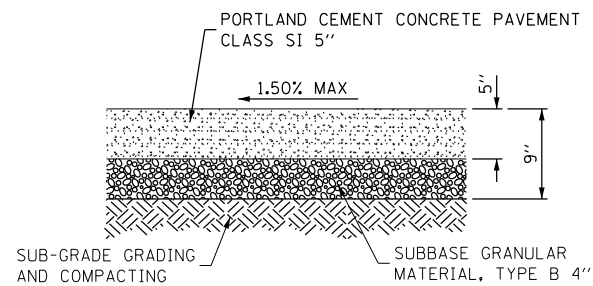
SEE DISTRICT 2 STANDARD No. 44.2 (SHEET No. 17)

3 HANDICAPPED PARKING SIGNS NOT TO SCALE



CROSSWALK AND ISLANDS WITH WHITE PAINT STRIPING 4" WIDE AND 30" O.C. SPACING

4 4" DIAGONAL STRIPE, WHITE (30" O.C.) NOT TO SCALE

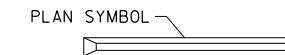


5 PORTLAND CEMENT CONCRETE SIDEWALK, 5" NOT TO SCALE

SEE SPECIAL PROVISIONS

6 DETECTABLE WARNING NOT TO SCALE

SEE DISTRICT 2 STANDARD No. 31.4 (SHEET No. 17)



7 PRECAST CONCRETE PARKING BLOCK NOT TO SCALE

SEE HIGHWAY STANDARD No. 606001-06

8 COMBINATION CONCRETE CURB AND GUTTER, TYPE M-4.24 NOT TO SCALE

8a COMBINATION CONCRETE CURB AND GUTTER, TYPE M-4.18 NOT TO SCALE

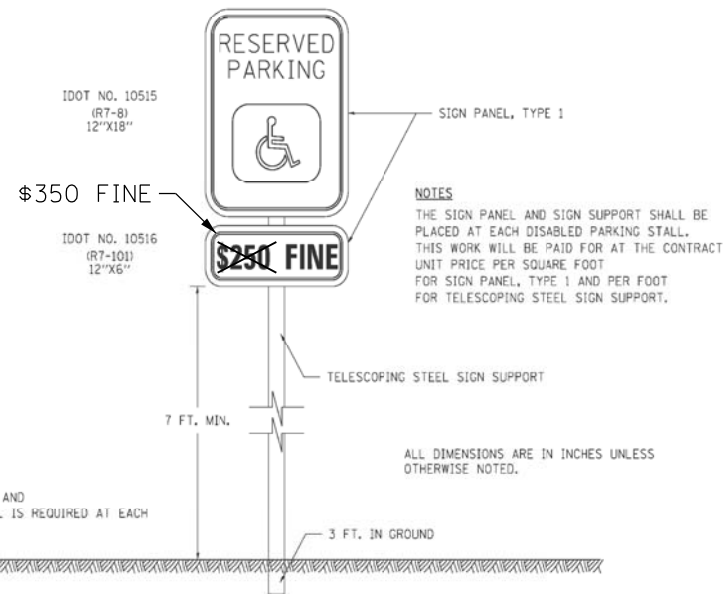
FILE NAME =	USER NAME = SteveK	DESIGNED - R.H.D./D.R.C.	REVISED -
S:\CAD Drawings\CAD Drawings\CAD Drawings\250\250-141-C Black Hawk\C-COVR.dgn		DRAWN - D.R.C.	REVISED -
Default	PLOT SCALE = 40.0000' / in.	CHECKED - R.H.D.	REVISED -
	PLOT DATE = 12/21/2015	DATE - DEC. 18, 2015	REVISED -

STATE OF ILLINOIS  
DEPARTMENT OF TRANSPORTATION

SITE DETAILS (CONTINUED)			
F.A. RTE.	SECTION	COUNTY	TOTAL SHEETS
	PARK ROADS 2016-01	ROCK ISLAND	18
			17
CONTRACT NO. 46398			
SCALE: N/A	SHEET 17 OF 18 SHEETS	STA. N/A	TO STA. N/A

ILLINOIS	FED. AID PROJECT
----------	------------------

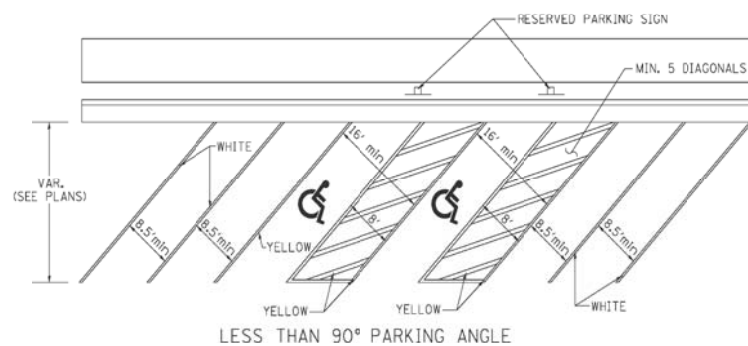
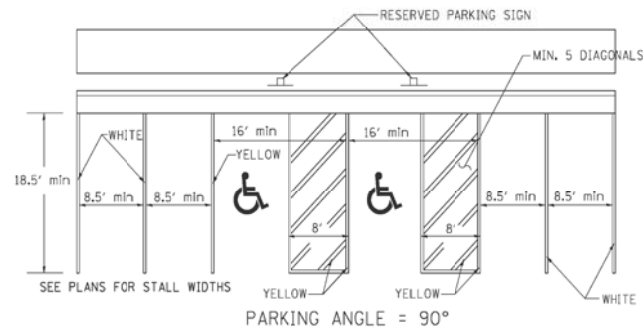
# RESERVED PARKING SIGN DETAIL



**QUANTITIES**  
12 FT. OF SIGN SUPPORT AND  
2 SQ. FT. OF SIGN PANEL IS REQUIRED AT EACH  
LOCATION.

ALL DIMENSIONS ARE IN INCHES UNLESS  
OTHERWISE NOTED.

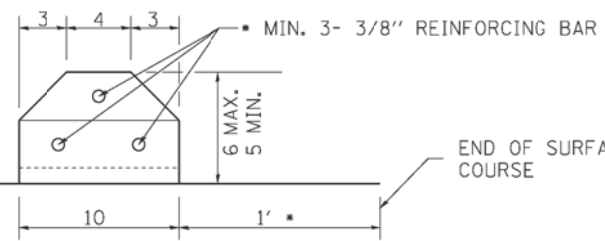
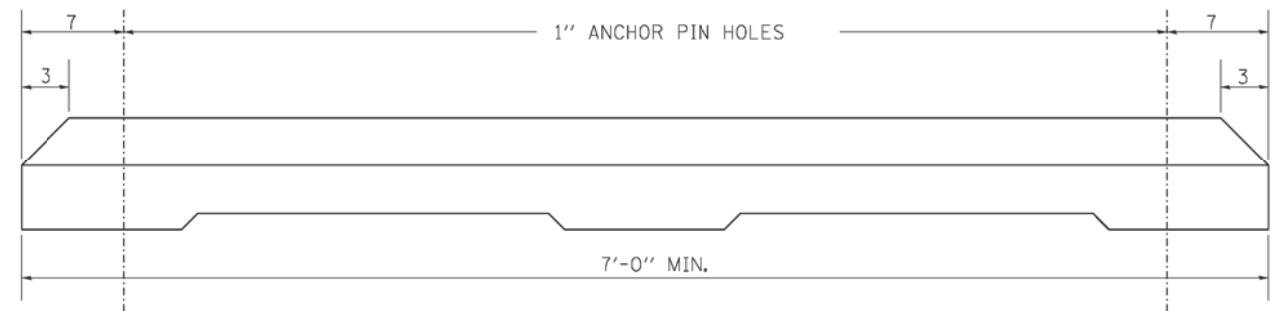
## DISABLED PARKING STRIPING



REVIS	6-27-14								
REVIS	10-14-11								
REVIS	-								
REVIS	-								

**REGION 2 / DISTRICT 2 STANDARD** 44.2

# PARKING BLOCKS



END OF SURFACE COURSE  
OR AS DIRECTED BY THE ENGINEER.

## GENERAL NOTES

CLASS SI CONCRETE SHALL BE USED THROUGHOUT.  
ANCHOR PINS SHALL BE 3/4 DIAMETER, 36 LONG.  
THE COST OF THE MATERIAL, LABOR AND EQUIPMENT NECESSARY TO INSTALL THE PARKING BLOCKS WITH ANCHOR PINS SHALL BE INCLUDED IN THE CONTRACT UNIT PRICE PER EACH FOR PARKING BLOCKS.  
ALL DIMENSIONS ARE IN INCHES UNLESS OTHERWISE NOTED.

PLOT DATE = Apr-16-2015 09:55:48 AM

REVIS	10-03-11								
REVIS	-								
REVIS	-								
REVIS	-								

**REGION 2 / DISTRICT 2 STANDARD**

SCALE: 1:0000 ' / in. SHEET NO. OF SHEETS STA. TO STA.

F.A. RTE.	SECTION	COUNTY	TOTAL SHEETS	SHEET NO.
CONTRACT NO.				
FED. ROAD DIST. NO.			ILLINOIS FED. AID PROJECT	

**PARKING BLOCKS 31.4**

FILE NAME =	USER NAME = SteveK	DESIGNED - R.H.D./D.R.C.	REVIS -
S:\CAD Drawings\CAD Drawings\250\250-141-C Black Hawk\C-COVR.dgn		DRAWN - D.R.C.	REVIS -
Default	PLOT SCALE = 40.0000 ' / in.	CHECKED - R.H.D.	REVIS -
	PLOT DATE = 12/21/2015	DATE - DEC. 18, 2015	REVIS -

**STATE OF ILLINOIS  
DEPARTMENT OF TRANSPORTATION**

<b>DISTRICT 2 STANDARDS</b>			
<b>BLACK HAWK STATE HISTORICAL SITE</b>			
SCALE: N/A	SHEET 18 OF 18 SHEETS	STA. N/A TO STA. N/A	

F.A. RTE.	SECTION	COUNTY	TOTAL SHEETS	SHEET NO.
	PARK ROADS 2016-01	ROCK ISLAND	18	18
CONTRACT NO. 46398				
ILLINOIS FED. AID PROJECT				