

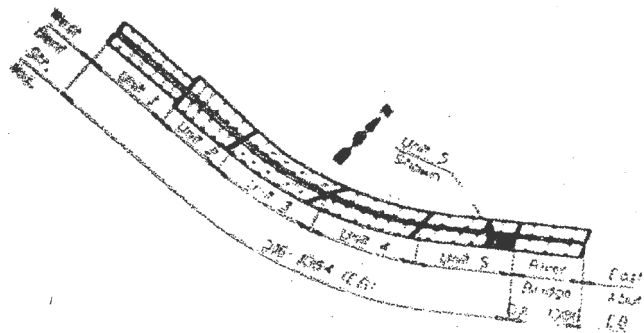
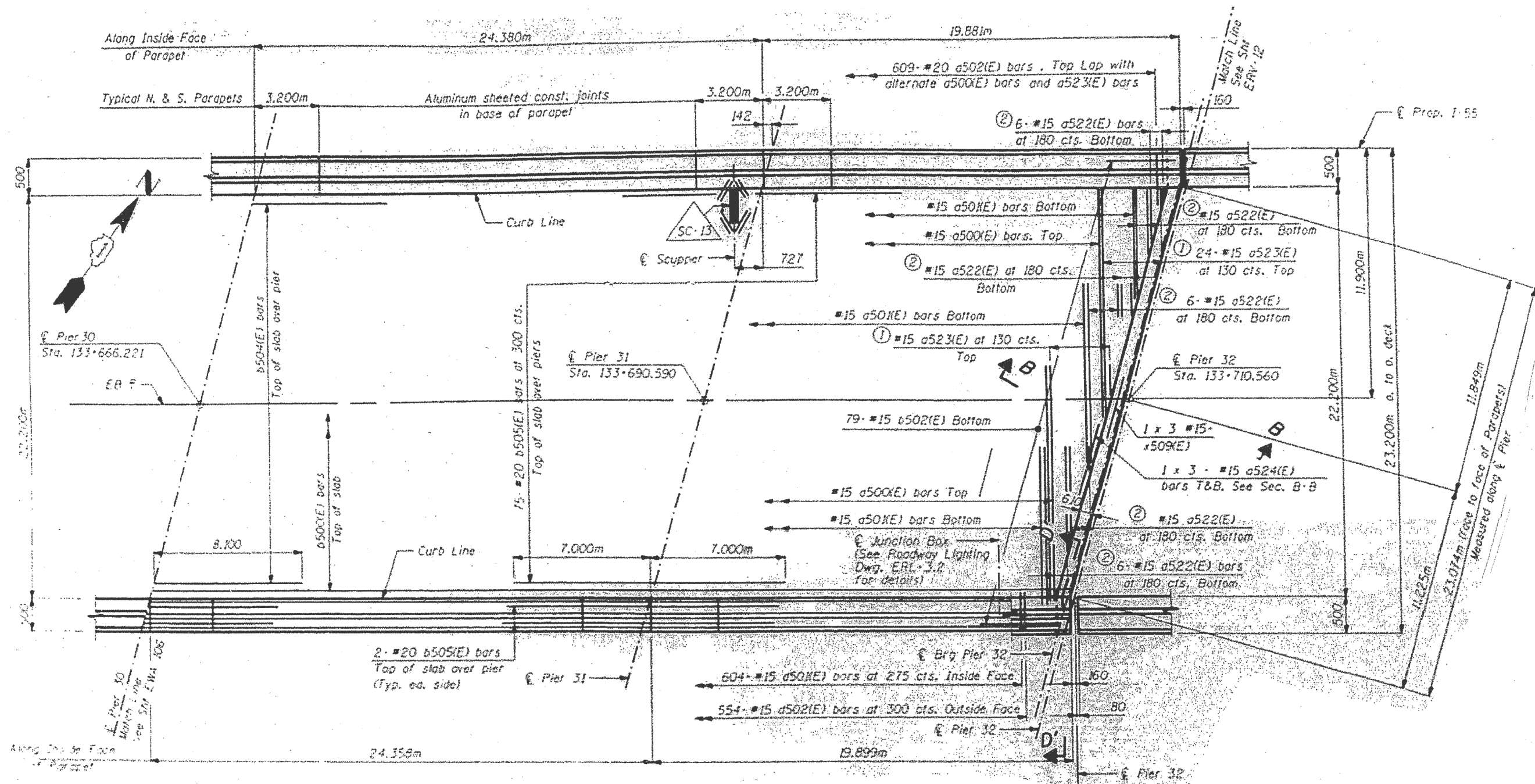
**FOR INFORMATION ONLY**

FILE NAME :	USER NAME : gorenautob	DESIGNED -	REVISED -	STATE OF ILLINOIS DEPARTMENT OF TRANSPORTATION	EXISTING PLANS, LOCATION 5. SN 016-1084 (EB)	F.A.I. RTE.:	SECTION	COUNTY	TOTAL SHEETS	SHEET NO.	
p:\11084EBID\INTEG\illinois.gov\FWIDOT\Documents\IDOT Offices\District 1\Projects\1084EBID\Design\1084EBID-sh1-plan02.dgn		REVISOR -	REVISED -			55	2015-0711	COOK	117	103	
PLOT SCALE = 100.0000 / 1m.		CHECKED -	REVISED -			CONTRACT NO. 62B55					
Default		DATE -	REVISED -			SCALE:	SHEET 18 OF 21 SHEETS	STA.	TO STA.	ILLINOIS FED. AID PROJECT	



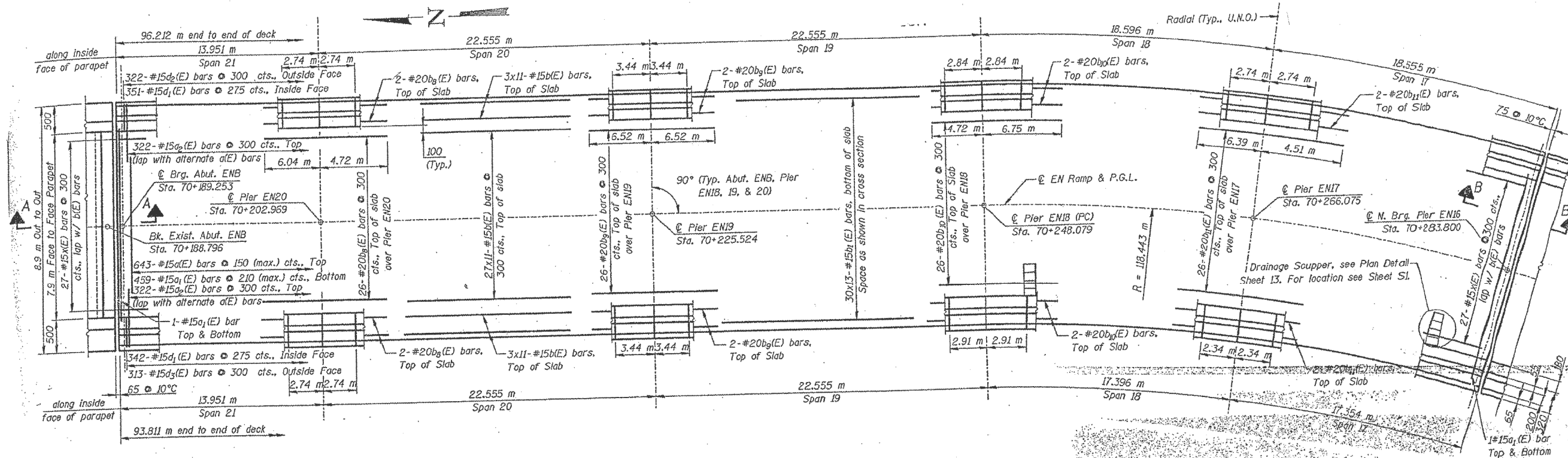




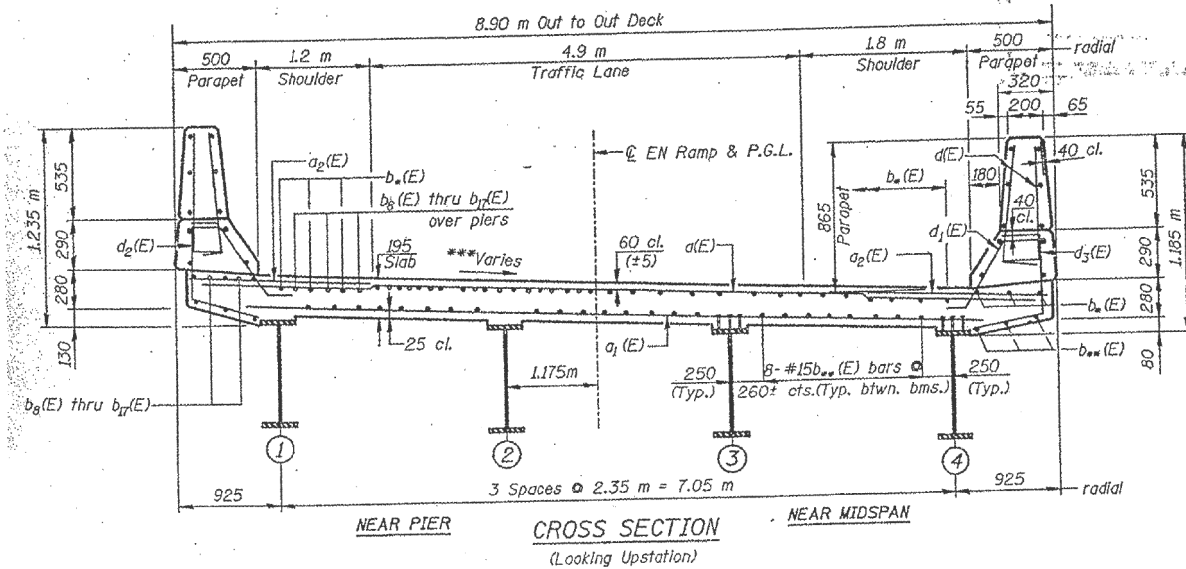


**FOR INFORMATION ONLY**

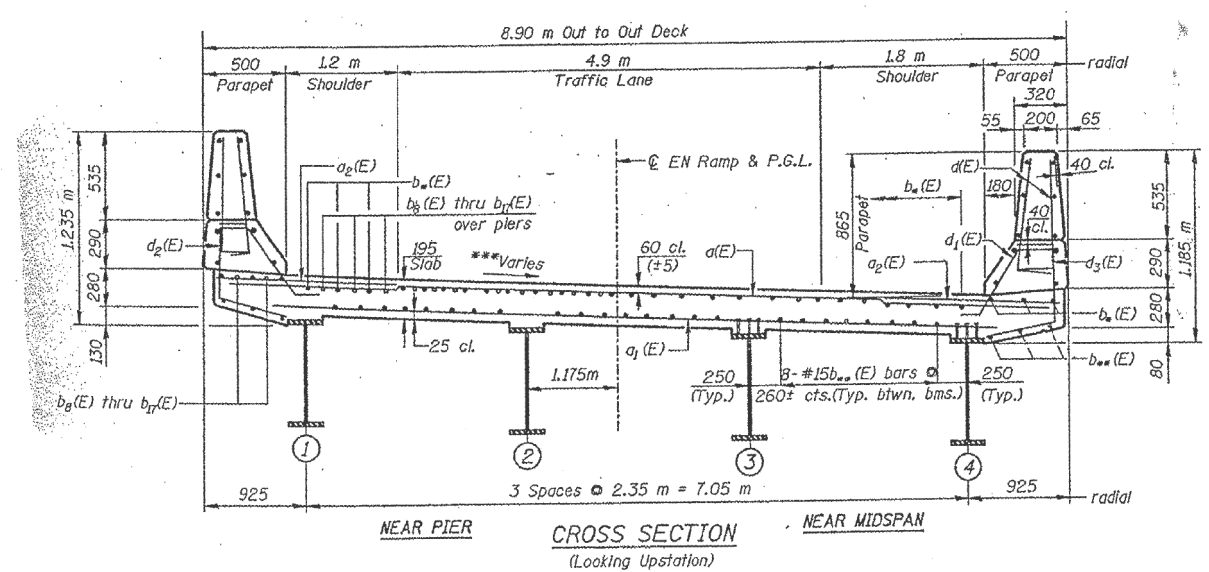
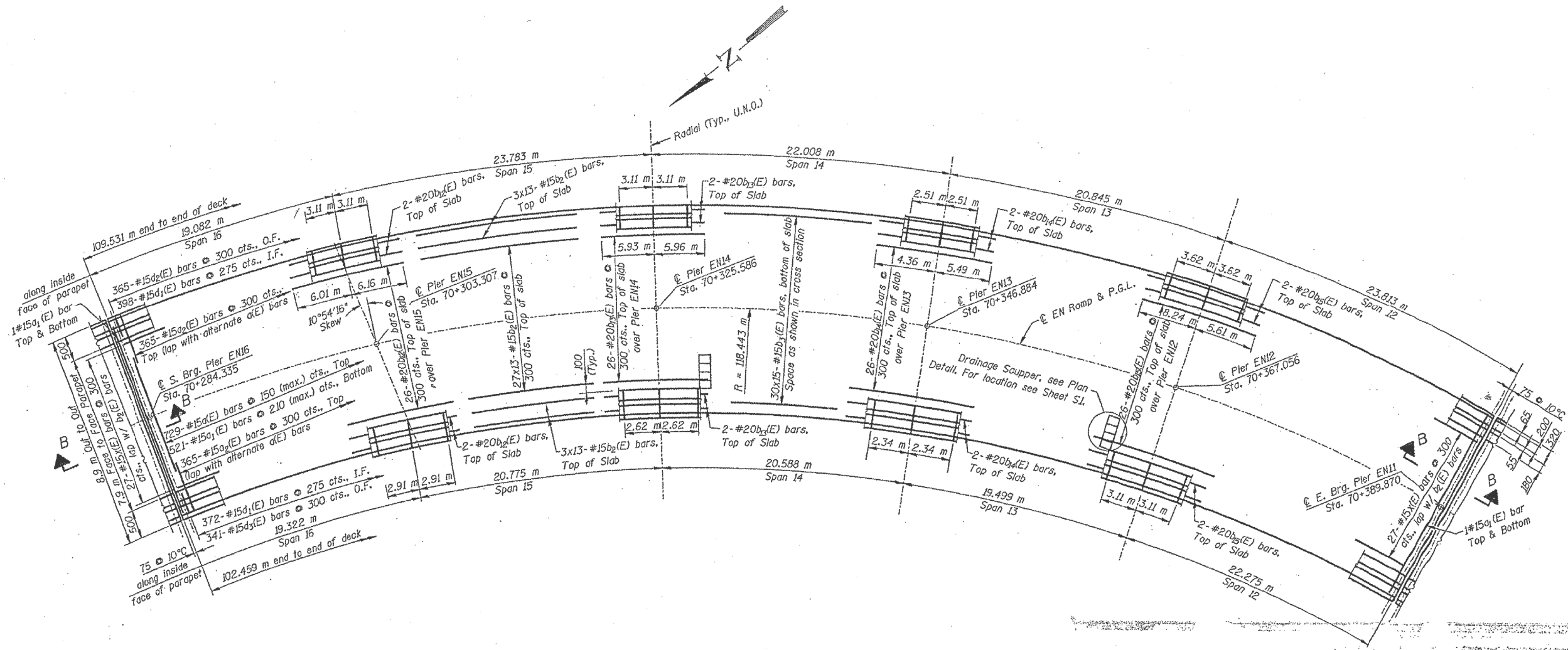
FILE NAME =	USER NAME = gorenautab	DESIGNED -	REVISED -	<b>STATE OF ILLINOIS DEPARTMENT OF TRANSPORTATION</b>	<b>EXISTING PLANS, LOCATION 5. SN 016-1084 (EB)</b>	F.A.I. RTE. =	SECTION	COUNTY	TOTAL SHEETS	SHEET NO.
pw\11084EBID\INTEG\illinois.gov\PIWID\Documents\DOT Offices\District 1\Projects\1084EB\Design\0161084-eb-pln02.dgn		REVISED -	REVISED -			55	2015-0711	COOK	117	106
PLOT SCALE = 100.0000' / 1" =	CHECKED -	REVISED -	REVISED -			CONTRACT NO. 62B55				
Default	PLOT DATE = 12/8/2015	DATE -	REVISED -			SCALE:	SHEET 21 OF 21 SHEETS	STA.	TO STA.	ILLINOIS FED. AID PROJECT



**FOR INFORMATION ONLY**



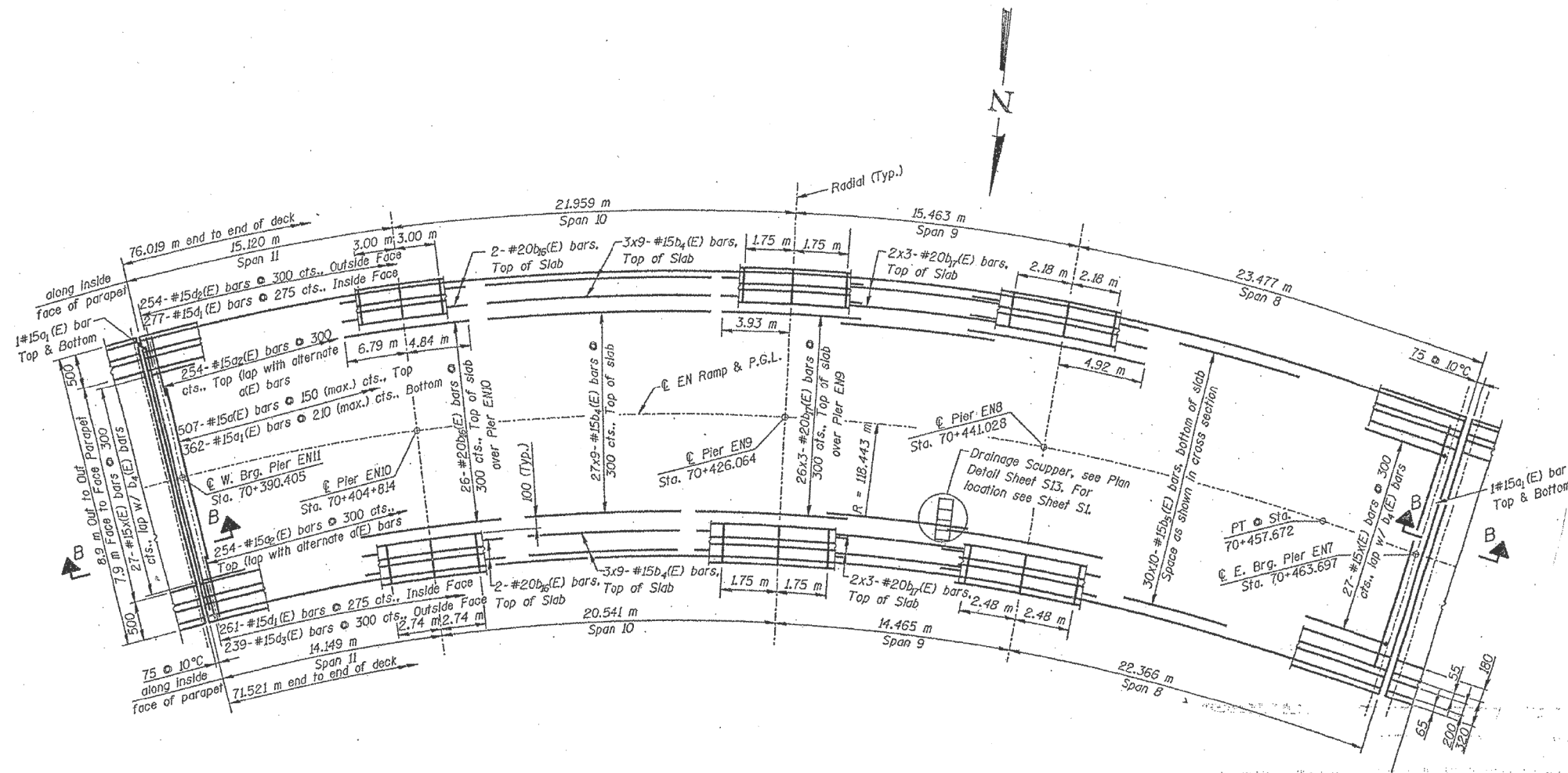
FILE NAME :	USER NAME : gorenautab	DESIGNED -	REVISED -	<b>STATE OF ILLINOIS DEPARTMENT OF TRANSPORTATION</b>	<b>EXISTING PLANS. LOCATION 6. SN 016-1056 (EB)</b>			F.A.I. RTE.	SECTION	COUNTY	TOTAL SHEETS	SHEET NO.
Default	PLOT SCALE = 100.0000' / 1in.	CHECKED -	REVISED -					55	2015-0711	COOK	117	107
	PLOT DATE = 12/8/2015	DATE -	REVISED -					<b>CONTRACT NO. 62B55</b>				
								ILLINOIS FED. AID PROJECT				



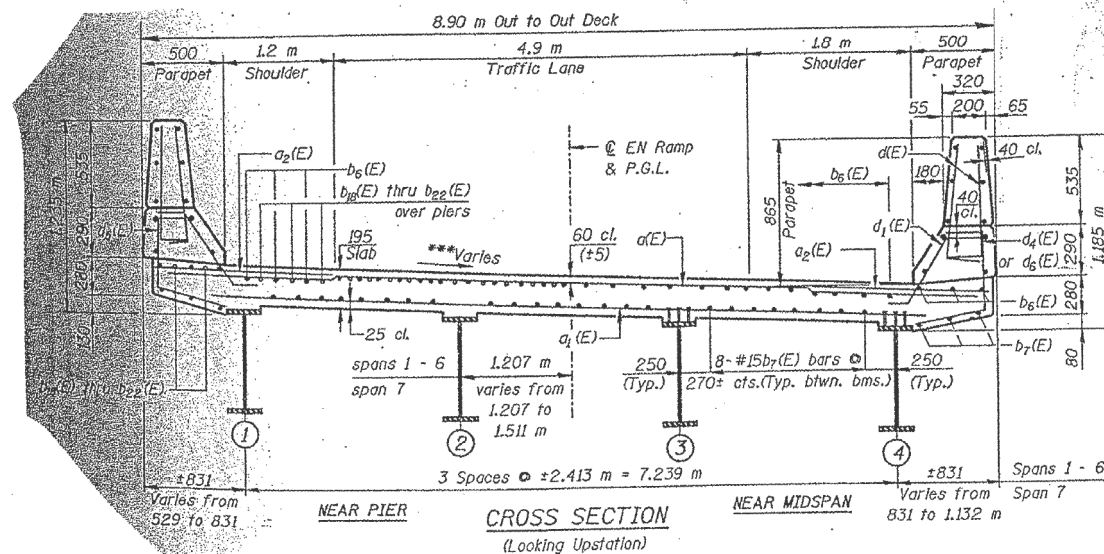
FOR INFORMATION ONLY

FILE NAME :	USER NAME : gorenautob	DESIGNED -	REVISED -	<b>STATE OF ILLINOIS DEPARTMENT OF TRANSPORTATION</b>	<b>EXISTING PLANS. LOCATION 6. SN 016-1056 (EB)</b>	F.A.I. RTE.:	SECTION	COUNTY	TOTAL SHEETS	SHEET NO.
Default	PLOT SCALE = 100.0000' / 1in.	CHECKED -	REVISED -			55	2015-0711	COOK	117	108
	PLOT DATE = 12/8/2015	DATE -	REVISED -		SCALE:	SHEET 2 OF 4 SHEETS		STA.	TO STA.	
CONTRACT NO. 62B55										
ILLINOIS FED. AID PROJECT										

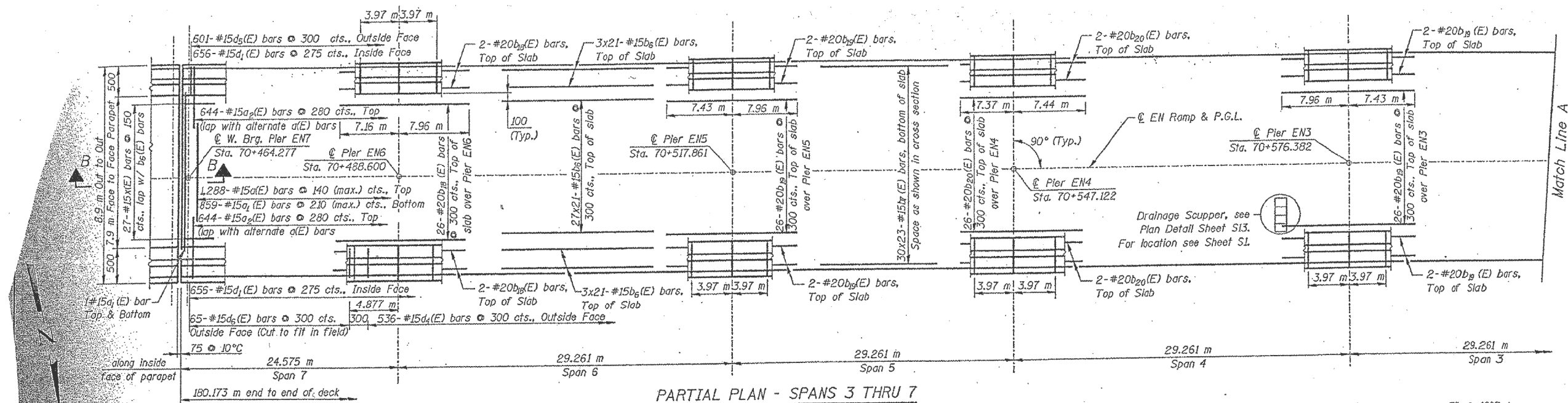




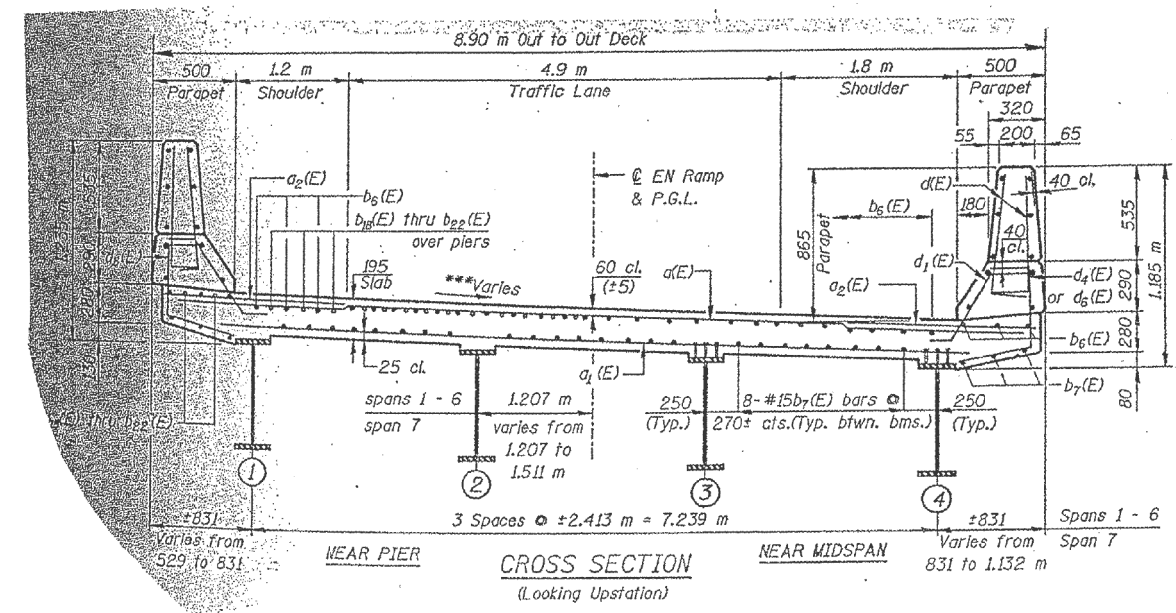
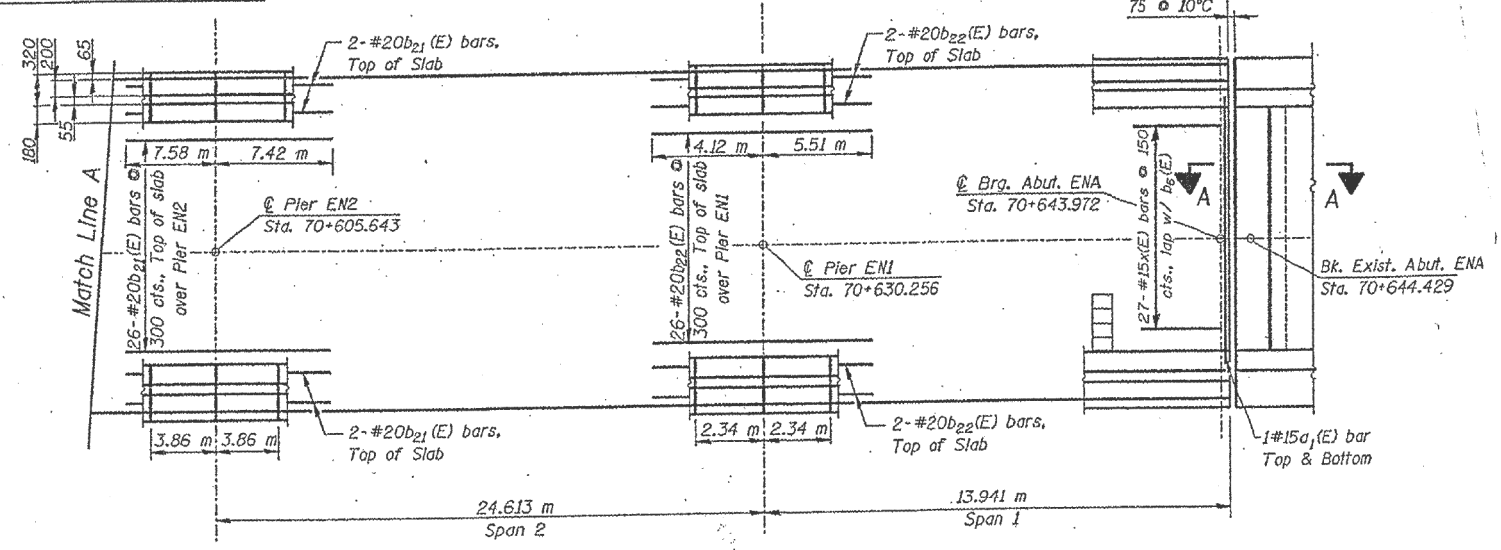
**FOR INFORMATION ONLY**



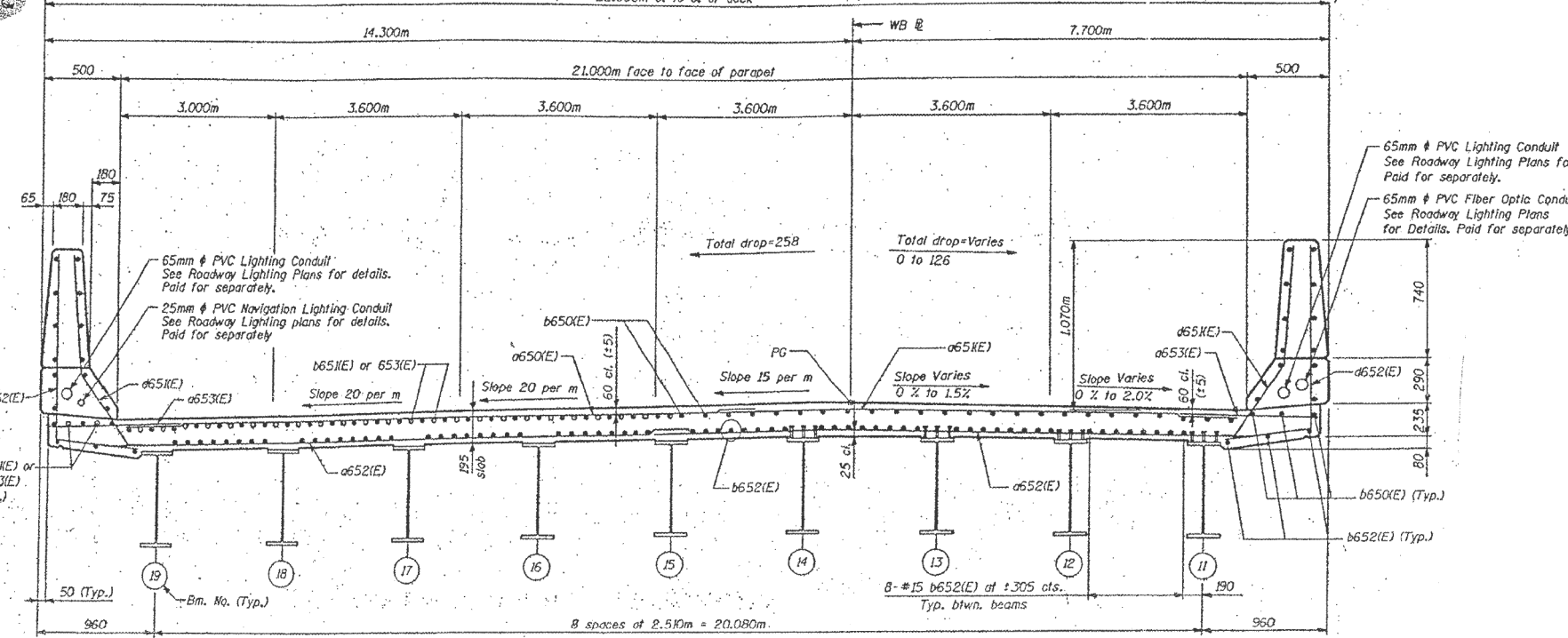
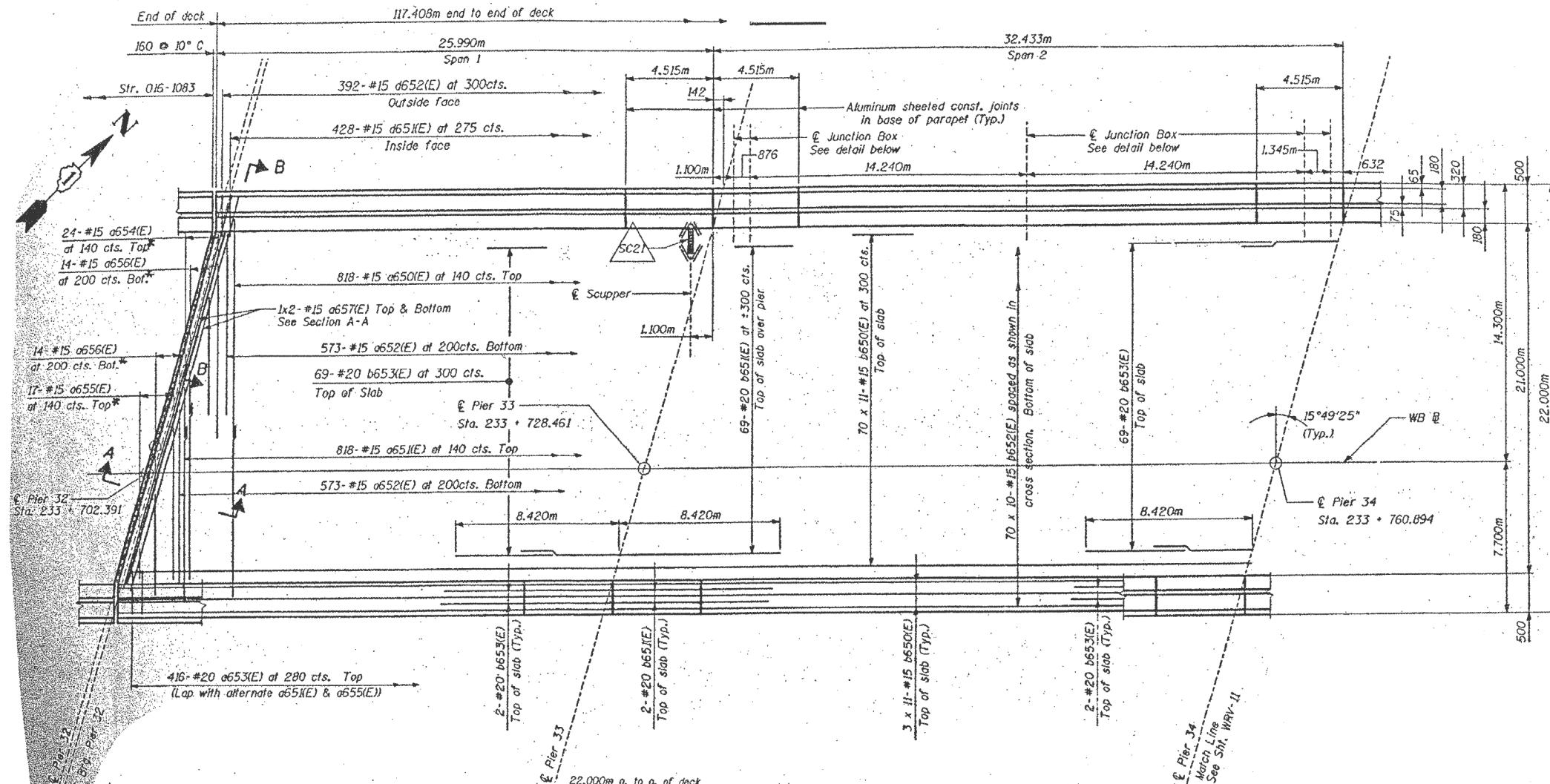
FILE NAME =	USER NAME = gorenautob	DESIGNED -	REVISED -	<b>STATE OF ILLINOIS DEPARTMENT OF TRANSPORTATION</b>	<b>EXISTING PLANS. LOCATION 6. SN 016-1056 (EB)</b>		F.A.I. RTE.	SECTION	COUNTY	TOTAL SHEETS	SHEET NO.	
pw\11084EBID\INTEG\illinois.gov\PIWID\Documents\DOT Offices\District 1\Projects\1056\BROWNSTO\Design\105616-sht-plan02.dgn		REVISOR -	DATE -		55	2015-0711	COOK	117	109	CONTRACT NO. 62B55		
Default	PLOT SCALE = 100.0000' / 1in.	CHECKED -	REVISOR -		SCALE:	SHEET 3	OF 4 SHEETS	STA.	TO STA.	ILLINOIS FED. AID PROJECT		
	PLOT DATE = 12/8/2015	DATE -	REVISOR -									



**FOR INFORMATION ONLY**



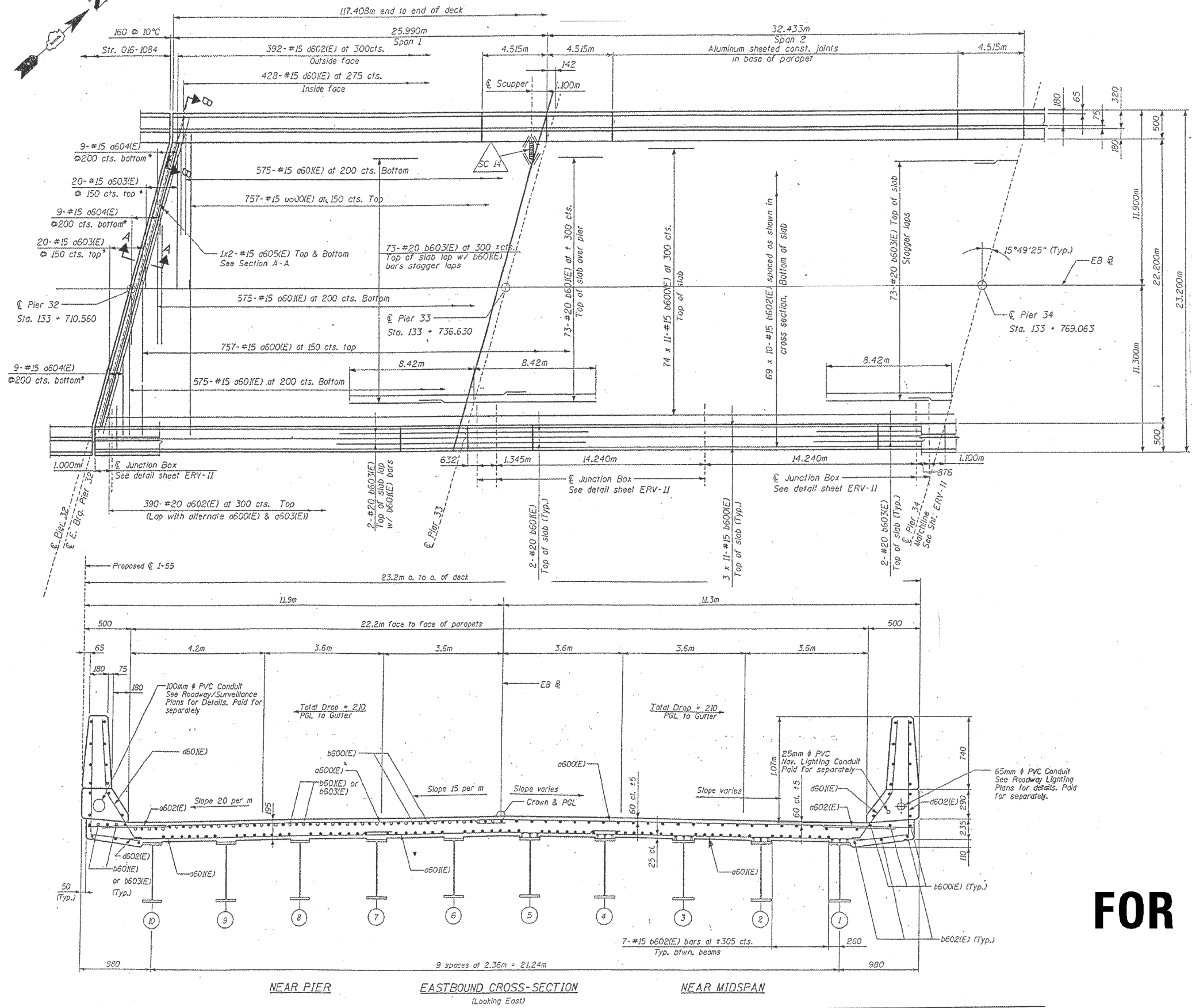
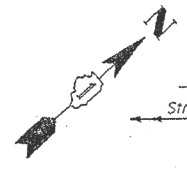
FILE NAME =	USER NAME = gorenautab	DESIGNED -	REVISED -	<b>STATE OF ILLINOIS DEPARTMENT OF TRANSPORTATION</b>	<b>EXISTING PLANS, LOCATION 6. SN 016-1056 (EB)</b>		F.A.I. RTE. =	SECTION	COUNTY	TOTAL SHEETS	SHEET NO.
Default		CHECKED -	REVISED -		55	2015-0711	COOK	117	110		
		DATE -	REVISED -		CONTRACT NO. 62B55			ILLINOIS FED. AID PROJECT			
					SCALE:	SHEET 4 OF 4 SHEETS	STA.	TO STA.			



**FOR INFORMATION ONLY**

FILE NAME =	USER NAME = gorenautob	DESIGNED -	REVISED -	<b>STATE OF ILLINOIS DEPARTMENT OF TRANSPORTATION</b>	<b>EXISTING PLANS. LOCATION 7. SN 016-1085 (WB)</b>			F.A.I. RTE.	SECTION	COUNTY	TOTAL SHEETS	SHEET NO.
Default	PLOT DATE = 12/8/2015	CHECKED -	REVISED -					55	2015-0711	COOK	117	111
		DATE -	REVISED -		<b>CONTRACT NO. 62B55</b>				ILLINOIS FED. AID PROJECT			
					SCALE:	SHEET 1	OF 2 SHEETS	STA.	TO STA.			

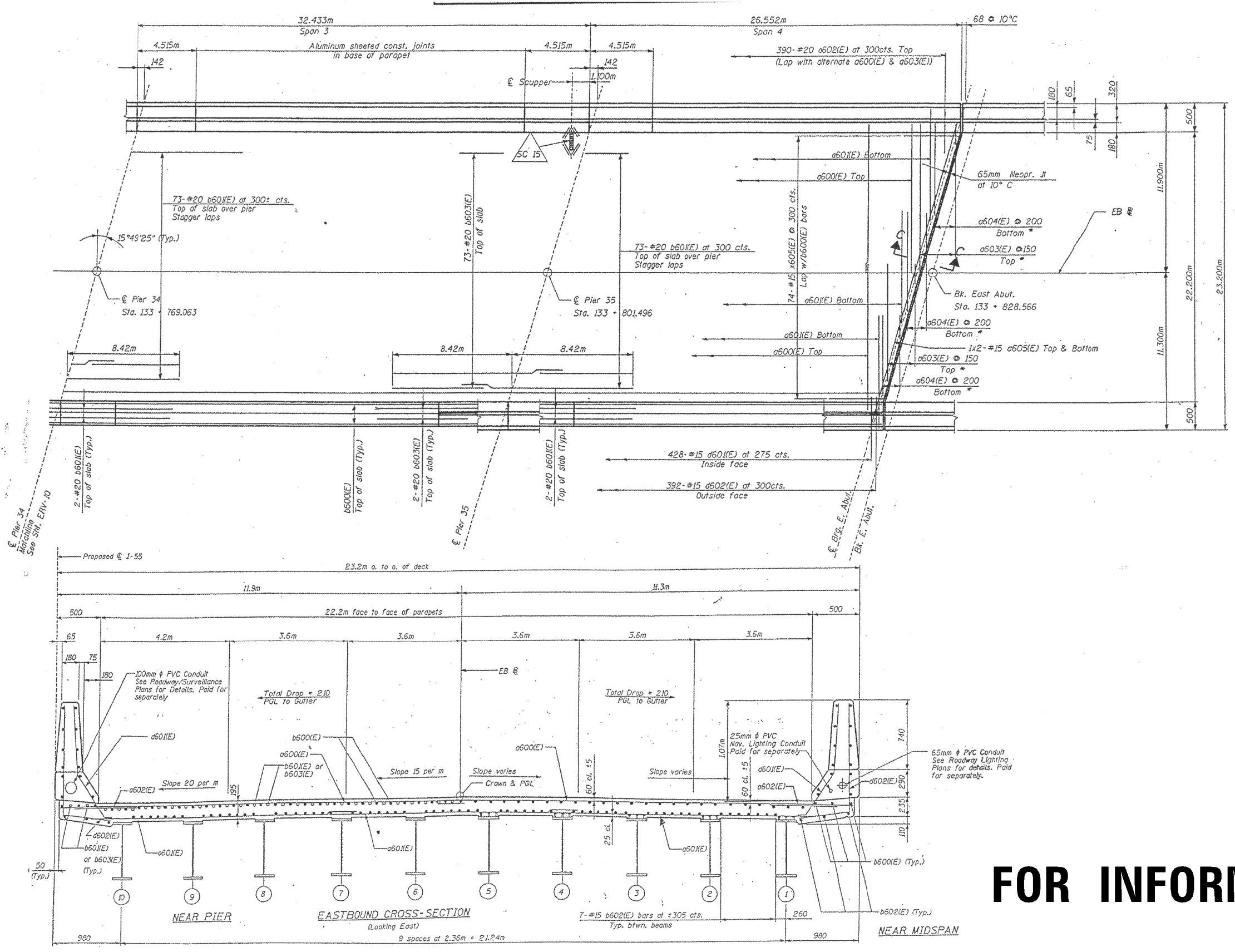




**FOR INFORMATION ONLY**

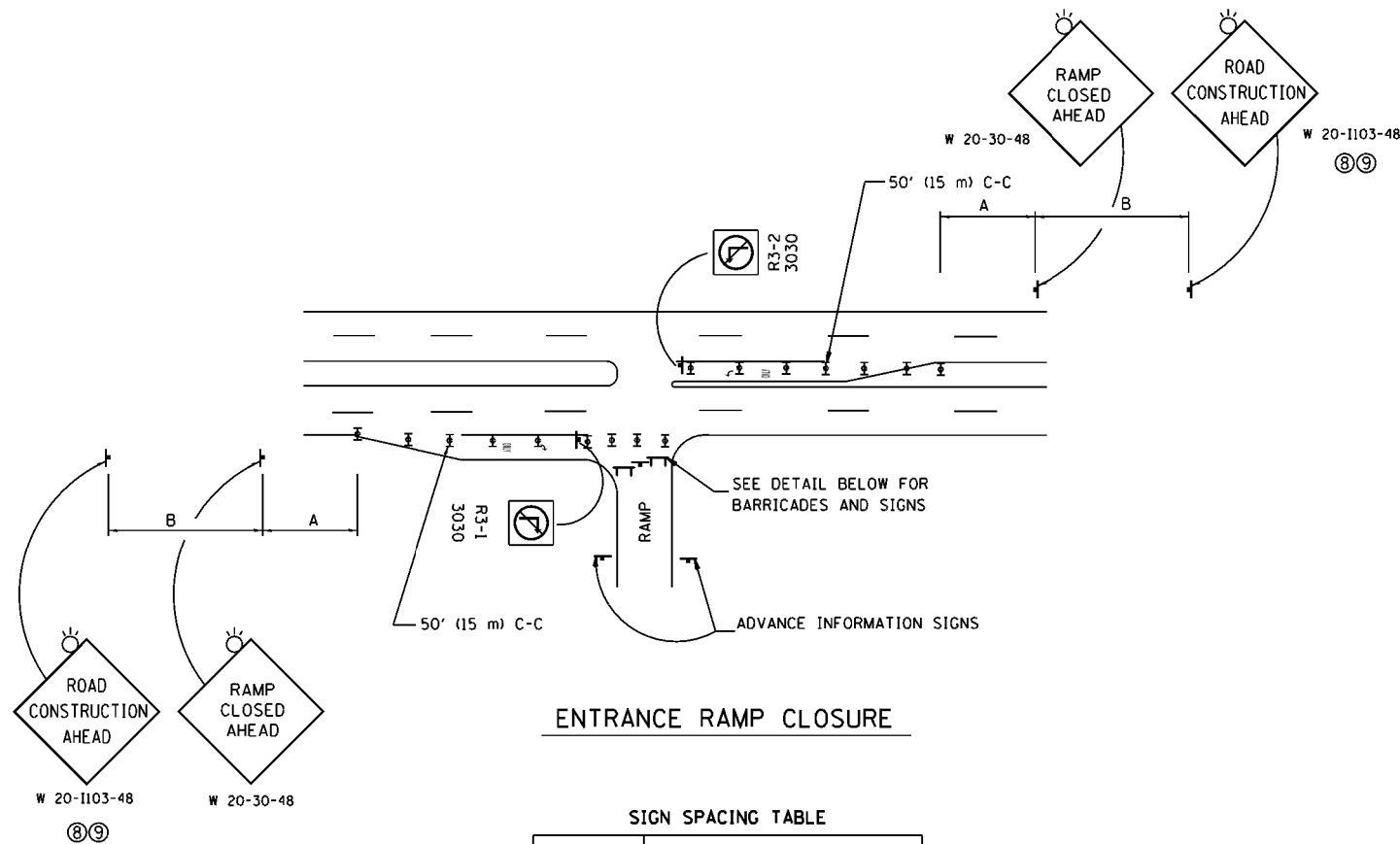
FILE NAME :	USER NAME = gorenautob	DESIGNED -	REVISED -	<b>STATE OF ILLINOIS DEPARTMENT OF TRANSPORTATION</b>	<b>EXISTING PLANS, LOCATION 8. SN 016-1086 (EB)</b>		F.A.I. RTE.	SECTION	COUNTY	TOTAL SHEETS	SHEET NO.			
Default		CHECKED -	REVISED -		SCALE:	SHEET 1	OF 2 SHEETS	STA.	TO STA.	55	2015-0711	COOK	117	113
		DATE -	REVISED -							CONTRACT NO. 62B55				
										ILLINOIS FED. AID PROJECT				





**FOR INFORMATION ONLY**

FILE NAME =	USER NAME = gorenautob	DESIGNED -	REVISED -	<b>STATE OF ILLINOIS DEPARTMENT OF TRANSPORTATION</b>	<b>EXISTING PLANS, LOCATION 8. SN 016-1086 (EB)</b>	F.A.I. RTE. =	SECTION =	COUNTY =	TOTAL SHEETS =	SHEET NO. =	
Default	PLOT SCALE = 100.0000' / 1in.	CHECKED -	REVISED -			55	2015-0711	COOK	117	114	
	PLOT DATE = 12/8/2015	DATE -	REVISED -			CONTRACT NO. 62B55					
						SCALE:	SHEET 2 OF 2 SHEETS	STA.	TO STA.	ILLINOIS FED. AID PROJECT	

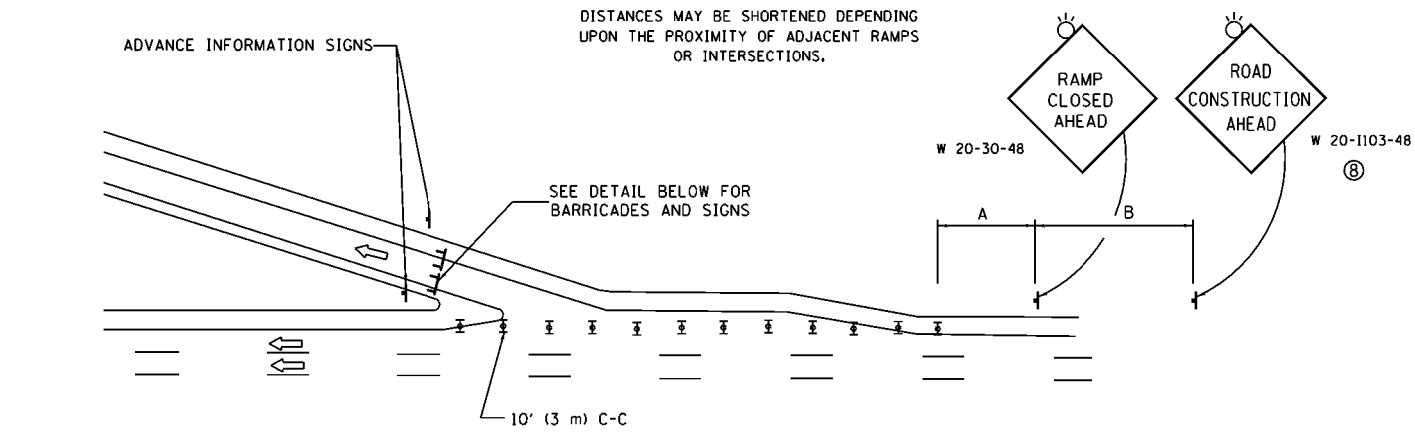


ENTRANCE RAMP CLOSURE

SIGN SPACING TABLE

FACILITY	DISTANCE BETWEEN SIGNS	
	A	B
EXPRESSWAY >24 HOURS	1000' (300 m)	1500' (450 m)
EXPRESSWAY <24 HOURS	500' (150 m)	500' (150 m)
ARTERIAL 55 MPH	500' (150 m)	500' (150 m)
ARTERIAL 50-45 MPH	350' (100 m)	350' (100 m)
ARTERIAL <45 MPH	200' (60 m)	200' (60 m)

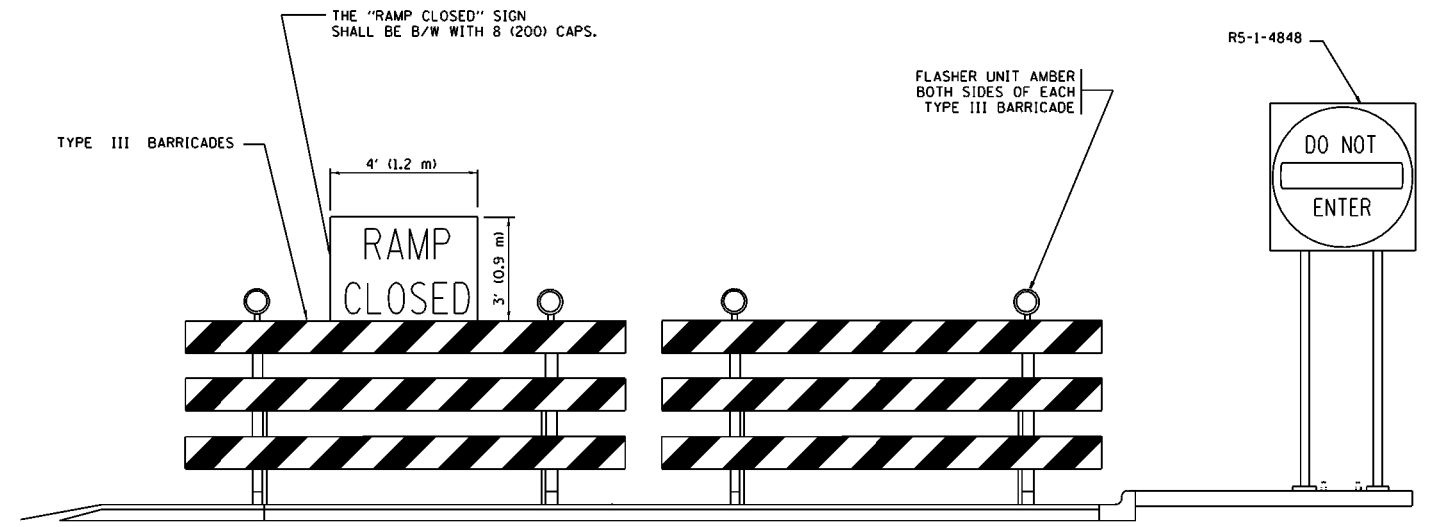
DISTANCES MAY BE SHORTENED DEPENDING UPON THE PROXIMITY OF ADJACENT RAMPS OR INTERSECTIONS.



EXIT RAMP CLOSURE

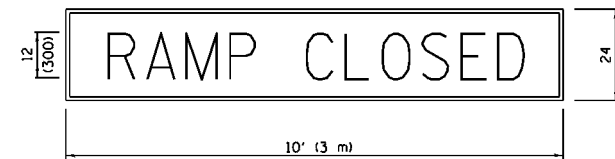
**SYMBOLS**

- ⊥ TYPE II BARRICADE OR DRUM WITH STEADY BURN MONO-DIRECTIONAL LIGHT
- ⊓ TYPE III BARRICADE WITH 2 FLASHING LIGHTS



DETAIL FOR REQUIRED BARRICADES & SIGNS

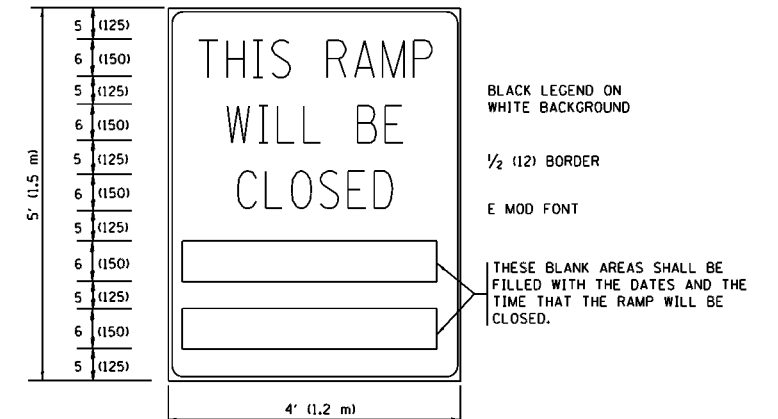
RAMP CLOSURE ADVANCE WARNING SIGN



BLACK LEGEND ON ORANGE BACKGROUND MOUNTED DIAGONALLY  
E MOD FONT  
1 (25) BORDER

THESE SIGNS ARE REQUIRED ON ALL THE EXIT GUIDE SIGNS FOR EXIT RAMPS THAT WILL BE CLOSED FOR MORE THAN FOUR (4) CONSECUTIVE DAYS.

RAMP CLOSURE ADVANCE INFORMATION SIGN



THESE BLANK AREAS SHALL BE FILLED WITH THE DATES AND THE TIME THAT THE RAMP WILL BE CLOSED.

THESE SIGNS ARE REQUIRED ON BOTH SIDES OF THE RAMP, MINIMUM OF 1 WEEK IN ADVANCE OF THE CLOSURE.

THESE SIGNS SHALL BE FABRICATED AND PAID FOR ACCORDING TO THE TEMPORARY INFORMATION SIGNING SPECIAL PROVISION

**GENERAL NOTES:**

- ① CONES MAY BE SUBSTITUTED FOR DRUMS OR TYPE II BARRICADES DURING DAY OPERATIONS. CONES SHALL BE A MINIMUM OF 28 (700) HIGH.
- ② STEADY BURN LIGHTS WILL NOT BE REQUIRED FOR DAY OPERATIONS.
- ③ A FLAGGER SHALL BE POSITIONED AT EACH CLOSED RAMP THAT IS OPEN TO CONSTRUCTION VEHICLES, PRECEDED BY A W20-7 FLAGGER WARNING SIGN.
- ④ ALL ROUTE MARKERS AND TRAILBLAZER ASSEMBLIES WHICH DIRECT MOTORISTS TO A CLOSED ENTRANCE RAMP SHALL BE COVERED WHEN THE RAMP IS CLOSED FOR MORE THAN FOUR (4) DAYS.
- ⑤ THE SIGNING AND BARRICADING WHICH IS REQUIRED BY THIS DETAIL SHALL BE INCLUDED IN THE COST OF TRAFFIC CONTROL AND PROTECTION (EXPRESSWAYS).
- ⑥ AUTHORIZATION FROM THE DISTRICT'S BUREAU OF TRAFFIC IS REQUIRED FOR ALL RAMP CLOSURES.
- ⑦ THE RAMP CLOSURE ADVANCE INFORMATION SIGNS SHALL BE ERECTED IF THE CLOSURE TIME EXCEEDS TWENTY-FOUR (24) HOURS. ADDITIONAL ADVANCE WARNING SIGNS ON EXIT GUIDE SIGNING WILL BE REQUIRED FOR EXIT RAMP CLOSURES THAT EXCEED FOUR (4) DAYS IN LENGTH.
- ⑧ ROAD CONSTRUCTION AHEAD SIGNS MAY BE OMITTED WHEN THIS DETAIL IS USED IN CONJUNCTION WITH OTHER TRAFFIC CONTROL THAT ALREADY INCLUDES A ROAD CONSTRUCTION AHEAD SIGN.
- ⑨ ARTERIAL ROAD CONSTRUCTION AHEAD SIGNS SHALL BE INSTALLED ON THE LEFT SIDE OF TRAFFIC IF THE MEDIAN IS MORE THAN 10 FT WIDE.

ALL DIMENSIONS ARE IN INCHES (MILLIMETERS) UNLESS OTHERWISE SHOWN.

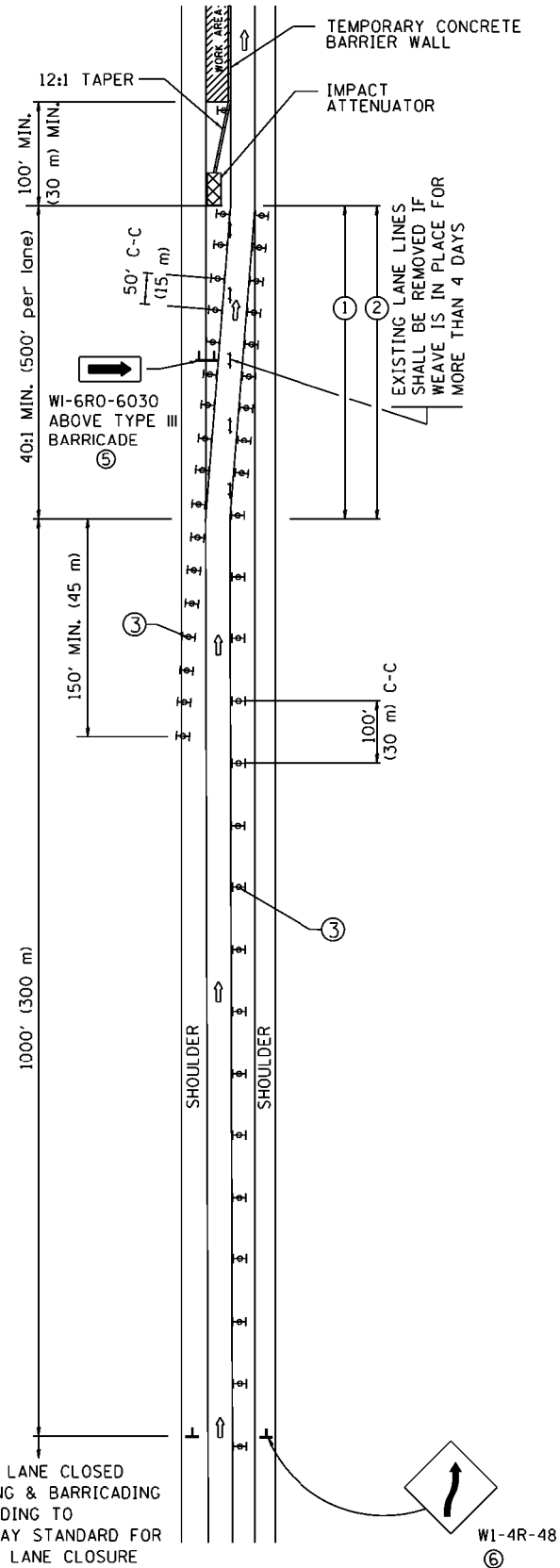
FILE NAME =	USER NAME = gorenautab	DESIGNED - DWS	REVISED - JAF 02-06
p:\IL\084EBID\INTEG\illinois.gov\PI\DOT\Documents\IDOT Offices\District 1\Projects\DI084EBID\Design\DistStd.dgn		REVISED - SPB 01-07	
PLOT SCALE = 100.0000' / 1in.	CHECKED -	REVISED - SPB 12-09	
PLOT DATE = 12/8/2015	DATE - 02-83	REVISED - MD 06-13	

STATE OF ILLINOIS  
DEPARTMENT OF TRANSPORTATION

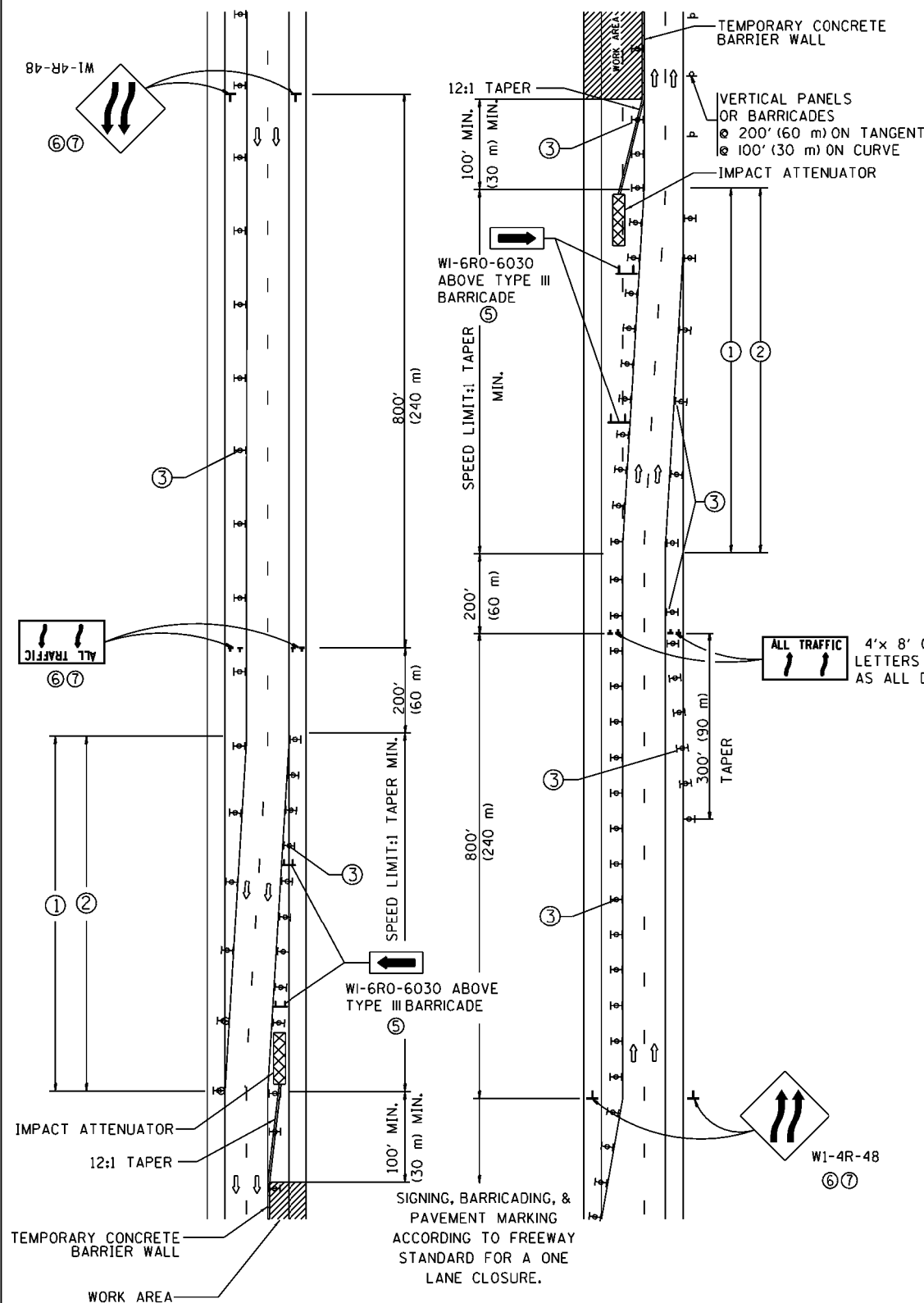
ENTRANCE AND EXIT RAMP CLOSURE DETAILS		SCALE: NONE	SHEET NO. 1 OF 1 SHEETS	STA. TO STA.
---	--	-------------	-------------------------	--------------

F.A.I. RTE. 55	SECTION 2015-0711	COUNTY COOK	TOTAL SHEETS 117	SHEET NO. 115
TC-08		CONTRACT NO. 62B55		
FED. ROAD DIST. NO. 1 ILLINOIS FED. AID PROJECT				

# SINGLE LANE WEAVE



# MULTI-LANE WEAVE



### GENERAL NOTES

- ① EXISTING CONFLICTING PAVEMENT MARKING LINES SHALL BE REMOVED. PAVEMENT MARKING REMOVAL SHALL NOT BE REQUIRED FOR SINGLE LANE WEAVES UNDER 4 DAYS IN DURATION.
- ② CONTINUOUS REFLECTIVE TEMPORARY PAVEMENT MARKING TAPE SHALL BE PLACED THROUGHOUT THE TAPER AND FOR 300' (90 m) ALONG SIDE THE WORK AREA WHERE THE CLOSURE TIME IS GREATER THAN FOURTEEN DAYS. THE LEFT EDGE LINE SHALL BE YELLOW AND THE RIGHT EDGE LINE SHALL BE WHITE. FOR MULTI-LANE WEAVES LANE LINES SHALL BE 5 INCH, 10'-30' (3 m-9 m) SKIP DASH, WHITE.
- ③ PLASTIC DRUMS WITH STEADY BURN LIGHTS AT 50' (15 m) C-C SPACING IN TAPERS AND 100' (30 m) C-C SPACING IN TANGENTS.
- ④ ALL SIGNS SHALL BE POST MOUNTED IF THE CLOSURE TIME EXCEEDS FOUR DAYS.
- ⑤ TYPE III BARRICADES MAY BE OMITTED FOR SINGLE-LANE WEAVES UNDER 24-HOURS IN DURATION. W1-6 SIGNS WILL STILL BE REQUIRED. IF THE WIDTH OF OFFSET IS LESS THAN 6' THEN THE TYPE III BARRICADE WITH ATTACHED ARROW SIGN PANEL CAN BE ELIMINATED IN THE TAPER AREAS.
- ⑥ WHEN THE LENGTH OF THE SHIFTED SEGMENT (DISTANCE BETWEEN WEAVE POINTS) IS LESS THAN 1500', DOUBLE REVERSE CURVE SIGNS (W24-1) SHOULD BE USED INSTEAD OF THE REVERSE CURVE (W1-4) SIGNS. ARROWS ON THE 4'X8' "ALL TRAFFIC" SIGNS SHALL BE THE SAME SHAPE.
- ⑦ THE NUMBER OF ARROWS ON THESE SIGNS SHALL MATCH THE NUMBER OF LANES OPEN TO TRAFFIC.

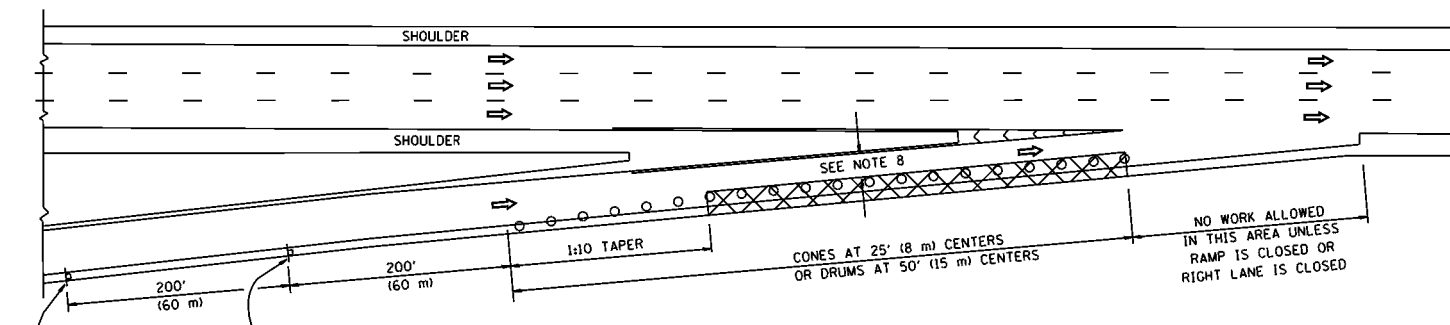
### SYMBOLS

- DIRECTION OF TRAFFIC
- WORK AREA
- SIGN ON PORTABLE OR PERMANENT SUPPORT
- TYPE II BARRICADE OR DRUM WITH MONO-DIRECTIONAL STEADY BURNING LIGHT
- TEMPORARY CONCRETE BARRIER WALL
- IMPACT ATTENUATOR
- W1-4R-48
- W24-1-48

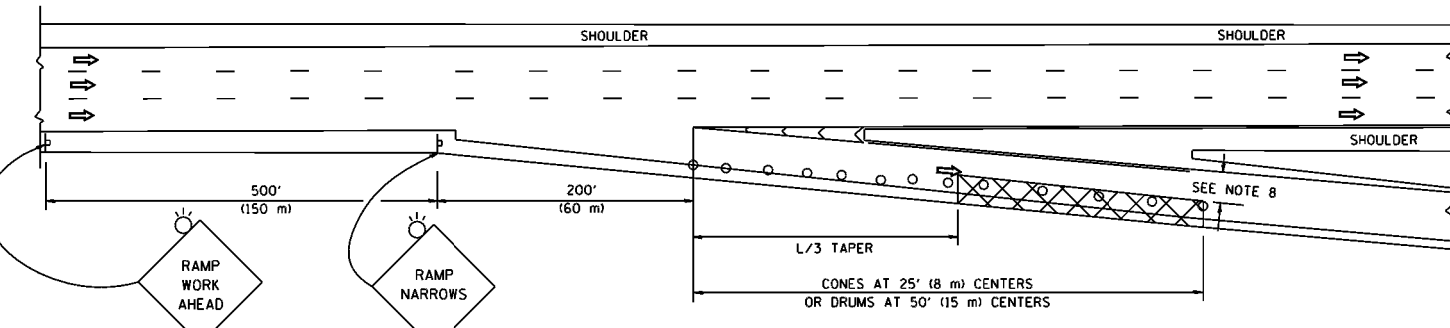
ALL DIMENSIONS ARE IN INCHES (MILLIMETERS) UNLESS OTHERWISE SHOWN

FILE NAME =	USER NAME = gorenautab	DESIGNED - DWS	REVISED - JAF 02-06	<b>STATE OF ILLINOIS DEPARTMENT OF TRANSPORTATION</b>	<b>TRAFFIC CONTROL DETAILS FOR FREEWAY SINGLE &amp; MULTI-LANE WEAVE</b>			F.A.I. RTE. 55	SECTION 2015-0711	COUNTY COOK	TOTAL SHEETS 117	SHEET NO. 116	
p:\11084EBID\INTEG\illinois.gov\FWIDOT\Documents\IDOT Offices\District 1\Projects\Dist 1\BROW\eto\Design\DistStd.dgn					REVISED - SPB 01-07	SCALE: NONE			SHEET NO. 1 OF 1 SHEETS	STA. TO STA.	FED. ROAD DIST. NO. 1 ILLINOIS FED. AID PROJECT		
PLOT SCALE = 100.0000' / 1in.					REVISED - SPB 12-09							CONTRACT NO. 62855	
PLOT DATE = 12/17/2015					DATE - 02-87	REVISED - MD 06-13							

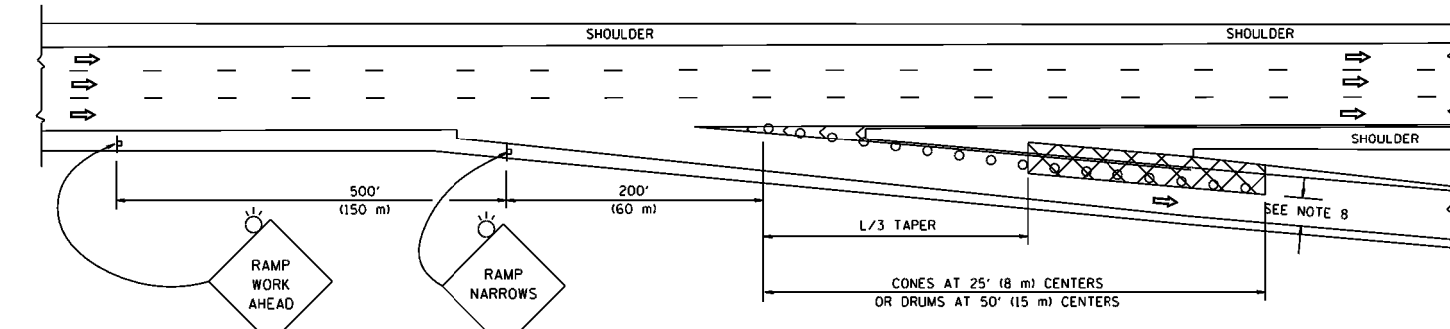
PARTIAL RAMP CLOSURE DETAILS



TYPICAL ENTRANCE RAMP



TYPICAL EXIT RAMP



TYPICAL EXIT RAMP

SYMBOLS

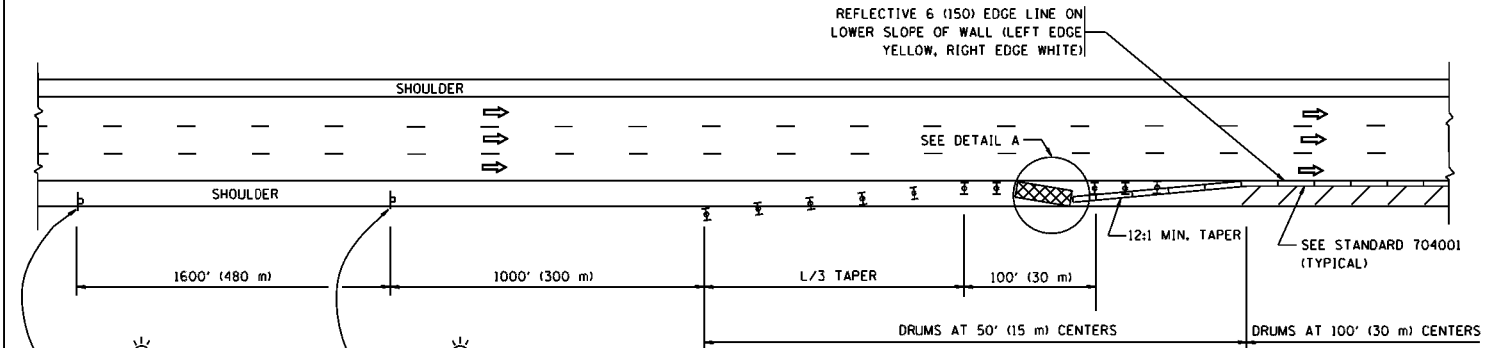
- ACTIVE WORK AREA
- SIGN ON PORTABLE OR PERMANENT SUPPORT
- FLAGGER WITH CONTROL SIGN
- TYPE II BARRICADE OR DRUM WITH STEADY BURN MONO-DIRECTIONAL LIGHT
- CONE, DRUM OR BARRICADE
- IMPACT ATTENUATOR OF TYPE AND TEST LEVEL SPECIFIED

GENERAL NOTES

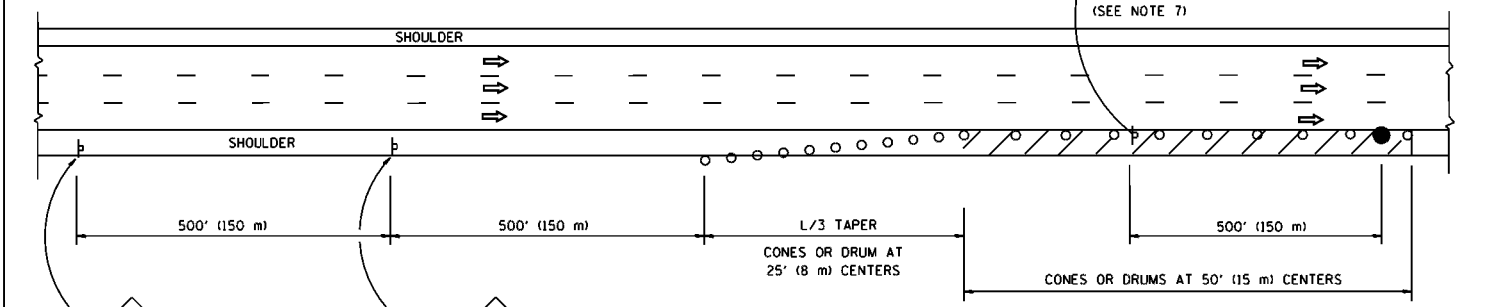
1. THE "L" DISTANCE EQUALS:
 

SPEED LIMIT	FORMULAS
45 mph (80 km/h) OR GREATER:	METRIC    ENGLISH L=0.65(WXS)    L=(WXS)
W = WIDTH OF OFFSET IN FEET (METERS) S = NORMAL POSTED SPEED MPH (KM/H)	
2. PLASTIC DRUMS WITH HIGH PERFORMANCE REFLECTIVE SHEETING AND STEADY BURNING LIGHTS ARE REQUIRED FOR ALL NIGHTTIME CLOSURES.
3. ALL SIGNS SHALL BE POST MOUNTED IF THE CLOSURE TIME EXCEEDS FOUR DAYS.
4. FLASHING LIGHTS SHALL BE USED DURING THE HOURS OF DARKNESS AND SHALL BE INSTALLED ABOVE THE FIRST TWO SETS OF SIGNS.

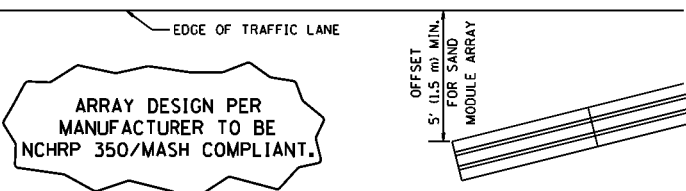
SHOULDER CLOSURE DETAILS



PERMANENT SHOULDER CLOSURE



DAYTIME SHOULDER CLOSURE



DETAIL "A"  
IMPACT ATTENUATOR, TEMPORARY  
(SEE NOTE 5)

5. THE IMPACT ATTENUATOR, TEMPORARY IS NOT REQUIRED WHEN THE TEMPORARY CONCRETE BARRIER WALL IS PROTECTED BY OR IS TIED INTO THE EXISTING GUARDRAIL. IF OFFSET IS LESS THAN 5 FEET USE NARROW USE TYPE DEVICE TO MEET NCHRP350/MASH.
6. AUTHORIZATION FROM THE DISTRICT'S BUREAU OF TRAFFIC IS REQUIRED FOR ALL FREEWAY CLOSURES.
7. THE FLAGGER AND FLAGGER SIGN ARE REQUIRED AT THE ABOVE WORK SITES WHEN:
  - a. FOUR OR MORE WORK VEHICLES ENTER THE TRAFFIC LANES IN A ONE HOUR PERIOD.
  - b. THE WORK ACTIVITY REQUIRES FREQUENT ENCR OACHMENT INTO THE LANE OPEN TO TRAFFIC.
 THE FLAGGER SHALL BE STATIONED APPROXIMATELY 100' (30 m) TO 200' (60 m) IN ADVANCE OF THE WORKERS.
8. 12' MIN. WIDTH TANGENT SECTION  
16' MIN. WIDTH CURVE SECTION.

ALL DIMENSIONS ARE IN INCHES (MILLIMETERS) UNLESS OTHERWISE SHOWN.

FILE NAME =	USER NAME = gorenautab	DESIGNED -	REVISED - J.A.F. 12-06	<b>STATE OF ILLINOIS DEPARTMENT OF TRANSPORTATION</b>	<b>TRAFFIC CONTROL DETAILS FOR FREEWAY SHOULDER CLOSURES AND PARTIAL RAMP CLOSURES</b>	F.A.I. RTE.	SECTION	COUNTY	TOTAL SHEETS	SHEET NO.	
			REVISED - S.P.B. 01-07			55	2015-0711	COOK	117	117	
			REVISED - S.P.B. 12-09			TC-17		CONTRACT NO. 62855			
			REVISED - M.D. 06-13			FED. ROAD DIST. NO. 1 ILLINOIS FED. AID PROJECT					
PLOT SCALE = 100.0000' / 1in.		CHECKED -		SCALE: NONE		SHEET NO. 1 OF 1 SHEETS		STA. TO STA.			
PLOT DATE = 12/8/2015		DATE = 11-96									