

STATE OF ILLINOIS
DEPARTMENT OF TRANSPORTATION
DIVISION OF HIGHWAYS

**PROPOSED
HIGHWAY PLANS**

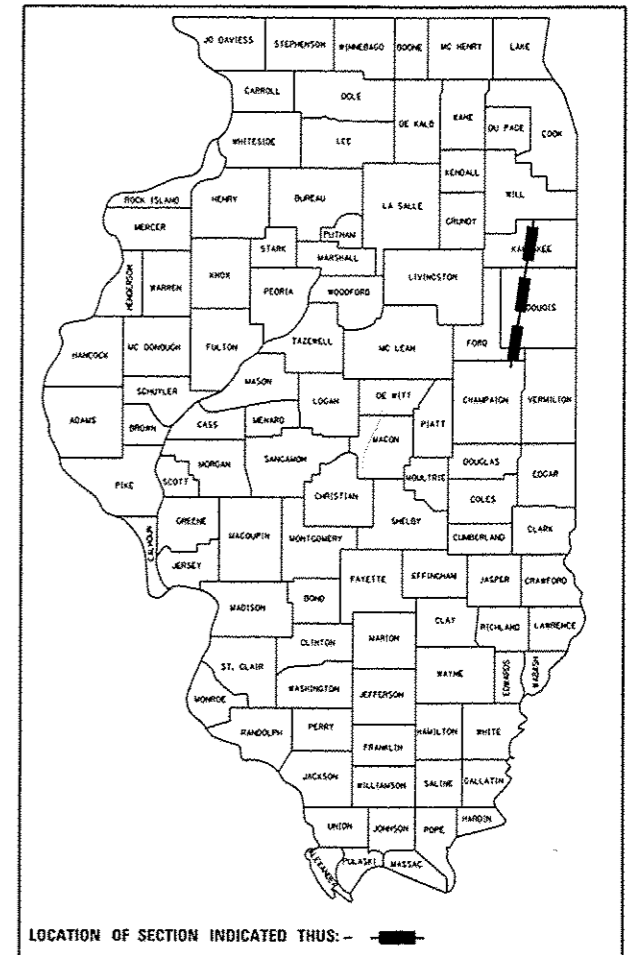
FAI 57 (I-57)
SECTION: 2016-2 WEED SPRAY
VARIOUS COUNTIES

C-93-022-16

F.A.I. RTE.	SECTION	COUNTY	TOTAL SHEETS	SHEET NO.
I-57	2016-2 WEED SPRAY	ILLINOIS	11	1

* KANKAKEE, IROQUOIS, & FORD

D-93-021-16

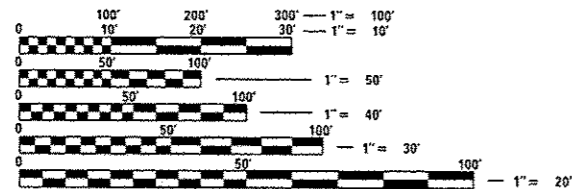


INDEX OF SHEETS

- 1 COVER SHEET
- 2 GENERAL NOTES
- 3 SUMMARY OF QUANTITIES
- 4-6 WEED SPRAY SCHEDULES
- 7-8 GPS COORDINATES FOR WEEDS
- 9-11 DETAILED LOCATION MAPS

LIST OF ILLINOIS DOT HIGHWAY STANDARDS

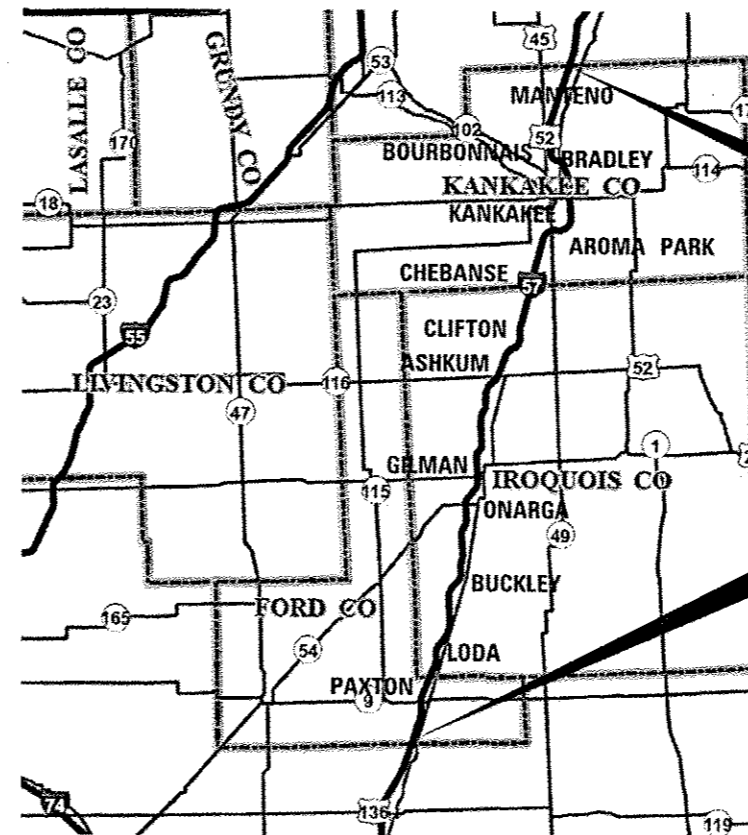
- 701101-04 OFF-ROAD OPERATIONS MULTILANE, 15' (4.5 m) TO 24" (600 mm) FROM PAVEMENT EDGE
- 701106-02 OFF-ROAD OPERATIONS, MULTILANE, MORE THAN 15' (4.5 m) AWAY
- 701426-07 LANE CLOSURE, MULTILANE INTERMITTENT OR MOVING OPERATION, FOR SPEEDS ≥ 45 MPH
- 701901-04 TRAFFIC CONTROL DEVICES



FULL SIZE PLANS HAVE BEEN PREPARED USING STANDARD ENGINEERING SCALES. REDUCED SIZED PLANS WILL NOT CONFORM TO STANDARD SCALES. IN MAKING MEASUREMENTS ON REDUCED PLANS, THE ABOVE SCALES MAY BE USED.

J.U.L.I.E.
JOINT UTILITY LOCATION INFORMATION FOR EXCAVATION
1-800-892-0123
OR 811

DISTRICT 3 (815) 434-6131
PROJECT ENGINEER: DAVE ALEXANDER, P.E.
UNIT CHIEF: DUANE LUKKARI, P.E.
TOWNSHIPS: VARIOUS
CONTRACT NO. 66F13



LOCATION MAP - NOT TO SCALE



APPROX. M.P. 325
NORTH END OF PROJECT

SOUTH END OF PROJECT
APPROX. M.P. 261

FUNCTIONAL CLASSIFICATION: INTERSTATE
2013 ADT's
NORTH END: ADT=28,000 SU=3.8% MU=18.0%
SOUTH END: ADT=14,600 SU=6.0% MU=32.2%

STATE OF ILLINOIS
DEPARTMENT OF TRANSPORTATION
DIVISION OF HIGHWAYS

SUBMITTED December 18, 2015
Paul Loetz, P.E.
DEPUTY DIRECTOR OF HIGHWAYS, REGION ENGINEER

Jan 29, 2016
Muhammad M. Adonis, P.E.
ENGINEER OF DESIGN AND ENVIRONMENT

Jan 29, 2016
Omer Osman, P.E.
DIRECTOR OF HIGHWAYS, CHIEF ENGINEER

PRINTED BY THE AUTHORITY
OF THE STATE OF ILLINOIS

GENERAL NOTES

ANY REFERENCE TO A STANDARD IN THESE PLANS SHALL BE INTERPRETED TO MEAN THE EDITION AS INDICATED BY THE SUBNUMBER SHOWN IN THE LIST OF STANDARDS OR THE COPY INCLUDED IN THESE PLANS.

THE FOLLOWING RATES OF APPLICATION HAVE BEEN USED IN CALCULATING PLAN QUANTITIES:

HERBICIDE / INGREDIENTS	APPLICATION RATE		PAY ITEM
MILESTONE	7	OUNCES / ACRE	WEED CONTROL, BROADLEAF IN TURF
RODEO	6	PINTS / ACRE (OR 96 OUNCES / ACRE)	WEED CONTROL, AQUATIC
ARSENAL	4	PINTS / ACRE (OR 64 OUNCES / ACRE)	WEED CONTROL, AQUATIC
IMPROVED SURFACTANT	1	QUART / 100 GALLONS OF WATER	N/A
WATER	20	GALLONS MINIMUM / ACRE	N/A

COMMITMENTS: NONE

STATE OF ILLINOIS
DEPARTMENT OF TRANSPORTATION
DISTRICT THREE
AS BUILT INFORMATION

STATE OF ILLINOIS
DEPARTMENT OF TRANSPORTATION
DISTRICT THREE

SUPERVISING CONSTRUCTION FIELD ENGINEER

RESIDENT ENGINEER / TECHNICIAN

START & END DATES
OF CONSTRUCTION:

INSPECTORS:

PREPARED BY: *T. Bevil*
DISTRICT STUDIES & PLANS ENGINEER

DATE: December 18, 2015

EXAMINED BY: *[Signature]*
DISTRICT CONSTRUCTION ENGINEER

[Signature]
DISTRICT MATERIALS ENGINEER

[Signature]
DISTRICT OPERATIONS ENGINEER

*KANKAKEE, IROQUOIS, & FORD

FILE NAME * c:\pwwork\pwwork\schwankerg\d0464807\066f13\sheet\cover and general notes.dgn	USER NAME * Schwankerg	DESIGNED -	REVISED -	STATE OF ILLINOIS DEPARTMENT OF TRANSPORTATION	GENERAL NOTES	F.A.I. RTE.	SECTION	COUNTY	TOTAL SHEETS	SHEET NO.
PLOT SCALE * 100.0000' / 1" =	DRAWN -	REVISED -	1-57			2016-2 WEED SPRAY	*	11	2	
PLOT DATE * 12/17/2015	CHECKED -	REVISED -	CONTRACT NO. 66F13							
	DATE -	REVISED -	ILLINOIS NON FED. AID PROJECT							
						SCALE:	SHEET	OF	SHEETS	STA. TO STA.

SUMMARY OF QUANTITIES				CONSTRUCTION CODE
CODE NO.	ITEM	UNIT	TOTAL QUANTITY	100% STATE ROADWAY 0031
67100100	MOBILIZATION	LSUM	1	1
K0029618	WEED CONTROL, BROADLEAF IN TURF	GALLON	83	83
K0029614	WEED CONTROL, AQUATIC	GALLON	19	19

3

FIRST APPLICATION (MILESTONE) WEED SPRAY ON I-57			
LOCATION	MILES	AREA	MILESTONE
		ACRES	GALLONS
KANKAKEE COUNTY			
NORTH END - APPROX. MP 325 TO MANTENO INTERCHANGE	3.50	70	3.80
MP 322 - MANTENO INTERCHANGE (CH 9)	-	25	1.37
MANTENO INTERCHANGE TO BRADLEY INTERCHANGE	6.50	113	6.20
MP 315 - BRADLEY INTERCHANGE (IL 50)	-	25	1.37
BRADLEY INTERCHANGE TO KANKAKEE INTERCHANGE	3.50	53	2.88
MP 312 - KANKAKEE INTERCHANGE (IL 17)	-	25	1.37
KANKAKEE INTERCHANGE TO US 45/52 INTERCHANGE	4.50	55	2.98
MP 308 - US 45/52 INTERCHANGE	-	25	1.37
US 45/52 INTERCHANGE TO CHEBANSE INTERCHANGE	5.00	90	4.94
KANKAKEE COUNTY TOTALS	23	480	26.3
IROQUOIS COUNTY			
MP 302 - CHEBANSE INTERCHANGE (CH 37)	-	25	1.37
DO NOT SPRAY AREA BETWEEN CHEBANSE INTERCHANGE AND CLIFTON INTERCHANGE			
MP 297 - CLIFTON INTERCHANGE (CH 4)	-	25	1.37
DO NOT SPRAY AREA BETWEEN CLIFTON INTERCHANGE AND ASHKUM INTERCHANGE			
MP 293 - ASHKUM INTERCHANGE (IL 116)	-	25	1.37
ASHKUM INTERCHANGE TO GILMAN INTERCHANGE	10.00	199	10.87
MP 283 - GILMAN INTERCHANGE (US 24)	-	25	1.37
GILMAN INTERCHANGE TO ONARGA INTERCHANGE	3.00	81	4.45
MP 280 - ONARGA INTERCHANGE (IL 54)	-	25	1.37
ONARGA INTERCHANGE TO BUCKLEY INTERCHANGE	9.00	207	11.34
MP 272 - BUCKLEY INTERCHANGE (CH 9)	-	25	1.37
BUCKLEY INTERCHANGE TO MP 263	8.00	199	10.87
IROQUOIS COUNTY TOTALS	30	836	45.7
FORD COUNTY			
MP 263 TO PAXTON INTERCHANGE	2.50	73	3.98
MP 261 - PAXTON INTERCHANGE (IL 9)	-	25	1.37
PAXTON INTERCHANGE TO SOUTH END - APPROX. MP 257	4.00	102	5.57
FORD COUNTY TOTALS	7	200	10.9
GRAND TOTALS	60	1516	83

NOTES:

DO NOT SPRAY IN CONSTRUCTION ZONES
DO NOT SPRAY WHERE BARRIER WALL STARTS AT MP 319.5 TO MP 317.7 (6000 N.)

APPLICATION RATES:

MILESTONE = 7 OUNCES / ACRE
NON-IONIC SURFACTANT = 1 PINT / 100 GALLONS WATER
WATER = 20 GALLONS MINIMUM / ACRE

PAY ITEM FOR THIS PAGE = 83 GALLONS OF WEED CONTROL, BROADLEAF IN TURF

FILE NAME =	USER NAME = lukkaridp	DESIGNED -	REVISED -	STATE OF ILLINOIS DEPARTMENT OF TRANSPORTATION	SCHEDULE	F.A.I. RTE.	SECTION	COUNTY	TOTAL SHEETS	SHEET NO.
pwr\ill084EBIDINTEG\Illinois.gov\PIDOT\Documents\IDOT Offices\District 3\Projects\03666\DRAWING\03666F13-sht-schedule and-gps		CHECKED -	REVISED -			I-57	2016-2 WEED SPRAY	*	11	4
Default	PLOT SCALE = 101.7686' / in.	DATE -	REVISED -						CONTRACT NO. 66F13	
	PLOT DATE = 12/18/2015	DATE -	REVISED -			SHEET OF SHEETS STA. TO STA.			ILLINOIS FED. AID PROJECT	

SECOND APPLICATION (RODEO & ARSENAL) WEED SPRAY ON I-57

LOCATION	LENGTH FEET	WIDTH FEET	NUMBER OF LOCATIONS	AREA ACRES	RODEO GALLONS	ARSENAL GALLONS
I-57 NORTHBOUND - REFER TO SCHEDULE OF GPS LOCATIONS ON SHEET 7						
FORD COUNTY - STARTING AT APPROX. MP 257						
SIXTEEN LOCATIONS ON I-57 NB	20	20	16	0.147	0.11	0.07
IROQUOIS COUNTY						
STRETCH ALONG I-57 NB: INBOUND RAMPS TO NB MAIN LINE STATION REST AREA	300	10	1	0.069	0.05	0.03
STRETCH ALONG I-57 NB: DITCH LINE IN FRONT OF NB MAIN LINE STATION REST AREA	300	10	1	0.069	0.05	0.03
STRETCH ALONG I-57 NB: DITCH LINE AND OFF RAMP AT NB MAIN LINE STATION REST AREA	300	10	1	0.069	0.05	0.03
STRETCH ALONG I-57 N.B	1862	10	1	0.427	0.32	0.21
STRETCH ALONG I-57 N.B	2435	10	1	0.559	0.42	0.28
LOCATION ON I-57 NB	20	20	1	0.009	0.01	0.00
LOCATION ON I-57 N.B - SPRAY AT MP 269 ONE PATCH OF PHRAGMITES	20	20	1	0.009	0.01	0.00
TWO LOCATIONS ON I-57 NB	20	20	2	0.018	0.01	0.01
STRETCH ALONG I-57 NB - AT CULVERT	20	20	1	0.009	0.01	0.00
STRETCH ALONG I-57 NB: - SPRAY TO MP 272 BUCKLEY EXIT RAMP	4124	10	1	0.947	0.71	0.47
STRETCH ALONG I-57 NB - INFIELD NE QUADRANT OF INTERCHANGE NEAR EXIT 272	300	10	1	0.069	0.05	0.03
STRETCH ALONG I-57 NB: NEAR CREEK AND S.N. -0151	2547	10	1	0.585	0.44	0.29
STRETCH ALONG I-57 NB: NEAR CREEK AND S.N. -0151	1783	10	1	0.409	0.31	0.20
THREE LOCATIONS ON I-57 NB	20	20	3	0.028	0.02	0.01
STRETCH ALONG I-57 NB - NEAR MP 276	2575	10	1	0.591	0.44	0.30
LOCATION ON I-57 NB	20	20	1	0.009	0.01	0.00
STRETCH ALONG I-57 NB - NEAR MP 277	2284	10	1	0.524	0.39	0.26
STRETCH ALONG I-57 NB; PATCH OF PHRAGMITES	150	25	1	0.086	0.06	0.04
STRETCH ALONG I-57 NB - NEAR CREEK	456	10	1	0.105	0.08	0.05
STRETCH ALONG I-57 NB	1784	10	1	0.410	0.31	0.20
STRETCH ALONG I-57 NB: ONARGA, RIGHT SIDE OF RAMP MP 280 TO THE STOP SIGN	573	10	1	0.132	0.10	0.07
STRETCH ALONG I-57 NB: NE QUADRANT MP 280 ON RAMP TO JUST N. OF OVERPASS	8258	10	1	1.896	1.42	0.95
LOCATION ON I-57 NB	20	20	1	0.009	0.01	0.00
STRETCH ALONG I-57 NB: INFIELD AT EXIT 297 NE QUADRANT	312	10	1	0.072	0.05	0.04
THREE LOCATIONS ON I-57 NB: ON RAMP AT MP 297 (NE QUADRANT)	20	20	3	0.028	0.02	0.01
KANKAKEE COUNTY						
STRETCH ALONG I-57 NB: NEAR GAS EXIT 308 SIGN	5451	10	1	1.251	0.94	0.63
STRETCH ALONG I-57 NB: SHOULD INCLUDE MP 308-309	4125	10	1	0.947	0.71	0.47
NORTHBOUND TOTALS						
				9.48	7.1	4.7

PAY ITEM FOR THIS PAGE = (7.1+4.7) = 11.8 GALLONS OF WEED CONTROL, AQUATIC

FILE NAME =	USER NAME = lukkaridp	DESIGNED -	REVISED -	STATE OF ILLINOIS DEPARTMENT OF TRANSPORTATION	SCHEDULE	F.A.I. RTE.	SECTION	COUNTY	TOTAL SHEETS	SHEET NO.
p:\l\084EBID\INTEG\Illinois.gov\PWIDOT\Documents\IDOT Offices\District 3\Projects\0366\DRAWING\0366F13-sht-schedule and gps.dwg	DATE = 12/18/2015	CHECKED -	REVISED -			1-57	2016-2 WEED SPRAY	*	11	5
Default	PLOT SCALE = 101.7686' / in.	DATE -	REVISED -			CONTRACT NO. 66F13			ILLINOIS FED. AID PROJECT	
						SHEET	OF	SHEETS	STA.	TO STA.

SECOND APPLICATION (RODEO & ARSENAL) WEED SPRAY ON I-57

LOCATION	LENGTH FEET	WIDTH FEET	NUMBER OF LOCATIONS	AREA ACRES	RODEO GALLONS	ARSENAL GALLONS
I-57 SOUTHBOUND - REFER TO SCHEDULE OF GPS LOCATIONS ON SHEET 8						
KANKAKEE COUNTY - STARTING AT APPROX. MP 310						
EIGHT LOCATIONS ON I-57 SB	20	20	8	0.073	0.06	0.04
STRETCH NEAR MM 304 ON I-57 SB	1644	10	1	0.377	0.28	0.19
TWO LOCATIONS ON I-57 SB	20	20	2	0.018	0.01	0.01
IROQUOIS COUNTY						
STRETCH IN INFIELD NEAR RAMP: I-57 SB	867	10	1	0.199	0.15	0.10
THIRTEEN LOCATIONS ON SB I-57	20	20	13	0.119	0.09	0.06
STRETCH ALONG I-57 SB	9119	10	1	2.093	1.57	1.05
TWO LOCATIONS ON I57 SB	20	20	2	0.018	0.01	0.01
STRETCH ALONG I-57 SB	2478	10	1	0.569	0.43	0.28
STRETCH ALONG I-57 SB	6773	10	1	1.555	1.17	0.78
STRETCH ALONG I-57 SB	1071	10	1	0.246	0.18	0.12
I-57 SB: RAMP TO MAINLINE STATION REST AREA / ENTIRE RAMP INBOUND TO REST AREA	300	10	1	0.069	0.05	0.03
KANKAKEE COUNTY						
I-57 SB: OFF RAMP NEAR MM 261	300	10	1	0.069	0.05	0.03
I-57 SB: ON RAMP NEAR MM 261	300	10	1	0.069	0.05	0.03
LOCATION ON I-57 SB	20	20	1	0.009	0.01	0.00
STRETCH ALONG I-57 SB	1154	10	1	0.265	0.20	0.13
SOUTHBOUND TOTALS				5.75	4.3	2.9
GRAND TOTALS				15.2	11.4	7.6

APPLICATION RATES:

RODEO = 6 PINTS (96 OUNCES) / ACRE

ARSENAL = 4 PINTS (64 OUNCES) / ACRE

NON-IONIC SURFACTANT = 1 PINT / 100 GALLONS WATER

WATER = 20 GALLONS MINIMUM / ACRE

PAY ITEM FOR THIS PAGE = (4.3+2.9) = 7.2 GALLONS OF WEED CONTROL, AQUATIC

PROJECT TOTALS = (11.4 + 7.6) = 19.0 GALLONS OF WEED CONTROL, AQUATIC

FILE NAME =	USER NAME = lukkaridp	DESIGNED -	REVISED -	STATE OF ILLINOIS DEPARTMENT OF TRANSPORTATION	SCHEDULE	F.A.I. RTE.	SECTION	COUNTY	TOTAL SHEETS	SHEET NO.
p:\IL084EBIDINTEG\Illinois.gov\PWIDOT\Documents\DOT Offices\District 3\Projects\0366F13\Drawings\0366F13-sht-schedule_and-gps	DRAWN -	REVISED -	1-57			2016-2 WEED SPRAY	*	11	6	
PLOT SCALE = 101.7686' / in.	CHECKED -	REVISED -	CONTRACT NO. 66F13							
PLOT DATE = 12/18/2015	DATE -	REVISED -	ILLINOIS FED. AID PROJECT							
Default				SHEET OF SHEETS	STA. TO STA.					

I-57 Northbound- GPS Coordinates for Phragmites and Cattails

Latitude	Longitude	Latitude	Longitude	Latitude	Longitude
N40°24.567'	W088°07.471'				
N40°24.644'	W088°07.436'				
N40°24.946'	W088°07.305'	Stretch along I-57 NB: Spray to MP 272 Buckley exit ramp			
N40°25.029'	W088°07.267'	N40°35.608'	W088°03.631'		
N40°25.074'	W088°07.248'	N40°36.198'	W088°03.330'	Stretch along I-57 NB: NE Quadrant MP 280 on ramp to just N. of overpass	
N40°26.150'	W088°06.791'	Stretch along I-57 NB: Infield NE Quadrant of Interchange near exit 272		N40°43.021'	W088°01.644'
N40°26.222'	W088°06.772'	40°36.352'	W088°03.177'	N40°44.094'	W088°00.656'
N40°26.308'	W088°06.751'	Stretch along I-57 NB: Near creek and SN: 0151			
N40°26.759'	W088°06.720'	40°36.424'	W088°03.130'	N40°45.670'	W088°00.392
N40°26.980'	W088°06.722'	40°36.728'	W088°02.751'	Stretch along I-57 NB: Infield @ exit 297 NE Quadrant	
N40°27.498'	W088°06.719'	Stretch along I-57 NB: Near creek and SN: 0151		N40°55.798'	W087°55.671'
N40°28.208'	W088°06.374'	N40°36.873'	W088°02.573'	N40°55.833'	W087°55.627'
N40°28.249'	W088°06.350'	N40°37.127'	W088°02.380'	Points along I-57 NB: On Ramp @ MP 297 (NE Quadrant)	
N40°28.322'	W088°06.308'			N40°55.785'	W087°55.567'
N40°28.401'	W088°06.261'	N40°37.299'	W088°02.319'	N41°00.141'	W087°54.299'
N40°28.458'	W088°06.228'	N40°37.405'	W088°02.302'	N41°00.599'	W087°54.298'
		N40°37.812'	W088°02.308'		
I-57 NB: Inbound Ramp to NB Mainline Station Rest Area		Stretch along I-57 NB: Near MP 276		Stretch along I-57 NB: Near Gas Exit 308 Sign	
N40°32.945'	W088°03.701'	N40°38.964'	W088°02.082'	N41°03.014'	W087°53.386'
I-57 NB: Ditch line in front of NB Mainline Station Rest Area		N40°39.382'	W088°02.097'	N41°03.876'	W087°53.055'
N40°32.987'	W088°03.685'	40°39.501'	W088°02.101'	Stretch along I-57 NB: Should include MP 308-309	
I-57 NB: Ditch line and off ramp at NB Mainline Station Rest Area		Stretch along I-57 NB: Near MP 277		N41°04.611'	W087°51.958'
N40°33.160'	W088°03.630'	N40°39.848'	W088°02.114'	N41°04.634'	W087°51.059'
Stretch along I-57 NB		N40°40.224'	W088°02.128'		
N40°33.215'	W088°03.631'	Stretch along I-57 NB: Patch of Phragmites appx.. 25ft wide x 150ft long		Notes:	1. Spray each culvert where there is a stand of cattails
N40°33.520'	W088°03.595'	N40°40.670'	W088°02.127'		2. MP 293-302 is not included/excluding some ramps
Stretch along I-57 NB		Stretch along I-57 NB: Near Creek			
N40°33.656'	W088°03.597'	N40°40.781'	W088°02.097'		
N40°34.057'	W088°03.604'	N40°40.851'	W088°02.069'		
N40°34.493'	W088°03.612'	Stretch along I-57 NB			
Stretch along I-57 NB		N40°40.943'	W088°02.016'		
Spray @ MP 269 one patch of Phragmites		N40°41.193'	W088°01.818'		
N40°34.595'	W088°03.614' (Culvert)	Stretch along I-57 NB: Onarga, Right side of ramp MP 280 to the stop sign			
N40°34.726'	W088°03.615'	N40°42.807'	W088°01.611'		
		N40°42.886'	W088°01.540'		

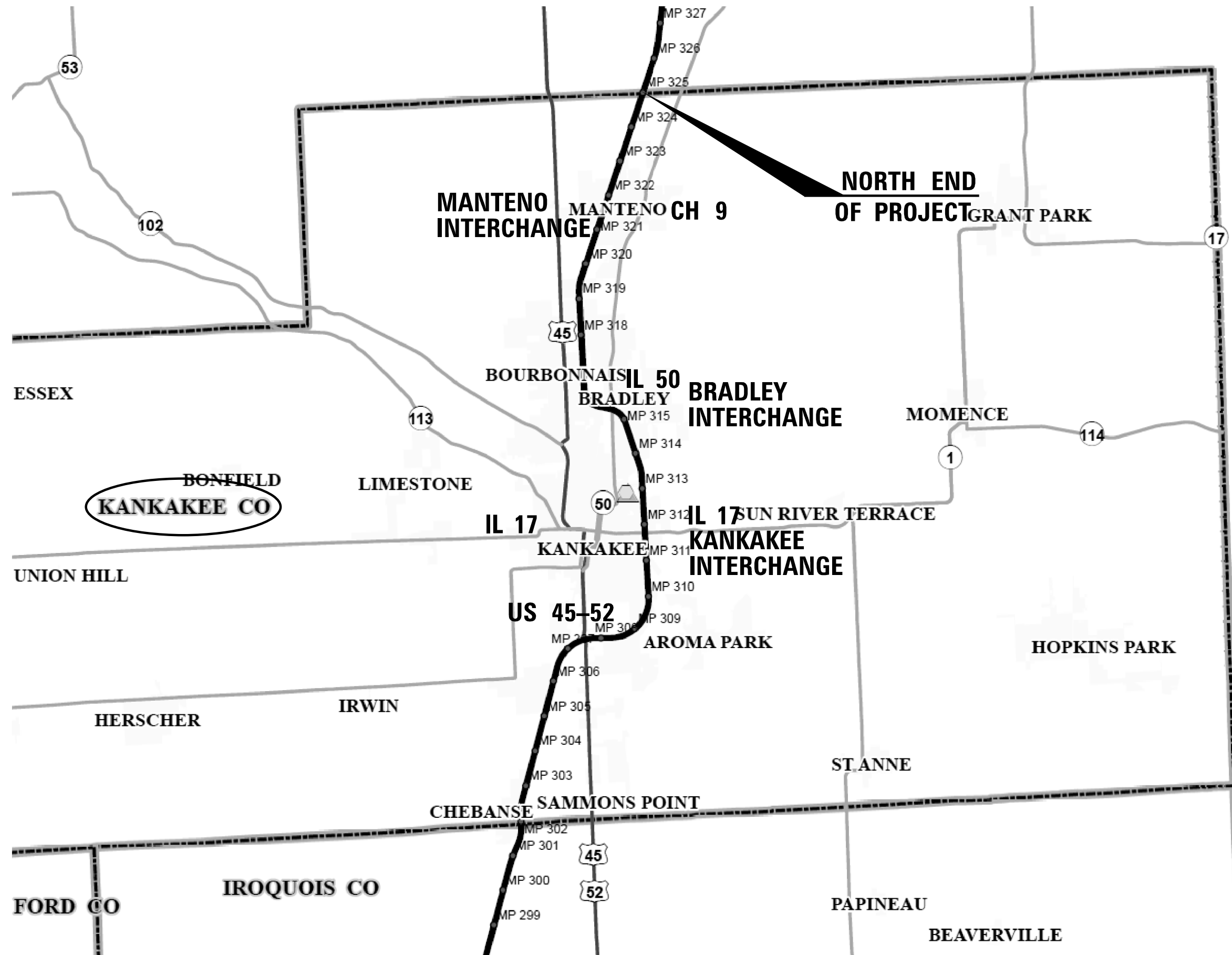
I-57 Southbound- GPS Coordinates for Phragmites and Cattails

	Latitude	Longitude
	N41°04.783'	W087°50.647'
	N41°04.686'	W087°50.899'
	N41°04.632'	W087°51.643'
	N41°04.633'	W087°51.729'
	N41°04.517'	W087°52.455'
	N41°03.997'	W087°53.035'
	N41°03.758'	W087°53.123'
	N41°02.565'	W087°53.572'
Stretch near MM 304 ON I-57 SB		
	N41°01.950'	W087°53.824'
	N41°01.704'	W087°53.915'
	N41°01.248'	W087°54.090' (Near MM 303)
	N41°00.875'	W087°54.233'
Areas along the highway between MP 293-302 are not included/excluding some ramps		
Stretch Infield near ramp: I-57 SB		
	N40°53.017'	W087°58.081'
	N40°52.903'	W087°58.187'
	N40°51.138	W087°59.398'
	N40°46.687	W088°00.447'
	N40°45.562	W088°00.418' (Near exit 283 Gilman, IL)
	N40°44.172'	W088°00.615'
	N40°44.108'	W088°00.679'
	N40°43.603'	W088°01.273'
	N40°43.580'	W088°01.300'
	N40°43.559'	W088°01.325'
	N40°43.495'	W088°01.400'
	N40°43.377'	W088°01.537'
	N40°42.858'	W088°01.711'
	N40°42.749'	W088°01.706'
	N40°42.563'	W088°01.697'
Stretch I-57 SB	N40°42.198'	W088°01.680
	N40°40.776'	W088°02.128'
	N40°40.046'	W088°02.149'
	N40°39.489'	W088°02.130'

	Latitude	Longitude
Stretch along I-57 SB		
	N40°39.408'	W088°02.128'
	N40°39.000'	W088°02.113'
Stretch along I-57 SB		
	N40°37.036'	W088°02.465'
	N40°36.343'	W088°03.277'
Stretch along I-57 SB		
	N40°34.588'	W088°03.642'
	N40°34.446'	W088°03.638'
I-57 SB: Ramp to Mainline Station Rest Area/Entire Ramp Inbound to Rest Area		
	N40°33.783'	W088°03.645'
I-57 SB: Off Ramp near MM 261		
	N40°27.486'	W088°06.767'
I-57 SB: On Ramp near MM 261		
	N40°27.173'	W088°06.776'
	N40°26.151'	W088°06.820
Stretch along I-57 SB		
	N40°25.201'	W088°07.224'
	N40°25.025'	W088°07.301'

- Notes:
1. Spray each culvert where there is a stand of cattails
 2. MP 293-302 is not included/excluding some ramps

FILE NAME =	USER NAME = lukkaridp	DESIGNED -	REVISED -	STATE OF ILLINOIS DEPARTMENT OF TRANSPORTATION	GPS COORDINATES - SB	F.A.I. RTE.	SECTION	COUNTY	TOTAL SHEETS	SHEET NO.
pw:\IL084EBIDINTEG\Illinois.gov\PIDOT\Documents\IDOT Offices\District 3\Projects\0366\DRAWING\0366F13-sht-schedule and-gps-coordinates.dwg		CHECKED -	REVISED -			I-57	2016-2 WEED SPRAY	•	11	8
Default	PLOT SCALE = 104.0306' / in.	DATE -	REVISED -			CONTRACT NO. 66F13		ILLINOIS FED. AID PROJECT		
	PLOT DATE = 12/18/2015					SHEET OF SHEETS		STA. TO STA.		



FILE NAME =	USER NAME = lukkaridp	DESIGNED -	REVISED -
p:\IL\084EBID\INTEG\illinois.gov\PWIDOT\Documents\IDOT Offices\District 3\Projects\0366\DRAWING\0366F13-sht-details.dgn		REVISED -	REVISED -
	PLOT SCALE = 102.9476' / in.	CHECKED -	REVISED -
	PLOT DATE = 12/18/2015	DATE -	REVISED -

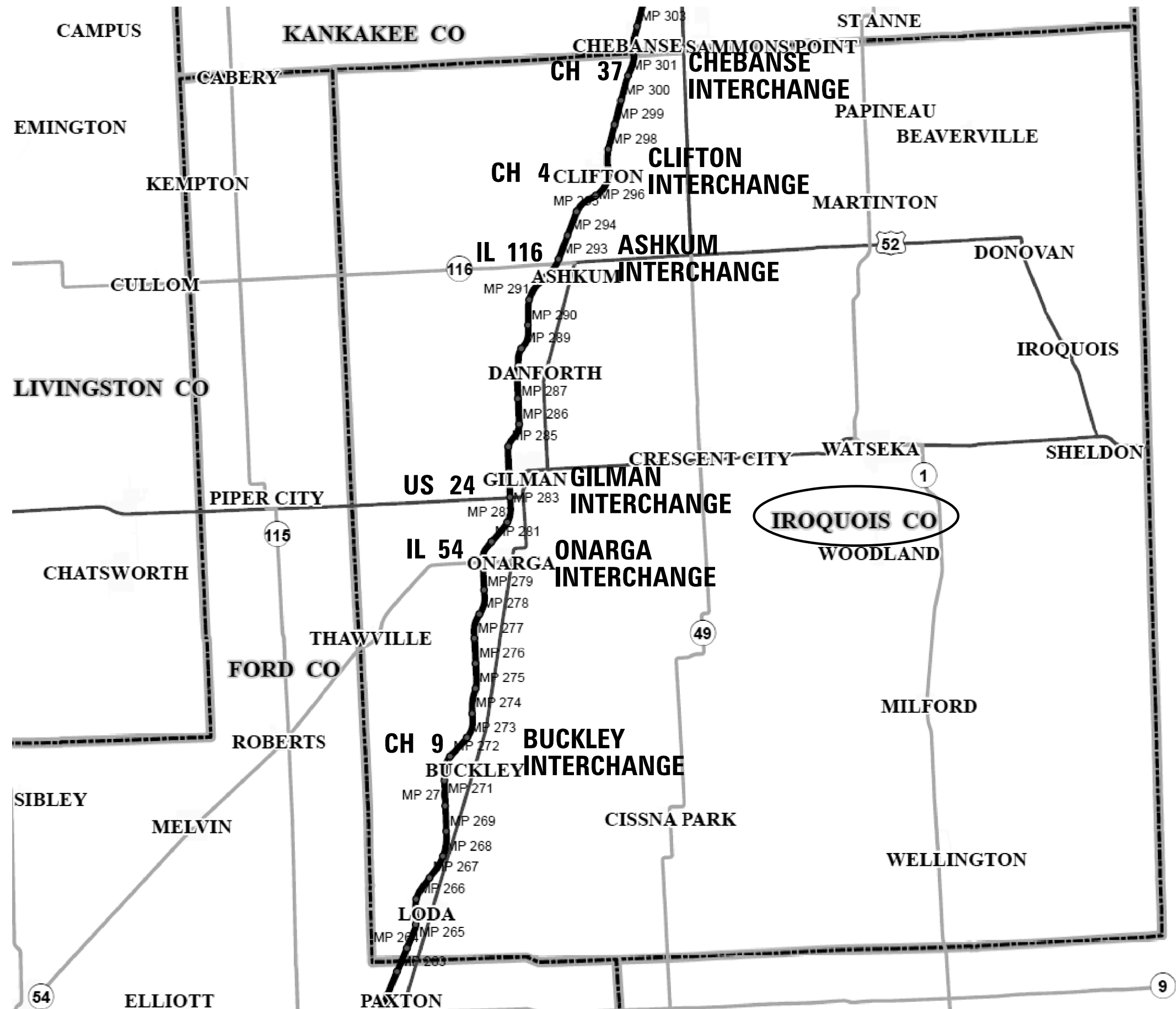
**STATE OF ILLINOIS
DEPARTMENT OF TRANSPORTATION**

DETAILED LOCATION MAP - KANKAKEE COUNTY

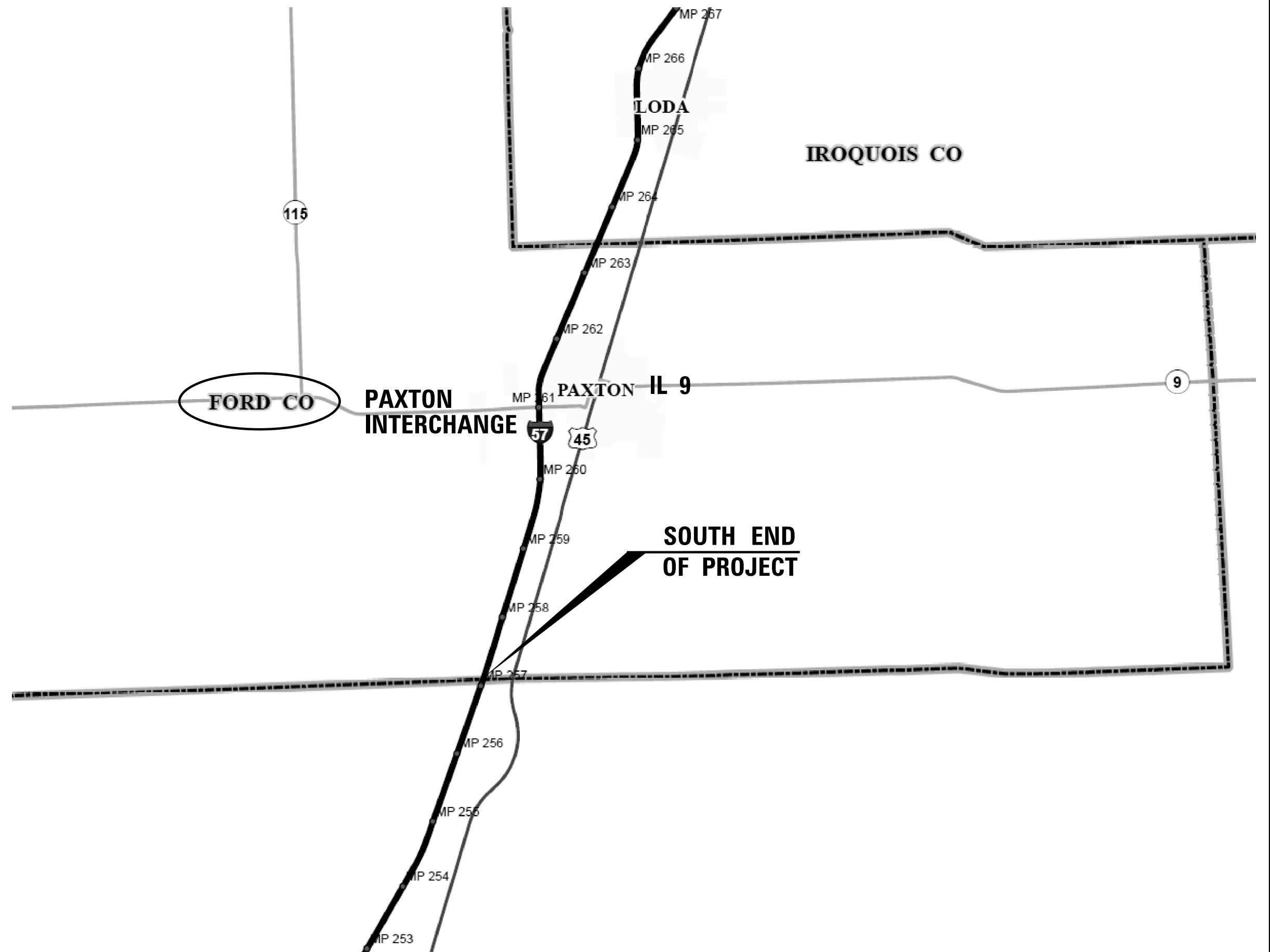
SCALE: SHEET NO. OF SHEETS STA. TO STA.

F.A.I. RTE.	SECTION	COUNTY	TOTAL SHEETS	SHEET NO.
1-57	2016-2 WEED SPRAY	*	11	9
ILLINOIS FED. AID PROJECT			CONTRACT NO. 66F13	

* KANKAKEE, IROUOIS, & FORD COUNTIES



FILE NAME =	USER NAME = lukkaridp	DESIGNED -	REVISED -	STATE OF ILLINOIS DEPARTMENT OF TRANSPORTATION	DETAILED LOCATION MAP - IROQUOIS COUNTY			F.A.I. RTE.	SECTION	COUNTY	TOTAL SHEETS	SHEET NO.
p:\11084EBID\INTEG\Illinois.gov\PWIDOT\Documents\IDOT Offices\District 3\Projects\0366\Drawings\0366F13-sht-details.dgn	PLOT SCALE = 102.9476 1/1 in.	CHECKED -	REVISED -					1-57	2016-2 WEED SPRAY	•	11	10
PLOT DATE = 12/18/2015	DATE -	REVISED -	REVISED -		SCALE: SHEET NO. OF SHEETS STA. TO STA.			CONTRACT NO. 66F13				
							ILLINOIS FED. AID PROJECT					



FILE NAME =	USER NAME = lukkeridp	DESIGNED -	REVISED -
p:\11\084EBIDINTEG\Illinois.gov\FWIDOT\Documents\DOT Offices\District 3\Projects\0366F13\shd-details.dgn		DRAWN -	REVISED -
	PLOT SCALE = 102.9476' / in.	CHECKED -	REVISED -
	PLOT DATE = 12/18/2015	DATE -	REVISED -

**STATE OF ILLINOIS
DEPARTMENT OF TRANSPORTATION**

DETAILED LOCATION MAP - FORD COUNTY

SCALE: SHEET NO. OF SHEETS STA. TO STA.

F.A.I. RTE.	SECTION	COUNTY	TOTAL SHEETS	SHEET NO.
1-57	2016-2 WEED SPRAY	*	11	11
CONTRACT NO. 66F13			ILLINOIS FED. AID PROJECT	

* KANKAKEE, IROQUOIS, & FORD COUNTIES