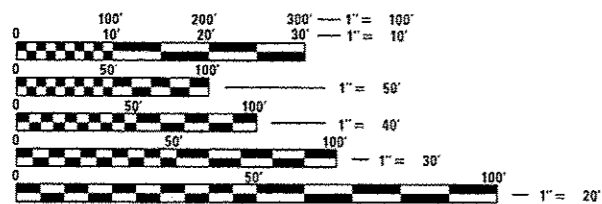


INDEX OF SHEETS

- 1 COVER SHEET
- 2 GENERAL NOTES AND COMMITMENTS
- 3 SUMMARY OF QUANTITIES
- 4 CALENDAR OF LANDSCAPING MAINTENANCE
- 5 SCHEDULE OF EXISTING LANDSCAPING ITEMS
- 6 OVERALL PLAN
- 7-12 PLAN SHEETS

HIGHWAY STANDARDS

- 701001-02
- 701006-05
- 701011-04
- 701101-04
- 701106-02
- 701201-04
- 701301-04
- 701400-08
- 701406-09
- 701411-09
- 701426-07
- 701428
- 701901-04



FULL SIZE PLANS HAVE BEEN PREPARED USING STANDARD ENGINEERING SCALES. REDUCED SIZED PLANS WILL NOT CONFORM TO STANDARD SCALES. IN MAKING MEASUREMENTS ON REDUCED PLANS, THE ABOVE SCALES MAY BE USED.

J.U.L.I.E.
JOINT UTILITY LOCATION INFORMATION FOR EXCAVATION
1-800-892-0123
OR 811

PROJECT ENGINEER: CHRISTOPHER MAUSHARD 309-671-3453
LANDSCAPE ARCHITECT: JAMES ALWILL 309-671-4484
PROJECT MANAGER: SOBHI LABABIDI/RAYMOND SAMARA 309-671-3460

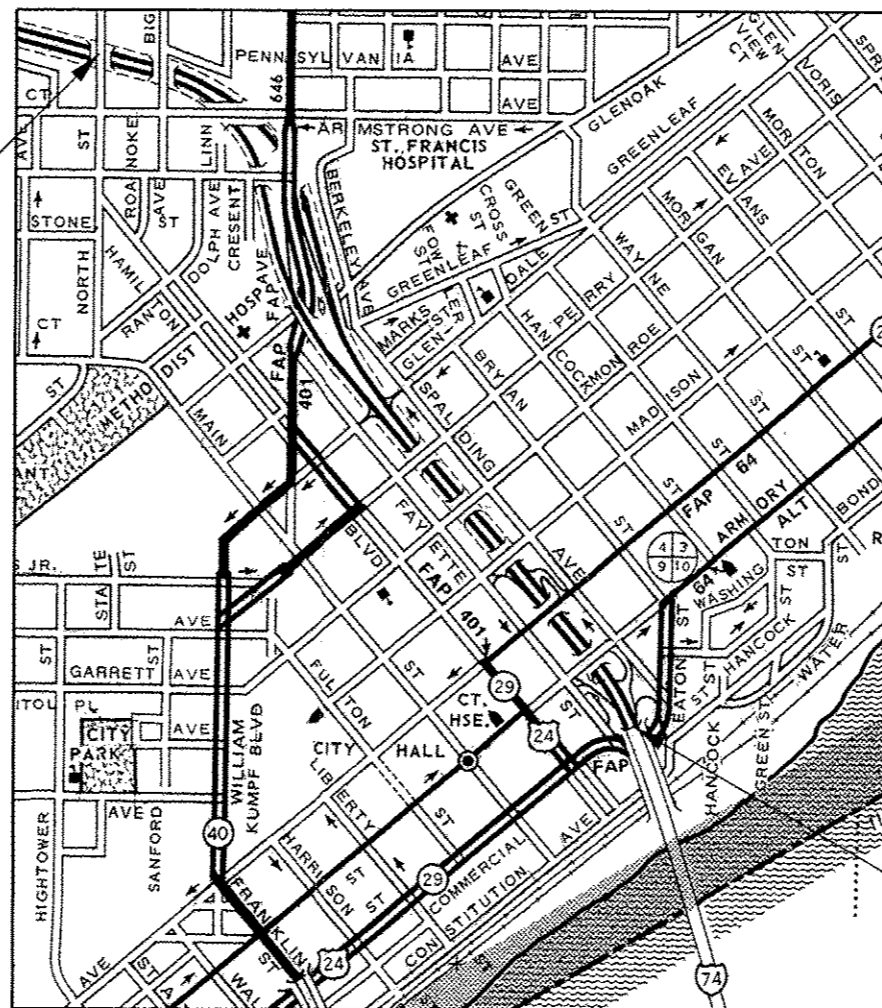
CONTRACT NO. 68C73
CATALOG NO. 035309-00D

STATE OF ILLINOIS
DEPARTMENT OF TRANSPORTATION
DIVISION OF HIGHWAYS
**PROPOSED
HIGHWAY PLANS**

FAI ROUTE 74 (I-74)
SECTION 72-[8LS-8,(9,9-1)LS-7]
PROJECT
TYPE of IMPROVEMENT: LANDSCAPE MAINTENANCE
PEORIA COUNTY

C-94-095-15

PROJECT BEGINS
STA. 148 + 50

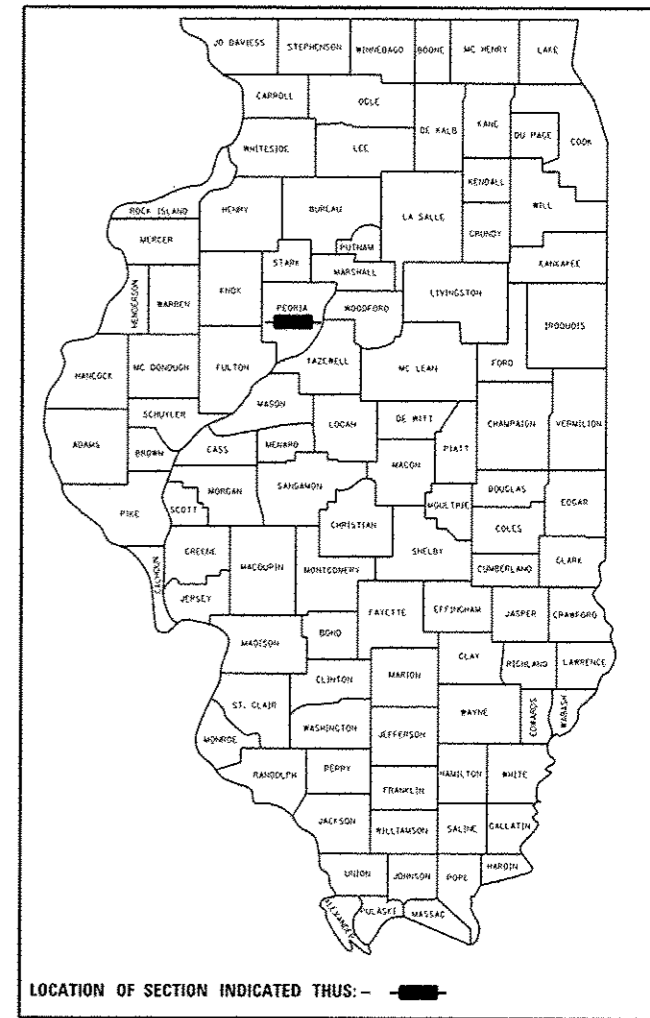


PROJECT ENDS
STA. 150 + 400

GROSS LENGTH = 6,335 FT. = 1.20 MILE
NET LENGTH = 6,335 FT. = 1.20 MILE

| F.A.I. RTE. | SECTION | COUNTY | TOTAL SHEETS | SHEET NO. |
|-------------|------------------------|----------|--------------------|-----------|
| 74 | 72-[8LS-8,(9,9-1)LS-7] | PEORIA | 12 | 1 |
| | | ILLINOIS | CONTRACT NO. 68C73 | |

D-94-055-15



LOCATION OF SECTION INDICATED THUS: - [black rectangle]

PROJECT DESCRIPTION:

THE WORK ON THIS PROJECT CONSISTS OF LANDSCAPING MAINTENANCE ALONG I-74 FROM ELLIS ST. IN PEORIA TO THE ILLINOIS RIVER

STATE OF ILLINOIS
DEPARTMENT OF TRANSPORTATION
DIVISION OF HIGHWAYS

SUBMITTED 12/22 2015
Renail G. Bennett
DEPUTY DIRECTOR OF HIGHWAYS, REGION ENGINEER

Jan 29 2016
Maureen M. Addis P.E.
ENGINEER OF DESIGN AND ENVIRONMENT

Jan 29 2016
Chris Osman P.E.
DIRECTOR OF HIGHWAYS, CHIEF ENGINEER

**PRINTED BY THE AUTHORITY
OF THE STATE OF ILLINOIS**

COMMITMENTS

COMMITMENTS ARE NOT TO BE ALTERED WITHOUT THE WRITTEN CONSENT OF ALL PARTIES TO WHICH THE COMMITMENT WAS MADE

NO COMMITMENTS HAVE BEEN MADE ON THIS PROJECT.

JOB SPECIFIC NOTES

THE CONTRACTOR WILL BE RESPONSIBLE FOR FIELD VERIFICATION OF LOCATIONS FOR ALL LANDSCAPING ITEMS.

THE REMOVAL OF DEAD UNDERBRUSH, DEBRIS, LITTER, AND OTHER MISCELLANEOUS ITEMS SHALL BE COMPLETED AND WILL BE CONSIDERED INCLUDED IN THE COST OF THE ASSOCIATED PAY ITEMS.

"SHRUB CARE" SHALL INCLUDE THE TRIMMING OF SHRUBS AROUND JUNCTION BOXES AND WILL BE CONSIDERED INCLUDED IN THE AGREED UNIT COST FOR "SHRUB CARE".

CALENDAR OF MAINTENANCE

| WORK DATES | | MAINTENANCE WORK |
|------------|---------|---|
| FROM | TO | |
| June 1 | June 30 | Mow turf areas to a height of 3 inches by IDOT. |
| June 1 | June 30 | Perennial plant care. |
| June 1 | June 30 | Woody plant care. Work cycle must be complete and acceptable on the inspection date of June 30. |
| | June 30 | Inspection of all woody and perennial plant care. |

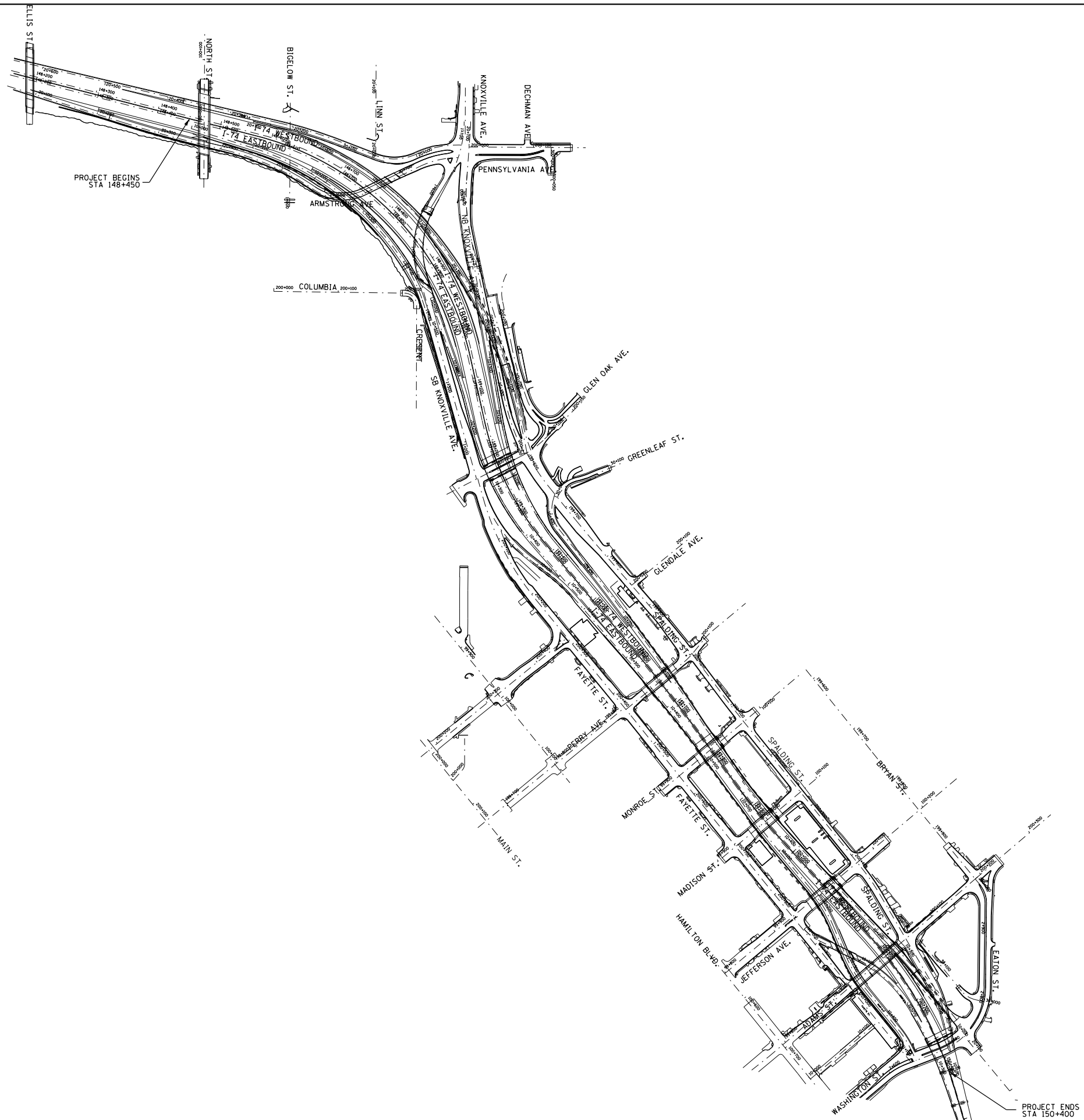
| SCHEDULE OF EXISTING PLANTINGS | | | | | | | LOCATION | | | | | |
|--------------------------------|---------------------------------------|-------------------------------|---|------|-------|------|----------|-------|------|------|------|--|
| KEY | ITEM | COMMON NAME | SIZE | UNIT | TOTAL | L1 | L2 | L3 | L4 | L5 | L6 | |
| | DECIDUOUS TREES | | | | | | | | | | | |
| CC | CARYA CORDIFORMIS | BITTERNUT HICKORY | 1-1/2" CALIPER, BALLED AND BURLAPPED | EACH | 14 | 4 | 0 | 0 | 8 | 2 | 0 | |
| GD | GYMNOCLADUS DIOICUS | KENTUCKY COFFEETREE | 2-1/2" CALIPER, BALLED AND BURLAPPED | EACH | 20 | 0 | 0 | 0 | 19 | 1 | 0 | |
| QA | QUERCUS BICOLOR | SWAMP OAK | 2" CALIPER, BALLED AND BURLAPPED | EACH | 50 | 6 | 19 | 3 | 1 | 9 | 12 | |
| AN | ACER NIGRUM | BLACK MAPLE | 2-1/2" CALIPER, BALLED AND BURLAPPED | EACH | 14 | 5 | 8 | 0 | 0 | 1 | 0 | |
| GB | GINKGO BILOBA | GINKGO | 3" CALIPER, BALLED AND BURLAPPED | EACH | 19 | 4 | 8 | 0 | 0 | 0 | 7 | |
| GT | GLEDITSIA TRIACANTHOS INERMIS SKYLINE | SKYLINE THORNLESS HONEYLOCUST | 2-1/2" CALIPER, BALLED AND BURLAPPED | EACH | 14 | 0 | 0 | 2 | 0 | 5 | 7 | |
| UR | ULMUS 'REGAL | REGAL ELM | 2-1/2" CALIPER, BALLED AND BURLAPPED | EACH | 19 | 0 | 19 | 0 | 0 | 0 | 0 | |
| | ORNAMENTAL TREES | | | | | | | | | | | |
| AC | AMELANCHIER X GRANDIFLORA | AMELANCHIER X GRANDIFLORA | 6' HEIGHT, SHRUB FORM, BALLED AND BURLAPPED | EACH | 21 | 0 | 5 | 6 | 6 | 3 | 1 | |
| SA | SYRINGA RETICULATA | SYRINGA RETICULATA | 7' HEIGHT, CLUMP FORM, BALLED AND BURLAPPED | EACH | 42 | 4 | 18 | 0 | 0 | 0 | 20 | |
| SP | SYRINGA PEKINENSIS | SYRINGA PEKINENSIS | 7' HEIGHT, CLUMP FORM, BALLED AND BURLAPPED | EACH | 7 | 0 | 0 | 0 | 7 | 0 | 0 | |
| MP | MALUS PRAIRIFIRE | PRAIRIFIRE CRABAPPLE | 6' HEIGHT, CLUMP FORM, BALLED AND BURLAPPED | EACH | 20 | 6 | 3 | 5 | 1 | 5 | 0 | |
| | EVERGREEN TREES | | | | | | | | | | | |
| PN | PINUS NIGRA | AUSTRIAN PINE | 3' HEIGHT, CONTAINER | EACH | 60 | 2 | 22 | 6 | 13 | 11 | 6 | |
| | SHRUBS | | | | | | | | | | | |
| AF | AMOUPHA FRUITCOSA | INDIGO BUSH | CONTAINER GROWN, 3-GALLON | EACH | 91 | 0 | 62 | 0 | 0 | 29 | 0 | |
| FS | FORSYTHIA NORTHERN SUN | NORTHERN SUN BORDER FORSYTHIA | 3' HEIGHT, CONTAINER | EACH | 489 | 0 | 90 | 0 | 0 | 204 | 195 | |
| HV | HAMAMELIS VERNALIS | VERNAL WITCH HAZEL | 2' HEIGHT, BALLED AND BURLAPPED | EACH | 187 | 0 | 167 | 0 | 20 | 0 | 0 | |
| HA | HYDRANGEA ARBORESCENS ANNABELLE | ANNABELLE SMOOTH HYDRANGEA | 2' HEIGHT CONTAINER | EACH | 22 | 0 | 0 | 5 | 17 | 0 | 0 | |
| PA | PEROVSKIA ATRIPLICIFOLIA | PEROVSKIA ATRIPLICIFOLIA | PEROVSKIA ATRIPLICIFOLIA | EACH | 790 | 0 | 380 | 410 | 0 | 0 | 0 | |
| RA | RHUS AROMATICA | FRAGRANT SUMAC | 2' WIDTH, CONTAINER | EACH | 2054 | 69 | 640 | 0 | 777 | 184 | 384 | |
| RG | RHUS GLABRA | SMOOTH SUMAC | 3' HEIGHT, CONTAINER | EACH | 663 | 68 | 418 | 165 | 0 | 12 | 0 | |
| SPA | SYRINGA PATULA MISS KIM | MISS KIM MANCHURIAN LILAC | 2' HEIGHT, CONTAINER | EACH | 824 | 0 | 365 | 296 | 63 | 0 | 100 | |
| RS | RHODOTYPOS SCANDENS | BLACK JETBEAD | 3' HEIGHT, CONTAINER | EACH | 1010 | 290 | 225 | 435 | 24 | 36 | 0 | |
| RH | ROBINIA HISPIDA | BRISTLY LOCUST | 3' HEIGHT, CONTAINER | EACH | 351 | 0 | 0 | 100 | 0 | 89 | 162 | |
| RR | ROSA RUGOSA X MEIDOMONAC BONICA | BONICA RUGOSO ROSA | 3' HEIGHT, CONTAINER | EACH | 155 | 0 | 0 | 155 | 0 | 0 | 0 | |
| RRC | ROSA RUGOSA X CHUCKLES | CHUCKLES RUGOSA ROSA | 3' HEIGHT, CONTAINER | EACH | 1050 | 0 | 220 | 570 | 330 | 0 | 130 | |
| | EVERGREEN SHRUBS | | | | | | | | | | | |
| JH | JUNIPERUS HORIZONTALIS HUGHES | HUGHES CREEPING JUNIPER | 18" WIDTH, CONTAINER | EACH | 920 | 0 | 0 | 260 | 144 | 297 | 219 | |
| JC | JUNIPERUS CHINENSIS | KALLAYS COMPACTA | 18" WIDTH, CONTAINER | EACH | 958 | 0 | 347 | 290 | 122 | 117 | 82 | |
| | VINES | | | | | | | | | | | |
| PQ | PARTHENOCISSUS QUINQUEFOLIA | VIRGINIA CREEPER | 1-GALLON POT | EACH | 291 | 40 | 65 | 0 | 56 | 74 | 56 | |
| JT | PARTHENOCISSUS TRICUSPIDATA | BOSTON IVY | 1-GALLON POT | EACH | 72 | 48 | 0 | 0 | 0 | 24 | 0 | |
| CT | CLEMATIS MAXIMOWICZIANA | SWEET AUTUMN CLEMATIS | 3-GALLON POT | EACH | 85 | 14 | 9 | 0 | 62 | 0 | 0 | |
| CR | CAMPSIS RADICAN | MINNESOTA TRUMPET VINE | 1-GALLON POT | EACH | 45 | 0 | 0 | 0 | 21 | 24 | 0 | |
| LS | LONICERA SEMPERVIRENS | HONEYSUCKLE | 1-GALLON POT | EACH | 567 | 8 | 26 | 0 | 0 | 418 | 115 | |
| | PERENNIALS AND GROUNDCOVERS | | | | | | | | | | | |
| | PERENNIAL PLANTS, WILDFLOWERS | PERENNIAL PLANTS, WILDFLOWERS | | HA | 0.19 | 0.07 | 0.03 | 0.00 | 0.00 | 0.00 | 0.09 | |
| | PERENNIAL PLANTS, FOR SUN | PERENNIAL PLANTS, FOR SUN | 1-GALLON POT, 12" O.C. | EACH | 28103 | 2153 | 4965 | 11750 | 0 | 0 | 9235 | |
| | MOBILIZATION | | | | | | | | | | | |
| | TRAFFIC CONTROL AND PROTECTION | | | L.S. | 1 | | | | | | | |
| | (SPECIAL) | | | L.S. | 1 | | | | | | | |

LEGEND:

- L1 LANDSCAPE LAYOUT-1
- L2 LANDSCAPE LAYOUT-2
- L3 LANDSCAPE LAYOUT-3
- L4 LANDSCAPE LAYOUT-4
- L5 LANDSCAPE LAYOUT-5
- L6 LANDSCAPE LAYOUT-6

THIS SCHEDULE IS PROVIDED FOR INFORMATION ON LOCATION OF EXISTING PLANTINGS

| | | | | | | | | | | | | | |
|-------------|-----------------------------|------------|-----------|---|--|--|--|--|--------------------|------------------------|--------|-----------------|--------------|
| FILE NAME = | USER NAME = keathbr | DESIGNED - | REVISED - | STATE OF ILLINOIS DEPARTMENT OF TRANSPORTATION | SCHEDULE OF LANDSCAPING ITEMS FOR INFORMATIONAL PURPOSES ONLY | | | | F.A.I RTE. | SECTION | COUNTY | TOTAL SHEETS | SHEET NO. |
| Default | PLOT SCALE = 40.0000' / in. | DRAWN - | REVISED - | | | | | | 74 | 72-[8]S-8,(9,9-1)]S-7] | PEORIA | 12 | 4 |
| | PLOT DATE = 12/23/2015 | CHECKED - | REVISED - | | SCALE: SHEET OF SHEETS STA. TO STA. | | | | CONTRACT NO. 68C73 | | | | |
| | | DATE - | REVISED - | | ILLINOIS FED. AID PROJECT | | | | | | | | |



PROJECT BEGINS
STA 148+450

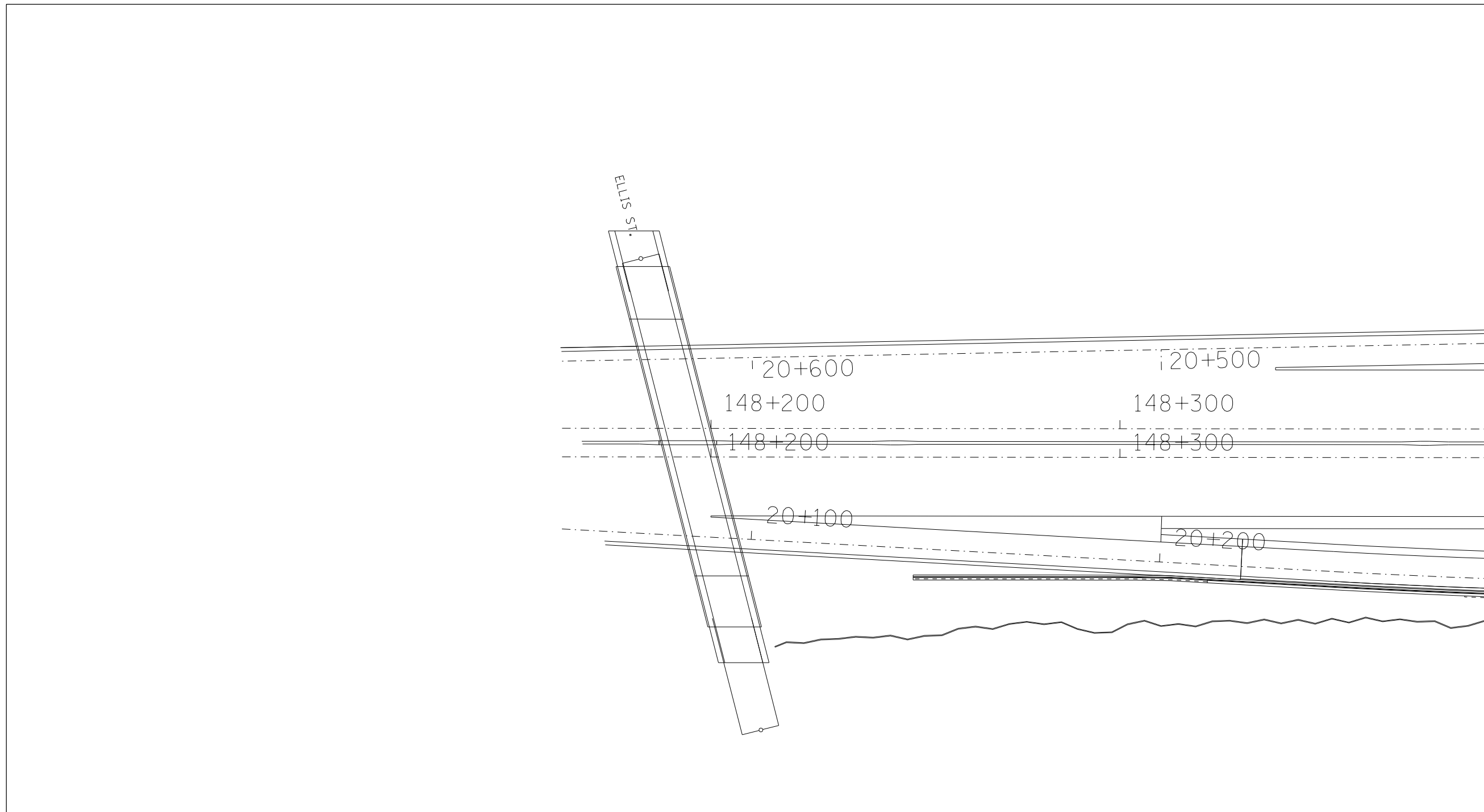
PROJECT ENDS
STA 150+400

| | | | |
|-------------|-----------------------------|------------|-----------|
| FILE NAME = | USER NAME = keathbr | DESIGNED - | REVISED - |
| Default | | DRAWN - | REVISED - |
| | PLOT SCALE = 40.0000' / in. | CHECKED - | REVISED - |
| | PLOT DATE = 12/23/2015 | DATE - | REVISED - |

**STATE OF ILLINOIS
DEPARTMENT OF TRANSPORTATION**

| | | | | |
|------------------|-------|----|--------|--------------|
| PLAN VIEW | | | | |
| SCALE: | SHEET | OF | SHEETS | STA. TO STA. |

| F.A.I. RTE. | SECTION | COUNTY | TOTAL SHEETS | SHEET NO. |
|---------------------------|------------------------|--------|--------------|-----------|
| 74 | 72-[8LS-8,(9,9-1)LS-7] | PEORIA | 12 | 5 |
| CONTRACT NO. 68C73 | | | | |
| ILLINOIS FED. AID PROJECT | | | | |



LEGEND

- VINES ON SOUND/RETAINING WALL
- SHRUBS
- EVERGREEN TREE
- SMALL ORNAMENTAL TREE
- SHADE TREE (5' DIA. MULCH SAUCER-TYP. -FOR ALL TREES & SHRUBS)
- PERENNIAL PLANTS, WILDFLOWERS
- PERENNIAL PLANTS, FOR SUN
- PERENNIAL PLANTS KEY QUANTITY OF SPECIFIED PLANT
- PLANT KEY QUANTITY OF SPECIFIED PLANT

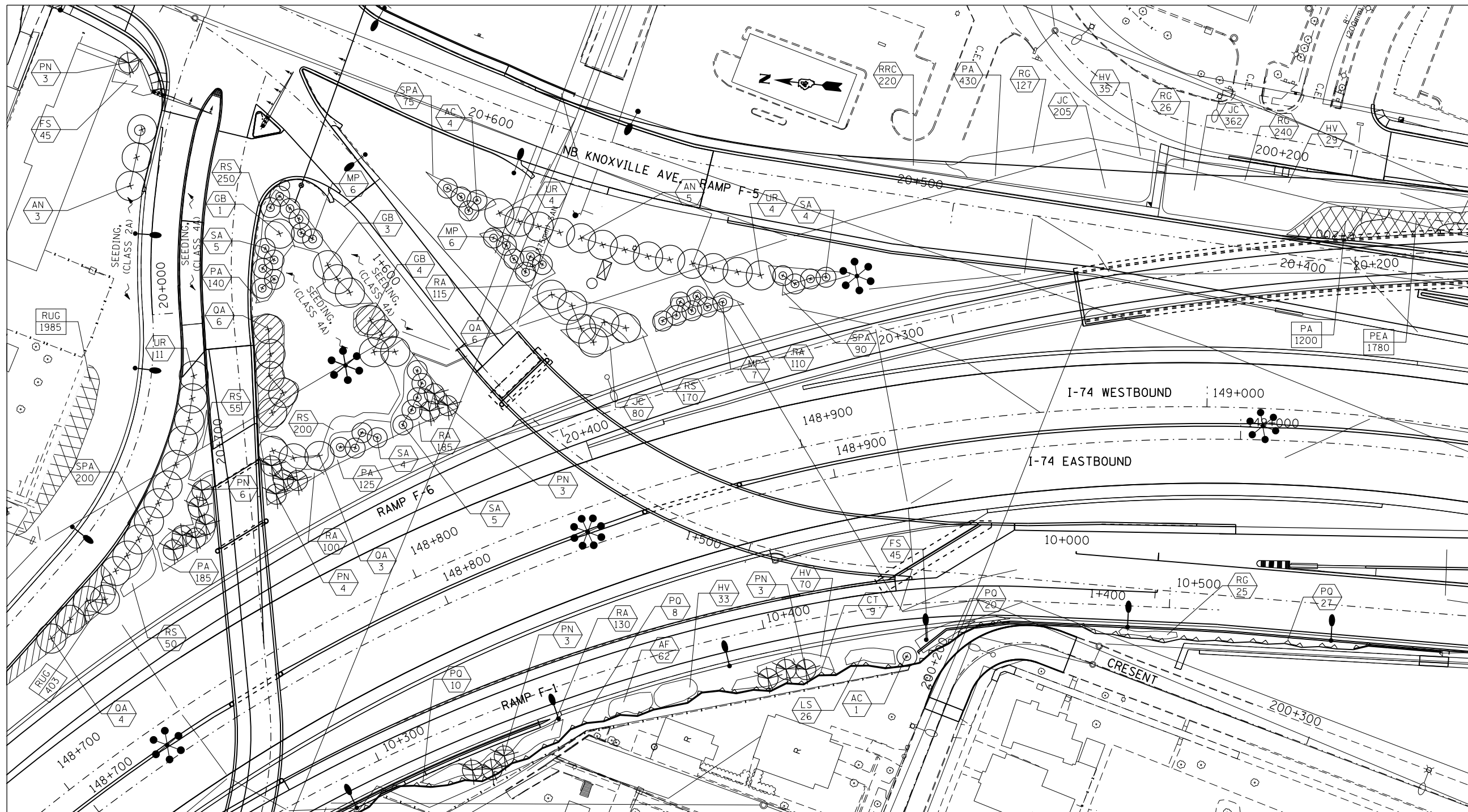
| | | | |
|-------------|-----------------------------|------------|-----------|
| FILE NAME = | USER NAME = keathbr | DESIGNED - | REVISED - |
| | | DRAWN - | REVISED - |
| | PLOT SCALE = 40.0000' / in. | CHECKED - | REVISED - |
| Default | PLOT DATE = 12/23/2015 | DATE - | REVISED - |

**STATE OF ILLINOIS
DEPARTMENT OF TRANSPORTATION**

PLAN SHEET-LAYOUT 1

SCALE: SHEET OF SHEETS STA. TO STA.

| F.A.I. RTE. | SECTION | COUNTY | TOTAL SHEETS | SHEET NO. |
|---------------------------|------------------------|--------|--------------|-----------|
| 74 | 72-[8]S-8,(9,9-1)LS-7] | PEORIA | 12 | 6 |
| CONTRACT NO. 68C73 | | | | |
| ILLINOIS FED. AID PROJECT | | | | |



LEGEND

- VINES ON SOUND/RETAINING WALL
- SHRUBS
- EVERGREEN TREE
- SMALL ORNAMENTAL TREE
- SHADE TREE (5' DIA. MULCH SAUCER-TYP. -FOR ALL TREES & SHRUBS)
- PERENNIAL PLANTS, WILDFLOWERS
- PERENNIAL PLANTS, FOR SUN
- PERENNIAL PLANTS KEY QUANTITY OF SPECIFIED PLANT
- PLANT KEY QUANTITY OF SPECIFIED PLANT

| | | | |
|-------------|-----------------------------|------------|-----------|
| FILE NAME = | USER NAME = keathbr | DESIGNED - | REVISED - |
| Default | | DRAWN - | REVISED - |
| | PLOT SCALE = 48.0000' / in. | CHECKED - | REVISED - |
| | PLOT DATE = 12/23/2015 | DATE - | REVISED - |

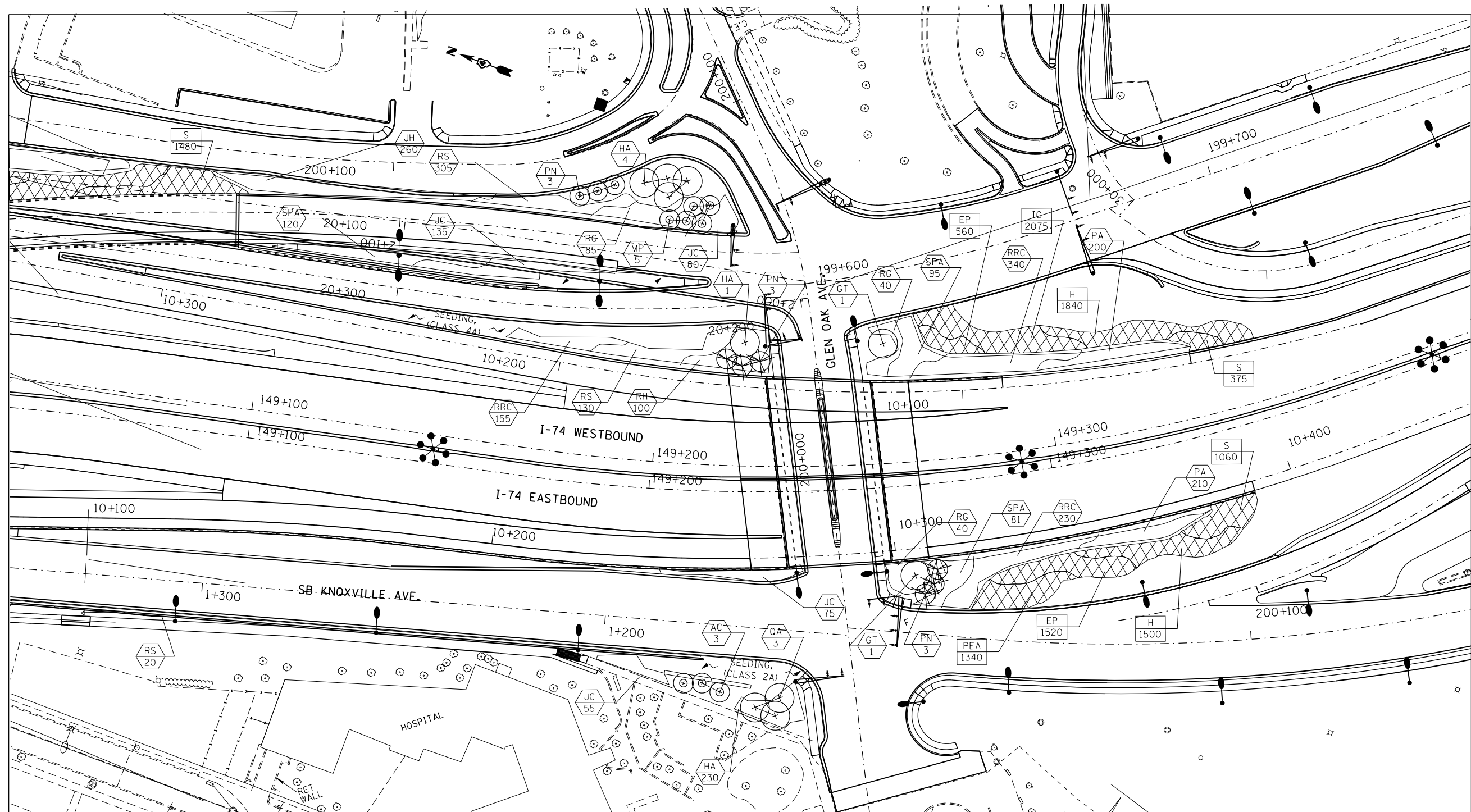
**STATE OF ILLINOIS
DEPARTMENT OF TRANSPORTATION**

PLAN SHEET-LAYOUT 3

SCALE: SHEET OF SHEETS STA. TO STA.

| F.A.I. RTE. | SECTION | COUNTY | TOTAL SHEETS | SHEET NO. |
|--------------------|------------------------|--------|--------------|-----------|
| 74 | 72-[8LS-8,(9,9-1)LS-7] | PEORIA | 12 | 8 |
| CONTRACT NO. 68C73 | | | | |

ILLINOIS FED. AID PROJECT



LEGEND

- VINES ON SOUND/RETAINING WALL
- SHRUBS
- EVERGREEN TREE
- SMALL ORNAMENTAL TREE
- SHADE TREE (5' DIA. MULCH SAUCER-TYP. -FOR ALL TREES & SHRUBS)
- PERENNIAL PLANTS, WILDFLOWERS
- PERENNIAL PLANTS, FOR SUN
- PERENNIAL PLANTS KEY QUANTITY OF SPECIFIED PLANT
- PLANT KEY QUANTITY OF SPECIFIED PLANT

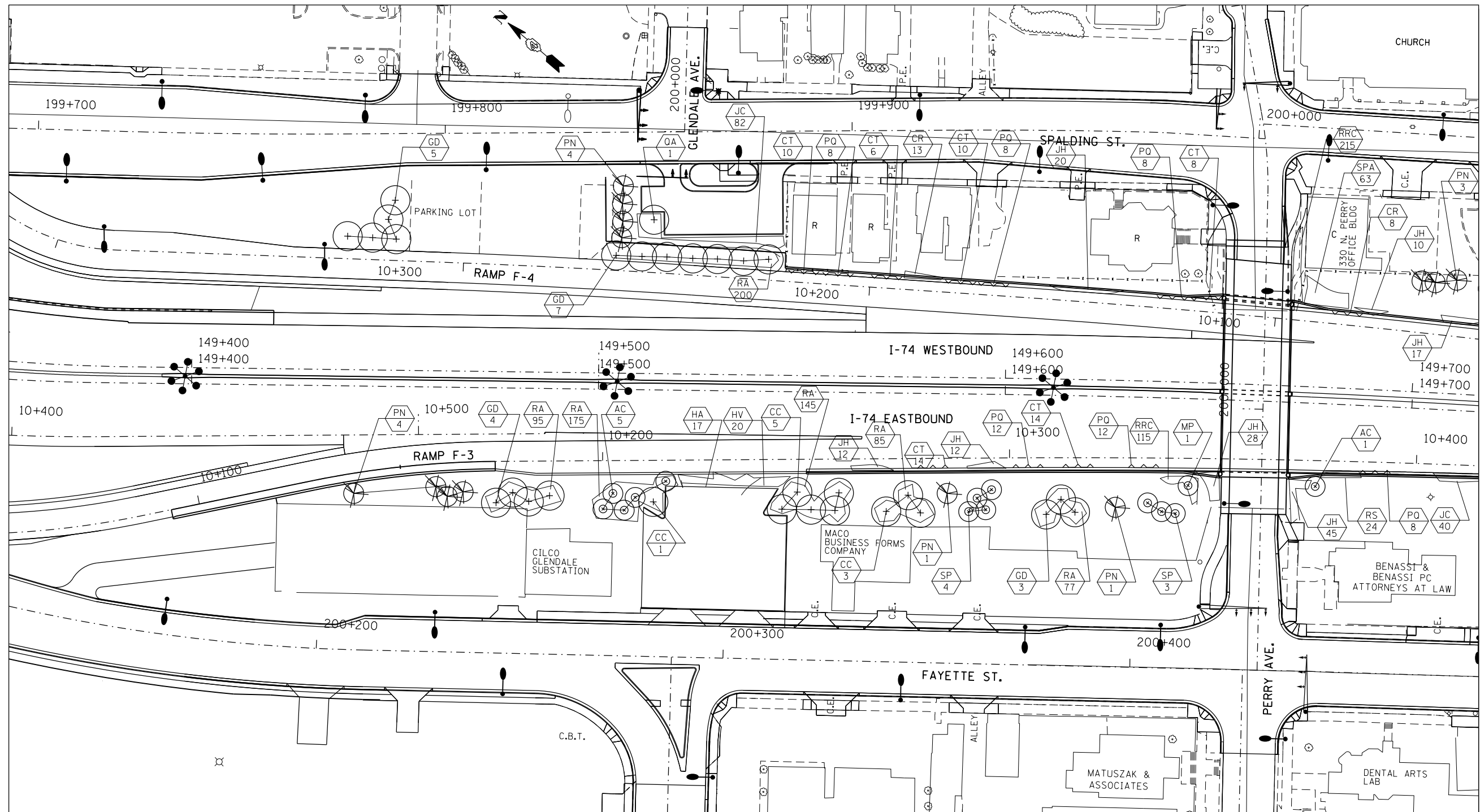
| | | | |
|-------------|-----------------------------|------------|-----------|
| FILE NAME = | USER NAME = kesthbr | DESIGNED - | REVISED - |
| Default | | DRAWN - | REVISED - |
| | PLOT SCALE = 48.0000' / in. | CHECKED - | REVISED - |
| | PLOT DATE = 12/23/2015 | DATE - | REVISED - |

**STATE OF ILLINOIS
DEPARTMENT OF TRANSPORTATION**

PLAN SHEET-LAYOUT 4

SCALE: SHEET OF SHEETS STA. TO STA.

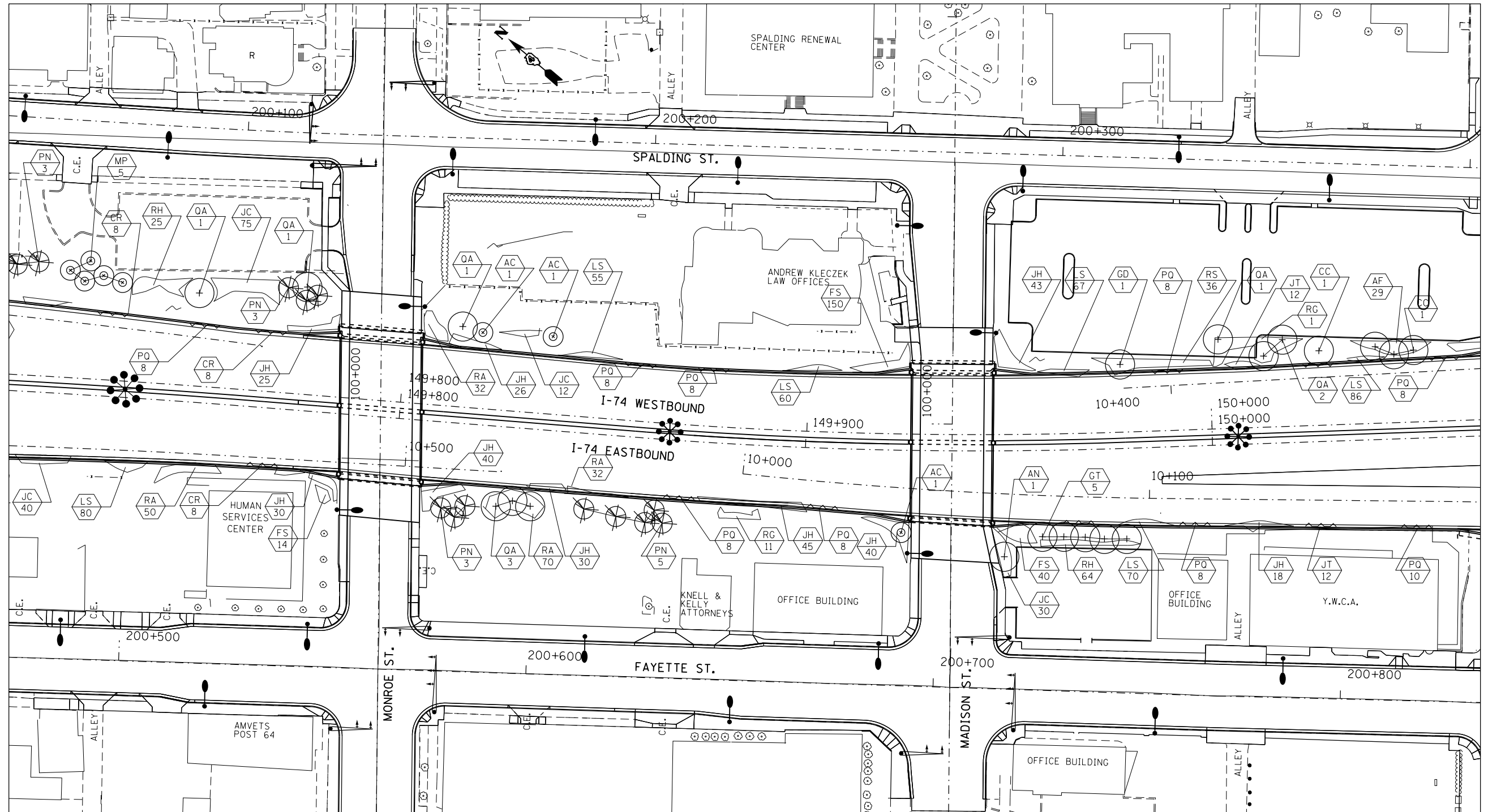
| F.A.I. RTE. | SECTION | COUNTY | TOTAL SHEETS | SHEET NO. |
|---------------------------|------------------------|--------|--------------|-----------|
| 74 | 72-[8LS-8,(9,9-1)LS-7] | PEORIA | 12 | 9 |
| CONTRACT NO. 68C73 | | | | |
| ILLINOIS FED. AID PROJECT | | | | |



LEGEND

- VINES ON SOUND/RETAINING WALL
- SHRUBS
- EVERGREEN TREE
- SMALL ORNAMENTAL TREE
- SHADE TREE (5' DIA. MULCH SAUCER-TYP. -FOR ALL TREES & SHRUBS)
- PERENNIAL PLANTS, WILDFLOWERS
- PERENNIAL PLANTS, FOR SUN
- PERENNIAL PLANTS KEY QUANTITY OF SPECIFIED PLANT
- PLANT KEY QUANTITY OF SPECIFIED PLANT

| | | | | | | | | | | | |
|-------------|-----------------------------|------------|-----------|---|----------------------------|---------------------------|------------------------|--------|--------------|-----------|--|
| FILE NAME = | USER NAME = keathbr | DESIGNED - | REVISED - | STATE OF ILLINOIS DEPARTMENT OF TRANSPORTATION | PLAN SHEET-LAYOUT 5 | F.A.I. RTE. | SECTION | COUNTY | TOTAL SHEETS | SHEET NO. | |
| Default | PLOT SCALE = 40.0000' / in. | DRAWN - | REVISED - | | | 74 | 72-[8LS-8,(9,9-1)LS-7] | PEORIA | 12 | 10 | |
| | PLOT DATE = 12/23/2015 | CHECKED - | REVISED - | | | CONTRACT NO. 68C73 | | | | | |
| | | DATE - | REVISED - | | | ILLINOIS FED. AID PROJECT | | | | | |



LEGEND

- VINES ON SOUND/RETAINING WALL
- SHRUBS
- EVERGREEN TREE
- SMALL ORNAMENTAL TREE
- SHADE TREE (5' DIA. MULCH SAUCER-TYP. -FOR ALL TREES & SHRUBS)
- PERENNIAL PLANTS, WILDFLOWERS
- PERENNIAL PLANTS, FOR SUN
- PERENNIAL PLANTS KEY QUANTITY OF SPECIFIED PLANT
- PLANT KEY QUANTITY OF SPECIFIED PLANT

| | | | |
|-------------|-----------------------------|------------|-----------|
| FILE NAME = | USER NAME = keathbr | DESIGNED - | REVISED - |
| Default | | DRAWN - | REVISED - |
| | PLOT SCALE = 48.0000' / in. | CHECKED - | REVISED - |
| | PLOT DATE = 12/23/2015 | DATE - | REVISED - |

**STATE OF ILLINOIS
DEPARTMENT OF TRANSPORTATION**

PLAN SHEET-LAYOUT 6

SCALE: SHEET OF SHEETS STA. TO STA.

| F.A.I. RTE. | SECTION | COUNTY | TOTAL SHEETS | SHEET NO. |
|---------------------------|------------------------|--------|--------------|-----------|
| 74 | 72-[8LS-8,(9,9-1)LS-7] | PEORIA | 12 | 11 |
| CONTRACT NO. 68C73 | | | | |
| ILLINOIS FED. AID PROJECT | | | | |

