

STATE OF ILLINOIS
DEPARTMENT OF TRANSPORTATION
DIVISION OF HIGHWAYS

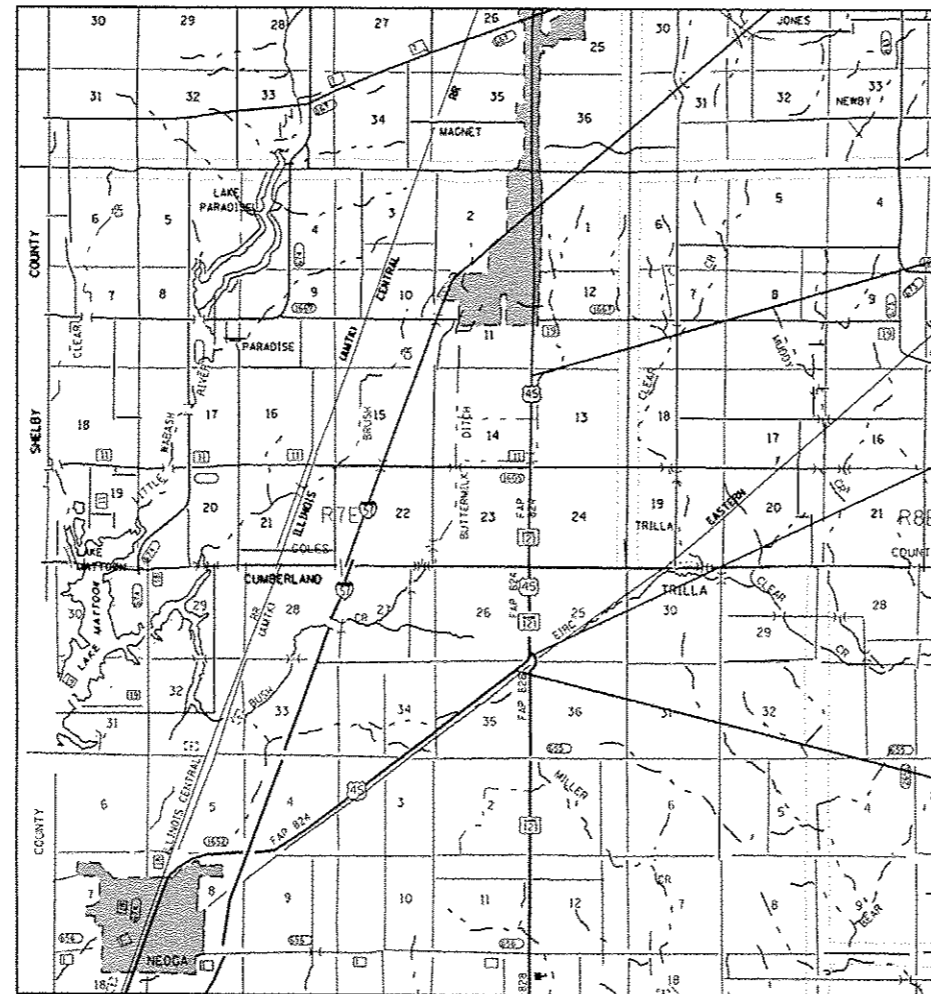
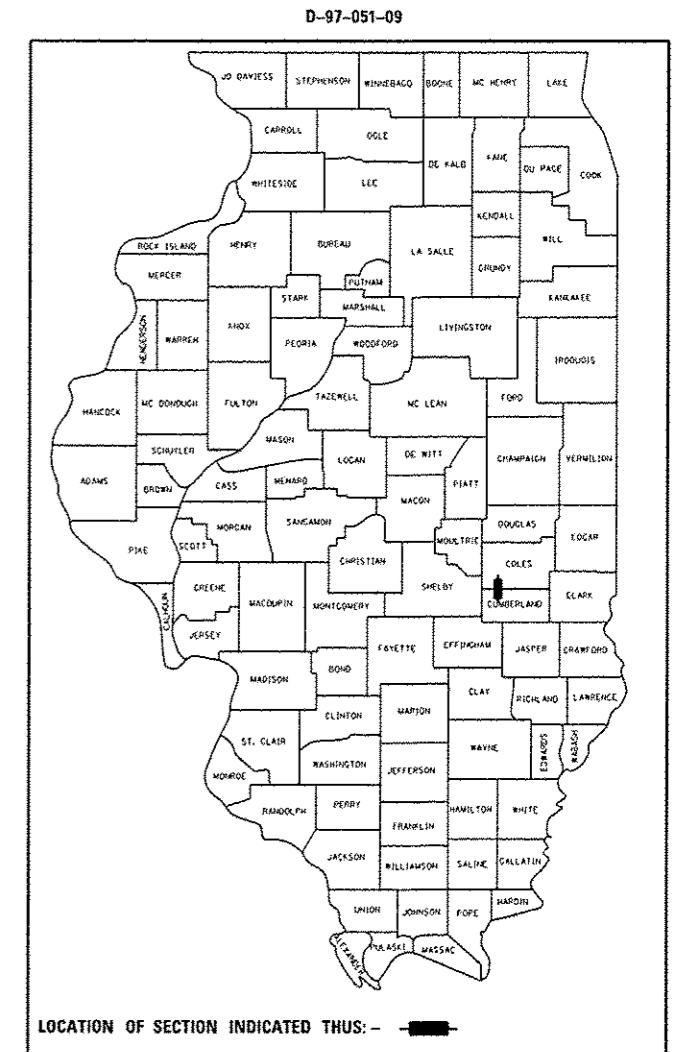
**PROPOSED
HIGHWAY PLANS**
FAP ROUTE 824 (US 45)
SECTION (16)RS-5 & (15,16)RS-2
PROJECT ACF-0824 (021)
HMA RESURFACING
COLES & CUMBERLAND COUNTIES

C-97-098-09

FOR INDEX OF SHEETS, SEE SHEET NO. 2

2009 ADT = 4,250

F.A.P. RTE.	SECTION	COUNTY	TOTAL SHEETS	SHEET NO.
824	(16)RS-5 & (15,16)RS-2	•	18	1
FED. ROAD DIST. NO.	ILLINOIS	CONTRACT NO. 74394		
• COLES/CUMBERLAND				

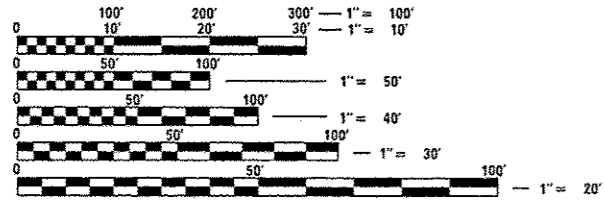


STA 1205+95
PROJECT ENDS

STATION EQUATION
STA 1024+47.2 BK =
STA 1025+05.3 AH

COLES COUNTY
CUMBERLAND COUNTY STA 1073+85

STA 1010+90
PROJECT BEGINS



FULL SIZE PLANS HAVE BEEN PREPARED USING STANDARD ENGINEERING SCALES. REDUCED SIZED PLANS WILL NOT CONFORM TO STANDARD SCALES. IN MAKING MEASUREMENTS ON REDUCED PLANS, THE ABOVE SCALES MAY BE USED.

J.U.L.I.E.
JOINT UTILITY LOCATION INFORMATION FOR EXCAVATION
1-800-892-0123
OR 811

PROJECT ENGINEER: MARK DAUGHERTY
PROJECT MANAGER: JOYCE HEMMEN
PHONE: (217)-342-8329
CONTRACT NO. 74394

TOTAL LENGTH OF PROJECT = 19,026.9 FT = 3.60 MILES

STATE OF ILLINOIS
DEPARTMENT OF TRANSPORTATION
DIVISION OF HIGHWAYS

SUBMITTED *December 9, 2016*
Kyle L. Dinsell 100
DEPUTY DIRECTOR OF HIGHWAYS, REGION ENGINEER

Jan 29, 2016
Margaret M. Addis PE 101
ENGINEER OF DESIGN AND ENVIRONMENT

Jan 29, 2016
Omer Osman PE 102
DIRECTOR OF HIGHWAYS, CHIEF ENGINEER

PRINTED BY THE AUTHORITY
OF THE STATE OF ILLINOIS

GENERAL NOTES

THE PROPOSED PROJECT IS LOCATED ON US 45 AND LIES IN COLES AND CUMBERLAND COUNTIES. THE PROJECT BEGINS ABOUT 0.2 MILES SOUTH OF ILLINOIS 121 AND EXTENDS NORTHWARDS TO ABOUT 20 FEET SOUTH OF COUNTY ROAD 250 N. THE WORK INCLUDED IN SECTION (16)RS-5 & (15,16)RS-2 CONSISTS OF PAVEMENT PATCHING, MILLING, LEVELING BINDER, HOT-MIX ASPHALT SURFACE COURSE, AND AGGREGATE SHOULDER AND ANY OTHER WORK NECESSARY TO COMPLETE THE SECTION.

THE CONTRACTOR SHALL PROVIDE INTERNET ACCESS TO THE HOT-MIX ASPHALT PLANT QUALITY CONTROL LAB SO THAT HOT-MIX ASPHALT PLANT REPORTS CAN BE E-MAILED TO THE DISTRICT HEADQUARTERS. THIS WORK SHALL BE INCLUDED IN THE COST OF HOT-MIX ASPHALT ITEMS.

RAP SHALL BE USED TO ENSURE SHOULDER IS STABLE WHERE GUARDRAIL IS BEING INSTALLED. THIS WORK SHALL BE INCLUDED IN THE COST OF GUARDRAIL PAY ITEMS.

THE MATERIAL USED FOR AGGREGATE SHOULDERS, TYPE B SHALL BE CRUSHED STONE, CRUSHED CONCRETE, OR RAP.

THE MATERIAL USED FOR AGGREGATE SURFACE COURSE, TYPE B SHALL BE CRUSHED STONE OR CRUSHED CONCRETE.

AT APPROXIMATE STATION 1141+20 RT THE FIELD ENTRANCE CONTAINS A SINGLE SPAN CONCRETE STRUCTURE OVER A LARGE DRAINAGE DITCH. THE CONCRETE BRIDGE SHALL BE REMOVED AND PAID FOR AS REMOVAL OF EXISTING STRUCTURE. THE MAIN ACCESS TO THE FIELD IS ON ETNA ROAD. ANY NECESSARY DITCH WORK AT THIS LOCATION SHALL BE INCLUDED IN THE COST OF REMOVAL OF EXISTING STRUCTURES.

ANY NECESSARY SEEDING ON THE PROJECT SHALL BE APPLIED IN ACCORDANCE WITH SECTION 250 OF THE STANDARD SPECIFICATIONS FOR SEEDING, CLASS 2A. SEEDING CLASS 2A, NITROGEN FERTILIZER NUTRIENT, PHOSPHOROS FERTILIZER NUTRIENT, POTASSIUM FERTILIZER NUTRIENT AND MULCH SHALL NOT BE PAID FOR SEPARATELY BUT SHALL BE INCLUDED IN THE COST OF REMOVAL OF EXISTING STRUCTURES.

THE PAVEMENT MARKING QUANTITIES WERE OBTAINED FROM EXISTING CONDITIONS AS DETERMINED FROM FIELD MEASUREMENTS AND FROM EXISTING PLANS.

PAVEMENT MARKING SHALL BE APPLIED IN ACCORDANCE WITH SECTION 780 OF THE STANDARD SPECIFICATIONS. SHORT TERM PAVEMENT MARKING SHALL BE APPLIED TO THE MILLED SURFACE, LEVELING BINDER AND HOT-MIX ASPHALT SURFACE COURSE AS SPECIFIED IN SECTION 703 OF THE STANDARD SPECIFICATIONS. TEMPORARY TAPE SHALL BE USED ON THE SURFACE COURSE AND PAINT SHALL BE USED ON MILLED SURFACE.

THE TOTAL QUANTITY OF PAINT PAVEMENT MARKING - LINE 4 INCH CONSISTS OF 13015 FEET OF YELLOW AND 38894 FEET OF WHITE.

THE TOTAL QUANTITY OF THERMOPLASTIC PAVEMENT MARKING - LINE 6 INCH CONSISTS OF 170 FEET OF WHITE.

THE TOTAL QUANTITY OF THERMOPLASTIC PAVEMENT MARKING - LINE 12 INCH CONSISTS OF 293 FEET OF YELLOW.

THE EXISTING PAVEMENT SHALL BE PATCHED IN ACCORDANCE WITH SECTION 442 OF THE STANDARD SPECIFICATIONS AND THE SPECIAL PROVISIONS. THE QUANTITY OF PATCHING SHOWN ON THE PLANS IS AN ESTIMATE ONLY AND THE FINAL LOCATIONS AND QUANTITY SHALL BE DETERMINED BY THE ENGINEER IN THE FIELD.

THE FOLLOWING RATES OF APPLICATION HAVE BEEN USED IN CALCULATING PLAN QUANTITIES:

AGGREGATE (PRIME COAT) 4.0 LB/SO YD
 BIT MATLS (PRIME COAT) 0.05 LB/SO YD
 BITUMINOUS CONCRETE 112 LBS/SO YD/INCH

THE FOLLOWING MIXTURE REQUIREMENTS ARE APPLICABLE FOR THIS PROJECT:

BINDER

MIXTURE USE: LEVEL BINDER - 3/4"
 APPLICATION: LEVELING BINDER (MACHINE METHOD) N70
 PG GRADE: PG 64-22
 DESIGN AIR VOIDS: 4.0% @ NDESIGN = 70
 MIXTURE COMPOSITION: IL-9.5
 FRICTION: N/A

SURFACE

MIXTURE USE: SURFACE COURSE - 1 1/2"
 APPLICATION: HOT-MIX ASPHALT SURFACE COURSE, MIX "C", N70
 PG GRADE: PG 64-22
 DESIGN AIR VOIDS: 4.0% @ NDESIGN = 70
 MIXTURE COMPOSITION: IL-9.5
 FRICTION AGGREGATE: MIXTURE C

PATCHING

MIXTURE USE: PAVEMENT PATCHING
 APPLICATION: HOT-MIX ASPHALT BINDER COURSE, IL- 19.0, N70
 PG GRADE: PG 64-22
 DESIGN AIR VOIDS: 4.0% @ NDESIGN = 70
 MIXTURE COMPOSITION: IL-19.0
 FRICTION AGGREGATE: N/A

INCIDENTAL

MIXTURE USE: INCIDENTAL BITUMINOUS SURFACE (DRIVEWAYS)
 APPLICATION: HOT-MIX ASPHALT SURFACE COURSE, MIX "C" N70
 PG GRADE: PG 64-22
 DESIGN AIR VOIDS: 4.0% @ NDESIGN = 70
 MIXTURE COMPOSITION: IL-9.5
 FRICTION AGGREGATE: MIXTURE C

INDEX OF SHEETS

INDEX OF SHEETS

SHEET NO.	ITEM
1	COVER SHEET
2	INDEX OF SHEETS, GENERAL NOTES, AND LIST OF APPLICABLE HIGHWAY STANDARDS
3-4	SUMMARY OF QUANTITIES
5	TYPICAL SECTION
6-7	ALIGNEMENT AND TIES
8	SCHEDULES
9	ENTRANCE SCHEDULE AND MAILBOX TURNOUT DETAIL
10-13	PLAN SHEETS
14	MISCELLANEOUS DETAILS
15-18	TYPICAL APPLICATIONS OF PAVEMENT MARKINGS

THE FOLLOWING STANDARDS ARE A PART OF THESE PLANS AND ARE INCLUDED AFTER SHEET NO. 18:

STD. NO.	DESCRIPTION
000001-06	STANDARD SYMBOLS, ABBREVIATIONS AND PATTERNS
001006	DECIMAL OF AN INCH AND OF A FOOT
442201-03	CLASS C AND D PATCHES
630001-10	STEEL PLATE BEAM GUARDRAIL
630301-06	SHOULDER WIDENING FOR TYPE 1 (SPECIAL) GUARDRAIL TERMINALS
635006-03	REFLECTOR AND TERMINAL MARKER PLACEMENT
635011-02	REFLECTOR MARKER AND MOUNTING DETAILS
667101-02	PERMANENT SURVEY MARKERS
701006-05	OFF-RD OPERATIONS, 2L, 2W, 4.5 m (15') TO 600 mm (24") FROM PAVEMENT EDGE
701011-04	OFF-RD MOVING OPERATIONS, 2L, 2W, DAY ONLY
701201-04	LANE CLOSURE, 2L, 2W, DAY ONLY
701301-04	LANE CLOSURE, 2L, 2W, SHORT TIME OPERATIONS
701306-03	LANE CLOSURE, 2L, 2W, SLOW MOVING OPERATIONS DAY ONLY, FOR SPEEDS >=45 MPH
701311-03	LANE CLOSURE, 2L, 2W, MOVING OPERATIONS - DAY ONLY
701901-04	TRAFFIC CONTROL DEVICES
780001-05	TYPICAL PAVEMENT MARKINGS
781001-03	TYPICAL APPLICATIONS RAISED REFLECTIVE PAVEMENT MARKERS
B. L. R. 27-1	TRAFFIC BARRIER TERMINAL TYPE 5A

COLES/CUMBERLAND

FILE NAME: p:\1\0848E\BID\INTG\Illinois.gov\PI\DOT\DO	USER NAME: staff@enr.com	DESIGNED: [Signature]	REVISED: [Signature]	STATE OF ILLINOIS DEPARTMENT OF TRANSPORTATION	GENERAL NOTES & INDEX OF SHEETS	F.A.P. RTE.:	SECTION:	COUNTY:	TOTAL SHEETS:	SHEET NO.:
PROJECT: 16RS-5 & 15,16RS-2	DATE: 12/10/2015	CHECKED: [Signature]	REVISED: [Signature]			824	(16)RS-5 & (15,16)RS-2		18	2
PLOT SCALE: 1/8" = 1'-0"	DATE: 12/10/2015	CHECKED: [Signature]	REVISED: [Signature]			CONTRACT NO. 74394				
PLOT DATE: 12/10/2015	DATE: 12/10/2015	CHECKED: [Signature]	REVISED: [Signature]			ILLINOIS FED. AID PROJECT				

SUMMARY OF QUANTITIES			80% FED / 20% STATE		
CODE NO	ITEM	UNIT	TOTAL QUANTITIES	CONSTRUCTION TYPE CODE	
				CUMBERLAND RURAL	COLES RURAL
40200800	AGGREGATE SURFACE COURSE, TYPE B	TON	11	2	9
40600275	BITUMINOUS MATERIALS (PRIME COAT)	POUND	26842	9008	17834
40600635	LEVELING BINDER (MACHINE METHOD), N70	TON	2506	841	1665
40600895	CONSTRUCTING TEST STRIP	EACH	1	1	
40600982	HOT-MIX ASPHALT SURFACE REMOVAL - BUTT JOINT	SO YD	270	135	135
40600990	TEMPORARY RAMP	SO YD	75	38	37
40603315	HOT-MIX ASPHALT SURFACE COURSE, "C", N70	MIX TON	5011	1682	3329
40800050	INCIDENTAL HOT-MIX ASPHALT SURFACING	TON	154	91	63
44000155	HOT-MIX ASPHALT SURFACE REMOVAL, 1 1/2"	SO YD	59378	19883	39495
44201815	CLASS D PATCHES, TYPE II, 14 INCH	SO YD	127	67	60
44201819	CLASS D PATCHES, TYPE III, 14 INCH	SO YD	18	18	
44201851	CLASS D PATCHES, TYPE II, 17 INCH	SO YD	131		131
48102100	AGGREGATE WEDGE SHOULDER, TYPE B	TON	1350	420	930

SUMMARY OF QUANTITIES			80% FED / 20% STATE		
CODE NO	ITEM	UNIT	TOTAL QUANTITIES	CONSTRUCTION TYPE CODE	
				CUMBERLAND RURAL	COLES RURAL
50100100	REMOVAL OF EXISTING STRUCTURES	EACH	1		1
* 63000001	STEEL PLATE BEAM GUARD RAIL, TYPE A, 6 FOOT POSTS	FOOT	150	100	50
* 63100075	TRAFFIC BARRIER TERMINAL, TYPE 5A	EACH	1		1
* 63100167	TRAFFIC BARRIER TERMINAL, TYPE 1 (SPECIAL) TANGENT	EACH	6	2	4
63200310	GUARDRAIL REMOVAL	FOOT	505	190	315
67000500	ENGINEER'S FIELD OFFICE, TYPE B	CAL MO	3	3	
67100100	MOBILIZATION	L SUM	1	0.3	0.7
70100450	TRAFFIC CONTROL AND PROTECTION, STANDARD 701201	L SUM	1	0.3	0.7
70100460	TRAFFIC CONTROL AND PROTECTION, STANDARD 701306	L SUM	1	0.3	0.7
70103815	TRAFFIC CONTROL SURVEILLANCE	CAL DA	6	2	4
70300100	SHORT-TERM PAVEMENT MARKING	FOOT	7847	2563	5284
70300210	TEMPORARY PAVEMENT MARKING LETTERS AND SYMBOLS	SO FT	31	31	

12 * SPECIALTY ITEM

FILE NAME =	USER NAME = aseffanna	DESIGNED -	REVISED -
pw\11854810\INTEG\illinois.gov\PI\DOT\Documents\DOT Offices\District 7\Projects\7439\ORAY\to\CAD\sheet\0774398-ent-koq.dgn		CHECKED -	REVISED -
		DATE -	REVISED -

STATE OF ILLINOIS
DEPARTMENT OF TRANSPORTATION

SUMMARY OF QUANTITIES

SCALE: N/A SHEET NO. 1 OF 2 SHEETS STA. TO STA.

F.A.P. RTE.	SECTION	COUNTY	TOTAL SHEETS	SHEET NO.
824	(16)RS-5 & (15)RS-2		18	3
FED. ROAD DIST. NO.			ILLINOIS FED. AID PROJECT	
			CONTRACT NO. 74394	

* COLES/CUMBERLAND

80% FED / 20% STATE

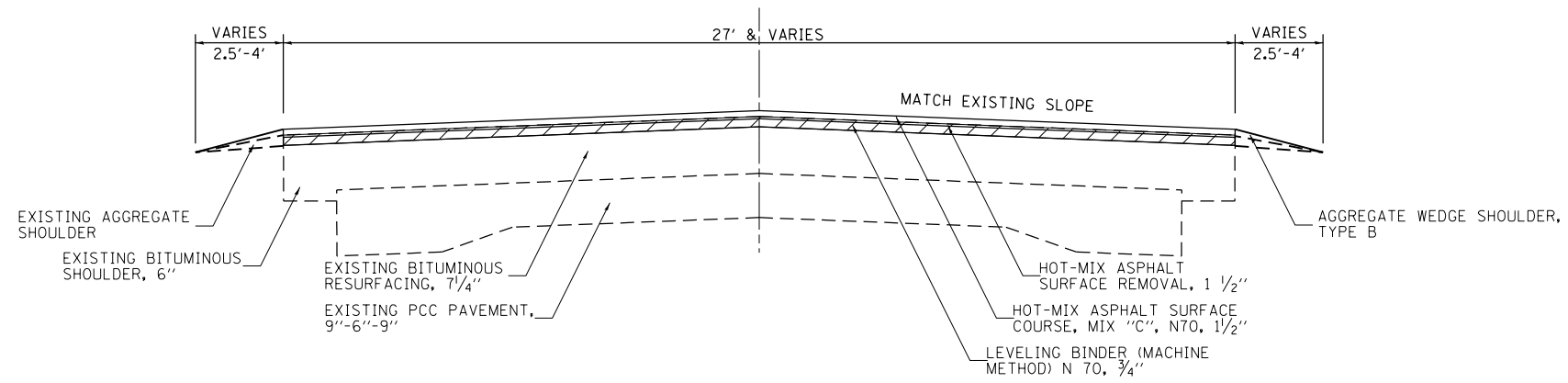
SUMMARY OF QUANTITIES				TOTAL QUANTITIES	CONSTRUCTION TYPE CODE	
CODE NO	ITEM	UNIT	0005			
			CUMBERLAND RURAL		COLES RURAL	
70300220	TEMPORARY PAVEMENT MARKING - LINE 4"	FOOT	51909	20294	31615	
70300240	TEMPORARY PAVEMENT MARKING - LINE 6"	FOOT	170	170		
70300260	TEMPORARY PAVEMENT MARKING - LINE 12"	FOOT	293	293		
70301000	WORK ZONE PAVEMENT MARKING REMOVAL	SQ FT	654	214	440	
* 78000100	THERMOPLASTIC PAVEMENT MARKING - LETTERS AND SYMBOLS	SQ FT	31	31		
* 78000400	THERMOPLASTIC PAVEMENT MARKING - LINE 6"	FOOT	170	170		
* 78000600	THERMOPLASTIC PAVEMENT MARKING - LINE 12"	FOOT	293	293		
* 78001110	PAINT PAVEMENT MARKING - LINE 4"	FOOT	51909	20294	31615	
* 78100100	RAISED REFLECTIVE PAVEMENT MARKER	EACH	362	197	165	
* 78200410	GUARDRAIL MARKERS, TYPE A	EACH	5	4	1	
* 78201000	TERMINAL MARKER - DIRECT APPLIED	EACH	6	2	4	
X7015005	CHANGEABLE MESSAGE SIGN	CAL DA	28	14	14	
Z0049799	PROTECTING OR RESETTING SURVEY MARKERS	EACH	14	1	13	

12

* SPECIALTY ITEM

* COLES/CUMBERLAND

FILE NAME =	USER NAME = staffennk	DESIGNED -	REVISED -	STATE OF ILLINOIS DEPARTMENT OF TRANSPORTATION	SUMMARY OF QUANTITIES	F.A.P. RTE.	SECTION	COUNTY	TOTAL SHEETS	SHEET NO.	
p:\1\1884EBID\INTEG.illinois.gov\PI007\DO	umants\1007 Office\District 7\Projects\743	ORANN	REVISED			824	16RS-5 & 15,16RS-2	*	18	4	
		CHECKED -	REVISED -			SCALE: N/A	SHEET NO. 1 OF 2 SHEETS	STA.	TO STA.	FED. ROAD DIST. NO.	ILLINOIS FED. AID PROJECT
		DATE -	REVISED -							CONTRACT NO. 74394	



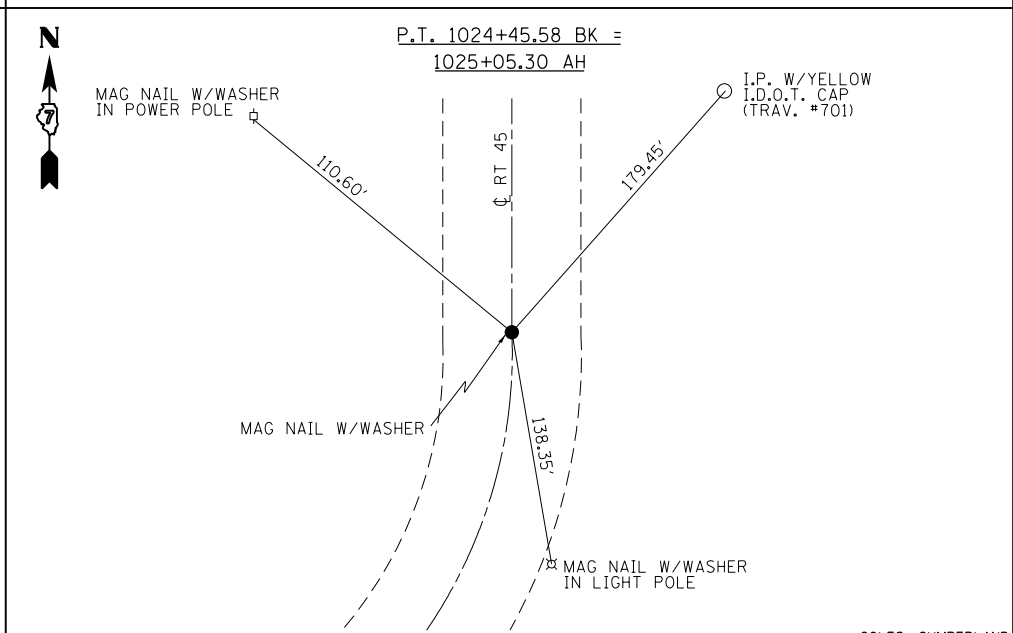
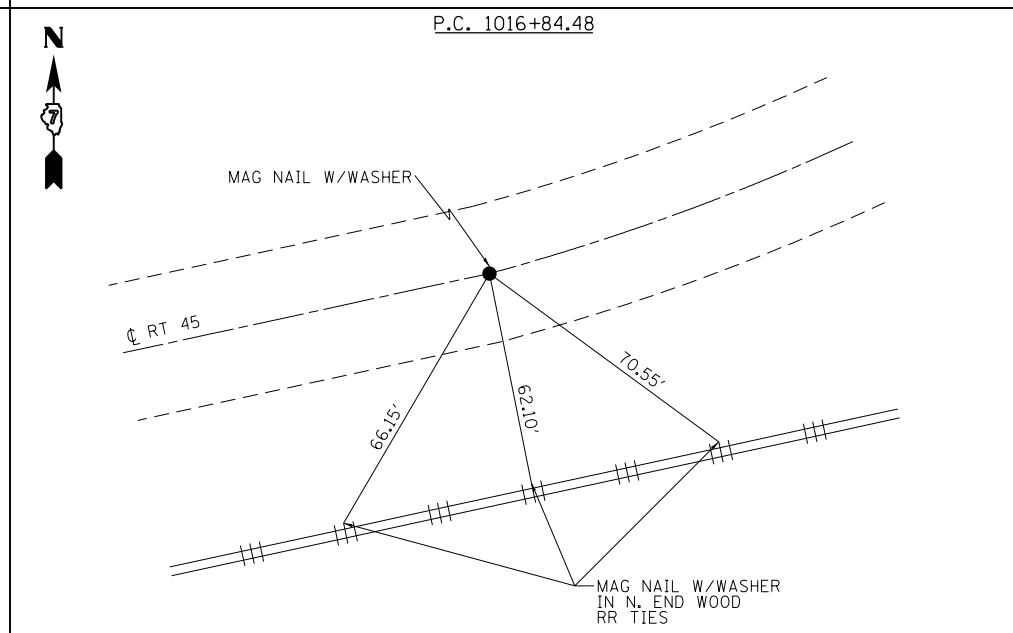
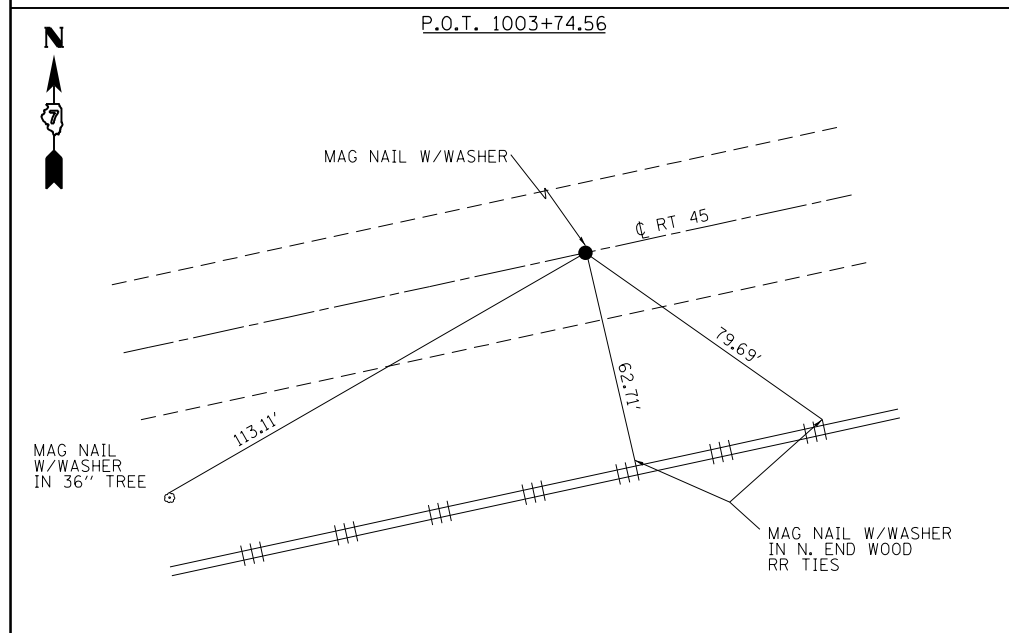
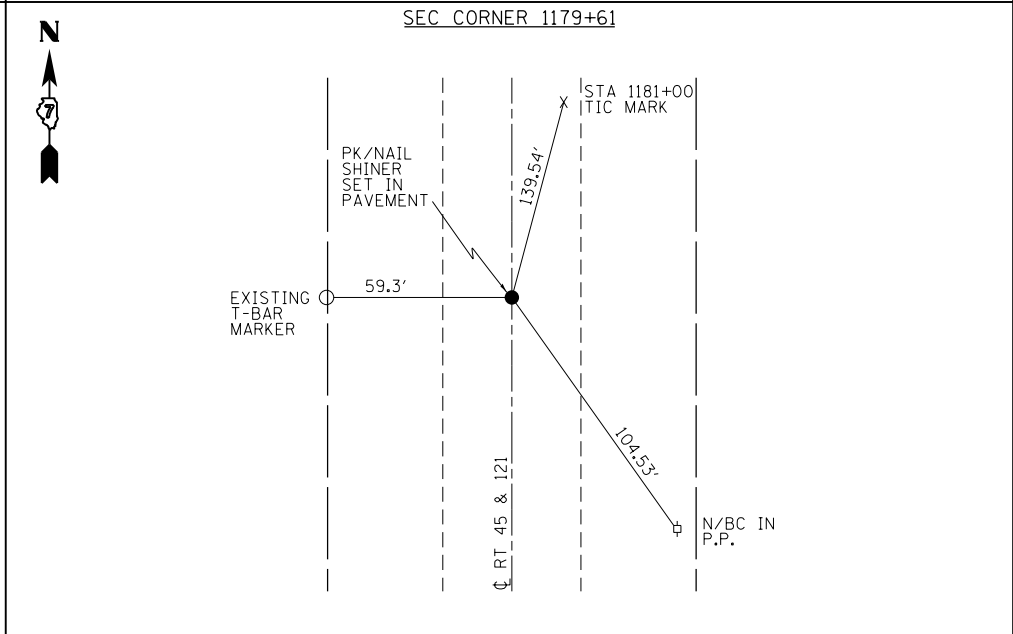
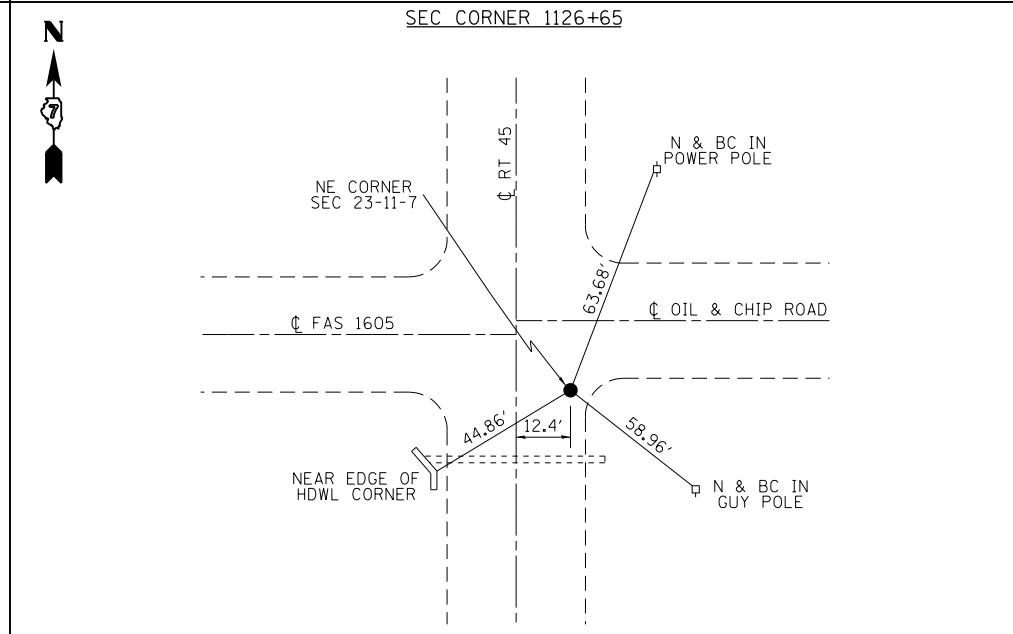
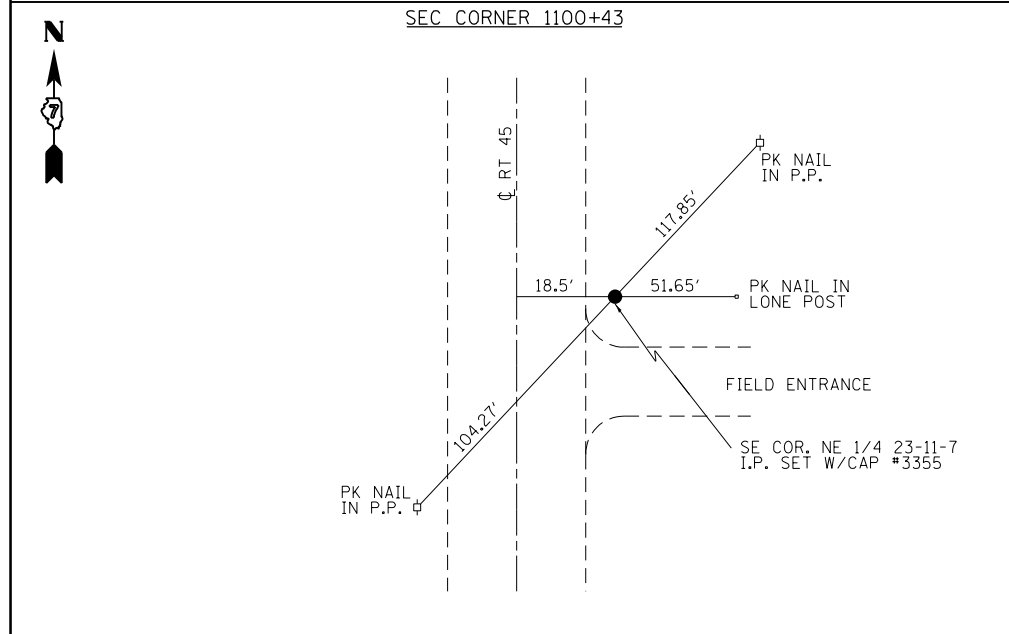
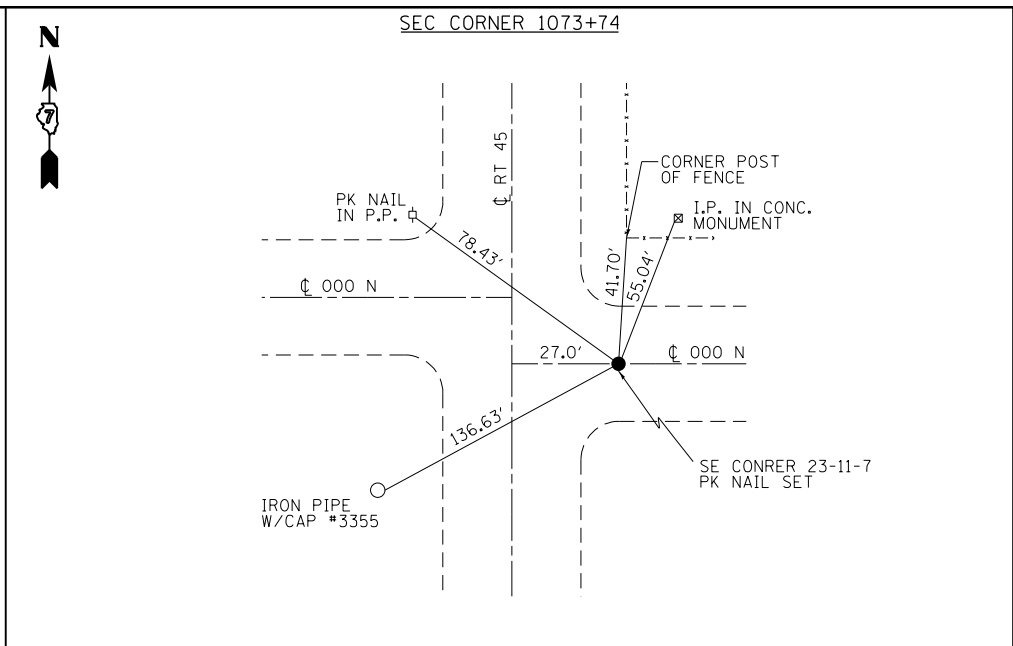
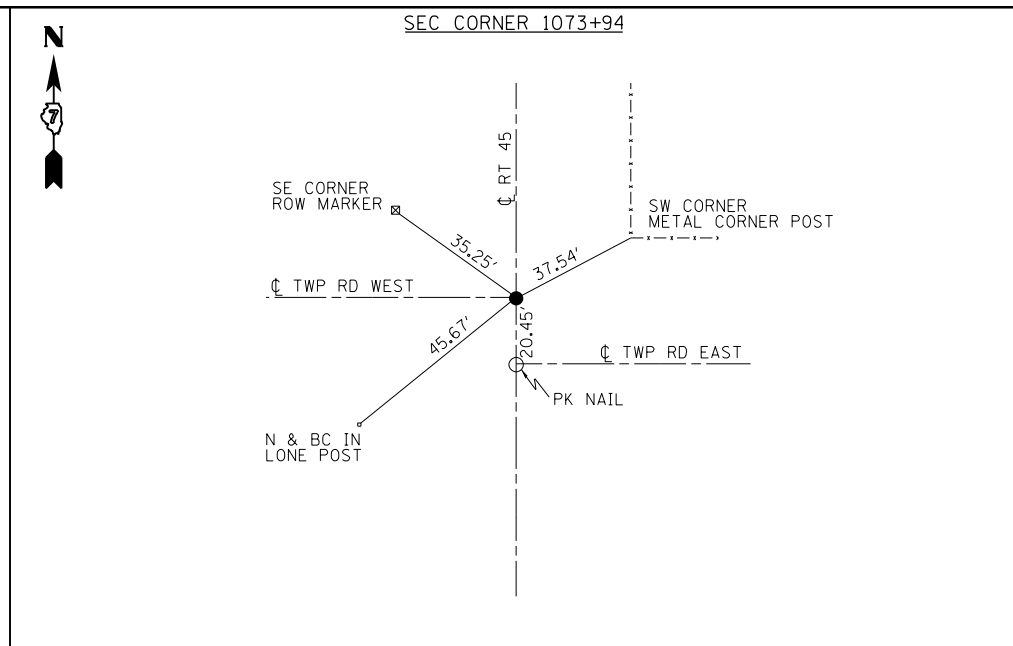
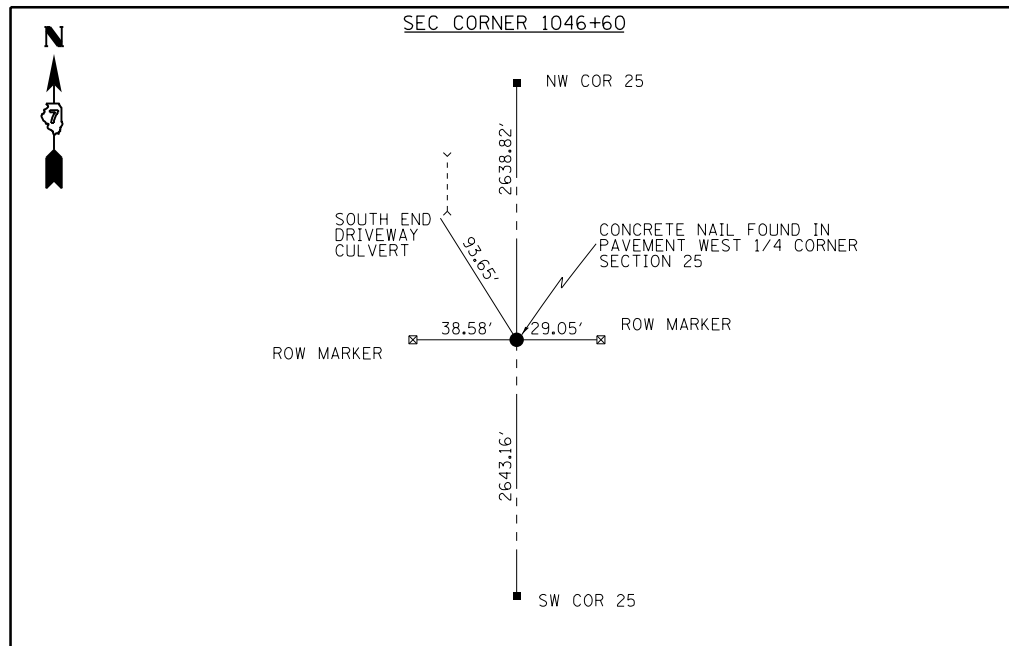
STA 1010+90 TO 1024+47.2
 STATION EQUATION
 STA 1024+47.2BK=1025+05.3AH
 STA 1025+05.3 TO 1205+95

NOTE: NOT DRAWN TO SCALE

PROPOSED TYPICAL CROSS SECTION

FILE NAME =	USER NAME = steffenmk	DESIGNED -	REVISED -	STATE OF ILLINOIS DEPARTMENT OF TRANSPORTATION	TYPICAL CROSS SECTIONS			F.A.P. RTE.	SECTION	COUNTY	TOTAL SHEETS	SHEET NO.
p:\11\084EBIDINTEG.illinois.gov\PWIDOT\Documents\IDOT Offices\District 7\Projects\74394\Drawings\CABsheets\0774394-sht-typicals.dwg	DRAWN	REVISION	REVISED					824	(16)RS-5 & (15,16)RS-2	•	18	5
PLOT SCALE = 100.0000' / 1in.	CHECKED -	REVISED -	REVISED -		CONTRACT NO. 74394			ILLINOIS FED. AID PROJECT				
PLOT DATE = 12/14/2015	DATE -	REVISED -	REVISED -		SCALE: NA	SHEET NO. 1 OF 1 SHEETS	STA.	TO STA.				

• COLES/CUMBERLAND



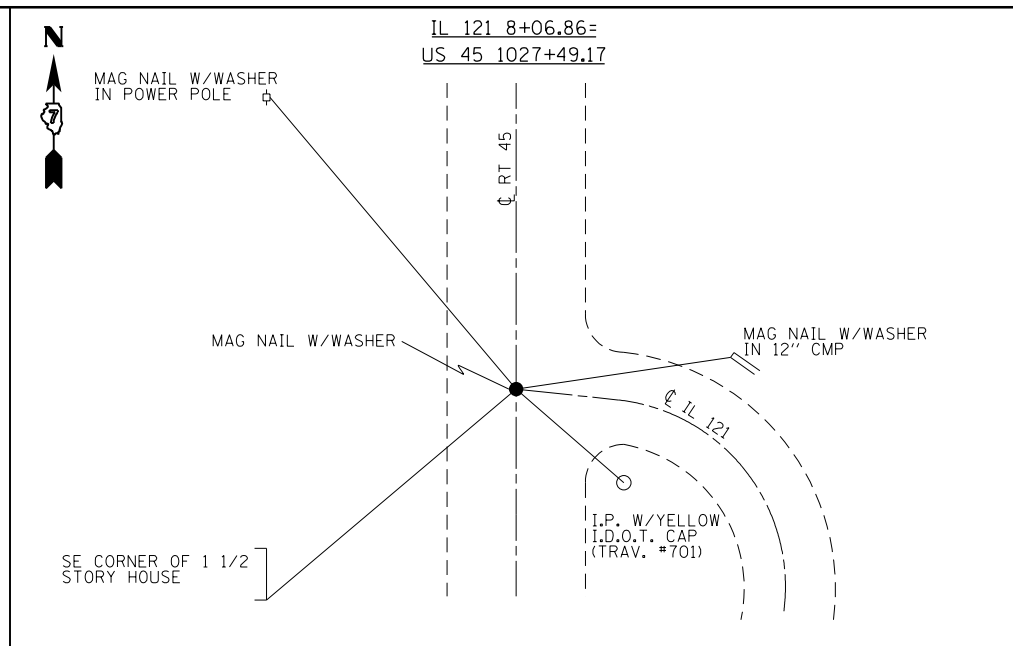
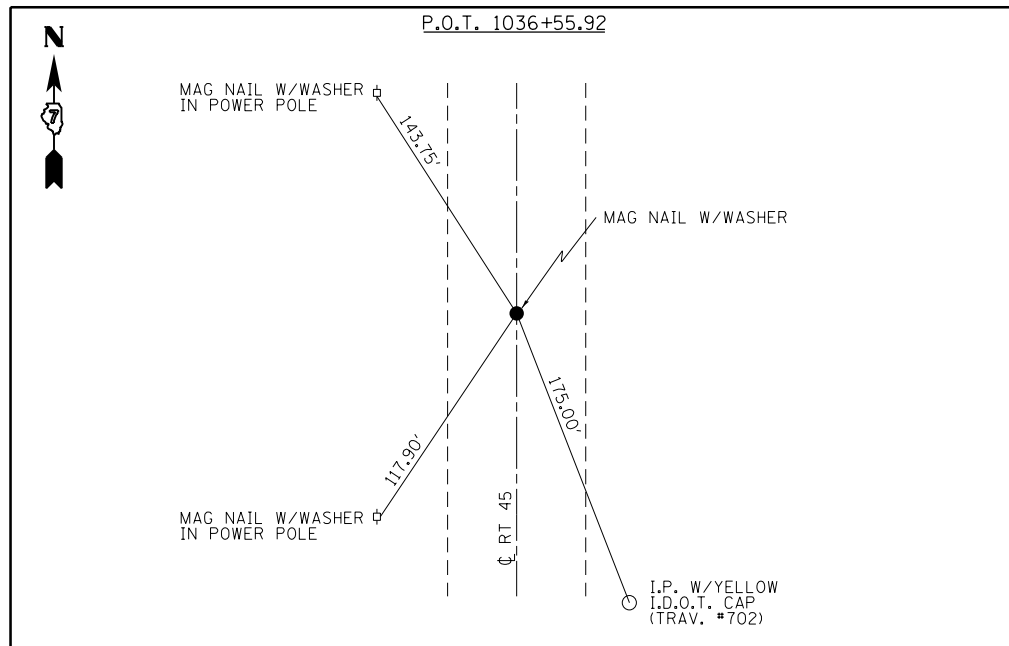
FILE NAME =	USER NAME = steffennk	DESIGNED -	REVISED -
p:\1\084EBIDINTEG.illinois.gov\PIWIDOT\Documents\IDOT Offices\District 7\Projects\74394\Drawings\CAD\Drawings\74394-sht-ties.dgn		CHECKED -	REVISED -
Default	PLOT DATE = 12/10/2015	DATE -	REVISED -

**STATE OF ILLINOIS
DEPARTMENT OF TRANSPORTATION**

ALIGNMENTS AND TIES		F.A.P. RTE.	SECTION	COUNTY	TOTAL SHEETS	SHEET NO.
		824	(16)RS-5 & (15,16)RS-2		18	6
SCALE:		SHEET	OF	SHEETS	STA.	TO STA.
						ILLINOIS FED. AID PROJECT

• COLES, CUMBERLAND

CONTRACT NO. 74394



PROTECTING OR RESETTING SURVEY MARKERS		
STATION	OFFSET	DESCRIPTION
1003+74.56	0'	POT - MAG NAIL WITH W/ WASHER
1016+86.48	0'	PC - MAG NAIL W/ WASHER
1024+45.58 BK/ 1025+05.30 AH	0'	PT - STA EQ - MAG NAIL W/ WASHER
1027+49.17 (US 45) = 8+06.86 (IL 121)	0'	INT OF US 45 AND IL 121 MAG NAIL W/ WASHER
1036+55.92	0'	POT - MAG NAIL WITH W/ WASHER
1154+15	0'	POT - IRON PIN W/ YELLOW CAP (FLUSH)
1165+81	0'	PI - IRON PIN SLIGHTLY BENT SOUTH (FLUSH)
1178+72	0'	POT - IRON PIN W/ RIMNETS OF YELLOW CAP (FLUSH)
1179+61	0.12' LT	PK NAIL
1126+65	12.4' RT	VAULT
1100+43	18.5' RT	IRON PIN WITH CAP, PLS #3355, BURIED +/- 3"
1073+74	27' RT	PK NAIL
1073+94	27' RT	PK NAIL
1046+60	0.15' LT	PK NAIL

• COLES, CUMBERLAND

PAVING SCHEDULE

STATION TO STATION	LENGTH	PAVEMENT WIDTH	AREA	BITUMINOUS MATERIALS (PRIME COAT)	HMA SURFACE COURSE, MIX "C", N70	LEVELING BINDER (MACHINE METHOD), N70	HMA SURFACE REMOVAL - BUTT JOINT	HMA SURFACE REMOVAL, 1-1/2"	TEMPORARY RAMP	AGGREGATE WEDGE SHOULDERS, TYPE B
	FEET	FEET	SQ YD	POUNDS	TON	TON	SQ YD	SQ YD	SQ YD	TON
1010+90.00 TO 1020+45.00	955.0	27.0	2865.0	1289.3	240.7	120.3	135.0	2730.0	37.5	69.8
1020+45.00 TO 1024+47.20	402.2	33.0	1474.7	663.6	123.9	61.9	-	1474.7	-	26.7
1025+05.30 TO 1031+20.00	614.7	39.0	2663.7	1198.7	223.8	111.9	-	2663.7	-	30.9
1031+20.00 TO 1034+50.00	330.0	33.0	1210.0	544.5	101.6	50.8	-	1210.0	-	20.8
1034+50.00 TO 1073+85.00	3935.0	27.0	11805.0	5312.3	991.6	495.8	-	11805.0	-	272.1
1073+85.00 TO 1147+94.00	7409.0	27.0	22227.0	10510.0	1867.1	933.5	-	22227.0	-	519.6
1147+94.00 TO 1205+95.00	5801.0	27.0	17403.0	7324.0	1461.9	730.9	135.0	17268.0	37.5	410.5
TOTALS	19447		59648	26842	5011	2506	270	59378	75	1350

TRAFFIC BARRIER TERMINAL, TYPE 1 (SPECIAL) TANGENT

STATIONING		LOCATION DESCRIPTION	QUANTITY (EACH)	STANDARD NO.
FROM	TO			
1065+61	1066+06	634 FT SOUTH OF TRILLA ROAD/ S. END	1	630301-05
1067+06	1067+56	634 FT SOUTH OF TRILLA ROAD/ N. END	1	630301-05
1124+19	1124+69	US 45-ETNA RD INT./ S. END OF SW QUADRANT	1	630301-03
1127+29	-	US 45-ETNA RD INT./ W. END OF NW QUADRANT	1	630301-03
1128+18	1128+68	US 45-ETNA RD INT./ N. END OF NE QUADRANT	1	630301-06
1128+24	1128+74	US 45-ETNA RD INT./ N. END OF NW QUADRANT	1	630301-03
TOTAL =			6	

TRAFFIC BARRIER TERMINAL, TYPE 5A

STATIONING		LOCATION DESCRIPTION	QUANTITY (EACH)	STANDARD NO.
FROM	TO			
1127+74	1127+87	US 45-ETNA RD INT./ N. END OF NE QUADRANT	1	BLR27-1
TOTAL =			1	

STEEL PLATE BEAM GUARDRAIL, TYPE A

STATIONING		LOCATION DESCRIPTION	QUANTITY (FEET)	STANDARD NO.
FROM	TO			
1066+06	1067+06	634 FT SOUTH OF TRILLA ROAD ON THE RIGHT	100.0	630001-08
1124+69	1124+82	US 45-ETNA RD INT./ S. END OF SW QUADRANT	12.5	630001-06
1127+87	1128+25	US 45-ETNA RD INT./ N. END OF NE QUADRANT	37.5	630001-06
TOTAL =			150.0	

PAVEMENT MARKING SCHEDULE

STATION TO STATION	LENGTH	SHORT TERM PAVEMENT MARKING	WORK ZONE PAVEMENT MARKING REMOVAL	PAINT PAVEMENT MARKING - LINE 4"	TEMPORARY PAVEMENT MARKING - LINE 4"	THERMOPLASTIC PAVEMENT MARKING - LINE 6"	TEMPORARY PAVEMENT MARKING - LINE 6"	THERMOPLASTIC PAVEMENT MARKING - LINE 12"	TEMPORARY PAVEMENT MARKING - LINE 12"	THERMOPLASTIC PAVEMENT MARKING - LETTERS AND SYMBOLS	TEMPORARY PAVEMENT MARKING - LETTERS AND SYMBOLS	RAISED REFLECTIVE PAVEMENT MARKER
	FEET	FT	SQ FT	FT	FT	FT	FT	FT	FT	SQ FT	SQ FT	EACH
1010+90.00 TO 1020+45.00	955.0	382.0	31.8	3398.5	3398.5	-	-	-	-	-	-	58.9
1020+45.00 TO 1024+47.20	402.2	160.9	13.4	2413.2	2413.2	-	-	85.0	85.0	-	-	40.2
1025+05.30 TO 1031+20.00	614.7	313.9	26.2	3041.2	3041.2	170.0	170.0	133.5	133.5	31.2	31.2	32.1
1031+20.00 TO 1034+50.00	330.0	132.0	11.0	1980.0	1980.0	-	-	74.0	74.0	-	-	16.5
1034+50.00 TO 1073+85.00	3935.0	1574.0	131.2	9460.8	9460.8	-	-	-	-	-	-	49.2
1073+85.00 TO 1179+07.00	10522.0	4208.8	350.7	23674.5	23674.5	-	-	-	-	-	-	131.5
1179+07.00 TO 1205+95.00	2688.0	1075.2	89.6	7941.0	7941.0	-	-	-	-	-	-	33.6
TOTALS	19447	7847	654	51909	51909	170	170	293	293	31	31	362

GUARDRAIL REMOVAL

STATIONING		LOCATION DESCRIPTION	QUANTITY (FEET)
FROM	TO		
1065+61	1067+51	634 FT SOUTH OF TRILLA ROAD	190
1124+19	1124+82	US 45-ETNA RD INT./ S. END OF SW QUADRANT	63
1127+29	-	US 45-ETNA RD INT./ W. END OF NW QUADRANT	50
1128+18	1128+68	US 45-ETNA RD INT./ N. END OF NW QUADRANT	50
1128+24	1129+74	US 45-ETNA RD INT./ N. END OF NE QUADRANT	100
1140+59	1141+11	1300 FT NORTH OF BRIDGE @ ETNA ROAD	52
TOTAL =			505



PROJECT BEGINS
STA 1010+90

1011+00
00+06+0101 0+5

PC STA 1015+10.00
PC STA 1015+10.00

1020+00

EQUATION:
PT Sta 1024+47.20
Sta 1024+47.20 BK =
Sta 1025+05.30 AH

ILL 121

1030+00

US 45

1035+00

1040+00



1040+00

1045+00

1050+00

1055+00

US 45

1060+00

1065+00

1070+00

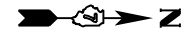
• COLES/CUMBERLAND

FILE NAME =	USER NAME = steffenmk	DESIGNED -	REVISED -
p:\11084EBIDINTEG.illinois.gov\PIWIDOT\Documents\IDOT Offices\District 7\Projects\74394\CAD\Drawings\10774394-sht-plan.dgn		CHECKED -	REVISED -
	PLOT SCALE = 200.0000' / in.	DATE -	REVISED -
	PLOT DATE = 12/10/2015		

**STATE OF ILLINOIS
DEPARTMENT OF TRANSPORTATION**

PLAN VIEW			
SCALE:	SHEET NO.	OF SHEETS	STA. TO STA.

F.A.P. RTE.	SECTION	COUNTY	TOTAL SHEETS	SHEET NO.
824	(16)RS-5 & (15,16)RS-2	•	18	10
CONTRACT NO. 74394				
ILLINOIS FED. AID PROJECT				



1070+00 1075+00 1080+00 1085+00 US 45 1090+00 1095+00 1100+00

STA 1073+85
TRILLA ROAD (1400N)
CUMBERLAND/COLES
COUNTY LINE



1100+00 1105+00 1110+00 1115+00 US 45 1120+00 1125+00 1130+00

ETNA ROAD

• COLES/CUMBERLAND

FILE NAME =	USER NAME = steffenmk	DESIGNED -	REVISED -
p:\11084EBIDINTEG.illinois.gov\PWIDOT\Documents\DOT Offices\District 7\Projects\74394\CAD\CABsheets\0774394-sht-plan.dgn		DRAWN -	REVISED -
	PLOT SCALE = 200.0000' / in.	CHECKED -	REVISED -
	PLOT DATE = 12/10/2015	DATE -	REVISED -

**STATE OF ILLINOIS
DEPARTMENT OF TRANSPORTATION**

PLAN VIEW

SCALE: SHEET NO. OF SHEETS STA. TO STA.

F.A.P. RTE.	SECTION	COUNTY	TOTAL SHEETS	SHEET NO.
824	(16)RS-5 & (15,16)RS-2	•	18	11
CONTRACT NO. 74394			ILLINOIS FED. AID PROJECT	



URBAN/RURAL LIMITS
STA 1151+70

1130+00 1135+00 1140+00 1145+00 US 45 1150+00 1155+00 1160+00

REMOVAL OF EXISTING STRUCTURES STA 1141+20



1160+00 1165+00 1170+00 1175+00 US 45 1180+00 1185+00 1190+00

• COLES/CUMBERLAND

FILE NAME =	USER NAME = steffenmk	DESIGNED -	REVISED -
pw:\IL084EBIDINTEG.illinois.gov\PWIDOT\Documents\IDOT Offices\District 7\Projects\74394\Drawings\CABsheets\0774394-sht-plan.dgn		CHECKED -	REVISED -
	PLOT SCALE = 200.0000' / in.	DATE -	REVISED -
	PLOT DATE = 12/10/2015		

**STATE OF ILLINOIS
DEPARTMENT OF TRANSPORTATION**

PLAN VIEW			
SCALE:	SHEET NO.	OF SHEETS	STA. TO STA.

F.A.P. RTE.	SECTION	COUNTY	TOTAL SHEETS	SHEET NO.
824	(16)RS-5 & (15,16)RS-2	•	18	12
CONTRACT NO. 74394			ILLINOIS FED. AID PROJECT	



PROJECT ENDS
STA 1205+95

COUNTY ROAD 250N

1190+00 1195+00 US 45 1200+00 1205+00 1210+00 1215+00 1220+00

• COLES/CUMBERLAND

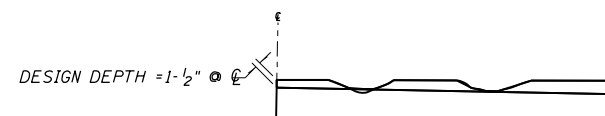
FILE NAME =	USER NAME = steffenmk	DESIGNED -	REVISED -
pw:\IL\084EBIDINTEG.illinois.gov\PWIDOT\Documents\DOT Offices\District 7\Projects\74394\Drawings\CABsheets\0774394-sht-plan.dgn		DRAWN -	REVISED -
	PLOT SCALE = 200.0000' / in.	CHECKED -	REVISED -
	PLOT DATE = 12/10/2015	DATE -	REVISED -

**STATE OF ILLINOIS
DEPARTMENT OF TRANSPORTATION**

PLAN VIEW

SCALE: SHEET NO. OF SHEETS STA. TO STA.

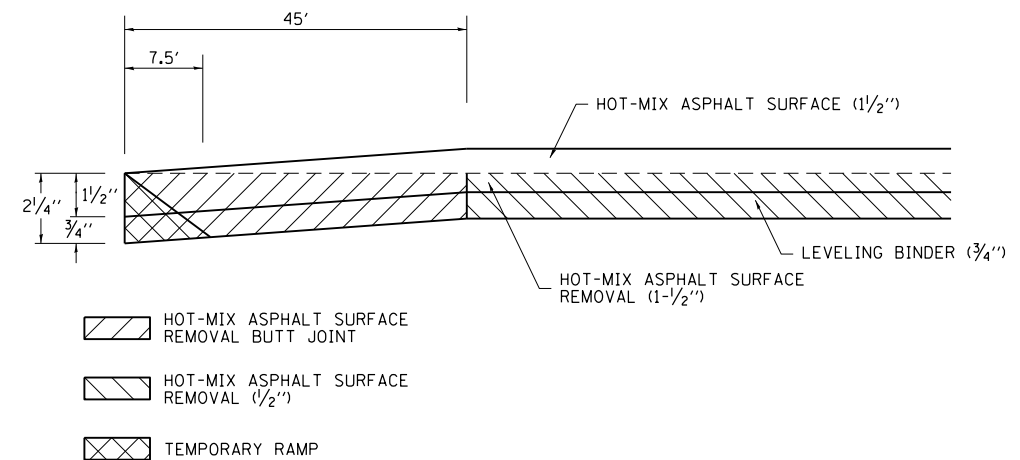
F.A.P. RTE.	SECTION	COUNTY	TOTAL SHEETS	SHEET NO.
824	(16)RS-5 & (15,16)RS-2	•	18	13
CONTRACT NO. 74394			ILLINOIS FED. AID PROJECT	



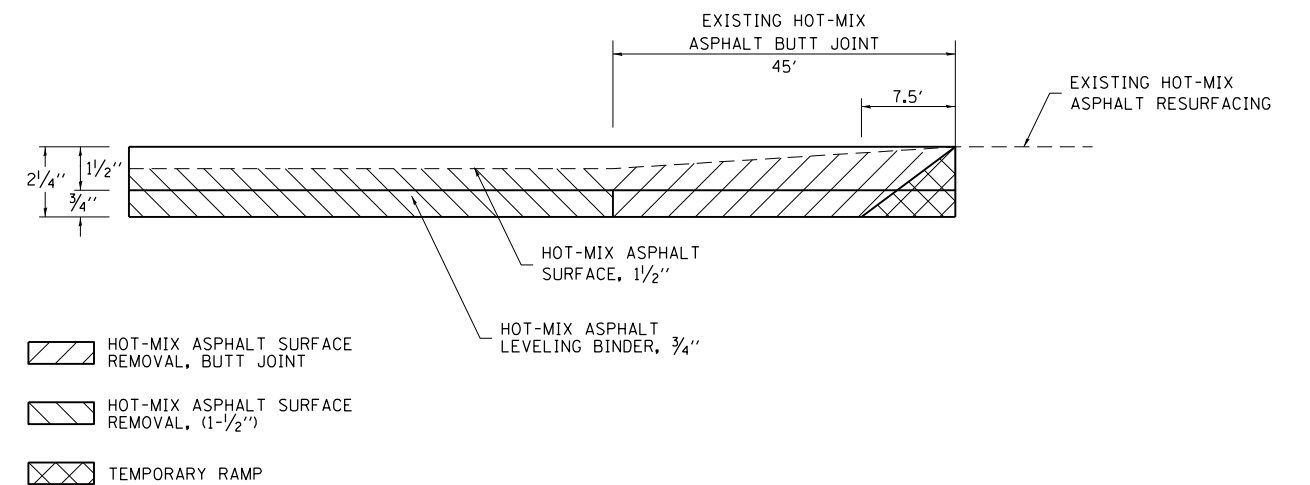
NOTES:

1. MILLING SHALL BE DONE TO ATTAIN A 3/6"/' SLOPE IN CROWN SECTIONS
2. EXISTING S.E. AND S.E. TRANSITIONS SHALL BE MAINTAINED UNLESS OTHERWISE SHOWN ON THE PLANS.
3. MILLING TO THE BOTTOM OF WHEEL RUTS SHALL NOT BE NECESSARY UNLESS REQUIRED TO OBTAIN SLOPE OR THE DESIGN DEPTH AT CENTERLINE.
4. THE AVERAGE DEPTH OF MILLING IS ESTIMATED TO BE 1-1/2" BUT MAY VARY IN ISOLATED LOCATIONS.

HOT MIX ASPHALT SURFACE REMOVAL (1-1/2" DEPTH) DETAIL



BUTT JOINT DETAIL
STA 1010+90 TO STA 10 1011+35



BUTT JOINT REMOVAL DETAIL
STA 1205+50 TO STA 1205+95

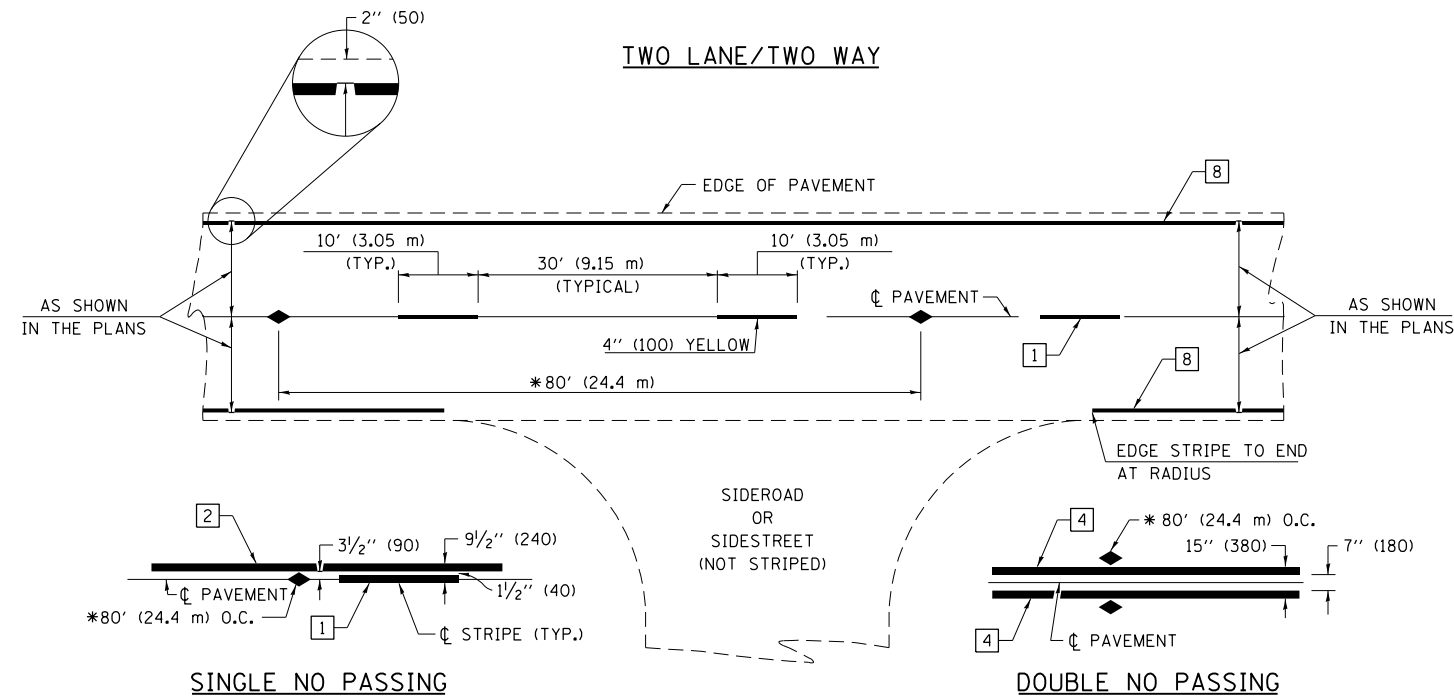
NOTE: NOT DRAWN TO SCALE

FILE NAME =	USER NAME = steffenmk	DESIGNED -	REVISED -
pw:\IL\084EBIDINTEG\illinois.gov\PWIDOT\Documents\IDOT Offices\District 7\Projects\74394\Drawings\CABsheets\0774394-sht-details.dgn		DRAWN -	REVISED -
	PLOT SCALE = 100.0000' / in.	CHECKED -	REVISED -
	PLOT DATE = 12/14/2015	DATE -	REVISED -

**STATE OF ILLINOIS
DEPARTMENT OF TRANSPORTATION**

MISCELLANEOUS DETAILS			
SCALE: N/A	SHEET NO.	OF SHEETS	STA. TO STA.

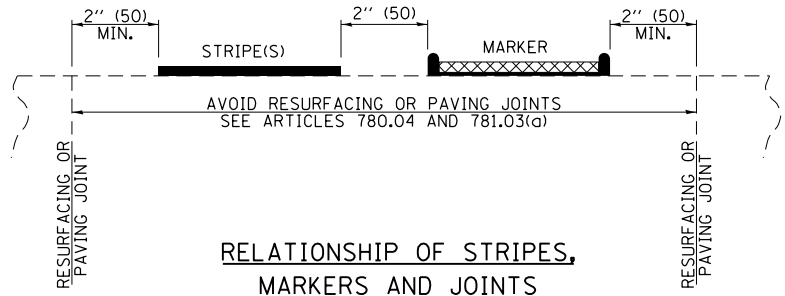
• COLES/CUMBERLAND				
F.A.P. RTE.	SECTION	COUNTY	TOTAL SHEETS	SHEET NO.
824	(16)RS-5 & (15,16)RS-2		18	14
FED. ROAD DIST. NO.				ILLINOIS FED. AID PROJECT
CONTRACT NO. 74394				



* REDUCE TO 40' (12.2 m) O.C. ON CURVES WITH POSTED OR ADVISORY SPEEDS OF 45 mph (70 km/h) OR LESS.

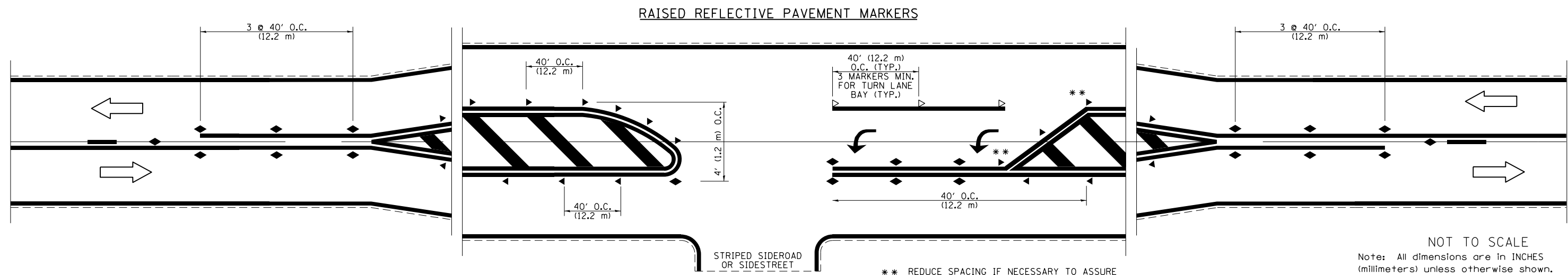
PAVEMENT MARKING LEGEND

- 1 4" (100) SKIP-DASH (YELLOW)
 - 2 4" (100) SOLID (YELLOW)
 - 3 12" (300) DIAGONAL (YELLOW)
 - 4 4" (100) DOUBLE YELLOW (NARROW)
 - 5 12" (300) SOLID WHITE
 - 6 RESERVED
 - 7 6" (150) SKIP-DASH (WHITE)
 - 8 4" (100) SOLID (WHITE)
 - 9 12" (300) DIAGONAL (WHITE)
 - 10 6" (150) SOLID (WHITE)
 - 11 24" (600) STOP BAR (WHITE)
 - 12 8" (200) SOLID (WHITE)
 - 13 4" (100) PARKING WHITE
-

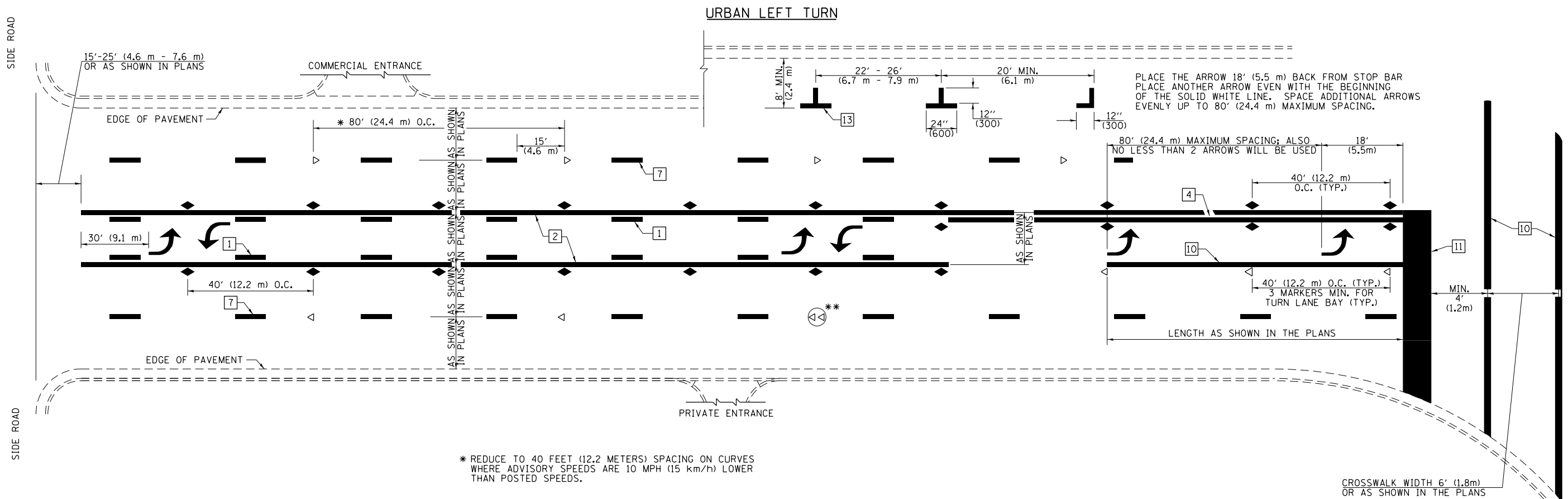


TYPICAL PAVEMENT MARKERS LEGEND

- ◆ TWO-WAY AMBER MARKER
- ▶ ONE-WAY AMBER MARKER
- ▷ ONE-WAY CRYSTAL MARKER



NOT TO SCALE
Note: All dimensions are in INCHES (millimeters) unless otherwise shown.



PLACE THE ARROW 18' (5.5 m) BACK FROM STOP BAR
 PLACE ANOTHER ARROW EVEN WITH THE BEGINNING
 OF THE SOLID WHITE LINE. SPACE ADDITIONAL ARROWS
 EVENLY UP TO 80' (24.4 m) MAXIMUM SPACING.

* REDUCE TO 40 FEET (12.2 METERS) SPACING ON CURVES
 WHERE ADVISORY SPEEDS ARE 10 MPH (15 km/h) LOWER
 THAN POSTED SPEEDS.

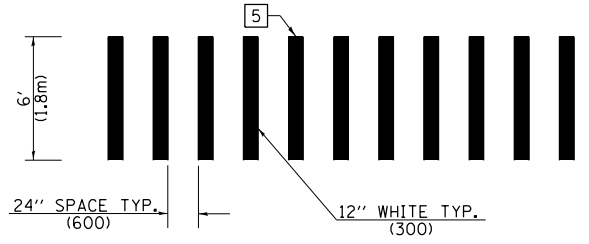
** DOUBLE LANE LINE MARKERS SHALL BE SPECIFIED
 AND SPACED AS SHOWN IN HIGHWAY STANDARD
 781001 FOR MULTI-LANE DIVIDED AND UNDIVIDED
 HIGHWAYS.

PAVEMENT MARKING LEGEND

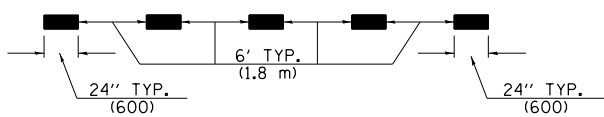
- 1 4" (100) SKIP-DASH (YELLOW)
- 2 4" (100) SOLID (YELLOW)
- 3 12" (300) DIAGONAL (YELLOW)
- 4 4" (100) DOUBLE YELLOW (NARROW)
- 5 12" (300) SOLID WHITE
- 6 RESERVED
- 7 6" (150) SKIP-DASH (WHITE)
- 8 4" (100) SOLID (WHITE)
- 9 12" (300) DIAGONAL (WHITE)
- 10 6" (150) SOLID (WHITE)
- 11 24" (600) STOP BAR (WHITE)
- 12 8" (200) SOLID (WHITE)
- 13 4" (100) PARKING WHITE

GENERAL NOTES

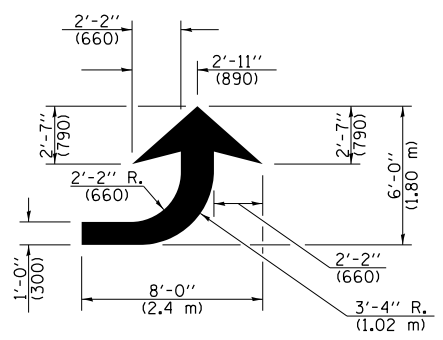
1. TURN ARROW PAIRS SHALL BE PLACED AT 250' (75 m) INTERVALS AND SHALL BE EVENLY SPACED BETWEEN BOTH ENDS OF THE BIDIRECTIONAL LEFT TURN LANE. USE A MINIMUM OF TWO PAIRS PER BLOCK.
2. THE SOLID YELLOW PAVEMENT MARKINGS [2] SHOULD GENERALLY START OR END NEAR THE RADIUS POINT OF EACH STREET RETURN EXCEPT WHERE ONE OR BOTH ENDS WOULD INCLUDE STOP BARS.
3. THE SKIP-DASH PAVEMENT MARKINGS [1] OR [7] SHOULD BE CENTERED BETWEEN BOTH ENDS OF EACH CITY BLOCK AND SHALL BE PLACED SO THEY LINE UP ACROSS FROM EACH OTHER.
4. USE LARGE ARROW SIZE FOR BOTH RURAL AND URBAN LOCATIONS. (SEE LAST PAGE OF SECTION 780x FOR SYMBOLS TABLE)
5. LANE LINE EXTENSIONS SHALL BE THE SAME COLOR AND WIDTH AS THE LANE LINE BEING EXTENDED.



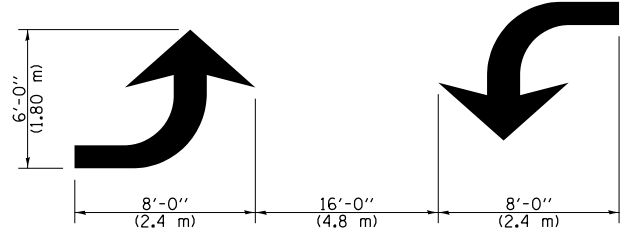
**CROSSWALK DETAIL
 (DECATUR CITY LIMITS ONLY)**



LANE LINE EXTENSIONS



LEFT ARROW
 REVERSE FOR RIGHT ARROW
 AREA = 15.6 SQ. FT. (1.47 m²)
 (WHITE)



**TYPICAL DOUBLE
 TURN ARROWS (WHITE)**

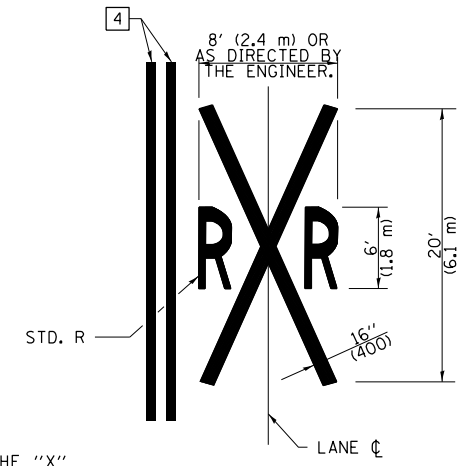
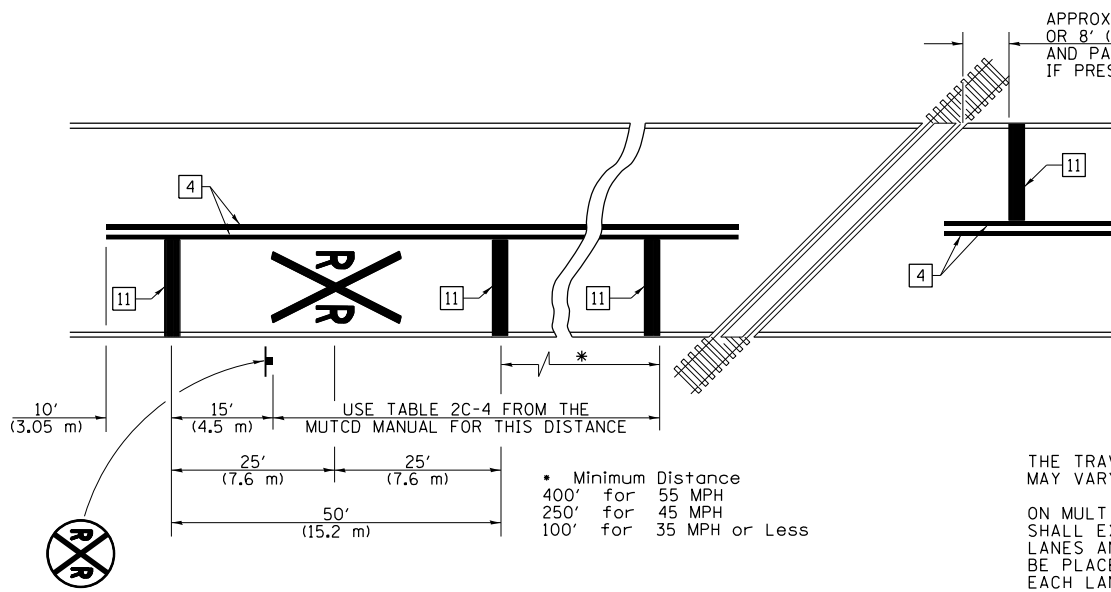
NOT TO SCALE

Note: All dimensions are in INCHES
 (millimeters) unless otherwise shown.

DISTRICT 7 DETAIL NO. 7800001

FILE NAME =	USER NAME = steffenmk	DESIGNED -	REVISED -	STATE OF ILLINOIS DEPARTMENT OF TRANSPORTATION	PAVEMENT MARKING AND RAISED REFLECTIVE PAVEMENT MARKERS (RURAL & URBAN APPLICATIONS)	F.A.P. R.T.E.	SECTION	COUNTY	TOTAL SHEETS	SHEET NO.
pw\11084EBIDINTEG.illinois.gov\PIWIDOT\Documents\DOT Offices\District 7\Projects\74394\Drawings\CABsheets\0774394-sht-details		CHECKED -	REVISED -			824	(16)RS-5 & (15,16)RS-2		18	16
PLOT SCALE = 100.0000' / in.		DATE -	REVISED -			• COLES/CUMBERLAND		CONTRACT NO. 74394		
PLOT DATE = 12/10/2015						ILLINOIS FED. AID PROJECT				

PAVEMENT MARKINGS AT RAILROAD-HIGHWAY GRADE CROSSING



NOTES

THE TRAVERSE SPREAD OF THE "X" MAY VARY ACCORDING TO LANE WIDTH.

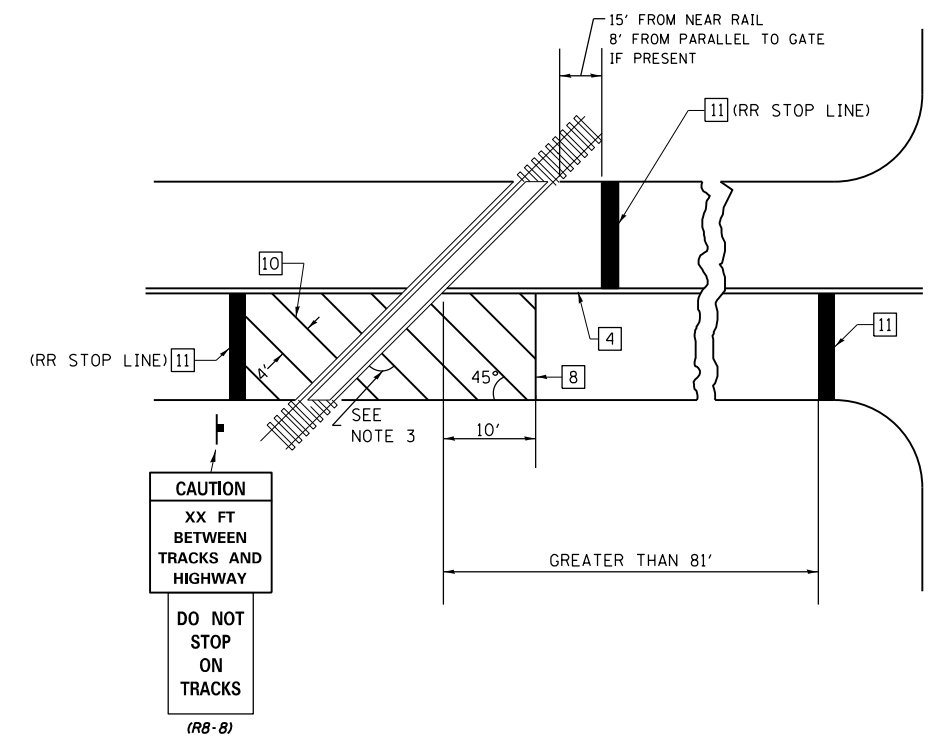
ON MULTI-LANE ROADS, THE STOP LINES SHALL EXTEND ACROSS ALL APPROACH LANES AND SEPARATE RXR SYMBOLS SHALL BE PLACED ADJACENT TO EACH OTHER IN EACH LANE.

WHEN THE PAVEMENT MARKING SYMBOL IS USED, A PORTION OF THE SYMBOL SHOULD BE LOCATED DIRECTLY ADJACENT TO THE ADVANCE WARNING SIGN (W10-1) AS PLACED BY TABLE II-1, CONDITION B OF THE MUTCD.

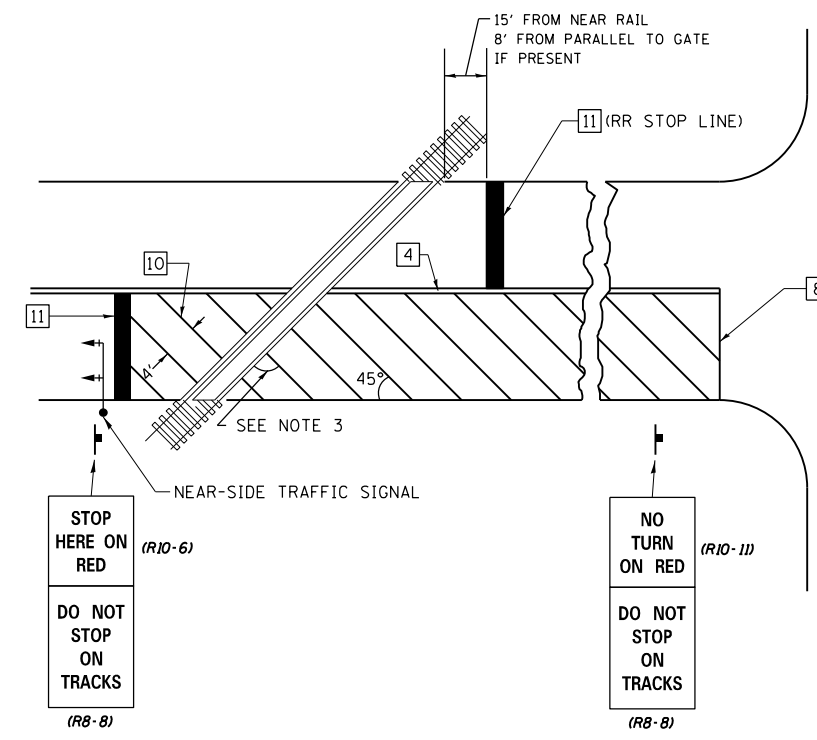
PAVEMENT MARKING LEGEND

- 1 4" (100) SKIP-DASH (YELLOW)
- 2 4" (100) SOLID (YELLOW)
- 3 12" (300) DIAGONAL (YELLOW)
- 4 4" (100) DOUBLE YELLOW (NARROW)
- 5 12" (300) SOLID WHITE
- 6 RESERVED
- 7 6" (150) SKIP-DASH (WHITE)
- 8 4" (100) SOLID (WHITE)
- 9 12" (300) DIAGONAL (WHITE)
- 10 6" (150) SOLID (WHITE)
- 11 24" (600) STOP BAR (WHITE)
- 12 8" (200) SOLID (WHITE)
- 13 4" (100) PARKING WHITE

RAILROAD CROSSING WITH INTERCONNECT ONLY



RAILROAD CROSSING WITH INTERCONNECT AND PRE-SIGNALS



GENERAL NOTES

1. SUPPLEMENTAL PAVEMENT MARKINGS TO BE INSTALLED ONLY ON APPROACHES TO INTERSECTIONS CONTROLLED BY TRAFFIC SIGNALS WHICH ARE INTERCONNECTED WITH THE RAILROAD WARNING SIGNALS.
2. EXTEND PAVEMENT MARKINGS TO THE INTERSECTION ONLY WHERE NEAR-SIDE TRAFFIC SIGNALS ARE USED.
3. WHERE THE ANGLE BETWEEN THE DIAGONAL PAVEMENT MARKINGS AND THE TRACK WOULD BE LESS THAN 20°, THE PAVEMENT MARKINGS SHOULD BE PLACED IN THE OPPOSITE DIRECTION FROM THAT SHOWN.

SUPPLEMENTAL PAVEMENT MARKING TREATMENT FOR RAILROAD-HIGHWAY GRADE CROSSING

NOT TO SCALE

Note: All dimensions are in INCHES (millimeters) unless otherwise shown.

DISTRICT 7 DETAIL NO. 7800001

FILE NAME =	USER NAME = steffennk	DESIGNED -	REVISED -	STATE OF ILLINOIS DEPARTMENT OF TRANSPORTATION	PAVEMENT MARKING AND RAISED REFLECTIVE PAVEMENT MARKERS (RURAL & URBAN APPLICATIONS)	F.A.P. RTE.	SECTION	COUNTY	TOTAL SHEETS	SHEET NO.
pw:\11\084EBIDINTEG.illinois.gov\PIWIDOT\Documents\IDOT Offices\District 7\Projects\74394\Drawings\CAD\Drawings\74394-sht-details.dwg	DATE = 12/10/2015	CHECKED -	REVISED -			824	(16)RS-5 & (15,16)RS-2		18	18
PLOT SCALE = 100.0000' / 1" =	DATE = 12/10/2015	DATE -	REVISED -			• COLES/CUMBERLAND		CONTRACT NO. 74394		
						ILLINOIS FED. AID PROJECT				