

STATE OF ILLINOIS
DEPARTMENT OF TRANSPORTATION
DIVISION OF HIGHWAYS

**PROPOSED
HIGHWAY PLANS**

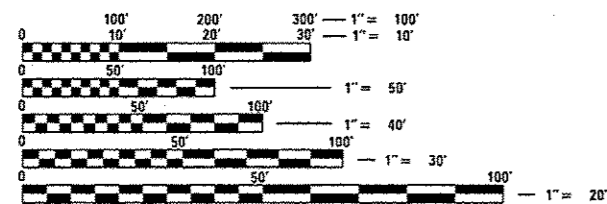
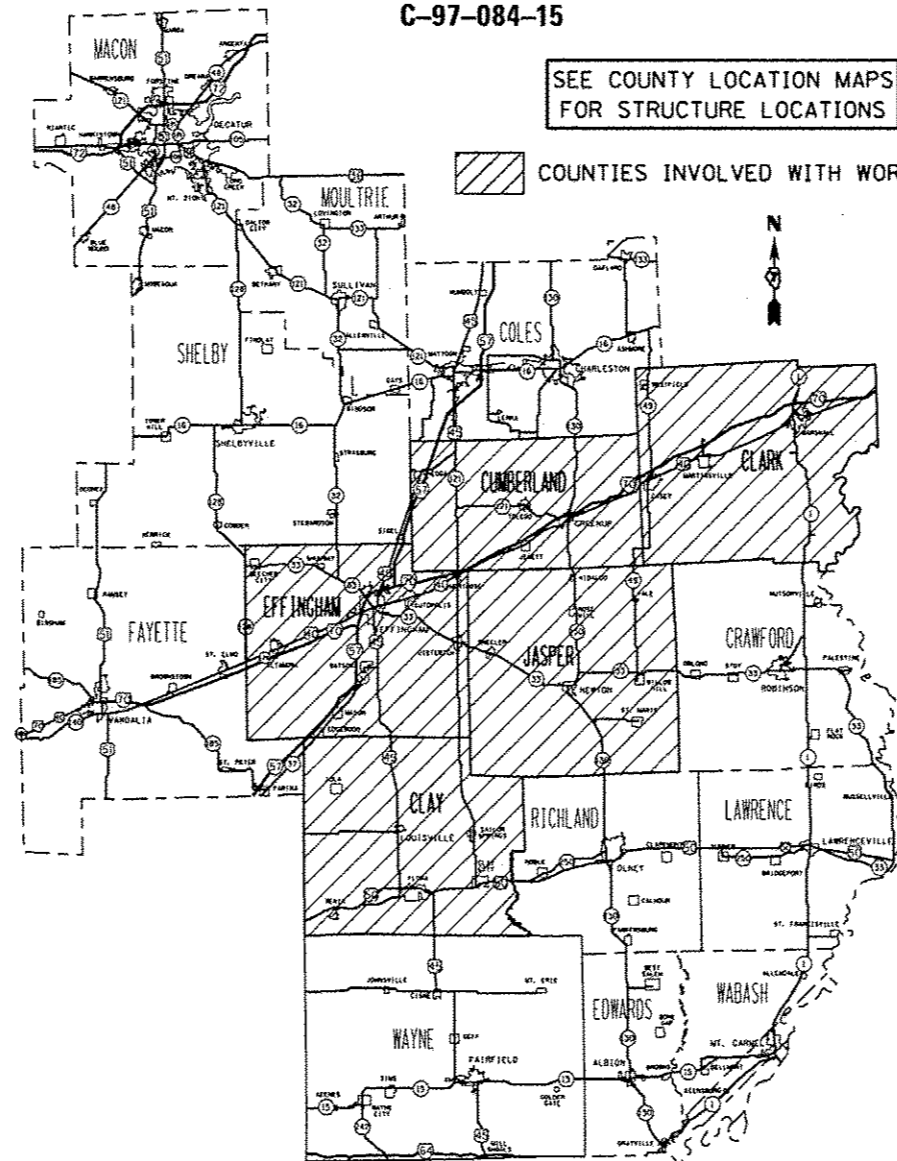
VARIOUS ROUTES
SECTION D7 BRIDGE REPAIRS 2016-5

CAPE SEAL
VARIOUS COUNTIES

C-97-084-15

SEE COUNTY LOCATION MAPS
FOR STRUCTURE LOCATIONS

COUNTIES INVOLVED WITH WORK



FULL SIZE PLANS HAVE BEEN PREPARED USING STANDARD ENGINEERING SCALES. REDUCED SIZED PLANS WILL NOT CONFORM TO STANDARD SCALES. IN MAKING MEASUREMENTS ON REDUCED PLANS, THE ABOVE SCALES MAY BE USED.

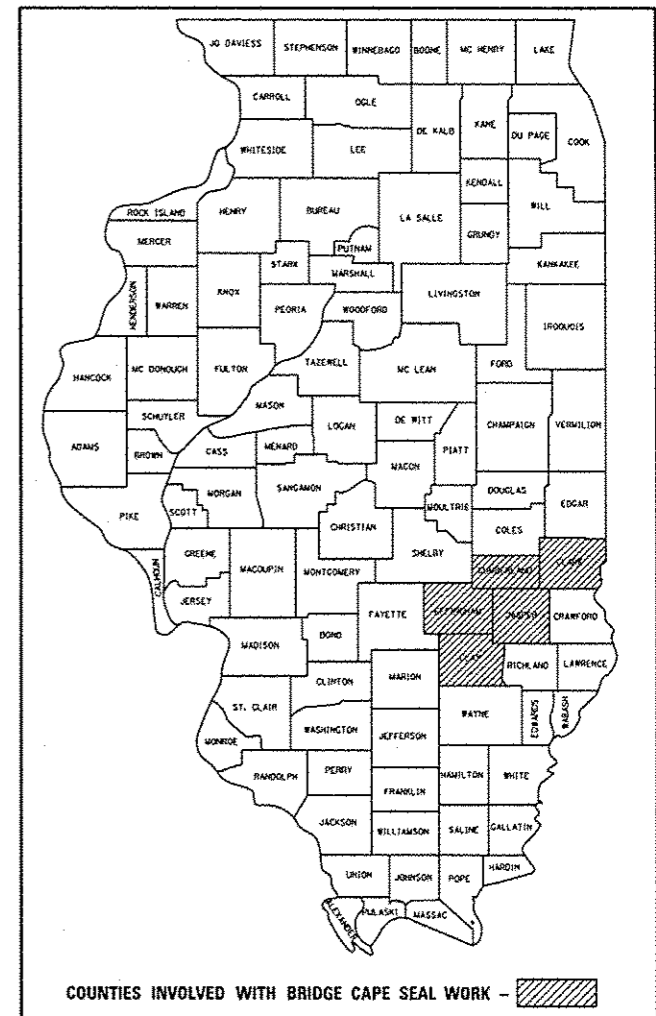
J.U.L.I.E.
JOINT UTILITY LOCATION INFORMATION FOR EXCAVATION
1-800-892-0123
OR 811

PROJECT ENGINEER: TOM RONAN
PROJECT MANAGER: TOM RONAN

CONTRACT NO. 74730

F.A. RTE.	SECTION	COUNTY	TOTAL SHEETS	SHEET NO.
VAR	*	VARIOUS	9	1
		ILLINOIS	CONTRACT NO. 74730	

D-97-036-15



COUNTIES INVOLVED WITH BRIDGE CAPE SEAL WORK -

STATE OF ILLINOIS
DEPARTMENT OF TRANSPORTATION
DIVISION OF HIGHWAYS
SUBMITTED NOVEMBER 25, 2015
Ron L. Dardell
DEPUTY DIRECTOR OF HIGHWAYS, REGION ENGINEER
Jan 29, 2016
Maureen M. Addis PE/BR
ENGINEER OF DESIGN AND ENVIRONMENT
Jan 29, 2016
Over Conran PE/BR
DIRECTOR OF HIGHWAYS, CHIEF ENGINEER

PRINTED BY THE AUTHORITY
OF THE STATE OF ILLINOIS

INDEX OF SHEETS

SHEET NO.	ITEM
1	COVER SHEET
2	INDEX OF SHEETS, GENERAL NOTES, & HIGHWAY STANDARDS
3	SUMMARY OF QUANTITIES
4	SCHEDULES OF QUANTITIES & LOCATIONS
5-9	BRIDGE LOCATION MAPS

THE FOLLOWING STANDARDS ARE A PART OF THESE PLANS AND ARE INCLUDED AFTER SHEET NO. 7:

STD. NO.	DESCRIPTION
000001-06	STANDARD SYMBOLS, ABBREVIATIONS AND PATTERNS
001006	DECIMAL OF AN INCH AND OF A FOOT
701001-02	OFF-ROAD OPERATIONS, 2L, 2W, 15' MINIMUM AWAY FROM PAVEMENT EDGE
701006-05	OFF-ROAD OPERATIONS, 2L, 2W, 15' AWAY TO EDGE OF PAVEMENT
701011-04	OFF-ROAD MOVING OPERATIONS, 2L, 2W, DAY ONLY
701101-04	OFF-ROAD OPERATIONS, MULTI-LANE, 15' AWAY TO EDGE OF PAVEMENT
701106-02	OFF-ROAD OPERATIONS, MULTI-LANE, 15' MINIMUM AWAY FROM PAVEMENT EDGE
701201-04	LANE CLOSURE, 2L, 2W, DAY ONLY, FOR SPEEDS >= 45 MPH
701411-09	LANE CLOSURE, MULTI-LANE, AT ENTRANCE OR EXIT RAMP, FOR SPEEDS >= 45 MPH
701426-07	LANE CLOSURE, MULTI-LANE, INTERMITTENT OR MOVING OPERATION, FOR SPEEDS >= 45 MPH
701901-04	TRAFFIC CONTROL DEVICES

GENERAL NOTES

THIS SECTION SHALL BE CONSTRUCTED IN ACCORDANCE WITH THE PLANS; THE "STANDARD SPECIFICATIONS FOR ROAD AND BRIDGE CONSTRUCTION" ADOPTED JANUARY 1, 2012; AND THE SPECIAL PROVISIONS INCLUDED IN THE PROPOSAL.

THE WORK ON THIS PROJECT IS LOCATED AT TWELVE STRUCTURES IN VARIOUS COUNTIES IN DISTRICT 7. THE WORK ON THIS PROJECT CONSISTS OF THE APPLICATION OF A CAPE SEAL TREATMENT ON THE WEARING SURFACE OF TWELVE STRUCTURES, PAVEMENT MARKING, TRAFFIC CONTROL, AND ANY OTHER WORK NECESSARY TO COMPLETE THE PROJECT.

PLAN DIMENSIONS AND DETAILS RELATIVE TO THE EXISTING STRUCTURES HAVE BEEN TAKEN FROM EXISTING PLANS AND ARE SUBJECT TO NOMINAL CONSTRUCTION VARIATIONS. IT SHALL BE THE CONTRACTOR'S RESPONSIBILITY TO VERIFY DIMENSIONS AND DETAILS IN THE FIELD, AND TO MAKE NECESSARY APPROVED ADJUSTMENTS PRIOR TO CONSTRUCTION OR MATERIAL ACQUISITION. SUCH VARIATIONS SHALL NOT BE CAUSE FOR ADDITIONAL COMPENSATION OR CHANGE IN THE SCOPE OF WORK. THE CONTRACTOR WILL BE PAID FOR THE QUANTITY ACTUALLY FURNISHED AT THE UNIT PRICE BID FOR THE WORK.

THE AGGREGATES FOR THE MICRO-SURFACING SHALL MEET THE FRICTION AGGREGATE REQUIREMENTS FOR MIXTURE D IN ARTICLE 1004.03(a).

EXISTING RAISED REFLECTIVE PAVEMENT MARKERS AND THE EXPANSION JOINTS SHALL BE TEMPORARILY COVERED PRIOR TO APPLICATION OF THE CAPE SEAL TREATMENT TO PREVENT THE MATERIAL FROM BEING APPLIED TO THE MARKERS AND THE EXPANSION JOINTS. THE TEMPORARY TAPE SHALL EXTEND 6" BEYOND EACH END OF THE RAISED REFLECTIVE PAVEMENT MARKERS TO ENSURE THE REFLECTORS ARE VISIBLE UPON COMPLETION OF THE WORK. THE TEMPORARY COVERING SHALL BE REMOVED AFTER APPLICATION OF THE CAPE SEAL TREATMENT AND PRIOR TO OPENING TO TRAFFIC. THE COST OF SUPPLYING, APPLYING, AND REMOVING THE TEMPORARY TAPE IS INCLUDED WITH THE DECK SURFACE TREATMENT SPECIFIED AND NO ADDITIONAL COMPENSATION WILL BE ALLOWED.

PAVEMENT MARKING SHALL BE APPLIED IN ACCORDANCE WITH SECTION 780 OF THE STANDARD SPECIFICATIONS. SHORT TERM PAVEMENT MARKING SHALL BE APPLIED TO THE SEAL COAT AND THE CAPE SEAL AS SPECIFIED IN SECTION 703 OF THE STANDARD SPECIFICATIONS. TEMPORARY TAPE SHALL BE USED ON THE CAPE SEAL AND PAINT SHALL BE USED ON THE SEAL COAT.

THE TOTAL QUANTITY OF PAINT PAVEMENT MARKING - LINE 4" CONSISTS OF 1,606 FEET OF YELLOW AND 6,568 FEET OF WHITE.

•07 BRIDGE REPAIRS 2016-5

FILE NAME =	USER NAME = sstaffan	DESIGNED -	REVISED -	STATE OF ILLINOIS DEPARTMENT OF TRANSPORTATION	INDEX, STANDARDS & GENERAL NOTES	F.A. RTE.	SECTION	COUNTY	TOTAL SHEETS	SHEET NO.	
p:\L\04EBIDINTEG\Illinois.gov\VIDOT\Documents\DOT Offices\District 7\Projects\747\BOWMAN\CARevents\0774730-shr-gennote	PL07 SCALE = 1/8" = 1' / 1/8"	CHECKED -	REVISED -			VAR		VARIOUS	9	2	
Defaults	PL07 DATE = 12/14/2015	DATE -	REVISED -			SCALE: NA	SHEET 1	OF 1	SHEETS	STA.	TO STA.
											CONTRACT NO. 74730

ILLINOIS FED. AID PROJECT

ILLINOIS DEPARTMENT OF TRANSPORTATION			TOTAL QUANTITIES	CONSTRUCTION TYPE CODES				
CODE NO	ITEM	UNIT		CLARK COUNTY 100% STATE	CLAY COUNTY 100% STATE	CUMBERLAND COUNTY 100% STATE	EFFINGHAM COUNTY 100% STATE	JASPER COUNTY 100% STATE
			0014	0014	0014	0014	0014	
67100100	MOBILIZATION	LSUM	1	0.06	0.07	0.14	0.24	0.49
70100450	TRAFFIC CONTROL AND PROTECTION, STANDARD	LSUM	1	0.06	0.07	0.14	0.24	0.49
	701201							
70300100	SHORT TERM PAVEMENT MARKING	FOOT	658	48	59	124	144	283
70301000	WORK ZONE PAVEMENT MARKING REMOVAL	SQ FT	110	8	10	21	24	47
* 78001110	PAINT PAVEMENT MARKING - LINE 4"	FOOT	8175	539	662	1445	2347	3182
78300100	PAVEMENT MARKING REMOVAL	SQ FT	2698	178	218	477	775	1050
Z0064265	CAPE SEAL	SQ YD	13620	798	927	1914	3303	6678

*

7

* SPECIALTY ITEM

*07 BRIDGE REPAIRS 2016-5

SCALE: NA SHEET 1 OF 1 SHEETS STA. TO STA.

SCHEDULE OF QUANTITIES

STRUCTURE NUMBER	COUNTY	WIDTH	LENGTH	CAPE SEAL	PAVEMENT MARKING REMOVAL	SHORT-TERM PAVEMENT MARKING	WORK ZONE PAVEMENT MARKING REMOVAL	PAINT PAVEMENT MARKING - LINE 4"
		FOOT	FOOT	SQ YD	SQ FT	FOOT	SQ FT	FOOT
012-0018	CLARK	30	239.5	798	177.8	47.9	7.9	538.9
013-0017	CLAY	28.6	142	451	105.4	28.4	4.7	319.5
013-0018	CLAY	28.2	152	476	112.9	30.4	5.0	342.0
018-0008	CUMBERLAND	26	456.7	1319	339.1	91.3	15.1	1027.6
018-0028	CUMBERLAND	31	53	183	56.8	10.6	1.7	172.3
018-0057	CUMBERLAND	34	109	412	80.9	21.8	3.6	245.3
025-0080	EFFINGHAM	42.5	189	893	140.3	37.8	6.2	425.3
025-0081	EFFINGHAM	42.5	179	845	192.0	35.8	5.9	581.8
025-0083	EFFINGHAM	42.5	270	1275	356.4	54.0	8.9	1080.0
025-0090	EFFINGHAM	32.6	80	290	85.8	16.0	2.6	260.0
040-0016	JASPER	42.5	966	4562	717.3	193.2	31.9	2173.5
040-0017	JASPER	42.5	448	2116	332.6	89.6	14.8	1008.0
TOTALS				13619	2697	657	108	8174

FILE NAME =	USER NAME = steffenmk	DESIGNED -	REVISED -
pw:\IL\084EBIDINTEG.illinois.gov\PWIDOT\Documents\DOT Offices\District 7\Projects\74730\Drawings\CAD\Sheets\0774730-sht-schedule		DRAWN -	REVISED -
Default	PLOT SCALE = 100.0000' / in.	CHECKED -	REVISED -
	PLOT DATE = 12/14/2015	DATE -	REVISED -

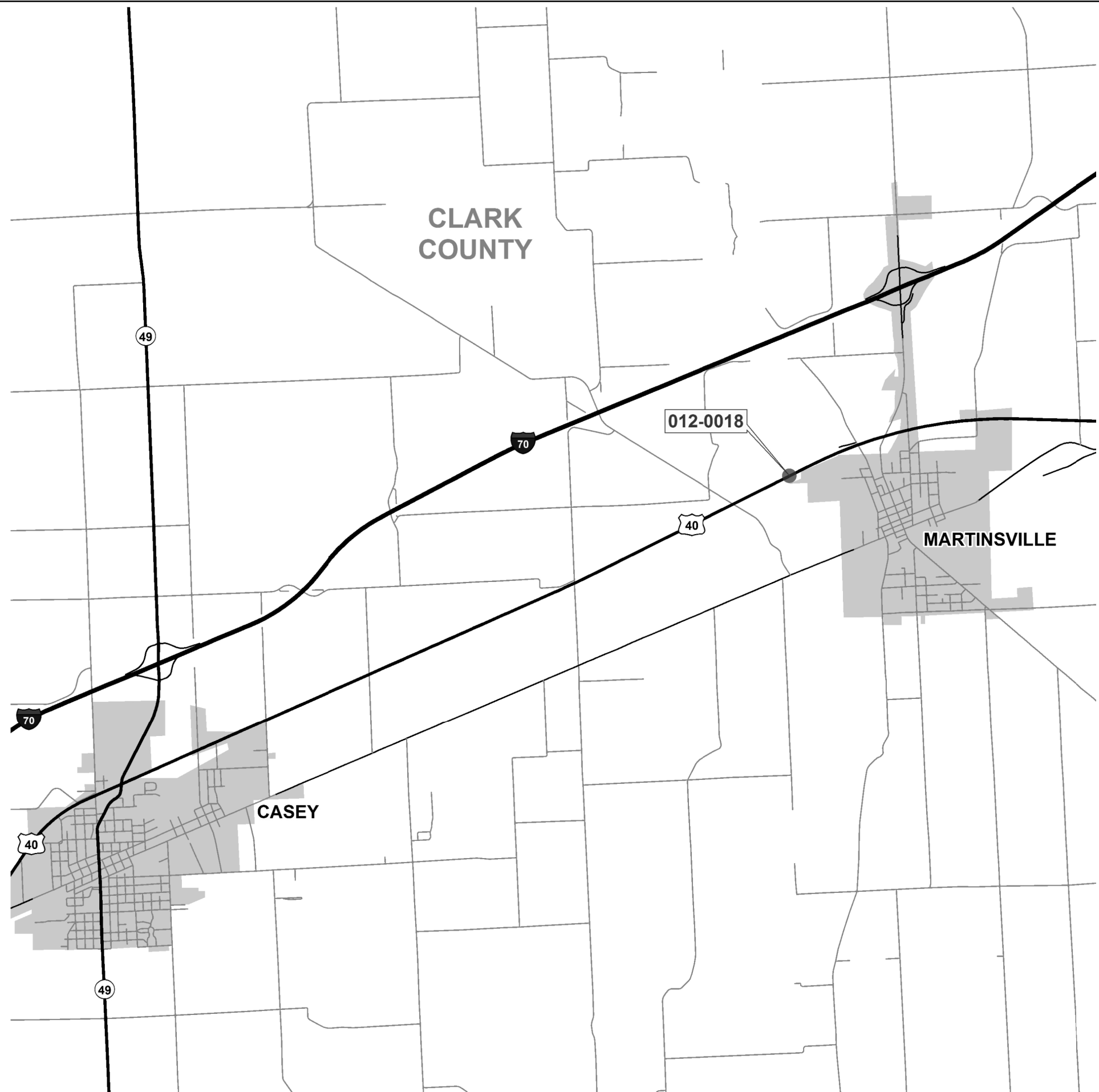
STATE OF ILLINOIS
DEPARTMENT OF TRANSPORTATION

SCHEDULE OF
QUANTITIES

SCALE: NA SHEET 1 OF 1 SHEETS STA. TO STA.

•D7 BRIDGE REPAIRS 2016-5

F.A. RTE.	SECTION	COUNTY	TOTAL SHEETS	SHEET NO.
	•	VARIOUS	9	4
CONTRACT NO. 74730			ILLINOIS FED. AID PROJECT	



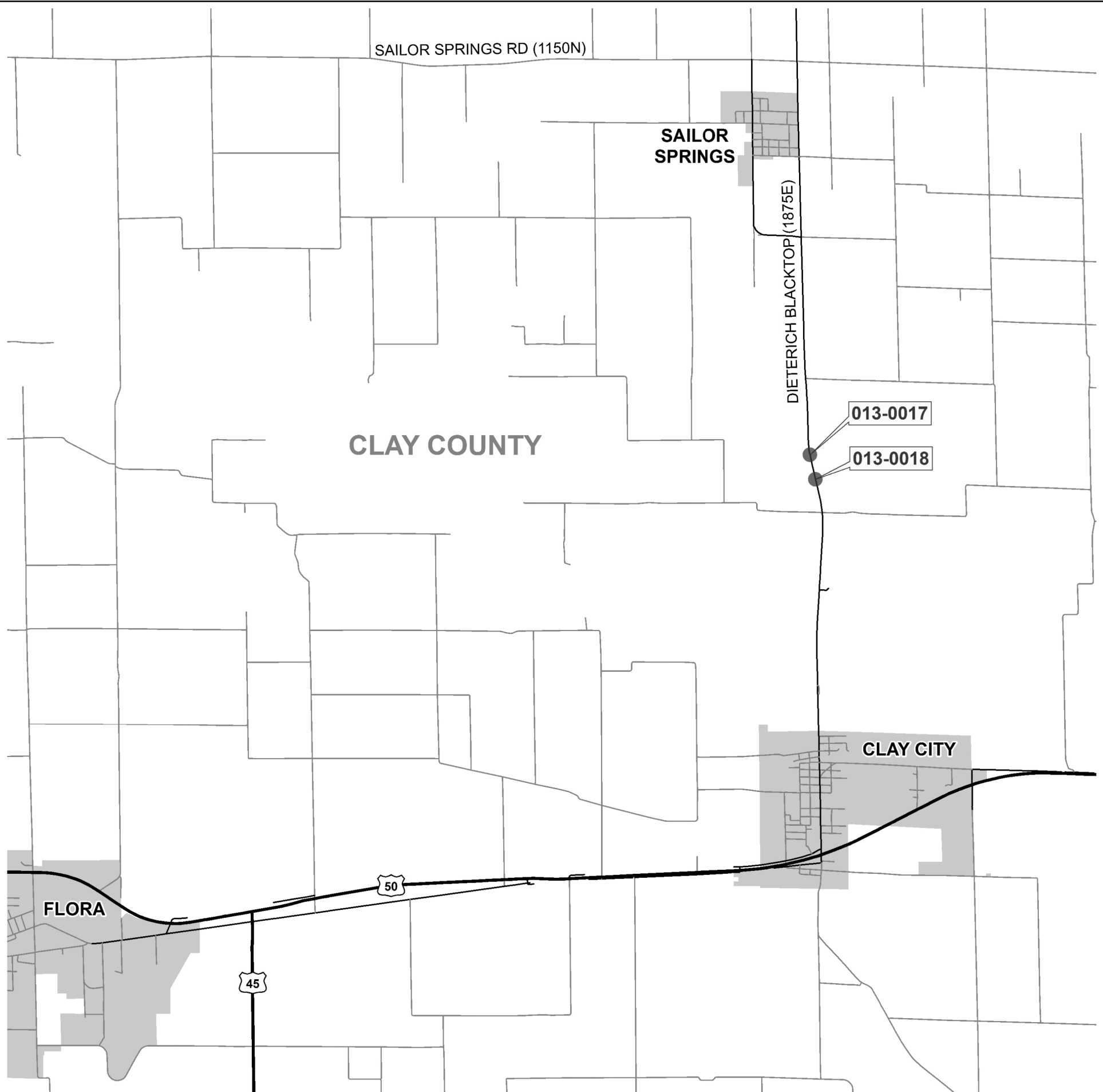
FILE NAME =	USER NAME = steffenk	DESIGNED -	REVISED -
pw:\IL\084EBIDINTEG\illinois.gov\PIWIDOT\Documents\IDOT Offices\District 7\Projects\74730\DRAWING\CAD\Sheets\0774730-sht-loc.dgn		CHECKED -	REVISED -
Default	PLOT DATE = 12/14/2015	DATE -	REVISED -

**STATE OF ILLINOIS
DEPARTMENT OF TRANSPORTATION**

**COUNTY STRUCTURE
LOCATION MAPS**

SCALE: NA SHEET 1 OF 5 SHEETS STA. TO STA.

•07 BRIDGE DECK REPAIRS 2016-5				
F.A. RTÉ.	SECTION	COUNTY	TOTAL SHEETS	SHEET NO.
VAR	•	VARIOUS	9	5
			CONTRACT NO. 74730	
ILLINOIS FED. AID PROJECT				



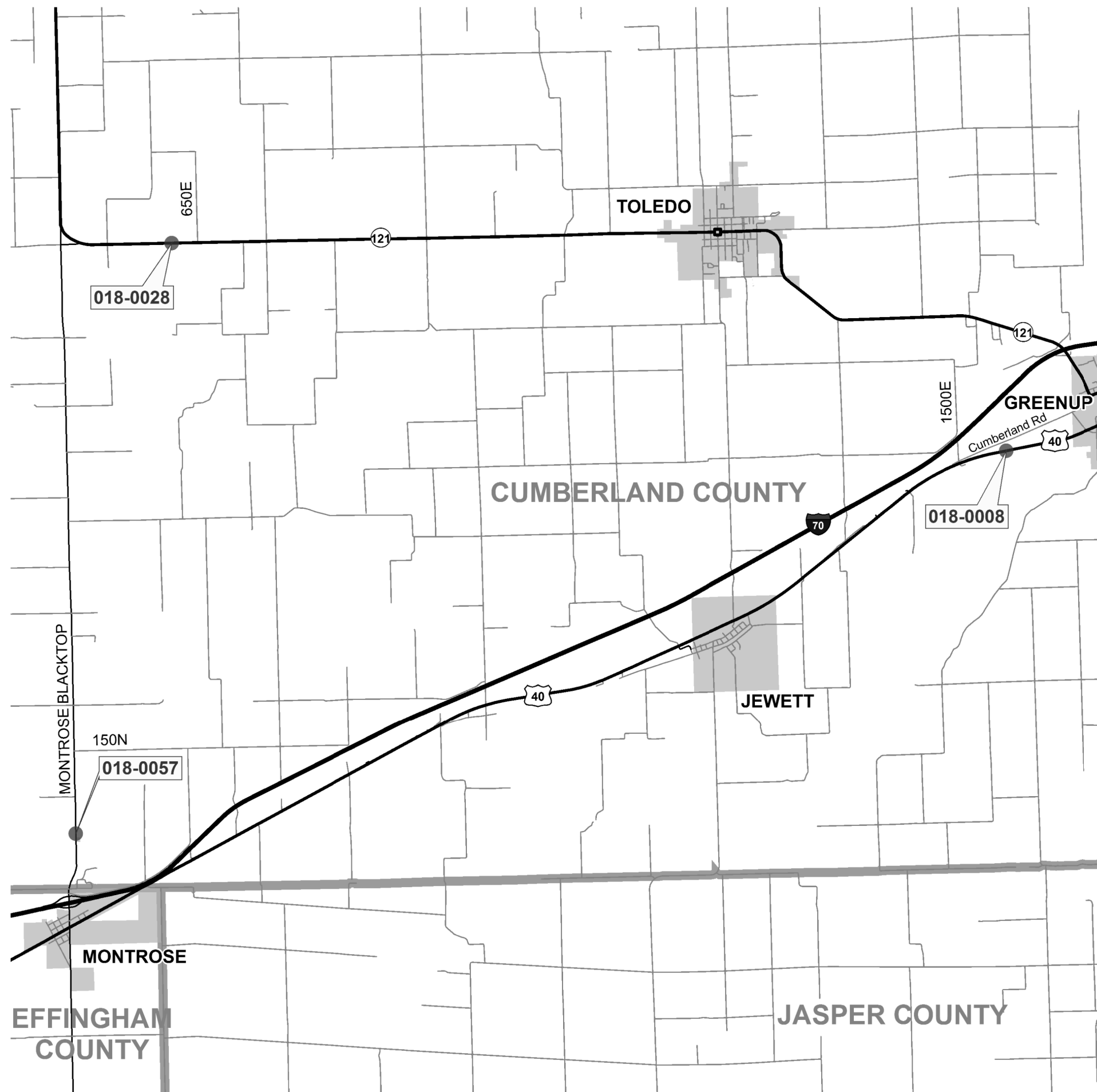
FILE NAME =	USER NAME = steffenk	DESIGNED -	REVISED -
p:\11\084EBIDINTEG.illinois.gov\PWIDOT\Documents\DOT Offices\District 7\Projects\74730\Drawings\CAD\Sheets\0774730-sht-loc.dgn		CHECKED -	REVISED -
Default	PLOT DATE = 12/14/2015	DATE -	REVISED -

**STATE OF ILLINOIS
DEPARTMENT OF TRANSPORTATION**

**COUNTY STRUCTURE
LOCATION MAPS**

SCALE: NA SHEET 2 OF 5 SHEETS STA. TO STA.

•07 BRIDGE DECK REPAIRS 2016-5				
F.A. RTÉ.	SECTION	COUNTY	TOTAL SHEETS	SHEET NO.
VAR	•	VARIOUS	9	6
CONTRACT NO. 74730				
ILLINOIS FED. AID PROJECT				



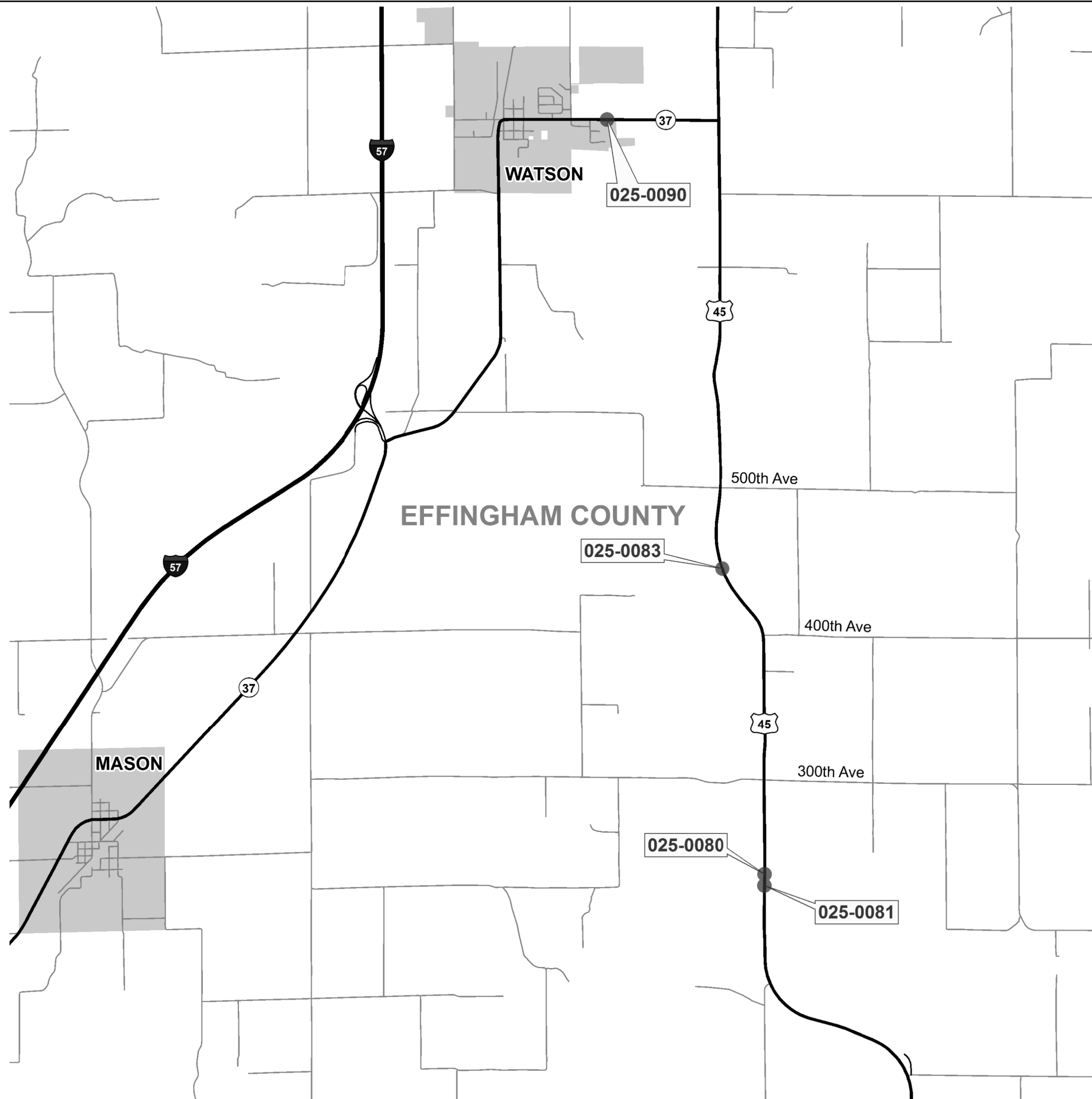
FILE NAME =	USER NAME = steffenk	DESIGNED -	REVISIED -
pw:\IL\084EBIDINTEG\illinois.gov\PWIDOT\Documents\IDOT Offices\District 7\Projects\74730\Drawings\CAD\sheets\0774730-sht-loc.dgn		CHECKED -	REVISIED -
Default	PLOT SCALE = 100.0000' / in.	DATE -	REVISIED -
	PLOT DATE = 12/14/2015		

**STATE OF ILLINOIS
DEPARTMENT OF TRANSPORTATION**

SCALE: NA SHEET 3 OF 5 SHEETS STA. TO STA.

•D7 BRIDGE DECK REPAIRS 2016-5

F.A. RTE.	SECTION	COUNTY	TOTAL SHEETS	SHEET NO.
VAR	•	ILLINOIS	9	7
			CONTRACT NO. 74730	
ILLINOIS FED. AID PROJECT				



FILE NAME =	USER NAME = steffenk	DESIGNED -	REVISED -
pw:\IL\084EBIDINTEG\illinois.gov\PWIDOT\Documents\DOT Offices\District 7\Projects\74730\DRAWING\CAD\sheets\0774730-sht-loc.dgn		REVISION	REVISED -
Default	PLOT SCALE = 100.0000' / in.	CHECKED -	REVISED -
	PLOT DATE = 12/14/2015	DATE -	REVISED -

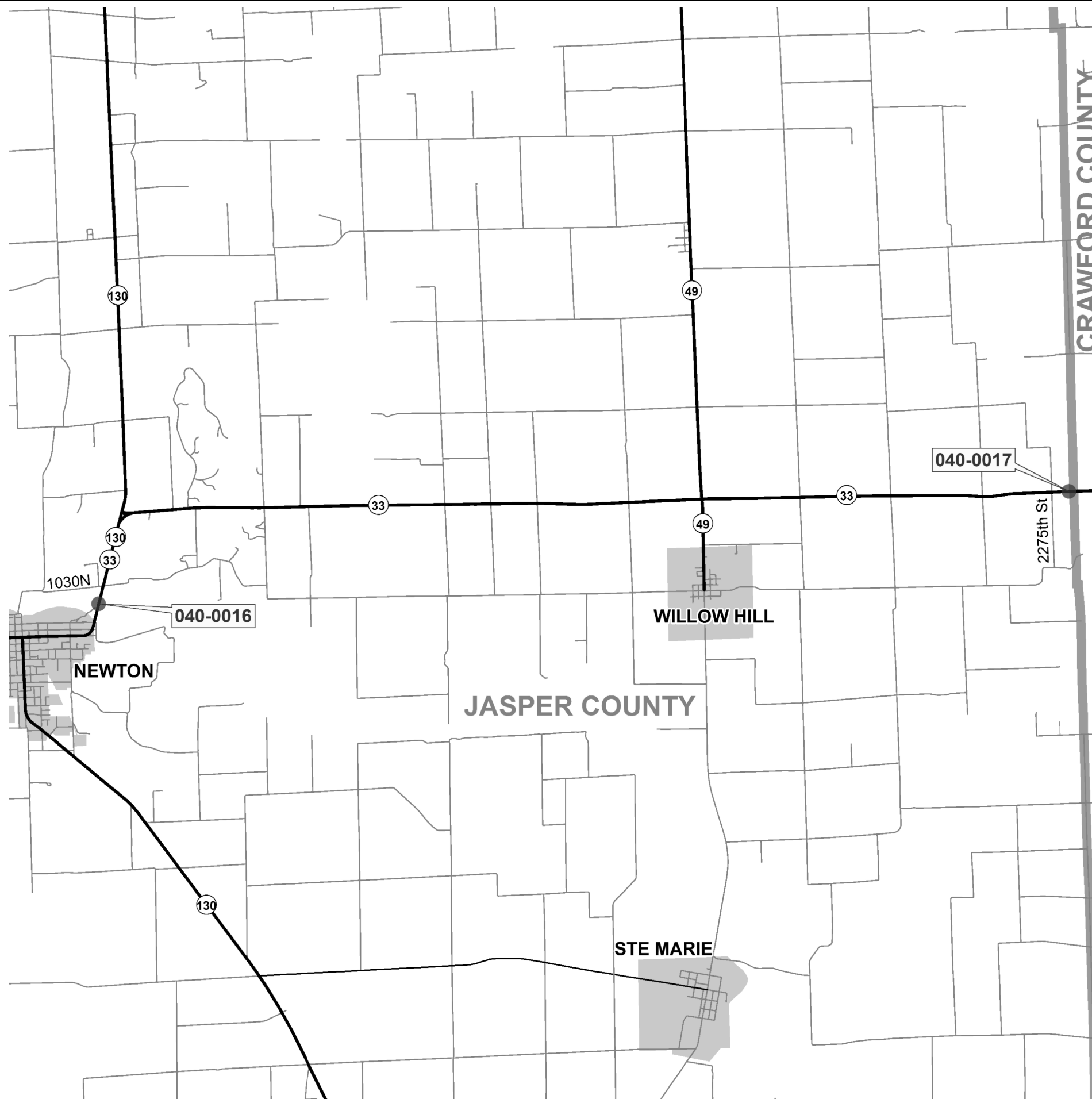
**STATE OF ILLINOIS
DEPARTMENT OF TRANSPORTATION**

**COUNTY STRUCTURE
LOCATION MAPS**

SCALE: NA SHEET 4 OF 5 SHEETS STA. TO STA.

*D7 BRIDGE DECK REPAIRS 2016-5

F.A. RTE.	SECTION	COUNTY	TOTAL SHEETS	SHEET NO.
VAR	*	VARIOUS	9	8
			CONTRACT NO. 74730	
ILLINOIS FED. AID PROJECT				



CRAWFORD COUNTY

040-0017

040-0016

NEWTON

WILLOW HILL

JASPER COUNTY

STE MARIE

130

49

33

33

130

33

1030N

2275th St

130

•D7 BRIDGE DECK REPAIRS 2016-5

FILE NAME =	USER NAME = steffenk	DESIGNED -	REVISED -
p:\11\084EBIDINTEG.illinois.gov\PIWIDOT\Documents\IDOT Offices\District 7\Projects\74730\Drawings\CADsheets\0774730-sht-loc.dgn		DRAWN -	REVISED -
Default	PLOT SCALE = 100.0000' / in.	CHECKED -	REVISED -
	PLOT DATE = 12/14/2015	DATE -	REVISED -

STATE OF ILLINOIS
DEPARTMENT OF TRANSPORTATION

SCALE: NA SHEET 5 OF 5 SHEETS STA. TO STA.

F.A. RTE.	SECTION	COUNTY	TOTAL SHEETS	SHEET NO.
VAR	•	VARIOUS	9	9
CONTRACT NO. 74730			ILLINOIS FED. AID PROJECT	