

STATE OF ILLINOIS
DEPARTMENT OF TRANSPORTATION
DIVISION OF HIGHWAYS

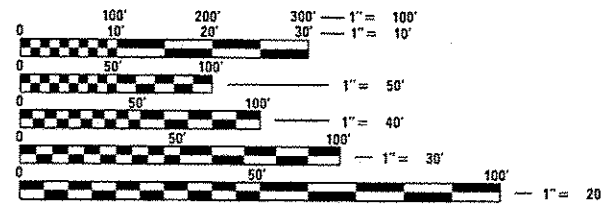
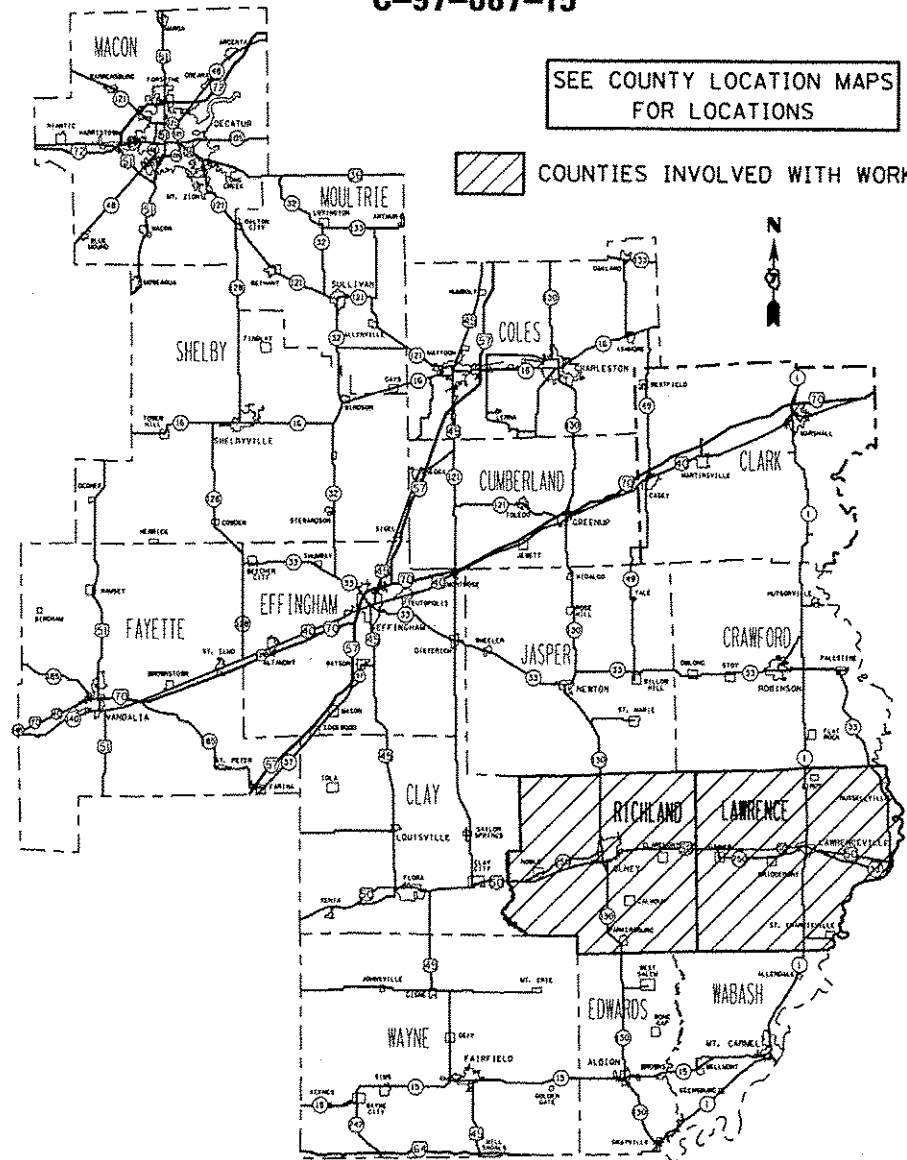
**PROPOSED
HIGHWAY PLANS**

VARIOUS ROUTES
SECTION D7 SEAL COAT 2016-1

SEAL COAT
LAWRENCE AND RICHLAND COUNTY
C-97-087-15

F.A. RTE.	SECTION	COUNTY	TOTAL SHEETS	SHEET NO.
VAR	D7 SEAL COAT 2016-1	ILLINOIS	9	1
* LAWRENCE AND RICHLAND			CONTRACT NO. 74733	

FOR INDEX OF SHEETS, SEE SHEET NO. 2



FULL SIZE PLANS HAVE BEEN PREPARED USING STANDARD ENGINEERING SCALES. REDUCED SIZED PLANS WILL NOT CONFORM TO STANDARD SCALES. IN MAKING MEASUREMENTS ON REDUCED PLANS, THE ABOVE SCALES MAY BE USED.

J.U.L.I.E.
JOINT UTILITY LOCATION INFORMATION FOR EXCAVATION
1-800-892-0123
OR 811

PROJECT ENGINEER: TOM RONAN
PROJECT MANAGER: TOM RONAN
PHONE: (217)-342-8320
CONTRACT NO. 74733

STATE OF ILLINOIS
DEPARTMENT OF TRANSPORTATION
DIVISION OF HIGHWAYS

SUBMITTED NOVEMBER 25 20 15
Roger L. Dinkel
DEPUTY DIRECTOR OF HIGHWAYS, REGION ENGINEER

Jan 29 20 16
Maurice M. Addis PE
ENGINEER OF DESIGN AND ENVIRONMENT

Jan 29 20 16
Oliver Osman PE
DIRECTOR OF HIGHWAYS, CHIEF ENGINEER

PRINTED BY THE AUTHORITY
OF THE STATE OF ILLINOIS

INDEX OF SHEETS

SHEET NO.	ITEM
1	TITLE SHEET
2	INDEX OF SHEETS, HIGHWAY STANDARDS. & GENERAL NOTES
3	SUMMARY OF QUANTITIES
4	SCHEDULE OF QUANTITIES
5 - 9	LOCATION MAPS

THE FOLLOWING STANDARDS ARE A PART OF THESE PLANS AND ARE INCLUDED FOLLOWING SHEET NUMBER 9:

STD. NO.	DESCRIPTION
7010D1-02	OFF ROAD, 2L 2W, 15' MINIMUM FROM EDGE OF PAVEMENT, FOR SPEEDS >= 45 MPH
701006-05	OFF ROAD, 2L 2W, 15' AWAY TO EDGE OF PAVEMENT, FOR SPEEDS >= 45 MPH
701011-04	OFF ROAD, 2L, 2W, MOVING OPERATIONS DAY ONLY, FOR SPEEDS >= 45 MPH
701301-04	LANE CLOSURE, 2L, 2W, SHORT TIME OPERATIONS
701306-03	LANE CLOSURE, 2L, 2W, SLOW MOVING OPERATIONS DAY ONLY, FOR SPEEDS >= 45 MPH
701901-04	TRAFFIC CONTROL DEVICES

GENERAL NOTES

THIS SECTION SHALL BE CONSTRUCTED IN ACCORDANCE WITH THE PLANS; THE "STANDARD SPECIFICATIONS FOR ROAD AND BRIDGE CONSTRUCTION" ADOPTED JANUARY 1, 2012; THE "SUPPLEMENTAL SPECIFICATIONS AND RECURRING SPECIAL PROVISIONS" INDICATED ON THE CHECK SHEET, AND "THE SPECIAL PROVISIONS" INCLUDED IN THIS PROPOSAL.

THE PROPOSED WORK IS LOCATED ON VARIOUS FRONTAGE ROADS ALONG US ROUTE 50 AND ILLINOIS ROUTE 1 IN LAWRENCE AND RICHLAND COUNTIES.

THE WORK IN THIS SECTION CONSISTS OF BASE REPAIR, POTHOLE PATCHING, CONSTRUCTION OF SEAL COAT FOR BITUMINOUS SURFACE TREATMENT CLASS A-2, AND ANY OTHER WORK NECESSARY TO COMPLETE THIS SECTION PER THE STANDARD SPECIFICATIONS. AN ESTIMATED QUANTITY OF HOT-MIX-ASPHALT FOR PATCHING POTHOLES (COLD MIX), PREPARATION OF BASE, AND AGGREGATE BASE REPAIR HAVE BEEN INCLUDED FOR ANY NECESSARY POTHOLE PATCHING OR BASE REPAIRS. THE QUANTITY AND LOCATIONS OF POTHOLE PATCHING AND BASE REPAIR WILL BE DETERMINED BY THE RESIDENT IN THE FIELD. THE CONTRACTOR WILL BE REQUIRED TO USE A ROTARY MIXER CAPABLE OF MIXING THE BASE TO THE BOTTOM OF THE AGGREGATE BASE FOR ALL PREPARATION OF BASE.

REQUIRED RATES OF APPLICATION:

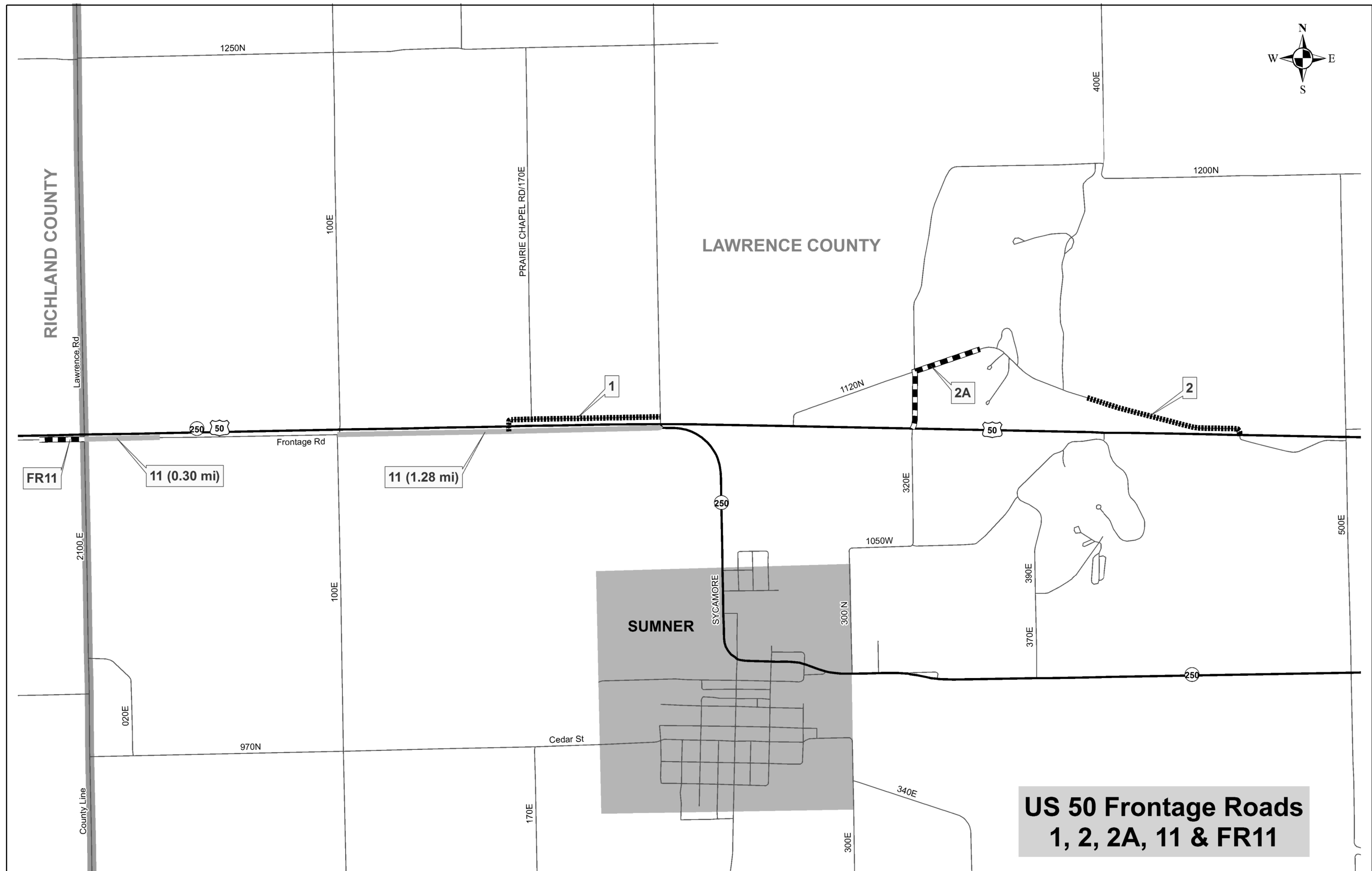
BITUMINOUS MATERIALS (PRIME COAT)	0.35 GALLON / SQ. YD.
BITUMINOUS MATERIALS (COVER & SEAL COAT)	0.35 GALLON / SQ. YD.
SEAL COAT AGGREGATE	25 LBS. / SQ. YD.
COVER COAT AGGREGATE	25 LBS. / SQ. YD.

FILE NAME *	USER NAME * staffannk	DESIGNED -	REVISED -	STATE OF ILLINOIS DEPARTMENT OF TRANSPORTATION	INDEX OF SHEETS AND GENERAL NOTES	F.A. RTE.	SECTION	COUNTY	TOTAL SHEETS	SHEET NO.	
p:\11\0848BID\INTEG\illinois.gov\PIWIDOT\do	projects\DDOT Offices\District 7\Projects\747	DRANN	REVISED -			VAR	07 SEAL COAT 2016-1	*	9	2	
	PLOT SCALE = 1/8" = 1' / in.	CHECKED -	REVISED -			CONTRACT NO. 74733					
Default	PLOT DATE = 12/11/2015	DATE -	REVISED -			ILLINOIS FED. AID PROJECT * LAWRENCE AND RICHLAND COUNTY					

SCALE: N/A SHEET 1 OF 1 SHEETS STA. TO STA.

SCHEDULE OF QUANTITIES

LOCATION	FRONTAGE ROAD	LENGTH (FEET)	WIDTH (FEET)	BIT. MATERIALS (PRIME COAT) (GALLON)	BIT. MATERIALS COVER & SEAL COAT - A-2 (GALLON)	SEAL COAT AGGREGATE (TON)	COVER COAT AGGREGATE (TON)	PREPARATION OF BASE (SQ YD)	AGGREGATE BASE REPAIR (TON)	HMA FOR PATCHING POTHOLES (CM) (TON)
LAWRENCE COUNTY										
1	1	3382	18	2367	4735	85	85	500	15	2
2	11	8349	18	5844	11689	209	209		15	8
3	2	3435	18	2405	4809	86	86			2
4	2A	2642	18	1849	3699	66	66	1000	30	5
5	3	2642	18	1849	3699	66	66	3000	45	5
6	4	10832	18	7582	15165	271	271	300	10	2
7	5	10568	18	7398	14795	264	264			5
8	9	4122	18	2885	5771	103	103			5
9	10	2457	18	1720	3440	61	61			2
10	F	1443	20	1122	2245	40	40			1
11	E	3170	18	2219	4438	79	79	3500	30	5
12	I	2166	16	1348	2695	48	48	300	10	2
13	L	1321	18	925	1849	33	33	900	15	5
14	FR2	3646	18	2552	5104	91	91			2
15	FR3	581	18	407	813	15	15			2
16	FR4	898	18	629	1257	22	22			1
17	FR5	159	18	111	223	4	4			2
LAWRENCE COUNTY TOTALS				43213	86426	1543	1543	9500	170	56
RICHLAND COUNTY										
18	FR11	951	18	666	1331	24	24	0	45	4
RICHLAND COUNTY TOTALS				666	1331	24	24	0	45	4
PROJECT TOTALS				43879	87757	1567	1567	9500	215	60



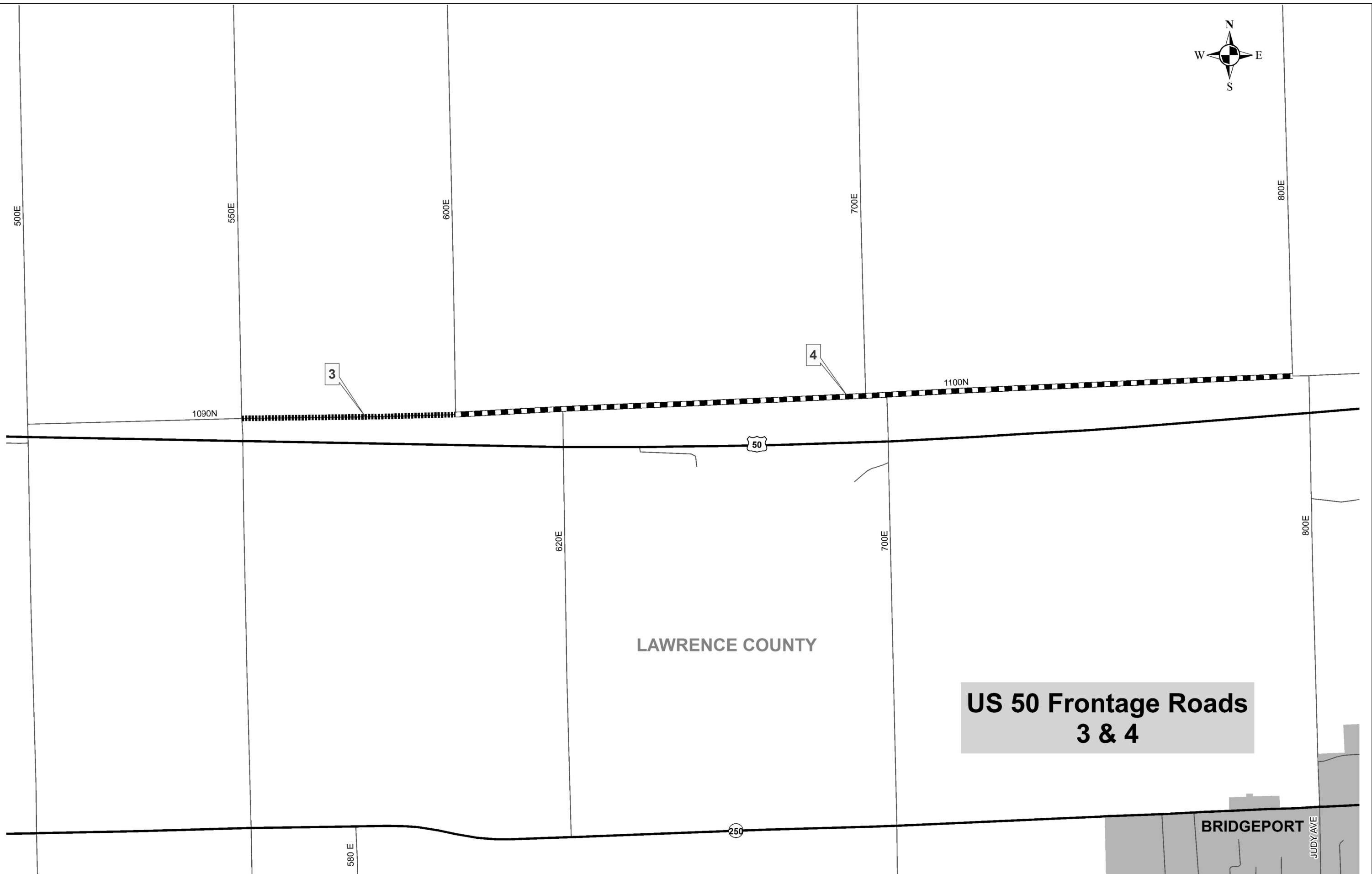
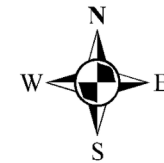
**US 50 Frontage Roads
1, 2, 2A, 11 & FR11**

FILE NAME =	USER NAME = steffenmk	DESIGNED -	REVISED -
pw:\IL\084EBIDINTEG\illinois.gov\PWIDOT\Documents\IDOT Offices\District 7\Projects\74733\Drawings\CAD\Sheets\0774733-sht-plan.dgn		DRAWN -	REVISED -
Default	PLOT SCALE = 100.0000' / in.	CHECKED -	REVISED -
	PLOT DATE = 12/11/2015	DATE -	REVISED -

**STATE OF ILLINOIS
DEPARTMENT OF TRANSPORTATION**

LOCATION MAPS			
SCALE: N/A	SHEET 1	OF 5 SHEETS	STA. TO STA.

F.A. RTE.	SECTION	COUNTY	TOTAL SHEETS	SHEET NO.
VAR	07 SEAL COAT 2016-1		9	5
CONTRACT NO. 74733				
ILLINOIS FED. AID PROJECT				
* LAWRENCE AND RICHLAND COUNTY				



LAWRENCE COUNTY

**US 50 Frontage Roads
3 & 4**

BRIDGEPORT

JUDY AVE

FILE NAME =	USER NAME = steffenk	DESIGNED -	REVISED -
pw:\IL\084EBIDINTEG.illinois.gov\PWIDOT\Documents\IDOT Offices\District 7\Projects\74733\Drawings\CAD\Sheets\0774733-sht-plan.dgn		DRAWN -	REVISED -
Default	PLOT SCALE = 100.0000' / in.	CHECKED -	REVISED -
	PLOT DATE = 12/11/2015	DATE -	REVISED -

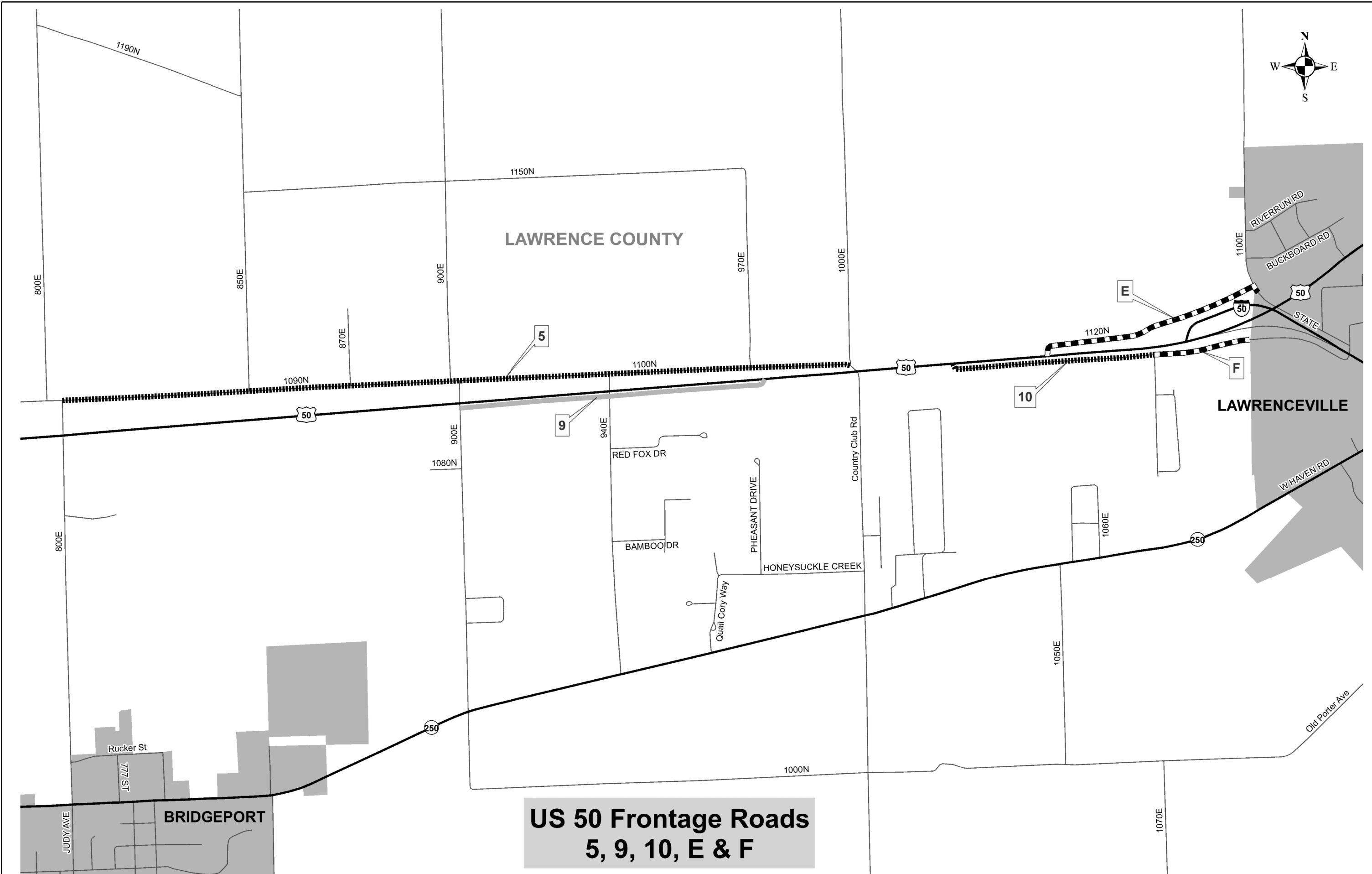
**STATE OF ILLINOIS
DEPARTMENT OF TRANSPORTATION**

LOCATION MAPS

SCALE: N/A SHEET 2 OF 5 SHEETS STA. TO STA.

F.A. RTE.	SECTION	COUNTY	TOTAL SHEETS	SHEET NO.
VAR	D7 SEAL COAT 2016-1		9	6
CONTRACT NO. 74733				

ILLINOIS FED. AID PROJECT
LAWRENCE AND RICHLAND COUNTY



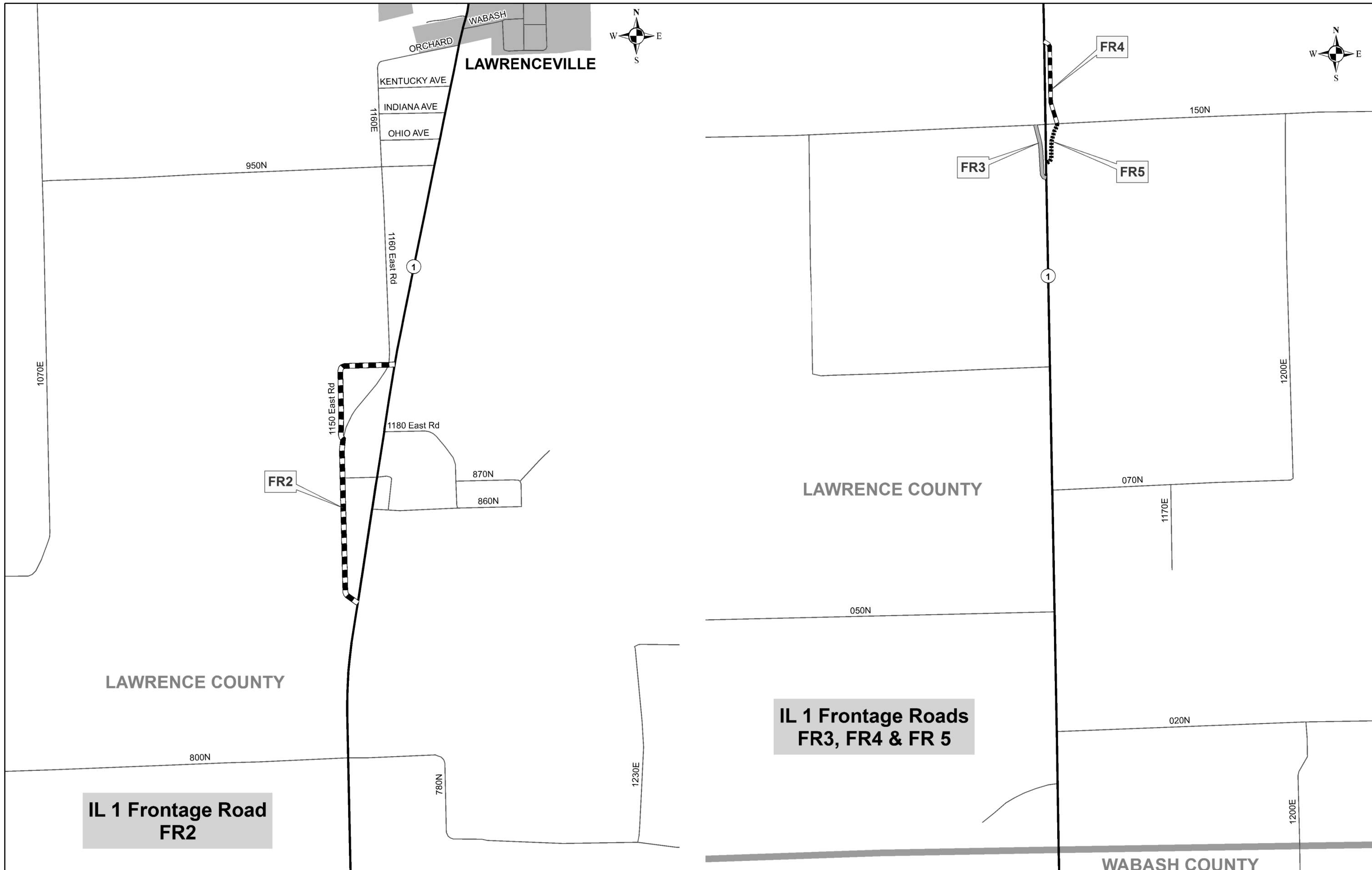
**US 50 Frontage Roads
5, 9, 10, E & F**

FILE NAME =	USER NAME = steffenmk	DESIGNED -	REVISED -
p:\11\084EBIDINTEG.illinois.gov\PWIDOT\Documents\DOT Offices\District 7\Projects\74733\Drawings\CABsheets\0774733-sht-plan.dgn		REVISION	REVISED -
Default	PLOT SCALE = 100.0000' / in.	CHECKED -	REVISED -
	PLOT DATE = 12/11/2015	DATE -	REVISED -

**STATE OF ILLINOIS
DEPARTMENT OF TRANSPORTATION**

LOCATION MAPS			
SCALE: N/A	SHEET 3	OF 5 SHEETS	STA. TO STA.

F.A. RTE.	SECTION	COUNTY	TOTAL SHEETS	SHEET NO.
VAR	07 SEAL COAT 2016-1		9	7
CONTRACT NO. 74733				
ILLINOIS FED. AID PROJECT				
* LAWRENCE AND RICHLAND COUNTY				



**IL 1 Frontage Road
FR2**

**IL 1 Frontage Roads
FR3, FR4 & FR 5**

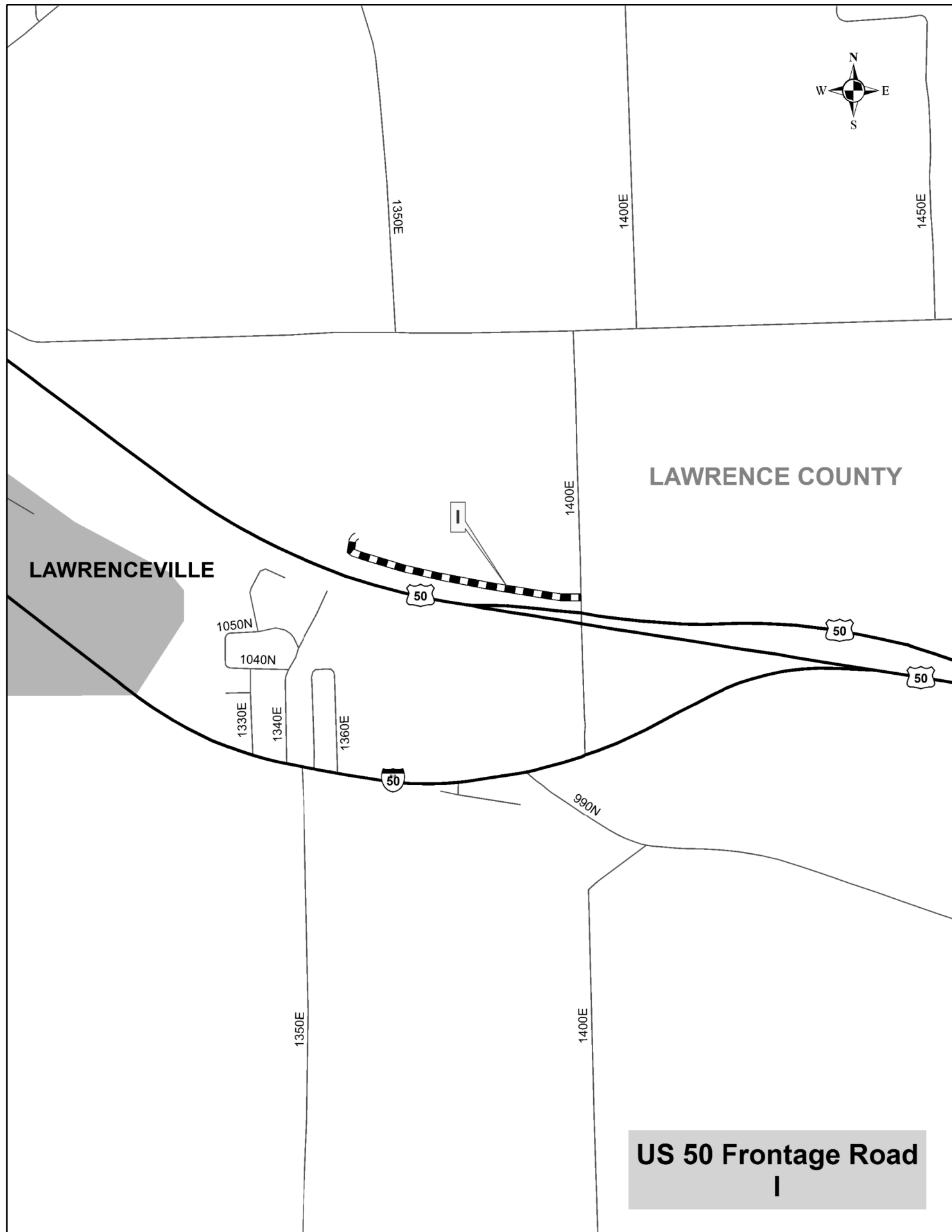
FILE NAME =	USER NAME = steffenmk	DESIGNED -	REVISED -
pw:\IL084EBIDINTEG.illinois.gov\PWIDOT\Documents\DOT Offices\District 7\Projects\74733\Drawings\CADsheets\0774733-sht-plan.dgn		REVISION	REVISED -
Default	PLOT SCALE = 100.0000' / in.	CHECKED -	REVISED -
	PLOT DATE = 12/11/2015	DATE -	REVISED -

**STATE OF ILLINOIS
DEPARTMENT OF TRANSPORTATION**

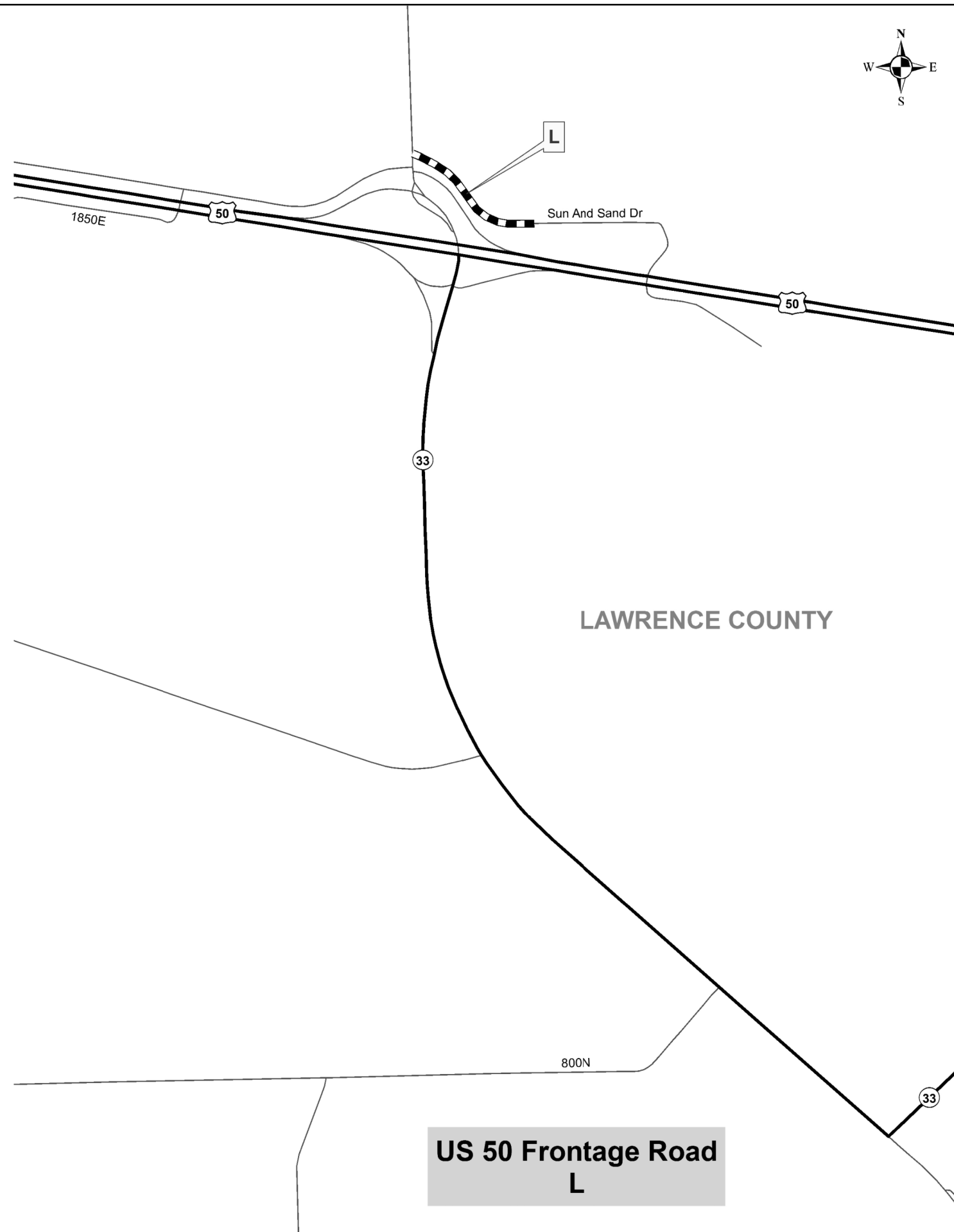
LOCATION MAPS

SCALE: N/A SHEET 4 OF 5 SHEETS STA. TO STA.

F.A. RTE.	SECTION	COUNTY	TOTAL SHEETS	SHEET NO.
VAR	07 SEAL COAT 2016-1		9	8
			CONTRACT NO. 74733	
ILLINOIS FED. AID PROJECT				
• LAWRENCE AND RICHLAND COUNTY				



**US 50 Frontage Road
I**



**US 50 Frontage Road
L**

FILE NAME =	USER NAME = steffenmk	DESIGNED -	REVISED -
p:\11\084EBIDINTEG.illinois.gov\PIWIDOT\Documents\DOT Offices\District 7\Projects\74733\Drawings\CAD\Drawings\0774733-sht-plan.dgn		DRAWN -	REVISED -
Default	PLOT SCALE = 100.0000' / in.	CHECKED -	REVISED -
	PLOT DATE = 12/11/2015	DATE -	REVISED -

**STATE OF ILLINOIS
DEPARTMENT OF TRANSPORTATION**

LOCATION MAPS			
SCALE: N/A	SHEET 5	OF 5 SHEETS	STA. TO STA.

F.A. RTE.	SECTION	COUNTY	TOTAL SHEETS	SHEET NO.
VAR	07 SEAL COAT 2016-1		9	9
CONTRACT NO. 74733				
ILLINOIS FED. AID PROJECT				
* LAWRENCE AND RICHLAND COUNTY				