

03-04-2016 LETTING ITEM 064

**STATE OF ILLINOIS**  
**DEPARTMENT OF TRANSPORTATION**  
**DIVISION OF HIGHWAYS**  
**PROPOSED**  
**HIGHWAY PLANS**

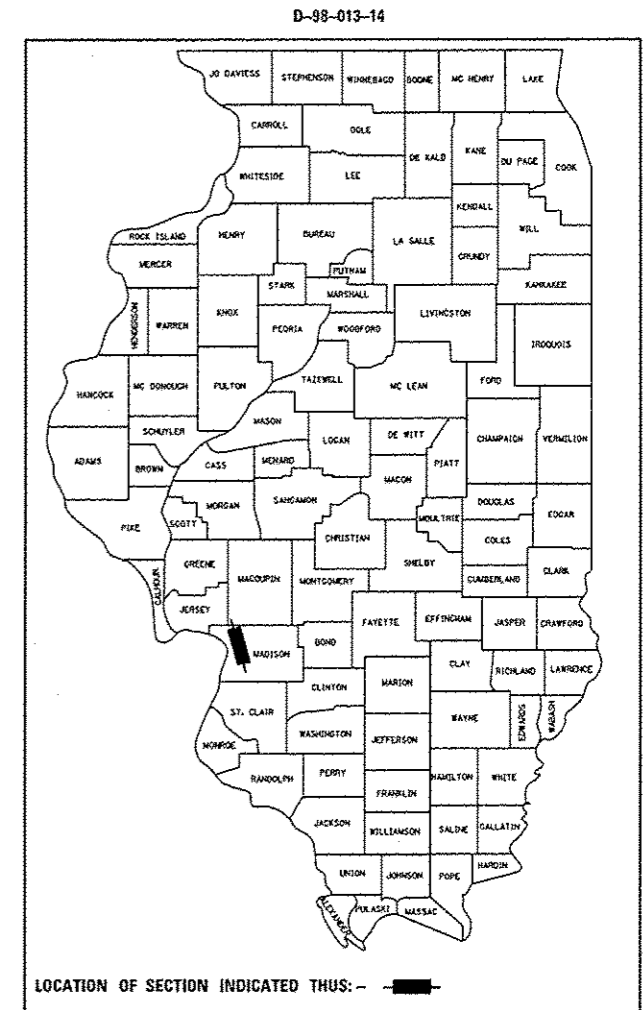
F.A.P. RTE.	SECTION	COUNTY	TOTAL SHEETS	SHEET NO.
310	60-(13,14)RS	MADISON	11	1
		ILLINOIS	CONTRACT NO. 76G87	

FOR INDEX OF SHEETS, SEE SHEET NO. 2

**FAP ROUTE 310 (IL 255)**  
**SECTION 60-(13,14)RS**

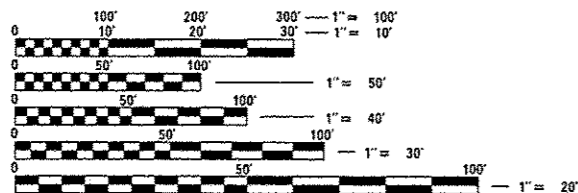
**MICROSURFACING IL 255 FROM**  
**IL 140 TO SEMINARY RD**  
**MADISON COUNTY**

C-98-011-14



**ADT**

2013 ADT = 15,100 (ACTUAL)  
 2015 ADT = 15,400 (ESTIMATED)  
 2035 ADT = 18,800 (ESTIMATED)  
 SU = 6.9%, MU = 3.6%



FULL SIZE PLANS HAVE BEEN PREPARED USING STANDARD ENGINEERING SCALES. REDUCED SIZED PLANS WILL NOT CONFORM TO STANDARD SCALES. IN MAKING MEASUREMENTS ON REDUCED PLANS, THE ABOVE SCALES MAY BE USED.

J.U.L.I.E.  
 JOINT UTILITY LOCATION INFORMATION FOR EXCAVATION  
 1-800-892-0123  
 OR 811

PROJECT ENGINEER -- TIM PADGETT  
 PROJECT MANAGER -- LIZ BURNSIDE

CONTRACT NO. 76G87

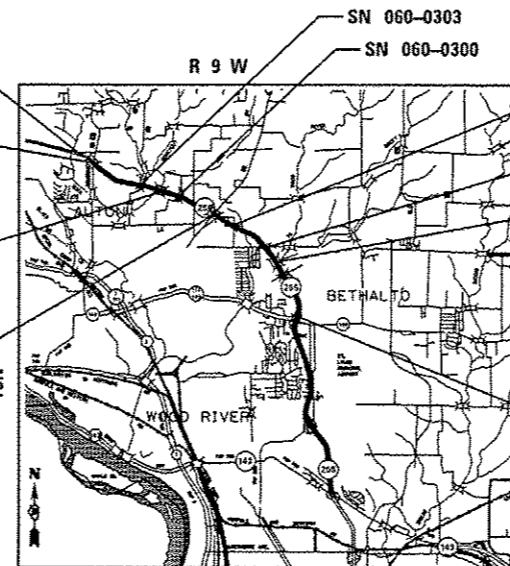
**END PROJECT**

MS 6.14

BRIDGE OMISSION  
 MS 5.96 TO MS 6.0  
 SN 060-0304  
 SN 060-0305

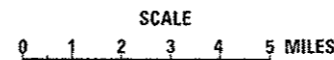
BRIDGE OMISSION  
 MS 4.52 TO MS 4.67  
 SN 060-0301  
 SN 060-0302

BRIDGE OMISSION  
 MS 3.19 TO MS 3.24  
 SN 060-0298  
 SN 060-0299



**BEGIN PROJECT**

MS 0.00



GROSS LENGTH = 32,419 FT. = 6.14 MILE  
 NET LENGTH = 30,835 FT. = 5.84 MILE

STATE OF ILLINOIS  
 DEPARTMENT OF TRANSPORTATION  
 DIVISION OF HIGHWAYS

SUBMITTED *Dec 18 20 15*  
*Jeffrey Z. Kamas*  
 DEPUTY DIRECTOR OF HIGHWAYS, REGION 5 ENGINEER  
*Jan 29 20 16*  
*Maureen M. Addis, PE*  
 acting ENGINEER OF DESIGN AND ENVIRONMENT  
*Jan 29 20 16*  
*Chris Cannon, PE*  
 DIRECTOR OF HIGHWAYS, CHIEF ENGINEER

**PRINTED BY THE AUTHORITY**  
**OF THE STATE OF ILLINOIS**

## GENERAL NOTES

### INDEX OF SHEETS

1	COVER SHEET
2	INDEX OF SHEETS, HIGHWAY STANDARDS, COMMITMENTS AND GENERAL NOTES
3-4	SUMMARY OF QUANTITIES
5-6	TYPICAL SECTIONS
7-9	SCHEDULE OF QUANTITIES
10-11	LOCATION MAP

### HIGHWAY STANDARDS

000001-06  
001006  
701400-08  
701401-09  
701406-09  
701411-09  
701426-07  
701456-03  
780001-05  
781001-03  
701901-04

### COMMITMENTS

NONE

- ① A QUANTITY OF TWO (2) CHANGEABLE MESSAGE SIGNS WERE ADDED TO THE PROJECT TO USE AS DIRECTED BY THE RESIDENT ENGINEER.
- ② THE AGGREGATES FOR THE MICRO-SURFACING SHALL MEET THE FRICTION AGGREGATE REQUIREMENTS FOR MIXTURE "D" IN ARTICLE 1004.03(a).
- ③ BRIDGES ARE OMITTED FROM THE PROJECT EXCEPT FOR PAVEMENT MARKING. PAINT PAVEMENT MARKING SHALL BE USED AT THE BRIDGES AND APPROACHES.
- ④ ILLINOIS STATE LAW REQUIRES A 48-HOUR NOTICE TO BE GIVEN TO UTILITIES BEFORE DIGGING. FIELD MARKING OF FACILITIES MAY BE OBTAINED BY CONTACTING J.U.L.I.E. (1-800-892-0123 OR 811) OR FOR NON-MEMBERS THE UTILITY COMPANY DIRECTLY.
- ⑤ "ROAD CONSTRUCTION AHEAD" SIGNS SHALL BE PLACED AT THE BEGINNING AND END OF THE PROJECT PLUS THE INTERSECTING SIDE ROADS AND REQUIRED RAMPS, AND WILL BE INCLUDED IN THE TRAFFIC CONTROL PAY ITEMS. ALL CONSTRUCTION SIGNS SHALL BE FLUORESCENT ORANGE. (48"X48")
- ⑥ FLAGMEN SHALL BE PRESENT DURING ALL CLOSURE HOURS, INCLUDING LUNCH HOUR, AND NO ADDITIONAL COMPENSATION SHALL BE APPLIED.
- ⑦ THE CONTRACTOR SHALL VERIFY ALL DIMENSIONS AND CONDITIONS IN THE FIELD PRIOR TO CONSTRUCTION AND ORDERING OF MATERIALS.
- ⑧ NO OVERNIGHT LANE CLOSURES SHALL BE ALLOWED.
- ⑨ THE PROPOSED PAVEMENT MARKINGS SHALL BE PLACED IN THE SAME LOCATION AS EXISTING OR AS DIRECTED BY THE RESIDENT ENGINEER.
- ⑩ THE CONTRACTOR SHALL BE AWARE THAT IT MAY BE NECESSARY TO DO SOME CRACK SEALING ACCORDING TO THE PREVENTATIVE MAINTENANCE MICRO-SURFACING SPECIAL PROVISION OR AS DIRECTED BY THE ENGINEER. 25000 FT OF FIBER-MODIFIED ASPHALT CRACK SEALING HAS BEEN ADDED TO THE QUANTITIES FOR THIS WORK.  
THE CONTRACTOR SHALL DEVISE AND SUBMIT A JOINT PLAN THAT MEETS THE APPROVAL OF THE RESIDENT ENGINEER AS REQUIRED BY THE SPECIAL PROVISION "MICRO-SURFACING".
- ⑪ THE ILLINOIS DEPARTMENT OF TRANSPORTATION STRONGLY ENCOURAGES THE PRIME CONTRACTOR AND THEIR APPROVED SUB-CONTRACTORS TO HIRE MINORITY, WOMEN AND DISADVANTAGED INDIVIDUALS FROM ITS FEDERALLY FUNDED HIGHWAY CONSTRUCTION CAREERS TRAINING PROGRAM (HCCTP) TO HELP MEET WORKFORCE AND TRAINEE GOALS. THIS PROGRAM IS TRAINING MINORITIES, WOMEN AND DISADVANTAGED INDIVIDUALS IN HIGHWAY CONSTRUCTION-RELATED SKILLS, E.G., MATH FOR THE TRADES, JOB READINESS, TECHNICAL SKILLS COURSEWORK (CARPENTRY, CONCRETE FLATWORK, BLUEPRINT READING, SITE PLANS, SITE WORK, TOOLS USE, ETC.) AND OSHA 10 HOUR CERTIFICATION, TO PREPARE THEM FOR A CAREER IN THE HIGHWAY CONSTRUCTION TRADES. GRADUATES ARE WELL-TRAINED AND READY TO BECOME PRODUCTIVE ENTRY-LEVEL CONSTRUCTION WORKERS. PLEASE CONTACT THE DISTRICT B EEO OFFICE AT 618-346-3360 AND/OR THE HCCTP COORDINATOR AT 618-874-6528 TO LEARN MORE ABOUT THE PROGRAM AND FOR ASSISTANCE IN MEETING WORKFORCE AND TRAINEE GOALS.
- ⑫ SHORT-TERM PAVEMENT MARKING SHALL BE APPLIED BEFORE AND AFTER THE MICRO-SURFACING. BOTH LIFTS SHALL BE REMOVED AND PAID FOR AS (WORK ZONE PAVEMENT MARKING REMOVAL-SQ FT). A QUANTITY FOR TEMPORARY PAVEMENT MARKING EQUAL TO THE AMOUNT OF THERMOPLASTIC PAVEMENT MARKINGS HAS BEEN ADDED TO THE PLANS.

- ⑬ MICRO-SURFACING SHALL NOT COVER EXISTING RUMBLE STRIP IN THE SHOULDER.
- ⑭ THE FOLLOWING MIXTURE REQUIREMENTS ARE APPLICABLE FOR THIS PROJECT:

MIXTURE REQUIREMENTS - MICRO SURFACING PROJECT		
ROUTE	FAP 310 (IL 255)	
SECTION	60-(13,14)RS	
COUNTY	MADISON	
CONTRACT	76G87	
DESCRIPTION:	MICRO-SURFACING IL 255 FROM IL 140 TO SEMINARY ROAD	
ADT (Construction Yr)	15,100	
MU%:	3.6	
SU%:	6.9	
20 YR. ESAL'S:	3.94	
MIXTURE USE	MICRO-SURFACING	INCIDENTAL
AC/PG		PG64-22
RAP % (MAX)		SEE SPECS.
DESIGN AIR VOIDS		4.0% @ N70
MIX COMPOSITION (GRADATION MIXTURE)		IL 9.5
FRICTION AGG	MIXTURE "D"	MIXTURE "D"
QUALITY MGMT PROGRAM		QC/OA
MIXTURE USE	PATCHING	
AC/PG	PG64-22	
RAP % (MAX)	SEE SPECS.	
DESIGN AIR VOIDS	4.0% @ N70	
MIX COMPOSITION (GRADATION MIXTURE)	IL 9.5	
FRICTION AGG	MIXTURE "D"	
QUALITY MGMT PROGRAM		QC/OA

PLAN QUANTITIES FOR BITUMINOUS CONCRETE SURFACE COURSE ITEMS ARE CALCULATED USING A UNIT WEIGHT OF 112 LB/SQ YD/IN (59.8KG/SQ M/25MM THICKNESS).

FILE NAME	USER NAME = BunnsideEM	DESIGNED -	REVISED -	<b>STATE OF ILLINOIS DEPARTMENT OF TRANSPORTATION</b>	<b>INDEX OF SHEETS, COMMITMENTS, HIGHWAY STANDARDS AND GENERAL NOTES</b>	F.A.P. RTE.	SECTION	COUNTY	TOTAL SHEETS	SHEET NO.	
		CHECKED -	REVISED -			310	60-113,14RS	MADISON	11	2	
		DATE -	REVISED -			CONTRACT NO. 76G87					
						SCALE:	SHEET	OF	SHEETS	STA.	TO
ILLINOIS FED. AID PROJECT											

# SUMMARY OF QUANTITIES

SUMMARY OF QUANTITIES				CONSTR. CODE	
CODE NO.	ITEM	UNIT	TOTAL QUANTITY	URBAN 100% STATE	
				ROADWAY 0005	NONE
40600275	BITUMINOUS MATERIALS (PRIME COAT)	POUND	28783	28783	
67000400	ENGINEER'S FIELD OFFICE, TYPE A	CAL MO	4	4	
67100100	MOBILIZATION	LSUM	1	1	
70100420	TRAFFIC CONTROL AND PROTECTION, STANDARD 701411	EACH	10	10	
70100700	TRAFFIC CONTROL AND PROTECTION, STANDARD 701406	LSUM	1	1	
70100800	TRAFFIC CONTROL AND PROTECTION, STANDARD 701401	LSUM	1	1	
70100825	TRAFFIC CONTROL AND PROTECTION, STANDARD 701456	LSUM	1	1	
70106800	CHANGEABLE MESSAGE SIGN	CAL MO	8	8	
70300100	SHORT TERM PAVEMENT MARKING	FOOT	14425	14425	
70300210	TEMPORARY PAVEMENT MARKING LETTERS AND SYMBOLS	SQ FT	168	168	
70300220	TEMPORARY PAVEMENT MARKING - LINE 4"	FOOT	160364	160364	
70300250	TEMPORARY PAVEMENT MARKING - LINE 8"	FOOT	7722	7722	
70301000	WORK ZONE PAVEMENT MARKING REMOVAL	SQ FT	9616	9616	
* 14 78000100	THERMOPLASTIC PAVEMENT MARKING - LETTERS AND SYMBOLS	SQ FT	168	168	

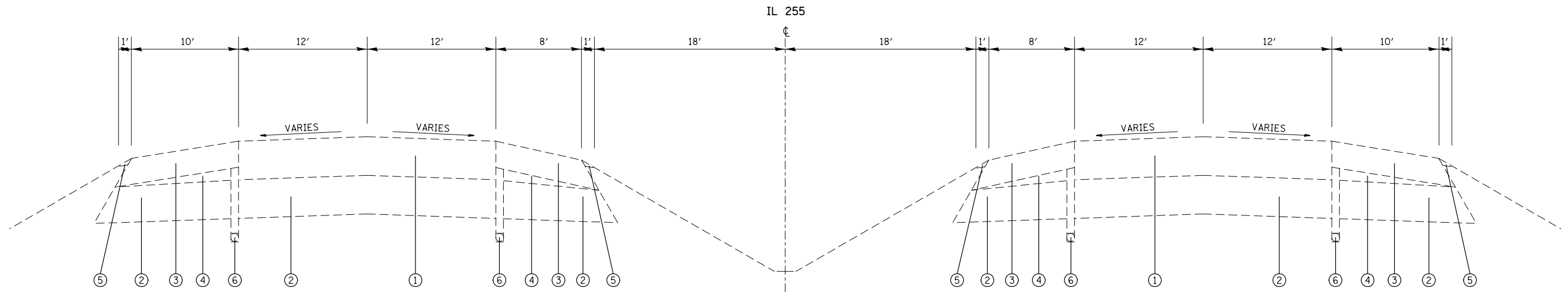
SUMMARY OF QUANTITIES				CONSTR. CODE	
CODE NO.	ITEM	UNIT	TOTAL QUANTITY	URBAN 100% STATE	
				ROADWAY 0005	NONE
* 78000200	THERMOPLASTIC PAVEMENT MARKING - LINE 4"	FOOT	160364	160364	
* 78000500	THERMOPLASTIC PAVEMENT MARKING - LINE 8"	FOOT	7722	7722	
* 78001110	PAINT PAVEMENT MARKING - LINE 4"	FOOT	7199	7199	
* 78100100	RAISED REFLECTIVE PAVEMENT MARKER	EACH	1842	1842	
78300100	PAVEMENT MARKING REMOVAL	SQ FT	58262	58262	
78300200	RAISED REFLECTIVE PAVEMENT MARKER REMOVAL	EACH	1842	1842	
X0326218	FIBER-MODIFIED ASPHALT CRACK SEALING	FOOT	25000	25000	
X0326219	BUMP REMOVAL	EACH	1	1	
X4405020	LONGITUDINAL PARTIAL DEPTH REMOVAL 2"	FOOT	27893	27893	
X4406220	PARTIAL DEPTH REMOVAL, TYPE II, 2"	SQ YD	18	18	
X4406420	PARTIAL DEPTH REMOVAL, TYPE III, 2"	SQ YD	83	83	
X4406620	PARTIAL DEPTH REMOVAL, TYPE IV, 2"	SQ YD	143	143	
X4420900	LONGITUDINAL PARTIAL DEPTH PATCHING	TON	378	378	
X4421000	PARTIAL DEPTH PATCHING	TON	27	27	

\* SPECIALTY ITEM

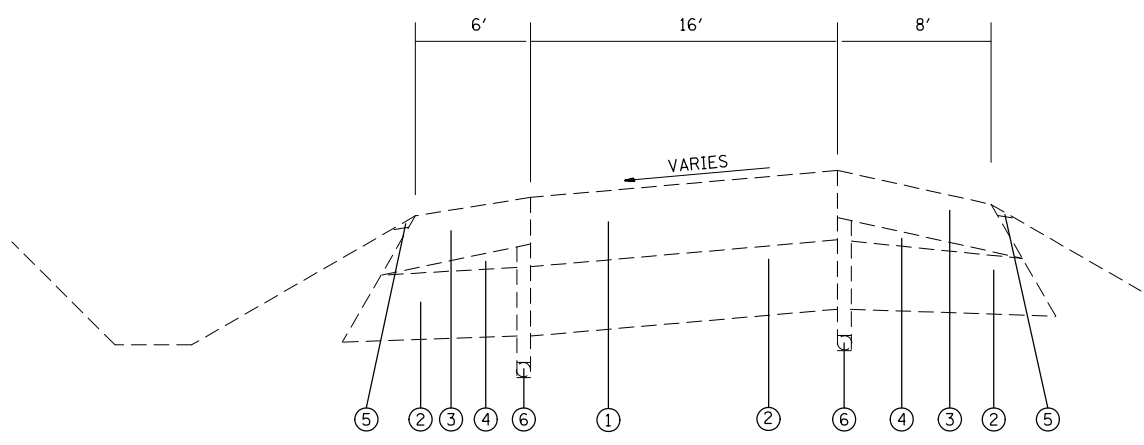
# SUMMARY OF QUANTITIES

SUMMARY OF QUANTITIES				CONSTR. CODE
CODE NO.	ITEM	UNIT	TOTAL QUANTITY	URBAN 100% STATE
				ROADWAY
				0005 NONE
X7010410	SPEED DISPLAY TRAILER	CAL MO	8	8
Z0063804	MICRO-SURFACING, SINGLE PASS, TYPE II, MIXTURE D	SQ YD	213205	213205

2



TANGENT TYPICAL SECTION  
MS 0.00 TO MS 6.14

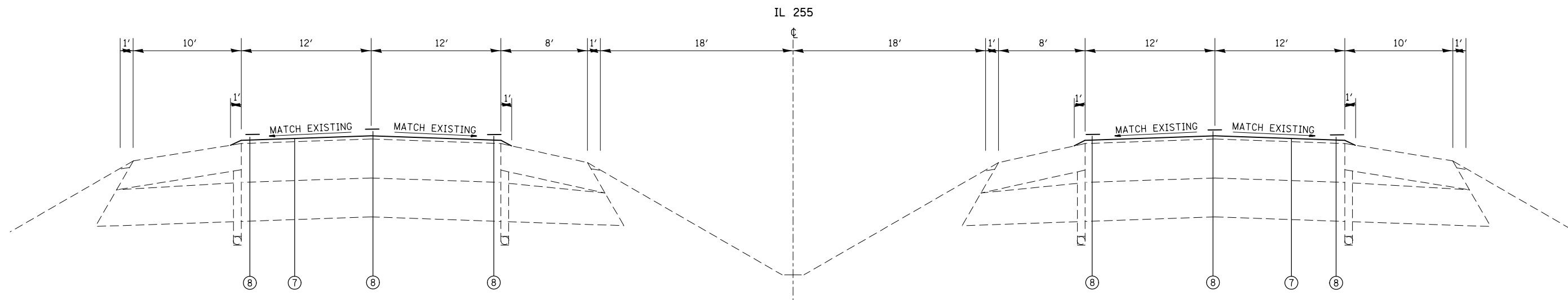


RAMP TYPICAL SECTION  
IL 140, FOSTERBURG RD & SEMINARY RD

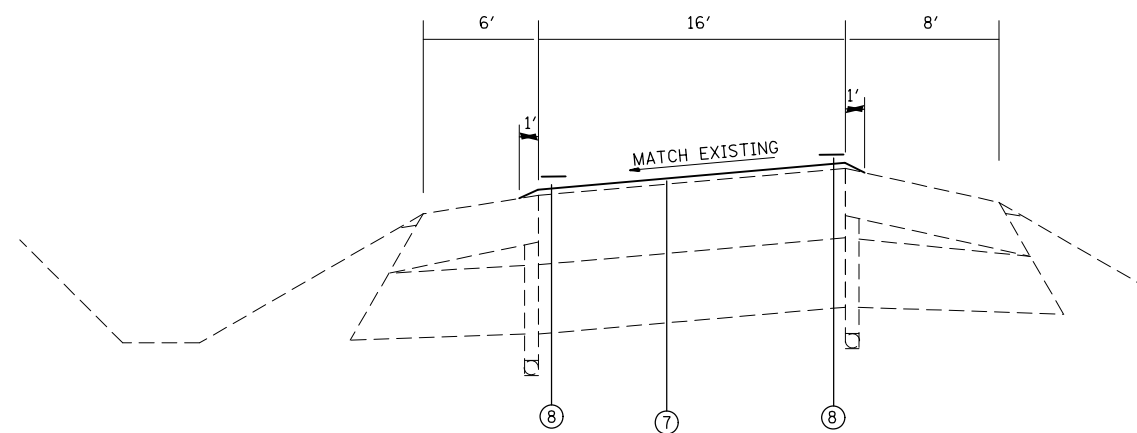
**LEGEND**

- 1 EXISTING BITUMINOUS CONCRETE (FULL DEPTH, SUPERPAVE), 11" TO 15"
- 2 EXISTING LIME MODIFIED SOILS, 12"
- 3 EXISTING BITUMINOUS SHOULDERS, 8"
- 4 EXISTING SUB-BASE GRANULAR MATERIAL, TYPE C
- 5 EXISTING AGGREGATE SHOULDERS, TYPE B
- 6 EXISTING PIPE UNDERDRAINS, 4"
- 7 PROPOSED MICRO-SURFACING, SINGLE PASS, TYPE II, MIX D
- 8 PROPOSED THERMOPLASTIC PAVEMENT MARKING

FILE NAME =	USER NAME = BurnsideEM	DESIGNED -	REVISED -	<b>STATE OF ILLINOIS DEPARTMENT OF TRANSPORTATION</b>	<b>TYPICAL SECTIONS</b>				F.A.P. RTE.	SECTION	COUNTY	TOTAL SHEETS	SHEET NO.
pw:\IL\084EBIDINTEG.illinois.gov\PIWIDOT\Documents\IDOT Offices\District 8\Projects\0876\DRAWING\084EBIDINTEG.dwg	PROJECT DATA = EAD\084EBIDINTEG.dwg	CHECKED -	REVISED -		310	60-13,14IRS	MADISON	11	5				
PLOT SCALE = 100.0000' / 1in.		DATE -	REVISED -		CONTRACT NO. 76G87								
PLOT DATE = 11/30/2015					SCALE:	SHEET	OF	SHEETS	STA.	TO	STA.	ILLINOIS FED. AID PROJECT	



TANGENT TYPICAL SECTION  
MS 0.00 TO MS 6.14



RAMP TYPICAL SECTION  
IL 140, FOSTERBURG RD & SEMINARY RD

**LEGEND**

- 1 EXISTING BITUMINOUS CONCRETE (FULL DEPTH, SUPERPAVE), 11" TO 15"
- 2 EXISTING LIME MODIFIED SOILS, 12"
- 3 EXISTING BITUMINOUS SHOULDERS, 8"
- 4 EXISTING SUB-BASE GRANULAR MATERIAL, TYPE C
- 5 EXISTING AGGREGATE SHOULDERS, TYPE B
- 6 EXISTING PIPE UNDERDRAINS, 4"
- 7 PROPOSED MICRO-SURFACING, SINGLE PASS, TYPE II, MIX D
- 8 PROPOSED THERMOPLASTIC PAVEMENT MARKING

FILE NAME =	USER NAME = BurnsideEM	DESIGNED -	REVISED -	<b>STATE OF ILLINOIS DEPARTMENT OF TRANSPORTATION</b>	<b>TYPICAL SECTIONS</b>			F.A.P. RTE.	SECTION	COUNTY	TOTAL SHEETS	SHEET NO.
pw:\IL\084EBIDINTEG\illinois.gov\PWIDOT\Documents\IDOT Offices\District 8\Projects\0876\DRAWING\EA0\sheets\d876g87-sht-plan.dwg	PLOT SCALE = 100.0000' / 1in.	CHECKED -	REVISED -					310	60-(13,14)RS	MADISON	11	6
PLOT DATE = 11/30/2015	DATE -	REVISED -	REVISED -		SCALE: SHEET OF SHEETS STA. TO STA.			CONTRACT NO. 76G87				
					ILLINOIS FED. AID PROJECT							

MICRO-SURFACING SCHEDULE										
STATION			HOT-MIX ASPHALT PRIME COAT	MICRO-SURFACING SINGLE PASS TYPE II, MIX D	STATION			HOT-MIX ASPHALT PRIME COAT	MICRO-SURFACING SINGLE PASS TYPE II, MIX D	
IL 255 - NORTHBOUND			( POUND)	( SQ YD)	FOSTERBURG ROAD RAMP 1			( SQ YD)	( SQ YD)	
0.00	TO	1.11	2294	16992	0.00	TO	0.12	176	1302	
1.11	TO	1.18	BRIDGE OMISSION			0.12	TO	0.27	210	1552
1.18	TO	3.19	4129	30583	0.27	TO	0.32	95	702	
3.19	TO	3.24	BRIDGE OMISSION			FOSTERBURG ROAD RAMP 2				
3.24	TO	4.52	2646	19601	0.00	TO	0.24	336	2492	
4.52	TO	4.67	BRIDGE OMISSION			0.24	TO	0.31	138	1021
4.67	TO	5.96	2663	19723	0.31	TO	0.47	106	788	
5.96	TO	6.00	BRIDGE OMISSION			FOSTERBURG ROAD RAMP 3				
6.00	TO	6.14	288	2135	0.00	TO	0.21	292	2165	
IL 255 -SOUTHBOUND					0.21	TO	0.44	307	2275	
0.00	TO	1.11	2294	16992	FOSTERBURG ROAD RAMP 4					
1.11	TO	1.18	BRIDGE OMISSION			0.00	TO	0.13	194	1438
1.18	TO	3.19	4129	30583	0.13	TO	0.34	304	2249	
3.19	TO	3.24	BRIDGE OMISSION			SEMINARY ROAD RAMP 1				
3.24	TO	4.52	2646	19601	0.00	TO	0.07	107	791	
4.52	TO	4.67	BRIDGE OMISSION			0.07	TO	0.38	435	3221
4.67	TO	5.96	2663	19723	SEMINARY ROAD RAMP 2					
5.96	TO	6.00	BRIDGE OMISSION			0.00	TO	0.20	288	2133
6.00	TO	6.14	288	2135	0.20	TO	0.45	376	2787	
IL 140 RAMP 1					SEMINARY ROAD RAMP 3					
0.00	TO	0.25	352	2608	0.00	TO	0.16	222	1647	
0.25	TO	0.37	105	774	SEMINARY ROAD RAMP 4					
IL 140 RAMP 2					0.00	TO	0.15	215	1595	
0.00	TO	0.05	85	631						
0.05	TO	0.26	302	2239						
0.26	TO	0.30	98	727						
SUBTOTAL			24981	185047	SUBTOTAL			3801	28158	
TOTAL			28783	213205						

RAISED REFLECTIVE PAVEMENT MARKERS					
LOCATION			ONE WAY CRYSTAL	ONE WAY AMBER	REMOVAL
STA	TO	STA	( EACH)	( EACH)	( EACH)
IL 255 - NORTHBOUND					
0.00	TO	1.11	147		147
1.11	TO	1.18			
1.18	TO	3.19	265		265
3.19	TO	3.24			
3.24	TO	4.52	170		170
4.52	TO	4.67			
4.67	TO	5.96	171		171
6.00	TO	6.14	18		18
IL 255 -SOUTHBOUND					
0.00	TO	1.11	147		147
1.11	TO	1.18			
1.18	TO	3.19	265		265
3.19	TO	3.24			
3.24	TO	4.52	170		170
4.52	TO	4.67			
4.67	TO	5.96	171		171
6.00	TO	6.14	18		18
IL 140 RAMP 1					
0.27	TO	0.29	5		5
IL 140 RAMP 2					
0.00	TO	0.16	70	10	80
FOSTERBURG ROAD RAMP 1					
0.00	TO	0.13	57		57
FOSTERBURG ROAD RAMP 2					
0.29	TO	0.31	7		7
FOSTERBURG ROAD RAMP 3					
0.29	TO	0.34	7		7
FOSTERBURG ROAD RAMP 4					
0.00	TO	0.14	60		60
SEMINARY ROAD RAMP 1					
0.00	TO	0.16	66	13	79
SEMINARY ROAD RAMP 2					
0.29	TO	0.34	8		8
SUBTOTAL:			1819	23	1842
SUBTOTAL:			1842		1842

PARTIAL DEPTH HOT MIX ASPHALT PATCHING					
LOCATION	LANE	PARTIAL DEPTH REMOVAL, TYPE II, 2"	PARTIAL DEPTH REMOVAL, TYPE III, 2"	PARTIAL DEPTH REMOVAL, TYPE IV, 2"	PARTIAL DEPTH PATCHING
		( SQ. YD. )	( SQ. YD. )	( SQ. YD. )	( TON)
IL 255 - NORTHBOUND					
5.27	OUTSIDE		72.2		8.1
IL 255 - SOUTHBOUND					
3.36	OUTSIDE			124.4	13.9
4.86	OUTSIDE	16.0			1.8
SUBTOTAL:		16.0	72.2	124.4	23.8
ANTICIPATED FAILURES ( 15% ):		2.4	10.8	18.7	3.6
TOTAL:		18	83	143	27

BUMP REMOVAL	
LOCATION	( EACH)
IL 255 - SOUTHBOUND	
MS = 3.56	1
TOTAL	1

LONGITUDINAL PARTIAL DEPTH PATCHING							
LOCATION	LANE	LONGITUDINAL PARTIAL DEPTH REMOVAL 2"	LONGITUDINAL PARTIAL DEPTH PATCHING	LOCATION	LANE	LONGITUDINAL PARTIAL DEPTH REMOVAL 2"	LONGITUDINAL PARTIAL DEPTH PATCHING
		( FT )	( TON )			( FT )	( TON )
IL 255 NORTHBOUND				IL 255 SOUTHBOUND			
0.00	AT BRIDGE	13	0.6	0.00	AT BRIDGE	680	0.6
0.15	AT DRAIN	680	0.3	0.26	INSIDE/OUTSIDE EOP	13	10.0
0.4	AT DRAIN	13	0.5	0.36	AT DRAIN	680	0.3
0.42	AT DRAIN	680	0.6	0.45	AT DRAIN	13	0.3
1.11	AT BRIDGE	13	0.6	0.46	AT DRAIN	680	0.3
1.18	AT BRIDGE	680	0.6	0.46	INSIDE/OUTSIDE EOP	13	5.0
3.19	AT BRIDGE	13	0.6	0.86	CL	680	0.2
3.24	AT BRIDGE	680	0.6	1.46	CL	13	0.2
3.24	INSIDE/OUTSIDE EOP	13	0.5	3.05	ACROSS LANE	680	0.3
3.6	INSIDE/OUTSIDE EOP	680	5.0	3.06	GORE	13	49.8
3.61	INSIDE/OUTSIDE EOP	13	5.0	3.19	AT BRIDGE	680	0.6
3.62	INSIDE/OUTSIDE EOP	680	5.0	3.24	AT BRIDGE	13	0.6
3.7	INSIDE/OUTSIDE EOP	13	5.0	3.64	GORE	680	5.0
3.75	INSIDE/OUTSIDE EOP	680	5.0	4.36	INSIDE/OUTSIDE EOP	13	5.0
3.92	INSIDE/OUTSIDE EOP	13	5.0	4.56	INSIDE/OUTSIDE EOP	680	5.0
3.95	INSIDE/OUTSIDE EOP	680	5.0	4.52	AT BRIDGE	13	0.6
4.05	INSIDE/OUTSIDE EOP	13	5.0	4.67	AT BRIDGE	680	0.6
4.2	INSIDE/OUTSIDE EOP	680	7.5	4.71	INSIDE/OUTSIDE EOP	13	5.0
4.33	INSIDE/OUTSIDE EOP	13	5.0	4.75	INSIDE/OUTSIDE EOP	680	5.0
4.45	INSIDE/OUTSIDE EOP	680	5.0	4.76	INSIDE/OUTSIDE EOP	13	5.0
4.5	CL	13	0.1	5.14	INSIDE/OUTSIDE EOP	13	5.0
4.52	AT BRIDGE	680	0.6	5.15	CL	680	0.2
4.67	AT BRIDGE	13	0.6	5.16	CL	13	0.2
4.68	INSIDE/OUTSIDE EOP	680	5.0	5.56	CL	680	0.2
4.75	INSIDE/OUTSIDE EOP	13	5.0	5.66	RAMP JOINT	13	5.0
5.1	INSIDE/OUTSIDE EOP	680	5.0	5.76	GORE	680	5.0
5.15	INSIDE/OUTSIDE EOP	13	5.0	5.86	INSIDE/OUTSIDE EOP	13	5.0
5.2	INSIDE/OUTSIDE EOP	680	5.0	5.96	INSIDE/OUTSIDE EOP	680	5.0
5.25	INSIDE/OUTSIDE EOP	13	5.0	5.96	BRIDGE	13	0.6
5.3	INSIDE/OUTSIDE EOP	680	5.0	FOSTERBURG RD RAMP 1			
5.4	INSIDE/OUTSIDE EOP	13	5.0	0.27	INSIDE/OUTSIDE EOP	13	1.5
5.4	CL	680	29.9	0.3	INSIDE/OUTSIDE EOP	680	5.0
5.65	GORE	13	24.9	FOSTERBURG RD RAMP 3			
5.65	INSIDE/OUTSIDE EOP	680	24.9	0.00	INSIDE/OUTSIDE EOP	680	2.5
5.88	INSIDE/OUTSIDE EOP	13	5.0	SEMINARY RD RAMP 2			
5.94	INSIDE/OUTSIDE EOP	680	5.0	0.00	ACROSS LANE	680	0.4
5.96	AT BRIDGE	13	0.6				
SUBTOTAL:		12487	193.5	SUBTOTAL:		11768	135.0
ANTICIPATED FAILURES ( 15% ):		1873	29.0	ANTICIPATED FAILURES ( 15% ):		1765	20.3
SUBTOTAL WITH FAILURES:		14360	222.5	SUBTOTAL WITH FAILURES:		13533	155.3
TOTAL:		27893	378				



PAVEMENT MARKING SCHEDULE

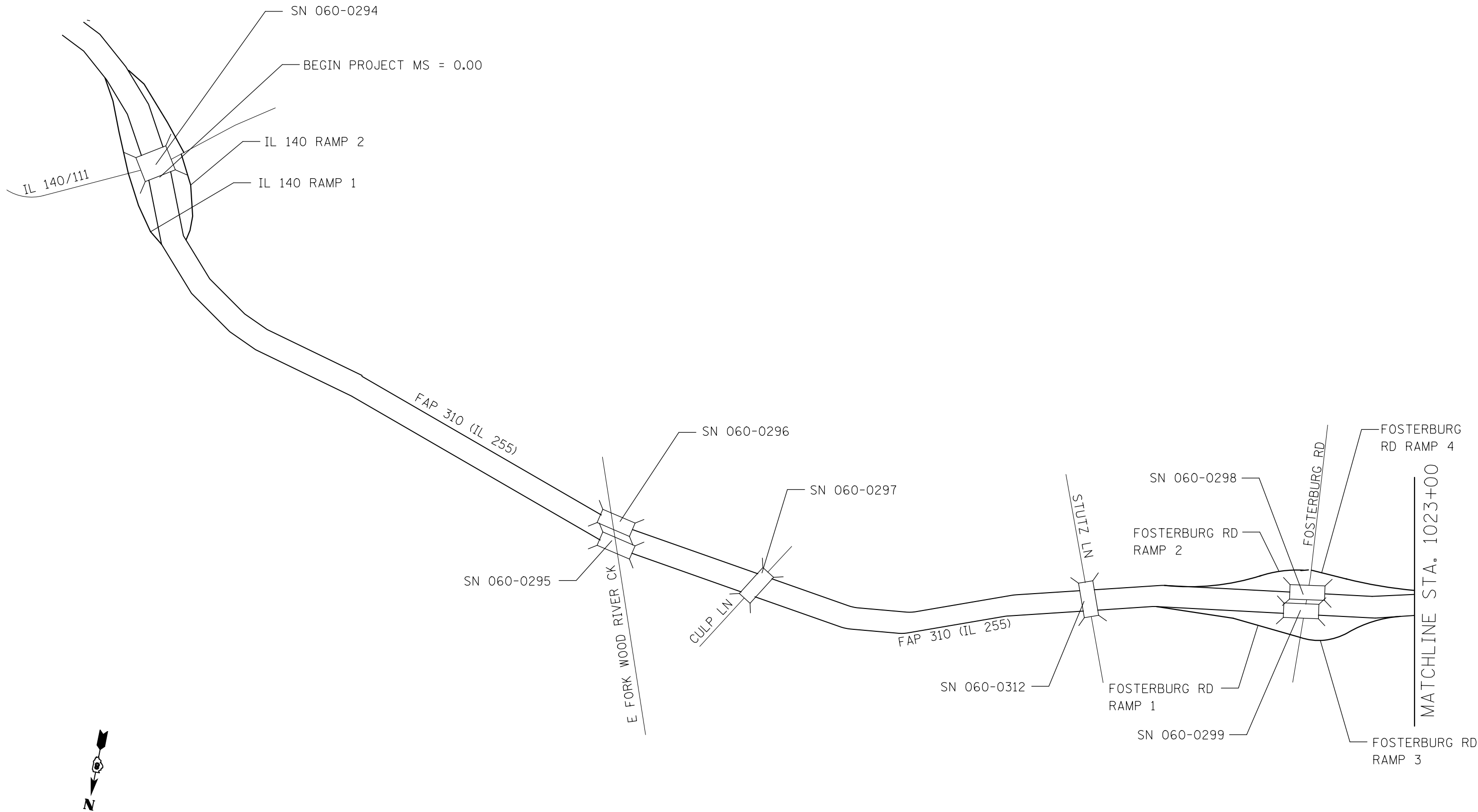
LOCATION			THERMOPLASTIC AND TEMPORARY PAVEMENT MARKING						PAINT PAVEMENT MARKING			PAVEMENT MARKING REMOVAL SQ FT	SHORT-TERM PAVE MARKING WHITE ( 2 LIFTS) FOOT	SHORT-TERM PAVE MARKING YELLOW ( 2 LIFTS) FOOT	WORKZONE PAVE MARKING REMOVAL ( 2 LIFTS) SQ FT								
			4" SOLID ( WHITE) FOOT	4" SOLID ( YELLOW) FOOT	4" SKIP DASH ( WHITE) FOOT	8" SOLID ( WHITE) FOOT	8" SKIP DASH ( WHITE) FOOT	LETTERS/SYMBOLS ( WHITE) SQ FT	4" SOLID ( WHITE) FOOT	4" SOLID ( YELLOW) FOOT	4" SKIP DASH ( WHITE) FOOT												
STA	TO	STA																					
IL 255 - NORTHBOUND																							
0.00	TO	1.11	4627	5882	1470							3953	638	471	739								
1.11	TO	1.18							354	354	88												
1.18	TO	3.19	9856	10586	2647							7620	1270	847	1411								
3.19	TO	3.24							259	259	65												
3.24	TO	4.52	5495	6785	1696							4612	748	543	861								
4.52	TO	4.67							781	781	195												
4.67	TO	5.96	5842	6827	1707							4744	778	546	883								
5.96	TO	6.00							206	206	51												
6.00	TO	6.14	739	739	185							549	93	59	101								
IL 255 -SOUTHBOUND																							
0.00	TO	1.11	5057	5882	1470							4095	672	471	762								
1.11	TO	1.18							354	354	88												
1.18	TO	3.19	9221	10586	2647							7410	1219	847	1377								
3.19	TO	3.24							259	259	65												
3.24	TO	4.52	6095	6785	1696							4810	796	543	893								
4.52	TO	4.67							781	781	195												
4.67	TO	5.96	5501	6827	1707							4631	750	546	864								
5.96	TO	6.00							206	206	51												
6.00	TO	6.14	739	739	185							549	93	59	101								
IL 140 RAMP 1																							
0.00	TO	0.37	1969	1254	28	326						1291	163	100	175								
IL 140 RAMP 2																							
0.00	TO	0.50	2695	1550	20	1650	66	71.1				2628	219	124	229								
FOSTERBURG ROAD RAMP 1																							
0.00	TO	0.32	1711	1027		860	64	24.3				1547	137	82	146								
FOSTERBURG ROAD RAMP 2																							
0.00	TO	0.47	2455	1196	73	850						1798	210	96	204								
FOSTERBURG ROAD RAMP 3																							
0.00	TO	0.44	2323	1032	65	960						1772	198	83	187								
FOSTERBURG ROAD RAMP 4																							
0.00	TO	0.34	1806	1075		880	73	24.3				1613	144	86	154								
SEMINARY ROAD RAMP 1																							
0.00	TO	0.38	1985	1159		900	94	24.3				1728	159	93	168								
SEMINARY ROAD RAMP 2																							
0.00	TO	0.45	2387	1017	75	1000						1818	205	81	191								
SEMINARY ROAD RAMP 3																							
0.00	TO	0.16	824	824								544	66	66	88								
SEMINARY ROAD RAMP 4																							
0.00	TO	0.15	797	797				24.3				551	64	64	85								
SUBTOTAL			72125	72570	15670	7426	296	168	3200	3200	800	58262	8619	5806	9616								
TOTAL			160364			7722			168			7199			58262			14425			9616		

FILE NAME =  
 USER NAME = BurnsdeEM  
 DESIGNED -  
 REVISOR -  
 CHECKED -  
 DATE -  
 PLOT SCALE = 100.0000' / 1in.  
 PLOT DATE = 11/30/2015

STATE OF ILLINOIS  
 DEPARTMENT OF TRANSPORTATION

INDEX OF SHEETS, COMMITMENTS,  
 HIGHWAY STANDARDS AND GENERAL NOTES  
 SCALE: SHEET OF SHEETS STA. TO STA.

F.A.P. RTE.	SECTION	COUNTY	TOTAL SHEETS	SHEET NO.
310	60-13,14RS	MADISON	11	9
CONTRACT NO. 76G87				
ILLINOIS FED. AID PROJECT				



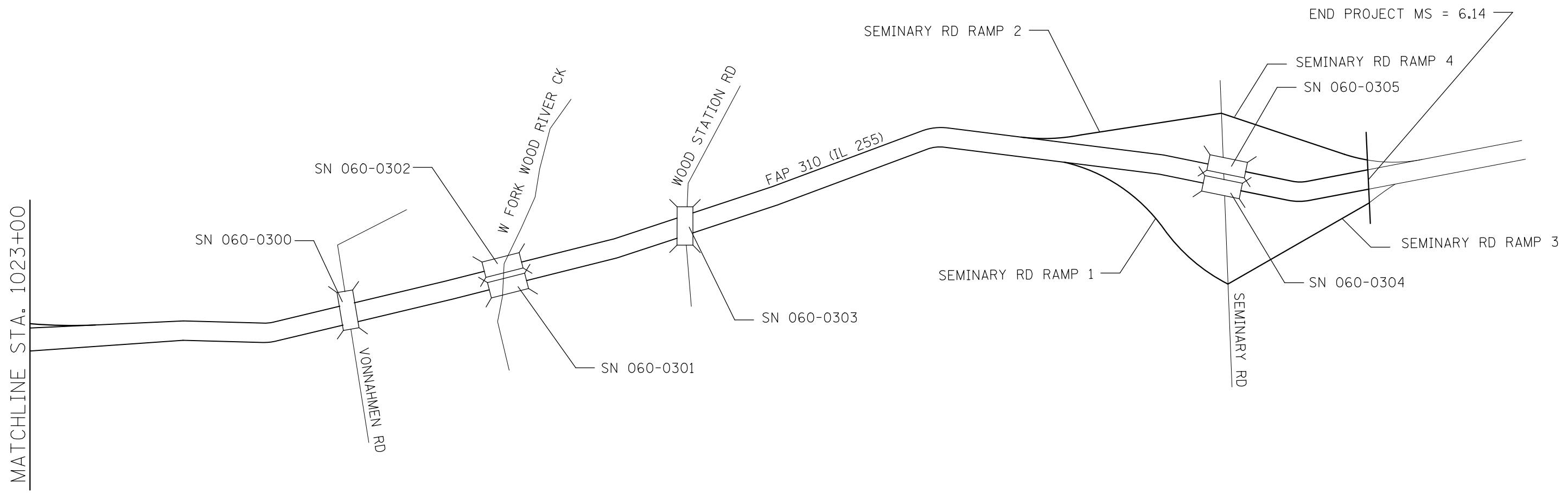
FILE NAME =	USER NAME = BurnsideEM	DESIGNED -	REVISED -
pw:\IL084EBIDINTEG.illinois.gov\PIWIDOT\Documents\DOT Offices\District 8\Projects\0876\DRAWING\DATA\EA0\sheets\d876g87-sht-pln.dwg		CHECKED -	REVISED -
	PLOT SCALE = 100.0000' / 1in.	DATE -	REVISED -
	PLOT DATE = 11/30/2015		

**STATE OF ILLINOIS  
DEPARTMENT OF TRANSPORTATION**

**LOCATION MAP**

SCALE: SHEET OF SHEETS STA. TO STA.

F.A.P. RTE.	SECTION	COUNTY	TOTAL SHEETS	SHEET NO.
310	60-13,14/RS	MADISON	11	10
CONTRACT NO. 76C87			ILLINOIS FED. AID PROJECT	



FILE NAME =	USER NAME = BurnsideEM	DESIGNED -	REVISED -
pw:\IL\084EBIDINTEG\illinois.gov\PWIDOT\Documents\IDOT Offices\District 8\Projects\0876\DRAWING\DATA\EA\Sheets\d876g87-sht-plan.dwg		CHECKED -	REVISED -
		PLOT SCALE = 100.0000' / in.	REVISED -
		PLOT DATE = 11/30/2015	REVISED -

**STATE OF ILLINOIS  
DEPARTMENT OF TRANSPORTATION**

LOCATION MAP			
SCALE:	SHEET	OF SHEETS	STA. TO STA.

F.A.P. RTE.	SECTION	COUNTY	TOTAL SHEETS	SHEET NO.
310	60-(13,14)RS	MADISON	11	11
				<b>CONTRACT NO. 76G87</b>
ILLINOIS FED. AID PROJECT				