

STATE OF ILLINOIS  
DEPARTMENT OF TRANSPORTATION  
DIVISION OF HIGHWAYS

**PROPOSED  
HIGHWAY PLANS**

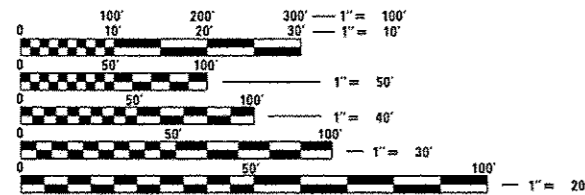
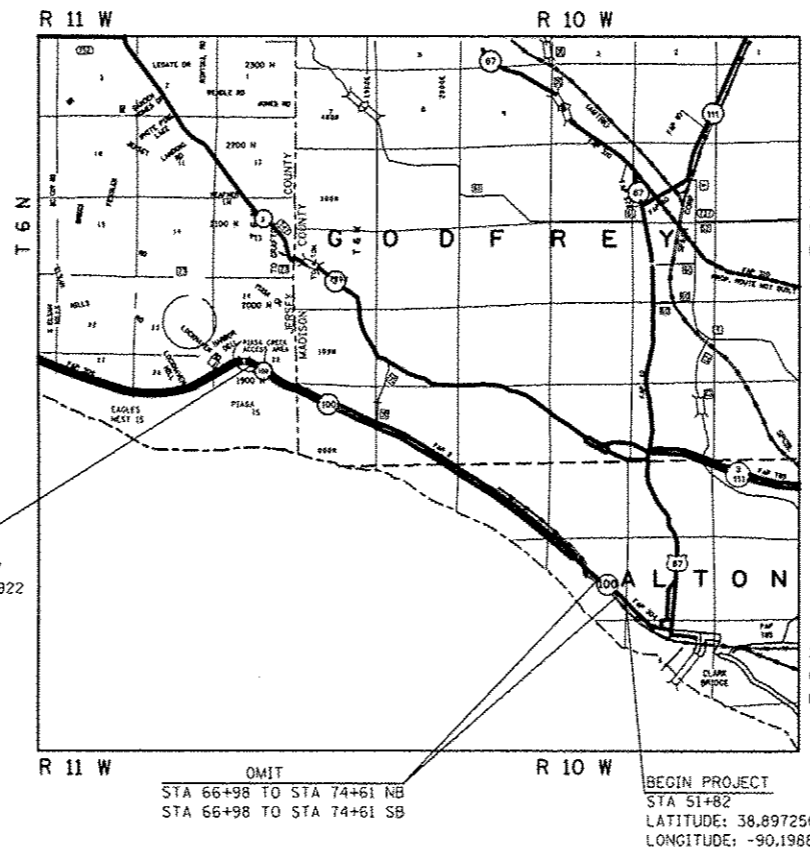
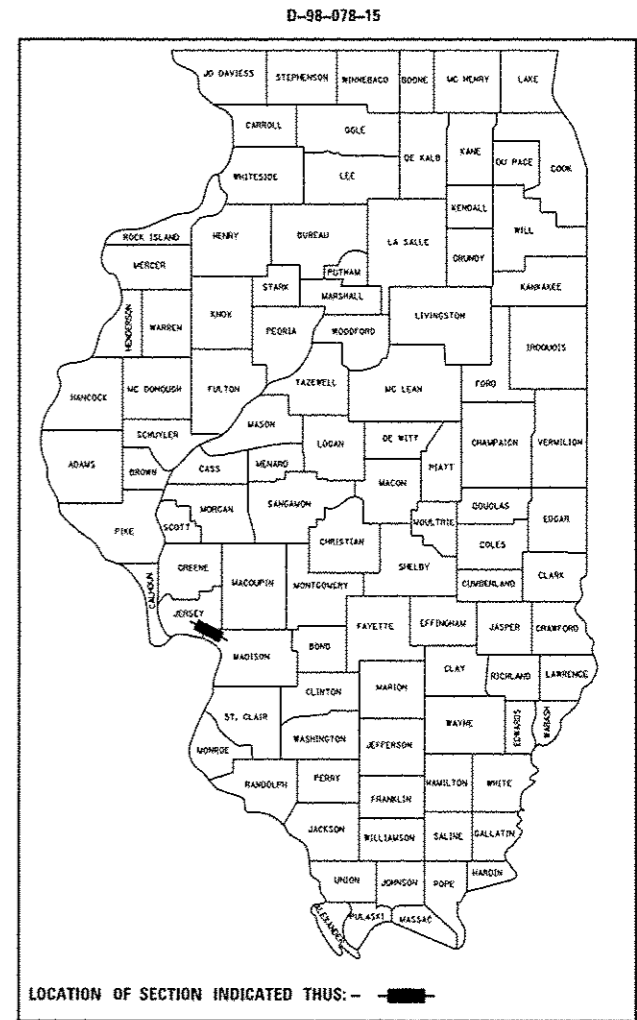
FAP ROUTE 304 (IL 100)  
SECTION (402,403,404,405)-I  
PROJECT ACHSIP-0304 (048)  
RUMBLE STRIP INSTALLATION  
JERSEY AND MADISON COUNTY

C-98-067-15

F.A.P. RTE.	SECTION	COUNTY	TOTAL SHEETS	SHEET NO.
304	(402,403,404,405)-I	*JERSEY/MADISON	8	1
			CONTRACT NO. 76J25	

**INDEX OF SHEETS**

- 1 COVER SHEET
- 2 GENERAL NOTES, TRAFFIC DATA, HIGHWAY STANDARDS AND COMMITMENTS
- 3 SUMMARY OF QUANTITIES
- 4-6 TYPICAL SECTIONS
- 7 PROJECT LOCATION MAP
- 8 SCHEDULE



FULL SIZE PLANS HAVE BEEN PREPARED USING STANDARD ENGINEERING SCALES. REDUCED SIZED PLANS WILL NOT CONFORM TO STANDARD SCALES. IN MAKING MEASUREMENTS ON REDUCED PLANS, THE ABOVE SCALES MAY BE USED.

J.U.L.I.E.  
JOINT UTILITY LOCATION INFORMATION FOR EXCAVATION  
1-800-892-0123  
QR 811

PROJECT ENGINEER: TIM PADGETT (618) 346-3325  
PROJECT MANAGER: JOHNSON DUROSIER (618) 346-3208

CONTRACT NO. 76J25

GROSS LENGTH = 29,424 FT. = 5.573 MILE  
NET LENGTH = 28,661 FT. = 5.428 MILE

STATE OF ILLINOIS  
DEPARTMENT OF TRANSPORTATION  
DIVISION OF HIGHWAYS

SUBMITTED *Dec 10 2015*

*Jeffrey T. K...*  
DEPUTY DIRECTOR OF HIGHWAYS, REGION 5 ENGINEER

*Jan 29 2016*  
*Maween M. Adis, P.E.*  
ENGINEER OF DESIGN AND ENVIRONMENT

*Jan 29 2016*  
*Omer Osman, P.E.*  
DIRECTOR OF HIGHWAYS, CHIEF ENGINEER

**PRINTED BY THE AUTHORITY  
OF THE STATE OF ILLINOIS**

# GENERAL NOTES

1. THE CONTRACTOR SHALL VERIFY ALL DIMENSIONS AND CONDITIONS IN THE FIELD PRIOR TO CONSTRUCTION AND ORDERING OF MATERIALS.
2. ILLINOIS STATE LAW REQUIRES A 48-HOUR NOTICE BE GIVEN TO ALL UTILITIES BEFORE DIGGING. FIELD MARKING OF FACILITIES MAY BE OBTAINED BY CONTACTING J.U.L.I.E. OR FOR NON-MEMBERS, THE UTILITY COMPANY DIRECTLY. AGENCIES KNOWN TO HAVE FACILITIES WITHIN THE PROJECT AREA ARE AS FOLLOWS:

UTILITY	ABOVE GROUND	BELOW GROUND
• AMEREN ILLINOIS	X	X
• AT&T ILLINOIS	X	X
• CHARTER COMMUNICATIONS, INC.	X	X
• VILLAGE OF GODFREY		X
• ILLINOIS AMERICAN WATER COMPANY		X

MEMBERS OF J.U.L.I.E. CALL TOLL FREE (800)-892-0123 OR 811 AND ARE INDICATED BY

- NON-MEMBERS MUST BE NOTIFIED INDIVIDUALLY.
3. THE ILLINOIS DEPARTMENT OF TRANSPORTATION STRONGLY ENCOURAGES THE PRIME CONTRACTOR AND THEIR APPROVED SUB-CONTRACTORS TO HIRE MINORITY, WOMEN AND DISADVANTAGED INDIVIDUALS FROM ITS FEDERALLY FUNDED HIGHWAY CONSTRUCTION CAREERS TRAINING PROGRAM (HCCTP) TO HELP MEET WORK FORCE AND TRAINEE GOALS. THIS PROGRAM IS TRAINING MINORITIES, WOMEN AND DISADVANTAGED INDIVIDUALS IN HIGHWAY CONSTRUCTION RELATED SKILLS. E.G., MATH FOR THE TRADES, JOB READINESS, TECHNICAL SKILLS COURSE WORK CARPENTRY, CONCRETE FLAT WORK, BLUEPRINT READING, SITE PLANS, SITE WORK, TOOLS USE, ETC.) AND OSHA 10 HOUR CERTIFICATION, TO PREPARE THEM FOR A CAREER IN THE HIGHWAY CONSTRUCTION TRADES. GRADUATES ARE WELL- TRAINED AND READY TO BECOME PRODUCTIVE ENTRY -LEVEL CONSTRUCTION WORKERS. PLEASE CONTACT THE DISTRICT 8 EEO OFFICE AT 618-346-3360 AND/OR THE HCCTP COORDINATOR AT 618-874-6528 TO LEARN MORE ABOUT THE PROGRAM AND FOR ASSISTANCE IN MEETING WORK FORCE AND TRAINEE GOALS.
  4. THE CONTRACTOR SHALL EXERCISE CAUTION AROUND EXISTING PAVEMENT MARKINGS. ANY DAMAGE SHALL BE REPLACED IN KIND AT CONTRACTORS EXPENSE.
  5. ALL TURF AREAS DISTURBED BY THE CONTRACTOR SHALL BE SEEDED WITH THE APPROPRIATE EROSION CONTROL, AS DIRECTED BY THE ENGINEER, AT THE CONTRACTOR'S EXPENSE.
  6. NO OVERNIGHT LANE CLOSURES WILL BE PERMITTED.
  7. A "RIGHT LANE CLOSED AHEAD" SIGN SHALL BE ADDED TO HIGHWAY STANDARD 701426-08 AND PLACED ON THE SHOULDER AHEAD OF THE FIRST TRUCK MOUNTED ATTENUATOR. THERE SHALL BE NO EXTRA COST ADDED FOR THIS SIGN.
  8. RUMBLE STRIP INSTALLATION SHALL BE OMITTED AT BIKE TRAILS AND PEDESTRIAN AREAS.

TRAFFIC DATA

HAZELNUT LANE TO STANKA LANE  
 2013 ADT= 5,900 (ACTUAL)  
 2016 ADT= 6,100 (ESTIMATED)  
 2036 ADT= 7,400 (ESTIMATED)  
 SU= 1.7%  
 MU= 2.0%

STANKA LANE TO CLIFTON TERRACE  
 2013 ADT= 5,600 (ACTUAL)  
 2016 ADT= 5,800 (ESTIMATED)  
 2036 ADT= 7,100 (ESTIMATED)  
 SU= 2.1%  
 MU= 2.3%

CLIFTON TERRACE TO IROQUOIS TRAIL  
 2013 ADT= 7,400 (ACTUAL)  
 2016 ADT= 7,600 (ESTIMATED)  
 2036 ADT= 9,300 (ESTIMATED)  
 SU= 2.2%  
 MU= 1.5%

IROQUOIS TRAIL TO STATE STREET  
 2013 ADT= 8,050 (ACTUAL)  
 2016 ADT= 8,300 (ESTIMATED)  
 2036 ADT= 10,100 (ESTIMATED)  
 SU= 1.8%  
 MU= 1.6%

COMMITMENTS

NONE

HIGHWAY STANDARDS

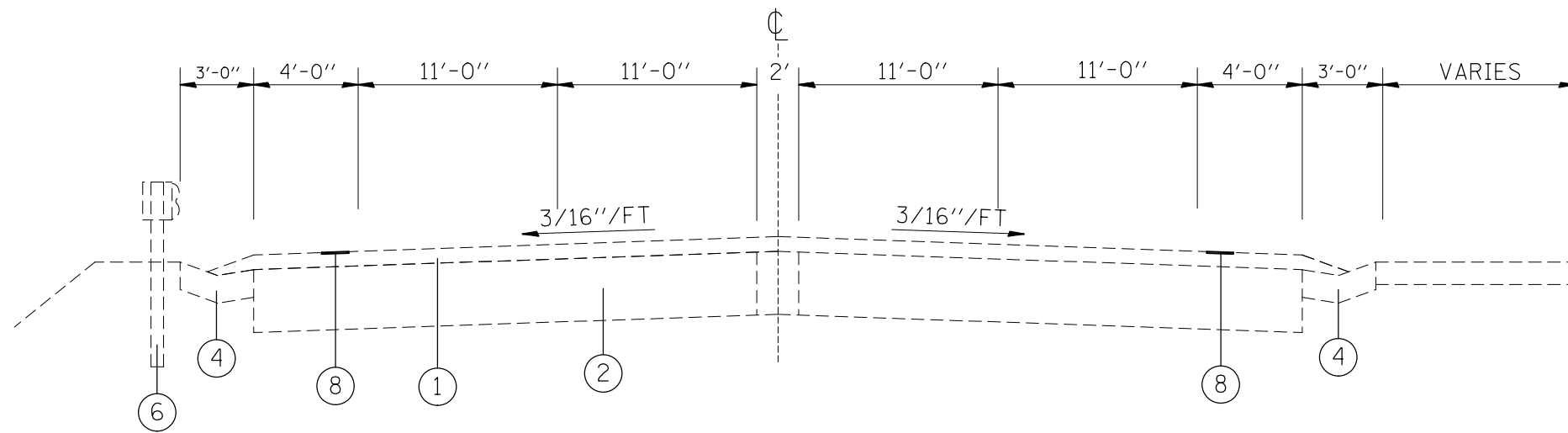
- 000001-06 STANDARD SYMBOLS, ABBREVIATIONS AND PATTERNS
- 001006 DECIMAL OF AN INCH AND OF A FOOT
- 642006 SHOULDER RUMBLE STRIPS, 8 INCH
- 701426-01 LANE CLOSURE, MULTILANE, INTERMITTENT OR MOVING OPERATIONS FOR SPEEDS  $\geq$  45 MPH
- 701901-04 TRAFFIC CONTROL DEVICES

FILE NAME =	USER NAME = DuroanJ	DESIGNED -	REVISED -	<b>STATE OF ILLINOIS DEPARTMENT OF TRANSPORTATION</b>	GENERAL NOTES, HIGHWAY STANDARDS, COMMITMENTS & TRAFFIC DATA		F.A.P. RTE.	SECTION	COUNTY	TOTAL SHEETS	SHEET NO.
psd\11.884EBID\INTED\Illinois.gov\PVIDOT\Documents\IDOT\Office\District 8\Projects\087-037\Hwy80\Sheet\087037-007-001-01.dwg						304	(402,403,404,405)-I	*	8	2	
		CHECKED -	REVISED -		SCALE:		* JERSEY AND MADISON	CONTRACT NO. T6J25			
					SHEET NO. 1 OF 1 SHEETS	STA.					
		DATE -	REVISED -			TO STA.	FED. ROAD DIST. NO.	ILLINOIS FED. AID PROJECT			

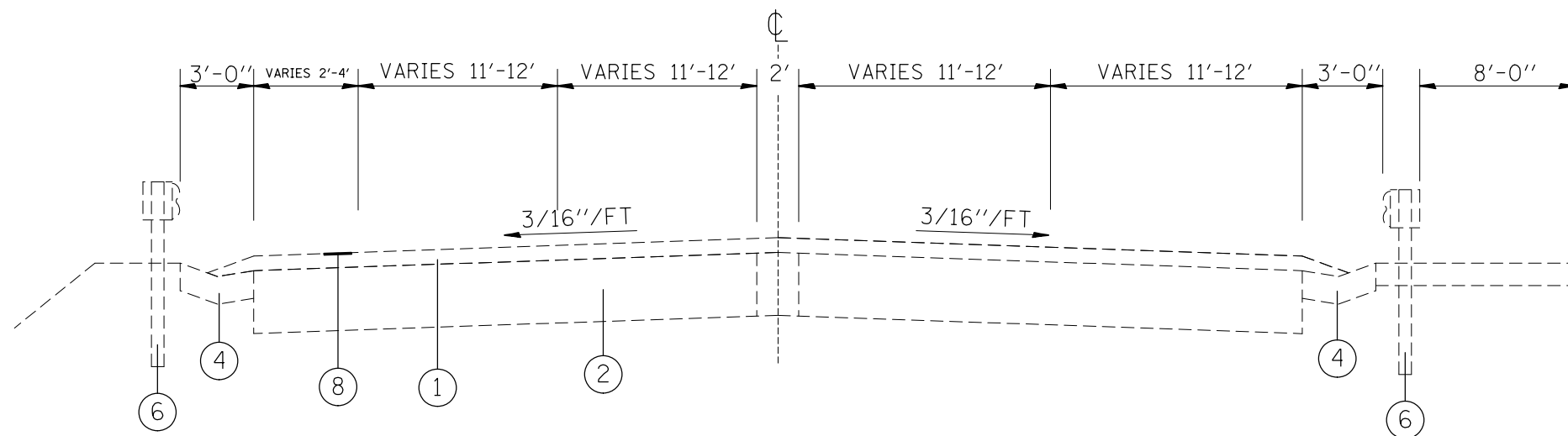
CODE NO.	ITEM	UNIT	TOTAL QUANTITY	CONSTRUCTION CODE	
				90% FED / 10% STATE	
				ROADWAY	ROADWAY
				0021	0021
				URBAN	URBAN
				MADISON	JERSEY
64200108	SHOULDER RUMBLE STRIPS, 8 INCH	FOOT	51580	43842.8	7737.2
67100100	MOBILIZATION	LSUM	1	0.9	0.1

2

FILE NAME =	USER NAME = DuromanJ	DESIGNED -	REVISED -	<b>STATE OF ILLINOIS DEPARTMENT OF TRANSPORTATION</b>	<b>SUMMARY OF QUANTITIES</b>				F.A.P. RTE.	SECTION	COUNTY	TOTAL SHEETS	SHEET NO.
pe\illinois\DOT\Illinois.gov\FWIDOT\Documents\DOT Office\District 8\Projects\087-02\GISData\GADshasta\087625-shs-plan.dwg		REVISOR -	REVISOR -		304	(402,403,404,405)-1	•	8	3				
PLOT SCALE = 100.0000' / 1" =	CHECKED -	REVISOR -	REVISOR -		* JERSEY AND MADISON		CONTRACT NO. 76J25						
PLOT DATE = 12/18/2013	DATE -	REVISOR -	REVISOR -		SCALE:	SHEET NO. 1 OF 1 SHEETS	STA.	TO STA.	FED. ROAD DIST. NO. ILLINOIS FED. AID PROJECT				



TYPICAL SECTION  
STA. 51+82 TO STA. 55+24

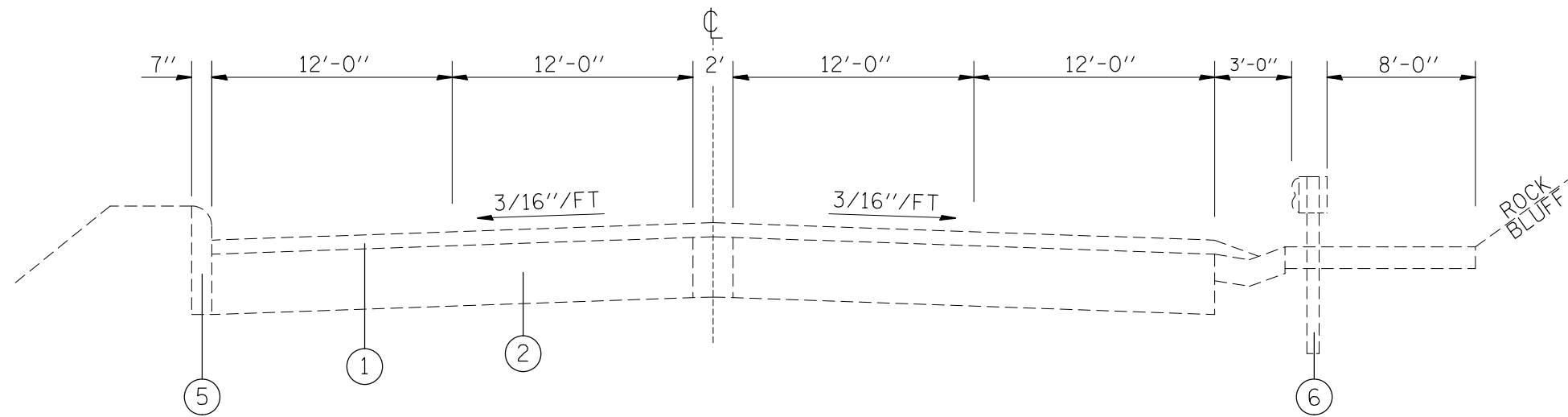


TYPICAL SECTION  
STA. 55+24 TO STA. 66+98

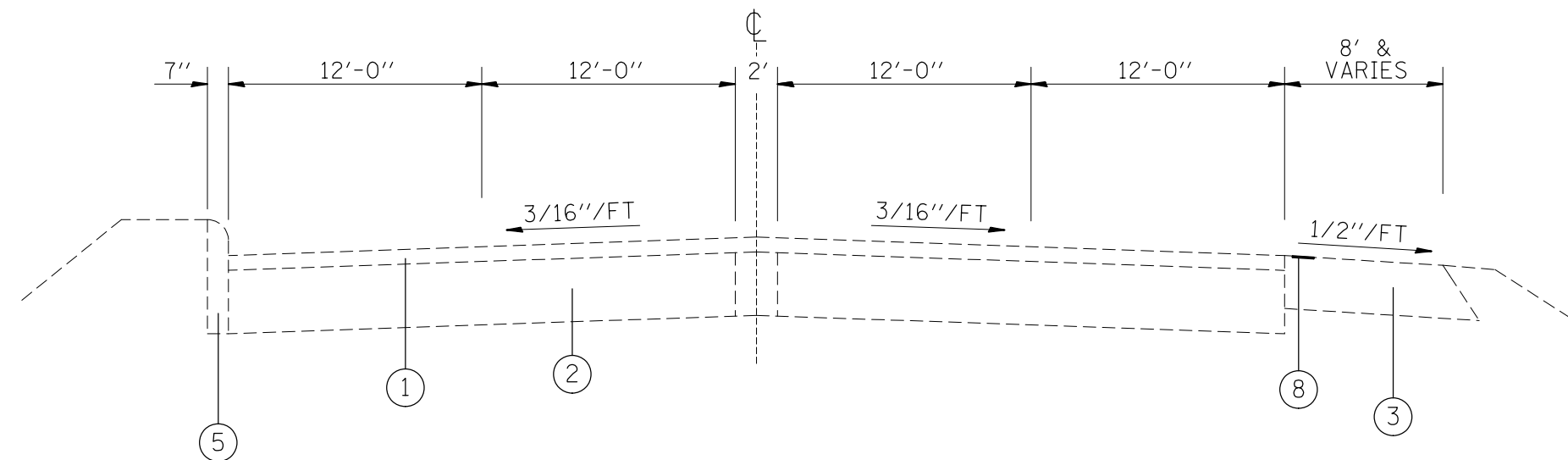
LEGEND

- ① EXISTING HOT-MIX ASPHALT SURFACE COURSE
- ② EXISTING BITUMINOUS PAVEMENT
- ③ EXISTING HOT-MIX ASPHALT SHOULDER
- ④ EXISTING CONCRETE GUTTER, TYPE B
- ⑤ EXISTING COMBINATION CONCRETE CURB AND GUTTER
- ⑥ EXISTING GUARDRAIL
- ⑦ EXISTING STEEL PLATE BEAM GUARDRAIL, TYPE D
- ⑧ PROPOSED RUMBLE STRIP, 8"

FILE NAME =	USER NAME = Ducasser-J	DESIGNED -	REVISED -	<b>STATE OF ILLINOIS DEPARTMENT OF TRANSPORTATION</b>	<b>TYPICAL SECTIONS</b>			F.A.P. RTE.	SECTION	COUNTY	TOTAL SHEETS	SHEET NO.
pw\ill084EBIDINTEG.illinois.gov\PWIDOT\Documents\DOT Offices\District 8\Projects\0876-DRAWING\DATA\EA\Sheets\0876J25-shr-plan.dwg		CHECKED -	REVISED -		304	(402,403,404,405)-I	*	8	4			
		DATE -	REVISED -		* JERSEY AND MADISON			CONTRACT NO. 76J25				
					FED. ROAD DIST. NO.	ILLINOIS	FED. AID PROJECT					
					SCALE:	SHEET NO. 1 OF 1 SHEETS	STA.	TO STA.				



TYPICAL SECTION  
 STA. 66+98 TO STA. 74+61 (SEE NOTE 1)



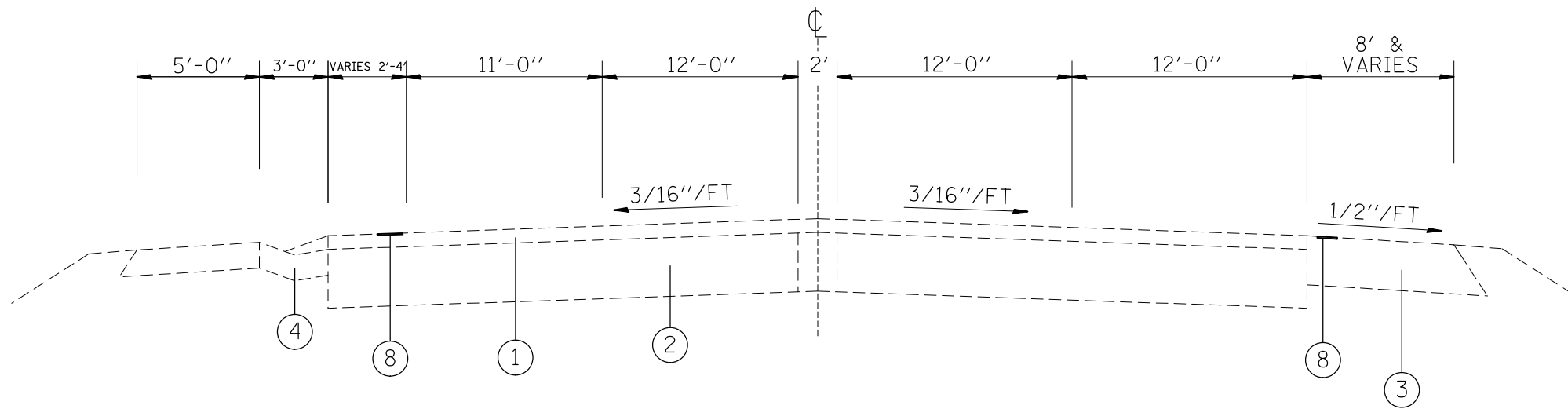
TYPICAL SECTION  
 STA. 74+61 TO STA. 79+03

LEGEND

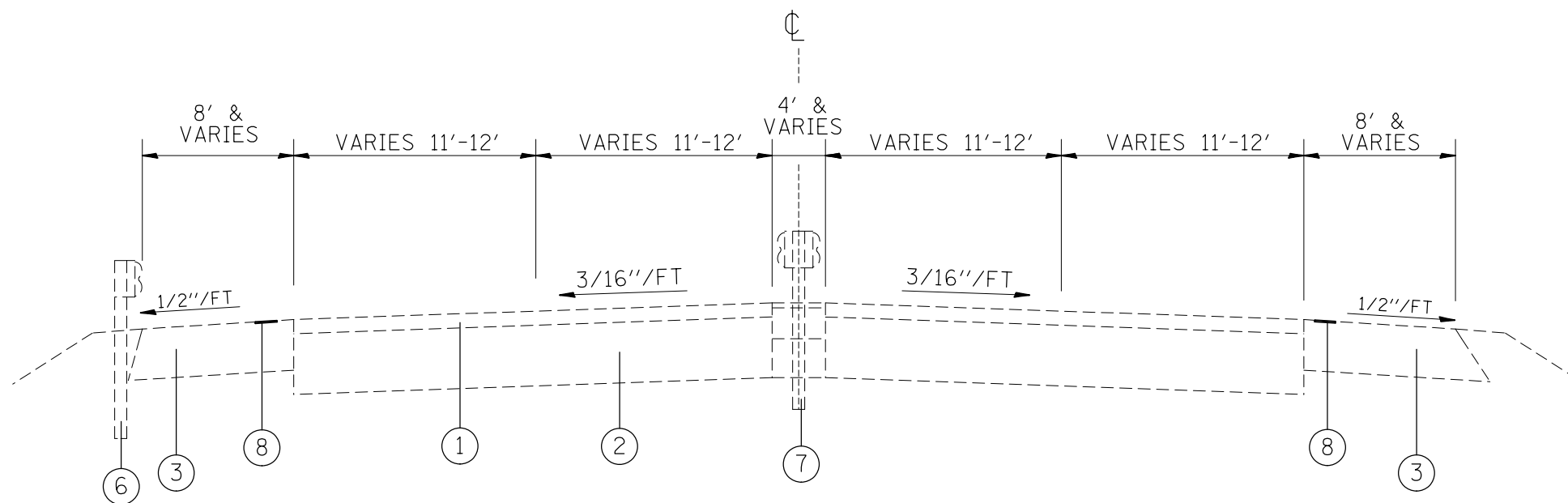
- ① EXISTING HOT-MIX ASPHALT SURFACE COURSE
- ② EXISTING BITUMINOUS PAVEMENT
- ③ EXISTING HOT-MIX ASPHALT SHOULDER
- ④ EXISTING CONCRETE GUTTER, TYPE B
- ⑤ EXISTING COMBINATION CONCRETE CURB AND GUTTER
- ⑥ EXISTING GUARDRAIL
- ⑦ EXISTING STEEL PLATE BEAM GUARDRAIL, TYPE D
- ⑧ PROPOSED RUMBLE STRIP, 8"

NOTE 1: OMIT RUMBLE STIP INSTALLATION FROM STA. 66+98 TO STA. 74+61

FILE NAME =	USER NAME = Duroser-J	DESIGNED -	REVISED -	<b>STATE OF ILLINOIS DEPARTMENT OF TRANSPORTATION</b>	<b>TYPICAL SECTIONS</b>			F.A.P. RTE.	SECTION	COUNTY	TOTAL SHEETS	SHEET NO.	
p:\11\084EBID\INTEG\illinois.gov\PWIDOT\Documents\DOT Offices\District 8\Projects\0876\DRAWING\DATA\EA\Sheets\0876J25-sht-plan.dwg								SCALE:	SHEET NO. 1 OF 1 SHEETS	STA.	TO STA.	304	(402,403,404,405)-I
PLOT SCALE = 1/8" = 100.0000' / 1" / 1" / 1"					CHECKED -	REVISED -	* JERSEY AND MADISON		CONTRACT NO. 76J25				
PLOT DATE = 12/18/2015					DATE -	REVISED -	FED. ROAD DIST. NO.	ILLINOIS	FED. AID PROJECT				



TYPICAL SECTION  
STA. 79+03 TO STA. 85+45

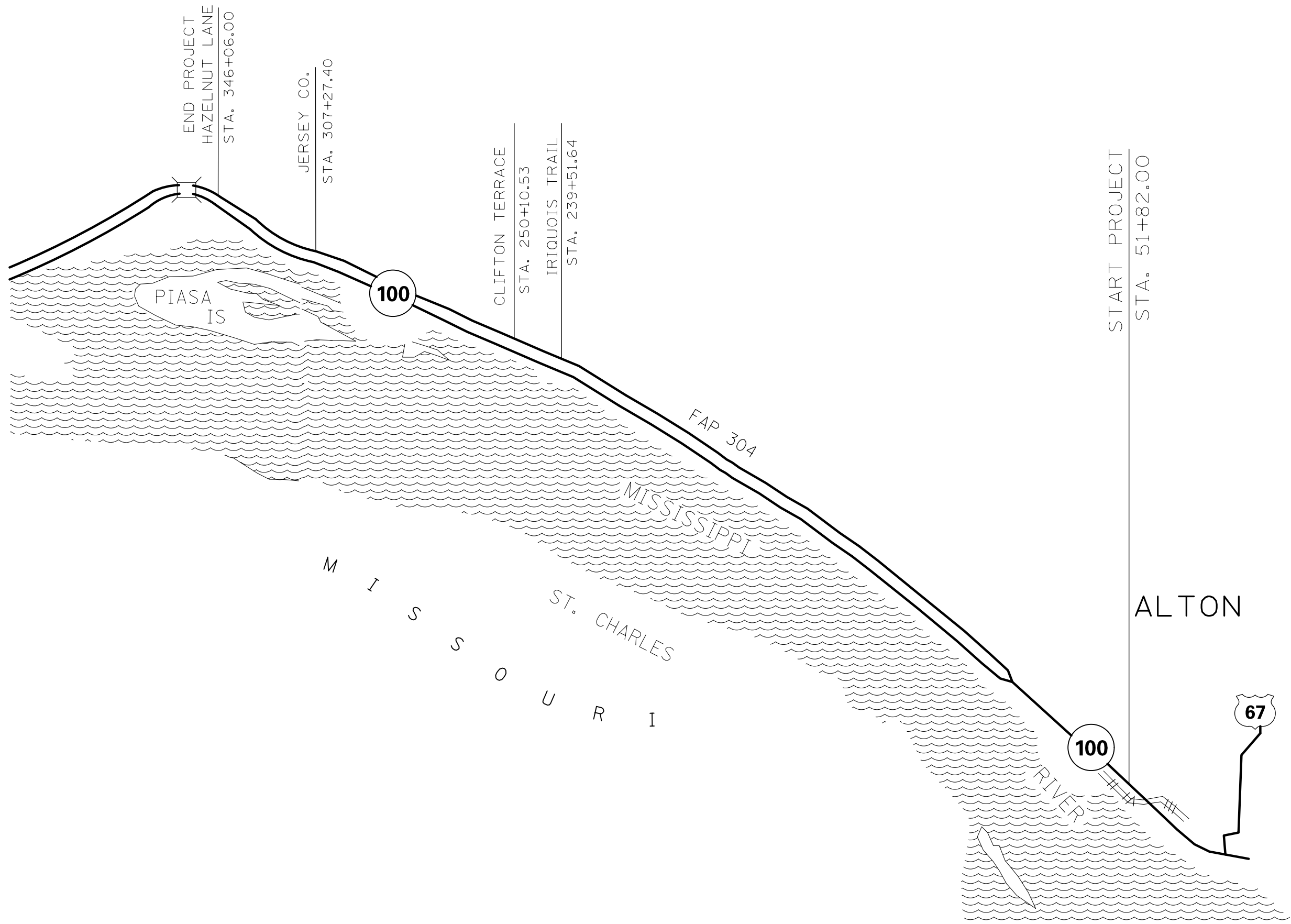


TYPICAL SECTION  
STA. 85+45 TO STA. 346+06

LEGEND

- ① EXISTING HOT-MIX ASPHALT SURFACE COURSE
- ② EXISTING BITUMINOUS PAVEMENT
- ③ EXISTING HOT-MIX ASPHALT SHOULDER
- ④ EXISTING CONCRETE GUTTER, TYPE B
- ⑤ EXISTING COMBINATION CONCRETE CURB AND GUTTER
- ⑥ EXISTING GUARDRAIL
- ⑦ EXISTING STEEL PLATE BEAM GUARDRAIL, TYPE D
- ⑧ PROPOSED RUMBLE STRIP, 8"

FILE NAME =	USER NAME = Duroser-J	DESIGNED -	REVISED -	<b>STATE OF ILLINOIS DEPARTMENT OF TRANSPORTATION</b>	<b>TYPICAL SECTIONS</b>			F.A.P. RTE.	SECTION	COUNTY	TOTAL SHEETS	SHEET NO.
pw\ill084EBIDINTEG\illinois.gov\PWIDOT\Documents\DOT Offices\District 8\Projects\D876J25-eh\Drawings\EA\Sheets\D876J25-eh-plandg		CHECKED -	REVISED -		304	(402,403,404,405)-I	*	8	6			
PLOT SCALE = 1/8" = 1' / 31.75'		DATE -	REVISED -		* JERSEY AND MADISON			CONTRACT NO. 76J25				
PLOT DATE = 12/18/2015					SCALE:	SHEET NO. 1 OF 1 SHEETS	STA.	TO STA.	FED. ROAD DIST. NO.	ILLINOIS FED. AID PROJECT		



(STATIONS DYES LOCATED ON EXISTING PAVEMENT)

FILE NAME =	USER NAME = Durosser-J	DESIGNED -	REVISED -	<b>STATE OF ILLINOIS DEPARTMENT OF TRANSPORTATION</b>	<b>LOCATION MAP</b>			F.A.P. RTE.	SECTION	COUNTY	TOTAL SHEETS	SHEET NO.
pn\ill084EBIDINTEG.illinois.gov\PWIDOT\Documents\DOT Offices\District 8\Projects\0876-DRAWING\DATA\EA\Sheets\0876J25-sht-plan.dwg		DRAWN -	REVISED -		304	(402,403,404,405)-I	*	8	7			
		PLOT SCALE = 100.0000' / in.	CHECKED -		REVISED -	* JERSEY AND MADISON			CONTRACT NO. 76J25			
		PLOT DATE = 12/10/2015	DATE -		REVISED -	SCALE:	SHEET NO. 1 OF 1 SHEETS	STA.	TO STA.	FED. ROAD DIST. NO.	ILLINOIS	FED. AID PROJECT

SHOULDER RUMBLE STRIPS 8 INCH									
IL 100 NORTHBOUND					IL 100 SOUTHBOUND				
STATION	TO	STATION	SHOULDER RUMBLE STRIPS 8 INCH	OMISSIONS	STATION	TO	STATION	SHOULDER RUMBLE STRIPS 8 INCH	OMISSIONS
			( FEET )	( FEET )				( FEET )	( FEET )
51+82	TO	55+24	342	10	51+82	TO	66+98	1516	164
55+24	TO	74+61		1937	66+98	TO	79+03		1205
74+61	TO	346+06	27145	468	79+03	TO	346+06	26703	342
SUBTOTAL:			27487	2415	SUBTOTAL:			28219	1711
			25072					26508	
TOTAL			51580						