

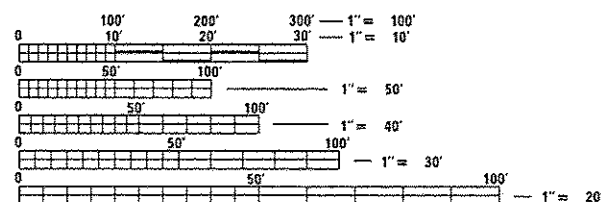
STATE OF ILLINOIS
DEPARTMENT OF TRANSPORTATION
DIVISION OF HIGHWAYS

**PROPOSED
HIGHWAY PLANS**

FAI ROUTE 64 (I-64)
SECTION 95-(5,6)RS-2
MICROSURFACING
WASHINGTON COUNTY
C-98-068-15

FOR INDEX OF SHEETS, SEE SHEET NO. 2

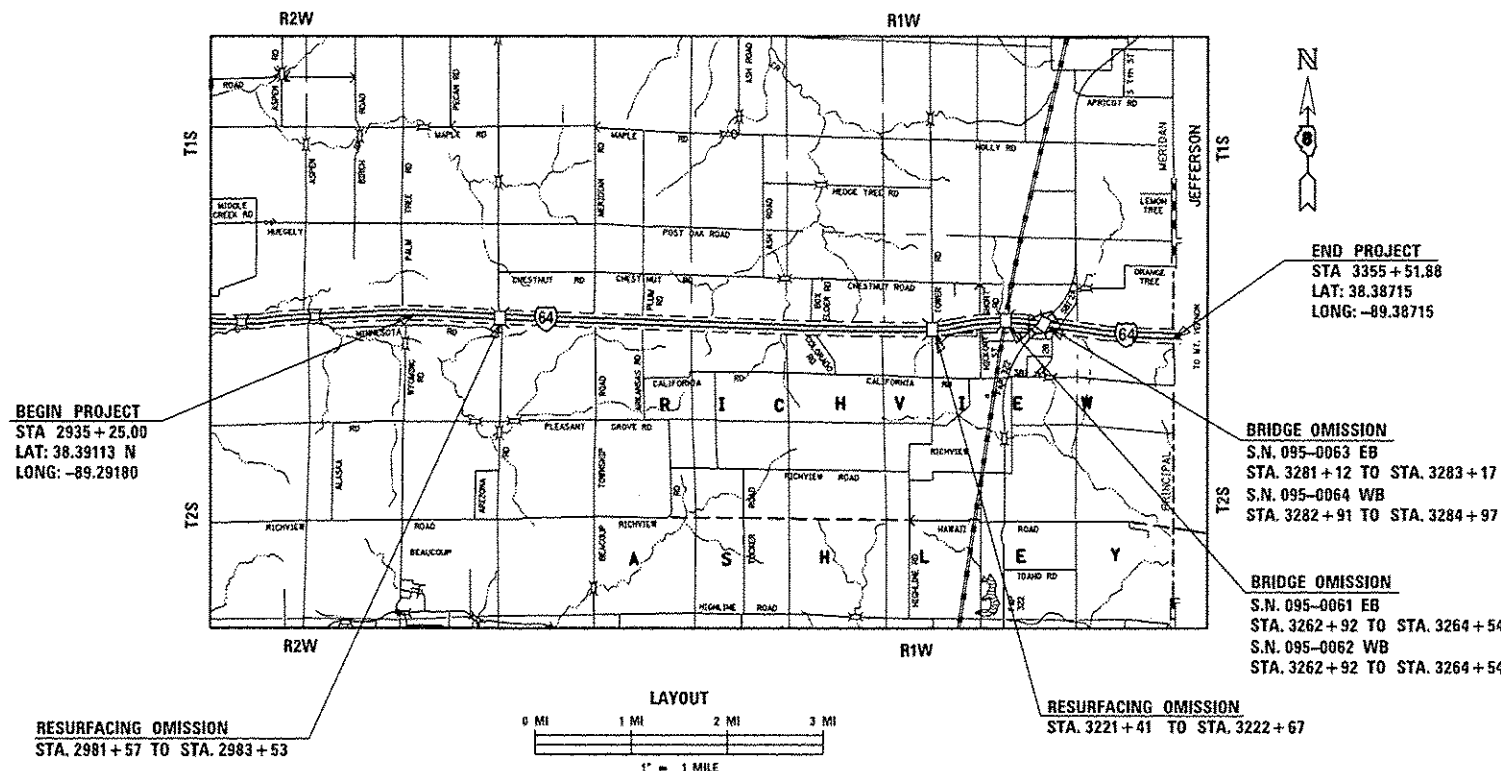
F.A.I. RTE.	SECTION	COUNTY	TOTAL SHEETS	SHEET NO.
64	95-15,6)RS-2	WASHINGTON	8	1
		ILLINOIS	CONTRACT NO. 76J26	



FULL SIZE PLANS HAVE BEEN PREPARED USING STANDARD ENGINEERING SCALES. REDUCED SIZED PLANS WILL NOT CONFORM TO STANDARD SCALES. IN MAKING MEASUREMENTS ON REDUCED PLANS, THE ABOVE SCALES MAY BE USED.

J.U.L.I.E.
JOINT UTILITY LOCATION INFORMATION FOR EXCAVATION
1-800-892-0123
OR 811

PROJECT ENGINEER: HERVE GELIN (618) 346-3179
SQUAD LEADER: BILLIE OWEN (618) 346-3329
CONTRACT NO. 76J26



DESIGN DESIGNATION
INTERSTATE
2014 ADT = 21800 (ACTUAL)
2016 ADT = 22200 (ESTIMATED)
2036 ADT = 27100 (ESTIMATED)
S.U. = 4.8% M.U. = 31.2%

GROSS LENGTH = 42027 FT. = 7.96 MILES
NET LENGTH = 41338 FT. = 7.82 MILES

STATE OF ILLINOIS
DEPARTMENT OF TRANSPORTATION
DIVISION OF HIGHWAYS

SUBMITTED *Dec 18 2015*

Jeffrey E. K...
DEPUTY DIRECTOR OF HIGHWAYS, REGION 5 ENGINEER

Jan 29 2016
Muhammad M. Adoo PE
ENGINEER OF DESIGN AND ENVIRONMENT

Jan 29 2016
Omer Osman PE
DIRECTOR OF HIGHWAYS, CHIEF ENGINEER

**PRINTED BY THE AUTHORITY
OF THE STATE OF ILLINOIS**

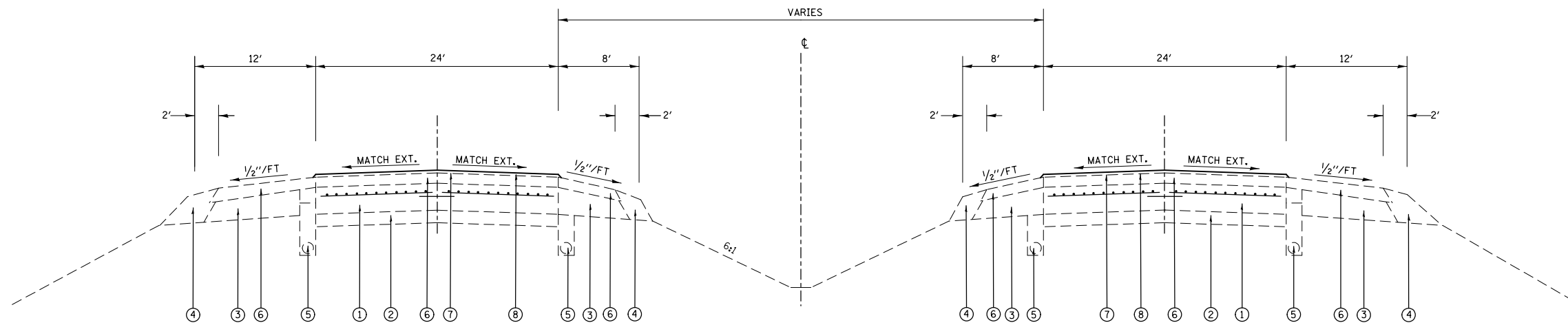
SUMMARY OF QUANTITIES

CODE NO.	ITEM	UNIT	TOTAL QUANTITY	CONSTR. CODE	
				100% STATE	ROADWAY 0005 S. N.
40600275	BITUMINOUS MATERIALS (PRIME COAT)	POUND	32785		32785
40600982	HOT-MIX ASPHALT SURFACE REMOVAL - BUTT JOINT	SQ YD	1894		1894
67000400	ENGINEER'S FIELD OFFICE, TYPE A	CAL MO	8		8
67100100	MOBILIZATION	LSUM	1		1
70100420	TRAFFIC CONTROL AND PROTECTION, STANDARD 701411	EACH	4		4
70100700	TRAFFIC CONTROL AND PROTECTION, STANDARD 701406	LSUM	1		1
70100800	TRAFFIC CONTROL AND PROTECTION, STANDARD 701401	LSUM	1		1
70106800	CHANGEABLE MESSAGE SIGN	CAL MO	18		18
70300100	SHORT TERM PAVEMENT MARKING	FOOT	17043		17043
70300220	TEMPORARY PAVEMENT MARKING - LINE 4"	FOOT	192219		192219
70300250	TEMPORARY PAVEMENT MARKING - LINE 8"	FOOT	2221		2221
70301000	WORK ZONE PAVEMENT MARKING REMOVAL	SO FT	5681		5681
* 78000200	THERMOPLASTIC PAVEMENT MARKING - LINE 4"	FOOT	192219		192219
* 78000500	THERMOPLASTIC PAVEMENT MARKING - LINE 8"	FOOT	2221		2221

CODE NO.	ITEM	UNIT	TOTAL QUANTITY	CONSTR. CODE	
				100% STATE	ROADWAY 0005 S. N.
* 78001110	PAINT PAVEMENT MARKING - LINE 4"	FOOT	2819		2819
* 78100100	RAISED REFLECTIVE PAVEMENT MARKER	EACH	2067		2067
78300100	PAVEMENT MARKING REMOVAL	SO FT	8570		8570
78300200	RAISED REFLECTIVE PAVEMENT MARKER REMOVAL	EACH	2067		2067
X4405020	LONGITUDINAL PARTIAL DEPTH REMOVAL 2"	FOOT	161384		161384
X4420900	LONGITUDINAL PARTIAL DEPTH PATCHING	TON	3976		3976
X4480200	MICRO-SURFACING, 2 PASSES	SO YD	242851		242851
∅ 20076604	TRAINING PROGRAM GRADUATE	HOOR	1000		1000
X7010410	SPEED DISPLAY TRAILER	CAL MO	8		8

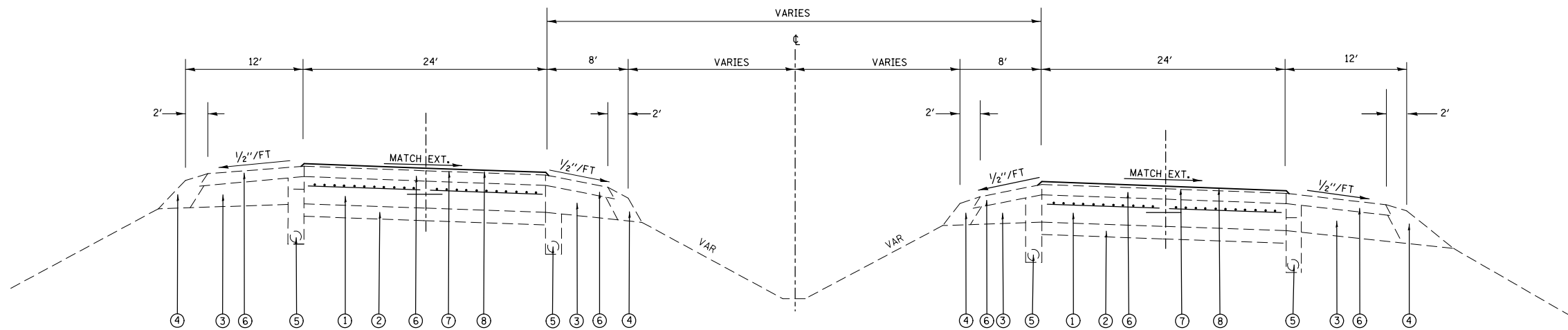
8

* SPECIALTY ITEM
∅ 0042



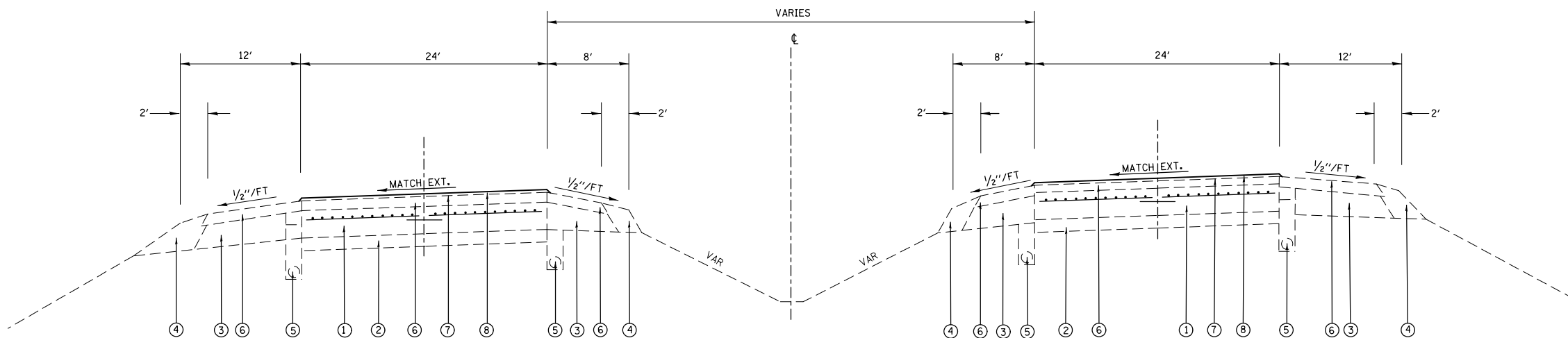
PROPOSED TYPICAL SECTION I-64

STA. 2935+25.00 TO STA. 3206+82.50
 STA. 3233+89.25 TO STA. 3249+91.61
 STA. 3274+69.87 TO STA. 3355+51.84



PROPOSED TYPICAL SECTION I-64

STA. 3249+91.61 TO STA. 3274+69.87



PROPOSED TYPICAL SECTION I-64

STA. 3206+82.56 TO STA. 3233+89.25

LEGEND

- ① EXISTING CONT. REINFORCED P.C.C. PAVEMENT 8"
- ② EXISTING STABILIZED SUB-BASE 4"
- ③ EXISTING STABILIZED SHOULDERS 8"
- ④ EXISTING AGGREGATE SHOULDER
- ⑤ EXISTING PIPE UNDERDRAINS, 4"
- ⑥ EXISTING BITUMINOUS OVERLAY - 3 1/4"
- ⑦ PROPOSED BITUMINOUS MATERIALS (PRIME COAT)
- ⑧ PROPOSED MICRO-SURFACING, 2 PASSES

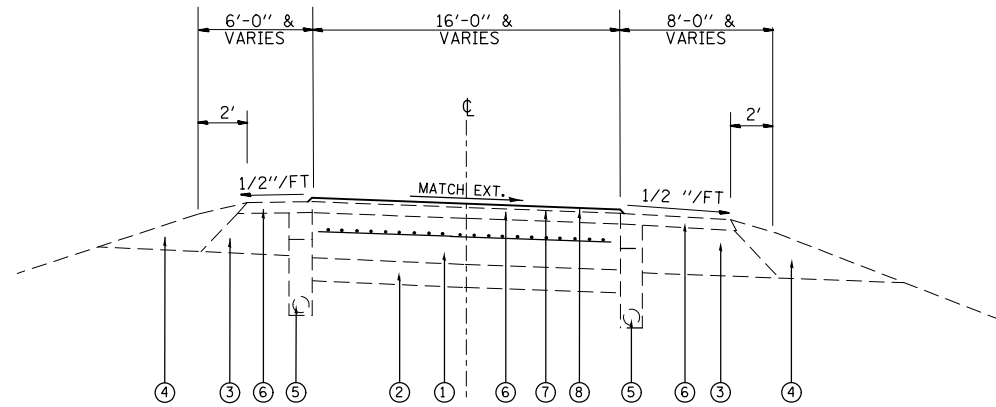
FILE NAME =	USER NAME = DintelmanJN	DESIGNED -	REVISED -
et:\pw_work\pwidot\dintelmanjnl\d0457144\	0876J26-sh1-plan.dgn	DRAWN -	REVISED -
Default	PLOT SCALE = 100.0000' / 1in.	CHECKED -	REVISED -
	PLOT DATE = 12/18/2015	DATE -	REVISED -

STATE OF ILLINOIS
 DEPARTMENT OF TRANSPORTATION

TYPICALS

SCALE: SHEET 1 OF 2 SHEETS STA. TO STA.

F.A.I. RTE.	SECTION	COUNTY	TOTAL SHEETS	SHEET NO.
64	95-(5,6)RS-2	WASHINGTON	8	4
CONTRACT NO. 76J26				
ILLINOIS FED. AID PROJECT				



PROPOSED RAMP TYPICAL SECTIONS (US 51)

RAMP 1 101+40 - 120+00
 RAMP 2 200+00 - 212+10
 RAMP 3 300+00 - 315+60
 RAMP 4 401+61 - 419+76

MIXTURE REQUIREMENT

MIXTURE USE	PARTIAL DEPTH PATCHING
AC/PG	PG 64-22
RAP % (MAX)	SEE SPECIAL PROV
DESIGN AIR VOIDS	4.0% @ $\rho_{des}=90$
MIX COMPOSITION (GRADATION)	IL 9.5
FRICTION AGG	MIXTURE "E"
QUALITY MGMT PROGRAM	QC/QA

PLAN QUANTITIES FOR BITUMINOUS SURFACE COURSE ITEMS ARE CALCULATED USING A UNIT WEIGHT OF 112 LB/SQ YD/IN.

LEGEND

- ① EXISTING CONT. REINFORCED P.C.C. PAVEMENT 8"
- ② EXISTING STABILIZED SUB-BASE 4"
- ③ EXISTING STABILIZED SHOULDERS 8"
- ④ EXISTING AGGREGATE SHOULDER
- ⑤ EXISTING PIPE UNDERDRAINS, 4"
- ⑥ EXISTING BITUMINOUS OVERLAY - 3 1/4"
- ⑦ PROPOSED BITUMINOUS MATERIALS (PRIME COAT)
- ⑧ PROPOSED MICRO-SURFACING, 2 PASSES

MICROSURFACING SCHEDULE

LOCATION			MICRO-SURFACING 2 PASSES, TYPE II MIXTURE E	BITUMINOUS MATERIALS (PRIME COAT)
STA TO STA			EB	EB
			SQ YD	POUNDS
EASTBOUND				
2935+25	TO	2981+57	12866.67	1737.00
2983+53	TO	3206+83	62027.78	8373.75
3206+83	TO	3221+41	4050.00	546.75
3222+67	TO	3233+89	3116.67	420.75
3233+89	TO	3249+92	4452.78	601.13
3249+92	TO	3262+92	3611.11	487.50
3264+54	TO	3274+70	2822.22	381.00
3274+70	TO	3281+12	1783.33	240.75
3283+17	TO	3355+52	20097.22	2713.13
WESTBOUND				
2935+25	TO	2981+57	12866.67	1737.00
2983+53	TO	3206+83	62027.78	8373.75
3206+83	TO	3221+41	4050.00	546.75
3222+67	TO	3233+89	3116.67	420.75
3233+89	TO	3262+92	8063.89	1088.63
3264+54	TO	3274+70	2822.22	381.00
3274+70	TO	3282+91	2280.56	307.88
3284+97	TO	3355+52	19597.22	2645.63
US 51 RAMPS				
101+40	TO	120+00	3539.73	477.86
200+00	TO	212+10	2700.00	364.50
300+00	TO	315+60	3496.67	472.05
401+61	TO	419+76	3461.66	467.32
TOTALS			242851	32785

BUTT-JOINT SCHEDULE

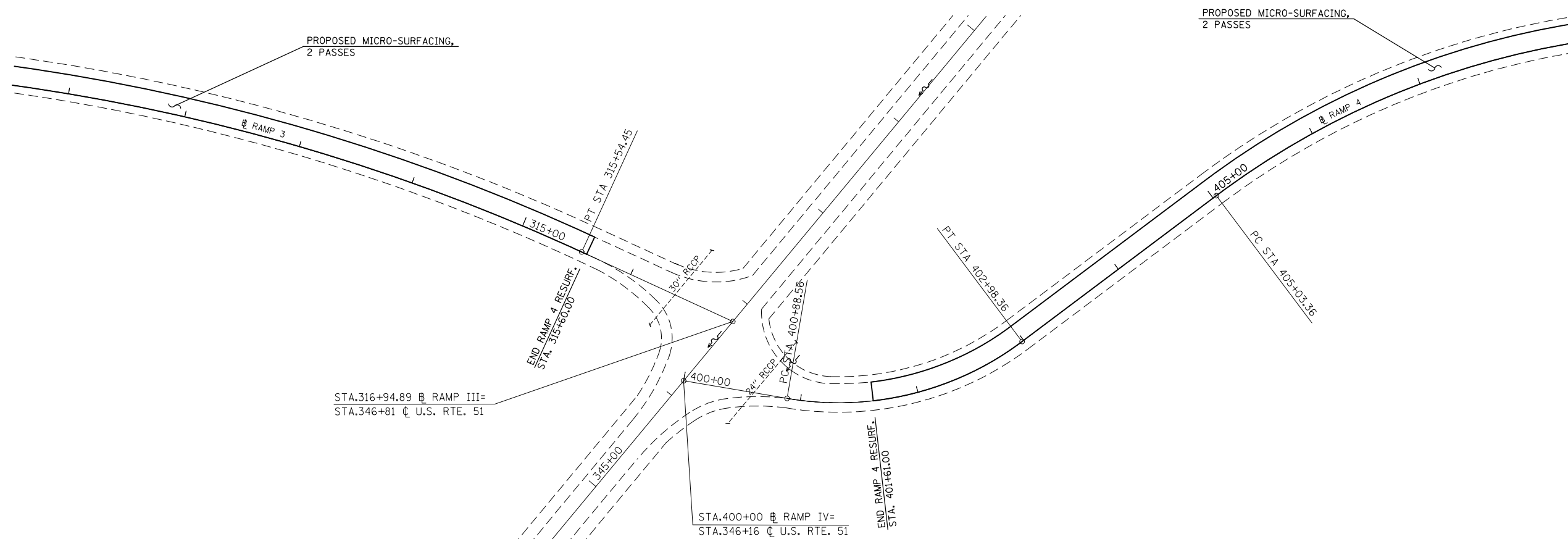
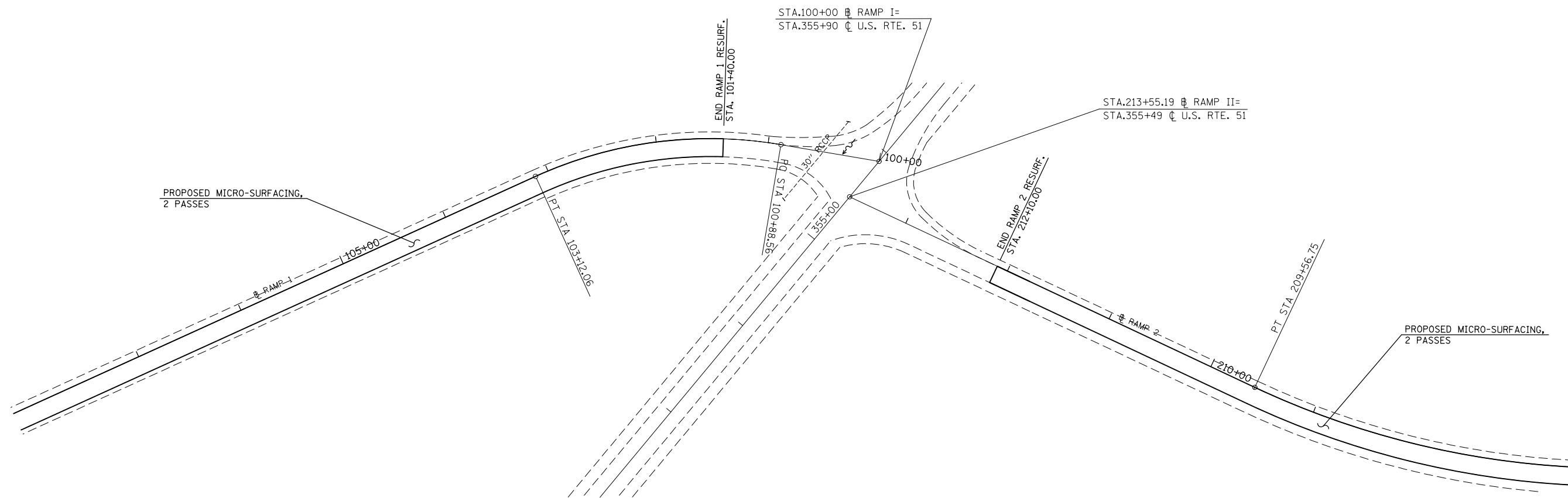
LOCATION			HMA SURFACE REMOVAL-BUTT JOINT
STA TO STA			SQ YD
2935+25	TO	2935+55	166.67
2981+27	TO	2981+57	166.67
2983+53	TO	2983+83	166.67
3221+11	TO	3221+41	166.67
3222+67	TO	3222+97	166.67
3262+62	TO	3262+92	166.67
3264+54	TO	3264+84	166.67
3280+82 (EB)	TO	3281+12 (EB)	83.33
3282+61 (WB)	TO	3282+91 (WB)	83.33
3283+17 (EB)	TO	3283+47 (EB)	83.33
3284+97 (WB)	TO	3285+27 (WB)	83.33
3355+22	TO	3355+52	166.67
US 51 RAMPS			
101+30		101+40	56.67
211+80		212+10	56.67
315+30		315+60	56.67
401+31		401+61	56.67
TOTAL			1894

PAVEMENT MARKING SCHEDULE

LOCATION			THERMOPLASTIC PAVEMENT MARKING 4"			THERMOPLASTIC PAVEMENT MARKING 8"		PAINTPAVEMENT MARKING 4"			PAVEMENT MARKING REMOVAL	RAISED REFLECTIVE PAVEMENT MARKER		SHORT TERM PAVEMENT MARKING	WORK ZONE PAVEMENT MARKING REMOVAL
STA TO STA			SOLID WHITE	SOLID YELLOW	SKIP-DASH	SOLID WHITE	SKIP-DASH	SOLID WHITE	SOLID YELLOW	SKIP-DASH	SQ FT	REMOVAL	NEW	FOOT	SQ FT
			FOOT	FOOT	FOOT	FOOT	FOOT	FOOT	FOOT	FOOT					
EASTBOUND															
2935+25	TO	2981+57	4632	4632	1158						386	116	116	926	309
2981+57	TO	2983+53						196	196	49				39	13
2983+53	TO	3206+83	22330	22330	5583						1861	558	558	4466	1489
3206+83	TO	3221+41	1458	1458	365						122	36	36	292	97
3221+41	TO	3222+67						126	126	32				25	8
3222+67	TO	3233+89	1122	1122	281						94	28	28	224	75
3233+89	TO	3249+92	1603	1603	401						134	40	40	321	107
3249+92	TO	3262+92	1300	1300	325						108	33	33	260	87
3262+92	TO	3264+54						162	162	41				32	11
3264+54	TO	3274+70	1016	1016	254						85	25	25	203	68
3274+70	TO	3281+12	642	642	161						54	16	16	128	43
3281+12	TO	3283+17						205	205	51				41	14
3283+17	TO	3355+52	7235	7235	1809						603	181	181	1447	482
WESTBOUND															
2935+25	TO	2981+57	4632	4632	1158									116	116
2981+57	TO	2983+53						196	196	49				39	13
2983+53	TO	3206+83	22330	22330	5583						1861	558	558	4466	1489
3206+83	TO	3221+41	1458	1458	365						122	36	36	292	97
3222+67	TO	3233+89	1122	1122	281						94	28	28	224	75
3233+89	TO	3262+92	2903	2903	726						242	73	73	581	194
3262+92	TO	3264+54						162	162	41				32	11
3264+54	TO	3274+70	1016	1016	254						85	25	25	203	68
3274+70	TO	3282+91	821	821	205						68	21	21	164	55
3282+91	TO	3284+97						206	206	52				41	14
3284+97	TO	3355+52	7055	7055	1764						588	176	176	1411	470
US 51 RAMPS															
101+40	TO	120+00	875	875		280	48				583			74	25
200+00	TO	212+10	500	500		760					333			48	16
300+00	TO	315+60	900	950		800					617			62	21
401+61	TO	419+76	775	825		300	33				533			73	24
SUB-TOTALS			85725	85825	20669	2140	81	1253	1253	313	8570	2067	2067	17043	5681
TOTALS			192219			2221		2819			8570	2067	2067	17043	5681

PATCHING SCHEDULE

LOCATION	LONGITUDINAL PARTIAL DEPTH REMOVAL, 2"	LONGITUDINAL PARTIAL DEPTH PATCHING, 2"
	FOOT	TON
EASTBOUND		
LANE 1 EOP	40346	994
LANE 2 EOP	40346	994
WESTBOUND		
LANE 1 EOP	40346	994
LANE 2 EOP	40346	994
TOTAL	161384	3976



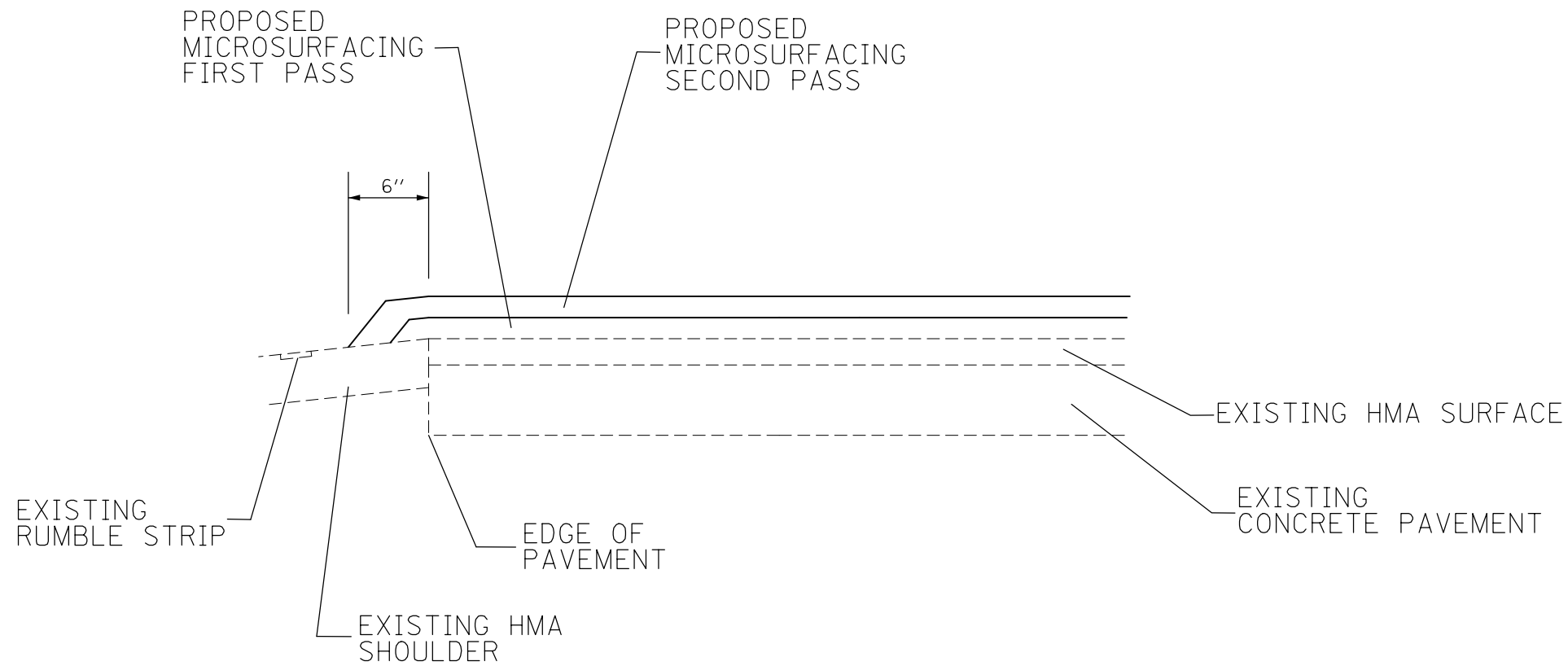
FILE NAME =	USER NAME = DintelmanJN	DESIGNED -	REVISED -
et:\pwork\pwork\pwork\dintelmanj\1\0457144\	0876J26-shr-plan.dgn	DRAWN -	REVISED -
Default	PLOT SCALE = 100.0000' / in.	CHECKED -	REVISED -
	PLOT DATE = 12/18/2015	DATE -	REVISED -

**STATE OF ILLINOIS
DEPARTMENT OF TRANSPORTATION**

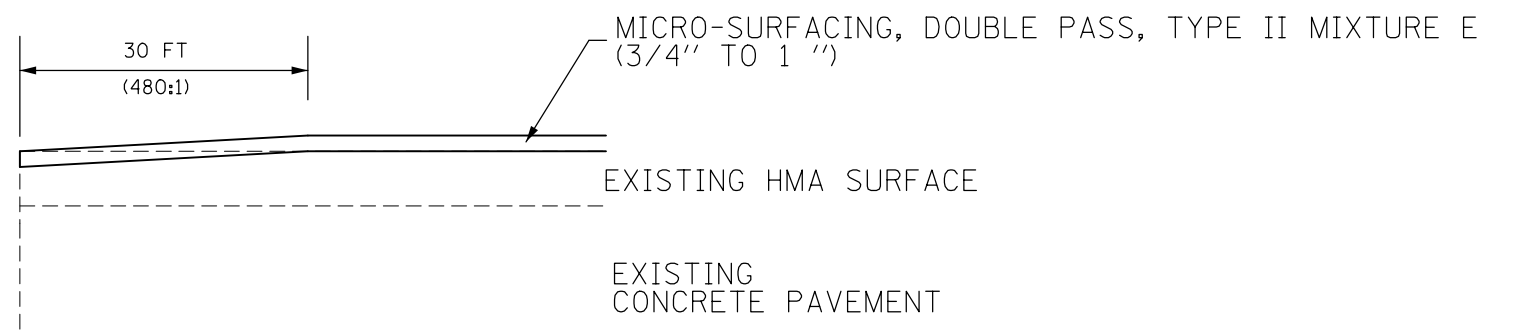
**RAMP RESURFACING
PLAN SHEETS**

SCALE: SHEET 1 OF 1 SHEETS STA. TO STA.

F.A.I. RTE.	SECTION	COUNTY	TOTAL SHEETS	SHEET NO.
64	95-(5,6)RS-2	WASHINGTON	8	7
CONTRACT NO. 76J26				
ILLINOIS FED. AID PROJECT				



TYPICAL MICROSURFACING DETAIL
(N.T.S.)



BUTT JOINT DETAIL
(N.T.S.)

FILE NAME =	USER NAME = DintelmanJN	DESIGNED -	REVISED -
et:\pw\work\p\dot\dintelmanjn\0457144\	0876J26-sh-t-plan.dgn	DRAWN -	REVISED -
Default	PLOT SCALE = 100.0000 ' / in.	CHECKED -	REVISED -
	PLOT DATE = 12/18/2015	DATE -	REVISED -

STATE OF ILLINOIS
DEPARTMENT OF TRANSPORTATION

DETAIL SHEET

SCALE: SHEET OF SHEETS STA. TO STA.

F.A.I. RTE.	SECTION	COUNTY	TOTAL SHEETS	SHEET NO.
64	95-(5,6)RS-2	WASHINGTON	8	8
ILLINOIS FED. AID PROJECT			CONTRACT NO. 76J26	