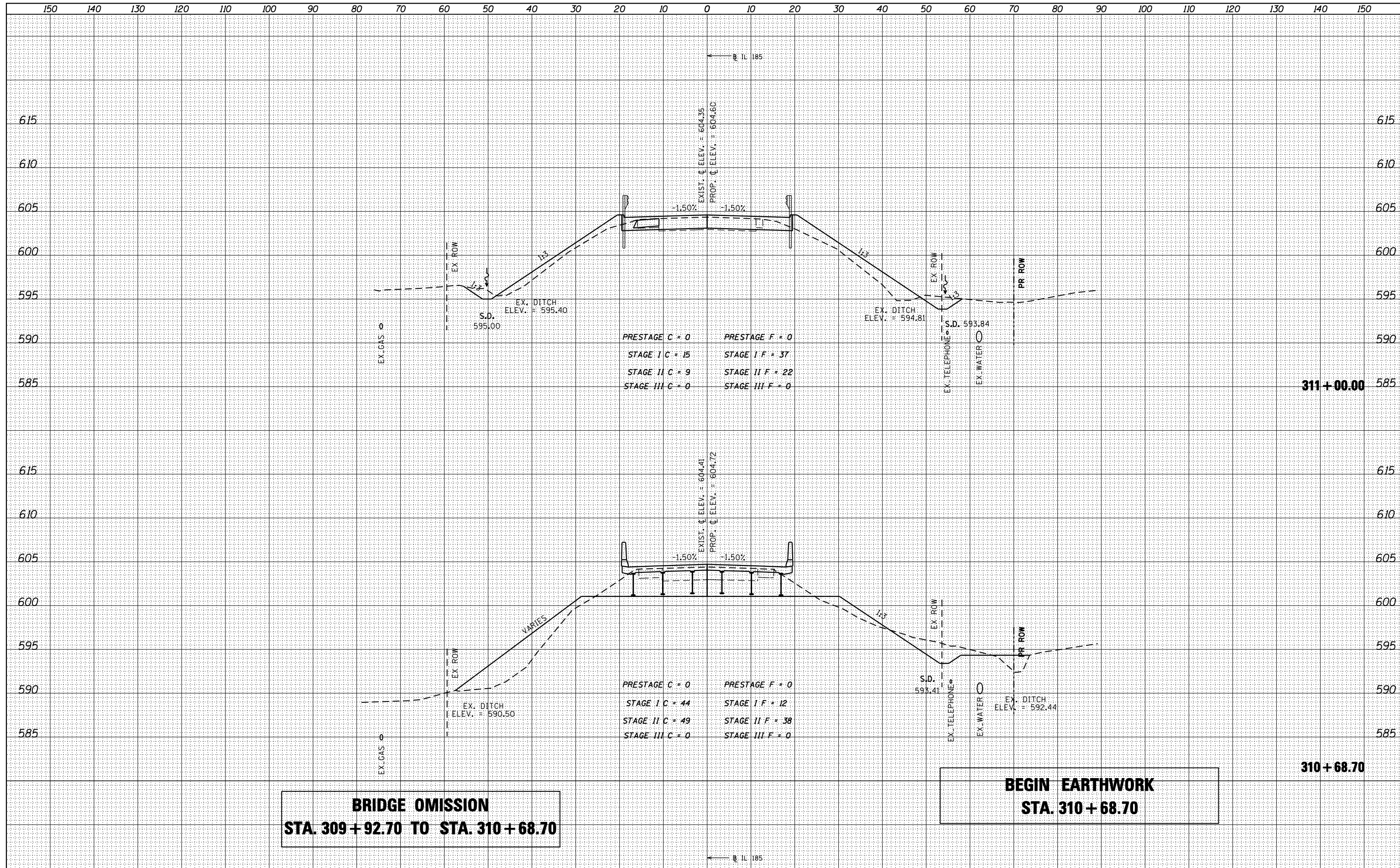


DATE	
BY	
FINAL SURVEY	
SURVEYED	
PLOTTED	
TEMPLATE	
AREAS	
AREAS CHECKED	
NO.	

DATE	
BY	
ORIGINAL SURVEY	
SURVEYED	
PLOTTED	
TEMPLATE	
AREAS	
AREAS CHECKED	
NO.	



**BRIDGE OMISSION  
STA. 309+92.70 TO STA. 310+68.70**

**BEGIN EARTHWORK  
STA. 310+68.70**

design firm  
no. 184001036

engineers • planners • land surveyors

USER NAME = g_jameson	DESIGNED -	REVISED
FILE NAME = D672D08-SN0680026-SHT-CHE CROSS.dgn	REVISED	REVISED
PLOT SCALE = 20.0000' / IN.	DRAWN -	REVISED
PLOT DATE = 10/15/2015	CHECKED -	REVISED

**STATE OF ILLINOIS  
DEPARTMENT OF TRANSPORTATION**

**CROSS SECTIONS  
IL 185 OVER MCDAVID BRANCH**

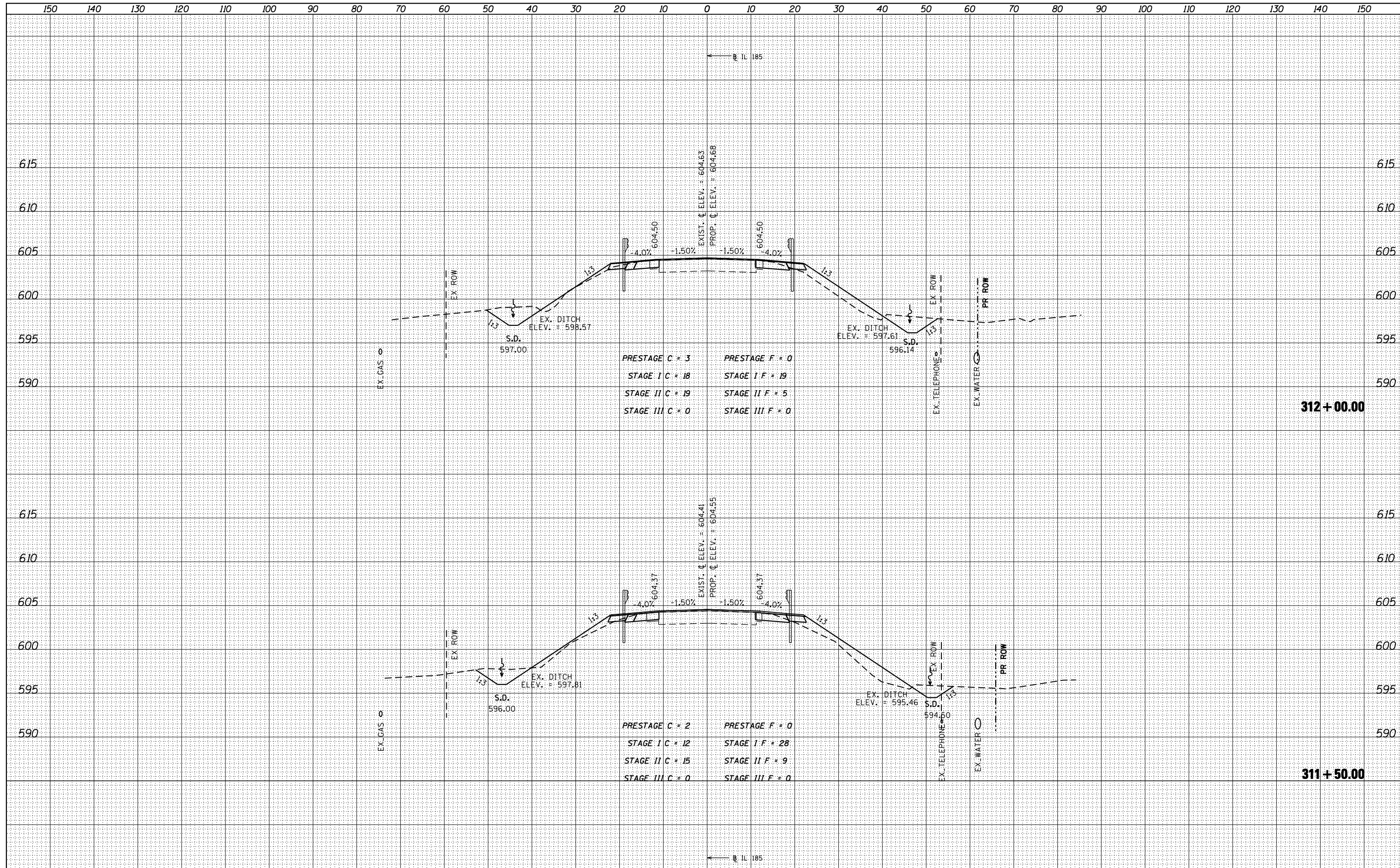
SCALE: 1" = 10' SHEET 5 OF 9 SHEETS STA. 310+67.70 TO STA. 311+00.00

F.A.P. RTE.	SECTION	COUNTY	TOTAL SHEETS	SHEET NO.
777	10B-2, 405B-1	MONTGOMERY	121	101
			CONTRACT NO. 72D08	

ILLINOIS FED. AID PROJECT


DATE	
BY	
SURVEYED	
PLOTTED	
TEMPLATE	
AREAS	
CHECKED	
FINL SURVEY	
NOTE BOOK	
NO.	

DATE	
BY	
SURVEYED	
PLOTTED	
TEMPLATE	
AREAS	
CHECKED	
ORIGINAL SURVEY	
NOTE BOOK	
NO.	



PRESTAGE C = 3      PRESTAGE F = 0  
 STAGE I C = 18      STAGE I F = 19  
 STAGE II C = 19      STAGE II F = 5  
 STAGE III C = 0      STAGE III F = 0

PRESTAGE C = 2      PRESTAGE F = 0  
 STAGE I C = 12      STAGE I F = 28  
 STAGE II C = 15      STAGE II F = 9  
 STAGE III C = 0      STAGE III F = 0

design firm  
 no. 184001036  
  
 engineers • planners • land surveyors

USER NAME = g_jameson	DESIGNED -	REVISED
FILE NAME = D672D08-SN0680026-SHT-CHEKED.dgn	REVISED	REVISED
PLOT SCALE = 20.0000' / IN.	DRAWN -	REVISED
PLOT DATE = 10/15/2015	CHECKED -	REVISED

**STATE OF ILLINOIS**  
**DEPARTMENT OF TRANSPORTATION**

**CROSS SECTIONS**  
**IL 185 OVER MCDAVID BRANCH**

SCALE: 1" = 10'      SHEET 6 OF 9 SHEETS      STA. 311+50.00 TO STA. 312+00.00

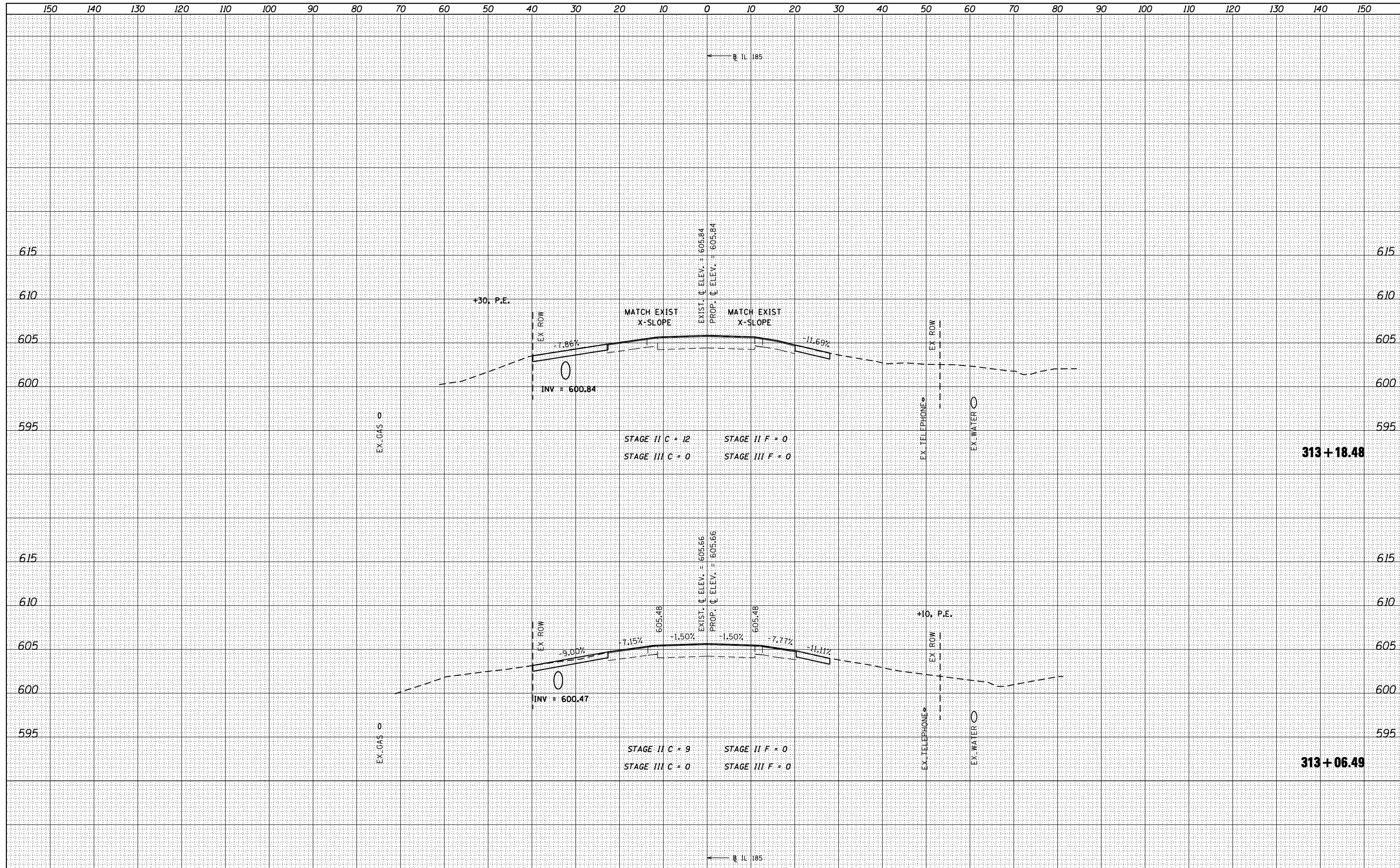
F.A.P. RTE.	SECTION	COUNTY	TOTAL SHEETS	SHEET NO.
777	10B-2, 405B-1	MONTGOMERY	121	102
			CONTRACT NO. 72D08	

ILLINOIS FED. AID PROJECT



DATE	
BY	
FINAL SURVEY	SURVEYED
NOTE BOOK	PLOTTED
NO.	TEMPLATE
	AREAS CHECKED
	AREAS CHECKED

DATE	
BY	
ORIGINAL SURVEY	SURVEYED
NOTE BOOK	PLOTTED
NO.	TEMPLATE
	AREAS CHECKED
	AREAS CHECKED



design firm  
no. 184001036

engineers • planners • land surveyors

USER NAME = gjameson	DESIGNED -	REVISED
FILE NAME = D672D08-SN0680026-SHT-CROSS.dgn	CHECKED -	REVISED
PLOT SCALE = 20.0000' / IN.	DRAWN -	REVISED
PLOT DATE = 10/15/2015	CHECKED -	REVISED

**STATE OF ILLINOIS  
DEPARTMENT OF TRANSPORTATION**

**CROSS SECTIONS  
IL 185 OVER MCDAVID BRANCH**

SCALE: 1" = 10'      SHEET 8 OF 9 SHEETS      STA. 313+06.49 TO STA. 313+18.48

F.A.P. RTE.	SECTION	COUNTY	TOTAL SHEETS	SHEET NO.
777	10B-2, 405B-1	MONTGOMERY	121	104
			CONTRACT NO. 72D08	

ILLINOIS FED. AID PROJECT







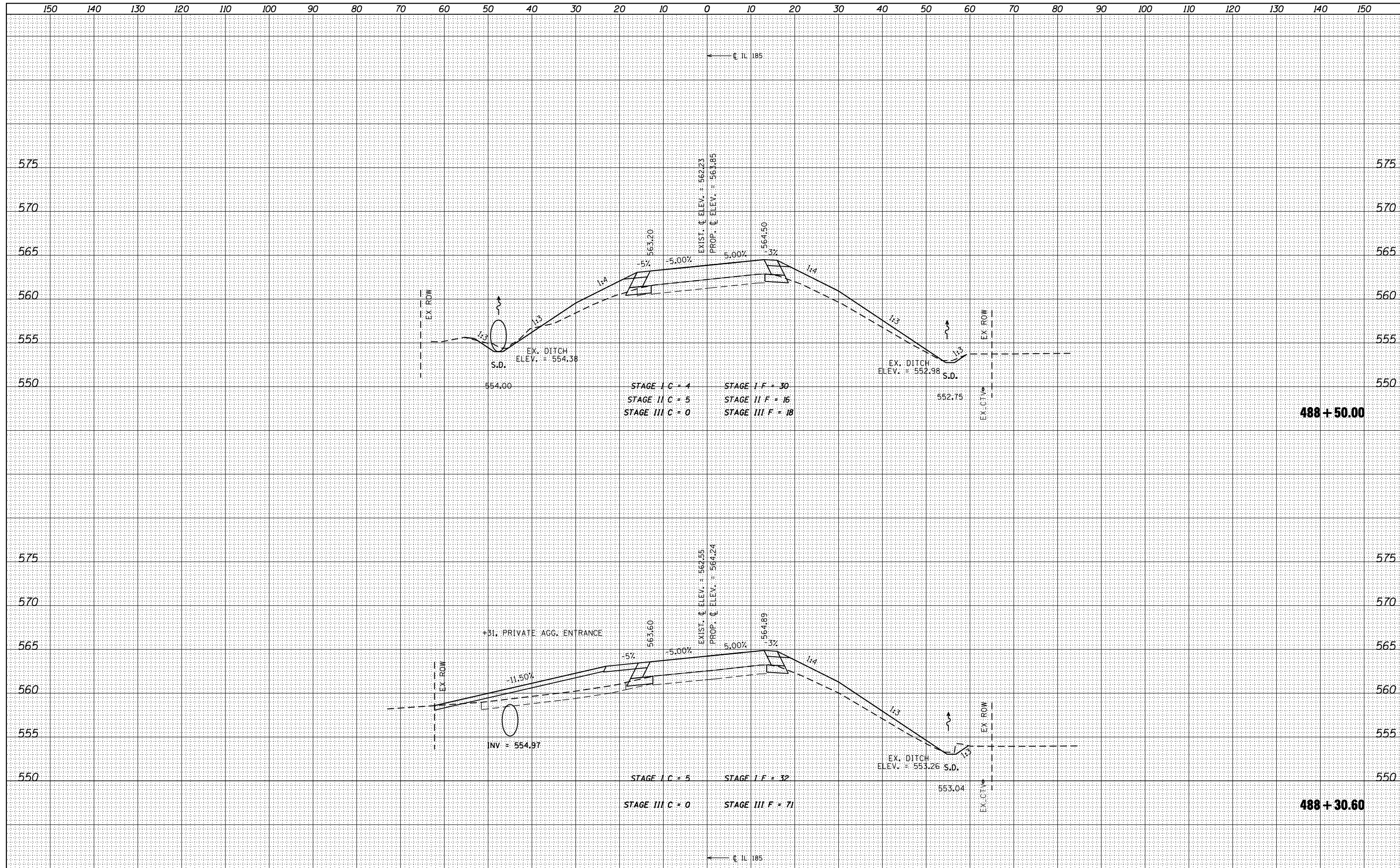






DATE	
BY	
SURVEYED	
PLOTTED	
TEMPLATE	
AREAS	
CHECKED	
NO.	

DATE	
BY	
SURVEYED	
PLOTTED	
TEMPLATE	
AREAS	
CHECKED	
NO.	



design firm  
no. 184001036

engineers • planners • land surveyors

USER NAME = g.jameson	DESIGNED -	REVISED
FILE NAME = D672D08-SN0680027-SHT 05ECHK00	CHECKED -	REVISED
PLOT SCALE = 20.0000' / IN.	DRAWN -	REVISED
PLOT DATE = 10/15/2015	CHECKED -	REVISED

**STATE OF ILLINOIS  
DEPARTMENT OF TRANSPORTATION**

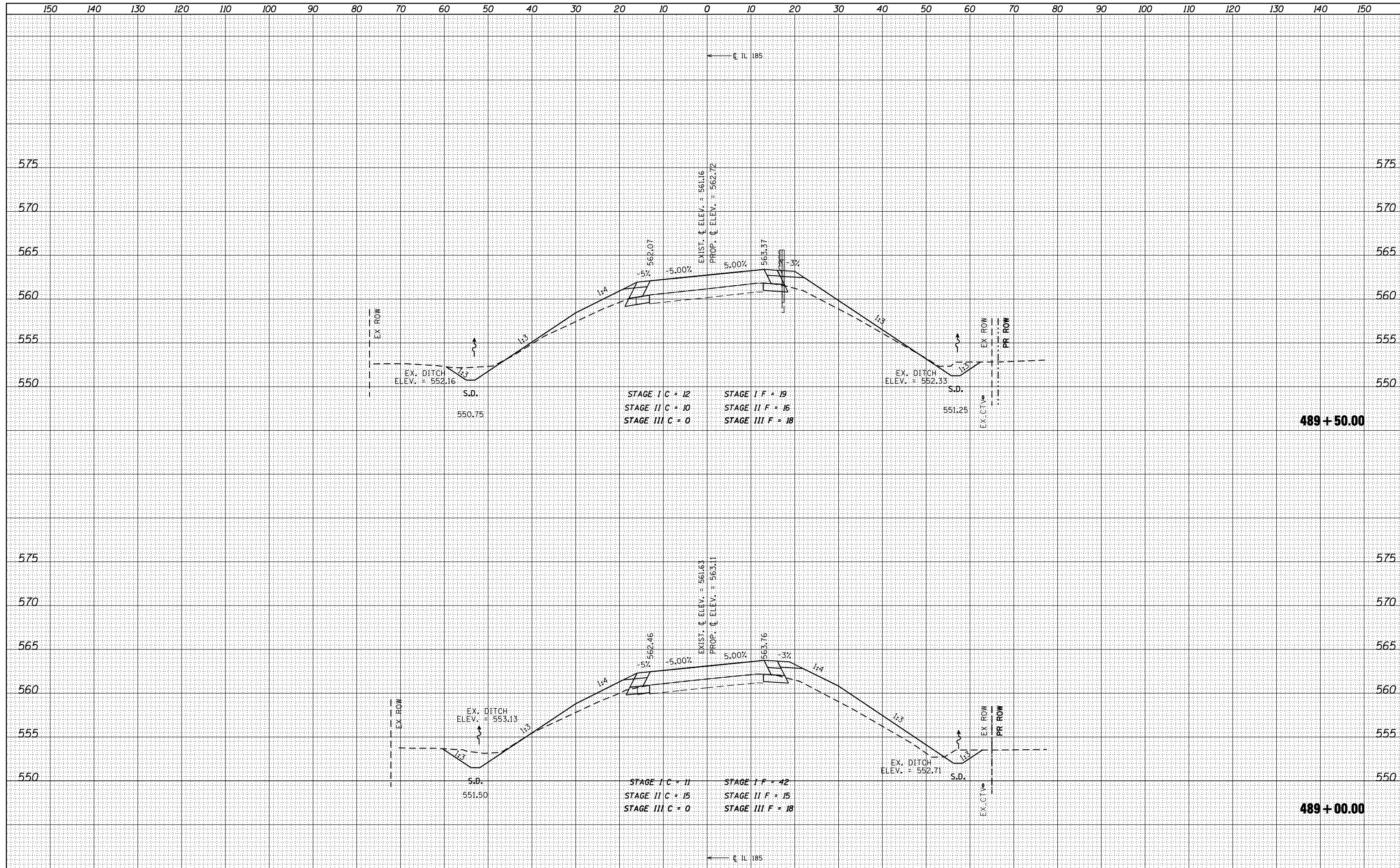
**CROSS SECTIONS  
IL RTE 185 OVER BAYOU CREEK**

SCALE: 1" = 10'    SHEET NO. 5 OF 16 SHEETS    STA. 488+30.60 TO STA. 488+50.00

F.A.P. RTE.	SECTION	COUNTY	TOTAL SHEETS	SHEET NO.
777	10B-2, 405B-1	MONTGOMERY	121	110
			CONTRACT NO.	72D08
ILLINOIS FED. AID PROJECT				

DATE	
BY	
SURVEYED	
PLOTTED	
TEMPLATE	
AREAS	
CHECKED	
NO.	

DATE	
BY	
SURVEYED	
PLOTTED	
TEMPLATE	
AREAS	
CHECKED	
NO.	



design firm  
no. 184001036

engineers • planners • land surveyors

USER NAME = gjameson	DESIGNED -	REVISED
FILE NAME = D672D08-SN0680027-SHT 01	CHECKED -	REVISED
PLOT SCALE = 20.0000' / IN.	DRAWN -	REVISED
PLOT DATE = 10/15/2015	CHECKED -	REVISED

**STATE OF ILLINOIS  
DEPARTMENT OF TRANSPORTATION**

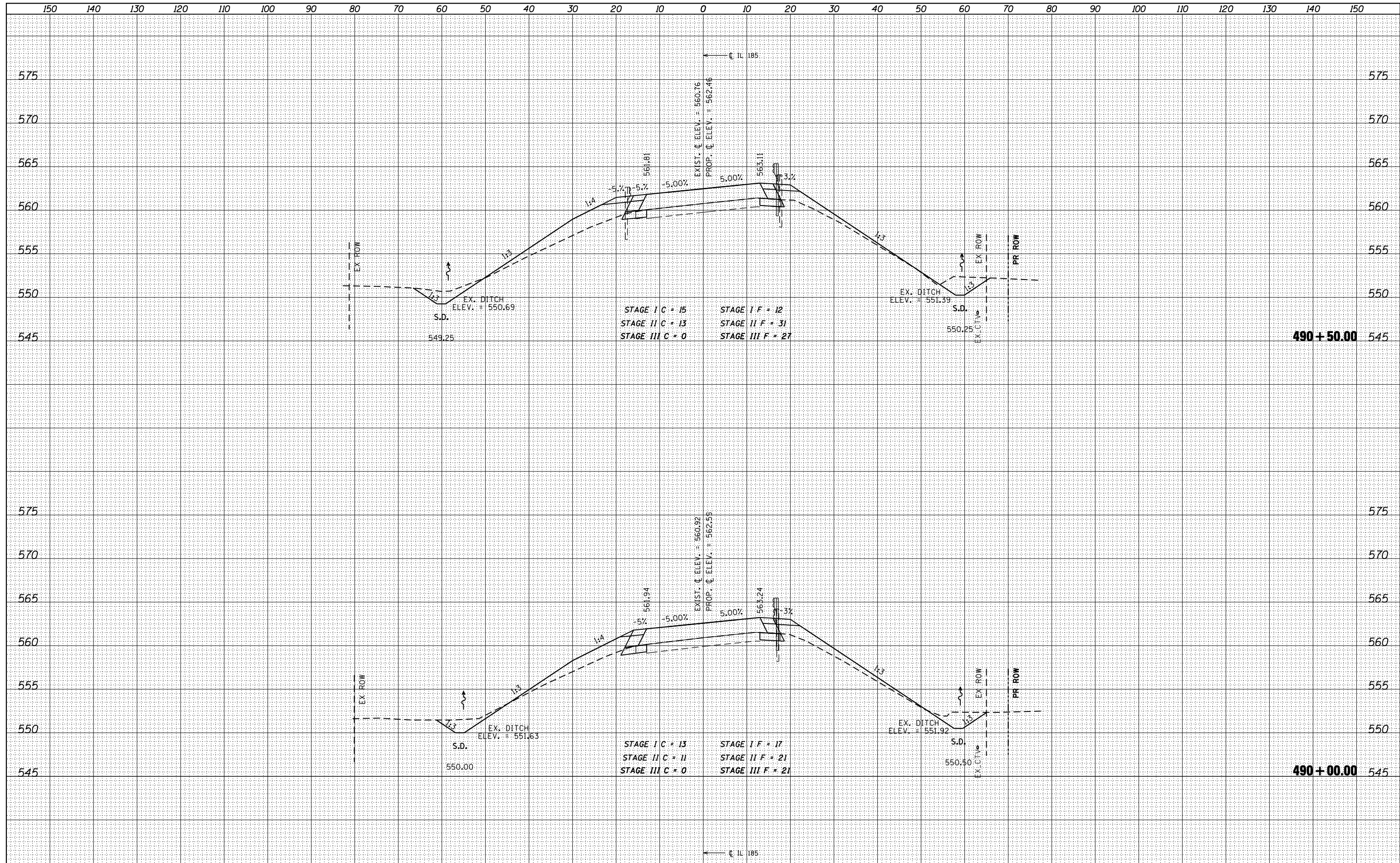
**CROSS SECTIONS  
IL RTE 185 OVER BAYOU CREEK**

SCALE: 1" = 10'    SHEET NO. 6 OF 16 SHEETS    STA. 489+00.00 TO STA. 489+50.00

F.A.P. RTE.	SECTION	COUNTY	TOTAL SHEETS	SHEET NO.
777	10B-2, 405B-1	MONTGOMERY	121	111
			CONTRACT NO. 72D08	
ILLINOIS FED. AID PROJECT				

DATE	
BY	
SURVEYED	
PLOTTED	
TEMPLATE	
AREAS	
CHECKED	
FINAL SURVEY	
NOTE BOOK	
NO.	

DATE	
BY	
SURVEYED	
PLOTTED	
TEMPLATE	
AREAS	
CHECKED	
ORIGINAL SURVEY	
NOTE BOOK	
NO.	



design firm  
no. 184001036

engineers • planners • land surveyors

USER NAME = gjameson	DESIGNED -	REVISED -
FILE NAME = D672D08-SN0680027-SHT 08	CHECKED -	REVISED -
PLOT SCALE = 20.0000' / IN.	DRAWN -	REVISED -
PLOT DATE = 10/15/2015	CHECKED -	REVISED -

**STATE OF ILLINOIS  
DEPARTMENT OF TRANSPORTATION**

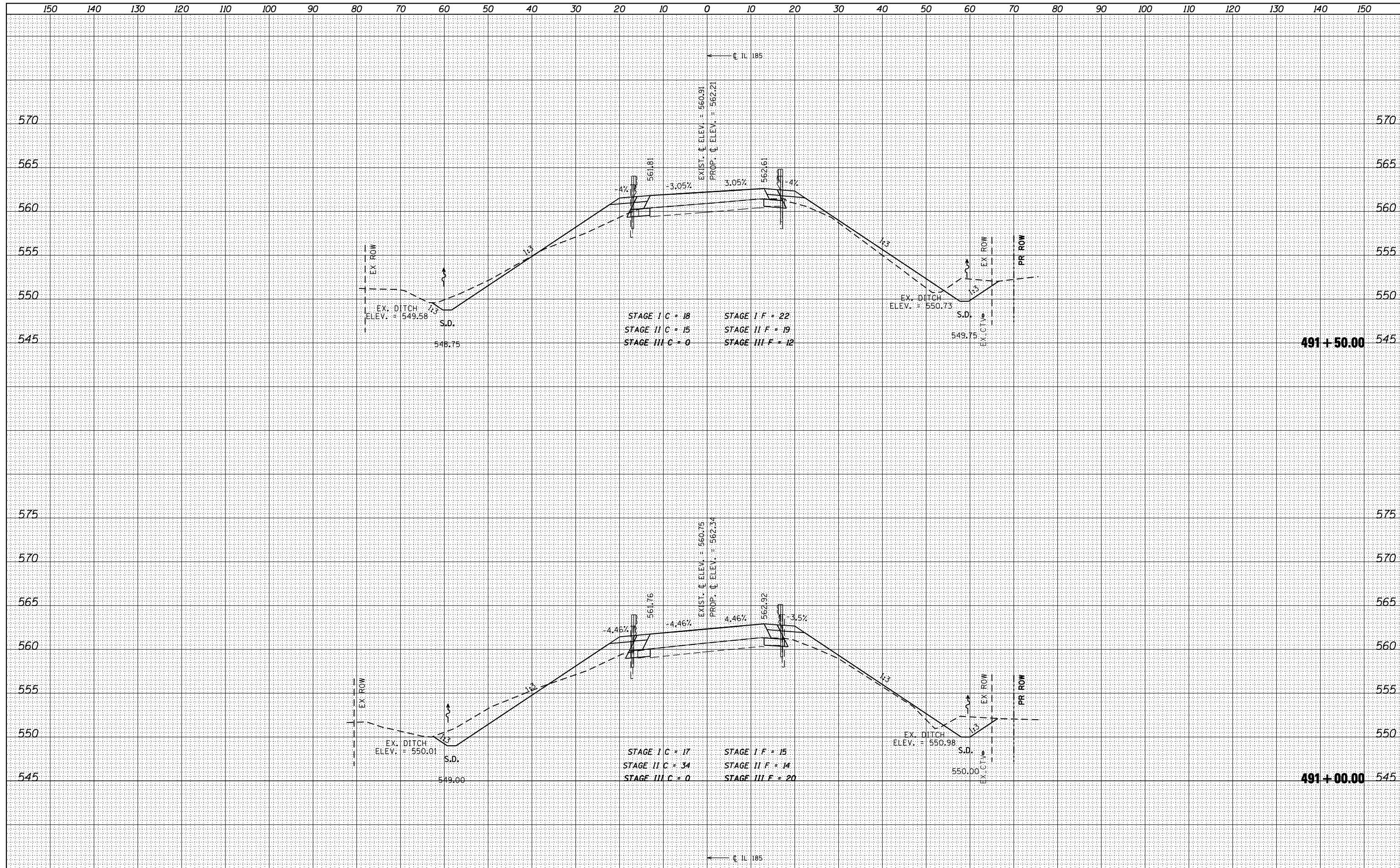
**CROSS SECTIONS  
IL RTE 185 OVER BAYOU CREEK**

SCALE: 1" = 10'    SHEET NO. 7 OF 16 SHEETS    STA. 490+00.00 TO STA. 490+50.00

F.A.P. RTE.	SECTION	COUNTY	TOTAL SHEETS	SHEET NO.
777	10B-2, 405B-1	MONTGOMERY	121	112
			CONTRACT NO. 72D08	
ILLINOIS FED. AID PROJECT				

DATE	
BY	
SURVEYED	
PLOTTED	
TEMPLATE	
AREAS	
CHECKED	
NO.	

DATE	
BY	
SURVEYED	
PLOTTED	
TEMPLATE	
AREAS	
CHECKED	
NO.	



design firm  
no. 184001036

engineers • planners • land surveyors

USER NAME = gjameson	DESIGNED -	REVISED -
FILE NAME = D672D08-SN0680027-SHT 08CHK00	REVISION	REVISED
PLOT SCALE = 20.0000' / IN.	DRAWN -	REVISED
PLOT DATE = 10/15/2015	CHECKED -	REVISED

**STATE OF ILLINOIS  
DEPARTMENT OF TRANSPORTATION**

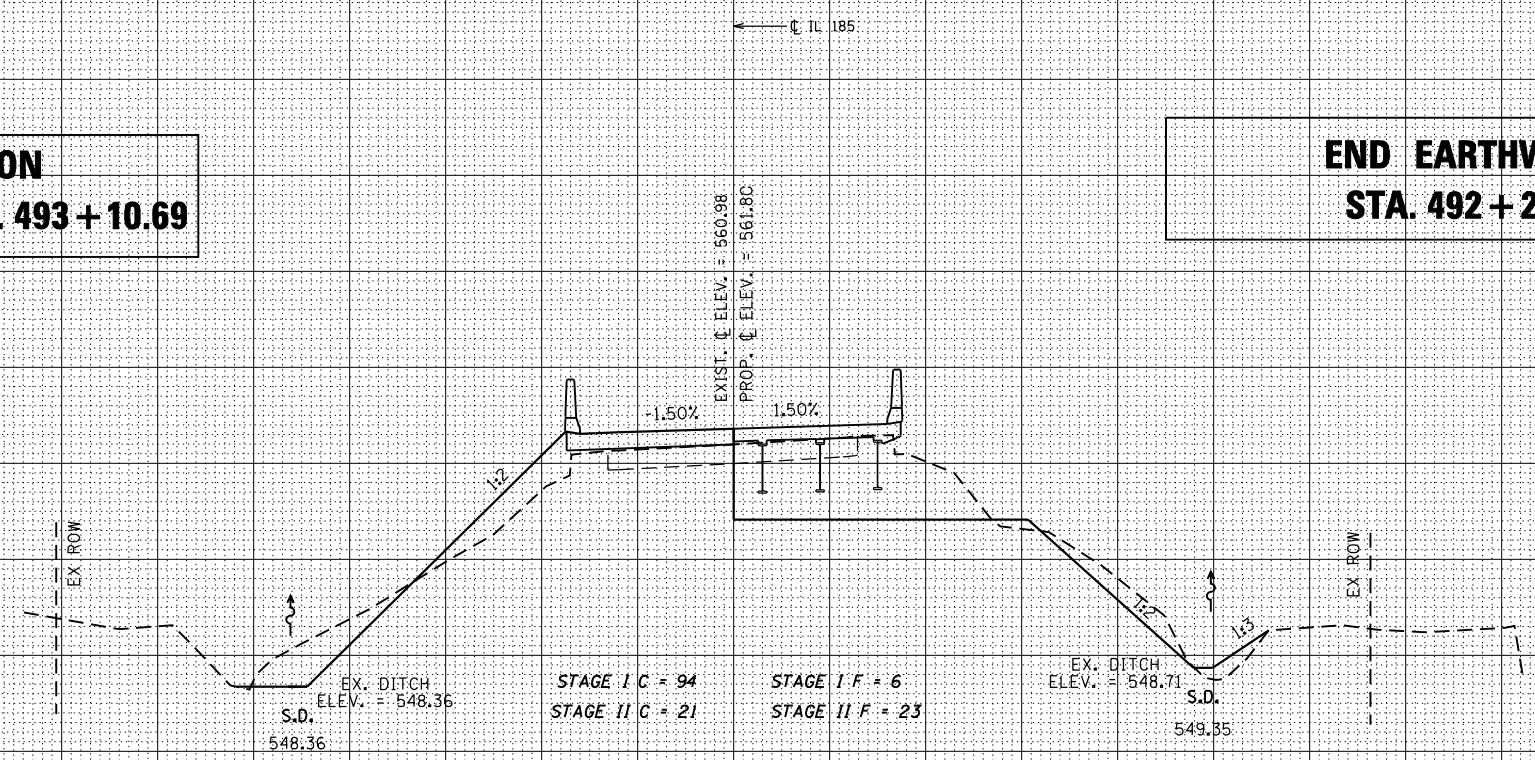
**CROSS SECTIONS  
IL RTE 185 OVER BAYOU CREEK**

SCALE: 1" = 10' SHEET NO. 8 OF 16 SHEETS STA. 491+00.00 TO STA. 491+50.00

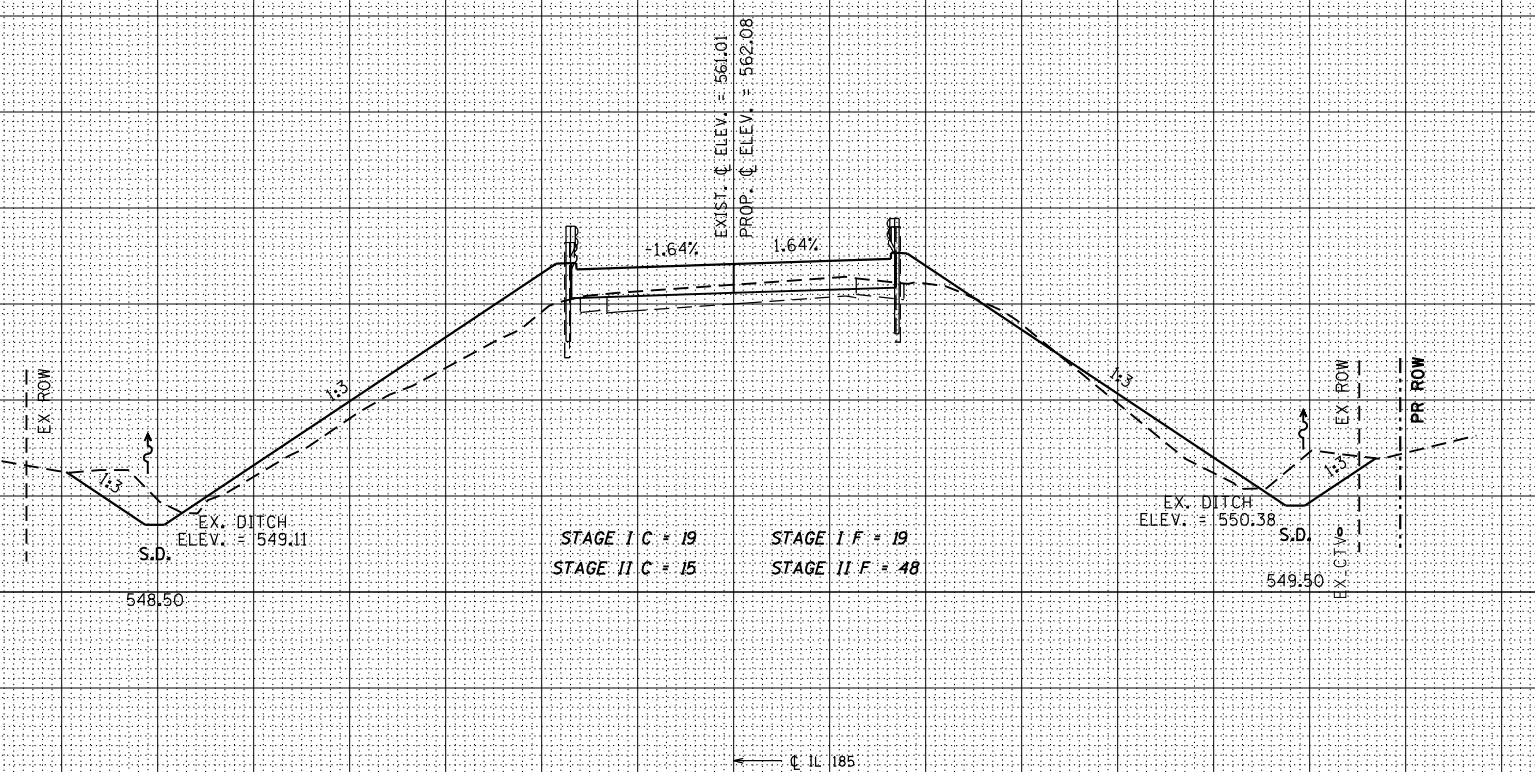
F.A.P. RTE.	SECTION	COUNTY	TOTAL SHEETS	SHEET NO.
777	10B-2, 405B-1	MONTGOMERY	121	113
CONTRACT NO. 72D08			ILLINOIS FED. AID PROJECT	

**BRIDGE OMISSION**  
**STA. 492 + 29.31 TO STA. 493 + 10.69**

**END EARTHWORK**  
**STA. 492 + 29.31**



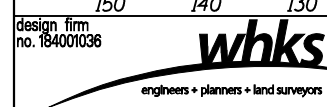
**492 + 28.27**



**492 + 00.00**

DATE	
BY	
SURVEYED	
PLOTTED	
TEMPLATE	
AREAS	
CHECKED	
NO.	

DATE	
BY	
SURVEYED	
PLOTTED	
TEMPLATE	
AREAS	
CHECKED	
NO.	



USER NAME = gjameson	DESIGNED -	REVISED -
FILE NAME = D672D08-SN0680027-SHT 086KKB	CHECKED -	REVISED -
PLOT SCALE = 20.0000' / IN.	DRAWN -	REVISED -
PLOT DATE = 10/15/2015	CHECKED -	REVISED -

**STATE OF ILLINOIS**  
**DEPARTMENT OF TRANSPORTATION**

**CROSS SECTIONS**  
**IL RTE 185 OVER BAYOU CREEK**

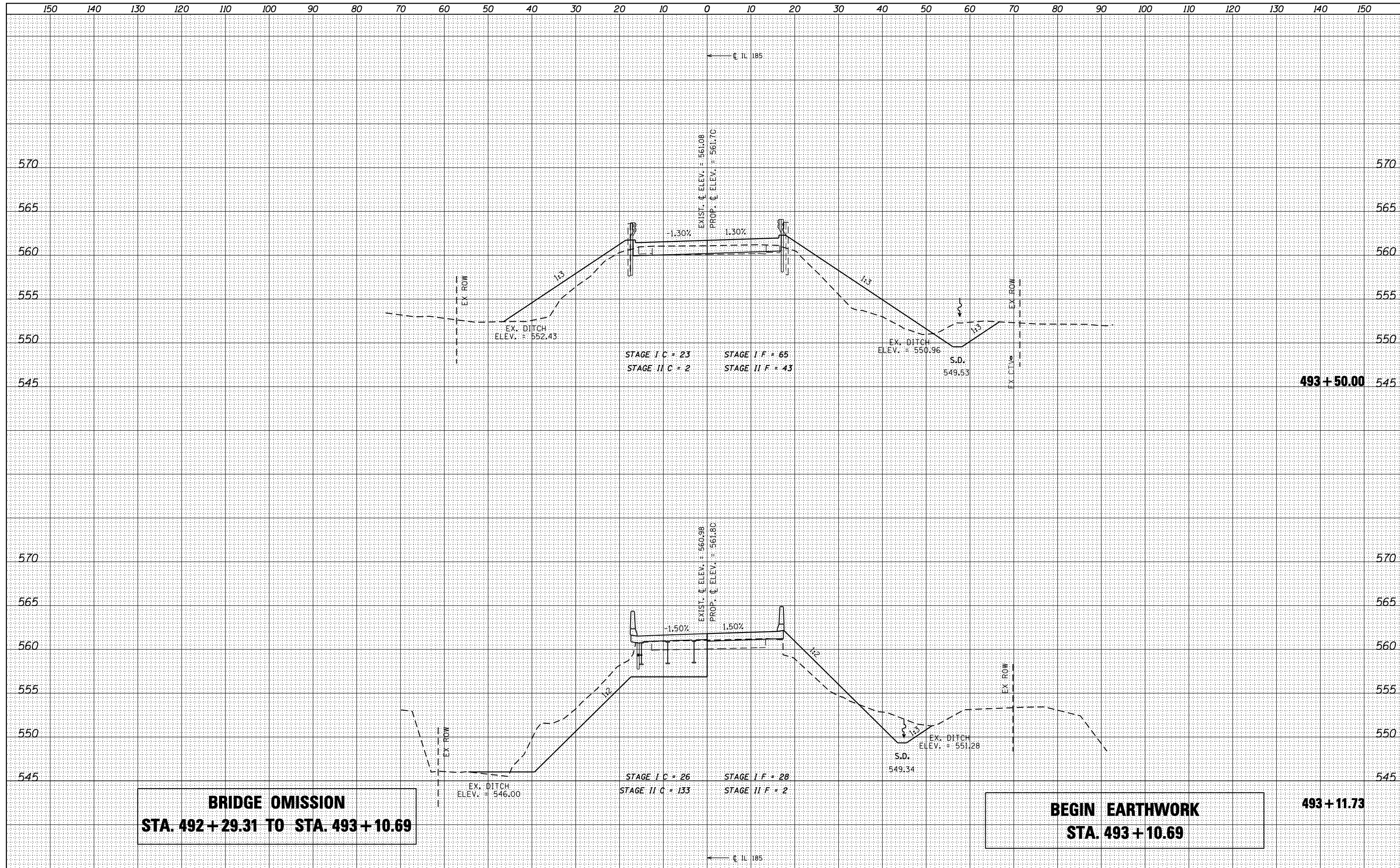
SCALE: 1" = 10' SHEET NO. 9 OF 16 SHEETS STA. 492+00.00 TO STA. 492+28.27

F.A.P. RTE.	SECTION	COUNTY	TOTAL SHEETS	SHEET NO.
777	10B-2, 405B-1	MONTGOMERY	121	114
			CONTRACT NO. 72D08	

ILLINOIS FED. AID PROJECT

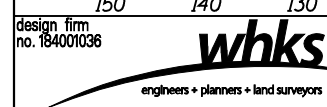
DATE	
BY	
SURVEYED	
PLOTTED	
TEMPLATE	
AREAS	
CHECKED	
NO.	

DATE	
BY	
SURVEYED	
PLOTTED	
TEMPLATE	
AREAS	
CHECKED	
NO.	



**BRIDGE OMISSION**  
**STA. 492 + 29.31 TO STA. 493 + 10.69**

**BEGIN EARTHWORK**  
**STA. 493 + 10.69**



USER NAME = g_jameson	DESIGNED -	REVISED
FILE NAME = D672D08-SN0680027-SHT 08	CHECKED -	REVISED
PLOT SCALE = 20.0000' / IN.	DRAWN -	REVISED
PLOT DATE = 10/15/2015	CHECKED -	REVISED

**STATE OF ILLINOIS**  
**DEPARTMENT OF TRANSPORTATION**

**CROSS SECTIONS**  
**IL RTE 185 OVER BAYOU CREEK**  
 SCALE: 1" = 10' SHEET NO. 10 OF 16 SHEETS STA. 493+11.73 TO STA. 493+50.00

F.A.P. RTE.	SECTION	COUNTY	TOTAL SHEETS	SHEET NO.
777	10B-2, 405B-1	MONTGOMERY	121	115
				CONTRACT NO. 72D08
ILLINOIS FED. AID PROJECT				

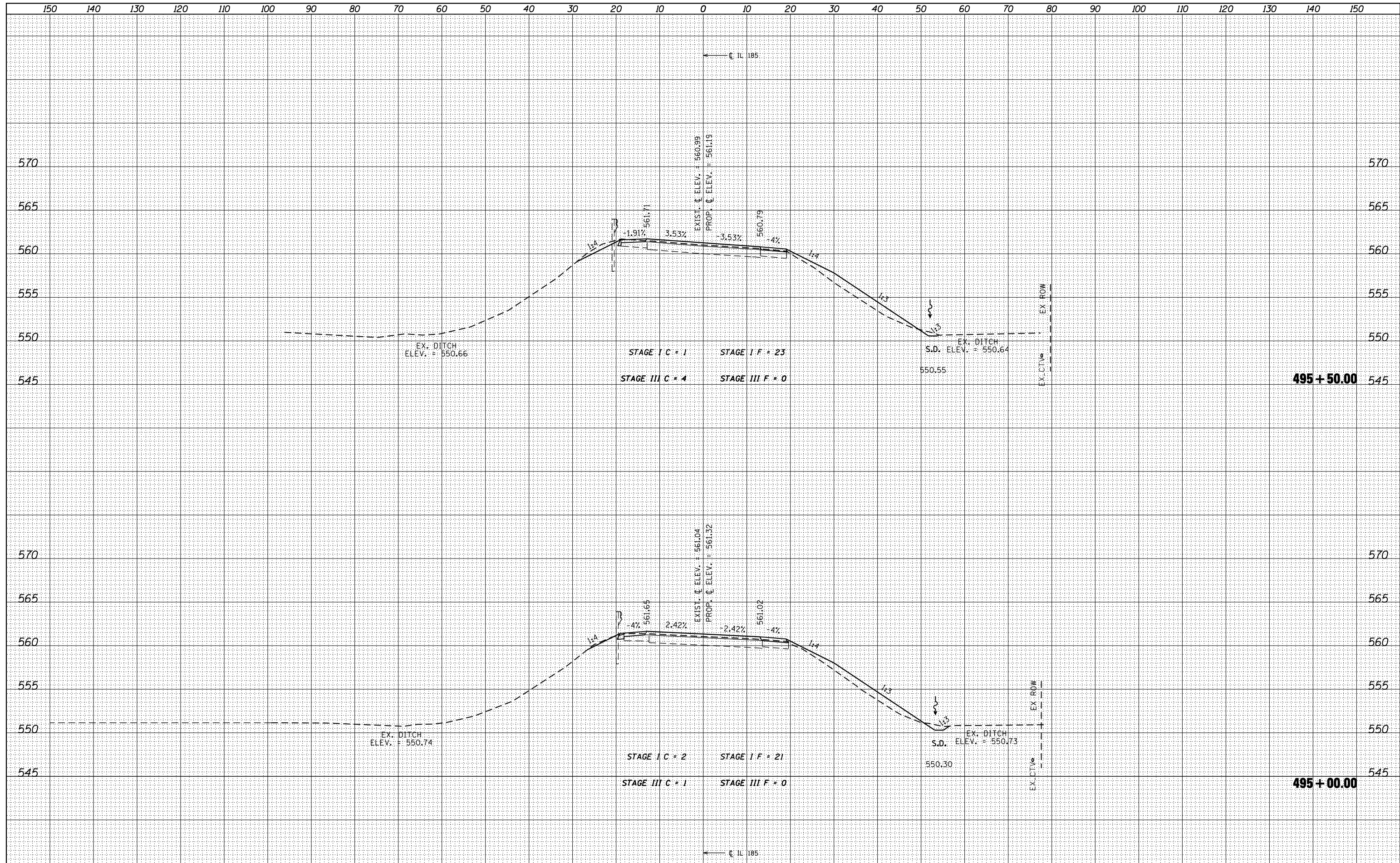






DATE	
BY	
SURVEYED	
PLOTTED	
TEMPLATE	
AREAS	
CHECKED	
FINL	
SURVEY	
NOTE BOOK	
NO.	

DATE	
BY	
SURVEYED	
PLOTTED	
TEMPLATE	
AREAS	
CHECKED	
ORIGINAL	
SURVEY	
NOTE BOOK	
NO.	



design firm  
no. 184001036

engineers • planners • land surveyors

USER NAME = gjameson	DESIGNED -	REVISED
FILE NAME = D672D08-SN0680027-SHT 01	CHECKED -	REVISED
PLOT SCALE = 20.0000' / IN.	DRAWN -	REVISED
PLOT DATE = 10/15/2015	CHECKED -	REVISED

STATE OF ILLINOIS  
DEPARTMENT OF TRANSPORTATION

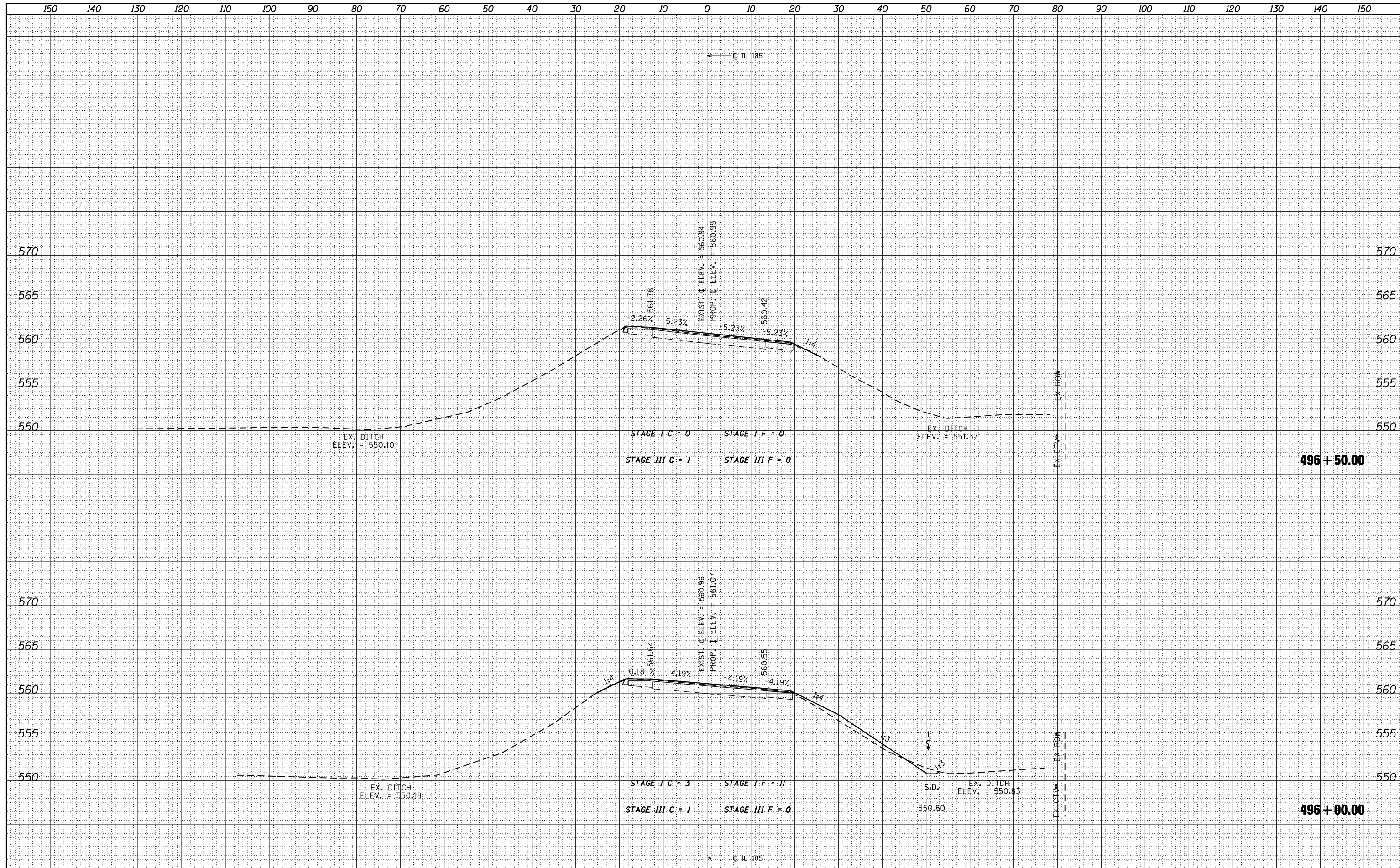
CROSS SECTIONS  
IL RTE 185 OVER BAYOU CREEK

SCALE: 1" = 10'  
SHEET NO. 13 OF 16 SHEETS  
STA. 495+00.00 TO STA. 495+50.00

F.A.P. RTE.	SECTION	COUNTY	TOTAL SHEETS	SHEET NO.
777	10B-2, 405B-1	MONTGOMERY	121	118
CONTRACT NO. 72D08			ILLINOIS FED. AID PROJECT	

DATE	
BY	
FINISHED SURVEY	
PLOTTED	
TEMPLATE	
AREAS	
CHECKED	
NO.	

DATE	
BY	
ORIGINAL SURVEY	
PLOTTED	
TEMPLATE	
AREAS	
CHECKED	
NO.	



design firm  
no. 184001036

engineers • planners • land surveyors

USER NAME = g.jameson	DESIGNED -	REVISED
FILE NAME = D672D08-SN0680027-SHT 04	CHECKED -	REVISED
PLOT SCALE = 20.0000' / IN.	DRAWN -	REVISED
PLOT DATE = 10/15/2015	CHECKED -	REVISED

**STATE OF ILLINOIS  
DEPARTMENT OF TRANSPORTATION**

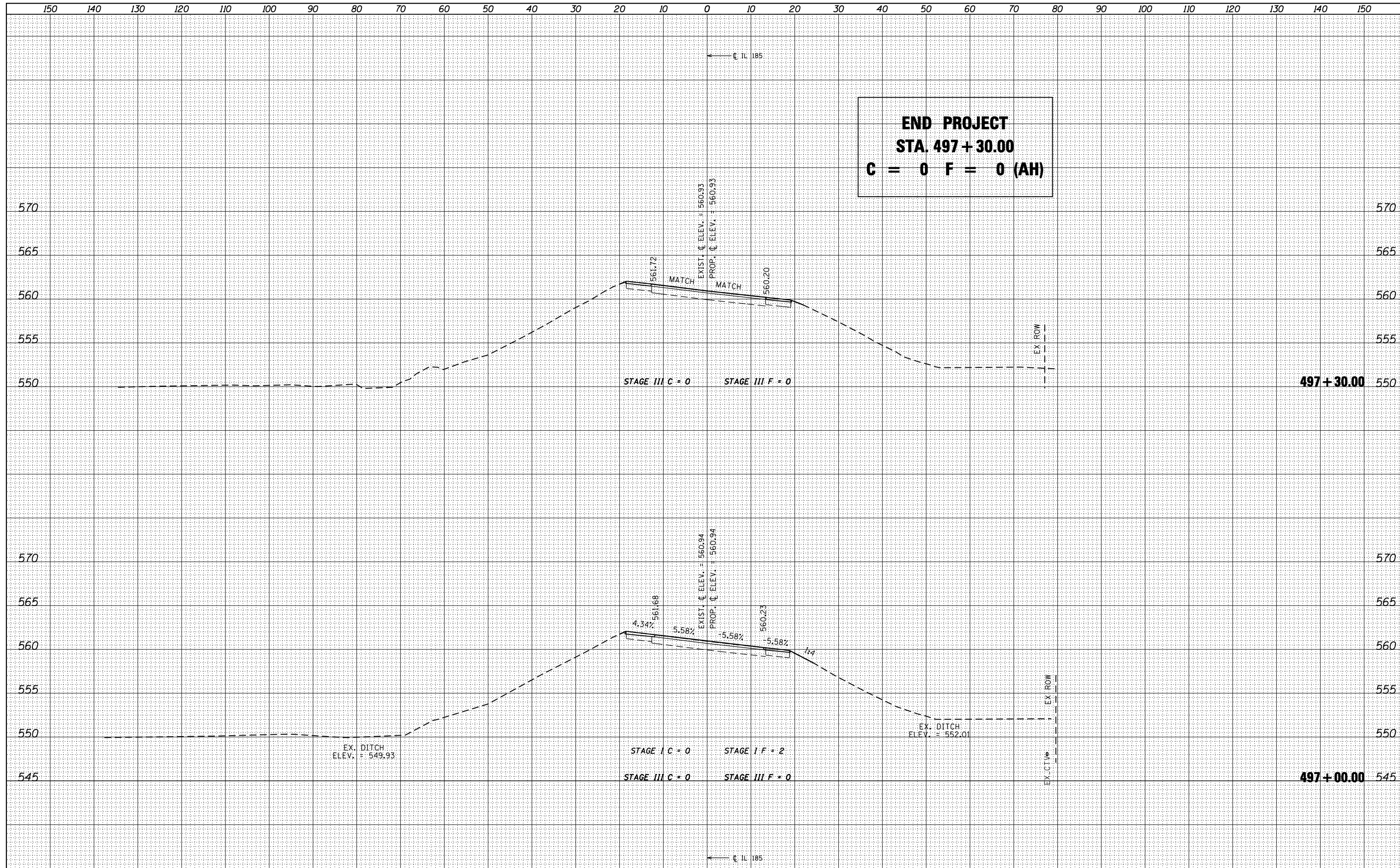
**CROSS SECTIONS  
IL RTE 185 OVER BAYOU CREEK**

SCALE: 1" = 10'    SHEET NO. 14 OF 16 SHEETS    STA. 496+00.00 TO STA. 496+50.00

F.A.P. RTE.	SECTION	COUNTY	TOTAL SHEETS	SHEET NO.
777	10B-2, 405B-1	MONTGOMERY	121	119
			CONTRACT NO. 72D08	
ILLINOIS FED. AID PROJECT				

BY	DATE
SURVEYED	
PLOTTED	
TEMPLATE	
AREAS	
CHECKED	
NO.	

BY	DATE
SURVEYED	
PLOTTED	
TEMPLATE	
AREAS	
CHECKED	
NO.	



design firm  
no. 184001036

engineers • planners • land surveyors

USER NAME = gjameson	DESIGNED -	REVISED
FILE NAME = D672D08-SN0680027-SHT 01	CHECKED -	REVISED
PLOT SCALE = 20.0000' / IN.	DRAWN -	REVISED
PLOT DATE = 10/15/2015	CHECKED -	REVISED

**STATE OF ILLINOIS**  
**DEPARTMENT OF TRANSPORTATION**

**CROSS SECTIONS**  
**IL RTE 185 OVER BAYOU CREEK**

SCALE: 1" = 10' SHEET NO. 15 OF 16 SHEETS STA. 497+00.00 TO STA. 497+30.00

F.A.P. RTE.	SECTION	COUNTY	TOTAL SHEETS	SHEET NO.
777	10B-2, 405B-1	MONTGOMERY	121	120
CONTRACT NO. 72D08			ILLINOIS FED. AID PROJECT	

