

STATE OF ILLINOIS  
DEPARTMENT OF TRANSPORTATION  
DIVISION OF HIGHWAYS

**PROPOSED  
HIGHWAY PLANS**

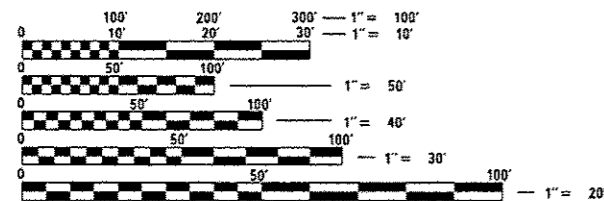
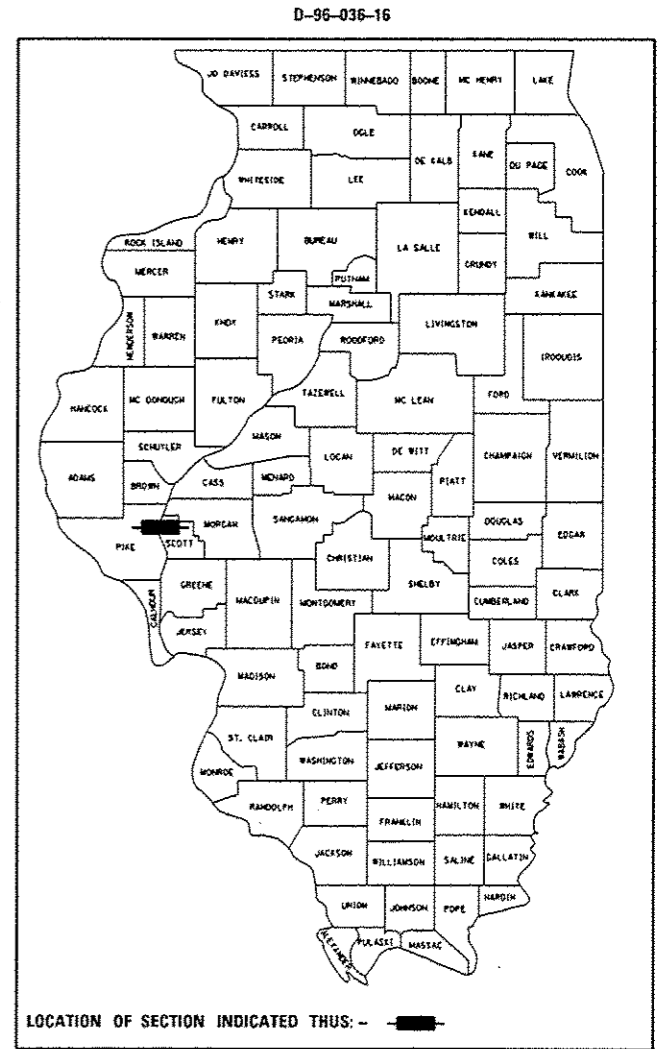
FAI ROUTE 72 (I-72)  
SECTION (75,86) I

INSTALLING BIRD CONTROL MEASURES  
PIKE COUNTY

C-96-036-16

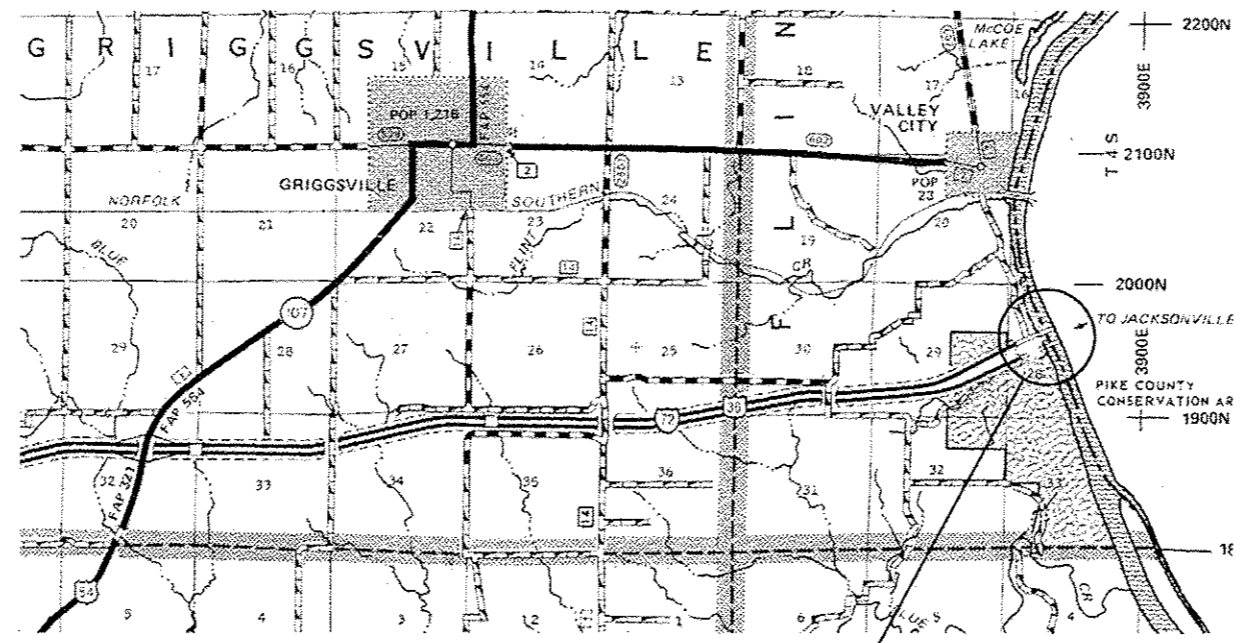
F.A.I. RTE.	SECTION	COUNTY	TOTAL SHEETS	SHEET NO.
72	(75,86) I	PIKE	4	1
		ILLINOIS	CONTRACT NO. 72123	

FOR INDEX OF SHEETS, SEE SHEET NO. 2



FULL SIZE PLANS HAVE BEEN PREPARED USING STANDARD ENGINEERING SCALES. REDUCED SIZED PLANS WILL NOT CONFORM TO STANDARD SCALES. IN MAKING MEASUREMENTS ON REDUCED PLANS, THE ABOVE SCALES MAY BE USED.

J.U.L.I.E.  
JOINT UTILITY LOCATION INFORMATION FOR EXCAVATION  
1-800-892-0123  
OR 811



PROJECT LOCATION  
SN 075-0122 & 075-0123  
I-72 OVER THE ILLINOIS RIVER  
3.7 MILES WEST OF IL 100

BRIDGE MAINTENANCE ENGINEER: BRANDON DUDLEY - (217) 785-9290  
BRIDGE INSPECTION ENGINEER: DAVE COPENBARGER - (217) 785-5306

GROSS LENGTH = 6470 FT. = 1.23 MILE  
NET LENGTH = 6470 FT. = 1.23 MILE

CONTRACT NO. 72123

STATE OF ILLINOIS  
DEPARTMENT OF TRANSPORTATION  
DIVISION OF HIGHWAYS

SUBMITTED *January 25<sup>th</sup> 16*  
*Roger L. Drisdell, P.E.*  
DEPUTY DIRECTOR OF HIGHWAYS, REGIONAL ENGINEER

*Jan 29 20 16*  
*Maureen M. Addis, P.E., EIT*  
ENGINEER OF DESIGN AND ENVIRONMENT

*Jan 29 20 16*  
*Cher Osman, P.E., EIT*  
DIRECTOR OF HIGHWAYS, CHIEF ENGINEER

PRINTED BY THE AUTHORITY  
OF THE STATE OF ILLINOIS

INDEX OF SHEETS

- 1 COVER SHEET
- 2 INDEX, STANDARDS, GENERAL NOTES, SIGNATURES, & SUMMARY OF QUANTITIES
- 3 BRIDGE GENERAL PLAN AND ELEVATION
- 4 PEST CONTROL GRATING DETAILS

HIGHWAY STANDARDS

- 701101-04
- 701106-02
- 701400-08
- 701406-09
- 701901-04

GENERAL NOTES:

1. PLAN DIMENSIONS AND DETAILS RELATIVE TO EXISTING PLANS ARE SUBJECT TO NOMINAL CONSTRUCTION VARIATIONS. THE CONTRACTOR SHALL FIELD VERIFY EXISTING DIMENSIONS AND DETAILS AFFECTING NEW CONSTRUCTION AND MAKE NECESSARY APPROVED ADJUSTMENTS PRIOR TO CONSTRUCTION OR ORDERING OF MATERIALS. SUCH VARIATIONS SHALL NOT BE CAUSE FOR ADDITIONAL COMPENSATION FOR A CHANGE IN THE SCOPE OF WORK, HOWEVER, THE CONTRACTOR WILL BE PAID FOR THE QUANTITY ACTUALLY FURNISHED AT THE UNIT PRICE BID FOR THE WORK.

**STATE OF ILLINOIS**  
**DEPARTMENT OF TRANSPORTATION**  
**DIVISION OF HIGHWAYS**  
**DISTRICT 6**

---

EXAMINED JANUARY 25 20 16

*John C. Wiggam*  
ENGINEER OF OPERATIONS

---

EXAMINED January 25 20 16

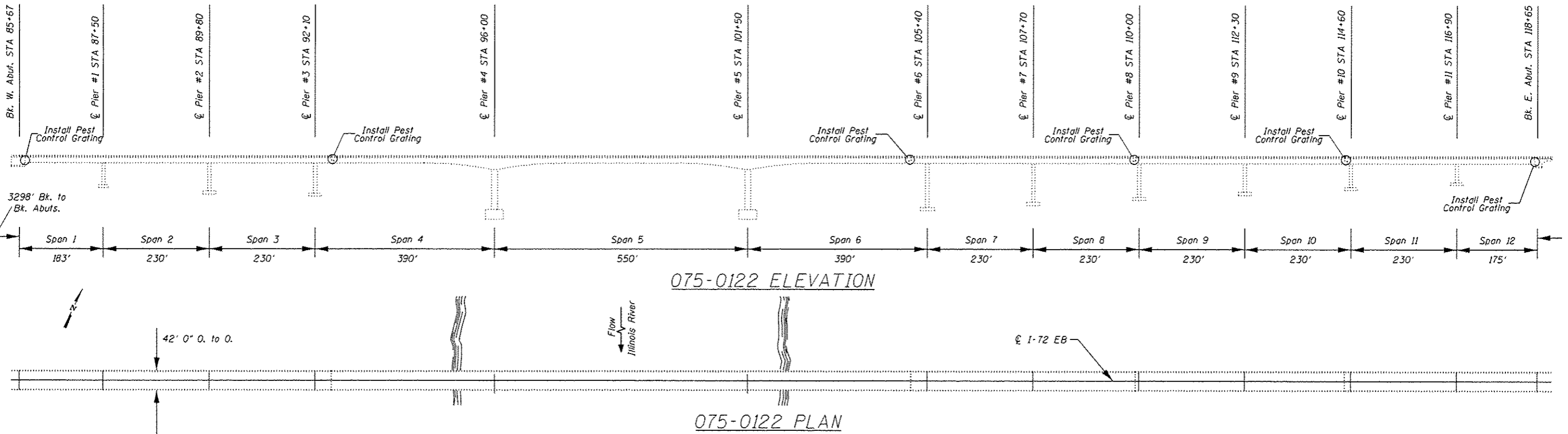
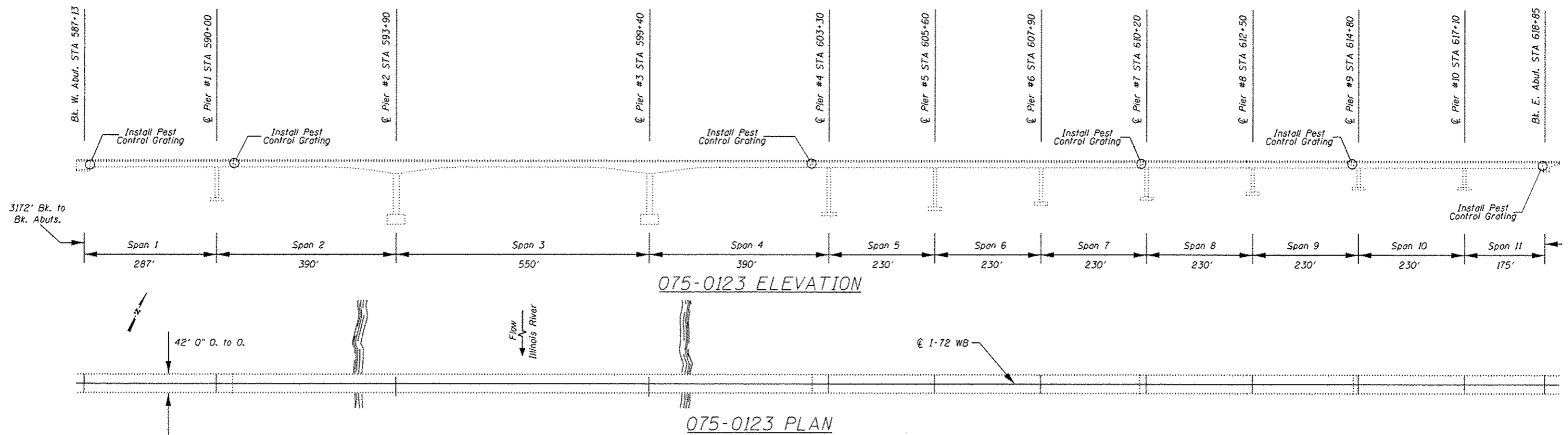
*Ron Schamberg*  
ENGINEER OF PROJECT IMPLEMENTATION

---

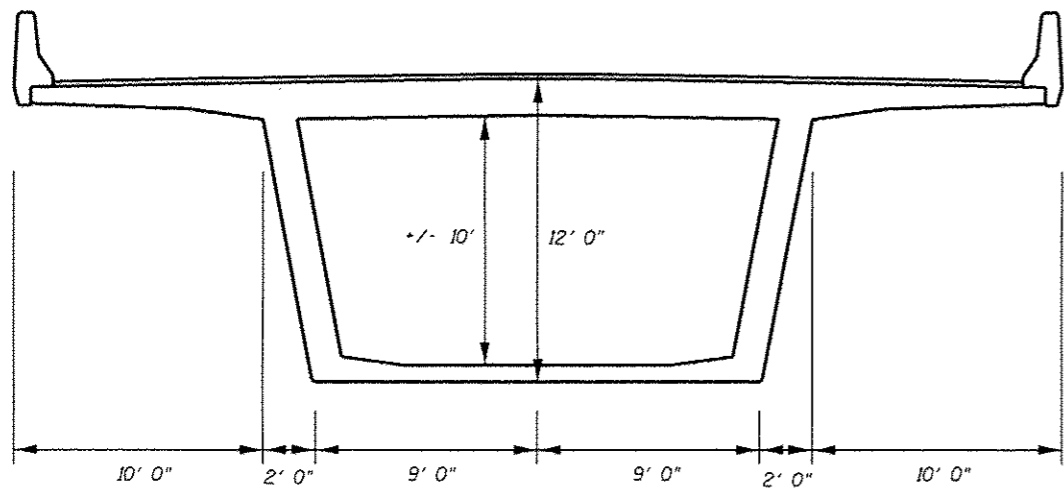
EXAMINED January 25 20 16

*Jeffrey P. Myers*  
ENGINEER OF PROGRAM DEVELOPMENT

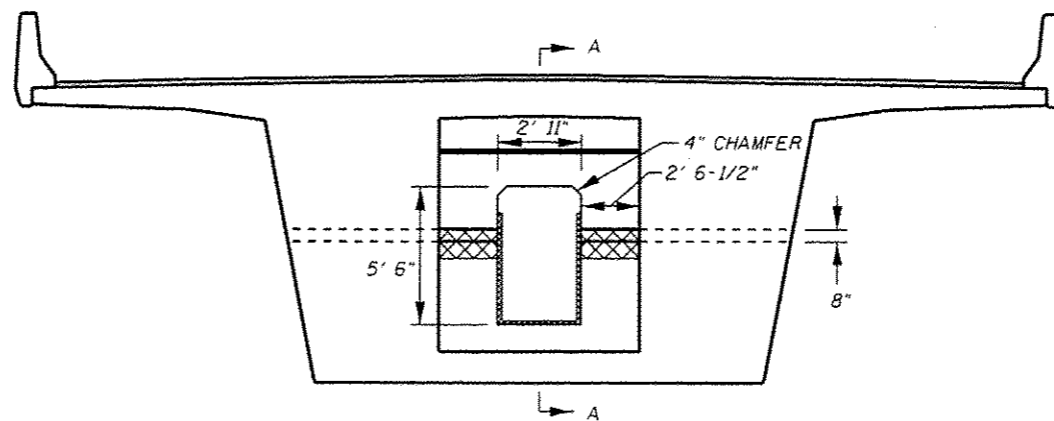
				CONSTR. CODE	
				100% STATE	
				BRIDGE	
				OD14	
				PIKE	
CODE NO.	ITEM	UNIT	TOTAL QUANTITY		
67100100	MOBILIZATION	L SUM	1		1
70100700	TRAFFIC CONTROL AND PROTECTION, STANDARD 701406	L SUM	1		1
X2200002	PEST CONTROL GRATING	SO FT	594		594
X7010410	SPEED DISPLAY TRAILER	CAL MD	2		2



FILE NAME: D:\OPERATIONS\Bridges\Bridges\plans\CR0172	USER NAME: dudleybm	DESIGNED: -	REVISED: -	<b>STATE OF ILLINOIS DEPARTMENT OF TRANSPORTATION</b>	<b>SN 075-0122 &amp; 0123 GENERAL PLAN &amp; ELEVATION</b>		F.A.I. RTE.: 72	SECTION: (75,06) 1	COUNTY: PIKE	TOTAL SHEETS: 4	SHEET NO.: 3
Full Size	123 - Valley City pest control plansheet.dgn	DRAWN: -	REVISED: -				CONTRACT NO. 72123				
	PLOT SCALE: 220:0.00000 1" = 11'	CHECKED: -	REVISED: -				ILLINOIS FED. AID PROJECT				
	PLOT DATE: 1/25/2016	DATE: -	REVISED: -				SCALE: SHEET OF SHEETS STA. TO STA.				

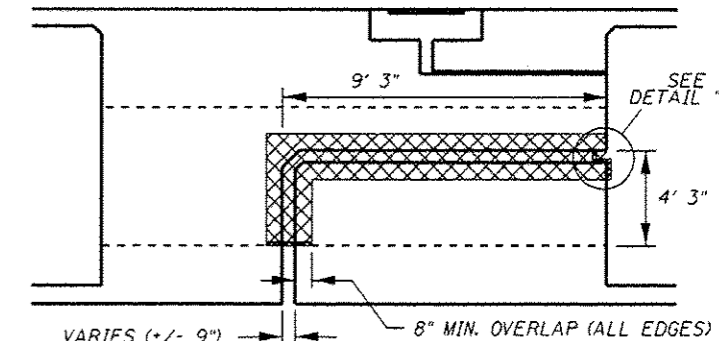


TYPICAL BRIDGE CROSS SECTION  
(DIMENSIONS VARY NEAR RIVER PIERS)



TYPICAL SECTION AT TYPE A HINGED BULKHEAD

(SN 075-0122 NEAR PIERS 3 & 6,  
SN 075-0123 NEAR PIERS 1 & 4)



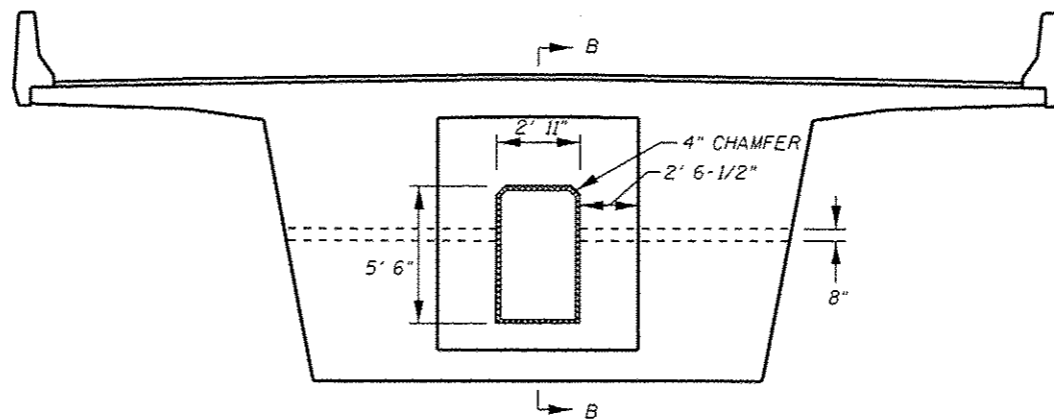
SECTION A-A

VARIES (+/- 9") 8" MIN. OVERLAP (ALL EDGES)

ESTIMATED QUANTITIES			
SN	LOCATION	DETAIL	PEST CONTROL GRATING (SQ FT)
075-0122	W. ABUT.	TY 2 ABUT.	22
075-0122	PIER 3	TY A HINGE	70
075-0122	PIER 6	TY A HINGE	70
075-0122	PIER 8	TY B HINGE	55
075-0122	PIER 10	TY B HINGE	55
075-0122	E. ABUT.	TY 1 ABUT.	25
075-0123	W. ABUT.	TY 2 ABUT.	22
075-0123	PIER 1	TY A HINGE	70
075-0123	PIER 4	TY A HINGE	70
075-0123	PIER 7	TY B HINGE	55
075-0123	PIER 9	TY B HINGE	55
075-0123	E. ABUT.	TY 1 ABUT.	25
TOTAL:			594

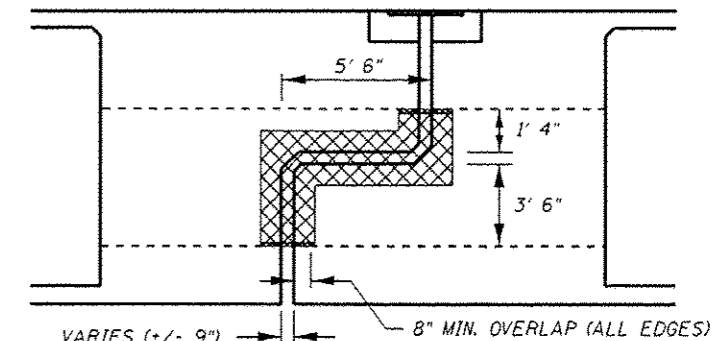


PEST CONTROL GRATING AREAS



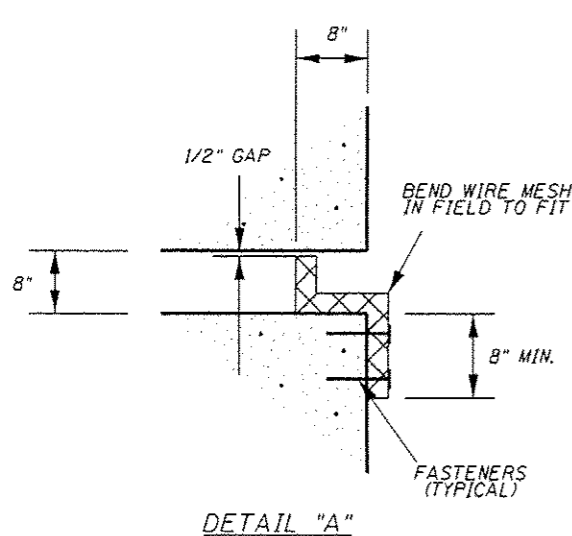
TYPICAL SECTION AT TYPE B HINGED BULKHEAD

(SN 075-0122 NEAR PIERS 8 & 10,  
SN 075-0123 NEAR PIERS 7 & 9)

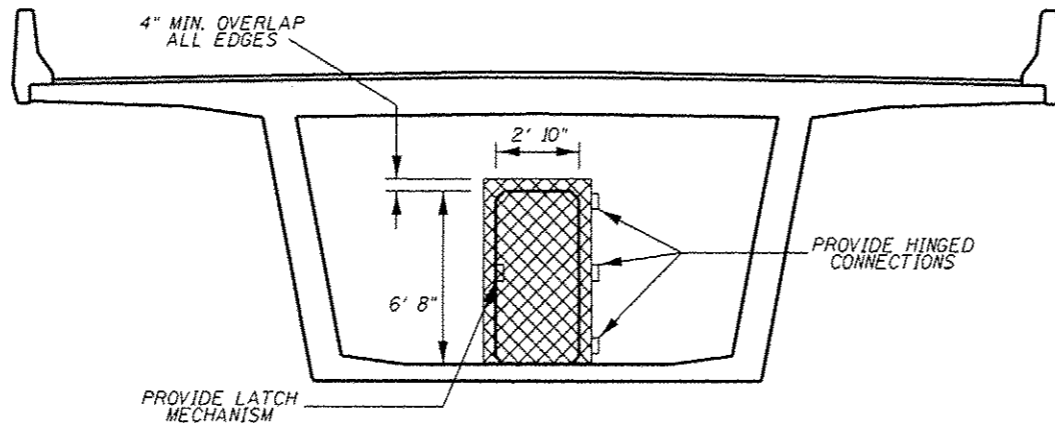


SECTION B-B

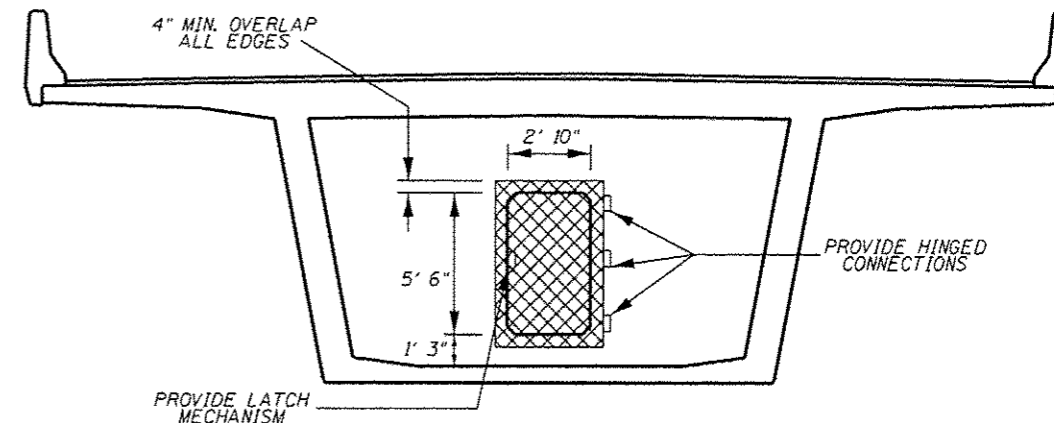
VARIES (+/- 9") 8" MIN. OVERLAP (ALL EDGES)



DETAIL "A"



ABUTMENT BULKHEAD TYPE 1  
(EAST ABUTMENTS, BOTH STRUCTURES)



ABUTMENT BULKHEAD TYPE 2  
(WEST ABUTMENTS, BOTH STRUCTURES)

NOTE: SEE SPECIAL PROVISION FOR ADDITIONAL DETAILS FOR THIS PAY ITEM