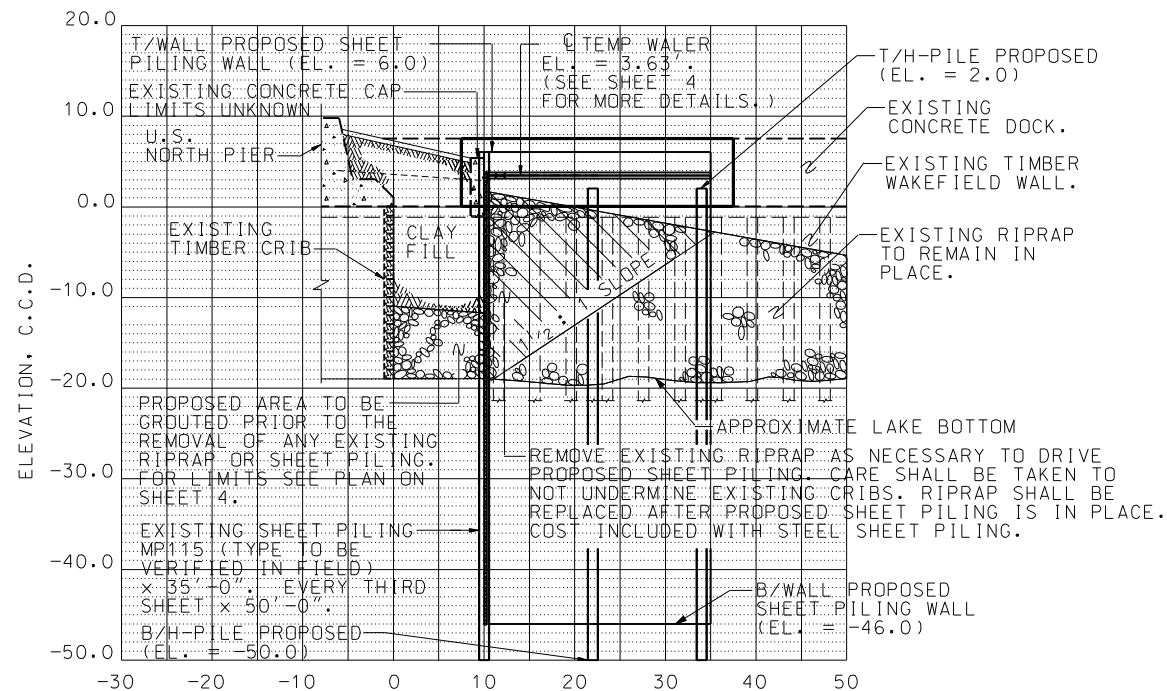


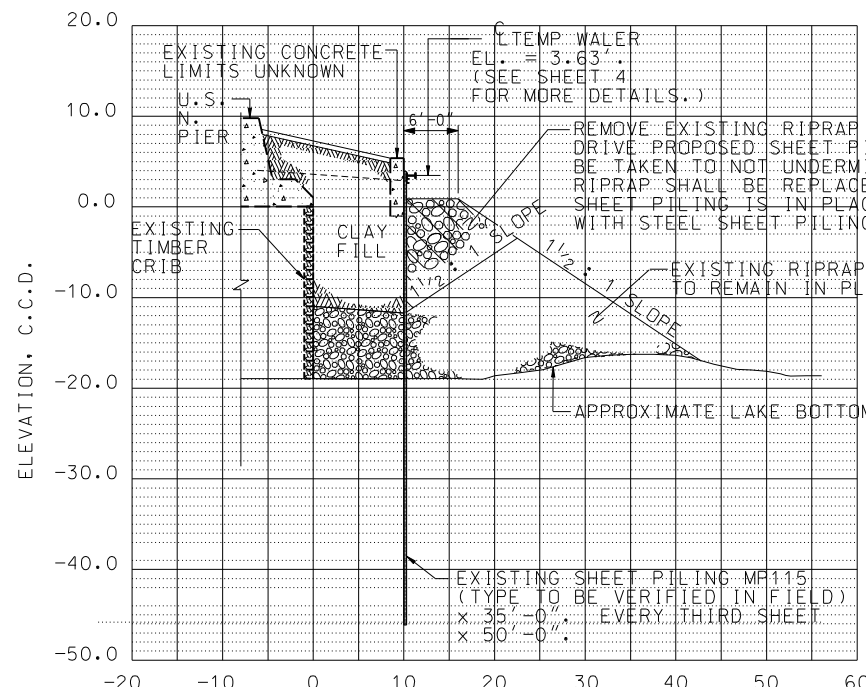
PLAN - LOCATION A

0 20'
SCALE IN FEET



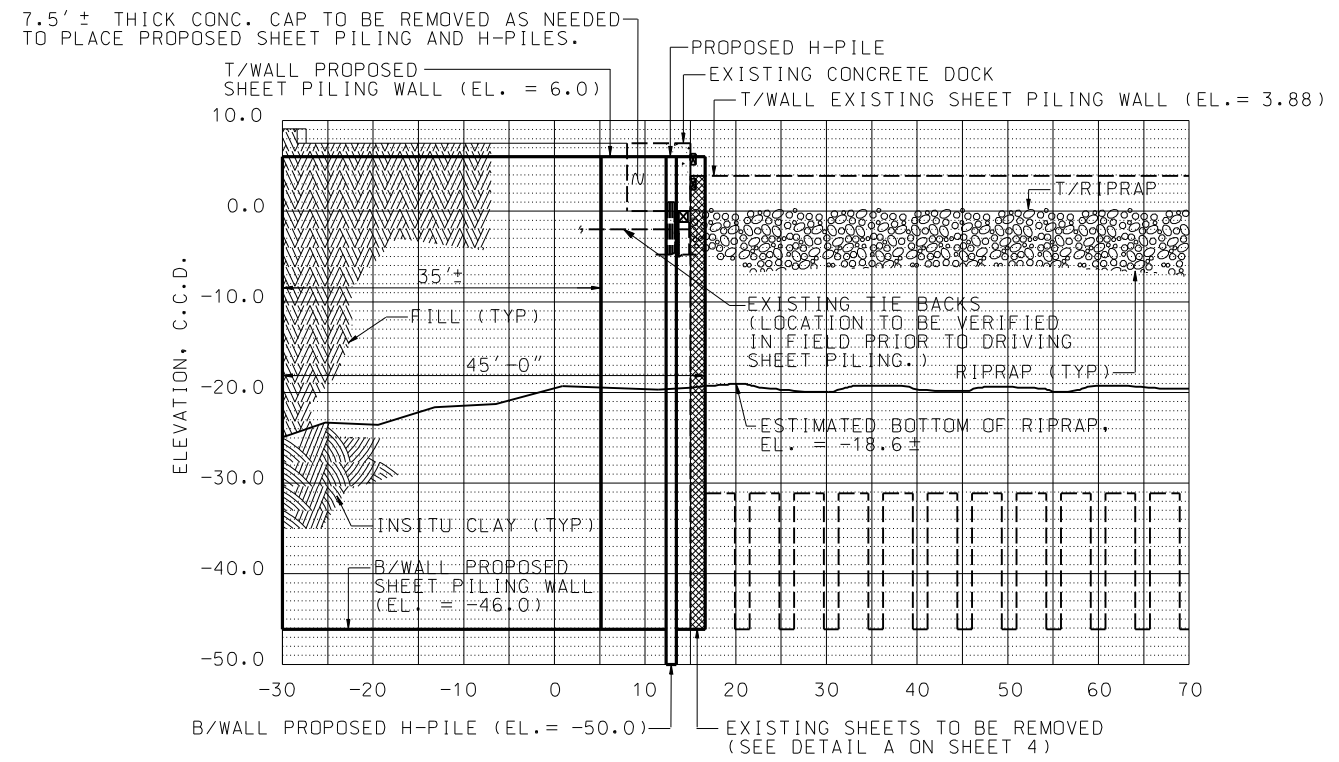
ELEVATION B-B

0 10'
SCALE IN FEET



ELEVATION C-C

0 10'
SCALE IN FEET



ELEVATION A-A

0 10'
SCALE IN FEET

H PILE DATA

TYPE: STEEL HP 14 X 73
NOMINAL REQUIRED BEARING: 291 KIPS
ALLOWABLE RESISTANCE AVAILABLE: 97 KIPS
EST. LENGTH: 52 FEET
NO. OF PRODUCTION PILES: 3
NO. OF TEST PILES: 0

BILL OF MATERIAL

ITEM	UNIT	QUANTITY
STEEL SHEET PILING	SQ FT	3,568
FURNISHING STEEL PILES HP 14x73, SPECIAL	FOOT	56
FURNISHING STEEL PILES HP 14x73	FOOT	104
TEMPORARY BRACING ASSEMBLY	L SUM	1
REMOVE AND REPLACE EXISTING MODULAR BLOCK RETAINING WALL	L SUM	1
ELECTRIC SERVICE RELOCATION	L SUM	1
SHEET PILING REMOVAL	SQ FT	164
DRIVING PILES	FOOT	160