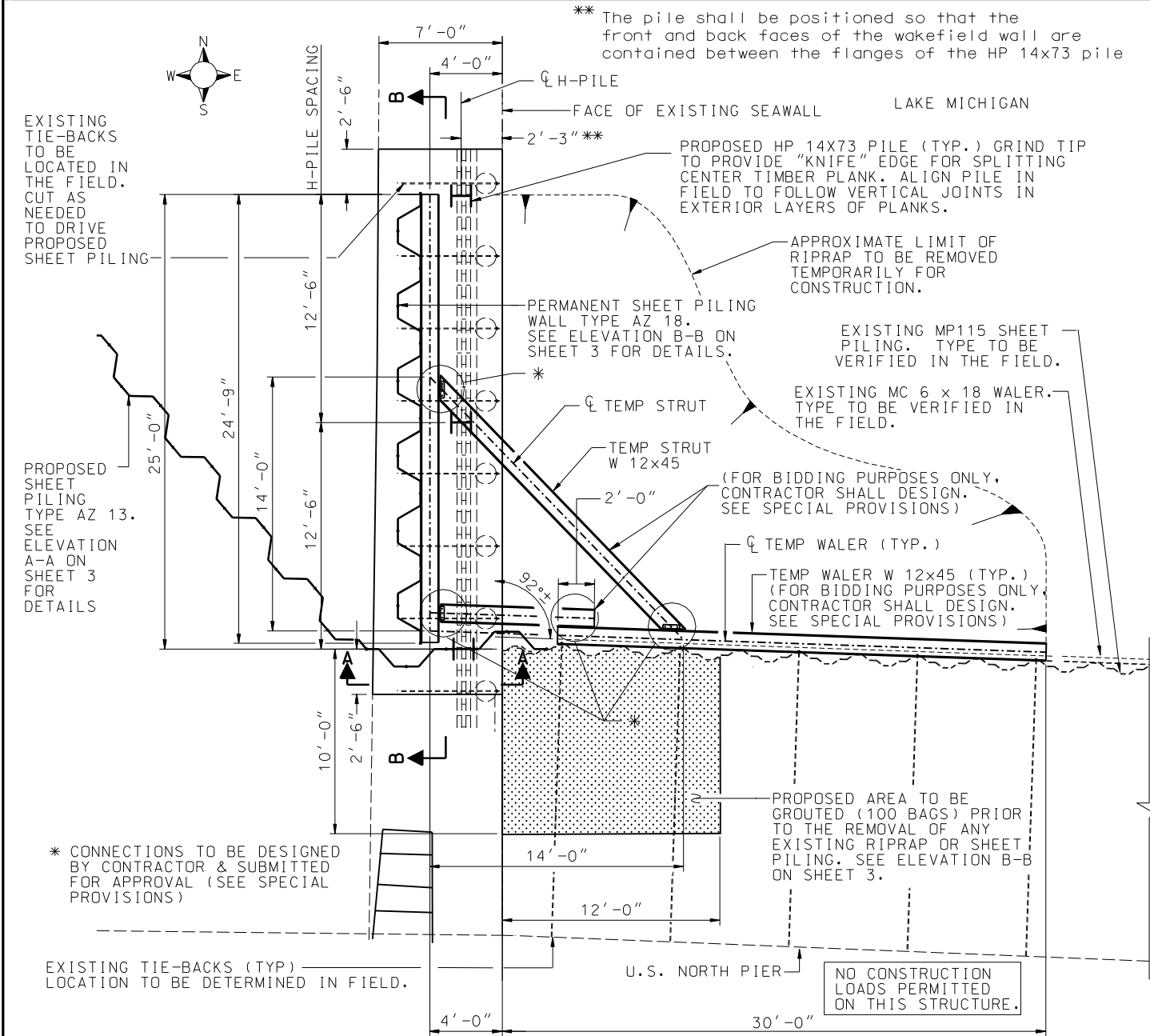
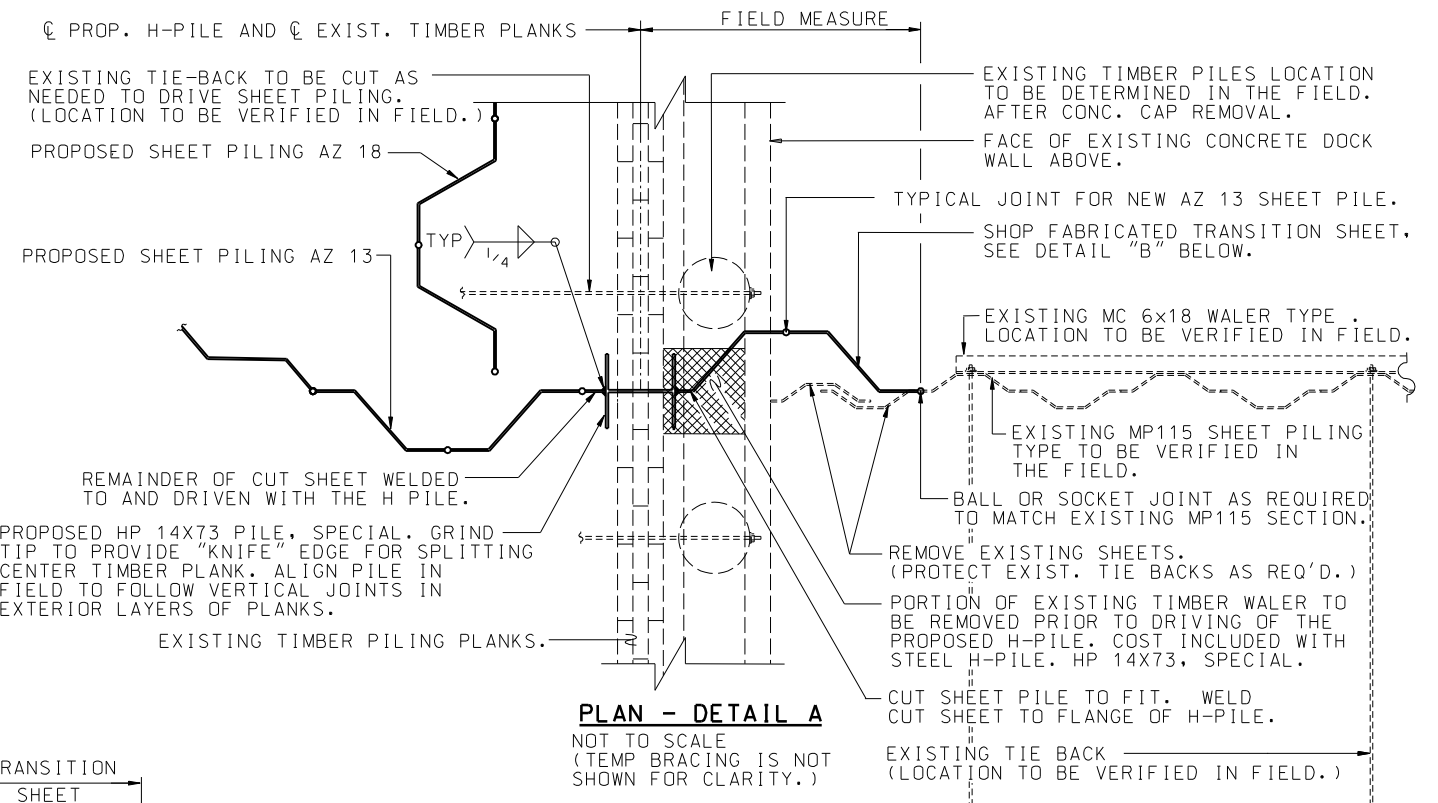


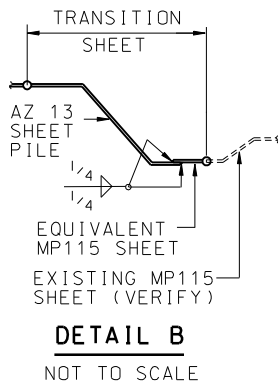
** The pile shall be positioned so that the front and back faces of the wakefield wall are contained between the flanges of the HP 14x73 pile



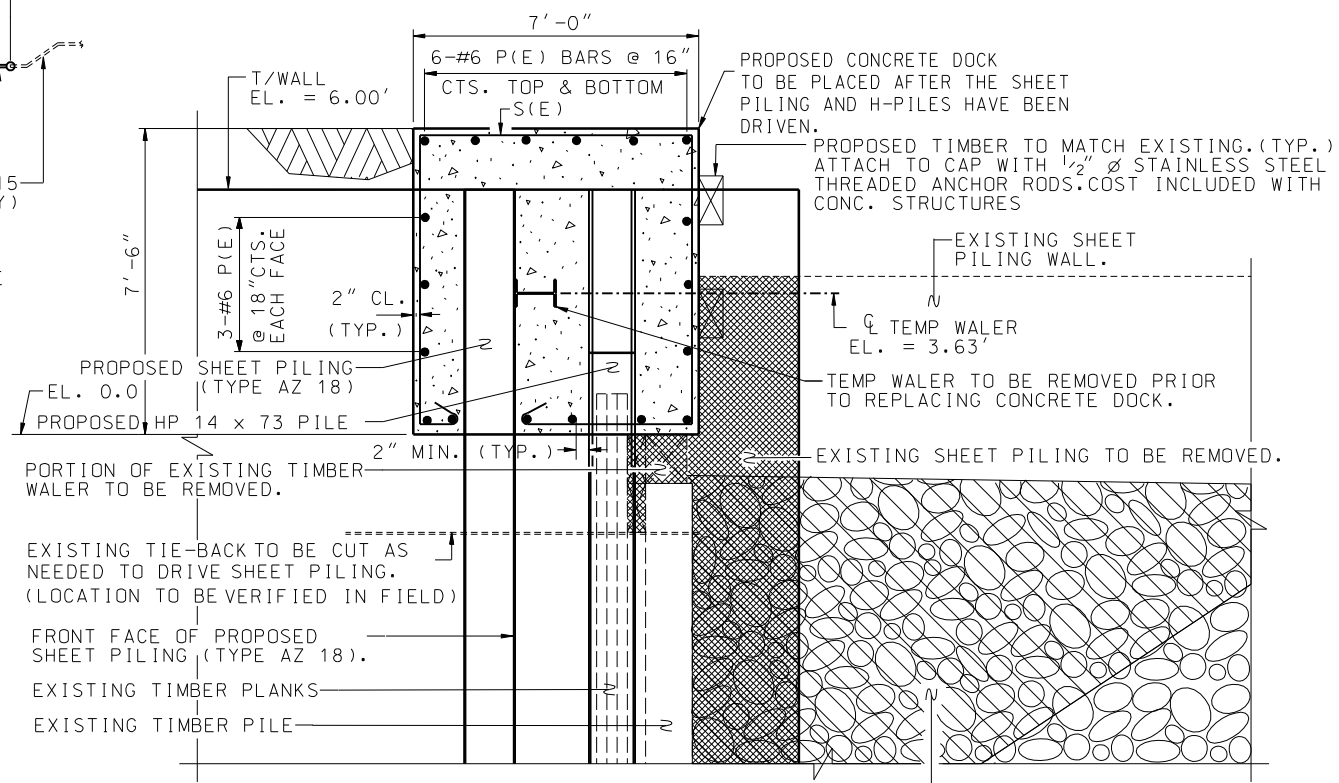
PLAN - LOCATION A
0 4' SCALE IN FEET



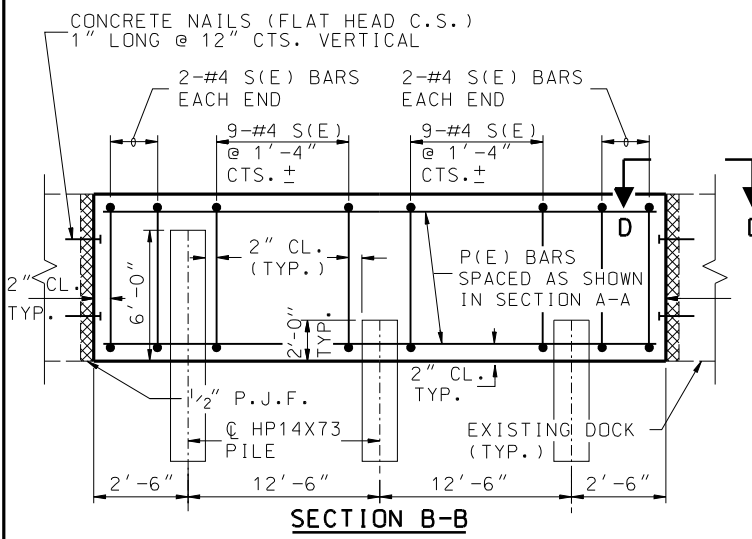
PLAN - DETAIL A
NOT TO SCALE
(TEMP BRACING IS NOT SHOWN FOR CLARITY.)



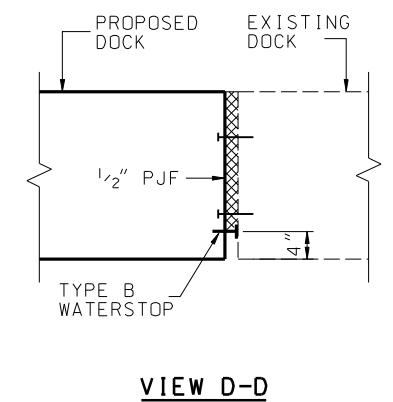
DETAIL B
NOT TO SCALE



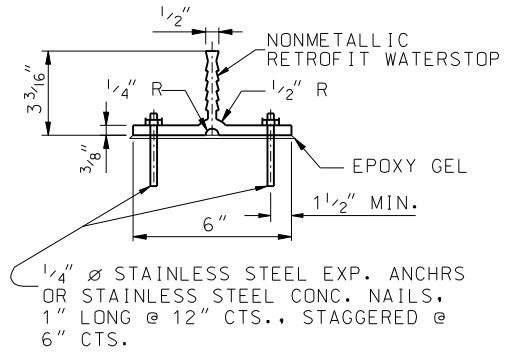
SECTION A-A
NOT TO SCALE



SECTION B-B

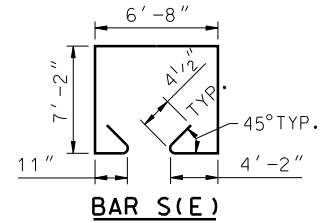


VIEW D-D



TYPE B WATERSTOP

EXISTING CONCRETE SURFACES IN CONTACT WITH WATERSTOP SHALL BE CLEANED BY SANDBLASTING OR GRINDING TO ASSURE A GOOD BOND. AN EPOXY GEL BONDING AGENT SHALL BE APPLIED PER THE MANUFACTURER'S INSTRUCTIONS. COST INCLUDED WITH CONCRETE STRUCTURES.



BAR S(E)

BILL OF MATERIAL

BAR	NO.	SIZE	LENGTH	SHAPE
P(E)	18	#6	29'-8"	—
S(E)	22	#4	26'-10"	□
CONCRETE STRUCTURES			CU YD	58.3
CONCRETE REMOVAL			CU YD	58.3
REINF. BARS, EPOXY COATED			LB.	1,200
PRESSURE GROUTING			BAGS	100

O:\Dwr\Proj\Projects\Lake Michigan Chicago River Leakage Control\Final Plans\Sheet_4_e_lcfma2.dgn
 3:41:52 PM
 1/25/2010
 Designed By: TMM Checked By: GMS
 Drawn By: JJF Checked By: TMM