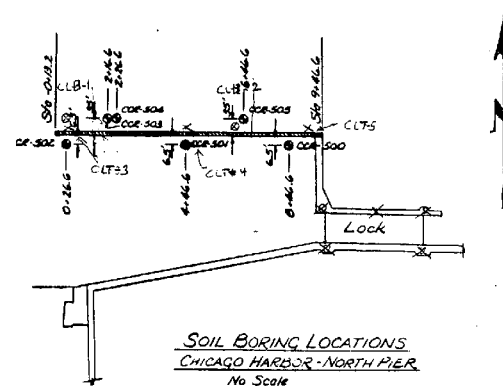
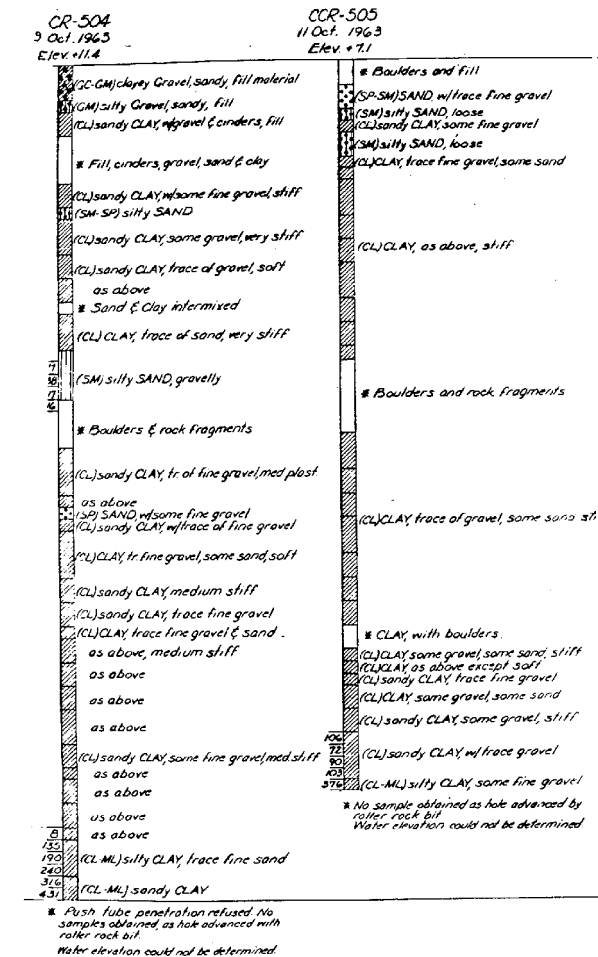
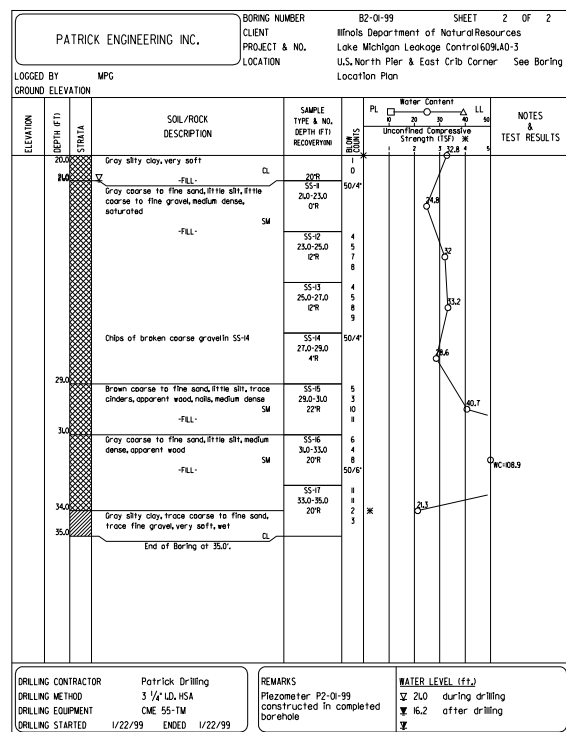
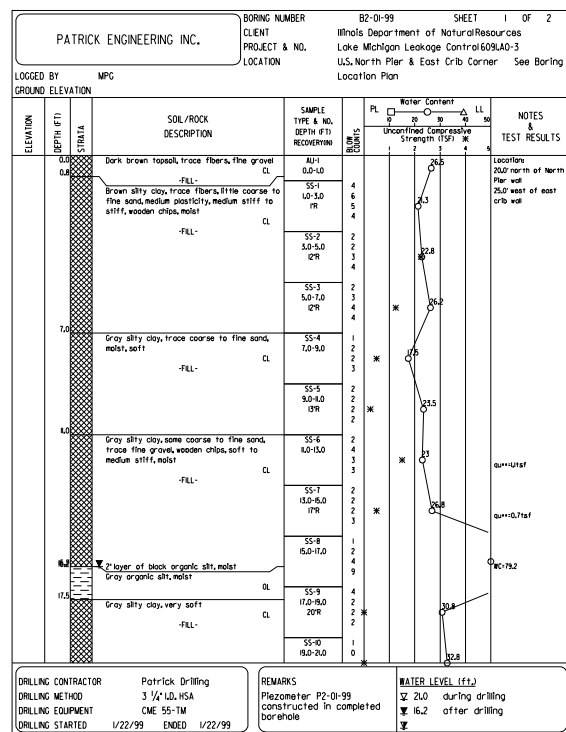
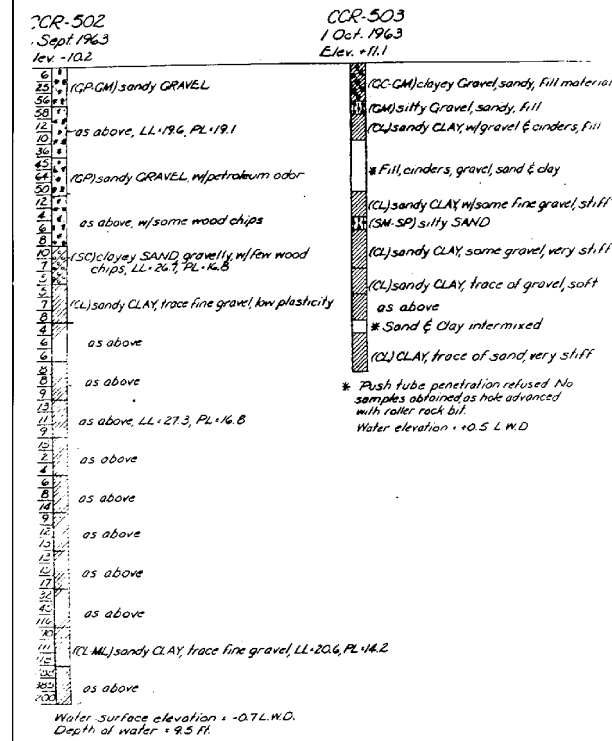
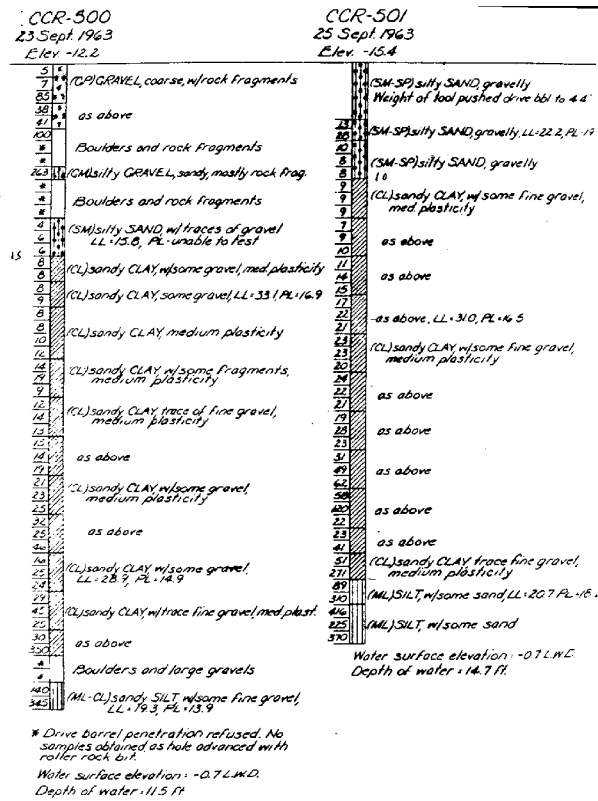
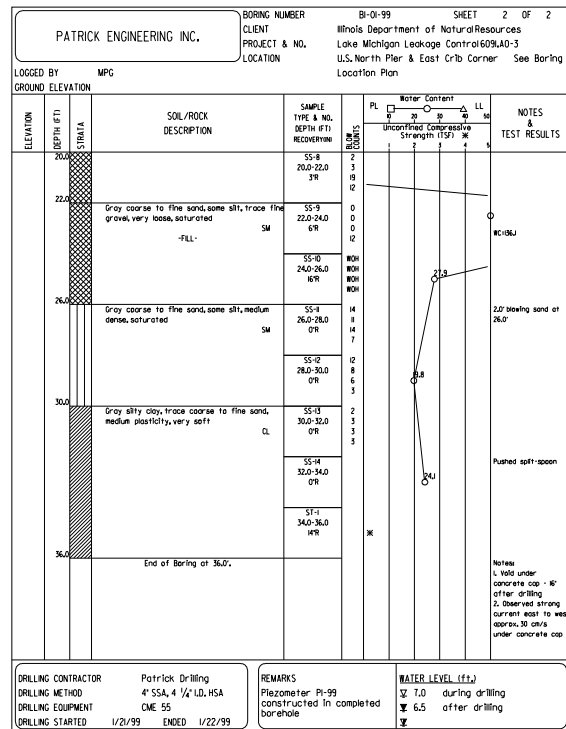
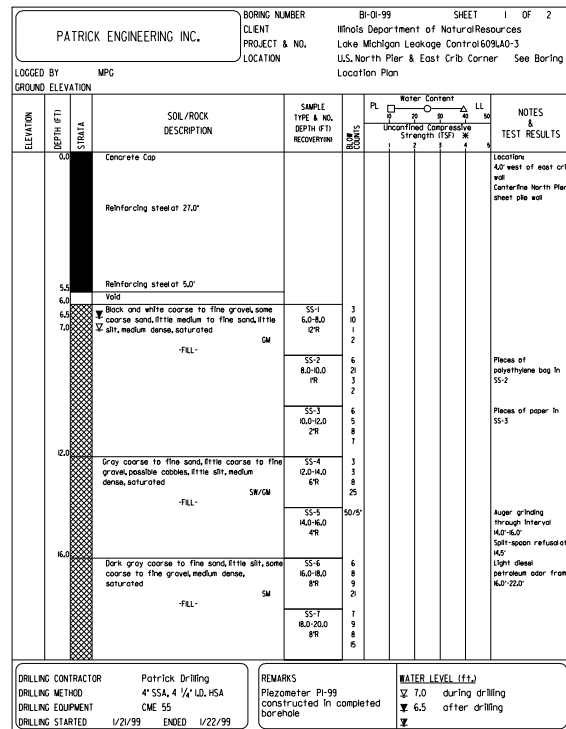


O:\DwnProj\proj\Lake Michigan Chicago River Leakage Control\Final Plans\Sheet 8 9 10_e_sibrgs.dgn

3:49:31 PM 1/25/2010

Designed By TMM Checked By JUF
Checked By TMM Checked By JUF



- LEGEND**
- LL - Liquid Limit
 - PL - Plastic Limit
 - (GP) Poorly graded gravels or gravel-sand mixtures, little or no fines
 - (GC) Clayey gravels, gravel-sand mixtures
 - (GM) Silty gravels, gravel-sand-silt mixtures
 - (SP) Poorly graded sands or gravelly sands, little or no fines
 - (SC) Clayey sand, sand-clay mixture
 - (SM) Silty SAND, sand-silt mixture
 - (ML) Inorganic silts and very fine sands, rock lumps, silt or clayey fine sands, or clayey silt with slight plasticity
 - (CL) Inorganic clays of low to medium plasticity, gravel, cobbles, sandy clays, silty clays, lean clays

- NOTES**
1. All soil classifications are in accordance with the Unified Soil Classification System as contained in Technical Memorandum No. 3-357 dated March 1963.
 2. All borings were drilled in Sept and Oct. 1963 by Corps of Engineers personnel. Locations and elevations were also determined by surveys by Corps of Engineers personnel.
 3. Numbers at left of borings represent drive sample blows per foot obtained with 2 1/2" O.D. drive barrel driven with 370 lb. hammer falling 1.7 ft.
 4. Undisturbed samples were obtained from borings CCR-503, 504, and 505 with 3 and 5 inch Shelby tubes and a 5 inch piston sampler.
 5. All elevations are referred to Low Water Datum for Lake Michigan which is 576.871 above Mean Water Level at Father Point, Quebec, International Great Lakes Datum (IGL D 1985).

| REVISION | DATE | DESCRIPTION | BY |
|----------|------|-------------|----|
| | | | |

U.S. ARMY ENGINEER DISTRICT
CORPS OF ENGINEERS
CHICAGO, ILLINOIS

CHICAGO HARBOR
CHICAGO, ILLINOIS
REHABILITATION OF NORTH PIER &
ADDITION OF PARAPET ON SHORE ARM
EXTENSION OF BREAKWATER
LOGS OF SOIL BORINGS

DATE: 18 DECEMBER 1963
SCALE: AS SHOWN
FILE NO. 50-86
6