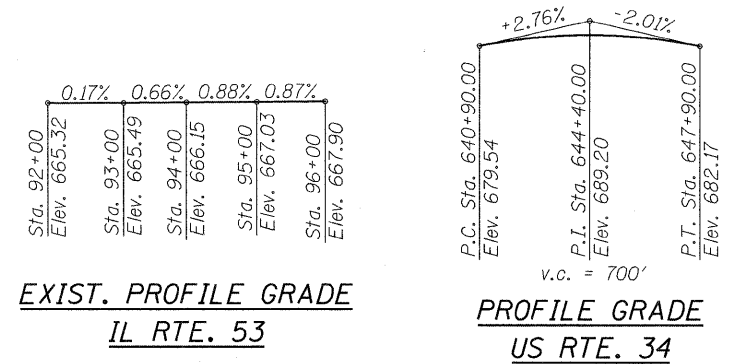
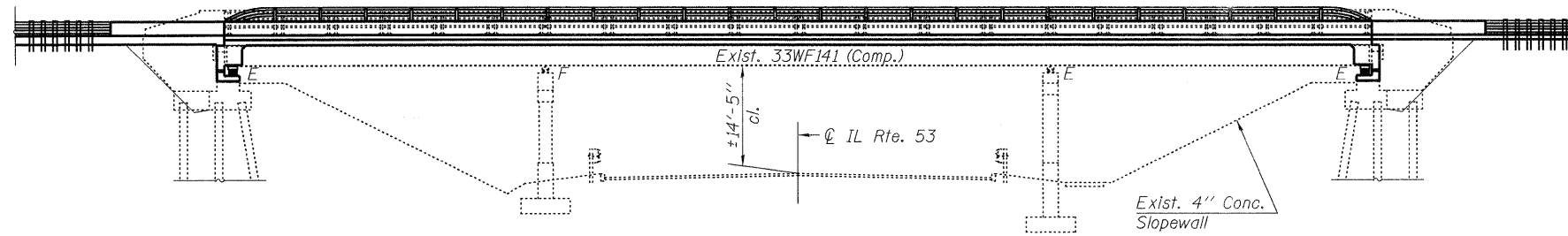


Benchmark: Square cut in W. end of Concrete Wingwall, N.W. corner of Rt. 34 bridge over Rt. 53. Elev. 685.16.

Existing Structure: S.N. 022-0033 built in 1960 as F.A.P. Route 311, Section 10-HB at Station 644+95.23. The superstructure consists of a R.C. deck 153'-4" back to back abutments by 71'-8" wide supported on three-span continuous steel wide flange beams, on stub abutments and multi-column piers. Traffic shall be maintained utilizing stage construction.

Existing Protective Shield and Bridge Railing to be Salvaged. See General Notes.

STATE OF ILLINOIS
DEPARTMENT OF TRANSPORTATION



ELEVATION

DESIGN SPECIFICATIONS

2002 AASHTO (17th Ed.)

LOADING HS20-44

Allow 50 #/Sq.Ft. for future wearing surface.

SEISMIC DATA

Seismic performance category (S.P.C.) = A
Bedrock acceleration coefficient (A) = .04g
Site coefficient (s) = 1.0

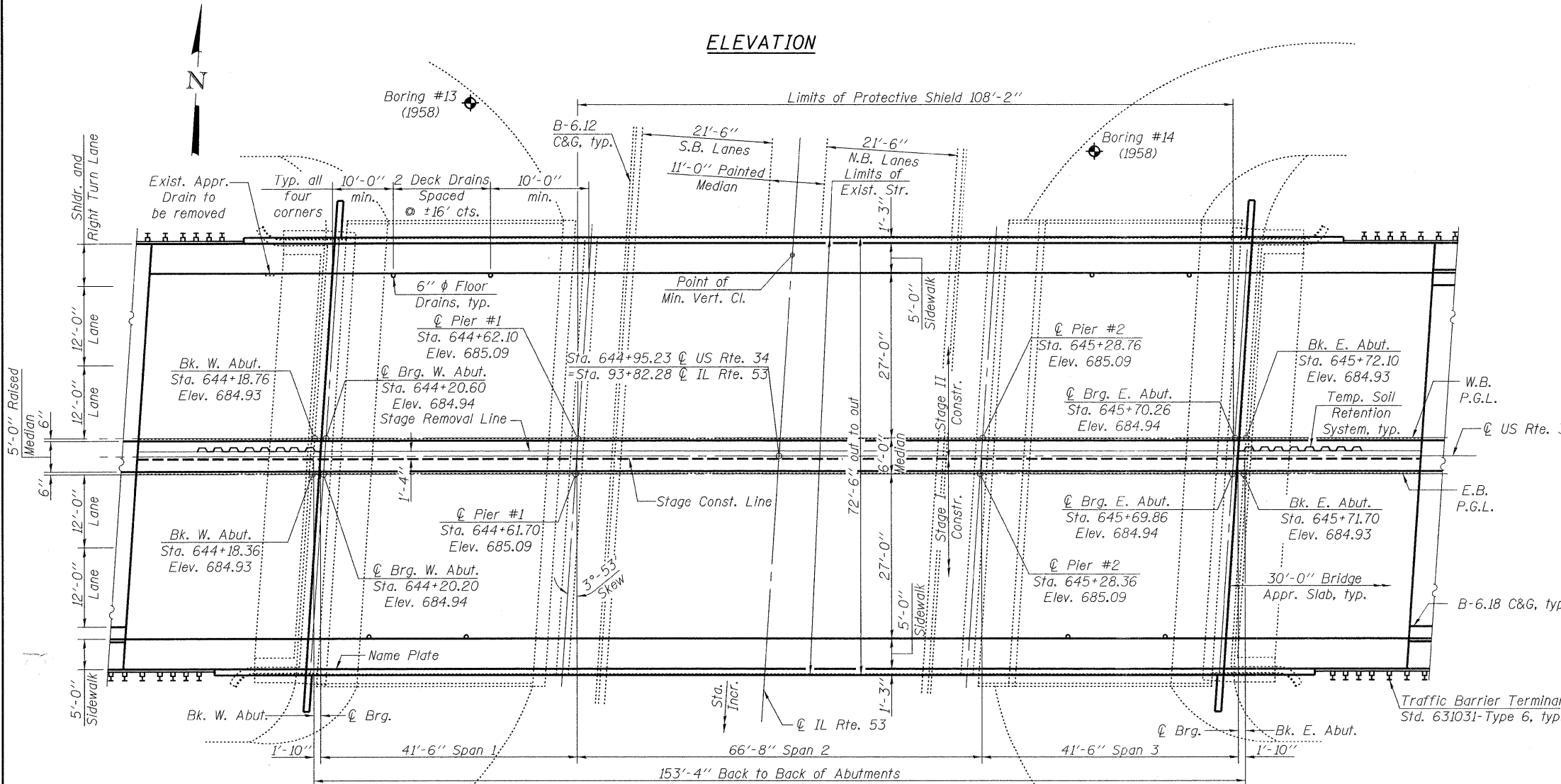
DESIGN STRESSES

NEW FIELD UNITS

$f_c = 3,500$ psi
 $f_y = 60,000$ psi (Reinf.)
 $f_y = 36,000$ psi (M270 Grade 36)

EXISTING CONSTRUCTION

$f_c = 1,400$ psi
 $f_s = 20,000$ psi (Reinf.)
 $f_s = 18,000$ psi



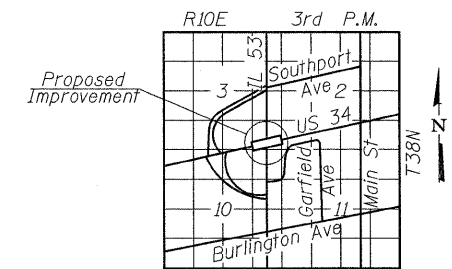
PLAN

STATION 644+95.23
REBUILT 20 BY
STATE OF ILLINOIS
F.A.P. RT. 311 SEC 10HB-R
LOADING HS-20
STRUCTURE NO. 022-0033

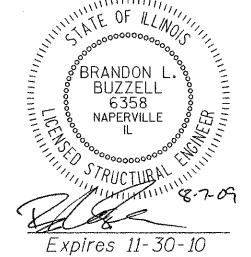
NAME PLATE

See Std. 515001

Existing Name Plate shall be cleaned and relocated next to new Name Plate. Cost included with Name Plates.



LOCATION SKETCH



APPROVED
FOR STRUCTURAL ADEQUACY ONLY

Robert E. Anderson (TND)
ENGINEER OF BRIDGES AND STRUCTURES

GENERAL PLAN AND ELEVATION
US RTE. 34 OVER IL RTE. 53
FAP 311, SECTION 10HB-R
DUPAGE COUNTY
STATION 644+95.23
STRUCTURE NO. 022-0033

DESIGNED	JMT
CHECKED	BLB
DRAWN	JMT
CHECKED	BLB

rjngroup
Excellence through Ownership
200 West Front Street
Wheaton, IL 60187

SHEET NO. 1 27 SHEETS	F.A.P. RTE. 311	SECTION 10HB-R	COUNTY Du Page	TOTAL SHEETS 53	SHEET NO. 17
	CONTRACT NO. 60B92			FED. ROAD DIST. NO. ILLINOIS FED. AID PROJECT	