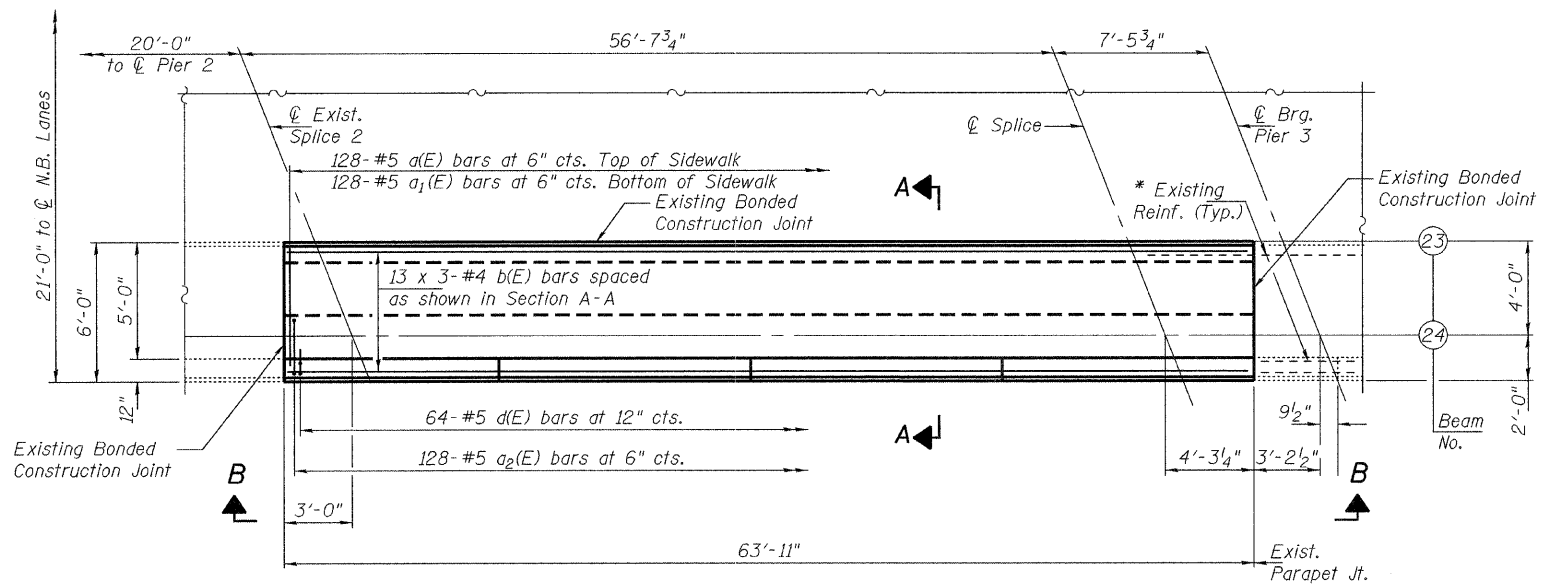


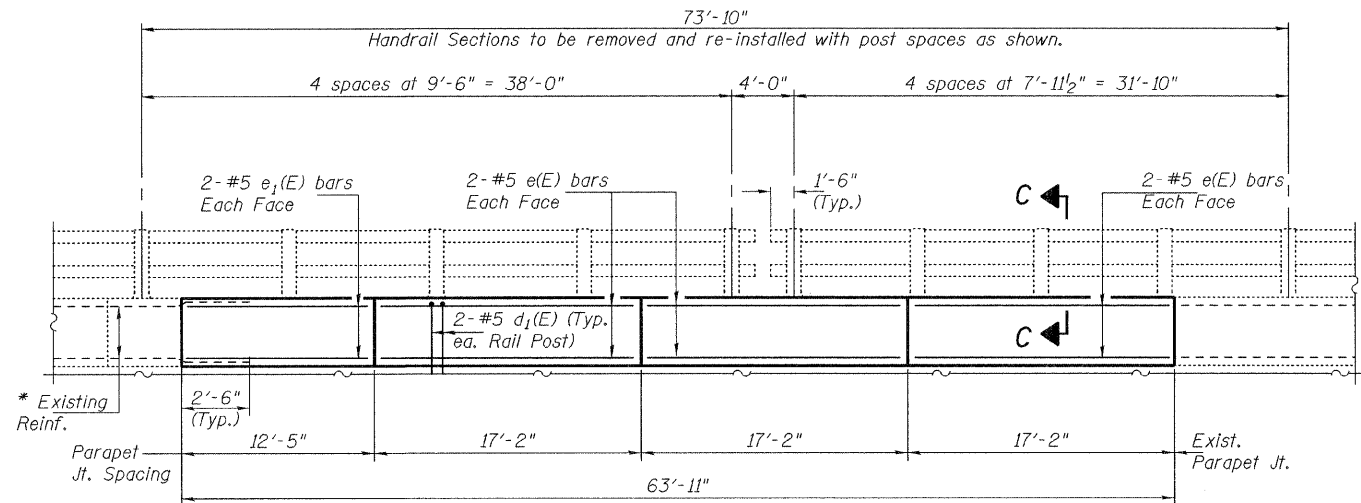
STATE OF ILLINOIS  
DEPARTMENT OF TRANSPORTATION



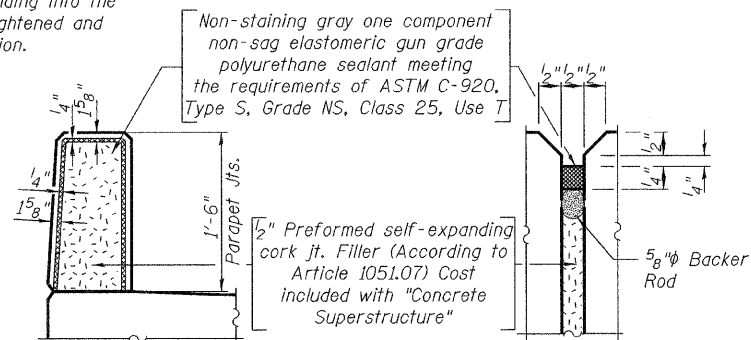
**PARTIAL PLAN  
CONCRETE REMOVAL & REPLACEMENT**

Perimeters of concrete removal areas shall be saw cut 3/4" prior to the removal of concrete. Existing reinforcement shall be cut only if required for fitting bolts. Cut reinforcement shall be spliced as directed by the Engineer. Cost shall be included in the cost of "Concrete Superstructure".

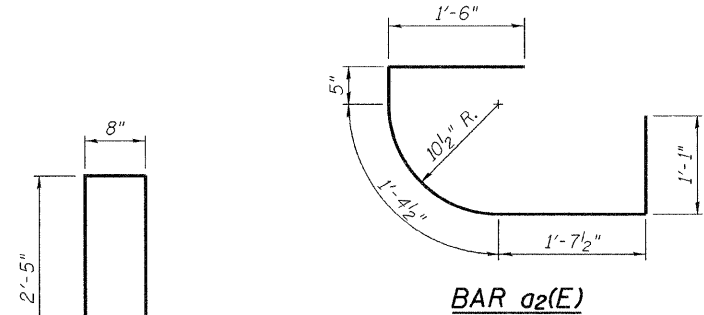
\* Existing reinforcement bars extending into the removal area shall be cleaned, straightened and incorporated into the new construction.



**VIEW B-B**



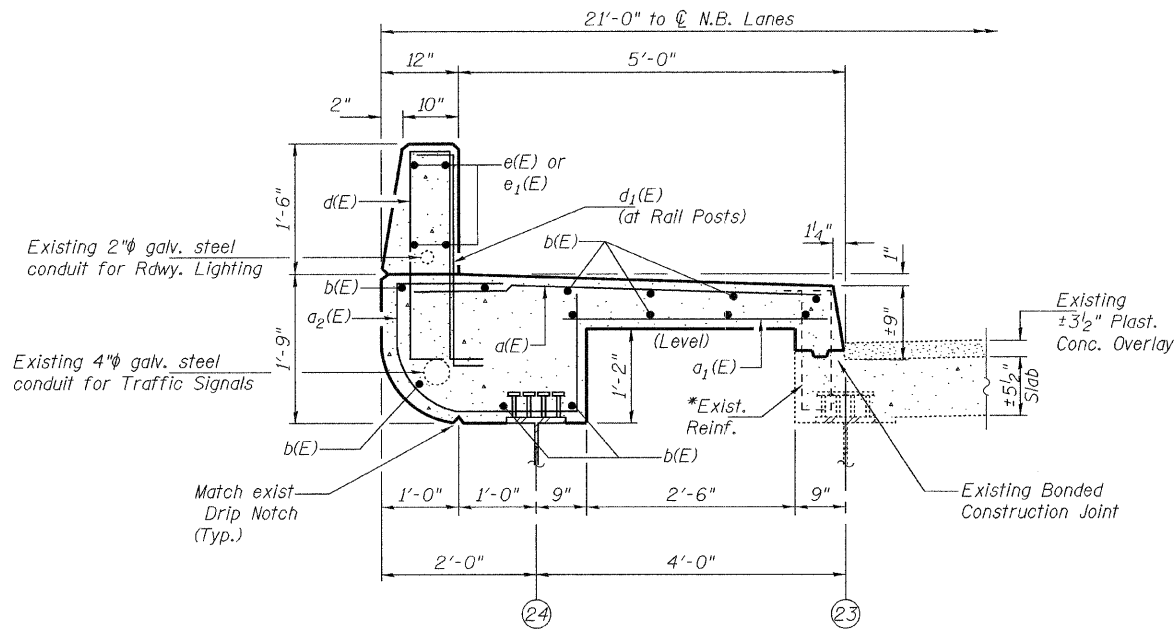
**SECTION AT PARAPET**



**BILL OF MATERIAL**

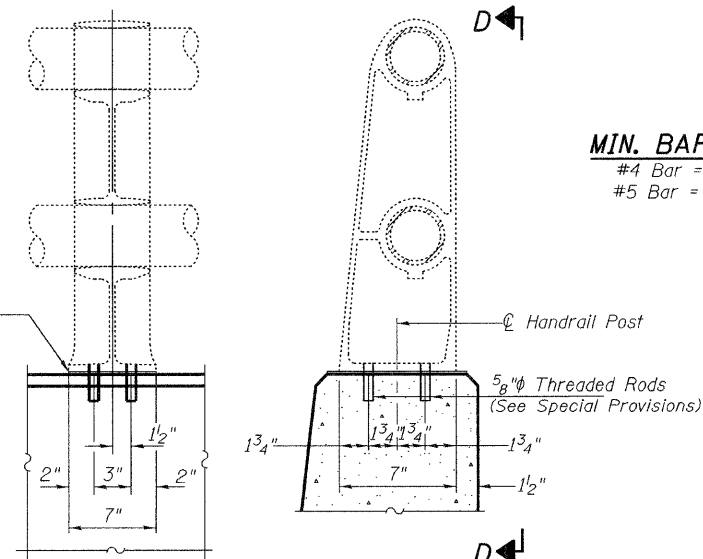
Bar	No.	Size	Length	Shape
a(E)	128	#5	5'-9"	—
a1(E)	128	#5	4'-6"	—
a2(E)	128	#5	6'-0"	U
b(E)	39	#4	22'-4"	—
d(E)	64	#5	6'-6"	—
d1(E)	16	#5	3'-6"	—
e(E)	12	#5	16'-10"	—
e1(E)	4	#5	12'-1"	—
Concrete Removal			Cu. Yd.	18.5
Concrete Superstructure			Cu. Yd.	18.5
Reinforcement Bars, Epoxy Coated			Lbs.	3,500

Reinforcement bars designated (E) shall be epoxy coated.  
Bars indicated thus 13 x 3-#4 etc. indicates 13 lines of bars with 3 lengths per line.



**SECTION A-A**

1/8" Prefabricated Pad  
Cost shall be included in the cost of "Removing & Re-erecting Existing Railing".



**VIEW D-D**

**SECTION C-C**

**HANDRAIL POST DETAILS**

**MIN. BAR LAPS**

#4 Bar = 1'-8"  
#5 Bar = 2'-2"

DESIGNED	A.T.H.
CHECKED	G.G.E.
DRAWN	Drew Christopher
CHECKED	A.T.H. G.G.E.

EXAMINED	January 22, 2010
PASSED	Carl Krueger ENGINEER OF STRUCTURAL SERVICES
	Ralph E. Anderson ENGINEER OF BRIDGES AND STRUCTURES

**SIDEWALK DETAILS  
SN 016-0316**

SHEET NO. 3 5 SHEETS	F.A.I. RTE.	SECTION	COUNTY	TOTAL SHEETS	SHEET NO.
	55	2009-070BR	Cook	17	6
FED. ROAD DIST. NO.		ILLINOIS FED. AID PROJECT		CONTRACT NO. 60H78	