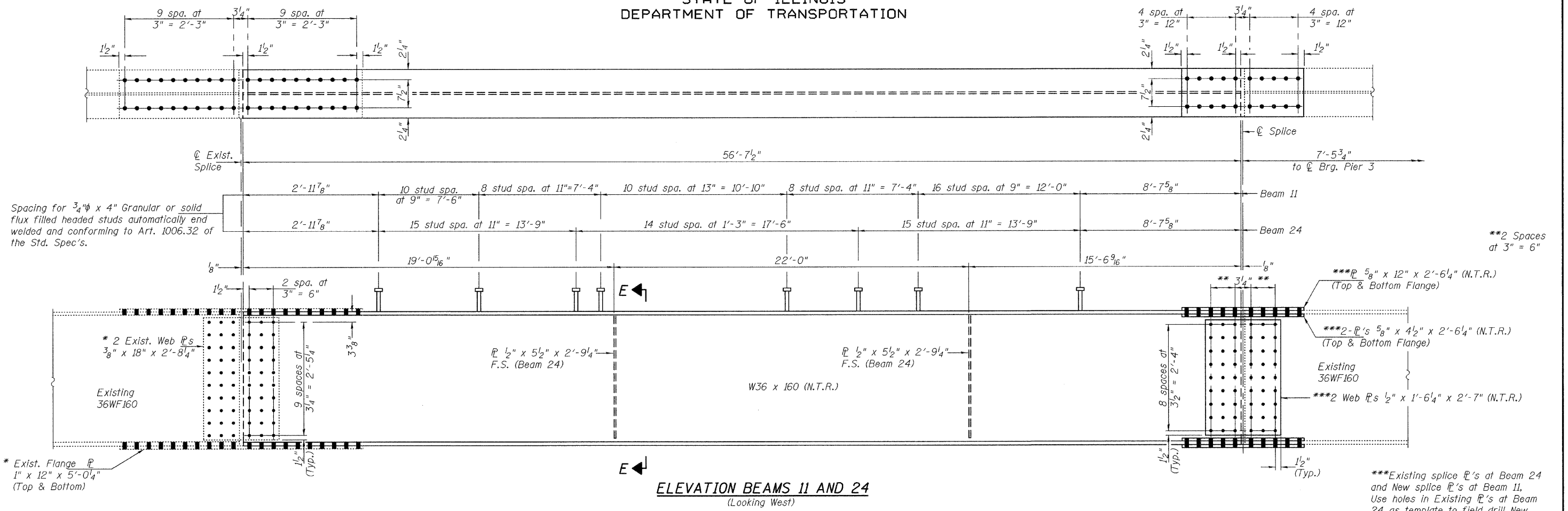


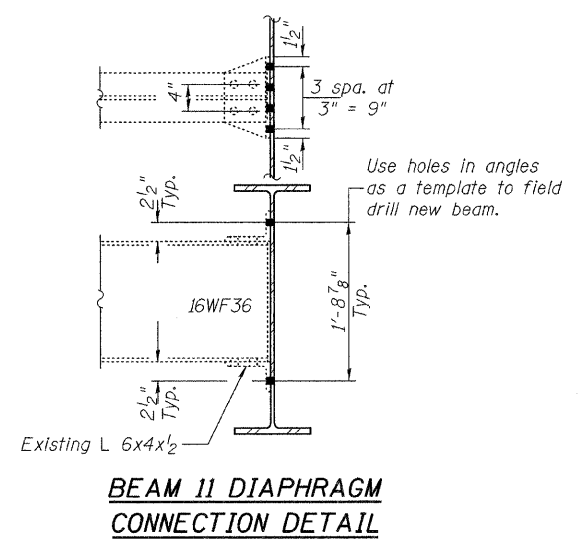
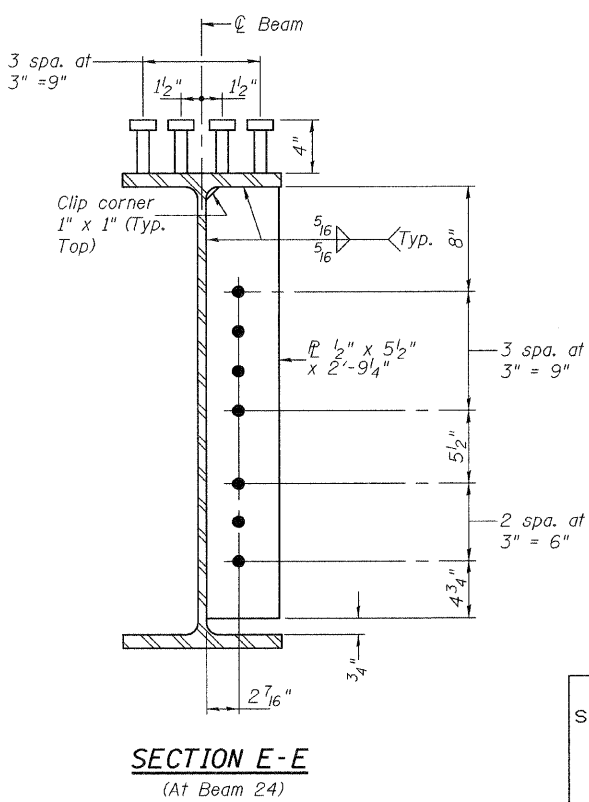
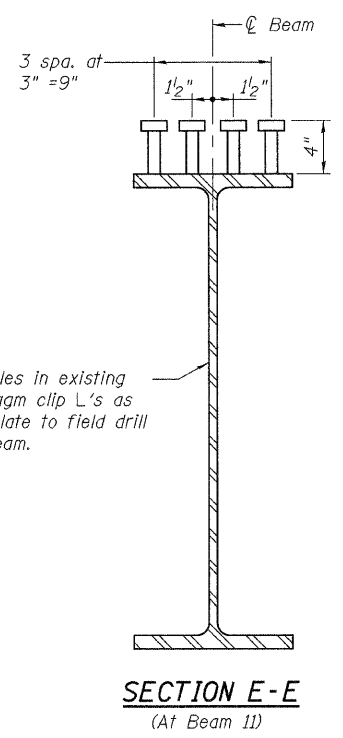
STATE OF ILLINOIS  
DEPARTMENT OF TRANSPORTATION



**ELEVATION BEAMS 11 AND 24**  
(Looking West)

\* Exist. rebar's to be matched marked, removed and reused. Use holes in existing rebar's as a template to field drill new beam.

Notes:  
Natural camber of new beam shall be placed upward for fabrication.  
Fasteners shall be high strength bolts. Flange splice holes shall be  $\frac{15}{16}$ "  $\phi$  for  $\frac{7}{8}$ "  $\phi$  bolts. Web splice holes shall be  $\frac{13}{16}$ "  $\phi$  for  $\frac{3}{4}$ "  $\phi$  bolts.  
Diaphragm connection holes shall be  $\frac{15}{16}$ "  $\phi$  for  $\frac{3}{4}$ "  $\phi$  bolts. Two hardened washers shall be required at diaphragm connections.



DESIGNED	A.T.H.
CHECKED	G.G.E.
DRAWN	Drew Christopher
CHECKED	A.T.H. G.G.E.

January 22, 2010  
EXAMINED *Carl Henry*  
ENGINEER OF STRUCTURAL SERVICES  
PASSED *Ralph E. Anderson*  
ENGINEER OF BRIDGES AND STRUCTURES

SHEET NO. 5 5 SHEETS	F.A.I. RTE. 55	SECTION 2009-070BR	COUNTY Cook	TOTAL SHEETS 17	SHEET NO. 8
	FED. ROAD DIST. NO.	ILLINOIS FED. AID PROJECT	CONTRACT NO. 60H78		

DETAILS  
SN 016-0316