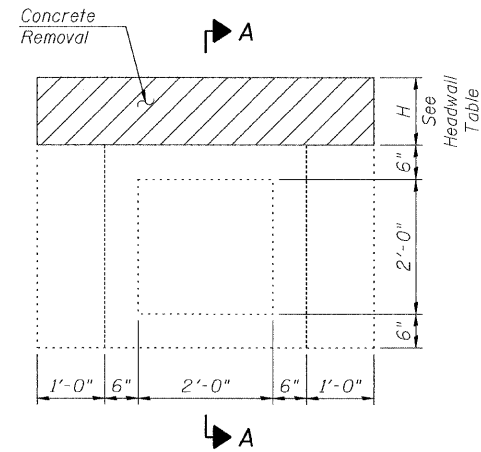


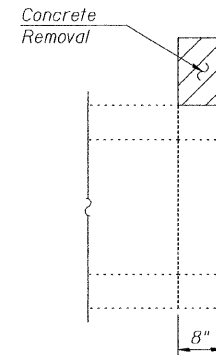
STATE OF ILLINOIS
DEPARTMENT OF TRANSPORTATION

DIMENSIONS AND QUANTITIES
HEADWALL

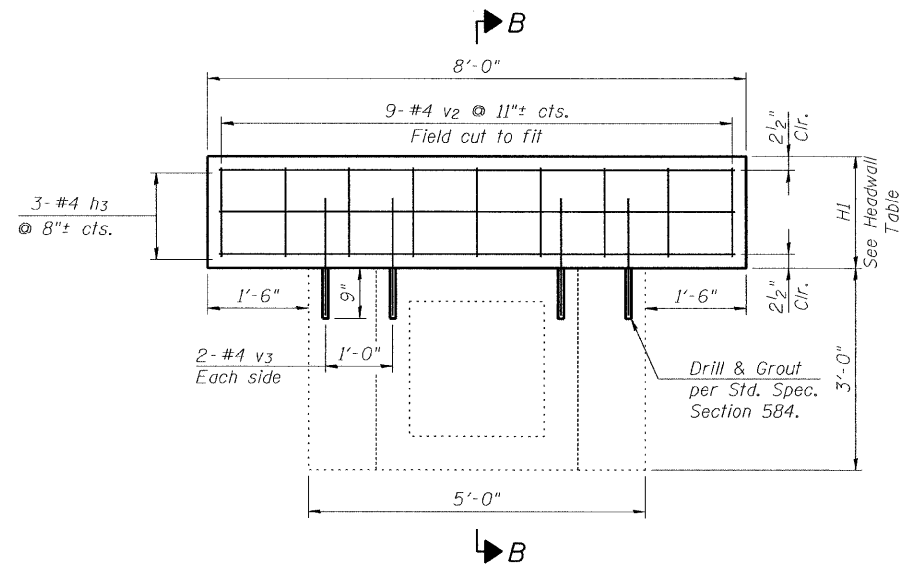
Location	Dimension 'H'	Dimension 'H1'	Concrete Removal Cu. Yd.	Concrete Structures Cu. Yd.	Reinf. Bars Pound
5L	1'-0"	1'-11"	0.2	0.4	29
5R	1'-0"	1'-9"	0.2	0.4	29
14L	0'-9 ³ / ₈ "	1'-3 ¹ / ₄ "	0.1	0.3	29
14R	1'-0"	1'-4 ¹ / ₄ "	0.2	0.3	29
15L	1'-1"	1'-8"	0.2	0.4	29
15R	1'-2"	1'-8"	0.2	0.4	29



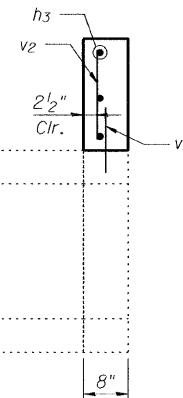
CONCRETE REMOVAL
ELEVATION



SECTION A-A



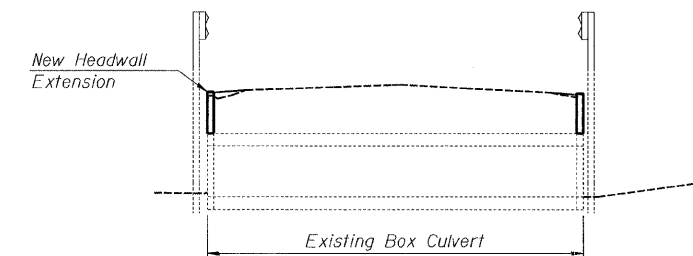
CONCRETE HEADWALL
ELEVATION



SECTION B-B

REINFORCEMENT BARS
FOR ONE HEADWALL

Bar	No.	Size	Length	Shape
v2	9	#4	1'-6"	—
v3	4	#4	1'-9"	—
h3	3	#4	7'-7"	—



TYPICAL CROSS SECTION

NOTES

1. The Headwall shall be constructed entirely of CLASS SI CONCRETE and in accordance with the applicable portions of Section 503 of the Standard Specifications. Reinforcement Bars shall conform to Section 508.
2. The cost of removal and disposal of any existing timber headwalls and any excavation required to construct the headwall extensions shall be included in Concrete Structures.

GRAEF	11-6-2009
DESIGNED	E.E.J.
CHECKED	J.A.Z.
DRAWN	E.E.J.
CHECKED	J.A.Z.

CULVERT HEADWALL EXTENSION

F.A.P. RTE.	SECTION	COUNTY	TOTAL SHEETS	SHEET NO.
*	2009-092GRR	WILL	18	13
* VARIOUS			CONTRACT NO. 60145	
ILLINOIS FED. AID PROJECT				