

F.A. RTE.	SECTION	COUNTY	TOTAL SHEETS	SHEET NO.
	01-P4019-05-BT	COOK	23	1

INDEX OF SHEETS

- 1 TITLE
- 2 STANDARDS, GENERAL NOTES, AND APPLICATION RATES
- 3 QUANTITIES
- 4 TYPICAL SECTIONS
- 5 SCHEDULES
- 5A DETOUR ROUTE
- 6-12 PLAN AND PROFILE
- 13-23 CROSS SECTIONS
- 24-26 STANDARD DRAWINGS

STATE OF ILLINOIS

SURFACE TRANSPORTATION / ENHANCEMENT PROGRAM

PROPOSED BIKE PATH IMPROVEMENT

ROUTE: MARQUETTE DRIVE

LIMITS: STONY ISLAND AVENUE TO RICHARDS DRIVE

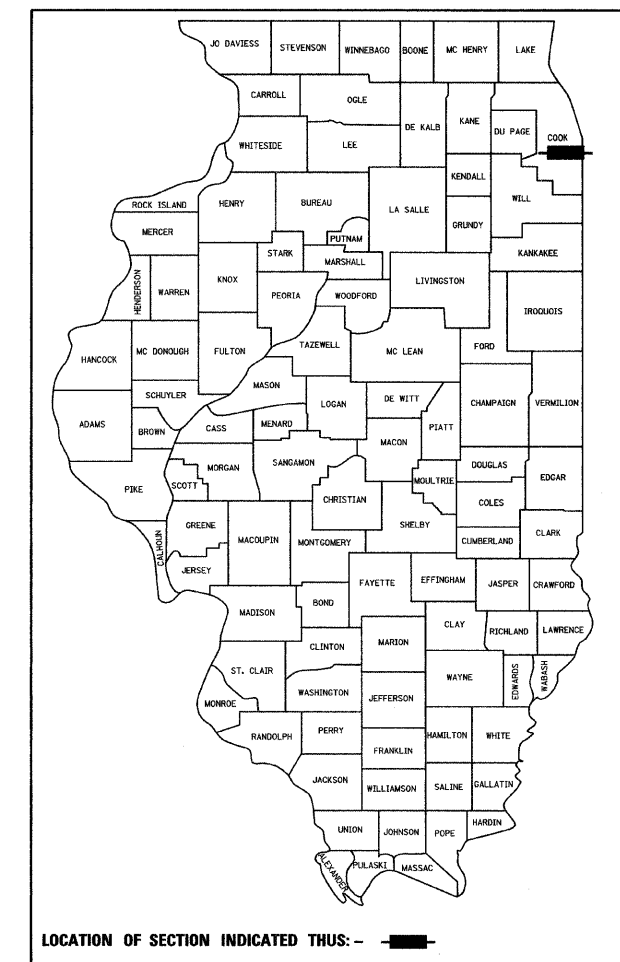
SECTION: 01 - P4019 - 05 - BT

FEDERAL PROJECT: TE - 00D1 (622)

STATE JOB NO.: C - 91 - 206 - 02

CITY OF CHICAGO

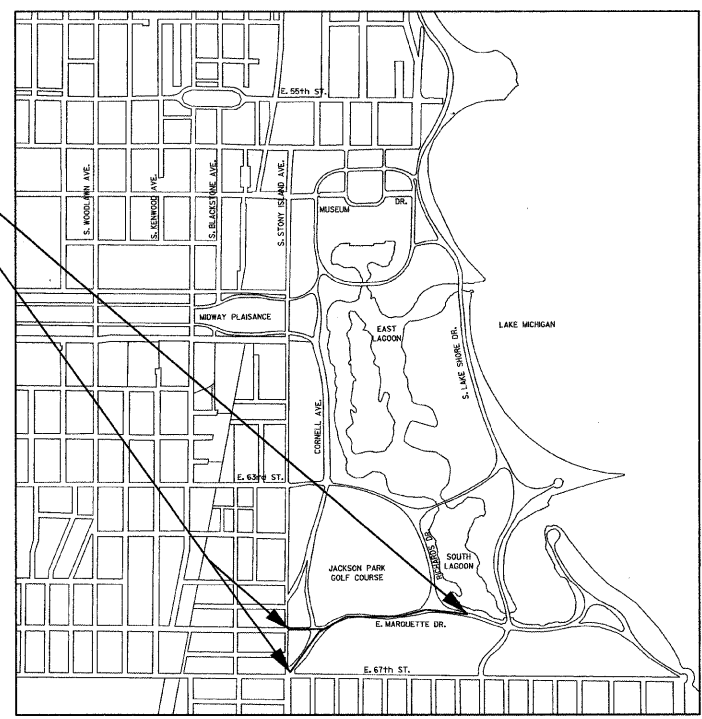
COUNTY: COOK



LEGEND

TRANSPORTATION SURFACE	EDGE OF PAVEMENT	---
RAILROAD	BACK OF CURB	---
ABANDONED RAILROAD	FENCE	-x-x-x-x-
GUARD RAIL	ELECTRIC	E
GUARD POST	WATER	W
SINGLE POST SIGN	GAS	G
POWER LINE	SANITARY SEWER	--->
TELEPHONE OR TELEGRAPH	TRAFFIC SIGNAL CONTROLLER	⊙
LIGHT STANDARD	VEGETATION OUTLINE	(Cloud-like shape)
TRAFFIC SIGNAL	SINGLE TREE OR BUSH	⊙
FIRE HYDRANT	STUMP	⊙
MANHOLE	FENCE	- - - - -
INLET	BUILDINGS	[C]
CULVERT	MAILBOX	P
DISAPPEARING CULVERT		
DITCH CHECK		
DITCH-STREAM-SHORELINE		
DISAPPEARING DITCH		
MARSH		
RIGHT OF WAY MARKER		⊠
ABOVE GROUND SPLICE BOX		⊠
HANDHOLE		⊠
LOCATED OBJECT		⊠
TRAFFIC SIGNAL CONTROLLER		⊠

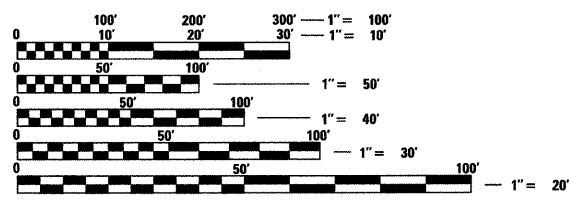
PROJECT LIMITS



LOCATION MAP

NET LENGTH OF IMPROVEMENT: 0.43 MI
 GROSS LENGTH OF IMPROVEMENT: 0.43 MI

PROJECT LOCATED IN THE CITY OF CHICAGO

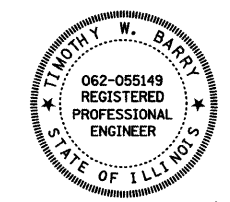


FULL SIZE PLANS HAVE BEEN PREPARED USING STANDARD ENGINEERING SCALES. REDUCED SIZED PLANS WILL NOT CONFORM TO STANDARD SCALES. IN MAKING MEASUREMENTS ON REDUCED PLANS, THE ABOVE SCALES MAY BE USED.

J.U.L.I.E.
 JOINT UTILITY LOCATION INFORMATION FOR EXCAVATION
 1-800-892-0123

CONTRACT NO. 63184

FIELD ENGINEER: CLAUDE MALIK (312) 742-4660



SIGNED: *Timothy W. Barry*
 DATE: 10/15/09
 EXPIRES: 11/30/09

JACOBS

STATE OF ILLINOIS DEPARTMENT OF TRANSPORTATION DIVISION OF HIGHWAYS	
APPROVED	<i>[Signature]</i> 10-16-09 Chicago Park District, Project MGR, Local Agency, Position
PASSED	DECEMBER 11, 2009 <i>[Signature]</i> District 1 Engineer of Local Roads & Streets
RELEASING FOR BID BASED ON LIMITED REVIEW	DECEMBER 11, 2009 <i>[Signature]</i> Deputy Director of Highways, Region 1 Engineer

PRINTED BY THE AUTHORITY OF THE STATE OF ILLINOIS