

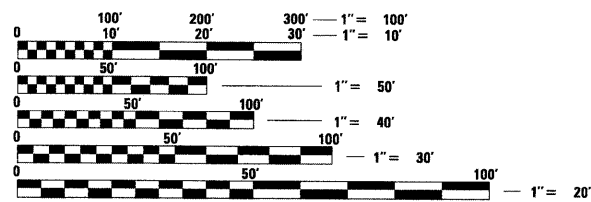
F.A.U. RTE.	SECTION	COUNTY	TOTAL SHEETS	SHEET NO.
1376	08-00086-00-SW	DU PAGE	41	1
		ILLINOIS	CONTRACT NO. 63187	

STATE OF ILLINOIS
DEPARTMENT OF TRANSPORTATION
DIVISION OF HIGHWAYS
**PLANS FOR PROPOSED
FEDERAL AID HIGHWAY**

**CMAQ SIDEWALK PROJECT
GRAND AVENUE (CHURCH ROAD TO YORK ROAD) (FAU 1376)
SECTION No. 08-00086-00-SW
PROJECT NO.: CMM-9003(053)
VILLAGE OF BENSENVILLE
DUPAGE COUNTY
JOB NO. : C-91-492-08**

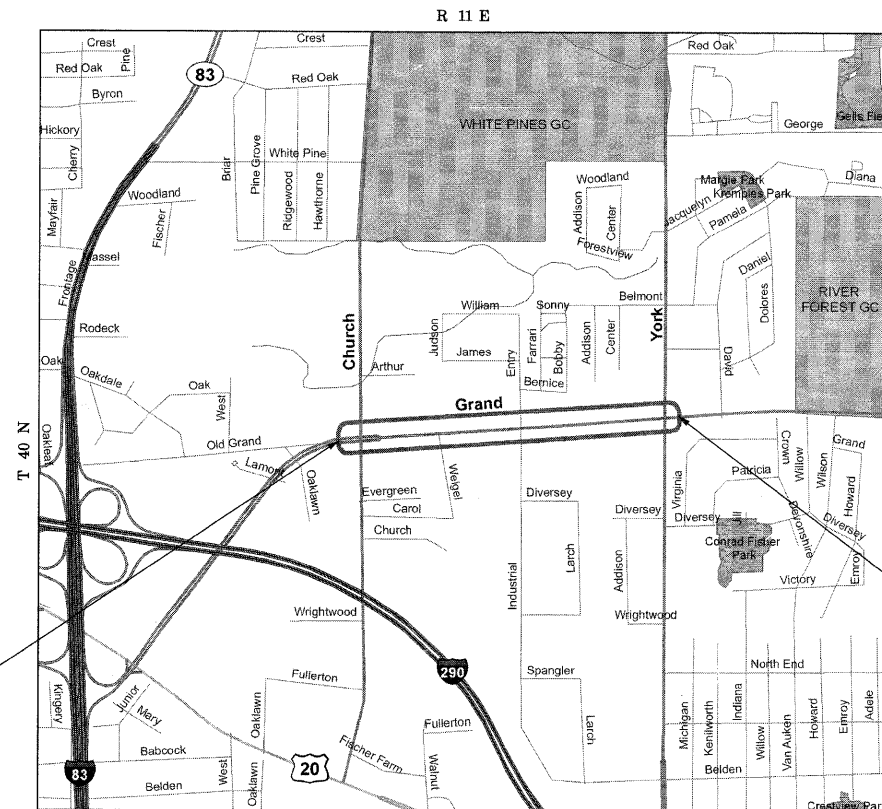
INDEX OF SHEETS

DESCRIPTION	SHEET NO.
TITLE SHEET	1
GENERAL NOTES & IDOT STANDARDS	2
SUMMARY OF QUANTITIES	3
TYPICAL SECTIONS	4
ALIGNMENT, TIES AND BENCHMARKS	5
EARTHWORK SCHEDULE	6
EXISTING CONDITIONS AND REMOVAL PLAN	7-10
SIDEWALK PLAN AND PROFILE	11-17
TRAFFIC SIGNAL MODIFICATION PLAN AT GRAND AVE AND INDUSTRIAL/ENTRY DRIVE	18
SCHEDULE OF QUANTITIES, CABLE PLAN, PHASE DESIGNATION DIAGRAM AND EMERGENCY VEHICLE PREEMPTION SEQUENCE AT GRAND AVE AND INDUSTRIAL/ENTRY DRIVE	19
DISTRICT ONE STANDARD TAFFIC SIGNAL DESIGN DETAILS	20-25
CONSTRUCTION DETAILS	26
CURB OR CURB AND GUTTER REMOVAL AND REPLACEMENT	27
DISTRICT ONE TYPICAL PAVEMENT MARKINGS	28
TRAFFIC CONTROL AND PROTECTION FOR SIDE ROADS, INTERSECTIONS, AND DRIVEWAYS	29
CROSS SECTIONS	30-41



FULL SIZE PLANS HAVE BEEN PREPARED USING STANDARD ENGINEERING SCALES. REDUCED SIZED PLANS WILL NOT CONFORM TO STANDARD SCALES. IN MAKING MEASUREMENTS ON REDUCED PLANS, THE ABOVE SCALES MAY BE USED.

J.U.L.I.E.
JOINT UTILITY LOCATION INFORMATION FOR EXCAVATION
1-800-892-0123
OR 811



PROJECT BEGINS
STATION 10+00

TRAFFIC DATA
ADT (YEAR) = 27,800 (2009)
SPEED LIMIT = 35 MPH
DESIGN SPEED = 35 MPH
CLASSIFICATION = COLLECTOR

PROJECT ENDS
STATION 43+35

LOCATION MAP
N.T.S.
3rd P.M.

GROSS LENGTH OF PROJECT = 3335 FEET (0.63 MI)
NET LENGTH OF PROJECT = 3335 FEET (0.63 MI)

STATE OF ILLINOIS
DEPARTMENT OF TRANSPORTATION
DIVISION OF HIGHWAYS

APPROVED December 8, 2009
F. O. Sato
VILLAGE OF BENSENVILLE, MAYOR

PASSED DECEMBER 9, 2009
CHRISTOPHER HOLT
DISTRICT 1 ENGINEER OF LOCAL ROADS AND STREETS

RELEASING FOR BID
BASED ON LIMITED
REVIEW DECEMBER 14, 2009
Diane M. O'Keefe
DEPUTY DIRECTOR OF HIGHWAYS, REGION 1 ENGINEER

LEE M. FELL P.E.
ENGINEER
DATE: 12/9/09

ILLINOIS REGISTRATION No. 062-053708
EXPIRATION DATE: 11/2011

CHRISTOPHER B. BURKE ENGINEERING, LTD.
9575 W. Higgins Road, Suite 600
Rosemont, Illinois 60018
(847) 823-0500
PROFESSIONAL DESIGN FIRM No. 184-001175
EXPIRATION DATE: 04/30/2011