

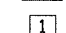

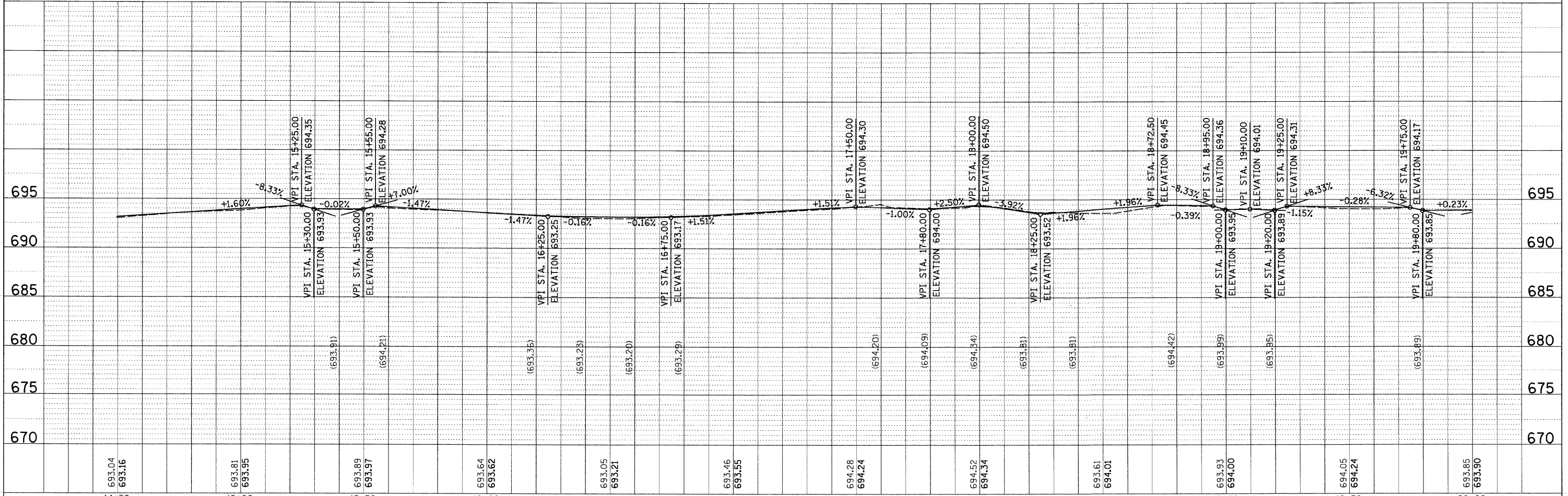
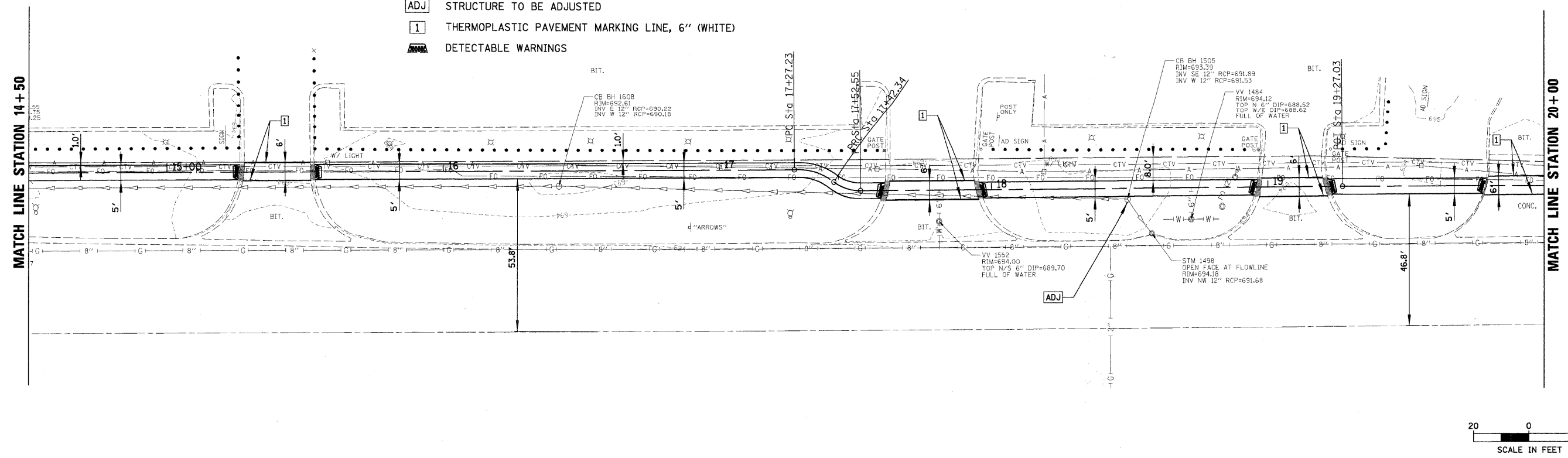


PLAN
 SURVEYED _____
 NOTE BOOK _____
 NO. _____

PROFILE
 SURVEYED _____
 NOTE BOOK _____
 NO. _____

LEGEND

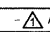
-  COMBINATION CONCRETE CURB AND GUTTER REMOVAL AND REPLACEMENT
-  STRUCTURE TO BE ADJUSTED
-  THERMOPLASTIC PAVEMENT MARKING LINE, 6" (WHITE)
-  DETECTABLE WARNINGS



FILE NAME =
 N:\BENSENVILLE\080086\00\SW\1\RP2.dgn

USER NAME = MAGOLDEN
 PLOT SCALE = 20'
 PLOT DATE = 12/14/2009

DESIGNED -
 DRAWN -
 CHECKED -
 DATE -

REVISED -  ADDENDUM 1 - 8/27/09
 REVISED -
 REVISED -
 REVISED -

**STATE OF ILLINOIS
 DEPARTMENT OF TRANSPORTATION**

SIDEWALK PLAN AND PROFILE

SCALE: 20' SHEET NO. OF SHEETS STA. TO STA.

F.A.U. RTE.	SECTION	COUNTY	TOTAL SHEETS	SHEET NO.
1376	08-00086-00-SW	DUPAGE	41	12
CONTRACT NO. 63187				
ILLINOIS FED. AID PROJECT CMM-9003 (053)				