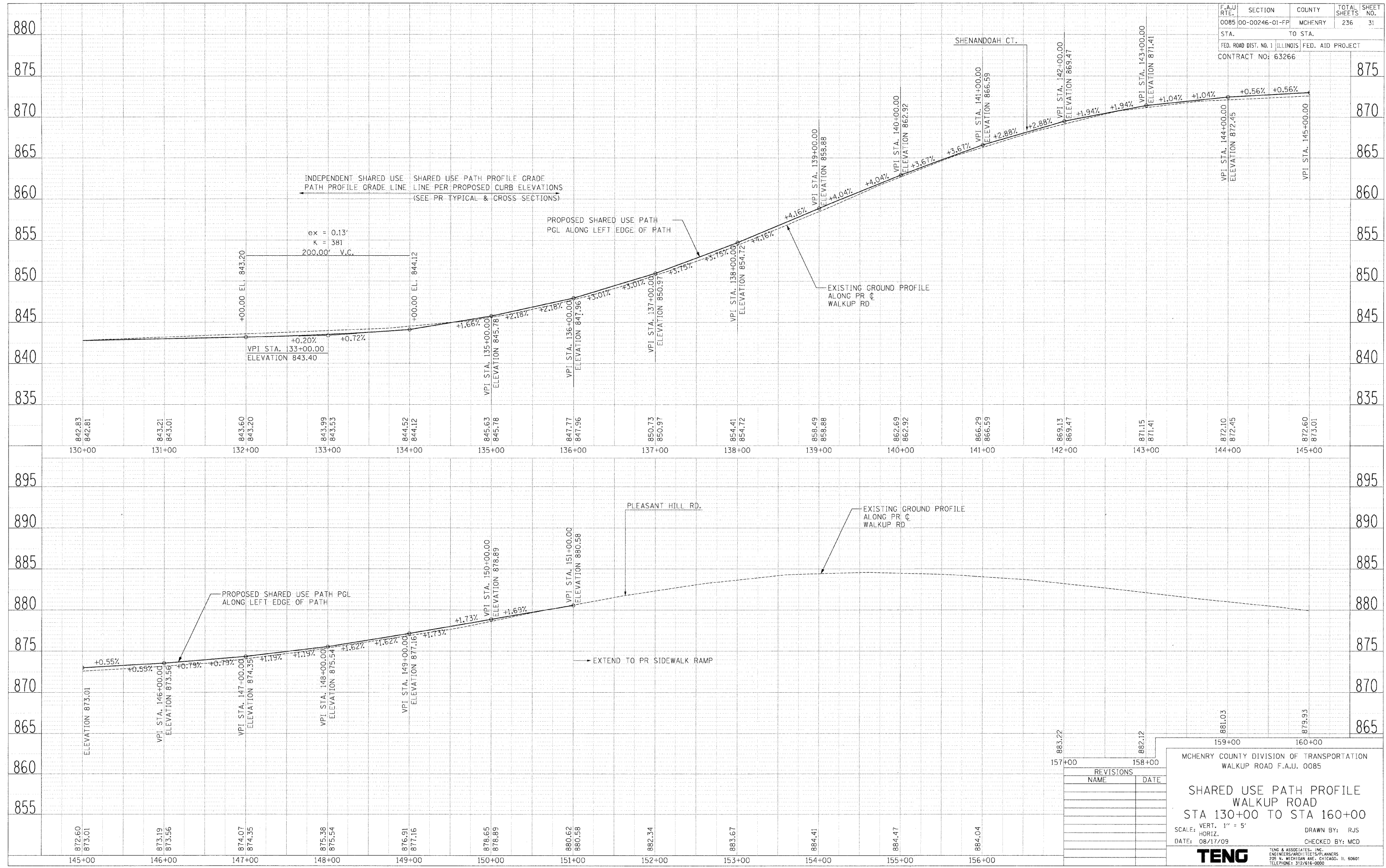


F.A.U. RITE:	SECTION	COUNTY	TOTAL SHEETS	SHEET NO.
0085	00-00246-01-FP	MCHENRY	236	31
STA.		TO STA.		
FED. ROAD DIST. No. 1		ILLINOIS		
CONTRACT NO: 63266		FED. AID PROJECT		



PLAN	SURVEYED	DATE
NOTE BOOK	PLOTTED	
NO.	CHECKED	
	BY	
	DATE	

PROFILE	SURVEYED	DATE
NOTE BOOK	PLOTTED	
NO.	CHECKED	
	BY	
	DATE	

STANKR...
 8-4-2009, 14:45:56
 1 2 3 4 5 6 7 8 9 201 223 24 25 26 27 28 29 30 31 32 33 34 35 36 37 38 39 40 41 42 43 44 45 46 47 48 49 50 51 52 53 54 55 56 57 58 59 60 61 62 63

REVISIONS	
NAME	DATE

MCHENRY COUNTY DIVISION OF TRANSPORTATION
 WALKUP ROAD F.A.U. 0085

SHARED USE PATH PROFILE
 WALKUP ROAD
 STA 130+00 TO STA 160+00

SCALE: VERT. 1" = 5'
 HORIZ. 1" = 40'

DATE: 08/17/09
 DRAWN BY: RJS
 CHECKED BY: MCD

TENG
 TENG & ASSOCIATES, INC.
 ENGINEERS/ARCHITECTS/PLANNERS
 205 N. MICHIGAN AVE. CHICAGO, IL 60601
 TELEPHONE: 312/616-0000