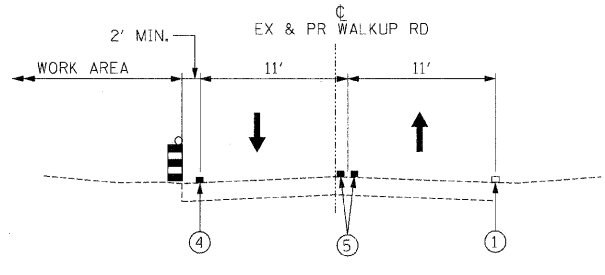
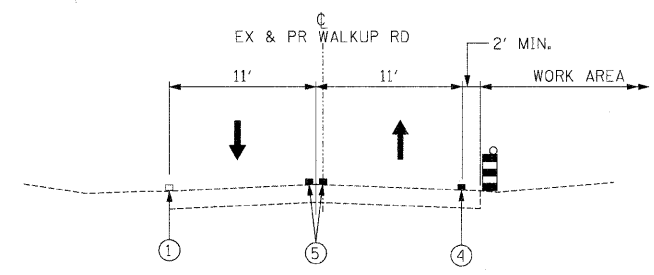


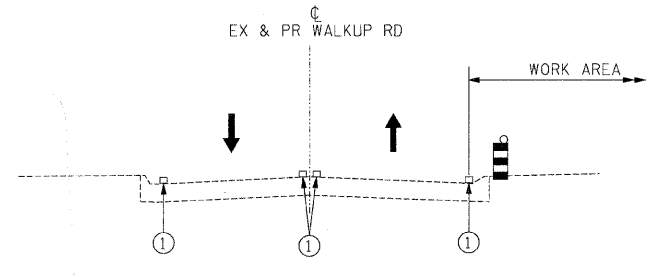
MOT TYPICAL SECTION
 STAGE 1
 STA 66+00 TO STA 77+54



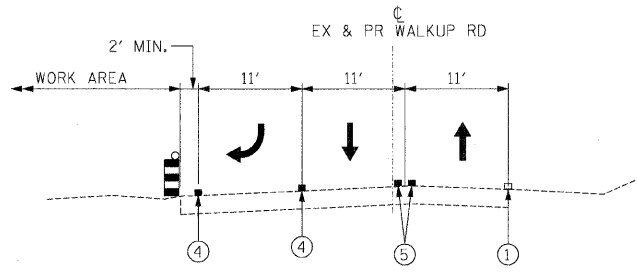
MOT TYPICAL SECTION
 STAGE 1
 STA 134+72.33 TO STA 151+20.88
 STA 154+60.12 TO STA 170+00.00



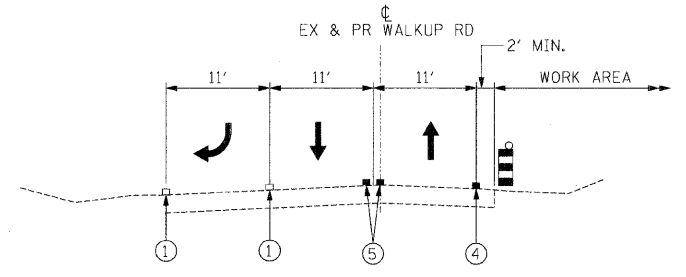
MOT TYPICAL SECTION
 STAGE 1
 STA 174+50.00 TO STA 190+76.24
 STA 193+52.00 TO STA 202+00.00



MOT TYPICAL SECTION
 STAGE 1
 STA 77+54 TO STA 134+72.33



MOT TYPICAL SECTION
 STAGE 1
 STA 151+20.88 TO STA 154+60.12



MOT TYPICAL SECTION
 STAGE 1
 STA 190+76.24 TO STA 193+52.00

LEGEND:

- VERTICAL PANEL W/BI-DIRECTIONAL STEADY BURNING LIGHT
- DRUM W/BI-DIRECTIONAL STEADY BURNING LIGHT
- DIRECTION OF TRAFFIC
- ① EXISTING PAVEMENT MARKING
- ② TEMPORARY PAVEMENT
- ③ TEMPORARY AGGREGATE SHOULDER
- ④ TEMPORARY PAVEMENT MARKING - 4" (WHITE)
- ⑤ TEMPORARY PAVEMENT MARKING - 4" (YELLOW)
- ⑥ PROPOSED PAVEMENT MARKING

REVISIONS	
NAME	DATE

MCHENRY COUNTY DIVISION OF TRANSPORTATION
 WALKUP ROAD F.A.U. 0085

**MAINTENANCE OF TRAFFIC
 TYPICAL SECTIONS
 STAGE 1**

SCALE: N.T.S. DRAWN BY: BRH
 DATE: 08/17/09 CHECKED BY: KA

TENG
TENG & ASSOCIATES, INC.
 ENGINEERS/ARCHITECTS/PLANNERS
 205 N. MICHIGAN AVE., CHICAGO, IL 60601
 TELEPHONE: 312/616-0000

\\MOT0085.DGN...TTEODY.V.DGN
 8-14-2009 4:50:10
 T:\DOCUMENT\1930003\CIVIL\ADGN\MOT0085.DGN
 1 2 3 4 5 6 7 8 9 10 11 12 13 14 15 16 17 18 19 20 21 22 23 24 25 26 27 28 29 30 31 32 33 34 35 36 37 38 39 40 41 42 43 44 45 46 47 48 49 50 51 52 53 54 55 56 57 58 59 60 61 62 63